



World
University
Rankings 2024

THE 2024 World University Rankings Data Masterclass – India

Duncan Ross
Chief data officer



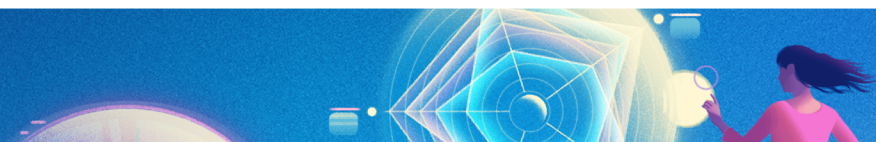
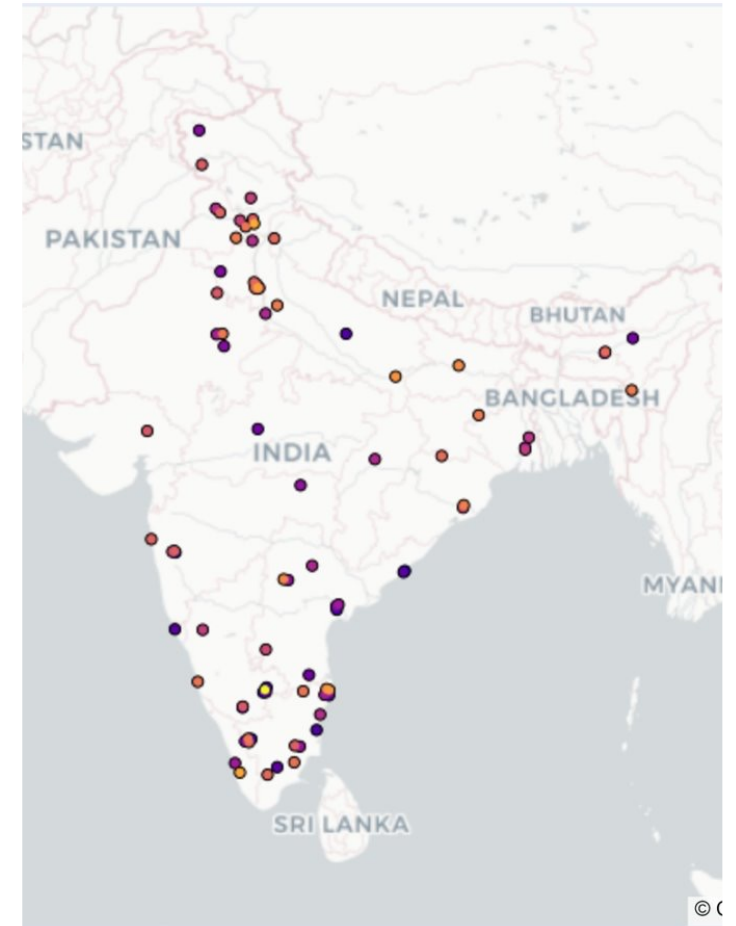
World University Rankings 2024 Data Masterclass Agenda

Methodology Review

India Trends and Analyses

How to participate

Q&A



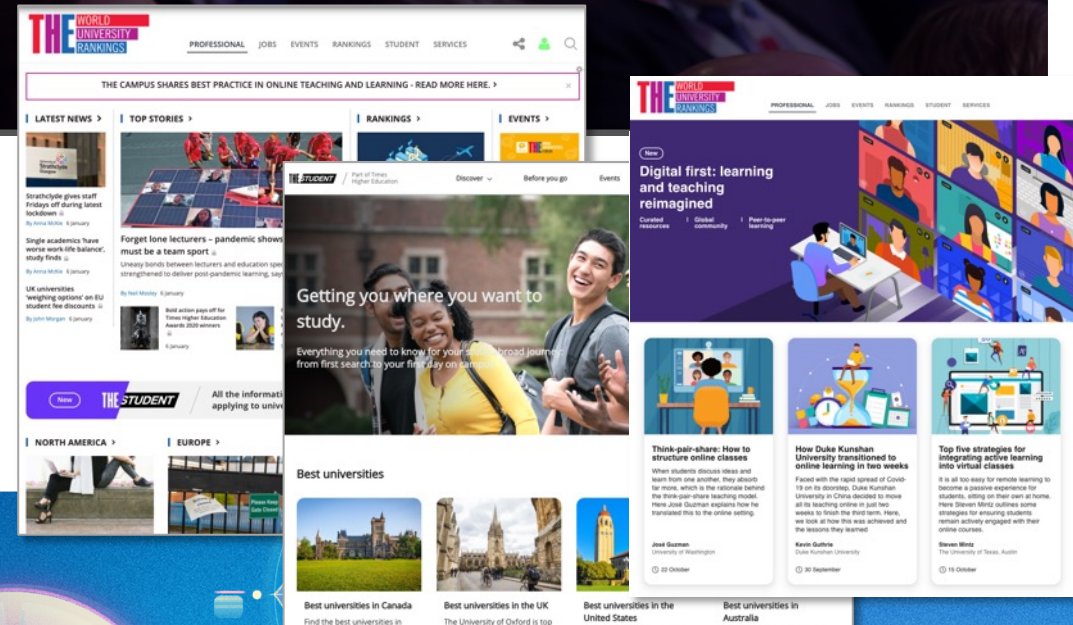
50+ Years of Insights

To help **universities** understand their position against their mission.
To help **students** find and access the university best suited to their abilities and aspirations.
To help **higher education** deliver transformational teaching, research and innovation.

1971

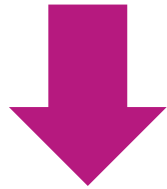


2023



Our Rankings

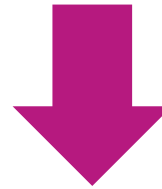
TEACHING



Focus: student satisfaction, employer reputation, graduation rate + more

Participation rules: country specific

RESEARCH



Focus: research output, research quality, research collaboration, reputation + more

Participation rules: 1,000+ publications over 5 years, teach undergraduates across a range of subjects

IMPACT & SUSTAINABILITY

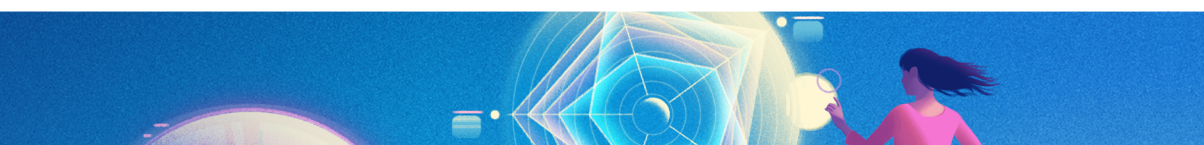
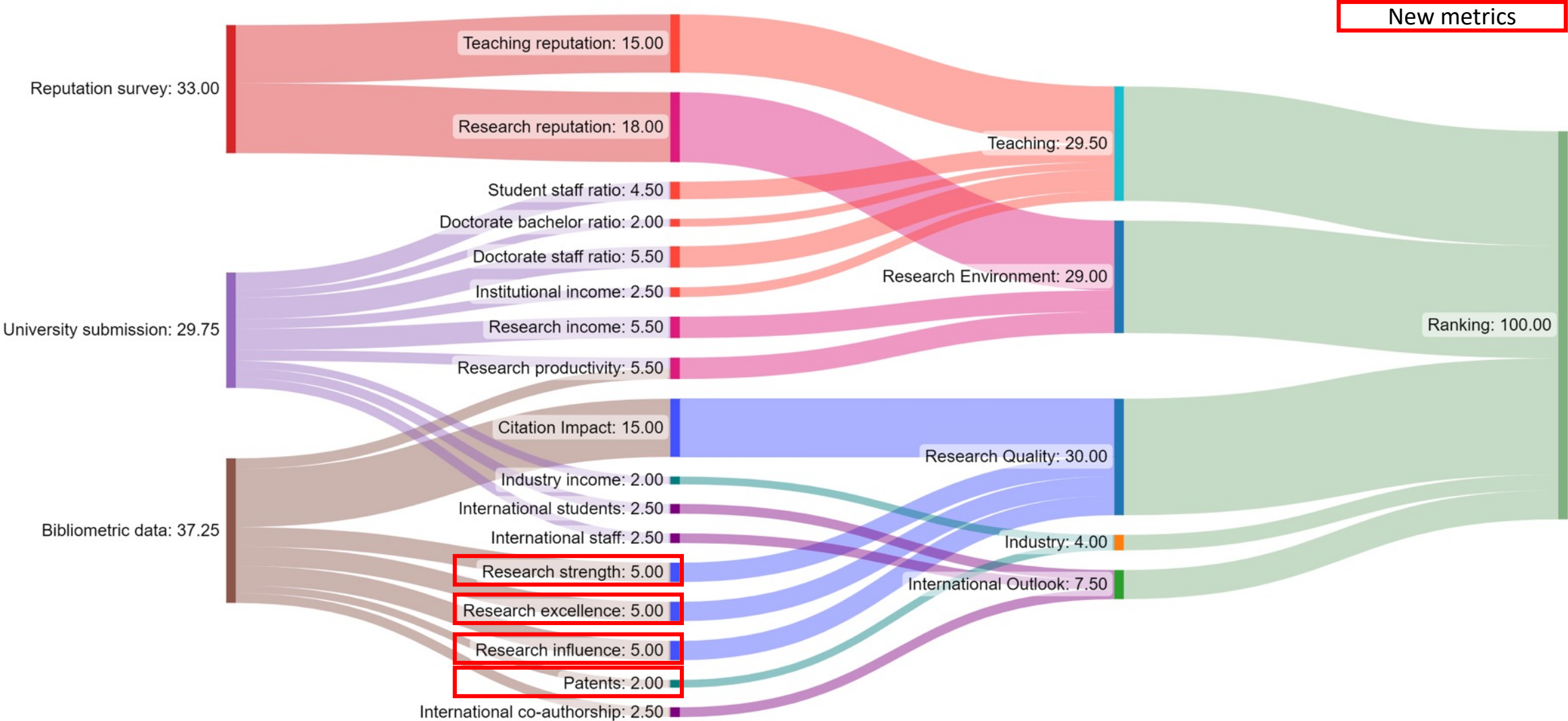


Focus: research, teaching, stewardship and outreach against the UN's 17 Sustainable Development Goals

Participation rules: all UG or PG higher education institutions



Methodology



The world's biggest university ranking

Universities

The world's biggest university ranking

Universities submitted data

2,673

Number of countries represented

127

Bibliometrics

In partnership with **ELSEVIER**

Research papers

16.5m

Citations

134m

Universities Data

The world's largest data gathering exercise from universities

Data values

411,789

Data queries resolved

34,455

Academic Survey

The world's largest academic survey

Respondents

68,402

Votes

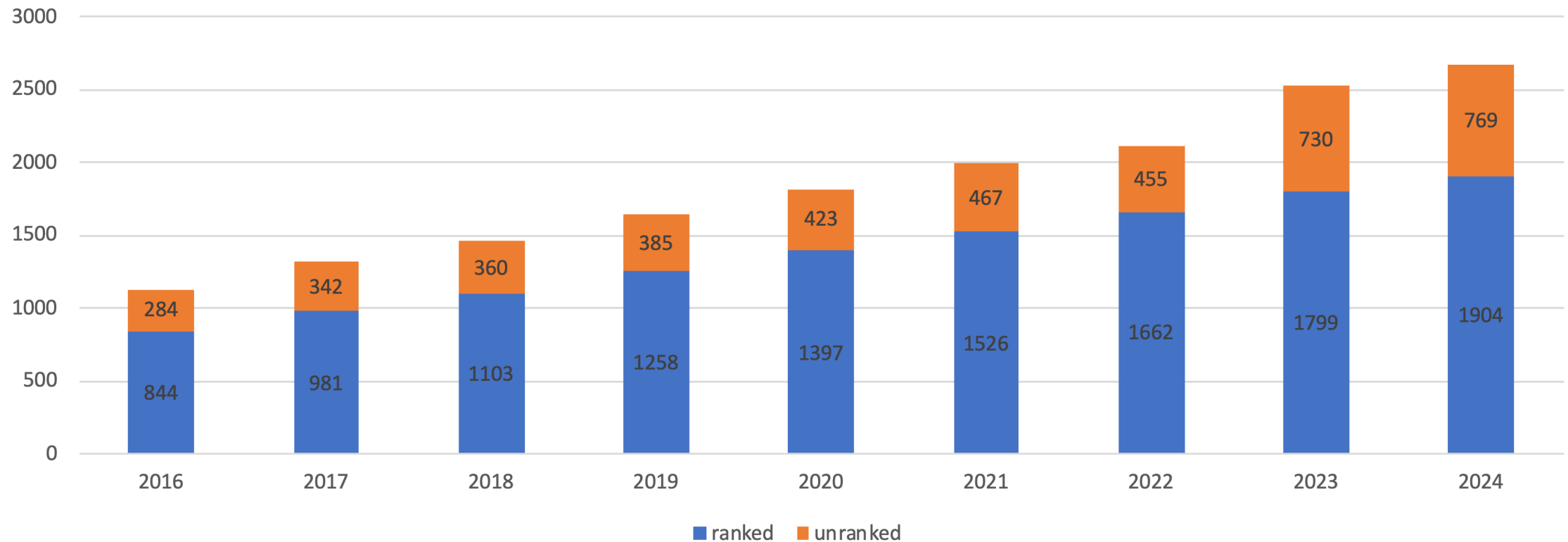
944,509

Countries

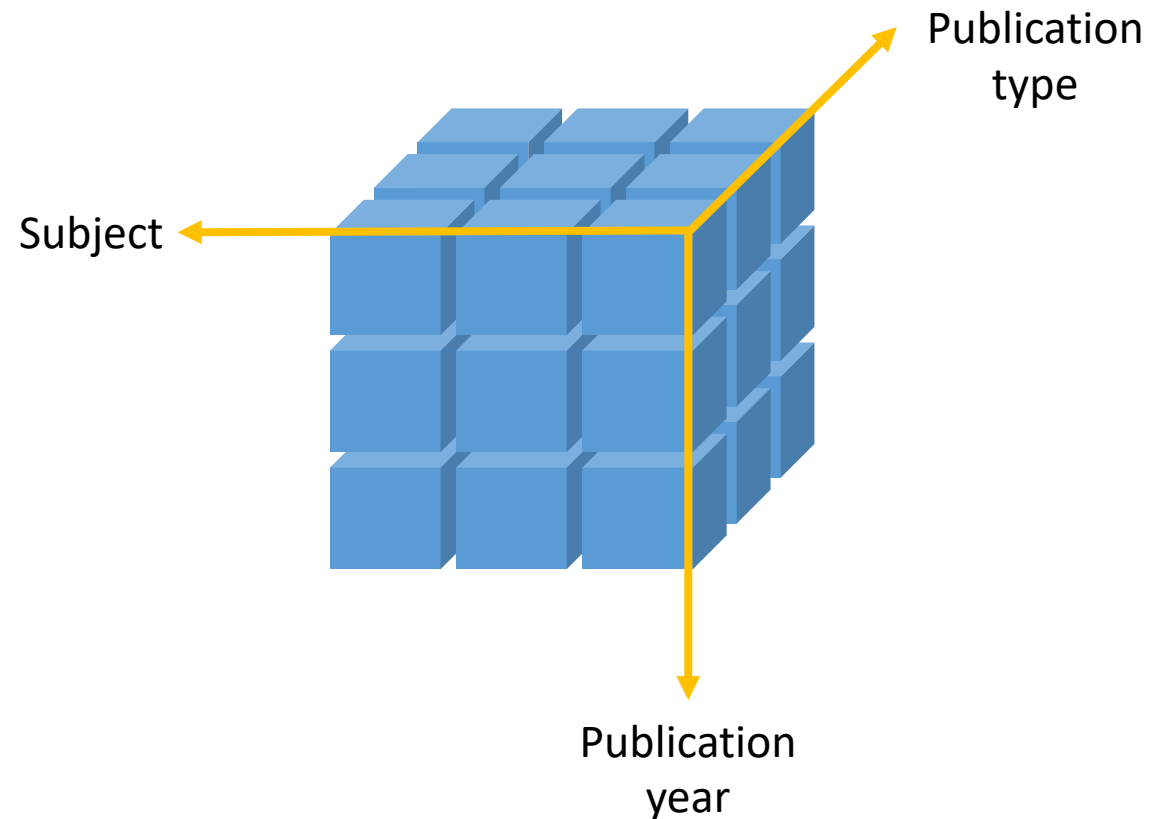
166

20th Anniversary of THE World University Rankings

Number of universities which submitted data to THE World University Rankings



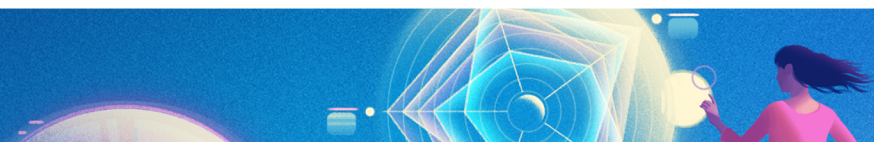
What is Field Weighted Citation Impact?



Let's say I published a journal article in 2019 on artificial intelligence, and it received 6 citations so far...

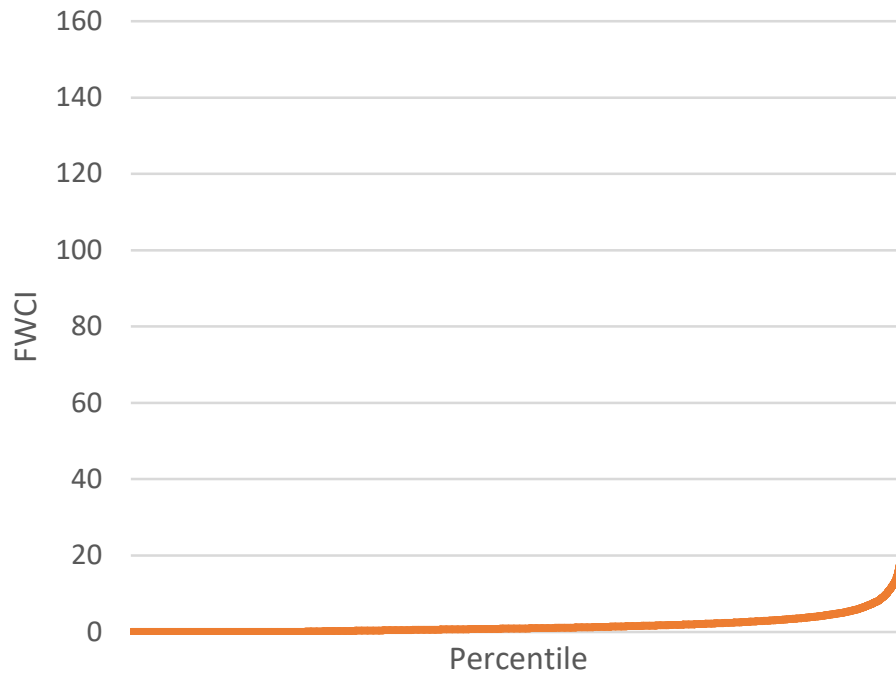
...and the average number of citations received by publications of the same type, same year and same subject is 2...

...then the FWCI of this publication is $6/2 = 3$

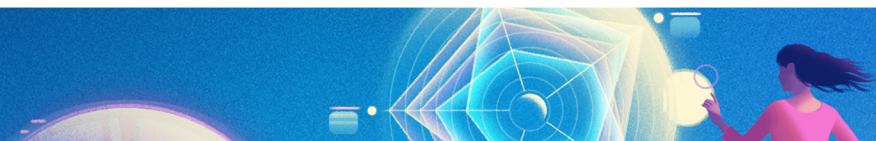
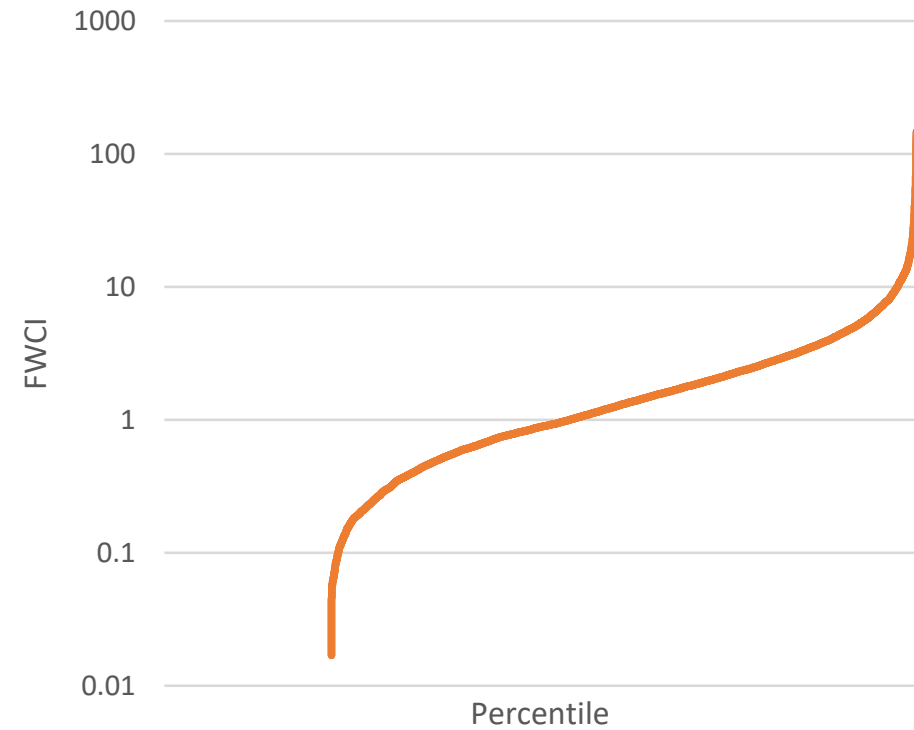


What about FWCI of an author or an institution?

FWCI of a tech oriented university in East Asia

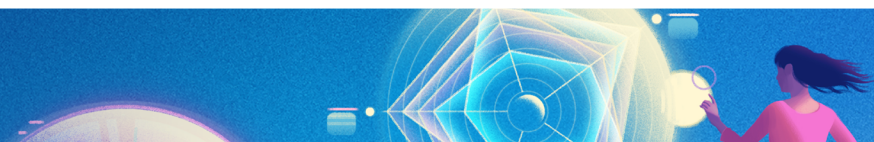
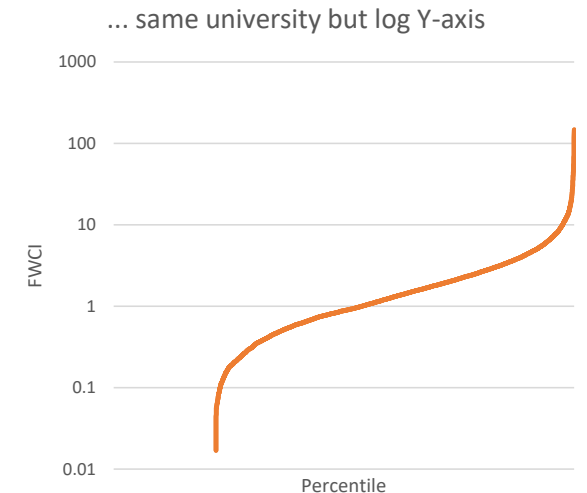


... same university but log Y-axis



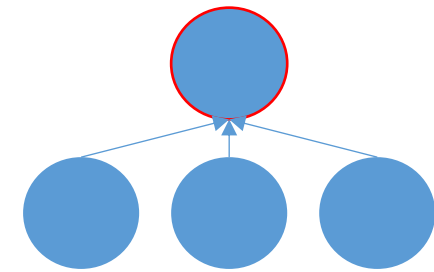
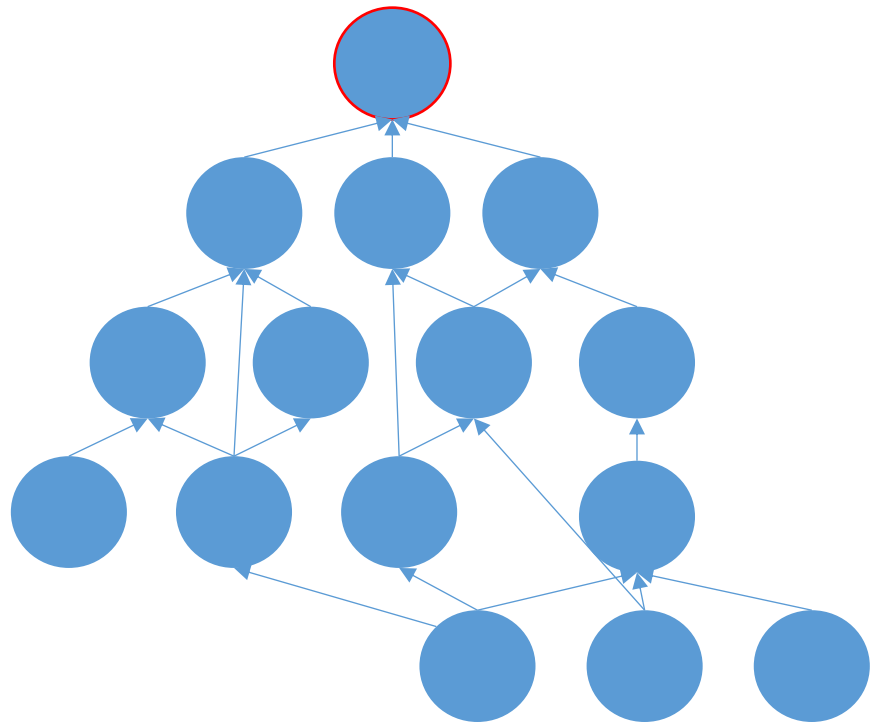
THE World University Rankings Research Quality Metrics

- Citation Impact – Mean FWCI of an institution’s output, but with tweaks
 - Kilo-author papers
 - Country normalisation
- Research Strength – 75th percentile FWCI of an institution’s output
- Research Excellence – Number of papers in top 10 percent by FWCI
- Research Influence – Different from others research quality metrics
 - Not all citations are created equal
 - Citations from important papers counts more
 - How to define “important papers”?



Research Influence - Papers

Both papers have 3 citations. Which one is likely to be more “influential”?



Citing Paper → Cited Paper



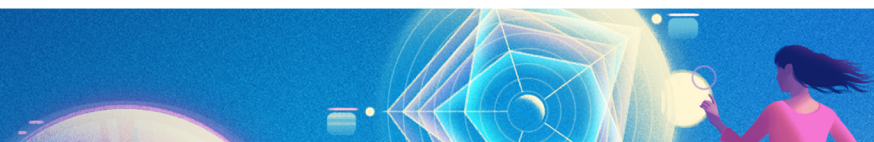
Research Influence – What is it?

Research Influence looks at the network of citations around papers to understand what impact they are having around the world.

In essence, it works like a popularity contest for papers. It's not just about the quantity of citations but also the quality, with citations from reputable papers carrying more weight.

Each paper gets an influence score based on how many other papers cite it and how influential those citing papers are. If a lot of influential papers cite a paper, it gets a higher influence score.

The calculation for Research Influence is based on Google's "[Page Rank](#)" algorithm.



Research Influence – How it works

Papers start with the same influence

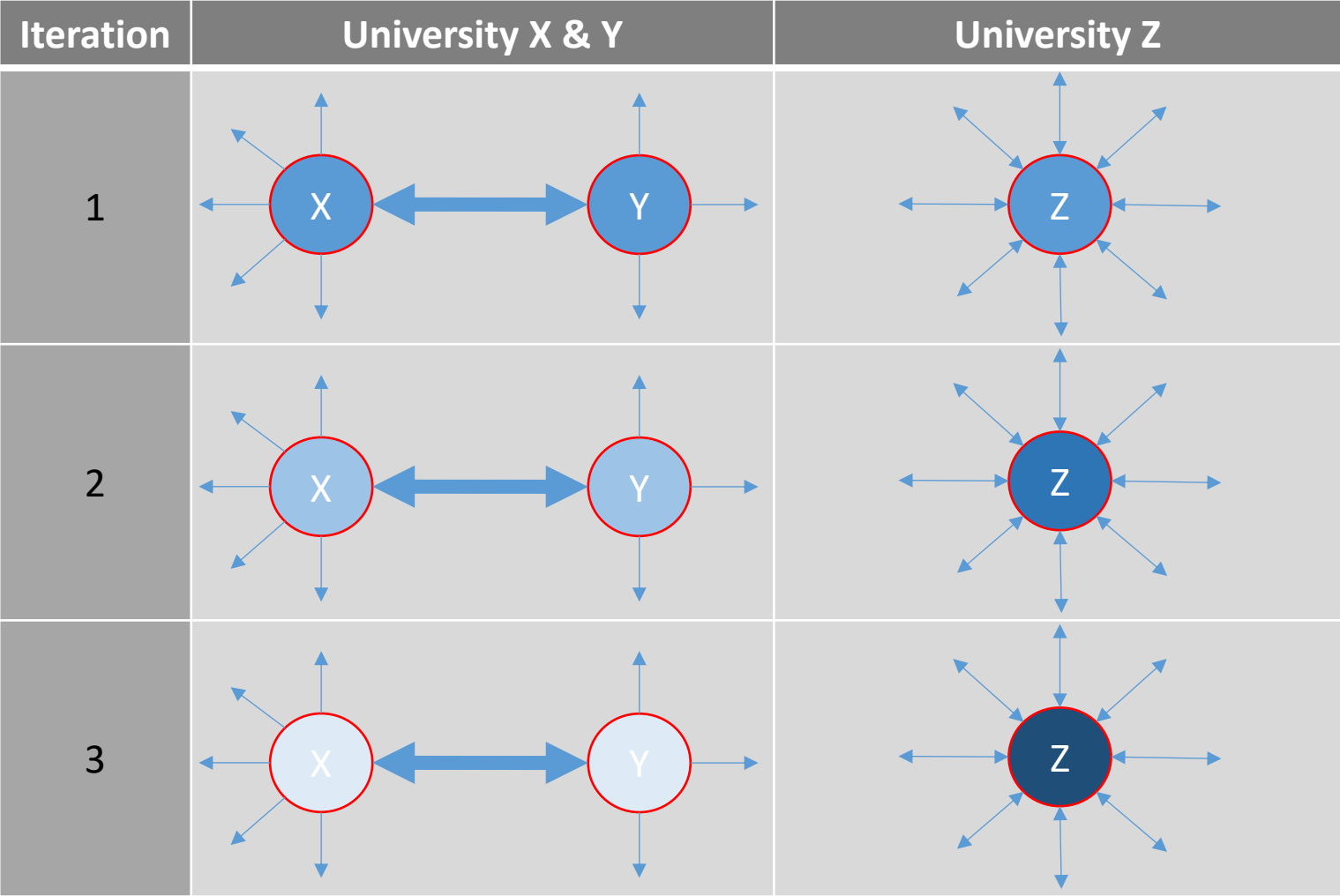
We can then think of some of a papers influence being shared amongst the papers it cites

This process is repeated multiple times through a number of iterations (page rank is an iterative algorithm)

The effect is that papers that are well connected receive more influence scores than from papers that aren't

This is then rolled up to the university level to calculate university influence

The diagram shows the effect at university level which is an aggregation of the papers produced by the university; this is done to aid understanding. The algorithm works at the paper level.

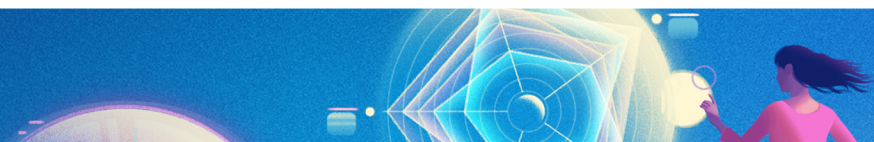


Deeper Blue indicates more Research Influence



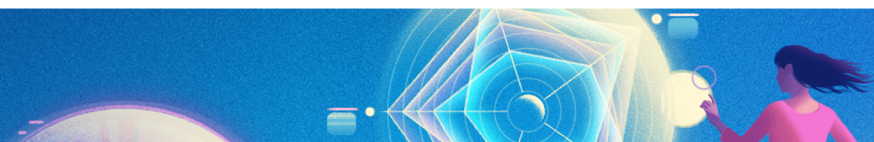
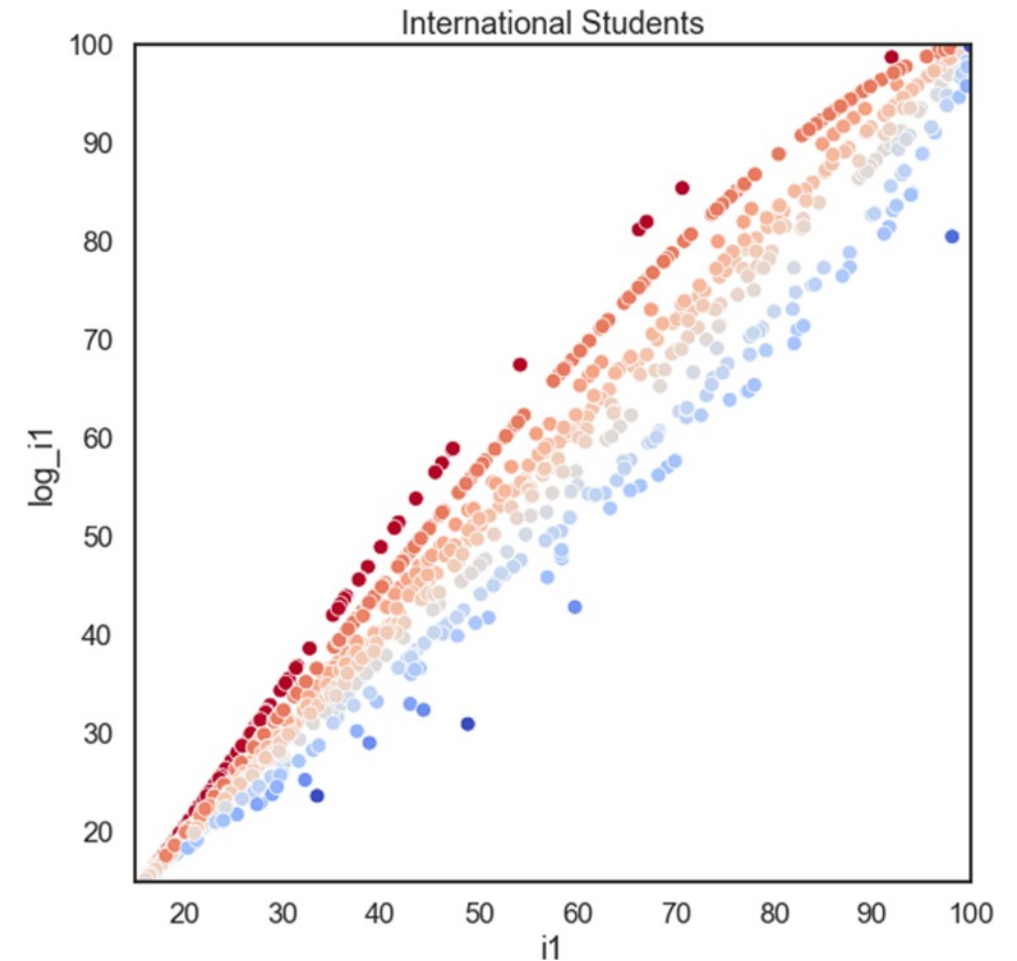
Industry: Patents

- The extent to which universities are supporting their national economies through technology transfer is an area that deserves greater recognition. We will be introducing an additional measure.
- Directly measures research output, specifically how much an institution's research is cited by patents. This is similar to one that we already use within the THE Impact Rankings (in SDG 9: Industry, Innovation and Infrastructure).
- This measure is subject weighted to avoid penalising universities producing research in fields low in patents.
- This is a count of patents, normalised by staff numbers.



International Outlook

- Large countries had been disadvantaged compared to small countries in our international metrics, in that it is “easier” for staff and students in small countries to work/study abroad.
- The existing metrics is now normalised to account for the populations size:
 - Proportion of international students
 - Proportion of international staff
 - Proportion of publications with at least one co-author from an international institution
- New Studying abroad metric at zero weight

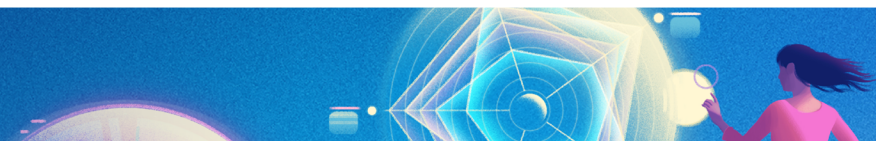
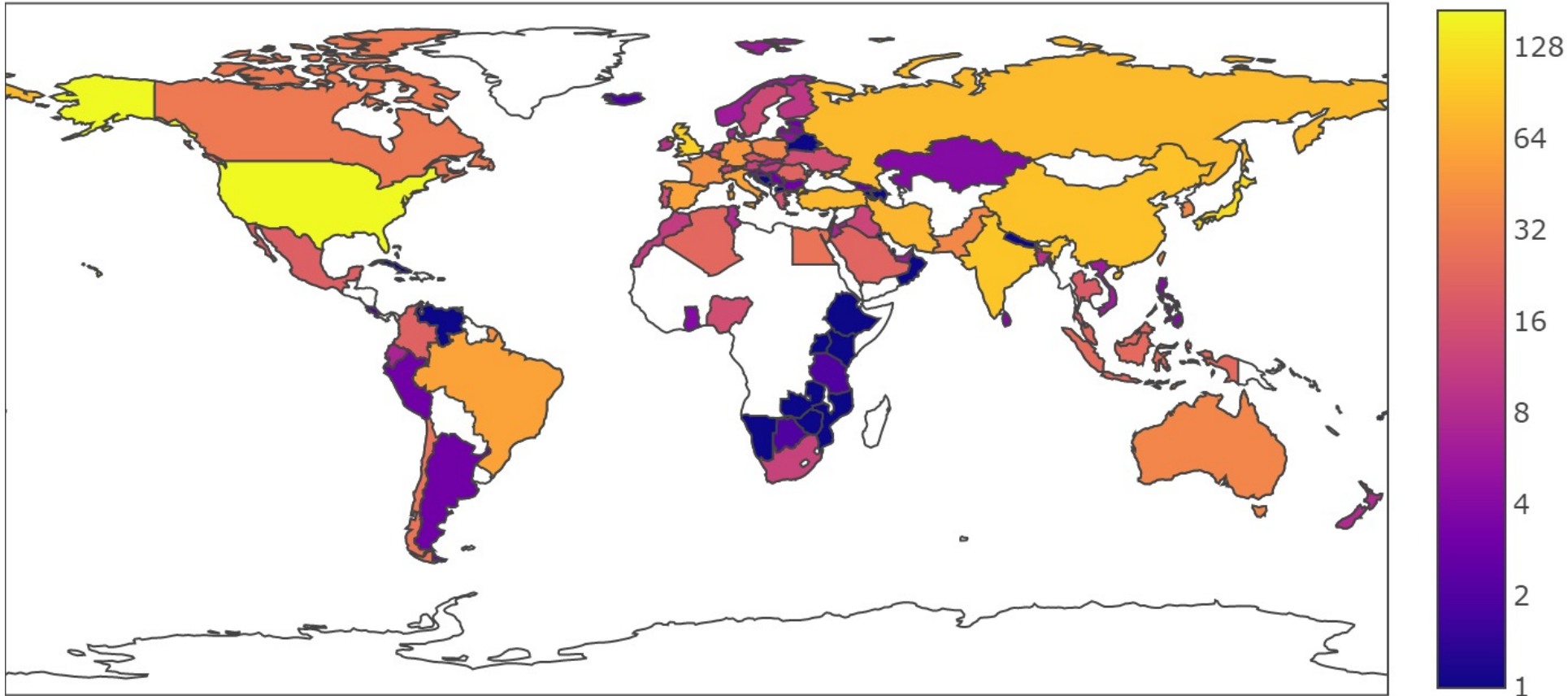


India Trends and Analyses

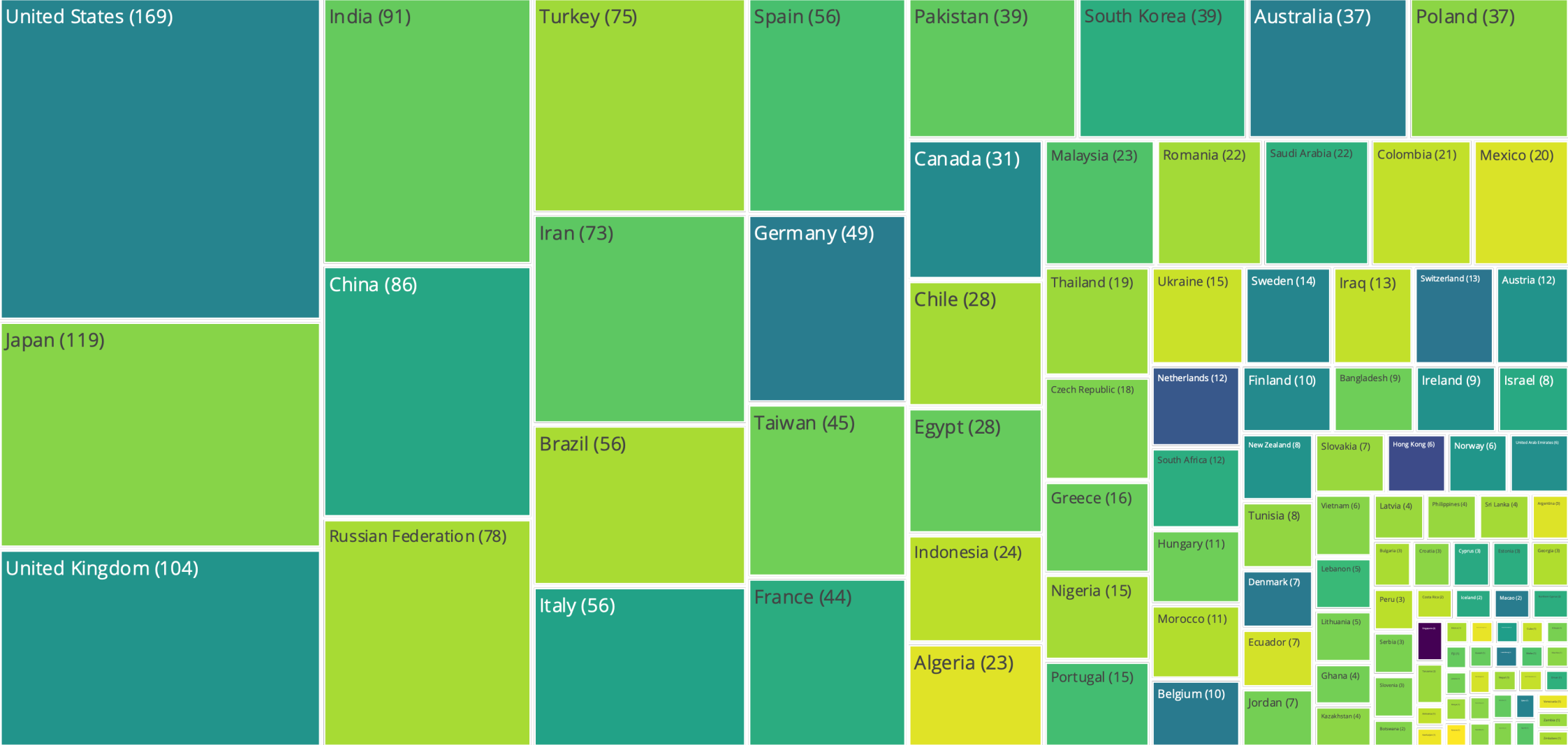


Universities per country/region in the World in WUR 2024

There are a total of 1904 institutions ranked in the World University Rankings 2024, from 108 countries, plus 769 Reporters
91 institutions from India were ranked, which is the 4th highest in the World . There were also 33 Indian Reporters

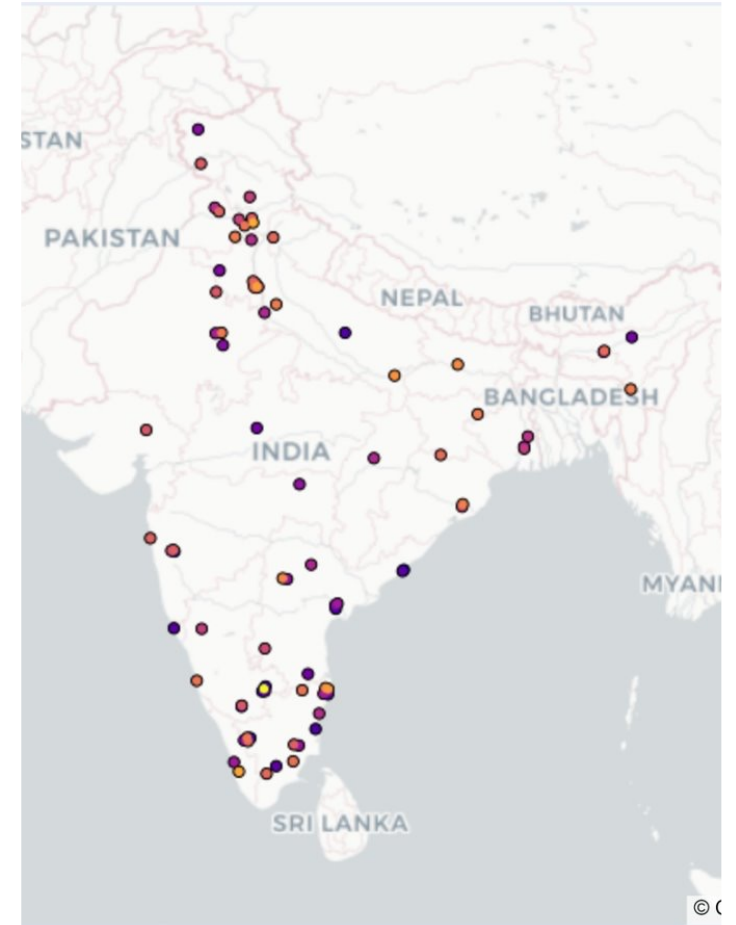


Ranked universities by country/region



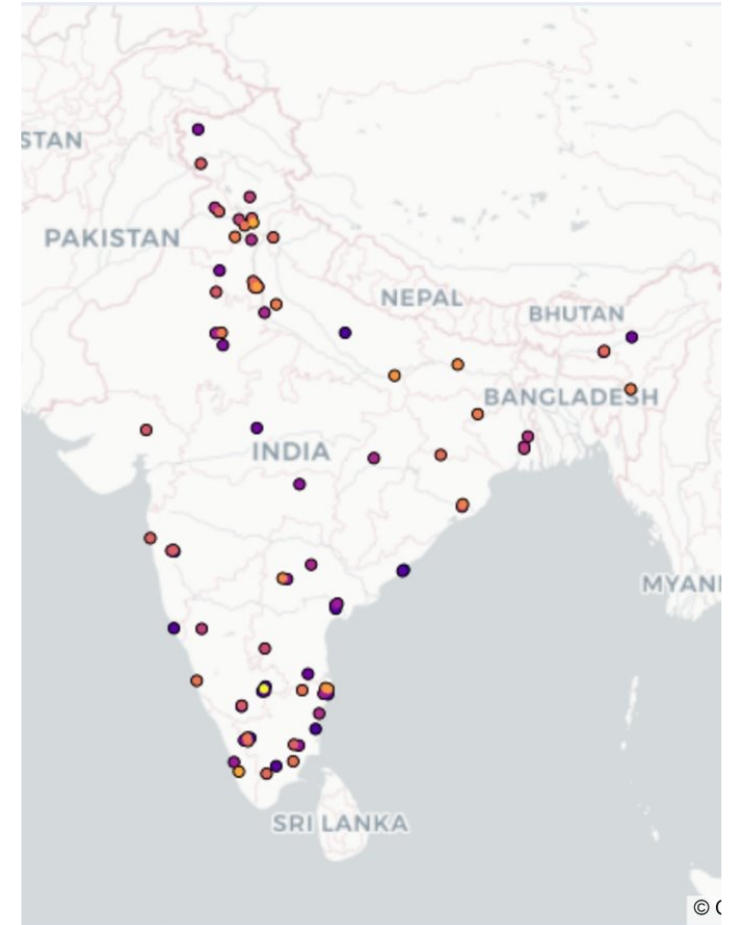
Global Top 10

Institution	Country	This year	Last year
University of Oxford	United Kingdom	1	1
Stanford University	United States	2	=3
Massachusetts Institute of Technology	United States	3	5
Harvard University	United States	4	2
University of Cambridge	United Kingdom	5	=3
Princeton University	United States	6	7
California Institute of Technology	United States	7	6
Imperial College London	United Kingdom	8	10
University of California, Berkeley	United States	9	8
Yale University	United States	10	9



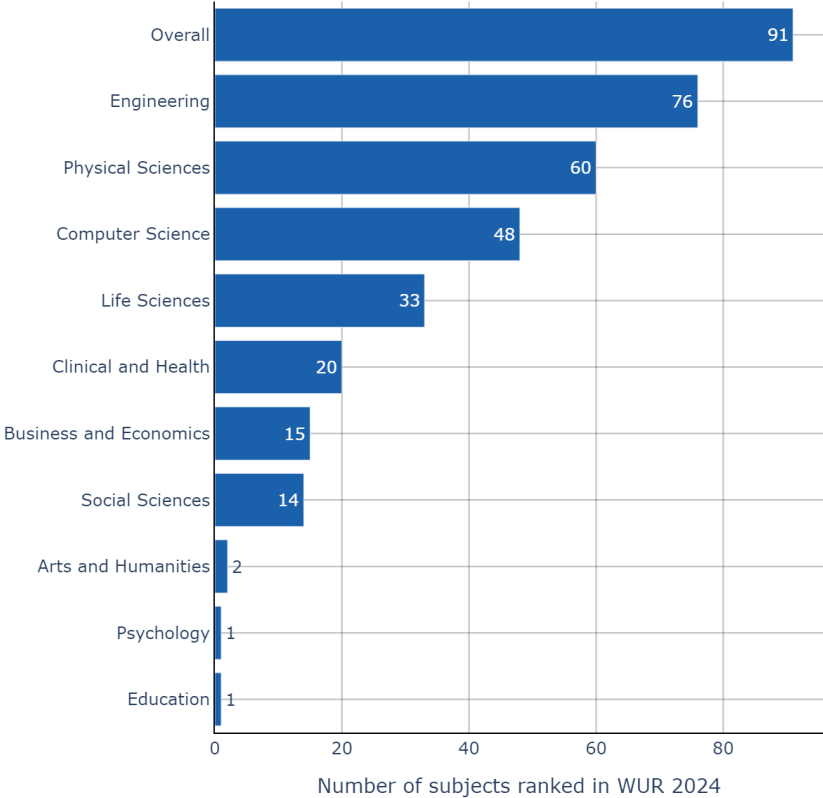
India Top 5

Institution	This year	Last year
Indian Institute of Science	201–250	251-300
Shoolini University	501–600	351-400
Mahatma Gandhi University	501–600	401-500
Jamia Millia Islamia	501–600	501-600
Anna University	501–600	801-1000

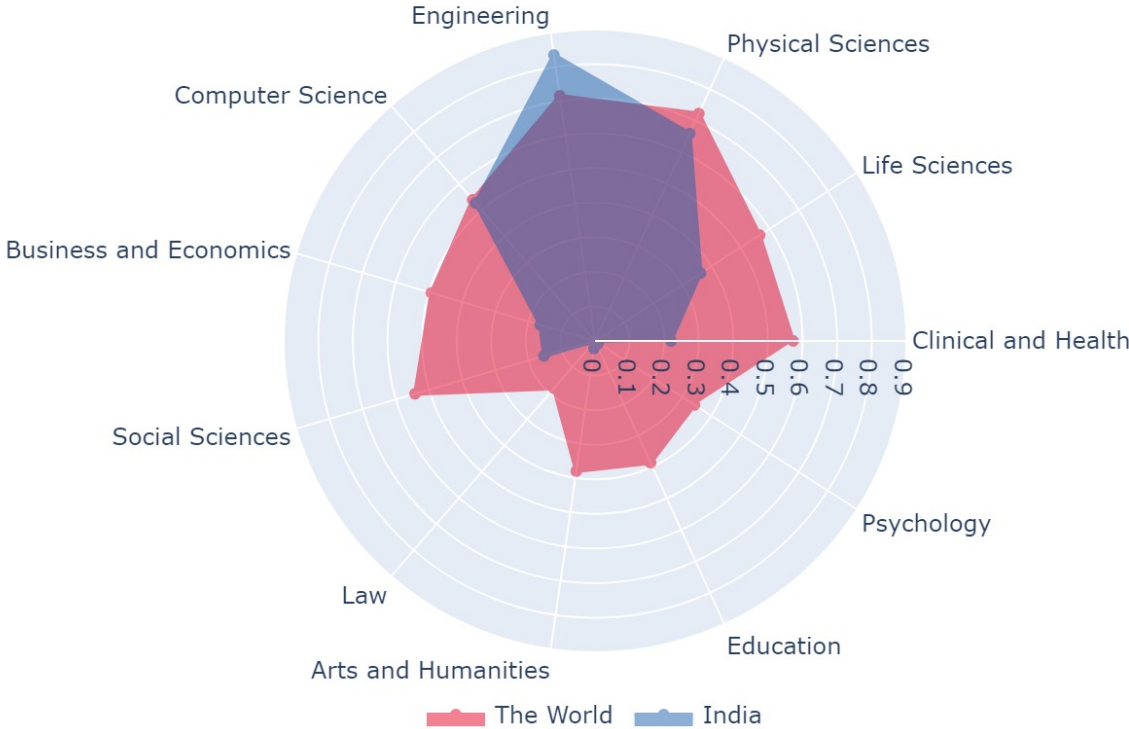


India vs The World WUR 2024 subjects analysis

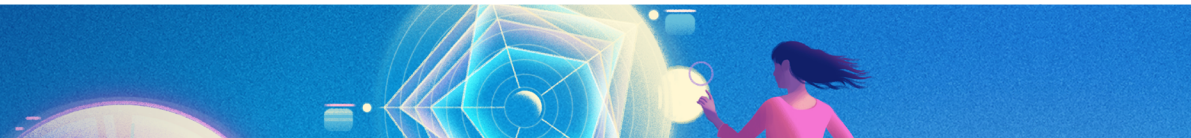
India subjects ranked in WUR 2024



Percentage of universities with subjects ranked in WUR 2024

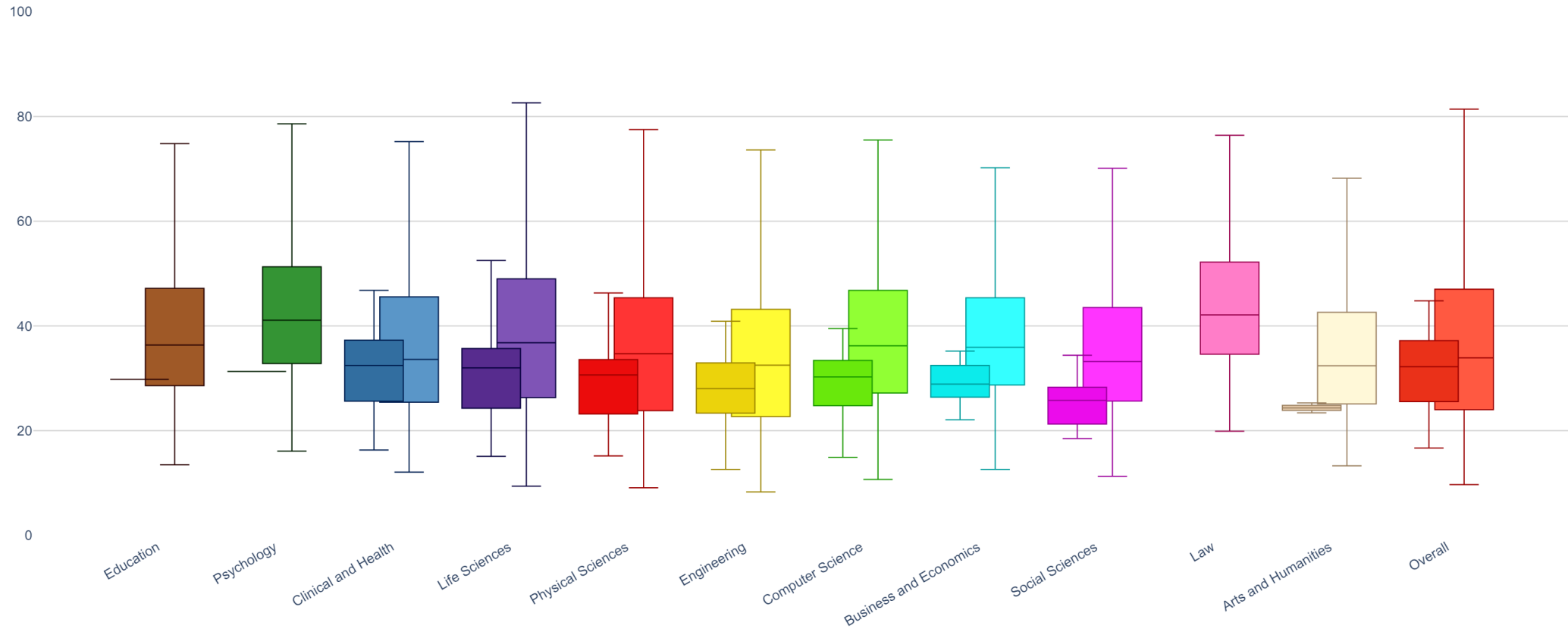


Across India, Engineering was the most frequently ranked subject in 2024 where it was ranked for 76 universities. Education was the least frequently ranked subject in 2024 with just 1 universities ranked.

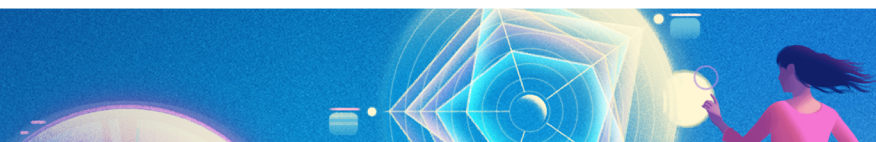


India vs The World WUR 2024 subjects comparison

India vs The World World University Rankings 2024 subjects boxplot

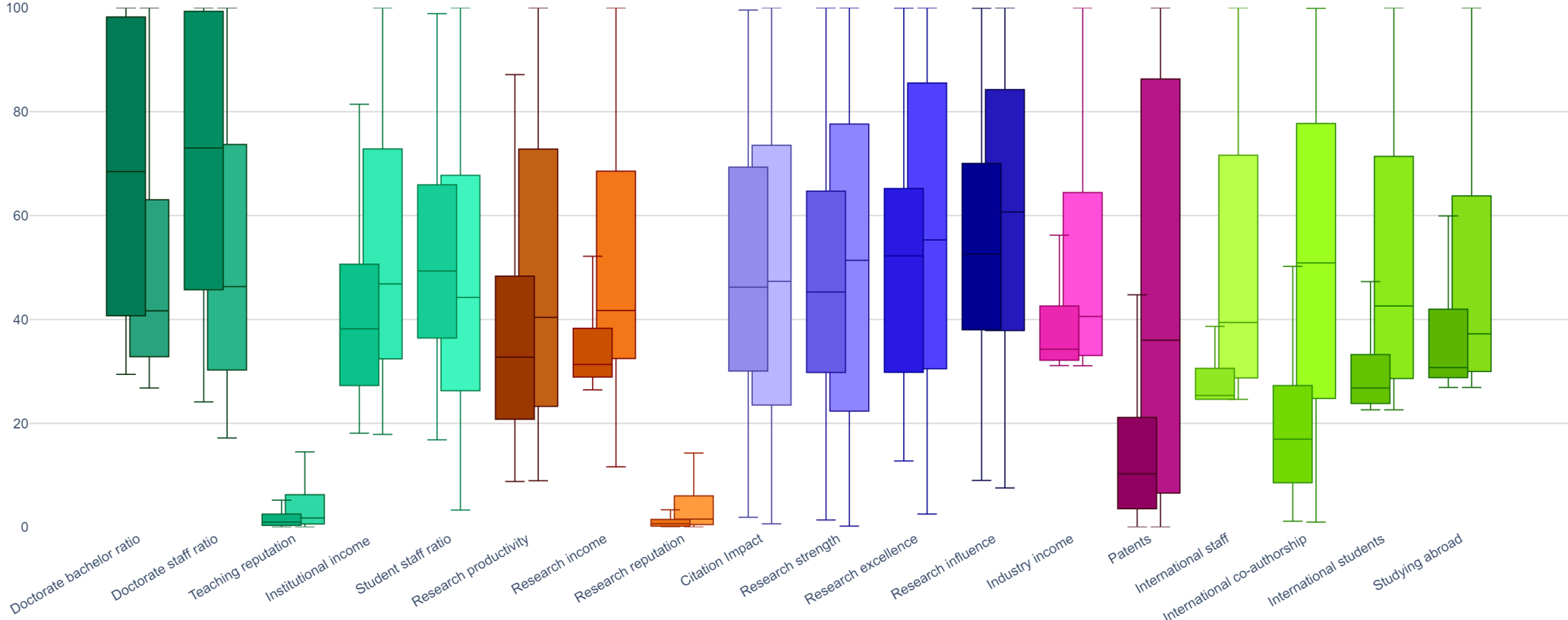


The boxes for India are on the left, the boxes for The World are on the right

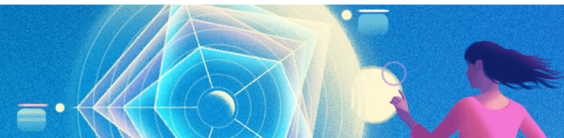


India vs The World WUR 2024 metrics comparison

India vs The World World University Rankings 2024 metrics boxplot

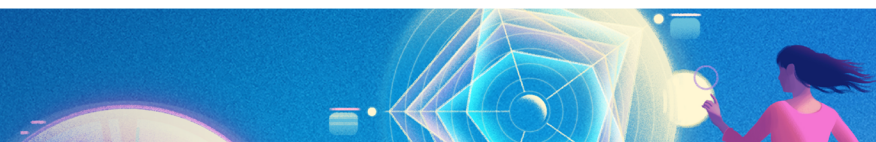
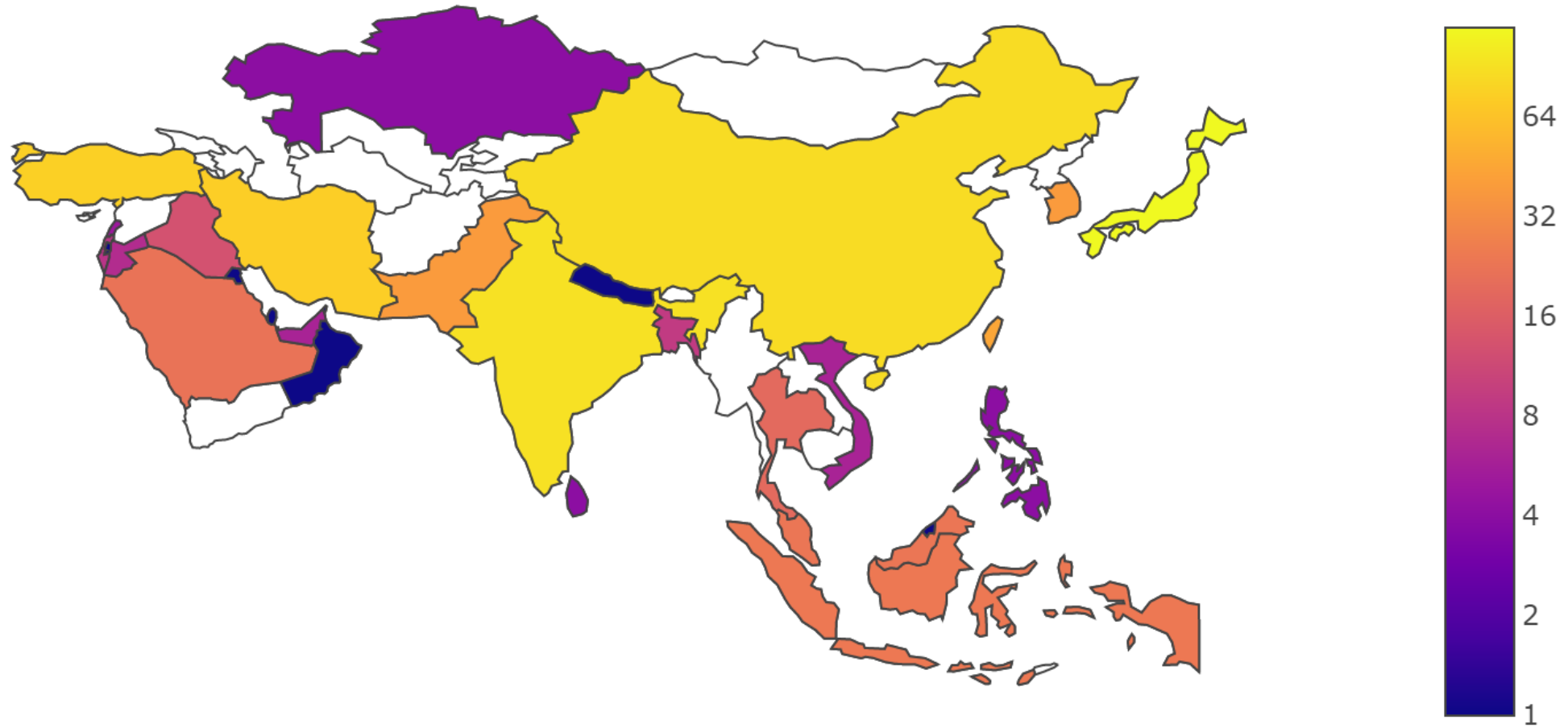


The boxes for India are on the left, the boxes for The World are on the right



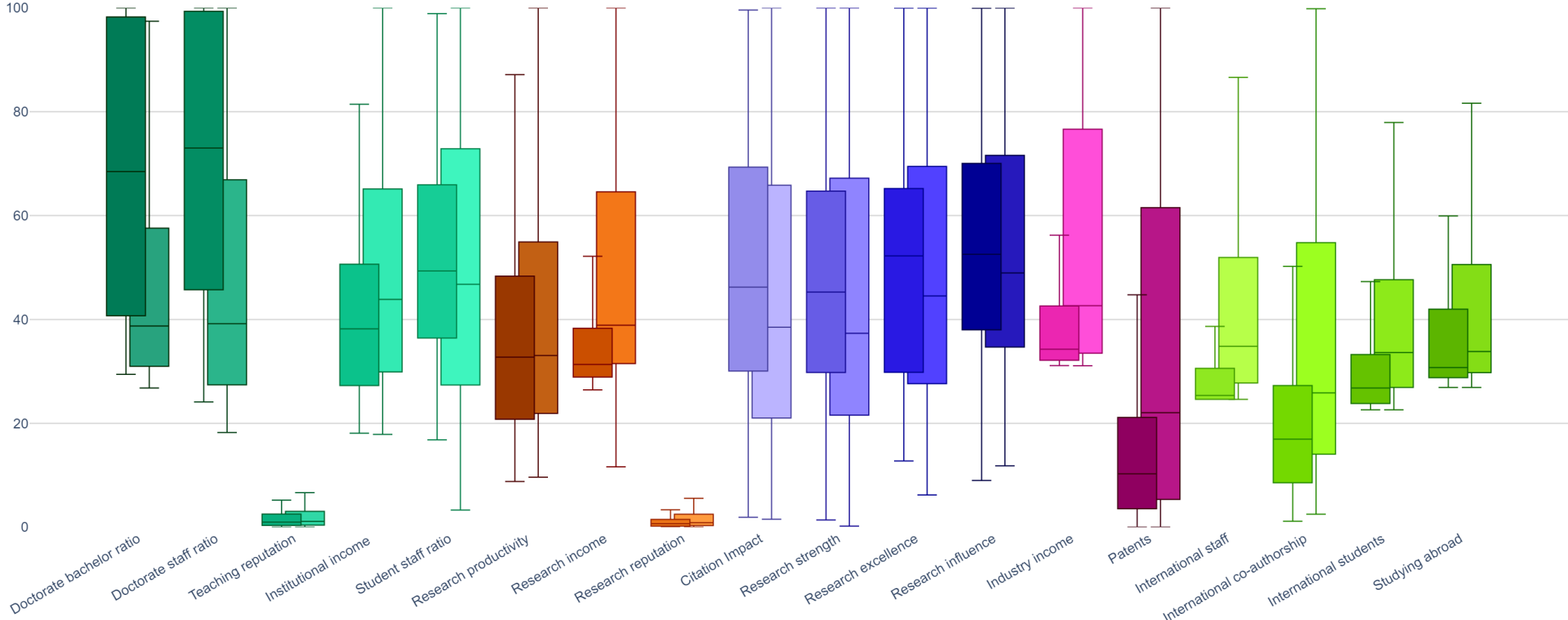
Number of universities per country/region in Asia

There are a total of 737 institutions in Asia ranked in the World University Rankings 2024, from 31 countries
91 institutions from India were ranked, which is the 2nd highest in Asia



India vs Asia WUR 2024 metrics comparison

India vs Asia World University Rankings 2024 metrics boxplot

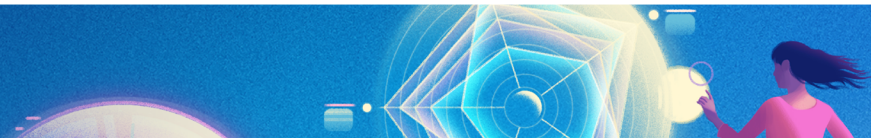
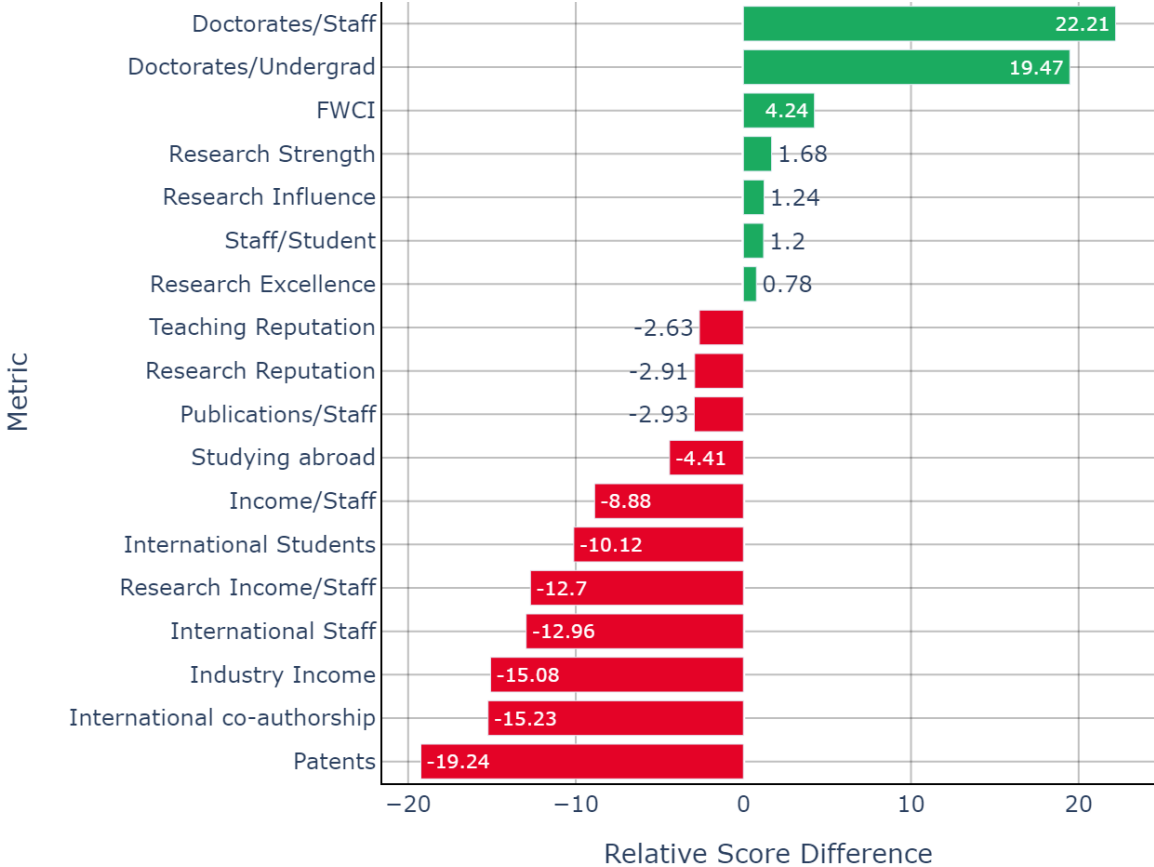


The boxes for India are on the left, the boxes for Asia are on the right

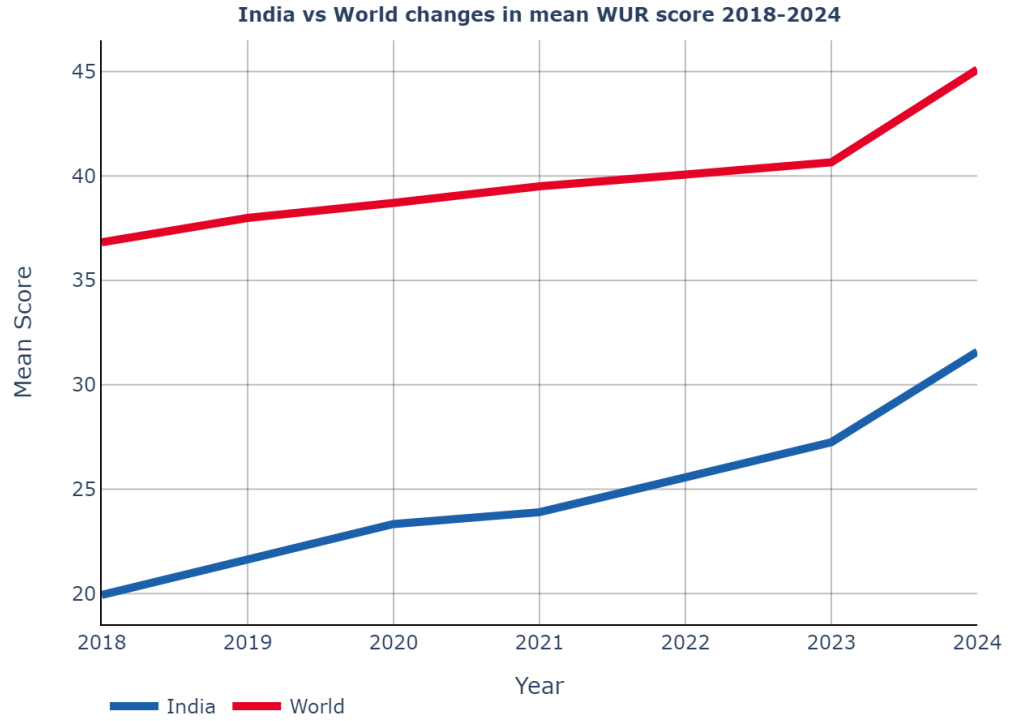
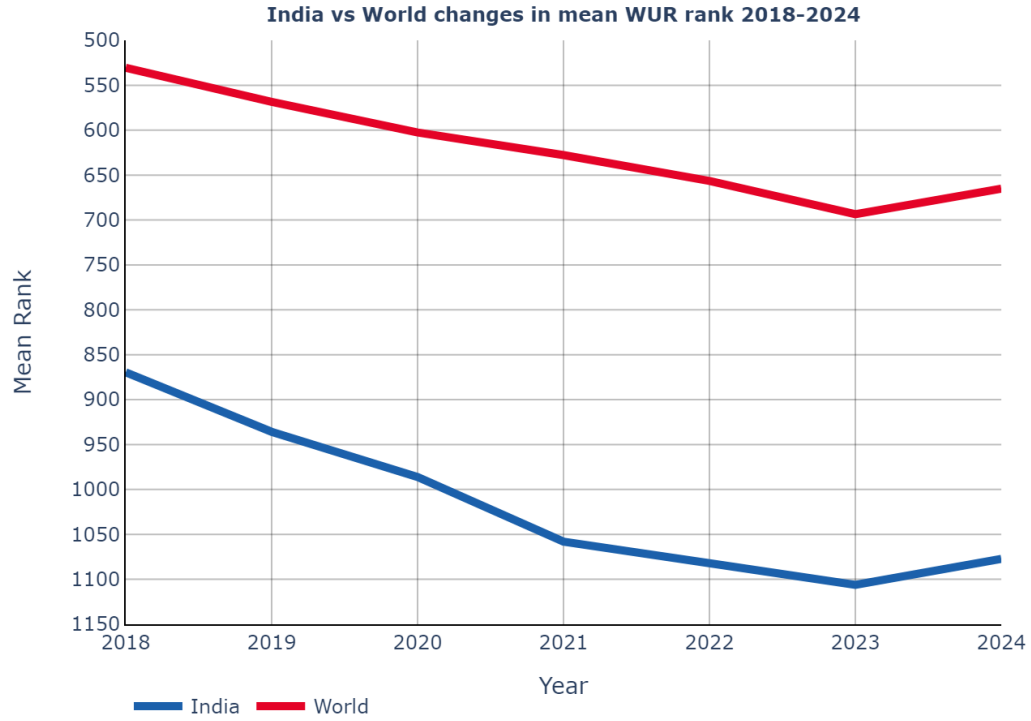


India vs Asia 2024 Metric Differences

India vs Asia Metric Relative Score Difference 2024

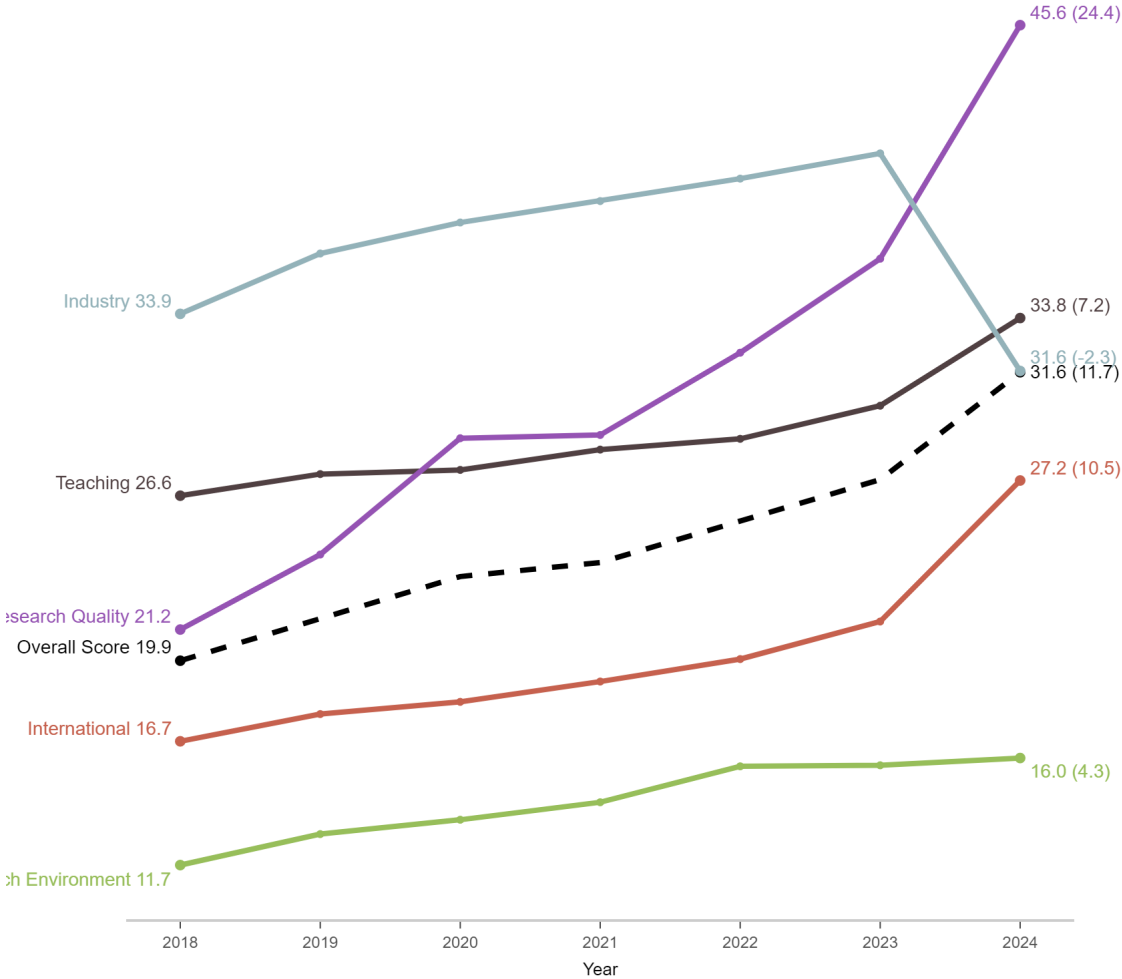


India vs World 2018-2024 Overall WUR changes

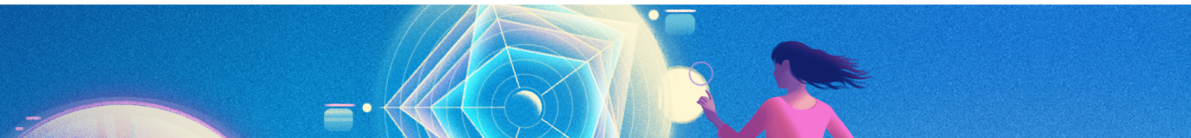
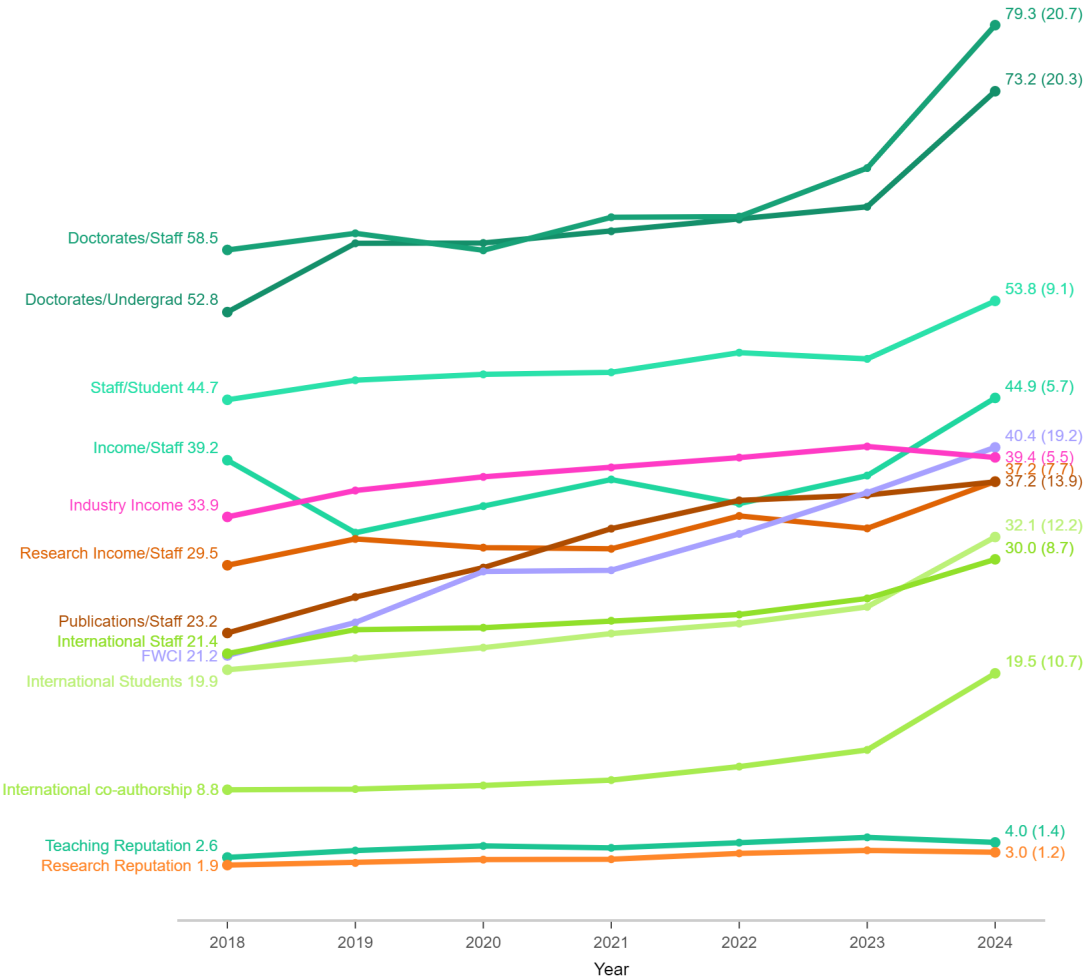


India in World changes in WUR scores 2018-2024

India in World: Changes in WUR pillar scores 2018-2024

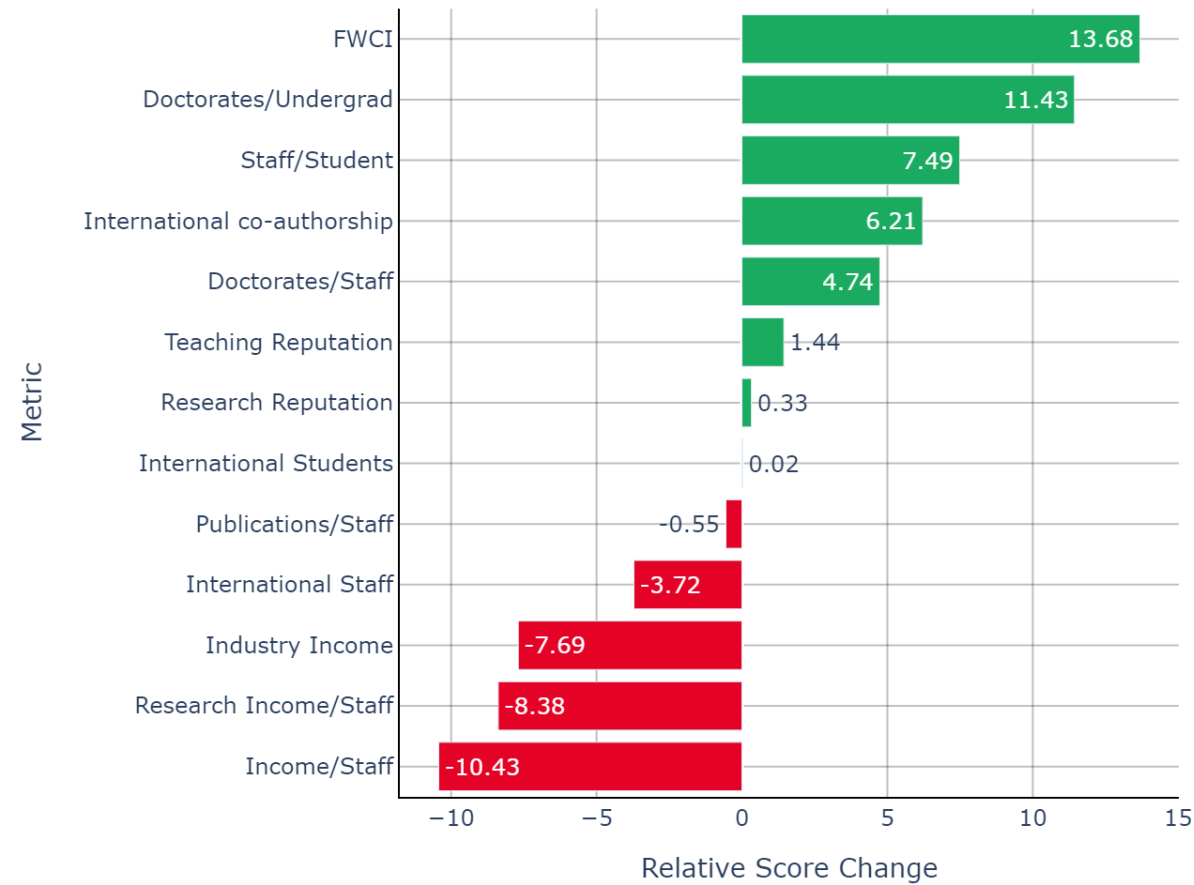


India in World: Changes in WUR metric scores 2018-2024

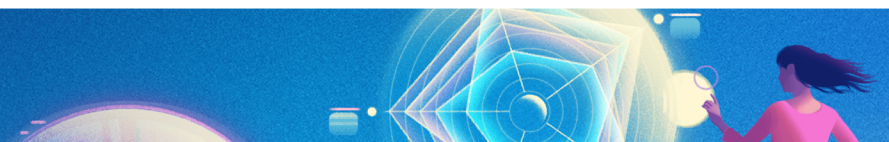
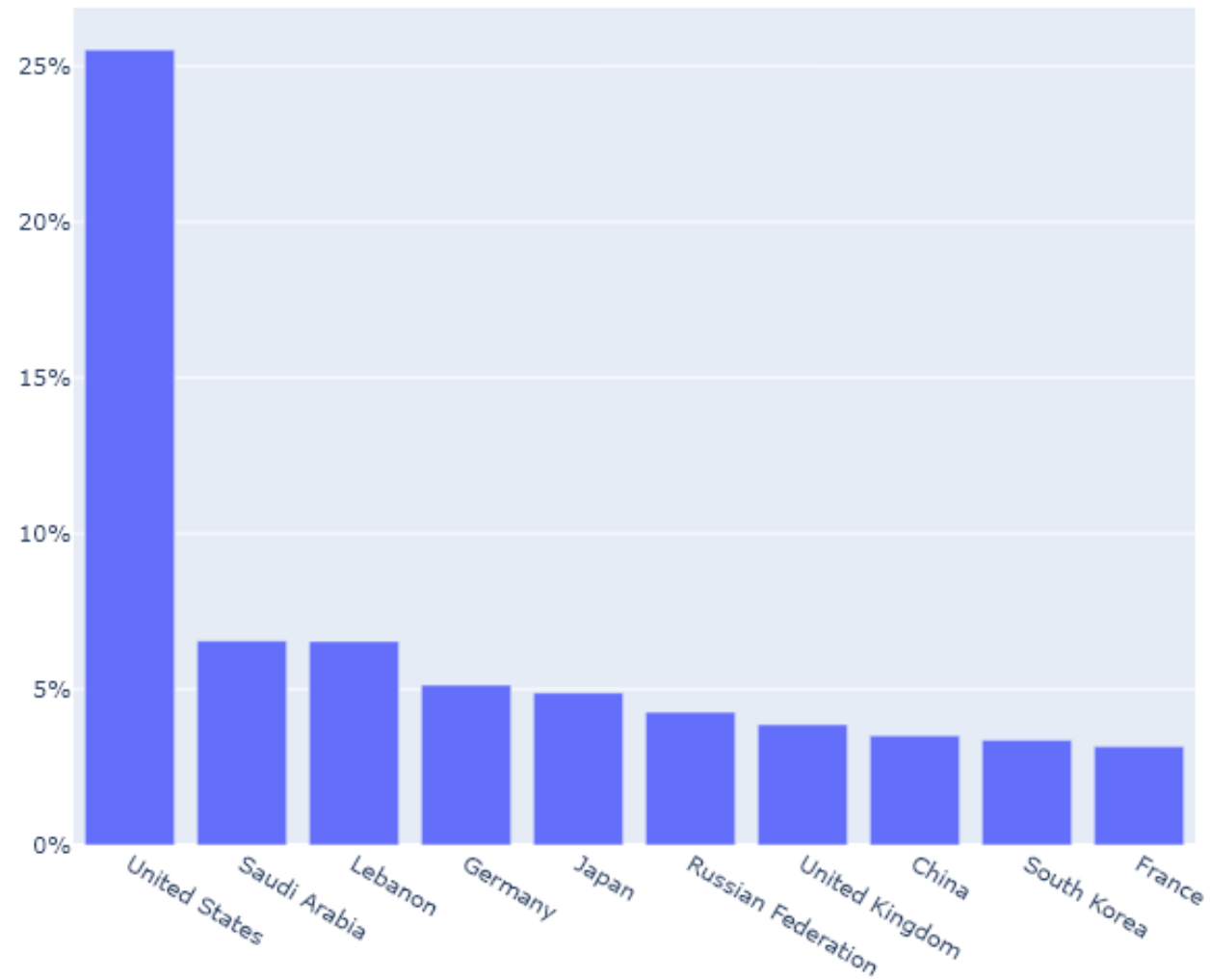


India vs World 2018-2024 Metric changes

India vs World Metric Relative Score Change 2018-2024



Overall vote origination by country - India 2023



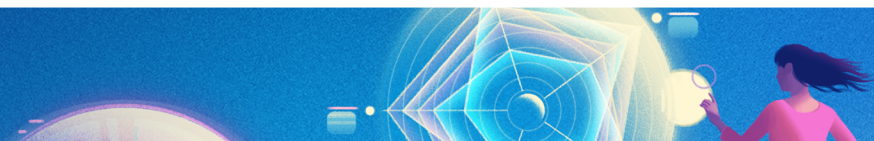
How to participate?



Eligibility Criteria

Participation in THE World University Rankings (or any other THE rankings) is always free of charge. However, there is a set of eligibility criteria

- Must teach at undergraduate level
- Publication requirements
 - At least 1000 publications in 5 years
 - At least 150 publications each year
 - Separate publication requirements for the subject rankings
- Must not be a subject specialist



How to take part

We need your help for the **institutional data**

1. Nominate a Data Provider

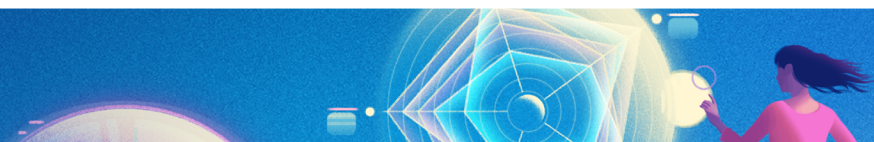
A Data Provider for your institution will need to be nominated.

Please email us at profilerankings@timeshighereducation.com

2. Connect to the Portal

Your Data Provider will receive login details to connect to the Data Collection Portal

The Portal will be open between 8 January and 30 March 2024



Data Collection Portal



World University Ranking 2022

Complete the stages of the data collection process

THE- Times Higher Education World

Introduction

Institution Profile

Data

Notes

Review, print & submit

Welcome to the *Times Higher Education (THE)* World University Rankings data collection portal.


The secure portal is structured to collect accurate and detailed information to enable us to develop a detailed, multifaceted performance profile of your institution to create the *THE* World University Rankings and related specialist rankings.


Please note that this portal is directly managed by Times Higher Education and is the only source of institutional data for the THE World University Rankings. The information that you submit will be combined with other sources of data and used to create a comprehensive and representative picture of your institution and of others around the world.


Only by submitting data via this portal can your institution be considered for inclusion in the *THE* World University Rankings and multiple related publications and products.


Thank you for taking the time to participate in this important global research project.


Please download our quick-start guide which explains the key aspects of the data collection process and how to navigate your institution's data collection portal account. We recommend that you read the information before you begin your data submission and refer to it during completion of the data collection process.


 English user guide


 Arabic user guide


 Mandarin user guide

 German user guide

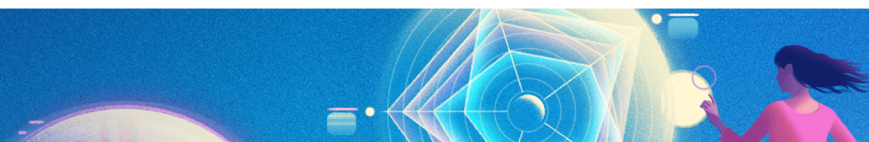
 French user guide

 Italian user guide

 Japanese user guide

 Korean user guide

Data collection materials are available for download in 12 languages



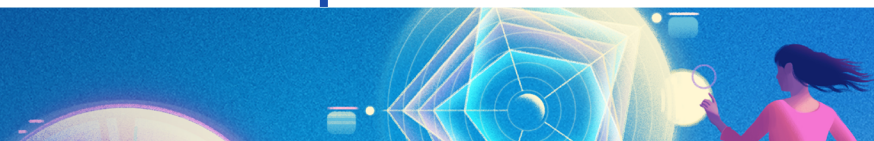
Data Collection Portal – institutional data

We collect **data** at the institution level and in our 11 subjects

- Staff and international staff
- Students and international students
- Undergraduate degrees awarded and doctorates awarded
- Income data

Since 2022: outbound exchange students

Art and Humanities
Business and Economics
Clinical and Health
Computer Science
Education
Engineering
Law
Life Sciences
Physical Sciences
Psychology
Social Sciences



Q&A



Participate in the Impact Rankings

Scan today:



Times Higher Education
Impact Rankings

