



World  
University  
Rankings 2024

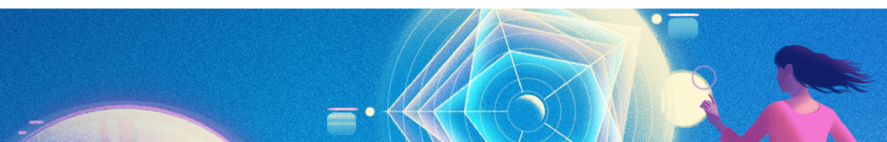
# THE 2024 World University Rankings Data Masterclass – Europe

Danae Banette  
Senior Rankings Product Owner



# Agenda

- World University Rankings 2024
- Methodology Review
- Europe Trends and Analyses
- How to participate
- Solutions



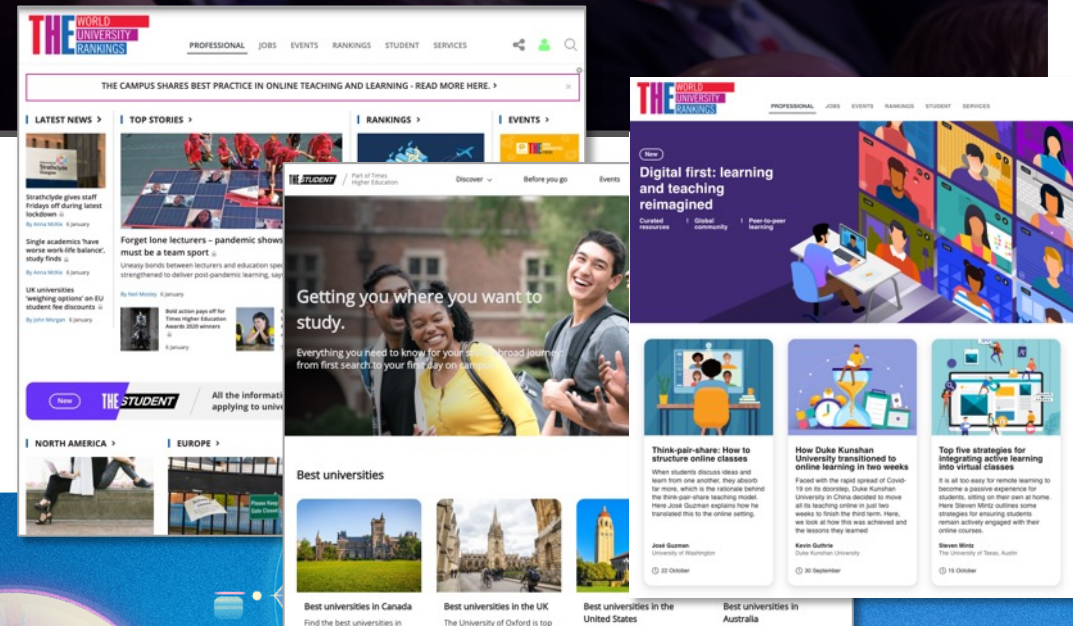
# 50+ Years of Insights

To help **universities** understand their position against their mission.  
To help **students** find and access the university best suited to their abilities and aspirations.  
To help **higher education** deliver transformational teaching, research and innovation.

1971

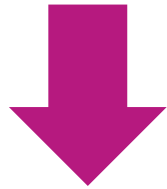


2023



# Our Rankings

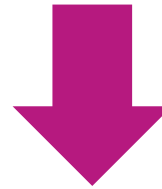
## TEACHING



**Focus:** student satisfaction, employer reputation, graduation rate + more

**Participation rules:** country specific

## RESEARCH



**Focus:** research output, research quality, research collaboration, reputation + more

**Participation rules:** 1,000+ publications over 5 years, teach undergraduates across a range of subjects

## IMPACT & SUSTAINABILITY

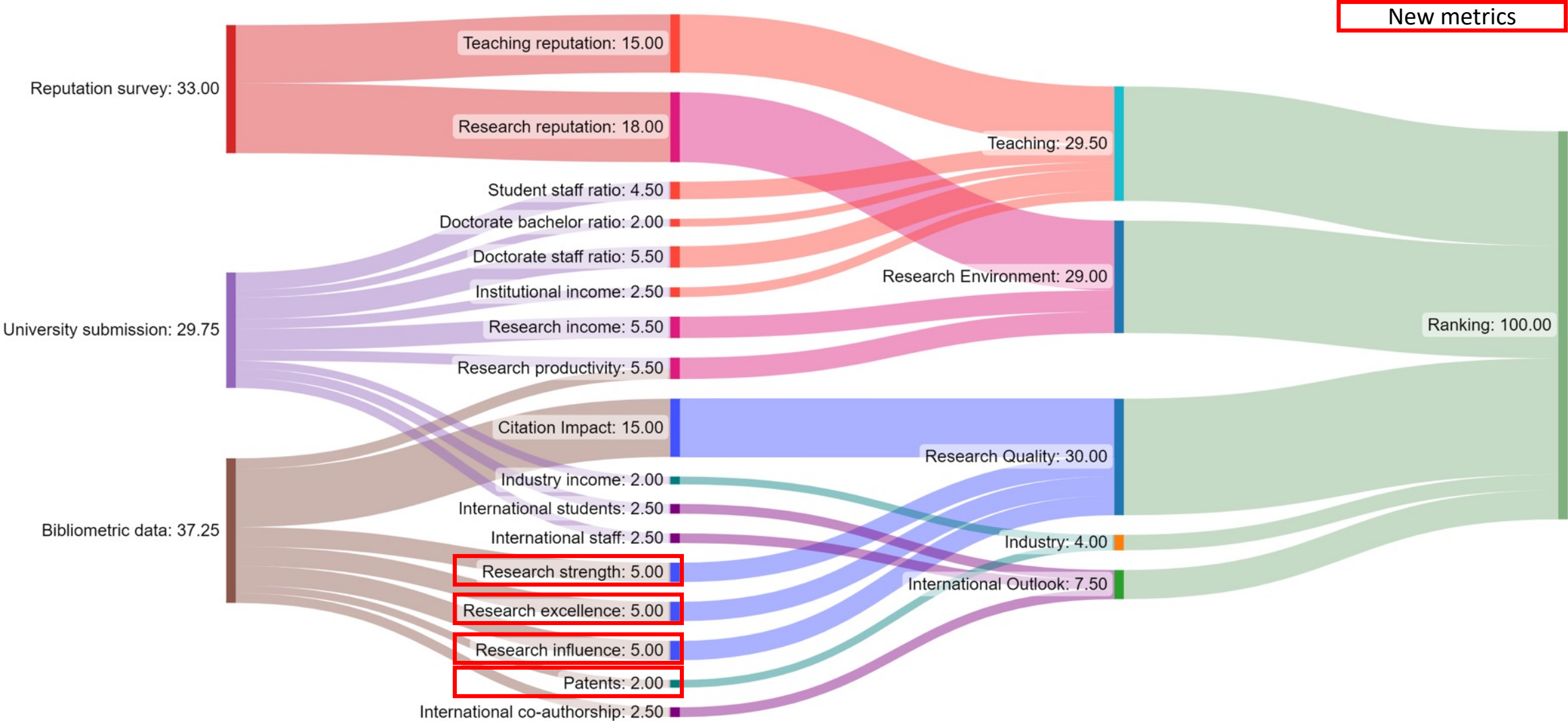


**Focus:** research, teaching, stewardship and outreach against the UN's 17 Sustainable Development Goals

**Participation rules:** all UG or PG higher education institutions



# Methodology



# The world's biggest university ranking

## Universities

The world's biggest university ranking

Universities submitted data

**2,673**

Number of countries represented

**127**

## Bibliometrics

In partnership with **ELSEVIER**

Research papers

**16.5m**

Citations

**134m**

## Universities Data

The world's largest data gathering exercise from universities

Data values

**411,789**

Data queries resolved

**34,455**

## Academic Survey

The world's largest academic survey

Respondents

**68,402**

Votes

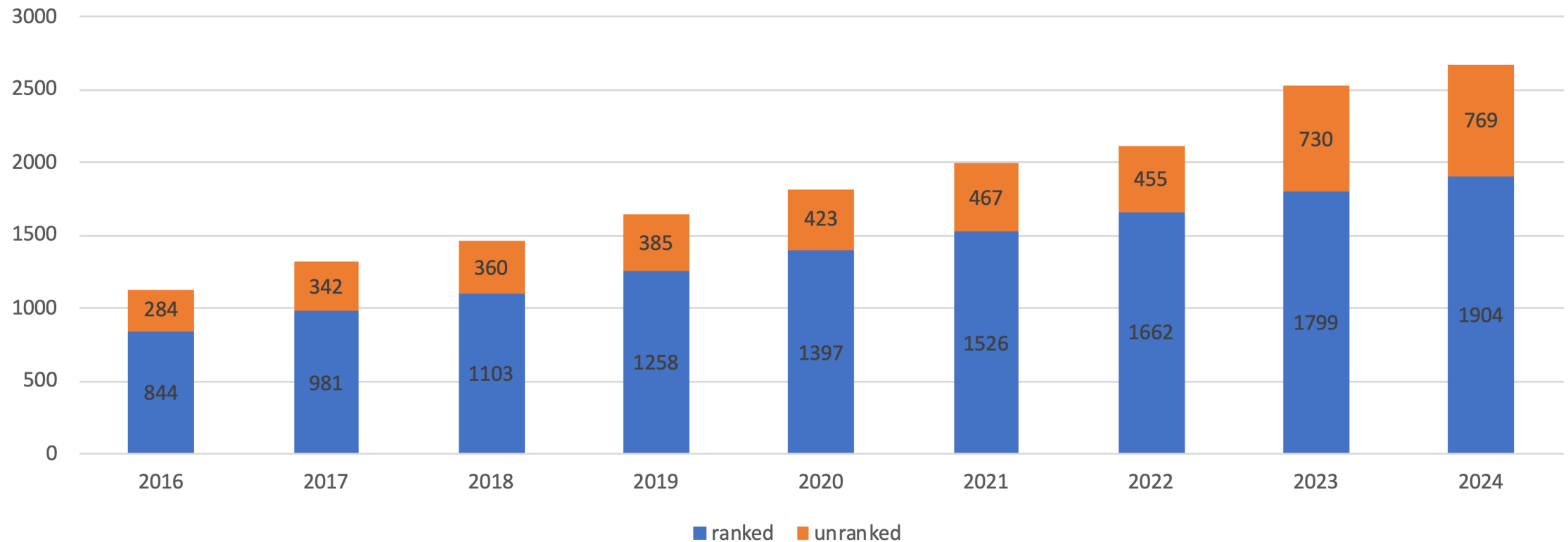
**944,509**

Countries

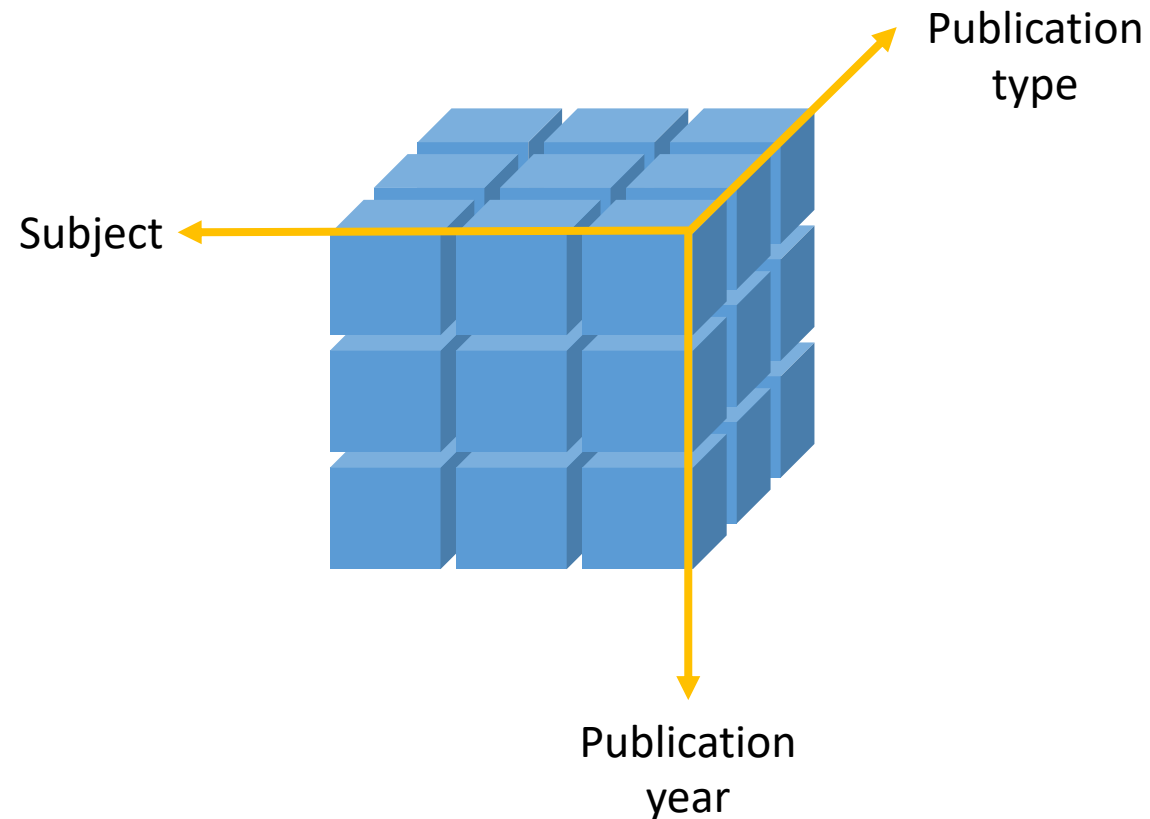
**166**

# 20<sup>th</sup> Anniversary of THE World University Rankings

Number of universities which submitted data to THE World University Rankings



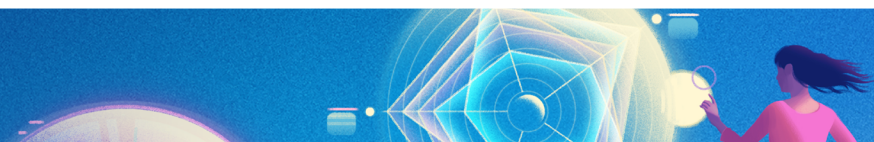
# What is Field Weighted Citation Impact?



Let's say I published a journal article in 2019 on artificial intelligence, and it received 6 citations so far...

...and the average number of citations received by publications of the same type, same year and same subject is 2...

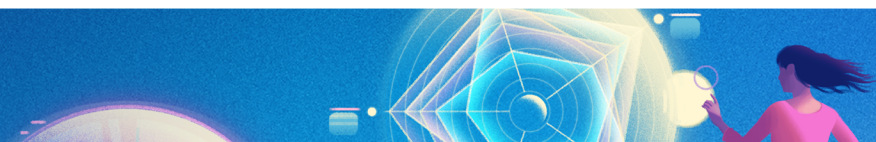
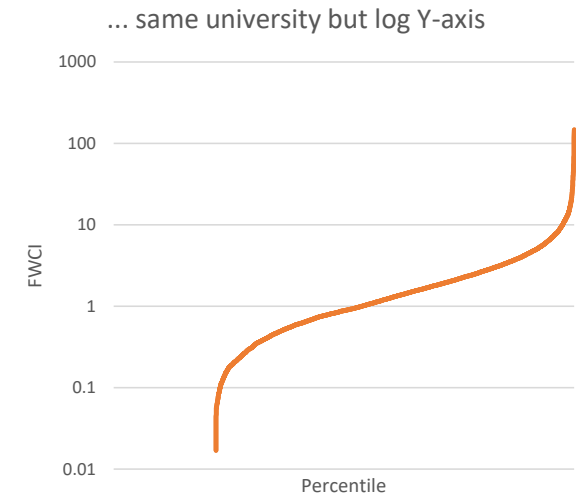
...then the FWCI of this publication is  $6/2 = 3$





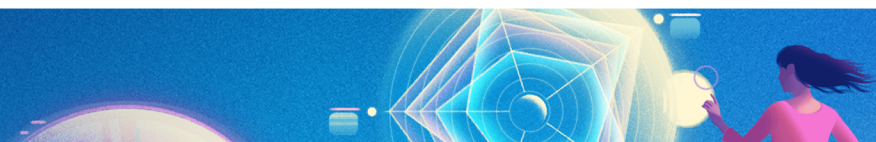
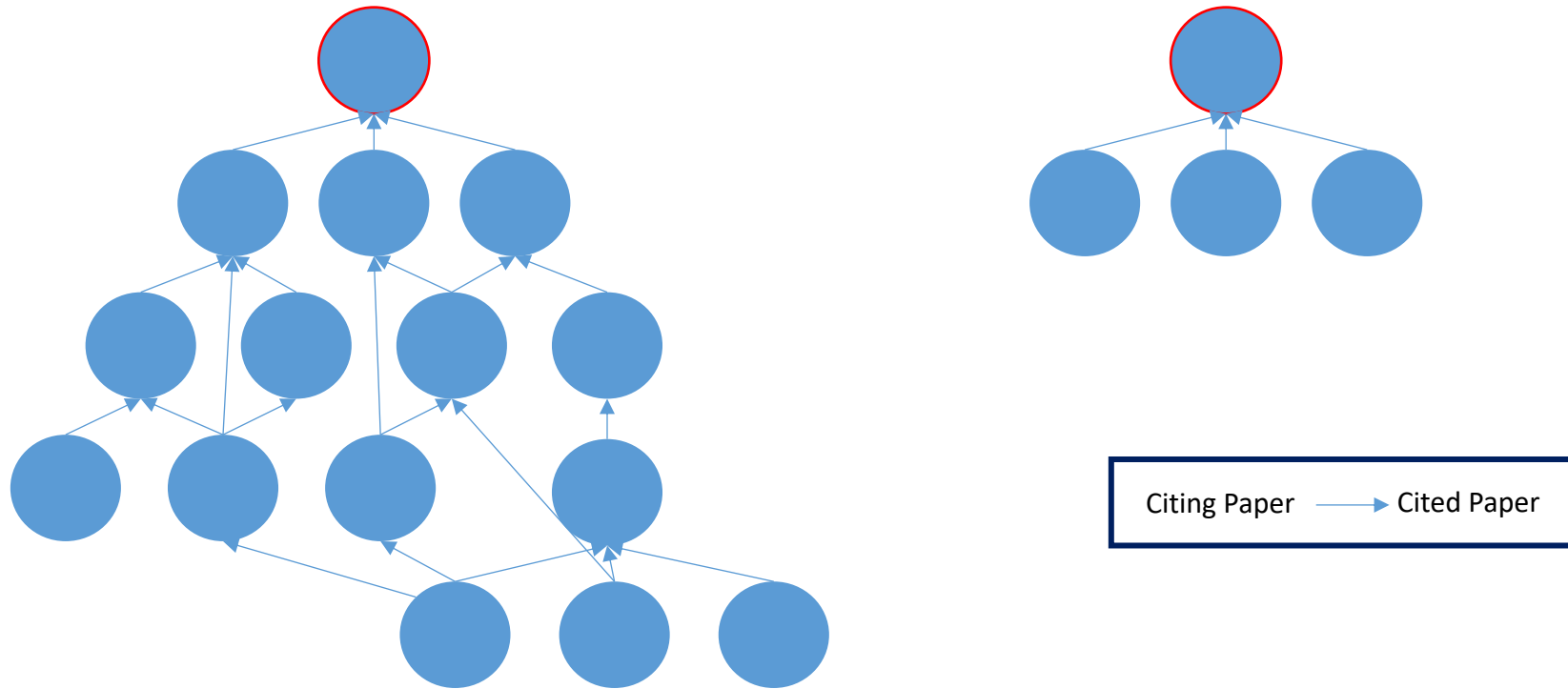
# THE World University Rankings Research Quality Metrics

- Citation Impact – Mean FWCI of an institution’s output, but with tweaks
  - Kilo-author papers
  - Country normalisation
- Research Strength – 75<sup>th</sup> percentile FWCI of an institution’s output
- Research Excellence – Number of papers in top 10 percent by FWCI
- Research Influence – Different from others research quality metrics
  - Not all citations are created equal
  - Citations from important papers counts more
  - How to define “important papers”?



# Research Influence - Papers

Both papers have 3 citations. Which one is likely to be more “influential”?

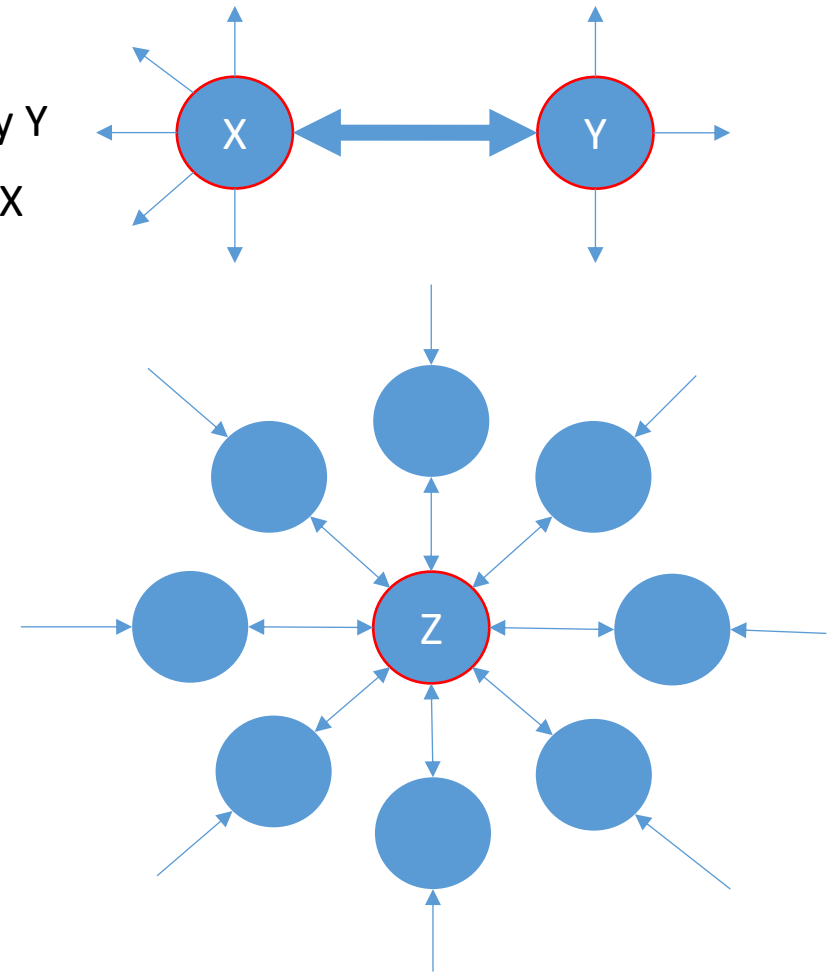


# Research Influence - Universities

In Computer Science in 2022:

- University X has a set of papers with 1000 citations, all from University Y
- University Y has a set of papers with 900 citations, all from University X
- Papers from X & Y universities do cite other universities papers
- University Z has a set of papers with 800 citations, from universities around the world, including universities who receive over 10000 citations for all their papers

**Papers from University Z had the least citations, but it is the most influential university of these 3.**



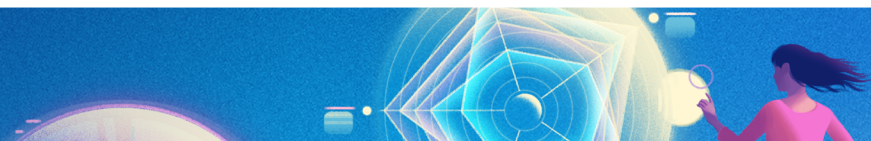
# Research Influence – What is it?

Research Influence looks at the network of citations around papers to understand what impact they are having around the world.

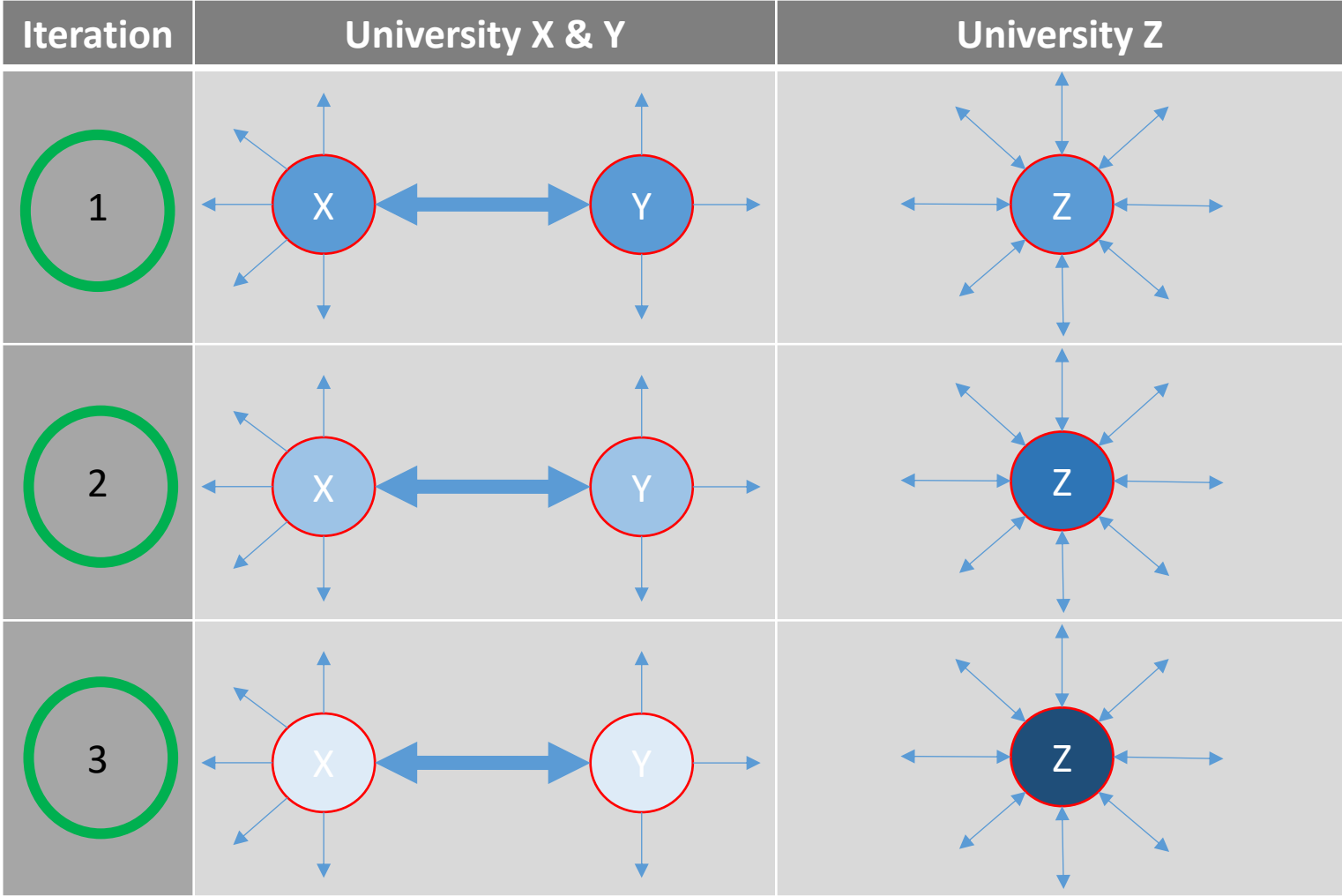
In essence, it works like a popularity contest for papers. It's not just about the quantity of citations but also the quality, with citations from reputable papers carrying more weight.

Each paper gets an influence score based on how many other papers cite it and how influential those citing papers are. If a lot of influential papers cite a paper, it gets a higher influence score.

The calculation for Research Influence is based on Google's "[Page Rank](#)" algorithm.



# Research Influence – How it works



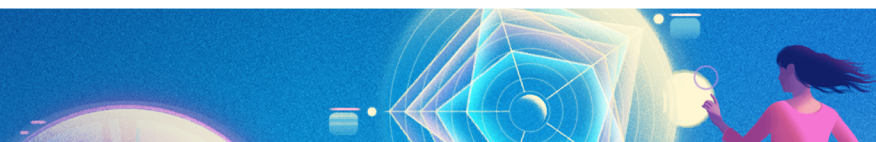
*The diagram shows the effect at university level which is an aggregation of the papers produced by the university; this is done to aid understanding. The algorithm works at the paper level.*

Deeper Blue indicates more Research Influence



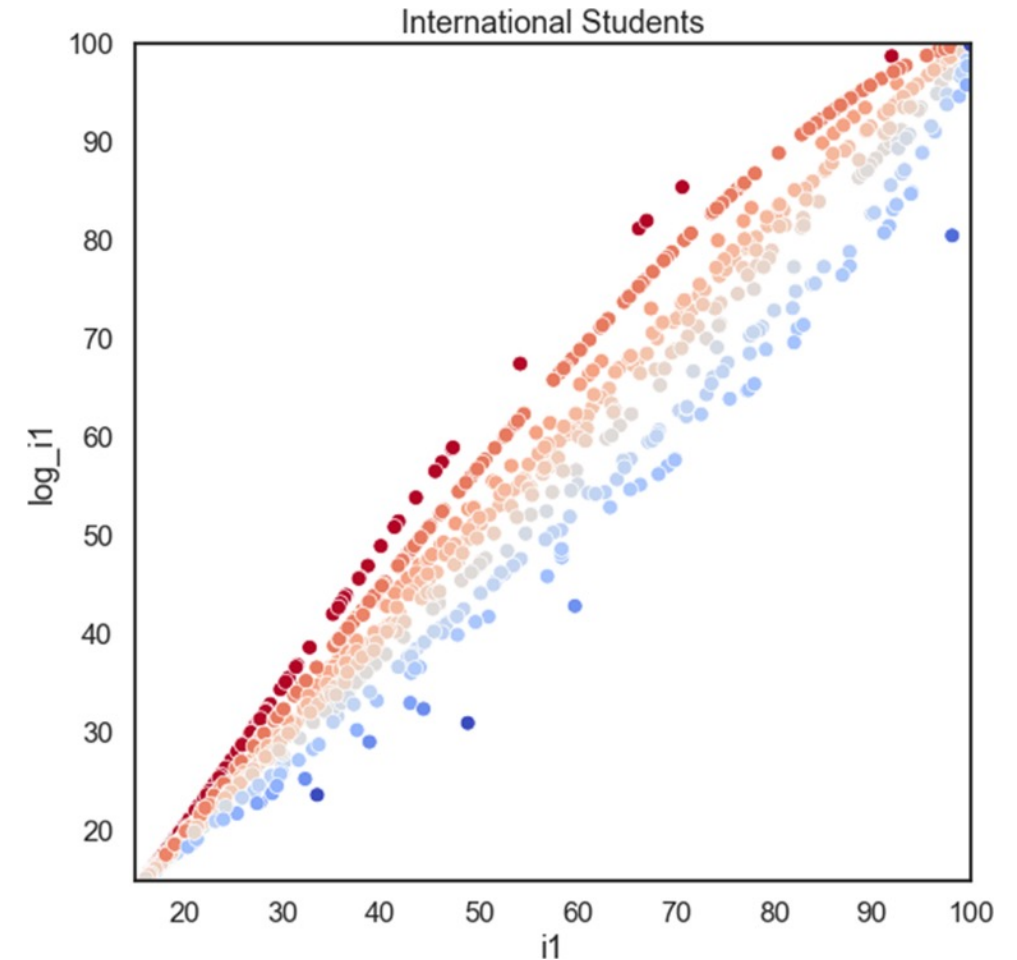
# Industry: Patents

- The extent to which universities are supporting their national economies through technology transfer is an area that deserves greater recognition. We will be introducing an additional measure.
- Directly measures research output, specifically **how much an institution's research is cited by patents**. This is similar to one that we already use within the THE Impact Rankings (in SDG 9: Industry, Innovation and Infrastructure).
- This measure is subject weighted to avoid penalising universities producing research in fields low in patents.
- Normalised by staff numbers.



# International Outlook

- Large countries had been disadvantaged compared to small countries in our international metrics, in that it is “easier” for staff and students in small countries to work/study abroad.
- The existing metrics are now normalised to account for the populations size:
  - Proportion of international students
  - Proportion of international staff
  - Proportion of publications with at least one co-author from an international institution
- New Studying abroad metric at zero weight



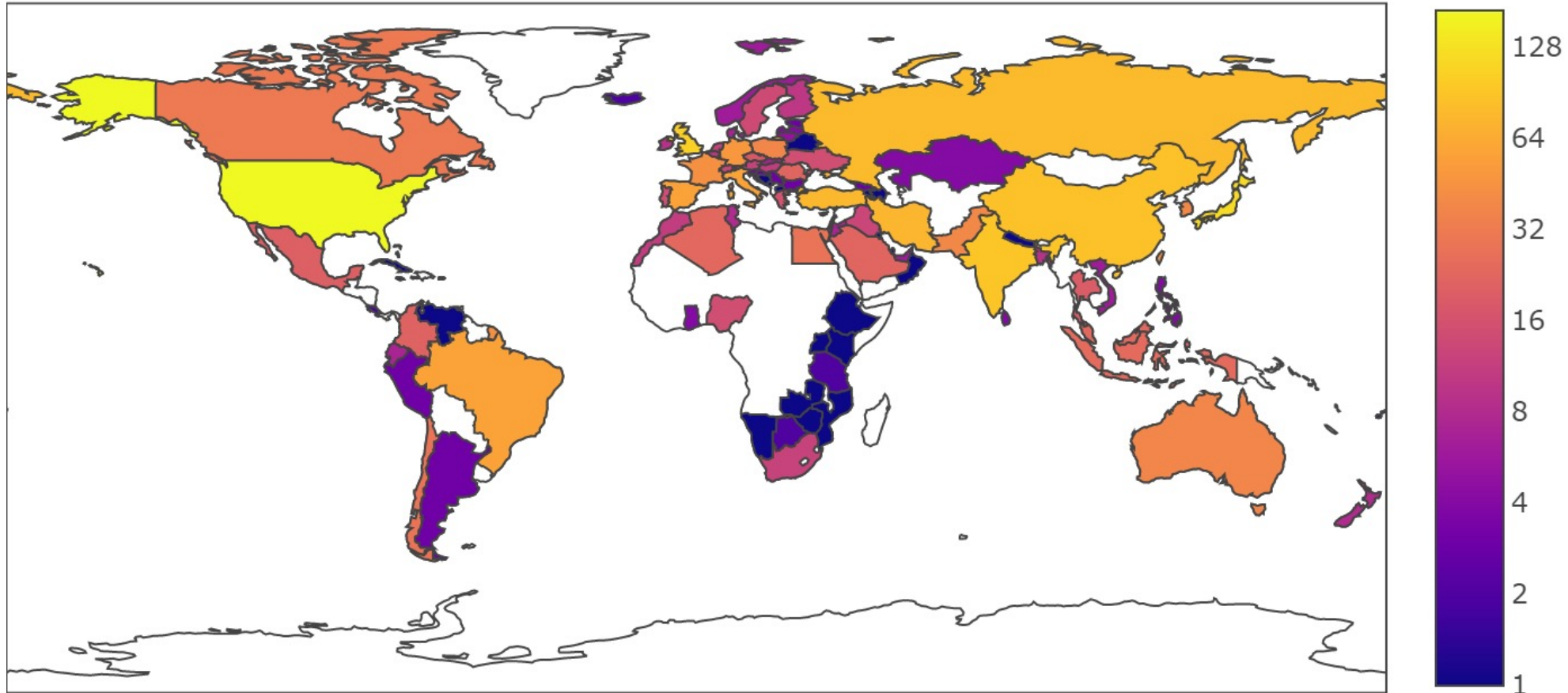
# Europe Trends and Analyses





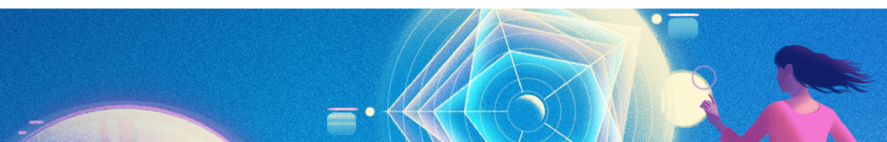
# Universities per country/region in the World in WUR 2024

There are a total of 1904 institutions in The World ranked in the World University Rankings 2024, from 108 countries  
664 institutions from Europe were ranked

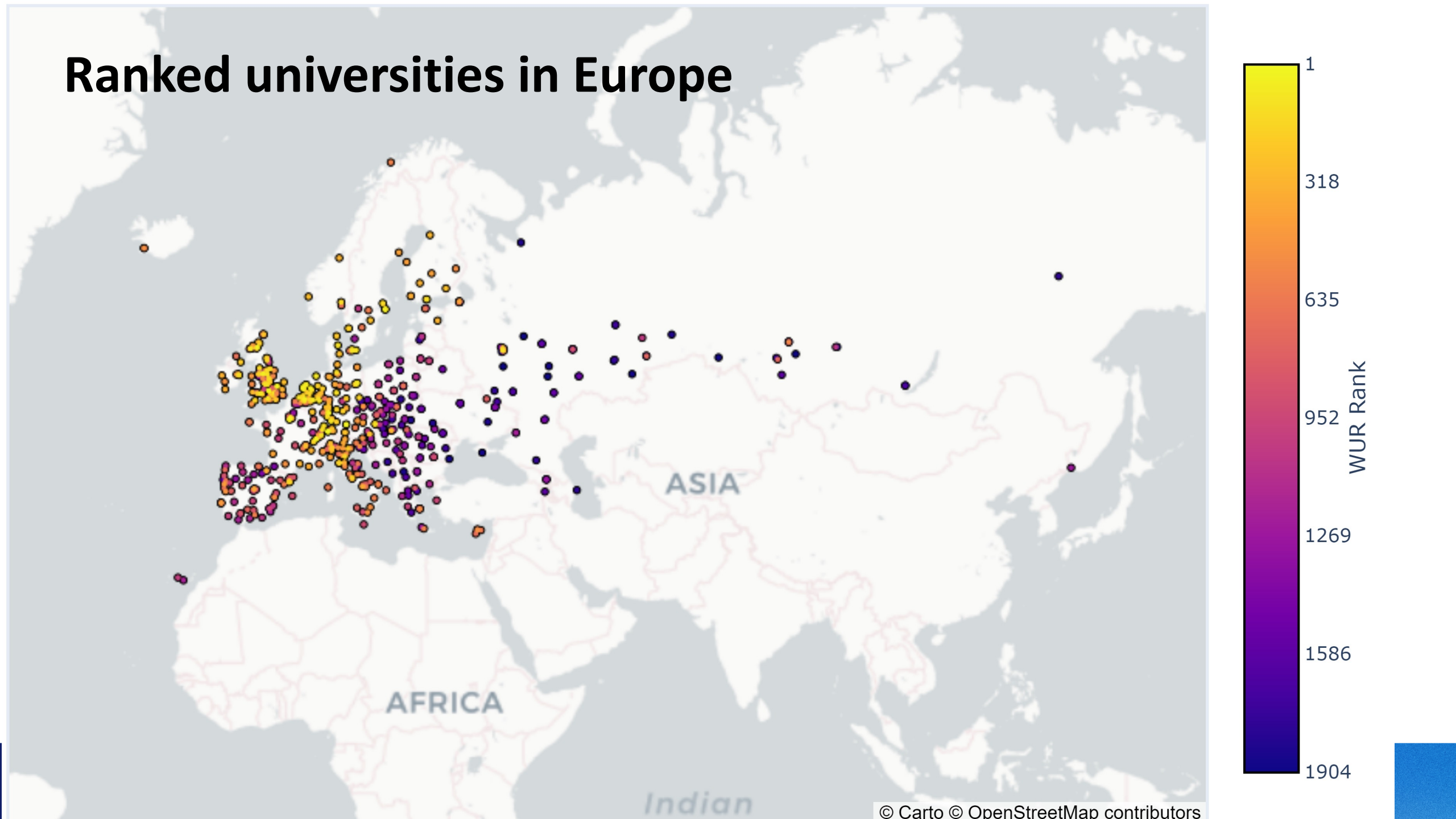


# Global top 10

Institution	Country	This year	Last year
University of Oxford	United Kingdom	1	1
Stanford University	United States	2	=3
Massachusetts Institute of Technology	United States	3	5
Harvard University	United States	4	2
University of Cambridge	United Kingdom	5	=3
Princeton University	United States	6	7
California Institute of Technology	United States	7	6
Imperial College London	United Kingdom	8	10
University of California, Berkeley	United States	9	8
Yale University	United States	10	9

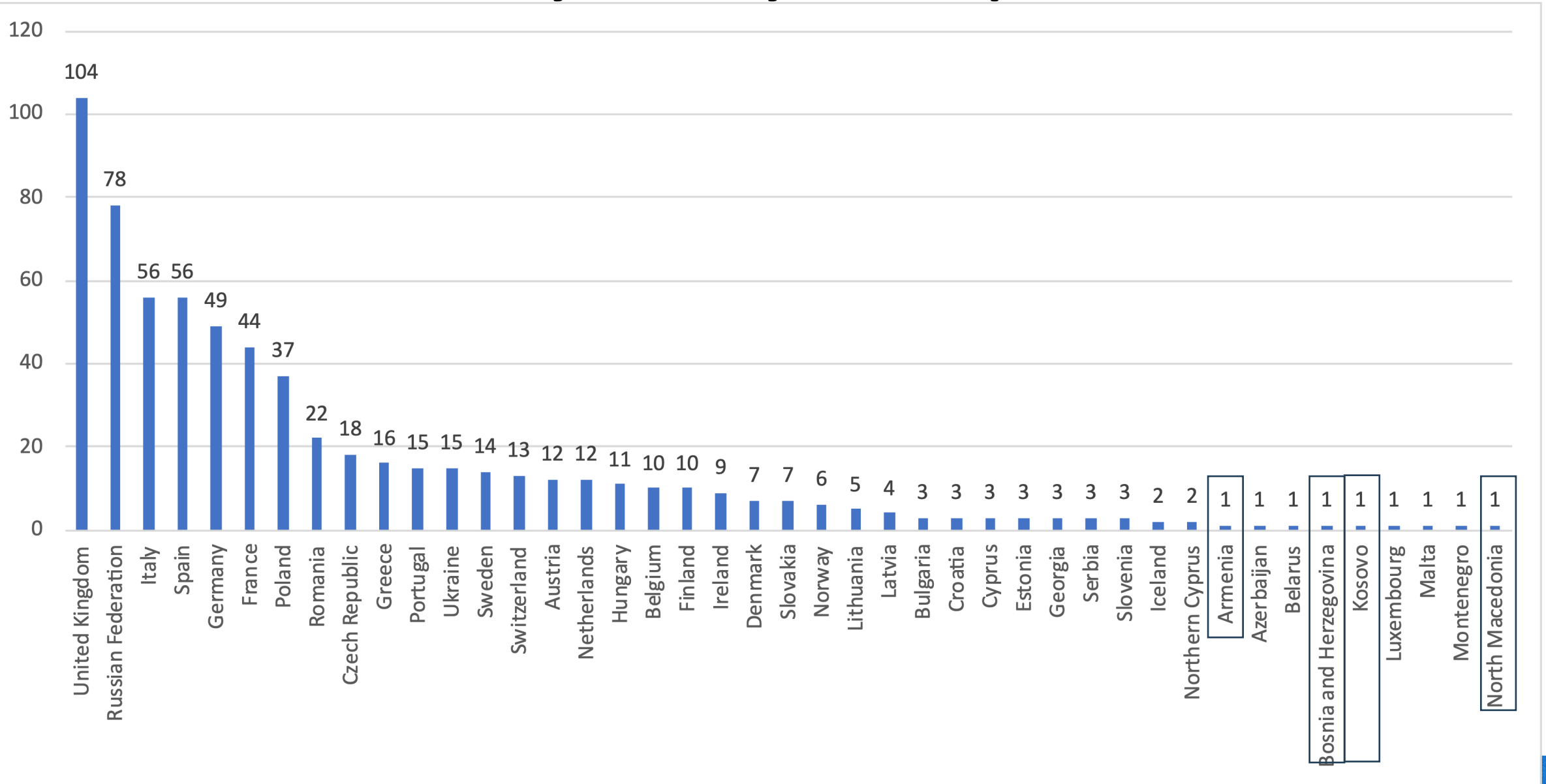


# Ranked universities in Europe



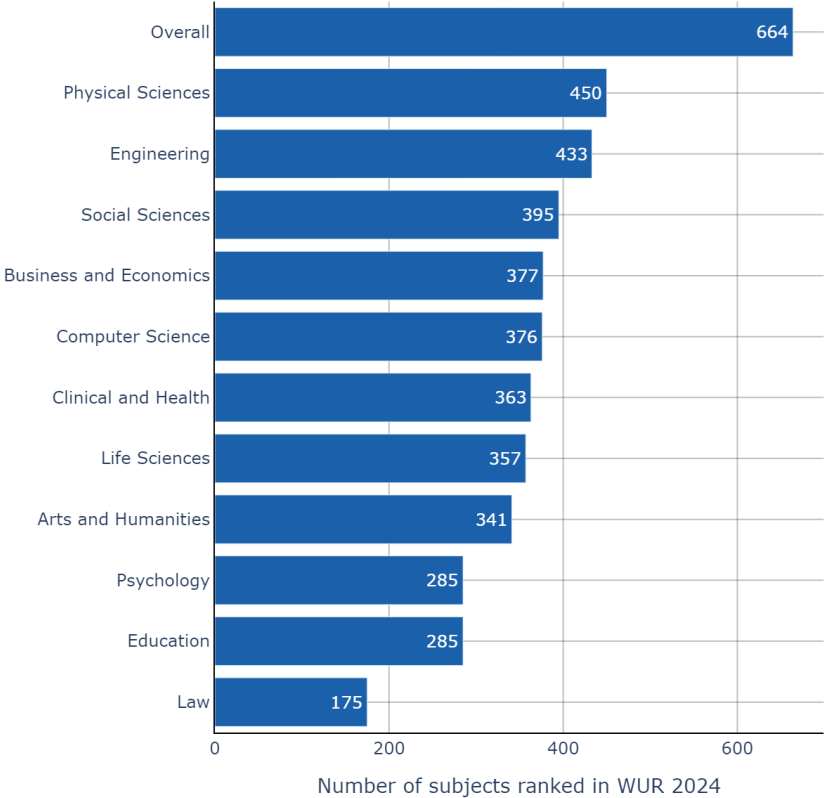


# Ranked universities by country in Europe

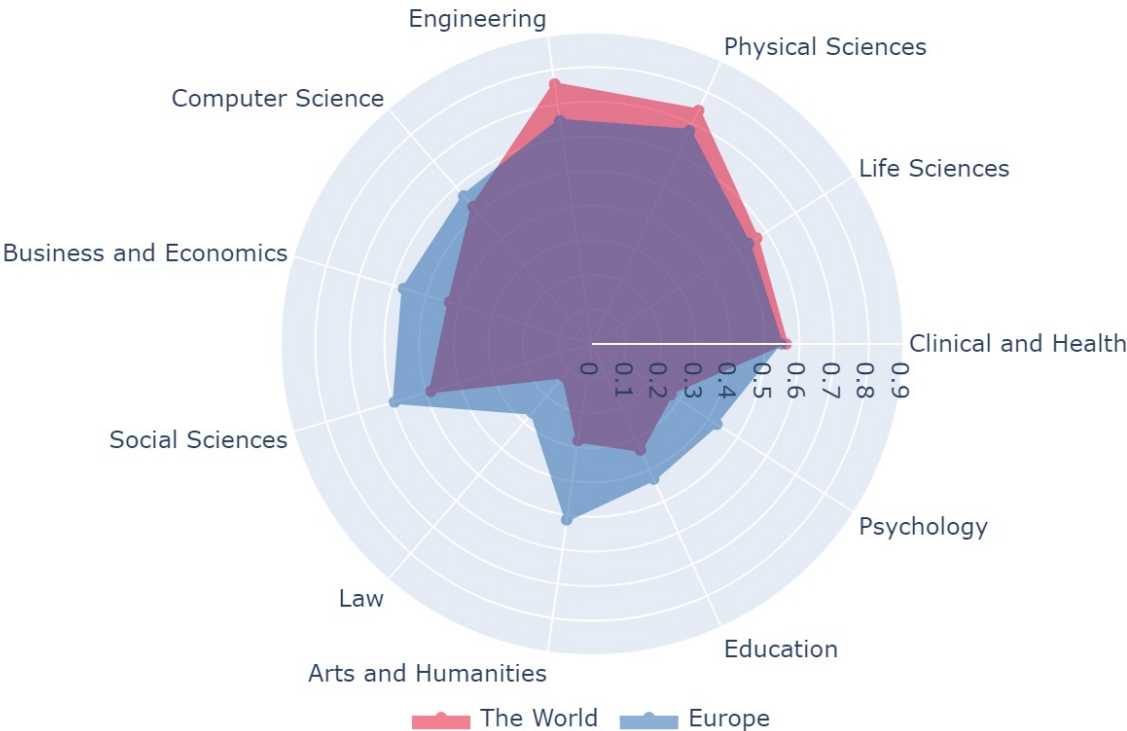


# Europe vs the World WUR 2024 subjects analysis

Europe subjects ranked in WUR 2024



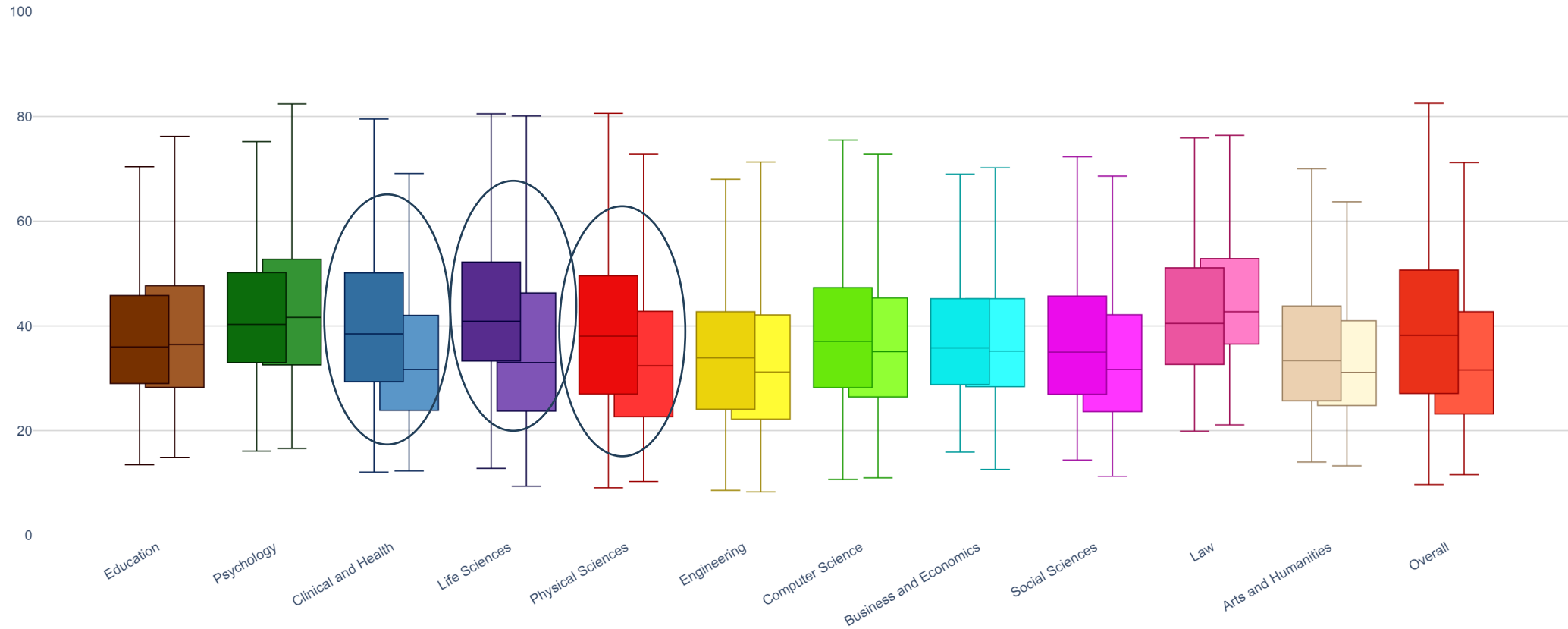
Percentage of universities with subjects ranked in WUR 2024



Across Europe, Physical Sciences was the most frequently ranked subject in 2024 where it was ranked for 450 universities. Law was the least frequently ranked subject in 2024 with just 175 universities ranked.

# Europe vs the World WUR 2024 subjects comparison

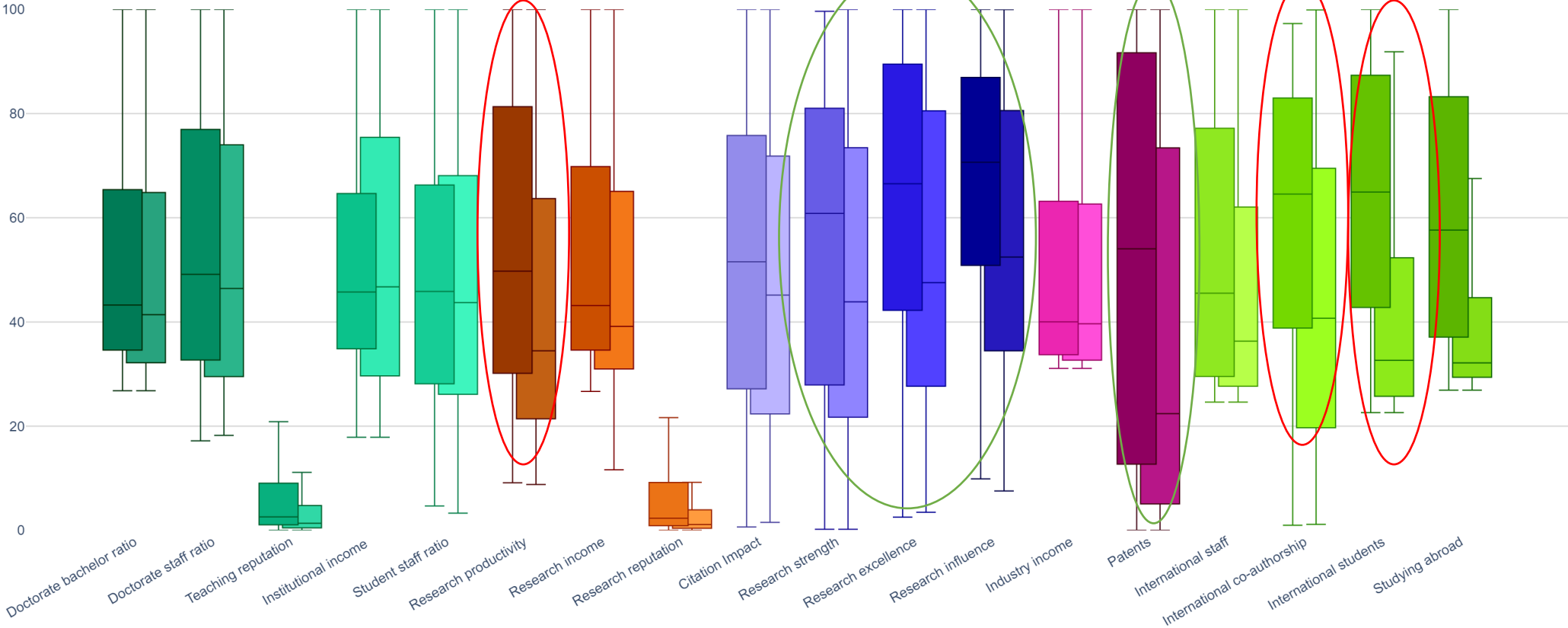
Europe vs The World World University Rankings 2024 subjects boxplot



The boxes for Europe are on the left, the boxes for The World are on the right

# Europe vs the World WUR 2024 metrics comparison

Europe vs The World World University Rankings 2024 metrics boxplot

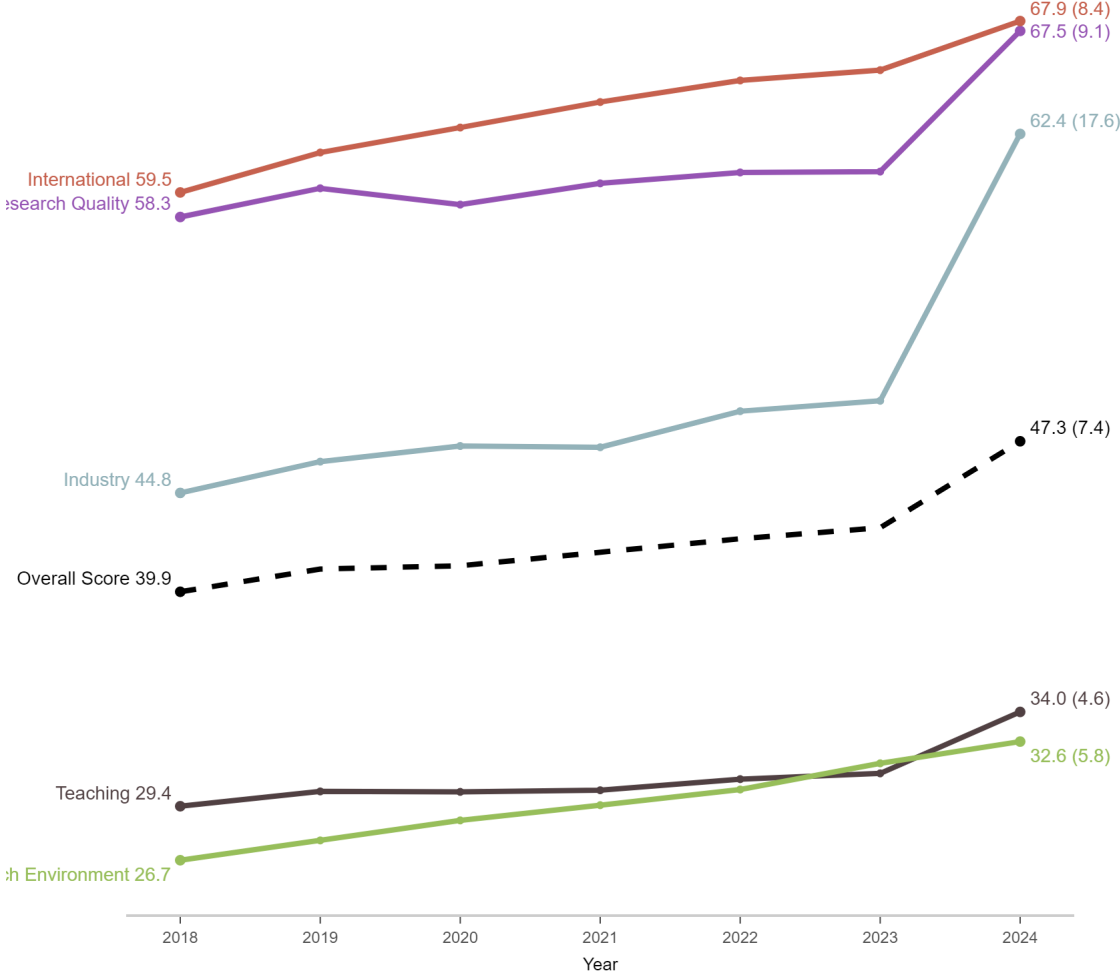


The boxes for Europe are on the left, the boxes for The World are on the right



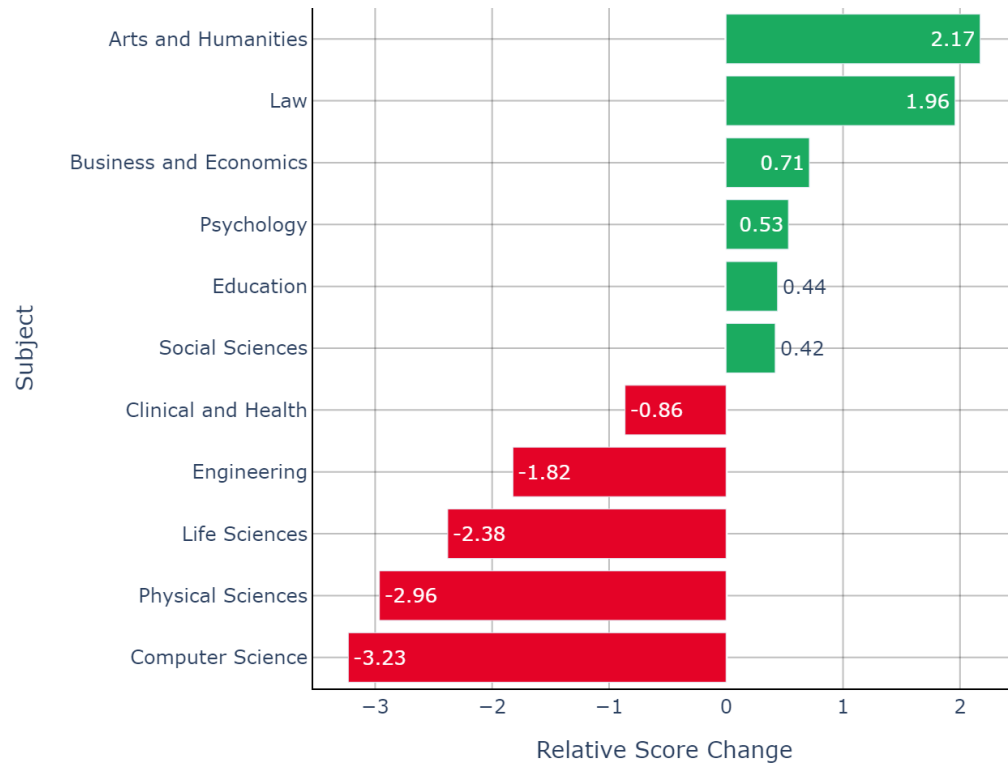
# Europe changes in WUR scores 2018-2024

Europe in The World: Changes in WUR pillar scores 2018-2024

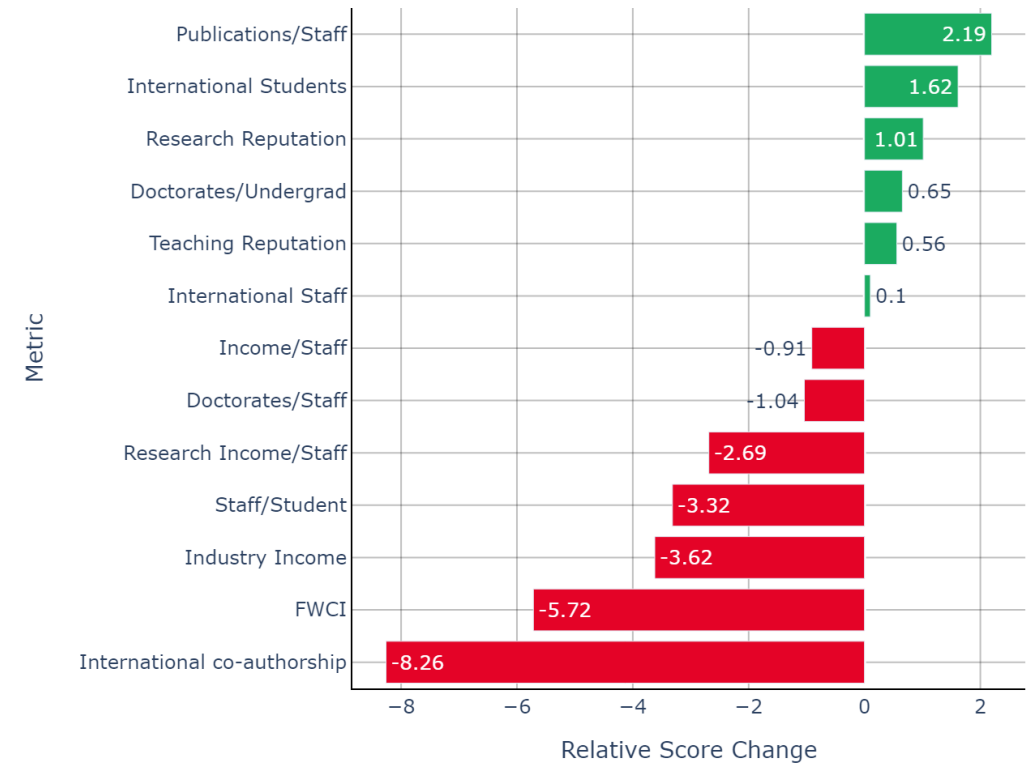


# Subject and Metric Trend Analysis 2018-2024

Europe vs The World Subject Relative Score Change 2018-2024

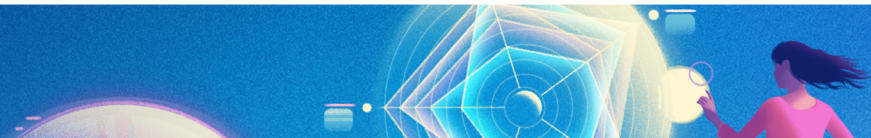
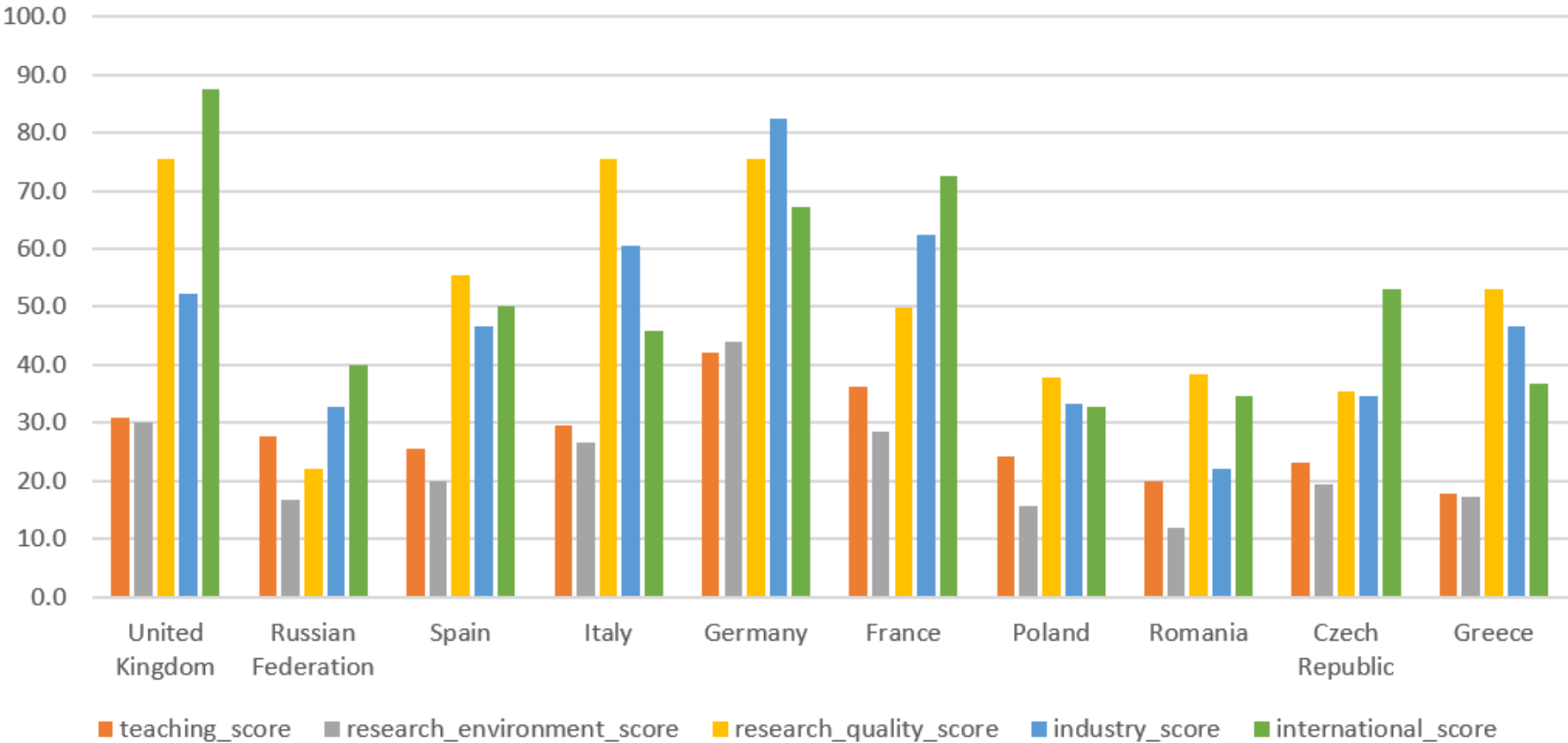


Europe vs The World Metric Relative Score Change 2018-2024

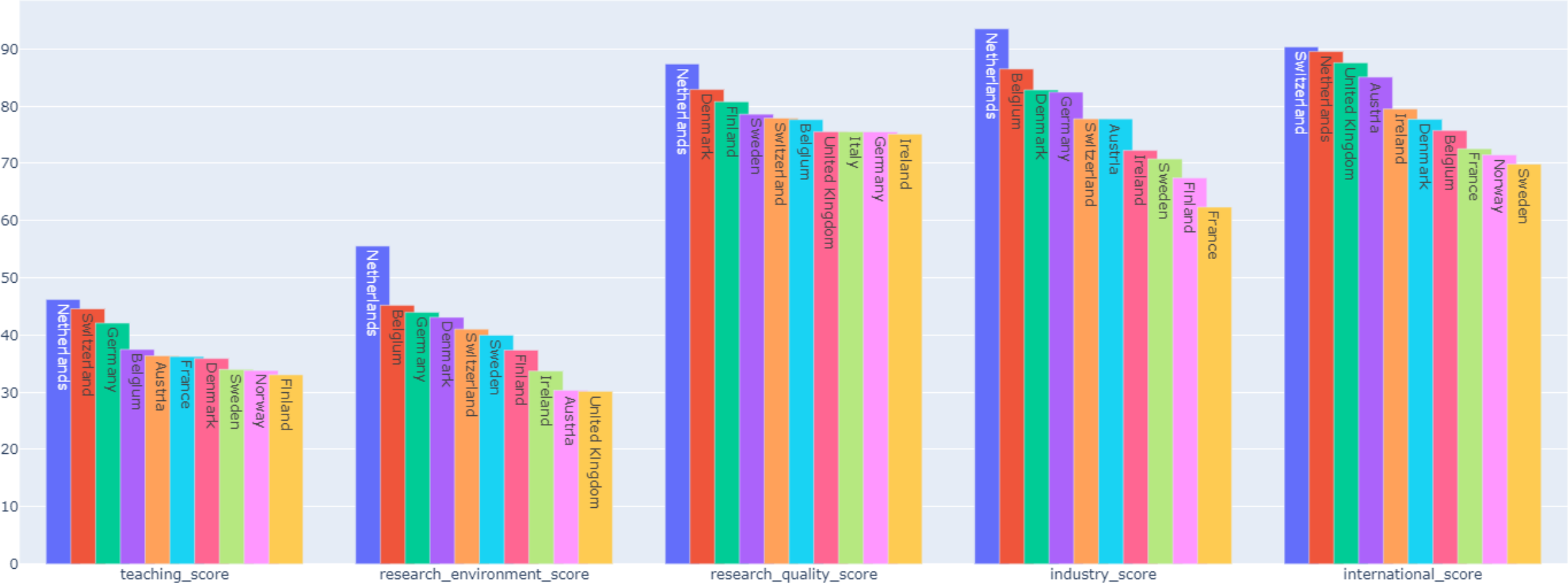


# Pillar scores of the 10 European countries with most unis

Pillar scores of Top 10 European countries

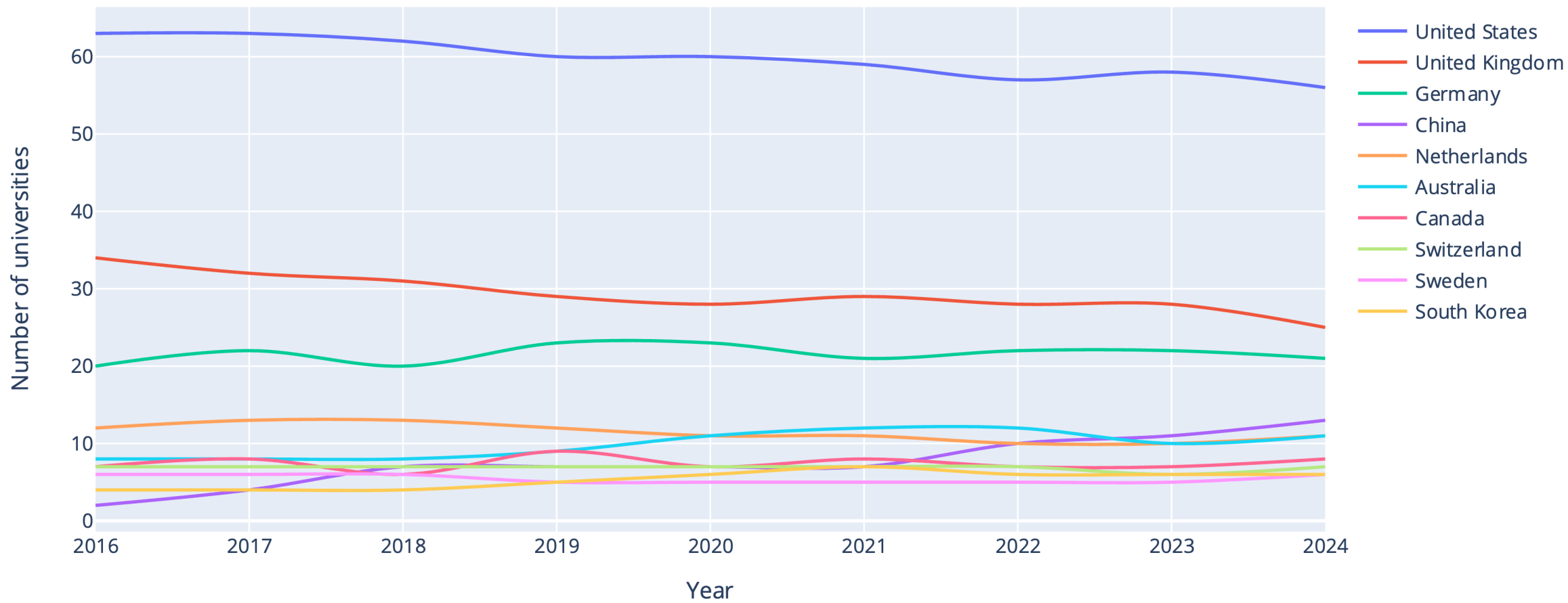


# Pillar performance (countries with >6 ranked unis)



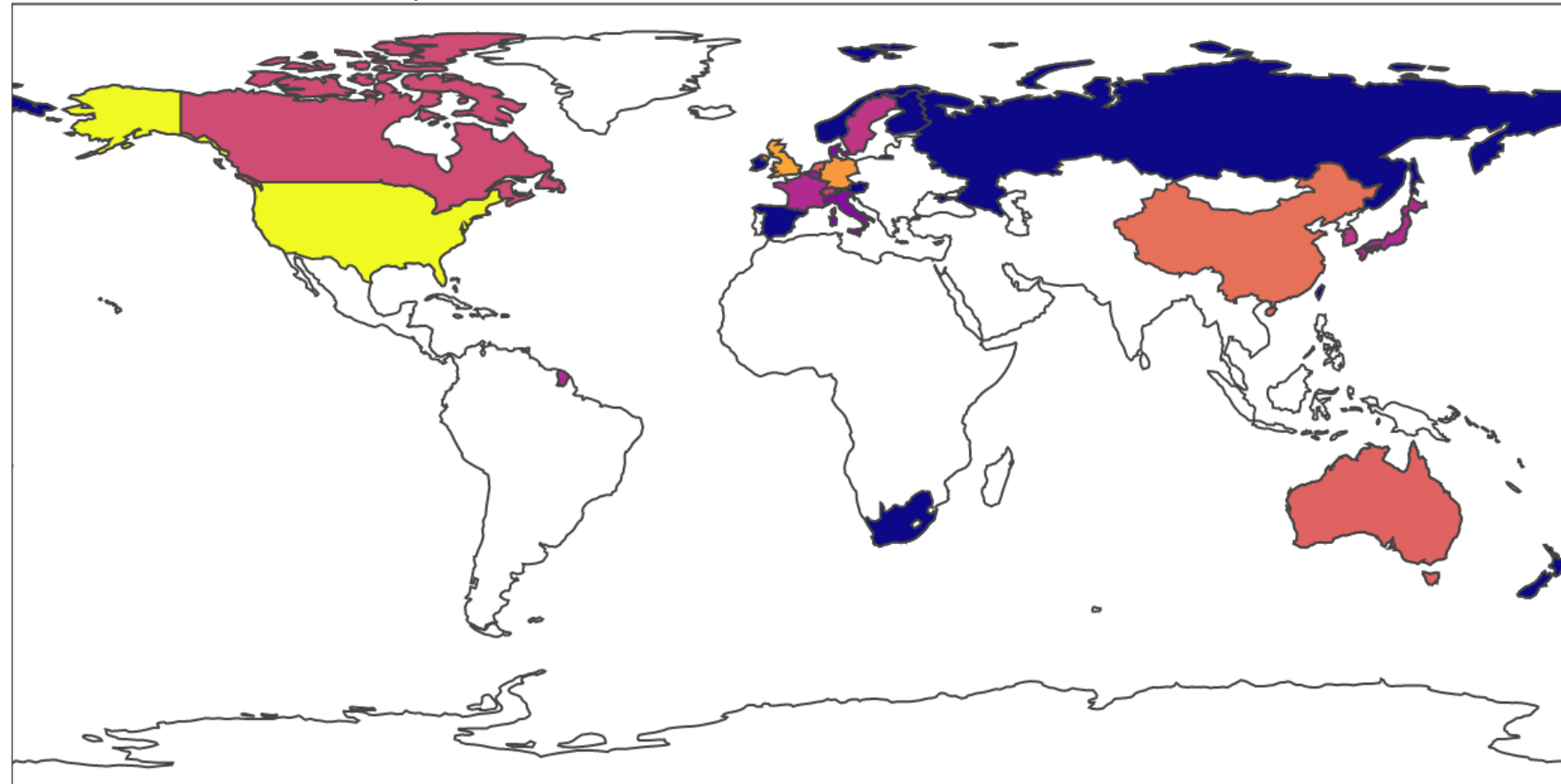
# Top 200

Number of universities in WUR top 200



# Universities per country/region in the WUR 2024 Top 200

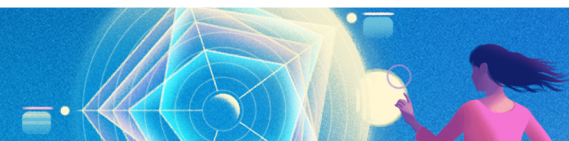
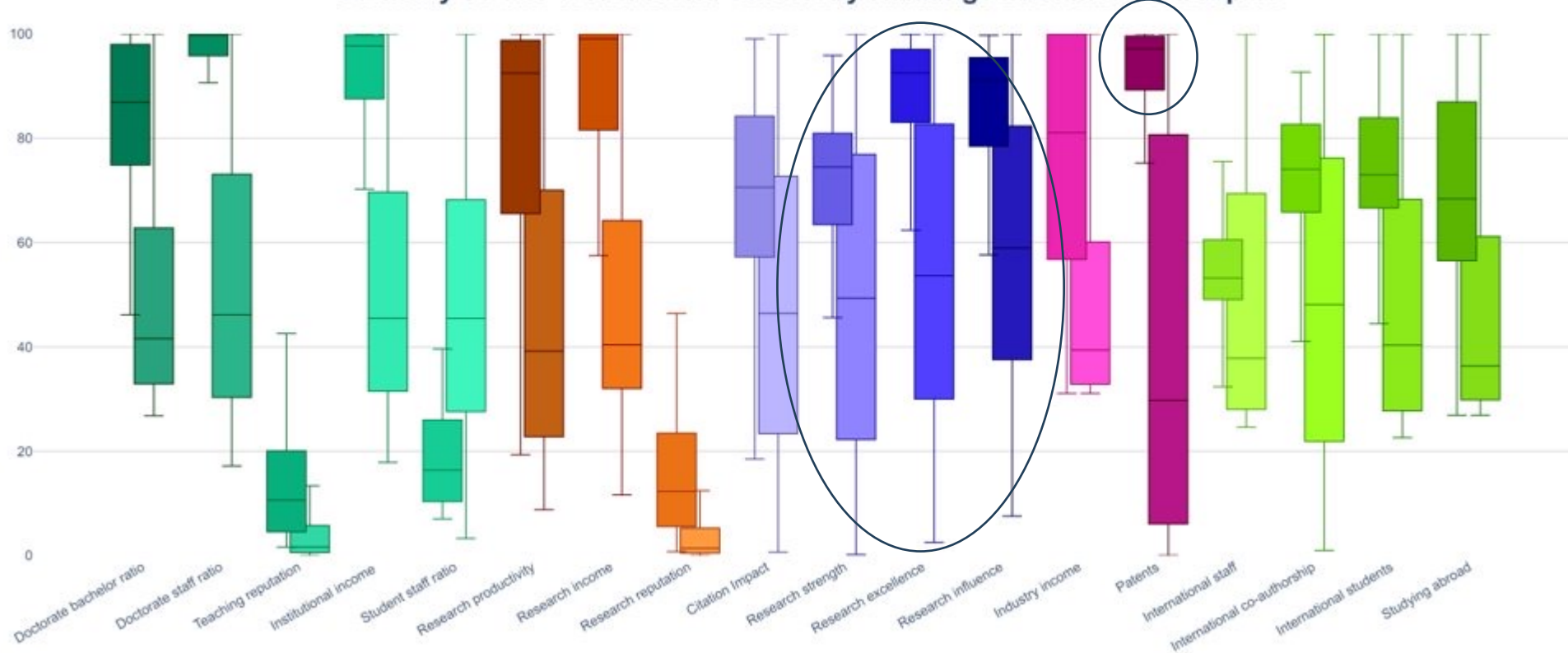
There are a total of 201 institutions in The World ranked in the World University Rankings 2024 Top 200, from 27 countries  
91 institutions from Europe were ranked



country	number unis
United States	56
United Kingdom	25
Germany	21
China	13
Australia	11
Netherlands	11
Canada	8
Switzerland	7
South Korea	6
Sweden	6
France	5
Hong Kong	5
Japan	5
Belgium	4
Denmark	3
Italy	3

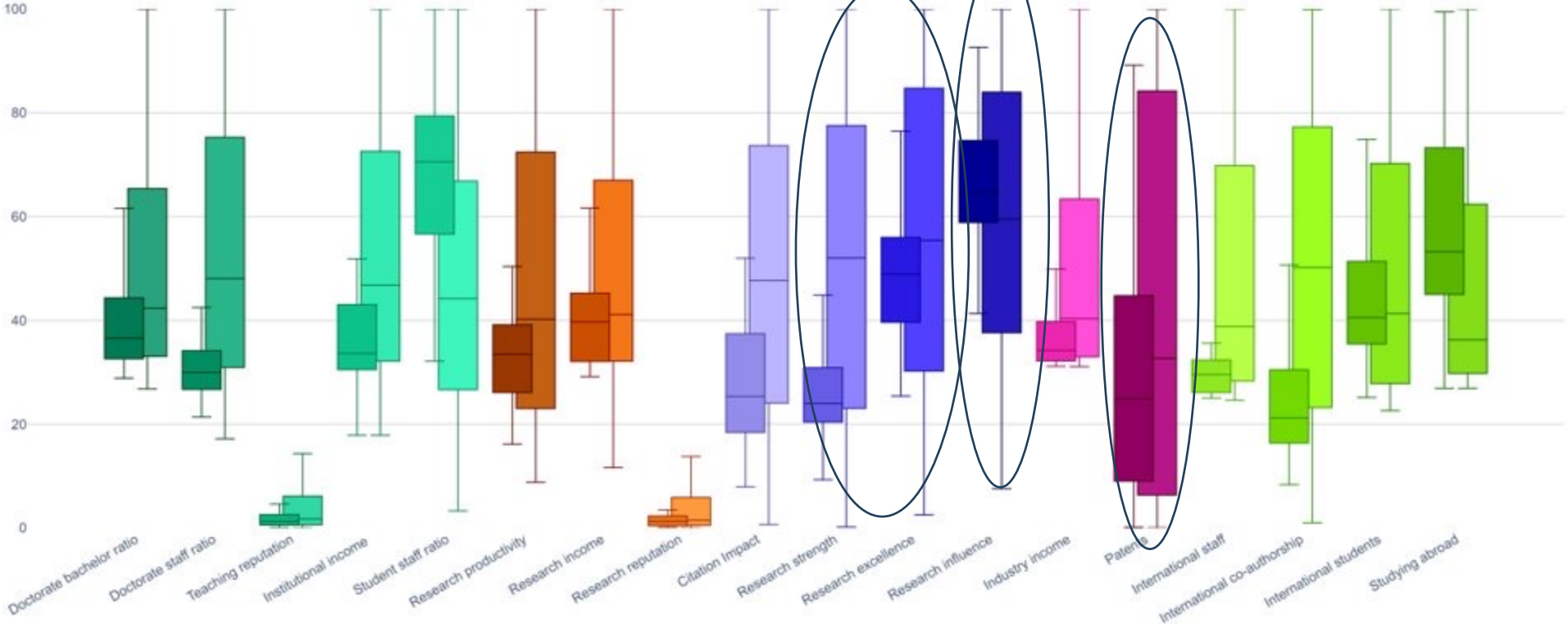
# Germany

Germany vs The World World University Rankings 2024 metrics boxplot



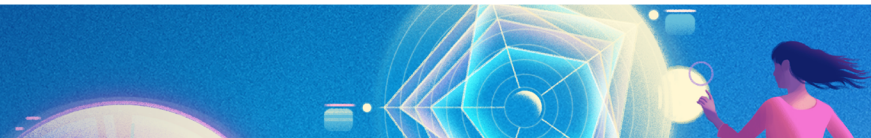
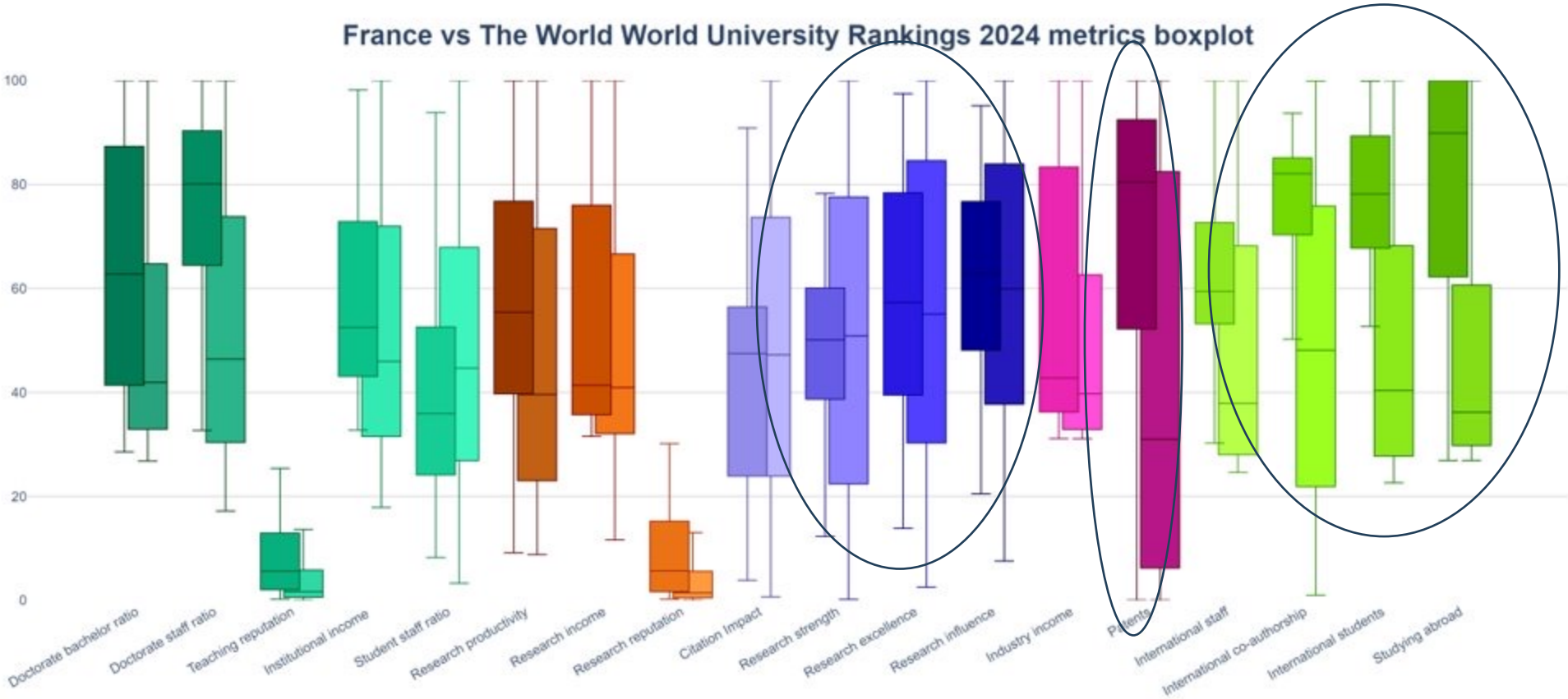
# Poland

Poland vs The World World University Rankings 2024 metrics boxplot

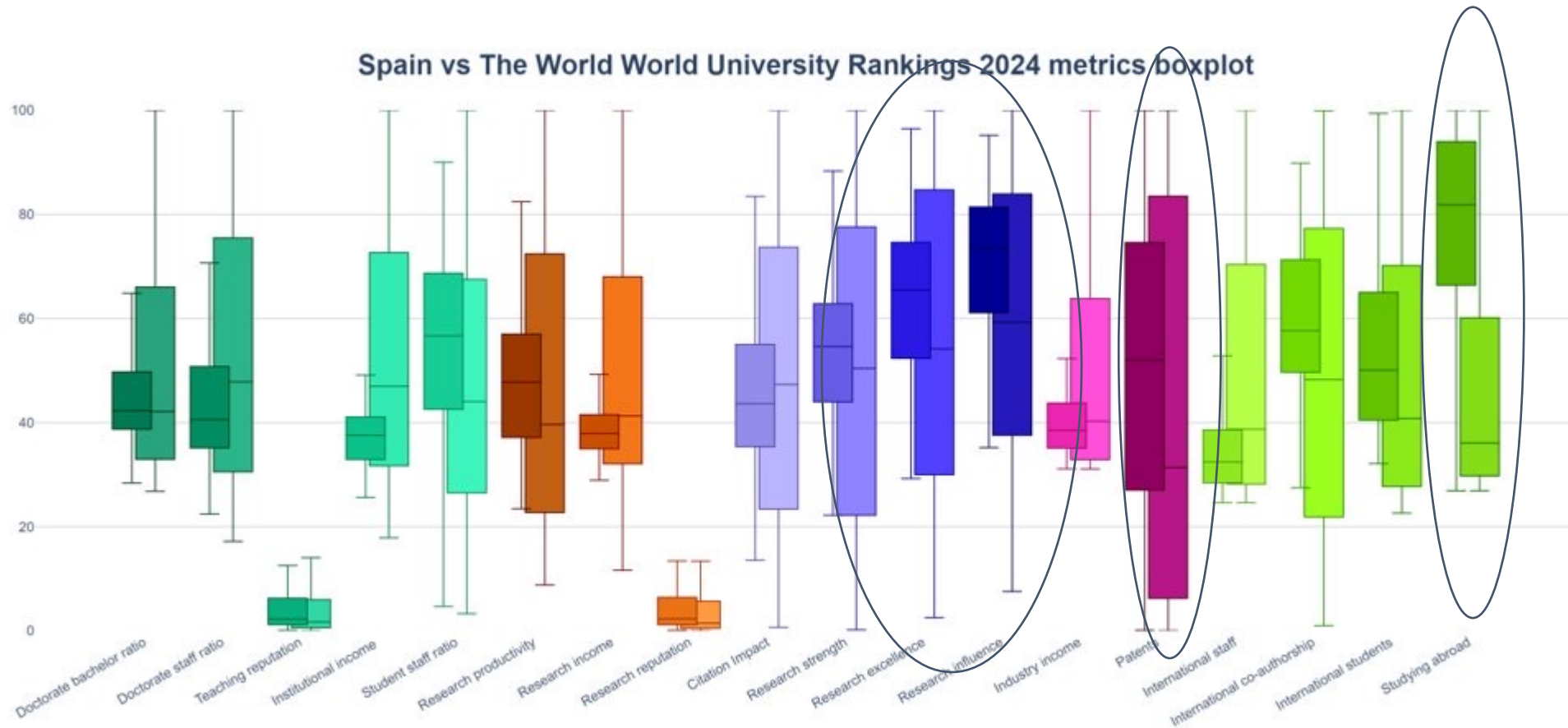




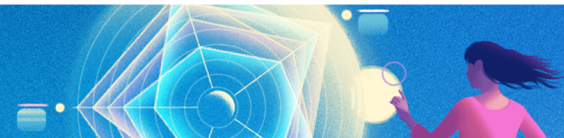
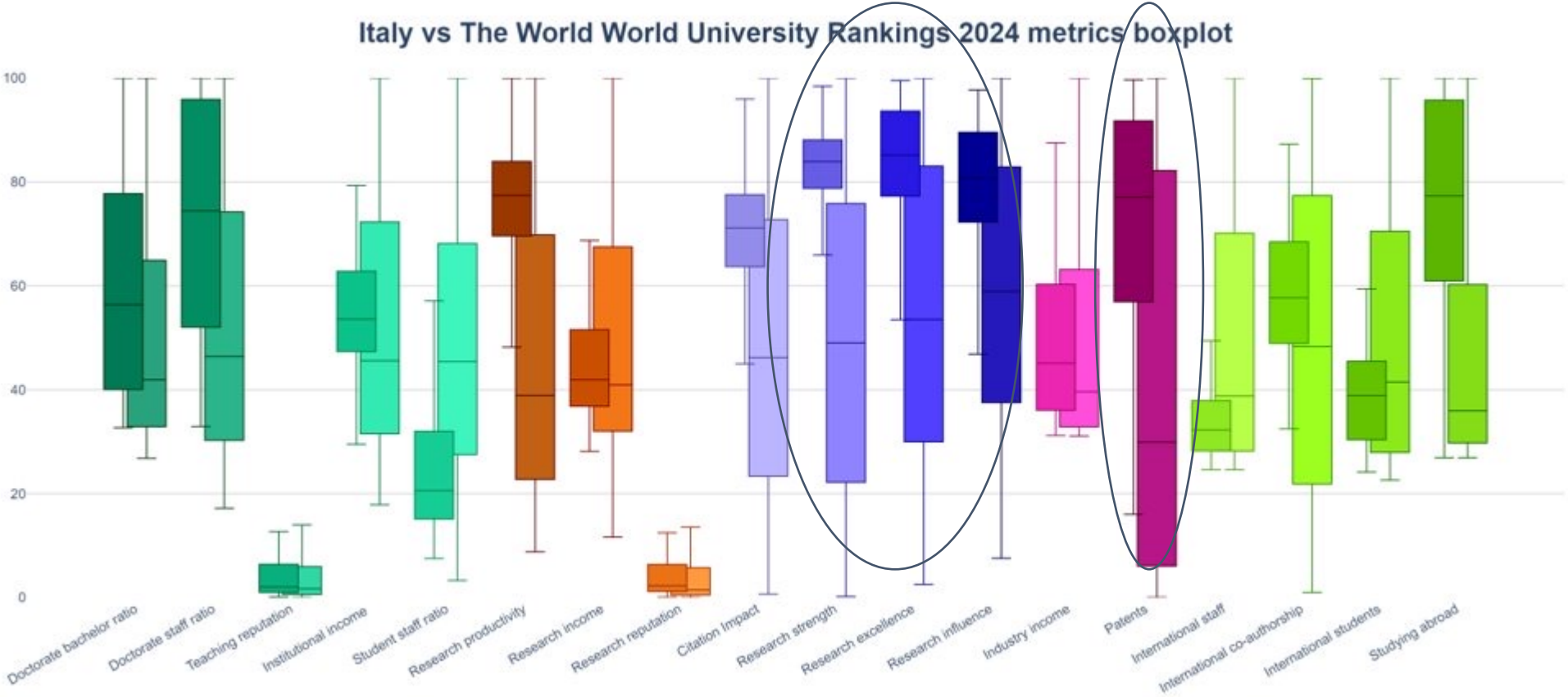
# France



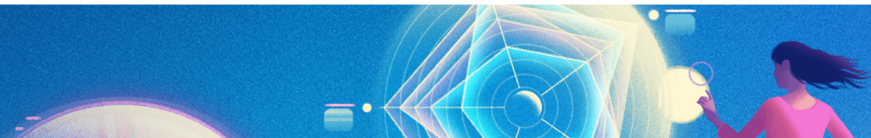
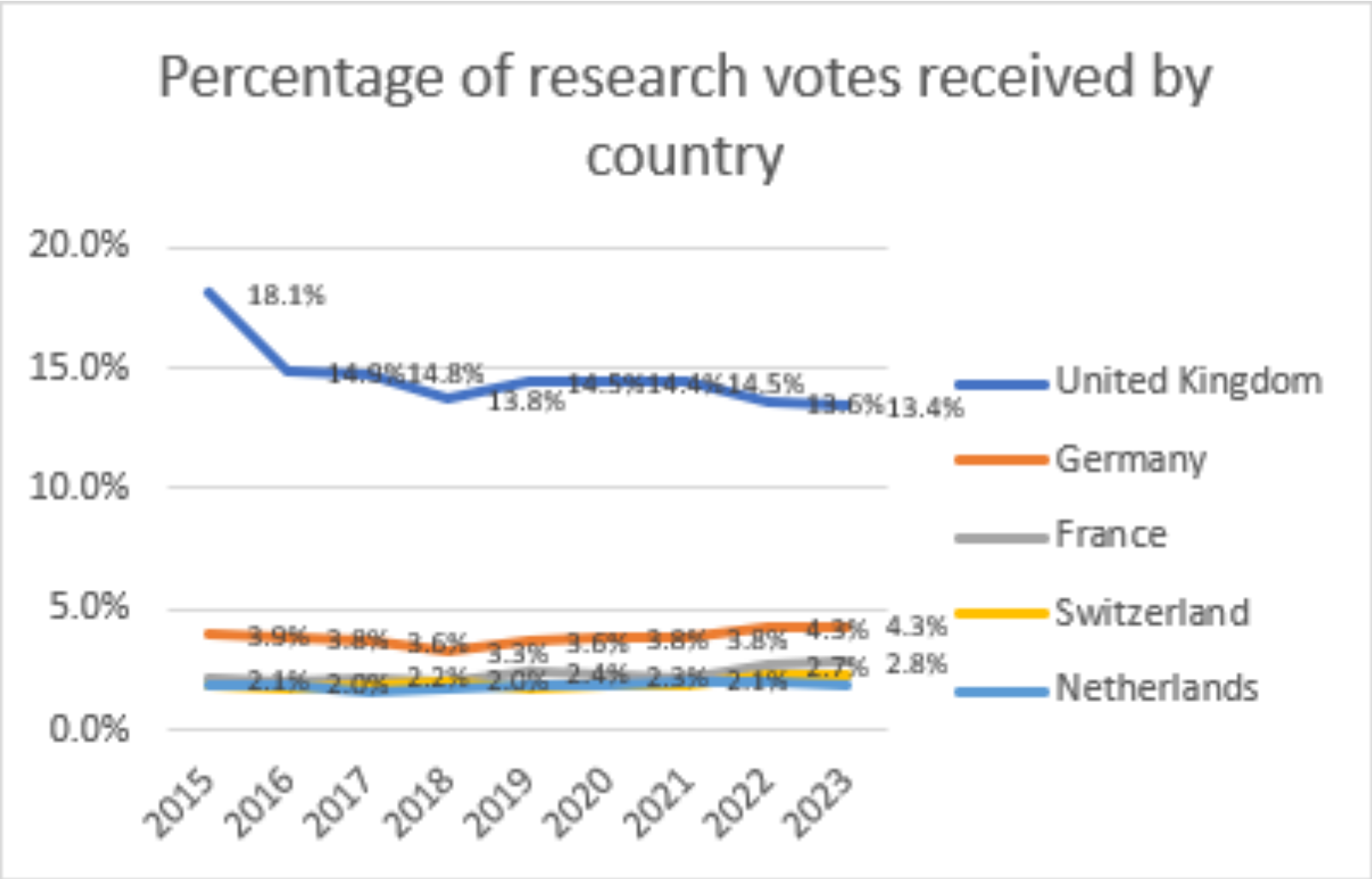
# Spain



# Italy



# Reputation voting patterns



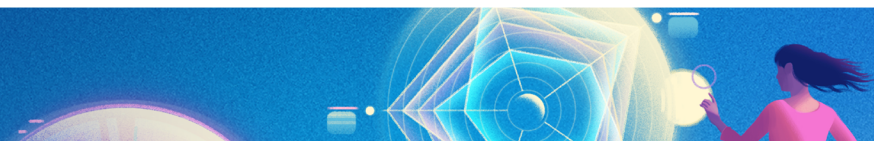
# How to participate?



# Eligibility Criteria

Participation in THE World University Rankings (or any other THE rankings) is always free of charge. However, there is a set of eligibility criteria

- Must teach at undergraduate level
- Publication requirements
  - At least 1000 publications in 5 years
  - At least 150 publications each year
  - Separate publication requirements for the subject rankings
- Must not be a subject specialist



# How to take part

We need your help for the **institutional data**

## 1. Nominate a Data Provider

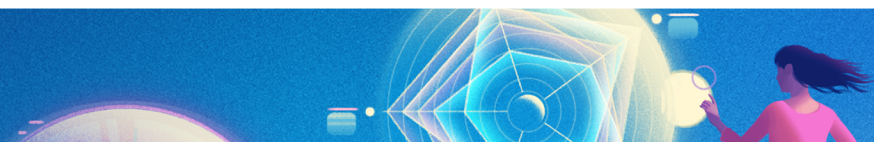
A Data Provider for your institution will need to be nominated.

Please email us at [profilerankings@timeshighereducation.com](mailto:profilerankings@timeshighereducation.com)

## 2. Connect to the Portal

Your Data Provider will receive login details to connect to the Data Collection Portal

The Portal will be open between 8 January and 30 March 2024



# Data Collection Portal



## World University Ranking 2022

Complete the stages of the data collection process

### THE- Times Higher Education World

Introduction

Institution Profile

Data

Notes

Review, print & submit

Welcome to the *Times Higher Education (THE)* World University Rankings data collection portal.

The secure portal is structured to collect accurate and detailed information to enable us to develop a detailed, multifaceted performance profile of your institution to create the *THE* World University Rankings and related specialist rankings.

Please note that this portal is directly managed by Times Higher Education and is the only source of institutional data for the THE World University Rankings. The information that you submit will be combined with other sources of data and used to create a comprehensive and representative picture of your institution and of others around the world.

**Only by submitting data via this portal can your institution be considered for inclusion in the *THE* World University Rankings and multiple related publications and products.**

Thank you for taking the time to participate in this important global research project.

Please download our quick-start guide which explains the key aspects of the data collection process and how to navigate your institution's data collection portal account. We recommend that you read the information before you begin your data submission and refer to it during completion of the data collection process.

English user guide

Arabic user guide

Mandarin user guide

German user guide

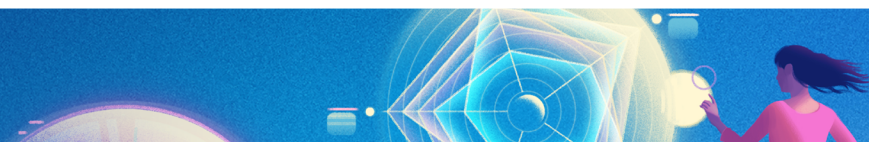
French user guide

Italian user guide

Japanese user guide

Korean user guide

Data collection materials are available for download in 12 languages





# Data Collection Portal

Once you are done with data entry, please go to this tab to submit your data

THE TIMES Higher Education World

Introduction > Institution Profile > **Data** > Notes > **Review, print & submit**

Please provide information about the teaching and research activities of your institution. The more data that you share, the more meaningful your profile will be.

Please note that all information should be entered in English. Click on each of the sections below and complete your data.

### Important notes

- Please provide data about people as full-time equivalents (FTE), with no commas or thousand separators (e.g. 18742.5).
- Please note that the income data we request at the subject level (total institutional income, research income, research income from industry and commerce) needs to be broken down by subject. Please DO NOT replicate the income data from the overall level into the subject level. Ideally, any data at the subject level should add up to the data at the overall level.
- Please provide monetary data in the currency selected and report in whole numbers (i.e. 17865456) with no punctuation. Thousands separators and decimal points are not permitted.
- If you are finding it difficult to complete the mandatory fields or in completing the form in English, please do not hesitate to contact us at [profilerankings@timeshighereducation.com](mailto:profilerankings@timeshighereducation.com)

Enter the data

All fields marked with a † are required in order to participate in the Overall Rankings. Note that this includes some subject fields. Additionally, fields marked with a \* are also required in order to be eligible for the Subject Rankings.

**Overall** - This section is mandatory for all universities to complete 61%

In this section you should submit data about your institution as a whole. This is not an automatically calculated sum of categories. You are required to enter data manually.

	2020	2019
<b>Number of academic staff (FTE) †</b>	<input type="text" value="562"/>	<input type="text" value="Data unavailable"/>
		<input type="text" value="We do not record this type of infor"/>
Number of academic staff of international/overseas origin	<input type="text" value="230"/>	<input type="text" value="Data unavailable"/>
(FTE) †		<input type="text" value="data unavailable"/>

[IPEDS subject mapping](#)

[Help](#)



# Data Collection Portal

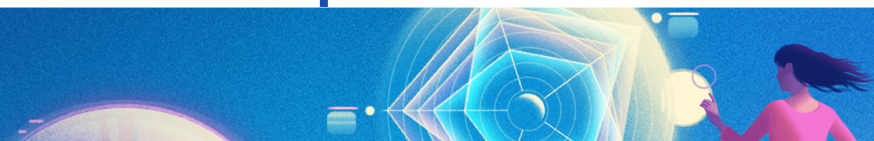
We collect **data** at the institution level and in our 11 subjects

- Staff and international staff
- Students and international students
- Undergraduate degrees awarded and doctorates awarded
- Income data

New since 2022: outbound exchange students

We will be collecting data from year ending in 2022 (year 2021-2022)

Art and Humanities  
Business and Economics  
Clinical and Health  
Computer Science  
Education  
Engineering  
Law  
Life Sciences  
Physical Sciences  
Psychology  
Social Sciences



# How can THE support you?

**Magdalena Marzec**

**Regional Manager UK & Europe**



# Data Solutions

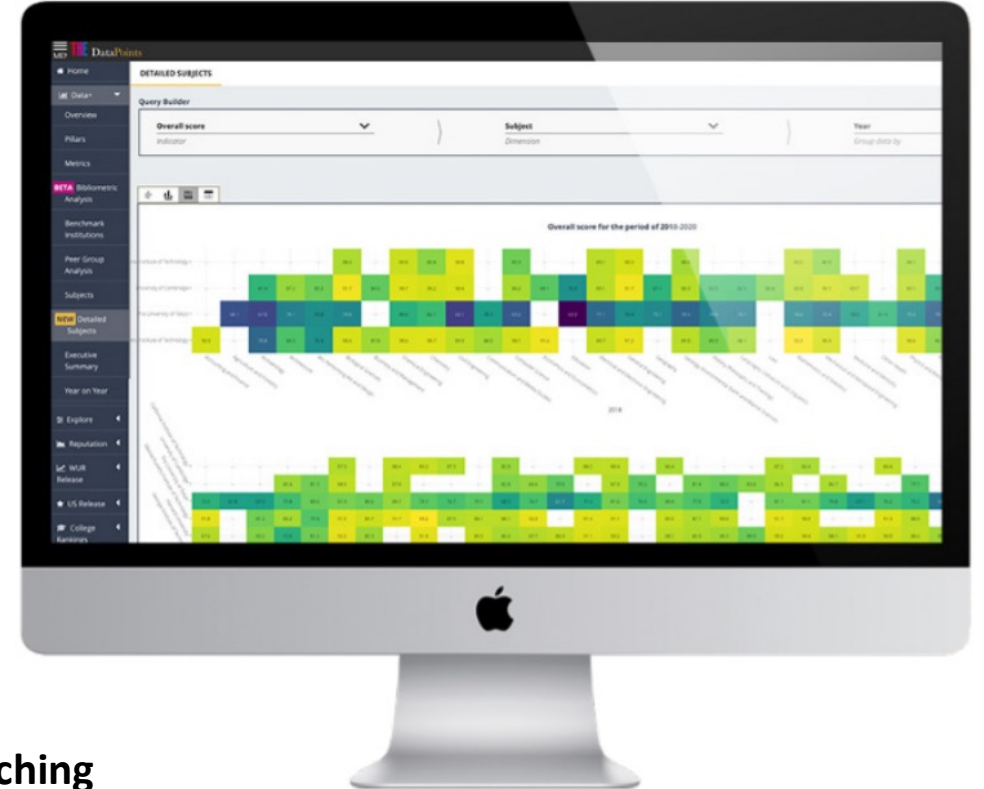


## DataPoints

Helping leaders in Higher Education make better, more informed decisions via data, performance analysis and benchmarking

THE's datasets include:

**Research | Sustainability | Internationalisation | Reputation | Impact | Teaching**

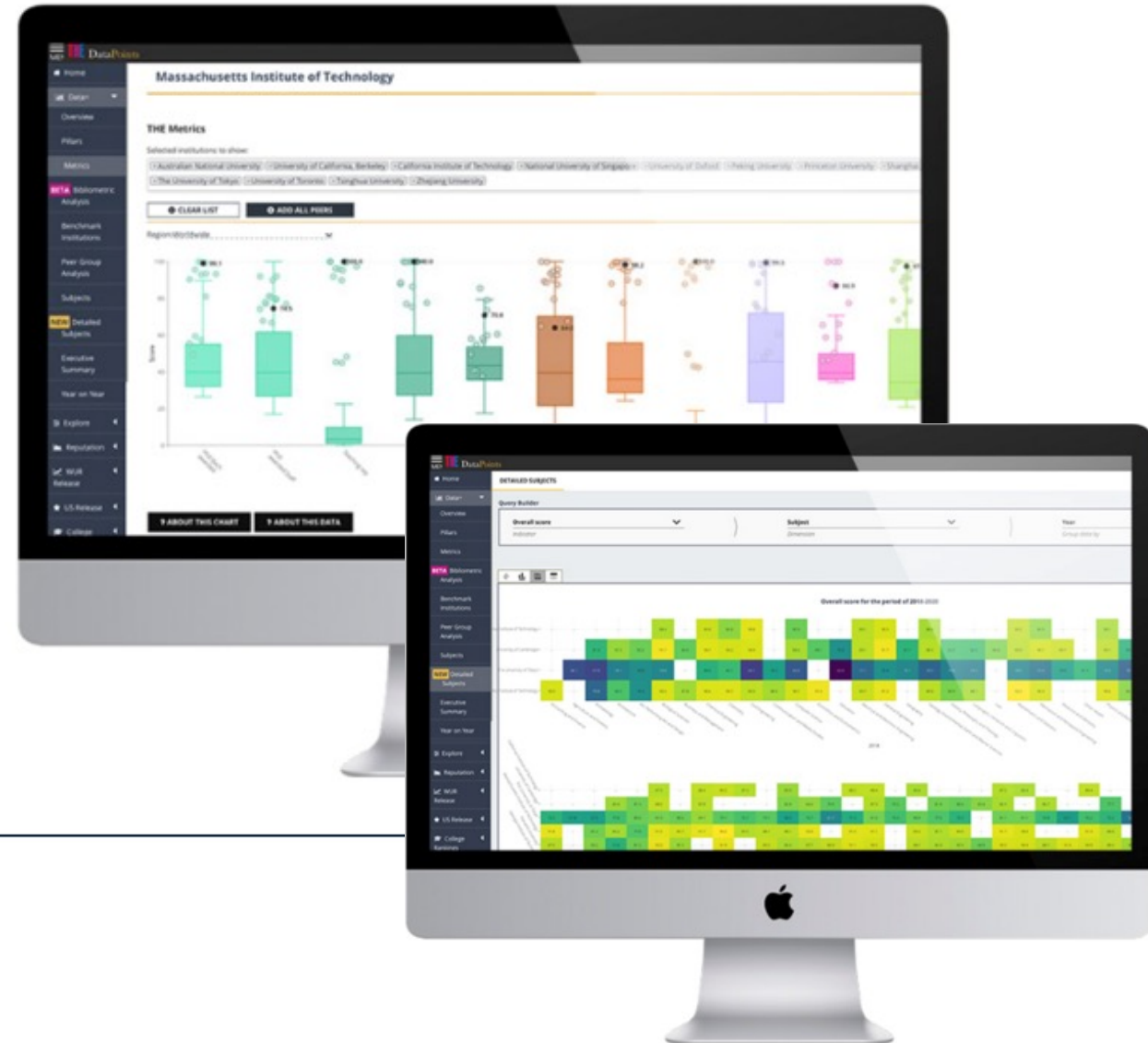


# DataPoints: World University Rankings

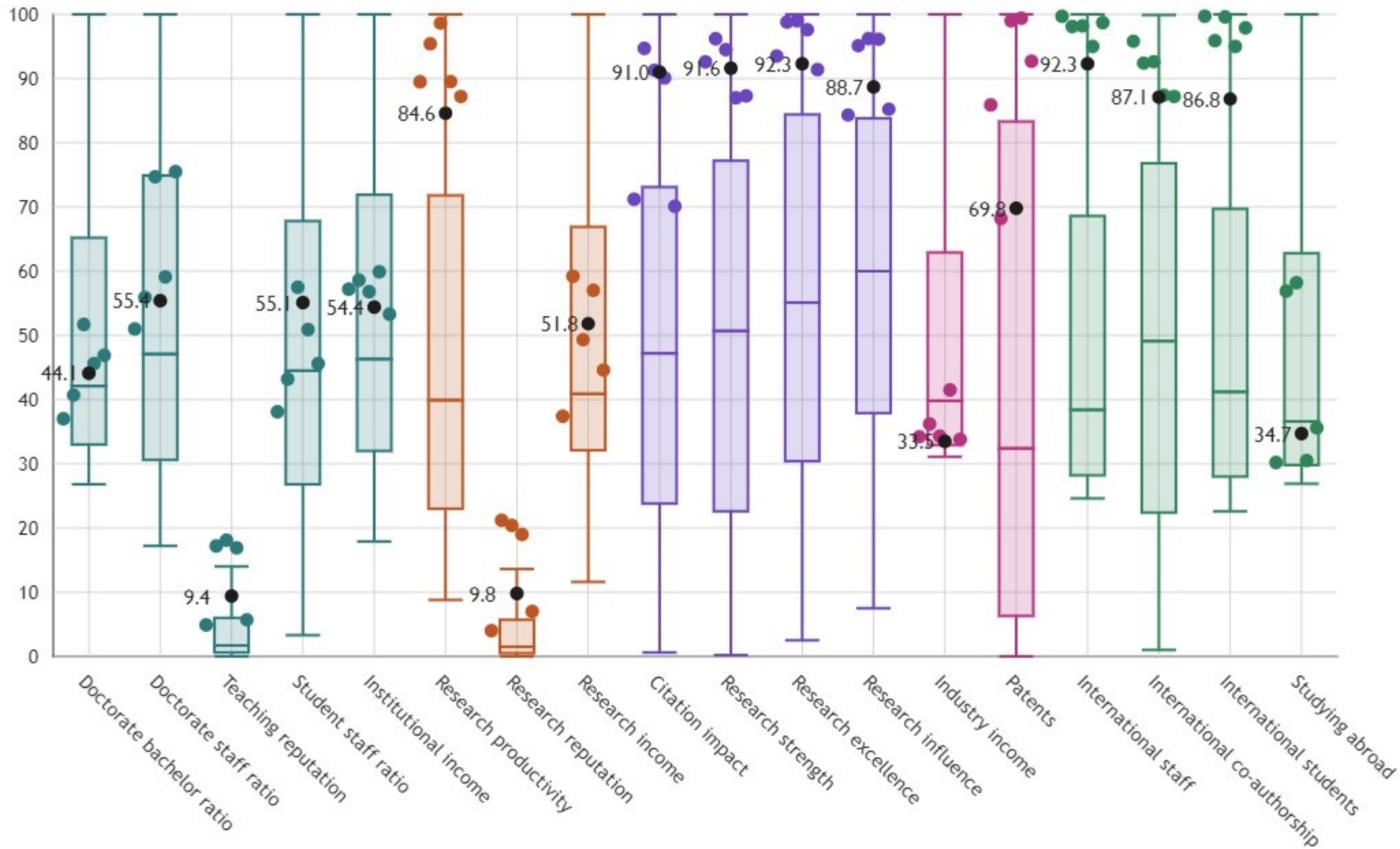
Empowering research-focussed universities to advance their strategic goals.

Product features:

- Benchmarking against 2,500+ universities from over 100 countries around the world
- Data across all 18 metrics and 31 subject areas
- Year-on-year analysis and trends
- Peer Group Analysis
- Explore module: simulate performance
- Data download and early access to results



Metric Scores For 2024 By Region (Worldwide)

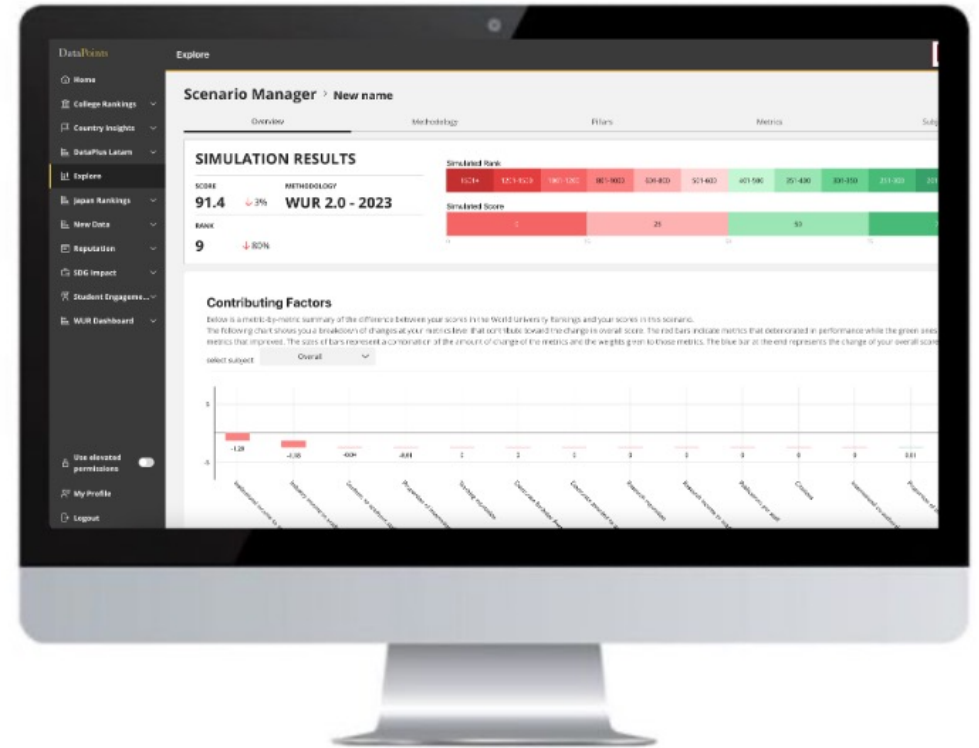


# DataPoints: Explore

Create hypothetical scenarios by changing your institutions core inputs and running them against the most recent World University Ranking.

Create scenarios, with the option to change data inputs across:

- Your entire institution as well as across THE's 11 subject areas
- Institutional data, including staff and student numbers, degrees and income
- Reputation votes, both teaching and research
- Research output and FWCI
- There's no limit to how many scenarios you can create
- Ability to download scenarios and visuals



# DataPoints: Reputation

Understand the strength of your university's brand and reputation, globally.

Product features:

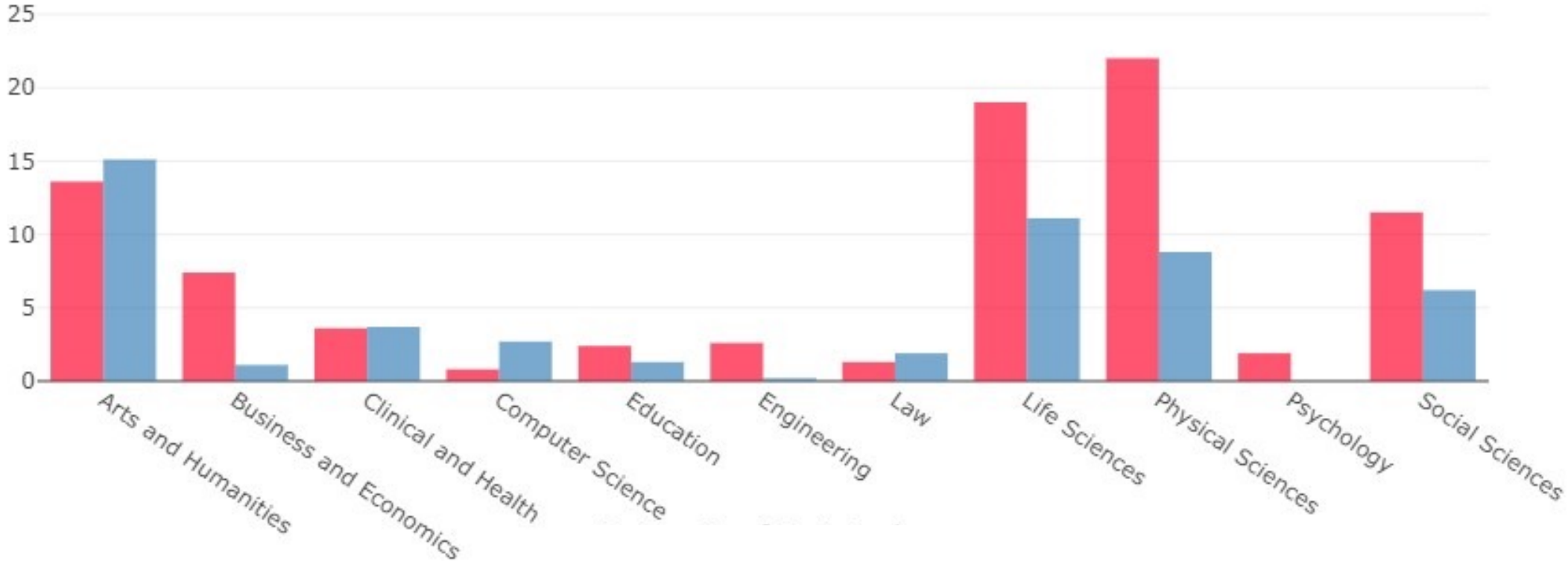
- Over 100,000 survey responses, 1 million votes cast and votes for over 2,500 institutions
- Based on the largest invitation-only survey examining academic reputation over 31 subject areas
- National vs. international analysis
- Understand how your institution and faculties are perceived by researchers around the world
- SWOT assessment and data download





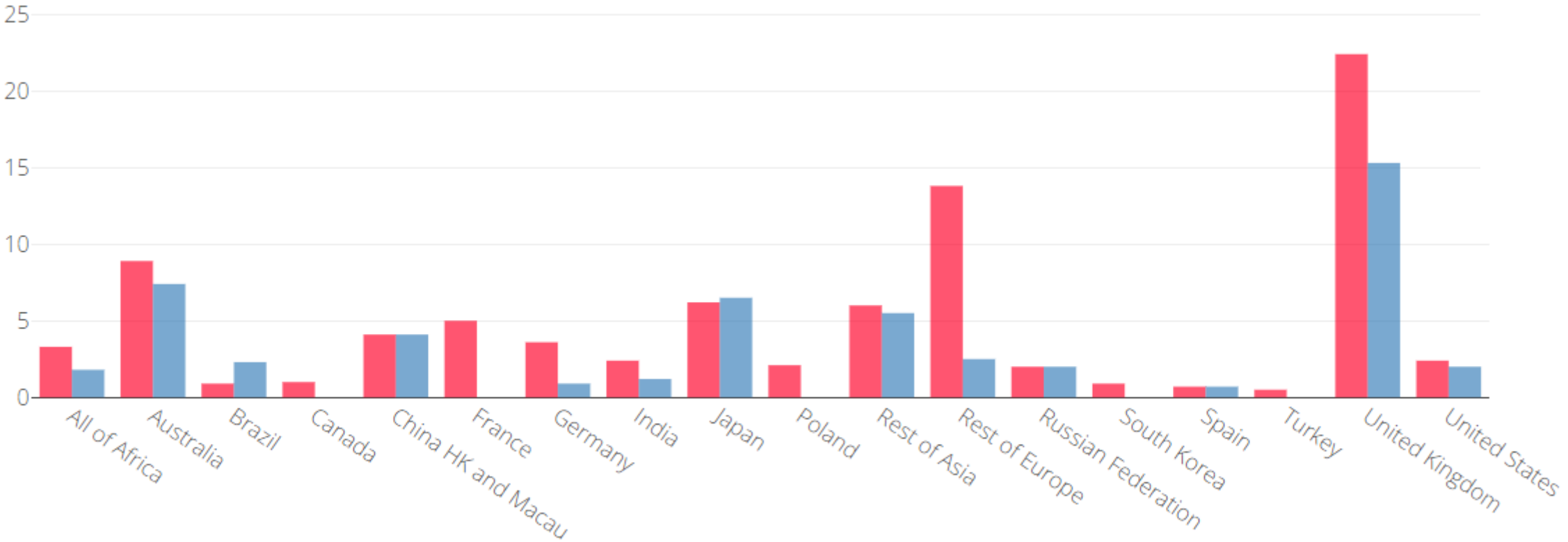
# DataPoints: Reputation

■ Research reputation (weighted)  
■ Teaching reputation (weighted)



# DataPoints: Reputation

■ Research reputation (weighted)  
■ Teaching reputation (weighted)



# Consultancy Services



## Consultancy

Empowering universities, governments and organisations around the world.

### Rankings & Performance Analysis

In-depth analysis of institutional and subject level performance in THE's suite of global rankings. We also provide institutional level simulation of rankings performance for unranked institutions, with detailed analysis of strengths,...

[Discover more](#)

### Internationalisation & Transnational Education (TNE)

Offering a bespoke Transnational Education (TNE) consultancy service powered by our world-leading higher education data and global network of universities.

[Discover more](#)

### Portfolio & Course Analysis

Benchmarking portfolios across faculties and institutions using qualitative & quantitative methods

[Discover more](#)

### Reputation & Brand

THE's Reputation and Brand consultancy services are built on our unparalleled experience supporting universities around the world to analyse, audit and track their global reputation and impact of their brand

[Discover more](#)

### Research Strategy

THE Consultancy can support universities and ministries of education enhance their academic research strategies, using THE's bibliometric data and unique artificial intelligence tools

[Discover more](#)

### Industry Insights

Our team work closely with industry and commercial organisations to provide insights and tailored thought leadership on a topical basis to support with market awareness, sector engagement, reputation and to help in forging strategic...

[Discover more](#)

# Q&A



# Participate in the Impact Rankings

Scan today:



Times Higher Education  
**Impact Rankings**

