



Undergraduate **Prospectus 2024**

From Warwick. **Anywhere.**

Open Days

2023

We're looking forward to welcoming visitors onto campus for our Undergraduate Open Days

Sat 17 June
Sat 24 June
Sat 7 October
Sat 21 October

We hold a range of virtual and face-to-face events throughout the year. These include Talk and Tours, as well as events hosted by academic departments. You can also take a self-guided tour of campus, or explore our interactive virtual campus tour in your own time.

Find out more



CONNECT WITH US

@uniofwarwick



VISIT OUR WEBSITE

warwick.ac.uk/ug

HEAR FROM OUR STUDENTS

our.warwick.ac.uk
warwick.ac.uk/study/unibuddy

CHAT TO US

We hold regular live chat sessions on a variety of topics, which enable you to talk directly to a member of staff.

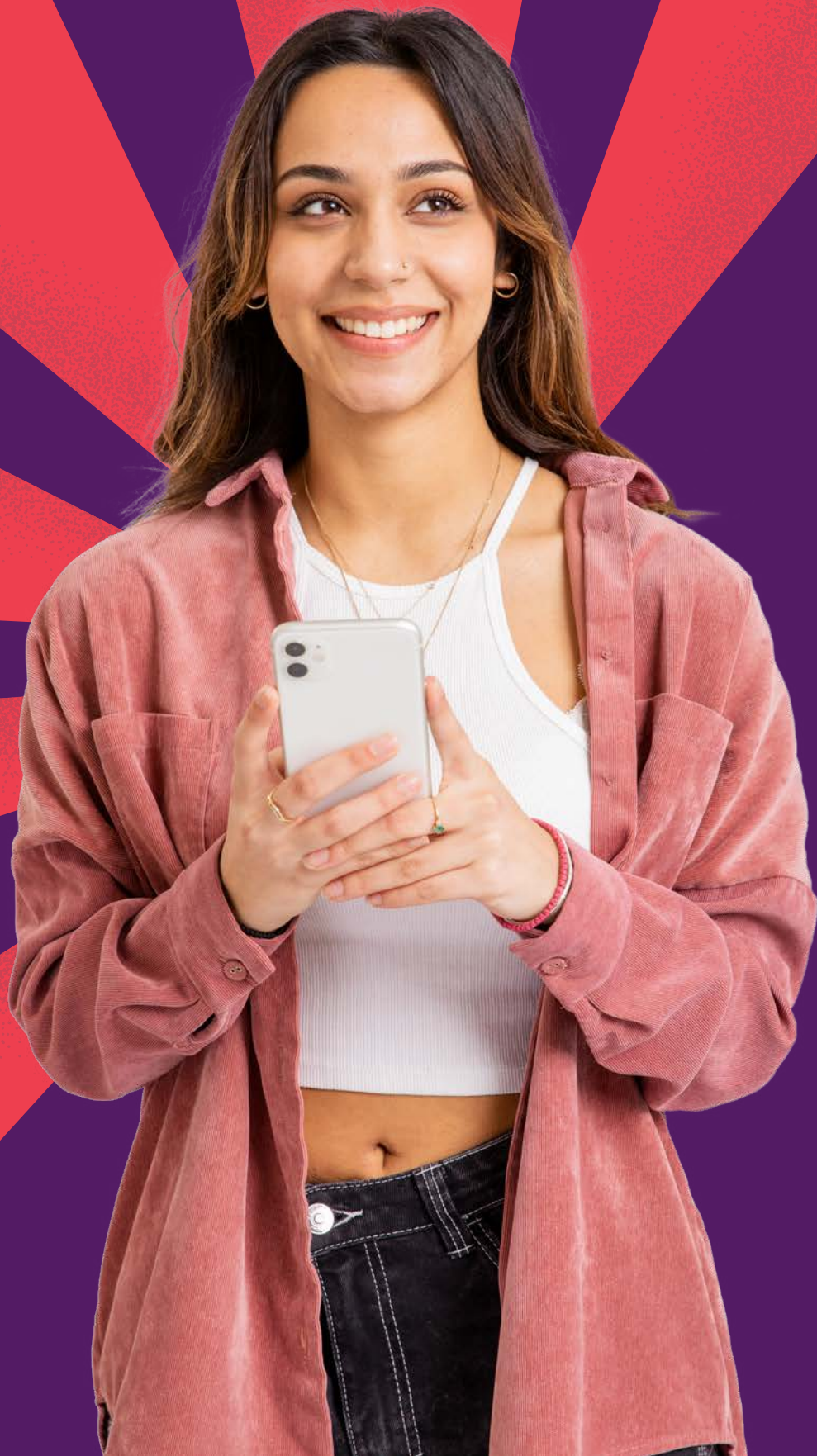
For details of upcoming events, visit warwick.ac.uk/study/livechat

Contents



Why Warwick?	02	Undergraduate courses	18
Study with us	04	Accounting and Finance	18
Teaching and research	05	Biology	18
Employability and careers	05	Business and Management	19
Our campus	06	Chemistry	19
Campus map	08	Classics and Ancient History	20
Our community	10	Computer Science	20
Living at Warwick	12	Cyber Security	20
Accommodation	12	Economics	20
Wellbeing and advice	12	Education	21
Local area	13	Engineering	21
Applying, funding and finance	15	English	22
Fees and funding	15	Film and Television Studies	22
Applying to Warwick	15	Global Sustainable Development	22
Warwick Foundation Studies	16	Health Sciences	23
Returning to study	17	History	23
Degree Apprenticeships	17	History of Art	23
		Integrated Natural Sciences	23
		Law	23
		Liberal Arts	24
		Linguistics	24
		Mathematics, Statistics, Data Science, and MORSE	24
		Media and Creative Industries	25
		Modern Languages	25
		Philosophy	26
		Physics	27
		Politics and International Studies	27
		Psychology	28
		Sociology	28
		Theatre and Performance	28
		Essential information	28





Why Warwick?

6th
most targeted university
by the largest number
of top employers
(The Graduate Market in 2022,
High Fliers Research Ltd)

64th
in the world
(QS World University Rankings 2023)

9th
in the UK
(The Times and Sunday Times
Good University Guide 2023)

10th
in the UK for our
'Graduate Prospects'
score
(The Times and Sunday Times Good
University Guide 2023)

92 %
of our research is
'world leading'
or **'internationally
excellent'**
(Research Excellence Framework (REF),
2022, the most recent UK-wide assessment)

8th
in the UK
(The Guardian University Guide 2023)

Coventry named
5th best student
city in the UK
(QS Best Student Cities 2022)

3rd
in the Russell Group for
'Overall Satisfaction'
(The National Student Survey (NSS) 2022)

Study with us

Let some of the world’s best minds guide your discoveries.

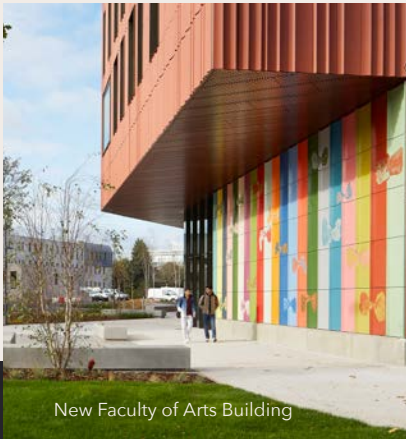
Challenging, inspiring and relevant teaching will help you to develop academic curiosity, and encourage agile thinking. These are skills you’ll carry into a successful career beyond Warwick.



Find out more about study at Warwick



The Times and Sunday Times
University of the Year for Teaching Quality 2022



New Faculty of Arts Building



Explore careers support and opportunities



Meet our inspiring teachers

Teaching and research

- ▲ Study modules from outside your department
- ▲ Personal tutor for academic support and guidance
- ▲ Learn a language
- ▲ Carry out your own research
- ▲ Study abroad opportunities and international partnerships
- ▲ World-class academics
- ▲ Flexible learning facilities

Employability and careers

- ▲ Virtual and in-person careers and skills support
- ▲ Job interview preparation and application advice
- ▲ Part-time work available on campus
- ▲ Support finding work placements and internships
- ▲ Start an enterprise



Our campus

Welcome to our safe, energising and ever-evolving campus. Enjoy all of our amazing facilities, right on your doorstep.

Relax

- + Nightclub and bars
- + Live music and theatre
- + Cinemas
- + Outdoor events

Explore

- + Warwick Arts Centre
- + Sports and Wellness Hub
- + Beautiful green spaces
- + Campus sculpture trail
- + Esports Centre

Eat and drink

- + Cafés and sandwich bar
- + Food market
- + Restaurants
- + Convenience store

Organise

- + NHS Health Centre
- + Banks
- + Launderette
- + Pharmacy
- + Post office
- + Travel agent

Worship and reflect

- + Chaplaincy with chaplains from Christian, Jewish and Muslim faiths
- + Regular services, meals and celebrations
- + Islamic prayer hall
- + Listening service
- + Faith societies

Take a virtual campus tour



Fully refurbished Arts Centre, featuring theatre spaces, concert hall, cinemas, gallery and restaurant

£49m invested in sport and wellness, including our incredible Sports and Wellness Hub

Find out more about campus life



300+ student-run clubs and societies



©Imogen Forte

©Imogen Forte

Campus map



KEY	
	Students' Union
	Library
	Warwick Arts Centre
	Health Centre
	Café / Restaurant
	Sports and Wellness Hub
	Oculus Learning Hub
	Bus Interchange
	Interdisciplinary Biomedical Research Building
	Faculty of Arts Building

HALLS OF RESIDENCE	
1	Arthur Vick
2	Bluebell
3	Claycroft
4	Cryfield Village
5	Heronbank
6	Jack Martin
7	Lakeside
8	Rootes
9	Sherbourne
10	Tocil
11	Westwood
12	Whitefields

Our community

Join our close-knit community of staff and students from all over the world. Our campus provides the perfect environment to forge connections and express your individuality.

Share a campus

- ▲ Live and learn alongside students and staff from around 150 countries
- ▲ Meet new friends and share experiences
- ▲ Come together to celebrate cultural festivals and holidays

Share spaces online

- ▲ Global Connections Community – a digital hub for students of all nationalities to share ideas, create and attend events, chat, and socialise
- ▲ UniBuddy – chat in real-time with our student ambassadors, representing different courses and countries, about their studies and wider experience



Chat to students on Unibuddy



Share your time

- ▲ Build connections with our local community through volunteering, or outreach work with your department
- ▲ Become a student ambassador and share your experiences with prospective students

Share your voice

- ▲ Warwick Students' Union (SU) – run by students, for students, the SU is central to life on campus, providing representation, support and social activities
- ▲ National Student Survey (NSS) – each year, we use feedback from final year students to improve the student experience for everyone



Living at Warwick



At Warwick, we make living easy so that you can enjoy everything student life has to offer, on campus and beyond.

Accommodation

- A wide variety of self-catered halls of residence. No matter where you live, our campus facilities will only be a short distance away
- Enjoy the freedom of independent living, but with the reassurance of our support should you need it
- Approximately 7,500 rooms on campus for different budgets and requirements, with shared bathroom and en-suite room options
- We guarantee accommodation for all new full-time first year undergraduates, provided that you've accepted an offer from Warwick as your 'Firm' (first) choice*
- Book campus with confidence. There is no deposit or guarantor required and fees are inclusive of utility bills

* Please see our allocation principles for further information. You must meet the criteria and apply for accommodation by the deadline noted. Please note, the guarantee does not apply to candidates for either the MBChB (a graduate-entry course) or Degree Apprenticeship courses.

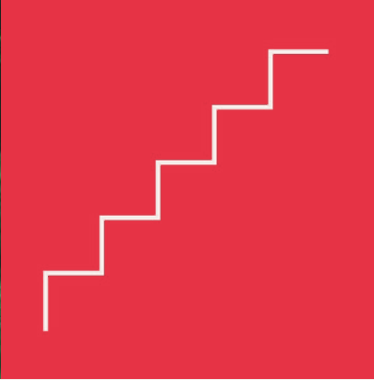
Wellbeing and advice

- Wellbeing and Student Support (WSS) provide a range of services to help you develop the personal resources and skills to navigate the challenges and opportunities of student life
- Brief consultations with our Wellbeing and Student Support Team are the quickest way to access our service, to help you identify your needs and explore the best options for you
- Access our Wellbeing Masterclasses, Steps to Wellbeing Programme and self help resources for strategies and tips to assist and improve your own wellbeing while studying at Warwick and beyond
- The Residential Community Team provide 24/7 support and guidance for those living on campus, and our Community Safety Team protect the safety and security of everyone who lives, works and studies at Warwick, 365 days a year

Explore accommodation



Learn more about wellbeing



Kenilworth Castle

Local area

- Coventry-based campus extends into Warwickshire
- Nearby Warwickshire towns include Leamington Spa and Kenilworth
- Easy access to shopping, nightlife, sporting events, music, arts and culture nearby
- Regular bus services from campus and direct cycleway to Kenilworth



Time taken to drive between locations by car



Applying, funding and finance



Nearby Stratford-upon-Avon

is Shakespeare's birthplace and home to the world-acclaimed Royal Shakespeare Company (RSC)

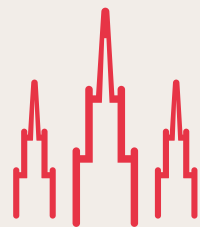


The Herbert Art Gallery and Museum, Coventry



Direct trains

run to London 1h 05m
and Birmingham 25m



Coventry named

**5th best student
city in the UK**

(QS Best Student Cities 2022)



Birmingham Bullring and
Grand Central shopping centre



Disney's *The Lion King*, at Birmingham Hippodrome.
Rafiki Gazelle. Photo by Brinkoff and Mogenburg

Fees and funding

For 2023* entry, our fees were as follows:

- ▲ Home: £9,250
- ▲ Overseas (including EU):
 - Band 1** - £23,390 per year (classroom-based courses, including Humanities and most Social Science courses);
 - Band 2** - £29,830 per year (laboratory-based courses, plus Theatre and Performance Studies, Economics, and courses provided by Warwick Business School, with exceptions).

There may be extra costs related to your course for things such as stationery, books, materials and field trips.

*Please note, in the future, these fees may change for new and continuing students. This includes students applying for 2024 entry.

You can find advice and information about funding your study online, including:

- ▲ Living costs
- ▲ UK and EU Student Loans
- ▲ Scholarships and bursaries



**Fees and funding
information**

Applying to Warwick

Everything you need to know about applying to Warwick is on our web pages. There's up-to-date information about:

- ▲ How to apply
- ▲ Key dates and deadlines
- ▲ Writing your personal statement
- ▲ How we process your application

We're looking forward to receiving your application.

Other types of qualifications

We welcome applications from candidates taking different qualifications, such as:

- ▲ Scottish Advanced Higher
- ▲ Welsh Baccalaureate
- ▲ Cambridge Pre-U
- ▲ Access to HE Diploma
- ▲ BTEC

This also includes a wide range of overseas qualifications.

You'll find a full list of accepted qualifications under the 'Entry requirements' tab for each course at warwick.ac.uk/ug/courses

Contextual offers

We welcome applications from candidates who meet the contextual eligibility criteria and whose predicted grades are close to, or slightly below, the contextual offer level. Find out more in the 'Useful links' section of our Applying web page.



**How
to apply**

Warwick Foundation Studies



International Foundation Programme

- + A one-year programme for international students, designed to bridge the gap between high school and undergraduate study
- + Develop your academic knowledge, skills and English language ability
- + Live and learn on our campus, with access to our world-class facilities
- + Make friends and immerse yourself in student life
- + All our students are guaranteed to receive a conditional offer for a related undergraduate programme

Warwick Pre-University Summer School

- + Our ten-night Pre-University Summer School for 15-17 year olds offers a taste of undergraduate study in Economics and Finance, Social Sciences or STEM-related subjects
- + Engage and make friends with like-minded peers from around the world
- + Gain an insight into life as a Warwick student with this on-campus residential



Learn more
about Warwick
Foundation Studies

Courses

- ▲ Arts and Humanities
- ▲ Biological Sciences and Psychology
- ▲ Business Management
- ▲ Computer Science
- ▲ Economics
- ▲ Finance
- ▲ Law
- ▲ Mathematics and Statistics
- ▲ Physics and Engineering
- ▲ Social Sciences

Returning to study

If you're looking to return to study, our Centre for Lifelong Learning (CLL) provides a range of flexible degree courses, many of which do not require formal qualifications. We consider the experience and knowledge you have gained through both your work and your life as a key part of our entry requirements.

Three main routes

BA (Hons) Counselling and the Psychotherapeutic Relationship

- + Study one day a week for four years to become a qualified Counsellor
- + Gain experience across a range of client needs and industries through placements

Part-time

- + Flexible part-time programmes; study at your own pace (between four and ten years) in a supportive environment
- + We welcome your application whatever your background and experience

Foundation and BA (Hons) degree in Early Childhood

- + Four-year part-time degree, where you will be supported in developing your academic skills, confidence and knowledge of the early years sector
- + Study one evening per week and six Saturdays across the year alongside work or family commitments

CENTRE FOR LIFELONG LEARNING (CLL)	Award	Full-Time	Part-Time
Classics	BA		✓
Early Childhood Studies	Foundation/BA		✓
English and Cultural Studies	BA		✓
French Studies	BA		✓
Health and Social Policy	BA		✓
Health and Social Policy (2+2)	BA	✓	
History	BA		✓
Social Studies	BA		✓
Social Studies (2+2)	BA	✓	

Degree Apprenticeships

A Degree Apprenticeship lets you study for an undergraduate degree whilst working full time as an employee of your chosen company, without the tuition fees of a traditional degree. All our courses have been carefully developed with industry and professional bodies to meet current and future skills needs.

A minimum of 20% of your working time will be dedicated to completing your studies through both face-to-face and distance learning.

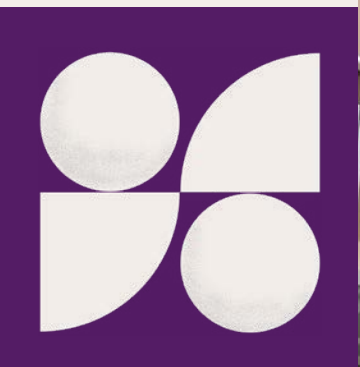
- ▲ Earn a salary while you learn
- ▲ Gain valuable work experience
- ▲ Develop skills and knowledge
- ▲ No tuition fees
- ▲ Build your professional network

DEGREE APPRENTICESHIPS (LEVEL 6)	Award	Full-Time	Part-Time*
Applied Professional Engineering	BEng	4	✓
Civil and Infrastructure Engineering	BEng	5	✓
Computer Science and Technology Solutions (Data Analyst/Software Engineer)	BSc	4	✓
Digital Technology Solutions (Data Analytics/Network Engineering/Software Engineering)	BSc	4	✓
Electro-Mechanical Engineering	BEng	5	✓
Social Work	BA	3	✓

* Part-time options are offered in either weekly block delivery or one day per week. Options vary depending on your chosen course and year of entry, please see the website for latest information.

How to apply

Find Degree Apprenticeship vacancies and information about how to apply directly through the offering employer(s).





Undergraduate courses

Subject area	Award	UCAS code	Duration (years)	Typical offers*		Subject requirements ✓ -	English Language band
				A level	IB		
ACCOUNTING AND FINANCE							
Accounting and Finance	BSc	NN34	3	A*AA	38	✓	C
Accounting and Finance with Placement Year	BSc	N40Y	4	A*AA	38	✓	C
Accounting and Finance, (with Foundation Year)	BSc	N4N4	4	^	^	✓	C
Accounting and Finance, (with Foundation Year) with Placement Year	BSc	N40J	5	^	^	✓	C
BIOLOGY							
Biochemistry	BSc	C700	3	AAB or ABB	34 or 32	✓	A
Biochemistry	MBio	C1A2	4	AAA or AAB	36 or 34	✓	A
Biochemistry with Industrial Placement	MBio	C1A6	4	AAA or AAB	36 or 34	✓	A
Biochemistry with Placement Year	BSc	C701	4	AAB or ABB	34 or 32	✓	A
Biological Sciences	BSc	C100	3	AAB or ABB	34 or 32	✓	A
Biological Sciences	MBio	C1A1	4	AAA or AAB	36 or 34	✓	A
Biological Sciences with Industrial Placement	MBio	C1A5	4	AAA or AAB	36 or 34	✓	A
Biological Sciences with Placement Year	BSc	C101	4	AAB or ABB	34 or 32	✓	A
Biomedical Science	BSc	B900	3	AAB or ABB	34 or 32	✓	A
Biomedical Science	MBio	C1A3	4	AAA or AAB	36 or 34	✓	A
Biomedical Science with Industrial Placement	MBio	C1A7	4	AAA or AAB	36 or 34	✓	A
Biomedical Science with Placement Year	BSc	CB19	4	AAB or ABB	34 or 32	✓	A

Subject area	Award	UCAS code	Duration (years)	Typical offers*		Subject requirements ✓ -	English Language band
				A level	IB		
BIOLOGY (continued)							
Neuroscience	BSc	B140	3	AAB or ABB	34 or 32	✓	A
Neuroscience	MBio	B142	4	AAA or AAB	36 or 34	✓	A
Neuroscience with Industrial Placement	MBio	B143	4	AAA or AAB	36 or 34	✓	A
Neuroscience with Placement Year	BSc	B141	4	AAB or ABB	34 or 32	✓	A

BUSINESS AND MANAGEMENT							
Management	BSc	N200	3	A*AA	38	-	C
Management with Placement Year	BSc	N20Y	4	A*AA	38	-	C
Management (with Foundation Year)	BSc	N20A	4	^	^	-	C
Management (with Foundation Year) with Placement Year	BSc	N20J	5	^	^	-	C
International Management	BSc	N290	4	A*AA	38	-	C

CHEMISTRY							
Chemistry	BSc	F100	3	AAB	34	✓	A
Chemistry	MChem	F105	4	AAA	36	✓	A
Chemistry with Industrial Placement	MChem	F110	4	AAA	36	✓	A
Chemistry with International Placement	MChem	F109	4	AAA	36	✓	A
Chemistry with Medicinal Chemistry	BSc	F121	3	AAB	34	✓	A
Chemistry with Medicinal Chemistry	MChem	F125	4	AAA	36	✓	A

^ See website for details, including our Widening Participation Criteria

*** Typical offers** The typical offers listed are indicative. Those applying for 2024 entry should go to warwick.ac.uk/ug to check the latest offer levels and durations. This includes important information about our courses, and web links to terms and conditions that you should consider before applying. If you have any questions about applying to Warwick, chat to us via warwick.ac.uk/study/livechat, or make an enquiry online at warwick.ac.uk/ug

Subject requirements Visit warwick.ac.uk/ug for full subject requirements and the grades you will need, including GCSE (or equivalent) qualification requirements.

✓ This course requires you to study specific subjects at A level or IB Higher Level. - This course does not require specific subjects at A level or IB Higher Level.



Please make sure you check your course details online before you apply.



Learn more about English Language requirements

Subject area	Award	UCAS code	Duration (years)	Typical offers*		Subject requirements ✓ -	English Language band
				A level	IB		
CLASSICS AND ANCIENT HISTORY							
Ancient History and Classical Archaeology	BA	VV14	3	AAB	34	-	B
Ancient History and Classical Archaeology with Study in Europe	BA	VV18	4	AAB	34	-	B
Classical Civilisation	BA	Q820	3	AAB	34	-	B
Classical Civilisation with Study in Europe	BA	Q821	4	AAB	34	-	B
Classics	BA	Q800	3	AAB	34	✓	B
Classics (Ancient Greek) with Study in Europe	BA	Q801	4	AAB	34	✓	B
Classics (Latin) with Study in Europe	BA	Q802	4	AAB	34	✓	B
Classics and English	BA	QQ36	3	AAB	34	✓	B
English and Classical Civilisation	BA	QQ39	3	AAB	34	✓	B
COMPUTER SCIENCE							
Computer Science	BSc	G400	3	A*A*A	39	✓	A
Computer Science	MEng	G403	4	A*A*A	39	✓	A
Computer Science with Business Studies	BSc	GN42	3	A*A*A	39	✓	A
Computer Systems Engineering	BEng	G406	3	AAA	36	✓	A
Computer Systems Engineering	MEng	G408	4	A*AA	38	✓	A
Discrete Mathematics	BSc	G190	3	A*A*A	39	✓	A
Discrete Mathematics	MEng	G4G3	4	A*A*A	39	✓	A
CYBER SECURITY							
Cyber Security	BSc	H651	3	AAB	34	-	B
ECONOMICS							
Economics	BSc	L100	3	A*A*A	39	✓	C
Economics and Industrial Organisation	BSc	L112	3	A*A*A	39	✓	C
Economics, Politics and International Studies	BSc/BA	LLD2	3	A*A*A	39	-	C

*** Typical offers** The typical offers listed are indicative. Those applying for 2024 entry should go to warwick.ac.uk/ug to check the latest offer levels and durations. This includes important information about our courses, and web links to terms and conditions that you should consider before applying. If you have any questions about applying to Warwick, chat to us via warwick.ac.uk/study/livechat, or make an enquiry online at warwick.ac.uk/ug

Subject requirements Visit warwick.ac.uk/ug for full subject requirements and the grades you will need, including GCSE (or equivalent) qualification requirements.

✓ This course requires you to study specific subjects at A level or IB Higher Level.

- This course does not require specific subjects at A level or IB Higher Level.

Subject area	Award	UCAS code	Duration (years)	Typical offers*		Subject requirements ✓ -	English Language band
				A level	IB		
EDUCATION							
Education Studies	BA	X35B	3	ABB	32	-	C
ENGINEERING							
Automotive Engineering	BEng	H330	3	AAA	36	✓	A
Automotive Engineering	MEng	H335	4	A*AA	38	✓	A
Biomedical Systems Engineering	BEng	H161	3	AAA	36	✓	A
Biomedical Systems Engineering	MEng	H163	4	A*AA	38	✓	A
Civil Engineering	BEng	H200	3	AAA	36	✓	A
Civil Engineering	MEng	H202	4	A*AA	38	✓	A
Electrical and Electronic Engineering	BEng	H605	3	AAA	36	✓	A
Electrical and Electronic Engineering	MEng	H606	4	A*AA	38	✓	A
Electronic Engineering	BEng	H610	3	AAA	36	✓	A
Electronic Engineering	MEng	H612	4	A*AA	38	✓	A
Engineering	BEng	H100	3	AAA	36	✓	A
Engineering	MEng	H102	4	A*AA	38	✓	A
Engineering Business Management	BEng	HN12	3	AAA	36	✓	A
Manufacturing and Mechanical Engineering	BEng	HH73	3	AAA	36	✓	A
Manufacturing and Mechanical Engineering	MEng	HH37	4	A*AA	38	✓	A
Mechanical Engineering	BEng	H300	3	AAA	36	✓	A
Mechanical Engineering	MEng	H302	4	A*AA	38	✓	A
Systems Engineering	BEng	HH35	3	AAA	36	✓	A
Systems Engineering	MEng	HH31	4	A*AA	38	✓	A



Please make sure you check your course details online before you apply.



Learn more about English Language requirements

Subject area	Award	UCAS code	Duration (years)	Typical offers*		Subject requirements ✓ -	English Language band
				A level	IB		
ENGLISH							
English Literature	BA	Q300	3	AAA or A*AB	36	✓	B
English Literature and Creative Writing	BA	QW38	3	AAA or A*AB	36	✓	B
English and History	BA	VQ32	3	AAA or A*AB	36	✓	B
English and Theatre Studies	BA	QW34	3	AAB	34	✓	B
FILM AND TELEVISION STUDIES							
Film Studies	BA	W620	3	ABB	32	✓	B
Film and Literature	BA	QW26	3	ABB	32	✓	B
GLOBAL SUSTAINABLE DEVELOPMENT							
Global Sustainable Development	BASc	L8A1	3	AAA	36	-	C
Economic Studies and Global Sustainable Development	BASc	L1L8	3	A*A*A	39	✓	C
Education Studies and Global Sustainable Development	BASc	XL38	3	AAB	34	-	C
Global Sustainable Development and Business Studies	BASc	L8N1	3	A*AA	38	-	C
Hispanic Studies and Global Sustainable Development	BASc	R4L8	3	AAB	34	✓	C
History and Global Sustainable Development	BASc	V1L8	3	AAA	36	✓	C
Life Sciences and Global Sustainable Development	BASc	C1L8	3	AAB	34	✓	C
Philosophy and Global Sustainable Development	BASc	V5L8	3	AAA	36	-	C
Politics, International Studies and Global Sustainable Development	BASc	L2L8	3	AAA	36	-	C
Psychology and Global Sustainable Development	BASc	C8L8	3	AAB	34	-	C
Sociology and Global Sustainable Development	BASc	L3L8	3	AAB	34	-	C
Theatre and Performance Studies and Global Sustainable Development	BASc	W4L8	3	AAB	34	-	C

*** Typical offers** The typical offers listed are indicative. Those applying for 2024 entry should go to warwick.ac.uk/ug to check the latest offer levels and durations. This includes important information about our courses, and web links to terms and conditions that you should consider before applying. If you have any questions about applying to Warwick, chat to us via warwick.ac.uk/study/livechat, or make an enquiry online at warwick.ac.uk/ug

Subject requirements Visit warwick.ac.uk/ug for full subject requirements and the grades you will need, including GCSE (or equivalent) qualification requirements.

✓ This course requires you to study specific subjects at A level or IB Higher Level.

- This course does not require specific subjects at A level or IB Higher Level.

Subject area	Award	UCAS code	Duration (years)	Typical offers*		Subject requirements ✓ -	English Language band
				A level	IB		
HEALTH SCIENCES							
Health and Medical Sciences	BSc	B990	3	AAB or ABB	34 or 32	✓	B
HISTORY							
History	BA	V100	3	AAA	36	✓	B
History and Philosophy	BA	V1V5	3	AAA	36	✓	B
History and Politics	BA	VL12	3	AAA	36	✓	B
History and Sociology	BA	VL13	3	AAB	34	✓	B
HISTORY OF ART							
History of Art	BA	V350	3	ABB	32	-	B
History of Art with Italian	BA	V3R3	3	ABB	32	-	B
INTEGRATED NATURAL SCIENCES							
Integrated Natural Sciences	MSci	CF10	4	AAA	36	✓	A
LAW							
Law	LLB	M100	3	AAA	36	-	C
Law (4 Years)	LLB	M101	4	AAA	36	-	C
Law with Study Abroad in English	LLB	M108	4	AAA	36	-	C
Law and Sociology	BA	ML13	4	AAB	34	-	C
Law with French Law	LLB	M10A	4	AAB	34	✓	C
Law with German Law	LLB	M10C	4	AAB	34	✓	C
Law with Humanities	BA	MV21	3	AAA	36	-	C



Please make sure you check your course details online before you apply.



Learn more about English Language requirements

Subject area	Award	UCAS code	Duration (years)	Typical offers*		Subject requirements √ -	English Language band
				A level	IB		
LIBERAL ARTS							
Liberal Arts	BA	LA99	3	AAA	36	-	B
LINGUISTICS							
English Language and Linguistics with Intercalated Year	BA	Q311	4	AAB	34	-	B
Language, Culture and Communication with Intercalated Year	BA	X3Q8	4	AAB	34	-	B
Linguistics with Arabic with Intercalated Year	BA	Q2T6	4	AAB	34	-	B
Linguistics with Chinese with Intercalated Year	BA	Q2T1	4	AAB	34	-	B
Linguistics with French with Intercalated Year	BA	Q2R1	4	AAB	34	-	B
Linguistics with German with Intercalated Year	BA	Q2R2	4	AAB	34	-	B
Linguistics with Italian with Intercalated Year	BA	Q2R3	4	AAB	34	-	B
Linguistics with Japanese with Intercalated Year	BA	Q2T2	4	AAB	34	-	B
Linguistics with Russian with Intercalated Year	BA	Q2R7	4	AAB	34	-	B
Linguistics with Spanish with Intercalated Year	BA	Q2R4	4	AAB	34	-	B
MATHEMATICS, STATISTICS, DATA SCIENCE, AND MORSE							
Applicants to these courses may be required to sit an admissions test. Check our website for up-to-date requirements.							
Mathematics	BSc	G100	3	A*A*A or A*A*A* or A*A*AA	39	√	A
Mathematics	MMath	G103	4	A*A*A or A*A*A* or A*A*AA	39	√	A
Mathematics and Statistics	BSc	GG13	3	A*A*A or A*AA or A*A*A*A	39 or 38	√	B
Mathematics and Statistics	MMathStat	GGC3	4	A*A*A or A*AA or A*A*A*A	39 or 38	√	B

*** Typical offers** The typical offers listed are indicative. Those applying for 2024 entry should go to warwick.ac.uk/ug to check the latest offer levels and durations. This includes important information about our courses, and web links to terms and conditions that you should consider before applying. If you have any questions about applying to Warwick, chat to us via warwick.ac.uk/study/livechat, or make an enquiry online at warwick.ac.uk/ug

Subject requirements Visit warwick.ac.uk/ug for full subject requirements and the grades you will need, including GCSE (or equivalent) qualification requirements.

✓ This course requires you to study specific subjects at A level or IB Higher Level.

- This course does not require specific subjects at A level or IB Higher Level.

Subject area	Award	UCAS code	Duration (years)	Typical offers*		Subject requirements ✓ -	English Language band
				A level	IB		
MATHEMATICS, STATISTICS, DATA SCIENCE, AND MORSE (continued)							
Data Science	BSc	7G73	3	A*A*A or A*AA or A*A*A*A	39 or 38	✓	B
Data Science	MSci	G304	4	A*A*A or A*AA or A*A*A*A	39 or 38	✓	B
MORSE	BSc	GLN0	3	A*A*A or A*AA or A*A*A*A	39 or 38	✓	B
MMORSE	MMORSE	G0L0	4	A*A*A or A*AA or A*A*A*A	39 or 38	✓	B
MEDIA AND CREATIVE INDUSTRIES							
Media and Creative Industries	BA	P301	3	AAB	34	-	B
MODERN LANGUAGES							
French Studies	BA	R120	4	ABB	32	✓	B
English and French	BA	QR31	4	AAB	34	✓	B
French and Economics	BA	R1L1	4	AAB	34	✓	C
French and History	BA	RV11	4	AAB	34	✓	B
French and Theatre Studies	BA	R1WB	4	ABB	32	✓	B
French with Film Studies	BA	R1W6	4	ABB	32	✓	B
German Studies	BA	R220	4	ABB	32	✓	B
English and German	BA	QR32	4	AAB	34	✓	B
German and Business Studies	BA	RN21	4	AAB	34	✓	C
German and Economics	BA	R2L1	4	AAB	34	✓	C
German and History	BA	RV21	4	AAB	34	✓	B
German and Theatre Studies	BA	RW24	4	ABB	32	✓	B
German with Film Studies	BA	R2P3	4	ABB	32	✓	B
Hispanic Studies	BA	R400	4	ABB	32	✓	B



Please make sure you check your course details online before you apply.



Learn more about English Language requirements

Subject area	Award	UCAS code	Duration (years)	Typical offers*		Subject requirements ✓ -	English Language band
				A level	IB		
MODERN LANGUAGES (continued)							
Hispanic Studies and Economics	BA	R4L1	4	AAB	34	✓	C
English and Hispanic Studies	BA	QR34	4	AAB	34	✓	B
Hispanic Studies and History	BA	R4V1	4	AAB	34	✓	B
Hispanic Studies and Theatre Studies	BA	R4W4	4	ABB	32	✓	B
Hispanic Studies with Film Studies	BA	RP43	4	ABB	32	✓	B
Italian Studies	BA	R300	4	ABB	32	✓	B
English and Italian	BA	QR33	4	AAB	34	✓	B
History and Italian	BA	VR13	4	AAB	34	✓	B
Italian and Classics	BA	RQ38	4	AAB	34	✓	B
Italian and Economics	BA	R3L2	4	AAB	34	✓	C
Italian and Theatre Studies	BA	R3WA	4	ABB	32	✓	B
Italian with Film Studies	BA	R3W6	4	ABB	32	✓	B
Modern Languages	BA	8R73	4	AAB	34	✓	B
Modern Languages and Economics	BA	R9L1	4	AAB	34	✓	C
Modern Languages and Linguistics	BA	R9Q1	4	AAB	34	✓	B
Modern Languages with Linguistics	BA	R9Q2	4	AAB	34	✓	B
PHILOSOPHY							
Philosophy	BA	V500	3	AAA	36	-	B
Economics, Psychology and Philosophy (EPP)	BA/BSc	L1CA	3	A*AA	38	-	C
Mathematics and Philosophy	BA/BSc	GV15	3	A*A*A	39	✓	A
Philosophy and Literature	BA	VQ52	3	AAB	34	✓	B
Philosophy, Literature and Classics	BA	VQ58	3	AAB	34	✓	B
Philosophy with Psychology	BA	V5C8	3	AAB	34	-	B

*** Typical offers** The typical offers listed are indicative. Those applying for 2024 entry should go to warwick.ac.uk/ug to check the latest offer levels and durations. This includes important information about our courses, and web links to terms and conditions that you should consider before applying. If you have any questions about applying to Warwick, chat to us via warwick.ac.uk/study/livechat, or make an enquiry online at warwick.ac.uk/ug

Subject requirements Visit warwick.ac.uk/ug for full subject requirements and the grades you will need, including GCSE (or equivalent) qualification requirements.

✓ This course requires you to study specific subjects at A level or IB Higher Level.

- This course does not require specific subjects at A level or IB Higher Level.

Subject area	Award	UCAS code	Duration (years)	Typical offers*		Subject requirements ✓ -	English Language band
				A level	IB		
PHILOSOPHY (continued)							
Philosophy, Politics and Economics (PPE)	BA/BSc	L0V0	3	A*AA	38	✓	C
Politics, Philosophy and Law (PPL)	BA	V7MW	3	AAA	36	-	C
PHYSICS							
Physics	BSc	F300	3	A*AA	38	✓	A
Physics	MPhys	F303	4	A*AA	38	✓	A
Physics with Astrophysics	BSc	F3F5	3	A*AA	38	✓	A
Physics with Astrophysics	MPhys	F3FA	4	A*AA	38	✓	A
Mathematics and Physics	BSc	GF13	3	A*AA or A*A*A	38	✓	A
Mathematics and Physics	MMathPhys	FG31	4	A*AA or A*A*A	38	✓	A
Physics with Business Studies	BSc	FN31	3	A*AA	38	✓	A
POLITICS AND INTERNATIONAL STUDIES							
Politics	BA	L200	3	AAA	36	-	B
Politics and International Studies	BA	L260	3	AAA	36	-	B
Politics and International Studies with Chinese	BA	M168	4	AAB	34	-	B
Politics and Sociology	BA	LL23	3	AAB	34	-	B
Politics, International Studies and French	BA	M163	4	AAB	34	✓	B
Politics, International Studies and German	BA	M164	4	AAB	34	✓	B
Politics, International Studies and Hispanic Studies	BA	M166	4	AAB	34	✓	B
Politics, International Studies and Italian	BA	M165	4	AAB	34	✓	B



Please make sure you check your course details online before you apply.



Learn more about English Language requirements

Subject area	Award	UCAS code	Duration (years)	Typical offers*		Subject requirements ✓ -	English Language band
				A level	IB		
PSYCHOLOGY							
Psychology	BSc	C800	3	AAB	34	-	B
Psychology with Education Studies	BSc	C804	3	ABB	32	-	B
Psychology with Linguistics	BSc	C802	3	AAB	34	-	B
SOCIOLOGY							
Sociology	BA	L300	3	ABB	32	-	C
Sociology and Criminology	BA	L314	3	ABB	32	-	C
THEATRE AND PERFORMANCE							
Theatre and Performance Studies	BA	W440	3	ABB	32	-	B

Essential information

This prospectus was accurate at the time of printing. It is, however, published 18 months before enrolment on the courses to which it applies. Given the long interval between drafting/publication and enrolment, some of the information may change. It is, therefore, very important that you check our website for any updates before you apply for one of our courses by following the web link on the course pages or by searching for your course at warwick.ac.uk/ug

Where there is a difference between the contents of this prospectus and our website, the contents of the website take precedence and represent the basis on which we intend to deliver our services to you. You are advised to read the information at warwick.ac.uk/ug/courseinfo/notice

This sets out when, for example, we might make changes to your chosen course, to the fees payable or to student regulations. It is, therefore, important that you read and take note of it.

Any offer of a place to study at the University is subject to terms and conditions. You can read these at warwick.ac.uk/ug/apply/offerholders/aboutoffer

Information about wider student rights and responsibilities can be found at warwick.ac.uk/services/aro/studentrights

*** Typical offers** The typical offers listed are indicative. Those applying for 2024 entry should go to warwick.ac.uk/ug to check the latest offer levels and durations. This includes important information about our courses, and web links to terms and conditions that you should consider before applying. If you have any questions about applying to Warwick, chat to us via warwick.ac.uk/study/livechat, or make an enquiry online at warwick.ac.uk/ug

Subject requirements Visit warwick.ac.uk/ug for full subject requirements and the grades you will need, including GCSE (or equivalent) qualification requirements.
✓ This course requires you to study specific subjects at A level or IB Higher Level.
- This course does not require specific subjects at A level or IB Higher Level.

Open Days 2023

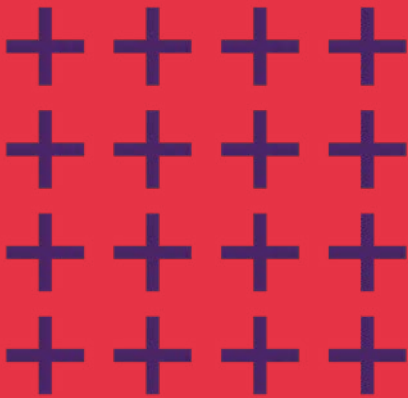
We look forward to welcoming you to our campus Open Days.

Sat 17 June
Sat 24 June
Sat 7 October
Sat 21 October

There are also other opportunities to attend both in-person and online events throughout the year. And our virtual campus tour is packed with content to explore from home.



Find out more



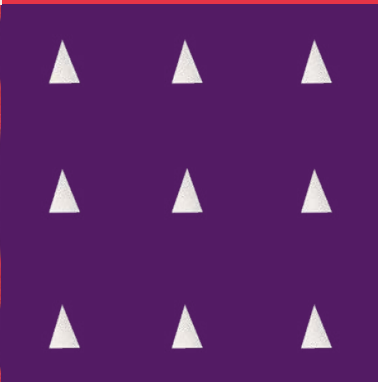
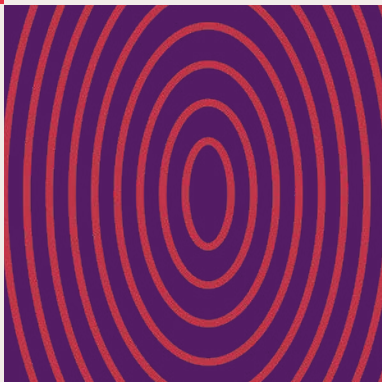
Study with us



Connect with us

@uniofwarwick





University of Warwick
Coventry
CV4 7AL
+44 (0)24 7652 3523
warwick.ac.uk/ug

