



University of Essex

ESSEX

Undergraduate Prospectus 2017

We're proud of our concrete

When our university was built, our first Vice-Chancellor wanted to create an entirely new university, not restricted by established systems and conventions.

Our unapologetically brutalist architecture challenges the physical and educational structure of the traditional redbrick university; our concrete-clad corridors house students who live as well as learn together.

**WE'RE RANKED IN THE TOP 2%
OF UNIVERSITIES IN THE WORLD**

(QS 2014, THE 2015)

**RANKED 2ND IN THE UK FOR
STUDENT SATISFACTION**

(NSS 2015)



**EMPLOYABILITY AND
CAREERS SUPPORT**



**– NOT ONLY WHILE
YOU'RE HERE, BUT
FOR LIFE**

**UNDERTAKE A PLACEMENT YEAR
IN YOUR CHOSEN INDUSTRY AT NO EXTRA
COST – ENHANCE YOUR CV, GAIN WORK
EXPERIENCE AND EARN A SALARY**



**WE'RE THE 21ST
MOST INTERNATIONAL
UNIVERSITY IN
THE WORLD AND
5TH IN THE UK** (THE 2016)



**WE'RE TOP 5 FOR
SOCIAL SCIENCE
AND TOP 20 IN THE
UK FOR RESEARCH
EXCELLENCE** (REF 2014)

Shami Chakrabarti CBE
Chancellor, University of Essex
Civil liberties campaigner



Being the Chancellor of the University of Essex is an enormous privilege.

“ Essex is a particularly progressive university – a leader and pioneer on issues of law, social science and social policy, as well as the sciences and humanities. With its internationally diverse campuses and a research base that’s second to none, Essex is the perfect fit for a human rights campaigner like me, and for anyone who shares a passion for speaking out against injustice and inequality.

“At Essex we encourage our students to aspire to be anyone’s equal but no one’s superior – to be confident but not arrogant, brilliant but humble. If you want more from your university education than just a good degree, if you want to be enlightened and make a difference, Essex is the place to come. ”



1

Why Essex?

Want to see the world?	8
Love to chat?	10
Can't wait to get stuck in?	12
Love to move?	14

2

Studying with us

Our facilities	18
Our teaching and research	22
Support and careers	24

3

Essex living

Our campuses	28
Colchester	28
Southend	32
Make yourself at home	36
Welcome to the family	40
The Essex way of life	42
International students	44



4

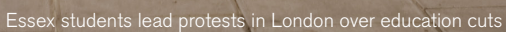
Making it happen

Open Days	48
Fees and funding	50
Apply to us	52

5

Our courses

Full course listing	56
Our partners	152
A great location	154
Small print	156
Index	157



1

Why Essex?

"Freer, more daring, more experimental." These were the words of our first Vice-Chancellor, Sir Albert Sloman. From the student rebellions of the 1960s to our contemporary ground-breaking research, we have never accepted the status quo or been afraid to speak out.

Our academics are world-leaders in their field, conducting life changing research that has real impact on global issues in politics and social policy.

If you're brave enough to have ideas and generous enough to share them, then welcome home.



Want to see the world?

Caught in a tropical rainstorm, Research Assistant for PhD candidate Sarah-Jane Walsh battles the elements whilst studying the future of coral reefs threatened by increasing seawater temperatures



Time abroad at no extra cost

If you've got the Essex spirit of adventure, you're probably as crazy about travel as we are. So if you study abroad for a full academic year, you can do this as part of your Essex degree at no extra cost. We give you the opportunity to make your friends at home jealous with snaps of new food and faraway places, to immerse yourself in another culture, and to prove that you've got the inquisitive, independent, able-to-cope-with-anything attitude that employers love.

Every year we award over £500,000 in study abroad grants and scholarships. You could study for a term or a year at a partner university, undertake a language teaching assistantship, or work on research overseas.

► www.essex.ac.uk/ug17/essexabroad



Love to chat?


Want to speak the
language like a local?

Whether it's to take your first step towards an international career, to talk your way into an upgrade from the hostel dorm or even just because you love to chat, learning a language introduces you to new conversations and cultures.

At Essex we want you to add your voice to a global discussion, so we make language-learning easy. Our Languages for All programme means that you can learn a language alongside your degree – at no additional cost for a year.

► www.essex.ac.uk/ug17/lfa



A hand holding a pink beanie on a stage with other beanies on the floor.

Can't wait to get stuck in?



Clubs and societies

Always wanted to test your ultimate frisbee skills? See yourself dazzling under the bright lights of the stage? Want to help change the world? With over 165 clubs and societies to join, we'll help you develop career-enhancing transferable skills and will make sure that your Essex experience is completely unforgettable. We've got something for everyone – from live music to debating, paintball to cheese and wine – so you can feel completely happy to express your football-kicking, world-cinema watching, Harry Potter-loving self.

► www.essexstudent.com

Get your kit on...

...break a sweat, pump some iron. We know that exercise improves your wellbeing, can keep you calm during those stressful exam periods, and can help you do better in your studies. So at Essex, we make sure that you can access a whole range of sports. Whether you're the next Usain Bolt or simply want to try out something new, you can access our indoor and outdoor pitches and courts, all-weather pitch, sports hall, squash courts, and climbing wall. And, if this isn't enough for you, we also offer great value-for-money gym memberships.

We have more than 45 Essex Blades sport teams offering you the chance to join an active and competitive community, playing in local and national fixtures.

We also have a range of sports scholarships and bursaries, for all you sporting stars out there.

► www.essex.ac.uk/ug17/sport

Love to move?





Biological sciences students collecting field data in Scotland

2

Studying with us

At Essex, we're about the people who love to learn how, but want to challenge why. Our researchers always have their fingers on the pulse. They are involved in the latest research findings and emerging trends, and this feeds directly into your course.

We combine different methods of teaching to make sure you get the most out of your subject, while also developing the transferable skills that are sought by employers. Depending on your course, you can expect a mixture of lectures, seminars, lab work and field trips – you'll soon be continuing lecture-hall debates over coffee, poring over dusty library archives, and enthusiastically packing your rucksack for field trips.



Communal study spaces

We've got loads of communal study spaces for you to work and play in. Work on projects over coffee, use our interactive technologies, or catch a summer film in our secret garden.



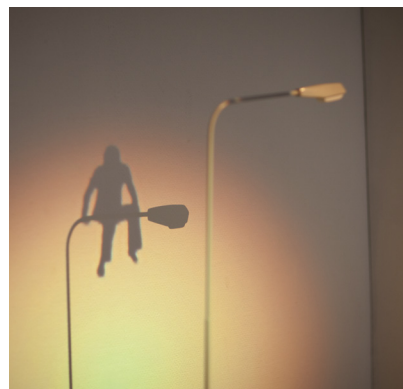
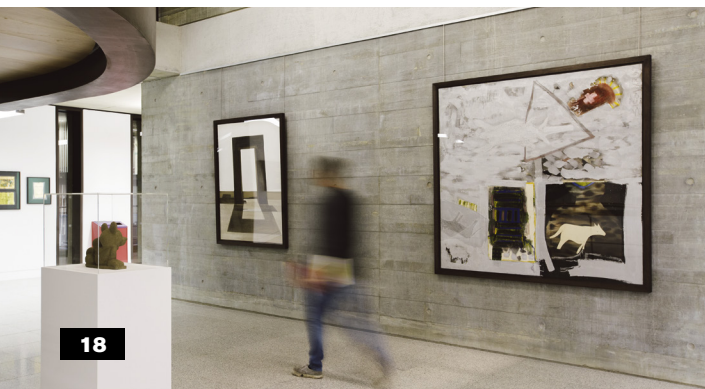
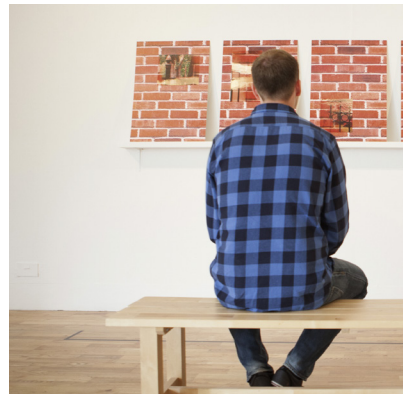
Lakeside Theatre

See professional touring performances, perform in a homegrown show, or relax at the popular open mic at our on-campus theatre.



Silberrad Student Centre

Make the most of 24/7 access to IT-rich areas, including pods for group working. We also have brand new studios for our students' SX:TV station and Red Radio, plus offices for our student newspaper *The Albert*.





Our facilities

From communal study areas dotted around our campuses to a brand new student centre and library extension. From cosy Students' Union social spaces to our zero carbon business school. Our campuses are designed to give you the freedom to combine your interests and to meet new people from across different departments. Whatever your subject, and whatever your passion, we've got the space to make it happen.



Our libraries

Our Albert Sloman Library in Colchester overlooks the lakes, and houses some fascinating special collections, including some of the country's best on Latin America, Russia, and Eastern Europe. At Southend, The Forum library is a vibrant contemporary space with outstanding learning facilities.



Art Exchange

See contemporary art exhibitions, listen to artists talk about their work, or attend one of the art workshops held in our on-campus gallery.





Indoor coral reef

Our tropical research aquarium is fully climate-controllable, for experiments on organisms from microbes to coral.



Film equipment

Our Media Centre lets you use professional-level studios, cameras, audio and lighting equipment, as well as industry-standard editing facilities.



Edge Hotel School

Based in our beautiful four-star Wivenhoe House, this is the first hotel school of its kind in the UK, where you don't just study Hotel Management – you experience it. If you're not an Edge Hotel School student, it's the perfect place for a spot of afternoon tea.



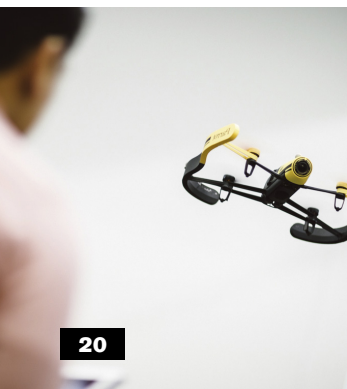
Trading floor

Our virtual trading floor is supplied with Bloomberg Business data and a trade simulation system attached to live markets, so you can practise buying and selling in real time.



Human Performance Unit

Our research facilities include treadmills, seven-camera biomechanics systems, and gas and blood analysis systems, helping both elite and recreational athletes.



Robotics floor

We have one of the world's leading robotics research facilities, housing robotic wheelchairs, spiders, dogs, football players, fish and robotic aircraft, which you can often see flying around our arena!





Clifftown Theatre

Based in a renovated Victorian Church in Southend, our Clifftown Theatre provides an inspirational and atmospheric environment for rehearsals, technical work, performances and professional touring productions.



Evolve Gym

Our Evolve Gyms feature state-of-the-art equipment and a variety of classes to suit all your health and fitness goals.



Interpreting Labs

Our new interpreting training lab can be used to interpret conferences of up to 40 people. You can use the lab as part of your studies, giving you the tools you need to become an expert interpreter.



Campus farm

Are you all about sustainable living? Our Colchester Campus farm provides space for the green-fingered among you to grow your own fruit and vegetables.



Centre for Brain Science

We've got world-class equipment which can directly measure and modulate brain activity, as well as a range of equipment to track eye movements and physiological response.



University archives

Handle unique, fascinating items including notebooks, letters, early drafts, and recordings of unpublished interviews. Our extensive archives mean that you can even work on never-before-edited manuscripts.



Our teaching and research

A close-up photograph of a man with short brown hair, wearing a white lab coat, looking through the eyepiece of a black microscope. The background is a blurred laboratory setting with blue and white tones.

From exposing UK-based financial fraudsters to securing solutions for refugees in Colombia, the impact of our research is felt across the globe. And from day one, you're a part of that. Our flexible course structures allow you to tailor your degree around your own interests, developing specialism in your own area. You also have the opportunity to contribute to current Essex research and make positive changes to the world around you. Don't change the channel, change the news.

Collaboration on Campus

Just like the best ideas, our departments don't exist in isolation. Our campuses were designed to break down traditional barriers – a walk down one of our corridors can take you on an intellectual journey via Maths, Language and Linguistics, and Sociology.

There are no elitist hierarchies or curtained-off lounges at Essex. Our students and staff work and socialise together in a tight-knit environment that fosters formidable partnerships. We bring together the very best minds from across the globe, and you'll be exposed to a wide array of different perspectives and opinions, which means that we won't always agree – but that's how great ideas are born.

Our provocative THINK! lecture series takes the debate even further. Hear from voices outside of traditional academia such as sex workers, MPs, campaigners, convicted criminals, directors, scientists and soldiers.

Connecting the very best minds from across the University and beyond makes Essex a force to be reckoned with.

Your Essex degree is unique

Education often puts people into boxes. You're a biologist, a film-maker or a criminologist. But the world's most pressing problems have no regard for disciplinary boundaries, and we don't want you to be limited by them either.

Our high level of optionality means that you can make your degree yours, by choosing modules that build specialist knowledge and skills in the areas you wish to pursue.

Being interdisciplinary creates almost limitless opportunities.

Get your hands dirty

While lectures are a valuable part of your learning journey, they're not the whole story. Once you've found your niche, we want you to take it as far as you're willing to go.

At Essex, you not only learn from the best, but also get the chance to experience and contribute to the current, exciting work that's happening all around you. Our Undergraduate Research Opportunity Placements offer students a structured route

to paid participation in real-life research, and our academic departments offer plenty of other ways to nurture your developing research skills. We want you to help us change the world.

Some of the investigations that our undergraduates are currently working on include:

Policing with the help of big data

Today's police forces are using increasingly sophisticated statistical techniques to help predict crime hot-spots – yet there is little evidence on whether these techniques actually help reduce crime. Our researchers are working closely alongside Essex Police to monitor and help improve their policing strategies.

Freshwater predator-prey interactions, from the lab to the wild

A recent analysis determined that Earth has lost 75% of its wildlife in freshwater habitats since 1970. Our student researcher is helping to investigate the role of predator size on the structure, functions, and dynamics of freshwater communities, by catching wild fish of different sizes and examining the feeding behaviour of two types of prey in our labs.

Language and schizophrenia

How can we investigate the relationship between mental illness and creative writing? Part of a larger research programme on 'Outsider Writing', this project is exploring 20th century texts that deal with language and schizophrenia. Our student researcher is digging through our archives to identify passages in which schizophrenics have been quoted or reported on, making transcriptions and summaries of the key passages which will be essential to the wider project.

New theatre installation piece examining the UK's role in the arms trade

Help explore alternative ways in which we can tell stories about war and the arms trade. Our student researcher is analysing interviews with experts from academia and non-governmental organisations in order to help transform their insights into a theatrical piece. We aim to stage a multi-site performance installation that will guide audience members through scenes in which they are cast as decision-makers, arbiters, and peace-keepers.

Support and careers

The graduates who really succeed are the ones who put in that little bit extra. We support you in making the most of your time at university and when you're ready for the next step, our Employability and Careers Centre and extended alumni network will help you navigate the job market.

Placement years

Our placement years are free and give you a whole year in a role of your choice. This is your employability trump card. An opportunity to gain real-world experience that's directly relevant to your career path, this shows prospective employers you're a real self-starter.

► www.essex.ac.uk/ug17/placements

Education Achievement Report (HEAR), which you can share with potential employers. You can also complete the Big Essex Award, which helps identify the skills you've developed over your time at Essex so that you can show future employers why they should hire you.

► www.essex.ac.uk/ug17/jobs

Work experience and your career

Our careers team provide one-to-one support throughout your time at Essex. They ensure employability skills are embedded in your modules and courses, and arrange for companies to visit campus. Plus once you've left Essex, you can still benefit from their support for the rest of your life!

We help you get unbeatable skills and experience for your CV through work and volunteering opportunities, or by helping raise money for some brilliant charities. Our Students' Union Creative Studios house two recording suites (broadcasting live radio), a newsroom and a TV studio. They are looking for anyone who wants to be creative; so whether you're a writer, presenter, producer, editor, photographer, videographer or professional juggler, the space is yours to create whatever you want.

All your academic and extra-curricular achievements will go on your digital transcript, the Higher

Earn while you learn

There are lots of opportunities to work part-time while you study. Jobs range from bar, retail or administrative work, to roles as a web designer or sports coach. We'll help you find a suitable part-time job, as well as Frontrunner posts, internships and other vacation work.

Our multi award-winning Frontrunners scheme gives you the opportunity to undertake paid, challenging, career-relevant employment within the University. This can help you to develop the higher-level skills you need to compete for the best jobs once you graduate. This is as good for us as it is for you: we benefit from your vibrancy, your ideas and your experience.

Postgraduate study

We offer an Alumni Loyalty Discount if you stay on for postgraduate study, which can reduce your first-year postgraduate tuition fee by up to 33%.

► www.essex.ac.uk/ug17/loyalty

Wellbeing and support

Essex celebrates diversity and challenges inequality. We work hard to create a living, learning, and working environment that enables you to bring your whole self to University. So, whatever your age, gender, ethnicity or sexual orientation; whether you have a disability or not; whether you follow a religion or not; you can be yourself here, and expect to be treated with dignity and respect.

We also have a Residence Life team who help create a harmonious community for you to live and learn in. Our Residents' Assistants are current students and are there to make sure you're able to get involved in University life.

Our pioneering and award-winning night-time support service, Nightline, means that you've always got someone who will listen if you need any extra support while you're in Colchester or Southend.

We have Student Services Hubs at all three campuses. They provide you with one place to go for practical advice, a confidential conversation, or general information and guidance on University life.

We also have a multi-faith chaplaincy, to support students from all faiths, a high-quality nursery providing childcare, and an NHS health centre.

Essex forever

When you graduate, you will join our alumni community of 90,000 former students in more than 140 countries. You will have access to networking opportunities, continued careers support, social events and other great benefits including discounts on further study. It really is membership for life.

► www.essex.ac.uk/ug17/alumni

Recent graduate destinations

- | | |
|----------------------|---------------------------------|
| ■ Accenture | ■ KPMG |
| ■ Allen & Overy | ■ Lloyds Banking Group |
| ■ Amnesty | ■ Microsoft |
| ■ Barclays | ■ Morgan Stanley |
| ■ Bloomberg | ■ Oxfam |
| ■ Cancer Research UK | ■ Procter & Gamble |
| ■ Credit Suisse | ■ Panasonic |
| ■ Deloitte | ■ PricewaterhouseCoopers |
| ■ Ernst & Young | ■ The Royal Shakespeare Company |
| ■ GlaxoSmithKline | ■ United Nations |
| ■ Goldman Sachs | ■ Willis Group |
| ■ Intel | |



3

Essex living

University life extends well beyond the lecture hall. At Essex there's so much going on that you could never leave campus and still find something new to do. Step outside and you'll find that there's much more to explore throughout the local area. From parks to promenades, witchcraft to WAGS. From an ever-so-easy trip into London to hidden historical treasures, pretty villages and picturesque countryside – we want you to throw yourself in at the deep end and soak up life.

At Essex we're a bunch of risk-takers and opinion-makers, stereotype-breakers and world-shakers. And now it's your turn to keep the Essex spirit alive. Whichever campus you're based at, you'll soon feel like a member of the Essex community.

Colchester Campus

It's hard to explain the atmosphere on campus. With so much going on, it's impossible to get bored. Bag a bargain at our bustling Thursday street market. Settle into an afternoon of people-watching by the lake. Explore the Latin American artworks hidden in the midst of our bold, brutalist buildings. You'll always find something to do, whatever your mood.





Colchester Campus: based just outside Britain's oldest recorded town...



Community on campus

The squares are always buzzing with life. There are loads of opportunities to catch up with friends, have a pint outside the SU bar or grab lunch between lectures. Get cakes and curries on market day, piping hot pies on the No. 64 campus bus, or mega milkshakes in our Happy Days diner. Or you could join in with karaoke, quizzes and a game of pool in one of our many bars, catch a film in our cinema Cine10, or dance the night away in our award-winning nightclub SubZero.

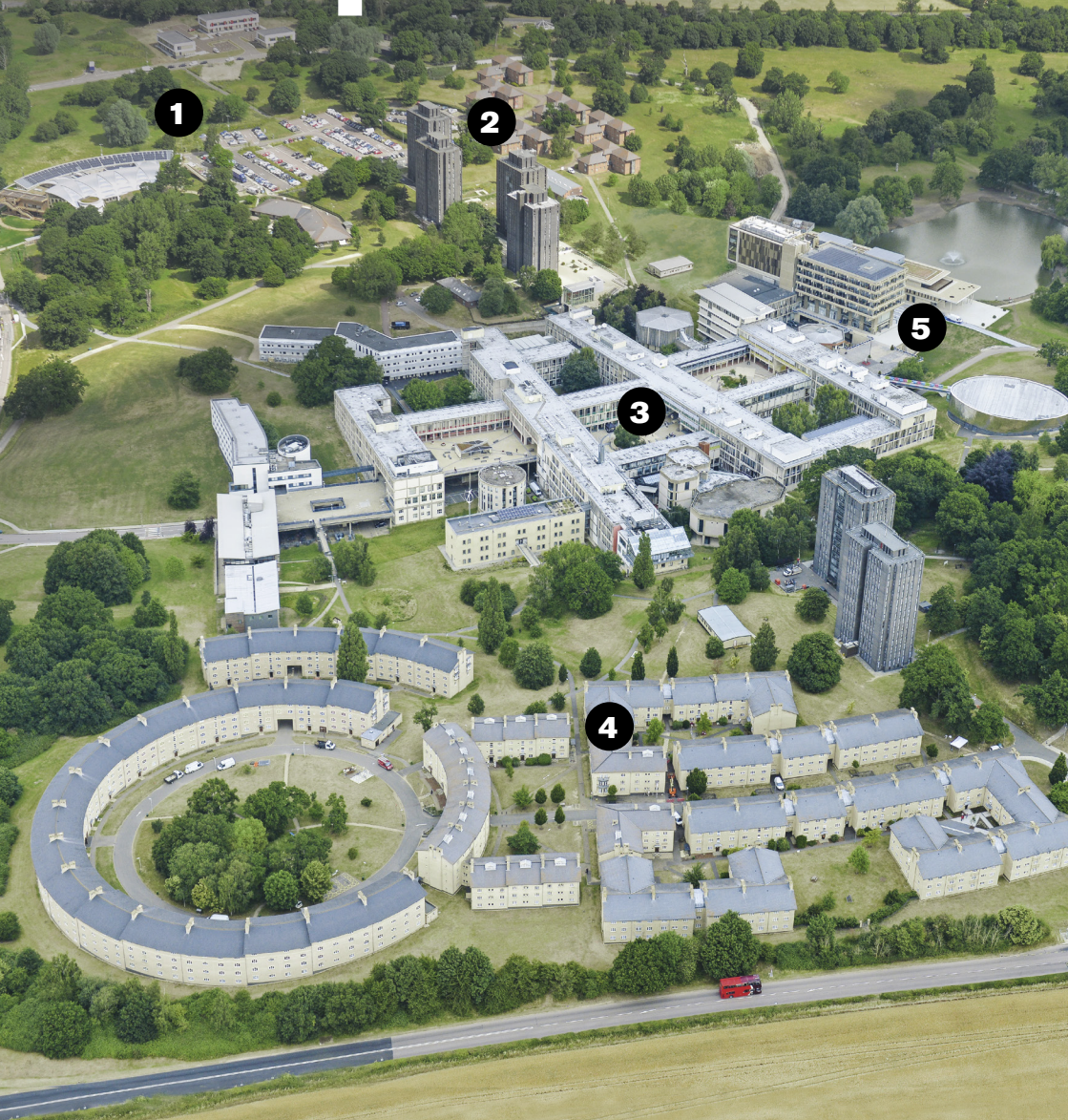
Sports and societies

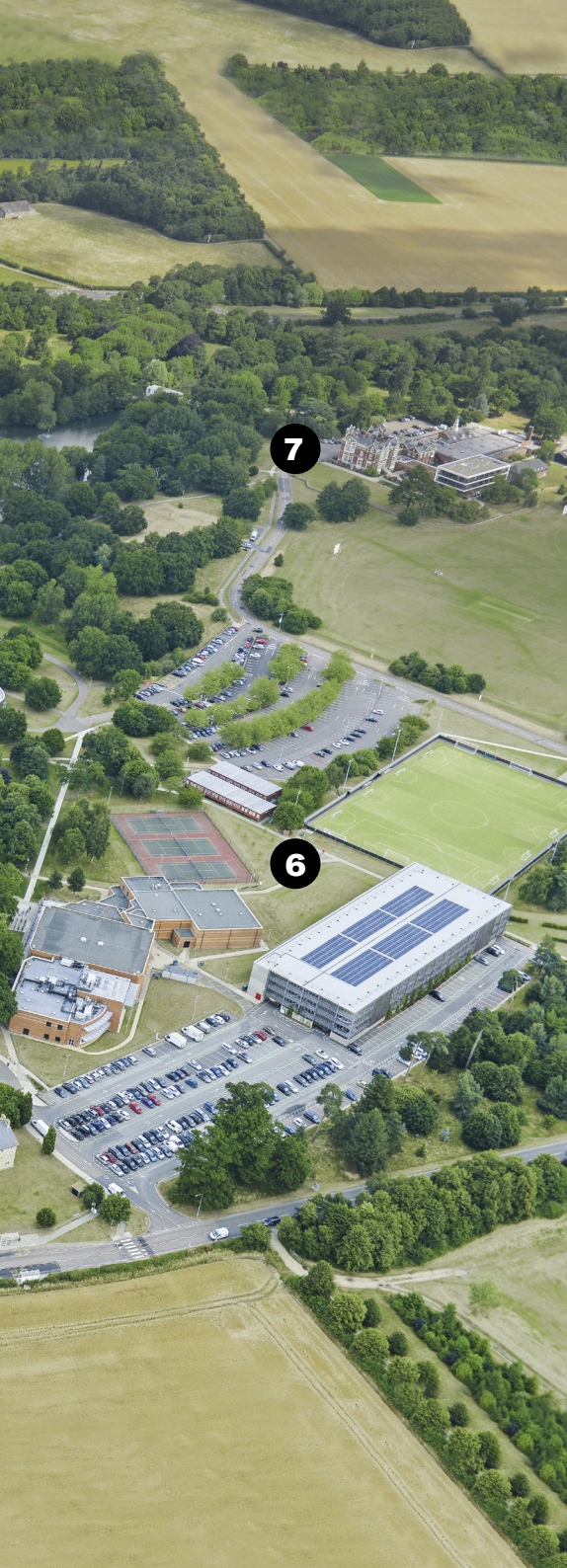
This is your chance to pursue your passions. You can meet like-minded people or try out something new with our SU's 165 sports clubs and societies. As well as providing opportunities for high-performing athletes, with our first-class gym, professional fitness staff and competitive sport provision, at Essex we want to make sure that everyone can get involved. There are over 30 drop-in sport sessions a week, and regular leagues and tournaments that are more relaxed.

Creative Colchester

Our campus is an inspiring place to be – did you know that artist John Constable painted Wivenhoe Park (now home to our Edge Hotel School) in 1816? And we're still mad about the arts today. We bring both internationally famous and emerging artists into the heart of our campus, and offer you the chance to work with them. We're the proud home of ESCALA, a world-renowned Latin American art collection, and also offer opportunities for students to hone their creative skills at our Art Exchange gallery. Never satisfied with the ordinary, Art Exchange has so far released 15 lobsters, singing post boxes, and a pair of Victorians onto campus. What they do next could be up to you. Our Lakeside Theatre also hosts internationally acclaimed plays, live music, performances by our own (incredibly talented) drama students, and you can get involved through the regular open mic nights, show auditions and creative workshops.

Colchester Campus





1 North-west campus

- University Quays accommodation (10 minute walk)
- The Meadows accommodation (5 minute walk)
- Essex Business School
- Day Nursery

2 North campus

- North Towers accommodation
- The Houses accommodation
- Health Centre
- Tony Rich Teaching Centre
- The North Teaching Centre

3 Central campus

- Lecture Theatre Building
- Academic departments
- Lecture and seminar rooms
- Students' Union
- Bars, cafés and restaurants
- Shops, banks and Post Office
- Information Centre

4 South campus

- South Towers accommodation
- South Courts accommodation

5 East campus

- Ivor Crewe Lecture Hall
- Silberrad Student Centre
- Albert Sloman Library
- Lakeside Theatre and Café
- Art Exchange
- Waterstones bookshop
- Parkland and lakes

6 South-east campus

- Tennis courts
- Synthetic turf pitch
- Sports Centre
- Evolve Gym

7 Wivenhoe Park

- Wivenhoe House restaurant and hotel
- Edge Hotel School
- Campus farm
- Sports pitches and parkland

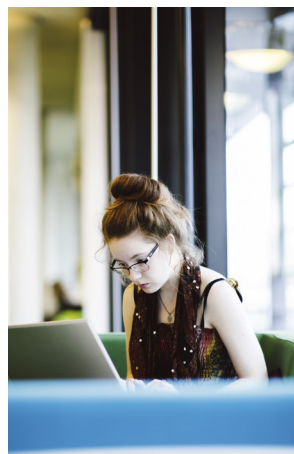
Southend Campus



Welcome to sunny Southend-on-Sea, a vibrant and modern seaside town that boasts the world's longest pleasure pier and seven miles of stunning coastline. Affectionately known as 'London's playground', you can sail, kitesurf, or cycle along the coast, take a ride on the rollercoasters at Adventure Island, or enjoy fish and chips on the beach. Our campus is based in the very heart of the town, where we've got over 300 places to eat, award-winning nightlife, museums, sporting opportunities, and even an international airport.



Southend-on-Sea: Buckets (and spades) of traditional seaside entertainment.



Social Southend

Our SU's new social venue, the SU Lounge, is fully run and owned by students and is the ideal place to catch up with friends. This is your home-from-home, for studying, grabbing a coffee and a snack, playing Xbox or Playstation, or just hanging out between classes. If you fancy yourself a bit of a sporting hero, our Evolve Gym is conveniently located at University Square. There are a variety of classes every week. So whether you're new to sport or just want to try something different, there's sure to be something to inspire you. We've also been awarded a prestigious purple flag award for our amazing nights out. With great comedy nights, seafront pubs, shows, bars and clubs, the Southend nightlife is hard to beat.

Theatre

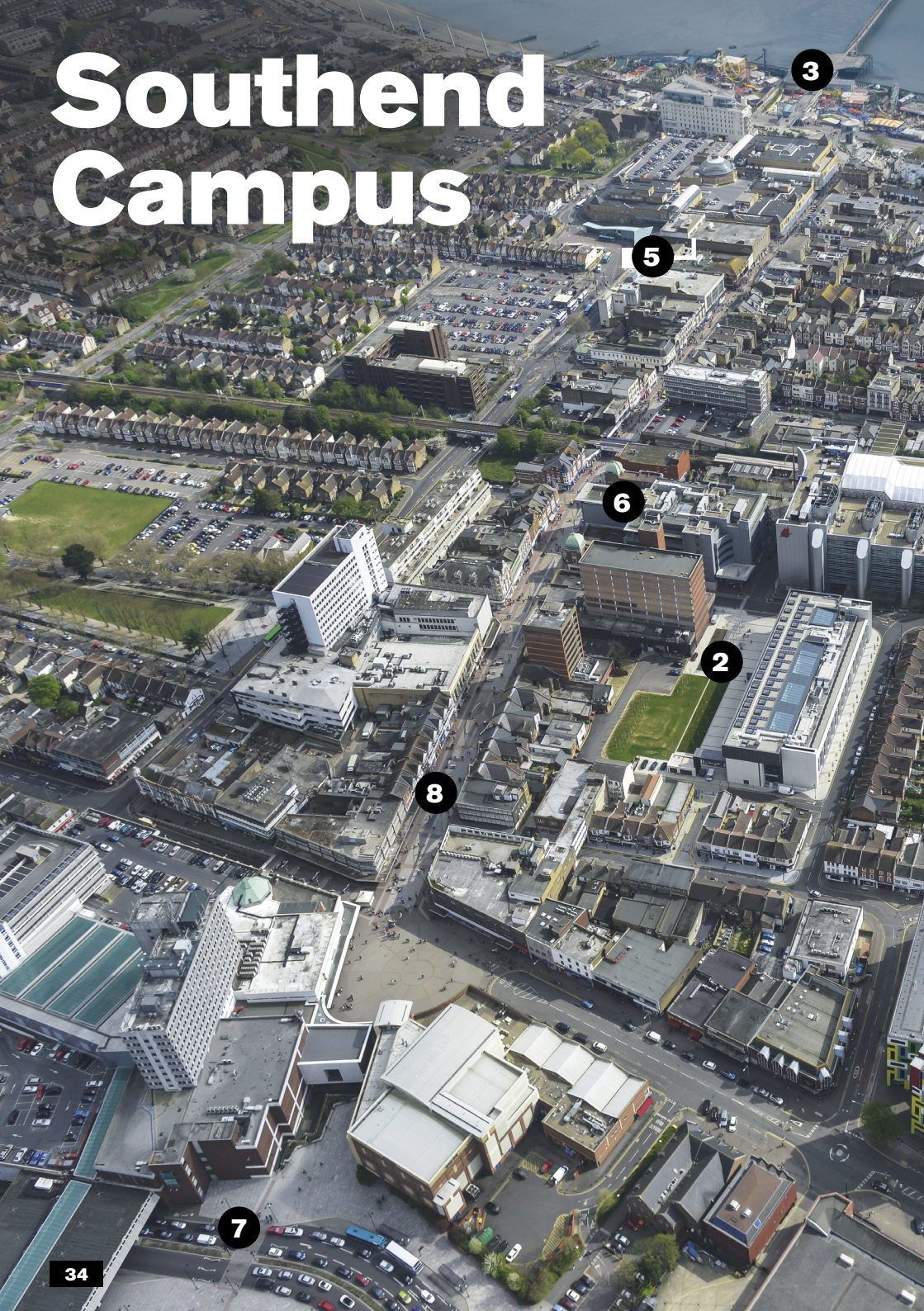
You'd expect a thriving theatrical scene where so many of our acting and drama students are based, and Southend doesn't disappoint. Our Clifftown Theatre and Studios provides rehearsal space for our East 15 Acting School students within a renovated gothic-style church, and hosts

regular public performances which range from the extraordinary to the absurd. And you don't have to spend your time waiting in the wings – there are plenty of opportunities for others to get involved too, with workshops, summer schools, and community events where you can show off under the spotlight. Alternatively, why not check out a show at the Cliffs Pavilion, or visit our other East 15 students at the Corbett Theatre on our Loughton Campus.

Arts and music

Studying in the centre of town means that you're immersed in a creative space throughout your time here. We've got an incredible live music scene, from classical music at Concert in the Park to fresh talent at Battle of the Bands. The Focal Point Gallery in The Forum, in addition to the many other galleries dotted around town, provides plenty of reason to pick up a paintbrush or camera. And where better to be inspired than on the sunny south Essex coast? All of this, plus numerous film, book, and cultural festivals, make Southend a hotbed of creative activity.

Southend Campus





1 University Square

- University Square accommodation
- Supermarket
- International shops

2 The Forum

- 24/7 access to The Learning Hub
- Student Services
- Public and academic library
- Lecture and seminar rooms

3 Seafront

- Southend Pier
- Adventure Island amusement park
- Arcades
- Beach and promenade

4 Clifftown

- Clifftown Theatre and Studios
- Prittlewell Square gardens
- The Railway Hotel music venue

5 Bus station

- Great bus links, just a few minutes from campus

6 The Gateway Building

- Academic departments
- In-house doctor and dentist
- Southend Central train station (50 minutes to London)
- Lecture and seminar rooms

7 Victoria Gateway

- Southend Victoria train station for travel to Colchester, London and Southend Airport for flights all over Europe

8 Southend High Street

- The Odeon cinema
- Cafés and restaurants
- Post Office
- Chain stores and independent shops

Make yourself at home

Accommodation options that suit you



We place as much importance on living as we do on learning, so we guarantee all students University accommodation for their first year at Essex.

Living on campus

Moving away, possibly for the first time, might feel daunting. But don't worry, we'll make sure that wherever you choose to live quickly feels like home. At Essex you'll soon make friends with your new neighbours, cover your walls with posters and create memories that will stay with you forever.

You are guaranteed a bedroom for your first year of study – just make sure you've had your place confirmed, your accommodation application is received by the published deadline, and you accept your offer of study.

Included in your rent is wifi, heating, hot water, electricity and the cleaning of communal areas (such as kitchens) – so no need to worry about

arguments over whose turn it is to Hoover! Rooms are normally let for the full academic year from late September to the end of June, which means that even if you're away from the University during the winter and spring vacations, you don't have to remove your things from your room.

Most flats are mixed-gender, although single-gender flats are available, and we offer some single-occupancy adapted rooms. We have a limited amount of self-contained accommodation which is suitable for either single or double occupancy. We cannot guarantee accommodation for first-year students who are accompanied by a partner, but we'll do our very best to help. Just make sure you get in touch as early as you can if you think you need to chat any of this through with us.



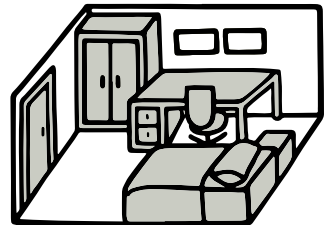
Living nearby

SULets is a free lettings service run by the Students' Union from our Colchester Campus. They provide support for everyone moving off campus, complete property and landlord checks to ensure your safety, and help you find your ideal rented properties, all free of charge.

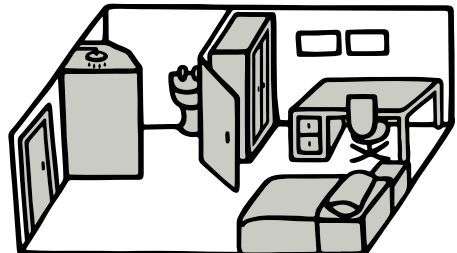
Living at home

While there are lots of benefits to living on campus, you may decide that it makes more sense for you to stay at home. With a jam-packed programme of social events, plus hundreds of clubs and societies to join, you'll still be as much a part of student life as your friends who live on campus.

Standard bedroom



En suite bedroom





South Courts

Size: 1,218 rooms

Location: Colchester Campus

Cost per week: £135.38

4-12 rooms per flat, en suite facilities, some adapted rooms available



The Towers

Size: 1,142 rooms

Location: Colchester Campus

Cost per week:

£76.93 - £88.20

13-16 rooms per flat, shared showers and toilets



The Meadows

Size: 228 townhouse rooms with shared bathrooms plus 420 en suite rooms

Location: Colchester Campus

Cost per week: £131.39 and £140.98 respectively

4-12 rooms per flat ground floor lounge/kitchen



Did you know...

That the East of England is the cheapest area of the UK for students? Based on accommodation costs, nights out, and public transport, a recent report in the Times Higher Education ranked Essex in the Top 10 university towns for lowest student living costs.

It's likely that our rental charges for 2017-18 will increase from these current prices. We'll publish the new prices on our website as soon as they are available.



University Quays

Size: 766 rooms

Location: Colchester Campus

Cost per week from: £123.69

**7-8 rooms per flat,
en suite facilities**



University Square

Size: 497 rooms and

64 studio flats

Location: Southend Campus

Cost per week: £135.25 and
£166.82 respectively

**11 rooms per flat, en suite
facilities, studio flats have
own kitchenette, some
adapted rooms available**



The Houses

Size: 267 rooms

Location: Colchester Campus

Cost per week: £122.64

**4-6 rooms per flat,
en suite facilities,
some adapted rooms
available**



Settling in

We understand how important it is for you to be happy in your new home. At Essex everything is at your fingertips with launderettes, Evolve Gym, and convenience stores close at hand, and we are continually upgrading our residences to create vibrant living and learning environments.

Our Residence Life team creates a harmonious community for you to live and learn in. You'll have

a Residents' Assistant based in your area of accommodation who'll meet you soon after you arrive. They'll make sure that you have opportunities to get involved in University life and social activities, and provide support outside of office hours.

We offer a safe and secure living environment with support available 24-hours a day.

E askthehub@essex.ac.uk

Welcome to the family



We're famous for
our Students' Union
at Essex, and for
good reason.

It's completely different to anywhere else, because here you're not just a member of a normal Students' Union, you're part of a family. An unconventional family made up of over 13,000 students, all with unique quirks and bold ambitions. A straight-talking family that won't tell you what to think and will always encourage you to challenge, imagine and create. Join the family @EssexSU

As a member of the Essex SU family you'll receive
your very own personalised SU Heirloom

We believe every Essex student has the power to change the world, to make it a better place, and that by working together we can achieve amazing things. As your Students' Union we'll make you four simple promises if you come to Essex:

We promise to help you get an amazing degree and job

The two most important things to you are the two most important things to us. We're here to inspire and motivate you. To lift you when you're in the middle of deadlines. To cheer you on as you walk into exams. To pick you up if anything ever goes wrong. To give you skills that will make other CVs weep. To help you wipe the floor with the competition in interviews and land your dream job. We'll believe in you 100% and won't rest until we're celebrating with you at graduation.

We promise to give you an awesome membership

We will give you a Students' Union experience to make all your friends who aren't at Essex jealous.

We run an entire student town on our Colchester Campus for you to explore, complete with student shops, cafés, bars, night-club, restaurants, gaming spaces and even a hair salon and a cinema.

Imagine being able to find people who are into the same stuff as you really easily. We've given students the tools to set up over 100 societies, from an African Caribbean society to a Harry Potter society. These ones are already waiting for you, or we can help you start your own (like Game of Thrones or breakfast foods).

And if you're into sport there's more good news – we run more than 40 sports teams, so you can be part of as many as you like. This is just the tip of the iceberg, but we guarantee you'll never be bored at Essex.

We promise to benefit all students

At Essex the Students' Union is here for everyone, no matter your age, gender, nationality, faith, sexuality, year of study, or shoe size. We promise to always listen to the needs of every different student and act on them. In our family there's no pretentious cordoned-off VIP area, we're open to everyone.

Mature students make up 37% of our undergraduate community in an average year. Our Mature and Part-Time Students' Association (MAPSA) is part of the Students' Union. Its job is to make sure that you have everything you need. You will automatically become a member and it's completely free.

► www.essex.su/mapsa

We promise to shape everything around you

This is where we're really different – unlike other Students' Unions we'll let you customise everything to suit your personality.

Whatever you want to do, we're here to help make it happen. From getting a big idea off the ground to asking for help in finding a house, nothing's too big or too small. All you need to do is text, tweet or Facebook us and we'll get on it. You choose what drinks we serve in our bar and what products we stock in our shops – just write it on the wall and we'll do our absolute best to get it in stock for you. You'll even get your own frame on the SU Bar wall where you can post up a photo of you, your family, next door's cat, or whatever else you like.

The Essex way of life



A county famous
for its big skies, and
even bigger ideas.

Let's face it – Essex has got it all. From arts, culture and water sports; vintage shopping and ghost walks; to high tea in country estates, plus the hottest gigs around. The hardest bit will be fitting it all in...

Indulge in some healthy and tasty food and drink
at Pulp Kitchen, Southend-on-Sea



Take advantage of the lively
Essex music scene

Eating and drinking

Award-winning Rossi ice cream, tea in the park. A slap-up meal somewhere swanky, chips on the seafront, local beers by the pretty Wivenhoe waterside. Where do we even start? Essex is a foodie's dream. Later on at night, the county really lights up, catering for everyone. Whether you want a chilled catch up or a buzzing night out, we've got bars that serve cocktails in teapots, real ale pubs, wine bars and top nightclubs. Life in Essex doesn't stop just because the sun's gone down.



Colchester Castle – built by the Normans, the keep
is the largest surviving example in Europe

Out and about

When you're in Colchester, make sure you head down Sir Isaac's Walk and Eld Lane, two of the quirkiest streets in the town centre, where you'll find retro clothing, old-school sweet shops and quaint tearooms. For the animal-lovers among you Southend has a fab aquarium and Colchester Zoo is definitely worth a visit – it's one of the best in Europe, and Top 2 in the UK. Meanwhile, just along the coast from Southend, Leigh-on-Sea boasts a Broadway full of independent shops and eateries.

Festivals and arts

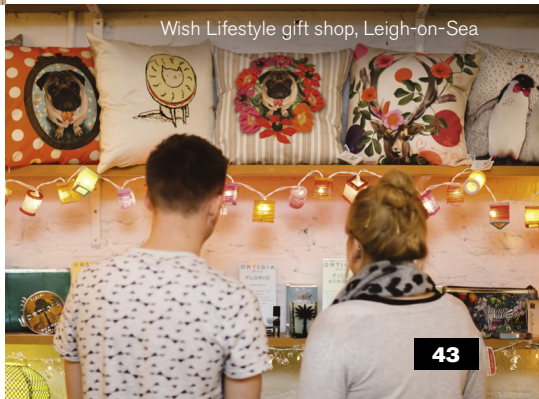
There are bags of arts opportunities in both Colchester and Southend. We've got galleries, live music venues, and theatres aplenty, so you can gorge yourself silly on music, comedy, photography and art. Essex is a festival-goer's paradise, too, from giants of the scene like V-Festival to smaller, kookier affairs such as the Southend Carnival, Leigh-on-Sea folk festival and Colchester Oyster festival.



Los Donuts, Leigh-on-Sea

History and culture

Essex is full of hidden historical gems. Colchester Castle lets you get your geek on, with loads of opportunities to learn about our gory local history or dress up like a soldier (your call). It's surrounded by a gorgeous park where you can watch fireworks in winter or big-screen tennis in summer, and tucked away in other corners of the town are Roman walls, priory ruins, and our iconic water tower 'Jumbo'.



Wish Lifestyle gift shop, Leigh-on-Sea

International students

Essex introduces you to people from all over the planet. We are a global community that lives, works and plays together. You study an internationally relevant curriculum, become part of our diverse community, and are taught by academics whose research has global impact. We give you the best chance to compete in a global economy.

Support with your studies

You may find studying at a UK university very different to your home country, and it might be your first time studying in English. We help you to get the most out of your studies by providing a range of academic and English language support classes. Our academic departments also provide support services, with most departments running student mentoring schemes and lecturers offering one-to-one guidance in your studies.

awards for the quality of our international student representation and make every effort to help you feel at home from the moment you arrive.

Getting to London and Europe

Essex has excellent links by rail and road into London. Trains run between central London and both Colchester and Southend, and take under an hour.

There are six airports within two hours' commute from our campuses. All three campuses are within 45 minutes of London Stansted and two hours of London Heathrow. Coach and bus services run between Stansted and the University's Colchester Campus or Southend town every hour during the day. Southend also has an airport just outside the town which flies to popular European destinations.

Welfare and support

As an international community, we understand the needs and concerns of our international students. Our Student Services Hubs can help with general wellbeing and funding advice. Welfare services available also include immigration advice, religious worship facilities, healthcare providers and housing guidance.

Essex forever

The fun doesn't stop when you graduate. As a lifelong member, once you leave Essex to start new adventures, our global alumni network means you'll always be connected to Essex and like-minded people from all over the world.

International societies

Our Students' Union runs a huge range of student societies that you can join when you arrive at Essex. This includes the International Students' Association, which helps international students feel at home at the University, as well as 27 international societies that celebrate the culture of our global student community. We've won national

94% of our international students are in employment or further study within six months of graduating from Essex.

Aside from opening your door to our global network of professionals, you'll be able to catch up with old friends and meet new Essex members at our networking events which take place all over the world.

You can find out more about our past students plus contact details of alumni from your country through our website.

► www.essex.ac.uk/ug17/alumni

Fees and funding

We understand that going to university is an investment, and you'll want to know exactly how much it's likely to cost. For more information on fees and funding while you're at Essex, turn to page 50 or visit our website.

► www.essex.ac.uk/ug17/isfees

Applying

Once you're ready to make an application, turn to page 52 for more information on how to apply, or visit our website.

► www.essex.ac.uk/ug17/isapply

Accommodation

If you're an international student, University accommodation is guaranteed for the duration of your studies, provided you apply and accept your offer by the published deadline. For more information on accommodation, turn to page 36 or visit our website.

► www.essex.ac.uk/ug17/isaccommodation

Get in touch

If you have any questions, or would like to get in touch, we'd love to hear from you.

E admit@essex.ac.uk

A member of our global family celebrating Holi at our Colchester Campus





4

Making it happen

Are you ready to challenge convention? To start asking difficult questions? To fight for change?

If what you've read so far makes you want to join our global family of movers and shakers, then read on for all the nuts-and-bolts information you need about Open Days, financing your studies and making an application to study at Essex.

► www.essex.ac.uk/ug17/apply

Open Days

Think meeting world-class academics and like minded students. Think family. Think home. Think taster lectures. Think making your mark. Think art. Think hula-hooping. Think tea and cake, copious amounts of cake. Think all of this plus a BBQ, a cheeky mocktail or two and a bag of goodies to take home.

Think you know Open Days?
Think again.

► www.essex.ac.uk/ug17/opendays





We all know what an Open Day is, right?
Your chance to meet your department, look around campus, find out about student finance. You probably think an Essex Open Day is just the same. Of course, we'll show you all the important stuff. But why stop there? You don't know Open Days until you've experienced an Essex Open Day.



Colchester Campus

18 June 2016
17 September 2016
22 October 2016



Southend Campus

25 June 2016
15 October 2016



Can't make an Open Day?

Don't worry – contact us and we can arrange a campus tour for a date that suits you. Or, if you can't visit, you can take a 360° tour online to get a taste of life at Essex.

E tours@essex.ac.uk

► www.essex.ac.uk/ug17/virtualtour

► www.essex.ac.uk/ug17/tours



Fees and funding

Our tuition fees enable us to invest in your future and continue to provide first-class facilities, as well as to offer a multi-million pound support package ensuring students from all backgrounds can benefit from an Essex Education.



UK and EU students

Taking out a loan can feel like a big financial commitment, so we want to make sure you know exactly how it works. The UK Government provides UK and EU students with a tuition fee loan, meaning you do not need to pay tuition fees upfront or during your course.

If you're a UK student you can also take out a maintenance loan, which helps cover living expenses while you're at university. You only start repaying your loan once your income reaches a certain level, and if your income drops below this, you'll stop making repayments – so you don't need to worry about not keeping up.

If you're an EU student, we encourage you to research financial support offered in your home country. National grants or loans may be provided by your government or local careers service.

Our UK and EU tuition fees for the academic year 2017-18 are yet to be confirmed, but as a guide, our undergraduate fees for 2016-17 were £9,000 per year.

International students

Our fees for the academic year 2017-18 are yet to be confirmed, but as a guide, our fees for 2016-17 were between £11,350 and £14,950 per year.

If you'd like advice on whether you'd be classified as an overseas student in relation to your tuition fees, contact our Undergraduate Admissions Office.

E admit@essex.ac.uk

The UK Council for International Student Affairs (UKCISA) can also give you advice and information on fee statuses. Visit their website for more information.

► www.ukcisa.org.uk

As part of the visa application process, you'll be asked to produce evidence of your ability to pay tuition fees and to cover living expenses during the course. There's more information on our website about the current UK Home Office requirements.

► www.essex.ac.uk/ug17/immigration

Previous study

If you have previously studied at a higher education institution, this may affect the amount of financial support available to you. To find out more about this, or if you've got any other questions, contact our Student Funding Team.

E funding@essex.ac.uk

Living expenses

At January 2016 prices, the minimum sums required for living expenses (for a single student) in 2016-17 are estimated to be between £7,120 and £9,340 for a 39-week course. This includes the cost of a single room in University-provided accommodation, as well as an allowance to cover food and other necessary expenses.

At Essex, there are lots of opportunities to work part-time while you study if you need a bit of extra cash – see page 24 for more information on jobs offered within the University.

Scholarships and bursaries

We offer financial packages to support students, including those from lower income households. Additional support for UK students includes bursaries for care leavers, students with refugee status, and students from lower income households studying on a year abroad, or doing an industrial or voluntary placement.

Use our online scholarship finder to search for funding opportunities.

► www.essex.ac.uk/ug17/sb

Apply to us



Applying to Essex is straightforward. We make things as easy for you as possible, so you can get on with the important business of enjoying Essex.

How do I apply?

Applications for the majority of our courses should be made online via UCAS. See subject pages for exceptions:

- Hotel management 98
- International Year One in Business 104
- International Foundation Programme 106
- Occupational Therapy 128
- Physiotherapy 134
- Therapeutic care 138

► www.ucas.com

When should I apply?

If you're applying from the UK or EU for October 2017 entry, you should send your application to UCAS by 15 January 2017, although we normally consider applications after this date, subject to the availability of places on the relevant course. If you live outside the EU, you should aim to send your application to UCAS by 30 June 2017.

Next steps

Once we receive your application from UCAS it is considered by our Admissions Team. When making a decision on your application, we take into account a range of factors, including GCSE performance, AS-level results (if taken), subjects taken at A-level (or equivalent qualifications), predicted grades, your personal statement and your academic reference.

UCAS will officially inform you when a decision has been made on your application. You'll also receive information from us if we make you an offer. Once you've received a decision from all your choices, UCAS will ask you to accept one offer as your firm (first) choice and one offer as your insurance (second) choice via UCAS Track.

Interview and Visit Days

If you're based in the UK, we'll invite you to either an Interview Day or a Visit Day (depending on your subject). This will give you the chance to meet members of staff and students, and have a look around the University. If you're not resident in the UK but would like to visit our campuses, we would love to show you around. Weekday tours can be booked through our website.

► www.essex.ac.uk/ug17/visitdays

Confirming your place

If your offer is conditional on exam results, and you go on to meet the conditions specified in the offer, we'll confirm your place. If your results don't quite meet the conditions, we may still confirm your place, but this depends on the results and the availability of places. If you don't meet the conditions of your offer and don't secure a place on your chosen course, you may be offered an alternative course. You also may be offered a foundation option through our International Academy although some are only open to EU or overseas students. Our decision is usually made within a few days and you'll be notified by UCAS.

Deferred entry

The majority of our courses enable you to take a gap year. You can apply in the normal way during 2016-17, but should indicate your year of entry as 2018 on your UCAS application. Applications for deferred entry will be considered on the same basis as those for entry in October 2017.

Second-year entry

We're happy to consider applications for entry to the second year of study for most of our courses. For direct entry to the second year, we would normally expect you to achieve at least 55-60% overall in the first-year modules of a comparable course at another institution. Contact our Undergraduate Admissions Office for further information.

E admit@essex.ac.uk

Other things to consider

Some courses require you to undergo a Disclosure and Barring Service check, when working with children and/or vulnerable adults, and a Work Health Assessment.

When you apply you can declare whether you have a disability or health issues so we can provide support. We have a team of disability and wellbeing advisers, dyslexia tutors, and other specialist staff.

Entry requirements

UK students

Typical entry requirements are described on each subject page of this prospectus. Visit our online Course Finder for additional information.

► www.essex.ac.uk/ug17/courses

The wide range of qualifications that we consider include the following:

- A-levels
- BTEC qualifications
- International Baccalaureate Diploma and Certificates
- QAA-approved Access to HE Diplomas
- Open University courses
- Practising professional qualifications

Our typical offer will require you to achieve specific grades in three A-levels (or equivalent) for most courses, although we consider additional qualifications. For example, if your results fall short of the offer level by a small margin, your result in the Extended Project or an additional AS-level will be taken into account. We want you to stand the best chance of benefiting from an Essex Education.

We accept either General Studies or Critical Thinking as one of your three A-levels. We will also consider your application if you are re-taking one or more exams.

This applies to students taking modular A-level examinations and those taking the reformed linear A-level examinations. For further information on our policy regarding qualifications reform, please visit our website.

► www.essex.ac.uk/ug17/reforms

GCSE requirements

Our general entrance requirements are a minimum of two full A-levels and five GCSEs at grade C or above, including English, or equivalent. Some courses also have additional GCSE subject requirements which you'll find on the relevant subject pages. If you don't currently meet our GCSE requirements, contact our Undergraduate Admissions Office for advice.

EU and international students

If you're from outside the UK, we are more than happy to make offers based on EU and international qualifications that are considered equivalent to our

standard A-level offer. Contact our Undergraduate Admissions Office for more information on specific qualifications.

Up-to-date information is also available on our online Course Finder.

► www.essex.ac.uk/ug17/courses

Immigration and applying for a visa

If you're applying from outside the European Economic Area and require a visa to study in the UK, you'll need to apply under Tier 4 of the UK Government's Points Based Immigration System (PBIS).

We are required to ensure compliance with UK Home Office regulations as a Tier 4 Sponsor. In some circumstances, we may be unable to make an offer or issue a CAS if an applicant is unable to meet all Tier 4 requirements, including when there have been changes to these requirements made by the UK Home Office. Refer to our webpage for information about immigration and applying for a visa.

► www.essex.ac.uk/ug17/immigration

English language requirements

You are required to have GCSE English at grade C or above (or equivalent). If English isn't your first language, you can demonstrate your level of English language by achieving a specified score in IELTS or another equivalent test that we accept. You don't need to achieve this level before making your application, but it will be one of the conditions of your offer. Our IELTS requirements are published on our online Course Finder. See the table opposite as a guide.

Contact our Undergraduate Admissions Office for further information about these and other English language tests that we accept.

E admit@essex.ac.uk

For full details of our University's English language requirements, including UK Visas and Immigration minimum component scores, please visit:

► www.essex.ac.uk/see/ug-intl-english

(for applicants who require a Tier 4 visa)

► www.essex.ac.uk/see/ug-eu-english

(for EU/EEA/Non-Tier 4 applicants)

ENGLISH LANGUAGE REQUIREMENTS

Point of entry	Course(s)	IELTS (academic version)
Pre-degree	International Foundation Programme	5.0*
	Four-year courses with a foundation year	5.5*
	International Year One in Business	5.5, with a minimum of 5.0 in writing*
First-year	All other courses	6.0**
Second-year	All	6.5**

* Note that students who need a Tier 4 visa to study in the UK must meet the UK Home Office Visas and Immigration's minimum English language requirements, including component requirements.

† Note that BA Multimedia Journalism, BSc Nursing and BA Social Work have different English language requirements. See relevant subject pages for further details.

English language courses

We also offer other full-time pre-sessional English language courses which can be taken before your degree. For these and other pathway courses please visit our website.

► www.essex.ac.uk/ug17/international

East 15 Acting School

If you apply for a course at East 15 Acting School, you must apply directly to East 15 as well as UCAS. Most courses require you to attend an audition, interview or technical theatre assessment.

► www.essex.ac.uk/ug17/east15

Further information

Undergraduate Admissions Office

E admit@essex.ac.uk

T +44 (0)1206 873666



5

Our courses

Accounting, finance and banking	58	Genetics	92	Modern languages	124
Acting and theatre	60	Global studies	94	Nursing: Adult nursing,	126
Actuarial Science	62	History	96	Mental health nursing	
American studies	64	Hotel management	98	Occupational Therapy	128
Art history	66	Human rights	100	Oral health science	130
Biochemistry	68	International Academy	102	Philosophy	132
Biological sciences	70	International Year One in Business	104	Physiotherapy	134
Biomedical science	72	International Foundation Programme	106	Politics and International relations	136
Business and management	74	Journalism	108	Psychoanalytic studies/Therapeutic care	138
Computer science	76	Latin American studies	110	Psychology	140
Criminology	78	Law	112	Social work	142
Drama	80	Liberal arts	114	Sociology	144
Economics	82	Literature and creative writing	116	Sports and exercise science	146
Electronic engineering	84	Marine biology	118	Sports therapy	148
English language and linguistics	86	Marketing	120		
European studies	88	Mathematics	122		
Film studies	90				

Accounting, finance and banking

WHY ESSEX?

1

We are ranked in the Top 200 business schools in the world for accounting and finance (QS World University Rankings 2015)

2

Our state-of-the-art trading floor gives you hands-on experience with industry-standard Bloomberg software

3

Up to six ACCA exemptions are available with selected courses

Graduate careers

- Accountancy
- Auditing
- Credit risk management
- Equity management
- Financial and business analysis
- Financial management
- Investment banking
- Stockbroking
- Tax management

Experience real-time trading in our specialist labs

The world of accounting, finance and banking is complex and fast-changing.

Our renowned courses are designed to develop your ability to tackle complex problems with a solid professional and ethical awareness. Our professionally recognised courses are academically rigorous and closely aligned to professional bodies, opening the door to a wide range of careers. Studying at Essex Business School is a very smart investment.

Popular modules

- Auditing
- Business Law
- Corporate Finance
- Corporate Governance
- Financial Accounting and Analysis
- International Banking
- International Finance
- Management Accounting
- Options and Futures
- Risk Management and Financial Institutions

“All of my modules provided valuable insight into real-life problems. They made me more curious about pursuing a career in finance. I am currently working as an Intern (Analyst) in Beechbrook Capital, a Private Debt management company in London, and have already secured another internship in Ardian, a Private Equity company.” Henriette Hessen, BSc Finance '14

COURSE	UCAS CODES			TYPICAL ENTRY REQUIREMENTS
	3 years	+ year abroad	+ placement year	
BSc Accounting*	N400	N402	N404	A-levels: BBB. GCSE: Mathematics C. IB: 30 points, including Standard Level Mathematics grade 4, if not taken at Higher Level. ^o ^o Please note that Maths in the IB is not required if you have already achieved GCSE Maths at grade C or above. [†] A-level (or equivalent) in French is required, if French is taken as the major language. Entry requirements for students studying BTEC qualifications are dependent on units studied. Advice can be provided on an individual basis. The standard required is generally at Distinction level.
BSc Accounting and Finance*	N420	NNK3	N422	
BSc Accounting and Management*	NN24	NNK2	NN27	
BSc Accounting with Economics*	NL41	NKL1	NL44	
BSc Banking and Finance [■]	N390	NH90	N392	
BSc Finance* [■]	N300	N302	N304	
BSc Financial Management* [■]	N340	NH40	N343	
BSc Banking and Finance with a Modern Language [†]		NR3Y		
BSc Banking, Finance and Modern Languages [†]		NRH9		
BSc Finance with a Modern Language* [■]		N3R9		
BSc Finance and Modern Languages [†]		NR39		
BSc Finance with Mandarin* [■]		N3T1		

For additional GCSE and English language requirements, see p54. * International and EU applicants can take this course with a foundation year. For information, see p102. [■] Please note this course is not available to native speakers of Mandarin. [†] If you are a native speaker, you will not be offered modules to study in your own language. [■] Awarded Q-Step Affiliate status, which means you can take a specific degree path to graduate with enhanced quantitative skills which employers are looking for.

Acting and theatre



WHY ESSEX?

1 East 15 is one of the UK's leading acting schools and is fully accredited by Drama UK

2 We give you access to a substantial network of respected industry practitioners

3 You benefit from state-of-the-art facilities including studios and innovative theatre spaces

What can I do after I graduate?

Over the last few years our graduates have worked at the Royal Shakespeare Company, Royal National Theatre, The Royal Court, The Old Vic, Birmingham Rep, New End Theatre and Vienna's English Theatre, as well as innumerable touring productions, television programmes and feature films. Other graduates are working on Theatre in Education projects in the Third World and many have formed their own production companies. Awards from the Edinburgh Festival and beyond are testament to their success and ours.

East 15 students rehearsing *Worlds Apart* – three individual productions devised by the cast, performed in our Clifftown Studios

Personal discovery. Intuition. Technical Skill.

We place equal importance on developing these aspects of your craft. True to our founding principles, our aim is to provide you with the skills and confidence to continually develop throughout your career. We received a resounding endorsement from our students having attained a remarkable 94% score for student satisfaction (NSS 2015).

Course structure:

In your first year you undergo training that introduces you to the core disciplines: acting technique, voice, singing, movement and contextual studies. You explore objective self-assessment, development of observational skills and research, imagination and improvisation.

“ I feel very privileged to have undertaken a course that not only allowed me to secure an agent and work as an actor on stage and screen, but also enabled me to use my skills as a practitioner to initiate and create work for myself. Training at East 15 will, for me, always be one of the best decisions I ever made. ”

Adam El-Hagar, BA Acting and Contemporary Theatre '12. Recently appeared in the BBC2 drama series *Peaky Blinders*.

COURSE	UCAS CODES	TYPICAL ENTRY REQUIREMENTS
	3 years 1 year	
LOUGHTON CAMPUS		
BA Acting	W411	Successful audition, plus A-levels: CDD, or the equivalent in UCAS tariff points, to include 2 full A-levels. BTEC Extended Diploma: MMP (in relevant subject).
BA Acting (International)	W83A	
BA Acting and Contemporary Theatre	W441	
BA Stage and Production Management	DKAS	Successful interview and technical aptitude workshop, plus A-levels: CDD, or the equivalent in UCAS tariff points, to include 2 full A-levels. BTEC Extended Diploma: MMP (in relevant subject).
Cert HE Theatre Arts		W410 Successful audition, plus A-level: E or equivalent qualification.
SOUTHEND CAMPUS		
BA Acting and Community Theatre	W496	Successful audition, plus A-levels: CDD, or the equivalent in UCAS tariff points, to include 2 full A-levels. BTEC Extended Diploma: MMP (in relevant subject).
BA Acting and Stage Combat	W412	
BA Physical Theatre	W494	Successful physical workshop audition, plus A-levels: CDD, or the equivalent in UCAS tariff points, to include 2 full A-levels. BTEC Extended Diploma: MMP.
BA World Performance	W495	Successful audition, plus A-levels: BBC, or the equivalent in UCAS tariff points, to include 2 full A-levels. BTEC Extended Diploma: DDM (in relevant subject). IB: 29 points.
Cert HE Theatre Arts		W410 Successful audition, plus A-level: E or equivalent qualification.

For additional GCSE and English language requirements, see p54.

► www.essex.ac.uk/ug17/east15

Actuarial Science



WHY ESSEX?

1 Our course exempts you from key Institute and Faculty of Actuaries (IFoA) exams

2 You have access to our dedicated computing facilities that provide real-world experience

3 Our world-class lecturers ensure an exceptional learning and teaching environment

Graduate careers

- Accountancy
- Consultancy
- Education
- Engineering
- Environmental sustainability
- Government
- Insurance
- Investment banking
- Operations management
- Risk assessment

The domino effect – actuarial science combines the study of causation, risk and applied mathematics

Risk is opportunity – being an actuary is a shrewd career choice.

Actuarial science applies mathematical and statistical skills to problems arising in applied subjects such as commerce, government, insurance and finance. Actuarial science at Essex covers the full range of core skills essential for the profession. It is predicted by the US Department of Labor that the employment of actuaries is expected to grow faster than any other occupation in the coming years, making it a very wise degree choice.

Popular modules

- Contingencies
- Finance and Financial Reporting
- Financial Mathematics
- Introduction to Economics
- Options and Futures
- Probability and Statistics
- Risk Management
- Statistical Methods
- Statistics
- Survival Models

“ It didn’t take long to feel at home at Essex – the Department of Mathematical Sciences made a lot of effort to help us settle in, and made me feel very welcome. My course has enabled me to talk to actuaries and get an insight into how they work on a day-to-day basis. From these university-organised networking opportunities, I have been able to make contacts which mean I will be returning for shadowing days at both AXA and AVIVA. ”

Lilliane Kamalendran, BSc Actuarial Science student

COURSE	UCAS CODES			TYPICAL ENTRY REQUIREMENTS
	3 years	+ year abroad	+ placement year	
BSc Actuarial Science	N323	N324	N233	<p>A-levels: AAB, including A in Mathematics, or ABB, including B in Further Mathematics. Please note that we are unable to accept A-level Use of Mathematics in place of A-level Mathematics.</p> <p>IB: 33 points, including Higher Level Mathematics grade 6.</p>

For additional GCSE and English language requirements, see p54.

We have exemptions from CT1, CT2, CT3, CT4, CT5, CT6 and CT7, and have applied for exemption from the remaining CT subject.

American studies

WHY ESSEX?

1

We are the top American Studies course in the country for student satisfaction

2

Your year abroad is entirely free of tuition fees, unlike at most other universities

3

You can study abroad at a wide range of excellent partner universities across the US

Graduate careers

- Advertising and PR
- Civil Service
- Education
- Government
- International organisations such as the UN and NATO
- Media
- Non-governmental organisations (NGOs)
- Politics

The United States remains a hugely influential player on the global stage.

The place of the US in history and politics, the complexity of its society, and its massive contribution to world culture, provides an endlessly fascinating range of material to study. You also have the unique opportunity to spend part of your course in the US, where you'll gain a wide range of valuable skills for the future, as well as a rich understanding of this incredible country.

Popular modules

- American Society: Ethnic Encounters in the Making of the USA
- Clash of the Superpowers: The History of the Cold War
- Development, State Building and Conflict
- In Slavery: The African-American Experience
- Introduction to US History
- Introduction to US Literature
- Introduction to US Politics
- Post-War United States Fiction
- Screening the 'American Century': History, Ideology and US Cinema
- The Special Relationship? Anglo-American Relations 1850-2005
- The United States and the Vietnam War
- Introduction to US Sociology

“ The opportunities my course gave me, most importantly the opportunity to study in the US, set me apart from other candidates when applying for graduate roles. Studying at Essex also helped me feel confident in my own knowledge and abilities, so the fact that I'm the youngest employee in my office doesn't intimidate me when it comes to contributing ideas. ”

Antonia Storey, BA American (United States) Studies '14, Human Resources Coordinator Emirates Airline and Group, Dubai

COURSE	UCAS CODES		TYPICAL ENTRY REQUIREMENTS
	3 years including term abroad	+ year abroad	
BA American (United States) Studies	T700	T708	A-levels: BBB, including an essay-based subject. IB: 30 points, including a Higher Level essay-based subject grade 5. Entry requirements for students studying BTEC qualifications are dependent on units studied. Advice can be provided on an individual basis. The standard required is generally at Distinction level.
BA American (United States) Studies with Film	T7P3	T7W6	
BA Criminology and American (United States) Studies	MT2R	MT27	

For additional GCSE and English language requirements, see p54.

Art history

WHY ESSEX?

1

We are one of the few top-ranked art history schools in the UK to offer a BA in Cultural Studies

2

You will be taught by our expert staff from your very first year – a rarity in UK art history courses

3

We house the most important collection of Latin American art in Europe, ESCALA

Graduate careers

- Advertising
- Charities
- Education
- Fashion
- Galleries
- Marketing
- Media
- Museums
- Public relations
- Publishing
- Teaching
- Visual merchandising

What is art? Dr Matt Lodder (pictured) explores the history of tattooing and body modification

Our world is now dominated and driven by visual media.

Understanding art and visual culture has never been more challenging and urgent. We prepare you to work in fields that require a nuanced knowledge of art and visual culture — and to become an active participant in our complex visual world. You will gain a foundation in canonical forms of art and architecture and also learn about examples of visual culture that are often marginalised or overlooked. Founded by pioneers in the field, our art history provision ranks as one of the UK's very best: 6th for research excellence among art history departments (REF 2014), and 8th based on The Complete University Guide (2016).

Popular modules

- After Impressionism: From Van Gogh to Klimt
- Art, the Law and the Market
- Becoming Modern: From Futurism to Surrealism
- Collect, Curate, Display: A History of the Museum
- Inventing the Future: Early Contemporary 1945-1980
- Picturing the City: Paris, Capital of the Nineteenth Century
- The Work of Art in the Age of Digital Reproduction: Film, New Media, Software and the Internet
- Visualising Bodies
- Art Revolutions
- Photography in History

“Essex has a reputation for pioneering research on art from Latin America. During my course I was given the opportunity to work on an innovative project on Object-Based Learning, for which we developed around five different workshops. I also helped to organise the art competition ‘I AM ESSEX’, helping to curate the large-scale exhibition of selected entries.”

Gisselle Giron Casas, BA Art History '14

COURSE	UCAS CODES		TYPICAL ENTRY REQUIREMENTS
	3 years	+ year abroad	
BA Art History*	V314	V35A	A-levels: BBB. IB: 30 points. BTEC Extended Diploma: DDM (in relevant subject). † A-level (or equivalent) in French is required, if French is taken as the major language.
BA Art History and History	VV31	VV3C	
BA Curatorial Studies	V351	V352	
BA Film Studies and Art History	VW36	PV33	
BA Literature and Art History*	QV23	QV32	
BA Art History and Modern Languages ^{†*}		VR39	
BA Art History with Modern Languages ^{†*}		V3R9	
BA Philosophy and Art History	VV53	VV5H	

For additional GCSE and English language requirements, see p54.

* International and EU applicants can take this course with a foundation year. For information, see p102.

† If you are a native speaker, you will not be offered modules to study in your own language.

Biochemistry

WHY ESSEX?

1

No university offers a more rounded, academically challenging and supportive education

2

Our teaching is underpinned by research – new ideas and theories are tested in the classroom

3

We insist on small-group tutorial teaching to complement your formal lectures

Graduate careers

- AstraZeneca
- Clinical science in the NHS
- Dentistry courses
- Education
- GlaxoSmithKline
- Lab research
- Masters degrees
- Medicine courses
- PhD studentships
- Scientific administration
- Scientific publishing
- Scientific sales

Develop your knowledge and practical skills in our dedicated labs

Every component of life is beautifully connected.

Biochemistry addresses how the structure of biological macromolecules determines their functions in cellular processes. Studying biochemistry allows you to appreciate how the processes of life function at the molecular level. At Essex you are taught by an international team of world-leading experts at the forefront of their fields. In your final year you contribute to ongoing projects in our state-of-the-art research labs. Learn to think and behave like a scientist.

Popular modules

- Bioinformatics
- Genetics and Evolution
- Membrane Biology and Bioenergetics
- Metabolism
- Metals in Biology
- Molecular Cell Biology
- Proteins and Macromolecular Assemblies
- Rational Drug Design
- Research Project
- Structural and Molecular Enzymology

“Everyone at Essex made me feel so welcome, and the overall friendliness on campus is overwhelming. The modules I enjoyed most were *Cancer Biology* and *Virology*, which allowed us to admire nature’s work at its finest – fascinating and also a little scary! I completed the Big Essex award and attended many activities organised by the Employability and Careers Centre, and I’ve now secured a position to teach secondary science and A-level Chemistry/Biology.”

Abigail Baty, BSc Biochemistry '15

COURSE	UCAS CODES			TYPICAL ENTRY REQUIREMENTS
	3 years	+ year abroad	+ placement year	
BSc Biochemistry	C700	C703	C701	<p>A-levels: BCC, including Chemistry and a second science or Mathematics. Pass required in science practical element of A-level Biology, Chemistry or Physics.</p> <p>GCSE: Mathematics C.</p> <p>IB: 28 points, including Higher Level Chemistry and a second science or Mathematics grade 5, plus Standard Level Mathematics grade 4, if not taken at Higher Level.^o</p> <p>^o Please note that Maths in the IB is not required if you have already achieved GCSE Maths at grade C or above.</p> <p>Entry requirements for students studying BTEC qualifications are dependent on units studied. Advice can be provided on an individual basis. The standard required is generally at distinction level.</p>

For additional GCSE and English language requirements, see p54.

Biological sciences



WHY ESSEX?

1

Tailor your degree to your specific interests, whether they be molecular biology or field-based ecological science

2

Conduct your final year research project within one of our state-of-the-art research laboratories

3

We emphasise employability and have strong links with industry, government and non-governmental organisations (NGOs)

Graduate careers

- Conservation practice
- Education
- Environmental assessment
- Lab or field research
- Masters degrees
- PhD studentships
- Scientific sales
- Scientific publishing

Biology is the scientific exploration of the vast and diverse world of living organisms.

It has expanded enormously within recent years, revealing a wealth of knowledge about ourselves and the millions of organisms on our planet. Learn modern lab techniques, participate in research field trips and develop employability skills. Explore the most recent developments in the field. There has never been a more exciting time to be a biologist.

Popular modules

- Animal Behaviour and Ecology
- Bioinformatics
- Cancer Biology
- Cell Biology
- Climate Change
- Coral Reef Biology
(with optional Indonesia field trip)
- Genome Science
- Human Molecular Genetics
- Microbial Diversity and Biotechnology
- Molecular and Developmental Immunology
- Molecular Biology: Genes, Proteins and Disease
- Molecular Virology
- Plant Biotechnology
- Ecophysiology Field Course (Portugal)
- Plant Biology and Ecosystems

“ I chose to study BSc Biological Sciences at Essex because it's a very broad course with lots of choice for optional modules. The thing I enjoyed most was the field trip to Indonesia, as it was interesting to experience another culture and see the diversity of coral reefs in the Indo-Pacific. ” Matt Wilby, BSc Biological Sciences '15

COURSE	UCAS CODES			TYPICAL ENTRY REQUIREMENTS
	3 years	+ year abroad	+ placement year	
BSc Biological Sciences	C100	C101	C102	<p>A-levels: BCC, including Biology at grade B. Pass required in science practical element of A-level Biology, Chemistry or Physics.</p> <p>GCSE: Mathematics C.</p> <p>IB: 28 points, including Higher Level Biology grade 5 and Standard Level Mathematics grade 4, if not taken at Higher Level.^o</p> <p>^o Please note that Maths in the IB is not required if you have already achieved GCSE Maths at grade C or above.</p> <p>Entry requirements for students studying BTEC qualifications are dependent on units studied. Advice can be provided on an individual basis. The standard required is generally at distinction level.</p>

For additional GCSE and English language requirements, see p54.

Biomedical science

WHY ESSEX?

1

You have the opportunity to spend a year working in an NHS lab

2

Our courses are accredited by the Institute of Biomedical Science

3

We are Top 5 in the UK for student satisfaction – our students love studying with us

Graduate careers

- Biomedical science or clinical science in the NHS
- Dentistry courses
- Education
- Lab research
- Masters degrees
- Medicine courses
- PhD studentship
- Scientific publishing
- Scientific sales

The enemy within – explore how our bodies react to intruders, degeneration, and kinks in the code

Exploration of how the body works is endlessly fascinating.

Biomedical science applies the concepts of biochemistry and cell biology to the study of disease. You learn about the onset, progression, diagnosis and treatment of diseases and are taught by research-active academic experts. You undertake practical work in our state-of-the-art labs, enabling you to gain the skills needed for further study or a career within the profession.

Popular modules

- Anatomy and Physiology
- Cancer Biology
- Cell Biology and Cellular Pathology
- Clinical Biochemistry
- Haematology and Blood Transfusion
- Human Genetics
- Immunity in Health and Disease
- Mechanisms of Neurological Disease
- Medical Microbiology
- Research Project

“ I already knew I wanted to be a Biomedical Scientist, but was uncertain about which area to go into. Fortunately, the modules I studied at Essex covered such a wide range of topics that I was able to discover the one I found most interesting. I then conducted a placement year through the University working in that area and was subsequently offered a full-time graduate position in my training laboratory. ” Holly Jeffreys, BSc Biomedical Science '15

COURSE	UCAS CODES			TYPICAL ENTRY REQUIREMENTS
	3 years	+ year abroad	+ placement year	
BSc Biomedical Science	B990	B995	B999	<p>A-levels: BCC, including Chemistry or Biology and a second science or Mathematics.</p> <p>Pass required in science practical element of A-level Biology, Chemistry or Physics.</p> <p>GCSE: Mathematics C.</p> <p>IB: 28 points, including Higher Level Chemistry or Biology and a second science or Mathematics grade 5, plus Standard Level Mathematics grade 4, if not taken at Higher Level.^o</p> <p>^o Please note that Maths in the IB is not required if you have already achieved GCSE Maths at grade C or above.</p> <p>Entry requirements for students studying BTEC qualifications are dependent on units studied. Advice can be provided on an individual basis. The standard required is generally at distinction level.</p>

For additional GCSE and English language requirements, see p54.

Business and management

WHY ESSEX?

1

We are Top 25 in the UK for research excellence

2

Study in our zero carbon £21m building at our Colchester Campus or in our exceptional facilities at our Southend Campus

3

With staff and students from all over the world you gain a truly international perspective

Graduate careers

- Advertising and marketing
- Consultancy
- Human resources
- Operations management
- Procurement
- Project management
- Relationship management
- Strategic planning

Our brand new building at our Colchester Campus provides space to get creative

Our courses develop a rich understanding of how organisations operate.

We examine what organisations do, how they develop their strategies, and why. At Essex Business School we have a global reputation for our teaching of workplace behaviour, business ethics and marketing. We equip you with the creativity and applied skills necessary for a successful career in an increasingly complex business world. We go far beyond the basics of a business education.

Popular modules

Colchester Campus

- Digital Marketing and Social Media
- Human Resource Management
- International Business Environment
- Management, Innovation and New Technology
- Marketing Management
- Organisational Behaviour

Southend Campus

- Business Creation and Growth
- Business Strategy
- E-Commerce
- Principles of Markets, Marketing and Selling
- Strategic Entrepreneurship
- Supply Chain Management

“ The intellectual environment at Essex challenged my thoughts and contributed to a more reflective and critical way of thinking. This knowledge resulted in being offered an internship this summer, and being accepted to all my top choices of postgraduate studies. ”

Nikoline Torlei, BSc Business Management '15

COURSE	UCAS CODES			TYPICAL ENTRY REQUIREMENTS
	3 years	+ year abroad	+ placement year	
COLCHESTER CAMPUS				
BSc Business Management*	N200	N202	N204	A-levels: BBB. GCSE: Mathematics C. IB: 30 points, including Standard Level Mathematics grade 4, if not taken at Higher Level. ^o ^o Please note that Maths in the IB is not required if you have already achieved GCSE Maths at grade C or above. [†] A-level (or equivalent) in French is required, if French is taken as the major language. Entry requirements for students studying BTEC qualifications are dependent on units studied. Advice can be provided on an individual basis. The standard required is generally at Distinction level.
BSc Management and Marketing	NN25	NNF5	NN2M	
BA Business Management and Modern Languages [†] *		NR19		
BA Business Management with a Modern Language [†] *		N1R9		
BSc Management with Mandarin*		N1T1		
SOUTHEND CAMPUS				
BBA Business Administration	N100	N110	N103	
BSc International Business and Entrepreneurship	N120	N121	N123	

For additional GCSE, English language requirements, see p54. * International and EU applicants can take this course with a foundation year. For information, see p102. ^o Please note this course is not available to native speakers of Mandarin. [†] If you are a native speaker, you will not be offered modules to study in your own language.

There are also online courses in business, management and marketing. Visit our website for more information: www.online.essex.ac.uk.

► www.essex.ac.uk/ug17/business

Computer science

WHY ESSEX?

1

We are home to many of the world's top scientists and engineers in the field of computer science

2

We specialise in areas as diverse as assistive technologies, computer games, artificial intelligence, evolutionary computation, big data and robotics

3

We offer exceptional purpose-built facilities including state-of-the-art labs

Graduate careers

- Banking and finance
- Defence and security
- Entertainment
- Games design
- Management and development of systems, servers and networks
- Motorsport
- Software development
- Telecommunications

Our lives would be unrecognisable without computing.

Information systems make businesses run properly. Computer games are creating imaginary worlds. Simulation enables us to understand how things, people and countries behave. Social media, face recognition, website design, cloud computing, network security, robotics – all of these are fascinating areas of computing, and there is nowhere better to study them. We pride ourselves on our commitment to excellence in both teaching and research.

Popular modules

- Artificial Intelligence
- Computer Game Design and Programming
- Computer Security
- Evolutionary Computation and Genetic Programming
- Mobile Robotics
- Natural Language Engineering
- Web Application Programming
- Software Engineering

“ I applied for an internship with Coderus in my second year. During the interview I realised just how much of an advantage work experience would give me. I carried out functional software testing and visited clients, giving me real insight into how my work contributed to the bigger picture. After graduating I was offered a permanent role, and I’ve never looked back. ”

James Warner, BSc Computer Games '14, Software Developer, Coderus

COURSE	UCAS CODES			TYPICAL ENTRY REQUIREMENTS
	3 years	+ year abroad	+ placement year	
BSc Computer Science*	G400	G401	I101	A-levels: BBB. GCSE: Mathematics C. IB: 30 points, including Standard Level Mathematics grade 4, if not taken at Higher Level. ^o ^o Please note that Maths in the IB is not required if you have already achieved GCSE Maths at grade C or above. BTEC Extended Diploma: DDM (in relevant subject).
BSc Computer Games	G610	G612	I610	
BEng Computer Networks	G420	G421	I120	
BEng Computer Systems Engineering	H650	H651	HP50	
BEng Computers with Electronics*	GH4P	GH4Q	I1H6	BTEC Extended Diploma: DDM (in relevant subject). As G400 above, plus B in GCSE Mathematics (or equivalent).
BSc Information and Communication Technology	GH56	GH5P	I102	
BSc Data Science and Analytics*	I1G3	I1GC	I1GB	
MSci Computer Science (Integrated Masters)	G402 (4 years)		I100	A-levels: AAB. GCSE: Mathematics C. IB: 32 points, including Standard Level Mathematics grade 4, if not taken at Higher Level. ^o ^o Please note that Maths in the IB is not required if you have already achieved GCSE Maths at grade C or above. BTEC Extended Diploma: DDD (in relevant subject).

For additional GCSE and English language requirements, see p54. *You can take this course with a foundation year. For information, see p102.

Criminology

WHY ESSEX?

1 You are taught by staff who conduct world-leading research, and write the textbooks

2 We pioneered sociologically informed approaches to criminology

3 You develop the critical and inventive-thinking skills essential for many graduate jobs

Graduate careers

- Court management
- Journalism
- Paralegal and law
- Police and community safety
- Probation
- Research
- Social work
- Youth work

Art or crime? Making a virtue of vandalism, was Banksy at our Colchester Campus?

What is crime?

Who are the criminals?

These are the types of questions you explore and challenge when studying criminology. The subject demands critical engagement with some of the most pressing issues, decisions and dilemmas facing societies today. You are encouraged to critique ideas and concepts of justice, punishment and social control. But be warned – adopting a criminological imagination will inspire you to see the world in a completely different way.

Popular modules

- British Culture and Society in the 20th Century
- Children and Young People: Criminological Approaches
- Crime, Media and Culture
- Crime, Policy and Social Justice
- Globalisation and Crime
- Introduction to Crime, Law and Society
- Introduction to Media, Culture and Society
- Policing, Punishment and Society
- Sociology of Crime and Control

“I decided to study criminology at Essex because the Department of Sociology was renowned for producing excellent, distinguished research, and I felt that Essex offered the largest potential for my development as a criminologist.

“The module *Crime, Policy and Social Justice* gave me the opportunity to secure a work placement with Essex Probation which was incredibly beneficial for job interviews. I am now a Probation Service Officer, working for The Ministry of Justice. It is thanks to Essex for developing me as a person that I graduated with first-class honours, won the Fuller Bequest Criminology prize and am now in my dream career.”

Tiphonie Bintcliffe, BA Criminology '14, Probation Service Officer, Ministry of Justice

COURSE	UCAS CODES			TYPICAL ENTRY REQUIREMENTS
	3 years	+ year abroad	+ placement year	
BA Criminology*	M900	M901	M904	A-levels: BBB. IB: 30 points. Entry requirements for students studying BTEC qualifications are dependent on units studied. Advice can be provided on an individual basis. The standard required is generally at Distinction level.
BA Criminology with Social Psychology	L3C8	LHC8	L3H8	
BA Sociology and Criminology*	LM39	LMH9	LM38	

For additional GCSE and English language requirements, see p54.

* International and EU applicants can take this course with a foundation year. For information, see p102.

There are also online courses in criminology and criminal justice. Visit our website for more information: www.online.essex.ac.uk

All Criminology courses have been awarded Q-Step Affiliate status, which means you can take a specific path to graduate with enhanced quantitative skills which employers are looking for.

Drama



WHY ESSEX?

1

All of our lecturers come from the theatre profession and continue to have active careers

2

We have a thriving Theatre Arts Society and student company – you can put theory into practice

3

Our Lakeside Theatre on campus is a vibrant creative hub with an international reputation

Graduate careers

- Acting and the cultural industries
- Business and commerce
- Copywriting
- Education
- Journalism
- Magazine editing
- Press relations
- Stage management
- Television production

Staff and students working together in one of our dedicated drama spaces

The study of drama is a true marriage of intellect and emotion.

Through a combination of workshops and seminars, you receive a thorough grounding in classical and contemporary texts, as well as practices that are key to theatre and performance. We teach comedy, tragedy, devised theatre and theatre in education, and are committed to furthering the cause of human rights through drama. At Essex we think theatre can change the world. There is nowhere better to study.

Popular modules

- Creative Performance
- Gender in Performance: Sexual Politics and the Stage
- Independent Practical Theatre Project
- Introduction to Drama
- Introduction to Theatre Making
- Performing Shakespeare
- Restoring the Repertoire
- Text into Action
- Theatre and Education
- Theatre and Human Rights

“ My time at the University would have been a lot harder without the amazing support from all of my lecturers. All of them were working professionals in the theatre world, and so much of their knowledge rubbed off onto all of the students. The huge selection of modules means that you get to choose what you want to do, and the opportunities at Essex are endless. You cannot imagine what you might discover until you give it a try. ” Mitchell Bond, BA Drama '15

COURSE	UCAS CODES		TYPICAL ENTRY REQUIREMENTS
	3 years	+ year abroad	
BA Drama	W401	W402	A-levels: BBB, including one essay-based subject. IB: 30 points, including a Higher Level essay-based subject grade 5. Entry requirements for students studying BTEC qualifications are dependent on units studied. Advice can be provided on an individual basis. The standard required is generally at Distinction level.
BA Drama and Literature	QW24	WQ42	

For additional GCSE and English language requirements, see p54.

All Drama courses can be combined with a placement year. You are responsible for finding your placement, with the support and guidance of the Department of Literature, Film and Theatre Studies, and the Employability and Careers Centre.

Economics



WHY ESSEX?

1

We are Top 5 in the UK for our research excellence – you can learn from the best

2

We give you diverse employment potential and the chance to meet future employers

3

Our vibrant and international student population enables you to make friends and develop your interests

Graduate careers

- Bank of England
- Barclays Capital
- Citigroup
- CRA Consulting
- Deloitte
- Ernst and Young
- Government Economic Service
- Morgan Stanley
- Santander

Financial crisis. Unemployment. Immigration.

Economics is concerned with the material well-being of human societies. At Essex we push the frontiers of accepted wisdom, challenging the standard paradigms of economics. By asking difficult questions we break intellectual boundaries, pioneering new solutions to issues of global concern. With over 90% of our research rated 'world leading' or 'internationally excellent', we are one of the top departments in Europe.

Popular modules

- Applied Economics and Policy
- Economic Development in a Global Perspective
- Economics of the European Union
- Financial Instruments and Capital Markets
- Methods of Economic Analysis
- Microeconomics and Macroeconomics

“ I chose to study at Essex due to its outstanding reputation in economic research, which evidences the high quality of the courses and teaching provided to students. I was lucky enough to secure a role on a Risk Graduate Scheme with Lloyds Banking Group in the middle of my final year at Essex, and am now also studying for a Professional Qualification with the Chartered Banker Institute of Scotland. ” Simona Maslauskaitė, BSc Financial Economics '14

COURSE	UCAS CODES			TYPICAL ENTRY REQUIREMENTS
	3 years	+ year abroad	+ placement year	
BA Economics*	L100	L106	0F66	A-levels: BBB. GCSE: Mathematics B. IB: 30 points, including Standard Level Mathematics grade 5, if not taken at Higher Level. ^o ^o Please note that Maths in the IB is not required if you have already achieved GCSE Maths at grade C or above. [†] A-level (or equivalent) in relevant language required. Entry requirements for students studying BTEC qualifications are dependent on units studied. Advice can be provided on an individual basis. The standard required is generally at Distinction level.
BSc Economics*	L101	L107	0E45	
BA Financial Economics*	L111	L195	5A84	
BSc Financial Economics*	L114	L194	0Q64	
BA Financial Economics and Accounting	L148	L149		
BA International Economics*	L115	L163	9047	
BSc International Economics*	L116	L162	5H18	
BA Management Economics*	L108	L192	9L11	
BSc Management Economics*	L109	L193	5M00	
BA Economic Analysis for Public Policy	L170	L171	L172	
BA Economics with French [†]	L1R1	L1RC		
BA Economics with German [†]	L1R2	L1RF		
BA Economics with Italian [†]	L1R3	L1RH		
BA Economics with Portuguese [†]	L1R5	L1RM		
BA Economics with Spanish [†]	L1R4	L1RK		
BSc Economics with Mathematics	L1G1	L1GC		As L100 above, plus B in A-level Mathematics (or equivalent).
BA History and Economics	LV11	VL11		As L100 above, but C in GCSE Mathematics (or equivalent).

For additional GCSE and English language requirements, see p54.

* International and EU applicants can take this course with a foundation year. For information, see p102.

Electronic engineering



WHY ESSEX?

1 You gain professional IET and BCS accreditation – the basis for chartered engineer status

2 We are home to many of the world's top scientists and engineers in their fields

3 We offer exceptional purpose-built facilities, equipped with the latest hardware and software tools

Graduate careers

- Electronic engineering
- Futurist
- Manufacturing
- Motorsport and aerospace engineering
- Production management
- Systems development
- Telecommunications

What role can robots play in the future of assisted living? Find out in our purpose-built Robot Arena.

Electronics is essential to our modern world of instant global communication.

Today the internet, innovative telecommunications and powerful, inexpensive computing have all been realised through advances in electronics. Our students are the people who make possible what we all use in our daily lives. Join our community of scholars who are leading the way in technological research and development.

Popular modules

- Audio Electronic Systems and Design
- Digital Signal Processing
- Digital Systems Architecture
- Engineering Electromagnetics
- Photonic Networks and Devices
- Telecommunications Networks

“ I enjoyed the wide range of topics included in my degree, which allowed me to discover new areas of interest such as embedded systems design. Immediately after graduating from Essex, I worked for four years at the world-renowned hi-fi speaker manufacturer Bowers & Wilkins, before moving back home to Norway where I started working as a Special Investigator for the Norwegian police at their digital forensics unit. ”

Katrine Molden, BEng Audio Engineering '10

COURSE	UCAS CODES			TYPICAL ENTRY REQUIREMENTS
	3 years	+ year abroad	+ placement year	
BEng Electronic Engineering*	H610	H611	HP10	A-levels: BBB, including Mathematics. [†] GCSE: Science C. IB: 30 points, including Higher Level Mathematics grade 5 and Standard Level Science grade 4. BTEC Extended Diploma: DDM, including Distinction in Further Mathematics for Engineering Technicians.
BEng Telecommunication Engineering*	H641	HQ41	HPK1	
BEng Robotic Engineering*	H615	H616	H617	
MEng Electronic Engineering (Integrated Masters)	H613 (4 years)		H614	A-levels: AAB, including Mathematics. [†] GCSE: Science C. IB: 32 points, including Higher Level Mathematics grade 5 and Standard Level Science grade 4. BTEC Extended Diploma: DDD, including Distinction in Further Mathematics for Engineering Technicians.
MEng Telecommunication Engineering (Integrated Masters)	H642 (4 years)			

For additional GCSE and English language requirements, see p54.

* Subject to approval.

† You can take this course with a foundation year. For information, see p102.

† Please note that we are unable to accept A-level Use of Mathematics in place of A-level Mathematics.

English language and linguistics



WHY ESSEX?

1 You are taught by lecturers who are internationally recognised for their language research

2 Join our diverse community of students from all corners of the globe – we are the world in one place

3 We give you the option to study abroad at a partner university of your choice

Graduate careers

- Advertising
- Education
- Health care
- Journalism
- Learning support
- Management
- Marketing
- Media
- Publishing

English is one of the most important and widely spoken languages in the world.

We look at its structure, its acquisition, and how it is used in contexts like the media, the marketplace, courtrooms and conversations. We are one of the largest and most prestigious language and linguistics departments in the world. Everything starts with language. Language starts at Essex.

Popular modules

- Child Language Acquisition
- Conversation and Social Interaction
- English Phonetics and Phonology
- Meaning and Use
- Psycholinguistics
- Semantics and Pragmatics
- Skills for Linguistics
- Structure of English

“ I would highly recommend the Department of Language and Linguistics to anybody interested in studying language. The staff are incredibly knowledgeable and you really feel like you are being taught by some of the best in the field. The extracurricular activities that Essex offered have also been incredibly beneficial, such as the student newspaper, of which I was an editor in my final year. This has led me to my current role as an Assistant Production Manager for an international publishing company. ” Kirsten Alexander, BA English Language and Linguistics '14

COURSE	UCAS CODES			TYPICAL ENTRY REQUIREMENTS
	3 years	+ year abroad	+ placement year	
BA Linguistics	Q100	Q101	Q103	A-levels: BBB. IB: 30 points. Entry requirements for students studying BTEC qualifications are dependent on units studied. Advice can be provided on an individual basis. The standard required is generally at Distinction level.
BA English Language and Linguistics	QQ13	QQ3D	QQ15	
BA English Language and Teaching English as a Foreign Language	QX31	QXH1	QX51	
BA English Language and Language Development	QQ3C	QB36	QQ3F	
BA English Language and Literature	QQ23	QQ32	QQ35	
BA English Language and History	QV31	QV3C	QV35	
BA Linguistics and Sociology	LQ31	L390	LQ35	

For additional GCSE and English language requirements, see p54.

European studies

WHY ESSEX?

1

You are taught by a team of international experts in a range of subjects

2

Each of our courses enables you to study at an excellent European university of your choice

3

You have the opportunity to study one or more European languages as part of your degree

Graduate careers

- Civil Service
- European Council
- Foreign Office
- Import and export management
- International embassies and agencies
- International finance
- Museums and galleries
- Non-governmental organisations (NGOs)
- Postgraduate research

Carnevale di Venezia is an annual festival in Venice, Italy

The next superpower or a continent in decline? Europe divides opinion.

At Essex we take an innovative, interdisciplinary approach to the study of Europe. We combine subjects from across the humanities and social sciences to investigate and debate a continent that is vitally important to the future of both the UK and the rest of the world. There is no better place to study Europe.

Popular modules

- Art and Ideas
- Europe: Myth and Idea
- From Disunity to Unity: An Introduction to the History of Europe in the 20th Century
- Introduction to European Literature
- Society, Culture and Politics in Europe, 1500-1700
- Terror, Murder and Bloodshed: Civilisation of Renaissance Italy c.1400
- The Enlightenment
- The European Union: Institutions and Policies
- The Law of the European Union
- Three Countries, One Language: Austria, Switzerland and Germany

“ I chose my course because of my passions for foreign cultures, languages, and the European society which I was a part of. In my final year I followed a module in Translation, Interpreting and Subtitling, which I found very practical and interesting and which motivated me to pursue an MA in that area at Essex. ” Beatrice Manole, BA European Studies and Modern Languages '13

COURSE	UCAS CODES	TYPICAL ENTRY REQUIREMENTS
	3 years + year abroad	
BA European Studies	R000	A-levels: BBB. IB: 30 points. † A-level (or equivalent) in French required. *A-level (or equivalent) in French is required, if French is taken as the major language. Entry requirements for students studying BTEC qualifications are dependent on units studied. Advice can be provided on an individual basis. The standard required is generally at Distinction level.
BA European Studies with French [†]	R9R1	
BA European Studies with German	R9R2	
BA European Studies with Italian	R9R3	
BA European Studies with Spanish	R9R4	
BA European Studies with Politics*	R9L2	
BA European Studies and Modern Languages* [†]	R9T9	

For additional GCSE and English language requirements, see p54.

[†] If you are a native speaker, you will not be offered modules to study in your own language.

Film studies



WHY ESSEX?

1

You have access to HD cameras, extensive editing facilities, a film library and a dedicated cinema

2

We offer opportunities for paid work experience in productions, events and festivals

3

Our close links with film, TV and publishing industries give you excellent career prospects

Graduate careers

- Cinema and film festival administration
- Creative industries
- Events coordination
- Film, TV and radio production
- Journalism and writing
- Management
- Screenwriting

We don't just lecture, we make award-winning films and documentaries

In our media-led culture, does film reflect society or shape it?

If you have a natural curiosity for the world, our courses are perfect. We focus on practical production experience informed by insights into a variety of contemporary and historical films, as well as other cultural productions. We offer a unique opportunity to look at films differently, exploring their technical aspects and social significance, while developing industry-specific and transferable skills. Our students have ranked us top in the UK for satisfaction for two years in a row.

Popular modules

- Advanced Film Production
- American Documentary Film and Television
- Cityscapes of Modernism
- Cultural Ideology and Film
- Film and Propaganda
- Film Animation
- Filmmaking
- Hollywood Directors
- Independent Practical Film Project
- Independent Project in Film Studies (History and Theory)
- Introduction to Screenwriting

“ My Essex film degree allowed me to explore different views and analyses of films that I would have never otherwise have encountered, and I met some amazing people along the way. My time at Essex was inspirational, and led me to where I am now, working as a freelance cinematographer in London – a job that allows me to travel the world. ”

Martine Wolff, BA Film Studies '12

COURSE	UCAS CODES		TYPICAL ENTRY REQUIREMENTS
	3 years	+ year abroad	
BA Film Studies	W620	P303	A-levels: BBB, including one essay-based subject. IB: 30 points, including a Higher Level essay-based subject grade 5. BTEC Extended Diploma: DDM (in relevant subject).
BA Film Studies and Literature	QW26	PQ32	
BA Film and Creative Writing	PW38	PWH8	

For additional GCSE and English language requirements, see p54.

All Film studies courses can be combined with a placement year. You are responsible for finding your placement, with the support and guidance of the Department of Literature, Film and Theatre Studies, and the Employability and Careers Centre.

Genetics



WHY ESSEX?

1 Study advanced, medically important topics including cancer biology and genomics

2 Develop essential lab skills in gene manipulation, cloning and bioinformatics

3 Gain valuable research experience by getting involved in cutting-edge project work

Graduate careers

- Education
- Lab research
- Masters degrees
- Medicine and dentistry courses
- PhD studentships
- Science communication
- Scientific publishing
- Scientific sales

Explore the science of life at Essex

Want to find yourself?

The answers are here.

New technologies in genetic manipulation, biotechnology and genomics allow you to explore the intricate proteins that dictate your every characteristic. Our teaching is research-led, with a focus on real-world biomedical applications. From genetically modified crops that could eliminate world hunger, to emerging theories on cancer biology, there's never been a more exciting time to study genetics. At Essex we bring together staff and students from across the world to give you a truly global education.

Popular modules

- Bioinformatics
- Cancer Biology
- Cell Biology
- Genome Science
- Human Molecular Genetics
- Issues in Biomolecular Science
- Microbial Diversity and Biotechnology
- Molecular and Developmental Immunology
- Molecular Virology
- Research Project

“Essex has worldwide recognition for the quality of its research. I enjoyed the range of modules throughout the degree, and I was able to focus on the topics which interested me most. I have just started my PhD in Environmental Biology at the University of Essex for which I have received four years of funding, and after obtaining my doctorate I hope to develop a laboratory-based career in industry.” Karl Skeels, BSc Genetics '15

COURSE	UCAS CODES			TYPICAL ENTRY REQUIREMENTS
	3 years	+ year abroad	+ placement year	
BSc Genetics	C400	C402	C403	<p>A-levels: BCC, including Biology at grade B. Pass required in science practical element of A-level Biology, Chemistry or Physics. GCSE: Mathematics C. IB: 28 points, including Higher Level Biology grade 5 and Standard Level Mathematics grade 4, if not taken at Higher Level.^o</p> <p>^o Please note that Maths in the IB is not required if you have already achieved GCSE Maths at grade C or above. Entry requirements for students studying BTEC qualifications are dependent on units studied. Advice can be provided on an individual basis. The standard required is generally at Distinction level.</p>

For additional GCSE and English language requirements, see p54.

Global studies



WHY ESSEX?

1

Learn to think globally about today's world issues whilst tailoring your degree to suit your unique interests or goals

2

Our students are very happy – we have been voted 2nd in the UK for student satisfaction

3

Essex has the best politics department in the UK and is Top 5 for social science. Work with, and learn from, the experts

Our students and staff staging a walk-out to highlight the difficulties the Government's immigration policies are causing for international students

Global thinking for global problems.

The challenges facing the world today are profoundly international and cut across the usual disciplinary divisions. From the migrant crisis to global warming, contemporary challenges require graduates who bring a global perspective and broad, interdisciplinary skills to the table. Our course is designed for just this purpose. If you are ready to take seriously the challenge of thinking on a global scale, BA Global Studies may be for you.

Key topics

- Future Global Trends
- Globalisation and Crime
- Human Rights and International Organisations
- International Relations: Theories and Approaches
- Introduction to International Relations
- Space, Place, Locality
- Themes in Global History

“ I am from the USA, but came to Essex ten years ago in part because of the remarkable global mix of students, staff, scholarship and activism that is part of the environment here.

"Being at Essex has given me a skillset and a network of contacts that has made it possible to engage with global challenges. My current work addresses the issues associated with recognising the rights of persons with disabilities. Too often, this is the sort of topic that gets investigated only within one's home jurisdiction. But at Essex, we are looking around the world in order to try to advance reform here in the UK and elsewhere.”

Professor Wayne Martin, BA Global Studies coordinator

COURSE	UCAS CODES		TYPICAL ENTRY REQUIREMENTS
	3 years	+ year abroad	
BA Global Studies*	L903	L904	<p>A-levels: BBB, including one essay-based subject.</p> <p>IB: 30 points, including a Higher Level essay-based subject grade 5.</p> <p>Entry requirements for students studying BTEC qualifications are dependent on units studied. Advice can be provided on an individual basis.</p> <p>The standard required is generally at Distinction level.</p>

For additional GCSE and English language requirements, see p54.

* Subject to approval.

History



WHY ESSEX?

1

We offer financial assistance for voluntary work at local museums, archives and heritage sites

2

Our friendly and supportive environment includes a specialist library and experienced advisers

3

We pioneer research and study that will help you develop as a historian

Graduate careers

- Civil Service
- Education
- Heritage, museums
- Journalism and media
- Learning support
- Management
- Marketing
- Non-governmental organisations (NGOs)
- Publishing
- Social work

Essex students making their mark on the Berlin Wall, 1989 – a chapter from our rich political history

Cross boundaries. Tell stories. Make histories.

History is about people, created by people. At Essex, we're interested in history from the grassroots upwards. We explore everything from communities in Essex to witchcraft in Germany, the history of disease to the culture of death; from shopping to sex, slaves to aristocrats; from revolutions in England, China and Russia to the struggle for racial equality in South Africa and the United States.

Popular modules

- Gender in Early Modern England
- In Slavery and Freedom: The African American Experience
- Introduction to United States History
- Making of the Modern World, 1776-1989
- Society, Culture and Politics in Europe, 1500-1750
- South and Southern Africa in the 20th Century
- Stalin's Russia
- The Third Reich
- The Tudors and Stuarts on Film
- Women and Sexuality in 20th Century US History

“ At Essex, you study with people from all over the world with the most diverse range of backgrounds – you have to be ready to have all your views challenged and you never know what you'll discover next. I am now a Curator of Collections and Learning for Colchester and Ipswich Museum Service, where I spend my time unlocking the past through objects. Things that look quite ordinary can tell an extraordinary story and can allow people to make a connection between themselves and someone who lived hundreds of years ago. ” Eleanor Root, BA History '07

COURSE	UCAS CODES		TYPICAL ENTRY REQUIREMENTS
	3 years	+ year abroad	
BA History*	V100	V101	A-levels: BBB. IB: 30 points. † A-level (or equivalent) in French is required, if French is taken as the major language. Entry requirements for students studying BTEC qualifications are dependent on units studied. Advice can be provided on an individual basis. The standard required is generally at Distinction level.
BA Modern History*	V140	V149	
BA Social and Cultural History	V320	V324	
BA American History*	VT27	VT2R	
BA Global History	V145	V146	
BA History with Film Studies	V1W6	V1WP	
BA History and Film Studies	VW16	V1WQ	
BA History with Human Rights	V1L2	V1LF	
BA History and Criminology	MV91	MV9C	
BA History and Literature*	QV21	VQ12	
BA History and Sociology	LV31	LV3C	
BA Modern History and International Relations	VL12	VL1F	
BA Modern History and Politics	LV21	LV2C	
BA History with Modern Languages†*		V1R9	

For additional GCSE and English language requirements, see p54. * International and EU applicants can take this course with a foundation year. For information, see p102. All History courses can be combined with a placement year. You are responsible for finding your placement, with the support and guidance of the History Department and the Employability and Careers Centre. † If you are a native speaker, you will not be offered modules to study in your own language.

Hotel management

WHY ESSEX?

1 We offer a unique education – we are the UK's first and only hotel school based in a working hotel

2 Two years is all it will take to complete your fast-track Hotel Management degree

3 You gain invaluable professional experience in our stunning four-star hotel, Wivenhoe House

Your career

By studying with us, you gain a degree that is respected throughout the hospitality industry. Recent graduates have gone straight into employment in roles such as:

- Assistant Executive Lounge Manager
- Assistant General Manager
- Events Coordinator
- Head Housekeeper
- Reservations Manager
- Restaurant Manager

Our on-site Wivenhoe House is run by students and professionals together

The Edge Hotel School is changing the way people think about hospitality and education.

The hospitality industry contributes £40bn to the UK economy. We equip you with the professional and managerial skills, as well as the academic theory, to succeed in a career in hotel management. The Edge Hotel School offers hands-on experience in a unique, fast-track, two-year intensive course that reflects life in the hospitality industry.

What skills and experience will I gain?

- An integrated learning experience
- Learn to be an innovative, professional leader for the hospitality industry
- Engagement with every department in a working hotel
- An extensive interaction with reputable industry links
- Knowledge of business management, including marketing and finance
- Organisation and time management skills
- Presentation and enhanced communication skills
- An understanding of operational planning, including events

“After finishing my course I was over the moon to go straight into employment as an assistant executive lounge manager at London Marriott Hotel, Grosvenor Square. It's where our elite guests, those who stay with Marriott on a regular basis, can enjoy first-class facilities, from breakfast to business space, to canapés in the evening. My studies changed the way I look at things and I have so much knowledge that I am now putting to good use.”

Luke Teeling, BA Hotel Management '14

COURSE	UCAS CODES	TYPICAL ENTRY REQUIREMENTS
BA Hotel Management (24 months)	N863	A Levels: CCC. BTEC Extended Diploma: MMM. IB: 24 points, including Standard Level Mathematics and English grade 4. GCSE: Five GCSEs at grade C or above, including Mathematics and English.
FdA Hotel Management (16 months)	N86G	A Levels: CC. BTEC Extended Diploma: MPP. GCSE: Five GCSEs at grade C or above, including Mathematics and English.
BA Hotel Management (progression award) (8 months)	NV62	Subject to satisfactory academic and practical assessment on the FdA Hotel Management course, undergraduates can progress to complete the final eight months of the BA course.

Please note that the UCAS institution code for the Edge Hotel School is E41. You can also apply directly to the School. The Edge Hotel School accepts a wide range of qualifications – get in touch with the School's Admissions Team to find out more. Subject to validation, an Events Management degree course is due to be launched at the Edge Hotel School for 2017 entry – for full details please contact the Edge Hotel School directly or visit www.edgehotelschool.ac.uk for up-to-date course information.

Human rights



WHY ESSEX?

1 Our lecturers are renowned experts in human rights and hold prestigious UN appointments

2 Gain experience in the field through opportunities such as our Human Rights Clinic

3 We have an active Human Rights Society and a comprehensive programme of events

Graduate careers

- Amnesty International
- Charity and voluntary work
- Education
- Government
- Human rights
- Law
- Public relations
- United Nations

Students lead a bare-foot walk to show solidarity with the world's refugees

Human rights have no borders or boundaries. They are the global language of the world.

Studying human rights develops the skills and confidence to advocate for individual and community rights, social justice and social change. Our approach is interdisciplinary, with the theory and practice of human rights embedded in our work. Join our thriving community of expert staff, students and graduates who have global impact.

Popular modules

- European Human Rights Law
- Foundations of Human Rights
- Human Rights Institutions: International and Regional Organisations
- Issues and Methods in Human Rights
- Language Rights
- The Protection of Human Rights in the UK

“Through my human rights modules I found that I was really passionate about law and wanted to pursue a career in this area. My undergraduate course helped steer me into this direction and for that I am very grateful; I am now studying a postgraduate law degree.”
Emma Santos Clewley, BA Latin American Studies with Human Rights '15

COURSE	UCAS CODES			TYPICAL ENTRY REQUIREMENTS
	3 years	+ year abroad	+ placement year	
BA History with Human Rights	V1L2	V1LF		Please see the respective subject pages for the typical entry requirements for these courses.
BA Latin American Studies with Human Rights		T7M9		
LLB Law with Human Rights	MM20	MM21	MM22	
BA Philosophy with Human Rights	V5M9	V5MX		
BA Sociology with Human Rights	L3M9	LMJ9		
BA Politics with Human Rights	L2M9	LFM9		

For additional GCSE and English language requirements, see p54.

International Academy

Four-year degrees



WHY ESSEX?

1

Our international students benefit from a single visa for all four years of study

2

Our integrated foundation year provides a seamless transition to your chosen department

3

We equip you with the necessary knowledge and skills to succeed at Essex and beyond

Graduate careers

- Civil Service
- European Council
- Foreign Office
- Import and export management
- International embassies and agencies
- International finance
- Museums and galleries
- Non-governmental organisations (NGOs)
- Postgraduate research

Our courses are designed for international, European and UK students who have not yet reached the required academic or English language level for undergraduate study.

We develop your subject knowledge as well as your academic and language skills. Our four-year degrees include a foundation year, known as Year Zero, followed by a further three years, leading to a Bachelors degree. You can start in either October or January.

COURSE	UCAS CODES	TYPICAL ENTRY REQUIREMENTS
	4 years	
BSc Accounting	N401 ¹	<p>A-levels: DDD, or equivalent in UCAS tariff points, to include 2 full A-levels.</p> <p>¹ GCSE: Mathematics C (or equivalent).</p> <p>² GCSE: Mathematics and Science C (or equivalent).</p> <p>English language: IELTS 5.5, with a minimum of 5.5 in each component (or equivalent).</p> <p>If you possess non-UK qualifications, we will evaluate the equivalent level on receiving your application. If you have any questions about your qualifications, please email us.</p> <p>E admit@essex.ac.uk</p>
BSc Accounting and Finance	NN43 ¹	
BSc Accounting and Management	NN42 ¹	
BSc Accounting with Economics	N4L1 ¹	
BA American History	VT2T	
BA Art History	V350	
BSc Business Management	N201 ¹	
BA Communications and Digital Culture	P300	
BSc Computer Science*	G403 ¹	
BEng Computers with Electronics*	GH46 ¹	
BA Criminology	M903	
BSc Data Science and Analytics*	I1GF ¹	
BA/BSc Economics	L102/L103 ¹	
BEng Electronic Engineering**	H61P ²	
BA English Literature	Q320	
BSc Finance	N301 ¹	
BA/BSc Financial Economics	L118/L117 ¹	
BSc Financial Management	N341 ¹	
BA History	V102	
BA History and Literature	QV2C	
BA/BSc International Economics	L160/L161 ¹	
BA International Relations	L250	
LLB Law	M101	
BA Liberal Arts	LQV0	
BA Literature and Art History	QV2H	
BA/BSc Management Economics	L190/L191 ¹	
BA Modern History	V144	
BA Philosophy	V502	
BA Philosophy and History	VV51	
BA Philosophy and Literature	VQ52	
BA Politics	L202	
BA Sociology	L304	
BA Sociology and Criminology	LMHX	
BEng Telecommunication Engineering**	HP41 ²	

For additional GCSE and English language requirements, see p54.

* Open to UK as well as international and EU students. Please note that most of our courses have start dates in both October and January.

** October entry only.

International Year One in Business



WHY ESSEX?

1 Successful completion guarantees entry to the second year of Essex Business School courses

2 Combine foundation and first-year study to earn your Bachelors degree in three years

3 We offer dedicated one-to-one support to help you succeed and achieve your potential

Study an intensive first year and complete your degree by the third year

Our International Year One is for international and European students who want to gain an undergraduate degree within three years.

Our course follows a curriculum equivalent to first-year students, and allows you to progress directly to the second year of a relevant course in accounting, finance, management or marketing at Essex. We also focus on developing your English proficiency, academic literacy and employability skills.

Our modules

- Academic Literacy
- Applied Business Communication
- Introduction to Accounting
- Introduction to Economics
- Introduction to Finance
- Introduction to Management and Marketing
- Quantitative Methods and Financial Mathematics

“ At first I thought it would be difficult to adapt to life at university, living away from home, but everyone was so friendly and helpful that I soon settled in. The lecturers have been excellent and really helped me focus on my studies – my fondest memory so far was being invited to the Dean’s List gathering as I won the award for gaining the highest marks. It was great to know that all the hard work and sacrifice paid off. ”

Tun Nur Aderina Tun Yazli, BSc Financial Economics

COURSE	UCAS CODES	TYPICAL ENTRY REQUIREMENTS
	1 year	
International Year One in Business	NN14	<p>A good academic record at senior secondary/high school or junior college. If you have taken A-levels, International Baccalaureate, or similar examinations, but have not achieved the grades required for direct entry to the first year of our courses, you may also be eligible to apply.^o</p> <p>^o Please note that Maths in the IB is not required if you have already achieved GCSE Maths at grade C or above.</p> <p>GCSE: Mathematics C.</p> <p>English language: IELTS 5.5, with a minimum of 5.0 in writing and 4.0 in all other components (or equivalent). If you have any questions about your qualifications, please email us.</p> <p>E iaapply@essex.ac.uk</p>

For additional GCSE and English language requirements, see p54.

You can apply for this course via UCAS or directly to the International Academy at Essex. For further information, please visit our website or email us. **E** iaapply@essex.ac.uk

International Foundation Programme



WHY ESSEX?

1

Successful completion of the programme guarantees entry to the relevant degree at Essex

2

We offer flexible start dates – you can start in either October or January

3

Our course gives you a sound academic start in your chosen subject area

An authentic experience of living in the UK as well as learning

Our International Foundation Programme enables international and European students to reach the required academic level for undergraduate study.

As well as improving your English and academic skills, you gain the necessary experience of living and learning in a university environment. We nurture your critical thinking and independent study skills to ensure you succeed in your chosen field.

What can I study afterwards?

Our International Foundation Programme is designed to help you to enter your chosen degree at the University of Essex. You can choose from the following subject areas:

- Accounting
- Art history
- Banking and finance
- Computer science
- Criminology
- Drama
- Economics
- Electronics*
- Entrepreneurship and business
- Film studies
- Finance
- History
- International relations
- Law
- Liberal arts
- Literature
- Management and marketing
- Mathematics*
- Philosophy
- Politics
- Sociology
- Telecommunication engineering*

Once you have chosen your subject area, you will be placed on the best pathway for your course.

* October entry only.

“ I chose to study at Essex because I knew it was one of the best universities in the UK. The International Foundation Programme is structured in a way that suited what I wanted to learn and gave me the tools I needed to feel confident in my abilities. Being a member of the Essex community has given me a strong sense of independence and I feel ready to tackle the challenges of my undergraduate course. ” Ogechukwu Onyia, International Foundation Programme '13

COURSE	TYPICAL ENTRY REQUIREMENTS
International Foundation Programme	A good academic record at senior secondary/high school or junior college. If you have taken A-levels, International Baccalaureate or similar examinations, but have not achieved the grades required for direct entry to the first year of our courses, you may also be eligible to apply. English language: IELTS 5.0, with a minimum of 4.0 in each component (or equivalent).

For additional GCSE and English language requirements, see p54. You should apply directly to the International Academy at Essex. Please note that most of our courses have start dates in both October and January. For further information, please visit our website or email us. [E iaapply@essex.ac.uk](mailto:iaapply@essex.ac.uk)

Journalism

WHY ESSEX?

1

Create and broadcast your own online content, radio and TV programmes

2

Build a portfolio of work across media formats to showcase your talent and versatility

3

You will gain the National Council for the Training of Journalists (NCTJ) 'Diploma in Journalism'

Graduate careers

- Broadcast journalist
- Correspondent
- Editor
- Freelance journalist
- Producer
- Reporter

Traditional journalism is changing radically – join us and help shape its future

This groundbreaking course reflects the changes that have transformed journalism in recent years.

You learn from respected former BBC News Editor, Jonathan Baker, exploring what it means to work in today's multimedia newsrooms while gaining the skills and qualifications to thrive there. If you are curious, challenging and committed to keeping yourself and others informed about the world we live in, this is the course for you.

Popular modules

- Broadcast Journalism
- Media Law
- Multimedia Journalism
- Multimedia Production
- Practical Journalism
- Principles of Journalism
- Public Affairs
- Research and Data Handling

“Journalism is at a crossroads. Phone hacking and other scandals have brought press ethics, morality and regulation back into focus. Social media has put the machinery for creating and publishing news into the hands of the public, and raised questions about the role of professional journalists. Digital and other technical advances have increased the number of platforms for news and means of presenting it, and forced media organisations to take a multimedia approach. These are all challenges, but they carry enormous opportunities with them too.

“Our course helps you make sense of this complicated and rapidly changing world, and equips you to take your place in it, as a curious, discerning journalist, with the skills and qualifications to make a career in whatever medium or subject specialism you choose.”

Jonathan Baker, Professor of Journalism

COURSE	UCAS CODES		TYPICAL ENTRY REQUIREMENTS
	3 years	+ placement year	
BA Multimedia Journalism	P500	P501	A-levels: BBB, including one essay-based subject. IB: 30 points, including a Higher Level essay-based subject grade 5.

For additional GCSE and English language requirements, see p54.

Non-native English speakers require IELTS 7.0 with a minimum of 5.5 in each component.

BA Multimedia Journalism can be combined with a placement year. You are responsible for finding your placement, with the support and guidance of the Department of Literature, Film and Theatre Studies, and the Employability and Careers Centre.

Latin American studies

WHY ESSEX?

1

We house the internationally important collection of Latin American art, ESCALA

2

Spend a year studying in Latin America, developing your Spanish or Portuguese

3

You can build a course to suit your interests in Latin America by choosing from a range of modules

Graduate careers

- Arts management
- Civil Service
- Human rights
- International banking
- International development
- Journalism
- Non-governmental organisations (NGOs)
- Tourism
- Translation and interpreting

'Quisiera tener mis tierras propia', Juripucio, Jujuy, Argentina (undated) © Martin Weber – Essex hosts the largest public collection of Latin American art in Europe

Latin America is at the heart of issues of global importance.

As well as producing some of the world's most celebrated literature, art and music, the region's economic, social and environmental impact is internationally significant. At Essex, you deepen your knowledge of Latin America while gaining the skills and experience to make a difference when you graduate. There is nowhere better to immerse yourself in the study of Latin America.

Popular modules

- Anthropology of Latin America
- Dictators and Politics
- Introduction to Contemporary Latin America
- Introduction to Latin American History
- Latin American Art and Architecture
- Latin American Politics
- Slavery and Plantation Societies in 19th Century Latin America
- The Enlightenment
- The Making of Modern Brazil

“ The Latin American Studies course allowed me to study different subjects whilst also incorporating my interests in different cultures. In my second year I took an anthropology module which really challenged my perceptions of indigenous cultures and anthropology as a field. Our teachers really inspired us, and were very enthusiastic about the topics they were teaching. ” Emma Santos Clewley, BA Latin American Studies with Human Rights '15

COURSE	UCAS CODES	TYPICAL ENTRY REQUIREMENTS
	3 years + year abroad	
BA Latin American Studies	T711	A-levels: BBB.
BA Latin American Studies with Business Management	T7N2	IB: 30 points. Entry requirements for students studying BTEC qualifications are dependent on units studied. Advice can be provided on an individual basis.
BA Latin American Studies with Human Rights	T7M9	The standard required is generally at Distinction level.

For additional GCSE and English language requirements, see p54.

Law



WHY ESSEX?

1 Our lecturers work with the UN, the UK government, and with EU and foreign governments

2 You gain work experience advising real clients through opportunities such as the Essex Law Clinic

3 You engage in mooting and negotiation – your chance to put knowledge into practice

Graduate careers

- Civil Service
- EU Commission
- Government Legal Service
- In-house counsel for banks and city firms
- Local authority lawyers
- Non-governmental organisations (NGOs)
- Police
- Solicitor or barrister

"A very famous university" – former South African president Nelson Mandela visiting our Colchester Campus

How is society regulated? How can you change it?

Studying law enables you to understand and explore answers to these questions. Law affects all our relationships: with other people, with shops, banks and companies, and with governments. We teach the law that matters, with a concern for the demands of justice and commerce. You learn to analyse the law and apply it in context – law never operates in a vacuum. And law needs good lawyers.

Popular modules

- Animal Welfare Law
- Banking Law
- Company Law
- Cybercrime
- Investigating Miscarriages of Justice
- Medicine and the Law
- Music Law
- Public International Law
- UK Human Rights

“ I decided to study at Essex because of the world-renowned Human Rights Centre and the ability to combine a qualifying law degree with a focus on human rights. The encouragement I received from academics and fellow students really helped me develop a passion for my studies and confidence in my abilities. I am now studying for a BCL at the University of Oxford, which is a popular graduate course among law students from all around the world. I wouldn't be here without my degree from Essex. ” Karin Frodé, LLB Law and Human Rights '14

COURSE	UCAS CODES			TYPICAL ENTRY REQUIREMENTS
	3-4 years	+ year abroad	+ placement year	
LLB Law*	M100	M120	M107	A-levels: BBB, including one essay-based subject. IB: 30 points, including a Higher Level essay-based subject grade 5. † With A in A-level French, 6 in Higher Level IB French or 12 in French in the French Baccalaureate. Entry requirements for students studying BTEC qualifications are dependent on units studied. Advice can be provided on an individual basis. The standard required is generally at Distinction level.
LLB English and French Laws (Maîtrise)*	M122 (4 years)			
LLB Law with Human Rights	MM20 (3 years)	MM21	MM22	
LLB Law with Philosophy	MV16 (3 years)	MV18	MV19	
LLB Law with Politics	ML16 (3 years)	ML14	ML15	
LLB Law with Business*	MN00	MN01	MN02	An Upper Second class undergraduate degree.
	2 years			
LLB Law (Senior Status)	M103			

For additional GCSE and English language requirements, see p54.

* Subject to approval.

† Two years spent at Essex and two years spent at one of our three partner institutions in France.

* Also available with a foundation year. For more information see p102.

There are also online courses in Law. Visit our website for more information: www.online.essex.ac.uk

Liberal arts



WHY ESSEX?

1 Study at one of the UK's leading universities for social science and the best for politics

2 Create a course that has real academic breadth, tailored to your passions

3 Our students are among the most versatile, highly-sought and intellectually imaginative graduates

Graduate careers

- Activism
- Charity sector
- Education
- Finance
- Government
- Librarianship
- Management
- Media and journalism
- Postgraduate research
- Publishing

Mural of a scene from *Brief Encounter* in Leigh-on-Sea, near our Southend campus. How commercial and independent films interpret human relationships is just one of the exciting topics waiting to be explored.

The subjects we study at school are tiny pieces of an infinite jigsaw.

Taken in isolation, history, science, maths, geography, art and literature only reveal a small part of the overall picture. Liberal arts takes a different approach, drawing on multiple disciplines in order to discover new knowledge and reach a deeper understanding of the worlds we inhabit. If your interests are broad and you don't want to confine yourself to studying a single subject, liberal arts is the perfect course for you.

Popular modules

- Crime and Punishment
- Dangerous Ideas: Essays and Manifestos as Social Criticism
- Death, God and the Meaning of Life
- International Relations
- Italian Renaissance Art
- Language, Mind and Communication
- The Body and Modern Society
- The Enlightenment
- The World in Question: The Social, Political, and Psychological Legacies of The Enlightenment
- World Cinema

“ I chose my undergraduate course because it gave me the opportunity to study a variety of modules from different disciplines, rather than having to choose just one. I was not sure at the time what I wanted to specialise in, so this was perfect for me. The Centre staff are some of the friendliest, most helpful and genuine people I have ever met. It is definitely the best humanities department in the UK, and I am so happy that I chose to study there. ”

Kristin Aakvik, BA Humanities (renamed Liberal Arts) '14

COURSE	UCAS CODES		TYPICAL ENTRY REQUIREMENTS
	3 years	+ year abroad	
BA Liberal Arts	V900	QV00	<p>A-levels: BBB, including one essay-based subject.</p> <p>IB: 30 points, including a Higher Level essay-based subject grade 5.</p> <p>Entry requirements for students studying BTEC qualifications are dependent on units studied. Advice can be provided on an individual basis. The standard required is generally at Distinction level.</p>

For additional GCSE and English language requirements, see p54.

International and EU applicants can take this course with a foundation year. For information, see p102.

Literature and creative writing



WHY ESSEX?

1 You can respond both critically and artistically to your studies in our unique literary conservatoire

2 Our courses are taught by leading academics and writers

3 We encourage innovation, experimentation, originality, and invention in writing and thinking

Graduate careers

- Business development
- Editing
- Journalism
- Management
- Publishing
- Radio
- Teaching
- Theatre
- Writing

Not all learning happens in the classroom – take your thoughts outdoors in our beautiful Wivenhoe Park, or study the increasingly popular genre of nature writing

Vibrant. Experimental. Supportive.

Literature at Essex has a great tradition of nurturing writers and thinkers.

From past giants such as Robert Lowell and Ted Berrigan who have shaped literature as we know it, to prize-winning contemporary writers such as Ben Okri, Essex has always attracted people who are at the heart of defining and redefining literature. Come and study with us and find your own voice.

Popular modules

- Arthurian Literature
- Cityscapes of Modernism
- Contemporary Texts and Contexts
- Creative Writing: Oulipo and the Avant Garde
- Myth and the Creative Process
- Post-War United States Fiction
- Shakespeare and the History Play
- United States and Caribbean Literatures

“After graduating from Essex I began writing novels and my debut, *The Beauty That Flows Past*, won a literary prize in Norway, which was a massive achievement for me and a great honour.

“The BA Creative Writing was an important stepping stone towards becoming a published writer. I had the privilege of being taught by talented and inspiring professors, and I am grateful for all their encouragement and guidance during my three years at Essex.”

Ida Løkås, BA Creative Writing '09

COURSE	UCAS CODES		TYPICAL ENTRY REQUIREMENTS
	3 years	+ year abroad	
BA English Literature*	Q300	Q321	A-levels: BBB, including one essay-based subject. IB: 30 points, including a Higher Level essay-based subject grade 5. Entry requirements for students studying BTEC qualifications are dependent on units studied. Advice can be provided on an individual basis. The standard required is generally at Distinction level
BA English and United States Literature	T720	QT37	
BA Creative Writing	W800	W801	
BA Literature and Sociology	LQ32	QL23	
BA Literature and Creative Writing	QW30	QW31	

For additional GCSE, English language and modern language requirements, see p54.

* International and EU applicants can take this course with a foundation year. For information, see p102.

All Literature courses can be combined with a placement year. You are responsible for finding your placement, with the support and guidance of the Department of Literature, Film and Theatre Studies, and the Employability and Careers Centre.

Marine biology



WHY ESSEX?

1 Our underwater lectures give you an exciting, unique and engaging educational experience

2 You will receive SCUBA training and conduct underwater research on our coral reef field trip

3 Use our on-site aquarium facilities and Marine Biology Field Centre for your research projects

Graduate careers

- Field research
- Government and environmental authorities
- Industry and business consultancy
- Lab research
- Local and international marine and environmental charity work
- Science education

Make the coral reef your classroom with underwater lectures in the Coral Triangle

Explore the fascinating complexity of the natural world.

Investigate the effects of environmental change on biodiversity with field trips to some of the world's most significant coral reefs, and develop your skills in the latest surveying techniques. You can volunteer with our Coral Reef Research Unit and join our Marine Conservation Society.

Popular modules

- Animal Behaviour and Ecology
- Conservation Management and Practice
- Coral Reef Ecology Field Trip: Indonesia
- Estuarine and Coastal Ecology Field Course
- Fisheries Ecology
- Marine Biodiversity
- Marine Research Skills Field Trip: Plymouth
- Marine Vertebrates
- Oceanography Field Trip: Greece
- Pollution: Impacts and Management

“ I was lucky enough to go to Indonesia and Thailand for two of my modules. I am currently working for the Essex Wildlife Trust, and all of the knowledge I gained from local trips and lectures from experts has helped me tremendously. ” Emily Godfrey, MMB Tropical Marine Biology '15

COURSE	UCAS CODES			TYPICAL ENTRY REQUIREMENTS
	3 years	+ year abroad	+ placement year	
BSc Marine Biology	C164	CC60	CC64	<p>A-levels: BCC, including Biology at grade B. Pass required in science practical element of A-level Biology, Chemistry or Physics.</p> <p>GCSE: Mathematics C.</p> <p>IB: 28 points, including Higher Level Biology grade 5 and Standard Level Mathematics grade 4, if not taken at Higher Level.^o</p> <p>^o Please note that Maths in the IB is not required if you have already achieved GCSE Maths at grade C or above.</p> <p>Entry requirements for students studying BTEC qualifications are dependent on units studied. Advice can be provided on an individual basis. The standard required is generally at distinction level.</p>
MMarBiol Marine Biology (Integrated Masters)	C160 (4 years)			<p>A-levels: ABB, including Biology and a second science or Mathematics.</p> <p>Pass required in science practical element of A-level Biology, Chemistry or Physics.</p> <p>GCSE: Mathematics C.</p> <p>IB: 32 points, including Higher Level Biology and a second science or Mathematics grade 5, plus Standard Level Mathematics grade 4, if not taken at Higher Level.^o</p> <p>^o Please note that Maths in the IB is not required if you have already achieved GCSE Maths at grade C or above.</p> <p>Entry requirements for students studying BTEC qualifications are dependent on units studied. Advice can be provided on an individual basis. The standard required is generally at distinction level.</p>

For additional GCSE and English language requirements, see p54.

Marketing



WHY ESSEX?

1

We work closely with marketers and entrepreneurs to develop professional leaders of the future

2

You'll write a business plan using your own new venture as a basis

3

Learn about the role of entrepreneurship and study enterprising individuals

Graduate careers

- Advertising and marketing
- Business creation
- Creative and digital industries
- Entrepreneurship
- Financial services
- International project management
- Management
- PR and media
- Supply chain management

BSc Marketing students take their work to independent café *Utopia*, just down the road from our Southend Campus

Marketing requires innovation, initiative and imagination.

Marketers and entrepreneurs are committed and creative, as well as business-focused and able to demonstrate a thorough understanding of key business drivers. With our focus on leading-edge marketing, critical thinking and leadership, Essex Business School produces graduates who manage entrepreneurial activities in organisations of all sizes, or apply their skills to their own new ventures.

Popular modules

Colchester Campus

- Brand Management
- Consumer Behaviour
- Corporate Marketing
- Digital Marketing and Social Media
- Management, Innovation and New Technology
- Marketing Management
- Organisational Behaviour

Southend Campus

- Business Creation and Growth
- Business Strategy
- Business to Business Marketing
- Consumer Behaviour
- E-Commerce
- International Business Environment
- Managing Innovation
- Supply Chain Management

“Before university, I was quite unsure about what I wanted to do, but studying so many different modules over three years showed me that I wanted to go into the marketing side of a business – and I haven’t looked back since. I secured a direct marketing role straight after graduation, and currently work in a recruitment agency based in Central London.”

Srija Neupane, BSc Management and Marketing '14

COURSE	UCAS CODES			TYPICAL ENTRY REQUIREMENTS
	3 years	+ year abroad	+ placement year	
COLCHESTER CAMPUS				A-levels: BBB. GCSE: Mathematics C. IB: 30 points, including Standard Level Mathematics grade 4, if not taken at Higher Level. ^o ^o Please note that Maths in the IB is not required if you have already achieved GCSE Maths at grade C or above. Entry requirements for students studying BTEC qualifications are dependent on units studied. Advice can be provided on an individual basis. The standard required is generally at Distinction level.
BSc Management and Marketing	NN25	NNF5	NN2M	
SOUTHEND CAMPUS				
BSc Marketing	N501	N502	N504	

For additional GCSE and English language requirements, see p54.

There are also online courses in business, management and marketing. Visit our website for more information: www.online.essex.ac.uk

Mathematics

WHY ESSEX?

1 As well as being world-class academics and researchers, we are award-winning teachers

2 We go the extra mile to make sure you succeed both during and after your time with us

3 We coordinate maths support for other UK universities – everyone wants to work with us

Graduate careers

- Accountant
- Actuary
- Economist
- Financial analyst
- Risk assessor
- Statistician

Maths is the study of patterns and structure in the world around us.

From exploring the economic impact of the social networking of cows to advancing our understanding of crowd behaviour by modelling a zombie apocalypse. From identifying key factors in the regeneration of recession-hit towns to being at the centre of our University's pioneering work on big data. We are expert statisticians who undertake prestigious, ground-breaking research, and are at the heart of a revolution in maths teaching.

Popular modules

- Calculus
- Complex Variables
- Cryptography and Codes
- Graph Theory
- Linear Algebra
- Mathematical Methods
- Optimisation
- Statistics

“ Mathematics and economics were two subjects I enjoyed at school, and Essex offered a course that combined both. Throughout the whole course the two departments were very helpful and always made time for me if I needed to discuss anything. I worked for the Royal Bank of Scotland for a year immediately after graduation, and am currently on a graduate scheme at KPMG. ” James Stephens, BSc Mathematics with Economics '14

COURSE	UCAS CODES			TYPICAL ENTRY REQUIREMENTS
	3 years	+ year abroad	+ placement year	
BSc Mathematics	G100	G102	G103	A-levels: BBB, including Mathematics. Please note that we are unable to accept A-level Use of Mathematics in place of A-level Mathematics. IB: 30 points, including Higher Level Mathematics grade 5. *Also requires A-level Physics grade B or IB Higher Level Physics grade 5 (or equivalent).
BSc Mathematics with Physics*	G1F3	GCF3	G1F4°	
BSc Mathematics with Computing	G1GK	G1G4	G1IK	
BSc Mathematics and Statistics	9K12	5B43	9K13	
BSc Economics and Mathematics	LG11	LG1C	L1G2°	
BSc Finance and Mathematics†	GN13	GN1H	GN15°	

For additional GCSE and English language requirements, see p54.

† Students can transfer to year two of BSc Actuarial Science from this course, subject to satisfactory progress.

° Subject to approval.

Modern languages

WHY ESSEX?

1

If you study a language from scratch via our intensive route, we pay for you to attend a four-week summer school in the country where that language is spoken

2

Our innovative courses allow you to study abroad and undertake a work placement all in the same year

3

Gain skills in translation, interpreting and subtitling, using the latest technology in our multimedia labs

Graduate careers

- Education
- Entertainment
- International business
- International finance
- Journalism
- Management
- Media
- Tourism
- Translation

Develop your translation skills in our EU- and UN-standard interpreting booths

Studying languages opens the door to a whole new world.

At Essex we give you access to other countries, people and cultures, as well as excellent employment prospects. Not only can you reach Mastery level without any prior knowledge, you can also study several languages simultaneously including Mandarin Chinese. You can choose from a variety of study abroad options including internships and work placement opportunities, language teaching assistantships with the British Council, and Erasmus exchange programmes. Our unique courses allow you to develop your language abilities, cultural awareness, and translation, interpreting and subtitling skills.

Popular modules

- Brazil in Focus: Business, Culture and Society
- French Cinema and Culture
- From The Caves to Modern Graffiti: A Visual History of the Spanish Language
- Intensive Initial German/Italian/Spanish/Portuguese
- La Dolce Italia: A Journey Across Enduring Italian Traditions
- Spanish and Latin American Art, Film and Music
- Three Countries, One Language: Austria, Switzerland and Germany
- Translation, Interpreting and Subtitling Skills

COURSE	UCAS CODES		TYPICAL ENTRY REQUIREMENTS
	3 years	+ year abroad	
BA Modern Languages		R900	A-levels: BBB. IB: 30 points. A-level (or equivalent) in French is required, if French is taken as the major language. * A-level (or equivalent) in French is required. Entry requirements for students studying BTEC qualifications are dependent on units studied. Advice can be provided on an individual basis. The standard required is generally at Distinction level.
BA Modern Languages with Film Production		R800	
BA Language Studies	Q140		
BA French Studies and Modern Languages*		RR19	
BA German Studies and Modern Languages		RR9F	
BA Italian Studies and Modern Languages		RR38	
BA Portuguese Studies and Modern Languages		RR58	
BA Spanish Studies and Modern Languages		RR49	
BA Modern Languages and English Language		RQ93	
BA Modern Languages and Linguistics		RQ91	
BA Modern Languages and Teaching English as a Foreign Language		RX91	
BA Spanish, Portuguese and Brazilian Studies		RT97	
BA Modern Languages with Latin American Studies		R8T7	
BA Spanish Studies with Latin American Studies		R4T7	
BA Philosophy and Modern Languages		VR59	
BA Philosophy with Modern Languages		V5R9	
BA Politics and Modern Languages		LR29	
BA International Relations and Modern Languages		LRF9	
BA Literature and Modern Languages		QRF9	
BA Literature with Modern Languages		Q2R9	

For additional GCSE and English language requirements, see p54.

If you are a native speaker, you will not be offered modules to study your own language.

Nursing:

Adult nursing, Mental health nursing

WHY ESSEX?

1

We've been ranked in the Top 10 for student satisfaction two years in a row

2

Much of your study is spent in clinical settings, working alongside nurses and other professionals

3

Our focus is on producing nurses with empathy as well as technical skill

Your career

Successfully completing one of our nursing courses leads to admission to the Professional Register, regulated by the Nursing and Midwifery Council, as a registered nurse (adult or mental health), which allows you to practise as a nurse.

NHS Constitution and Values

As part of the selection process, you will be required to demonstrate a good knowledge and a clear understanding of the significance of the NHS Constitution and its core values.

Hands-on experience is a key part of your study at Essex

Our students practise care, competence and compassion in everything they do.

At Essex we have a long-standing commitment to teaching nursing. Our graduates possess the values that are essential in today's world. We model dignity, respect and consideration for people in everything we do. As one of our students, you are committed to making a difference to the health of others locally, nationally and internationally, and gain the skills and confidence to speak up and challenge when things are wrong.

Typical modules

- Clinical Practice Assessments
- Critical Appraisal Skills
- Critical Patient Pathways
- Critical Recovery Journeys
- Delivering Compassionate Care
- How People Function
- Leadership
- Personal Development
- Research Activity

“ I chose to study at the University of Essex because of the reputation they have for their research facilities. Throughout my three years I was given the tools I needed to flourish as a nurse. The University also allowed students to travel abroad for their elective clinical placement, which allowed me to explore cultural differences in healthcare. Since graduating from Essex I have been working in a large A&E department as a registered nurse. I received this job offer, as well as 2 others, 9 months prior to finishing my University course. ”

Tara Coumbe, BSc Nursing (Adult) *15

COURSE	UCAS CODES	TYPICAL ENTRY REQUIREMENTS
SOUTHEND OR COLCHESTER CAMPUS*		
BSc Nursing (Adult)	B740	A-levels: BBC. GCSE: Mathematics and English Language C. BTEC Extended Diploma: DDD (in relevant subjects).
BSc Nursing (Mental Health)	B760	Access to HE Diploma: standard required is generally at Merit level (in relevant subjects).

Please note that these courses are only available to UK and EU applicants.

* Delivery of this course at the Colchester Campus is subject to final approval.

Successful applicants will be required to satisfy a Disclosure and Barring Service check and undergo a Work Health Assessment. Non-native English speakers require IELTS 7.0, with a minimum of 7.0 in each element.

At the time of publication (January 2016) funding for courses with NHS placements is under review. Please check funding arrangements before applying.

Occupational Therapy



WHY ESSEX?

1 Gain hands-on experience in a range of professional settings through practice placements

2 Our close links with practice educators will strengthen your career prospects

3 Small class-sizes enable close working relationships between students and staff

Your career

Upon graduation you will be eligible to apply for professional recognition with the Health and Care Professions Council, and full membership of the College of Occupational Therapists.

NHS Constitution and Values

As part of the selection process, you will be required to demonstrate a good knowledge and a clear understanding of the significance of the NHS Constitution and its core values.

Develop your practical skills working with real clients

Help promote health and wellbeing through occupational therapy.

Occupational therapists work in a diverse range of settings including: hospitals; clinics; prisons; hospices; care farms; supported accommodation; charitable organisations; local council and government departments; homes; schools and colleges. Becoming an occupational therapist requires patience, determination, common sense and enthusiasm, alongside unique knowledge and skills; but the reward is an interesting, people-centred career in which you help people to lead full and satisfying lives, as independently as possible.

Key topics

- Designing effective occupational therapy interventions for people of all ages
- Employability
- Global perspectives of occupational therapy
- Inter-professional collaboration
- Practice placements in a wide variety of settings
- Service development and improvement
- Technology and occupational therapy
- The use of occupation to promote health and wellbeing
- Transferable core skills within occupational therapy

“ At Essex, I most enjoyed the variety of interactive and independent learning activities and tools that were used to facilitate the development of new skills and collaborative working. Having dyslexia, this suited my learning needs well as I was able to demonstrate my knowledge not only through written assignments, but through also creating DVDs and coming up with potential business ideas. These were all very influential to my learning and helped to make the four years of my studying very enjoyable. ”

Natasha Purcell, BSc Occupational Therapy '15

COURSE	TYPICAL ENTRY REQUIREMENTS
BSc Occupational Therapy (four-year, part-time)	A-levels: CC, supported by 5 GCSEs at A*-C (including Mathematics, English Language and Science). Equivalent Level 3 qualifications are considered – please visit our website for full details.

For additional GCSE and English language requirements, see p54.
For this course, please apply directly via our website

Oral health science



Your career

Successful completion of our FdSc Oral Health Science enables registration with the General Dental Council (GDC) as a dental hygienist. Successful completion of our BSc Oral Health Science enables registration with the GDC as a dental therapist.

NHS Constitution and Values

As part of the selection process, you will be required to demonstrate a good knowledge and a clear understanding of the significance of the NHS Constitution and its core values.

WHY ESSEX?

1 We have a fantastic 100% success rate for employability and excellent student satisfaction scores

2 Learn clinical skills in our dedicated, state-of-the-art dental skills lab

3 You are involved in the treatment of patients right from the beginning of your course

Gain technical experience in our state-of-the-art dental skills lab

Become a professional dental hygienist or therapist.

Our FdSc course prepares you for a career as a dental hygienist and enables you to register with the General Dental Council. At Essex we ensure that you are qualified and confident to practise once you graduate, and gain a holistic approach to patient care. Our BSc prepares you for a career as a dental therapist. This course is a one-year top-up, open to you as an existing registered dental hygienist.

Popular modules

- Biomedical and Psychosocial Sciences
- Comprehensive Oral Health Care
- Developing Professional Practice
- Extending Oral Health Practice
- Health, Illness and Disease
- Health Policy, Law and Ethics
- Management of Oral Diseases
- Managing the Oral Care of Children and Adolescents
- Promotion of Oral Health and Prevention of Dental Diseases
- Special Needs

“ I applied for the Oral Health Science degree because I had a long career in dentistry and dental nursing, and therefore it was a natural progression for me. During my time at the University of Essex I was trained and supported by specialist lecturers practising in state-of-the-art labs. This course is unique, with “real life” environments and experiences over the course of two years that prepares students for their future employment as Dental Hygienists. ” Sylwia Gorska, FdSc Oral Health Science '15

COURSE	UCAS CODES	TYPICAL ENTRY REQUIREMENTS
SOUTHEND CAMPUS		
FdSc Oral Health Science	B750 2 years	<p>A-levels: CC, including one core science subject or equivalent.</p> <p>GCSE: Mathematics, English and a science related subject C.</p> <p>BTEC Extended Diploma: MPP (in health science related subject).</p> <p>National Dental Nurse Certificate or Diploma in Dental Nursing (with a minimum of two years' experience).</p> <p>Your entry is based on your ability to study at Foundation degree level. Please visit our website for more information.</p>
BSc Oral Health Science	B751 1 year (top-up)	Please visit our website for more information.

For additional GCSE and English language requirements, see p54.

Successful applicants will be required to satisfy a Disclosure and Barring Service check and undergo a Work Health Assessment.

Philosophy



WHY ESSEX?

1

We are world-renowned for our combination of continental and Anglo-American philosophy

2

We provide a critical perspective on political, economic and technological developments

3

Our modules cover a wide range of topics, and many are exam-free

Graduate careers

- Business and financial project management
- Consultancy
- Education
- Government
- Marketing and sales
- Recruitment and human resources
- Research and analysis
- Social and care work

Not just quiet contemplation – philosophy has great practical value

We expand the realm of the possible by going beyond what has so far been thinkable.

Philosophy is the rigorous study of ideas and arguments. At Essex we embrace this philosophical rigour in order to address the existential questions of human life, and to gain a critical perspective on the social, political and economic challenges we face today. Join our tight-knit school of internationally renowned philosophers for a unique, intellectually stimulating journey.

Popular modules

- 20th Century Continental Philosophy
- Capitalism and its Critics
- Conceptual Foundations of Modernity
- Critical Reasoning and Logical Argument
- Death, God and the Meaning of Life
- Ethics
- Nietzsche
- Philosophy and Literature
- Philosophy and Religion

“ I decided to study at Essex after attending an Open Day. I instantly felt at home and knew that this was the place that I wanted to study. The School of Philosophy is known for its mix of Continental and Anglo-American Philosophy, which gives students a lot of choice in how they want to study. The School also places emphasis on political philosophy and applying philosophy to real-world problems, which is something that really appealed to me. ” Jake Featherstone, BA Philosophy and Politics '15

COURSE	UCAS CODES		TYPICAL ENTRY REQUIREMENTS
	3 years	+ year abroad	
BA Philosophy*	V500	V501	A-levels: BBB. IB: 30 points. Entry requirements for students studying BTEC qualifications are dependent on units studied. Advice can be provided on an individual basis. The standard required is generally at Distinction level.
BA Philosophy, Religion and Ethics	VV56	VV5P	
BA Philosophy and Art History	VV53	VV5H	
BA Philosophy and History*	VV15	VV5C	
BA Philosophy with Human Rights	V5M9	V5MX	
BA Philosophy and Law	MVC5	VM51	
BA Philosophy and Literature*	QV25	VQ5F	
BA Philosophy and Politics	LV25	LV2M	
BA Philosophy and Sociology	LV35	VL53	

For additional GCSE and English language requirements, see p54.

* International and EU applicants can take this course with a foundation year. For information, see p102.

Physiotherapy



WHY ESSEX?

1

Gain hands-on experience in a range of professional settings through practice placements

2

Our close links with clinicians in practice will strengthen your career prospects

3

Small class-sizes enable close working relationships between students and staff

Your career

Upon graduation you will be eligible to apply for professional registration with the Health and Care Professions Council, as well as the Chartered Society of Physiotherapy.

NHS Constitution and Values

As part of the selection process, you will be required to demonstrate a good knowledge and a clear understanding of the significance of the NHS Constitution and its core values.

Develop theoretical knowledge and practical skills in our dedicated physiotherapy lab

Learn how to deliver treatment that helps to transform lives.

Physiotherapists, as Allied Health Professionals, work in hospitals, clinics, homes, schools and colleges. You learn to use physical approaches to promote, maintain, and restore physical, psychological and social wellbeing, taking account of the variations in health status. Through partnership and negotiation, physiotherapists work with people to maximise the potential of human function and movement.

Key topics

- Anatomy
- Musculoskeletal Physiotherapy
- Neurological Physiotherapy
- Pathophysiology
- Research Skills
- Respiratory Physiotherapy

“I had been a Physiotherapy Assistant for three years before deciding to apply for the part time BSc Physiotherapy degree at the University of Essex. It was important to me that I could carry on working whilst studying, not only in order to meet financial commitments, but also to maintain the hands-on skills I had built up over the previous three years.

"Choosing the part-time course has allowed me the freedom to study at a pace that suits me, whilst also maintaining my previous standard of living, financially and socially. I'm now in the final year of the course and the facilities that have been at my disposal throughout the 4 years (including academic support and guidance) have been great. I would thoroughly recommend this course to anyone who wants to study Physiotherapy, especially if they are concerned about juggling work, family life and study all at the same time, because the University of Essex has helped make that possible.”

Matthew Cobbold, BSc Physiotherapy student

COURSE	UCAS CODES	TYPICAL ENTRY REQUIREMENTS
BSc Physiotherapy (four-year part-time)	B160	A-levels: CC (to include a biological or sports science subject), supported by 5 GCSEs at A*-C (including Mathematics, English Language and Science). Equivalent Level 3 qualifications are considered – please visit our website for full details.

For additional GCSE and English language requirements, see p54.
For this course, please apply directly via our website.

Politics



WHY ESSEX?

1

We are consistently ranked as the top politics department in the UK since national assessments began

2

You're involved in ground-breaking research regardless of your level of study and experience

3

We have the only Regius Professorship in Political Science in the UK, an honour conferred by the Queen

Graduate careers

- Business and commerce
- Civil Service
- Media and journalism
- Non-governmental organisations (NGOs)
- Opinion polling
- Police and armed forces
- Political parties
- Voluntary sector

As world leaders in political science we've never been scared to ask the difficult questions

We are the top politics department in the country.

Students travel from all over the world to enjoy the excellent education and career prospects we provide. Our research casts light on aspects of life you might never ordinarily connect to politics and government. Want to know why earthquakes are deadlier where the Mafia is stronger? How cellphone activity predicts riots, or why people more scared of spiders are more conservative? Ask an Essex political scientist.

Popular modules

- Authoritarianism and Corruption
- Cooperation and Conflict
- Development, NGOs and Aid
- Environmental Politics
- Ethics and Public Policy
- Human Rights and Global Justice
- International Negotiation
- Politics of the Middle East
- Predicting Global Trends
- Violent Non-State Actors

“ I absolutely loved Essex. It was great to be able to study such a wide range of topics and to conduct cutting-edge research. It’s such a welcoming community and so easy to get involved. Taking part in (a few of many!) sports and societies and helping to organise the department’s student conference boosted my CV and got me my current job with HPI Research. My employers were impressed with just how much I’d covered at university and my advanced research skills in particular. ” Lexi Keegan, BA Philosophy, Politics, and Economics ‘15

COURSE	UCAS CODES			TYPICAL ENTRY REQUIREMENTS
	3 years	+ year abroad	+ placement year	
BA Politics*■	L200	L201	L203	A-levels: BBB. IB: 30 points. Entry requirements for students studying BTEC qualifications are dependent on units studied. Advice can be provided on an individual basis. The standard required is generally at Distinction level.
BA International Relations*■	L258	L259	L260	
BA Elections, Public Opinion and Parties■	L290	L291	L293	
BA Political Theory and Public Policy■	7L29	0A56	7L30	
BA Politics with Human Rights	L2M9	LFM9	L219	As L200 above, plus C in GCSE Mathematics (or equivalent).
BA Political Economics■	L150	L151	L152	
BA Philosophy, Politics and Economics■	L0V0	L0VA	L0V1	
BA Economics and Politics■	LL12	LL1F	LL13	

For additional GCSE and English language requirements, see p54.

* International and EU applicants can take this course with a foundation year. For information, see p102.

■ Awarded Q-Step Affiliate status, which means you can take a specific degree path to graduate with enhanced quantitative skills which employers are looking for.

Psychoanalytic studies / Therapeutic care

WHY ESSEX?

1

Learn in small groups with expert practitioners and academics

2

Our approachable staff have clinical as well as academic expertise and experience

3

Our unique courses combine contributions from a wide range of theoretical approaches

Graduate careers

- Education
- Health and social care
- Learning support
- Mental health
- Nursing
- Residential child care
- Social care
- Teaching
- Youth work

Explore what makes people tick, and what it takes to mend the cracks

What's hidden in the mind?

Are you fascinated by human behaviour? Do you want to explore why so many people have emotional or relationship problems? Or to investigate what underpins cultural and political activities? Our courses on psychoanalysis and therapeutic care scrutinise all of these questions. Looking beneath the surface, at levels untouched by other disciplines, we explore the role of the unconscious mind in mental health, culture and society.

Popular modules

- Child, Adolescent and Adult Development
- Introduction to Freud
- Introduction to Jung
- Introduction to Psychodynamic Observation and Reflective Practice
- Popular Film, Literature and Television: A Psychoanalytic Approach
- Sex, Politics and Religion
- Therapeutic Care in Context
- Therapeutic Communication Skills
- Trauma in Individuals, Groups and Organisations

“ I have always been interested in analytical psychology, and in particular how people relate to each other within the workplace. Studying modules related to organisational dynamics provided me with a theoretical framework in which to understand real workplace issues. I left Essex with confidence in my ability to communicate a persuasive argument, and have since obtained a position within a financial services organisation. ”

David Bloomfield, BA Psychoanalytic Studies '15

COURSE	UCAS CODES		TYPICAL ENTRY REQUIREMENTS
		+ placement year	
COLCHESTER CAMPUS ONLY			
BA Psychoanalytic Studies	C890 (3 years)	C89A*	A-levels: BBB. IB: 30 points.
BA Therapeutic Communication and Therapeutic Organisations* (Adult and Child and Adolescent)	1 year top up		You should have a Foundation Degree in Therapeutic Communication and Therapeutic Organisations with a merit level and a capacity to study at a higher level.
SOUTHEND CAMPUS ONLY			
BA Therapeutic Care	C847 (3 years)		A-levels: BCC. IB: 28 points.
COLCHESTER AND SOUTHEND CAMPUSES			
FdA Therapeutic Communication and Therapeutic Organisations* (Adult and Child and Adolescent)	2 years		You must demonstrate capacity to study for a Foundation Degree as evidenced by NVQ, A-level and Access to HE Diploma or other evidence, perhaps including evidence of relevant experience and ability from the workplace.

For additional GCSE and English language requirements, see p54.

† For these courses, please apply directly to the Centre for Psychoanalytic Studies at Essex. Email us for information. E.cpsugrad@essex.ac.uk

* Subject to approval.

Psychology



WHY ESSEX?

1 You gain professional status on our British Psychological Society (BPS) accredited courses

2 You have unparalleled access to research equipment such as EEG, TMS, and eye tracking

3 Work as a research assistant through our popular Research Experience Scheme

Graduate careers

- Clinical, forensic, educational or occupational psychology
- Finance
- Human resources
- Management
- Media and marketing
- Mental health care
- Social work

Access state-of-the-art equipment in our purpose-built psychology facility

Psychology impacts on every aspect of human behaviour.

What drives people to act, respond, remember and recognise things in the way they do? How do we understand relationships and interpret the actions of others? If you're curious about how our minds work and what drives human behaviour, psychology is the perfect subject. At Essex you acquire skills that go far beyond being useful in related professions. Studying psychology is an investment for life.

Popular modules

- Applied Psychology
- Brain and Behaviour
- Cognitive Neuropsychology
- Cognitive Psychology
- Developmental Psychology
- Discovering Psychology
- Emotion
- Evolutionary Psychology
- Personality and Individual Differences
- Social Psychology
- Statistics for Psychologists

“ My degree enabled me to start my current job as my employer had registered on the Internship Scheme at Essex. During my course I learnt invaluable transferable skills such as report writing, punctuality, statistical analysis and research, which has allowed me to progress from a Trainee Trader to a director of my company within three years. ”

Leanne Walsham, BSc Psychology '12

COURSE	UCAS CODES		TYPICAL ENTRY REQUIREMENTS
	3 years	+ year abroad	
BSc Psychology	C800	C803	A-levels: BBB. GCSE: Mathematics C. IB: 30 points, including Standard Level Mathematics grade 4, if not taken at Higher Level. ^o ^o Please note that Maths in the IB is not required if you have already achieved GCSE Maths at grade C or above. Entry requirements for students studying BTEC qualifications are dependent on units studied. Advice can be provided on an individual basis. The standard required is generally at Distinction level.
BA Psychology	C802	C801	
BSc Psychology with Cognitive Neuroscience	C808	C806	

For additional GCSE and English language requirements, see p54.

All Psychology courses can be combined with a placement year. You are responsible for finding your placement, with the support and guidance of the Department of Psychology and the Employability and Careers Centre.

Social work

WHY ESSEX?

1 Our partnerships with placement providers ensure you gain effective high-quality training

2 The programme meets both the HCPC Standards of Proficiency and the Professional Capabilities Framework for Social Work

3 Gain in-depth experience through working with children, young people, adults, families and communities

Your career

To be a social worker in England you need a degree in social work approved by the Health and Care Professions Council, as well as a wide range of life skills including the ability to act as an advocate, an adviser and someone who can actively listen. We develop the skills to support you in your chosen career of social work.

Social work is all about people. It's an extremely rewarding and challenging profession.

You'll need to be hard working, adaptable, honest and, above all, passionate about finding long-term solutions and supporting positive changes for children, adults and families. At the heart of our course is the opportunity for you to develop the skills, knowledge and understanding of how to support people to improve the personal, practical, psychological and social aspects of their lives.

Popular modules

- Critical Reflection and Professional Challenge
- Emotional, Relational and Mental Health Issues
- Interpersonal Skills for Practice
- Legislation, Regulation and Social Policy for Practice
- Lifespan Development
- Practice Interventions
- Professional Skills
- Research Perspectives
- Sociological and Psychological Frameworks

“ I decided to study at Essex due to the facilities in the Forum and the Gateway Building, which I felt would benefit me throughout my studies. I am currently on my first work placement, which I am enjoying. I feel that I have developed a lot whilst I have been on my placement, which the first year of my course prepared me well for. ”

Ellese Degenhart, BA Social Work '17

COURSE	UCAS CODES	TYPICAL ENTRY REQUIREMENTS
SOUTHEND CAMPUS	3 years	
BA Social Work	L500	<p>A-levels: BBB.</p> <p>GCSE: Mathematics C or equivalent qualification.</p> <p>IB: 30 points.^o</p> <p>^o Please note that Maths in the IB is not required if you have already achieved GCSE Maths at grade C or above.</p> <p>BTEC: DDM (in relevant subjects)</p> <p>Access to HE Diploma: Standard required is generally at Merit level (in relevant subjects)</p> <p>Some paid or voluntary experience in health or social care in a relevant social care or child care/education setting is also required.</p>

For additional GCSE and English language requirements, see p54.

Non-native English speakers will require IELTS 7.0, with a minimum of 6.5 in each element.

Sociology



WHY ESSEX?

1 Our teaching is underpinned by research – new ideas and theories are tested in the classroom

2 Acquire a range of skills valued by employers including research, interpreting data and debating

3 Choose from a wide range of topics as part of your course – focus on what interests you most

Graduate careers

- Business and finance
- Education
- Government
- Housing, care, health and welfare services
- Human resources
- Market research
- Police services
- Public relations
- Youth and community work

Explore how technology is changing the way individuals interact with one another in society

Sociology touches every aspect of our daily lives.

How do you relate to politicians, celebrities, your teachers, and your friends? How do you define yourself, your family and others? We investigate what connects people with each other and what divides us, as well as exploring questions of social justice and equality. At Essex you develop a sociological imagination to take out into the world to change it for the better.

Popular modules

- American Society: Ethnic Encounters in the Making of the USA
- Anthropology of Birth, Sex and Death
- Continuity and Controversy in Sociology: Sociological Analysis
- Digital Media and Society
- Globalisation and Crime
- Introduction to Media, Culture and Society
- Race, Class and Gender
- Researching Social Life
- Social Psychology: Self and Interaction
- Sociology of Sexualities

“The Department of Sociology is ranked very highly in the UK for research, and the community atmosphere was something I really liked. The research at Essex is ground-breaking and the teaching staff openly share ideas with you about the latest developments in the field. The opportunity to study human rights alongside this isn’t offered by many universities.

“Essex helped me develop in many different ways – it instilled confidence both academically and personally, and studying human rights meant that I had a multidisciplinary background which enabled me to study law at postgraduate level at Essex. It was so great here that I just couldn’t leave!” Beth Astley-Serougi, BA Sociology with Human Rights ’14

COURSE	UCAS CODES			TYPICAL ENTRY REQUIREMENTS
	3 years	+ year abroad	+ placement year	
BA Sociology*	L300	L301	L306	A-levels: BBB. IB: 30 points. Entry requirements for students studying BTEC qualifications are dependent on units studied. Advice can be provided on an individual basis. The standard required is generally at Distinction level.
BA Communications and Digital Culture*	LP33	PL33	LP34	
BA Sociology and Criminology*	LM39	LMH9	LM38	
BA Sociology with Psychosocial Studies	LJC8	LJ8C	LCJ8	
BA Sociology with Social Anthropology	LL36	LL3P	LL6P	
BA Sociology with Human Rights	L3M9	LMJ9	L3J9	
BA Sociology and Politics	LL32	LL23	LL24	
BA Sociology and Social Psychology	CL83	CLV3		

For additional GCSE and English language requirements, see p54.

* International and EU applicants can take this course with a foundation year. For information, see p102.

All Sociology courses have been awarded Q-Step Affiliate status, which means you can take a specific degree path to graduate with enhanced quantitative skills which employers are looking for.

Sports and exercise science



WHY ESSEX?

1

The majority of our research is rated world-leading or internationally excellent in the most recent Research Excellence Framework

2

You work with elite athletes and gain experience in our renowned Human Performance Unit

3

You gain in-depth knowledge by using our advanced research equipment

Graduate careers

- Education
- Exercise physiology
- Fitness management
- Health promotion
- Personal training
- Sports administration
- Sports coaching
- Sports development
- Sports science support

Serious about sport – work with elite athletes in our Human Performance Unit and study the human body in physical activity

Are Olympic athletes born or made?

Can exercise be bad for you? What is the secret behind the world's fastest sprinter? At Essex we take sport and exercise seriously. We help you to understand the biology, physiology, biomechanics and psychology of sport, exercise and physical activity. You are taught by internationally recognised scientists using our state-of-the-art facilities. Turn your passion for fitness and health into a career.

Popular modules

- Anatomy and Physiology
- Assessing and Developing Performance in Exercise
- Biomechanics and Movement Analysis
- Exercise Physiology
- Health and Lifestyle
- Nutrition and Drugs in Sports and Exercise
- Professional Skills in Sports and Exercise Science
- Psychology of Sport, Exercise and Performance
- Sports Injuries and Exercise Rehabilitation

“Essex academics are passionate about advancing our understanding of sports and exercise science. They create a stimulating environment and their research meant I was always up to speed with the latest theories and developments. They taught us how to conduct our own research, and I developed a range of practical skills that are really important in my current postgraduate studies, but have also prepared me for a career.

“It’s becoming increasingly apparent that fitness and health is hugely important for our society, and having the opportunity to make a difference made my time at Essex really special.”

Sophie Carter, BSc Sports and Exercise Science '13

COURSE	UCAS CODES			TYPICAL ENTRY REQUIREMENTS
	3 years	+ year abroad	+ placement year	
BSc Sports and Exercise Science	C600	C602	C606	A-levels: BCC, including B in one science subject or mathematics (PE and Psychology count as science A-levels). GCSE: Mathematics and Science C. IB: 28 points, including Higher Level Science or Mathematics grade 5, and Standard Level Mathematics and Science grade 4, if not taken at Higher Level. ^o ^o Please note that Maths in the IB is not required if you have already achieved GCSE Maths at grade C or above. BTEC Extended Diploma: DDM (in relevant subjects).
BSc Sports Performance and Coaching*	C607	C608	C609	

For additional GCSE and English language requirements, see p54.

* Subject to approval

Sports therapy



WHY ESSEX?

1

You have access to our professional, state-of-the-art research equipment

2

Many of our athletes receive sports scholarships worth over £2,500 and a support package

3

Our course is accredited by the Society of Sports Therapists – your passport to a range of careers

Your career

When you graduate, you will be eligible for membership of the Society of Sports Therapists. We have a strong record in graduate employability and provide you with the skills to work as a self-employed therapist, within professional sport, the health and fitness industry, health promotion, or research.

Develop the skills and experience to work with elite athletes

Gain the specialist skills and knowledge required to work as a sports therapist.

With a focus on employability and self-development, we support you to become an autonomous practitioner. Taught by experts in the fields of sports therapy and sports and exercise science, you develop a range of treatment options including electrotherapy, exercise, and manual skills.

Popular modules

- Academic and Practical Sports Therapy
- Anatomy and Pathophysiology for Sports Therapy Practice
- Applied Biomechanics and Movement Analysis
- Evaluation and Treatment of Sport and Exercise Injuries
- Exercise Physiology
- Introduction to Biomechanics
- Introduction to Sport and Exercise Psychology
- Introduction to Sports Therapy
- Rehabilitation and Remedial Exercise
- Therapeutic Modalities

“ I am currently in my second year at Essex, and have loved getting involved in my course. I really enjoy what I am learning about and I cannot wait to have my degree. I am also acting as a first aider for both men’s and women’s rugby 7’s performance teams, which has benefitted me socially and academically. Essex provides the best possible experience with regard to treating a variety of different athletes with a range of injuries and conditions. ”

Annabel Semmence, BSc Sports Therapy student

COURSE	UCAS CODES			TYPICAL ENTRY REQUIREMENTS
	3 years	+ year abroad	+ placement year	
BSc Sports Therapy	C603	C605	C604	<p>A-levels: BBB, including one science subject or Mathematics (PE and Psychology count as science A-levels).</p> <p>GCSE: Mathematics and Science C.</p> <p>IB: 30 points, including Higher Level Science or Mathematics grade 5 and Standard Level Mathematics and Science grade 4, if not taken at Higher Level.⁹</p> <p>⁹ Please note that Maths in the IB is not required if you have already achieved GCSE Maths at grade C or above.</p> <p>BTEC Extended Diploma: DDD (in relevant subjects).</p>

For additional GCSE and English language requirements, see p54.





► www.essex.ac.uk/ug17
► www.essex.ac.uk/ug17/courses

Enough about us. We'd love to hear from you.

 /uniofessex

 /Uni_of_Essex

 /uniessex

 /uniessex

 /uniofessex

Say hello

There's a whole online community waiting to talk about student life at Essex. Join the conversation on Facebook, keep up with the latest news on Twitter, get a glimpse of campus life on Instagram and see what we've been up to on YouTube. We have an open ear policy when it comes to social media and respond to every enquiry. So if something is on your mind, get in touch, we love a good chat!

#HelloEssex

Our partners



Colchester Institute

Colchester Institute has been helping to transform the lives of students for over 50 years. They provide a range of industry-focused and vocationally relevant degrees in Engineering, Construction, Business, Management, Computing, IT, Teacher Training, Counselling, Health and Social Care and the Creative and Performing Arts, including: Art, Design, Fashion, Music, Digital Media, Theatre and Acting. Colchester Institute places its students and their future at the heart of everything they do.

T +44 (0)1206 712000
E info@colchester.ac.uk
► www.colchester.ac.uk

Edge Hotel School

The Edge Hotel School offers a two-year Hotel Management degree preparing its graduates as the future leaders of the hospitality industry. The course combines theory, professional skills and practical experience in a real four-star hotel, based at the University of Essex's Colchester Campus. There is flexibility to join the course at one of its multiple start dates.

T +44 (0)1206 872858
E enquiry@edgehotelschool.ac.uk
► www.edgehotelschool.ac.uk

We are committed to making an Essex Education available through a range of provision, working closely with partner institutions to develop and maintain high-quality and accessible learning opportunities.



South Essex College

South Essex College offers a wide range of degree courses designed to ensure that graduates are armed with the skills they require to pursue the career of their dreams. You will study at The Forum in Southend-on-Sea, a spectacular £27 million ultramodern library and learning zone, which houses a huge range of books and resources and is equipped with the latest technology. Your learning experience is enhanced by small class sizes and significant teaching time with highly experienced lecturers.

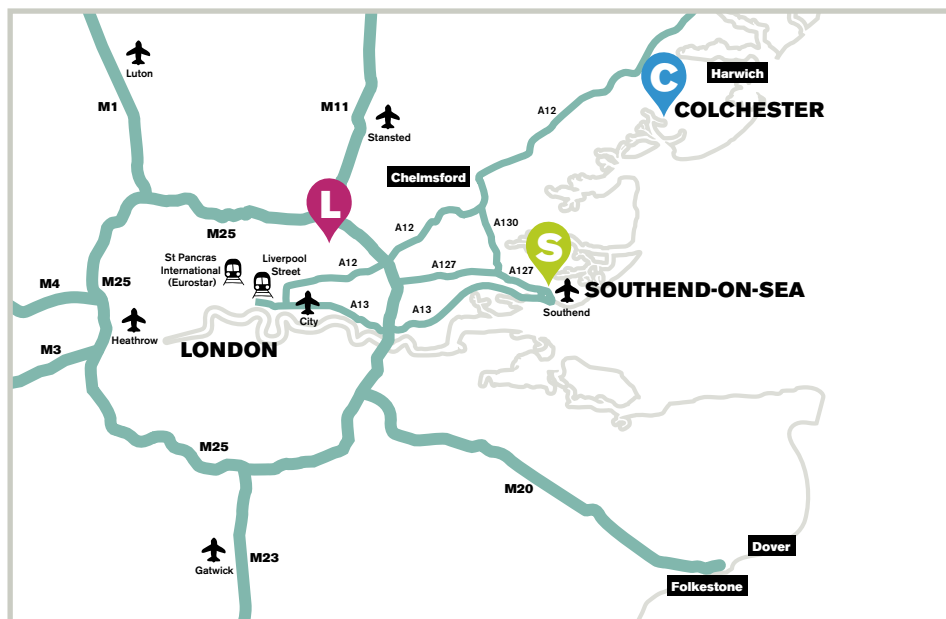
T +44 (0)845 5212345
E learning@southessex.ac.uk
► www.southessex.ac.uk

University of Essex Online

University of Essex Online degree courses give you the opportunity to study for your degree via distance learning, allowing you to gain a qualification from a respected university whilst fitting your studies around work and personal commitments. We have regular intakes throughout the year, and our entry requirements recognise work experience as well as previous academic achievements. Contact us or visit our website for more information.

T +44 (0)800 0527 526
E enquiries@online.essex.ac.uk
► www.online.essex.ac.uk

A great location



Colchester to:

- Central London: 60 miles (97km); 45 minutes to 1 hour by train, 1 hour and 40 minutes by car.
- Stansted Airport: 33 miles (53km); 1 hour and 15 minutes by bus, 50 minutes by car.
- Southend Airport: 41 miles (66km); 1 hour and 15 minutes by train, 1 hour by car.
- Gatwick Airport: 83 miles (133km); 1 hour and 50 minutes by train, 1 hour and 40 minutes by car.
- Heathrow Airport: 90 miles (150km); 2 hours and 10 minutes by train, 1 hour and 55 minutes by car.
- Harwich International Port: 20 miles (33km); 25 minutes by train, 35 minutes by car.

Southend to:

- Central London: 40 miles (64km); 45 minutes to 1 hour by train, 1 hour and 20 minutes by car.
- Southend Airport: 3 miles (5km); 15 minutes by bus, 10 minutes by car.
- Stansted Airport: 40 miles (64km); 1 hour and 30 minutes by bus, 1 hour by car.
- Gatwick Airport: 62 miles (100km); 2 hours by train, 1 hour and 10 minutes by car.
- Heathrow Airport: 76 miles (122km); 2 hours by train, 1 hour and 20 minutes by car.
- Harwich International Port: 61 miles (98km); 2 hours by train, 1 hour and 25 minutes by car.

These figures are approximate, the exact length of a journey will be dependent on the time of day travelled.

Our campuses

COLCHESTER

SOUTHEND

LOUGHTON



Loughton to:

- Central London: 16 miles (25km); 42 minutes by train, 45 minutes by car.
- London City Airport: 14 miles (19km); 40 minutes by train, 25 minutes by car.
- Stansted Airport: 25 miles (43km); 1 hour and 28 minutes by train, 30 minutes by car.
- Heathrow Airport: 33 miles (74km); 40 minutes by train, 1 hour by car.
- Gatwick Airport: 59 miles (103km); 1 hour and 30 minutes by train, 1 hour and 20 minutes by car.
- Harwich International Port: 74 miles (120km); 1 hour and 30 minutes by car.

Small print

About this prospectus

This prospectus tries to answer your questions about life and academic provision on offer at the University of Essex. It was prepared early in 2016 and refers to courses which will be available in October 2017. Although great care is taken in compiling this prospectus, it is for the general guidance of prospective students only. The University cannot guarantee the provision of all the courses and services in the event of circumstances beyond its control and therefore reserves the right to make variations to the content and method of delivery of programmes, courses and other services, to discontinue programmes, courses and other services and to merge or combine programmes or courses, if such action is reasonably considered to be necessary by the University.

The most up-to-date information in relation to course structures is available on our programme specifications webpages.

► www.essex.ac.uk/programmespecs

The University cannot be held responsible for failure/delay in performing obligations caused by things beyond its reasonable control, such as fire, flood or industrial action. In accepting an offer of a place at the University, you consent to incorporation of this notice as a term of contract between you and the University. The full Procedures, Rules and Regulations of the University are set out in the Charter, Statutes and Ordinances and in the University Regulations, Policy and Procedures.

► www.essex.ac.uk/ug17/regs

No smoking policy

The University of Essex is committed to a no smoking policy, which means that smoking is not allowed in all University buildings.

Alternative formats

This prospectus is available in large print, audio and Braille formats. Please contact our Undergraduate Admissions Office for further information.

Quality assurance

The Quality Assurance Agency's Higher Education Review of the University in December 2014 covered every aspect of the University's provision and confirmed that the University has met all expectations and meets national requirements for standards and quality.

The University was commended for the strong focus on improving all areas of the student learning experience. The high-quality research environment and development opportunities offered to postgraduate research students was recognised, along with our commitment to listening and responding to student feedback, and to providing our students with opportunities to improve employment skills and prospects.

► www.qaa.ac.uk

Complaints procedure

If you have any comments or concerns about the recruitment or admissions process we operate, or about an application decision, which you do not wish to discuss with the Head of Undergraduate Admissions, you can write to the Director of Communications and External Relations. Alternatively, you can follow our complaints procedure.

► www.essex.ac.uk/ug17/voice

Policy statement on equality and diversity

The University of Essex celebrates diversity, challenges inequality and is committed to sustaining an inclusive and diverse community that is open to all who have the potential to benefit from membership of it and which ensures equality of opportunity for all its members. We expect staff, students and visitors to be treated, and to each other, with dignity and respect regardless of age, disability, gender reassignment, marriage and civil partnership, pregnancy and maternity, race, religion or belief, sex, sexual orientation, socio-economic background, political beliefs and affiliations, family circumstances or other irrelevant distinction.

Government funding

At the time of going to print, some detailed aspects of government funding had not been announced. As such, our figures are based on amounts for students entering in 2016, and may be subject to change or real-term increases. Visit our website for more information.

East 15 Acting School at our Loughton Campus

This prospectus refers mainly to the services, facilities and courses on offer at our Colchester Campus and at our Southend Campus. Our Loughton Campus is the base for students on many of East 15 Acting School's courses and includes state-of-the-art studios, technical equipment and innovative theatre space. Our Loughton Campus is just five minutes from the nearest London Underground station, Debden, on the east end of the Central line.

► www.essex.ac.uk/ug17/east15

Data for marketing purposes

Data have been selected for marketing purposes but all claims are based on the most current data that were available at the time of print: National Student Survey results are based on 2015 data; Research Excellence Framework results are based on 2014 data; Destination of Leavers from Higher Education results are based on 2012 data; QS World Rankings and Times Higher Education results are based on 2015 data and information.

Index

For subject areas, please see contents on page 57

Access to HE Diploma	54
Accommodation, residential	36-39
Applying to Essex	52-55
Arts	18, 19, 21, 29, 33, 43
Campus in Colchester – Aerial picture of	30-31
Campus in Colchester – Description of	28-29
Campus in Southend – Aerial picture of	34-35
Campus in Southend – Description of	32-33
Careers	24-25
Child care facilities (see day nursery)	
Clifftown Theatre and Studios	21, 33, 60-61
Clubs and societies	13, 29, 41
Colchester Institute	152
Contact information	160
Day nursery	25
Deferred entry	53
Disabled students	25, 156
Distance learning (see University of Essex online)	
East 15 Acting School	60-61
Edge Hotel School	20, 98-99, 152
English language requirements and support	44, 54-55
Entry requirements	54-55
Equal opportunities	25, 156
Essex Business School	58-59, 74-75, 104-105, 120-121
Essex living	42-43
Facilities	18-21
Fees and funding	50-51
Foundation degrees	102-107
Health centre	25
International Baccalaureate	54
International Foundation Programme	106-107
International students	44-45
Language learning	10-11

Library	19, 21
Living expenses	51
Location and travel	154-155
Mature students	41
Multi-faith chaplaincy	25, 44
Open Days	48-49
Overseas students (see International students)	
Part-time students	41
Placements	24
Qualifications (see entry requirements)	
Quality assurance	156
Research	22-23
Second year entry	53
Societies (see clubs and societies)	
South Essex College	153
Sport	14-15, 21, 29, 33
Student satisfaction	1
Student support	24-25
Students' Union	40-41
Studying abroad	8-9
Theatre (see arts)	
Tuition fees (see Fees and funding)	
UCAS	53
University of Essex Online	153
Visas	54
Visiting our University	48-49, 154-155
Worship facilities (see multi-faith chaplaincy)	

Produced by the University of Essex Marketing and Student Recruitment Office. We would like to thank all students and staff who helped to make this prospectus possible.

Photography by Paul Tait, The Students' Union Photography Society, Sarah-Jane Walsh, Dr Michael Steinke, Steven Owens and Janus van Helfteren.

Designed by Print Essex and printed by Belmont Press using processless plate technology, on isopropyl alcohol

free presses, significantly reducing the environmental impact of the printing process. All production processes are ISO14001 certified, and are independently audited by the British Standards Institute on a bi-annual basis. All waste streams are regularly benchmarked against the requirements of the waste hierarchy in order that undesired outputs are prevented, minimised, re-used, or ultimately recycled.

ISBN 978-1-909562-13-4
© University of Essex 2016

Notes

This image shows a single sheet of white paper with horizontal ruling lines. The lines are evenly spaced and run across the width of the page. There are no margins, text, or other markings on the paper.

[illegible]


If you would like more information,
or have questions about any aspect
of applying to Essex, please contact:


Undergraduate Admissions Office
University of Essex
Wivenhoe Park
Colchester CO4 3SQ
United Kingdom


T +44 (0)1206 873666

E admit@essex.ac.uk

 /uniofessex

 /Uni_of_Essex

 /uniessex

 /uniessex

 /uniofessex

Campus contact details

University of Essex
Colchester Campus
Wivenhoe Park
Colchester CO4 3SQ
United Kingdom
T +44 (0)1206 873333

University of Essex
Southend Campus
Elmer Approach
Southend-on-Sea SS1 1LW
United Kingdom
T +44 (0)1702 328200

**There's
nothing
more
in this
prospectus
but there's
plenty
more
online.**

WE ARE ESSEX.

WE'RE ON THE SIDE OF **PEOPLE WITH GUTS** – REBELS WITH A CAUSE. WE'RE ABOUT PEOPLE WHO **LOVE TO LEARN HOW**, BUT **WANT TO CHALLENGE WHY**. BUT WHY DO WE HAVE TO STOP HERE? WHY CAN'T WE TAKE IT FURTHER, TO THE BIT WHERE IT REALLY GETS INTERESTING? WE'RE ABOUT THE PEOPLE WHO HUDDLE OUTSIDE A CLASS LONG AFTER IT'S FINISHED BECAUSE THERE'S MUCH **MORE TO BE SAID**, MORE ARGUMENTS TO BE HAD. WE'RE ABOUT PEOPLE WHO ARE BOLD ENOUGH TO **CHALLENGE INEQUALITY** AND THE STATUS QUO. PEOPLE WHO DON'T EXPECT THE WORLD TO CHANGE SIMPLY BECAUSE THEY LIKED A FACEBOOK STATUS OR NODDED WHEN SOMEONE ELSE SPOKE. AT ESSEX YOU'RE NOT JUST A STUDENT, **YOU'RE A MEMBER**, SOMEONE WITH GENUINE LICENCE TO SHAPE WHAT GOES ON AROUND YOU. TO US IT DOESN'T MATTER WHERE YOU'VE COME FROM. WE'RE INTERESTED IN HOW YOU WANT TO GROW AND **WHAT YOU WANT TO CHANGE**. WE'RE AFTER PEOPLE WHO WILL HELP US PUSH THE FRONTIERS OF KNOWLEDGE. **CHALLENGING CONVENTION** IS IN OUR DNA. ALL OF WHICH LEAVES YOU WITH A DECISION: ARE YOU GOING TO SIT AND WATCH THE WORLD GO BY? OR DO YOU HAVE THE **COURAGE AND ENERGY** TO SHAPE IT? WE'LL HELP YOU EXPLORE, QUESTION AND CREATE **POWERFUL IDEAS**. WE'LL INTRODUCE YOU TO PEOPLE FROM EVERY CORNER OF THE PLANET, A **GENUINELY GLOBAL COMMUNITY** THAT LIVES, WORKS AND PLAYS TOGETHER. IF YOU GIVE UP AT THE FIRST HURDLE, ESSEX ISN'T FOR YOU. IF YOU WANT TO BE SPOON-FED A DEGREE, ESSEX ISN'T FOR YOU. IF YOU ARE BRAVE ENOUGH TO HAVE IDEAS AND GENEROUS ENOUGH TO SHARE THEM,

WELCOME HOME.

www.essex.ac.uk/ug17