



<https://www.ubi.pt/>

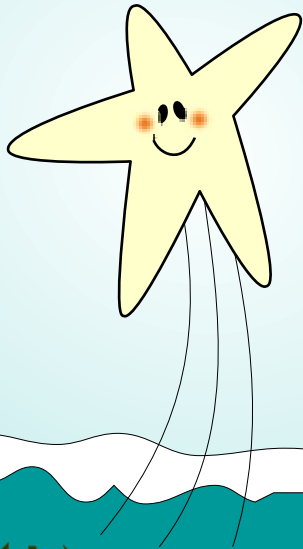


facebook

<https://www.facebook.com/UBI.pt/>



[https://www.instagram.com/ubi\\_pt/?hl=pt](https://www.instagram.com/ubi_pt/?hl=pt)



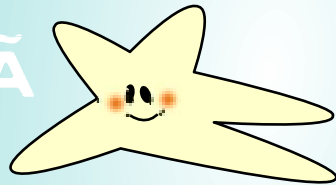
PORTUGAL

COVILHÃ

UNIVERSITY  
OF BEIRA INTERIOR



# UBI | COVILHÃ in numbers



**5** Faculties

**33** Undergraduate courses  
and **3** integrated masters  
degrees

**40** master's degrees  
**29** PhD degrees

**9050**

Students



**4043** graduation level

**1677** master level

**1991** integrated master level

**686** PhD level

**653** others

**1885** foreign students

**55+** nationalities



**18** Research Units

More than **1500** Researchers



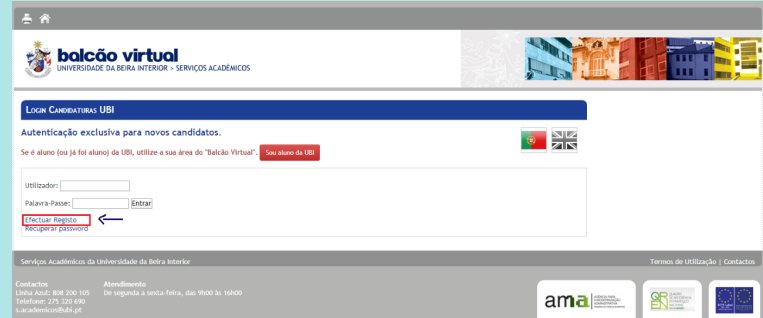
**845** Professors

**321** Employees

## Application

In 6 Steps



1. Go to the link [candidaturas.ubi.pt](http://candidaturas.ubi.pt) and select the contest you want to run for;
2. Before starting to complete the form application please select the option "Efetuar Registo" (Make Registration);  

3. After being registered on the UBI platform you must enter access credentials (defined in the registry) to fill in the application form;
4. After filling the form, you should attach all the required documents\*; duly authenticated;
5. Submit your application and follow the payment instructions provided.  
Payment methods: PayPal, ATM and Bank Transfer.
6. After making the payment, the application will be validated\*\*.



\* See required documents by country

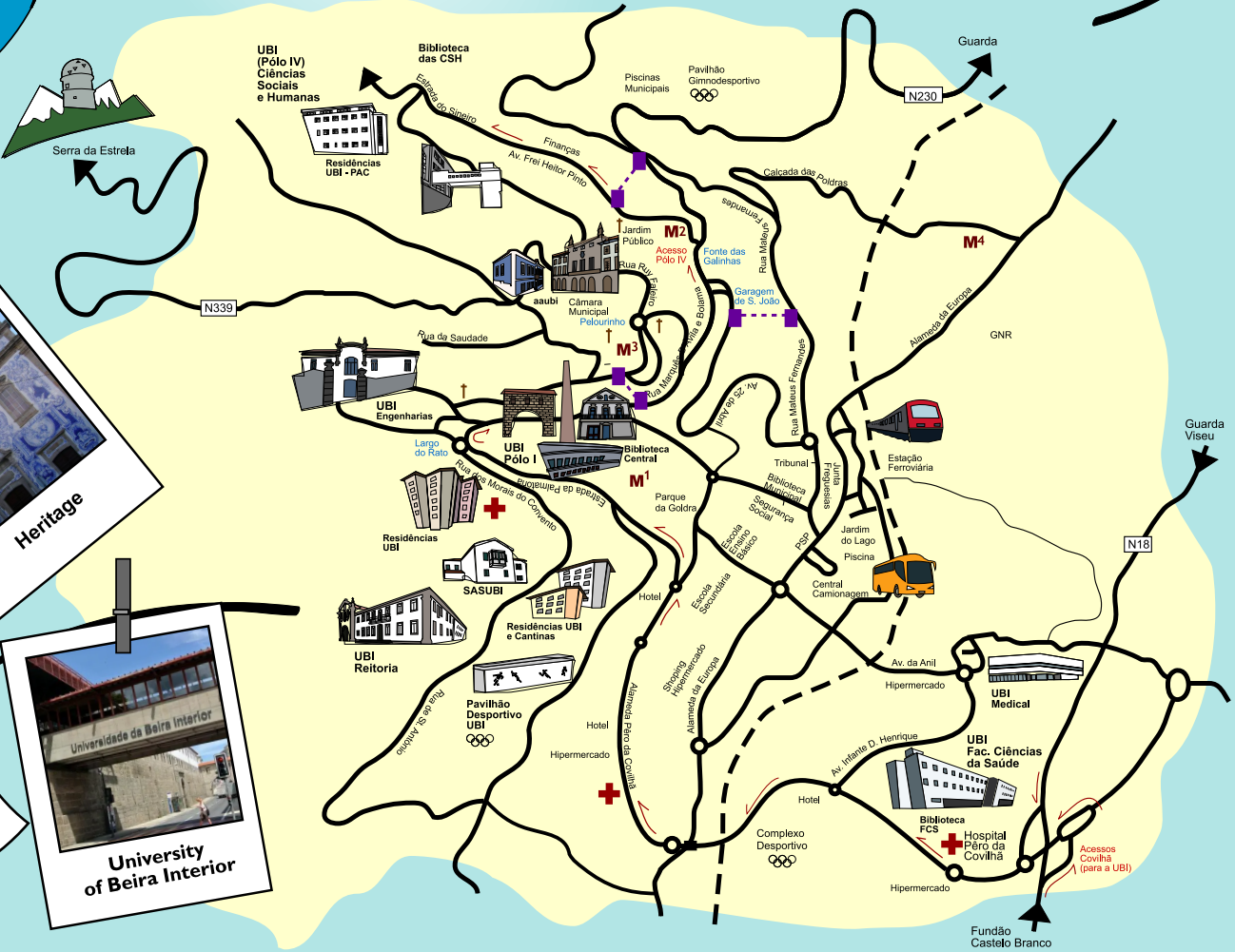
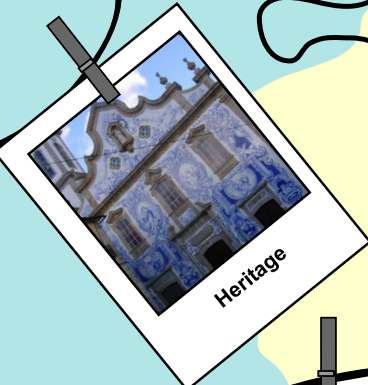
\*\* For the application to be valid it is imperative to pay the application fee.

# COVILHÃ

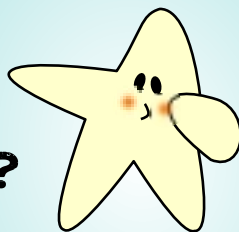


Train:  
[www.cp.pt](http://www.cp.pt)  
+ 351 707 210 220

Express Bus:  
[www.rede-expressos.pt](http://www.rede-expressos.pt)  
+ 351 707 223 344



# Why choose the University of Beira Interior?



1. UBI is high-tech and hands-on. It has inspiring study environments, with access to technology that improves knowledge and skill set manifolds.
2. At UBI you don't get lost in the crowd. The University has around 8200 students and 1000 members of staff. Small size creates a sense of community, cozy atmosphere and co-operation across disciplinary boundaries.
3. Covilhã is a friendly, welcoming place, a great city for students, with stunning natural landscapes (Covilhã is situated in a Unesco Geopark) and historic sites.
4. An affordable cost of living - Covilhã often has lower costs on items such as accommodation, while enjoying the same high-quality goods and services as the rest of the Country.
5. Equality and respect for diversity: with around 80 nationalities represented on campus, UBI is an international community with a rich cultural mix.

...And we have many features that make us an excellent option for international students.

Why don't you come and see for yourself?

**7 Residences**  
758 beds in residences of students



**3 Libraries**



Library of the Faculty of Health Sciences

Library of the Faculty of Social and Human Sciences



Central Library  
Open 24 hours every day  
7 days a week

**4 Canteens**



**8 Bars**



**2 Buffets**

**24 Nuclei of Cultural Student**

