

OSAKA UNIVERSITY PROSPECTUS 2020



The emotion behind **#doitall** is one of determination,
of excitement, and of innovation.
As a booming metropolis in the Kansai region of western Japan,
Osaka is one place where you can truly *do it all*.

#doitall in Osaka



Osaka, Japan

Osaka is one of the biggest metropolitan areas in Japan. Though the prefecture itself is the second smallest nationwide, it ranks third economically, and has the third highest population. About nine percent of all foreign residents make Osaka their home, and it is the second most popular destination for study abroad students. It is the center of the Kansai region: an area composed of Osaka, Kyoto, and several other prefectures, and has fast, efficient public transport to travel quickly to and from the surrounding areas.

Despite being a sprawling metropolis, The Economist ranked Osaka third in the world in their Safe Cities Index in 2019 and fourth in the Global Liveability Index in 2019.



Welcome to Osaka

A Gateway to Asia and the World

The artificial island that houses Kansai International Airport was the first 24-hour airport in Japan. It is an architectural marvel, and many world famous engineers and architects come even today to study its construction. It was built to further connect Japan internationally and domestically with a great number of LCC airlines flying in and out of its terminals in Japan. These budget flights make traveling all over the country a breeze, and the airport remains popular for tourists looking to hop around the island. You can also catch a flight from the nearby Osaka (Itami) Airport as well!



備考	時刻	出発	行先	航空会社	機体	航空会社
手続中、遅延	14:00	広州		CZ 390		JAL
最終、ゲート変更				MF 9240		
ターミナルより出発	14:00	ソウル（仁川）		KE 728		JAL
最終	14:10	上海（浦東）		MU 516		JAL
最終、ゲート変更				FM 516		
手続中	14:15	香港		UD 1687		
中	14:40	上海（浦東）		UL 897		
最終	15:00	深セン		ZH 9064		
中				MH 6607		
手続最終	15:10	長春		CZ 8334		
		経由地	大連			
手続中	15:20	15:10 天津		CA 152		
手続中、ゲート変更			経由地	大連		
手続中	15:25	15:15 セブ		PR 409		
手続中	15:30	成都		9C 8564		
手続中	15:30	深セン		CZ 8426		
ターミナルより出発	16:00	釜山		KE 794		Kansai Airports



From Kansai Airport to the City

Osaka's *Rapi:t* Train Operates between KIX and Namba (in Just 41 Minutes!)

Osaka has a sound infrastructure with multiple train lines, a monorail, a subway system, buses and friendly taxis that create a network of connectivity all over Osaka. You can even set your watch to our transportation network, as Japan's train service in particular is famous for always being on time! Just a quick ride from the airport will bring you to Namba, one of Osaka's largest metropolitan areas.



© Nankai Electric Railway Co., Ltd.



© Hankyu Corporation



© OSAKA MONORAIL CO., LTD.



© NTA-OSAKA KYUKU RAILWAY CO., LTD.

Minami (South) Area

Traditional Osakan Culture, Entertainment,
and Cuisine

A mix of the old world and modern, you can experience the traditional taste of Osaka and modern attitude in the South Area. Also known as Osaka's entertainment district, you can feel the passion of Osaka in its many restaurants, nightclubs, arcades, shopping districts, and live comedy and music performances. You can even take a tour down its famous canal, or duck into a local place to sample some fugu.





© Osaka Convention & Tourism Bureau



Kita (North) Area

Modern Shopping, Art and
Architecture with a Traditional Twist

You can discover the traditional scholar in yourself at the many museums and libraries in the Nakanoshima area, visit Tekijuku, one of Japan's oldest historical schools; or see the Osaka University Nakanoshima Center. For a taste of the fast-paced modern youth culture of Japan, Umeda, the center of Osaka, is just a quick train ride away. There, you can enjoy trendy shopping malls, amazing restaurants, and a multitude of sights and sounds.





Rooted in Kaitokudo and Tekijuku,
Osaka University was founded in 1931 through the passion of the people of Osaka.
With three campuses located in Suita, Toyonaka, and Minoh,
as well as a number of research institutes and laboratories,
Osaka University remains a place where you can *do it all* even today,
from research to recreation and everything in between.

#doitall at Osaka University

Osaka University

Your Brand New Day Starts Here

Located in northern Osaka, Osaka University has three campuses in the cities of Suita, Toyonaka, and Minoh. Each are just outside the center of Osaka city, and offer easy access to Osaka (Itami) Airport and the bullet train at Shin-Osaka Station. With its 11 schools, 16 graduate schools, 25 research institutes, centers, and facilities, four libraries, and two university hospitals, you can be sure that as a comprehensive research university it has anything and everything you ever wanted to study, including breakthroughs in cutting-edge research and technology you may have never even dreamt about! Researchers and students from all over the world are welcome, and Osaka University has its doors open wide for you!



Suita Campus

Innovative Campus

Suita campus, the largest of the three campuses and the headquarters of Osaka University, is adjacent to the north edge of Expo '70 Commemorative Park. A large number of industry-university joint projects are conducted here, and it also houses numerous world renowned research institutes, schools, and graduate schools in addition to two university hospitals. Considered to be the center of innovation at Osaka University, you will find many opportunities for research, learning, and collaboration in our centers and facilities here.



Toyonaka Campus

Vibrant Campus

The Main Library, the Museum of Osaka University, five schools and eight graduate schools are located on our Toyonaka campus. It is always bustling with students, and is considered our most lively campus. It is a great place to find friends and get in touch with the community! First and second year undergraduate students spend most of their time on this campus studying general education at the Center for Education in Liberal Arts and Sciences, and a number of graduate students and researchers study and work at the numerous graduate schools and research institutes on the campus.



Minoh Campus

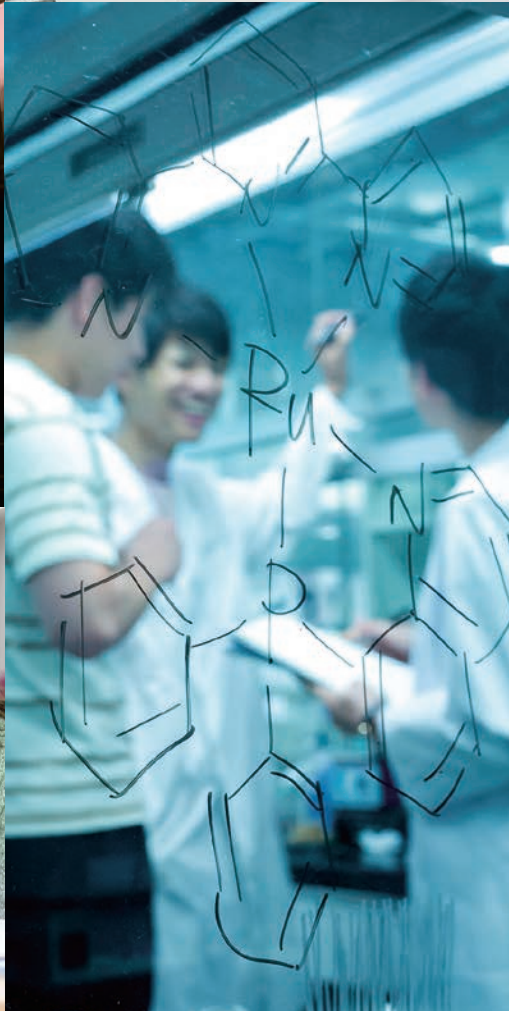
Global Campus

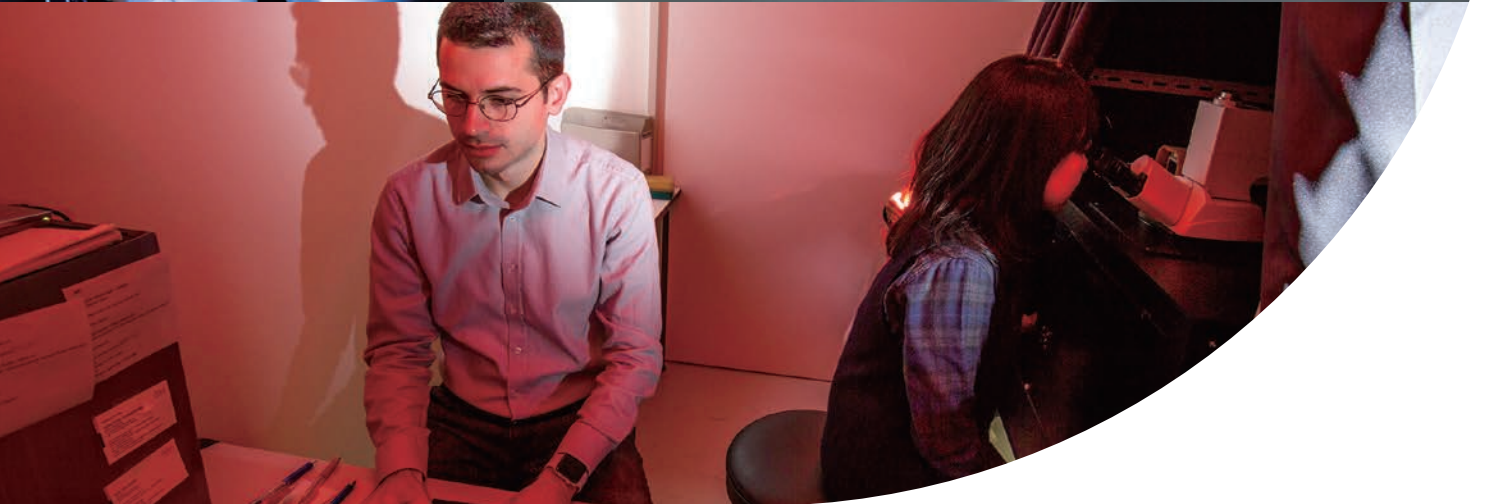
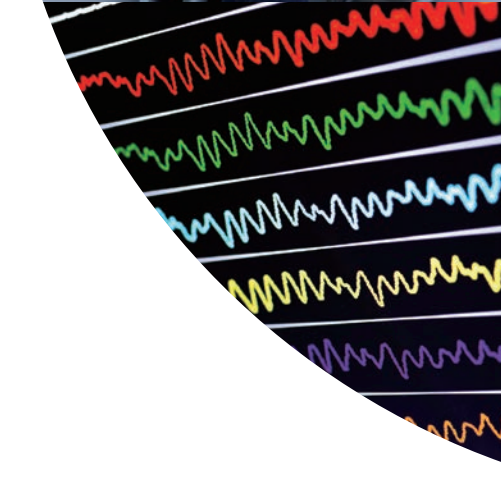
The Minoh campus is located in a peaceful area in northern Osaka. It is home to 25 language departments in our School of Foreign Studies, each of which has native speakers to guide students in language acquisition. This campus is one of the two national centers for Japanese language studies. Here, you can make connections with people from all over the world!



Osaka University prides itself on being an innovative university,
but innovation is not something that simply appears out of thin air.
It takes dedicated students and researchers
who *do it all* each day in the hope that
their discoveries will allow Osaka University to make the world a happier place.

#doitall for Research





A university is nothing without its people,
and Osaka University is comprised of a diverse group of individuals from
all over the world.
With so many cultures, backgrounds, and ways of thinking all in one place,
Osaka University provides an enriching environment for
people from all walks of life to *do it all*.

#doitall Together





Here in Osaka, life is as diverse as it gets.
From the local flavor around the university to a dynamic urban scene in
Osaka city and the surrounding Kansai region,
it could take a lifetime to truly *do it all*.

#doitall Here

Ishibashi Shopping Street

Friendly, Close, Convenient

The Ishibashi Shopping Street is just a 15-minute walk from our Toyonaka campus! It is a cozy, old-style shopping arcade, and very popular with our students and faculty. There are many cafes, bars, and restaurants, as well as general stores for your campus life.

All customers are considered "family" by the vendors, and are not shy about striking up conversations or being friendly and accommodating.



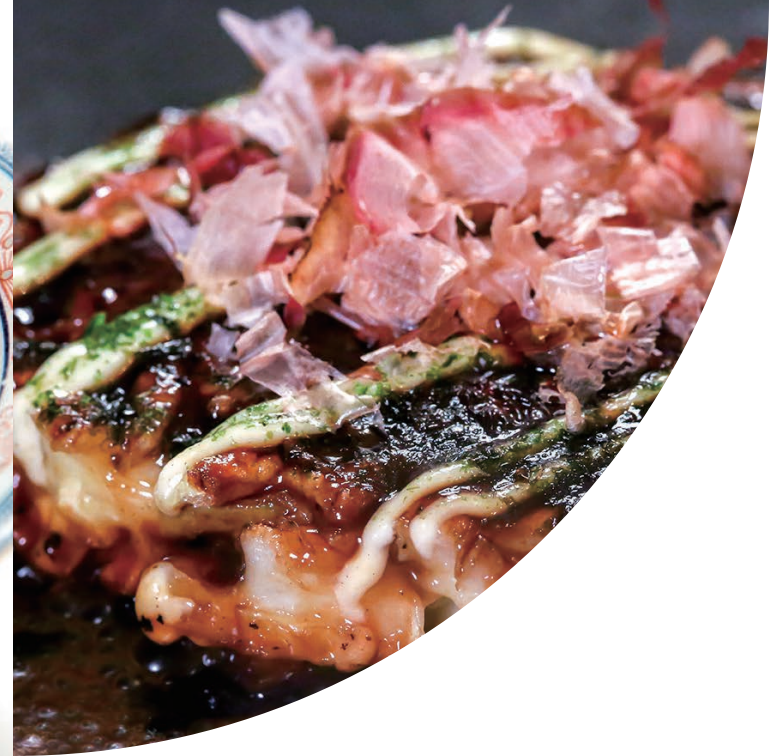
Osaka, the Kitchen of Japan

The Best Food Japan Has to Offer

Taste takoyaki and okonomiyaki, the traditional dishes of Osaka, or titillate your taste buds with dishes from all over Japan and our international fusion cuisine.

Food culture is Osaka, and the restaurants on campus are no exception. There are more than 20 restaurants, cafes, and even a fresh bakery spread out over our three campuses. You will always have a variety of choice, whether you are craving Japanese food or cuisines from around the world! We also have a selection of Halal meals. Students rave about the quality of our dishes.

Please do try our campus specialty, Tenshin-mabo: a topping of mabo-tofu over fried tenshinhan.



Life in Osaka

Support at Osaka University

Anyone moving to a new place is sure to have concerns. At Osaka University, we minimize those concerns and get you settled with orientations and counselors for dealing with daily life and issues in Japan. Notices, documents, and campus help is available in English and Japanese. We also hold networking events for researchers, exchange students, Japanese students, and people in the community to mingle and become friends. In addition, there are also dormitories and living spaces available on campus complete with staff on hand to support all aspects of your campus life.



Fascinating Osaka Facts

Data listed below is prefectural data.

2 Airports — Convenient access from both inside Japan and overseas!

8,822,977 Population (3rd in Japan) — Enough people to go around the Caspian Sea twice!

24,751 International Students (2nd in Japan) — A popular study abroad location!

11,103,445 Inbound Tourists — As many tourists as two Summer Olympic Games!

55 Universities (2nd in Japan) — Osaka takes higher education seriously!

321,900 Entrepreneurs (2nd in Japan) — Osaka’s merchant spirit is alive and well!

3rd Safest City* in the World — No need to worry about getting around at night! * City data

2,850 Okonomiyaki, Takoyaki Restaurants (1st in Japan) — No wonder it’s called the “Kitchen of Japan!”

2 Soccer Teams — Osaka’s got its own rivalry!

8 Ferris Wheels — The Redhorse OSAKA WHEEL is the tallest in Japan at 123 meters!

A 2.6 km Shopping Street — The longest in Japan, Tenjinbashisuji Shopping Street has about 600 shops!

Osaka Firsts

Osaka is home to a number of firsts, like the first comedy school in Japan, Yoshimoto Kogyo’s New Star Creation (NSC). Some world firsts in Osaka include the first automatic ticket gate (Kita-senri Station), the first commodity futures exchange (Dojima Rice Exchange), the first cup noodle (NISSIN), and the first packaged food product (Bon Curry, Otsuka Foods).

Come **#doitall** at Osaka University.



Osaka University at a Glance

Facts and Figures 52

Prizes and Awards 56

Rankings 57

Research and Education

Research Outcomes 59

Industry-University Co-Creation 60

Researchers’ Beliefs 62

Academic Programs 64

ASEAN Campuses 66

Students’ Voices 67

Global Engagement

Global Knowledge Partners 69

Global Academic Network 70

Inter-University Academic Exchange Agreements 72

Home Institutions of Researchers in International Joint Labs 74

Osaka University Basics

Global Village 77

Organization 78

History 80

Osaka University’s 90th and Osaka University of Foreign Studies’ 100th Anniversary 82

New Minoh Campus 83

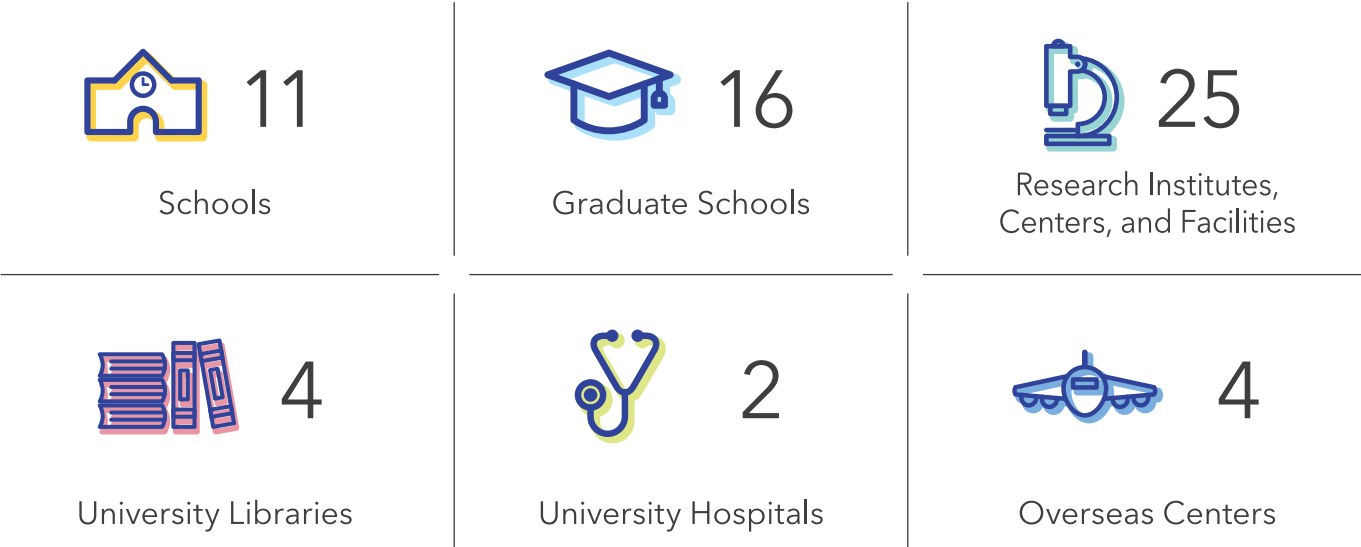
Campus Locations and Transportation 84

Osaka University at a Glance

Where You Can do it all

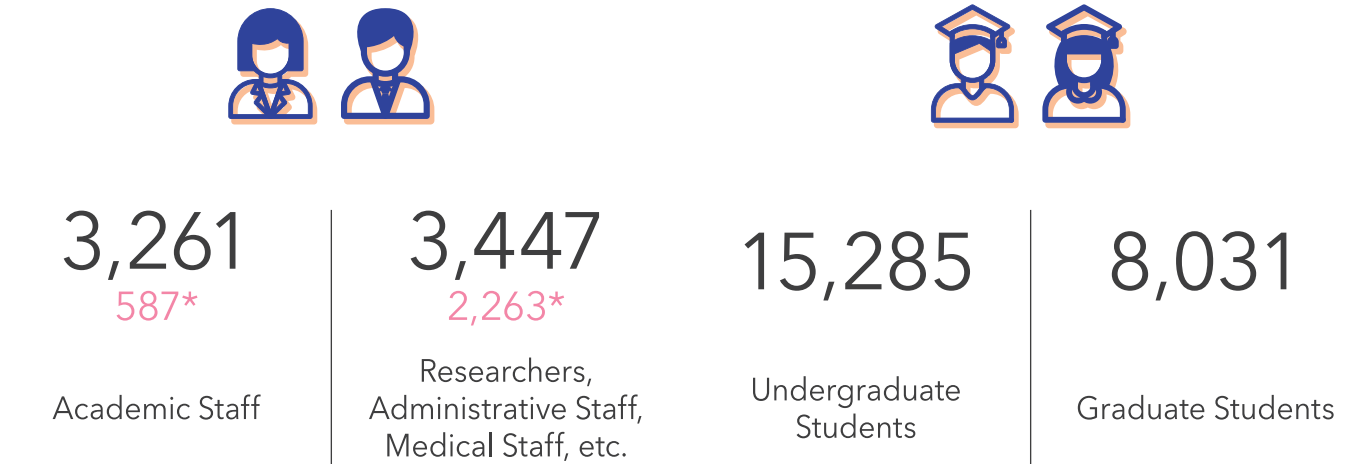
Facts and Figures

Organization

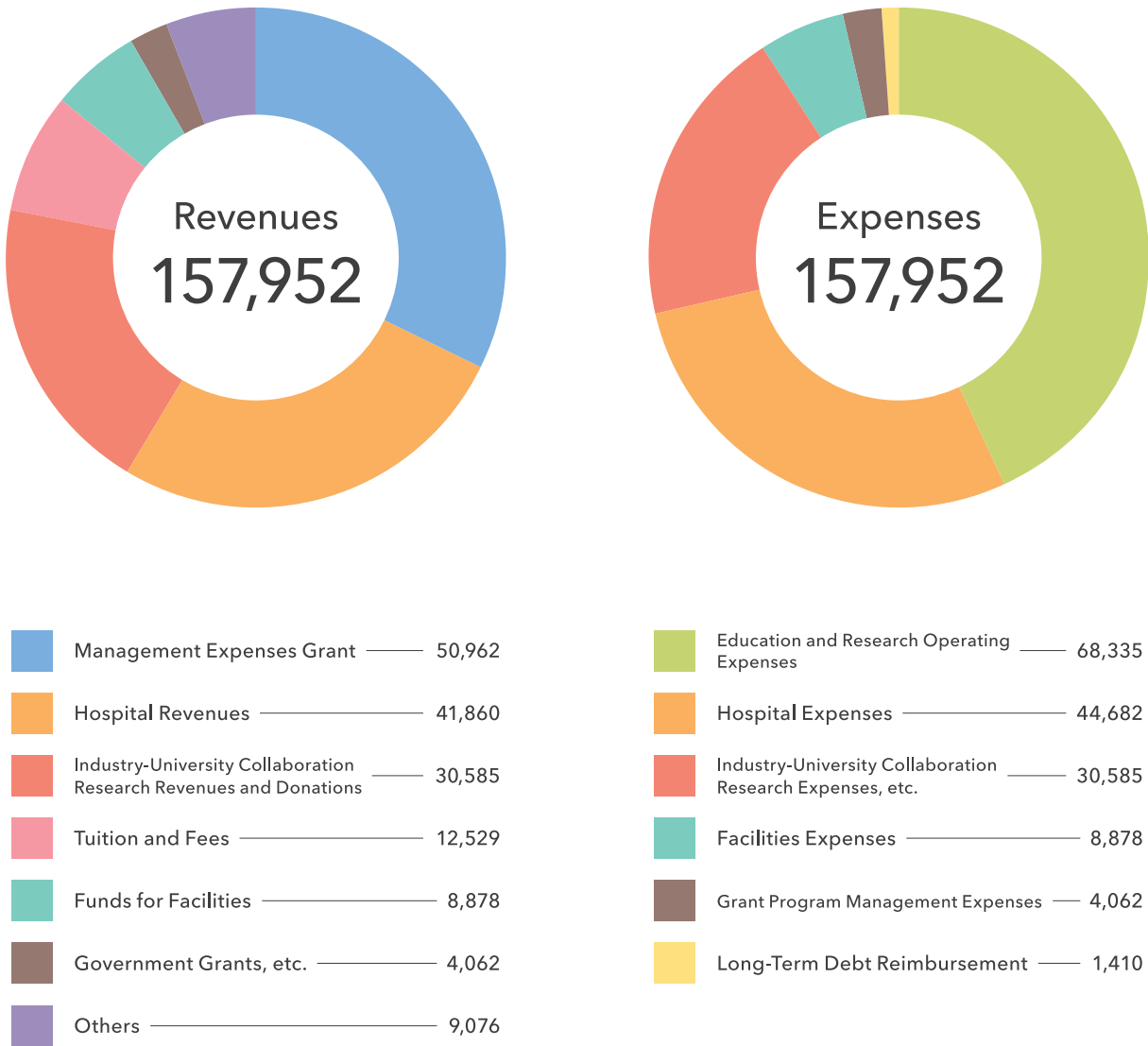


Faculty and Staff * female staff (as of May 1, 2019)

Students (as of May 1, 2019)

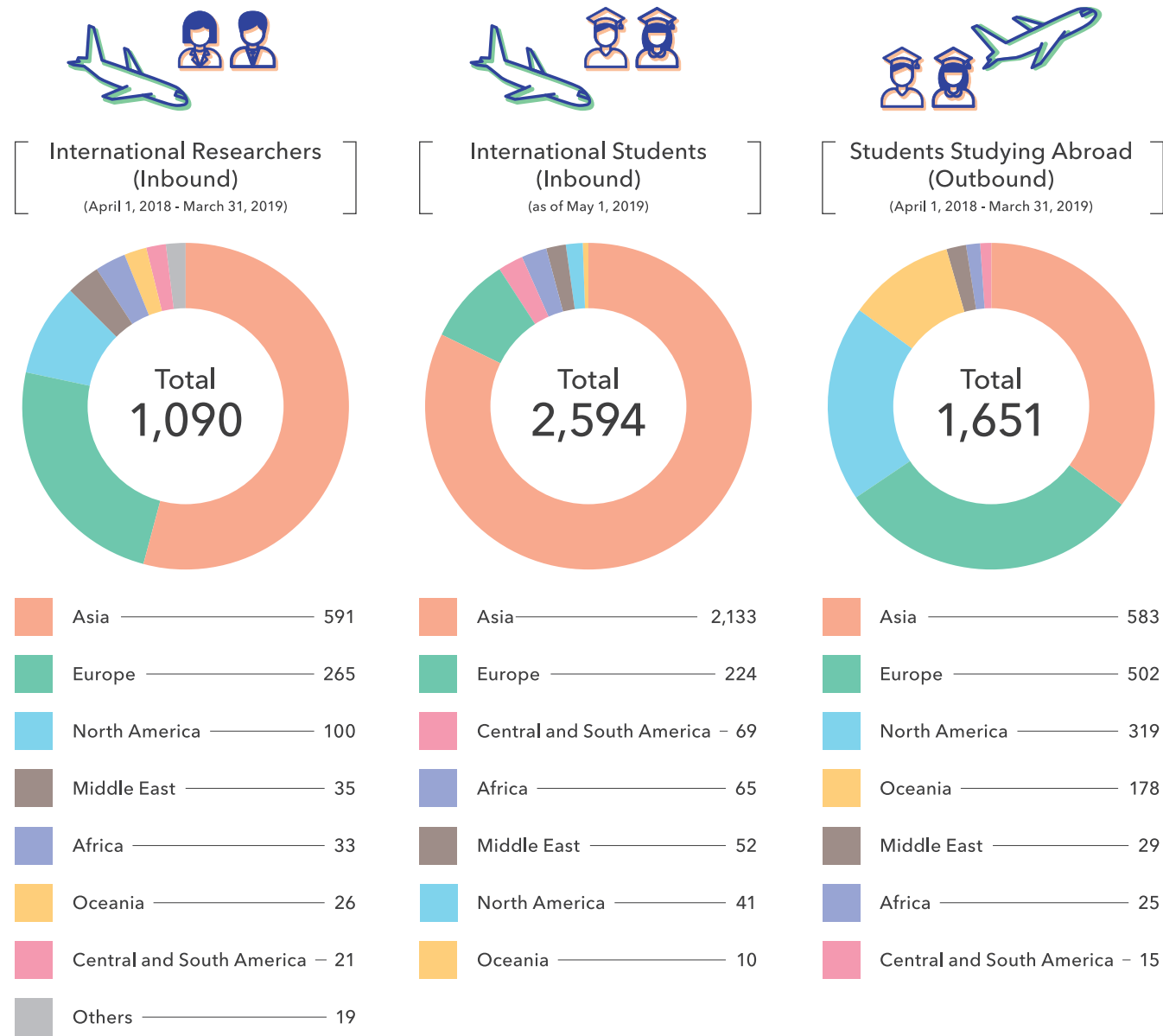


Budget FY2019, in millions of yen

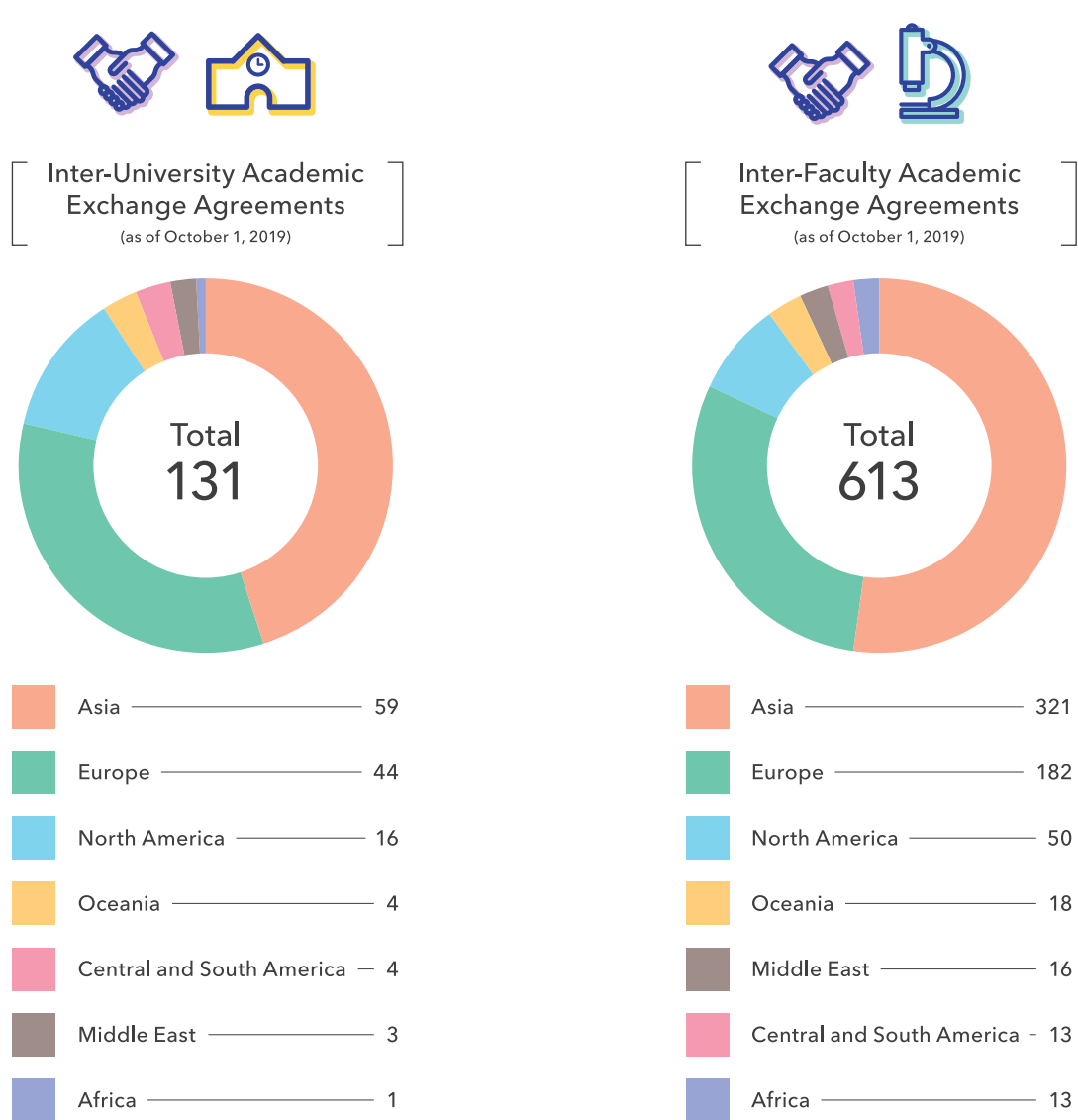


Facts and Figures

International Exchange



Academic Exchange Agreements



Prizes and Awards

Nobel Prize



YUKAWA Hideki

1949, Physics

Lasker Award



HANAFUSA Hidesaburo

1982

Gairdner International Award



AKIRA Shizuo

2011



SAKAGUCHI Shimon

2015

Wolf Prize



HAYAISHI Osamu

1986, Medicine



SATO Mikio

2002-2003, Mathematics



KISHIMOTO Tadamitsu
HIRANO Toshio

2009



SAKAGUCHI Shimon

2017

Crafoord Prize

Claude E. Shannon Award



KASAMI Tadao

1999

Japan Prize



KISHIMOTO Tadamitsu
HIRANO Toshio

2011

Kyoto Prize



OKAMOTO Yoshio


2019



MIMURA Takashi

2017


Rankings



71 (4)*

* Rank among universities in Japan.


QS World University Rankings 2020



22 (2)*

* Rank among universities in Japan.


Reuters Top 100:
The World's Most Innovative Universities
2018



31 (1)*

* Rank among universities in Japan.


Nature Index 2017 Innovation



11* (1)**

* Rank among educational institutions.
** Rank among educational institutions in Japan.

Number of International Patent Applications
World Intellectual Property Organization
Rankings 2018



3 Immunology 2 Chemistry 1 Cross-Field

Highly Cited Researchers by Clarivate Analytics
"The Most Influential Scientific Minds" for 2018

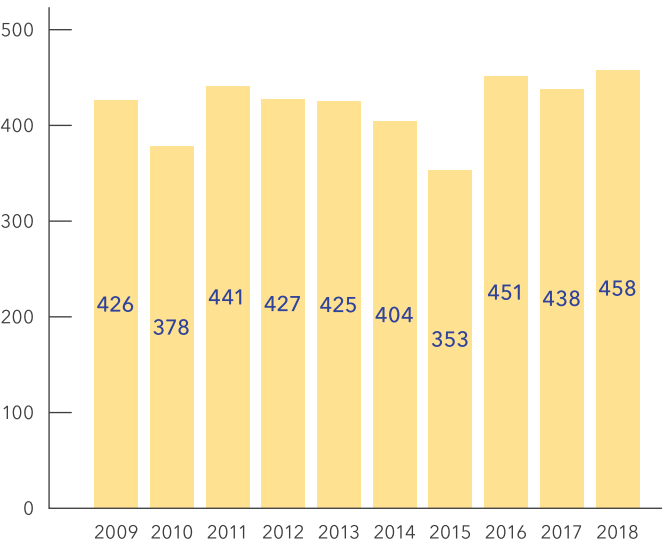


Research and Education

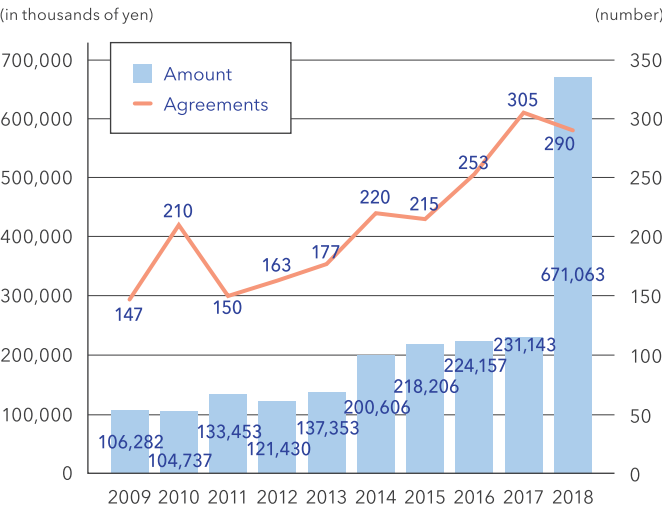
Co-Creation with Society and for Society

Research Outcomes

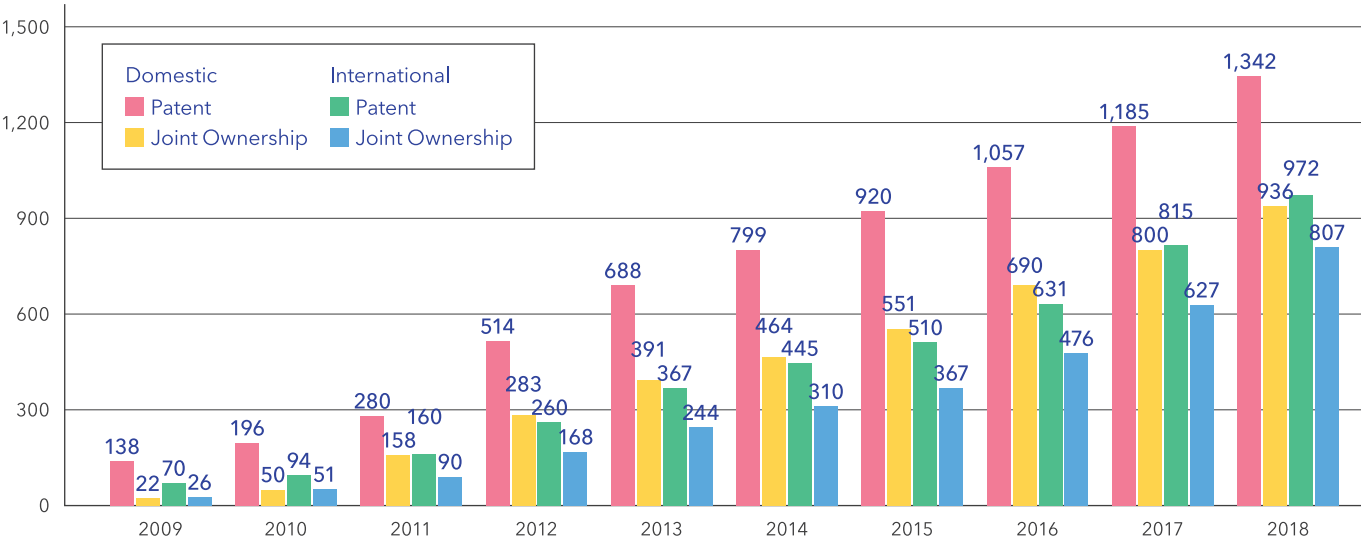
The Number of Invention Disclosures



License Agreements and Income
(including licensing, assignment and MTA)



The Number of Patents Held by Osaka University



Industry-University Co-Creation

Under the concept of "Industry on Campus," Osaka University is a pioneer in designing joint research with researchers from the business world.



42
Endowed Chairs
(as of August 1, 2019)

Endowed Chairs are education and research units run by donations from companies.



79
Joint Research Chairs
(as of August 1, 2019)

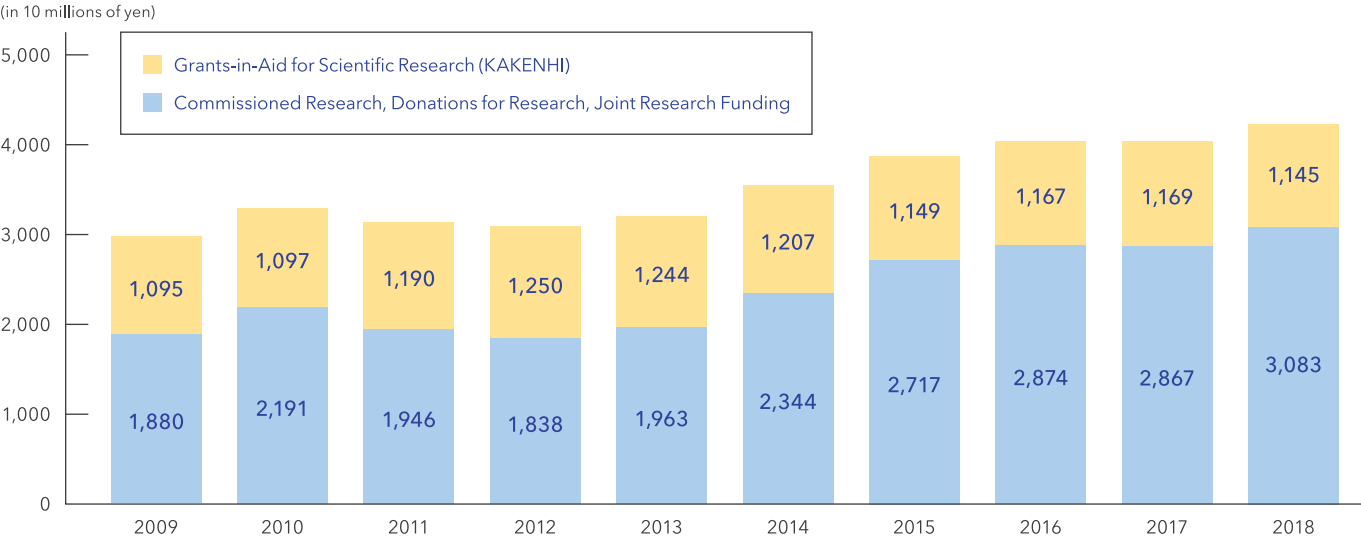
Joint Research Chairs are research units sponsored by companies who are fully dedicated to joint research on campus.



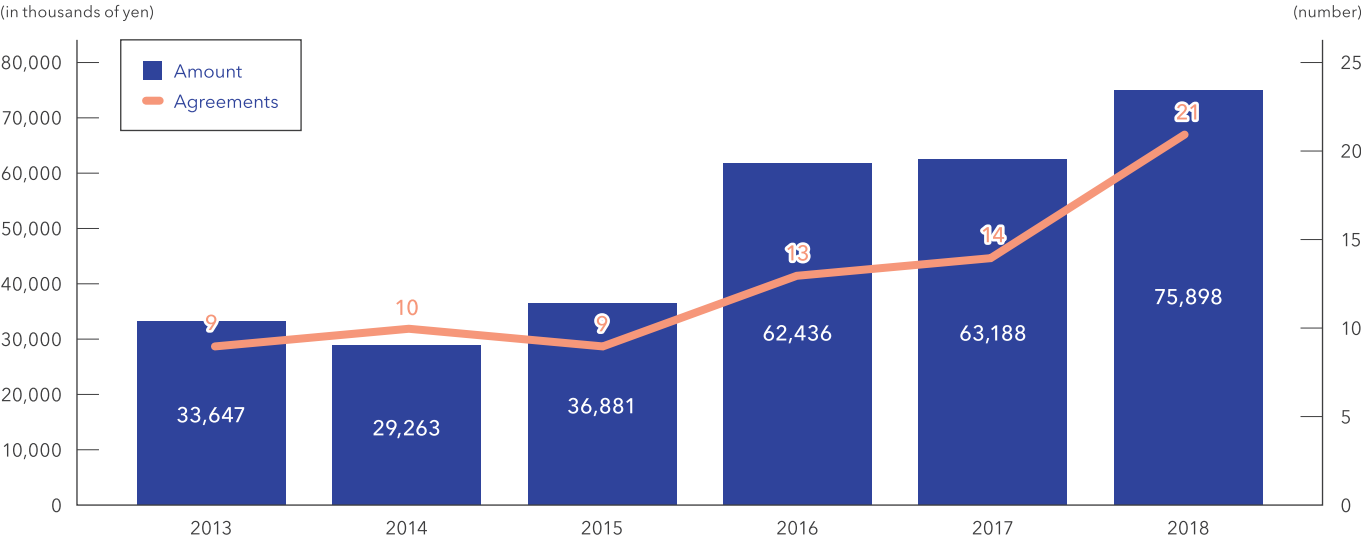
19
Research Alliance
Laboratories
(as of August 1, 2019)

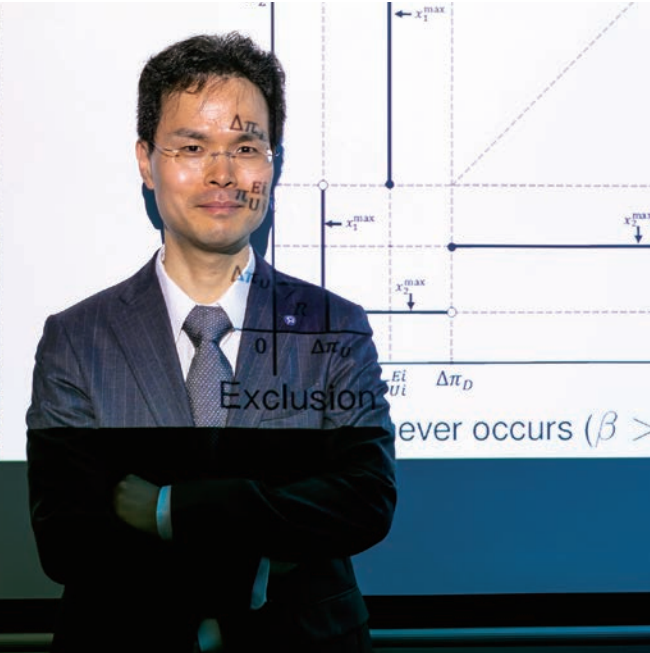
Research Alliance Laboratories are research bases for various industry-university collaborations by attracting company-based R&D organizations to Osaka University.

External Funding



Collaborative Research Agreements with Private Organizations Overseas





MATSUSHIMA Noriaki

Osaka University Distinguished Professor
Professor, Institute of Social and Economic Research

After grasping the real-world competition between firms and translating that into approaches toward economic theory research, I'm publishing the results of that analysis. I want to inspire society as I aim to analyze theories more closely based on hard facts.

The achievements of Professor MATSUSHIMA's industrial organization research theories have won the 9th Japan Academy Medal, been featured in numerous leading international scientific journals, and are being widely recognized in international academic circles worldwide. By analyzing private and also public firms in oligopolies, these analyses are able to become multilateral, which, unlike traditional research, permit new discoveries to be brought about. With his imaginative perspective, he will further analyze issues and problems that reflect current situations by using economic theories.

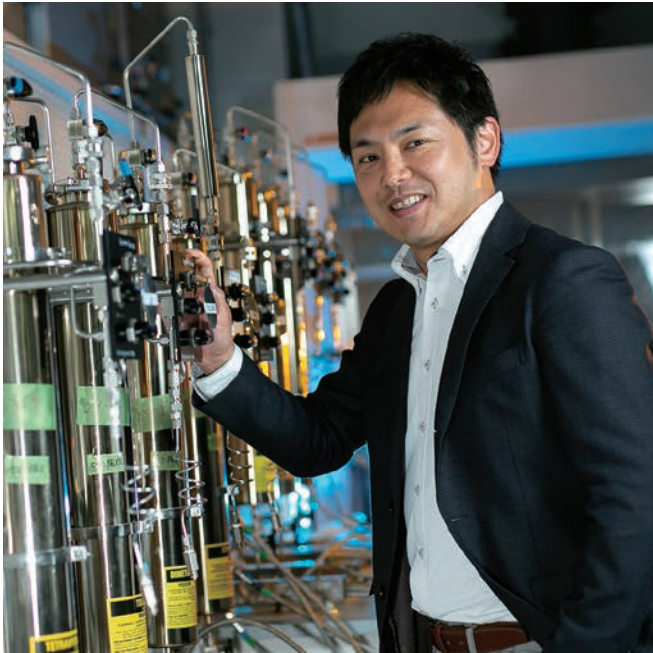


MORO Kazuyo

Osaka University Distinguished Professor
Professor, Graduate School of Medicine

I dedicate my life to developing transformative medical treatments for patients, not research for research's sake. Osaka University is great in that expertise garnered from basic research can be consistently developed for clinical research and applied treatments.

Beginning from being awarded the 13th Japan Academy Medal (2017), Professor MORO is continuing to deliver results in her remarkable research and is becoming a prominent young immunology researcher in the world. She discovered the Group 2 innate lymphoid cell (ILC2), a world's first in immunology, which can elucidate allergic responses and is expected to be able to resolve cases of diabetes and obesity. As a creative researcher, she continues to cross the borders between basic research and clinical studies to discover unexplained diseases in her research.



MASAOKA Shigeyuki

Osaka University Distinguished Professor
Professor, Graduate School of Engineering

I would like to create novel catalysts to produce energy-rich fuels and value-added chemicals from abundant sources on the earth. My ultimate goal is to develop a new energy cycle that can contribute to the sustainable development of human society.

Awarded the 13th JSPS Prize (2017), Professor MASAOKA is a researcher in artificial photosynthesis. Artificial photosynthesis is a solar energy conversion technology that mimics natural photosynthesis. His research mainly focuses on the development of "metal complexes," which are the hybrid compounds of metal ions and organic molecules, for the realization of artificial photosynthesis. He is striving to provide a breakthrough to solve the energy and environmental crisis.



YAMAMOTO Beverley Anne

Professor, Graduate School of
Human Sciences; Chair Holder, UNESCO
Chair in Global Health and Education (GHE) at Osaka University

The approach I take to education and research is that every person has a story to tell and knowledge to share if we listen properly. I look for mechanisms that can enable different people to work together to bring about positive transformations in society.

Professor YAMAMOTO's research currently has two main focuses. One is health promotion in schools. As the Chair Holder for the UNESCO Chair in GHE at Osaka University, one of her goals is to work with other leading researchers to reduce health and educational disparities. Her second area of research concerns patient and citizen participation in medical research and policymaking. Curiosity and a desire to improve people's lives drives her research. While a busy academic, she also finds time to devote herself to opera singing.



Degree Programs in English

Undergraduate Programs

School	Course/Program
Human Sciences	Human Sciences International Undergraduate Degree Program
Science	International Undergraduate Program in Science

Graduate Programs

Graduate School	Course/Program
Science	Special Integrated Science Course
	International Physics Course
Engineering	Biotechnology Global Human Resource Development Program for Industry-University Co-Creation
	Chemical Science Course
	International Priority Graduate Program on Applied and Engineering Physics
	Global Science and Engineering Course on Electric, Electronic and Information Technology
	International Program of Sustainable Energy and Environmental Engineering
	International Program of Maritime and Urban Engineering
Engineering Science	Special Program of "Engineering Science 21st Century"
Information Science and Technology	Information Technology Special Course in English

Double Degree Programs

The double degree program allows graduate students to register as a regular student at Osaka University and a foreign university simultaneously and obtain degrees from both.

Master’s Programs (as of August 1, 2019)

Asia	
China	Tongji University
Indonesia	Bandung Institute of Technology
Malaysia	University of Malaya
The Philippines	De La Salle University
Thailand	Mahidol University
	Suranaree University of Technology
Vietnam	Vietnam National University – Ho Chi Minh City
Europe	
Germany	Justus Liebig University Giessen
Kazakhstan	Al-Farabi Kazakh National University
The Netherlands	University of Groningen
	Erasmus Mundus Joint Master Degrees <ul style="list-style-type: none">• Sant’Anna School of Advanced Studies (Italy)• Eindhoven University of Technology (The Netherlands)• Aston University (UK)

Doctoral Programs (as of August 1, 2019)

Asia	
China	Peking University
	Shanghai Jiao Tong University
	Tianjin University of Traditional Chinese Medicine
Indonesia	Bandung Institute of Technology
Korea	Yonsei University
Malaysia	Universiti Sains Malaysia
	University of Malaya
The Philippines	De La Salle University
	Philippine Normal University
Singapore	Nanyang Technological University
Taiwan	National Taiwan University
	National Tsing Hua University
Thailand	Chiang Mai University
	Suranaree University of Technology
Vietnam	Vietnam National University – Ho Chi Minh City
Oceania	
Australia	Macquarie University
Europe	
France	Sorbonne University
	University of Strasbourg
Kazakhstan	Al-Farabi Kazakh National University

ASEAN Campuses

Based on the long-standing research labs in the region, these campuses aim to further tackle social issues and provide lasting education

In 2018, Osaka University established Osaka University ASEAN Campuses, and plans to sequentially establish more in four countries in the ASEAN region in cooperation with universities and institutions in those regions. Together with the ASEAN region, we will carry and nurture the next generation of global individuals, and to move forward in our mission to contribute to the quality growth of the ASEAN region, Osaka University will implement international co-creation platforms with local and Japanese businesses in each country holding one of our ASEAN Campuses.

Collaboration Fields | Bioengineering, Applied Physics, Infectious Diseases, Environmental Engineering, Halal Science, Biodiversity and Bioresource, and Japanese Language and Culture



Mahidol University

Thailand



Bandung Institute of Technology

Indonesia



Vietnam Academy of Science and Technology

Vietnam



Universiti Brunei Darussalam

Brunei Darussalam



Sultan Sharif Ali Islamic University

Brunei Darussalam



Universiti Teknologi Brunei

Brunei Darussalam

Students' Voices



TAUCHI Kentaro

4th Year Bachelor's
School of Economics
(Japan)

Roghayyeh ALIZADEH

2nd Year Doctor's
Graduate School of Engineering Science
(Iran)

With many distinguished professors, lecturers, and diverse classes, Osaka University is one of the best universities for your studies. Professors always went out of their way to seriously answer my questions. The School of Economics allowed me to take classes in other courses and make friends with different backgrounds to diversity my studies. Osaka University gave me the chance to study abroad at the University of London where I could also take development economics and econometrics classes. These experiences allowed me to have a strong command of English, math and economics, all of which I hope to fully utilize with a global insurance company after graduation.

Osaka University gives so many chances for PhD students to participate in international conferences and events to introduce themselves and the university, learn about other people and their research progress, and make connections for increasing collaboration. It is one of the best universities for optimization and operations research, and I have been able to expand my knowledge and capabilities while receiving heartfelt support from supervisors and the student support office. The environment here allows me to focus on my studies, but also provides facilities for sports and fun events, so I can easily separate research from recreation.



Global Engagement

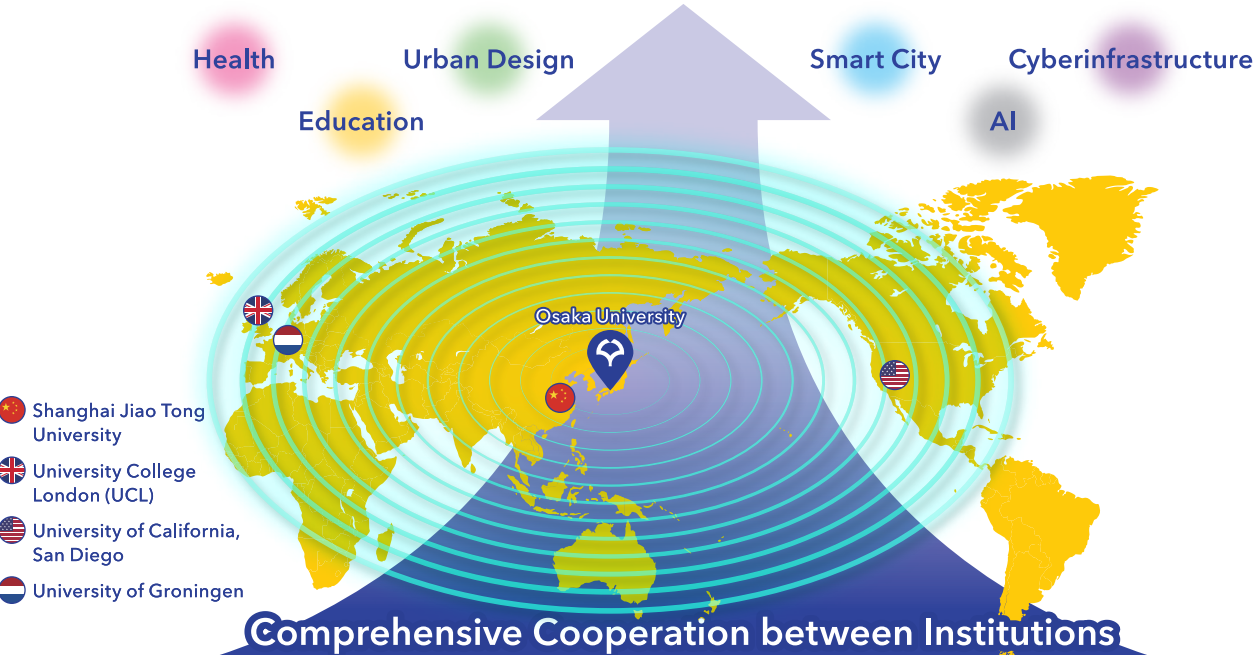
Strong Connections with International Partners

Global Knowledge Partners (as of January 1, 2020)

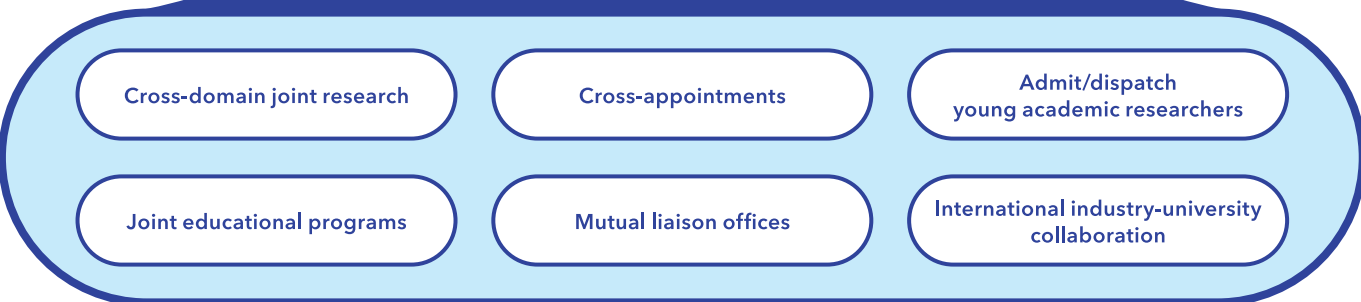
Develop strategic partnerships with overseas institutions to impact global challenges

Osaka University explores deeper routes of collaboration through joint research and education with our Global Knowledge Partners and four of our Overseas Centers to approach global issues, synergize through discovery across all fields of academia, and make an impact on resolutions to those issues worldwide.

Seeking Solutions to Social Challenges Worldwide

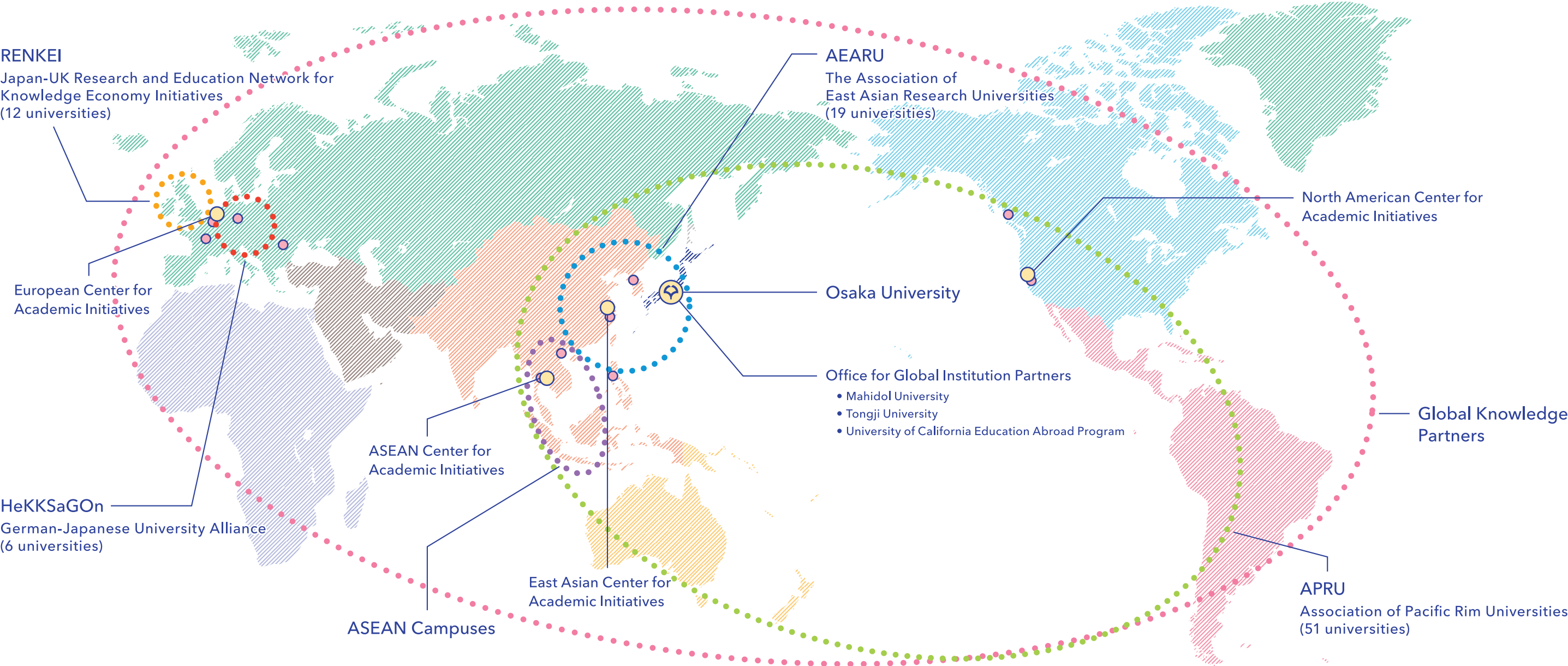


Comprehensive Cooperation between Institutions



Global Academic Network (as of October 1, 2019)

Osaka University Overseas Centers Overseas Departmental Centers



Inter-University Academic Exchange Agreements (as of Octoboe 1, 2019)

Europe

- Austria**
 - University of Vienna
- Belgium**
 - IMEC
- Denmark**
 - University of Copenhagen
 - University of Southern Denmark
- Finland**
 - Åbo Akademi University
 - University of Helsinki
- France**
 - Aix-Marseille University
 - Communauté Universit  Grenoble Alpes
 -  cole Polytechnique
 - The National Center for Scientific Research (CNRS)
 - Sorbonne University
 - Universit  Paris-Saclay
 - University of Bordeaux
 - University of Strasbourg
- Germany**
 - Bielefeld University
 - Friedrich-Alexander-Universit t Erlangen-N rnberg
 - Goethe University Frankfurt
 - Heidelberg University
 - Karlsruhe Institute of Technology
 - Ludwig-Maximilians-Universit t M nchen
 - Ruhr-Universit t Bochum
 - RWTH Aachen University
 - Technical University of Munich
 - Technische Universit t Berlin

- University of Augsburg
- The University of G ttingen
- Hungary**
 - E tv s Lor nd University
- The Netherlands**
 - Delft University of Technology
 - University of Groningen
- Russia**
 - Russian Academy of Sciences
 - Saint Petersburg University
- Spain**
 - Universidad Aut noma de Madrid
 - University of Valladolid
- Sweden**
 - Karolinska Institutet
 - KTH Royal Institute of Technology
 - University of Gothenburg
- Switzerland**
 -  cole Polytechnique F d rale de Lausanne (EPFL)
 - Eidgen ssische Technische Hochschule Z rich
- UK**
 - King's College London
 - University College London (UCL)
 - University of Durham
 - University of Leeds
 - The University of Nottingham
 - The University of Sheffield

Middle East

- Israel**
 - The Hebrew University of Jerusalem

- Qatar**
 - Qatar University
- Saudi Arabia**
 - King Abdulaziz University

Africa

- Egypt**
 - Alexandria University

Oceania

- Australia**
 - Australian National University
 - Monash University
 - The University of Adelaide
 - The University of Queensland

Asia

- Brunei Darussalam**
 - Sultan Sharif Ali Islamic University
 - Universiti Brunei Darussalam
 - Universiti Teknologi Brunei
- China**
 - Beijing Normal University
 - The Chinese University of Hong Kong
 - Fudan University
 - The Hong Kong University of Science and Technology
 - Hunan University
 - Nanjing University
 - Northeastern University
 - Peking University
 - Shanghai Jiao Tong University
 - Shenzhen University
 - Tongji University

- Tsinghua University
- The University of Hong Kong
- Wuhan University
- Xi'an Jiaotong University
- Zhejiang University
- India**
 - Indian Institute of Technology, Hyderabad
- Indonesia**
 - Airlangga University
 - Bandung Institute of Technology
 - Universitas Gadjah Mada
 - Universitas Indonesia

- Korea**
 - Changwon National University
 - Chonnam National University
 - Chung-Ang University
 - Chungnam National University
 - Daegu Gyeongbuk Institute of Science & Technology (DGIST)
 - Gyeongsang National University
 - Hanyang University
 - Pusan National University
 - Seoul National University
 - Yonsei University

- Mongolia**
 - National University of Mongolia

- Myanmar**
 - University of Yangon

- The Philippines**
 - Ateneo de Manila University
 - De La Salle University
 - University of the Philippines

- Singapore**
 - Nanyang Technological University
 - National University of Singapore
- Taiwan**
 - National Cheng Kung University
 - National Chiao Tung University
 - National Taiwan University
 - National Tsing Hua University

- Thailand**
 - Chiang Mai University
 - Chulalongkorn University
 - Department of Medical Sciences, Ministry of Public Health
 - Kasetsart University
 - King Mongkut's University of Technology Thonburi
 - Mahidol University
 - Thammasat University

- Vietnam**
 - Can Tho University
 - Hanoi Medical University
 - Hanoi University of Science and Technology
 - Vietnam Academy of Science and Technology
 - Vietnam Japan University
 - Vietnam National University, Hanoi
 - Vietnam National University-Ho Chi Minh City

North America

- Canada**
 - McMaster University
 - TRIUMF
 - The University of British Columbia
 - University of Toronto

- USA**
 - Cornell University
 - Lawrence Livermore National Laboratory
 - Nazareth College of Rochester
 - Purdue University
 - Rice University
 - Texas A&M University
 - University of Georgia
 - University of California
 - University of California, Berkeley
 - University of California, San Diego
 - University of Washington
 - Wesleyan College

Central and South America

- Brazil**
 - University of Campinas
 - University of S o Paulo
- Mexico**
 - National Autonomous University of Mexico
- Peru**
 - Pontifical Catholic University of Peru

Home Institutions of Researchers in International Joint Labs (as of October 1, 2019)

International Joint Labs bring researchers from overseas together for collaborative research at Osaka University.
Please find out outcomes of International Joint Labs at: resou.osaka-u.ac.jp/en/highlight

Asia	
China	Nanjing Audit University
	National Center for Nanoscience and Technology, Chinese Academy of Science
	Northeast Normal University
	North University of China
	Peking University
	Shanghai Jiao Tong University
	The University of Hong Kong
India	Gujarat National Law University
	Indian Institute of Technology, Hyderabad
	Tata Institute of Fundamental Research
Indonesia	Indonesian Institute of Sciences
Korea	Chonnam National University
	Daegu Gyeongbuk Institute of Science & Technology (DGIST)
	Kookmin University
	Seoul National University
Malaysia	Universiti Sains Malaysia
The Philippines	University of the Philippines
Singapore	Singapore Management University
Taiwan	Academia Sinica
	National Chiao Tung University
	National Taiwan University
Thailand	Chulalongkorn University
	King Mongkut’s University of Technology Thonburi

	National Center for Genetic Engineering and Biotechnology
Vietnam	Hanoi University of Science and Technology
Oceania	
Australia	European Molecular Biology Laboratory at Monash University
	Monash University
	Royal Melbourne Institute of Technology University
North America	
Canada	National Research Council Canada
	TRIUMF
	University of Montreal
	University of Victoria
	University of Waterloo
USA	Baylor College of Medicine
	California Institute of Technology
	Iowa State University
	Johns Hopkins University
	Purdue University
	Rice University
	University of California, Davis
	University of California, Los Angeles
	University of California, San Diego
	The University of Chicago
	University of Hawaii at Manoa

	University of Kentucky
	University of Rochester
	University of Texas at Austin
Europe	
Austria	Johannes Kepler University Linz
Czech Republic	Extreme Light Infrastructure - Nuclear Physics
	Masaryk University
Denmark	University of Copenhagen
Finland	Åbo Akademi University
	University of Helsinki
France	École Centrale de Nantes
	École Normale Supérieure de Rennes
	École Polytechnique / The National Center for Scientific Research (CNRS)
	Normandy University
	Sorbonne University
	Université Paris Nanterre
Germany	University of Strasbourg
	Frankfurt University of Applied Sciences
	Heinrich Heine University Düsseldorf
	Leibniz Universität Hannover
	Leibniz-Zentrum Allgemeine Sprachwissenschaft
	Physikalisch-Technische Bundesanstalt
	University Medical Center Göttingen
	University of Münster

Hungary	Institute for Solid State Physics and Optics, Wigner Research Centre for Physics, Hungarian Academy of Sciences
Italy	Istituto Italiano di Tecnologia
	University of Naples Federico II
Russia	Russian Academy of Sciences
Slovakia	Slovak Academy of Sciences
Spain	Carlos III University of Madrid
	Universidad Politécnica de Madrid
Sweden	Ersta Sköndal Bräcke University College
	Uppsala University
Switzerland	Eidgenössische Technische Hochschule Zürich
	University of Lausanne
The Netherlands	University of Amsterdam
	University Medical Center Groningen
UK	Cardiff University
	Imperial College London
	King’s College London
	The University of Manchester
	University College London (UCL)
University of Oxford	
Middle East	
Turkey	Boğaziçi University
Africa	
Morocco	Moroccan Foundation for Advanced Science, Innovation and Research

Osaka University Basics

A World-Leading Innovative University

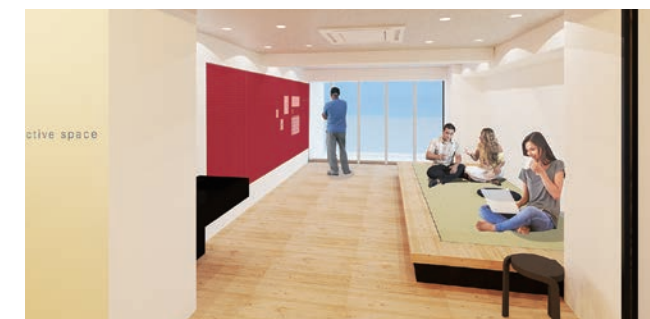
Global Village

The Global Villages are set to be integrated facilities with student dormitories, staff housing, and mixed-type living units for students from Japan and overseas to interact together. This new living environment will nurture diverse individuals and give rise to mutual respect and cultural understanding to develop globally-focused education, research, and innovation.

Global Village Tsukumodai* (October 2020) *CG



Global Village Minoh* (April 2021) *CG



Organization

Schools/Faculty

Letters
Human Sciences
Foreign Studies
Law
Economics
Science
Medicine
Dentistry
Pharmaceutical Sciences
Engineering
Engineering Science

Graduate Schools

Letters
Human Sciences
Law and Politics
Economics
Science
Medicine
Dentistry
Pharmaceutical Sciences
Engineering
Engineering Science
Language and Culture
International Public Policy
Information Science and Technology
Frontier Biosciences
Law School
Child Development

University Libraries

Main Library
Life Sciences Library
Science and Engineering Library
International Studies Library

University Hospitals

Osaka University Hospital
Osaka University Dental Hospital

Research Institutes, Centers, and Facilities

Research Institute for Microbial Diseases
The Institute of Scientific and Industrial Research
Institute for Protein Research
Institute of Social and Economic Research
Joining and Welding Research Institute
Institute of Laser Engineering
Low Temperature Center
Research Center for Ultra-High Voltage Electron Microscopy
Research Center for Environmental Preservation
Center for International Education and Exchange
International Center for Biotechnology
Research Center for Solar Energy Chemistry
The Museum of Osaka University
Health and Counseling Center
Global Center for Medical Engineering and Informatics
Center for Mathematical Modeling and Data Science
Center for Scientific Instrument Renovation and Manufacturing Support
Center for Japanese Language and Culture
Institute for NanoScience Design
Intellectual Property and Legal Practice Center
Research Center for Nuclear Physics
Cybermedia Center

Administration Bureau
Co-Creation Bureau
Social Solution Initiative

Education and Research Support Organizations

Institute for Advanced Co-Creation Studies
Institute for Transdisciplinary Graduate Degree Programs
Institute for Open and Transdisciplinary Research Initiatives
Institute for Datability Science
Institute for Radiation Sciences
Center for Education in Liberal Arts and Sciences
Center for Multilingual Education
Center for the Study of Higher Education and Global Admissions
Center for Gender Equality Promotion
Center for the Study of Co* Design
Center for Global Initiatives
Tekijuku Commemoration Center
Kaitokudo for the 21st Century
Office for Information and Communications Technology Services
Office for Information Security
Campus Sustainability Office
Department for the Administration of Safety and Hygiene
Office of the General Counsel

Osaka University
Nakanoshima Center

International Advanced
Research Institute

Immunology Frontier
Research Center

Institute for Advanced
Interdisciplinary Research

Center for Information and
Neural Networks
Osaka University-RIKEN Center
for Science and Technology

Overseas Centers

North American Center for Academic Initiatives
European Center for Academic Initiatives
ASEAN Center for Academic Initiatives
East Asian Center for Academic Initiatives

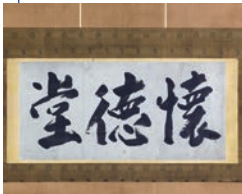


History

Osaka University’s roots can be traced to Kaitokudo and Tekijuku, two academies that delivered front-line scholarship during the Edo period (1603-1867). This tradition is inherent in Osaka University today which continues to achieve cutting-edge research results worthy of international recognition and provide society with distinguished researchers and professionals.

1724 Kaitokudo

Kaitokudo was an academy founded in 1724 by Osaka merchants. It contributed to the development of education and business morality for the remaining 140 years of the Edo period, playing an important role in education in Osaka as a civic and liberal arts college.



1838 Tekijuku

Tekijuku was a private academy in Osaka founded in 1838 by OGATA Koan, a physician and renowned educator. Young minds from all over Japan gathered there to learn, and many of them later played leading roles in the modernization of Japan during the Meiji period.

1931 Osaka Imperial University

Osaka Imperial University was founded in 1931 with passionate support from the local government, the Kansai business community, and the citizens of Osaka as a citizen-led imperial university.



Celebrating the approval of Osaka Imperial University Foundation Plan by the House of Peers (March 1931, at Tokyo Station)



1949
Osaka University



2004
National University Corporation
Osaka University

2007

Integration of Osaka University and
Osaka University of Foreign Studies

Established originally as Osaka School of Foreign Languages in 1921, it was founded with the money donated to the government by an Osaka-based businesswoman who was passionate about establishing a "school capable of nurturing internationally-minded people in Osaka." Thus, Osaka School of Foreign Studies shares a similar background to that of Osaka University.





Connect
Coalesce
Compassion

2021

90thOU | 100thOUFS

2021

90th Anniversary of
Osaka University

100th Anniversary of
Osaka University of
Foreign Studies

Osaka University’s 90th and Osaka University of Foreign Studies’ 100th Anniversary

For the 90th anniversary of Osaka University and 100th anniversary of Osaka University of Foreign Studies, Osaka University will be holding a number of attractive events and symposiums on each campus.

- > Memorial ceremony/celebration
- > Symposiums/lectures on Nakanoshima campus
- > Lectures/speech commemorating the completion of the new Minoh campus
- > International symposium with guest lecturers
- > OU research and industry-academia-government collaboration event
- > Student events
- > Publications on OU history and historical exhibition



About the logo

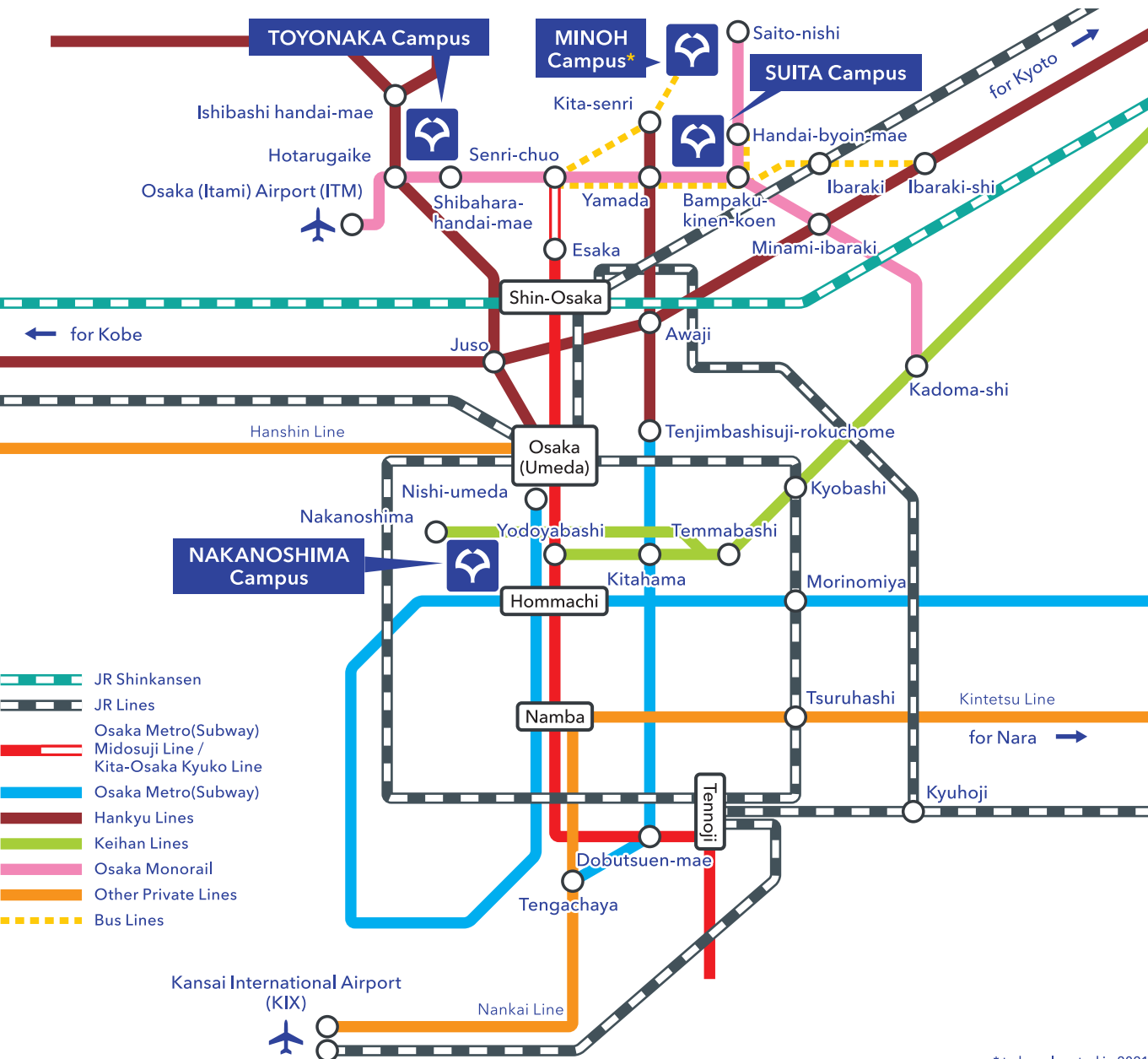
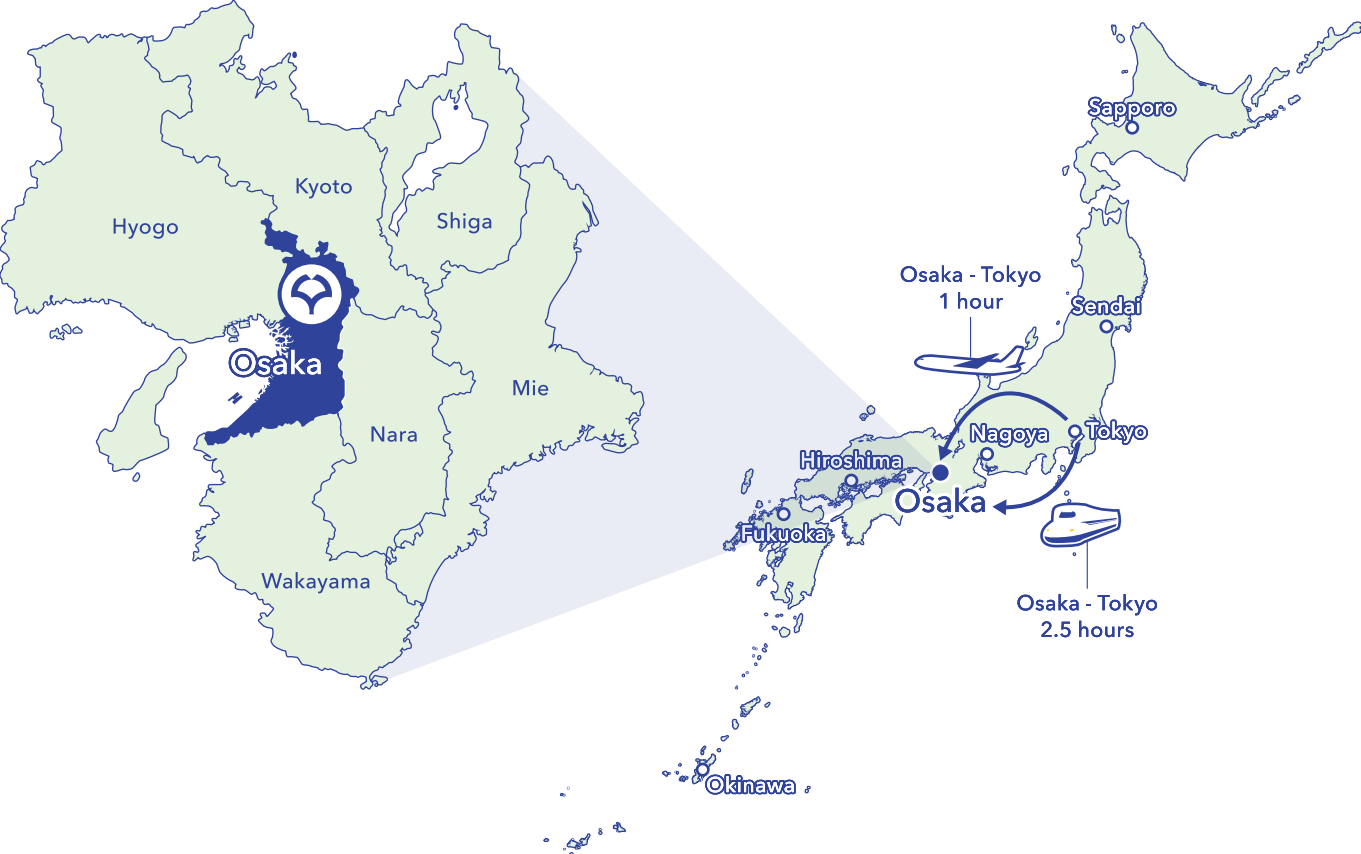
In 2021, Osaka University (OU) will celebrate its 90th anniversary, and Osaka University of Foreign Studies (OUFS) will celebrate the 100th anniversary of its founding in the same year. These two schools are expressed in this logo as a bird flying toward the future. The straight line featured in the body of the bird represents the timeline of OU, and the point where the body and wings meet signifies the integration of OU and OUFS in 2007. The curved lines in this design also resemble two tied ribbons fluttering in the breeze. This is a visual expression of the slogan for this dual anniversary: "Connect, Coalesce, Compassion."

New Minoh Campus

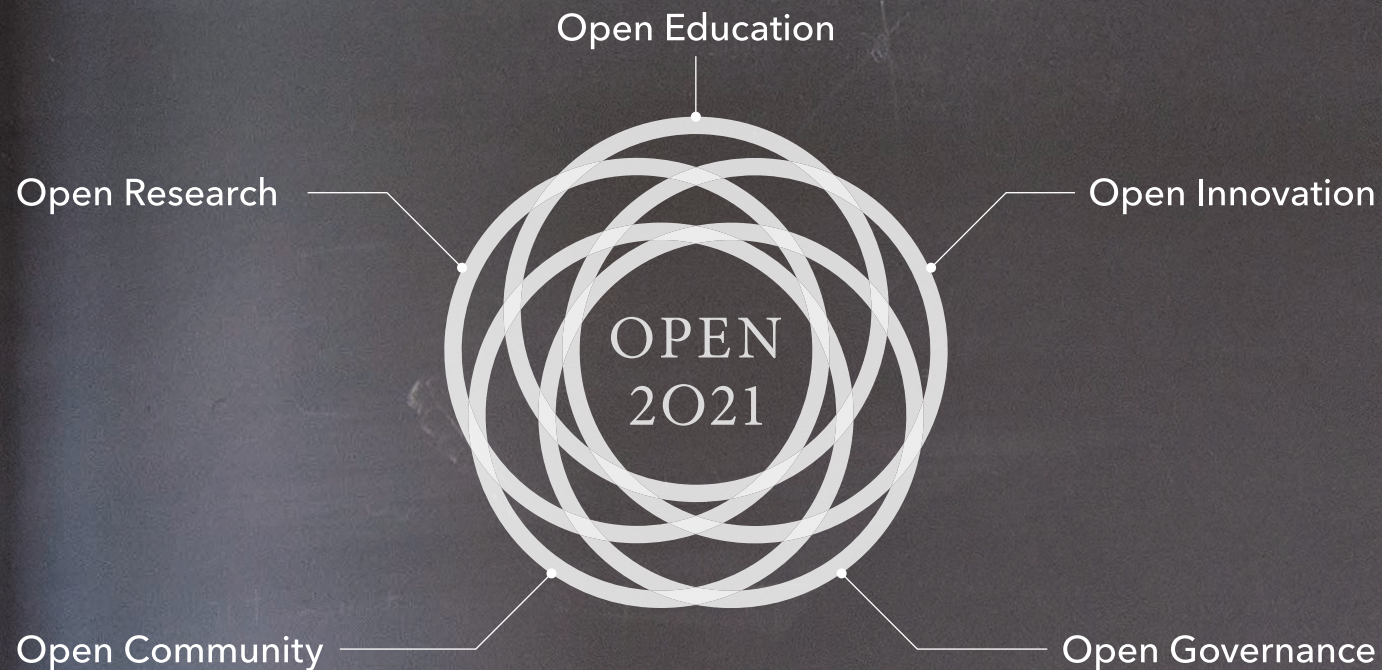
The new Minoh campus opens in April 2021 with a dormitory, a library, and an education and research facility for the Graduate School of Language and Culture, School of Foreign Studies, and Center for Japanese Language and Culture. This new campus will become a base for research on the world's languages, cultures, and societies.



Campus Locations and Transportation



* to be relocated in 2021



Open Education

Train students to search for the truth and explore knowledge beyond university campuses in the larger society. Achieve Open Education by integrating resources in the university with those in civil society, government and industry to discover new knowledge relevant and meaningful to society.

Open Research

Support Open Research by respecting the freedom and encouraging the passion of individual researchers. Establish academic partnerships across the world so as to cultivate new frontiers of knowledge.

Open Innovation

Initiate a fundamental shift from "industry-university collaboration" to "industry-university co-creation." Discover new themes and tasks in basic science by assessing emerging social demands. Undertake Open Innovation through which to create new social values.

Open Community

Help solve local and global issues and contribute to optimal social development through our strength in science, culture, art and medicine. Create an Open Community, a social space where diverse knowledge and people meet and interact.

Open Governance

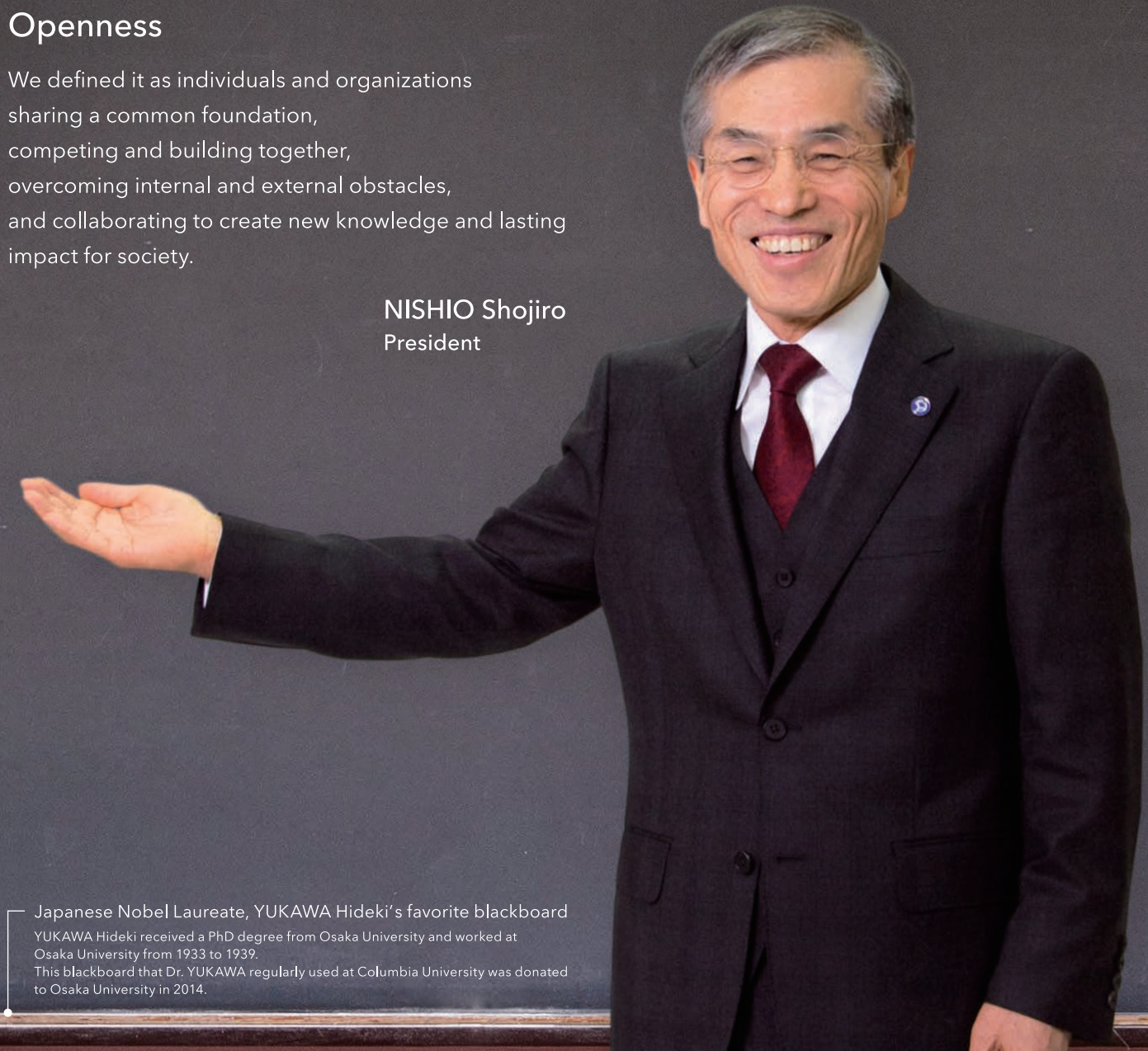
Exceed the expectations of society through continual reform and improvement by maximizing the agency of every member of the university. Implement Open Governance: a solid and transparent university management system that balances leadership and consensus.

Be the member of Osaka University.

Openness

We defined it as individuals and organizations sharing a common foundation, competing and building together, overcoming internal and external obstacles, and collaborating to create new knowledge and lasting impact for society.

NISHIO Shojiro
President



Japanese Nobel Laureate, YUKAWA Hideki's favorite blackboard
YUKAWA Hideki received a PhD degree from Osaka University and worked at Osaka University from 1933 to 1939. This blackboard that Dr. YUKAWA regularly used at Columbia University was donated to Osaka University in 2014.



OSAKA UNIVERSITY

1-1 Yamadaoka, Suita, Osaka 565-0871 Japan

www.osaka-u.ac.jp

Published by: Osaka University

Produced by:
International Affairs Division,
Department of International Affairs

Created by: 