

International students

Postgraduate Study 2019



Welcome to Newcastle

This Guide is for international students who are interested in either postgraduate taught courses or research opportunities. For a full list of courses and pricing please refer to the separate *International Postgraduate Course Guide 2019*.

If you are a UK or EU student then please refer to our website for more information or request a copy of our UK/EU Guide at www.ncl.ac.uk/postgraduate

Why study in the UK?



Global economy

One of the biggest economies in the world, the UK is a global player on the international stage. We attract a large number of businesses from large multinational corporations to creative entrepreneurial start-ups

Cost effective

You will save time and money as most UK Masters' degrees are studied over one year, enabling you to fast track your career

Transport hub

We are a gateway to Europe, with exceptional air, sea and rail transport links, providing you with the opportunity to easily explore other countries and cultures

Teaching quality

Our education system has a enviable reputation for teaching and research quality. Our emphasis is on critical thinking, analysis and decision making, creating a firm foundation for tomorrow's leaders and innovators

Industry links

The UK is a world leader in business and industry, providing access to a wide range of people, companies and sectors

English speaking

You will hear, speak, read and write English every day. There is no better way to learn the language

Student satisfaction

The UK has the highest international student satisfaction ratings for English-speaking countries, with over 90% of students happy with their experience (International Student Barometer survey, Autumn 2017)

Rich heritage

Popular modern culture combines with a rich traditional heritage, to create a unique environment in which to live and learn

Streamlined application

Newcastle University is piloting the new UK government streamlined visa application process for international students wanting to study a full-time Master's course

Contents

04

About us

Why choose Newcastle?	06
A global university	08
Teaching excellence	10
Our Newcastle campus	12
Accommodation	14
Our city	16

20

Supporting you

Funding	22
Facilities and resources	24
Extra support	26
Award-winning careers support	28
Your journey to Newcastle	32
English Language	36
INTO Newcastle University	37

38

Study here

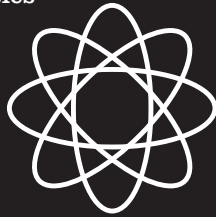
Studying in the UK	40
Taught Masters' courses: the academic year	42
PG life	44
Your research journey	46
Groundbreaking research	48
How to apply	50
Our taught courses	53
Our research choices	53
Meet, explore, visit	55
Getting here	56



About us

Why choose Newcastle?

A founding member of the Russell Group, 24 leading research-intensive UK universities



The best university employability strategy
(TARGETjobs Awards, 2017)

Top 10 UK university for sport



(British Universities and Colleges Sport (BUCS) rankings, 2017–18)

Teaching enriched by our world-leading research



Global alumni community – we have over 200,000 graduates in over 180 countries and independent states

World top 150 university

We are now ranked joint 141st in the world
(QS World University Rankings, 2019)

£100 million



£100 million planned to further improve our outstanding facilities and IT support for our students' learning

95% satisfaction rate for expert lecturers and 90% satisfaction rate for quality lectures

(International Student Barometer survey, Autumn 2017)



Top 10

in Europe for teaching excellence
(Times Higher Education Europe Teaching Rankings, 2018)

Top 10 in the UK for student experience for the fourth year in a row



(Times Higher Education Student Experience Survey, 2015–2018)

11th

in the UK for academic experience

(Times Higher Education Student Experience Survey, 2018)

94% satisfaction rate for our Careers Service

(International Student Barometer survey, Autumn 2017)



16th in the UK for research power

(Research Excellence Framework, 2014)

Gold award in TEF – the highest UK government rating possible
(Teaching Excellence Framework, 2017)



A global university



Newcastle University is a welcoming, internationally focused institution. In recent years, we have developed a presence in three similarly vibrant and globally connected locations – London, Singapore and Malaysia. These provide both a global presence and opportunities for knowledge exchange that we benefit from when developing partnerships, perspectives, innovations and solutions.

We are recognised internationally for our work across broad multidisciplinary areas, including ageing and health; cities, culture and the creative arts; data and energy; as well as for our outstanding single disciplines. Our global geographic reach, combined with an outstanding reputation for academic excellence and high graduate employability, ensures we are a first-choice destination for students from around the world.

Newcastle University

Newcastle

Over its 180-year history, Newcastle University has brought together the best of tradition and modernity. Offering an international global community and world-class culture, we provide a first-class learning environment in the centre of one of Britain's favourite student cities.

Our cosmopolitan city-centre campus is the hub of our teaching, research and collaboration and we continue to invest millions in developing services and facilities to support you in your studies. With over 5,000 postgraduate students, you will feel at home from day one.

Newcastle University

London

Newcastle University London enables you to undertake a Russell Group education in the heart of one of the world's global cities. Our industry-immersive approach to teaching and learning is focused on providing you with the practical skills needed to succeed in the international world of work.

A business-focused degree portfolio includes opportunities for work experience, internships and placements with national and international brands based in the capital. Combine this with a programme of weekly masterclass events, practical projects and regular guest lectures from representatives of professionally accredited bodies, and you have everything you need to take your career to the next level.

www.ncl.ac.uk/london

Newcastle University

Medicine Malaysia (NUMed)

We have a wholly owned campus in Malaysia, offering a range of undergraduate medical and biomedical degrees taught in our high-spec, purpose-built facilities in EduCity, Johor. Students studying our degrees in Malaysia can expect the same high-quality education, teaching and learning facilities that we provide in the UK.

www.ncl.ac.uk/numed

Newcastle University

International Singapore (NUIS)

We deliver top-quality degrees in Singapore through our long-established partnership with the Singapore Institute of Technology (SIT). Subject areas include electrical engineering, energy and sustainability, marine technology, process safety and risk management. Singapore is also home to the Newcastle Research and Innovation Institute (NewRIIS), our cutting-edge research facility which opened in 2017.

www.ncl.ac.uk/singapore



Partnerships

Our geographical reach extends beyond our physical locations through our educational partnerships with over 300 prestigious international institutions. These include locations in the Americas, Asia and across Europe, enabling us to offer a range of joint courses and international research opportunities.

Alumni network

Our worldwide alumni network also helps to keep you connected wherever you go and whatever you do after graduation. With over 190,000 graduates in more than 170 countries and independent states you can be sure that you will never be too far from a fellow Newcastle graduate.





**Top
10**
in Europe for teaching
excellence

(Times Higher Education Europe
Teaching Rankings, 2018)



Teaching excellence

Newcastle University has a long history of excellence in learning and teaching:

- we have been awarded 5 QS Stars for teaching
- we achieved a 95% rate for expert lecturers and a 90% satisfaction rate for quality lectures (International Student Barometer survey, Autumn 2017)
- we are ranked 11th in the UK for academic experience (Times Higher Education Student Experience Survey, 2018)
- academic support is ranked highly, with 90% of students agreeing that they were able to contact staff when they needed to (National Student Survey, 2017)

Our reputation for teaching excellence was further endorsed in 2017 when we were awarded TEF Gold, one of only eight research-intensive Russell Group universities to achieve this highest UK government rating for the quality of our undergraduate teaching. The award recognises that we deliver consistently outstanding teaching and learning outcomes for our students.

Ranked in the top 150 universities in the world (QS World Rankings, 2019) Newcastle University has a global reputation for world-leading

academics working at the forefront of research and scholarship, our excellence and innovation in teaching and our world-class facilities.

We strongly believe that a student's learning experience is enriched by embedding research-led teaching into our study programmes. This ensures that as well as being research-led, you will be research-informed and benefit from the latest cutting-edge developments and discoveries.

We are committed to delivering high-quality and innovative postgraduate courses. The Newcastle experience is one where you will be challenged but always feel supported. We are sure you will enjoy being part of our world-class learning environment, taught by leading academics whose innovation in their subject areas translates to inspirational teaching.



Our Newcastle campus

The University campus is compact, beautiful and in the city centre, so you really are at the heart of everything that's going on.

Traditional red-brick buildings sit comfortably alongside contemporary new builds, while close by, you can explore picturesque open grassland and wooded areas providing plenty of green spaces for relaxation.

The University holds the DEFRA Green Flag award for our campus (one of only 11 universities in the UK that holds the award). The Green Flag awards are judged against criteria including sustainability, cleanliness and conservation.

Thanks to multimillion-pound investments, our campus is always being developed to give you a great experience and to support your studies. Most of our accommodation sites are also situated on, or within a short walking distance of our city-centre campus.

Internationally diverse

As a founding member of the Russell Group – 24 leading research-intensive UK universities – and a top UK university, we welcome students and staff from around the world, who help to create a real sense of community on our cosmopolitan campus.

Fantastic facilities

The majority of our teaching, support and student services is located on campus, including our award-winning Library and Careers Services, so everything you need is available in one place. See pages 24–25 to find out more about our fantastic facilities.

Student life

At the heart of campus is Newcastle University Students' Union (NUSU). Run by students for students, the Union provides endless opportunities to meet new people and experience new activities. With over 200 societies to join, computer clusters, study spaces and places to eat, there is something for everyone.

www.nusu.co.uk

Visit us

To really explore the campus, pay us a visit or, if you're currently living at a distance, see our campus and buildings online.

- Take a virtual tour www.ncl.ac.uk/tour
- Search 'Newcastle University' in **Google Maps** and see inside our buildings
- Look out for one of our live campus tours that are regularly streamed on social media www.facebook.com/newcastleuniversity/videos
- Book a student-led postgraduate campus tour www.ncl.ac.uk/postgraduate/meet-us
- Come to our next on-campus Postgraduate Open Day on Wednesday 6 February 2019 to find out what it's really like to study here.

"Having the campus right in the city centre makes it so much more accessible and means going into town with friends is no effort at all. I love that Newcastle is a compact city where everything is either very easily commutable, or just a short walk away."

Saman,
(Intercalating MMedEd)



Accommodation

There are many reasons for choosing to live in our student accommodation and the great news is that all postgraduate students are guaranteed University or University Managed Partnership accommodation for your first year*.

Student friendly and safe

Staff are on call 24 hours a day and most residences provide on-site support during office hours. Entry phone systems and CCTV are installed in most of our accommodation.

Budget friendly

Weekly rent for a single room in University postgraduate accommodation ranges from £96.18 to £150.78 per week (2018–19). If you'd prefer your own studio apartment, prices start at £166.25 (2018–19). Our rents are lower than the UK average, plus Newcastle is an affordable city to live in, so your money goes further.

Close to campus

The majority of our accommodation is in the city centre and within short walking distance of our campus. Other accommodation sites are well connected to the city and campus via reliable, fast and frequent public

transport. From traditional buildings to modern developments and a range of *en suite* options, we have something for everyone including accommodation for families, couples, single-gender and adapted.

A sense of community

Living in University accommodation provides a fantastic opportunity to meet fellow students from all over the world. You can even meet them before you arrive via our dedicated social media pages.

www.facebook.com/accommodation.NCL

Continuous contracts

Most University accommodation contracts cover the whole academic year, so you don't need to vacate your room during the major holidays. We also have flexible payment arrangements to help you spread the cost.

Finding private accommodation

We can also assist new students who do not require University accommodation. We provide information on all aspects of private-rented accommodation during your time at University and advise on finding suitable private-sector accommodation to meet your needs.

www.ncl.ac.uk/accommodation/private

Our guarantee to you*

During your first year of study you are guaranteed a place in University-owned or Managed Partnership accommodation if you:

- are a postgraduate student coming alone to the University
- have firmly accepted our offer of a place to study at Newcastle University and have met all of the conditions of the offer by 30 July
- have paid the £500 application fee, which is refundable against your summer term's rent

Deadline: as soon as you have received an offer from the University you can apply for your accommodation online. To be eligible for the guarantee you must submit the online Accommodation Application by 30 June.

www.ncl.ac.uk/accommodation/new-students/guarantee/#postgraduate



Our city

Welcome to Newcastle, a welcoming and diverse city rated number one place in the world to visit in 2018*.

With one in six people in Newcastle a student, you will feel at home straight away. The locals are friendly and approachable and go out of their way to help you. Student rents and cost of living are also among the lowest in the UK, providing you with more money to spend on the city's many attractions.

Art and culture

The city boasts numerous theatres including the Theatre Royal, which hosts some of the country's biggest national productions by the Royal Shakespeare Company, the National Theatre and Opera North. The University campus also houses the North East's largest producing theatre company, Northern Stage.

The city's art galleries and museums range from ancient history to modern art, including the Discovery Museum, Great North Museum: Hancock, Life Sciences Centre, the Laing Art Gallery, the refurbished Hatton (on campus), and impressive BALTIC Centre for Contemporary Art – a converted flour mill on the banks of the River Tyne.

Food and drink

Newcastle is a truly cosmopolitan city and its international vibe is reflected in the range of restaurants and bars. You won't need to worry about missing food from home as there is every chance that you will find it here.

Sport

Sport is integral to Newcastle's identity. You can see a range of great sport in the city including Premier League football at Newcastle United Football Club, the UK's most successful basketball team and top-flight rugby union. Longsands Beach in nearby Tynemouth is popular with UK pro surfers, and athletics fans will find a friendly welcome at Gateshead International Stadium.

Film

Grab your popcorn because Newcastle loves the movies. More than 20 screens in the city centre show everything from Hollywood blockbusters to global art-house classics.

Music

Newcastle offers a multitude of music venues, such as the Metro Radio Arena and O₂ Academy, hosting some of the most famous



names in rock and pop. Folk, classical and jazz concerts regularly take place at Sage Gateshead whilst smaller venues across the city, including the Cluny and Cumberland Arms, cater for a variety of musical tastes.

Shopping

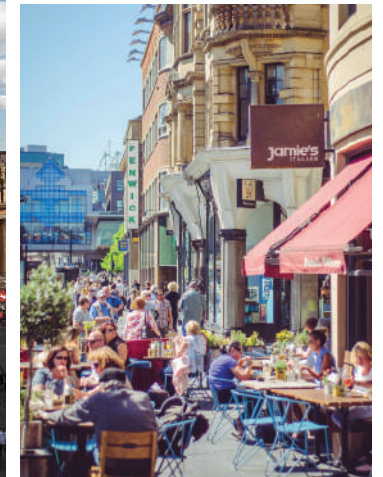
Newcastle is a premier shopping destination with high-street names and boutique brands at intu Eldon Square, one of the UK's largest city-centre malls. Combine this with a bustling indoor market, independent shops and a range of global food stores, all just a few minutes' walk from the University campus and it's no wonder that Newcastle has a reputation as one of the best shopping destinations in the North of England.

Socialising

Ranked 4th in the UK for social life**, Newcastle is a vibrant city that is loved by locals and visitors alike. Alongside a great choice of restaurants and bars, you'll also find comedy clubs, pop-up theatre, film screening and late night cafés. The list is endless; we really do have something for everyone.

*Rough Guides, 2018

**Times Higher Education Student Experience Survey, 2018



A beautiful city

Newcastle is the cosmopolitan capital of North East England. Fun, friendly, culturally diverse and safe, it has gained an enviable reputation as one of the UK's favourite student cities.



World top 100 student city

QS Best Student Cities, 2017



About us



We have lots of green spaces with two large parks located right in the city centre and next to campus.



It's not only the city that makes Newcastle so special, unspoilt beaches and wonderful countryside are just a short journey by Metro or bus.



Excellent transport links make it easy to travel across the city, the region, and beyond. London is less than 3 hours away by rail, with trains leaving every 30 minutes.



You only have to look at the Quayside, with its iconic seven bridges, art galleries, international music venues and thriving restaurants and bars, to see why so many students affectionately refer to Newcastle as their second home.



Supporting you

Funding

As a top 150 world university*, our global reputation, impressive graduate employability record, award-winning careers support and low cost of living mean a degree from Newcastle University is a sound financial investment.

There are many different funding sources available for international postgraduate students and it can often be difficult to know where to start your search. Here at Newcastle, we understand the importance of getting up-to-date information on the latest opportunities, and our aim is to make the search for funding as easy as possible.

Our funding website is easy to use and built around you. Simply enter some basic details about where you're from and what subject you are hoping to study and the search will return all of the relevant funding sources. We also link funding opportunities to our courses online, so you can quickly review what's on offer in a particular subject.

The funding picture is complex and changes regularly so it's worth noting that:

- the website is updated weekly, so the number and type of international funding opportunities may vary at any one time
- you'll need to bookmark the page and visit the site regularly to keep up-to-date

- if you are unable to secure a full scholarship, you may be able to build up a 'portfolio of funding'. For example, the University offers partial scholarships and alumni, family and early payment tuition fee discount schemes
- our award-winning Careers Service also advertises work opportunities on campus and in the city, so you can earn money while you are here

International scholarships and loan schemes

The University offers a wide range of international scholarships of varying amounts to international applicants applying from countries across the world. Details of individual scholarship schemes can be found on our postgraduate funding pages online.

We participate in a number of prestigious scholarship schemes, such as the Chevening, the Commonwealth and the Fulbright schemes and jointly with these organisations offer full scholarships.



The University also participates in a number of international loan schemes enabling eligible applicants to receive financial support.

Find out more at www.ncl.ac.uk/postgraduate/funding

Don't forget...

As well as University funding, there are also opportunities for financial support through government and employer sponsorship, via public bodies such as Chevening and the British Council and smaller charities and trusts. So, our advice is to be proactive when it comes to searching.

If you require a Tier 4 visa

If you require a Tier 4 visa to study in the UK, you need to provide proof that you can support yourself and pay for your course (this will vary depending on your circumstances). For more information, see www.ncl.ac.uk/international/visa/

*QS World University Rankings, 2019

Top tips

As you might have found, securing funding can be highly competitive, so we have included some of our top tips when it comes to searching...



Begin your search early...

It's worth starting your search up to 12 months before your intended year of entry. The majority of funding becomes available between September and March, so be extra attentive during this period.



Give yourself enough time...

Applying for funding can be time consuming, so don't leave your application until the last minute. Many funding opportunities, particularly for taught courses, will require you to have a formal offer of a place on an eligible course before you can apply.



Use a variety of funding sources...

Most people fund their studies through a combination of different funding sources, often referred to as a 'portfolio of funding.' Partially funded scholarships, personal savings and tuition fee discounts can all quickly add up.



Check the details carefully...

Information on eligibility, how to apply and closing dates will be specified on our funding website, so take the time to review all of the details.



Don't forget your living costs...

As well as your tuition fees, remember to add your living costs into your budget. This will vary considerably depending on lifestyle, but Newcastle is one of the most cost-effective cities in which to live in the UK. The UK government states international students should allow living costs of £1,015 per month for visa purposes.



Ask advice...

Don't be shy when it comes to money matters. Ask your academic tutor, your university finance team, current students who have secured funding, or university staff at a recruitment or virtual event.



Search for funding online:

www.ncl.ac.uk/postgraduate/funding

Facilities and resources

Ranked 12th in the UK for university facilities*, at Newcastle you will have everything you need to succeed – including an award-winning Library Service, online learning, first-class sports facilities and outstanding study resources.

To ensure we remain a world-class provider of learning and research, we have recently invested over £100 million in: the Newcastle Helix global centre for urban innovation; our sports facilities; Park View Student Village; and a number of core buildings. We also continue to invest millions in our student services to ensure you gain the best experience, all underpinned by a strong postgraduate support network.

Libraries

We have one of the best library services in the country and have won multiple awards for our excellent customer service. Our main library, the Philip Robinson Library, is open 24/7 during term time and our Marjorie Robinson Library Rooms offers a digital learning experience. We also have two specialist libraries, the Walton Medical Library and the Law Library. Our Library Service provision includes:

- 1 million print books, 2 million e-books and over 46,000 e-journals
- 24/7 online library help

- over 790 PCs and 110 loanable laptops
 - specialist subject librarians to support students
- www.ncl.ac.uk/library

IT facilities

Whether you want to work on an essay in a computer cluster, connect to WiFi, review a lecture online, or simply need some technical support, our IT Service is here to help. It provides:

- over 3,000 computers and hundreds of accessible printers
- lecture recording and streaming – both great for revision
- online learning resources – providing access to reading lists, course handouts, timetables, collaboration with fellow students and feedback from tutors
- a University app to help you find your nearest PC, manage your Library account and get the latest University news

www.ncl.ac.uk/itservice

Sport

Newcastle is a top 10 UK university for sport for the third year in a row**. With 65+ sports clubs, everyone at Newcastle University has the opportunity to enjoy sport here. Many clubs are also supported by professional coaches.

www.nusu.co.uk/getinvolved/sports

We encourage all students, whatever their ability, to get involved in sport. Check online for details of our full provision.

www.ncl.ac.uk/nclsport/campus

If you're a talented sportsperson and want to achieve your full sporting potential, we have sports scholarships on offer to support you.

www.ncl.ac.uk/nclsport/performance/scholarships

The University Sports Centre has a wide range of facilities for sport and physical activity. Our health and fitness suite includes an eight-court sports hall, four new squash courts and a spin studio.

www.ncl.ac.uk/nclsport/campus/indoor

*Times Higher Education Student Experience Survey, 2017

**British Universities and Colleges Sport (BUCS) rankings, 2017–18



Study resources

Your learning doesn't end in the lecture theatre; we offer additional study support, whether it's learning a new language just for fun, or getting help writing your dissertation proposal:

- Maths Aid – help with mastering mathematical methods, revising for exams with a quantitative element, understanding statistical tests and practising graduate numerical skills tests
 - Writing Development Centre, in the Philip Robinson Library – helping you to develop your academic writing skills
- www.ncl.ac.uk/students/wdc

On-campus language support

We provide free language skills courses, including:

- free in-session English language courses
- Tandem learning, partnering with an English-speaking student
- Access to online English language study materials
- Free access to our award-winning Language Resource Centre, providing self-study learning materials, satellite channels in 17 languages, 800 foreign language films, dedicated computer clusters and a language learning podcasting site

www.ncl.ac.uk/langcen

Subject facilities

You'll have access to specialist facilities related to your course including:

- £58m Urban Sciences Building
- new £34m Learning and Teaching Centre
- a museum and art gallery
- sea-going research vessel, coastal station and marine lab
- commercial farms and a biological field station
- music studios and rehearsal spaces
- anatomy labs and clinical skills suite
- language clinics and analysis labs
- studios for architecture and art
- media studios, recording and editing equipment

Extra support

Ranked top 10 in the UK for overall student experience for the fourth year in a row*, Newcastle University provides more than just world-class taught courses and research opportunities. Alongside your academic career, we want to ensure you get any additional help you might need.

We pride ourselves on being a caring university where you will be supported throughout your degree by a personal tutor and our specialist teams. At the heart of campus, you will find King's Gate, our dedicated student services building, home to our professional services staff who can provide expert and confidential advice on a range of issues.

www.ncl.ac.uk/student-services

Accommodation

Our dedicated Accommodation Service offers advice on all of our student accommodation sites as well as private accommodation. See pages 14–15 for more information.

*Times Higher Education Student Experience Survey, 2015–2018

Money matters

Our Student Financial Support Team provides help and guidance on a range of money matters, including budgeting and funding eligibility.

World faiths

Chaplains of diverse faiths are based in the University Chaplaincy and are able to support students of any faith or none. We have prayer space on campus and student societies representing many religions.

Your wellbeing

Our Student Health and Wellbeing team can work with you, even before you arrive, to create a tailored package of support if you have additional needs relating to a disability, health-related illness, mental health condition or specific learning difficulties. The team also provides support to mature students and those with childcare responsibilities.

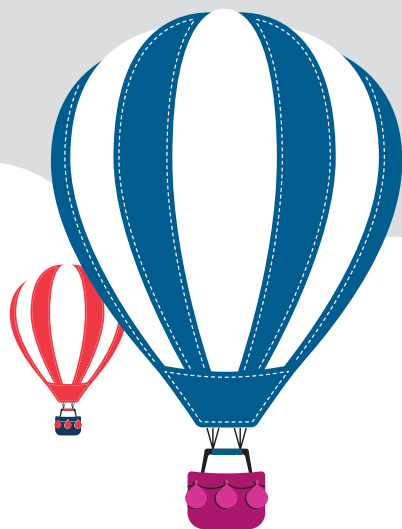
Emotional support

Professional therapists offer support including online self-help, psycho-educational groups or one-to-one counselling. Students whose needs cannot be met by the Counselling Team are referred to appropriate external services.



King's Gate building (left)

Award-winning careers support



With a 94% satisfaction rate for our Careers Service*, Newcastle University offers one of the best, largest and most innovative careers services in the UK.

We are accredited against the matrix Standard, a quality framework for organisations to assess and measure their information, advice and/or guidance services. This means, no matter what your career, learning, work or life goals are, our award-winning team of professional careers advisers can help when it comes to taking the next step in your career.

We provide guidance on everything from skills development and job searches, to interview preparation and practical help with hints and tips on setting up a LinkedIn profile.

*International Student Barometer survey, Autumn 2017

Our individualised programme of support includes a comprehensive workshop programme and a database connecting you with graduates working in a wide range of careers. Our Careers Compass Tool provides a personalised report with ideas, suggestions and resources to help you on your career journey.

Getting you career ready

There are over 1,500 employers posting over 100 new vacancies on our website each week, totalling over 5,000 advertised vacancies each year. So you will find plenty of work experience and placement opportunities to enhance your professional skills and build your CV, including:

- **internships** – gain graduate-level work experience with an internship. We advertise a large number of internships, including within local businesses and the University.

- **Jobs On Campus (JobsOC)** – matching students with paid temporary or casual work assignments at the University
- **volunteering** – over 200 volunteering opportunities advertised each year, providing a great way to gain valuable work experience



Business start-ups

If you've got the idea, then we've got the resources to help you. Each year our START UP team supports our innovative and entrepreneurial students to develop and launch their own businesses, providing:

- **entrepreneurial support** – a programme of workshops and access to a dedicated team of business advisers, entrepreneurs and professionals, each providing support on starting your own business
- **founderships** – support for graduate entrepreneurs looking to develop their new product, idea or service, by providing a business start-up package offering free workspace, funding, advice and support

www.ncl.ac.uk/careers/startup

Connecting you to employers

We facilitate opportunities for you to meet future employers face-to-face, learn more about a particular profession and find out what you need to succeed in a particular job.

Each year more than 300 international, national and local employers visit our campus to deliver presentations, hold interviews and attend recruitment fairs to attract our talented students.

These activities provide a fantastic opportunity for you to meet recruiters face-to-face, learn more about a particular profession and find out what you need to succeed in the jobs market.

www.ncl.ac.uk/careers



Graduate success

We are consistently rated among the UK's best for the education and the support we provide. Our students have become some of the most sought after for employment or further study across a wide range of disciplines – the results speak for themselves.



Sophie, studied MSc Foundations in Clinical and Forensic Psychology

Current role: Counselling Psychologist (in Training)

“After finishing my BSc in Psychology, I completed three internships, including one at a psychiatric clinic. I chose Newcastle as it allowed me to study clinical as well as forensic psychology in one Master's course. The lectures were inspiring, covering a variety of topics and there was still plenty of time to enjoy the city. My final thesis provided the opportunity to work alongside some of the finest researchers, giving me further insight into another area of psychology. The course provided a stepping stone for me to study a Doctorate programme.”

94%
satisfaction
rate for careers
service

(International Student Barometer survey, Autumn 2017)

Winner
‘Best university
employment
strategy’

TARGETjobs Awards 2017



Douglas, studied MSc Innovation, Creativity and Entrepreneurship

Current role: Research Manager at Tech North

“I had earlier visited Newcastle, liked what I saw and wanted to come back. After working for the US State Department, I decided to return and study for my Masters at Newcastle University. The course encourages you to network and collaborate with peers from the start, it also provides an opportunity to develop your own ideas and challenge others.”



Abhijeet, studied Master of Business Administration

Current role: Senior Manager, Human Resources at Fountain Entertainment, Pvt, Ltd

“I chose to study my MBA at Newcastle University as I liked the course structure and also the city life. I found that the class size was smaller on my course, providing more personal support from the tutors. Newcastle is an amazing place, with great nightlife and places to eat. It is also far more affordable than London. After returning to India, I soon found employment in the HR Department at Fountain Entertainment.”

**5 QS Stars
for Student
Employability**



**Top 20 ‘most targeted’
university by the
UK’s leading
employers for the
last six years.**

(The Graduate Market report from High Fliers Research 2012–2018 – a report into the universities most targeted for graduate employees by *The Times* Top 100 Graduate Employers).



Zaleha, studied MD Doctor of Medicine

Current role: Dean of Medical Facility and Hospital Director, Professor and Senior Consultant Obstetrician and Gynaecologist, University Kebangsaan, Malaysia

“I chose to study at Newcastle University because of the excellent research environment, the friendly community and the location of the campus, so close to green spaces nearby. My course supervisors were extremely helpful, sharing their extensive knowledge and skills and providing encouragement throughout. Graduating from such a high-ranking institution gave me so much more than advancement in my career, it helped me set similar standards for providing excellence in research and clinical practice.”



Tian, studied MA Interpreting and Translation

Current role: Business owner and Conference Interpreter at Intian Solutions

“Studying at Newcastle University prepared me for the world of work, helping develop my skills in language, interpreting and computing. I moved to the USA after graduating, started an interpreting business in Washington DC and now regularly provide services to both public and private institutions. My degree helped me differentiate myself in the market, especially in my first year in business.”

**World
top 150
university**

QS World University Rankings, 2019



Your journey to Newcastle



We welcome students from over 120 different countries and our diverse campus is home to a truly global population, with over 5,000 international students choosing to study with us.

We are here to support you at every stage of your journey, whether that's providing advice on choosing the right course, helping with visas and immigration, or organising social events on campus to help you settle in and make the most of your time here.



Connect with us...



StudentsNCL



newcastleuniversity



weibo.com/UKNCL



Search NCL-UK on WeChat



1. Help and advice



Come and meet us...

We recognise that coming to study in the UK is a big decision and one that you probably have a lot of questions about. Our International Recruitment Team regularly travels to destinations all over the world to meet new students, work with our network of agent advisers and connect with our alumni.

To find out when we're visiting a city near you, review our travel schedule at www.ncl.ac.uk/international/meet-us

To see life on campus take a virtual tour: www.ncl.ac.uk/tour

Join us at one of our online student-led events to find out what it's really like to study and live here: www.ncl.ac.uk/postgraduate/meet-us/#virtualevents

Your application

We have a dedicated and friendly Postgraduate Admissions Team who will manage your application. To find out how to apply, including where to go for more detailed information on country-specific qualifications and English language requirements, go to pages 50–52.

We also work with agents across the world, a number of whom may be in your country. Our agents can support you through the application process.

To find your nearest agent, check our country pages at www.ncl.ac.uk/international/country

Your offer

Review our step-by-step guide to find out what happens after you have submitted your application at www.ncl.ac.uk/postgraduate/your-offer-guide

Visa advice

International students from outside the UK or EU will normally have to apply for a study visa under the Tier 4 points-based immigration system. For further information about the Tier 4 process visit www.ncl.ac.uk/international/visa

Immigration support

We have a dedicated Visa Support Team on campus who can provide advice and guidance on a range of issues including:

- applying for a visa to come to the UK to study
- extending your student visa
- visa guidelines for working in the UK after graduation
- inviting family and friends to visit

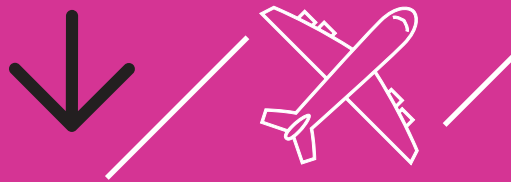
www.ncl.ac.uk/students/progress/visa

Tuition fees and scholarships

Information on tuition fees for each of our courses can be found at www.ncl.ac.uk/postgraduate/courses

Each year we offer a range of international scholarships to students from across the world. Information on funding can be found on pages 22–23.

2. Before you leave...



Preparing for your trip

Before your course starts we provide a range of information to help you prepare for your trip to the UK. This includes:

- a pre-travel check list, full of useful hints and tips
- advice on understanding your immigration responsibilities
- information on how to get to your accommodation
- the dates and locations of arrival events and information sessions including registration
- details of our International Welcome Programme, which normally starts one week before term begins

Our pre-arrival website is updated regularly over the summer months and includes all of the latest news and advice. We also run pre-departure briefings online and in some of our most visited countries.

www.ncl.ac.uk/pre-arrival/international

3. You've arrived...



Arriving in Newcastle

When you get to Newcastle, we want you to feel at home as quickly as possible so provide a comprehensive International Welcome Programme including:

- airport meet and greet, for those arriving during selected dates in September, with a free shuttle bus to take you directly to your University accommodation or to the city centre
- an early arrivers events programme if you arrive before term officially starts
- International Welcome Week, a week-long schedule of events designed to help you meet other new students, key members of staff and our dedicated student support teams
- Newcastle University Students' Union (NUSU) also runs a programme of social activities specifically for postgraduate students so that you can get to know the region, city and each other

www.nusu.co.uk/pgwelcome

4. Student networks



Making connections

Opportunities to meet new people, socialise, try new activities, make the most of the city and explore the UK are also available throughout the year at Newcastle University Students' Union (NUSU).

With over 65 sports clubs and 200 student societies, including a dedicated International Society and an International Officer (to represent the views of international students), the Students' Union is the place to be whether you want to try a new activity, work on an assignment, or simply grab a sandwich and relax.

www.nusu.co.uk

If you're coming to Newcastle with your family and children, you'll be in good company as there are lots of student parents studying with us. To find out what support is available, see our student parent pages at www.ncl.ac.uk/students/wellbeing/about/studentparents

* Don't forget...



We offer...

- * A dedicated and friendly Postgraduate Admissions Team to help you with your application
- * Immigration and visa advice
- * Online pre-arrival information to help you plan your trip
- * International Welcome events
- * Activities for early arrivers
- * A programme of social activities run for postgraduate students at the start of term

English Language

We offer a range of English language and academic preparation courses before you start your studies, as well as ongoing support while you are studying with us.

Entrance requirements

If you're not a native speaker of English, or if you are a Tier 4 visa application student, you will need to show that you have adequate knowledge of written and spoken English before you begin your studies.

For direct entry to a Newcastle University course, you will typically need an overall IELTS score of 6.5 (or equivalent), but some courses may ask for a higher level of English language. You can check the language requirements for each course online at www.ncl.ac.uk/postgraduate/courses

Tier 4 (General) visa application students also need to demonstrate proficiency at level B2 of the Common European Framework of Reference for Languages. This is equivalent to at least IELTS 5.5 in each of the four components:

- reading
- writing
- speaking
- listening

See www.gov.uk/tier-4-general-visa for the most up-to-date information.

Alongside the IELTS test, the University also accepts a range of English language qualifications including Cambridge, Pearson's and those from the International Baccalaureate organisation. Check for equivalencies at www.ncl.ac.uk/international/courses/language

Tests are normally considered valid for two years from the date the test was taken to the start date of your course.

On-campus language support

If you are not a native English speaker we ask you to take a short English language assessment when you first arrive. This helps us to identify what extra English language support you may need when you are here.

Once you have started your course, there are also a number of free services to help you continue to build your language skills while you study. These include:

- free in-session English language courses
- tandem learning, partnering you with an English-speaking student who wants to learn your language
- access to online English language study materials, helping you with academic writing, grammar and vocabulary
- courses to help improve your writing for university study
- free access to our award-winning Language Resource Centre www.ncl.ac.uk/langcen

University preparation courses

We enjoy a close and distinctive relationship with INTO, a global organisation that helps prepare international students for university study. The courses are integrated into our academic structure, so by studying with INTO Newcastle, you are already part of the Newcastle University family. Courses are run at both of our Newcastle and London campuses and can help you to:

- study English in the UK, prior to making your application to university
- study an academic course to prepare you for direct entry to a postgraduate degree at Newcastle or London
- improve your general English language skills

INTO Newcastle University

INTO Newcastle University is based in a purpose-built study centre in the heart of the University campus and just minutes from the city centre. The centre includes teaching and learning facilities for up to 1,000 international students, as well as dedicated accommodation. www.ncl.ac.uk/ipc/about

INTO Newcastle University London

Students undertaking their English courses in London will benefit from outstanding learning facilities in a purpose-built building near Liverpool Street Station. Newcastle University London brings together students, alumni and businesses from around the world and provides a central base

from which to take advantage of all of the social and learning attractions the capital city has to offer.

www.ncl.ac.uk/london/courses/university-preparation

Whether you choose to study at Newcastle or London, you'll share the same learning and support facilities as the rest of the students on campus. INTO Newcastle is also subject to the same quality assurances as the University itself.

An overview of the courses provided by INTO Newcastle is outlined below. For detailed information on entrance requirements and how to apply, see the websites listed above and left.

INTO

Type of programme	Content and location	Start date/enrolment
Graduate Diploma	Preparing you for direct entry to a number of postgraduate programmes across the University. Combines English language learning and academic study	September and January
Academic English	For students who want to improve their level of academic English, or to meet the language requirements for a degree programme at both our Newcastle and London campuses	Start dates throughout the year – September, January, April or July
Pre-sessional English only	For students already holding an offer to study at Newcastle or London who need to improve their language skills before starting a degree	Courses are 6 or 10 weeks in length and are held in the summer months (start dates in June and July)

Study here



Studying in the UK

Your range of skills and subject knowledge, gained either through your undergraduate degree or career, will prove invaluable to you as you begin your postgraduate course at Newcastle University.

Teaching and learning styles can differ between countries so to help you feel prepared we have provided a quick overview of what you can expect when you start your studies with us.

Learning styles

Teaching isn't just about lectures. Seminars, tutorials and practical sessions are also likely to form part of your working week. This mix of learning styles enables you to explore your subject in more depth, whether that's a lively discussion as part of a small group seminar, one-to-one tutorial discussion with an academic expert, or hands-on experience as part of a practical demonstration.

Independent working

Although you will continue to have timetabled classes, the number of contact hours may be less than you have previously been used to. This means that you will need to be more self-directed in your learning and plan your time. For example, spending time in the library reading and researching, meeting with fellow course mates to discuss shared work and preparing for seminars and tutorials in advance.

Critical thinking and analysis

As well as developing an expert knowledge of your chosen subject, we want our graduates to be independent thinkers, entrepreneurial in their attitudes and able to embrace change. To achieve this, we encourage you to think critically and challenge ideas, including your own preconceptions!

Group working

You won't be learning on your own. Group work is often a key element of any postgraduate course. This can involve tackling a challenging project with fellow students, testing your theories and delivering your findings. Learn to problem solve and develop practical presentation and report writing skills – all invaluable in the workplace.

Original research

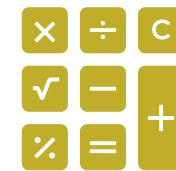
Conduct an original piece of academic research and build advanced knowledge in an area that you feel passionate about and will be crucial to your future career development.

Although studying at a taught postgraduate level can be quite different from your undergraduate degree, we aim to make the transition as easy as possible and provide a variety of support to ensure you succeed.



Academic support

You will be supported in your studies by a core academic team including your course director, subject lecturers, administrative staff and personal tutor. There is also a network of support from fellow classmates and opportunities to get involved in regular subject and social events, creating a close-knit postgraduate community



Maths Aid

Help with exam preparation, problem solving and numerical skills development



Writing Development Centre

Based in the Philip Robinson Library, our tutors can help you develop your academic writing skills via one-to-one tutorials, workshops and a range of online resources designed to support your independent learning www.ncl.ac.uk/students/wdc



Language learning

Our award-winning Language Resource Centre is equipped with the latest technology and self-study materials in over 150 languages www.ncl.ac.uk/langcen



Skills development

Alongside developing your specialist subject knowledge, a taught Master's course will also help you to develop transferable skills in areas such as: teamworking, problem solving, report writing, data analysis, communication, presentations and public speaking, project and time management – all of which employers tell us are vital to success in the graduate job market



Careers support

Opportunities to enhance your professional skills, build your CV whilst studying and connect with employers and entrepreneurs are all available via our award-winning Careers Service. Check out what we offer on pages 32–35



Rated 5+ QS Stars for excellence

Newcastle is one of only four universities in the UK to achieve 5 plus QS Stars for excellence. We are proud to have been awarded 5 stars in the following areas: teaching, student employability, research, internationalisation, innovation, inclusiveness, and life sciences and medicine www.ncl.ac.uk/about/quality/qs-stars

Taught Masters' courses: the academic year

Normally studied on a full-time basis over 12 months, a taught Master's course will typically run from September to September. The pace and intensity can seem quite different to an undergraduate degree.

Teaching is normally delivered via a mixture of lectures, seminars, group work and, depending on your subject choice, lab-based sessions, technical skills development and practicals.

Each Master's-level course is divided into a series of modules, with each module having its own formal assessment method, which can be an exam, essay, presentation group work, or a combination of all three elements.

You will also undertake a final dissertation/project at the end of the course.

Arrival and induction

Your first term typically starts in September, although a small number of our taught courses start in January.

Having arrived at your accommodation and registered as a student, you will spend the first week familiarising yourself with the campus, study environment and meeting your academic colleagues and fellow students before term time begins.

Your University induction will include a comprehensive overview of our facilities, including the libraries, wellbeing services and IT support. You will also have the opportunity to attend your academic school and subject inductions, to get a feel for your new learning environment. See our arrival website to find out more.

www.ncl.ac.uk/pre-arrival/arriving

Autumn term

Timetabled classes run through the Autumn term and you will normally study compulsory modules that focus on building core skills and knowledge in your chosen subject.

The first term can seem quite busy as you settle into your new routines, but don't worry, we provide lots of help and support to ensure your transition is as easy as possible. Why not look at the facilities we provide on pages 24–25 and the extra support we offer on pages 26–27.

At the end of the Autumn term, you will break for the Christmas vacation, but will typically work across the holiday period preparing for exams and written assessments in January.

Spring term

Alongside compulsory modules, many courses offer a range of optional modules, often undertaken in the Spring term and enabling you to tailor your study to a particular field of interest.

Summer term

Many of the more formal timetabled elements of your course reduce now as you concentrate on planning and writing your research/project dissertation. The dissertation is normally between 15,000–18,000 words and provides the opportunity to put into practice all of the skills and knowledge you have acquired over the previous months.

We appreciate that the research project is a big undertaking so we provide ongoing support via our research study skills modules and expert academic supervision.

You will normally submit your final dissertation/research project around August/September.

Graduation

Graduation normally takes place in December and is a great chance for you to celebrate your successes with family and friends.

Once you have graduated you automatically become an alumnus of Newcastle University and join a worldwide network of over 200,000 graduates living in over 180 different countries and independent states around the world. This network helps you stay connected wherever you go and whatever you do after graduation.

We continue to support your career through a range of services and benefits including:

- access to the University's Careers Service for up to three years after you graduate
- 'START UP' business support to help you develop a new business
- a calendar of global events and networking opportunities

www.ncl.ac.uk/alumni/community

PG Life

Studying a Master's course is a unique experience and given that it's usually only 12 months, can go very quickly. But the rewards are limitless and the memories you make will last a lifetime.

Get an insight into what our students think about studying here by:

- reading the profiles on the right and online >>
- watch our videos to find out what students love about the campus and city www.ncl.ac.uk/lovenewcastle



Tariq, MA Human Resource Management (Saudi Arabia)

Being an international student studying at a postgraduate level was a big challenge for me as it's a totally different experience, but I found so much support from the University, especially the writing courses and the friendly staff.

In addition, fellow students were really helpful, which made things easier and opened my eyes to new things.

Studying here definitely provides added value because of the resources the University has to offer. This includes opportunities to volunteer and engage in different activities that help personal development.

I am a student representative, so I meet with staff to represent the student voice. This has helped me to develop problem-solving skills, engage with staff, and has been one of my best experiences.



Wenzhen, MA Cross-Cultural Communication and Media Studies (China)

The combination of modules from two schools is the most wonderful part of my course. It enables me to study communication studies and media research.

I would strongly recommend the course, especially to those interested in studying more than one subject area at postgraduate level. Although the workload is obviously much more than at undergraduate level, the timetable is more flexible.

The University not only offers a good environment and resources for studying, it also encourages students to get involved in the societies and out-of-class events. We can easily find different kinds of activities or job opportunities.

I think the people in this city are very friendly; I'm really happy to live here. After graduating from Newcastle University, I'd like to work in media communication or public relations.



Riddhi, MSc Drug Chemistry (India)

I was keen to pursue my postgraduate degree in Drug Chemistry, and this course was only offered by Newcastle University. The course structure and subjects were also in complete sync with my area of interest.

Postgraduate study is more challenging but an excellent opportunity to explore your potential and develop your research skills. It develops your analytical thinking and reasoning skills. The seminars that had guest lecturers were amazing – they gave me the opportunity to learn the trends and latest research going around. Also the tutorial sessions gave me the chance to meet my tutor on a one-to-one basis and remove any concerns I had.

Newcastle is a very beautiful and peaceful city. It has a lot of students around so it is very easy to make friends and have a good time whilst you are studying. I would definitely recommend my friends to apply to this university.



Jonathan, MSc Agricultural and Environmental Sciences (Guyana)

What I most enjoy about my course is the range of modules offered. You can tailor your curriculum according to your preferences. I've chosen an agro-ecological concentration with a mix of modules that focuses on both farming and ecology.

As a postgraduate student, a greater level of discipline and responsibility is required. With assessments mostly by assignment and based on real-life scenarios, greater critical analysis, problem-solving and decision-making skills are required. The heavy workload on the course also requires you to manage your time effectively.

Newcastle is truly an international student city, which has allowed me to meet people from all over the world. My immediate aspiration after graduating is to find a career in rural development and resource management in agriculture.



Kinsey, MSc International Marketing (USA)

The MSc International Marketing course provides a unique learning opportunity and is very relevant to today's international business environment. From both an academic perspective, as well as an extra-curricular and social perspective, I would absolutely recommend my course to prospective students.

Postgraduate studies shouldn't be easy. However, with a strong work ethic, much independent studying, and a motivating drive to excel, the hard work is equally rewarding. Lectures are large for this course, while seminars are very small and provide more direct opportunities for class participation and feedback from lecturers.

Newcastle University provides a postgraduate community unique among many other universities. The highlight of my postgraduate experience has been the opportunity to explore the city and surrounding areas with new friends. Being part of such an inclusive, international community has been so much fun.

After graduating, I aspire to be at the forefront of the ever-expanding industry of international marketing and design.

Your research journey



Establishing your doctoral-level research proposal, finding funding and identifying a potential supervisor require time and perseverance. This is because you are looking for a tailored programme of study centred on your interests, but which also requires expert supervision in that particular field. Potential supervisors will want to see that your project matches their specific requirements.

Your PhD research proposal

If you have a particular research project in mind, then you should follow the 'step-by-step' instructions highlighted on the page opposite.

If you don't yet have a clear idea of a specific research project, but know broadly which area you would like to work in, then you might find it more useful to apply for a project that is already established. This will normally have a named supervisor, a fixed project title and funding already in place.

Typically, this type of project is referred to as a 'studentship' opportunity. Studentships at Newcastle University are regularly advertised on our funding website (see right).

Finding funding

Finding funding for your research degree is often a time-consuming and competitive process. There is no single source of information, so it is important that you do your research and start your search for funding early. Although funding is made available throughout the year, the majority of funding is likely to be advertised between September and May.

Our website advertises many of the funding opportunities available at Newcastle University and is updated on a weekly basis. As a result, it is worth bookmarking the page and checking back on a regular basis to see the latest opportunities.

www.ncl.ac.uk/postgraduate/funding

PhD application: next steps

1

Begin by refining your PhD research idea/project title so that it's clear to potential academic supervisors what area/subject you are hoping to specialise in.

Or, search for a studentship project (see **Strand 1**)



2

Review our research groups and academic staff profiles online and consider whether their interests are a good intellectual fit with yours

3

Contact the identified academic/s or research group to discuss your project and find out if they are willing to supervise you

4

Check if you need to write a formal research proposal when submitting your application (see **Strand 4**)



5

Apply online. We accept applications throughout the year, with students typically beginning their studies in either September or January. Some PhDs also have start dates in April. To apply, visit www.ncl.ac.uk/postgraduate/apply

Strand 1: Studentship

If you don't yet have a clear idea of a specific research project, but know which area you would like to work in, then you may find it useful to search for a project that has already been established. These normally have a named supervisor, a fixed project title and funding already in place. This type of project is typically referred to as a 'studentship' opportunity and we advertise these on our funding website. See pages 22–23 for more information.

Strand 4: Research proposal

If you are applying to a degree in the Faculty of Humanities and Social Sciences, you may need to include a full research proposal with your application. Guidance can be found at: www.ncl.ac.uk/hss/learning/postgraduate

If you are applying to a degree in either the Faculty of Science, Agriculture and Engineering, or Medical Sciences, then you simply need to include the name of your identified supervisor with a brief description of your research interests/project title. Guidance can be found at:

Science, Agriculture and Engineering: www.ncl.ac.uk/sage/learningandteaching/postgraduateresearch

Medical Sciences: www.ncl.ac.uk/medicalsciences/study/postgraduate/research-programmes

Groundbreaking research

We are a world-leading university, advancing knowledge, providing creative solutions and solving global problems. Our inspirational and groundbreaking research is...



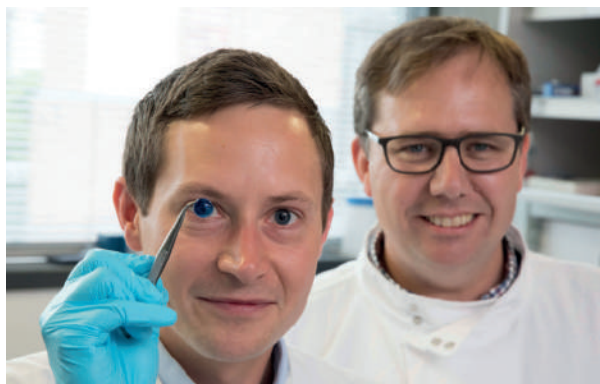
Reversing Type 2 diabetes
– our findings could benefit millions of people across the globe

Analysing changes in flooding, droughts and heatwaves of European cities
using climate models

Helping protect and preserve the world's precious coral reefs



Revealing a form of 3D vision in praying mantises
that could lead to simpler visual processing for robots



Developing the first 3D-printed corneas
using human tissue



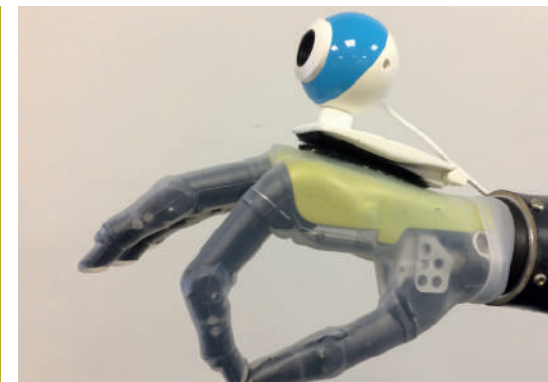
Leading the way in cyber security research

Safeguarding the past by protecting cultural property and preserving unique archives

Making drinking water safe with portable testing



Engineering future bionics – new prosthetic limbs to empower people's lives



Watch online:
www.ncl.ac.uk/research/impact/casestudies

For up-to-date news:
www.ncl.ac.uk/press

#impactNCL



How to apply

Follow steps 1–4 to apply for a **taught Master's course**. A step-by-step guide can also be found at: www.ncl.ac.uk/postgraduate/apply/guide

To apply for a PhD see page 47.



Choose your course

We have lots of information on our website to help you compare courses and make a decision that's right for you. This includes detailed module outlines, subject facilities, graduate employment data, fees and student profiles, so you can really start to get a feel for what it's like to study here.

www.ncl.ac.uk/postgraduate/courses

We also work with education agents across the world who can support you through the application process. To find your nearest agent, check our country pages at www.ncl.ac.uk/international/country

Check the entry requirements

As a guide, the minimum entry requirement for the majority of our taught Masters' courses is an upper-second-class Honours degree (2:1) or international equivalent. Some courses accept a 2:2 Honours degree or equivalent.

Guidance

- Academic and English language entry requirements are listed by individual course at www.ncl.ac.uk/postgraduate/courses
- Guidance on the international academic equivalencies for most countries can be found at www.ncl.ac.uk/international/country

We also welcome applications from professionals with significant work experience.



Check for application deadlines and deposit agreements

These can be found online in the 'How to Apply' tab for each course. www.ncl.ac.uk/postgraduate/apply

Apply online or via your education agent

- 1 Register via our secure applicant account and create a username and password
- 2 Complete the application form – you can save and update as many times as you like before submitting
- 3 Attach and upload your supporting documents. (see list, right >>)
- 4 Submit your application. You can track the progress of your application once it has been submitted

www.ncl.ac.uk/postgraduate/apply



Supporting documents

- Academic transcripts to confirm your degree or your progress and results to date
- A copy of the photograph page of your passport
- If you are not from a majority English language-speaking country you will need to include a copy of your English language test results eg IELTS
- Certified translations (if your documents are not in English)

Further guidance on how to complete your application can be found at www.ncl.ac.uk/postgraduate/apply/guide

Your offer

Once we have received and considered your application, a formal letter will be sent to you/your agent by e-mail informing you of our admissions decision.

1. Accept your offer...

Once you have received an offer you need to officially accept it to secure your place. You can do this online via your applicant portal login at www.ncl.ac.uk/postgraduate/apply



2. What next?

Unconditional offer OR Conditional offer

Deposit payment

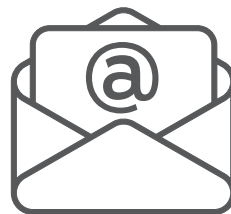
You may need to pay a deposit or provide proof of sponsorship to secure your place and to receive your 'Confirmation of Place' letter. If you need to pay a deposit, information on how to pay the deposit will be included in your official offer letter. You can pay online via your applicant portal login.

If you receive a conditional offer, you will need to work towards meeting the conditions of your offer, so that your application becomes unconditional. Documents relating to your offer can be scanned and uploaded online via your applicant portal login.

3. Confirm your offer

When you have met all of the conditions of your offer (and paid your deposit if required), you will receive a 'Confirmation of Place' email.

If you need to apply for a Tier 4 (general) visa you will also receive a 'Confirmation of Acceptance for Studies' (CAS) number, which you will need in order to apply for your visa. For more information see www.gov.uk/tier-4-general-visa/eligibility



4. Congratulations!

You have now completed all stages of the formal application. Further information about what to do once your place has been confirmed can be found in our online guide at www.ncl.ac.uk/postgraduate/your-offer-guide

This includes advice on applying for a visa and accommodation, how to register, and what to expect when you arrive in Newcastle. We will also send you regular e-mail updates, so look out for these.



Our taught courses

An overview of the subjects that we offer at taught postgraduate level is listed below.

A complete alphabetical list of all of our courses and tuition fees can be found in the accompanying printed guide and online at www.ncl.ac.uk/postgraduate/courses

Accounting and Finance	Culture, Heritage and Museum Studies	History, Archaeology and Classics
Agriculture and Food	Dentistry	International Relations and Politics
Architecture, Urban Studies and Planning	Development	Languages, Linguistics
Arts and Creative Industries	Education	Law and Justice
Biomedical, Biotechnology and Biosciences	Electrical Engineering	Marine Engineering
Business, Management and Marketing	Energy	Mechanical Engineering
Cell and Molecular Biosciences	English Literature and Film	Media, Journalism and Communication
Cellular Medicine	Environment, Sustainability and Climate Change	Medical Education
Chemical Engineering	Genetic Medicine	Neuroscience
Chemistry	Geography	Psychology
Civil Engineering	Geology	Sociology
Computer Science, Data and IT	Health and Society (Public Health)	Transport Logistics and Marine

Our research choices

Explore our range of postgraduate degrees including PhD, MPhil, MD, professional doctorates and Master's degrees by research in our separate *International Postgraduate Course Guide 2019* and online at www.ncl.ac.uk/postgraduate/degrees/research

The small print

Disclaimers

Although great care has been taken in compiling this Guide, it is for the general guidance of prospective students only. This publication is intended for those who are interested in applying for admission to the University in 2019 and is intended as advance publicity for information and guidance purposes only. Details included are correct at the time of going to press in August 2018. The most up-to-date and detailed source of information at any time is the postgraduate website at www.ncl.ac.uk/postgraduate

The matters covered by this publication are naturally subject to change from time to time, both before and after a candidate's admission. Unavoidable changes may on occasion have to be made, affecting the availability of degree programmes, subjects, modules and options within degree programmes, and of additional opportunities such as placements, field trips and exchange visits. Reasons for change could include timetabling issues, changes in staff, requirements of programme accrediting bodies, to reflect academic changes within subject areas, or due to minimum student numbers on a course.

Full details of the University's terms and conditions, including reference to all relevant policies, procedures, regulations and information provision are available at www.ncl.ac.uk/pre-arrival/regulations

The University is not responsible for the content of any websites which do not form part of the Newcastle University domain (www.ncl.ac.uk) and whose addresses are given in this publication.

Equal opportunities

The University's Equality Strategy is our public declaration of our commitment to develop a fully inclusive University community, which recruits and retains talented staff and students from all sectors of society equally.

www.ncl.ac.uk/diversity

Alternative formats

We can provide information on any of our courses, and on student life in Newcastle, in alternative formats. Please contact Student Services (see below) for more information.

The University is committed to making our website and the material provided on it as accessible as possible.

www.ncl.ac.uk/info/accessibility

Student Services

Telephone:
+44 (0) 191 208 3333

Enquire online:
www.ncl.ac.uk/enquiries

Acknowledgements

Edited by: Corporate Affairs Directorate, Newcastle University.

Design: Aspire Design.

Photography: P Appleby; D Bell; C Bishop; J Donoghue; J Fish; P Haswell; High Level Photography; M Horne; iStock; G Kirkwood; NewcastleGateshead Initiative; G Peacock; M Urwin; S Veit-Wilson; A Wallace.

Thanks to all our staff and students who took part in photography for this Guide.

Printing: Statex Colour Print.

Typeset in Bariol and Clarendon.

This publication is printed on Cocoon Silk, a coated 100% recycled paper with FSC recycled certification.

© Newcastle University, 2018.

The University of Newcastle upon Tyne trading as Newcastle University.

Meet, explore, visit

There are plenty of opportunities to find out more about postgraduate study at Newcastle University...



Global events

We regularly travel overseas to meet with students interested in studying at Newcastle University. Review our international listings to find out when we may be in your country or a city near you: www.ncl.ac.uk/international/meet-us

Our global education agents can also provide advice on studying with us and help you with your application. To find your nearest agent visit our country pages at www.ncl.ac.uk/international/country



Online events and resources

You don't have to live in the UK to explore the campus and city.

- Take a virtual tour www.ncl.ac.uk/tour or search 'Newcastle University' in Google maps
- Watch a live campus tour via our social channels www.facebook.com/pg/newcastleuniversity/videos
- Make social connections www.ncl.ac.uk/info/socialmedia
- Watch our videos and see what students love about the campus and city www.ncl.ac.uk/lovenewcastle
- Check for online events: www.ncl.ac.uk/postgraduate/meet-us/#virtualevents



Events on campus

If you are in the UK, even just for a short visit, we would love to welcome you onto our campus.

Our next Postgraduate Open Day is on Wednesday 6 February 2019, where you can:

- speak to academics about postgraduate study here
- attend a study and funding talk
- take a postgraduate campus tour

Details and booking information can be found at www.ncl.ac.uk/postgraduate/meet-us

Getting here

Excellent transport links with other major UK cities and an international airport make Newcastle a truly accessible destination.

Download full maps and travel directions at www.ncl.ac.uk/about/visit/maps



By car

As the city is compact, you won't need a car as most places are within a 15-minute walk of the University campus. Students mostly get around the city by walking, bike, bus and Metro.



By train

Newcastle is located on the East Coast mainline with fast and direct trains to London every 30 minutes. There are also direct services to other major UK cities, including:

Destination	Travel times (approx)
London	2 hrs 50 mins
Edinburgh	1 hr 30 mins
Manchester	2 hrs 35 mins
Leeds	1 hr 25 mins
Birmingham	2 hrs 50 mins



By plane

Newcastle International Airport has regular direct flights to over 80 worldwide destinations including:

Destination	Travel times (approx)
Dubai	7 hrs 30 mins
New York	7 hrs 45 mins
London	1 hr 15 mins
Bristol	1 hr 5 mins
Paris	1 hr 45 mins
Amsterdam	1 hr 20 mins
Berlin	2 hrs 5 mins
Dublin	1 hr 5 mins



By Metro

Like the London tube, the Newcastle Metro links the airport, train station, local suburbs and towns on the coast. Its fast, frequent and cheap.



The city



- 1 Newcastle University campus
- 2 Haymarket Metro station
- 3 Northumberland Street (main shopping street)
- 4 intu Eldon Square shopping centre
- 5 St James' Park
- 6 Newcastle University Business School
- 7 Tyne Bridge
- 8 Quayside cafés, bars and restaurants

Student Services

Newcastle University, King's Gate
Newcastle upon Tyne NE1 7RU
United Kingdom

Further information

Telephone: 0191 208 3333 (+44 191 208 3333)

Enquire online: www.ncl.ac.uk/enquiries

www.ncl.ac.uk

This publication is intended as advance publicity for information and guidance purposes only and does not constitute a contract (see page 54). Details included are correct at the time of going to press in August 2018. The most up-to-date and detailed source of information at any time is the postgraduate website www.ncl.ac.uk/postgraduate

**When you have finished with this publication
please recycle it**