

2021
Whakatairanga Tāura
Postgraduate Prospectus



CHANGE THE WORLD

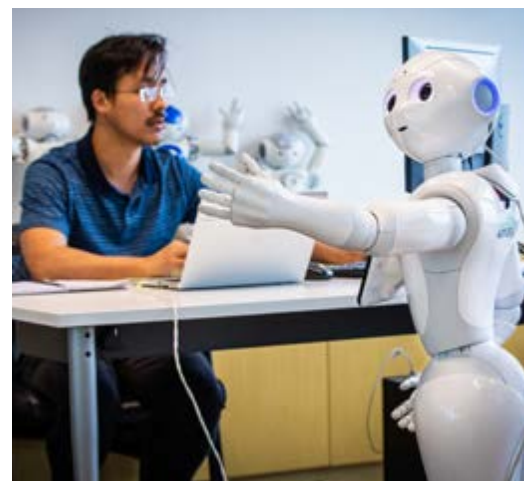




FUTURE FORWARD

'I know that every day I spend on my research, is geared towards improving the lives of people.'

Charles
PhD in Health Sciences



Contents

Why UC?

- 1 Kia ora
- 2 Why postgrad?
- 4 What makes UC distinct?
- 6 Innovative research
- 8 Study options

Study options

- 9 UC qualifications
- 12 UC postgraduate qualifications
- 14 UC Aho Hīnāture | UC Accelerator
- 15 Toi Tangata | Arts
- 20 Umanga | Business
- 24 Ako | Education
- 30 Pūkaha | Engineering

- 34 Kōwaiwai | Fine Arts
- 36 Ngahere | Forestry
- 38 Hauora | Health Sciences
- 42 Ture | Law
- 44 Puoro | Music
- 46 Hanga Otinga | Product Design
- 48 Pūtaiao | Science
- 53 Tauwhiro Hapori | Social Work
- 55 Hauora Reo | Speech and Hearing

Lifestyle and support

- 58 The Ōtautahi Christchurch lifestyle
- 59 Accommodation
- 60 Support
- 62 Careers

Apply and enrol

- 63 Apply and enrol
- 64 How do I apply and enrol?
- 66 International students
- 68 How can I finance my studies?
- 69 Important dates

Rainbow Diversity Support



UC is proud to partner with Ngāi Tūāhuriri and Ngāi Tahu to uphold the mana and aspirations of mana whenua.

Published Rima September 2020.
Information is correct at the time of print, but is subject to change. The University's official regulations are at www.canterbury.ac.nz/regulations

Kia ora

**Nau mai ki te
Whakatairanga Tāura.
Welcome to the
Postgraduate Prospectus.**

Kōkiri mai rā e ngā mana
puipuiaki, e ngā reo tongarerewa
ki Te Whare Wānanga o Waitaha.
E tau mai nei!

Indigenous knowledge and innovation, robotic farming to combat climate change, award-winning artists, brainwaves and criminal behaviour ... are a handful of examples of what UC's postgraduates and doctoral students have been up to.

Take a look in this guide to find your study pathway — whether you're keen to answer big questions, level up in your career, or learn a new one, we offer coursework-based qualifications as well as research-based qualifications.

At UC, we say tangata tū, tangata orā, which means we celebrate people prepared to make a difference. We celebrate postgraduate students for the passion and perspective they bring to their chosen areas. There are plenty of applied programmes, exciting projects, academic and extracurricular opportunities, a community of students with varying backgrounds and interests, and cutting-edge facilities — all of which you can avail to make your time with us the most meaningful it can be.

‘Everyone’s here because we want to be. The lecturers are passionate and inspirational, it’s a wonderful environment and we all get caught up in the excitement of learning.’

Courtney — HEALTHIER FARMS AND FORESTS.

Studying towards a Master of Science in Environmental Science





120+

*qualifications in subjects ranging
from Art Curation to
Water Resource Management
to choose from*

Why postgrad?

Are you curious about a specialist topic? Maybe you want to develop your career, or change direction completely?

Te Whare Wānanga o Waitaha | University of Canterbury (UC) welcomes students, ākonga, from all backgrounds. Whatever your life and career goals, UC has over 120 graduate and postgraduate qualifications on offer and provides the support to help you achieve them.

Advantages of further study

Graduate and postgraduate study can provide you with:

- specialist skills and applied experience
- enhanced knowledge in topics you care about
- entry into specific occupations
- the opportunity to conduct original research
- smaller classes and closer links with staff
- evidence of high academic attainment and self-discipline
- financial security – research shows that study at postgraduate level (master's and PhD) could give you a salary advantage.

Prepared to make a difference

Postgraduate or graduate study could be the ticket to a more influential and interesting career, be it in research or leadership roles, or having the knowledge and practice to effect positive change.

UC ākonga gain more than just intellectual skills and professional knowledge; our graduates are work-ready, culturally aware, willing to play an active role in the community, and globally connected. See [page 4](#).

Study options to suit

UC offers a broad base of higher qualifications in many subjects – from Accounting to Writing.

You could work towards any of the following qualifications:

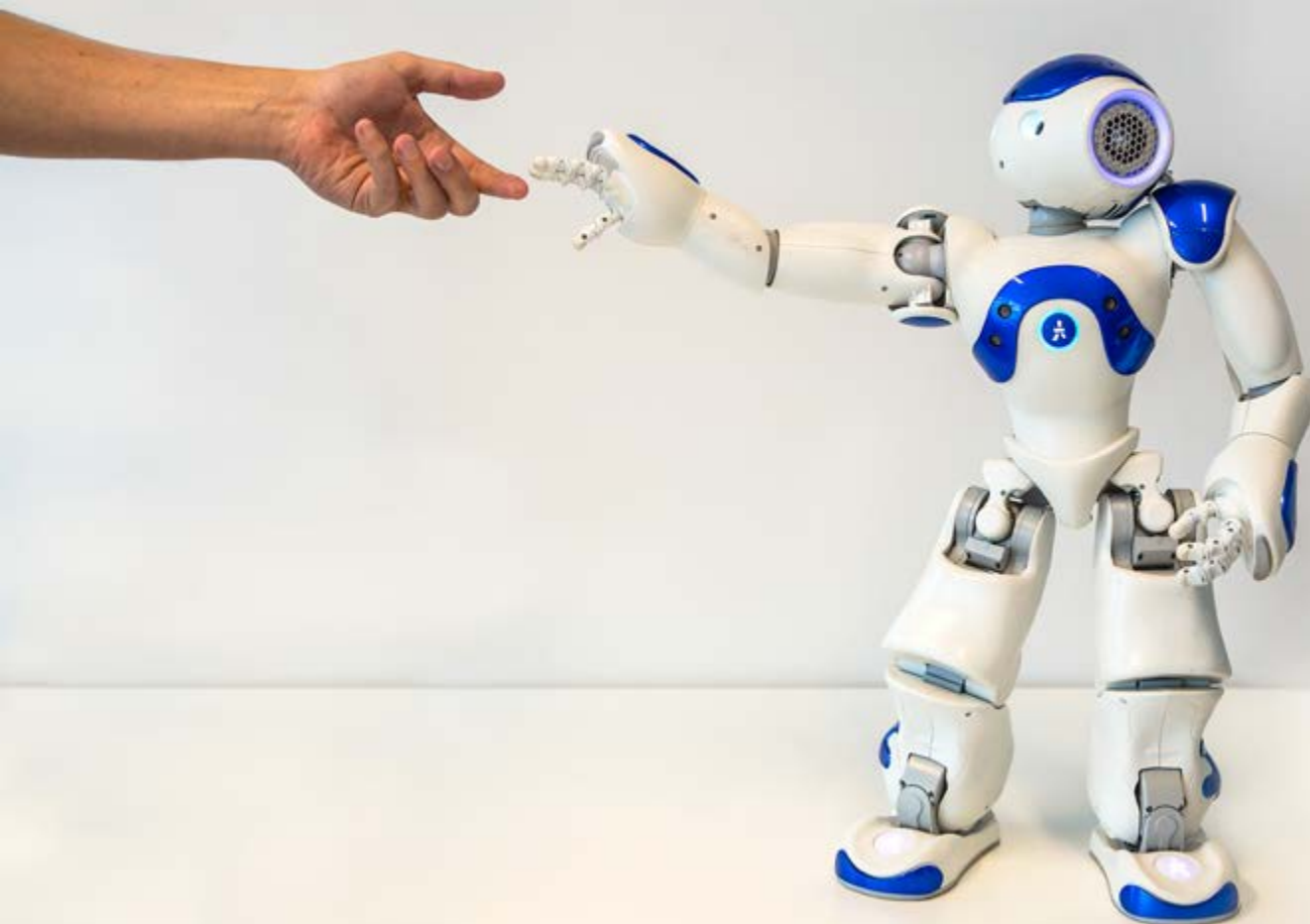
- honours degree
- graduate certificate or diploma
- postgraduate certificate or diploma



‘Attending UC was the best decision of my life because it nurtured my passion and led me to the career I want to pursue. UC is a beautiful campus and the School of Music has amazing and supportive staff.’

Grace

*Ngāpuhi, Ngāti Kahungunu
Bachelor of Music with Honours
Music Specialist, The Champion Centre
Retail Assistant, Sedley Wells Music Works*



- coursework-based (“taught”) master’s degree
- research master’s degree
- doctoral programme, including the Doctor of Philosophy (PhD).

See a list of qualifications on [page 12–13](#). For more on these qualifications, see [pages 9–11](#).

Flexible learning

To help you balance study with lifestyle and other commitments, UC supports flexible learning. Depending on the qualification, you could do block courses, online learning, or study part-time.

Join a connected community

There are many ways that UC enhances the postgraduate academic and social experience.

Resources and facilities

- World-class facilities ([page 5](#))
- Library research resources and advice ([page 6](#))
- Some research students have access to dedicated office space and specific resources (contact the relevant department for details)
- Tutoring and research work opportunities ([page 62](#)).

Industry connections

- Interaction with staff members increases at postgraduate level (see [page 6](#) and www.canterbury.ac.nz/student-profiles)
- Applied learning experiences are available in the field, in the community, and in business ([page 5](#))
- Research centres, institutions, and hubs open up opportunities ([pages 6–7](#)).

Support systems

UC has a wealth of groups and support services for you to tap into, from orientation events to the Postgraduate Students’ Association, and on-campus childcare facilities to academic and advisory services ([pages 60–61](#)).

Alumni network

Each year over 1,000 postgraduate students complete their higher qualification at UC, joining the alumni network of over 141,000 graduates around the world who are already making a difference. When you join the UC alumni community, which is free and automatic on graduation, you are connected to a vibrant and active group of UC friends, allowing you to keep in touch with each other and the University.

www.canterbury.ac.nz/alumni

At a glance

9 new postgraduate and graduate qualifications were offered in 2020

22% of students at UC are postgraduates

400+ research degrees were completed in 2019



\$185,000

*on offer for UC's student
innovators and entrepreneurs*

What makes UC distinct?

UC has a strong reputation for high-quality degrees, research-active teaching staff, and world-class facilities.

A university with a national research standing and international connections, UC's students, ākonga, and staff are well placed to make an impact in the local and global community.

International rankings

UC's academic programmes consistently achieve international recognition.

- UC has many eminent academic programmes and is ranked in the top 100 in the world in Civil and Structural Engineering, and Linguistics.*
- UC is ranked in the top 150 universities in the world in Accounting and Finance, Earth and Marine Sciences, Geography, and Law.
- UC is in the top 200 universities in the world in Education, Environmental Science, and Philosophy, and Political Science and International Relations.*

A leading research institution

With a 140-year tradition of research excellence and external research income of over \$63 million, UC is an important research university in Australasia. See **pages 6–7**.

Globally connected

- UC is the only Aotearoa New Zealand university to be a member of the AC21 Academic Consortium; 15 of the world's leading research universities.
- UC's Te Kura Umanga | Business School is accredited by the Association to Advance Collegiate Schools of Business; EFMD Quality Improvement System; and Association of MBAs. This 'Triple-Crown' places it in the top one percent of business schools globally.
- Engineering programmes are accredited by Engineering New Zealand, which is a signatory to the Washington Accord.



'Having seen a number of universities around the world, I am so glad that I studied at Canterbury.'

Sanjaya

Master of Commerce in Accounting and Information Systems
Lecturer, University of South Australia

* QS World University Rankings by Subject, 2020.



- Students benefit from the renowned Erskine Fellowship programme at UC, which enables around 75 international experts to teach and conduct seminars here most years.
- UC maintains partnership agreements with 60+ distinguished universities around the world. This gives our students the chance to study overseas.
- We also welcome students from some partner institutions who can study part of their degree at UC.

www.canterbury.ac.nz/engage/partnerships

From art gallery to augmented reality

At UC, you'll learn and research in world-class facilities:

- the Rutherford Regional Science and Innovation Centre (RRSIC), with state-of-the-art specialist teaching and research laboratories
- The Makerspace
- Aotearoa New Zealand's largest structural engineering lab
- an augmented reality lab
- an art gallery
- a nanofabrication laboratory
- a financial trading room
- speech and language clinics
- a moot court room

- a sports science centre
- the foremost Greek and Roman antiquities collection in the Southern Hemisphere.

Entrepreneurs and explorers

UC provides a wealth of active learning experiences to challenge, connect, and inspire.

- UC has field stations from Antarctica to Kawatiri Westport. It also operates the country's premier astronomical research facility at Ōtehiwāi Mount John, Takapō Tekapo, and a field station in Nigeria.
- Te Pokapū Rakahinonga | Centre for Entrepreneurship provides a range of opportunities to gain skills and knowledge in commercialisation and innovation, through programmes such as our Incubator, UC Summer Startup, UCE disrupt Challenge Series, and other competitions.
www.canterbury.ac.nz/business/uce
- Many postgraduate courses include practical, real-world components such as industry placements, internships, projects, or fieldwork.
- Initiatives like the Sustainability Challenge engage students and industry in solving community issues on a global scale.
- Global study experiences are on offer, including the opportunity to go on an exchange to a partner university.

At a glance

1.9

million research items in UC's three libraries

140

years of world-leading research at UC

100

thousand resources in UC's Māori heritage collection

Active campus lifestyle

UC has a central, student-friendly campus set in 87 hectares of park-like surroundings. You can enjoy a number of amenities and facilities, all within minutes of each other, including 12 cafés, eateries, and bars. Students also have access to a health centre, pharmacy, recreation facilities, a bookstore, post services, and ATMs on campus.

Why UC?

www.canterbury.ac.nz/get-started/why-uc



\$9.8M

*awarded to UC in 2019 to
leverage 3D printing capabilities
to create materials, tools, and
techniques to design and optimise
industrial equipment*

Innovative research

UC is an important research university in Australasia, and academic staff regularly collaborate with researchers, business, and community groups, helping students learn at the cutting-edge of innovation.

Accessible experts

Postgraduate students have access to internationally respected teachers and supervisors. For a glimpse of staff and postgraduate students' expertise, search the database of UC's current researchers and research projects.

<https://researchprofile.canterbury.ac.nz>

You can also read about some of the projects, partnerships, and ground-breaking findings at UC in the Research Reports found at www.canterbury.ac.nz/research/specialties/research-report

The UC Research Repository is an open-access database of original research by Waitaha Canterbury academics, researchers, and postgraduate students. It brings UC-authored research to a broad audience.

<https://ir.canterbury.ac.nz>

Research-informed teaching

Our programmes are research-led, with academic staff who actively research and publish in their specialist areas. Lecturers and researchers regularly receive international and national awards for their work.

A team of international experts with strong research and entrepreneurial profiles in the fields of immersive technologies and applied gaming will work primarily with postgraduate students in Tangata Hangarau, Hangarau Tangata Human Interface Technology Laboratory (HIT Lab NZ), and also teach into UC's Te Kura Hanga Otinga | School of Product Design.

UC researchers are playing lead roles in many of the eleven National Science Challenges and the ten Centres of Research Excellence funded by government.

Teaching and supervision up to PhD level is available in most subjects.

Exceptional resources

Te Puna Mātauraka o Te Whare Wānanga o Waitaha | UC Library is accessible online 24/7, and has a research collection of over 1.9 million items and access to more than 45,000 periodicals. Specialist subject librarians provide support across all disciplines. UC's three libraries house specialist collections including:

- Te Puna Mātauraka o Te Whare Wānanga o Waitaha | Central Library with law, arts, social sciences, education, and health sciences materials.
- Specialist collections include Antarctica, De Jong (Asian religions and history, especially Hinduism and Buddhism), European Union, and New Zealand government publications.
- Te Puna Pūkaha me te Pūtaiao | Engineering and Physical Sciences (EPS) Library (engineering, forestry, physics and astronomy, chemistry, computer science, biological and geological sciences, and mathematics and statistics).
- Te Puna Rakahau o Macmillan Brown Macmillan Brown Library holds Aotearoa and Pacific Islands material, including a collection of about 100,000 books, journals, and drawings.



Leading centres and institutes

UC is home to over 40 recognised research centres, institutes, and labs. The centres attract and retain high-calibre academic staff, gain media interest, and offer exciting research and work opportunities at postgraduate level. Here are a few examples:

- Te Hiranga Rū | Quake CoRE: New Zealand Centre for Earthquake Resilience www.quakecore.nz
- Biomolecular Interaction Centre www.canterbury.ac.nz/bic
- Te Kāhui Roro Reo | New Zealand Institute of Language, Brain and Behaviour (NZILBB) www.canterbury.ac.nz/nzilbb
- Toi Hangarau | Geospatial Research Institute (GRI) www.geospatial.ac.nz
- Macmillan Brown Centre for Pacific Studies www.canterbury.ac.nz/mbc
- National Centre for Research on Europe www.canterbury.ac.nz/ncre
- Kā Waimaero | Ngāi Tahu Research Centre www.canterbury.ac.nz/ntrc
- Spatial Engineering Research Centre www.canterbury.ac.nz/serc
- Wireless Research Centre www.canterbury.ac.nz/wrc
- Electric Power Engineering Centre (EPECentre) www.canterbury.ac.nz/epecentre
- Gateway Antarctica www.canterbury.ac.nz/science/schools-and-departments/antarctica

- Centre for Bioengineering www.canterbury.ac.nz/engineering/schools/mechanical/research/bioengineering
 - Te Taiwhenua o te Hauora | GeoHealth Laboratory www.canterbury.ac.nz/science/research/geohealth
 - Hangarau Tangata, Tangata Hangarau Human Interface Technology Laboratory of New Zealand (HIT Lab NZ) www.hitlabnz.org
 - New Zealand Centre for Human-Animal Studies www.canterbury.ac.nz/nzchas
 - Te Puna Whakaora Rehu Ohotata Rose Centre for Stroke Recovery and Research www.canterbury.ac.nz/rosecentre
 - Waterways Centre for Freshwater Management www.waterways.ac.nz
- www.canterbury.ac.nz/departments-colleges/research-centres

Partner organisations

UC is a major partner organisation of the MacDiarmid Institute for Advanced Materials and Nanotechnology, the New Zealand ICT Innovation Institute (NZi3), and the Waterways Centre for Freshwater Management.

UC research
www.canterbury.ac.nz/research/news

At a glance

\$83k research income per academic full-time equivalent in 2019

40+ recognised research centres, institutes, and hubs are based at UC

3rd UC is ranked #3 in Aotearoa New Zealand for research intensity of its academic staff*

* The TEC Performance-Based Research Fund Assessment, 2018.

Study options



Does UC have a qualification to suit me?

With 120+ qualifications available in 150 subjects, UC is likely to have a graduate or postgraduate qualification that suits your interests and goals.

Graduate certificates and diplomas

Most graduate qualifications can be taken by ākonga, students, with a bachelor's degree in an unrelated area, allowing you to change subject focus. This can enhance the value of your undergraduate degree, or be a first step to a new career or further study.

Some graduate qualifications, for example the Graduate Diploma in Teaching and Learning (Early Childhood), are professional qualifications that prepare you for a specific career.

Graduate studies typically involve taking advanced undergraduate courses).

Some graduate certificates can be completed in six months of full-time study. Graduate diplomas can typically be completed in one year of full-time study.

Honours degrees

An honours degree allows you to delve deeper and more rigorously into the subject you are passionate about. It involves a personalised study programme in the subject of your first degree; typically taking one year of full-time coursework which will include a research component.

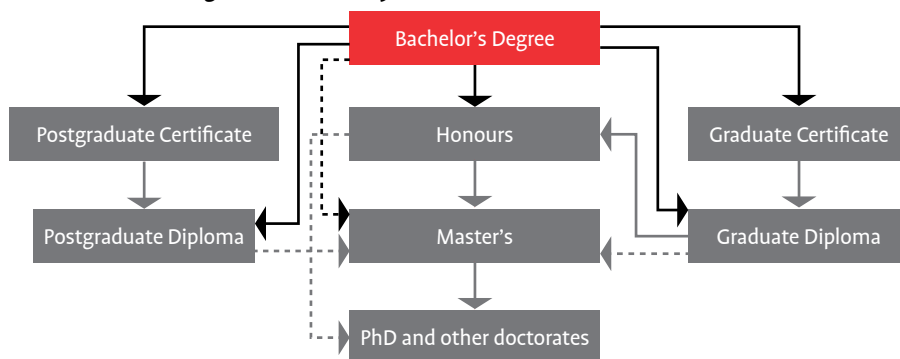
Usually ākonga, students, need to have good final undergraduate grades to be eligible. However, prerequisites vary between subjects — you will need to check with the relevant school or departmental website.

Honours degrees are often a pathway to further study; for instance, ākonga who complete to a satisfactory standard may be able to progress to a master's degree by thesis only.

Postgraduate certificates and diplomas

Postgraduate certificates and diplomas develop higher level understanding and specialist skills, often in the same area as your first degree (and in some instances count prior professional experience for entry consideration).

Graduate and Postgraduate Pathways



---> Indicates pathways are possible in some programmes. Please contact the relevant college, school or department or see www.canterbury.ac.nz/courses for individual qualification entry requirements.

Postgraduate certificates can offer a specialised professional development opportunity and can often be completed in six months of full-time study (or part-time equivalent). They can be an ideal first step towards higher study.

Postgraduate diplomas are longer and more in-depth than postgraduate certificates, and are similarly aimed at ākonga, students, looking for professional development and/or considering more advanced study. As well as offering structured courses, many allow you to undertake an independent project or research. They can typically be completed in one year of full-time study, or part-time for up to two years.

Master's degrees

UC offers three types of master's degrees:

- research master's
- coursework ("taught") master's
- a combination of both.

A research master's degree advances your knowledge, and enables you to conduct a significant piece of independent research (with supervision). If you are intending to conduct research, you should investigate potential supervisors before applying to study at UC. See the searchable database of current researchers at <https://researchprofile.canterbury.ac.nz> www.canterbury.ac.nz/postgraduate/masters-study

A coursework master's (or taught master's) degree provides a structured programme of taught courses at an advanced level. In some cases, a taught master's can allow you to undertake study in a different professional area from that of your first degree (and so can facilitate a change of career focus). As well as the course component, many offer applied learning opportunities, such as an independent project or industry placement.



'I had always heard that people are very warm and welcoming in New Zealand; couple that with a world-class research institute like UC and the outdoor activities Christchurch presents, it was a very simple decision to choose NZ.'

Anurag

Studying towards a PhD in Mechanical Engineering
Industrial PhD Student Intern, Talbot Technologies



A number of UC's master's programmes allow for a combination of both courses and research. Regardless of form, gaining a master's degree is evidence of high academic attainment, specialist understanding, and advanced critical evaluation, research, interpretation, and communication skills.

Doctoral studies

UC offers three doctoral programmes:

- Doctor of Philosophy (PhD)
- Doctor of Musical Arts (DMA)
- Doctor of Education (EdD).

Doctor of Philosophy (PhD)

The UC PhD is a research-only degree carried out under expert supervision and using world-class facilities. At UC, you can complete a PhD in over 80 subjects, joining over 1,000 ākonga, students, from 60 different nations.

A PhD involves extensive, sustained, and original research and study in your chosen subject, with the results being presented in a thesis that will contribute to intellectual knowledge of the field. It is a mark of intellectual ability, self-discipline, and commitment. A PhD prepares you for a number of careers, including as an academic.

In addition to expert supervision, UC gives all doctoral students opportunities to gain transferable skills in areas including communication of research, networking, career planning, databases, statistical analysis, ethics, professional practice, and cultural awareness.

The minimum period of enrolment for a full-time PhD student is three years; most will take between three to four years.

International students

While completing a PhD in Aotearoa New Zealand, you and your whānau are eligible for a number of benefits, including:

- domestic fee rates
- open work visa for partners
- the opportunity to apply for a three-year work visa on PhD completion
- the ability to enrol your child(ren) in Aotearoa New Zealand's free State schools.

NOTE: Certain conditions apply. www.immigration.govt.nz

Applying for a PhD

Students who wish to do a PhD need a research-focused honours or master's degree at first-class or second-class division 1 level (or equivalent qualifications). Intending PhD students must contact and have agreement from a potential supervisor before applying. Information about the research interests of academic staff (supervisors) can be found on the relevant department website or the UC Research Profile database at <https://researchprofile.canterbury.ac.nz>

Applications will not be approved until a ZOOM/Skype interview has taken place

www.canterbury.ac.nz/postgraduate/phd-and-doctoral-study

Doctor of Musical Arts (DMA)

The Doctor of Musical Arts allows students to undertake advanced research in music composition or performance. It involves scholarly research in the form of a supervised research thesis, and performance practice in the form of public music performance or the presentation of compositions. Students make a significant contribution both intellectually and in practice to either the interpretative and/or technical practice of musical performance, or the technical and creative practice of musical composition.

The application process usually requires an audition, interview, and/or submission of previous academic work with a recommendation from Te Kura Puoro | School of Music. For more information, see **page 44**.

Doctor of Education (EdD)

The Doctor of Education is a specialised doctorate designed for professionals in Education, Health Sciences, and related fields. The EdD builds leadership and commitment, fosters scholarly excellence, and allows students to connect educational research with questions of professional practice, especially leadership. Part I of the EdD is a research portfolio that can be done part-time over two years, then followed by a thesis. For more information, see **page 28**.



Frequently asked questions

How long will it take?

Qualifications vary in length – graduate and postgraduate certificates can be completed in six months of full-time study, while a PhD is typically completed in three to four years of full-time study.

www.canterbury.ac.nz/courses

Do you offer flexible arrangements?

Part-time study

Many qualifications can be studied part-time, but this may require approval and may not be automatic – the criteria considered include employment, immigration status, health, and family circumstances.

www.canterbury.ac.nz/regulations

Studying by distance

Although most programmes are taught on campus, a few can be studied by distance. Course material is provided online and students participate in lectures through an interactive learning platform. This is possible in programmes such as Teaching English to Speakers of Other Languages, and some Teacher Education programmes. Contact Te Rāngai Ako me te Hauora | College of Education, Health and Human Development for advice.

www.canterbury.ac.nz/education

Can I study just one course?

A student may enrol in a single course. However, entry is based on the idea that you are enrolling without intending to credit it to a degree. Upon completion and with approval, you can gain a Certificate of Proficiency for that course.

UC offers short courses for professionals working in the engineering or business sectors. See [page 32–33](#) for engineering courses.

www.canterbury.ac.nz/engineering/professional-development

What type of qualification are you looking for?

Graduate and postgraduate students come from a variety of backgrounds, with different personal commitments, academic competencies, life aspirations, and career goals. From career changers to graduates straight out of their first degree, UC has a range of study options, see [pages 12–56](#).

Unsure or need advice?

It's a good idea to thoroughly research your desired career path before you decide on your next step. These resources can help:

- read what UC postgraduate students have gone on to achieve in their studies, lives, and careers in our profile stories.
www.canterbury.ac.nz/student-profiles

- visit Te Rōpū Rapuara | UC Careers and meet one-on-one with a career consultant to explore your career plans and aspirations (see [page 62](#)). www.canterbury.ac.nz/careers
- speak to a student advisor or academic manager to discuss prerequisites and course options. www.canterbury.ac.nz/support/academic/advisors
- plan your career destination at Mana Rapuara Aotearoa | Careers NZ. www.careers.govt.nz

Dean of Postgraduate Research

T: +64 3 369 2244

E: postgraduate-office@canterbury.ac.nz
www.canterbury.ac.nz/research

UC postgraduate qualifications

Postgraduate honours degrees*

Qualification	Page
Bachelor of Arts with Honours	17
Bachelor of Commerce with Honours	22
Bachelor of Music with Honours	45
Bachelor of Science with Honours	51

Graduate certificates and diplomas

Qualification	Page
Graduate Certificate in Sport Coaching	40
Graduate Diploma in Arts	17
Graduate Diploma in Commerce	22
Graduate Diploma in Criminal Justice	43
Graduate Diploma in Teaching and Learning (Early Childhood)	26
Graduate Diploma in Journalism	17
Graduate Diploma in Māori Language and Pedagogies: Aumiri Pounamu	27
Graduate Diploma in Science	51
Graduate Diploma in Strategic Communication	17
Graduate Diploma in Teaching and Learning (Primary Education or Secondary Education)	26

* Other honours degrees at UC are studied as part of an undergraduate programme.

Note: this list does not include qualifications that are not open to new enrolments in 2021.



Postgraduate certificates and diplomas

Qualification	Page
Postgraduate Certificate in Antarctic Studies	51
Postgraduate Certificate in Architectural Engineering	32
Postgraduate Certificate in Arts	17
Postgraduate Certificate in Business	22
Postgraduate Certificate in Civil Engineering	32
Postgraduate Certificate in Cognitive Behaviour Therapy**	51
Postgraduate Certificate in Counselling Studies	40
Postgraduate Certificate in Digital Humanities	17
Postgraduate Certificate in Education	27
Postgraduate Certificate in Engineering	32
Postgraduate Certificate in Geospatial Science and Technology	51
Postgraduate Certificate in Health Sciences	40
Postgraduate Certificate in Information Systems and Technology	22
Postgraduate Certificate in Māori and Indigenous Leadership	17
Postgraduate Certificate in Palliative Care	40
Postgraduate Certificate in Product Design	47
Postgraduate Certificate in Product Innovation	47
Postgraduate Certificate in Science	51
Postgraduate Certificate in Sport Science	40
Postgraduate Certificate in Strategic Leadership	22
Postgraduate Certificate in Teaching English to Speakers of Other Languages	28
Postgraduate Certificate in Te Reo Māori	17
Postgraduate Certificate in Tertiary Teaching	27
Postgraduate Diploma in Applied Data Science	32, 51
Postgraduate Diploma in Art Curatorship	17, 35
Postgraduate Diploma in Arts	17
Postgraduate Diploma in Business	22
Postgraduate Diploma in Business Administration	23
Postgraduate Diploma in Business Information Systems	23
Postgraduate Diploma in Child and Family Psychology	40
Postgraduate Diploma in Clinical Psychology	51
Postgraduate Diploma in Cognitive Behaviour Therapy**	51
Postgraduate Diploma in Education	27
Postgraduate Diploma in Fine Arts	35
Postgraduate Diploma in Forestry	37
Postgraduate Diploma in Geospatial Science and Technology	51
Postgraduate Diploma in Health Sciences	40
Postgraduate Diploma in Information Systems and Technology	23
Postgraduate Diploma in Science	51
Postgraduate Diploma in Sport Science	41
Postgraduate Diploma in Te Reo Māori	17
Postgraduate Diploma in Teaching and Learning (Primary Education or Secondary Education)	26
Postgraduate Diploma in Water Resource Management	51

** subject to Te Pūkai Tara | Universities New Zealand CUAP approval.

Master's degrees

Qualification	Page
Master of Antarctic Studies	51
Master of Applied Data Science	32,51
Master of Applied Finance and Economics	23
Master of Applied Translation and Interpretation	15, 18
Master of Architectural Engineering	32
Master of Arts	18
Master of Arts (Thesis)	18
Master of Audiology	56
Master of Business	23
Master of Business Administration (MBA)	21, 23
Master of Business Information Systems	23
Master of Civil Engineering	32
Master of Commerce	21, 23
Master of Counselling	39, 41
Master of Criminal Justice	43
Master of Disaster Risk and Resilience	48, 52
Master of Education	25, 28
Master of Engineering	32
Master of Engineering in Fire Engineering	32
Master of Engineering in Management	33
Master of Engineering in Transportation	33
Master of Engineering Studies	33
Master of European Union Studies	18
Master of Financial Engineering	48, 52
Master of Fine Arts	35
Master of Forestry Science	37
Master of Health Sciences	38, 41
Master of Health Sciences Professional Practice	41
Master of Human Interface Technology	33
Master of International Relations and Diplomacy	15,18
Master of Laws	43
Master of Laws (International Law and Politics)	43

Qualification	Page
Master of Linguistics	18
Master of Māori and Indigenous Leadership	18
Master of Music	45
Master of Policy and Governance	18
Master of Product Design	47
Master of Product Innovation	47
Master of Professional Accounting	23
Master of Science	52, 56
Master of Social Work	54
Master of Social Work (Applied)	54
Master of Spatial Analysis for Public Health	52
Master of Specialist Teaching	28
Master of Speech and Language Pathology	56
Master of Sport Science	39, 41
Master of Strategic Communication	18
Master of Teaching and Learning (Primary Education or Secondary Education)	24, 26
Master of Teaching English to Speakers of Other Languages	28
Master of Te Reo Māori	18
Master of Urban Resilience and Renewal	48, 52
Master of Water Resource Management	52
Master of Writing	19
Professional Master of Computer Science	52
Professional Master of Engineering Geology	52
Professional Master of Geospatial Science and Technology	52

Doctorates

Qualification	Page
Doctor of Education	25, 28
Doctor of Musical Arts	10, 45
Doctor of Philosophy (PhD)	10



‘I really appreciated the supportive environment that is available at UC. What set Canterbury apart from other institutions for me was the responsiveness of the faculty to the needs of the students. I loved the fact that my research supervisors were invested and interested not only in my academic success but also in my wellbeing overall.’

Trudy-Ann

PhD in Education

Vice Principal of Academic Affairs, Edna Manley College of the Visual and Performing Arts, Jamaica

UC Aho Hīnātore | UC Accelerator Scholarship

UC has always been a change maker in the face of unprecedented challenges. In this vein, we're offering 30 new postgraduate scholarships for our most promising students – both current and recent graduates – to help you successfully transition to PhD studies at UC.

UC Aho Hīnātore | UC Accelerator Scholarship

The UC Aho Hīnātore | UC Accelerator Scholarship is a multipart award, comprising:

- a paid 3-month supervised research project worth \$6,000
- a PhD scholarship of \$28,000 per annum plus tuition fees

Aho hīnātore

'Aho hīnātore' refers to a luminescent light. The name of this scholarship draws on the metaphor of light and enlightenment as this award will be supporting the best and brightest tāura, postgraduate students, through their PhD journey.

'Hīnātore' has a number of meanings. On its own, it refers to a twinkle or glimmer of light. It is also a kupu, word, we use to acknowledge an enlightened or wise person.

The word 'aho' too has several meanings, including 'to shine' or 'radiant light.' It is also the word used to describe a cord or line, such as a fishing line. In this context, 'aho' is a metaphorical connection that links our tāura to UC's support network.



Eligibility

If you have recently completed your studies at UC prior to February 2021, with a minimum GPA of 7, and qualify for admission to the PhD at UC, we will start you off with a \$6,000 scholarship to complete a three-month supervised research project. This will give you a taste of a research career and what it is like to work with the supervisory team.

If you do not qualify for direct admission into the PhD programme, then your accelerator project may be used as the qualifying research experience for entry to the PhD, subject to approval by the Dean of Postgraduate Research. This approval must be received prior to applying for the scholarship.

Students are ineligible for this award if they are employed full-time; are enrolled in a course during the duration of the project; and/or international students who do not have a valid visa for the duration of the project.

Applying for a scholarship

Your supervisor will need to apply for you – in their application, project teams must show how their project contributes to knowledge in their chosen field, among other requirements. Applications will close at 5pm on **Monday 14 September, 2020**. Your supervisor can seek further information at www.canterbury.ac.nz/postgraduate/aho-hinatore-accelerator-scholarship

Respective College Research Committees will pre-screen and rank the applications. Then a subcommittee of the UC Komiti Rangahau Research Committee will oversee the process.

The accelerator scholarship

You will be working with a team of supervisors who are experts in the area of your research project. This will enable you to gauge one another in a safe, low-risk environment. This three-month project is an initiation into the field of research, to pique your interest and to ultimately encourage you to see the value of PhD studies.

A panel of the students' supervisors, members of the College Research Committee, and Te Amo Rangahau | Dean of Postgraduate Research will determine which students will be awarded the scholarships. Each scholar will be guaranteed a UC Aho Hīnātore | Accelerator PhD scholarship of \$28,000 per annum plus tuition fees (at the domestic rate).

A minimum of two Aho Hīnātore | Accelerator scholarships will be awarded per College, with an additional five for Māori and Pasifika students. The remainder of the scholarships will be given to the best applications from across the University.

Aho Hīnātore | Accelerator Scholarship

E: deanpgresearch@canterbury.ac.nz
www.canterbury.ac.nz/postgraduate/aho-hinatore-accelerator-scholarship

Toi Tangata: Graduate and postgraduate studies in Arts



UC's Te Rāngai Toi Tangata | College of Arts provides students with quality, research-driven teaching, and offers study options in 40+ disciplines.

Postgraduate students benefit from resources that no other Aotearoa New Zealand university can match, including: the James Logie Memorial Collection — the foremost collection of Greek and Roman antiquities in the Southern Hemisphere; Te Puna Rakahau o Macmillan Brown | Macmillan Brown Library — a unique research collection of Aotearoa and Pacific Islands materials; and a number of internationally renowned research centres such as Te Kāhui Roro Reo | New Zealand Institute of Language, Brain and Behaviour, National Centre for Research on Europe, and the Macmillan Brown Centre for Pacific Studies.

Other significant research assets include Te Kura Kōwaiwai | Ilam School of Fine Arts reference collection, the American and Canadian fiche research collection, and the UC Art Collection. Postgraduate students also have access to audio-visual equipment, film equipment, field stations, and language teaching laboratories.

Te Rāngai Toi Tangata | College of Arts is ranked among the world's top 100 in Linguistics; and top 200 for English Language and Literature, and Sociology; and in the top 250 for Psychology.

The College offers professional and community internship opportunities for postgraduate students (PACE 495), taking a lead from its hugely successful undergraduate courses and business contacts.

Featured qualifications

Master of International Relations and Diplomacy MIRAD

Graduates can obtain a master's-level qualification in the popular area of international relations and diplomacy.

The MIRAD will offer students an innovative, interdisciplinary programme of taught courses with a strong professional emphasis.

Why study a MIRAD at UC?

- Advanced academic principles are investigated through applied tasks such as case studies and field trips, and a substantial piece of independent research.
- Students benefit from on-campus research resources, for example the National Centre for Research on Europe (NCRE).
www.canterbury.ac.nz/ncre

Master of Strategic Communication MStratCom

This taught master's degree will allow you to develop your critical understanding of communication in a complex media environment.

QS World University Rankings by Subject, 2020.

Students learn skills in media writing, analytics, and research methods used in the workplace.

Why study an MStratCom at UC?

- Be prepared for the future of communication, through a focus on communication strategy, data analytics, and social media.
- Communication is about connections; contact with key industry figures and internship opportunities will enrich your CV.
- Strategic communications expertise opens up career paths in corporate communication, advocacy, social media, data, and public relations.

Master of Applied Translation and Interpreting MATI

The MATI gives students advanced language, cultural, and communication skills to work as professional interpreters and translators.

The degree is highly practical and includes the option to complete an internship organised by UC with agencies, government, or other organisations requiring translators and interpreters.

Why study an MATI at UC?

- Students are given practical training and applied language learning opportunities, with a variety of options in research, translation projects, computer-assisted translation, and internships.
- UC's translation experts have a specialisation in crisis translation and interpreting during events such as natural disasters.

Toi Tangata: Graduate and postgraduate studies in Arts



UC's Te Rāngai Toi Tangata | College of Arts provides students with quality, research-driven teaching, and offers study options in 40+ disciplines.

Postgraduate students benefit from resources that no other Aotearoa New Zealand university can match, including: the James Logie Memorial Collection — the foremost collection of Greek and Roman antiquities in the Southern Hemisphere; Te Puna Rakahau o Macmillan Brown | Macmillan Brown Library — a unique research collection of Aotearoa and Pacific Islands materials; and a number of internationally renowned research centres such as Te Kāhui Roro Reo | New Zealand Institute of Language, Brain and Behaviour, National Centre for Research on Europe, and the Macmillan Brown Centre for Pacific Studies.

Other significant research assets include Te Kura Kōwaiwai | Ilam School of Fine Arts reference collection, the American and Canadian fiche research collection, and the UC Art Collection. Postgraduate students also have access to audio-visual equipment, film equipment, field stations, and language teaching laboratories.

Te Rāngai Toi Tangata | College of Arts is ranked among the world's top 100 in Linguistics; and top 200 for English Language and Literature, and Sociology; and in the top 250 for Psychology.

The College offers professional and community internship opportunities for postgraduate students (PACE 495), taking a lead from its hugely successful undergraduate courses and business contacts.

Featured qualifications

Master of International Relations and Diplomacy MIRAD

Graduates can obtain a master's-level qualification in the popular area of international relations and diplomacy.

The MIRAD will offer students an innovative, interdisciplinary programme of taught courses with a strong professional emphasis.

Why study a MIRAD at UC?

- Advanced academic principles are investigated through applied tasks such as case studies and field trips, and a substantial piece of independent research.
- Students benefit from on-campus research resources, for example the National Centre for Research on Europe (NCRE).
www.canterbury.ac.nz/ncre

Master of Strategic Communication MStratCom

This taught master's degree will allow you to develop your critical understanding of communication in a complex media environment.

QS World University Rankings by Subject, 2020.

Students learn skills in media writing, analytics, and research methods used in the workplace.

Why study an MStratCom at UC?

- Be prepared for the future of communication, through a focus on communication strategy, data analytics, and social media.
- Communication is about connections; contact with key industry figures and internship opportunities will enrich your CV.
- Strategic communications expertise opens up career paths in corporate communication, advocacy, social media, data, and public relations.

Master of Applied Translation and Interpreting MATI

The MATI gives students advanced language, cultural, and communication skills to work as professional interpreters and translators.

The degree is highly practical and includes the option to complete an internship organised by UC with agencies, government, or other organisations requiring translators and interpreters.

Why study an MATI at UC?

- Students are given practical training and applied language learning opportunities, with a variety of options in research, translation projects, computer-assisted translation, and internships.
- UC's translation experts have a specialisation in crisis translation and interpreting during events such as natural disasters.

Subject areas

Subject	Honours	Master's (coursework)	Master's (thesis)	PhD	PG Cert/Dip	Grad Cert/Dip
Anthropology	•	•	•	•	•	•
Applied Translation and Interpreting		•			•	
Art Curatorship					•	
Art History and Theory	•	•	•	•	•	•
Child and Family Psychology			•			
Chinese	•	•	•	•	•	•
Cinema Studies						•
Classics	•	•	•	•	•	•
Cultural Studies	•	•	•	•	•	•
Digital Humanities		•			•	
Economics	•	•	•	•	•	
Education	•	•	•	•	•	•
English	•	•	•	•	•	•
European Studies	•	•	•	•	•	•
French	•	•	•	•	•	•
Geography	•	•	•	•	•	•
German	•	•	•	•	•	•
History	•	•	•	•	•	•
Human-Animal Studies				•		
Human Services	•	•	•	•	•	•
International Relations and Diplomacy		•				
Japanese	•	•	•	•	•	•
Journalism				•		•
Linguistics	•	•	•	•	•	•
Māori and Indigenous Studies/Leadership	•	•	•	•	•	•
Mathematics	•		•	•	•	•
Media and Communication/Strategic Communication	•	•	•	•	•	•
Music	•	•	•	•	•	•
Philosophy	•	•	•	•	•	•
Policy and Governance		•				
Political Science and International Relations	•	•	•	•	•	•
Psychology	•	•	•	•	•	•
Russian	•	•	•	•	•	•
Sociology	•	•	•	•	•	•
Spanish	•	•	•	•	•	•
Statistics	•		•	•	•	•
Te Reo Māori	•	•	•	•	•	•
Writing		•				

Graduate and postgraduate programmes

Qualification	Description	Requires	Start date	Duration
Bachelor of Arts with Honours <i>BA(Hons)</i>	The BA(Hons) is for high-achieving Bachelor of Arts students (or equivalent). More than 25 subjects are available and students can complete their own research as well as taught electives. For the range of subjects, see page 16 .	BA, or any bachelor's degree plus relevant graduate diploma, with grades to a specified level.	February or July*	Full-time: 1 year Part-time: up to 2 years
Graduate Diploma in Arts <i>GradDipArts</i>	Offers people who already hold a bachelor's degree an opportunity to study Arts in-depth. Designed for graduates seeking to qualify for entry to postgraduate qualifications in Arts, or to extend or upgrade their existing qualifications. For the range of subjects, see page 16 .	Must have qualified for a university degree.	February or July*	Full-time: 1 year Part-time: up to 5 years
Graduate Diploma in Journalism <i>GradDipJour</i>	This diploma gives students the knowledge, skills, and competencies needed to be effective journalists. They receive intensive training on media ethics and law, news gathering and writing, research and analysis, and multimedia skills.	BA or other qualification of an equivalent standard.	February (full-time) or July (part-time)	Full-time: 1 year Part-time: 18 months
Graduate Diploma in Strategic Communication <i>GradDipStratComm</i>	This is an ideal option for those wanting to add professional communication skills to their current studies or career, or for those looking to change direction towards corporate or creative media work.	BA or other qualification of an equivalent standard.	February or July	Full-time: 1 year Part-time: up to 5 years
Postgraduate Certificate in Arts <i>PGCertArts</i>	Further study (60 points) in one area of specialisation. More than 30 subjects are available. Can be undertaken part-time. For the range of subjects, see page 16 .	BA or an equivalent degree with grades to a specified level.	February or July*	Full-time: 6 months** Part-time: 1 year
Postgraduate Certificate in Digital Humanities <i>PGCertDigi</i>	Employers are eager for 'work-ready' graduates who can use digital tools, translate complex information, manage projects, and collaborate within interdisciplinary teams. Develop a critical understanding of the variety of digital tools and methods for research, teaching, and employment.	BA or any bachelor's degree plus relevant graduate diploma.	February or July	Full-time: 6 months** Part-time: 1 year
Postgraduate Certificate in Māori and Indigenous Leadership <i>PGCertMIL</i>	This Certificate aims to engage students in critical analysis of models of indigenous development, preparing students for further study in the area.	Bachelor's degree with grades to a specified level and relevant professional experience. A portfolio and interview is required.	February	Part-time: 1 year
Postgraduate Certificate in Te Reo Māori <i>PGCertTREO</i>	This Certificate provides a pathway for students without an undergraduate degree, but who have a high level of te reo Māori, into postgraduate Te Reo Māori studies. The Certificate leads into the Postgraduate Diploma in Te Reo Māori, and subsequently Master of Te Reo Māori.	Bachelor's degree with grades to a specified level and/or relevant professional experience. A portfolio and interview is required.	February or July*	Full-time: 6 months Part-time: 1 year
Postgraduate Diploma in Art Curatorship <i>PGDipArtCuratorship</i>	This Diploma consists of four courses including 'The Art Museum Past and Present', a special project in staging an exhibition, a gallery internship, and one course from the Art History or Art Theory honours schedule.	BA, BFA, or degree with relevant professional experience.	February or July*	Full-time: 1 year Part-time: 2 years
Postgraduate Diploma in Arts <i>PGDipArts</i>	This Diploma is ideal for graduates wishing to undertake advanced study in a humanities or social science specialisation. Students can choose between a number of course combinations, and it offers a convenient taught pathway to other postgraduate study opportunities.	BA or an equivalent degree with grades to a specified level.	February or July*	Full-time: 1 year Part-time: up to 2 years
Postgraduate Diploma in Te Reo Māori <i>PGDipTeReo</i>	An introduction to research-based knowledge, emphasising linguistic competence and critical thinking about a number of contemporary aspects of te reo Māori. Students who complete the Diploma with Merit or Distinction may transfer to the Master's.	Bachelor's degree in Te Reo Māori or equivalent, or bachelor's degree and relevant professional experience and fluency in te reo Māori.	February or July*	Full-time: 1 year Part-time: up to 4 years

* July start subject to course availability.

** Depends on availability of courses.

Graduate and postgraduate programmes (continued)

Qualification	Description	Requires	Start date	Duration
Master of Arts <i>MA</i>	A 180-point Master of Arts degree by coursework and dissertation. Prerequisites vary between programmes, but normally good grades in 300-level courses in the subject concerned are required. For the range of subjects, see page 16 .	BA.	February or July	Full-time: 18 months Part-time: up to 3 years
Master of Arts (Thesis) <i>MA(Thesis)</i>	The Master of Arts (Thesis) degree consists of a 120-point thesis in a chosen subject. Prerequisites vary between programmes, but normally good grades in 300-level courses in the subject concerned are required. For the range of subjects, see page 16 .	BA(Hons). Child and Family Psychology requires 150 points of coursework and a 120-point thesis.	February or July	Full-time: 2 years Part-time: up to 4 years
Master of Applied Translation and Interpretation <i>MATI</i>	The MATI gives students advanced language, cultural, and communication skills to work as professional interpreters and translators.	Students need a degree with at least 60 points at 300-level, with at least a B+ Grade Point Average, in either Chinese, French, German, Japanese, Russian, Spanish, or Te Reo Māori.	February	Full-time: 12–18 months
Master of European Union Studies <i>MEuro</i>	This degree is unique in Australasia and benefits from UC's National Centre for Research on Europe. It looks at the European Union in the global context, with special focus on the Asia-Pacific region and EU–NZ relations.	BA degree in a relevant subject or relevant bachelor's degree plus qualifying course.	February or July*	Full-time: 12–18 months Part-time: 2–3 years
Master of International Relations and Diplomacy <i>MIRAD</i>	The MIRAD is perfect for students interested in careers in foreign affairs or inter-state coordination. See page 15 .	Bachelor's degree with grades to a specified level (or equivalent), or bachelor's degree and relevant professional experience.	February	Full-time: 1 year Part-time: up to 3 years
Master of Linguistics <i>MLing</i>	Offers specialist courses in linguistic analysis as well as a significant research component. Graduates will gain a special awareness and appreciation of the linguistic situation in Aotearoa New Zealand and the Pacific.	An undergraduate degree in Linguistics, or a relevant undergraduate degree and completion of a qualifying course via distance learning (LING 400).	February	Full-time: 1 year Part-time: up to 2–3 years
Master of Māori and Indigenous Leadership <i>MMIL</i>	Aims to equip the next generation of leaders across a variety of sectors with the skills, knowledge, and attributes to advance the aspirations of iwi Māori and other indigenous peoples.	Bachelor's degree with grades to a specified level and relevant professional experience, or the PGCertMIL. A portfolio and interview is required.	February	Full-time: 12–18 months Part-time: up to 2–3 years
Master of Policy and Governance <i>MPAG</i>	A professional capstone qualification in policy analysis and strategic decision making, this master's will provide advanced interdisciplinary training in one year for those wishing to progress in local, regional, national, and third sector/not-for-profit roles.	A Bachelor's or equivalent degree in any subject, with at least a B grade average.	February	Full-time: 1 year Part-time: up to 3 years
Master of Strategic Communication <i>MStratCom</i>	See description on page 15 . Note: international students require an IELTS average score of 7 (or equivalent).	Bachelor's degree with at least a B grade average at 300-level, or any degree plus relevant work experience.	February or July	Full-time: 1 year Part-time: up to 3 years
Master of Te Reo Māori <i>MTeReo</i>	The MTeReo provides advanced knowledge of the language and an introduction to research, emphasising linguistic competence and critical thinking about a range of contemporary and historical aspects of te reo Māori.	Bachelor's degree in Te Reo Māori or equivalent; or bachelor's degree and relevant professional experience and high level of competency in te reo.	February or July	Full-time: 2 years Part-time: up to 4 years

* July start subject to course availability.

** December and January starts are not recommended.

Qualification	Description	Requires	Start date	Duration
Master of Writing <i>MWRIT</i>	The MWRIT offers a thorough grounding in the skills common to all genres of writing — creative, professional, technical, and academic — while also allowing you to deepen your knowledge and ability in one or more genre.	Bachelor's degree with at least a B grade average at 300-level, or any degree plus relevant work experience	February or July*	Full-time: 12–18 months Part-time: 2–3 years
Doctor of Philosophy <i>PhD</i>	For more information on PhDs, see page 10 . For the list of available subjects, see page 16 .	Bachelor's degree with first or second-class honours division 1, or master's degree with distinction, or merit, or equivalent.	Beginning of any month**	Full-time: 3–4 years Part-time: 4–5 years

Research

Research is integral to the work of Te Rāngai Toi Tangata | College of Arts and academics are engaged in fundamental and applied research across a broad range of subjects at regional, national, and international levels. The College hosts a number of successful research centres:

Te Kāhui Roro Reo | New Zealand Institute of Language, Brain and Behaviour (NZILBB)

Dedicated to the study of human language, this multidisciplinary centre covers linguistics, speech production and perception, language acquisition and disorders, memory, brain imaging, and bilingual education.

www.canterbury.ac.nz/nzilbb

UC CEISMIC Canterbury Earthquake Digital Archive

Following the earthquakes of 2010/11 the UC CEISMIC Digital Archive has been collecting and preserving the memories and experiences of the people of the Waitaha Canterbury region.

www.ceismic.org.nz

National Centre for Research on Europe

The NCRE is Aotearoa New Zealand's only interdisciplinary research body devoted to examining the impact of the European Union in our region, covering political and security issues, economic and trade relations, culture and migration, climate change and energy. These are just some of the current research themes being investigated.

www.canterbury.ac.nz/ncre

Other centres hosted by Te Rāngai Toi Tangata College of Arts are:

- Social Science Research Centre
- Confucius Institute at the University of Canterbury
- Macmillan Brown Centre for Pacific Studies
- Te Puna Puoru | National Centre for Research in Music Education and Sound Arts (MERC)
- New Zealand Centre for Human-Animal Studies
- New Zealand South Asia Centre
- Kā Waimaero | Ngāi Tahu Research Centre.

See **pages 6–7** or www.canterbury.ac.nz/research/institutes-and-centres

Career opportunities

In today's rapidly changing work environment, graduates need skills that are applicable to many situations and such skills are highly sought after by employers.

The ability to think critically, write, analyse, research, problem solve, innovate, and communicate are vital skills taught as part of an Arts degree. Graduates receive a respected, internationally recognised qualification that lays the foundation for a successful career, be it in media, government, international relations, arts, culture, heritage, archives, politics, public policy, research, communications, conservation, education, community development, publishing, design, business, marketing, or academia.

By giving you the opportunity to obtain advanced knowledge about specialist topics and/or carry out original research, Te Rāngai Toi Tangata | College of Arts postgraduate programmes aim to foster intellectual independence, critical thinking, and excellence in every field.

www.canterbury.ac.nz/careers



‘UC offers pretty diverse options and I think UC does give you that option to do something more apart from just studies, so come to UC not just to study but to excel in all fields.’

Suvo

Studying towards a PhD in Media and Communication

Te Rāngai Toi Tangata | College of Arts

T: +64 3 369 3377

E: artsdegreeadvice@canterbury.ac.nz

www.canterbury.ac.nz/arts

Umanga: Graduate and postgraduate studies in Business



Te Kura Umanga | UC Business School takes pride in its postgraduate programmes. Our innovative, research-based qualifications prepare graduates for a successful professional career.

The School's research in Marketing and Tourism is ranked first among Aotearoa New Zealand's universities, and research in Management and Economics is ranked third.* Its Accounting and Finance programmes are also ranked in the top 150 in the world.** While more recent research areas include organisational resilience, sustainability, and NGO leadership, the School retains its core research strengths in entrepreneurship, financial risk management, information systems, management, marketing, social/environmental accounting, taxation and tourism.

The School offers taught master's programmes that equip graduates with the applied skills,

* The Tertiary Education Commission Performance-Based Research Fund Assessment, 2018.

** QS World University Rankings by Subject, 2020.

knowledge, and business acumen needed to transition into high-level business roles. Coursework-based degrees in applied economics and finance, business management, professional accounting, and business information systems provide an intensive learning experience covering the essential operational functions of any organisation.

Postgraduate benefits

As a postgraduate student, you will benefit from access to resources such as UC's extensive library of academic journals. You will also interact closely with supervisors, lecturers, and fellow students. For research postgraduates, there are opportunities to become involved in teaching.

Scholarships

Students undertaking a MCom or PhD in Accounting, Information Systems, Economics, Finance, Management, Marketing, or Taxation can apply for either a UC Master's Scholarship or UC Doctoral Scholarship, which are awarded annually by the University.

Industry and partnerships

Besides access to the School's expertise in a wide range of areas, the School's links with industry also enable you to attend guest lectures and

presentations by business leaders, innovators, and entrepreneurs. Taught master's programmes can include a research project or internship with a business or nonprofit organisation depending on availability and your grade. Usually, the University hosts up to a dozen visiting academics from top international universities as part of our unique Erskine programme.

Leading change

UC is committed to international benchmarking of its postgraduate business programmes. Our MBA programme is fully accredited by the Association of MBAs (AMBA) and the UC Business School is accredited by the Association to Advance Collegiate Schools of Business (AACSB) and the EFMD Quality Improvement System (EQUIS). Te Kura Umanga | UC Business School is in the 1% of Business Schools worldwide that holds the 'Triple-Crown' of accreditations (AACSB, EQUIS, and AMBA).

Our world-class business education encourages students to engage in research and projects that are impactful and affect organisational change. UC is renowned for producing graduates who show leadership and can create viable business solutions. You'll find our graduates working in organisations that contribute to the economy and wellbeing of their communities.



Innovation and entrepreneurship

In today's business environment, innovation and entrepreneurship are key strategic drivers for organisational growth and sustainability. Postgraduate study at UC encourages you to analyse current viewpoints while considering future business applications in new and progressive ways.

Gaining practical business experience is made possible through Te Pokapū Rakahinonga | UC Centre for Entrepreneurship (UCE). UCE aims to develop and support young entrepreneurs through research, teaching, and community engagement. It hosts student-run societies such as entré and 180 Degrees Consulting, where you can network and learn valuable skills, develop sustainable solutions for charities and nonprofits under the guidance of industry mentors, and more. The UC Incubator and Summer Start-up programmes can help you to start your own business venture with support, resources, and events such as business bootcamps.

www.canterbury.ac.nz/business/uce

Research

Te Kura Umanga | UC Business School academics conduct, publish, present, and collaborate on research with global relevance and application.

Research by Te Kura Umanga | UC Business School not only informs teaching, it is often a part of student learning. Our academics are highly respected in their field, attracting research students from around the world. Some examples include major public policy issues, such as social and environmental accounting and reporting, sustainable business development, sustainable and resilient tourism, sex discrimination and gender-mainstreaming policies, tax compliance, and financial risk management.

Postgraduate research students complete a thesis or dissertation that involves literature reviews, data collection and analysis, and expanding the current concepts and knowledge in their chosen area.

Tourism Research

Tourism research is a distinct area of expertise. Te Kura Umanga | UC Business School tourism research is informed by collaborative projects with local, national, and international government bodies and nonprofit organisations. In the last four years, tourism researchers

have worked on internal projects and grant applications with ChristchurchNZ, the local economic development agency for the Waitaha Canterbury Region. At the national level, researchers within the group are involved in projects with Tourism Industry Aotearoa (TIA), the only independent association that represents all sectors of Aotearoa New Zealand's large and diverse tourism industry. For instance, UC researchers and students were involved in mapping tourism data sources within Aotearoa on behalf of TIA. Tourism researchers were also involved in workshops run by MBIE on the tourism data domain for Aotearoa.

Career opportunities

Postgraduate business study can lead to an academic career, provide professional development or serve as a transition to a new career. UC Business graduates are prepared for professional roles in every kind of organisation where people need to be innovative, solve challenging problems, and make a difference.

www.canterbury.ac.nz/careers

Featured qualifications

Master of Business Administration MBA

A UC MBA is a key professional milestone for many aspiring and accomplished business leaders. By focusing on collaboration with industry, the UC MBA produces well-rounded leaders, capable of creating and growing world-class organisations through innovation, digital transformation, data-led strategy making, and responsible societal engagement.

Why study an MBA at UC?

Gaining a UC MBA will provide significant long-term benefits. Through the comprehensive programme you will:

- develop leadership capabilities to motivate teams and drive performance
- enhance strategic perspectives by working on real industry challenges
- gain a more holistic outlook of how local businesses thrive in global markets
- expand your professional networks.

Master of Commerce MCom

The MCom consists of coursework and a thesis. An MCom will allow you to learn more about your chosen subject area, critically view the world, and carry out an independent piece of research.

Why study an MCom at UC?

- It can be completed in one calendar year.
- An MCom can help you differentiate yourself in the job market for professional roles and business consulting.
- If you are following the Chartered Accountants Australia and New Zealand programme, study in the MCom (or BCom (Hons)) Accounting programme counts as one year of professional experience.

Te Kura Umanga | UC Business School

T: +64 3 369 3888

E: postgradbusiness@canterbury.ac.nz

www.canterbury.ac.nz/business



'If you are looking for a focused, practical education to help you run your teams better and help your organisation be successful, this is the place to be!'

Tamson

Studying towards a Postgraduate Diploma in Business Administration
Product Strategy Manager, Seequent Ltd

Subject areas

Subject	Honours	Master's	PhD	PG Cert/Dip	Grad Cert/Dip
Accounting	•	•	•		•
Applied Finance and Economics		•			
Business Administration		•		•	
Business		•		•	
Business Information Systems		•		•	
Economics	•	•	•		•
Finance	•	•	•		•
Financial Management		•			
Information Systems	•	•	•		•
Information Systems and Technology				•	
Management	•	•	•		•
Marketing	•	•	•		•
Professional Accounting		•			
Strategic Leadership				•	
Sustainable Supply Chain Management		•			
Taxation		•	•		
Taxation and Accounting	•				

Graduate and postgraduate programmes

Qualification	Description	Requires	Start date	Duration
Bachelor of Commerce with Honours <i>BCom(Hons)</i>	The honours programme allows you to further your expertise in your chosen major and explore specialist topics that can lead to entry to master's programmes by thesis.	A relevant bachelor's degree. Students must also satisfy the course prerequisites for the subject.	February or July	Full-time: 1 year Part-time: up to 4 years
Graduate Diploma in Commerce <i>GradDipCom</i>	The GradDipCom allows students to complete advanced commerce courses and enables you to transition into research-based postgraduate study.	Any bachelor's degree with a B+ average in advanced courses.	February or July*	Full-time: 1 year Part-time: up to 4 years
Postgraduate Certificate in Business <i>PGCertBus</i>	This Certificate equips you with general knowledge and skills that can be applied to graduate positions across a wide range of industries. It is a pathway qualification to the PGDipBus, which can then lead on to the MBus in Business Management, MBus in Financial Management, and MPA.	Any bachelor's degree. Good grades in the 300-level courses or extensive relevant experience is also required.	February or August	Full-time: 6 months Part-time: up to 2 years
Postgraduate Certificate in Information Systems and Technology <i>PGCertIST</i>	The PGCertIST allows you to further explore Information Systems to deepen your knowledge in the area.	A bachelor's degree in Information Systems or related field with a B average or above.	February or July	Full-time: 6 months Part-time: up to 2 years
Postgraduate Certificate in Strategic Leadership <i>PGCertStratLdrship</i>	This Certificate is the ideal solution for students who do not currently have time to complete the full MBA programme. It includes six courses which can be taken in any order and are taught in modular format over two Fridays and Saturdays.	Interview required, and at least 5 years' management or leadership experience.	Various	A maximum of 3 years
Postgraduate Diploma in Business <i>PGDipBus</i>	The PGDipBus offers a pathway to the MBus and MPA programmes. The Diploma includes eight courses and can be completed in less than a year.	Any bachelor's degree with a B average or above in the 300-level or equivalent courses.	February or August	Full-time: 1 year Part-time: up to 4 years

* July start subject to course availability.

** January if enrolling in FIEC 601.

† Applicants who begin in July will normally need to spend 3 semesters (18 months) to complete the MCom. This is because there are mandatory courses which begin in February only. If you intend to start in July, please be aware that this will incur an additional 6 months of other expenses.

Graduate and postgraduate programmes (continued)

Qualification	Description	Requires	Start date	Duration
Postgraduate Diploma in Business Administration <i>PGDipBA</i>	The PGDipBA offers an entry pathway to the MBA programme. The Diploma includes 12 core courses from the MBA programme. Transfer to the MBA programme is available for those students who complete the PGDipBA with a B average or higher.	At least 5 years' management or leadership experience.	February, May, or September	Full-time: 1 year Part-time: up to 4 years
Postgraduate Diploma in Business Information Systems <i>PGDipBIS</i>	This Diploma provides the skills that allow graduates to gain employment in information systems-related industries.	Any bachelor's degree with a B average or above in the 300-level or equivalent courses.	February or August	Full-time: 1 year Part-time: up to 4 years
Postgraduate Diploma in Information Systems and Technology <i>PGDipIST</i>	The PGDipIST allows you to further explore Information Systems either to deepen your knowledge in the area or to prepare yourself for further research in the area.	A bachelor's degree in Information Systems or related field with a B average or above.	February or July	Full-time: 1 year Part-time: up to 4 years
Master of Applied Finance and Economics <i>MAFE</i>	The MAFE is a master's degree in both Finance and Economics. Students take two semesters of advanced coursework in both subjects, followed by a practical applications course.	Any bachelor's degree with good grades. Must have intermediate economics and finance and basic statistics and calculus.	January** or February (based on entry level)	Full-time: 12–14 months Part-time: up to 4 years
Master of Business Administration <i>MBA</i>	The MBA offers a chance to upskill, make a career change, and gain relevant business connections and experiences. The course structure incorporates compulsory and elective courses as well as a consulting project. There are also opportunities to attend seminars, guest lectures, and networking events. See page 21 .	Any bachelor's degree, or the Postgraduate Diploma in Business Administration, must have been completed with good grades, and at least five years' work experience is required.	February, May, or September	Full-time: 16 months Part-time: up to 5 years
Master of Business <i>MBus</i>	The MBus explores business basics as well as a specialist major focus in Financial Management, Management, Marketing, or Sustainable Supply Chain Management. It also includes project opportunities through our industry contacts.	Any bachelor's degree with a B average or above in the 300-level or equivalent courses.	January or August	Full-time: 15 months Part-time: up to 4 years
Master of Business Information Systems <i>MBIS</i>	The MBIS enables you to take advantage of increasing industry demand for 'tech-savvy' business graduates. Combining business studies with information systems, the MBIS is designed to equip you with the specialist knowledge and skills to manage technology-driven innovation in business.	Any bachelor's degree with a B average or above in the 300-level or equivalent courses.	February or August	Full-time: 15 months Part-time: up to 4 years
Master of Commerce <i>MCom</i>	See description on page 21 .	A bachelor's degree in the same subject with good grades or a relevant graduate diploma with good grades.	February or July†	Full-time: 12–18 months Part-time: 18–36 months
Master of Product Innovation <i>MProdInnovation</i>	Open to students of any study background, the Master of Product Innovation is a perfect opportunity to access specialised facilities and industry experts at university while beginning to develop your own product or business ideas.	BProdDesign with GPA 5 or above at 300-level, conjoint BProdDesign and BCom or BProdDesign and Science with GPA 5 or above at 300-level, or other appropriate design degree with GPA 5 or above at 300-level.	February or July	Full-time: 18 months Part-time: 36 months
Master of Professional Accounting <i>MPA</i>	The MPA is a conversion taught master's that will give graduates the skills, knowledge, and competencies to be highly effective accountants. Leads to provisional membership of professional bodies such as Chartered Accountants Australia and New Zealand.	Any bachelor's degree with a B average or above in the 300-level or equivalent courses.	February or August	Full-time: 18–22 months Part-time: up to 4 years
Doctor of Philosophy <i>PhD</i>	For more details see page 10 .	Bachelor's degree with first-class or second-class honours division 1, or master's degree with first-class or second-class honours, or equivalent.	Beginning of any month	Full-time: 3–4 years Part-time: 4.5–6 years

Ako: Graduate and postgraduate studies in Education



UC's Te Rāngai Ako me te Hauora | College of Education, Health and Human Development builds on a 135-year tradition and is ranked among the world's top 200 universities for Education.*

Te Rāngai Ako me te Hauora | College of Education, Health and Human Development is based in the Rehua building in the heart of the Ilam campus.

The College is committed to research excellence in teacher education, educational studies and leadership, sports and physical education, and health sciences.

Professional development and specialisation

Many teachers wish to specialise in an area of teaching they are passionate about, or that they may wish to strengthen their practice or further develop a range of skills. This might be inclusive education; for others it could be languages or leadership. See **pages 26–27**.

UC Education Plus

Mātauranga Nui Ake | UC Education Plus provides tailored professional learning and development (PD) to teachers and leaders in schools, communities of learning, and early learning centres in Te Waipounamu South Island.

Much of the training is provided at no cost through a school's Te Tāhuhu o te Mātauranga Ministry of Education contract.

www.canterbury.ac.nz/edplus

Graduate teaching options

Students wishing to become registered teachers and who have already completed a recognised degree can apply for a graduate diploma (early childhood, primary, or secondary), postgraduate diploma or master's degree (in either primary or secondary teacher education).

Supportive study environment

The College offers an encouraging and collegial environment with varied delivery options, such as on-campus classes or distance options, and full or part-time study.

The College's teaching staff are education specialists who have close links with local schools and whose teaching draws on practical experience and the latest research.

Featured qualifications

Master of Teaching and Learning MTchgLn

The MTchgLn combines research-informed knowledge, evidential and critical inquiry, practice-oriented assessment, and practical experiences in schools as preparation for teaching. You can choose an endorsement in Primary or Secondary Education. Students who successfully complete the programme may be eligible for teacher registration.

Why study an MTchgLn at UC?

- Study in a digitally enriched environment that reflects modern learning pedagogies.
- Focus on classroom practices that support priority and diverse learners so you will be a force for innovation in schools and enable learner success.
- Pre-service teachers will have the opportunity to work within two different school communities, to ensure a variety of experiences across school settings.
- Aligned with Matatū Aotearoa | Teaching Council of Aotearoa New Zealand Code and Standards.

* QS World University Rankings by Subject, 2020.

Master of Education MEd

The MEd is a 180-point pathway for current teachers, educational professionals, counsellors, researchers, and leaders to gain a master's level qualification. You will examine practice and critical issues in education, in an area of specialisation.

Why study an MEd at UC?

- You can complete a coursework-only degree or a mix of courses and an original thesis.
- It is an ideal qualification for those who have already undertaken some postgraduate study. You will develop your leadership skills or undertake research in your field of interest.
- Offers a range of endorsements including Literacy, Leadership, e-Learning/Digital Technologies, or Inclusive and Special Education.

Note: This qualification is not a pathway to teacher registration.

Doctor of Education EdD

The Doctor of Education is a specialised doctorate designed for professionals in education, health sciences, and related fields.

Built on a cohort model of inquiry, the Doctor of Education provides a structured, supportive, rigorous approach to doctoral study.

Why study an EdD at UC?

- You will adopt an investigative, reflective, dialogical stance, and be able to link theory and research to questions of professional practice.
- Be part of a cohort where you connect with other doctoral students and attend regular workshops throughout the year.
- Have access to a range of supportive academics from a variety of specialisations.

Research

The College attracts funding that enables advances to be made in educational knowledge and the evaluation of education practice, while also giving postgraduate students opportunities to carry out research in topical aspects.

The College has links with institutions internationally and offers services to enhance the professional development of educators both in Aotearoa New Zealand and in other countries, including customised in-service professional

development courses for teachers and teacher educators, custom-designed College courses, educational tours and consultancies, and staff and student exchanges.

Key areas of research include those represented by the College's research hubs:

- E Tipu e Rea | A Better Start
- Early Years Enquiry Research Hub
- Educational Theory, Policy and Practice Research Hub
- e-Learning Research Lab
- Tuia Mai: Interdisciplinary Perspectives in Inclusion and Diversity (IPID) Group
- Language and Literacy Research Lab
- Sport and Exercise Research Lab (SERL)
- Te Rū Rangahau | Māori Research Laboratory
- Teacher Learning and Innovations in Practice Research Hub
- Te Pokapū Pāhekoheko Hapori UC Community Engagement Hub
- UC Child Wellbeing Research Institute

Career opportunities

Teaching offers a creative, stimulating, and rewarding career that provides the opportunity to influence and shape many lives. Teaching also provides entry into careers beyond the classroom, with teaching experience being an excellent background for a wide range of jobs including careers in the public sector, and business and industry training.

Postgraduate study in Education can contribute to your employability. It enables you to extend your knowledge and skills, indicates your motivation and ability to persevere at a high level academically, and can make you more competitive in the job market.

Graduates have varied career opportunities available to them including work in government, commerce, social service agencies, health and rehabilitation, museums, counselling, and voluntary organisations.

www.canterbury.ac.nz/careers

Te Rāngai Ako me te Hauora | College of Education, Health and Human Development
T: +64 3 369 3333
E: educationadvice@canterbury.ac.nz
www.canterbury.ac.nz/education



‘I loved the support I received, whether it be from scholarships, ELDP, Māori Development Team and the lecturers. They all made my journey at UC seamless.’

Toya

Kāi Tahu, Te Atiawa
Master of Education with an endorsement in Curriculum and Pedagogy
Teacher, Lincoln Primary School

Qualifications leading to Teacher Registration

Qualification	Description	Requires	Start date	Duration
Graduate Diploma in Teaching and Learning (Early Childhood) <i>GradDipTchLn(EC)</i>	For graduates interested in training to become an early childhood teacher. Special requirements apply for those for whom English is a second language. www.canterbury.ac.nz/education	Bachelor's degree. Acceptance into the programme is subject to a selection process. Applications are open anytime (closes 4 weeks before start date).	February	Full-time: 36 months Part-time options available, up to 3 years
Graduate Diploma in Teaching and Learning (endorsed in Primary or Secondary) <i>GradDipTchgLn</i>	Primary: For graduates interested in training to become a primary school teacher. Consists of 150 points of coursework and includes 80 days of professional practice in schools. Special requirements apply for those for whom English is a second language.	Bachelor's degree. Acceptance into the programme is subject to a selection process.	February	Full-time: 1 year Part-time options available
	Secondary: For graduates interested in training to become a secondary school teacher. Special requirements apply for those for whom English is a second language. www.canterbury.ac.nz/education	Bachelor's degree with study from Levels 5 to 7 (ie, 100 to 300-level papers) in a subject area relevant to the secondary school curriculum. Acceptance into the programme is subject to a selection process. Applications are open anytime (closes 4 weeks before start date).		
Postgraduate Diploma in Teaching and Learning (endorsed in Primary or Secondary) <i>PGDipTchgLn</i>	Primary: For graduates interested in training to become a primary school teacher. Consists of 150 points of coursework and includes 80 days of professional practice in schools. Special requirements apply for those whom English is a second language.	Bachelor's degree. Acceptance into the programme is subject to a selection process.	February	Full-time: 1 year
	Secondary: For graduates interested in training to become a secondary school teacher. Special requirements apply for those for whom English is a second language. www.canterbury.ac.nz/education	Bachelor's degree with a B average at 300-level. Plus study from Levels 5 to 7 (ie, 100 to 300-level papers) in a subject area relevant to the secondary school curriculum. Acceptance into the programme is subject to a selection process. Applications are open anytime (closes 4 weeks before start date).	February	Full-time: 1 year
Master of Teaching and Learning <i>MTchgLn</i>	See page 24 for a description. This Master's degree can be endorsed in Primary or Secondary. For the Secondary endorsement, students must have studied to 300 or 400-level in a secondary curriculum subject area.	A bachelor's degree or higher degree in a disciplinary field appropriate to teaching and learning (with a B grade average at 300-level). Applications are open anytime (closes 4 weeks before start date).	January	Full-time: 1 year

Professional development and advanced study for qualified teachers

Qualification	Description	Requires	Start date	Duration
Graduate Diploma in Māori Language and Pedagogies: Aumiri Pounamu <i>GradDipMLP</i>	Graduates with the GradDipMLP will gain an enhanced level of competence and confidence to teach te reo Māori and embed tikanga Māori including Māori, pedagogies into their teaching practice. You will gain deep, specialised knowledge of teaching in Māori medium settings and learn about curriculum and assessment specific to these settings. Tikanga-ā-iwi including mana whenua knowledge will be gained through this programme.	A New Zealand teacher education degree or recognised, three-year degree in early childhood, primary, or secondary teaching in New Zealand. An interview with a Selection Committee and other selection requirements including te reo Māori language competency. Approval by the Dean of Education and Health Sciences.	January	Part-time: up to 4 years
Postgraduate Certificate in Education <i>PGCertEd</i>	The PGCertEd is designed to provide those with an education or counselling background the opportunity to improve their professional practice and assess significant issues in education. Students may proceed to the PGDipEd or the MEd.	Degree with at least 60 points in Education; or an appropriate degree and have either completed a minimum 1-year teacher training course or have experience as a teacher, educator, or counsellor.	February, July, or November	Full-time: 6–12 months Part-time: up to 2 years
Postgraduate Certificate in Tertiary Teaching <i>PGCertTertTchg</i>	Pursue a range of teaching and learning themes, to build on specific knowledge and to consider academic practices from various disciplines.	Be practising in tertiary teaching and have an appropriate bachelor's degree, or equivalent qualifications and experience in your field of teaching.	February or July	Part-time: 1–4 years
Postgraduate Diploma in Education <i>PGDipEd</i> — can be endorsed in the following:	The PGDipEd is designed to improve professional practice and examine critically significant issues in education. The PGDipEd can be completed unendorsed or endorsed in a specific area of interest (see below). Students with a B+ average or better may proceed to the MEd.	Appropriate degree with courses in Education, Psychology, or related discipline; or any bachelor's degree and have either completed a minimum 1-year teacher training course or have experience as a teacher, educator, or counsellor (a B grade average in 300-level courses is normally expected).	February or July*	Full-time: 1 year Part-time: up to 4 years
<i>e-Learning and Digital Technologies in Education</i>	Improve your professional practice with ICT and investigate significant issues in this area.			
<i>Hōaka Pounamu: Te Reo Māori Bilingual and Immersion Teaching</i>	Extend and develop your use of te reo Māori in the classroom.	A basic knowledge of te reo Māori is required for Hōaka Pounamu.		
<i>Inclusive and Special Education</i>	Improve your professional knowledge, practice, and ability to address significant issues in the field.			
<i>Leadership</i>	Gain effective leadership and management competencies to enhance and build your career.	At least 5 years' professional experience, as well as employment in a position of leadership responsibility, is required for the Leadership endorsement.		
<i>Literacy</i>	Critically examines literacy underachievement through a combination of theory and practice.		February only for Literacy, and Teaching and Learning Languages	
<i>Teaching and Learning Languages</i>	Gain an understanding and skills to teach languages and cater for students' linguistic needs.			

* July start subject to course availability.

Professional development and advanced study for qualified teachers (continued)

Qualification	Description	Requires	Start date	Duration
Master of Education <i>MEd</i>	A 180-point or 120-point thesis option is also available for those with a PGDipEd or BTchLn(Hons) degree with a B+ grade average.	Appropriate degree with courses in Education, Psychology; or any degree, and a minimum 1-year teacher training course or have experience as a teacher, educator, or counsellor (a B grade average at 300-level required).	February, July, and November**	Full-time: 18 months Part-time: up to 5 years
Master of Specialist Teaching <i>MSpecTchg</i>	Aimed at practitioners who want to provide professional leadership in their area of expertise. A non-thesis pathway, the degree can be awarded unendorsed or endorsed in Complex Educational Needs, Deaf and Hard of Hearing, Early Intervention, and Learning and Behaviour.	NZ Teacher Education degree, or recognised NZ 3-year teaching diploma and current NZ teacher registration, and at least 2 years' experience as a teacher or educator in a recognised setting. The usual pathway to the MSpecTchg is through a completed PGDipSpecTchg.	February or July	Full-time: 1 year to 18 months Part-time: up to 6 years
Doctor of Education <i>EdD</i>	Aimed at Education professionals and other related fields. Doctoral students will synthesise theory and address questions of professional practice while further developing their leadership capacities. See page 25 .	A bachelor's degree with first or second class honours, or a master's degree with distinction or merit, and a minimum of 5 years' experience in a relevant professional role.	Beginning of any month	A mixture of part and full-time, or part-time only: up to 6 years
Doctor of Philosophy <i>PhD</i>	For more details about PhD study, see page 10 .	Bachelor's degree with first or second-class division 1 honours, or master's degree with first-class or second-class honours, or equivalent.	Beginning of any month	Full-time: 3–4 years Part-time: 4.5–6 years

** July and November starts subject to availability.

Language educator programmes

Qualification	Description	Requires	Start date	Duration
Postgraduate Certificate in Teaching English to Speakers of Other Languages <i>PGCertTESOL</i>	Ideal fast-track qualification for those who may have come to the career of English language education through an indirect route and wish to undertake professional development or for graduates interested in entering the TESOL profession.	Appropriate bachelor's degree with a B grade average or better.	July or November	Part-time: 12–18 months
Master of Teaching English to Speakers of Other Languages <i>MTESOL</i>	A one-year professional qualification aimed at producing skilful English language educators for a wide variety of educational settings in the 21st century, from early childhood through to tertiary level. With a future focus, this programme will give students the skills, knowledge, and capabilities to be adaptable in the face of future English language developments, as well as technological and pedagogical advances.	Appropriate bachelor's degree (a B grade in 300-level courses is normally expected). Relevant work experience will also be considered.	February or November	Full-time: 1 year Part-time: up to 4 years

Education, language education, and teaching subject areas

Subject	Honours	Master's	PhD/EdD	PG Cert/Dip	Grad Cert/Dip
Aumiri Pounamu					•
Early Childhood Education					•
Education	•	•	•	•	•
e-Learning and Digital Technologies in Education		•		•	
Hōaka Pounamu: Te Reo Māori Bilingual and Immersion Teaching		•		•	
Inclusive and Special Education		•		•	
Leadership		•		•	
Literacy		•		•	
Primary Education		•		•	•
Secondary Education		•		•	•
Teaching and Learning Languages		•		•	
Teaching English to Speakers of Other Languages		•		•	
Tertiary Teaching				•	



Pūkaha: Postgraduate studies in Engineering



Aotearoa New Zealand's premier Te Rāngai Pūkaha | College of Engineering provides internationally recognised qualifications and is ranked 9th in the world for Civil Engineering.*

Founded in 1887 as the first School of Engineering in Aotearoa New Zealand, UC's Te Rāngai Pūkaha | College of Engineering is internationally recognised for its teaching and research excellence, and opened brand new facilities in 2017.

As well as its elite ranking in Civil and Structural Engineering, Engineering and Technology is also ranked second in Aotearoa New Zealand for research.**

Engineering professional development courses are run in block-mode or flexible delivery; an ideal format for the working professional, including those who live outside of Ōtautahi Christchurch. See [page 31](#).

The College offers both coursework and research-based qualifications, including postgraduate certificates, master's, and doctoral degrees.

Postgraduate resources

Considerable resources are available to postgraduate students. These include well equipped workshops, laboratories and computer facilities, and a specialist Te Puna Pūkaha me te Pūtaiao | Engineering and Science Library (EPS), with access to many print and online resources and subject specialists who can help with finding information and referencing.

University and industry scholarships are also available for postgraduate students.

Academic and industry expertise

Postgraduate students benefit from the College's close interaction with industry, helping attract financial support for research as well as opportunities to establish professional networks.

A number of research centres are housed in Te Rāngai Pūkaha | College of Engineering and there are strong relationships with other research centres at UC and in Aotearoa.

Research projects can involve national research institutes and organisations in industry.

Usually, the College hosts up to a dozen visiting academics from top international universities as part of the University's unique Erskine programme, providing opportunities for our students and staff to interact with world leaders in their respective fields.

Research

Te Rāngai Pūkaha | College of Engineering's overarching aim is to contribute to and benefit the community in all areas of our research, from safe buildings to medical technology, and provide excellent graduates who will help fulfil this mission.

Creativity and innovation are encouraged and research collaborations are often interdisciplinary, with projects spanning departments, research centres, and other colleges within UC. Strong links with related disciplines including Forestry, Computer Science, Mathematics, Statistics, Product Design, Physics, Astronomy, Chemistry, and Geology enable highly specialised interdisciplinary research at postgraduate level.

Major research themes in the College of Engineering include sustainability, energy, security and safety, environment, society and community, innovative design for economic growth, and pure mathematics.

Research centres include the Electric Power Engineering Centre (EPECentre), Tangata Hangarau, Hangarau Tangata | Human Interface Technology Laboratory (HIT Lab NZ), Wireless Research Centre (WRC), Spatial Engineering Research Centre (SERC), and the UC Quake Centre.

Examples of research areas

Chemical and Process Engineering

Energy and fuels, battery technology, catalysis, biochemical processes, food process engineering, environmental research, electrochemical engineering, industrial measurement technology, computational techniques in chemical engineering, and wood technology.

* Academic Ranking of World Universities, 2020.

** Tertiary Education Commission Performance-Based Research Fund (PBRF), 2018.

Civil and Natural Resources Engineering

Structural, geotechnical, transportation, environmental, water and fluids, hydrological and ecological, renewable energy, humanitarian engineering, architectural engineering, construction management, fire, structural fire, earthquake engineering, smart infrastructures, and digital civil engineering.

Electrical and Computer Engineering

Acoustics, communications, computational imaging, nanotechnology, networking, power electronics, and power systems.

Forest Engineering

Operational efficiency, forestry engineering, equipment development and testing, worker safety, road and stream crossing design, and environmental standards.

Human Interface Technology

Virtual Reality, Augmented Reality, applied game design, and human-robot interaction.

Mechanical Engineering

Acoustics, aerospace, automation, automotive, autonomous systems, biomedical, composites, computational mechanics, computer-aided design, control and instrumentation, design and ergonomics, earthquake engineering, energy systems, Industry 4.0, manufacturing, materials, mechanics, microtechnology, robotics, structural analysis, and thermofluid mechanics.

Software Engineering

Cyber security, machine learning, computer vision, artificial intelligence, computer graphics, human-computer interaction, networking, autonomous robots/drones, intelligent tutoring and health systems, software engineering processes and practices, software quality, spacial data science, and computer science education.

UC Engineering courses for professional development

Today's engineering environment requires professional engineers to be highly skilled, up-to-date, and technically competent in their chosen field. Our professional development courses will help working engineers understand and apply new technologies, stay ahead of industry trends, and advance their career.

Teaching staff

Our lecturers are a mixture of UC academics and industry experts, giving our students access to both research knowledge and professional experience.

Delivery format

These courses are run in block-mode or flexible format, enabling participants to enrol in individual courses that fit around work commitments. They are also ideal for those living outside of Ōtautahi Christchurch.

Block courses are generally run over a three-day period of lectures during a week, with a six-week break in between for independent study and readings, followed by another three-day period of lectures. Block courses and flexible study options may be offered in Architectural Engineering, Civil Engineering, Construction Management, Earthquake Engineering, Fire Engineering, and Transportation Engineering.

www.canterbury.ac.nz/engineering/professional-development

What do I get at the end of it?

Several of these block courses can be taken as a one-off course, without committing to a qualification, as part of a Certificate of Proficiency. Alternatively, for those with the relevant academic background and/or work experience, courses may be credited to the Postgraduate Certificate in Engineering, Master of Engineering Studies, Master of Civil Engineering, or Master of Architectural Engineering.

Eligibility

To be eligible to enrol in one of these courses, you should hold a four-year Bachelor of Engineering with Honours degree, or another relevant degree or suitable work experience. Some courses will have required prerequisites. It is best to discuss your background with the Postgraduate Director of Studies before enrolment.

www.canterbury.ac.nz/engineering/professional-development

Career opportunities

Over the past decade, there has been an increase in the number of top-level industrial positions filled by engineers with postgraduate qualifications.

These qualifications are now viewed as more than a way of specialising for a future in research or academia, and allow you to gain skills which will open new, high-level career options.

Postgraduate degrees in Engineering prepare students for careers in business leadership positions, where extended analytical skills are increasingly valued.

www.canterbury.ac.nz/careers



‘I’m using skill sets from both my undergraduate degree and Master of Engineering in Management (MEM) in my work. The MEM has been especially helpful because it is important to understand from a commercial perspective the motivation behind business decisions, and how this drives the engineering design.’

Cameron

Ngā Puhi

Master of Engineering in Management
Commercial Engineering Manager, WEL Networks

Te Rāngai Pūkaha | College of Engineering

T: +64 3 369 4271 or +64 3 369 4272

E: engdegreeadvice@canterbury.ac.nz

www.canterbury.ac.nz/engineering

Postgraduate programmes

Qualification	Description	Requires	Start date	Duration
Postgraduate Certificate in Architectural Engineering <i>PGCertArchEng</i>	The PGCertArchEng provides at-work building design professionals with practice-focused education. The Certificate will use a holistic approach to integrated collaborative building design, supporting the drive to improve sustainability and affordability of buildings.	BE(Hons) or an appropriate 4-year bachelor's degree in a subject related to building design.	February or July	Full-time: 6 months Part-time: up to 2 years
Postgraduate Certificate in Civil Engineering <i>PGCertCivilEng</i>	The PGCertCivilEng offers a flexible programme in advanced knowledge of civil infrastructure and industry. It offers a pathway into the Master of Civil Engineering.	BE(Hons), or BSc(Hons) in appropriate subjects.	February or July	Full-time: 6 months Part-time: up to 2 years
Postgraduate Certificate in Engineering <i>PGCertEng</i>	For professional engineers seeking advanced technical training or students looking for a one-semester advanced qualification. May be awarded unendorsed, or endorsed in Fire Engineering, or Mechanical Engineering. Students may be able to transfer to a master's degree.	BE, BE(Hons), or BSc(Hons) in appropriate subjects.	February or July	Full-time: 6 months Part-time: up to 4 years
Postgraduate Diploma in Applied Data Science <i>PGDipADS</i>	Applied Data Science caters for students who wish to build their data science capabilities and combine these with the skills and knowledge acquired from previous studies. This combination can add to employability and career prospects.	A university undergraduate degree, B average in relevant undergraduate 300-level courses.	February or July	Full-time: 1 year Part-time: 4 years
Master of Applied Data Science <i>MADS</i>	This Master's degree caters for students who wish to build their data science capabilities and combine these with the skills and knowledge acquired from previous studies. This combination can add to employability and career prospects.	A degree with a high level of attainment in appropriate subjects.	February or July	Full-time: 1 year Part-time: up to 3 years
Master of Architectural Engineering <i>MArchEng</i>	A practice-focused degree for students to gain professional, work-ready collaborative building design skills, and advanced training in selected technical areas of building design. This degree also caters for practitioners wanting to upskill. The degree can be endorsed in Building Services and Energy Engineering, Integrated Building Design, or Structural Engineering.	An appropriate 4-year bachelor's degree with First or Second Class Honours in a subject related to building design, or a postgraduate diploma in an equivalent subject. One year of professional practice experience is strongly recommended.	February or August*	Full-time: 1 year Part-time: up to 4 years
Master of Civil Engineering <i>MCivilEng</i>	A natural progression for students with an interest in extending their studies in Civil Engineering. The MCivilEng has endorsements in Construction Management, Digital Civil Engineering, Earthquake Engineering, Geotechnical Engineering, Renewable Energy, Smart Infrastructure (2022 start), Structural Engineering, Structural Fire Engineering, Transportation Engineering, Renewable Energy, and Water Engineering. The MCivilEng also includes an Indigenous Consultation and Engagement workshop.	BE(Hons) with first or second-class honours, or BSc(Hons) with first or second-class honours in appropriate subjects, or a PGCertCivilEng with a GPA of 5 or more.	February**	Full-time: 1 year Part-time: 4 years
Master of Engineering <i>ME</i>	The ME is a research degree completed by coursework and a thesis. The Master of Engineering may be awarded endorsed in Bioengineering, Chemical and Process Engineering, Civil Engineering, Construction Management, Earthquake Engineering, Electrical and Electronic Engineering, Mechanical Engineering, or Software Engineering.	BE(Hons) with first or second-class honours, or BSc(Hons) with first or second-class honours in appropriate subjects; or a PGCertEng with a GPA of 5 or more. Application is required by 10 January (for February intake) and 15 June (for July intake).	First day of month†	Full-time: 1–3 years
Master of Engineering in Fire Engineering† <i>MEFE</i>	Fire engineers specialise in the application of science and engineering principles to protect people and their environment from destructive fire. In the first half of the degree, students take block courses in areas such as fire dynamics and fire safety and systems. Online learning software is used to allow for flexible study. The second half of the degree requires a thesis.	BE(Hons), or BSc(Hons) in appropriate subjects, with first or second-class honours, or a PGCertEng with a GPA of 5 or more. It is recommended that international students apply by June .	February	Full-time: 16–36 months

* August only start for Building Services and Energy Engineering, and Structural Engineering.

** February or July start for Earthquake Engineering, and unendorsed.

† A degree by thesis only can be started on the first day of a month, however, February or July start only for Bioengineering and Civil Engineering, and February start for Construction Management.

‡ A student who does not have an appropriate background in fire engineering may be required to take ENGR 403 Introduction to Fire Engineering in January prior to being approved into the programme.

Qualification	Description	Requires	Start date	Duration
Master of Engineering in Management <i>MEM</i>	The MEM is designed and co-delivered with industry leaders. You will work in a supportive and collaborative environment to achieve a qualification which will accelerate your engineering degree and fast-track your career. You will also complete a six-month industry-based project.	BE(Hons) or other appropriate degree.	February	Full-time: 1 year
Master of Engineering in Transportation <i>MET</i>	The MET was established in cooperation with Te Whare Wānanga o Tāmaki Makaurau University of Auckland and with support from the transport industry in Aotearoa. It covers three main areas, with options to specialise in one or all: transportation planning, traffic engineering, and pavement engineering. Many courses are taught in block mode, allowing practising engineers to complete their degree while remaining in full-time employment.	BE(Hons) with first or second-class honours or other appropriate degree.	February or July*	Full-time: up to 4 years
Master of Engineering Studies <i>MEngSt</i>	The MEngSt caters for professional engineers seeking advanced technical training and is a taught master's degree with no thesis requirement. The degree may be awarded unendorsed or endorsed in Civil Engineering, Fire Engineering, Mechanical Engineering, or Renewable Energy.	BE(Hons) or BSc(Hons) with first or second class honours in appropriate subjects; or a PGCertEng with a GPA of 5 or more.	February or July	Full-time: 1 year Part-time: 5 years
Master of Human Interface Technology <i>MHIT</i>	Human Interface Technology aims to improve interactive technology to meet users' needs. Students develop specialist knowledge of interface design principles, the ability to evaluate hardware and software, and research and development skills. Prepares graduates for a career with wide application to areas such as health, education, entertainment, and business.	Bachelor's degree with honours in an appropriate field.	February	Full-time: 12 months
Doctor of Philosophy <i>PhD</i>	See page 10 for more information about PhD study at UC. See below for the list of available subjects.	Bachelor's degree with first or second-class division 1 honours, or master's degree with first or second-class division 1 honours, or equivalent.	Beginning of any month	Full-time: 3–4 years Part-time: 4.5–6 years

* July start subject to course availability.

Subject areas

Subject	Master's	PhD	PG Cert/Dip
Applied Data Science	•		•
Architectural Engineering	•		•
Bioengineering	•	•	
Chemical and Process Engineering	•	•	
Civil Engineering	•	•	•
Construction Management	•		•
Earthquake Engineering	•	•	•
Electrical and Electronic Engineering	•	•	
Engineering	•		•
Engineering Management	•	•	
Fire Engineering	•	•	•
Forest Engineering		•	
Human Interface Technology	•	•	
Mechanical Engineering	•	•	•
Renewable Energy	•		•
Software Engineering	•		
Transportation Engineering	•	•	•

Kōwaiwai: Postgraduate studies in Fine Arts



Since 1882, UC's Te Kura Kōwaiwai | Ilam School of Fine Arts has consistently produced high-quality graduates. Many have gone on to make notable contributions to Aotearoa New Zealand's cultural life and achieve acclaim internationally.

Te Kura Kōwaiwai | School of Fine Arts' staff are highly qualified and experienced artists, graphic designers, curators, filmmakers, art historians, and art theorists of world standing.

The School offers opportunities to gain valuable exhibition experience through an ongoing professional relationship with Te Puna o Waiwhetū | Christchurch Art Gallery.

Colourful experiences await

The extensive exhibition programme is closely linked to the artist-in-residence and teaching programmes. Global links are also evident in a busy schedule of visiting international artists who share their expertise with postgraduate students. Similarly, international student exchange agreements provide opportunities to attend prominent international art schools including Nova Scotia College of Art and Design.

On-campus facilities

Housed in purpose-built buildings, the School provides students with ample studio space, well-equipped workshops, digital labs, darkrooms, and extensive film and video facilities. In addition there is an on-site gallery, and a well-resourced visual arts and art history section in UC's Puaka-James Hight Library. This features a slide collection of 100,000 images and one of the country's top fine arts collections.

A reputation for innovation

The School's reputation for innovation and excellence is reflected in the high number of graduates represented among Aotearoa New Zealand's leading practising artists and current museum staff.

A postgraduate qualification from Te Kura Kōwaiwai | Ilam School of Fine Arts prepares graduates for specific professions such as graphic design and filmmaking, or equips them with the skills and attitudes necessary to successfully practice as artists and scholars in their individual areas of expertise.

For more information on postgraduate Fine Arts programmes, contact the Programme Coordinator of Postgraduate Studies, Te Kura Kōwaiwai | Ilam School of Fine Arts.

Career opportunities

Alongside the creative and practical skills learned, Fine Arts graduates develop excellent skills in organisation and time management. These skills prepare graduates for a wide range of



'I have made many valuable connections in my time at UC, and I enjoyed the accessibility, I was so grateful for the 24-hour access when approaching those deadlines!'

Mikaela

Master of Fine Arts in Sculpture
Library Assistant, National Library of New Zealand

Postgraduate programmes

Qualification	Description	Requires	Start date	Duration
Master of Fine Arts <i>MFA</i>	The MFA programme comprises either a submission of work in Film, Graphic Design, Painting, Photography, or Sculpture.	BFA(Hons) or equivalent, or significant professional practice or teaching experience. A special application for admission must be made by 1 November .	February	Full-time: 1 year Part-time: 2 years
Postgraduate Diploma in Art Curatorship <i>PGDipArtCuratorship</i>	The PGDipArtCuratorship consists of four courses including 'The Art Museum Past and Present', a special project in staging an exhibition, a gallery internship, and one course from Art History or Art Theory honours schedule.	BA, BFA, or a bachelor's degree and relevant professional experience.	February or July*	Full-time: 1 year Part-time: 2 years
Postgraduate Diploma in Fine Arts <i>PGDipFineArts</i>	The PGDipFineArts programme comprises advanced technical level studio work, and written research in either Film, Graphic Design, Painting, Photography, or Sculpture.	BFA with a B grade average; or a degree or a three-year diploma in fine arts, and professional experience.	February	Full-time: 1 year Part-time: 2 years

* July start subject to course availability.

Subject areas

Subject	Master's	PG Cert/Dip
Art Curatorship		•
Film	•	
Fine Arts	•	•
Graphic Design	•	•
Painting	•	•
Photography	•	•
Sculpture	•	•

employment opportunities nationally and internationally.

In particular, graduates who have taken courses in Photography, Film, and Graphic Design have clear career prospects in rapidly expanding industries in these areas. Other Fine Arts graduates have access to a wide range of vocations within a growing art world, both in Aotearoa and overseas.

Recent graduates have been employed as professional artists, art gallery directors, photojournalists, commercial photographers, film directors, designers, consultants, art conservators, illustrators, fashion designers, art critics, art historians, graphic designers, lecturers, and art teachers.

www.canterbury.ac.nz/careers

A vibrant arts scene

With over 200 concerts, exhibitions, theatre performances, and public lectures every year, UC offers you plenty of opportunities to 'Experience the Arts'.

Concerts

UCConcerts
www.canterbury.ac.nz/events/list-events

Exhibitions

Te Kura Kōwaiwai | Ilam School of Fine Arts
www.canterbury.ac.nz/arts/schools-and-departments/school-of-fine-arts/exhibitions

UCSA Music and Arts
www.ucsa.org.nz/events

Performing arts clubs

MUSOC, DramaSoc, TuneSoc, UCanDance, and many more! www.ucsa.org.nz/clubs

Public lectures and more

www.canterbury.ac.nz/ucconnect

Te Kura Kōwaiwai | Ilam School of Fine Arts
T: +64 3 369 3377
E: artsdegreeadvice@canterbury.ac.nz
www.canterbury.ac.nz/arts/schools-and-departments/school-of-fine-arts

Ngahere: Postgraduate studies in Forestry



Te Kura Ngahere
New Zealand School
of Forestry at UC is
internationally renowned
for research and
postgraduate education
over a range of subjects.

These areas of expertise include forest management, biodiversity, pest management, GIS and remote sensing, silviculture, forest economics, marketing, harvesting and transportation, restoration ecology, wood science and wood quality, forest genetics and breeding, and forest soils.

UC is the only university in the country offering internationally recognised professional postgraduate Forestry programmes.

Close connections

International experts visit regularly to share their knowledge through the Erskine Fellowship programme and an industry visitors programme.

The School's close relationship with other departments at UC, including Te Kura Pūtaiao Koiora | School of Biological Sciences, Te Rāngai Pūkaha | College of Engineering, and Te Rāngai Umanga me te Ture | College of Business and Law, allows postgraduate students to benefit from the broad range of academic and technical expertise across UC.

A number of scholarships are available for postgraduates — some funded by UC, some by the Aotearoa New Zealand government, and others by organisations and donations.

Te Kura Ngahere | School of Forestry provides a range of services to the industry including research, consultancy, professional development (CPD), and continuing education.

www.forestry.ac.nz

Field work and stations

UC's excellent laboratory and field facilities support postgraduate research activities. Graduate and postgraduate students have many opportunities to work in the field, visit other forestry organisations throughout the country, and participate on field trips to Te Tai Poutini West Coast, (Te Moeka o Tūawe Fox Glacier area); at field stations near Arthur's Pass, and in the Whakatū Nelson region, as well as the Waitaha Canterbury area.

Research

The School's academic staff are actively engaged in research on forest management, forest valuation, forest modelling, tree breeding and quantitative genetics, forest economics, silviculture, GIS and remote sensing, urban forestry, wood quality, entomology, biodiversity, restoration ecology, forest harvesting, forest engineering, and bioenergy.

Forestry research at UC is divided into four major clusters:

- sustainable land management
- forest engineering
- managing forest variability
- forestry as a business.

Postgraduate programmes

Qualification	Description	Requires	Start date	Duration
Postgraduate Diploma in Forestry <i>PGDipFor</i>	For those wanting to enhance their undergraduate studies, students complete 120 points from courses in the MForSc Schedule, normally including a forest management or a silviculture course.	BForSc or equivalent, or other relevant bachelor's or higher degree and relevant experience in a forestry-related area.	February or July	Full-time: 1 year Part-time: 2 years*
Master of Forestry Science <i>MForSc</i>	An MForSc will give you a head start into forest management, governance, or research at an advanced level. The degree may be taken by examination and report; by examination and thesis; or by thesis alone. This programme means you can complete a professional master's degree with coursework and a report in two years. Students enjoy small classes and a wide variety of courses to choose from, ranging from silviculture to advanced IT applications in forestry.	4-year BForSc, or other bachelor's degree with appropriate subjects, or a PGDipFor.	February or July; anytime start for thesis-only students	Full-time: 1–3 years Part-time: 18 months to 4 years*
Doctor of Philosophy majoring in Forestry <i>PhD</i>	The PhD comprises advanced research presented in a thesis. For more details, see page 10 .	Bachelor's degree with first or second-class division 1 honours, or master's degree with first or second class honours, or equivalent.	Beginning of any month	Full-time: 3–4 years Part-time: 4.5–6 years

* Part-time unless approved by the Te Rāngai Pūkaha | College of Engineering Dean (Academic).

New Zealand Dryland Forests Initiative

Te Kura Ngahere | School of Forestry is part of a \$14 million, seven-year collaborative research effort — Specialty Wood Partnership — aimed at maximising the value and export earnings of the forest industry. Led by Forest Growers Research in collaboration with Scion, UC, and the NZ Drylands Forests Initiative, the School's contribution looks at site and silviculture wood quality, forest health, and tree breeding.

Funding is provided through Hīkina Whakatutuki Ministry of Business, Innovation and Employment, the Forest Growers Levy Trust, a number of leading forestry companies, and the Farm Forestry Association.

Seven international PhD candidates within the School have recently finished their research projects, and a second cohort commenced their study in 2018.

The Wood Technology Research Centre

The WTRC provides information exchange among staff and students engaged in wood-related research. Participants are from the Departments of Chemical and Process Engineering, Forestry, Civil and Natural Resources Engineering, Electrical and Computer Engineering, Mechanical Engineering, Chemistry, and Biological Sciences.

Career opportunities

With forestry being one of Aotearoa New Zealand's biggest export earners and a major industry worldwide, UC Forestry graduates are in high demand. Forestry offers rewarding careers in areas such as tree breeding, road engineering, timber harvesting/processing, marketing, planning, policy, biosecurity, biodiversity, conservation, plantation, and sustainable land management.

Forestry graduates develop a valuable set of transferable skills, including problem solving and decision making, project management and teamwork, economic and commercial awareness, and computing skills and geospatial techniques.

www.canterbury.ac.nz/careers

Te Kura Ngahere | School of Forestry
T: +64 3 369 3500
www.canterbury.ac.nz/engineering/schools/forestry



'I meet a lot of lovely people who have a wide knowledge and great point of views, not only about forestry, but also other things.'

Pipiet

Master of Forestry Science
Data Analyst, Forestry Service

Hauora: Postgraduate studies in Health Sciences



Te Kura Mātai Hauora School of Health Sciences offers an interdisciplinary postgraduate education with a range of clinical and non-clinical programmes.

Te Kura Mātai Hauora | School of Health Sciences fosters collaborative initiatives within the University, with other tertiary institutions, and within the health sector. Increasingly, employment in the health sector requires postgraduate qualifications, particularly for senior roles.

The School's programmes and research activities respond to the dynamic nature of the health sector and its workforce. These qualifications give health professionals, non-clinical members of the health workforce, and others interested in the health sector the opportunity to examine a range of issues in health sciences, and where relevant to improve their professional practice.

Research

UC has a strong profile in health research and teaching in the fields of biochemistry, clinical psychology, speech and language pathology and audiology, health service management, health technologies, Māori health, medical physics, and population health — including epidemiology, health geography, health promotion, and education.

The School has a wide range of research interests including health informatics, refugees, chronic diseases and childhood disorders, primary health care, and workforce issues for specific health sector groups such as the Pacific workforce.

It is home to the Health Services Assessment Collaboration Research Lab (HSAC), the Wayne Francis Cancer Epidemiology Research Group, other externally funded projects, as well as a teaching and research clinic.

Research students share facilities with academics and researchers, which fosters collaboration.

The Health Precinct — Manawa

Manawa is a new world-class hub for health education, research, and innovation located in the heart of Ōtautahi Christchurch's health precinct. It is a collaborative partnership between UC, Ara Institute of Canterbury, and Te Poari Hauora o Waitaha | Canterbury District Health Board to share infrastructure and facilities.

Health Science programmes provide courses, at both postgraduate and undergraduate levels, in counselling, child and family psychology, specialist teaching and, in collaboration with Ara Institute of Canterbury, nursing.

UC's contribution to the Health Precinct includes postgraduate teaching, research, clinical practice, and professional development across several disciplines with specialist undergraduate education and training on site.

Manawa means heart, patience, or breath in te reo Māori, and was gifted to the partnership as a reflection of the proverb “Manawa whenua, manawa tangata”, which describes the intimate connection between the health of our environment and human health.

Featured qualifications

Master of Health Sciences *MHealSc*

The MHealSc is a 240-point research-focused degree aimed at people who are currently employed, or seeking employment, in a health-related field, the social services, or local or central government. It gives you the opportunity to examine critically a range of significant issues in health sciences, and where relevant to improve your professional practice.

Why study a MHealSc at UC?

- It is an interdisciplinary degree where you will complete a programme of advanced study, choosing from courses in over 20 disciplines.
- UC also offers a coursework-based (180-point) Master of Health Sciences Professional Practice.
- There is the option of a particular focus in environment and health, health and community, health behaviour change, health information management, nursing, or palliative care.

Master of Counselling *MCouns*

The MCouns gives you the opportunity to extend your theoretical grounding and professional skills to work as a counsellor in a variety of settings. You will be trained to identify systematic, effective ways to help clients find simple, acceptable solutions to their current concerns and problems.

Why study a MCouns at UC?

- UC's Master of Counselling is the only postgraduate counselling programme in the South Island. You will learn about the theoretical underpinnings of solution-focused counselling; social constructionism; and become skilled in using appropriate thinking and techniques.
- The degree comprises five postgraduate papers and a three-paper professional research portfolio or thesis.
- Graduates work as school counsellors, family therapists, health counsellors, career counsellors, tertiary counsellors, consultants, managers, and counsellor educators. They work in community agencies, private practice, medical centres, and schools.

Master of Sport Science *MSS*

The MSS is a one-year, coursework-based degree that allows you to upskill and update your sport science knowledge, or develop your expertise for a career in high performance sport.

Why study a MSS at UC?

- Courses draw on sport science research, as well as experts in the field from within and outside UC, to provide you with historically and culturally grounded knowledge and skills.
- Flexibility to choose courses in biomechanics, exercise physiology, sport psychology, sport nutrition, strength and conditioning, and performance analysis.
- Findings from the 2013 Sport and Recreation Sector Workforce to 2026 Survey indicate that in Aotearoa New Zealand, up to 44,000 new staff will be required in the sector due to growth and retirements by 2026.
- Lecturers are involved in sport science or health as active researchers and supervisors, as well as serving professional bodies in their discipline.
- The field of sports science is developing rapidly, and so this degree will allow students to stand out in a competitive job market.

Career opportunities

The health sector is one of Aotearoa New Zealand's biggest employers with a wide range of clinical career opportunities. The health workforce also includes many non-clinical roles, which make up about one third of the total health workforce.

There are health-related career opportunities in local and central government, the voluntary sector, social services, industry, and research. In an increasingly diverse and ageing society, career opportunities in the health workforce will continue to expand. A health sciences specialisation can lead to work in such areas as health promotion, health and community, behaviour change, health policy, administration, information management, health technology assessment, and research.

www.canterbury.ac.nz/careers

Te Rāngai Ako me te Hauora | College of Education, Health and Human Development

T: +64 3 369 3333

E: educationadvice@canterbury.ac.nz

www.canterbury.ac.nz/education

Subjects

Subject	Master's	PhD	PG Cert/Dip	Grad Cert/Dip
Child and Family Psychology	•		•	
Counselling	•			
Counselling Studies			•	
Environment and Health*	•		•	
Health Behaviour Change*	•		•	
Health Information Management*	•		•	
Health Sciences	•	•	•	
Health and Community**	•		•	
Nursing*	•			
Palliative Care*	•		•	
Specialist Teaching	•		•	
Sport Coaching				•
Sport Science	•		•	

* Offered as an endorsement to the Postgraduate Diploma in Health Sciences, the Master of Health Sciences, and the Master of Health Sciences Professional Practice. These qualifications may be taken with or without endorsement.

Postgraduate programmes

Qualification	Description	Requires	Start date	Duration
Graduate Certificate in Sport Coaching <i>GradCertSpC</i>	Provides practising coaches and those in the sports industry (or those who wish to work in it) the chance to develop their professional coaching skills.	A bachelor's degree, or ability to satisfy the Dean of relevant post-secondary study and work experience.	January, February, or July	Full-time: 6 months Part-time: up to 3 years
Postgraduate Certificate in Counselling Studies <i>PGCertCounSt</i>	The PGCertCounSt provides formal recognition for people wishing to add counselling skills alongside complementary professional qualifications eg, in education or health.	Any relevant bachelor's degree with a B grade average or better at 300-level.	February	Part-time: up to 2 years
Postgraduate Certificate in Health Sciences <i>PGCertHealSc</i>	Allows health professionals, non-clinical members of the health workforce, and others interested in the health sector a chance to examine a range of issues in health sciences, and where relevant to improve their professional practice.	Relevant bachelor's degree, or appropriate health professional qualification.	February or July	Full-time: 6 months Part-time: up to 2 years
Postgraduate Certificate in Palliative Care <i>PGCertPC</i>	The PGCertPC develops health practitioners' skills in palliative care and introduces palliative care as a research field. Students gain the knowledge and understanding needed to provide a holistic approach to the assessment, planning, implementation, and evaluation of the needs of patients and whānau living with a life-limiting condition.	Relevant bachelor's degree or appropriate health professional qualification, as well as relevant professional experience, and access to a relevant clinical placement.	February or July	Part-time: Normally completed over 2 years
Postgraduate Certificate in Sport Science <i>PGCertSS</i>	An ideal qualification for those wanting professional development in sport science knowledge and industry expertise.	Relevant bachelor's degree in sport and/or science with a B average or better.	February or July	Full-time: 6 months
Postgraduate Diploma in Child and Family Psychology <i>PGDipChFamPsysc</i>	A professional qualification, this Diploma is designed for students who wish to become registered child and family psychologists with the New Zealand Psychologists' Board. Entry is limited to 12 places — applications close on 1 October .	Bachelor's degree in Psychology or equivalent and be enrolled in or completed an approved master's or PhD. Also requires a pass in PSYC 206, CFPY 601, CFPY 602, CFPY 603, COUN 671, HLTH 472, and an approved research methods course, or equivalent.	November	Full-time: 2 years Part-time: up to 4 years
Postgraduate Diploma in Health Sciences <i>PGDipHealSc</i>	Aimed at people who are currently employed in, or seeking employment in, a health-related field, the social services, or local or central government. Students complete a programme of advanced, specialised study and receive their qualification either unendorsed or endorsed in one of several areas. See the subject list on page 39 .	Relevant bachelor's degree, or appropriate health professional qualification with a B average or better.	February or July	Full-time: 1 years Part-time: up to 4 years

* Students are normally expected to have some bioscience in their academic background with a B average or better.



‘Most of the lecturers know who you are, what your interests are and look at ways to help you to achieve your goals. I’m truly thankful to the University for helping me grow into who I am today.’

Mark
Master of Health Sciences
Kaiako, Haeata Community Campus

Qualification	Description	Requires	Start date	Duration
Postgraduate Diploma in Sport Science <i>PGDipSS</i>	Develop expertise in the sporting industry and upskill on sporting knowledge for further career opportunities.	Relevant bachelor's degree in sport and/or science with a B average or better.	February or July	Full-time: 1 year
Master of Arts MA Master of Science** <i>MSc</i>	In Child and Family Psychology – go to www.canterbury.ac.nz/health/qualifications-and-courses/child-and-family-psychology	See pages 16 (MA) and 52 (MSc).	February	See pages 18 (MA) and 52 (MSc)
Master of Counselling† <i>MCouns</i>	The MCouns uses a solution-focused model of counselling and is the only master's counselling degree in Te Waipounamu South Island. Students learn to identify and use systematic, effective ways to help clients. Some courses are also available to Health/Education postgraduate students.	Relevant bachelor's degree with a B average or better and with relevant professional experience or suitability to be a counsellor. Limited to 10 places – applications close 1 October .	February	Full-time: 2–4 years Part-time: up to 6 years
Master of Health Sciences <i>MHealSc</i>	In the MHealSc programme, students may either follow a general programme, or focus on a specialisation and receive their qualification endorsed in one of several areas. Involves a research component. See the subject list on page 39 .	Relevant bachelor's degree or appropriate health professional qualification with B average.	February or July	Full-time: Not less than 2 years Part-time: up to 4 years
Master of Health Sciences Professional Practice <i>MHealScProfPr</i>	Coursework-based version of the MHealSc, allowing students to complete 180 points of courses. Can be awarded unendorsed or endorsed in Environment and Health, Health Behaviour Change, Health Information Management, Health and Community, Nursing (see below), and Palliative Care.	Relevant bachelor's degree, or appropriate health qualification with a B average or better. Requirements may be waived if the candidate can show practical or professional experience.	February or July	Full-time: 18 months (Nursing endorsement an additional 6 months) Part-time: up to 4 years
Master of Health Sciences Professional Practice (Nursing)/ Bachelor of Nursing <i>MHealScProfPr/BN</i>	This joint initiative between UC and Ara Institute of Canterbury allows graduates to gain two qualifications in just two and a half years. Students study the MHealScProfPr full-time and the BN part-time for two years, thereafter they are full-time Ara students.	Degree relevant to health sciences, or an appropriate health or allied professional qualification* of at least 3 years equivalent full-time tertiary study.	February	Full-time: 18 months
Master of Sport Science <i>MSS</i>	This Master's offers sport science research insights from experts within and outside of UC, in areas such as high performance exercise physiology and biomechanics.	Relevant bachelor's degree in sport and/or science with a B average or better.	February or July	Full-time: 12–18 months
Doctor of Philosophy <i>PhD</i>	The PhD comprises advanced research presented in a thesis. For more details, see page 10 .	Bachelor's degree with first or second-class division 1 honours, or master's degree with first or second class honours, or equivalent.	Beginning of any month	Full-time: 3–4 years Part-time: 4.5–6 years

** This programme starts with CFPY 501 Models of Practice in Child and Family Psychology (Summer School). This is a limited-entry programme, with only 10 places available. Applications for the programme close October 1st. If you are also applying for admission to UC, please ensure you apply several weeks before this date, to allow time for your application to be processed.

† This is a limited-entry programme and applications close on **October 1** of the year preceding entry. If you are also applying for admission to UC, please ensure you apply several weeks before this date, to allow time for your application to be processed.

Ture: Graduate and postgraduate studies in Law



Founded in 1873, UC's Te Kura Ture | School of Law has a proud history of excellence in teaching, research, and scholarship. It enjoys an international reputation for producing outstanding graduates, who benefit from being part of a professionally relevant, community focused law school.

UC offers a wide range of opportunities for postgraduate studies, and is ranked as one of the world's top 150 law schools.*

Leading teachers and researchers

Our exceptional teaching staff are leaders in their respective fields across areas including International Law, Public Law, European and Comparative Law, as well as the full range of Common Law subjects. They are responsible for writing many key Aotearoa New Zealand textbooks and write for international publishers LexisNexis and Reuters.

Many of our academics are on editorial boards for a number of well-respected international journals including the Journal of Medical Law and the Media and Arts Law Review. UC is also home to the Canterbury Law Review and the New Zealand Yearbook of International Law.

Study specialist areas and/or broaden your research

The School has a particularly strong reputation in the fields of International Law and Governance and offers a master's programme in International Law and Politics (LLM(IntLaw&Pols)). Students also have the opportunity to further their studies in areas of specific expertise offered by the School.

Alongside the specialist taught ILAP programme, the School also offers research-focused degrees. The general Master of Laws (LLM) offers students the chance to undertake research papers and a dissertation or a single thesis option. There is also a PhD programme.

Additional benefits at UC

- Postgraduate students are welcomed as an integral part of the Law School and enjoy the collegial atmosphere between students and staff.
- The Law Students' Society has over 800 members and is very active, organising many social events throughout the year.
- Te Pūtairiki | Māori Law Students' Association provides a supportive environment for Māori law students.

Research

Te Kura Ture | School of Law has three research clusters — the Centre for Commercial Law, the International and Comparative Law Group and the Institute of Law, Emergencies and Disasters — all of which welcome postgraduate involvement.

The School has strong international links and students are encouraged and supported in developing their international research profile. Postgraduate research students may apply to the staff research fund to finance these activities.

In addition to UC's scholarship opportunities, one university PhD Scholarship is reserved for study in Te Kura Ture | School of Law.

Interested students are encouraged to contact the School to discuss supervision before making a formal application.

Library staff offer postgraduate students specialist training in legal research methods.

Career opportunities

Postgraduate study allows you to develop in-depth expertise in particular fields of legal specialisation, broaden your knowledge in a range of legal subjects including some not taken at undergraduate level, and combine law study with related disciplines.

Postgraduate study can lead to careers in the legal profession, the public sector, and non-governmental organisations, among many other career paths.

* QS World University Rankings by Subject, 2020.

Postgraduate programmes

Qualification	Description	Requires	Start date	Duration
Graduate Diploma in Criminal Justice <i>GradDipCJ</i>	The GradDipCJ allows you to further your study with a vocationally oriented qualification in Criminal Justice.	Bachelor's degree.	February or July*	Full-time: 1–2 years Part-time: up to 4 years
Master of Criminal Justice <i>MCJ</i>	The Master of Criminal Justice is a relevant qualification for those seeking employment in a range of criminal justice sector occupations and professions, including Police, Corrections, the Ministry of Justice, and in policy development and social service roles.	BBCJ with a B average, or equivalent.	February	Full-time: 1 year Part-time: up to 3 years
Master of Laws <i>LLM</i>	The LLM degree is flexible and offers a wide choice of topics for specialised research. Students will develop in-depth expertise through the conduct of research under the supervision of staff. It may be taken by thesis, or a combination of research papers and dissertation.	LLB (or equivalent) with good grades.	February or July**; or anytime start for thesis-only	Full-time: 1–2 years Part-time: 2–4 years
Master of Laws (International Law and Politics) <i>LLM(IntLaw&Pols)</i>	Designed for students who wish to develop specialist knowledge in international law and politics. Students take courses in international law and international politics, plus a dissertation. The degree prepares students for careers in the diplomatic service, specialised legal practice, government, international organisations, non-governmental organisations, and the military.	LLB (or equivalent) with good grades.	February or July**	Full-time: 1–2 years Part-time: 2–4 years
Doctor of Philosophy majoring in Law <i>PhD</i>	The PhD comprises advanced research presented in a thesis. For more details, see page 10 .	Bachelor's degree with first or second-class honours division 1, or master's degree with first or second-class honours division 1, or equivalent.	Beginning of any month	Full-time: 3–4 years Part-time: 4.5–6 years

* July start subject to course availability.

** Although it is possible to start in July, the School of Law encourages all students to start in February. This is because there are two compulsory courses for the degree which are offered in the February semester only. It is beneficial for students to have taken these courses before they begin their optional courses.

In addition, postgraduate study in Law offers the possibility of a career in academic teaching and research. Our alumni include leading academics and policy makers in Aotearoa New Zealand and abroad.

GradDipCJ graduates will be equipped for a career in the criminal justice fields, in particular, roles within Ngā Pirihimana o Aotearoa | Police, Tahū o te Ture | Ministry of Justice, and Ara Poutama Aotearoa | Department of Corrections.

The Graduate Diploma is also relevant for work in other areas of government including prisons, probation, and parole; criminal justice policy; forensics; public and private investigation, and security; and social work.

www.canterbury.ac.nz/careers

Te Kura Ture | UC School of Law

T: +64 3 369 0406

E: law-enquiries@canterbury.ac.nz

www.canterbury.ac.nz/law



‘The support I received at UC to complete my PhD was second to none, with supervisors who are leaders in their field, excellent research assistance from the library staff, and a friendly and helpful administrative team. My PhD has since provided the stepping stone for me to start my academic career right here at UC.’

Dr Mark Wright

Lecturer, Te Kura Ture | School of Law

Puoro: Graduate and postgraduate studies in Music



Students at UC's Te Kura Puoro | School of Music have a vibrant, welcoming, and stimulating environment to study and perform in.

We are surrounded by music and sound through media. Music plays a part in advertising, education, culture, tourism, and events, and permeates peoples' social lives, ensuring there is strong demand for first-class musicians, producers, and technicians.

Te Kura Puoro | School of Music staff are nationally and internationally respected composers, researchers, recording artists, musicologists, and performers. Performance tutors and lecturers are leading practitioners in their fields.

UC's Music students, across all levels, take part in a large number of concerts and recitals, seminars and workshops, master classes, and demonstrations, as a key part of their university experience. Many of our performance postgraduates are also well-established in professional careers in Aotearoa New Zealand and throughout the world, and many have won national competitions and awards.

Equipment and facilities

The School is well equipped with facilities for music. Te Puna Mātauraka o Waitaha | Central Library and Te Kura Puoro | School of Music

resource centre contain an extensive collection of scores, books, and recordings, including some resources not found anywhere else in the country.

Sophisticated digital environments are provided through specialist software and state-of-the-art computers for the transformation and manipulation of sound. Other music facilities include top-quality pianos and string instruments, practice rooms, a chamber organ, and Balinese gamelan.

Music premises in the city

UC's music students can undertake lessons and conduct music performances in the restored Chemistry building in the Arts Centre situated in central Ōtautahi Christchurch. UC's use of this historic space increases performance music occasions and collaborations, and provides opportunities for music students to interact with the city's local and international arts scene, as well as engage with the community.

Students have the opportunity to participate in Ōtautahi Christchurch's many amateur and professional groups, whether in opera, theatre, orchestral music, choral, and instrumental. A number of orchestral students perform regularly with the Christchurch Symphony Orchestra.

Research

The School's research activities range broadly across the disciplines of musicology, ethnomusicology, composition, and performance. Areas of expertise include performance (voice, piano, organ, and most



'My PhD is directly related to the work that I am doing within the community and throughout New Zealand.'

Andrew

PhD in Music

Musical Director, New Zealand Secondary Students' Choir

Graduate and postgraduate programmes

Qualification	Description	Requires	Start date	Duration
Bachelor of Arts with Honours majoring in Music <i>BA(Hons)</i>	See page 17 .	BA, or any bachelor's degree plus relevant graduate diploma.	February or July*	Full-time: 1 year Part-time: up to 2 years
Bachelor of Music with Honours <i>MusB(Hons)</i>	For graduates of the MusB (or equivalent) with good grades who wish to extend themselves. May be taken in Composition or Performance.	MusB; entry into Performance is limited and applications for auditions close on 20 September of the preceding year.	February	Full-time: 1 year
Graduate Diploma in Arts majoring in Music <i>GradDipArts</i>	See page 17 .	Any bachelor's degree.	February or July*	Full-time: 1 year Part-time: up to 5 years
Postgraduate Certificate in Arts majoring in Music <i>PGCertArts</i>	See page 17 .	BA or an equivalent degree with grades to a specified level.	February or July*	Full-time: 6 months Part-time: 1 year
Postgraduate Diploma in Arts majoring in Music <i>PGDipArts</i>	See page 17 .	BA or an equivalent degree with grades to a specified level.	February or July*	Full-time: 1 year Part-time: up to 2 years
Master of Arts majoring in Music <i>MA</i>	See page 18 .	BA(Hons) or MusB(Hons).	February or July.* Anytime start for Part II (thesis only)	Full-time: 2–3 years Part-time: up to 6 years
Master of Music <i>MMus</i>	Follows the MusB(Hons) and may be taken in composition or performance to an advanced technical level. Students intending to enrol should choose courses carefully to ensure prerequisites have been met.	MusB(Hons) or equivalent, with good grades. Evidence of composition quality is required. Entry to the Performance option is limited and applications for audition close on 15 September of the preceding year. Subject to approval by the Programme Coordinator.	February or July	Full-time: 1 year Part-time: 2 years
Doctor of Musical Arts <i>DMA</i>	The DMA is aimed at those wishing to undertake advanced research in music composition or performance. It comprises scholarly research (thesis) and performance practice (public music performance or the presentation of compositions). Normally requires an audition, interview, and/or submission of previous academic work and recommendation from the School of Music.	Bachelor's degree in Music with first or second-class division 1 honours, or master's degree in Music with distinction or merit (or equivalent). An audition interview, and/or portfolio of previous work is also required.	Beginning of any month	Full-time: 3 years Part-time: 4–5–6 years
Doctor of Philosophy majoring in Music <i>PhD</i>	The PhD comprises advanced research presented in a thesis. For more details, see page 10 .	Bachelor's degree with first or second-class division 1 honours, or master's degree with first or second-class division 1 honours, or equivalent.	Beginning of any month	Full-time: 3–4 years Part-time: 6 years

* July start subject to course availability.

orchestral instruments), composition, music history and musicology, ethnomusicology, musicianship skills, and conducting.

Career opportunities

Graduates of Music find positions in orchestras, opera houses, conservatories, universities, schools, and other education contexts. They are prominent in areas of musical leadership with community groups such as choirs and orchestras. Graduates often work in fields such

as journalism, television, and radio (planning as well as production), publishing, and in technical areas, including recording.

People with musical talents are in demand in the hi-tech areas of computer instruments and music technology, and are becoming increasingly sought after by various festival organisers and arts organisations.

www.canterbury.ac.nz/careers

Te Kura Puoro | School of Music

T: +64 3 369 4411

E: music@canterbury.ac.nz

www.canterbury.ac.nz/arts/schools-and-departments/school-of-music

Hanga Otinga: Postgraduate studies in Product Design



Te Kura Hanga Otinga School of Product Design has qualifications and staff with a unique blend of engineering, science, design, and entrepreneurship

Our students graduate with skills in product design and service innovation practice, advanced business knowledge related to product innovation, strong problem-solving, and critical evaluation abilities.

Research

Staff across Te Kura Hanga Otinga | School of Product Design are involved in a range of research, including Computer Vision based natural feature registration, computer graphics, augmented and virtual reality, artificial intelligence, societal aspects of design, design methods, ethics and morality in design, the pedagogy of design, bio-based and sustainable materials, bio-inspired design and engineering, material perception in the context of product design, and additive manufacturing/3D printing of biobased materials.

Additionally, the investment of \$7.7 million into the Applied Immersive Gaming Initiative intends to accelerate research and public use of immersive gaming applications. This project, in collaboration with Tangata Hangarau, Hangarau Tangata | Human Interface Technology Lab New Zealand (HIT Lab NZ), will enhance the emerging technology sector in Ōtautahi Christchurch and New Zealand.

Industry Collaboration

Te Kura Hanga Otinga | School of Product Design works closely with industry to ensure that our qualifications are relevant and applicable to current businesses. We also undertake projects and research alongside many of our industry partners.

Design Practice Teaching Fellows

We have the additional skills of a group of Design Practice Teaching Fellows who work predominantly in industry but also teach within the school, bringing an industry focused approach to our teaching.

Career opportunities

Our master's programmes will prepare you for innovation in our modern, dynamic economy. Product Design graduates with business sense as well as technical skills will suit any part of the product creation lifecycle – designing concepts, testing prototypes, pitching to sellers, and marketing to consumers.

Entrepreneurial and innovative skills are highly sought after in our global economy, and with these programmes you will be well prepared to follow your own product line or business venture aspirations.

Depending on the focus in your degree, you may suit roles in commercial, educational, IT, consultancy, quality assurance (QA), government, design and advertising sectors, research and development (R&D), product review and critique, and marketing analysis within enterprises needing skilled graduates.

www.canterbury.ac.nz/careers

**Te Kura Hanga Otinga
School of Product Design**

T: +64 3 369 0299

www.canterbury.ac.nz/engineering/schools/school-of-product-design

Postgraduate programmes

Qualification	Description	Requires	Start date	Duration
Postgraduate Certificate in Product Design <i>PGCertProdDesign</i>	The Postgraduate Certificate in Product Design (PGCertProdDesign) offers both practical and theoretical studies in designing product concepts for home, business, and commercial industry use.	BProdDesign with GPA 5 or above at 300-level, or conjoint BProdDesign and BCom or BProdDesign and Science with GPA 5 or above at 300-level, or other appropriate design degree with GPA 5 or above at 300-level.	February or July	Full-time: 18 months Part-time: 2 years
Postgraduate Certificate in Product Innovation <i>PGCertProdInnovation</i>	UC's Postgraduate Certificate in Product Innovation offers students from any study background advanced practical and theoretical skills in creating products for entertainment, homeware, cosmetics, IT, food, healthcare, and many other industries.	Bachelor's degree with GPA 5 or above.	February or July	Full-time: 18 months Part-time: 2 years
Master of Product Design <i>MProdDesign</i>	The Master of Product Design (MProdDesign) takes advantage of UC's research expertise in a range of commerce, IT, and engineering fields. The programme provides a mixture of practical work and theory with original supervised research.	BProdDesign with GPA 5 or above at 300-level, or conjoint BProdDesign and BCom or BProdDesign and Science with GPA 5 or above at 300-level, or other appropriate design degree with GPA 5 or above at 300-level.	February or July	Full-time: 18 months Part-time: 36 months*
Master of Product Innovation <i>MProdInnovation</i>	Open to students of any study background, the Master of Product Innovation (MProdInnovation) is a perfect opportunity to access specialised facilities and industry experts at university while beginning to develop your own product or business ideas.	Bachelor's degree with GPA 5 or above.	February or July	Full-time: 18 months Part-time: 36 months*
Doctor of Philosophy majoring in Product Design <i>PhD</i>	The PhD comprises advanced research presented in a thesis. For more details, see page 10 .	Bachelor's degree with first or second-class division 1 honours, or master's degree with first or second-class division 1 honours, or equivalent.	Beginning of any month	Full-time: 3–4 years Part-time: 6 years

* Part-time unless approved by the Te Rāngai Pūkaha | College of Engineering Dean (Academic).



‘The School of Product Design and the faculty truly enable and guide you to come up with ideas and create solutions for day-to-day normal problems that a lot of people experience. To be completely honest, this kind of innovation is and is going to be a hugely important part of our future. Especially as there is a major focus on sustainability in the course.’

Holly

Studying towards a Bachelor of Product Design in Industrial Product Design
Urban Dance Teacher, Swarm Studios

Pūtaiao: Graduate and postgraduate studies in Science



UC scientists are involved in groundbreaking work. They have discovered a new plant species, halved the rate of pneumonia in stroke patients, and helped fight mosquito-borne diseases in Tonga.

UC is ranked in the top 150 universities in the world for Geography and Earth Sciences, and in the top 200 for Environmental Sciences.*

For research, UC is ranked first in Aotearoa New Zealand for Ecology, Evolution and Behaviour, Marketing and Tourism, Political Science, International Relations and Public Policy, and Public Health.**

Expert UC staff are joined by visiting international authorities every year, through the Erskine programme. Specialists from all over the world come to UC to teach and collaborate, providing unparalleled access to expertise.

Science facilities at UC are world-class and are enhanced by the Rutherford Regional Science and Innovation Centre (RRSIC), which includes specialist teaching and research laboratories for physics, astronomy, chemistry, geology, geography, and biological sciences. UC's four field stations are unique in Aotearoa. See [page 49](#).

* QS World University Rankings by Subject, 2020.

** The Tertiary Education Commission Performance-Based Research Fund Assessment, 2018.

Featured qualifications

Master of Urban Risk and Renewal *MURR*

Cities and urban areas are increasingly facing challenges associated with flood risk, coastal erosion, and sea level rises as well as urban growth and development. In this programme you will learn how communities and governments address the challenges facing their cities — now and in the future.

Why study a MURR at UC?

- Graduates can have any undergraduate degree, from most disciplines.
- UC has strong connections within Ōtautahi Christchurch so students can work alongside community groups and local government.
- Ōtautahi Christchurch provides a living laboratory for urban renewal and community-driven development

Master of Financial Engineering *MFEng*

Financial engineering is a cross-disciplinary field combining financial and economic theory with the mathematical and computational tools needed to design and develop financial products, portfolios, markets, and regulations.

Why study a MFEng at UC?

- UC maintains strong connections with industry to ensure students develop skills required by employers.

- Students are provided with interdisciplinary learning across finance and economics, mathematics and statistics, and computer science and software engineering.
- Graduates will be work ready for the international job market in the finance industry and related fields.

Master of Disaster Risk and Resilience *MDRR*

Disaster risk management is a challenging, exciting, and rewarding field. In this programme, you will be exposed to cutting-edge science, professional best-practice, and gain knowledge and skills to help communicate in the face of adversity so that organisations can recover and become more resilient.

Why study a MDRR at UC?

- Learn from a diverse teaching team of experienced practitioners, active researchers, and leading academics.
- The programme has won awards for its innovative content and delivery modes, including from the International Association of Emergency Managers (IAEM).

Research

All Science departments at UC are involved in groundbreaking research which has an international reputation. Typical research can be found in projects as diverse as developing novel nanomaterials, detecting potentially dangerous microsleeps in workers, producing cutting-edge

speech perception technology, understanding the health benefits of micronutrients, as well as identifying air pollution mitigators.

UC earth scientists are heavily engaged in natural hazard research (earthquakes, volcanic eruptions, landslides), engineering geology, climate, and geothermal research.

Working with industry and external organisations internationally, our world-leading projects are funded from both within Aotearoa New Zealand and internationally.

Study in a unique natural environment

UC offers research opportunities in the field that no other Aotearoa New Zealand university can match. Our field stations are unique in Aotearoa; you could study the alpine environment and ecology at Cass in north Waitaha Canterbury, or explore the diverse geological landscapes at Kawatiri Westport.

Best stargazing site on Earth

UC students and staff can use the Ōtehiwāi Mount John Observatory, near Takapō Tekapo. It is set within the Aoraki-Mackenzie Dark Sky

Reserve, the biggest dark-sky areas in the world. The observatory is home to six telescopes, including Aotearoa's biggest telescope, which can observe 50 million stars each clear night. Experts credit it as one of the best stargazing sites on Earth.

Varied locations for research

UC is home to a large number of research centres and institutes (see **pages 6–7**) including many focusing on Science.

UC is a partner in the Southern African Large Telescope (SALT) project, and operates a field station in Nigeria as part of the Nigerian Montane Forest project.

Students also have the opportunity to go to more remote field sites in the sub-Antarctic and Antarctica through postgraduate programmes offered by Gateway Antarctica, the Centre of Antarctic Studies and Research at UC.

www.canterbury.ac.nz/research

Career opportunities

As well as having general and specialised

subject knowledge, Science graduates are experts in problem solving, teamwork, and communication. Comfortable with the latest technology, graduates are ideally suited to the knowledge economy and are highly employable. Our Science graduates go on to careers in research, business, industry, education, environmental science, health, and central and local government organisations.

Postgraduate study in Science is an opportunity to obtain specialist knowledge in a particular topic leading to further advancement. Access to UC's centres of research and innovation, as well as UC's unique field stations, enable postgraduate students to conduct inspiring research in Science and get a taste for the sort of employment prospects they can pursue after study.

www.canterbury.ac.nz/careers

Te Rāngai Pūtaiao | College of Science

T: +64 3 369 4141

E: collegeofscience@canterbury.ac.nz

www.canterbury.ac.nz/science

Subject areas

Subject	Honours	Master's	PhD	PG Cert/Dip	Grad Cert/Dip
Antarctic Studies		•	•	•	
Applied Data Science		•		•	
Astronomy	•	•	•	•	•
Audiology		•	•		
Biochemistry	•	•	•	•	•
Biological Sciences	•	•	•	•	•
Biotechnology	•	•	•	•	
Cellular and Molecular Biology	•	•	•	•	
Chemistry	•	•	•	•	•
Child and Family Psychology		•		•	
Clinical Psychology				•	
Computational and Applied Mathematical Sciences	•	•	•	•	
Computer Science	•	•	•	•	•
Data Science	•	•		•	•
Disaster Risk and Resilience		•	•		
Ecology	•	•	•	•	
Economics	•	•	•	•	•

Subject areas (continued)

Subject	Honours	Master's	PhD	PG Cert/Dip	Grad Cert/Dip
Economics and Mathematics	•				
Engineering Geology		•	•		
Environmental Science	•	•	•	•	
Finance		•	•	•	•
Finance and Mathematics	•			•	
Finance and Statistics	•			•	
Financial Engineering	•	•		•	
Geography	•	•	•	•	•
Geospatial Science and Technology/Spatial Analysis for Public Health		•		•	
Geology	•	•	•	•	•
Industrial and Organisational Psychology		•	•		
Linguistics			•		•
Mathematics	•	•	•	•	•
Mathematics and Philosophy	•		•	•	
Mathematics and Statistics	•				
Mathematical Physics	•		•	•	
Medical Physics	•	•	•	•	
Medical Physics (Clinical)		•	•	•	
Microbiology	•	•	•	•	
Philosophy		•	•	•	•
Physics	•	•	•	•	•
Psychology	•	•	•	•	•
Science Education			•		
Speech and Language Pathology		•			
Speech and Language Sciences		•	•	•	
Statistics	•	•	•	•	•
Urban Resilience and Renewal		•			
Water Resource Management		•	•	•	



‘UC has brilliant staff members that inspire students with their passion for teaching and leading research. The ability to work alongside and learn from these people has been an incredibly valuable part of my university education.’

James
Master of Science in Physics
PhD student, Imperial College, London

Graduate and postgraduate programmes

Qualification	Description	Requires	Start date	Duration
Bachelor of Science with Honours <i>BSc(Hons)</i>	The BSc(Hons) degree comprises one full-time year of coursework that includes a research component. See the subject chart on pages 49–50 .	BSc with a high level of attainment in appropriate subjects.	February or July	Full-time: 1 year Part-time: 2 years
Graduate Diploma in Science <i>GradDipSc</i>	This Diploma offers people who already hold a degree the opportunity to study science in-depth. It's designed for graduates seeking to qualify for other postgraduate qualifications in science, or to extend or upgrade their existing qualification/s. See pages 49–50 .	Any bachelor's degree. Acceptance into majors will depend on the standard and relevance of previous studies.	February or July	Full-time: 1 year Part-time: up to 5 years
Postgraduate Certificate in Antarctic Studies <i>PGCertAntaStud</i>	Students examine major scientific and environmental themes as well as contemporary issues facing Antarctica. It includes fieldwork in Antarctica.	Any bachelor's degree. Admission to this programme is by special application (due 9 April).	November	Full-time: 14 weeks
Postgraduate Certificate in Geospatial Science and Technology <i>PGCertGST</i>	The PGCertGST will equip current and future geospatial professionals with the advanced skills required for geospatial leadership roles in government, industry, and research.	Undergraduate degree or recognised professional discipline-specific experience.	February or July	Full-time: 6–12 months Part-time: 1 year
Postgraduate Certificate in Cognitive Behaviour Therapy <i>PGCertCBT*</i>	Cognitive Behaviour Therapy (CBT) is an evidence-based, psychologically informed talking therapy. It has proven effectiveness in treating substance misuse, and common mental health issues including depression and anxiety.	A bachelor's degree in psychology with a B Grade Point Average.	February	Part-time: 1–2 years
Postgraduate Diploma in Cognitive Behaviour Therapy <i>PGDipCBT*</i>		A bachelor's degree in psychology with a B Grade Point Average.	February	Part-time: 2–4 years
Postgraduate Certificate in Science <i>PGCertSc</i>	This provides a pathway qualification into further PG study eg, PGDipSc, BSc(Hons). It also provides a more accessible professional development qualification for those with work commitments. See pages 49–50 .	Bachelor of Science or equivalent degree with relevant background study.	February or July	Full-time: 6 months Part-time: 2 years
Postgraduate Diploma in Applied Data Science <i>PGDipADS</i>	Applied Data Science caters for students who wish to build their data science capabilities and combine these with the skills and knowledge acquired from previous studies. This can add to employability and career prospects.	A degree with a high level of attainment in appropriate subjects.	February or July	Full-time: 1 year Part-time: up to 4 years
Postgraduate Diploma in Clinical Psychology <i>PGDipClinPsc</i>	Professional qualification in Clinical Psychology. Selection for the course is competitive: a maximum of 12 people are selected each year.	MA, MSc, or PhD in Psychology, or BA(Hons) or BSc(Hons) in Psychology. Application due 20 September .	February	2 years of coursework and at least 1 year of practical work experience
Postgraduate Diploma in Geospatial Science and Technology <i>PGDipGST</i>	The PGDipGST will equip current and future geospatial professionals with the advanced skills required for geospatial leadership roles in government, industry, and research.	Undergraduate degree or recognised professional discipline-specific experience.	February or July	Full-time: 1 year Part-time: 2 years
Postgraduate Diploma in Science <i>PGDipSc</i>	Students must have completed a BSc degree. The precise prerequisites vary for each subject, but normally are good grades in 300-level courses. Courses are selected from a range of subject options — see pages 49–50 .	BSc or other bachelor's degree and approved undergraduate science courses.	February or July	Full-time: 1 year Part-time: up to 5 years
Postgraduate Diploma in Water Resource Management <i>PGDipWaterRM</i>	Prepares graduates for a professional career in water resource management and development of innovative and effective methods for the sustainable management of water in Aotearoa New Zealand and internationally.	Relevant bachelor's degree or relevant professional experience in the field.	February or July	Full-time: 1 year Part-time: 2 years
Master of Antarctic Studies <i>MAntaStud</i>	This degree provides a one-year, fast-track qualification. Combining fieldwork in Antarctica over summer, additional coursework, and an Antarctic-related research dissertation, students gain a 360-degree view of Antarctic issues. Ideal for careers requiring a solid background in Antarctic science or policy.	PGCertAntaStud or evidence of ability to complete advanced level academic study.	February** or November	Full-time: 1 year Part-time: 3 years

* Subject to Te Pūkai Tara | Universities New Zealand CUAP approval.

** February for students who have already completed the Postgraduate Certificate in Antarctic Studies.

Graduate and postgraduate programmes (continued)

Qualification	Description	Requires	Start date	Duration
Master of Applied Data Science <i>MADS</i>	This is for students who wish to build their data science capabilities and combine these with the skills and knowledge acquired from previous studies. This can add to employability and career prospects.	A degree with a high level of attainment in appropriate subjects.	February or July	Full-time: 1 year Part-time: 3 years
Master of Disaster Risk and Resilience <i>MDRR</i>	This Professional Master's degree provides an introduction to a rapidly evolving interdisciplinary field. Students will gain an understanding of current disaster risk and resilience research and practice fields; disaster risk drivers, risk communication, and disaster risk reduction strategies; and disaster resilience-building theory and practices. See more on page 48 .	A bachelor's degree which is relevant to Disaster Risk and Resilience, normally with a B grade average or higher in the final year university degree.	February or July	Full-time: 1 year Part-time: 3 years
Master of Financial Engineering <i>MFEng</i>	Cross-disciplinary, highly technical training of postgraduates for a career as a quantitative analyst in the global finance industry. Focuses on developing and designing financial products, investment strategies, as well as developing regulatory frameworks. See more on page 48 .	Any bachelor's degree (including some Statistics, Mathematics, and Finance courses or completion of a qualifying course).	February	Full-time: 1 year Part-time: 3 years
Master of Spatial Analysis for Public Health <i>MSAPH</i>	This will provide students with the skills, knowledge, and competencies to undertake spatial analysis roles within a wide range of health organisations, and will provide a solid foundation for further moving into senior spatial analysis roles within Aotearoa New Zealand and internationally.	A bachelor's degree and some basic prior experience/training in Statistics, programming (eg, R or Python) and GIS is required to enter this programme.	February	Full-time: 12–18 months Part-time: 2–3 years
Master of Science <i>MSc</i>	The MSc normally consists of coursework and a thesis. Students who have qualified for the equivalent of a BSc(Hons) or PGDipSc with appropriate grades in the subject may be admitted to the MSc by thesis-only in that subject. See the subject list on pages 49–50 .	BSc, BSc(Hons), PGDipSc, PGDipEngGeol, MDRR, or any bachelor's degree and a qualifying programme. Child and Family Psychology has other criteria, contact the School of Health Sciences.	February or July	Full-time: 1–2 years Part-time: up to 4 years
Master of Urban Resilience and Renewal <i>MURR</i>	This Master's has a unique focus on how communities respond to challenges that cities are facing around the world. Students will engage with community groups and local government through coursework and a research project. See more on page 48 .	Relevant bachelor's degree eg, Geography, Environmental Science, Sociology.	February	Full-time: 1 year Part-time: up to 3 years
Master of Water Resource Management <i>MWaterRM</i>	This degree will help graduates to develop innovative and effective methods for the sustainable management of this critical resource in Aotearoa and internationally.	PGDipWaterRM or relevant bachelor's degree.	February or July	Full-time: 1–2 years Part-time: up to 4 years
Professional Master of Computer Science <i>PMCS*</i>	The PMCS is an application-focussed programme providing advanced computer science theory and practice.	A BSc degree in computer science or equivalent in relevant computing discipline.	February	Full-time: 1 year Part-time: up to 3 years
Professional Master of Engineering Geology <i>PMEG</i>	The only programme of its kind in Australasia where students will focus on applying geological expertise to engineering projects.	BSc in Geology or Earth Sciences, or BE(Hons) in Civil Engineering or Natural Resources Engineering, or relevant professional work experience.	February	Full-time: 1 year
Professional Master of Geospatial Science and Technology <i>PMGST</i>	This taught Master's degree will equip current and future geospatial professionals with the advanced skills required for geospatial leadership roles in government, industry, and research.	Relevant undergraduate degree, or at least 3 years' professional experience.	February or July	Full-time: 1 year Part-time: 3 years
Doctor of Philosophy <i>PhD</i>	The PhD comprises advanced research presented in a thesis. For more details, see page 10 .	Bachelor's degree with first or second-class division 1 honours, or master's degree with first or second-class division 1 honours, or equivalent.	Beginning of any month	Full-time: 3–4 years Part-time: 4.5–6 years

* Subject to Te Pūkai Tara | Universities New Zealand CUAP approval.

Tauwhiro Hapori: Postgraduate studies in Social Work



The Social Work programme at UC is one of Aotearoa New Zealand's longest established Social Work programmes and offers qualifications which are internationally recognised.

The range of programmes and flexible study options allow graduates already employed as social workers, or those wishing to gain a first professional Social Work qualification, to undertake further studies. Postgraduates acquire skills which enable them to provide leadership in social work practice, policy development, research, education and training, and management.

Staff remain involved in their particular areas of practice. Postgraduate students benefit from the programme's commitment to interactive teaching styles as well as access to dedicated computer facilities and office space.

Research

The programme has developed strong links between research, teaching, and practice, and enjoys close relations with social work agencies in the community. Research interests cover a wide range of social work issues including interpersonal violence, indigenous cross-cultural theory and practice, policy and practice on ageing, community development, social policy, and clinical social work.

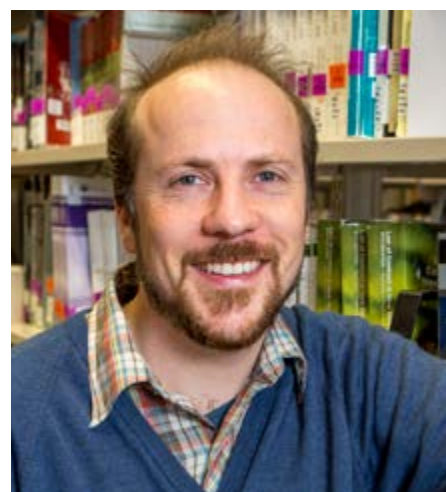
Career opportunities

Social workers are employed in both the public and private sectors, providing direct services to children, families, the aged, people who have committed offences, and people with disabilities, and indirect services in social sector planning, policy development, and research.

Graduates work in a wide variety of jobs, including as community development workers, therapists, youth workers, field workers, counsellors, case managers, probation officers, iwi social workers, hospital social workers, service coordinators, policy analysts, and researchers.

Social Work graduates are highly sought after internationally, especially in the United Kingdom and Australia.

www.canterbury.ac.nz/careers



'This training is further reaching than simply vocational, equipping me with skills and knowledge that give me greater insight into my own life experiences while also allowing me to better contribute within my own community.'

Tom

Bachelor of Fine Arts with Honours in Sculpture
Master of Social Work (Applied)

Te Rāngai Toi Tangata | College of Arts
T: +64 3 369 3377
E: artsdegreeadvice@canterbury.ac.nz
www.canterbury.ac.nz/arts

Postgraduate programmes

Qualification	Description	Requires	Start date	Duration
Master of Social Work (Applied) <i>MSW(App)</i>	Students with an approved social science degree can complete a recognised professional qualification over two years. The programmes can be completed on a part-time basis, which offers some flexibility to those with family or employment commitments.	Any bachelor's degree with a B average in 300-level courses, and courses in social research and human development, or relevant practice experience, or qualifying programme. Limited entry, applications due 30 September .	February	Full-time: 2 years Part-time: up to 6 years
Master of Social Work (by thesis) <i>MSW</i>	Aimed at practitioners with specialist practice, supervisory, management, or policy analysis and development responsibilities. The programme of study and research can be designed to meet each student's professional needs and interests. Students must complete a thesis.	BSW with first or second-class division 1 honours; or any bachelor's degree, plus either a Graduate Diploma in Social Work (if conferred before 2009) or Postgraduate Diploma in Social Work with B+ average.	Beginning of any month*	Full-time: 1 year Part-time: up to 3 years
Doctor of Philosophy majoring in Social Work <i>PhD</i>	The PhD comprises advanced research presented in a thesis. For more details of PhD study, see page 10 .	Bachelor's degree with first or second-class division 1 honours, or master's degree with first or second-class division 1 honours, or equivalent.	Beginning of any month	Full-time: 3–4 years Part-time: 4.5–6 years

* December and January starts are not recommended.



‘Applied Social work is diverse. We familiarise ourselves about tangata whenua – their self-determination, their culture, traditions, values and most importantly their history and Tiriti o Waitangi.’

Jasvin
Master of Social Work (Applied)

Hauora Reo: Postgraduate studies in Speech and Hearing



UC's staff are internationally recognised for their research in communication sciences and disorders.

Te Kura Mahi ā-Hirikapo | School of Psychology, Speech and Hearing serves Aotearoa New Zealand and the world through excellence and innovation in scholarship, teaching, and public service. Students are educated and challenged to excel in professional practice and research related to disorders of hearing, speech, language, and swallowing.

Staff provide a national resource centre for information and continuing professional education in the field. Each year a number of distinguished scholars, including Erskine Fellows, come from around the world to lecture and conduct seminars at UC.

Research

Te Kura Mahi ā-Hirikapo | School of Psychology, Speech and Hearing has three research laboratories; Te Puna Whakaora Rehu Ohotata Rose Centre for Stroke Recovery, UC Speech Labs, and the Child Language Centre. Many of our researchers are part of the multidisciplinary Te Kāhui Roro Reo | New Zealand Institute of Language, Brain and Behaviour, based at UC.

Resources and partnerships

- The School has four on-campus laboratories featuring state-of-the-art electronic and assessment equipment.
- The Department is a partner in the UC-hosted Te Kāhui Roro Reo | New Zealand Institute of Language, Brain and Behaviour.
- Te Puna Whakaora Rehu Ohotata | Rose Centre for Stroke Recovery, and research at St George's Medical Centre, is a UC initiative to link research with the clinical health community.
- Postgraduate students participate in clinics at public hospitals, schools, and centres, providing a multitude of options for working with clients of all ages with speech and hearing disabilities.

Career opportunities

The speech-language therapy profession offers a range of career opportunities. Graduates are highly employable as clinicians both in Aotearoa and overseas.

You can work with people in a research laboratory, a private clinic, or a government agency. You can work with children who experience language delays, or with elderly stroke patients in a large hospital or nursing home. You can be an entrepreneur, developing and marketing new communication devices and tests, or build your own private practice. You can teach at a university, or conduct research in a scientific laboratory.

www.canterbury.ac.nz/careers

Te Kura Mahi ā-Hirikapo | School of Psychology, Speech and Hearing

T: +64 3 369 4333

E: speech-hearing-admin@canterbury.ac.nz
www.canterbury.ac.nz/science/schools-and-departments/psyc-speech-hear

Graduate and postgraduate programmes

Qualification	Description	Requires	Start date	Duration
Master of Audiology <i>MAud</i>	The MAud includes coursework, and clinical and research experiences. Coursework focuses on training professional clinical audiologists with emphasis on the development of clinical and administrative skills relating to the practice of audiology.	BSLP(Hons), BA, BSc; other bachelor's degrees also considered. A special application is required; applications close on 1 October .*	February	Full-time: 2 years Part-time: up to 4 years
Master of Science majoring in Speech and Language Sciences <i>MSc</i>	The MSc includes independent research, presented in a thesis, which is completed concurrently with one advanced course in either clinical management or research design. A non-clinical, research-only pathway is available to students with a 4-year undergraduate degree in a related discipline. Prepares graduates for clinical supervision and/or research, for entry to a doctorate programme, or to assume leadership roles.	BSLP(Hons) or other qualifying programme. Liaise with department postgraduate coordinators to find out more about GPA requirements. Applications close on 1 November .	February	Full-time: 1–2 years
Master of Speech and Language Pathology <i>MSLP</i>	The MSLP offers students with a degree in Linguistics, Education, Psychology, Science, Health Sciences, or related degrees the opportunity to enter the speech-language therapy profession. This hands-on programme includes experiential clinical practice.	Any bachelor's or master's degree (not suitable for those graduates with a degree specialising in speech and language therapy/pathology). A special application is required; applications close on 1 October .*	February	Full-time: 1–2 years Part-time: up to 4 years
Doctor of Philosophy majoring in Audiology or Speech and Language Sciences <i>PhD</i>	See page 10 for more information on PhDs.	Bachelor's degree with first-class or second-class division 1 honours or master's degree with first or second-class division 1 honours, or equivalent.	Beginning of any month	Full-time: 3–4 years Part-time: 5–6 years

* NOTE: Applications close October 1st, but those received before August 1st may be considered for early admission. Final application results may not be available until November. If you are also applying for admission to the university, please ensure you apply several weeks before this date to allow time for your application to be processed.



'I really enjoyed my time at UC. I have learned a lot from the course itself and have made lots of friends during my time there. The environment at UC enabled students to maximise their learning capacity and made international students like me feel almost like home.'

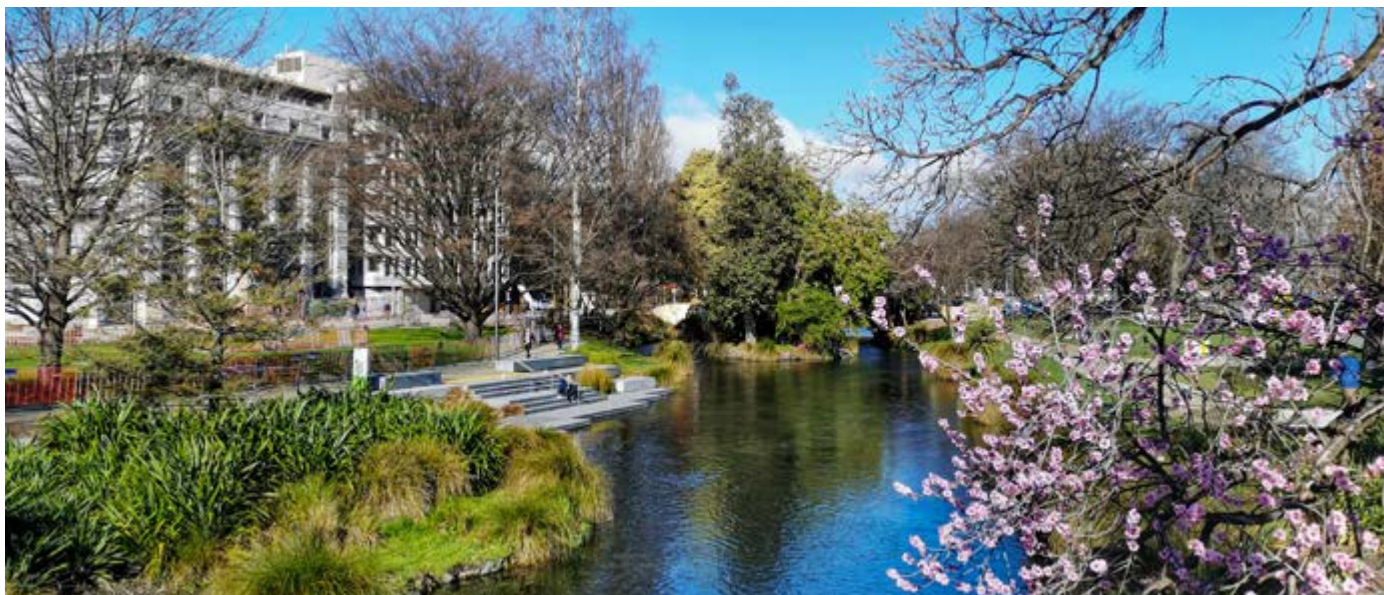
Nguyen

Master of Speech and Language Pathology
Speech Language Therapist, Vietnam



Lifestyle and support

The Ōtautahi Christchurch lifestyle



Ōtautahi Christchurch offers a huge range of recreational activities.

In the middle of Te Waipounamu South Island, and located in the province of Waitaha Canterbury, Ōtautahi is both a destination for, and a gateway to, all the fun and adventure the region has to offer.

Vibrant entertainment options

Ōtautahi is ideal for those who enjoy a variety of things to do — from art exhibitions and cultural celebrations to sports events and music festivals.

In 2019, Ōtautahi Christchurch topped CNN's list of 19 places to visit — describing the city, its buildings, and culture as “elegant”, “gorgeous”, “colourful”, and “dynamic”.

There are over 900 restaurants, cafés, and bars to enjoy, and the UC campus is just minutes away from a number of these.

The Crossing, (Ōtautahi Christchurch's newest retail shopping precinct), The Tannery, and Riccarton Westfield Mall (the largest shopping mall in Te Waipounamu South Island) are popular for food and entertainment.

Tūranga, Ōtautahi Christchurch's central library, is Te Waipounamu South Island's largest, most modern library, and houses more than 180,000 books and printed items. It features the country's biggest digital “touchwall”.

Unbeatable outdoor lifestyle

Ōtautahi is a recreational hub with over 1,000 parks and gardens. Hagley Park, located near the heart of central Ōtautahi, is the largest open space in the city. The park has Botanical Gardens, public sports fields, tennis courts, and even a public golf course.

The location of Ōtautahi on the coast makes it a perfect recreational hub — pristine swimming and surfing beaches are close by, and Ngā Kōhatu Whakarekareka o Tamatea Pōkai Whenua Port Hills are popular for mountain biking, walking, and rock climbing.

The Christchurch Adventure Park has four ziplines, and an epic 120 kilometres of trails. It is the world's first lift accessed, all-season mountain biking facility, and is Aotearoa New Zealand's highest and longest zipline.

The city is close to Akaroa, Aotearoa's original French settlement, the seaside town of Kaikōura, and the thermal hot pools of Hanmer Springs. Skiing and snowboarding can be enjoyed at nine ski fields within a two hour drive of the city, in the majestic Kā Tiritiri-o-te-moana Southern Alps.

Getting around

For information on all the different options for getting to and from UC, and around the city, see www.canterbury.ac.nz/life/sustainability/sustainable-operations/transport-options

Cycling is a cheap and convenient way to travel and is helped in Ōtautahi by the temperate climate, the flat terrain, and the many designated cycle paths.

On-campus facilities include secure bike stands, lockers, showers, bikes for hire, and free basic bike checks.

There are buses running every few minutes from bus stops beside campus. For bus route and timetable information, see www.metroinfo.co.nz

More information

www.christchurchnz.com
<https://neatplaces.co.nz/places/christchurch-canterbury>

Live in a residential community

UC has accommodation options to support you to succeed in your studies.

Apartments and houses

All our accommodation options offer a safe and supportive living/learning environment on campus. You will have your own fully furnished room and share kitchen/living, bathroom, and laundry facilities with other students of similar age and level of study. There are three options for students undertaking postgraduate study:

Hayashi

Hayashi offers a quieter living environment 15 minutes' walk from the Ilam campus. Each two-storey townhouse has a mixture of single and double rooms with a limited number of ensuite rooms and self-contained studio units for couples.

Ilam Apartments

With individual students of all ages, at all levels of study, and from all over the world, Ilam offers a large diverse community just 5 minutes' walk from the Ilam campus. There are three apartment types — Mānuka, Kōwhai, and Hīnau.

Sonoda Christchurch Campus

Located adjacent to Hayashi, Sonoda offers 110 single rooms in five-bedroom apartments for students beyond their first year of study. The hall is surrounded by Japanese-inspired landscaped grounds providing a peaceful environment to live and study.



Take a look inside

View our videos and 360 degree panoramas online

You can step inside rooms and facilities to have a closer look at accommodation options online.

www.canterbury.ac.nz/life/accommodation/halls/360-panoramas

Students with disabilities

UC is committed to assisting students with disabilities. If you have a specific requirement, please advise us in your application so we can ensure that your needs are met.

Couples and Families

If you are travelling with your partner and/or family, please refer to www.canterbury.ac.nz/life/accommodation/couples-and-families as accommodation on campus is very limited. It is likely that you will be required to source a room or property off campus.

Postgraduate Flexi Contract

If you are arriving outside standard semester dates (February–June or July–November), you can apply for a postgraduate flexi contract that offers a flexible arrival date for a 16 week minimum stay. Postgraduate flexi contracts are offered at a slightly higher weekly rate, but also offer a weekly payment plan.

www.canterbury.ac.nz/life/accommodation/postgrad

How to apply

An online application form is required, selecting either the 2021 Academic Year, 2021 Semester 1 only, or 2021 Postgraduate Flexi term. Academic Year applications are prioritised over Semester 1.

Couples and families may apply for 2021 Couples/Family Accommodation. Please check if you are required to provide a reference.

www.canterbury.ac.nz/life/accommodation/halls/apply

Homestay

Homestay is living with a local family in their home and provides you with your own fully furnished room and meals. Homestay is \$280 per week plus a one-off \$350 placement fee.

www.canterbury.ac.nz/life/accommodation/homestay-and-private-board

2021
He Arataki Nohonga
Accommodation Guide



Accommodation



See the 2021 UC Accommodation Guide at www.canterbury.ac.nz/publications/key-publications/get-started-at-uc/accommodation-guide

Private renting

Rent can range from \$338 per week for a two-bedroom house to \$900 per week for a five plus-bedroom house.*

Set up costs for an empty property include:

- 1–4 week's rent as bond.
- 1–2 week's rent in advance.
- Power and internet.
- Furniture and/or whiteware (if unfurnished).
- Contents/liability insurance.

Temporary accommodation is required on arrival as you must not sign for a room or property without viewing it personally.

For information on starting a tenancy, market rent, and rights and responsibilities, refer to www.tenancy.govt.nz

* Source: Tenancy Services.

Te Ratonga Nohonga Accommodation Services

T: +64 3 369 3569

E: accommodation@canterbury.ac.nz

www.canterbury.ac.nz/life/accommodation

Get all the support you need to succeed



UC is committed to helping you succeed in your studies by providing you with a wide range of support services.

Pastoral care

The Education (Pastoral Care of Domestic Tertiary Students) Interim Code of Practice 2019 came into force on 1 January 2020, to ensure that domestic tertiary students can succeed academically in a safe, healthy, and supportive learning environment.

For students and whānau, this means there are a number of processes UC must ensure are provided, and clear guidelines for review to ensure they are maintained. These include:

- a safe and supportive learning environment
- assistance for students to meet their basic needs
- physical and mental health of students
- progress and personal development of students, ākonga
- inclusive learning environment
- student voice

- a positive and supportive environment in student accommodation
- a supportive residential community
- accommodation plans, administration, and operational policies
- building facilities and services.

These processes will be monitored by an NZQA Code Administrator with clear referral lines for investigation on receiving a complaint of a potential breach.

www.nzqa.govt.nz/providers-partners/domestic-code-of-practice

Your support team

Atawhai Ākonga | Student Care

Student Care Advisors help you develop strategies to deal with personal, financial, academic, and wellbeing concerns while studying at UC.

www.canterbury.ac.nz/support

Akiaki Ākonga | Student Experience

The UC Mentoring programme can link you with a student mentor who will provide friendly support, and help you to adjust to campus life.

www.canterbury.ac.nz/support/get-support/new/mentoring-programmes

Te Pokapū Pūkenga Ako | Academic Skills Centre (ASC)

Take your writing and presenting to the next level to effectively communicate the depth and significance of your research. ASC is a free advisory service that can show you how at all stages of your postgraduate study.

www.canterbury.ac.nz/support/asc

Te Ratonga Whaikaha | Equity and Disability Service (EDS)

If you have a learning difficulty, mental health condition, physical impairment, or another condition that may affect your study, EDS offers specialised disability support.

www.canterbury.ac.nz/equity-disability

Ākonga Māori | Māori students

Te Waka Pākākano | Office of the AVC Māori, Pacific & Equity encourages all ākonga Māori to meet our team and find out how we can support you throughout your studies. We offer many events and workshops throughout the year for you to meet other ākonga and staff.

www.canterbury.ac.nz/support/akonga-maori



Pasifika students

Whatever your Pasifika heritage, UC has a range of services, including the Pacific Development Team who can help you with almost anything. Throughout the year there are plenty of Pasifika events to get you engaged. We also have a mentoring programme and PASS tutoring programme to provide support for Pasifika students.

www.canterbury.ac.nz/support/pasifika

Rainbow Diversity Support



UC's Rainbow Coordinator is here to support you and your whānau. We can also connect you with other rainbow students.

www.canterbury.ac.nz/support/get-support/lgbtqi

Your students' associations

Te Rōpū Ākonga o Te Whare Wānanga o Waitaha | University of Canterbury Students' Association (UCSA)

Te Rōpū Ākonga o UC | University of Canterbury Students' Association (UCSA) is a not-for-profit organisation dedicated to helping ākonga succeed and belong at UC.

Services include advocacy and welfare, a subsidised dental scheme, early learning centres, club support, events, media, and even food outlets on campus.

www.ucsa.org.nz
www.facebook.com/theUCSA
www.instagram.com/ucsa_nz

UC PGSA

The University of Canterbury Postgraduate Students' Association (PGSA) is the only UCSA-affiliated club run 'by postgrads for postgrads'.

The club provides a voice and social support for all postgraduate students. UC PGSA organises social events to encourage professional and social interaction with a wide variety of interdisciplinary postgraduate members, supervisors, academics, and future employers. It also provides opportunities for peer guidance, support, advocacy, communication, and networking.

UC PGSA supports the Postgraduate Office's academic and professional development seminars and lectures. Social events run by UC PGSA include meet-ups, quiz nights, trips away, and an annual postgraduate ball.

www.ucpgsa.org

Stay healthy and fit

Staying active and well is a big part of success and enjoyment at university.

Te Whare Hauora o UC UC Health Centre

A full range of medical and counselling services support your medical, physical, and mental health needs. We also offer a variety of specialty clinics – lifestyle management, smoking cessation, physiotherapy, and day duty clinics for urgent health needs.

www.canterbury.ac.nz/healthcentre

Te Ratonga Hākinakina UC Rec & Sport

Make friends, stay active, and be well with activities offered by the team at UC Rec & Sport. Play social sport, join the RecCentre gym, or just drop-in and shoot some hoops to unwind. Sign up for your free membership* and start exploring!

* Basic membership is free to all students, and is paid for by your student levy.

www.canterbury.ac.nz/ucreccentre

Need childcare?

Both UC and the UCSA run early learning centres to support students with families.

www.canterbury.ac.nz/earlychildhood
www.ucsa.org.nz/student-support

UC support services

www.canterbury.ac.nz/support

Create a career that works for you

Postgraduate study can facilitate professional attributes of value in the workplace, such as specialist skills, applied experience, research capability, critical thinking, and higher knowledge.

There are many career benefits from attaining a further qualification, such as entry into some professional occupations, and in some cases higher starting salary/progression rates.

For graduates who wish to fast-track to a specific career straight after their first degree or change occupations further down the track, graduate or postgraduate study could be the ticket to a career that fits your interests, experience, ambitions, and life goals.

Useful starter information

UC has plenty of resources available to you before you commit to further study, and in determining your desired career path.

- Visit www.canterbury.ac.nz/careers to make an informed career decision.
- Read what UC students have gone on to achieve in their studies, lives, and careers. www.canterbury.ac.nz/student-profiles
- Plan your career destination on the Careers NZ website. www.careers.govt.nz

Applied learning experiences

There are many opportunities for students to gain work experience and apply skills and knowledge during their course of study, such as internships, clinical and teaching practice, practical and professional work placements, field work, and industry and community projects.

www.canterbury.ac.nz/courses

Talk to the professionals

Te Rōpū Rapuara | UC Careers are professionally qualified career consultants and graduate recruitment specialists. They provide:

- careers information, advice, and guidance
- assistance in making informed decisions
- help with your job search.



Consultants work with groups and are available for individual consultations.

With over 2,000 employer connections, UC hosts regular employer information events and career fairs.

www.canterbury.ac.nz/careers

Student work opportunities

Many students work part-time while studying.

- UC Careers advertises a range of relevant student jobs and internships, part or full-time, paid and voluntary.
- StudentJobs@UC lists jobs on campus.
- Te Rōpū Rapu Mahi Tauira | Student Job Search offers an online employment service (even over the summer holidays before you start at UC). www.sjs.co.nz

Tutoring and research

Some departments employ postgraduate students (usually master's or doctoral students) as part-time tutors or research assistants. Contact the department/s as early as possible to discuss such opportunities and look out for adverts on StudentJobs@UC at www.canterbury.ac.nz/careers

International students

Students who want to stay and work in Aotearoa New Zealand after they have completed their studies may be eligible for a Post-study work visa. These are subject to conditions.

Please refer to www.immigration.govt.nz

Make your experience count

Get a competitive edge with UC's unique Co-curricular Record (CCR), which recognises your participation in pre-approved activities outside the classroom. This demonstrates to future employers that you have been involved with experiences that are not only academic at university.

Activities include working for UC, volunteering, leading a club, or being a class rep.

www.canterbury.ac.nz/life/co-curricular-record-CCR

Te Rōpū Rapuara | UC Careers

T: +64 3 369 2559

E: careers@canterbury.ac.nz

www.canterbury.ac.nz/careers

Apply and enrol



How do I apply and enrol?



Am I eligible to apply?

There are usually set criteria that you need to meet before you can enrol in postgraduate and graduate qualifications at UC. In most cases, this requires evidence of you having completed an undergraduate degree.

<https://checkwhatyouneed.canterbury.ac.nz>

Domestic students

If you have a degree from another Aotearoa New Zealand university and you are applying for a master's degree or postgraduate diploma, please send an original academic transcript to the relevant Student Advisor or Academic Manager from that school/college and attach a letter indicating which qualification you intend to enrol for.

In addition, a number of programmes require a separate application (see table on **page 69**).

International students

If you have a degree from a university outside Aotearoa New Zealand, see **page 66** for more information, including when to apply.

Applying for a PhD

Students applying for a PhD must hold either a New Zealand honours degree (that includes a research project) with first-class or second-class division 1 honours, or a master's degree to this standard, or have equivalent academic qualifications from an overseas university. Students should identify and meet either by videolink (eg, Skype) or in person with a potential supervisor before applying.

www.canterbury.ac.nz/enrol/doctoral

Enrol for a PhD

Prospective PhD students who have received Admission to UC can complete their enrolment at any time in person at Enrolments, Student Services, Level 1 Matariki.

Enrol at UC

You can apply to enrol online. Simply go online to myUC, register your details with us and then follow the online prompts.

<https://myuc.canterbury.ac.nz>

For most qualifications, you will be able to select your desired courses online from **October** and the deadline for domestic students is **December**. The UC Contact Centre can help you with any enquiries: phone 0800 VARSITY (827 748).

All international students must complete enrolment on campus, unless studying a programme that is 'online to on campus'. Please go to **page 66** for details on completing your enrolment.

Master's degree by thesis only

Students should follow UC's application process and apply online with myUC. Students typically enrol for Semester 1 or Semester 2.

Some programmes will have different enrolment dates and application dates.

Please seek advice from your college or school.

Note: Prospective full-time students need to obtain necessary approvals for their thesis proposal within the first two months of enrolling. Please contact the relevant college or go to www.canterbury.ac.nz/postgraduate/masters-study



What fees do I need to pay?

At UC, there are two types of fees — tuition and non-tuition. To work out your total tuition fee for the year if you are a domestic student, add up the fees for all the individual courses you are taking.

If you are an international student, you will pay a set programme fee, you are required to pay a set programme fee to UC before you arrive in New Zealand.

www.canterbury.ac.nz/get-started/fees/int-postgrad-fees

Domestic student fees must be paid at enrolment, either by direct payment, with a Student Loan, or a mix of both. For details of your payment options, go to www.canterbury.ac.nz/get-started/fees/pay-your-fees

For a domestic student to conduct postgraduate study in 2020, the following prices applied:

- a postgraduate 'taught' course was from \$942 for a 15-point paper (for Arts, Social Science, and some Education courses) to \$1,102 (for Engineering and Forestry courses).
- a postgraduate research course was from \$878 (for Arts, Social Science, and some Education courses) to \$1,057 (for Engineering and Forestry courses).
- full-time 'taught' programmes of study (coursework-based) was from \$7,535–\$8,814.
- research-based master's programmes and doctoral studies was from \$7,022–\$8,459.

To see the fees for individual courses, go to www.canterbury.ac.nz/courses

For a guide to fees by qualification, see www.canterbury.ac.nz/get-started/fees

The qualification fees are based on 120 points. Fees may change from year to year. All amounts are in NZ dollars. Thesis fees may differ (your actual tuition fee will depend on the mix of courses you take). Some special programmes have different fees.

Domestic students include citizens of New Zealand, citizens of Australia, holders of a New Zealand residence class visa, and permanent residents of Australia, Cook Islands, Niue, and Tokelau.

Non-tuition fees and other costs

Other costs you may need to allow for include:

- Student Services Levy (compulsory non-tuition fee)
- textbooks and stationery
- course-related costs eg, photocopying and printing
- optional extras eg, annual parking fee
- visa and insurance charges may also apply for international students
- accommodation costs (see [page 59](#)).

T: +64 3 369 3999
E: info@canterbury.ac.nz
www.canterbury.ac.nz/enrol



'I use the skills I learned in my honours and master's years every day. The work I do is exciting, challenging, and makes a real difference.'

Alice

Master of Arts in Political Science and International Relations
Associate, Allen + Clarke Policy and Regulatory Specialists Ltd

Information for international students



International students are highly valued at UC, joining more than 100 nationalities on campus.

UC's learning environment gives students from diverse cultures the skills to work in today's global society and contribute to the wellbeing of their communities.

Given that international students are the majority of UC's doctoral students, this represents a little 'United Nations' dedicated to research and is testimony to UC's reputation as an international research destination. There are many benefits to studying a PhD in Aotearoa New Zealand. See [page 10](#).

International Code of practice

The Education (Pastoral Care of International Students) Code of Practice 2016 is designed to guide institutions in their practice, and protect international students when they study in Aotearoa. UC is a signatory to the Code, and is required to meet the standards set by the Aotearoa New Zealand government. Read the full code of practice at www.nzqa.govt.nz/providers-partners/education-code-of-practice

The first thing you should do if you have concerns with your UC experience is to contact Atawhai Ākonga | Student Care, Te Rōpū Ākonga o Te Whare Wānanga o Waitaha | University of Canterbury Students' Association (UCSA), or the

University Grievance Coordinator to discuss your concerns and options.

If your concerns regarding pastoral care are not resolved by UC internal grievance procedures, you can get help from NZQA, a government organisation. They provide an independent assessment of your complaint and will either investigate your concerns or advise what you can do next. Contact NZQA at www.nzqa.govt.nz, email risk@nzqa.govt.nz, or call 0800 697 296. If your concern is about a financial or contractual dispute, you can contact Student Complaints at www.istudent.org.nz or 0800 00 66 75. This is a free, independent service for full-fee paying international students.

www.canterbury.ac.nz/support/code

Applying for admission

Good grades in an undergraduate degree from an internationally recognised university are required for admission at postgraduate level. You may also need to undertake a transitional or qualifying course before being admitted. You will require a satisfactory level of proficiency in the English language. Students applying for a PhD require a research-focused honours or master's degree with excellent grades.

You can check admission requirements for postgraduate qualifications at https://checkwhatyouneed.canterbury.ac.nz

What to submit

After choosing your area of study, the next step is to apply for admission. You need to submit:

- an online application for admission at <https://myuc.canterbury.ac.nz>

Note: Many graduate and postgraduate programmes have specific application requirements. See [page 69](#) and the relevant department website for details.

- your graduation certificates and academic transcripts for all previous university study. If you submit your documents electronically you will need to provide originals or certified/notarised true copies later to verify your admission.
- evidence of English language competence.
- a copy of your curriculum vitae (CV) (required for some qualifications).
- research students need to send details of their proposed area of research and of any previous research and publications.

Note: previous correspondence with an academic staff member regarding possible supervision is mandatory before applying for admission.

If your application is successful, an email will contain an Offer of Place as well as details of fees and payment methods.

www.canterbury.ac.nz/enrol

Recommended application dates

Students applying with international university qualifications should apply as early as possible. If you are in New Zealand, we recommend that you apply before **1 November** for Semester 1 (February start) and before **1 April** for Semester 2 (July start). Research and postgraduate taught students applying from overseas should apply at least six months before the planned start date.



Student visa

International students who study in Aotearoa New Zealand for longer than three months must have a student visa. We strongly recommend that you seek advice before travelling and get your student visa before leaving your home country. www.immigration.govt.nz

If you are already in Aotearoa New Zealand on a student visa, you may be able to renew it on campus. www.canterbury.ac.nz/international/how-do-i-enrol/prepare-for-your-move-to-nz/visas-and-immigration

Applying to enrol

If you are granted admission to UC, you will be emailed an Offer of Place letter, and details of how to apply to enrol in your courses. We recommend that you add your courses well before the course start date.

Limited entry courses

Some courses are 'limited entry', which means that there is a limit on how many places are available. Most of these courses require a separate application form in addition to the standard application for admission and application to enrol. Application due dates can be found on [page 69](#) and at www.canterbury.ac.nz/enrol/special

In-person or online enrolment

All international students will complete their enrolment 'in person' in Christchurch or 'online' if residing outside Aotearoa New Zealand.

In-person enrolment will take place in the week prior to the commencement of your semester.

www.canterbury.ac.nz/enrol/international/inperson

Master's by thesis and PhD students can enrol at the start of any month, with the approval of their supervisor(s) and department, either at the Student Services Centre, Level 1, Matariki or online if you are not residing in New Zealand.

Note: Some postgraduate programmes have other start dates. See www.canterbury.ac.nz/courses for qualification details.

Financial assistance

International students are eligible to apply for a number of scholarships. See [page 68](#) for more.

It is possible for international students to work while they are studying. Conditions apply.

www.immigration.govt.nz/new-zealand-visas/options/study/considering-study-in-new-zealand

International Prospectus

UC's International Prospectus can advise you on:

- English language requirements
- how to gain admission to UC
- visas, medical, and travel insurance
- on-campus enrolment and orientation
- Aotearoa New Zealand as a place to live and study.

www.canterbury.ac.nz/publications/key-publications/international-students/international-prospectus



Te Tari Hononga ki Tāwāhi
International Relationships Office
 T: +64 3 369 4494
 E: iro@canterbury.ac.nz
www.canterbury.ac.nz/international

How can I finance my studies?

Scholarships

Scholarships are an excellent way of funding postgraduate study. It is best to start looking for funding early because it may take time to find out if your application has been successful.

Ask student advisors in your department or school for information on scholarships for your subject area, or visit the scholarships website.

International students are eligible to apply for the UC Master's and Doctoral Scholarships, but master's students will be required to fund the difference between the domestic fees met by the scholarship and their international tuition fees.

The UC Doctoral and Master's Scholarships may be paid on a pro rata basis for part-time study.

Funding for scholarships comes from UC Trusts, UC Foundation, and the support of many generous organisations and individual donors.

www.canterbury.ac.nz/scholarships

Preparing your application

Each scholarship has different eligibility criteria (eg, subject/course, level, citizenship, school, region) and may require different supporting documentation. To apply, first review the criteria and complete the appropriate online form. You can apply for more than one scholarship as it is often possible to hold more than one at a time. We recommend you apply early as deadlines are strictly adhered to.

Other scholarships available

- Te Pūkai Tara | Universities New Zealand administers a number of scholarships. www.universitiesnz.ac.nz
- New Zealand Scholarships assist students from developing countries. www.mfat.govt.nz/en/aid-and-development/new-zealand-government-scholarships
- Education New Zealand provide research scholarships. <https://enz.govt.nz/funding>
- Industry sponsored awards — contact the relevant College, the Scholarships Office, or UC CareerHub. www.careerhub.canterbury.ac.nz

Student Loans

New Zealand citizens or holders of a New Zealand residence class visa may be eligible for a Student Loan. You may be able to borrow the amount of your tuition fees plus any other compulsory fees, funds for course-related costs, and a weekly allowance for living costs. www.studylink.govt.nz

UC scholarships and awards

Scholarship	Value	Tenure (full-time)
Doctoral level		
Brownlie Scholarship — for the top UC Doctoral Scholarship applicant	\$26,000 a year plus payment of tuition fees at NZ domestic rate	Up to 3 years
Roper Scholarship in Science — for the top UC Doctoral Scholarship Science applicant	\$26,000 a year plus payment of tuition fees at NZ domestic rate	Up to 3 years
William and Ina Cartwright Scholarship — for the top UC Doctoral Education applicant	\$26,000 a year plus payment of tuition fees at NZ domestic rate	Up to 3 years
UC Doctoral Scholarships — up to 65 available each year	\$21,000 a year plus payment of tuition fees at NZ domestic rate	Up to 3 years
Ngāi Tahu Research Centre Doctoral Scholarships — up to 3 available each year	www.canterbury.ac.nz/scholarships	Up to 3 years
Ngata Centenary Doctoral Scholarship — for Māori students	\$21,000 a year plus payment of tuition fees at NZ domestic rate	Up to 3 years
UC Doctoral Scholarship — for students with disabilities	\$21,000 a year plus payment of tuition fees at NZ domestic rate	Up to 4 years
UC Matariki Doctoral Scholarship — for Māori students	\$21,000 a year plus payment of tuition fees at NZ domestic rate	Up to 3 years
UC Pasifika Doctoral Scholarship — for students of Pasifika heritage	\$21,000 a year plus payment of tuition fees at NZ domestic rate	Up to 3 years
Master's level		
UC Master's Scholarships — up to 25 available each year	Payment of tuition fees at NZ domestic rate	1 year
Ngāi Tahu Research Centre Postgraduate Scholarships — 2 available each year for master's degrees	www.canterbury.ac.nz/scholarships	1 year
UC Master's Scholarship — for students with disabilities	Payment of tuition fees at NZ domestic rate	Up to 2 years
Orion Master's Energy Scholarship	\$16,500	1 year
Graduate Women Canterbury (Inc.) Trust Board Scholarships — for honours, master's, and doctoral students	www.canterbury.ac.nz/scholarships	Varies
F A Hayek Scholarship in Economics or Political Science — at honours or master's level	\$16,500	1 year
CWF Hamilton and Co Ltd Master's Scholarship in Mechanical Engineering	\$16,500	1 year
Tait Communications Research Scholarship — at master's level	\$15,000	1 year

Note: closing dates vary between scholarships. We recommend you refer to the UC scholarships website for the most up-to-date information, and for external scholarship opportunities. The information contained in this table is accurate at the time of printing but is subject to change.

Paid work

For UC work opportunities and online employment listings, see Student work opportunities on [page 57](#).

UC Scholarships Office

T: +64 369 4900

E: scholarships@canterbury.ac.nz

www.canterbury.ac.nz/get-started/scholarships

Important dates

2020

August | Whā

- 1 Applications for Accommodation open for a February 2021 start

September | Rima

- 24 Applications for Accommodation due for a February 2021 start

October | Ono

- 1 Applications to enrol for 2021 open
From 1 October
Accommodation offers are sent out for a February 2021 start

- 15 Some UC Master's and Doctoral Scholarship applications due

November | Whitu

- 9 2020/21 Summer Programme starts

2021

January | Iwa

- 7 Last date for continuing UC domestic students to apply to enrol

February | Kahuru

- 19 Herea tō waka | UC Orientation Day
22 Semester 1 lectures start, and last day to enrol for Semester 1 courses

April | Kai-te-haere

- 2–25 Semester 1 break

May | Mātahi-ā-te-tau

- 1 Applications for Accommodation due for a July 2021 start
15 Some UC Master's and Doctoral Scholarship applications due

June | Māruaroa

- 4 Semester 1 lectures end
14–26 Mid-year examinations and tests

July | Toru

- 19 Semester 2 lectures start, and last day to enrol for Semester 2 courses

August | Whā

- 30–10 September | Rima
Semester 2 break

October | Ono

- 22 Semester 2 lectures end

November | Whitu

- 1–13 End of year examinations
15 2021/22 Summer Programme starts

Note that Teacher Education programmes commence prior to the University Semester 1 start date – information on these dates can be found on the College of Education, Health and Human Development website www.canterbury.ac.nz/education

Application dates for programmes requiring a special application

Qualification	Applications due
Master of Engineering in Fire Engineering (international students should apply by 1 June)	1 June and 1 December
Postgraduate Certificate in Antarctic Studies	9 April
Bachelor of Music with Honours – Performance	15 September
Master of Music – Performance	
Postgraduate Diploma in Clinical Psychology	20 September
Master of Social Work (Applied)	30 September
Master of Audiology	1 October
Master of Counselling	
Master of Speech and Language Pathology	
Postgraduate Diploma in Child and Family Psychology	
Master of Fine Arts	1 November
Master of Science in Applied Psychology	30 November
Master of Engineering (starting in February)	10 January
Professional Master of Engineering Geology	12 January
Master of Engineering (starting in July)	15 June
Postgraduate Diploma in Business Administration	Two weeks before the start of the term
Master of Business Administration	
Graduate Diploma in Teaching and Learning (Early Childhood; Primary; Secondary)	Applications open anytime
Master of Teaching and Learning (Primary; Secondary)	(closes 14 December 2020)

Some programmes may require an early Application to Enrol in addition to the special application. Other programmes not listed in this table may require a special application. Check www.canterbury.ac.nz/regulations for detailed application requirements for your intended course of study.

UC Contact Centre:

NZ Freephone: 0800 VARSITY (0800 827 748)

T: +64 3 369 3999

E: info@canterbury.ac.nz

University of Canterbury

Te Whare Wānanga o Waitaha

Private Bag 4800

Christchurch 8140

New Zealand

www.canterbury.ac.nz



Official sponsor of:



Tell us what you think of this publication at
publications@canterbury.ac.nz