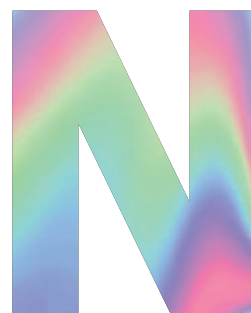
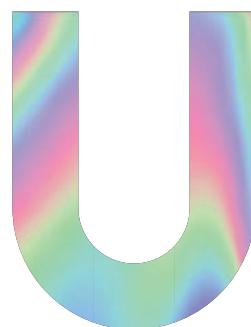


A University True to its Basics,  
and Preparing for the Future



**GREAT STEP**





# GREAT STEP

## CONTENTS

President's Message	04
Vision	06
History	08
Competitiveness	10
Educational Environment	12
Educational Programs	14
Global Education Network	16
Research Capacity	18
Colleges	20
Graduate Schools	48
Jeju National University Hospital	56
Educational Support and Welfare Facilities	61
Organizational Chart	64
Campus Map	66

## Jeju National University, "an institution true to its basics, and preparing for the future"

**S** We take the future of our **S**tudents into account.

Jeju National University knows how to educate students.

At Jeju National University, students can prepare themselves for the future with the educational support that we provide in order to realize their talents and become the future leaders in their disciplines.

**T** We try hard to help the faculty take pride in their **T**eaching.

At Jeju National University, where education for the future is offered, future-oriented education and the effectiveness of research, backed by trust and respect, two key factors in boosting the pride as educators, are secured.

**E** We highly value the sense of accomplishment **E**very staff member feels.

At Jeju National University, where everyone involved works hand in hand, by establishing a sensible administrative support system, the administration that all members of the university agree on is realized.

**P** We consider the **P**rogress of the local community.

At Jeju National University, which represents Jeju itself, with industry-university collaboration for co-development and sustainable cooperation with other educational institutions from home and abroad, we make a unique knowledge ecosystem for Jeju.

Jeju National University is an educational institution for everyone.

**Song, Seok-Eon**

President of Jeju National University

*Seok-Eon Song*





TO THE BASIC  
FOR THE FUTURE

# GREAT STEP

**STUDENT : Future of Students**

- Provide education that trains students for the future
- Foster talented people who will make a difference in the future

**TEACHERS : Pride of Faculty**

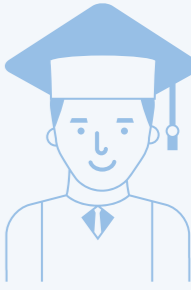
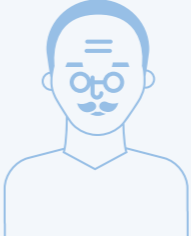
- Enhance the pride of faculty members with trust and respect
- Secure effectiveness of future-oriented research

**EVERY STAFF : Sense of Accomplishment of Staff**

- Help staff members feel rewarded and happy
- Establish welfare which everyone benefits from and an administration which everyone agrees on

**PROGRESS : Advancement of University**

- Integrate the industry-university collaboration with the local community
- Instigate sustainable cooperation with other educational institutions and a sound financial system





## 1952~1979

- 1952. 05** Established and opened Cheju Junior College
- 1955. 04** Elevated to a Four-Year Provincial College (Cheju College)
- 1962. 03** Designated as a National College
- 1964. 03** Relocated the Department of Scientific Agriculture to Seogwipo
- 1977. 08** Began the construction of the Ara Campus
- 1978. 12** Authorized to establish graduate schools and the Graduate School of Education
- 1979. 12** Relocated the Departments of Agriculture and Fisheries to the Ara Campus

## 1980~1999

- 1980. 02** Completed the relocation and integration to the Ara Campus
- 1982. 03** Elevated to a national university
- 1984. 03** Opened affiliated schools (middle & high schools) for the College of Education
- 1988. 03** Divided the College of Social Sciences into the College of Law and the College of Economics & Commerce
- 1989. 03** Divided the College of Science & Engineering into the College of Natural Science and the College of Engineering
- 1989. 11** Authorized to establish the Graduate School of Business Administration
- 1990. 11** Authorized to establish the Graduate School of Public Administration
- 1996. 11** Authorized to establish the Graduate School of Industry
- 1998. 03** Opened the School of Medicine (Authorized to establish the Graduate School of Pre-Medical Science in 1995)
- 1999. 11** Authorized to establish the Graduate School of Interpretation

## 2000~2009

- 2000. 03** Changed the school motto and enacted the university charter
- 2001. 11** Opened the Cheju National University Hospital
- 2003. 11** Established the Industry-University Coordination Group
- 2006. 01** Started Ubiquitous Campus
- 2008. 03** Integrated Cheju National University and Cheju Teachers College
- Opened the School of Medicine
- Established the College of Veterinary Medicine
- 2009. 01** Changed the University UI
- Changed the English name to Jeju National University
- 2009. 03** Opened the Law School
- Opened the Graduate School of Social Education
- 2009. 10** Opened the newly-constructed Jeju National University Hospital

## 2010~

- 2011. 03** Established the School of Nursing
- 2012. 03** Changed the name of the College of Law to the College of Social Science
- 2012. 05** Marked the 60th anniversary
- 2012. 09** Opened the Center of Jejuans in Japan
- 2013. 08** Completed the construction of the School of Medicine II
- 2014. 09** Completed the construction of the College of Veterinary Science
- 2014. 10** Completed the construction of the Sustainable Agriculture Research Institute
- 2015. 10** Completed the construction of the new main building of the College of Applied Life Sciences
- 2015. 11** Established the Graduate School of Public Health and Welfare
- 2016. 04** Established the University Job Creation Center
- 2017. 03** Established the College of Multidisciplinary Studies Toward Future
- Changed the name of the School of Medicine to the College of Medicine
- 2017. 07** Opened the Veterinary Hospital specializing in Horses
- 2017. 08** Opened the Human Rights Center
- 2017. 10** Opened the state-of-the-art Digital Central Library
- 2018. 02** Opened the Center for Fostering Talents
- 2018. 04** Opened the Student Dormitory VI
- 2018. 11** Put the cutting edge training ship Ara out to sea
- 2019. 03** Successfully attracted the College of Pharmacy



Selected as the best educational institution for  
conducting various national projects

The international competitiveness  
of Jeju National University has attracted attention.  
As the university has shown outstanding performances  
in a number of national and media assessments,  
its value and capability, two qualities that a university representing Korea should  
possess, have been acknowledged.

Ranked 1st in student employment rate among  
hub national universities in 2018



01

Ranked the highest in  
the student employment  
rate among hub national  
universities

(Government public  
announcement, ranked between  
1st and 3rd in the last five years)

02

Selected as a hub university  
with the best Global Teachers'  
University (GTU) Project Group  
for two consecutive years

(Ministry of Education)

03

Selected as a “self-improving  
university” in the university  
fundamental competence  
diagnosis

(Ministry of Education)

04

Ranked 1st among the  
hub national universities  
conducting the national  
university promotion projects

(Ministry of Education)

05

Selected for having an  
excellent university  
employment center for two  
consecutive years

(Ministry of Employment, the  
only national university receiving  
the honor)

06

Selected for carrying out a  
pilot project for leading the  
local community

(Ministry of Education)

07

Selected as a university  
focusing on software

(Ministry of Science and  
Technology, 10 billion KRW)

08

Improved the growth and  
reproductivity of roosters by  
applying plasma technology  
for the first time in the world

09

Selected as a university for  
three projects in the non-R&D  
sector for the regional special  
industry promotion project

(Ministry of SMEs and Startups)

10

Selected as a university for  
the promotion project linked  
to innovative city public  
institution

(Ministry of Commerce, Industry,  
and Energy, 13.9 billion KRW)

11

Acquired the global G.A.P.  
license for red-spotted  
groupers

12

Acquired the “five-year full  
accreditation” for the College  
of Veterinary Medicine

(Accreditation Board for  
Veterinary Education in Korea)



# World Class Educational Environment

The educational environment of Jeju National University has already been ranked at the top in Korea according to national evaluations.

For the efficient learning and productive university life of students, Jeju National University has strengthened student welfare and upgraded its educational environment by introducing high-tech equipment to its classrooms.



State-of-the-art Smart-Green Campus Surrounded by Pristine Natural Environment	Jeju National University has been chosen as a government-sponsored green campus, and it has also established a first-class integrated wire-wireless communications system in the country.
Ranked the Highest in Terms of Faculty Retention Rate and Lowest Educational Expenses among Hub National Universities	Jeju National University achieved a full-time faculty retention rate of 100%, and the average tuition per student is approximately 1,600,000 KRW.
Affordable Tuition	Jeju National University's tuition is half the amount of other private universities (with an average of 3,780,000 KRW per year), and is ranked 1st among hub national universities.
Generous Scholarships	Jeju National University grants scholarships equivalent to 70% of its total tuition revenues to 85% of the entire student body.
Pleasant and Cozy Dormitories	Dormitories accommodate 26% of the student population and are equipped with facilities for residents to read, study, and work out.
High-tech Digital Central Library	By using the integrated mobile management system, students can have access to the library, reserve seats, check out books, and book a study room. In addition, it can seat 1,500 students for individual study and houses 1,300,000 books, non-book materials, and academic journals.
The Center for Fostering Talents, the Cradle of Outstanding Individuals	The center provides a number of facilities for those who are preparing for a variety of national examinations and other qualification tests to be professionals, including reading rooms, group discussion rooms, multipurpose lecture rooms, bedrooms, and shower rooms.



EDUCATIONAL  
PROGRAMS DESIGNED  
TO FOSTER WORLD-  
CLASS TALENTS

**Jeju National University has been operating a customized curriculum based on the six core competencies in order to cultivate talented individuals who will show their competitiveness in various fields.**

The six core competencies include effective communication, cooperation, exploring issues, challenges and achievements, global multiple cultures, and creative convergence. Through them, the faculty and student work hand in hand to make a university where both professors and students unfold win-win strategies, jointly conducting research. In addition, students and the university will not only help each other grow but also actualize their dreams.

From Fundamental Education  
to Core Competencies

- Assess basic learning abilities (writing, mathematics, and English) and establish a learning support system by level.
- Provide education to foster local talents utilizing the core competence assessment (J-CESA) for undergraduate students.
- Conduct the Korea Collegiate Employability Skills Assessment (K-CESA), for skills required in the real work world.
- Improve the quality of university education using Korea-National Survey of Student Engagement (K-NSSE) and the National Assessment of Student Engagement in Learning (NASEL).

Operation of Curriculum to  
Deal with the 4th Industrial  
Revolution

- Provide the curriculum tailored to the specific requirements of each college and the school system.
- Operate a curriculum based on the social demands of each department linked both on and offline.

Curriculum Sharing with Top  
Overseas Universities

- Established majors associated with international studies
- Upgraded the 7+1 system (Study abroad during one semester out of 8)

Customized Industry-Academic  
Education

- Operate *the Track*, a customized human resources development program for a variety of businesses and industries. This is a successful industry-academic model in which more than 70% of the participating students find jobs and receive scholarships.
- Students find employment with companies, including Kakao, Jeju Semiconductor, Korea Midland Power, Global GTI, Topec Engineering, Young-Nam Institute of Construction Technology Education, and Baro Gujo.

Educational Accreditation  
Program

- By operating the Educational Accreditation Program (in the fields of engineering, medicine, architecture, and law), Jeju National University has accomplished substantial improvements across the entire field of education, and has fostered competent and creative talents who will contribute to the knowledge-based society in the years to come.



## Establishing the Global Education Network

By promoting academic and student exchanges with the world's prominent universities and developing various globalization programs, Jeju National University has been doing its utmost to cultivate “glocal” talents who can actively see and respond to changes and trends.

At Jeju National University, talented individuals from all over the world can freely exchange their ideas and demonstrate their full potential.



### Global Academic Network

- An established network with 300 universities and 30 institutions in 50 countries, including the University of California, San Diego, USA.
- Operate a Jeju National University Korean language school in China.

### Overseas Exchange and Study Programs

- Have 1,000 students participate in long and short term exchange and language programs in 20 countries.
- Guam, New Zealand, Germany, Malaysia, the US. Spain, Japan, China, the Czech Republic, Canada, Poland, the Philippines, Australia, and Hong Kong.

### Increase in the Number of International Students

- Currently have 1,500 international students from 40 countries.
- Nepal, Russia, Mongolia, the US, Vietnam, Sri Lanka, Spain, Uzbekistan, India, Japan, China, Cambodia, Canada, Pakistan, Poland, the Philippines, Hungary, etc.

### Hub University Supporting the Global Teachers' University (GTU) Project

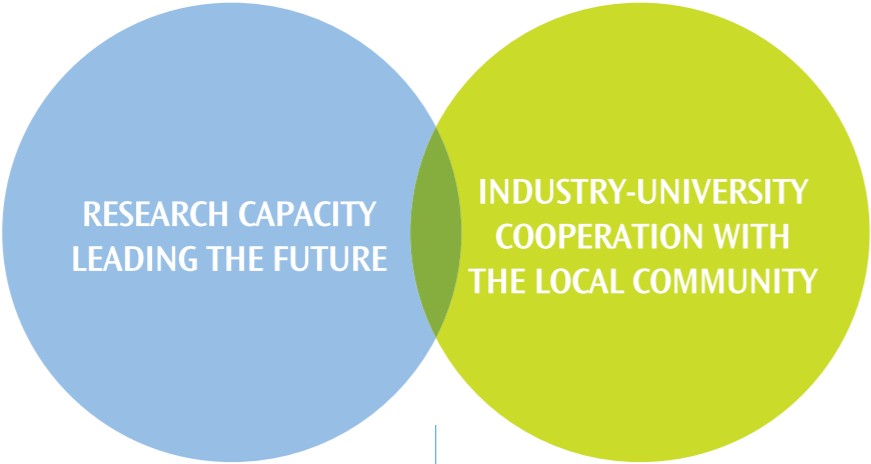
- Encourage students to double major and acquire a teacher's certification overseas (Boise State University, USA)
- Offer overseas training courses (Southern Utah in the US, Australia, the Philippines) and help students find a teaching position abroad (including the US)

### Programs Supporting Overseas Internship and Employment

- Operate programs in the US, Canada, the UK, China, Japan, Australia, and Singapore.

### Volunteer Abroad Programs

- Conduct medical and educational services in underdeveloped countries, such as Laos, Uganda, and Sri Lanka.
- Promote the Official Development Assistance (ODA) Project and run the International Development and Cooperation Center

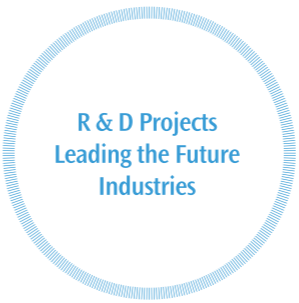


Jeju National University has made a lot of effort to improve both national and regional development by attracting and carrying out more than 700 research projects annually for the nation, the local government, and corporations.



In order to lay the foundation for holistic education and talent cultivation, the university has pushed ahead with a number of projects for human resources, R&D, and specialized businesses.

TO THE BASIC  
FOR THE FUTURE



- Leaders in Industry-University Cooperation (LINC+) Project
- BK (Brain Korea) 21 Plus Project
- Software-Centered University Project
- Project to Support the Engineering Educational Innovation Center
- Women in Science, Engineering, and Technology Promotion Project
- Support Project to Strengthen Software Education for Global Teachers' University
- Project of the Regional Center for Creativity Education
- Project of University Leading Intellectual Property Education
- Project to Foster the Gifted in Science

- University Core Research Institutes (Subtropical/Tropical Organism Gene Bank and Institute for Nuclear Science & Technology)
- Jeju Black Cattle Research Center (Establish dielectric substances and develop technology for industrialization)
- Health Functional Marine Food Research Center (Develop functional materials originated from the ocean)
- Cancer Stem Cell Integration and Control Research Institute
- Skin Damage Control Network Research Center
- Jeju Sea Grant Center (Cultivate Human Resources in Fisheries Area)
- EV Battery Recycling Center
- Social Sciences Korea (SSK) Support Project
- Humanities City Support Project

- Industry-Academy Convergence Zone Establishment Project (Green IT/BT Future Industry Island Establishment)
- Project to Promote Businesses Linked to Innovative City Government (Promote Jeju Type Smart-Agro Farm Industry)
- Project to Support Job Creation Tailored to Local Industries
- Industry Intern Project Linked to the Employment in Local Small and Med-sized Enterprises
- Jeju Special Self-Governing Province Integrated Health Promotion Project
- Project to Support the Children's Food Service Management Support Center of Jeju Special Self-Governing Province

T O  
H  
T B A S I C

+

F O R  
H  
T F U T U R E

## COLLEGES OF JEJU NATIONAL UNIVERSITY

### Colleges

College of Humanities / College of Social Sciences /  
College of Economics & Commerce / College of Education /  
College of Applied Life Sciences / College of Ocean Sciences / College of Natural Sciences /  
College of Engineering / Teachers College / College of Veterinary Medicine /  
College of Nursing / College of Arts & Design /  
Multidisciplinary Studies Toward Future

# COLLEGE OF HUMANITIES

## Realizing the Ideas of Humanism

### Understanding toward Humans and the World

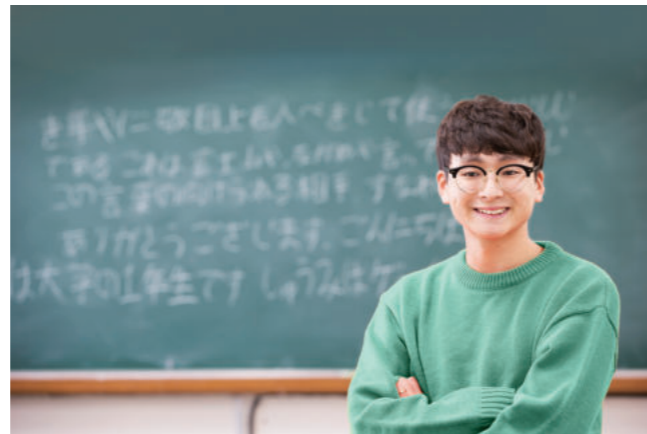
By offering education and conducting research on linguistics, literature, philosophy, and sociology, the College of Humanities has fostered intellectuals equipped with refined knowledge on humanities, ultimately realizing the ideas of humanism.

In the 21st Century, when the 4th Industrial Revolution was initiated, the technology that has continually been innovated is finally connected to humans. As the boundary dividing humans and technology becomes blurred, "What is a human being?" has become a hot issue for people to give deep thought. In the face of the turning point in the history of civilization, the College of Humanities has striven to intensify the understanding and insight with regard to humans and life. *The Public Management of Nature and Sustainable Lifestyle*, a project led by some of the professors of the College of Humanities is a well-known example.

The College of Humanities has also supported "Jinangjae," a special class run by the vice-dean for the students who study for a variety of state examinations and other tests to find a position at public or private enterprises.

In order to create more employment opportunities for those majoring in the humanities and social sciences, the College of Humanities, together with Jeju Special Self-Governing Province, has offered *the Program to Foster Specialists on Cultural Contents, Planning, and Promotion. The Business Group for Creative Talents on Local Cultural Contents* was selected for the University for Creative Korea (CK), contributing to the cultivation of professionals with creative cultural science mind who specialize in cultural content.

The talented individuals the College of Humanities has produced are actively working in a multitude of areas, making contribution to the development of the local community and the nation as a whole, and further to the advancement of the human society.



[Korean Language & Literature](#) / [English Language & Literature](#) /  
[German Studies](#) / [Japanese Language & Literature](#) /  
[Chinese Language & Literature](#) / [History](#) / [Sociology](#) / [Philosophy](#)



## COLLEGE OF SOCIAL SCIENCES

### Realizing the Ideals of Human Community

#### Fostering Creative Leaders with Insight into the Times

The College of Social Sciences offers education aiming to foster creative leaders who have insight into the today's trends that emphasize the norms and the experiential spirit of social sciences, realize social justice and social welfare, and lead the local community, the nation, and the human society in the end.

To that end, the College of Social Sciences offers a curriculum through which students can acquire a rational and systematic mindset and application ability across the field, including public administration, political science and diplomacy, and journalism and public relations.

The core of the 4th Industrial Revolution is "convergence." The members of agricultural and industrial societies focused only on knowledge in one specific area.

In the era of the 4th Industrial Revolution, however, it is crucial for the members to have the ability to share, integrate, and make use of a large amount of knowledge. What the times require the College of Social Sciences to do is to cultivate leaders who have the extensive cognitive ability and make a comprehensive decision.

The College of Social Sciences, to respond to the changes of the times, has taken an initiating role in providing the "creative education, practical education, and education to cultivate citizens of the world required by the new era."

In particular, it has put a lot of effort into training outstanding professionals who possess an international outlook, keeping pace with the trends of the localization and the globalization of Jeju, and go one step forward in the entire local administration.

The College of Social Sciences, without being confined to one specific area, has been assisting students entering a wide range of areas by providing a well-rounded education which paves a road for them to work in many different fields.



[Publish Administration](#) / [Political Science & Diplomacy](#) /  
[Journalism & Public Relations](#)



COLLEGE OF  
**ECONOMICS & COMMERCE**

# Fostering Global Talents Leading the World Economy

## One Hundred Students Study Abroad Each Year

The educational objective of the College of Economics & Commerce is to foster professionals possessing knowledge and practical ability required in managing the economy, industry, and business. That is, the College of Economics & Commerce strives to produce talented individuals who can contribute not only to the local community and the nation, but also to the world, by cultivating creative, competent management personnel with competitiveness.

To achieve the goal, the College of Economics & Commerce has provided and run an education course that helps students obtain knowledge which is applicable right on the spot and reflects the voices of the people who actually work in the real business world.

The educational environment is also superb. Different types of classrooms, from auditoria lecture classrooms and seminar classrooms to state-of-the-art interactive computer classrooms equipped with devices for video lectures are already in place. In addition, various scholarships are available to ease the financial burden of students and their parents.

The College of Economics & Commerce has a well-established employment support system. It has been running special preparation classes for those who study for exams to become certified public accountants, tax accounts, certified public appraisers, and public officials. Professional employment consultants are always available to assist students finding jobs in their fields.

On top of that, the College of Economics & Commerce has arranged a cooperative exchange system with a number of universities in the US, Canada, China, Taiwan, and Japan. An average of 100 students study overseas through the programs, such as "the 2+2 multiple degree system," "the 6 months to one year exchange student program," "the overseas internship," and "a short-term language course during vacation."



Business Administration / Tourism Management / Accounting /  
International Trade / Economics / Tourism Development /  
Management Information Systems



## COLLEGE OF EDUCATION

### Mecca of Fostering Secondary School Teachers

#### Helping Students Find a Teaching Position in the US

The College of Education aims to realize the educational ideals specified in the Education Acts and cultivate outstanding secondary middle school teachers who can actively respond to globalization and the diversified future with passion. It is truly the cradle of school education and the center of Jeju's secondary education.

The graduates from the College of Education have played a pivotal role in advancing secondary education not just in Jeju but also in many regions all across Korea. They are not just confined to the educational circle; they have made a considerable contribution to the development of the nation and society while working in academia, media, financial industries, research institutes, and enterprises.

The trend of education should reflect the current of the times. The College of Education where teachers who will be responsible for the future of education has offered a curriculum which keeps with such trends of the modern era.

One prominent example is the GTU (Global Teachers' University) Project through which students have an opportunity to study in a university in the US that shares a student exchange program and obtain a US teaching certificate. Some of those who acquired this certificate work as teachers in the US. In addition, student teachers are sent to schools in the US, Australia, and the Philippines to strengthen their ability to offer global education to their future students. As a result of such achievements, the Global Teachers' University Project Group was selected as the best for two consecutive years.

The College of Education will make every effort to reinforce the value of education as an education community of consideration and cooperation.



[Korean Education](#) / [English Education](#) / [Social Studies Education](#) (Social Studies Education and Geography Education) / [Ethics Education](#) / [Mathematics Education](#) / [Faculty of Science Education](#) (Physics Education and Biology Education) / [Computer Education](#) / [Physical Education](#)

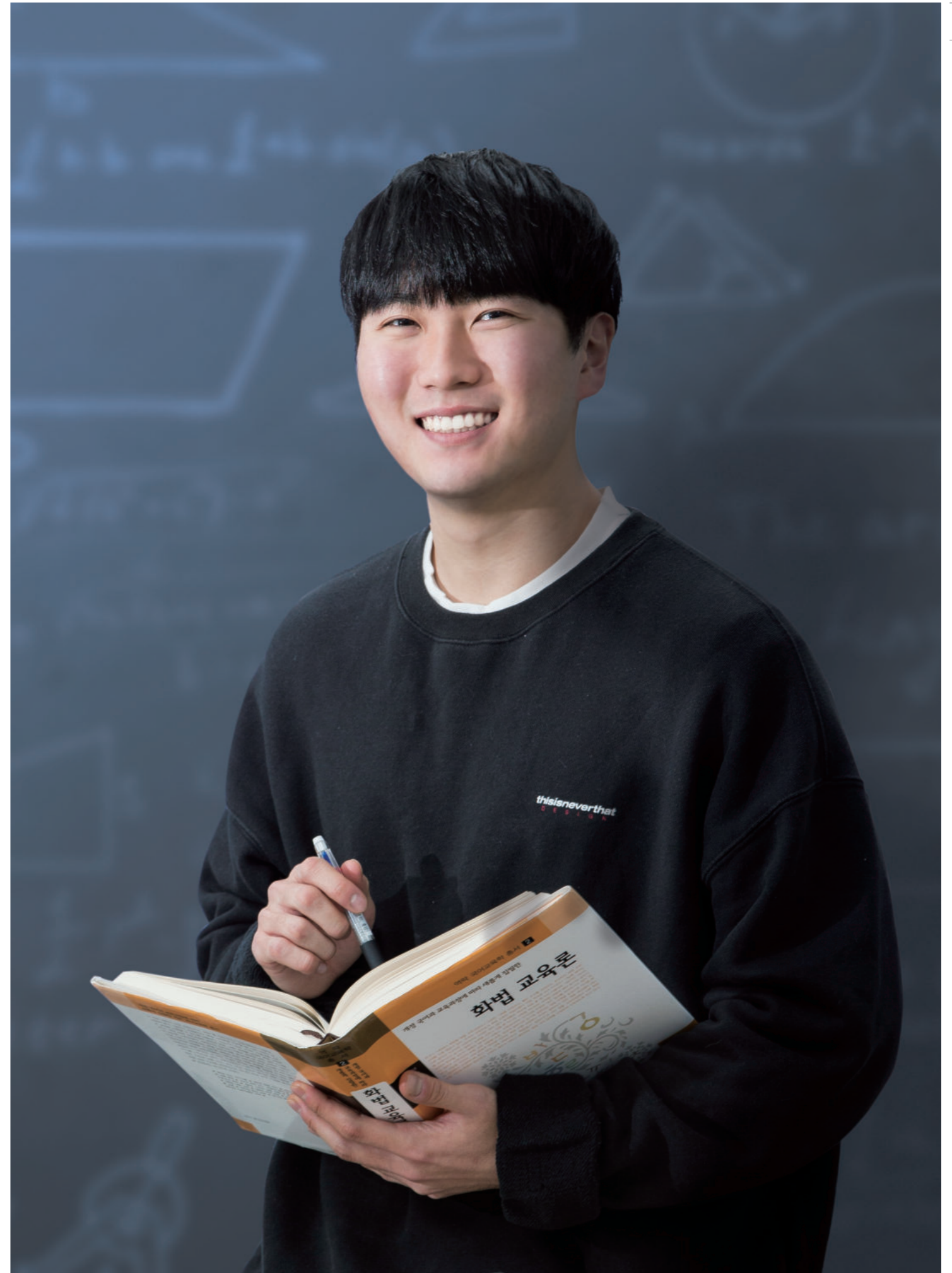
#### ATTACHED ORGANIZATION

Jeju National University In-Service Training Center for Teachers

#### AFFILIATED SCHOOLS

Jeju National University High School

Jeju National University Middle School



## COLLEGE OF APPLIED LIFE SCIENCES

### Leader of the Advanced Convergence and Integration Agricultural Science Industry

#### Cultivating Talented Individuals Creating Added Value

The College of Applied Life Sciences has been fostering talented individuals who can create added value on food that is safe to consume by utilizing subtropical plants, such as tangerines, mangoes, and different types of teas and herbs as well as animal resources, including Jeju horses, black pigs, and black cows. The experts the College of Applied Life Sciences has produced not only work in the animal and plant resources development field but also are in charge of developing materials for functional medicine and conserving and managing the clean environmental ecosystem.

The College of Applied Life Sciences has carried out a number of national projects: the Future Agricultural Management Personnel Cultivation Project of the Ministry of Agriculture, Food and Rural Affairs; the Project to Foster Talented Individuals in Convergence for Subtropical Bioindustry and Green Agriculture Bioindustry of the Ministry of Education; the Project to Establish an Open Lab to Promote Jeju Type Smart and Agrofarm Industry of the Ministry of Trade, Industry, and Energy; and the project associated with public institutions to distribute base technology and promote the Industry.

Based on the features of the subtropical agricultural bio-industry of Jeju, the Future Smart Farm Project which applies the technology from the 4th Industrial Revolution, including automation and artificial intelligence (AI), has been in progress.

Furthermore, the College of Applied Life Sciences has transformed itself into a college focusing on industrial technology by conducting not only Bio Pharming, which produces ingredients for functional medicine, but also big data technology, biotechnology and biotechnology convergence combined with information and communication technology in order to prepare for the future of subtropical bioindustry.



[Faculty of Bioscience & Industry](#) (Plant Resources & Environment and Horticultural Science) / [Faculty of Biotechnology](#) (Biomaterials, Molecular Biotechnology, and Animal Biotechnology) / [Applied Economics](#)

#### ATTACHED ORGANIZATIONS

Research Center Attached to the College of Applied Life Sciences  
Sustainable Agriculture Research Institute  
Scientific Technology Center for Citrus & Flowers



# COLLEGE OF OCEAN SCIENCES

## Borderless Challenge to Lead the Future

### Cradle of Experts in Ocean Science

The College of Ocean Sciences has produced excellent individuals with intelligence, creativity, and the application ability by offering education and R&D on the theories and their applications in the ocean sciences, including utilization and development of fisheries and marine resources, the understanding of the marine climate and environment, as well as the use and conservation of marine space.

In particular, it has won a number of national projects, including POST-BK21 (Brain Korea) by focusing on research in the field of ocean sciences that makes the best of Jeju's regional characteristics. With this, the College of Ocean Sciences has provided a lot of undergraduate and graduate students with scholarships and helped them find their carrier paths and quality job opportunities.

In addition, it has proved that it is truly the cradle of talented individuals in the ocean sciences by establishing the marine and fishery cluster with local industries, research institutes, and the local government. The specialists the school has produced are playing an active role in many national research institutes and public agencies.

The College of Ocean Sciences of Jeju National University has been highly regarded as an educational institution with high competitiveness both domestically and internationally since students can have enough hands-on experience right on the spot thanks to its geographical location compared with that of other universities.

With the newly-built 3,000-ton training ship Ara ho, and the Jera ho, a high-tech research ship, the quality of education has been improved. In order to offer students a better learning environment, the College of Ocean Sciences buildings 1 & 2 are currently under construction.



[Faculty of Marine Biomedical Sciences](#) (Marine Life Sciences, Aquatic Life Medicine) / [Marine Industry & Maritime Police](#) / [Earth & Marine Sciences](#) / [Environmental Engineering](#) / [Civil Engineering](#) / [Ocean System Engineering](#)

### ATTACHED ORGANIZATION

Training Ship / Management Center for Ship Operation



## COLLEGE OF NATURAL SCIENCES

### Pioneer in Cutting-edge Science and Well-being Industry

#### Fostering Science Talents Creating New Knowledge and Technology

The College of Natural Sciences has been committed to the education and research for cultivating talented individuals with a “glocal” mindset who will lead the Pacific Era in the fields of basic, living, and sports science.

By running both *the Project Group to Cultivate Specialists in the Natural Cosmetics Industry* in which departments of Biology and Chemistry & Cosmetics participate as part of the University for Creative Korea (CK) Project and *the Project Group to Creative Talents in the 6th Horse Industry*, it has striven to foster outstanding individuals so that they can lead the local industries.

In addition, the College of Natural Sciences has put into practice a model in which the local university and local industries co-exist and evolve together by operating the Research Institute for Basic Science, the Smart Grid Research Center, the Research Center for Cosmetic Science, and other various state-run industry-academy cooperation project groups.

Especially, it has made great contributions to the development of scientific technology and the promotion of science and literature with the Jeju Science and Technology Development Center and the Physical Director Training Center up and running.

In the years to come, the College of Natural Sciences will strive to contribute to the advancement of the national and regional science technology and play a pivotal role in leading the local industries by conducting research in the fields of basic science and living science, utilizing the regional features of Jeju, and educating students.



[Physics](#) / [Biology](#) / [Chemistry & Cosmetics](#) / [Food Science & Nutrition](#) / [Mathematics](#) / [Computer Science & Statistics](#)  
[Faculty of Human Ecology & Welfare](#) (Child & Human Welfare and Housing & Family Welfare) / [Fashion & Textiles](#) / [Faculty of Exercise & Sports Sciences](#)

#### ATTACHED ORGANIZATIONS

Jeju Science and Technology Development Center  
 Physical Director Training Center  
 Research Institute for Basic Science



# COLLEGE OF ENGINEERING

## Fostering Engineering Professionals Leading the Fourth Industry

### Future-oriented High-tech Convergence Research

The educational goal of the College of Engineering is to nurture highly-skilled, talented individuals who have gained knowledge and skills concerning applied sciences and state-of-the-art technology, which are the basis of the nation's industrial advancements, and can apply their creative and specialized skills to their actual tasks.

In order to foster global talents, required by the 4th Industrial Revolution of the 21st Century, in particular, it has made every effort to help students acquire a wide range of qualities, including the leadership required in the new era, language skills to communicate with engineers from all over the world, and the knowledge regarding literature, arts, and history.

The engineering professionals who such endeavor has produced have not only laid foundations for the development of both national and regional industries but also worked in other countries.

With its own machine shop equipped with cutting-edge machine tools and experiment equipment, the College of Engineering is running the High-tech Science and Technology Research Institute responsible for promoting the nation's strategic science and technology field of the 21st Century in order to lead the high-tech science and technology sector of Jeju Free International City.

On top of that, it has also established the Innovation Center for Engineering Education to intensify and stabilize the certification system global engineering professionals need to go through to actively address the fast-changing environment for engineering education and the shifts of the times.

Superb faculty members and the curriculum which deals with innovative technology with flexibility are what served as the driving force behind the increased international competitiveness of the College of Engineering.



[Food Bioengineering](#) / [Faculty of Mechanical, Mechatronics, & Energy Engineering](#) (Mechanical Engineering, Mechatronics Engineering, Nuclear & Energy Engineering, and Chemical & Biological Engineering) / [Faculty of Electrical, Electronic, Telecommunication, & Computer Engineering](#) (Electrical Engineering, Electronic Engineering, Telecommunication Engineering, Computer Engineering) / [Faculty of Architecture](#) (Architectural Engineering and Architecture)

### ATTACHED ORGANIZATIONS

Advanced Science and Technology Institute  
Innovation Center for Engineering Education  
Machine Shop



# TEACHERS COLLEGE

## Cradle of True Elementary School Teachers

### Securing the Educational Competitiveness Second to None

Jeju National University, by merging with Jeju Teachers College in 2008, became the only hub national university with an educational institution educating both elementary and secondary school teachers, while acquiring the educational competitiveness of its own. The support fund given by the government for the consolidation of the two educational institutions and plenty of incentives for state-funded projects have been used to improve the quality of education.

As such, the Teachers College has transformed itself into one of the best colleges that produce elementary school teachers possessing expertise, upright personality, and a sense of duty as the school is furnished with unparalleled facilities, systems, and curriculum.

In fact, 95% and 92% of its students passed the elementary employment examination in 2004 and 2007, respectively. The astonishing passing rates are the products of the benefits of the small class programs only the Teachers College can offer, which enables students to take advantage of the face-to-face relations, useful educational experience, on the basis of the close relations between students and professors as well as between students and students.

Besides, both the field study outside of the province, which is a unique educational experience, and the overseas teaching practice course have contributed to boosting the capabilities of the students.

Beyond competence, the Teachers College will concentrate on nurturing educators with a strong work ethic and sense of duty based on the humanities and social manners, exemplary characters, and an in-depth perception of the dignity and values of a teaching position.



**Elementary Education** (Ethics Education, Korean Education, Social Studies Education, Mathematics Education, Science Education, Physical Education, Music Education, Art Education, Practical Arts Education, Education, English Education, and Computer Education)

#### ATTACHED ORGANIZATION

Training Center for Teachers

#### AFFILIATED SCHOOL

Jeju National University Elementary School



# COLLEGE OF VETERINARY MEDICINE

## Contributing to the Health of Animals and Humans

### Fostering the Best Veterinarians in Korea

The College of Veterinary Medicine has fostered professionals who can exhibit their expertise in the disciplines, such as veterinary medicine, pharmacology, biotechnology, drug development, and biomedicine, all of which have ever-increasing demands on new technology.

By supplying students with a sufficient capacity to conduct the primary health care for animals and the sanitary inspection of animal food, the College of Veterinary Medicine does its utmost to make contribution to the health of animals and further the well-being of humankind.

In addition, it has acquired the latest techniques of animal treatment and public hygiene and, at the same time, contributed to the promotion of international exchange in veterinary medicine.

The College of Veterinary Medicine has met the requirement by retaining facilities to train students, such as the Veterinary Clinic, the Train Ranch to Cure Big Animals, the Hospital Specializing in Horses, and the Jeju Wildlife Rescue Center, along with the veterinary medicine building completed in 2014. In 2018, it acquired the second-term accreditation from the Accreditation Board for Veterinary Education in Korea, which was the first case in the country as a national veterinary school, earning itself the title of one of the best institutions to cultivate veterinarians.

The range of field research covers not only clinical tests on farm animals and companion animals, but also preventive veterinary medicine, including zoonosis, food for human health, and environmental hygiene. Recently, it has played a significant role in carrying out various in-depth studies both in the bio-industry and in the convergence with information technology (IT).



[Veterinary Medicine / Pre-Veterinary Medicine](#)

#### ATTACHED ORGANIZATIONS

Veterinary Teaching Hospital

Veterinary Hospital Specializing in Horses



## COLLEGE OF NURSING

### Fostering World-class Nurses

#### Ranked the “highest” in the National University Assessment

The College of Nursing has produced nursing professionals who can offer creative and scientific services based on respect for people and the understanding of cultural diversity. The college encourages nurses to enhance their competence through continued self-innovation.

In addition, in order to address the changes in the domestic and international health care environments, the College of Nursing makes every effort to train nurses with global competence who can offer their services in any part of the world, while continually innovating its curriculum.

To that end, the courses at the College of Nursing are also focused on improving the research capacity of the students, cultivating the ability to identify and communicate effectively with patients, and cooperating with others for self-development.

Courses for master's and doctoral degrees are also offered. The graduates, who have demonstrated a high employment rate, work not only on the island but also all around the country as professionals in a number of health care fields, including nursing services, nursing research, and nursing education.

In 2014, the outstanding nursing education provided by the College of Nursing was recognized when it obtained the "five-year accreditation" in the Nursing Education Accreditation Assessment with a "high score," securing a high status as the best domestic nursing school.

For the College of Nursing to grow into a world-class school, its professors, teaching staff, students, and graduates will continue to do their best to set up effective educational courses that can help them innovate their curriculum and become medical professionals meeting the requirements of the time.



Nursing



## COLLEGE OF ARTS & DESIGN

### Fostering Creative Professional Artists

#### Operating Educational Courses to Lead the Cultural Industry

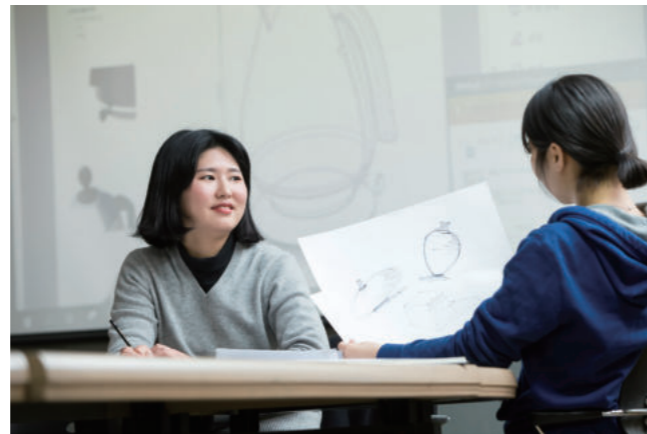
The College of Arts & Design has exerted every effort to cultivate talented artists who excel at expressing arts with creativity and a theoretical frame and also are good-natured and intelligent people who modern society needs.

The Faculty of Music focuses not only on the functional aspect of musical performances but also on emotional stability through music, the promotion of full-time teachers, the contribution to artistic activities of the local community, and the internationalization of domestic music. It also aims to serve as the stepping stone in boosting the sentiments of the people all around the nation by maturing and developing creativity of music and artistic senses.

The Faculty of Fine Arts provides courses on the overall theories of arts and their applications to foster intellectual and creative professional artists and art educators. While taking classes that the school offers, students can promote their experimental spirit, original expressions, and comprehensive thinking ability.

The Major of Multimedia Design of the Faculty of Industrial Design offers courses on design analysis, design planning, design concepts, and design realization to activate capstone design, run regional design projects, and participate in the domestic and international contests to foster "prepared designers" who possess creative expertise.

The Major of Culture & Molding Design, as cultural technology has emerged as the future strategic industry of Korea in the 21st Century, runs courses to cultivate talented students who have a competitive advantage and create high value-added ideas.



Faculty of Music / Faculty of Arts / Faculty of Industrial Design  
(Multimedia Design and Culture & Formative Design)



# COLLEGE OF MULTIDISCIPLINARY STUDIES TOWARD FUTURE

## Continued Dream of Learning

### Lighthouse of “Late-bloomers”

The College of Multidisciplinary Studies Toward Future helps those who began working right after graduating from high school pursue higher education at any time they want. In addition, it provides educational programs tailored to the needs of those who want to work and continue their education.

To lead a better life in modern society, people are encouraged to develop themselves and need to acquire accurate information to make right decisions. There are a lot of people who decide and get ready to strengthen their "occupational and intellectual capability" or live a second life in another area which is not the one they are engaged in. In response to the needs of those late bloomers, the College of Multidisciplinary Studies Toward Future strives to lead them to a "worthy life beyond survival," or help them make a "decision for a better life."

The College of Multidisciplinary Studies Toward Future offers courses after taking into consideration the regional characteristics and advantages of "Jeju," the foundation of our livelihood. The disciplines that are available are as follows: the investment and management of real estate, which works as the medium between people and nature; the convergence of the tourism industry, Jeju's principal industry; beauty and cosmetology, which creates a new value with unique beauty; senior citizen care and welfare in response to the era of an aging society.

Countless modern people live each day, surrendering themselves to the rapid currents of life, rather than live the life they hope for. Under these circumstances, the College of Multidisciplinary Studies Toward Future will serve as a lighthouse for late-bloomers who have new dreams to pursue, reflect on and reorganize their life, and plan a "life they want to lead," regardless of how old they are.



[Department of Beauty & Cosmetology](#) / [Department of Tourism Convergence](#) / [Department of Real Estate](#) / [Department of Silver Care & Social Welfare](#)



TO  
THE  
BASIC

+

FOR  
THE  
FUTURE

# GRADUATE SCHOOLS

## Graduate Schools

### Professionals Graduate Schools

Law School / Graduate School of Interpretation & Translation / School of Medicine

### Specialized Graduate Schools

Graduate School of Education / Graduate School of Business Administration /  
Graduate School of Public Administration / Graduate School of Industry / Graduate  
School of Social Education / Graduate School of Public Health and Welfare

# LAW SCHOOL

## Fostering Professional Judicial Officers

### Rich Curriculum under Superb Educational Environments

The Law School aims to nurture competent legal professionals who have both in-depth theoretical knowledge and ability obtained through hands-on experience as to international judicial affairs to meet the needs of the nation and the local people.

For students to commit to their study, the Law School offers the best-possible learning conditions, including a law library, a state-of-the-art computer lab for information search, E-lecture rooms, seminar rooms, mock courts, and an most up-to-date dormitory.

In addition, by securing outstanding full-time professors, the Law School offers a rich curriculum to foster legal professionals with an international mindset.

It has also concluded academic agreements with a number of Law Schools from home and abroad, including the Law School of the University of Hawaii in the US, the Law School of Japan's Soka University, and the Law School of Zhejiang University in China. It has also established the mutual collaboration system with large law firms in Korea and in other countries to provide sufficient training opportunities.

The Law School holds a mentoring program during which graduates share their experience and know-how with students and render consultations related to career options and employment perspective.

The Law School, in particular, includes in its curriculum not only the programs to enhance liberal education, cultivate students' character, and educate professional ethics, but also opportunities for students to participate in community services.



# GRADUATE SCHOOL OF INTERPRETATION & TRANSLATION

## Fostering Professional Interpreters and Translators

### Strict Evaluation and Thorough Management of Curriculum

The educational objective of the Graduate School of Interpretation and Translation is to foster professional interpreters and translators who will take a pivotal role in the era of globalization and informatization. Founded in March 2000, it was the first such graduate school to be established by a national university in Korea.

In order to produce professionals equipped with expertise and ability which can be put to use immediately, the school teaches not only specialized knowledge in each language and culture the students are studying, but also high level of practical techniques and knowledge required when they work at international conferences.

Various educational facilities, including the simultaneous interpretation booths, the study rooms, and the seminar rooms, are in place to balance lectures on theories and practical training, focusing on the internalization of its education.

Degrees are given after completing the educational courses of more than 18 hours of training per week as well as going through the strict assessment process. It also has a thorough management system to help students with their education.

Graduates are actively working as professional interpreters and translators in many areas, including academia, businesses, government, and public institutions. In addition, they have contributed to foreign language education to prepare local residents in the age of internationalization directly and indirectly.

The Center of Translation & Interpretation is also in operation. The Center appoints the graduates as researchers to offer translation and interpretation services, get involved in various tasks related to international cooperation, and provide lectures on foreign languages. It also fulfills its role as a center for on-the-job training by offering field visits to enrolled students.



[Korean-English / Korean-German / Korean-Chinese / Korean-Japanese](#)

### ATTACHED ORGANIZATION

Center for Interpretation & Translation



## SCHOOL OF MEDICINE COLLEGE OF MEDICINE

### Fostering Genuine Medical Professionals Realizing the Love for Humanity

#### Establishing a Medical Campus inside the Hospital

The School of Medicine aims to cultivate doctors who have acquired a high level of knowledge and treatment techniques required by the trends of a changing society, and good-natured medical professionals of the 21st Century who strive to reflect on and develop themselves with a sense of duty as well as ethical responsibility.

To boost the sense of ethics as health care providers and equip students with knowledge and practical skills to fulfill their social responsibility, the department educates not only in fundamental medical knowledge but also medical ethics, medical humanities, and other basic liberal arts so that they can build self-esteem as intellectual and refined professionals.

Since the second building of the School of Medicine and the dormitory exclusive to medical students were completed on the premise of the Jeju

National University Hospital in 2013, among all the colleges and graduate schools of Medicine, the School of Medicine is now able to provide the largest space per student. Students can take lectures and practice in the up-to-date educational facilities which are also suitable for group studies.

In particular, it has truly realized a medical campus by establishing the School of Medicine, the College of Medicine, and its own dormitory inside the Jeju National University Hospital.

Students can learn medical knowledge and treatment techniques in a self-disciplinary manner. Graduates, after obtaining creative research capability, have made contributions to the development of the nation and the local communities by offering genuine medical services in every corner of our society as medical professionals who are aware of holistic treatments and the respect for human life.

Medical Science of the School of Medicine /  
Pre-Medical Science of the College of Medicine

#### ATTACHED ORGANIZATION

Jeju National University Hospital



# JEJU NATIONAL UNIVERSITY HOSPITAL

A Comprehensive Medical  
Center Surrounded by Pristine  
Natural Environments and  
Equipped with World-class  
Advanced Medical Services

In the face of the opening of a market for the medical sector, the concept of medical services has been changing. An increasing emphasis has been placed on the quality of medical services as competition is expected to become fierce when overseas hospitals with high quality medical services and expertise enter the domestic market.

The Jeju National University Hospital, having the highest level of accreditation granted by the Ministry of Health and Welfare, recently extended its service from basic medical treatment to a satisfactory level of patient-centered total health care which combines medical service providing both medical treatment and emotional satisfaction, rather than providing only the treatment just as in the old system.

The hospital also has made concerted efforts to offer an opportunity of holistic care as well as a comprehensive medical services equating to that of advanced hospitals with aggressive marketing strategies based in the US, Singapore, and Thailand.

On top of that, since its inception in November 2011 as a national university hospital, the hospital has faithfully carried out its role in education, research, and medical services.

After its relocation of the newly built hospital to Ara-dong, Jeju City, in 2009, the hospital has achieved both qualitative and quantitative growth all at the same time by attracting a number of special medical centers, introducing the latest equipment, and hiring outstanding medical staff. It will serve as a representative national university hospital as it continues to provide patient-centered medical services.

Address	Aran 13-gil (Ara 1 dong), Jeju-si, Jeju Special Self-Governing Province, 63241
Size	Land Area 8123,938㎡ / Total Gross Area 85,364.54㎡ / Two underground levels and six floors
Outpatient	26 Departments
Number of Beds	650 beds in 192 rooms
	Jeju Local Cancer Center / Regional Cardio-Cerebrovascular Disease Center / Regional Rheumatism & Degenerative Arthritis Center / Regional Mental Health & Welfare Promotion Center / Regional Dementia Center / Emergency Medical Center / Health Promotion Center



Graduate Schools

Master's Degree Programs in 59 Departments (Majors) in 6 Fields  
Doctoral Degree Programs in 67 Departments (Majors) in 6 Fields

FIELD	MASTER'S DEGREES		DOCTORAL DEGREES	
FIELD OF HUMANITIES & SOCIAL SCIENCE	<ul style="list-style-type: none"><li>• Korean Language &amp; Literature</li><li>• Business Administration</li><li>• Economics</li><li>• English Language &amp; Literature</li><li>• Sociology</li><li>• Agricultural Economics</li><li>• Accounting</li><li>• Chinese Language &amp; Literature</li><li>• International Trade</li><li>• Public Administration</li><li>• German Studies</li><li>• Political Science &amp; Diplomacy</li><li>• Tourism Management</li><li>• Tourism Development</li><li>• Japanese Language &amp; Literature</li><li>• Management Information Systems</li></ul>	<ul style="list-style-type: none"><li>• History</li><li>• Philosophy</li><li>• Journalism &amp; Public Relations</li></ul>	<ul style="list-style-type: none"><li>• Korean Language &amp; Literature</li><li>• Business Administration</li><li>• English Language &amp; Literature</li><li>• Sociology</li><li>• Agricultural Economics</li><li>• Accounting</li><li>• Chinese Language &amp; Literature</li><li>• International Trade</li><li>• Public Administration</li><li>• German Studies</li><li>• Political Science &amp; Diplomacy</li><li>• Tourism Management</li><li>• Tourism Development</li><li>• Japanese Language &amp; Literature</li><li>• Management Information Systems</li><li>• History</li><li>• Philosophy</li></ul>	<ul style="list-style-type: none"><li>• Journalism &amp; Public Relations</li><li>• Education</li><li>• Faculty of Language Education<ul style="list-style-type: none"><li>· Korean Education</li><li>· English Education</li></ul></li><li>• Faculty of Social Education<ul style="list-style-type: none"><li>· Elementary English Education</li><li>· Social Studies Education</li><li>· Geographic Education</li></ul></li><li>• Faculty of Moral &amp; Ethics Education<ul style="list-style-type: none"><li>· Elementary Social Studies Education</li><li>· Ethics Education</li><li>· Elementary Moral Education</li></ul></li></ul>
	<ul style="list-style-type: none"><li>• Horticulture</li><li>• Fishery</li><li>• Biology</li><li>• Agriculture</li><li>• Earth &amp; Marine Sciences</li><li>• Chemistry</li><li>• Food Science &amp; Nutrition</li><li>• Mathematics</li><li>• Computer Science &amp; Statistics</li><li>• Human Ecology &amp; Welfare</li><li>• Fashion &amp; Textiles</li><li>• Nursing</li><li>• Biotechnology</li><li>• Biomaterials Engineering</li><li>• Marine Biomedical Sciences</li><li>• Biomedical &amp; New Medicine</li></ul>	<ul style="list-style-type: none"><li>Development</li><li>• Animal Biotechnology</li><li>• Software Convergence Education</li><li>• Aquatic Life Medicine</li></ul>	<ul style="list-style-type: none"><li>• Horticulture</li><li>• Fishery</li><li>• Biology</li><li>• Agriculture</li><li>• Earth &amp; Marine Sciences</li><li>• Chemistry</li><li>• Food Science &amp; Nutrition</li><li>• Mathematics</li><li>• Computer Science &amp; Statistics</li><li>• Human Ecology &amp; Welfare</li><li>• Fashion &amp; Textiles</li><li>• Nursing</li><li>• Biotechnology</li><li>• Biomaterials Engineering</li><li>• Marine Biomedical Sciences</li><li>• Biomedical &amp; New Medicine</li></ul>	<ul style="list-style-type: none"><li>Development</li><li>• Animal Biotechnology</li><li>• Aquatic Life Medicine</li><li>• Faculty of Science Education<ul style="list-style-type: none"><li>· Physics Education</li><li>· Biological Education</li><li>· Computer Education</li><li>· Elementary Science Education</li><li>· Elementary Practical Arts Education</li></ul></li></ul>
FIELD OF SCIENCE & ENGINEERING	<ul style="list-style-type: none"><li>• Faculty of Applied Energy System<ul style="list-style-type: none"><li>· Mechanical Engineering</li><li>· Energy &amp; Chemical Engineering</li></ul></li></ul>	<ul style="list-style-type: none"><li>• Electrical Engineering</li><li>• Electronic Engineering</li><li>• Physics</li></ul>	<ul style="list-style-type: none"><li>• Faculty of Applied Energy System<ul style="list-style-type: none"><li>· Mechanical Engineering</li><li>· Energy &amp; Chemical Engineering</li></ul></li></ul>	<ul style="list-style-type: none"><li>• Electrical Engineering</li><li>• Electronic Engineering</li><li>• Physics</li></ul>
FIELD OF ENGINEERING	<ul style="list-style-type: none"><li>• Food Bioengineering</li><li>• Telecommunication Engineering</li><li>• Environmental Engineering</li><li>• Computer Engineering</li><li>• Ocean Civil Engineering</li><li>• Architectural Engineering</li><li>• Ocean System Engineering</li></ul>	<ul style="list-style-type: none"><li>• Mechatronics Engineering</li><li>• Wind Energy Engineering<ul style="list-style-type: none"><li>· Wind Energy Mechanical System</li><li>· Wind Energy Electrical &amp; Control System</li><li>· Wind Energy Ocean &amp; Civil Engineering</li></ul></li></ul>	<ul style="list-style-type: none"><li>• Food Bioengineering</li><li>• Telecommunication Engineering</li><li>• Environmental Engineering</li><li>• Computer Engineering</li><li>• Ocean Civil Engineering</li><li>• Architectural Engineering</li><li>• Ocean System Engineering</li></ul>	<ul style="list-style-type: none"><li>• Mechatronics Engineering</li></ul>
FIELD OF ARTS & SPORTS	<ul style="list-style-type: none"><li>• Exercise &amp; Sports Sciences</li><li>• Fine Arts</li></ul>	<ul style="list-style-type: none"><li>• Music</li></ul>	<ul style="list-style-type: none"><li>• Exercise &amp; Sports Sciences</li><li>• Physical Education</li></ul>	
FIELD OF MEDICINE	<ul style="list-style-type: none"><li>• Veterinary Medicine</li><li>• Medicine</li></ul>		<ul style="list-style-type: none"><li>• Veterinary Medicine</li><li>• Medicine</li></ul>	

Academy-Institute Cooperative Programs

Master's Degrees  
Available in 7 Institutes

ORGANIZATIONS	PARTICIPATING SCHOOLS
Korea Institute of Energy Research (KIER)	Architectural Engineering, Faculty of Applied Energy System (Majors: Physics, Mechanical Engineering, Energy & Chemical Engineering, Electrical Engineering, and Electronic Engineering), Mechatronics Engineering, and Faculty of Wind Energy Engineering (Majors: Wind Energy Mechanical System, Wind Energy Electrical & Control System, and Wind Energy Ocean & Civil Engineering)
Korea Atomic Energy Research Institute (KAERI)	Food Bioengineering, Telecommunication Engineering, Computer Engineering, Architectural Engineering, Faculty of Applied Energy System (Mechanical Engineering, Energy & Chemical Engineering, Electrical Engineering, and Electronic Engineering), and Mechatronics Engineering
Korea Basic Science Institute (KBSI)	Chemistry, Biology, Food Science & Nutrition, Food Bioengineering, Biotechnology, Earth & Marine Sciences, Environmental Engineering, Faculty of Applied Energy System (Mechanical Engineering, Energy & Chemical Engineering, Electrical Engineering, and Electronic Engineering), and Mechatronics Engineering
Korea Institute of Machinery & Materials (KIMM)	Computer Engineering, Applied Energy System (Majors: Mechanical Engineering, Electrical Engineering, and Electronic Engineering), Mechatronics Engineering, Wind Energy Engineering (Majors: Wind Energy Mechanical System, Wind Energy Electrical & Control System, and Wind Energy Ocean & Civil Engineering)
Rural Development Administration (RDM)	Agriculture, Horticulture, Agricultural Economics, Veterinary Medicine, Food & Bioengineering, Biomaterials Engineering, and Animal Biotechnology
Korea Research Institute of Bioscience & Biotechnology (KRIBB)	Agriculture, Biotechnology, Biology, Food Science & Nutrition, Food Bioengineering, Biomaterials Engineering, and Animal Biotechnology
Korea Institute of Industrial Technology (KITECH)	Biomaterials Engineering, Biotechnology, Marine Biomedical Sciences, Aquatic Life Medicine, Applied Energy System (Majors: Mechanical Engineering, Nuclear & Energy Engineering, Electrical Engineering, and Electronic Engineering), Mechatronics Engineering, Food Bioengineering, Computer Engineering, and Telecommunication Engineering

Doctoral Degrees  
Available in 7 Institutes

ORGANIZATIONS	PARTICIPATING SCHOOLS
Korea Institute of Energy Research (KIER)	Faculty of Applied Energy System (Majors: Physics, Mechanical Engineering, Energy & Chemical Engineering, Electrical Engineering, and Electronic Engineering), Mechatronics Engineering, and Specialized Wind Energy Cooperative Program
Korea Atomic Energy Research Institute (KAERI)	Food Bioengineering, Telecommunication Engineering, Computer Engineering, Faculty of Applied Energy System (Mechanical Engineering, Energy & Chemical Engineering, Electrical Engineering, and Electronic Engineering), and Mechatronics Engineering
Korea Basic Science Institute (KBSI)	Chemistry, Biology, Food Science & Nutrition, Food Bioengineering, Biotechnology, Earth & Marine Sciences, Environmental Engineering, Faculty of Applied Energy System (Physics, Energy & Chemical Engineering, Electrical Engineering, and Electronic Engineering), and Mechatronics Engineering
Korea Institute of Machinery & Materials (KIMM)	Computer Engineering, Applied Energy System (Majors: Mechanical Engineering, Electrical Engineering, and Electronic Engineering), Mechatronics Engineering, and Specialized Wind Energy Cooperative Program
Rural Development Administration (RDM)	Agriculture, Horticulture, Biotechnology, Agricultural Economics, Veterinary Medicine, Food & Bioengineering, Biomaterials Engineering, and Animal Biotechnology
Korea Research Institute of Bioscience & Biotechnology (KRIBB)	Agriculture, Biotechnology, Biology, Food Science & Nutrition, Food Bioengineering, Biomaterials Engineering, and Animal Biotechnology
Korea Institute of Industrial Technology (KITECH)	Biomaterials Engineering, Biotechnology, Marine Biomedical Sciences, Aquatic Life Medicine, Applied Energy System (Majors: Mechanical Engineering, Nuclear & Energy Engineering, Electrical Engineering, and Electronic Engineering), Mechatronics Engineering, Food Bioengineering, Computer Engineering, and Telecommunication Engineering

Interdisciplinary Programs

8 Master's Degree Programs

ORGANIZATIONS	SCHOOLS
Biomedical Engineering	Medicine, Telecommunication Engineering, and Applied Energy System (Majors: Physics, Mechanical Engineering, Electrical Engineering, and Electronic Engineering)
Koreanology	Korean Language & Literatures, Sociology, and History
Atmospheric and Oceanic Sciences	Fishery, Ocean System Engineering, Environmental Engineering, Ocean Civil Engineering, Chemistry, and Earth & Marine Sciences
Finance & Information Science	Computer Science & Statistics, Economics, and Mathematics
Advanced Convergence Technologies	Mechatronics Engineering, Applied Energy System (Electronic Engineering), Food Bioengineering, Chemistry, Ocean System Engineering, Biomaterials Engineering, Animal Biotechnology, and Veterinary Medicine
Converged Studies on Graphic Design	Multimedia Studies, Business Administration, Management Information Systems, and Computer Education
Converged Studies on Industrial Design	Multimedia Studies, Tourism Management, and Electrical Engineering
Convergent Information Security	Computer Engineering, Management Information Systems, Computer Science & Statistics, Computer Education, Mathematics, and Elementary Computer Education

5 Doctoral Degree Programs

ORGANIZATIONS	SCHOOLS
Biomedical Engineering	Medicine, Telecommunication Engineering, and Applied Energy System (Majors: Physics, Mechanical Engineering, Electrical Engineering, and Electronic Engineering)
Koreanology	Korean Language & Literatures, Sociology, and History
Atmospheric and Oceanic Sciences	Fishery, Ocean System Engineering, Environmental Engineering, Ocean Civil Engineering, Chemistry, and Earth & Marine Sciences
Specialized Wind Energy	Applied Energy System (Majors: Mechanical Engineering, Electrical Engineering, and Electronic Engineering), Mechatronics Engineering, Ocean Civil Engineering, Ocean System Engineering, and Earth & Marine Sciences
Advanced Convergence Technologies	Mechatronics Engineering, Applied Energy System (Electronic Engineering), Food Bioengineering, Chemistry, Ocean System Engineering, Biomaterials Engineering, Animal Biotechnology, and Veterinary Medicine

Support & Welfare Facilities



▲ CENTRAL LIBRARY

The university library consists of the Central Library, the Digital Central Library, the Second Library, and three other branches (the Law Library, the Medical Library, and the Library of the Teachers College). The total gross area of the Central Library reaches 21,381m<sup>2</sup> and has 3,169 seats for individual study. The Digital Central Library boasts its integrated mobile management system, which enables students to do many things with their smart phones from keeping track of their access to the library to checking out books and reserving seats. The library is open not only to the members of the university but also to the local residents in order to hear their voices, which can contribute to the development of the local community.



◀ UNIVERSITY MUSEUM

The University Museum collects and has become home to a lot of valuable data in a variety of fields, including archeology, history, folklore, humanities, and art, not only from Jeju but also from Korea in general and other countries. It also strives to play an important role in research, exhibition, and education, making contribution to academic research and the cultural development domestically and internationally. The museum is equipped with three permanent exhibition rooms for the collections concerning the ocean, the land, and the people of Jeju, one special exhibition room, one exhibition room for collections donated by the Hanjip Folk Museum, three storage rooms, one audiovisual room, and an outdoor exhibition and terrace. Located outside the museum is the Lawn Plaza for stone artifacts. The museum houses more than 45,000 items which show Jeju's unique culture and lifestyle as well as buried cultural properties discovered through excavation projects.



◀ UNIVERSITY DORMITORY

The university student housing department is currently operating six dormitories and can accommodate 2,858 students (with 14 accommodations for married students), exhibiting a 26% accommodation rate for the entire student population. Many different types of furniture and wired/wireless Internet are available in the dormitory. It also offers other welfare facilities, such as reading rooms, study rooms, computer rooms, fitness centers, and a kitchen for international students, thus providing the best environment for residents to study and take care of their health as well as lodging.



▲ FOREIGN LANGUAGE INSTITUTE

In order to train progressive and active individuals who lead globalization, the Foreign Language Institute is equipped with excellent educational facilities and equipment and offers various programs for learning foreign languages. It offers special foreign language courses and mock TOEIC tests six times a year, along with various programs commissioned by other departments on campus. During summer and winter breaks, the Foreign Language Institute runs English camps for elementary and middle school students and language classes for public officers.

○ STUDENT COUNSELLING CENTER

The Student Counselling Center provides individual counseling (psychological counseling, night counseling, and counseling during lunch breaks and while taking a stroll), psychological testing, group counseling, education on respect for life, peer counseling, and counseling camp, and conducts research. For psychological testing, after objective psychological tests, such as personality type tests, personality and aptitude tests, and multifaceted personality tests are conducted and the results are analyzed, individual consultation with a counselor begins. For students who feel uncomfortable with one-on-one counseling and prefer to share their problems with more people, group counseling sessions are conducted with regard to the subjects students encounter everyday, such as how to improve self-esteem, build friendly interpersonal relationships, strike up a rational conversation, manage conflicts, release stress, and perform self-directed career search.

◀ FACULTY WELFARE CENTER (BTO APARTMENT COMPLEX)

The Faculty Welfare Center is an apartment complex built by private investment to improve the welfare of the faculty. The rent is much more affordable than that of housing in the downtown area, and it is easy to access since it is located on campus. The apartment complex can accommodate 168 households with 48 medium-sized apartments in three buildings (135.5m<sup>2</sup>), 64 small apartments (62.8m<sup>2</sup>) in two buildings, and 56 studio apartments (29.8m<sup>2</sup>) in one building with a gross area of 13,133m<sup>2</sup>. The apartment complex provides a child care facility and dry cleaning services. As it is located adjacent to Kwonje Oreum and equipped with trails, local citizens as well as the residents and faculty members visit here.

◀ GOLF ACADEMY

The golf driving range provides a multipurpose classroom to teach basic golf theories and techniques, a putting course, a bunker practice room, and an indoor driving range in case of rain. For the convenience of users, there is also a resting area, a shower room, a fitness center, and a cafeteria. Not only is it used as a venue for the local teenagers and those engaged in the golf industry to practice golf, but it is also open to students, faculty members, alumni, and local residents, expanding the market base of golf and contributing to the development of the local tourism industry in connection with the golf industry.

◀ ARA CONVENTION HALL

Opened in November 2004, the three-story convention hall is equipped with the latest facilities, including a large meeting room (200 seats) and seminar rooms (25 seats and 50 seats each) for medium and small scale international conferences and seminars and a guest house with 40 rooms for those participating in academic events and conferences. It is also where scholars, professors, and experts from other countries who visit Jeju stay and gather and serves as a venue for international exchange and collaboration since they can share their ideas while attending international academic events and seminars.



○ SUPPORT CENTER FOR PHYSICALLY CHALLENGED STUDENTS

This is an organization to support students with disabilities enrolled in the university. The center not only provides helpers to assist students with learning disabilities, but it also make a number of equipment and facilities available for physically challenged students, such as learning equipment, assistive technology devices, electric wheelchairs, laptop computers, visual materials, computers of exclusive use for disabled students to find information at the Central Library, and reading expanders. In order to improve welfare, the center runs shelters and conducts scholarship programs. In addition, it holds an event on the Day of Persons with Disabilities every year, collecting public opinions, selecting exemplary students, and giving awards. The Priority Support System is in place to assign them rooms in the dormitory, allow them to register for classes in advance, and exempt them from paying parking fees.



○ HEALTH IMPROVEMENT CENTER

The center provides care and treatment for mild ailments, trauma, and symptoms requiring emergency care to protect and promote the health of students and university members. It also conducts tuberculosis screening tests and prevention campaigns to keep people from getting infectious diseases and distribute anthelmintic and fine dust masks. It offers other health services, such as obesity and exercise counseling through body composition analysis, smoking cessation counseling to support smokers, mental health counseling for students, physical checkups and counseling, and emergency kits during events held both on and off campus, as well as emergency rescue CPR training to help people with sudden cardiac arrest.

◀ THE CENTER FOR FOSTERING TALENTS

The center provides a number of facilities for those who prepare for a variety of national examinations and other qualification tests. It has one underground level and two stories above ground in a gross area of 1,553m<sup>2</sup> and accommodates 44 students in 21 bedrooms. It also provides rooms for individual study, group discussion rooms, multipurpose lecture rooms, resting areas, shower rooms, and laundry rooms to help student concentrate on their studies. Currently, classes are offered for those who prepare for the examinations to become 5th grade public officials, accountants, and tax accountants. Scholarships are available for students who reside here.



◀ UNIPARK

The Unipark, a training center located in Seogwipo, is in operation to hold educational events including lectures by invited speakers on the development of the university as well as training programs for the faculty and students. Located adjacent to the beautiful coast of Bomok-dong, the Unipark provides breathtaking scenic views of Seopseom and Beomseom Islands near the popular coastal area, Seogwipo Chilsimni. It has one underground level and three stories above ground of a gross building area of 2,535m<sup>2</sup> on a piece of land of 4,853m<sup>2</sup>. There are 24 rooms for up to 15 people (14 Korean traditional rooms and 10 Western style rooms), a large conference room that can hold 100 people, seminar rooms, and small meeting rooms. The room rate is cheaper than that of nearby pensions.



◀ HUMAN RIGHTS CENTER

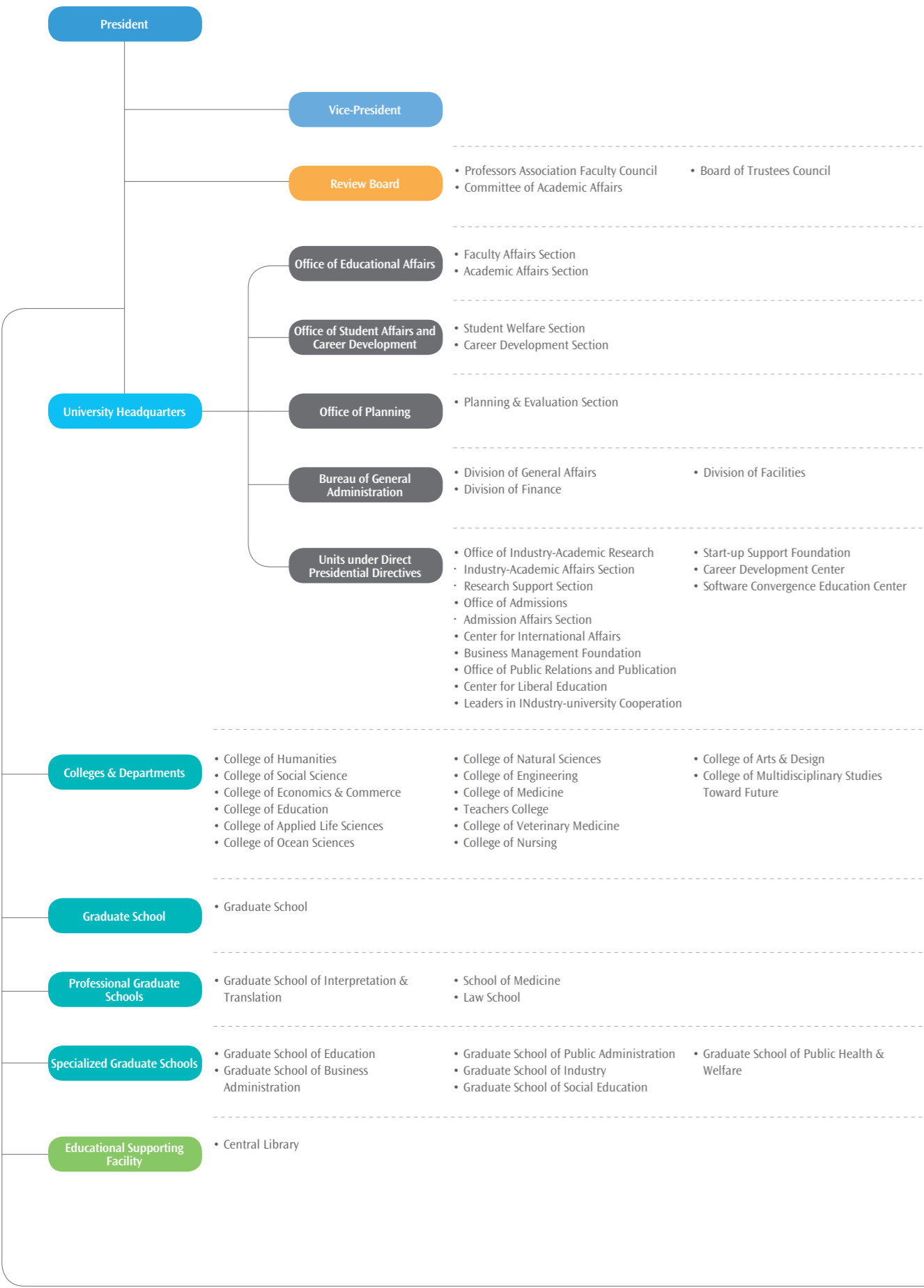
The Human Rights Center was established to protect human rights of university members and promote a university culture where people respect each other. The center has been tasked with restoring the relationship in the university community by counseling and investigating the cases of human right violations, sexual harassment, and sexual abuse, taking protective measures for victims and requesting disciplinary action against perpetrators, and making recommendations and expressing opinions to the relevant agencies. In order to raise awareness of human rights and gender sensitivity, it also offers preventative education on many different types of violence (sexual harassment, prostitution, sexual abuse, and domestic violence), special lectures and camps and stage campaigns with related agencies in and out of campus, conduct the surveys on human rights. The services are available to any members of the university and all counseling is confidential.



◀ LIFE-LONG EDUCATION CENTER

The Life-long Education Center, as a social education institution, has been operating a wide range of programs in five areas, which are employment preparation, qualification, culture and arts, sport for all, and humanities and refinement, so that those participating in the programs can actually experience college culture and life. In addition, the center offers leadership courses for the Women College and the citizen economics college courses for citizens, both of which are commissioned by the Jeju City government. It also opened the leadership courses for Confucian scholars of the College of Confucian Studies commissioned by the Hyanggyo Confucian School Foundation of Jeju Special Self-Governing Province to systematically educate diverse contents such as refinement and expertise required at work or at home and foster a workforce that can meet the needs of the global age.

ORGANIZATION CHART



# CAMPUS MAP

## ARA CAMPUS

Jeju National University, 102 Jejudaehak-ro,  
Jeju-si, Jeju Special Self-Governing Province, 63243  
T. (+82 64) 754-2114

From the Jeju Airport  
► Bus-No.365 (about 40 min)  
► Taxi (about 25 min)

## SARA CAMPUS

61 Iljudong-ro, Jeju-si,  
Jeju Special Self-Governing Province, 63294  
T. (+82 64) 754-4800

From the Jeju Airport  
► Bus-No.316, 325, or 326 (about 40 min)  
► Taxi (about 25 min)



아라캠퍼스

- 101 Main Gate & Guard Post (Information)
- 102 Cultural Exchange Center (Museum)
- 103 Scientific Technology Center for Citrus & Flowers
- 104 Agriculture Business Incubator Center
- 105 Electric Condenser Room
- 106 College of Natural Sciences I
- 107 Subtropical Horticulture Research Institute
- 108 Life Science Technology Innovation Center
- 109 Biotechnology Regional Innovation Center
- 110 Institute for Nuclear Science & Technology
- 111 Sustainable Agriculture Research Institute
- 112 Main Building of College of Applied Life Sciences

- 201 College of Natural Sciences II
- 202 Central Laboratory
- 203 2nd Library
- 204 Global House (Restaurant)

- 301 College of Ocean Sciences I
- 302 College of Multidisciplinary Studies Toward Future
- 303 College of Applied Life Sciences I
- 304 College of Ocean Sciences III
- 305 College of Nursing
- 306 Liberal Arts Lecture Building
- 307 College of Engineering IV
- 308 College of Engineering I
- 309 College of Engineering III
- 310 Small & Medium Business Support Center
- 311 Machine Shop
- 312 College of Engineering II
- 313 College of Ocean Sciences IV

- 401 Administration Building
- 402 College of Social Sciences
- 403 Outdoor Concert Hall
- 404 College of Education I
- 405 College of Education II
- 406 Information Telecommunication Center

- 501 Gymnasium
- 502 Student Union Building
- 503 Athletic Field Viewing Platform
- 505 School Personnel Welfare Building A
- 506 School Personnel Welfare Building B
- 507 School Personnel Welfare Building C
- 508 School Personnel Welfare Building D
- 509 School Personnel Welfare Building E
- 510 School Personnel Welfare Building F

- 601 Ara Muse Hall/Center for International Affairs
- 602 Foreign Language Institute
- 603 Law School
- 604 College of Economics & Commerce I
- 605 College of Economics & Commerce II

- 701 Veterinary Clinic
- 702 Ara Convention Hall
- 703 Lifelong Education Center
- 704 Faculty Hall
- 705 Central Library
- 706 Center for Biomedical Convergence Technology
- 707 Fine Arts Hall
- 708 Golf Driving Range
- 709 School of Medicine
- 710 Bio Convergence Center II
- 713 Integrated General Education Building / Reserve Officers' Training Corps (ROTC)
- 714 Music Hall of the School of Arts & Design
- 783 Veterinary Medicine Education Building
- 785 Anatomy Laboratory
- 788 Digital Central Library

- 801 College of Humanities I
- 802 College of Humanities II
- 804 Center for Fostering Talents
- 805 Student Dormitory III
- 806 Student Dormitory I
- 807 Student Dormitory II
- 808 Student Dormitory IV
- 809 College of Veterinary Medicine
- 810 Student Dormitory V



사라캠퍼스

- 101 Sara Education Hall
- 102 Gymnasium
- 103 Practical Course Education Hall
- 104 Library
- 105 Arts Education Hall
- 106 Computation Education Center & Student Union Hall
- 107 Guest House
- 108 Greenhouse
- 111 Future Creation Center
- 112 Athletic Field Viewing Platform
- 113 Sabong Student Dormitory
- 114 Main Building of Elementary School
- 115 West Building of Elementary School
- 116 Security Office
- 118 Teacher Training Center
- 119 Elementary School / Multipurpose Auditorium



63243 Jeju National University, 102 Jejudaehak-ro,  
Jeju-si, Jeju Special Self-Governing Province, 63243, Republic of Korea

TEL. +82-64-754-2114      FAX. +82-64-755-6130