

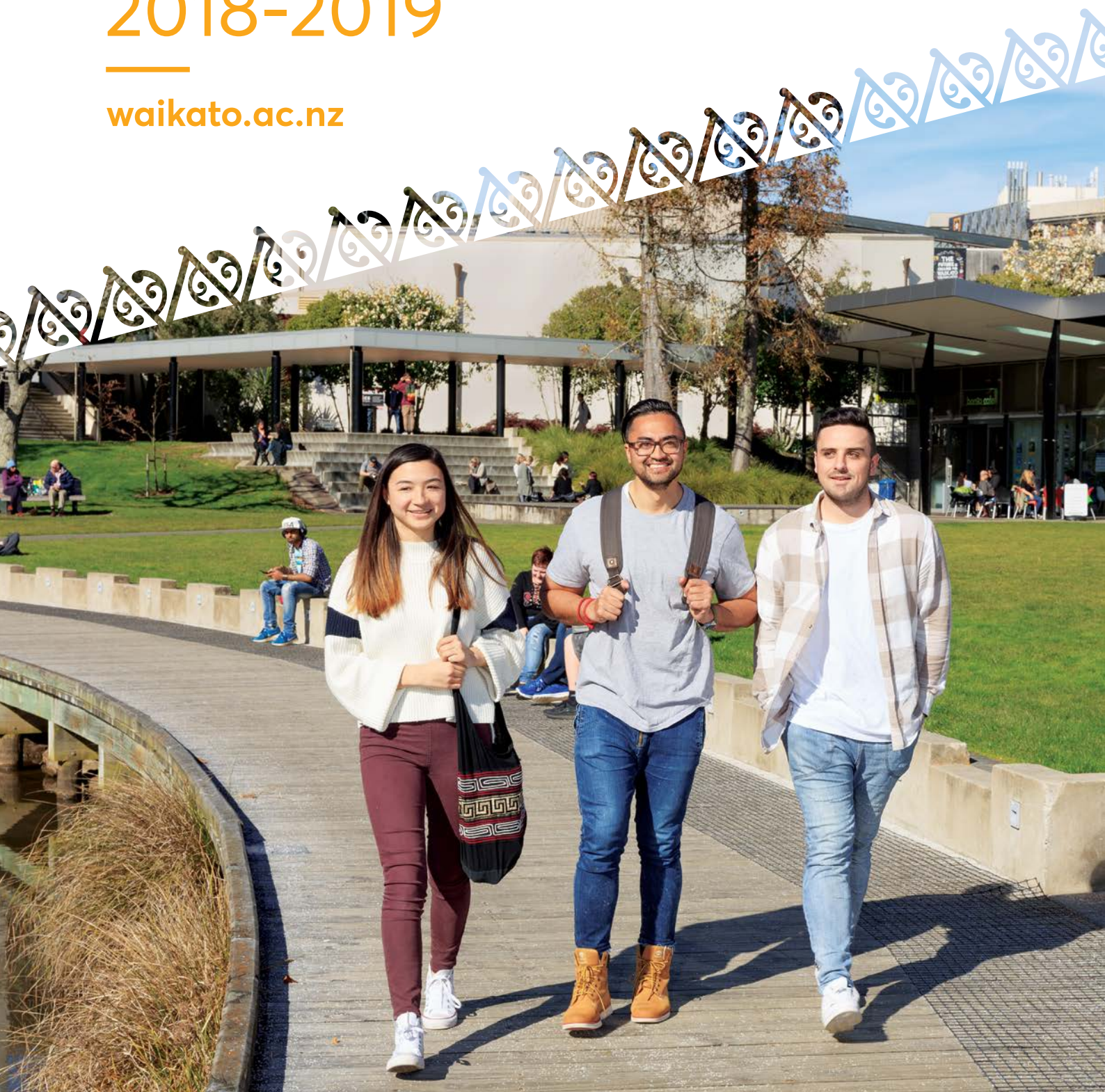


THE UNIVERSITY OF
WAIKATO
Te Whare Wānanga o Waikato

NEW ZEALAND

International Student Prospectus 2018-2019

waikato.ac.nz



Get in touch



+64 7 838 4610



international@waikato.ac.nz



waikato.ac.nz/study/international

Follow



[waikatouni](#)



[@waikatointernational](#)



[@WaikatoUniversity](#)



[UniversityofWaikato](#)



[universitywaikato](#)



[@waikato](#)



Contents

WHY CHOOSE WAIKATO?	2	OUR FACULTIES AND PROGRAMMES	35
New Zealand – the perfect study and lifestyle destination	4	Faculty of Arts & Social Sciences	36
Hamilton and Tauranga – your place to call home	6	Faculty of Computing & Mathematical Sciences	48
University of Waikato	8	Te Kura Toi Tangata Faculty of Education	58
Our facilities	9	Faculty of Health, Sport & Human Performance	64
Student life	10	Te Piringa – Faculty of Law	68
Student support	12	Te Pua Wānanga ki te Ao – Faculty of Māori & Indigenous Studies	72
Accommodation	13	Faculty of Science & Engineering	76
Living costs	15	Waikato Management School	86
International scholarships	16	HIGHER DEGREES BY RESEARCH	96
Internships and industry experience	18	HIGHER DEGREE APPLICATION PROCESS	98
Study abroad	21	YOUR JOURNEY TO WAIKATO	99
Tauranga – an alternative study destination	22	CHOOSE YOUR SUBJECT	100
HOW TO APPLY	23	CAMPUS MAP	105
Application process	23		
Academic entry requirements – Undergraduate	24		
Academic entry requirements – Postgraduate	28		
English language entry requirements	30		
Waikato Pathways College			
English language and foundation programmes	32		

Why choose Waikato?

At the University of Waikato students gain a globally recognised education and enjoy a unique student experience in a country renowned for its stunning landscapes and innovative thinking. Through our strong connections with local, national and global industries, we create opportunities for you to apply your knowledge and skills in real work environments.



World-ranking

We are proud to be in the top 1.1% of the world's universities, announced in the 2018 QS World University Rankings where we have moved more than 100 places in the last four years to be ranked 292. Our research has the highest ranking in New Zealand for quality and impact, tackling issues of national and global importance.



World-class

Our QS Stars five-star rating confirms our status as a world-class university with a high reputation for employment, cutting-edge facilities, internationally renowned research and outstanding teaching and student satisfaction.




Triple Crown status

Our Waikato Management School is a member of an elite group of business schools worldwide that have earned "Triple Crown" status – an international acknowledgement of excellence in business education. Only 1% of the world's business schools have met the strict standards of all three accreditation bodies.

Times Higher Education (THE) World University Rankings 2018

In the popular Times Higher Education (THE) ranking, Waikato has climbed to the 351-400 band, placing us third equal in New Zealand.

- 
- Students from more than 80 nations
 - Accessible academic staff
 - Study, socialise and live on our all-in-one campus
 - 93% of our students are satisfied with their experience at Waikato (International Student Barometer Survey 2017)
 - 14 subjects in the top 250 (QS Subject Rankings 2017) – for individual subject rankings, see the relevant faculty profile



New Zealand – the perfect study and lifestyle destination

Culturally diverse, beautiful, and safe, New Zealand has a work-life balance that is the envy of the world. It's why we consistently lead international quality-of-life surveys.

Beautiful

The scenery and landscapes in New Zealand are stunning and diverse, with mountains, beaches and native bush all within easy travelling distance from the University of Waikato's campuses in Hamilton and Tauranga.

New Zealand's towns and cities have less pollution and congestion than most other parts of the world, and nowhere in New Zealand is more than 128 kilometres from the sea. Visit newzealand.com to learn more.

Affordable

The living costs in New Zealand compare favourably with many other countries, and both Hamilton and Tauranga are considered affordable places to live. There is a range of options for travelling around New Zealand; something to suit every budget. For more information on living costs in New Zealand, visit newzealandnow.govt.nz



Diverse

New Zealand is culturally diverse and home to people from all around the world. The culture, language and traditions of the indigenous Māori people play a vital role in shaping our national identity.

Employment opportunities

New Zealand has experienced a strong economy in recent years. Some skills are in demand and Immigration New Zealand has lists of skills shortages – start your search on newzealandnow.govt.nz/work-in-nz

Prosperous

New Zealand has ranked number one in the world in the Legatum Prosperity Index for six of the past ten years – an index that looks at economic quality, business environment, governance, education, health, safety and security, personal freedom, social capital and natural environment. For more information, visit prosperity.com/rankings

Study to work in New Zealand

If you have completed a qualification in New Zealand, but you do not have a job offer, you may be eligible for a Post Study Work Visa (Open) for a maximum of 12 months. When you have found a job, you can apply for a further visa for up to two or three years. To learn more about the study to work options and the Skilled Migrant Category, visit nzstudywork.immigration.govt.nz

**2ND
SAFEST
COUNTRY**
*2017 Global Peace Index



Hamilton and Tauranga – your place to call home

The Waikato and Bay of Plenty regions of New Zealand offer a wealth of nature-based activities and attractions as well as world-class university education and vibrant city life.

Hamilton city | Waikato region

The University of Waikato's main campus is based in Hamilton, a vibrant and multicultural city immersed in indigenous Māori culture, and home to about 155,000 people. Located on the banks of the Waikato River, Hamilton boasts magnificent parks and gardens. Annual events include Balloons over Waikato and the Agricultural Fieldays, which draw crowds from all over New Zealand and beyond.

Hamilton and the surrounding areas offer world-class bike trails, surf beaches and award-winning restaurants. Hamilton itself is a gateway to many of the beautiful features of the Waikato region, including a world famous left-hand surf break at Raglan and the Hobbiton movie set at Matamata. For skiers, the high quality slopes of Whakapapa and Turoa at Mount Ruapehu are only a few hours' drive away.

As well as a great lifestyle and world-class education, the region boasts one of New Zealand's largest and most varied economies. Waikato is part of New Zealand's 'Golden Triangle', an area bound by Auckland, Hamilton and Tauranga that makes up over half of the country's gross domestic product and fills over 50 per cent of all jobs in New Zealand.



Hamilton city / Waikato River



Mount Maunganui, Tauranga

Tauranga city | Bay of Plenty region

The University of Waikato has been providing tertiary education in Tauranga for many years, and is now building a state-of-the-art campus in the heart of Tauranga city, due to open in 2019 (see page 22).

Tauranga is New Zealand's fifth largest and fastest-growing city and one of New Zealand's most sought-after locations. Home to an estimated 125,000 people, the cosmopolitan city is well-known for its blue skies, warm climate, stunning harbour and relaxed lifestyle.

The Bay of Plenty region boasts spectacular beaches, rivers, wineries, great shopping and cafes, and is bustling with cultural, sporting and recreational activities.

Tauranga has New Zealand's largest export port and the central city is currently undergoing a transformation, including the new University campus. Thriving industries include horticulture and kiwifruit export.

Whether you want to dine, shop, explore the captivating culture and history, or relax in the stunning landscape, Tauranga is waiting for you.

University of Waikato

The University of Waikato is ambitious and innovative. Our world-leading researchers and professional support staff are friendly and approachable, and committed to supporting you throughout your study journey.

Through our partnerships with local, national and global industries, we create opportunities for you to apply your knowledge and skills in real work environments. As a graduate of the University of Waikato you will be confident that you have the professional and personal skills to be successful in this fast-paced world.

Note: Not all degrees have a work placement component.



MORE THAN **2000**
INDUSTRY PLACEMENTS
EACH YEAR **NOW HIRING**



TRIPLE CROWN ACCREDITED
MANAGEMENT SCHOOL

RESEARCH LEADER IN
MĀORI &
INDIGENOUS CULTURE



MORE THAN **12,000**
STUDENTS
2000 
INTERNATIONAL
STUDENTS 

Our facilities

Our first-class facilities provide a student-centred learning environment designed to give you the support you need while you study with us.

Student Centre

Our multi-functional Student Centre on the Hamilton campus is equipped with a café, library services, computer facilities and quiet study areas. The Centre is a central hub for student support, combining traditional library resources with hi-tech IT facilities.

For information about student support services available in Tauranga, visit uwt.waikato.ac.nz/student-links

Gallagher Academy of Performing Arts

The Gallagher Academy of Performing Arts on the Hamilton campus is specifically designed for performing arts, equipped with a world-class concert chamber and a range of teaching and performance spaces.

Cyber Security Lab

Situated in the Faculty of Computing & Mathematical Sciences in Hamilton, the Cyber Security Lab was one of the first such labs in New Zealand. The lab's focus is to develop solutions that enable users to know their data provenance, and to preserve the privacy and utility of data.

The University of Waikato Adams Centre for High Performance

The Adams Centre in Tauranga is a cutting edge, world-class facility for the nation's best athletes and contains all the essential elements required to service elite athletes and prepare them for competition on the world stage. It is equipped with the very latest in sports science and research capability. A full suite of sports treatment services is also provided within the centre, including physiotherapy, massage and podiatry.

Sport science lab

Located at the Avantidrome (Cambridge), the University of Waikato Sports Science laboratory provides specialist fitness testing services for recreational and high performance athletes, sports teams and schools.

Research institutes

We have seven research institutes that support world-class research in environmental science, demography and economic analysis, business and leadership, professional learning and development, education, and Māori and indigenous development.



Gallagher Academy of Performing Arts

Student life

At Waikato, we want you to be an active member of our student community, made up of a diverse group of people with different cultures, ethnicities and ideas. With our range of clubs, social events and our inclusive approach, you will be well-equipped to explore your interests, experience life-changing moments and make life-long friends.

Join a club

Students at Waikato have many talents and interests, catered for by the wide range of clubs and student organisations on campus. With more than 40 student clubs, there is something for everyone.

Sports and recreation

UniRec, our on-campus gym, is one of the best-equipped gyms in the region with weights and cardio equipment, group exercise classes, Endless Pools™, squash courts and a sports hall.

Sports facilities

Waikato has a range of sports facilities on campus available for your use, including an outdoor 50-metre swimming pool and diving pool (open in summer months only), tennis and netball courts, sports fields and an indoor cricket facility.

Social sport

Social sport is a great way to make new friends with similar interests. Social sport offers indoor and outdoor leagues in netball, touch (a social form of rugby) and six-a-side soccer (football).

Facilities on campus

- Library
 - Student centre
 - Accommodation
 - Gym and recreation centre
 - Outdoor pool
 - Sports fields, tennis and squash courts
 - Cafés
 - Banks
 - Pharmacy
 - Doctors
 - Chapel and prayer rooms
 - Post office
-





“ I didn't know what to expect from Hamilton before arriving at the University of Waikato, but since arriving I've had the time of my life discovering all the campus has to offer. I particularly love the beautiful trees and lakes I walk by every day on the way to my classes.

Another highlight is the sense of community. I've been involved in volunteering for the Waikato Students' Union (WSU), where I've met all sorts of people from across the campus. These memories make me feel like I belong at Waikato and I'm extremely happy here. ”

– **Lisa Adrien, Netherlands**
Bachelor of Social Sciences
(Sociology and Human Development)

Student support

Our students tell us we are one of the friendliest and most supportive universities in New Zealand. Our dedicated team provides you with the advice and support you need to ensure your time at Waikato is successful.

International Student Services Office

The International Student Services team is available to assist you during your time at the University of Waikato. They oversee:

- International orientation for new students
- Immigration requirements and student visa renewals
- Medical and travel insurance
- Domestic and international government scholarships
- Study abroad and exchange support
- International student events
- Buddy programme.

For more information visit waikato.ac.nz/international/international-office/international-student-support

Academic support

The tutors at Student Learning can help you with assignment writing, time management, notetaking skills, and test and exam preparation. Join a workshop, have a face-to-face consultation or take a look at their online services at waikato.ac.nz/students/student-learning

Careers advice

Career Development Services provide free advice and support to current students and recent graduates. The Careers team can assist with career planning, writing job applications, and interview preparation.

waikato.ac.nz/students/careers

Disability Support service

Disability Support provides a range of services including lecture materials, learning support, alternative test and exam arrangements, access to assistive technology, ergonomic furniture, hearing equipment and much more.

waikato.ac.nz/student-life/student-services

Health and wellbeing

Waikato's team of doctors, nurses and counsellors are dedicated to supporting the health and wellbeing of all students. All standard General Practice (GP) doctor and nurse services are available at the on-campus Health Centre, along with a free and confidential counselling service for those students seeking professional support. The Hamilton campus also has a pharmacy.

waikato.ac.nz/student-life/student-services

IT and computer labs

When you're fully enrolled, you will be provided with a user-name and a computer account to access free wi-fi and log on to any computer on campus.

Waikato Students' Union

The Waikato Students' Union (WSU) is a strong collective voice for students on campus and nationally. WSU organises activities on campus such as Orientation Week, Clubs' Day and musical performances. For more information visit wsu.org.nz



Accommodation

Many students choose to live on campus in Halls of Residence. Others choose to live in nearby residential suburbs in flats with other students, or with their families. Whatever your choice, accommodation in Hamilton is affordable and close to campus.

On campus in Hamilton

	College Hall	Student Village	Bryant Hall	Orchard Park
Fully catered per week cost	NZ \$355	NZ \$312	NZ \$312	N/A
Self-catered	NZ \$180	NZ \$180	NZ \$165	NZ \$155
Deposit	NZ \$400	NZ \$400	NZ \$400	NZ \$400
Administration fee	NZ \$100	NZ \$100	NZ \$100	NZ \$100
Activity fee	NZ \$100	NZ \$100	NZ \$100	NZ \$100
Facilities provided	Free WiFi, library, TV rooms, leisure centre, bike and motorbike shed.	Free WiFi, library, TV rooms, leisure centre, bike and motorbike shed.	Free WiFi, library, TV rooms, leisure centre, bike and motorbike shed.	Free WiFi, recreation room, disability access, bike and motorbike shed.





Fully-catered accommodation

This option provides you with your own bedroom and shared bathroom and dining facilities with other students. Three meals a day, seven days a week are provided.

Self-catered accommodation

This style of accommodation is most suitable for students returning for their second year of study, or mature students. Accommodation is shared with up to five other students (each in single bedrooms) and cooking and cleaning is shared between the group. For more information on accommodation and to apply, visit waikato.ac.nz/go/accommodation

Off campus

Homestay

Homestay accommodation is ideal for students who prefer a family-oriented lifestyle. Homestay (living with a local family in a private home) is compulsory for international students under the age of 18 years. You will be provided with your own room and most meals are provided by the homestay family. Homestays are located on a bus route to the campus. The cost of homestay accommodation is NZ\$266 a week, inclusive

of food, power and laundry, but does not include telephone, internet and transport costs.

A non-refundable application fee of NZ\$330 and the first four weeks of homestay fees (NZ\$1,064) must be paid before a homestay placement can be made.

Flatting

Flatting is when you share accommodation with other students in a private house located off campus. The approximate cost of flatting per week for each person (based on recent figures with 2-4 flatmates) is between NZ\$100- \$140 for a room, plus food and utilities. Prior to arrival in New Zealand it is possible to search online for flats or available rooms. We recommend you arrive 1-2 weeks before semester starts in order to find suitable accommodation.

Renting

You can rent a house in a nearby residential suburb for you and your family for approximately NZ\$300-\$450 a week for a three bedroom home, excluding utilities and food. Prior to arrival in New Zealand it is possible to search online for houses available for rent.

Search for accommodation online at:

studentflat.co.nz

trademe.co.nz/property

Living costs

Basic weekly expenses

Halls of Residence accommodation	NZ\$355.00
Food This will vary depending on whether you choose the self-catered option or the fully-catered option.	Included in fully-catered
Internet Free access in bedrooms.	Included
Mobile phone This will vary depending on whether you use prepay or contract and how much you use your phone.	NZ\$7.50
Transport This will vary depending on your transport choice. This cost is based upon owning a private vehicle.	NZ\$40.00
Entertainment This will vary depending on what you decide to do for entertainment.	NZ\$50.00
Total weekly cost	NZ \$452.50

Annual or one-off costs

Halls of Residence deposit Includes \$100 non-refundable administration fee and \$100 non-refundable activity fee.	NZ\$600.00
Student Services Levy This is based upon a levy for full-time study.	NZ\$500.00
Textbooks, course readings and printing This will vary depending on your programme of study and how much printing you do.	NZ\$1,000.00
University internet Free 2GB per month with the ability to purchase additional data from Lightwire.	Included
Parking Based on a one-year Halls of Residence permit.	NZ\$120.00
Clothes and toiletries This will vary depending on the type of clothing and toiletries you purchase.	NZ\$800.00
Total annual cost	NZ \$3,020.00

Other costs

Airline tickets This will vary depending on what country you are departing from.	NZ\$2,000.00 (on average)
Medical and travel insurance Based on 12 months of cover from our recommended service provider, StudentSafe University.	NZ\$620.00
Visa This will vary depending on your country of citizenship and visa type.	NZ\$270.00
Total other cost	NZ \$2,890.00

For information for families and budgeting, visit waikato.ac.nz/study/costs/cost-of-living

**All fees quoted in this publication are 2018 fees and are subject to change. Tuition fees in this brochure are indicative only. Actual fees are calculated on the basis of your choice of papers. Fees are subject to annual increases.*

International scholarships

For information on the University's international scholarships, visit waikato.ac.nz/study/international/scholarships

University of Waikato International Excellence Scholarships

This scholarship is awarded to students who can demonstrate academic excellence. The University of Waikato International Excellence Scholarship contributes up to NZ\$10,000 towards tuition fees for international students undertaking undergraduate or postgraduate-taught studies. The scholarship is available to students from selected countries only.

Up to
10,000
NZD

University of Waikato Doctoral Scholarships

University of Waikato Doctoral Scholarships are open to high-achieving full-time international doctoral candidates. Successful candidates will receive up to \$22,000 per year, payable in monthly instalments, and the domestic tuition fees for enrolment in doctoral studies during the term of the scholarship. Applications will be considered in three rounds per year and the applications are submitted as part of an application for doctoral enrolment. Students must submit a complete Application to Enrol by the specific deadline in order to be considered.

Up to
66,000 NZD
+ domestic
tuition fees

High Achievement Scholarship

The High Achievement Scholarship is open to all international students enrolling in the second year of a full-time undergraduate programme. There is no application process. Students who achieve a B+ grade average over the first year of a full-time undergraduate programme at the University of Waikato will be automatically awarded the High Achievement Scholarship for their second year. The scholarship is equivalent to a 15% discount on full-international student tuition fees for the second year of undergraduate study.

15%
discount

External scholarships

New Zealand Aid Scholarships

The New Zealand Ministry of Foreign Affairs and Trade (MFAT) provides scholarships for people from developing countries and are designed to foster and build potential leaders, as well as equipping individuals with skills and knowledge to benefit their country. New Zealand scholarships are available to people from the Pacific and some countries in Asia, Latin America, the Caribbean and Africa.

For more information go to mfat.govt.nz/aid-and-development/scholarships

New Zealand International Doctoral Research Scholarships (NZIDRS)

Funded by the New Zealand Government and administered by Education New Zealand, the scholarships provide financial support for international students undertaking doctoral degrees by research in New Zealand universities. Scholarships are awarded for three years of full-time study for a doctoral research degree.



“ I chose the University of Waikato for a number of reasons, including the reputation of the computer science programme. Being awarded the International Excellence Scholarship was a nice reward for the effort I put into my studies and has set a standard for me to work towards, also motivating me to maintain my grades. ”

– **Kiana Quynh Anh Pham, Vietnam**
Bachelor of Science (Computer Science)
International Excellence
Scholarship recipient

Internships and industry experience

At Waikato we encourage our students to gain work experience while studying. Internships and industry placements allow you to apply what you have learned in lectures and tutorials to real-life situations – this gives you an advantage when you apply for a permanent position after graduation.

We have staff dedicated to finding work placements for students, and we offer a wide range of papers that have internship and industry experience components. The University of Waikato has close links with many businesses and organisations that are willing to host and work with students during their study years.

Case studies

Many of our programmes require students to develop a case study on a particular business issue on behalf of a local organisation. Students get the opportunity to learn first-hand how an organisation functions, work on a particular campaign, run an event, or develop a strategy.

Benefits of industry experience

- Apply your skills and knowledge in a workplace setting
- Develop your industry connections
- Increase your professional networks
- Increase your chances of being offered a permanent position
- Familiarise yourself with New Zealand's workplace culture.

Co-operative Education Unit (Faculty of Science & Engineering)

The Co-operative Education Unit in the Faculty of Science & Engineering places approximately 200 students on industry placements every year for students enrolled in Bachelor of Science (Technology) (BSc(Tech)) and Bachelor of Engineering (Honours) (BE(Hons)) degrees. A total of 12 months' work experience is a component of the BSc(Tech), and 800 hours are required for the BE(Hons). Staff in the Unit support students during their placements to ensure they are fulfilling their degree requirements. Students are frequently offered permanent jobs following their work placements.

Waikato Management School Centre for Internships

The Waikato Management School Centre is dedicated to providing all of its students with the opportunity to gain real-life business/work-integrated experience with an organisation based in New Zealand or overseas.

- Students complete an authentic workplace project
- Interns are accepted from all the management disciplines
- Students are guided by an organisational mentor
- Students can apply what they have learned in the classroom to a real business project.

Our interns have been placed in small and medium sized businesses (SMEs), major corporates, not-for-profit organisations (NFPs), and local and central government.

Through placing more than 360 top-quality interns we have developed relationships with hundreds of organisations in New Zealand and offshore, including the USA, UK, Belgium, Germany, Malaysia and India.

Employability Plus Programme

The Employability Plus Programme (EPP) is a new initiative that gives University of Waikato students the opportunity to gain work-ready skills through volunteer activity. Students are recognised for the extra work they do so they can stand out when job hunting by gaining the practical skills and experience sought by prospective employers.

waikato.ac.nz/student-life/student-services/employability-plus-programme





Study abroad

If you are an international student studying at another university, consider studying for one or two semesters at Waikato and credit your papers to your home-country degree. We call this "study abroad" and believe it adds value to your qualification and gives you the opportunity to explore another country and its culture.

You may select papers (units or subjects) from across the University's degrees, so long as you meet the prerequisites. You can choose papers that complement your home degree, or offer a New Zealand or South Pacific perspective.

Prospective study abroad and exchange students must have:

- Completed at least two semesters of full-time study and be currently enrolled at a recognised tertiary institution.
- Achieved a minimum of B average. Applicants from countries where it is not possible to calculate a grade point average must have good academic standing.

You can enrol directly with the University of Waikato, or use the services of a study abroad agency.

If you are a Study Abroad student you pay a set tuition fee which includes tuition and ancillary charges (health and building levy, student union and academic transcript) but excludes medical and travel insurance and costs for field trips and text books.

For more information please email
studyabroad@waikato.ac.nz



Tauranga – an alternative study destination

The University of Waikato in Tauranga offers a growing range of undergraduate and postgraduate programmes in one of New Zealand's most sought-after locations – combining beautiful beaches, a city lifestyle and university study.

In Tauranga, the University currently shares a campus with the Toi Ohomai Institute of Technology, and is currently constructing a purpose-built campus due for completion in 2019. The new campus will be a vibrant and engaging multipurpose space where students, researchers, the community and industry can work together in the heart of the fastest growing region in New Zealand. The University's Coastal Marine Field Station, part of the Environmental Research Institute, and the Adams Centre for High Performance are also located in Tauranga.

Study options

The following is an example of some of the programmes the University of Waikato is proposing to offer from 2019 and beyond:

Undergraduate study

- Bachelor of Business
 - Accounting, Finance, Marketing, Strategic Management (*Toi Ohomai pathway available*)
- Bachelor of Engineering with Honours*
 - Civil Engineering, Electronic Engineering, Mechanical Engineering
- Bachelor of Science
 - Applied Computing, Ecology and Biodiversity, Environmental Sciences, Aquaculture (*Toi Ohomai pathway available*)

*Students will study at both the Hamilton and Tauranga campuses

- Bachelor of Social Sciences
 - Digital Learning, Education and Society, Human Development, Māori and Indigenous Studies, Political Science, Psychology, Social Policy
- Bachelor of Social Work
- Bachelor of Teaching
 - Early Childhood, Primary
- Bachelor of Arts
 - Education and Society, Human Development, Psychology, Social Policy
- Diploma in Law

Postgraduate study

- Graduate Diploma in Accounting**
- Graduate Diploma in Finance**
- Graduate Diploma in Marketing**
- Graduate Diploma in Psychology
- Graduate Diploma of Teaching (Secondary)
- Postgraduate Diploma in Management Studies
- Postgraduate Diploma in Development Studies
- Master of Health, Sport and Human Performance
- Master of Education
- Master of Educational Leadership
- Master of Information Technology

**Offered jointly with Toi Ohomai

Find more information about programmes in Tauranga by emailing recruitment@waikato.ac.nz or visiting uwt.waikato.ac.nz



How to apply

Application process

1

Choose your preferred degree

For advice on your degree selection, email international@waikato.ac.nz

2

Check that you meet the academic and English language requirements (pages 24 – 31).

If you aren't eligible, we can provide you with an offer for a pathway programme.

3

Apply online at waikato.ac.nz/enrol

Or through one of the University's authorised overseas representatives. A full list is available at waikato.ac.nz/study/international/education-agents

4

Complete all sections of the online application form.

5

Complete any additional application requirements

Research degree applicants (PhD, MPhil, DMA, EdD, SJD) are required to complete a supplementary form, which can be found in the online application portal.

Teacher Education applicants are required to complete the Teacher Education Supplementary form.

Bachelor of Design applicants may be asked to submit a portfolio of work.

Note: Applying for a research degree generally takes longer than applying for taught programmes. Acceptance into a research degree is also subject to the availability of an appropriate supervisor. Information on the PhD application process can be found on page 98.

Recommended dates for applications

- o **March Intake 2018:**
apply by 1 December 2017
- o **July Intake 2018:**
apply by 1 May 2018
- o **November Intake 2018:**
apply by 1 September 2018

We recommend you submit your application before these dates, in order to have sufficient time to secure flights, accommodation and a visa.

If you submit your application after these dates, we will still process it as quickly as possible.

Academic entry requirements

Undergraduate

Students who satisfy the entry requirements will receive an offer of place.

Entry requirements can be found at waikato.ac.nz/study/enrolment/undergraduate-international

Entrance guidelines for students from selected countries

New Zealand	See NCEA University Entrance criteria at waikato.ac.nz/study/enrolment/undergraduate
University of Waikato Foundation Studies (Certificate in Foundation Studies – CAFS)	<p>The Certificate of Attainment in Foundation Studies – no less than a C grade in any subject plus a B grade or better in two English subjects.</p> <p>Entry to the Bachelor of Engineering (Hons) requires an overall B grade average, plus a B grade or better in two English subjects and depending on the area chosen:</p> <p>Civil, Electronic, and Mechanical</p> <ul style="list-style-type: none">• a B grade in Bridging Physics and• a B grade in Bridging Calculus and• at least a C grade in every other subject. <p>Chemical and Biological, Environmental, Materials and Process</p> <ul style="list-style-type: none">• a B grade in Bridging Chemistry• a B grade in Bridging Physics and• a B grade in Bridging Calculus and• at least a C grade in every other subject. <p>Software Engineering</p> <ul style="list-style-type: none">• a B grade in Bridging Calculus and• at least a C grade in every other paper. <p>Entry to the Bachelor of Laws requires at least a B average and a B in two English subjects.</p>
New Zealand foundation programmes	Successful completion of any of the foundation certificates offered by a New Zealand university.
Other foundation programmes	<p>The University of New South Wales Foundation Year – a minimum GPA of 6.5 (C grade) with an 8.0 in Academic English. Professional programmes such as law and engineering will require higher passes in prerequisite subjects.</p> <p>The University accepts applicants from a number of foundation programmes offered in New Zealand, Australia, the UK and elsewhere.</p> <p>Please contact the University to find out if your programme is accepted for entry to Waikato.</p>
Advanced Placement International Diploma	Grades of 3 or higher in each of at least four subjects in the Advanced Placement International Diploma (APID).

International examinations taken in New Zealand (Cambridge International and Advanced International Certificate of Education)	A minimum of 120 points on the UCAS Tariff at A or AS level other than the General Paper, including at least three subjects (other than Thinking Skills) in which no grade is lower than D. Standards apply regarding literacy and numeracy and applicants should refer to waikato.ac.nz/study/enrolment/undergraduate
GCE Advanced levels (outside UK)	Applicants must achieve a minimum of 6 points taken from three subjects, achieving a minimum grade of C in at least one subject. Points calculated as follows: A = 5, B = 4, C = 3, D = 2, E = 1. AS Level grades are not included.
International Baccalaureate (taken in NZ or overseas)	Completed International Baccalaureate (IB) Diploma with a minimum of 24 points.
Australia	Australian Tertiary Admission Rank (ATAR) of 70 or QLD OP of 14 score. This also applies to students studying Australian qualifications outside Australia, such as the South Australian Matriculation (SAM) and the Western Australian Certificate of Education (WACE).
Bangladesh	Successful completion of one year of study at a recognised institution of university standing.
Brazil	Successful completion of one year of study at a recognised institution of university standing.
Canada	Ontario Secondary School Diploma – 65% overall average grade. Quebec Grade 12 Certificate – average of 60% across six subjects (including English).
Chile	Successful completion of one year of study at a recognised institution of university standing.
China	Students who met the Tier One university Gaokao cut-off score for their province will have met the academic entry requirements; or Two years' successful academic study at a recognised junior college; or Successful completion of one year of study at a recognised institution of university standing.
Colombia	Successful completion of Tecnólogo Especializado at a recognised tertiary institution; or Successful completion of one year of study at a recognised institution of university standing.
Fiji	Fiji Form 7 – an aggregate over 4 subjects of 250 marks out of 400 with a minimum of 50 in English. University of the South Pacific (USP) Foundation Year in either Science or Social Science with a grade average of B or higher and no grade lower than C in the 8 required courses.
France	Successful completion of Diplome du Baccalaureat.
Germany	Successful completion of Abitur or Zeugnis der Allgemeinen Hochschulreife.
Ghana	West African GCE Advanced Level examinations with at least three C grades. All passes must be gained in the same sitting.
Hong Kong	Hong Kong Diploma of Secondary Education (HKDSE) with at least three subjects achieved at Level 4 or better including English Language and two elective subjects.
India	Achieve an overall average of 75% in the Indian School Certificate (ISC), or the All-India Senior School Certificate (AISSC), with a minimum of 60% in English.

Indonesia	<p>An overall average of 8.5 or more in SMA; or</p> <p>Successful completion of one year of study at a recognised institution of university standing; or</p> <p>Successful completion of a Diploma II from a recognised tertiary institution.</p>
Japan	<p>Completion of a high school diploma with a B average; or</p> <p>One year of successful study at a Japanese university; or</p> <p>Completion of a Junior College Diploma of two or three years' duration.</p>
Korea	National College Scholastic Aptitude Test (CATS) with a minimum score of 250.
Kuwait	Successful completion of General Secondary Education Certificate with an overall average of 80% (calculated on academic subjects only).
Malaysia	<p>A minimum of 6 points obtained from at least three Sijil Tinggi Persekolahan Malaysia (STPM) subjects. Points calculated as follows: A=5, A- =4, B+ =4, B=3, B- =2, C+ = 2, C=1; or</p> <p>Unified Examination Certificate (UEC) with a maximum of 18 points over 6 academic subjects.</p>
Nigeria	West African GCE A Level with at least 3 C grades. All passes must be obtained in the same sitting.
Norway	Successful completion of the Vitnemal fra den Videregaende Skole (Certificate of Upper Secondary Education).
Oman	Successful completion of one year of study at a recognised institution of university standing.
Pakistan	Successful completion of one year of study at a recognised institution of university standing.
Saudi Arabia	<p>Successful completion of a diploma at a recognised College of Technology; or</p> <p>One year of successful study at bachelors level, at a recognised institution of university standing.</p>
Singapore	A minimum of 6 points obtained from three H2 Level subjects with at least one grade of C. Points calculated as follows: A=5, B=4, C=3, D=2, E=1.
South Africa	Successful completion of the National Senior Certificate with confirmation of eligibility to enrol in a bachelor's degree at a South African university.
South Pacific countries (not individually listed)	South Pacific Form Seven Certificate (SPFSC) with a minimum of three B grades. All students must have Grade 5 or better in PSSC English and Grade 6 or better in PSSC Maths.
Sri Lanka	A minimum of 6 points obtained for three Advanced Level subjects (excluding the General Paper). Points are calculated as follows: A=5, B=4, C=3, S = 1.
Taiwan	<p>One year of university study; or</p> <p>Senior high school and a two-year Junior College Diploma; or</p> <p>Junior high school and a five-year Junior College Diploma.</p>
Thailand	<p>Successful completion of a recognised foundation studies programme; or</p> <p>One year of successful study at a recognised institution of university standing.</p>

Tonga	Successful completion of Tonga National Form Seven; or South Pacific Form Seven Certificate (SPFSC) with a minimum of three B grades. All students must have Grade 5 or better in PSSC English and Grade 6 or better in PSSC Maths.
UAE	Successful completion of a Higher Diploma from a recognised Higher College of Technology; or One year of successful study at bachelors level at a recognised institution of university standing.
United Kingdom (GCSE)	A minimum of 6 points obtained for three A level subjects with at least one grade of C. Points calculated as follows: A=5, B=4, C=3, D=2, E=1.
USA	High School Diploma plus SAT-1 (taken in grade 12) score of at least 1000 combining Critical Reading and Mathematics scores; or High School Diploma and ACT scores with at least 24 in every section.
Vietnam	Certificate of Secondary School Graduation (Bang Tot Ngiep Trung hoc Pho thong) with 8 out of 10.

Recognised tertiary institutions and universities are those acknowledged as offering programmes equivalent to those of Waikato. To find out whether your institution or university is recognised, please contact international.office@waikato.ac.nz



Academic entry requirements

Postgraduate

Coursework (taught) degrees

Degree type	Definition	Entry requirement
Masters <ul style="list-style-type: none"> by dissertation and coursework by coursework only 	<p>This degree consists of either:</p> <ul style="list-style-type: none"> a dissertation and coursework coursework only. <p>This degree can be either in the same area as undergraduate study or in a new area of study. Depending on previous study and chosen subject, a masters may take one, one and a half, or two years to complete.</p>	<p>A recognised bachelors degree with a B average, and a B average in a relevant subject if required. Some faculties/schools require an honours degree (to demonstrate research capacity).</p> <p>Where the above requirements are not met, further study in a lower level programme may be required first.</p>
Bachelors with honours	<p>This is a one-year advanced programme for high achieving students, continuing a major subject in a bachelors degree. This degree may be taken either as part of a bachelors degree or on its own.</p>	<p>A qualification considered equivalent to a New Zealand bachelors degree with a B average, in a major in a relevant area.</p>
Postgraduate diploma (one-year)	<p>This programme comprises graduate-level papers and normally takes one year. It meets the needs of graduates who wish to deepen their knowledge of the subject they studied at undergraduate level.</p>	<p>A recognised bachelors degree, normally in the same subject area.</p>
Postgraduate certificate (six months)	<p>This programme comprises graduate-level papers and normally takes six months. It meets the needs of graduates who wish to deepen their knowledge of the subject they studied at undergraduate level.</p>	<p>A recognised bachelors degree, normally in the same subject area.</p>

Research degrees

Degree type	Definition	Entry requirement
Masters by thesis	<p>This degree consists of a research project in the form of a research or creative thesis.</p>	<p>A recognised bachelors degree with a B average, and a B average in a relevant subject if required. Some faculties/schools require an honours degree (to demonstrate research capacity). Where the above requirements are not met, further study in a lower level programme may be required first.</p>
Master of Philosophy	<p>A Master of Philosophy is one-year programme of original research under supervision, resulting in a thesis.</p>	<p>A bachelors with honours or masters degree with at least Second Class Honours (First Division) or Distinction is required.</p>

Degree type	Definition	Entry requirement
Doctor of Musical Arts (DMA)	The DMA is a research degree. Candidates undertake supervised research comprising musical performance in the form of works of artistic and creative merit supported by a written research thesis of 50,000 words.	A qualification considered equivalent to a masters degree in Music with at least Second Class Honours (First Division). Candidates must also audition successfully on an applied instrument or voice.
Doctor of Education (EdD)	Supervised professional research degrees are designed for candidates with relevant professional experience. These degrees require an initial year of coursework to be successfully completed prior to the development and submission of a supervised thesis.	A qualification considered equivalent to a New Zealand bachelors degree with honours or masters degree with at least second class honours (First Division) or distinction is required. Entrance is at the discretion of the Postgraduate Studies Committee.
Doctor of Juridical Science (SJD)	Supervised professional research degrees are designed for candidates with relevant professional experience. These degrees require an initial year of coursework to be successfully completed prior to the development and submission of a supervised thesis.	A qualification considered equivalent to a New Zealand bachelors degree with honours or masters degree with at least second class honours (First Division) or distinction is required. Entrance is at the discretion of the Postgraduate Studies Committee.
PhD	A PhD consists of research carried out under the supervision of at least two staff members. The thesis, which must be the candidate's own work, is required to present the case for the research, outline the research undertaken, and the findings and conclusions of that research.	A bachelors with honours or masters degree with at least Second Class Honours (First Division) or Distinction is required.

Preparation for postgraduate study

These programmes are designed as bridging programmes for students who wish to undertake postgraduate study in an area different from their prior qualification(s).

Qualification type	Definition	Entry requirement
Graduate certificate (six months)	A graduate certificate is for graduates who do not have a substantial background in a particular subject in their undergraduate degree. A graduate certificate allows students to prepare for postgraduate study in that subject or to add a specialisation that is different from their major. The course comprises undergraduate papers.	A recognised bachelors degree.
Graduate diploma (one year)	A graduate diploma is for graduates who do not have a substantial background in a particular subject in their undergraduate degree. A graduate certificate allows students to prepare for postgraduate study in that subject or to add a specialisation that is different from their major. The course comprises undergraduate papers.	A recognised bachelors degree.

English language entry requirements

The University teaches in the English language and requires all students to demonstrate proficiency in written and spoken English.

The University's English language entry requirements are set out below. Students who do not meet the minimum requirements will normally be made an offer, conditional on meeting the English language requirements.

If English was the language of instruction in the last two years of secondary/tertiary studies, an English language waiver may be considered. Students need to provide evidence of this at the time of application.

Exceptions at undergraduate level

Students who have achieved the following English scores in their high school qualifications do not need to provide additional evidence of English language proficiency:

Country	Score and Qualification
Malaysia	UCLES English O levels (English 1119) with a grade B or above.
Norway	Grade 4 or higher in English Level 1 from the Norwegian first level/year of Upper Secondary School (Videregående Skoler).
Sweden	VG (Pass with distinction) or MVG (Pass with honours) grade in Level B English language from senior high school.

Minimum English language requirements

Degree	IELTS (Academic)	iBT (internet based) TOEFL	Pearson PTE Academic	Waikato Pathways
Undergraduate (all courses except those listed in the column below)	6.0 overall (no band less than 6.0).	79 – 80 with a score of 20 in writing.	57 with no less than 57 for each communicative skill.	Successful completion of Level 7 with a B grade average in the Certificate of Attainment in Academic English (CAAE) programme.
Undergraduate <ul style="list-style-type: none"> Arts Computer Graphic Design Computing and Mathematical Science Environmental Planning Health, Sport & Human Performance Māori and Pacific Development Science majors in the Faculty of Computing & Mathematical Sciences Social Sciences 	6.0 overall (no less than 6.0 in writing).	79 – 80 with a score of 20 in writing.	57 with no less than 57 for writing.	Successful completion of Level 7 with a B grade average in the Certificate of Attainment in Academic English (CAAE) programme.

Degree	IELTS (Academic)	iBT (internet based) TOEFL	Pearson PTE Academic	Waikato Pathways
Undergraduate <ul style="list-style-type: none"> • Bachelor of Teaching • Bachelor of Education • Graduate Diploma in Teaching 	7.0 overall (no band less than 7.0).			
Bachelor of Laws (LLB)	6.5 overall (no less than 6.0 in writing).	100 with a score of 22 in writing.	64 with no less than 57 for writing.	Successful completion of Level 8 with a B grade average in the Certificate of Attainment in Academic English (CAAE) programme.
Bachelor of Social Work	6.5 overall (no band less than 6.5).	Considered on a case-by-case basis.	64 with no less than 64 for each communicative skill.	Successful completion of Level 8 with a B grade average in the Certificate of Attainment in Academic English (CAAE) programme.
Degree	IELTS (Academic)	iBT (internet based) TOEFL	Pearson PTE Academic	Waikato Pathways
Postgraduate (coursework)	6.5 overall (no less than 6.0 in writing).	90 with a score of 22 in writing.	65 with no less than 58 for each communicative skill.	Successful completion of Level 8 with a B grade average in the Certificate of Attainment in Academic English (CAAE) programme.
Law	6.5 overall (no less than 6.0 in writing).	100 with a score of 22 in writing.	65 with no less than 58 for each communicative skill.	Successful completion of Level 8 with a B grade average in the Certificate of Attainment in Academic English (CAAE) programme.
Master of Teaching and Learning	7.5 overall (no band less than 7.0).			Successful completion of Level 8 with a B+ grade average (and no less than C in any section of the Certificate of Academic English Language (CAEL) programme). The programme has interview selection requirements.
Postgraduate research – MPhil, PhD, Professional doctorates	6.5 overall (no less than 6.0 in writing).			

Note:

- The University's English language requirements may be subject to change in subsequent years.
- Each faculty/school reserves the right to request an IELTS or TOEFL score or equivalent.
- English language waivers are considered by the relevant faculty on a case-by-case basis.
- All undergraduate students are recommended to enrol in SSART104 Undergraduate Writing for ESL Students in their first semester. Students with an IELTS of 7.0 (or equivalent) may be exempted.
- Upon completion of the Bachelor of Social Work, students must be able to demonstrate a minimum score of IELTS 6.5 in each area of competence to gain registration as a social worker.

Waikato Pathways College

English language and foundation programmes

The University offers pathway programmes for students who have not gained direct entry to our undergraduate and postgraduate degrees.

The Waikato Pathways College prides itself on providing a range of learning opportunities that are research-informed, locally and internationally connected, dynamic and distinctive. Whether you want to prepare for university study or improve your English, the College has the right programmes. The College also supports international study groups in a range of discipline areas and trains teachers who want to teach English to adults.

Programmes offered include:

- Certificate of Attainment Foundation Studies (CAFS)
- Certificate of Attainment in English language (CAEL)
- Certificate of Attainment in Academic English (CAAE)
- General English
- Group and study tours
- Teacher education
- IELTS preparation.

English language preparation programmes for entry to university

Students who have an IELTS (Academic), TOEFL or Pearsons (PTE academic) examination score will enter one of these preparation courses. Students who do not provide evidence of an external examination will sit an English language placement test during the first week to determine the level they may enter.

Level started	Entry requirements	Pathway to
Certificate of Attainment in Academic English (CAAE): Level 5	IELTS* Overall 4.5 overall, including 4.5 in the writing band and no less than 4.0 in the other bands.	Certificate of Attainment in Academic English (CAAE)/Level 6.
	TOEFL iBT* score of 32-34 overall, with no less than 12 in the writing band.	
Certificate of Attainment in Academic English (CAAE): Level 6	IELTS* Overall 5.0, including 5.0 in the writing band and no less than 4.5 in the other bands.	University of Waikato Foundation Studies programme from CAAE Level 6/with a B grade average.
	TOEFL iBT* score of 35-45 overall, with no less than 17 in the writing band.	
Certificate of Attainment in Academic English (CAAE): Level 7	IELTS* score of 5.5 overall, including 5.5 in the writing band and no less than 5.0 in the other bands.	Most University of Waikato bachelor degrees with a B grade average.
	TOEFL iBT* score of 46-59 overall, with no less than 20 in the writing band.	
Certificate of Attainment in Academic English (CAAE): Level 8	IELTS* score of 6.0 overall, including 6.0 in the writing band and no less than 5.5 in the other bands.	Most University of Waikato postgraduate degrees with a B grade average.
	TOEFL iBT* score of 60 – 78 overall, with no less than 21 in the writing band.	

**The IELTS (Academic) or TOEFL iBT results can be dated no older than 12 months before the intended start date.*

Foundation Studies

The University offers foundation studies programmes for high school students who have not met the academic requirements for entry into degree studies. This programme is offered either as a standard (30 week/two semester) programme or an accelerated (15 week/one semester) programme for better-prepared students. Foundation Studies classes are shared with

domestic students (except for English classes) which encourages international students to improve their English and make local friends. Classes are held on the same campus as all degree programmes, which helps students to become familiar with the campus and the way the University works.

Standard Foundation Studies programme

The course is made up of eight papers. Two are compulsory and students choose the other six from a range of subjects, depending on their planned degree study.

Entry requirements (academic)

- Students must have completed a high school qualification from their home country; OR
- Have completed secondary school study equivalent to New Zealand Year 12.

Entry requirements (English)

- IELTS 5.5 (with 5.0 in writing)
- IBT TOEFL overall score of 70 with a minimum writing score of 15
- Level 6 of the Certificate of Attainment in Academic English with an overall B grade average.

Compulsory papers

- English (two papers).

Electives

Business Studies, Accounting, Mathematics and Statistics, Calculus, Science, Biology, Physics, Chemistry, Comparative Cultures, Study Skills, Critical Thought and Expression, Arts, Social Sciences.

Intakes: February/July/November

If you start in July or November, you can fast-track your studies and finish in eight months by studying over summer



8-9 months (full-time)



Approximate first-year cost NZ \$20,240

Accelerated Foundation Studies programme

The course is made up of four papers. One is compulsory and students choose the other three from a range of subjects, depending on their planned degree study.

Entry requirements (academic)

- Students must have completed a high school qualification from their home country; OR
- Have completed secondary school study equivalent to New Zealand Year 13.

Entry requirements (English):

- IELTS 5.5 (5.5 in writing, no band lower than 5.); OR IBT TOEFL overall score of 70 with a minimum writing score of 17
- Certificate of Attainment in Academic English Level 6 with an overall 'B' grade and a 'B' in writing.

Compulsory papers

English.

Electives

Business Studies, Accounting, Mathematics and Statistics, Calculus, Science, Biology, Physics, Comparative Cultures, Study Skills, Critical Thought and Expression, Arts, Social Sciences.

Intakes: February/July/November



5 months (full-time)



Approximate first-year cost NZ \$10,120

Academic entry requirements for foundation studies programmes

Country	Standard Foundation programme	Accelerated Foundation studies
China	Completion of Year 11 or Year 12 Senior High School.	Senior High School Year 2 or 3 with over 80% in four subjects OR GaoKao Band 2 (high end).
Hong Kong	Successful completion of Hong Kong Diploma of Secondary Education with a Grade 2 or better in four core subjects.	Successful completion of Hong Kong Diploma of Secondary Education with three subjects at Level 3.
Indonesia	Senior Secondary School Leaving Certificate of Completion (Surat Tanda Tamat Belajar Sekolah Menengah Atas (STTB SMA)) of 6.5.	Senior Secondary School Leaving Certificate of Completion (Surat Tanda Tamat Belajar Sekolah Menengah Atas (STTB SMA)) between 6.5 and 8.5.
Kuwait	Case-by-case assessment.	GSEC higher than 70% average (academic subjects only).
Malaysia	Sijil Pelajaran Malaysia (SPM) with a B4 average in five subjects.	Sijil Pelajaran Malaysia (SPM) with an A2 average in five subjects. STPM at least one C grade.
Oman	Successful completion of the Secondary School Certificate (Thanawiya Amma) with at least an 80% average.	GSEC with 70% average.
Saudi Arabia	Successful completion of the General Secondary Education Certificate (Tawhijiyah, Tawjihi or Shahadat Al-Maharlat Al-Thanawiyyat) with a 60% overall average.	Successful completion of the General Secondary Education Certificate with 85% average (academic subjects only).
Singapore	Singapore-Cambridge General Certificate of Education (GCE) 'O' Levels with a B4 average in four main subjects.	Attempted Singapore-Cambridge A (H) levels with at least one H2 pass at C grade.
Vietnam	Upper Secondary School Graduation Certificate (Bang tot nghiep pho tong trung hoc) or Diploma of General Education (Bang tu tai) with scores of 5.0 or better on a 10 point scale.	Intermediate Diploma (post school qualification).
New Zealand High School	NCEA Level 2.	Attempted NCEA Level 3 and narrowly missed attaining University Entrance. All applications assessed on a case-by-case basis.

For other country entry requirements, contact us at international@waikato.ac.nz





Our Faculties and Programmes

Faculty of Arts and Social Sciences	36
Faculty of Computing and Mathematical Sciences	48
Te Kura Toi Tangata Faculty of Education	58
Faculty of Health, Sport and Human Performance	64
Te Piringa – Faculty of Law	68
Te Pua Wānanga ki te Ao – Faculty of Māori and Indigenous Studies	72
Faculty of Science and Engineering	76
Waikato Management School	86

Faculty of Arts and Social Sciences

waikato.ac.nz/fass

The Faculty of Arts and Social Sciences is one of the larger faculties within the University. The faculty places emphasis on offering a comprehensive range of subjects and research areas.

Our faculty is made up of three schools – the School of Arts, the School of Social Sciences and the School of Psychology. Across the Faculty we offer more than 40 subjects and an enviable range of qualifications.

We have more than 120 talented academic staff, including many with an international backgrounds and/or qualifications. Our research portfolio is recognised nationally and internationally.

Qualifications

Bachelor of Arts (BA)	38
Bachelor of Environmental Planning (BEP)	39
Bachelor of Music (BMus)	40
Bachelor of Social Sciences (BSocSc)	42
Bachelor of Social Work (BSW)	43
Postgraduate Diploma in the Practice of Psychology (PGDipPracPsych)	44
Master of Applied Psychology (MApPsy)	44
Master of Arts (MA)	45
Master of Arts Applied (MA(Applied))	45
Master of Environment and Society (MEnvSoc)	46
Master of Environmental Planning (MEP)	46
Master of Professional Writing (MPW)	46
Master of Music (MMus)	47
Master of Social Sciences (MSocSc)	47
Master of Social Work (MSW)	47

Rankings and accreditations

Subjects in the top 250 QS World University Subject Rankings 2017:

- Arts and Humanities
- English Language and Literature
- Geography
- Linguistics
- Social Sciences and Management
- Sociology.

The QS Subject Rankings assess nearly 800 universities around the world on the quality of 30 different subject areas.

National Institute of Demographic and Economic Analysis (NIDEA)

NIDEA is a research institute based in the Faculty of Arts and Social Sciences. It is New Zealand's sole national institute of demographic and population-focused research, and the only such unit to generate and co-ordinate New Zealand research in population studies. NIDEA researchers are nationally and internationally recognised.

waikato.ac.nz/nidea

Traffic and Road Safety (TARS) Research Group

TARS Research Group has established an international reputation and is an independent provider of quality research for the Foundation for Science, Transfund, Road Safety Trust, Land Transport New Zealand (LTNZ), the New Zealand Police, ACC, and local and regional road controlling authorities. This makes TARS New Zealand's leading centre for road safety research.

Research units

- Audience Research Unit
- Historical Research Unit
- Learning, Behaviour and Welfare Research Unit
- Māori and Psychology Research Unit
- Mediarena Centre Research groups
- Waikato Gender Research Network.



Bachelor of Arts (BA)

Study for a Bachelor of Arts (BA) at Waikato for a uniquely personal degree that is also the world's most widely recognised.

You will learn how humans think, feel and act, and how the past shapes our present and our future. You will answer the big questions about who we are and where we come from. The BA gives you the freedom to design an Arts degree with subjects you are passionate about.

Practical experience

Some subjects provide the opportunity to undertake work placements in second and third year, to gain practical experience by applying what you have learned.

BA majors

- Anthropology ¹
- Economics ²
- Education and Society ¹
- English ¹
- Environmental Planning ⁴
- Geography ⁴
- History ¹
- Human Development ¹
- International Languages and Cultures ¹
- Linguistics ¹
- Music ³
- Philosophy ¹
- Political Science ¹
- Population Studies ¹
- Psychology ⁴
- Screen and Media Studies ³
- Social Policy ²
- Sociology ¹
- Theatre Studies ³
- Writing Studies. ¹

Faculty of Arts and Social Sciences Minors*

- Chinese
- Creative Writing
- Dance
- Ethics
- French
- Japanese
- Labour Studies
- Public Policy
- Spanish
- Women's and Gender Studies.

*Students may include any second major or any minor offered by the University.

Intakes: February/July



3 years (full-time)



Approximate first-year tuition fee (see majors)

1. NZ \$23,260
2. NZ \$27,165
3. NZ \$28,290
4. NZ \$30,280

Entry requirements
Academic pages 24-27
English language pages 30-31

waikato.ac.nz/go/BA

Career options

- Composer
- Editor
- Events manager
- Foreign affairs analyst
- Historian
- Interpreter
- Journalist
- Museum curator
- Politician
- Screenwriter
- Television director or producer
- Writer

Bachelor of Environmental Planning (BEP)

The Bachelor of Environmental Planning (BEP) is a specialist degree that will prepare you for a career in a planning-related field.

If you are interested in understanding the environment and the way in which humans interact with it, then the BEP is the degree for you. The BEP is a four-year degree that will deepen and broaden your knowledge of the natural world and its relationships with human resource use, development and protection. You will gain the knowledge and skills necessary to be involved in planning for sustainable management of the environment. The BEP includes specialist planning papers focused on the development of professional planning skills, and because environmental problems usually include a human aspect as well as a natural element, the degree also involves papers from the subjects of Biology, Economics, Political Science, Earth and Ocean Sciences, Public Policy and Geography, plus Environmental Ethics.

Practical experience

The BEP incorporates opportunities for practical experience, and papers include labs, workshops and field trips as well as lectures. Many papers feature guest lectures from professionals from the environmental planning and resource management sectors.

Students will undertake a wide range of practical activities as part of their assessments:

- Preparation of maps
- GIS applications
- Resource consent applications
- Resource management plans
- Iwi* management plans
- Policy position papers
- Environmental monitoring plans.

Students attend resource management hearings, be involved in case law presentations and participate in mock hearings.

BEP streams

- Te Ara Taio: Māori and the Environment
- Science and the Environment
- Society and the Environment.

**Iwi is the Māori name used when referring to an extended kinship group, tribe, nation, people, nationality, race.*

Intakes: February/July



4 years (full-time)



Approximate first-year tuition fee NZ \$30,280



Accredited by the New Zealand Planning Institute (NZPI)

Entry requirements
Academic pages 24-27
English language pages 30-31

waikato.ac.nz/go/BEP

Career options

- City planner
- Community development co-ordinator
- Conservation planner
- Environmental consultant
- Environmental educator
- Environmental planner
- Iwi planning co-ordinator
- Policy analyst
- Resource consent planner

Bachelor of Music (BMus)

Waikato's music teachers are some of the best in New Zealand. Students benefit from their wealth of knowledge and experience, and have many opportunities for public performance with routine access to a world-class performing arts venue.

The BMus is a specialist degree that will help you sharpen your musical talent, with guidance from our internationally acclaimed musicians and lecturers. This degree is for those that have musical skill and ambition, or just a love of music. Students can choose between an academic, composition, or performance-based stream to learn different styles and techniques that hone their skills in the areas of music that interest them.

In the BMus performance stream, students must demonstrate skill and technical advancement in performance recital examinations. Tuition is available in voice, piano, cello, violin, classical guitar, and a broad range of orchestral instruments.

If you choose the BMus academic stream you are able to include some elective non-music papers to complement your interests and career aspirations.

Practical experience

You'll receive lessons, be able to perform, and have your own compositions performed in the Gallagher Academy of Performing Arts through events such as the annual opera production, the weekly Lunchtime Recital Series, the Lilburn Trust Student Composition Awards concert, and various other performance competitions. You'll also benefit from numerous other performance opportunities on campus and in the wider community.

You can also enrol in music papers while studying in other degrees.

BMus streams

- Academic
- Composition
- Performance.

Intakes: February/July



3 years (full-time)



Approximate first-year tuition fee NZ \$28,290

Entry requirements
Academic pages 24-27
English language pages 30-31

waikato.ac.nz/go/BMus

Career options

- **Broadcaster**
- **Composer**
- **Film music producer**
- **Performer**
- **Orchestral player**
- **Journalist**
- **Music retailer**
- **Recording artist**
- **Teacher**
- **Sound design**
- **Web-based music**



Jacky Siu (Bachelor of Music (Honours)) performing at the annual Blues Awards evening.

Bachelor of Social Sciences (BSocSc)

The Bachelor of Social Sciences (BSocSc) looks at how people and society function and change.

The degree offers contemporary and relevant areas of study such as employment relations, social policy, and environmental planning. Students examine contemporary issues from a social science to emerge with the skills, knowledge and motivation to make a difference to the world. Research is a significant requirement of the BSocSc with compulsory research papers within the degree. The research capabilities you develop through your degree will be invaluable in any career that requires information gathering, analysis of complex issues, thorough reporting and informed decision-making.

Practical experience

Some subjects provide the opportunity to gain practical experience in applying what you have learned. The Faculty of Arts & Social Sciences offers work placements at 200 and 300 levels.

Majors

- Anthropology ¹
- Economics ²
- Environmental Planning ⁴
- Geography ⁴
- History ¹
- Industrial Relations and Human Resource Management ²
- Linguistics ¹
- Philosophy ¹
- Political Science ¹
- Population Studies ¹
- Psychology ⁴
- Screen and Media Studies ³
- Social Policy ²
- Sociology. ¹

Minors

You can choose to do a minor from the list of majors or from most subjects offered by other Faculties/Schools of Studies. Other subjects that are only offered as minors are Ethics, Labour Studies, Public Policy, Women's and Gender Studies.

Intakes: February/July



3 years (full-time)



Approximate first-year tuition fee

1. NZ \$23,260
2. NZ \$27,165
3. NZ \$28,290
4. NZ \$30,280

Entry requirements
Academic pages 24-27
English language pages 30-31

waikato.ac.nz/go/BSocSc

Career options

- Community health worker
- Demographer
- Diplomat
- Economist
- Employment relations advocate
- Environmental consultant
- Ethics adviser
- Human resource manager
- Iwi or Māori resource development officer
- Policy analyst

Bachelor of Social Work (BSW)

The Bachelor of Social Work (BSW) has been recognised by the Social Workers' Registration Board and will give you the competency skills and training needed to become a successful social worker.

The University of Waikato Social Work degree is taught at the Windermere Campus in Tauranga. It is a specified programme of study which focuses on social policy and social issues, family, social work approaches and decision making, social science research, community development, social justice, children at risk and bicultural and multicultural social work practices. The BSW may be awarded with Honours.

Practical experience

Placement in a work environment is an essential component of the BSW. In the third and fourth years of study, students will develop practical experience through fieldwork placements in social service agencies.

Intakes: February/July



4 years (full-time)



Approximate first-year tuition fee NZ \$23,260



Accredited by the New Zealand Planning Institute (NZPI)

Entry requirements
Academic pages 24-27
English language pages 30-31

waikato.ac.nz/go/BSW



Master of Applied Psychology (MAppPsy)

The Master of Applied Psychology (MAppPsy) is a specialist programme where students develop a sound understanding of the underlying concepts, principles and guiding values associated with behaviour analysis, community psychology or organisational psychology.

The degree consists of 240 points specialising in Behaviour Analysis, Community Psychology or Organisational Psychology. In the first year, students take 120 points of taught papers at 500-level. On completion of their first year and after discussion with staff, students enrol in either a 120-point thesis, or a 90-point thesis and additional 30 points of taught papers.

Career options

Depending on your specialty, you may work in a range of settings including research institutions, private practice, schools, special education settings, universities, health services, business and industry, government agencies and zoos.

Intakes: February/July



2 years (full-time)



Approximate total tuition fee NZ \$65,230

Entry requirements
Academic pages 28-29
English language pages 30-31

waikato.ac.nz/go/MAppPsy

Postgraduate Diploma in the Practice of Psychology (PGDipPracPsych)

The Postgraduate Diploma in the Practice of Psychology is a one year full-time programme of study available to graduates with a MAppPsy degree who have specialised in Organisational Psychology, Applied Behaviour Analysis or Community Psychology. It is designed to meet the requirements for registration as a psychologist under the Health Practitioners Competency Assurance Act.

Career options

Depending on your specialty, you may work in a range of settings including research institutions, private practice, schools, special education settings, universities, health services, business and industry, government agencies.

Intakes: February



1 year / 120 points (full-time)



Approximate total tuition fee NZ \$32,615

Entry requirements
Academic pages 28-29
English language pages 30-31

waikato.ac.nz/go/PGDipPracPsych



Master of Arts (MA)

Enrolling in an MA provides the opportunity to engage in independent (but supervised) research in one or more Arts subjects. Graduating with an MA at an appropriate level is a gateway to a higher research degree or to a wide range of careers.

Many of the MA subjects have relationships with business and community, locally, nationally and globally. An MA from Waikato will teach you the skills to work independently and see a major project through to completion – characteristics highly sought by employers.

Majors in the MA

- Anthropology ¹
- Chinese ¹
- Education and Society ¹
- English ¹
- French ¹
- Geography ²
- History ¹
- International Relations and Security Studies ¹
- Japanese ¹
- Mathematics ¹
- Music ³
- Philosophy ¹
- Political Science ¹
- Psychology ²
- Screen and Media Studies ¹
- Theatre Studies. ¹

Career options

- Director or producer
- Media research executive
- Professional fundraiser
- Public relations consultant
- Journalist
- Historian
- Museum curator
- Community development
- Diplomatic service
- Interpreter.

Intakes: February/July



1.5 years / 180 points
(full-time)

Note: Students with a relevant background may complete in 1 year / 120 points. It may also be possible to complete 180 points in 1 calendar year.



Approximate total
tuition fee (see majors)

1.5 years / 180 points

1. NZ \$42,990
2. NZ \$48,100
3. NZ \$48,925

1 year / 120 points

1. NZ \$28,660
2. NZ \$32,065
3. NZ \$32,615

Entry requirements
Academic pages 28-29
English language pages 30-31

waikato.ac.nz/go/MA

Master of Arts (Applied) (MA(Applied))

The MA(Applied) is for those who wish to pursue a career teaching English as a second language.

To teach English at university level in Asian countries for example, a masters qualification, such as the MA(Applied), is required. The MA(Applied) is also suitable for those working in other areas of language teaching who are contemplating a career shift and wish to work abroad. By completing the Postgraduate Diploma in Second Language Teaching (PGDipSLT) or the Postgraduate Certificate in Second Language Teaching (PGCertSLT), which are the two possible pathways into the MA(Applied), students will be exposed to practicums organised by the Applied Linguistics Programme and given the opportunity to teach under supervision. The Applied Linguistics Programme also has close connections with University of Waikato Pathways College, through assistance with professional development, as well as the English programme offered through Hamilton's Wintec. Graduates of the MA(Applied) are employed in schools and universities in many countries to teach English, or at management level within a school or education environment.

Intakes: February/July



1 year / 120 points



Approximate total
tuition fee NZ \$28,660

Entry requirements
Academic pages 28-29
English language pages 30-31

waikato.ac.nz/go/MAApplied

Master of Environment and Society (MEnvSoc)

The MEnvSoc is designed for graduates with bachelor qualifications in social sciences, environmental sciences, law, economics or management.

Students build on their qualifying degrees to gain advanced knowledge and critical analysis of the many and diverse perspectives applied to understanding and addressing environmental challenges. Possible career paths include policy work (local, regional and national), as well as working with the Waitangi Tribunal and local iwi.

**Iwi is the Māori name used when referring to an extended kinship group, tribe, nation, people, nationality, race.*

Intakes: February/July



1.5 years /180 points
(full-time)

Note: Students with a relevant background may complete in 1 year / 120 points. It may also be possible to complete 180 points in 1 calendar year.



Approximate total tuition fees
1.5 years NZ \$48,100
1 year NZ \$32,065

Entry requirements
Academic pages 28-29
English language pages 30-31

waikato.ac.nz/go/MEnvSoc

Master of Environmental Planning (MEP)

The MEP will provide graduates with advanced knowledge and skill in planning theory and practice enabling them to undertake a wide range of work in professional planning consultancies and local and central government agencies.

The Environmental Planning Programme has the services of a Planning Advisory Group, which consists of experienced planning professionals. Staff members of the programme are affiliated to the New Zealand Planning Institute and other networks such as the Resource Management Law Association.

Intakes: February/July



1 year / 120 points



Approximate total
tuition fee NZ \$32,615

Entry requirements
Academic pages 28-29
English language pages 30-31

waikato.ac.nz/go/MEP

Master of Professional Writing (MPW)

The Master of Professional Writing (MPW) offers a research-led and strongly practice-based qualification in professional and creative writing.

The core paper is designed specifically to enhance the workplace readiness of graduates, and elective papers range across a variety of fields from creative writing to writing for promotional purposes and advertising, for digital media and for scholarly and professional publication. Students have the opportunity to include a writing internship and all MPW students will be offered an on-campus professional writing mentor who will provide professional advice and direct students towards on-campus writing opportunities.

Intakes: February/July



1.5 years / 180 points
(full-time)

Note: Students with a relevant background may complete in 1 year / 120 points. It may also be possible to complete 180 points in 1 calendar year.



Approximate total tuition fees
1.5 years / 180 points
NZ \$42,990
1 year / 120 points
NZ \$28,660

Entry requirements
Academic pages 28-29
English language pages 30-31

waikato.ac.nz/go/MPW

Master of Music (MMus)

The MMus provides research-led, practice-driven supervision of music composition and performance in preparation for a career as a professional musician.

The papers offered towards the MMus have been designed to achieve mastery of content, acquisition of skills and development of attributes. Students have opportunities to participate in their respective musical fields in ways that contribute to their emerging professionalism and also offer significant networking links both nationally and internationally.

Intakes: February/July



1 year / 120 points
(full-time)



Approximate total
tuition fee NZ \$32,065

Entry requirements
See pages 28-29 and 30-31

waikato.ac.nz/go/MMus

Master of Social Sciences (MSocSc)

This is an advanced programme of study in a social science discipline that introduces students to the frontiers of knowledge and research techniques in their chosen fields.

It builds on their bachelors or honours qualifications and it includes a substantial component of independent investigation and the preparation of a dissertation or thesis.

Majors

- Anthropology ¹
- Demography ¹
- Economics ³
- Education and Society ¹
- Geography ²
- Health Development and Policy ¹
- History ¹
- Human Development ¹
- Labour Studies ¹
- Māori Cultural Studies / Tikanga Māori ¹
- Philosophy ¹
- Political Science ¹
- Population Studies and Demography ¹
- Psychology ²
- Public Policy ¹
- Social Policy ¹
- Sociology ¹
- Women's and Gender Studies.¹

Intakes: February/July



1.5 years / 180 points
(full-time)

Note: Students with a relevant background may complete in 1 year / 120 points. It may also be possible to complete 180 points in 1 calendar year.



Approximate total
tuition fee (see majors)

1.5 years / 180 points

1. NZ \$42,990
2. NZ \$48,923
3. NZ \$41,955

1 year / 120 points

1. NZ \$28,660
2. NZ \$32,615
3. NZ \$27,970

Entry requirements
Academic pages 28-29
English language pages 30-31

waikato.ac.nz/go/MSocSc

Master of Social Work (MSW)*

The MSW is an interdisciplinary degree designed for graduates of undergraduate degrees in social work and for those who are already practitioners in social work and social services professions.

It provides you with a combination of practical research skills, advanced theoretical knowledge, and an understanding of specific fields of social work practice and decision making.

** The availability of this degree is subject to the approval of the Faculty of Arts and Social Sciences.*

Intakes: February/July



1.5 years / 180 points
(full-time)

Note: Students with a relevant background may complete in 1 year / 120 points. It may also be possible to complete 180 points in 1 calendar year.



Approximate total tuition fee
1.5 years / 180 points

NZ \$42,990

1 year / 120 points

NZ \$28,660

Entry requirements
Academic pages 28-29
English language pages 30-31

waikato.ac.nz/go/MSW

Faculty of Computing and Mathematical Sciences

cms.waikato.ac.nz

The Faculty of Computing and Mathematical Sciences is recognised as one of New Zealand's leaders in this field. The faculty has a strong international reputation for its research and teaching excellence. Staff are actively involved in a wide range of exciting and innovative research that transcends the boundary between theory and practice.

Qualifications

Bachelor of Computing and Mathematical Sciences with Honours (BCMS(Hons))	50
Bachelor of Design (BDes)	52
Bachelor of Engineering with Honours (BE(Hons))	78
Bachelor of Science (BSc)	53
Bachelor of Science with Honours (BSc(Hons))	53
Bachelor of Science (Technology) (BSc(Tech))	81
Master of Computer Graphic Design (MCGD)	54
Master of Cyber Security (MCS)	54
Postgraduate Certificate in Information Technology (PGCertInfoTech)	56
Master of Information Technology (MInfoTech)	56
Master of Security and Crime Science (MSCS)	57
Master of Science (Research) (MSc(Research))	85
Master of Science (MSc)	85

Rankings and accreditations

Subjects in the top 250 QS World University Subject Rankings 2017:

- Computer Science and Information Systems
- Art and Design.

Research Groups

- Cyber Security Group
- Digital Library Group
- Energy Informatics Group
- Formal Methods Group
- Human-Computer Interaction Group
- Information Systems and Databases Group
- Machine Learning Group
- WAND Computer Networks Group
- Computer Graphic Design Research Group.

Machine Learning Group

Machine learning is concerned with the task of automatically extracting useful information from data. The faculty is well-known for a software “workbench” called the Waikato Environment for Knowledge Analysis (WEKA), which is widely used for research, teaching, and commercial applications of machine learning. For more information visit cs.waikato.ac.nz/ml

Institute for Security & Crime Science

Security and Crime Science is an emerging field of study that aims to develop a scientific approach to crime prevention and utilisation of police resources. The Institute incorporates four interlinked components; theories in crime science, modelling and analysis of data on crime and security issues, the use of computer science to assist evidence-based police work, and research in psychology relevant to criminal behaviour and police processes. The Institute works in conjunction with the Wellington-based Centre for Evidence Based Policing, a joint University of Waikato and New Zealand Police initiative.



Bachelor of Computing and Mathematical Sciences with Honours (BCMS(Hons))

The Bachelor of Computing and Mathematical Sciences with Honours (BCMS(Hons)) degree gives students the opportunity to immerse themselves in the subject they love, taught by the country's leading computer science and mathematics researchers.

The BCMS(Hons) will equip students with the technical, business and practical skills for a career in a field of unlimited international opportunities. The BCMS(Hons) is New Zealand's only computing and mathematical science degree taught over four years. That extra year gives students the chance to drill more deeply into their specialist areas and add papers that will complement their main focus. Research and consulting work keeps our staff close to local and international industry developments so papers are regularly updated to reflect this changing environment and match our programmes to Faculty expertise.

Practical experience

If students are excelling in their studies, there may be opportunities to gain practical experience and industry connections through a summer project working in the research labs.

Focus areas within computer science

Artificial Intelligence, Data Mining, Games and Multimedia, Information Systems, Interaction Design, Internet Applications, Networks or Software Development.

Double major

Flexible double major programmes in Computer Science and Mathematics are available.

Computing facilities at Waikato

The computing facilities at the University of Waikato are among the best in New Zealand, ranging from phones and tablets for mobile application development to cluster computers for massively parallel processing. Students have 24-hour access to computer labs equipped with all the latest computer software, and several labs are fully equipped with Mac computers, commonly used in professional design environments.

Intakes: February/July



4 years (full-time)



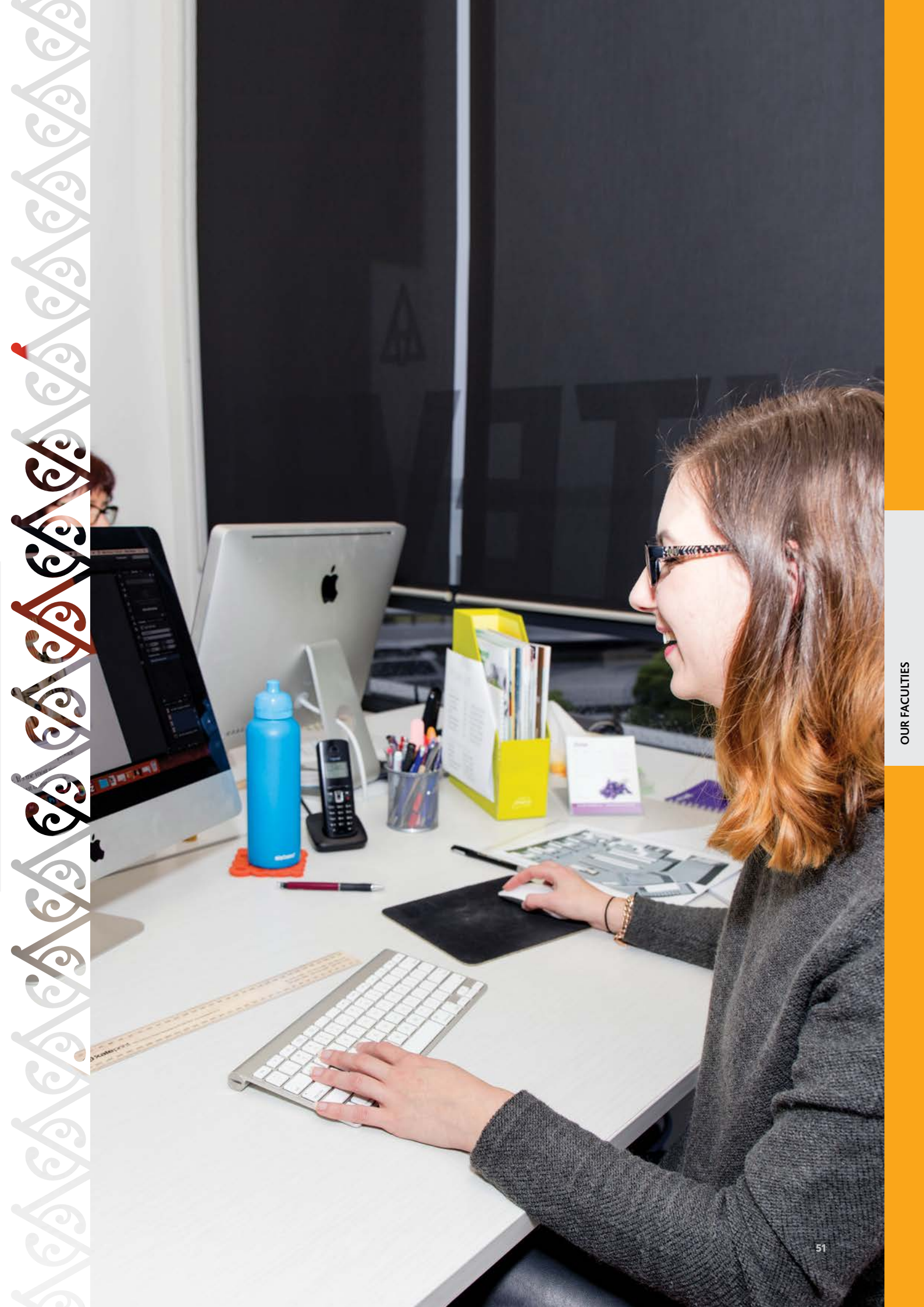
Approximate first-year tuition fee NZ \$28,290

Entry requirements
Academic pages 24-27
English language pages 30-31

waikato.ac.nz/go/BCMS

Career options

- Business analyst
- Mathematical modeller
- Programmer
- Software engineer
- Systems designer
- Web architect



Bachelor of Design (BDes)

The Bachelor of Design (BDes) combines highly creative design and visual communication papers with computer programming papers from Waikato's leading Computer Science Department.

This style of qualification meets the increasing demand for high-quality designers who are experts in graphic design that crosses many media. The programme has been developed in collaboration with the design industry.

In the first year, students will develop a foundation in the core elements and principles of design, in two and three dimensions. They will also learn essential techniques to broaden visual and verbal skills. The second year offers motion graphics and the chance to explore the relationship between visual communication and screen-based technologies. In third year, students will be ready to push the boundaries of visual communication, taking on the more professional challenges of internship and complex projects that cross many media.

Practical experience

In addition to the practical experience gained throughout the programme, you have the opportunity to undertake a real design project in the third-year paper DSIGN350. In this project you work independently and collaborate with their peers and members of the professional design industry. In addition, the final semester third-year paper DSIGN360 involves a self-directed brief which culminates each year in a Degree Show.

Facilities

BDes students have 24-hour access to computer labs, including dedicated Apple Mac-based design labs, running industry-standard design software. Students will also have access to other computer labs within the faculty.

Majors

- Communication Design
- Interface Design
- Media Design.

Intakes: February/July



3 years (full-time)



Approximate first-year tuition fee NZ \$28,290

Entry requirements
Academic pages 24-27
English language pages 30-31

waikato.ac.nz/go/BDes

Career options

- 3D modeller
- Advertising designer
- Animator
- Computer games designer
- Computer illustrator
- Interactive designer
- Motion graphics designer
- TV graphics designer
- Visual effects artist
- Web designer

Bachelor of Science (BSc)

A Bachelor of Science (BSc) with the Faculty of Computing and Mathematical Sciences provides the skills needed to be successful in a world where technology is rapidly changing people's daily lives.

The BSc lets students explore a range of scientific disciplines while developing strong problem-solving and critical thinking skills, skills that make graduates invaluable in a world with more data and new technology than ever before.

Laying a good foundation of scientific knowledge is a key feature of the first year of the BSc. Even if students haven't studied science before, introductory papers give a taste of our broad range of subjects, from which students can then develop expertise in either Applied Computing, Computer Science, Data Analytics or Mathematics.

Applied Computing will appeal to students who want to gain sound technical knowledge of information systems and internet technologies. Computer Science will teach how software systems, computers and people interact. Data Analytics provides the tools and skills to make sense of large and complex data sets. Mathematics provides students with analytical and problem solving skills as well as a high level of numeracy skills, which are critical for a broad range of careers.

BSc majors

- Applied Computing
- Computer Science
- Data Analytics
- Mathematics.

Students can choose to take a second major from the lists above or alternatively, a second major can be chosen from almost any other undergraduate subject.

Minors

You can either select a minor from the science subjects listed below, or undertake a minor in any other subject within the University.

- Animal Behaviour
- Applied Physics
- Biochemistry
- Chemistry
- Coastal Processes
- Computer Science
- Ecology and Biodiversity
- Environmental Sciences
- Geology
- Hydrology
- Materials Science
- Mathematics
- Molecular and Cellular Biology
- Soil Science
- Statistics.

Bachelor of Science with Honours (BSc(Hons))

This is a 1 year qualification after the 3-year BSc.

Intakes: February/July



3 years (full-time)



Approximate first-year tuition fee NZ \$30,280

Entry requirements
Academic pages 24-27
English language pages 30-31

waikato.ac.nz/go/BSc

Career options

- Web application developer
- Systems analyst
- Software developer
- Mobile app master
- Biometrician
- Industrial statistician
- Meteorologist
- Mathematical modeller

Master of Computer Graphic Design (MCGD)

The Master of Computer Graphic Design (MCGD) is an advanced, creative degree that emphasises graphic design theory, technology and research tailored to suit your interests.

The MCGD is an opportunity to carry out a large-scale design thesis and exhibited design realisation. This is based on original research and collaboration with members of the professional design industry and academic communities, in order to pave the pathway to a chosen career. During the thesis, MCGD students have the full support, guidance and expertise of a dedicated supervisor. A professional oriented programme option with more taught papers is available.

Intakes: February/July



1.5 years / 180 points
(full-time)

Note: Students with a relevant background may complete in 1 year / 120 points. It may also be possible to complete 180 points in 1 calendar year.



Approximate total tuition fees
1.5 years / 180 points
NZ \$48,100
1 year / 120 points
NZ \$32,065

Entry requirements
Academic pages 28-29
English language pages 30-31

waikato.ac.nz/go/MCGD

Master of Cyber Security (MCS)

The Master of Cyber Security (MCS) is the first of its kind to be offered in New Zealand. Studying for the MCS allows students to develop the skills needed to become a specialist in this area. There's an increasing international demand for trained cyber security professionals, as a result of global ransomware attacks becoming increasingly more common.

Students will gain an advanced understanding and knowledge of cyber security from the point of view of preventative security, detection of security breaches, and offensive security (such as computer system penetration testing). In addition, students will gain skills in the areas of cloud computing technologies, computer infrastructure, legal aspects of cyber security, and a capacity to think innovatively and be able to use research-led knowledge to advance professional practice.

Studying cyber security at Waikato gives students the opportunity to work with and learn from award-winning cyber security experts such as Associate Professor Ryan Ko. Our academics also have strong international connections with industry and government, such as the National Cyber Policy Office and INTERPOL.

Intakes: February/July



1.5 years / 180 points
(full-time)

Note: Students with a relevant background may complete in 1 year / 120 points. It may also be possible to complete 180 points in 1 calendar year.



Approximate total tuition fees
1.5 years / 180 points
NZ \$48,100
1 year / 120 points
NZ \$32,065

Entry requirements
Academic pages 28-29
English language pages 30-31

waikato.ac.nz/go/MCS



“ Jeff was the first student to graduate with a Master of Cyber Security from the University of Waikato. A former network analyst in Vanuatu, Jeff witnessed many cyber-attacks but had minimal knowledge of how to fix them. That led him to pursue further studies within cyber security. “We can have the strongest system but it all comes down to the users. The users are the weakest link,” he says.

“If you want to study cyber security there is no better place than Waikato, with its Cyber Security Lab and industry connectedness spanning the Pacific and wider world.” Jeff is now working towards his PhD, aimed at increasing security visualizations for mobile platforms. ”

Jeff Garae, Vanuatu
Master of Cyber Security

Master of Information Technology (MInfoTech)

The Master of Information Technology (MInfoTech) is a new degree (jointly awarded with the University of Auckland) which is designed to help students become "industry ready".

Setting the MInfoTech apart from more theoretical qualifications is the high degree of business enterprise and project-based learning it demands. One whole semester will be devoted to an internship with an industry partner, working under supervision on a real-world project.

The selection of taught papers is updated every year. Students with an undergraduate degree in computer science (or equivalent) can apply for the 1.5 year (180 points) programme.

The combination of papers offered focuses on improving ICT skills as well as communication and critical thinking skills. Students who have gained the equivalent to an honours degree in computer science can apply for the 1 year (120 points) MInfoTech.

Intakes: February/July



1.5 years / 180 points
(full-time)

Note: Students with a relevant background may complete in 1 year / 120 points. It may also be possible to complete 180 points in 1 calendar year.



Approximate total tuition fees
1.5 years / 180 points
NZ \$48,100
1 year / 120 points
NZ \$32,065

Entry requirements
Academic pages 28-29
English language pages 30-31

waikato.ac.nz/go/MInfoTech

Postgraduate Certificate in Information Technology (PGCertInfoTech)

Designed for students who have completed a non ICT-related bachelors degree, the PGCertInfoTech will teach students the specialist skills needed to ignite a career in ICT.

Throughout this short 12-week, intensive programme students gain fundamental skills in software development, including up-to-date knowledge of object-oriented programming and design, web technologies and databases, which will complement existing critical thinking and communication abilities.

Intakes: February/November



12 weeks / 60 points
(full-time)



Approximate total tuition fee NZ \$16,030

Entry requirements
Academic pages 28-29
English language pages 30-31

waikato.ac.nz/go/PGDipInfoTech

Master of Security and Crime Science (MSCS)

The Master of Security and Crime Science (MSCS) provides specialised professional postgraduate-level study in security and crime science.

With the MSCS, students will develop the skills and core competencies required to become leaders in the security, intelligence and crime-prevention areas in the public and private sectors. This programme will produce graduates who will be able to use evidence-based information together with scientific approaches and analytical and creative methods to reduce crime and improve security in an ever-changing society.

The MSCS is accessible to students from a range of backgrounds, aimed at actual and potential practitioners in law enforcement and security.

The MSCS is the first of its kind in New Zealand and the Asia-Pacific region, led by the New Zealand Institute for Security and Crime Science (NZISCS). The Institute leverages on the University's partnership with the New Zealand Police and several domestic and international agencies including INTERPOL.

Research promotes community safety through multi-disciplinary and evidence-based research into security and crime patterns. Students will work with world-leading researchers in psychology, statistics, artificial intelligence including machine learning, cyber security, political science, economics, management, law, education, Māori and indigenous development, and demographic research.

Intakes: February/July



1.5 years / 180 points
(full-time)

Note: Students with a relevant background may complete in 1 year / 120 points. It may also be possible to complete 180 points in 1 calendar year.



Approximate total tuition fees
1.5 years / 180 points
NZ \$48,100

1 year / 120 points
NZ \$32,065

Entry requirements
Academic pages 28-29
English language pages 30-31

waikato.ac.nz/go/MSCS



Te Kura Toi Tangata Faculty of Education

education.waikato.ac.nz

Te Kura Toi Tangata Faculty of Education is New Zealand's premier research-led education institution, committed to enhancing education through the three interconnected disciplines of teaching, research and professional learning.

We push boundaries and continue to strengthen our teaching and research partnerships with schools and stakeholders to produce quality graduates in

areas such as teaching, education and society, Māori education, leadership, human development and counsellor education.

Qualifications

Bachelor of Teaching (BTchg)	60
Graduate Diploma of Teaching (Early Childhood Teaching) (GradDipT)	60
Bachelor of Social Sciences (BSocSc)	61
Master of Counselling (MCouns)	61
Master of Disability and Inclusion Studies (MDInS)	61
Master of Education (MEd)	62
Master of Educational Leadership (MEdLeadership)	63
Master of Teaching and Learning (MTchgLn)	63

The faculty prides itself on a number of innovative firsts. It was the first to offer early childhood qualifications and teacher education online programmes. Te Kura Toi Tangata Faculty of Education is determined to be part of cutting-edge educational developments through the three interconnected disciplines of teaching, research and professional learning.

Rankings and accreditations

Education is ranked in the top 51 – 100 by QS World University Subject Rankings 2017. The QS Subject Rankings assess nearly 800 universities around the world on the quality of 30 different subject areas.

Research institutes

Institute of Professional Learning (IPL)

IPL is a bilingual, bicultural professional learning and development organisation that provides research-

informed programmes of professional learning and development. The work IPL undertakes contributes to improved professional practice in early childhood centres, schools and tertiary institutions, nationally and internationally.

Wilf Malcolm Institute of Educational Research (WMIER)

WMIER undertakes research that makes a difference to policy and practice in early childhood, primary and secondary schools and tertiary education.

Centres

- Centre for Global Studies in Education
- Early Years Research Centre
- Technology, Environmental, Mathematics and Science Education Research Centre
- The Centre for Educational Leadership Research.



Bachelor of Teaching (BTchg)

As a teacher, students will be joining a profession where they can make a difference to the lives of children and young people. Teaching is an exciting, challenging, inspiring and rewarding career.

When studying teaching, students are learning how to facilitate, lead, organise, plan, analyse and manage. More importantly, they are learning how to instil a love of learning in their students.

Practical experience

Learning will be through practicum in schools. During practicum, students will be working full-time in a classroom or early childhood service under the guidance of teachers. Students will develop valuable teaching strategies and add practical experience to their theoretical learning.

Bachelor of Teaching degree pathways

Early Childhood

Primary

Bachelor of Teaching (BTchg) conjoint degree programmes

Primary, Intermediate and Secondary

In the four-year conjoint degree programme, students complete two degrees – a BTchg majoring in Professional Education and a subject degree from one of the University's other faculties. The two degrees are interwoven to learn both about the subject areas and how to teach them. Subject degree options include Bachelor of Arts, Bachelor of Science, Bachelor of Health, Sport and Human Performance, and Bachelor of Social Sciences.

Intakes: February/July



3 years (full-time)



Approximate first-year tuition fee NZ \$27,535

Entry requirements
Academic pages 24-27
English language pages 30-31

waikato.ac.nz/go/BTchg

Career options

Teaching is a rewarding and fulfilling career. This broad qualification can lead to other areas of employment such as working for government departments, community education groups or tertiary institutions.

Graduate Diploma of Teaching (Early Childhood Education) (GradDipT)

Prepare for a career working in a variety of early childhood settings with children from birth up to six years old.

This programme consists of 12 compulsory Professional Education and curriculum teaching papers (153 points at 700 level), and three practica. You'll gain practical and theoretical knowledge about how children learn and develop, and an understanding of Te Whariki, the Early Childhood Curriculum. During the year, there will be three practica, with 14 weeks spent full-time at a school under the supervision of an associate teacher. This paper is delivered online and on campus in a classroom. The Graduate Diploma of Teaching (Primary) and Graduate Diploma of Teaching (Secondary) are also available options.

Intakes: January



1 year / 150 points (full-time)



Approximate total tuition fee NZ \$35,100

Entry requirements
Academic pages 24-27
English language pages 30-31

waikato.ac.nz/go/GradDipT

Bachelor of Social Sciences (BSocSc)

With a Bachelor of Social Sciences from Te Kura Toi Tangata Faculty of Education students will gain the skills needed to understand and interpret educational trends in New Zealand and around the world.

Everyone has a stake in the future of education. It's a field of knowledge that can be applied within and beyond the classroom, which is why Waikato provides students with invaluable skills that are transferable across many areas.

Majors

- Digital Learning
- Education and Society
- Human Development.

Career options

- Community health worker
- Educational software developer
- Industry trainer
- Policy adviser.

Intakes: February/July



3 years (full-time)



Approximate first-year tuition fee NZ \$23,260

Entry requirements
Academic pages 24-27
English language pages 30-31

waikato.ac.nz/go/BSocSc

Master of Counselling (MCouns)

The MCouns is designed to offer students opportunities to develop advanced professional counselling skills, well-grounded in social constructionist theories.

Students learn professional attitudes, knowledge and competencies in narrative approaches to counselling. The programme can be completed by coursework alone or a combination of coursework and research. Professional practicum experience occurs within community, education or health settings over the two-year programme. Graduates go on to leadership positions in counselling and counsellor education.

The programme has the following approvals:

- New Zealand Association of Counsellors – for membership purposes
- Ministry of Education – for professional education of school counsellors.

Intakes: February/July
Applications should be received by 31 October.



2 years (full-time)



Approximate total tuition fee NZ \$57,320

Admission includes a selection process. Applicants must have 2-3 years of prior experience in counselling in an appropriate setting

waikato.ac.nz/go/MCouns

Master of Disability and Inclusion Studies (MDInS)

The Master of Disability and Inclusion Studies explores key theoretical, social and educational issues involved in how to successfully support people with disabilities.

In this programme students are given the opportunity to blend theory and practice through completion of a guided in-depth research study in an area of disability/inclusion of their choice. Students will be expected to work semi-independently and gain a significant level of expertise in their chosen subject area.

Careers

- Policy adviser
- Policy analyst
- Disability Support Services – co-ordinator and leadership
- Community development leader
- Disability support advocate.

Intakes: February/July



1.5 years / 180 points (full-time)

Note: Students with a relevant background may complete in 1 year / 120 points. It may also be possible to complete 180 points in 1 calendar year.



Approximate total tuition fees
1.5 years / 180 points
NZ \$42,990
1 year / 120 points
NZ \$28,660

Entry requirements
Academic pages 28-29
English language pages 30-31

waikato.ac.nz/go/MDInS

Master of Education (MEd)

This programme is suitable for qualified teachers and other education professionals who wish to further their careers and develop leadership in a particular field of education.

Students may specialise in Global Studies in Education, Professional Learning or STEM Education. Or, they may combine taught and research papers in a specialist area such as Curriculum, Pedagogy, Early Years Education, Māori Education, Maths Education, Arts Education or Language and Literacy Education.

MEd specialisations

- Global Studies in Education
- Professional Learning
- STEM Education (Science, Technology, Engineering, Mathematics).

Intakes: February/July



1.5 years / 180 points
(full-time)

Note: Students with a relevant background may complete in 1 year / 120 points. It may also be possible to complete 180 points in 1 calendar year.



Approximate total tuition fees
1.5 years / 180 points
NZ \$42,990

1 year / 120 points
NZ \$28,660

Entry requirements
Academic pages 28-29
English language pages 30-31

waikato.ac.nz/go/MEd



“The University's MEd programme gave me great flexibility in choosing the papers I wanted to study,” says Anuja. Before arriving at Waikato Anuja was nervous about fitting in with other students. Her fears soon subsided as her lecturers encouraged interaction between classmates. “It was easy to get along with everyone, thanks to my lecturers who encouraged group discussions and activities in a lot of our lectures.”

Anuja also appreciated the teaching style in her classes, where she was encouraged to bring her own experiences and given the freedom to express her thoughts and opinions during lectures as well as in assignments. She felt this helped her engage with her own learning and helped her make clearer connections between what she was learning in class and her life experiences.

”

– Anuja Khamkar, India
Master of Education

Master of Educational Leadership (MEdLeadership)

The MEdLeadership is for aspiring or current educational leaders who want to broaden their understanding of leadership.

Significant emphasis is placed on promoting and engendering learning and skills of inquiry that provoke individual and collective work for the common good. There is both an international and national focus on areas that contribute to this programme, including developing communities of learners who explore leading for social justice, organisational change and development, personal and community leadership growth, and coaching and mentoring. There are opportunities for students to focus their research and inquiries on specific areas and in their chosen context of interest, attending to current educational issues.

Intakes: February/July



1.5 years / 180 points
(full-time)

Note: Students with a relevant background may complete in 1 year / 120 points. It may also be possible to complete 180 points in 1 calendar year.



Approximate total tuition fees
1.5 years / 180 points
NZ \$42,990
1 year / 120 points
NZ \$28,660

Entry requirements
Academic pages 28-29
English language pages 30-31

waikato.ac.nz/go/MEdLeadership

Master of Teaching and Learning (MTchgLn)

The MTchgLn programme is a selective, intensive and innovative programme for those who already have a degree but do not yet have a teaching qualification.

This programme is available for high achievers who want to make a real difference for all learners in primary, secondary and Māori-medium classrooms, and the qualification can be completed in one year. Students gain theoretical knowledge of teaching and learning, skills to carry out evidence-based teaching, and learn the teaching-as-inquiry process to monitor student learning. Students spend a large proportion of their time (up to 40 weeks) in local partner schools, enabling theory to be put into practice.

Intakes: February/July



1.5 years / 180 points
(full-time)

Note: The programme can be completed intensively in one year, however the number of points and fee remains the same.



Approximate total tuition fee NZ \$42,990

Entry requirements
Academic pages 28-29
English language pages 30-31

waikato.ac.nz/go/MTchgLn

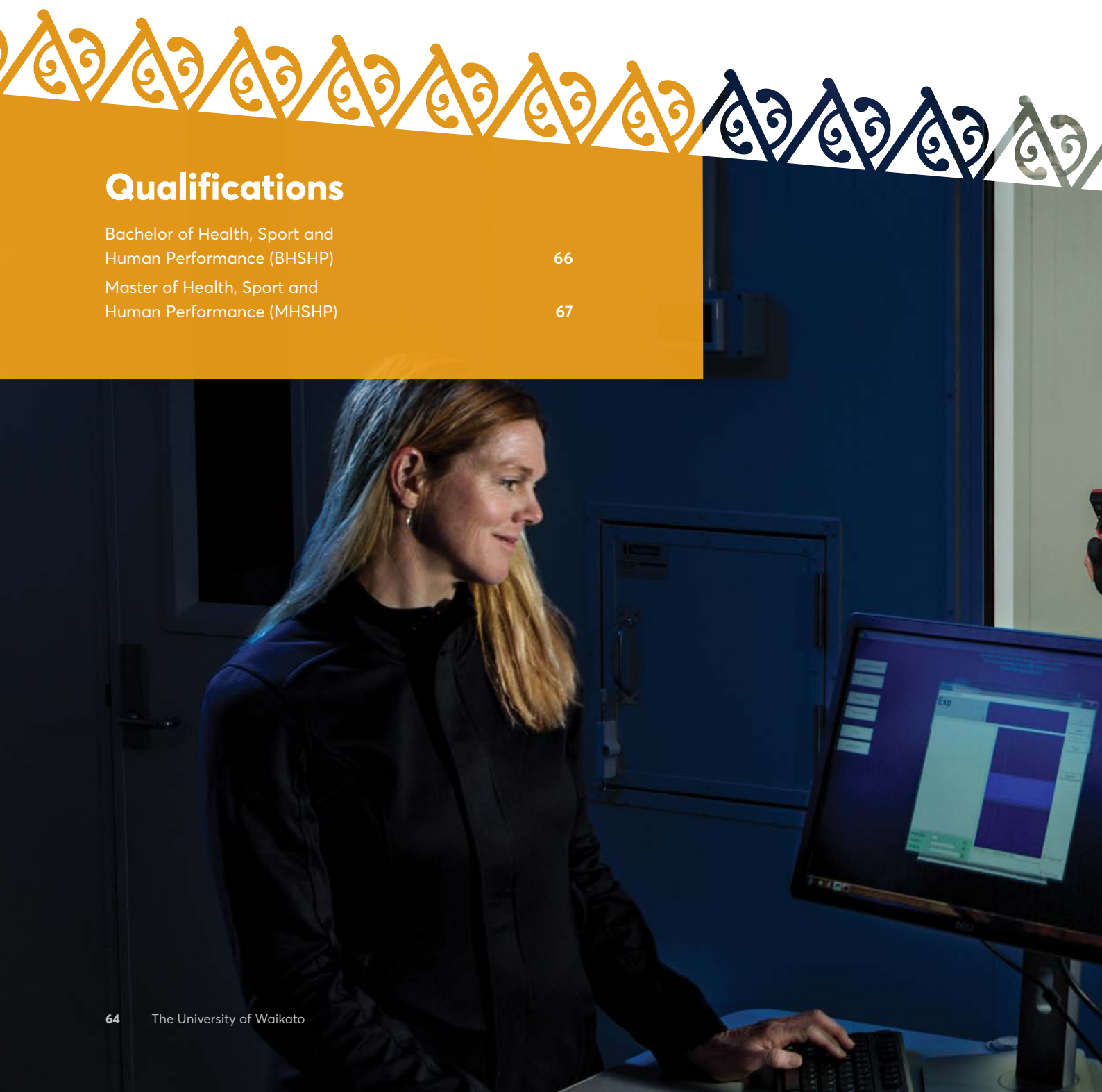
Faculty of Health, Sport and Human Performance

waikato.ac.nz/hshp

The University of Waikato is proud to foster collaborative relationships with some of the country's top sports organisations and facilities to stay at the forefront of this dynamic industry.

Qualifications

Bachelor of Health, Sport and Human Performance (BHSHP)	66
Master of Health, Sport and Human Performance (MHSHP)	67



The University's strong partnerships with community, regional and national high-performance sport organisations allow students to get a real taste for a career in this fast-paced industry.

Facilities in Hamilton and Tauranga boast the latest equipment in sport science specialisations and are equipped with cutting-edge facilities to test athlete performance, exercise and recovery, including an environmental chamber for altitude training.

The University of Waikato Adams Centre for High Performance

The University of Waikato Adams Centre for High Performance is a cutting-edge, world-class facility for the nation's best athletes. The facility contains all the essential elements required to service elite athletes and prepare them for competition on the world stage.

It is equipped with the very latest in sports science and research capability. A full suite of sports treatment services is also provided within the centre, including physiotherapy, massage and podiatry.

The University of Waikato Sports Laboratory at the Cambridge Avantidrome

The Avantidrome is a world-class facility and is based at the purpose-built 250m wooden cycling velodrome, and is host to a range of other high performance sport and community facilities.

The University of Waikato is the tertiary education partner of the Avantidrome, with a dedicated sport science laboratory, He Puna Oranga Tinana. The University of Waikato Sports Science laboratory provides specialist measurement services to endurance distance athletes as well as field testing for team sports.



Bachelor of Health, Sport and Human Performance (BHSHP)

Sport, health and fitness are some of New Zealand's fastest growing industries, which means Waikato's Bachelor of Health, Sport and Human Performance (BHSHP) graduates are in high demand for their expert knowledge and strong leadership skills.

Sport, active recreation and health all require skilled and knowledgeable leadership. The BHSHP gives students the tools and skills to excel in this dynamic environment. People who work in this industry are committed to improving the physical, social and mental well-being of others. Whether a student's interest lies in sport, education, health, active recreation, fitness or leisure, the BHSHP can be tailored to suit individual strengths, interests and career paths. The first year of the BHSHP is designed to give students a taste of a broad range of subjects.

From second year onwards, students can specialise in a particular field to further develop expertise in areas such as community health, human performance science, and sport and development coaching. Waikato researchers have strong links with the industry and other researchers nationally and internationally. They work closely with three top sporting organisations – Cycling New Zealand, the Chiefs rugby team and the Kia Magic netball team – and have strong connections with many others.

Majors

- Community health
- Human performance science
- Sport development and coaching.

Intakes: February/July



3 years (full-time)



Approximate first-year tuition fee NZ \$23,260

Entry requirements
Academic pages 24-27
English language pages 30-31

waikato.ac.nz/go/BHSHP

Career options

- Applied sport scientist
- Community sports adviser
- Event manager
- Game analyst
- Health promoter
- Personal trainer
- Sports coach

Master of Health, Sport and Human Performance (MHSHP)

The Master of Health, Sport and Human Performance (MHSHP) is for graduates interested in completing a research-based qualification in this area.

Health, sport and human performance at masters level provides opportunities to get involved in real-world research to make a difference in people's lives, as well as connect with elite athletes and teams. Whether students are interested in critically examining the way political, cultural, social and economic factors influence the meaning and nature of sport and leisure, assisting athletes and/or community members perform better, or making a specific contribution to well-being of your community, then this is the ideal postgraduate qualification.

The MHSHP is a flexible degree, giving students the option to tailor the programme to meet their needs. Staff hold the expertise to supervise a diverse range of projects. Students may opt to either study full-time to complete their MHSHP in approximately 18 months or may opt to study part-time over three years by doing two 500-level papers a year.

Students will work in the high-tech laboratory at the University of Waikato Adams Centre for High Performance, established in partnership with the Tauranga City Council. It features a state-of-the-art chamber that allows for manipulation of heat, humidity and altitude for research, teaching and athlete acclimatisation.

Intakes: February/July



1.5 years / 180 points
(full-time)

Note: Students with a relevant background may complete in 1 year / 120 points. It may also be possible to complete 180 points in 1 calendar year.



Approximate total tuition fees

1.5 years / 180 points
NZ \$42,990

1 year / 120 points
NZ \$28,660

Entry requirements
Academic pages 28-29
English language pages 30-31

waikato.ac.nz/go/MHSHP



Te Piringa – Faculty of Law

waikato.ac.nz/law

Law at the University of Waikato is a rich, challenging subject with a strong emphasis on the development of research skills.

Te Piringa – Faculty of Law was built upon three core principles; professionalism, biculturalism and the study of law in context. These principles guide teaching and research, resulting in Te Piringa being ranked in the top 200 law schools in the world. Classes in

Te Piringa – Faculty of Law are small and are typically offered in seminar-style discussions. This approach to teaching at an advanced level creates opportunities for students to discuss issues and share perspectives. It helps students to improve their communication

Qualifications

Bachelor of Laws (LLB)	70
Postgraduate Diploma in Law (PGDip (Law))	71
Master of Laws (LLM)	71
Master of Laws in Māori/Pacific and Indigenous Peoples' Law	71

skills and creates opportunities to network with others and renew motivation and confidence. Students also receive one-on-one time with the lecturing or supervising academic staff.

Whether their interest lies in Cyber Law, Laws of War and Conflicts, Transnational Criminal Law, Indigenous Issues or Environmental Law, students will benefit from learning from nationally and internationally recognised academic staff.

Waikato offers the largest selection of papers in cyber law in New Zealand, enabling students to complete a masters programme focusing on this area. The challenging and enriching learning experience at graduate level is recognised and appreciated by students.

Te Piringa – Faculty of Law runs the biggest doctoral law programme of any law school in New Zealand.

Rankings and accreditation

Law is ranked in the top 250 by QS World University Subject Rankings 2017. The QS Subject Rankings assess nearly 800 universities around the world on the quality of 30 different subject areas.

Centre for Environmental, Resources, and Energy Law (CEREL)

CEREL is dedicated to studying environmental and energy law, sustainable development issues and national resource management.

Centre for Māori and Indigenous Governance (MIGC)

MIGC seeks to improve Māori governance generally, whether it concerns Māori trusts and corporations, asset-holding companies, iwi organisations, post-settlement governance entities, marae and hapū committees, and indigenous peoples' organisations globally.



Bachelor of Laws (LLB)

The challenges facing our world require a deeper understanding of social order. Law underpins this. It prepares graduates to rise to the world's challenges today and those that we're likely to face in the future.

At Waikato we not only teach the law but encourage students to look deeper to find out why laws are made, who made them, how they work and how to change them. Students study all the compulsory core papers required by the New Zealand Council of Legal Education, the statutory body that oversees legal education in New Zealand and moderates the quality of those papers.

Waikato focuses on professionalism and the development of students' practical skills in mooting, negotiation, client interviewing and alternative dispute resolution. The faculty involves lawyers and judges in student assessments. This gives students the opportunity to develop professional relationships.

In addition to a range of papers on offer, students may elect to study a Directed Study or Law Work Placement papers. The Directed Study paper allows students to engage in research on the topic of their choice, supervised by one or more academic staff members. The Law Work Placement paper allows students to gain practical experience with a law firm, regional or central government, councils or other institutions including Police Prosecution Service and Public Defence Services.

Practical experience

Te Piringa - Faculty of Law is actively involved in the New Zealand national summer clerking programme, where students can gain work experience in law firms, government departments and other organisations. Students also have the opportunity to gain practical experience as voluntary case workers at the Hamilton District Community Law Centre. Following training and under the supervision of qualified staff, students will interview clients and undertake legal research to assist clients to resolve real-life problems.

Third- and fourth-year students, who have completed the third-year Crimes paper, are eligible to undertake an internship programme with the Diplomatic Protection Service, where they'll spend six weeks working on a number of cases.

Intakes: February/July



4 years (full-time)



Approximate first-year tuition fee NZ \$27,980



Recognised for professional purposes by the Council of Legal Education; accredited by the Arbitrators' and Mediators' Institute of New Zealand.

Entry requirements
Academic pages 24-27
English language pages 30-31

waikato.ac.nz/go/LLB

Career options

- Solicitors or barristers in legal firms
- In-house lawyers in medium and large corporations
- Policy analysts in government departments, and independent organisations such as the Law Commission
- Researchers and advisers in environmental and resource management governing bodies
- Lawyers in international third sector organisations, i.e. Amnesty International and Greenpeace and union and employer organisations

Master of Laws (LLM)

The Master of Laws is an advanced programme which enables students to extend their knowledge of law acquired in their previous study and to gain deeper understanding of a particular area of interest. The programme can be completed in one year through the options of taught only or research papers, or a combination of the two.

The LLM allows graduates to undertake a wide range of work in specialised legal practices, local and central government agencies including policy-making and policy-advising. It is also aimed at students who want to go on to further academic study, such as PhD, and a possible future academic career.

Master of Laws in Māori/Pacific and Indigenous Peoples' Law (LLM Māori/Pacific Indigenous Peoples)

Passionate about indigenous issues? This masters programme allows students to study in-depth the historical and developing trends within the area of indigenous peoples' rights. Students develop skills to participate actively in the development of Pacific jurisprudence and to enhance global understanding of Pacific legal systems.

Intakes: February/July



1 year / 120 points
(full-time)



Approximate total
tuition fee NZ \$30,515

Entry requirements
Academic pages 28-29
English language pages 30-31

waikato.ac.nz/go/LLM

Postgraduate Diploma in Law (PGDipLaw)

A postgraduate law diploma adds value in the workplace and provides the opportunity to hone legal knowledge and skills.

This programme allows students to customise the content of their degree, based on their needs and requirements. Select Contract Law and Commercial Transactions Law; or focus on Dispute Resolution, Mediation or Property Issues in Family Law. Postgraduate diplomas provide the opportunity for continuing professional development in the same area as an original degree. A postgraduate diploma can often lead to a masters degree.

Intakes: February/July



1 year (full-time)



Approximate total
tuition fee NZ \$30,515

Entry requirements
Academic pages 28-29
English language pages 30-31

waikato.ac.nz/go/PGDip

Te Pua Wānanga ki te Ao – Faculty of Māori and Indigenous Studies

waikato.ac.nz/fmis

Te Pua Wānanga ki te Ao Faculty of Māori and Indigenous Studies is unique as the only faculty of its type in the world. Te Pua Wānanga ki te Ao aims to uplift the people of Aotearoa (New Zealand).

Qualifications

Bachelor of Arts (BA)	74
Bachelor of Social Sciences (BSocSc)	74
Master of Arts (MA)	75
Master of Māori and Pacific Development (MMPD)	75

Te Pua Wānanga ki te Ao represents innovation and tradition in teaching, learning and research, and provides national and international leadership in Māori, Pacific and indigenous issues and sustainable development. Te Pua Wānanga ki te Ao is distinctive in that it actively promotes Māori, Pacific and indigenous people's cultural and development issues through its teachings, learning, research, conferences and publications. A number of graduate papers are also available online. Staff of Te Pua Wānanga ki te Ao provide leadership and role modelling in teaching, learning, research and administration, and offer a full range of academic opportunities from undergraduate to postdoctoral teaching, learning and research. Believing strongly in its students, the faculty aims to help, strengthen and support them academically by providing a mentoring service.

Te Kotahi Research Institute (TKRI)

Te Kotahi Research Institute is the unified vision of Te Rōpū Manukura, a unique advisory body representing all iwi within the University's region. Te Kotahi Research Institute supports the work of the Pro Vice-Chancellor Māori to sustain iwi relationships and develop the research capacity amongst staff and students while realising the research needs and aspirations of iwi.

Centre for Māori and Indigenous Research (CMIR)

The strategic goal of the Centre for Māori and Indigenous Research is to uphold the University's commitment to the Treaty of Waitangi by becoming a centre of research excellence capable of fostering and facilitating the self-determination, self-governance and development efforts of indigenous peoples in New Zealand, Australia and Pacific rim countries.



Bachelor of Arts (BA)

Establish a foundation for encountering other world views, develop leadership qualities in indigenous communities, and make a positive contribution to the ongoing development of whānau, hapū and iwi with the Māori & Indigenous Studies Bachelor of Arts (BA).

The Māori & Indigenous Studies BA will teach students the fundamental bodies of knowledge in te reo and tikanga Māori, its distinctiveness, and the ability to think critically of its place locally, nationally and globally.

BA majors

- Māori Language/Te Reo Māori
- Māori and Indigenous Studies
- Pacific and Indigenous Studies.

Students can also select a minor from any subject within the University.

Career options

- Broadcaster
- Composer
- Government agency staff
- Teacher or educator.

Intakes: February/July



3 years (full-time)



Approximate first-year tuition fee NZ \$23,260

Entry requirements
Academic pages 24-27
English language pages 30-31

waikato.ac.nz/go/BA

Bachelor of Social Sciences (BSocSc)

Challenge your thinking about the world and the people who live in it while developing an appreciation of indigenous and global issues with the Māori & Indigenous Studies Bachelor of Social Sciences (BSocSc).

Students will gain the critical analysis skills and understanding to make a positive, relevant and innovative contribution to the social and economic development, the labour market and community of New Zealand, the Pacific and other indigenous contexts. The BSocSc covers a broad range of topics, including language, culture, indigeneity, politics, methods and theory, under the expert guidance of internationally recognised lecturers.

Majors

- Māori and Indigenous Studies
- Pacific and Indigenous Studies.

Students can also select a minor from any subject within the University.

Career options

- Community health worker
- Employment relations advocate
- Government agency staff
- Teacher or educator.

Intakes: February/July



3 years (full-time)



Approximate first-year tuition fee NZ \$23,260

Entry requirements
Academic pages 24-27
English language pages 30-31

waikato.ac.nz/go/BSocSc

Master of Arts (MA)

The recognition of Māori as an official language of Aotearoa has been accompanied by an acknowledgement of indigenous issues within society as a whole.

The MA will give students the skills and knowledge to think critically and communicate well from an indigenous perspective (Māori), to work independently and to see a major project through to completion.

The programmes within the MA host networks and relationships with a diverse range of national and international industry bodies. These include the wider education sector (particularly with secondary schools), linguistic and cultural groups, creative, theatrical and performing groups, embassies, government, business organisations, historical organisations, international organisations, and industrial and professional groups.

Enrolling in an MA gives students the opportunity to engage in independent (but supervised) research in one or more of a wide range of subjects. Graduating with an MA provides a gateway to a higher research degree or to a wide range of careers. Students may choose from the following subjects: Māori Language/Te Reo Māori, Māori Cultural Studies/Tikanga Māori, Māori Media and Communication. Our subjects equip MA graduates for specific careers. A Māori Cultural Studies MA graduate might work in the diplomatic service or become an international manager, trade commissioner, interpreter or translator – the possibilities are endless.

Intakes: February/July



1.5 years / 180 points
(full-time)

Note: Students with a relevant background may complete in 1 year / 120 points. It may also be possible to complete 180 points in 1 calendar year.



Approximate total tuition fee
1.5 years / 180 points
NZ \$42,990

1 year / 120 points
NZ \$28,660

Entry requirements
Academic pages 28-29
English language pages 30-31

waikato.ac.nz/go/MA

Majors in the MA

- Māori Language/Te Reo Māori
- Māori Cultural Studies/Tikanga Māori
- Māori Media and Communication.

Master of Māori and Pacific Development (MMPD)

The Master of Māori and Pacific Development (MMPD) builds on the knowledge of core indigenous concepts, cultural and historical understandings, ethical, methodological, environmental and sustainable development.

The Master of Māori and Pacific Development (MMPD) takes students through an advanced assessment of the underlying concepts and principles associated with social, cultural, political and economic development for indigenous peoples.

Students explore approaches to solving problems in the theory and practice of indigenous development, and more so in the realms of Māori and Pacific Development.

Intakes: February/July



1.5 years / 180 points
(full-time)

Note: Students with a relevant background may complete in 1 year / 120 points. It may also be possible to complete 180 points in 1 calendar year.



Approximate total tuition fees
1.5 years / 180 points
NZ \$42,995

1 year / 120 points
NZ \$28,660

Entry requirements
Academic pages 28-29
English language pages 30-31

waikato.ac.nz/go/MMPD

Faculty of Science and Engineering

sci.waikato.ac.nz

The Faculty of Science and Engineering is perfectly placed in the centre of New Zealand's leading scientific region. Our research and our internationally recognised teaching staff are supported by some of the world's most advanced laboratory equipment.

Waikato graduates go on to pursue rewarding careers in New Zealand and overseas, with the knowledge they are making a difference to the lives of others. There are two schools in the faculty (School of Science and School of Engineering) and many active research

groups, spanning a wide range of topics. Science and engineering graduates are trained to be innovative, multi-skilled and adaptable, and are employed in well-paid, interesting and stimulating occupations all over the world.

Qualifications

Bachelor of Engineering with Honours (BE(Hons))	76
Bachelor of Science (BSc)	77
Bachelor of Science with Honours (BSc(Hons))	77
Bachelor of Science (Technology) (BSc(Tech))	78
Master of Engineering (ME)	79
Master of Engineering Practice (MEngPrac)	79
Master of Environmental Sciences (MEnvSci)	82
Master of Science (MSc)	83
Master of Science (Research) (MSc(Research))	83
Master of Science (Technology) (MSc(Tech))	83

Environmental Research Institute (ERI)

The Environmental Research Institute undertakes multi-disciplinary environmental research across a range of ecosystems to inform policy and practices that will support effective environmental outcomes.

Research centres and units

- Centre for Biodiversity and Ecology Research (CBER)
- Energy Research Centre
- International Centre for Terrestrial Antarctic Research (ICTAR)
- Waikato Centre for Advanced Materials (WaiCAM)
- Waikato Radiocarbon Dating Laboratory research units
- Co-operative Education Unit
- Engineering Education Research Unit (EERU)
- Thermophile and Microbial Biochemistry and Biotechnology Unit (TRU)
- Waikato Stable Isotope Unit (WSIU).

Groups

- Cortical Modelling Group
- Coastal Marine Group
- Solar Energy Research Group (SERG)
- Waikato Agritech Group Facilities
- Waikato Biological Imaging Facility
- Waikato DNA Sequencing Facility
- Electronic Microscope Facility
- Mass Spectrometry Facility
- University of Waikato Herbarium.



Bachelor of Engineering with Honours (BE(Hons))

The Bachelor of Engineering with Honours (BE(Hons)) is a degree for creative thinkers who move instinctively from having an idea to making it happen. If you want to lead the way in innovation, improve infrastructure, build smarter technologies and find alternative energy sources, our BE(Hons) will help you achieve just that.

The degree focuses on how problems can be solved by using design and engineering processes. At every stage of the degree students will be involved in creating, designing and realising sophisticated engineering products.

In their first year, students complete a number of compulsory papers including Foundations of Engineering, where teams of students are challenged to design and build model boats over the course of a semester, culminating in a race day on the University's Oranga Lake.

In second year students begin to specialise, depending on the programme they have chosen to study. In years three and four, work placements form a large part of the programme. By the end of fourth year, students will have also completed a major research and design project with potential for commercial application – such as the pine tree seed planter designed and built in collaboration with tree improvement and treestock production business ArborGen Australasia.

Practical experience

Work placements are a major feature of the BE(Hons). Students will complete 800 hours relevant work experience during their degree. The University's Co-operative Education Unit actively seeks and oversees students' industrial work placements, ensuring a high quality work experience.

Facilities

The Large Scale Lab complex features a suite of workshops and laboratories dedicated to engineering teaching and research, including 3D printing, a mechanical workshop, and computer labs with engineering design software.

BE(Hons) majors

- Chemical and Biological Engineering
- Civil Engineering*
- Electronic Engineering
- Environmental Engineering*
- Materials and Process Engineering
- Mechanical Engineering
- Software Engineering.

**Provisional IPENZ accreditation scheduled for 2019.*

Intakes: February/July



4 years (full-time)



Approximate first-year tuition fee NZ \$32,455



Accredited by the Institute of Professional Engineers New Zealand (IPENZ), professionally recognised in 18 countries and regions, including Australia, the UK and the USA

Entry requirements
Academic pages 24-27
English language pages 30-31

waikato.ac.nz/go/BEHons

“ I've had a great experience with the BE(Hons) programme at the University of Waikato and I feel lucky to be a part of it. I'm glad I chose civil engineering, the style of teaching is interesting and I'm encouraged to be curious and excited about the world we live in. The University's environment is so friendly, I've always felt right at home. ”

– Lovepreet Singh, India
Bachelor of Engineering
with Honours



Bachelor of Science (BSc)

The Waikato Bachelor of Science (BSc) equips students for a career that requires logical thinking, analytical talent, a curious mind and practical skills.

The range of career options available to BSc graduates isn't surprising when you consider the nature of the degree. It is a flexible programme so you can combine papers to suit your strengths and interests. You will gain hands-on experience with some of the most up-to date and high-tech laboratory equipment available, such as our mass spectrometers for investigating molecular structure. The Bachelor of Science is a practical degree with laboratory and/or field work associated with most subjects.

BSc majors

- Chemistry
- Earth Sciences
- Ecology and Biodiversity
- Electronics
- Environmental Sciences
- Molecular and Cellular Biology
- Materials Science
- Psychology.

Students can choose to take a second major from the lists above or alternatively, a second major can be chosen from almost any other undergraduate subject.

Minors

Students can either select a minor from the science subjects listed below, or undertake a minor in any other subject within the University.

- Animal Behaviour
- Applied Physics
- Biochemistry
- Chemistry
- Coastal Processes
- Computer Science
- Ecology and Biodiversity
- Environmental Sciences
- Geology
- Hydrology
- Materials Science
- Mathematics
- Molecular and Cellular Biology
- Soil Science
- Statistics.

Bachelor of Science with Honours (BSc(Hons))

This is a 1 year qualification after the 3-year BSc.

Intakes: February/July



3 years (full-time)



Approximate first-year tuition fee NZ \$30,280

Entry requirements
Academic pages 24-27
English language pages 30-31

waikato.ac.nz/go/BSc

Career options

- Conservation biologist
- Conservation ranger
- Environmental scientist
- Forensic technician
- Geologist
- Geotechnical officer
- Laboratory technician
- Marine ecologist

Bachelor of Science (Technology) (BSc(Tech))

The Bachelor of Science (Technology) (BSc(Tech)) was the first degree of its kind in New Zealand and offers a unique approach to study.

The BSc(Tech) is designed to provide students with the necessary practical experience to stand out among other science graduates and includes 10 weeks of relevant work experience. The Co-operative Education Unit matches students with quality placement opportunities and offers reflective learning and skill development after the placements are completed. Students are regularly offered permanent jobs following their placements.

BSc(Tech) majors

- Chemistry
- Computer Science
- Earth Sciences
- Ecology and Biodiversity
- Environmental Sciences
- Materials Science
- Molecular and Cellular Biology.

Students can choose to take a second major from the lists above or alternatively, a second major can be chosen from almost any other undergraduate subject.

Minors

Students can either select a minor from the science subjects listed below, or undertake a minor in any other subject within the University.

- Animal Behaviour
- Applied Physics
- Biochemistry
- Chemistry
- Coastal Processes
- Computer Science
- Ecology and Biodiversity
- Environmental Sciences
- Geology
- Hydrology
- Materials Science
- Mathematics
- Molecular and Cellular Biology
- Soil Science
- Statistics.

Intakes: February/July



3 years (full-time)



Approximate first-year tuition fee NZ \$30,280

Entry requirements
Academic pages 24-27
English language pages 30-31

waikato.ac.nz/go/BScTech

Master of Engineering (ME)

This one-year degree is designed for graduates who wish to do further research and develop an innovative solution to an engineering problem through supervised research. Students will learn to further develop their independent problem-solving skills and the ability to think critically and creatively.

ME students can enrol in either a research thesis only or a combination of a thesis plus taught papers. The degree is only available to students who have completed a four-year BE(Hons) with significant engineering content.

Thesis topics available include Biological Engineering, Chemical Engineering, Civil Engineering, Electronic Engineering, Environmental Engineering, Materials Engineering, Process Engineering, Mechanical Engineering and Software Engineering.

Intakes: February/July



1 year (full-time)



Approximate total tuition fee NZ \$35,465

Entry requirements
Academic pages 28-29
English language pages 30-31

waikato.ac.nz/go/ME

Master of Engineering Practice (MEngPrac)*

The MEngPrac programme is a taught masters degree that enhances specialist technical knowledge in strategic areas such as electronics and applied electromagnetics, mechanical engineering and mechatronics, and materials and processing, relevant to current and anticipated future needs from industry.

Due to the rapid advances of existing technologies, the programme is designed for recent graduates and practising engineers who want to upgrade and update their knowledge in these fields.

The programme offers a good selection of business management electives, enhancing career options for those graduates and engineers who wish to take up management roles. The programme's capstone project provides research experience that may support career development and may also prepare students for future PhD study.

Intakes: February/July



1 – 1.5 years / 120 – 180 points, depending on the student's choice of subjects



TBC

Entry requirements
Academic pages 28-29
English language pages 30-31

waikato.ac.nz/go/MEngP

**Subject to final approval by Universities New Zealand.*



Ben McGuinness, PhD candidate, Engineering

Master of Environmental Sciences (MEnvSci)

The Master of Environmental Sciences (MEnvSci) is an innovative, interdisciplinary degree that offers practical research skills and advanced theoretical knowledge. This programme crosses the existing borders of science, with an environmental focus in the areas of ecology, geochemistry, analytical chemistry, and earth sciences.

A key feature of this degree is the development of scientific and interdisciplinary research skills, including collection and analysis of data and critical review of the relevant literature. Opportunities exist within the MEnvSci for students to broaden their research area and take papers from the Faculty of Arts & Social Sciences, Waikato Management School, the Faculty of Māori and Indigenous Studies, and the Faculty of Law.

Intakes: February/July



1.5 years /180 points
(full-time)

Note: Students with a relevant background may complete in 1 year / 120 points. It may also be possible to complete 180 points in 1 calendar year.



Approximate total tuition fees
1.5 years/ 180 points
NZ \$48,925

1 year / 120 points
NZ \$32,615

Entry requirements
Academic pages 28-29
English language pages 30-31

waikato.ac.nz/go/MEnvSci



Master of Science (MSc)

The MSc is normally a 1.5 year full-time programme of study.

It is a research-focused degree, where the combination of research and taught papers is tailored to suit prior learning experiences. It combines taught papers with a research thesis. The balance of thesis to taught papers may be altered subject to agreement from the graduate co-ordinator in the student's discipline of choice. The MSc is a degree that is customised to provide excellent career opportunities and a great background for further study. Applicants must have a B average in their final bachelor year.

Intakes: February/July



1.5 years / 180 points
(full-time)

Note: Students with a relevant background may complete in 1 year / 120 points. It may also be possible to complete 180 points in 1 calendar year.



Approximate total tuition fees
1.5 years / 180 points
NZ \$48,925
1 year / 120 points
NZ \$32,615

Entry requirements
Academic pages 28-29
English language pages 30-31

waikato.ac.nz/go/MSc

Master of Science (Research) (MSc(Research))

The MSc(Research) is normally a two-year coherent, advanced programme of study.

It is an internationally recognised qualification, valued for its flexibility and close association with world-class research. It is a degree tailored to provide excellent career opportunities and a great background for further study. It combines taught papers with a research thesis or dissertation, and may be completed on a part-time basis.

Intakes: February/July



2 years (full-time)



Approximate total
tuition fee NZ \$65,230

Entry requirements
Academic pages 28-29
English language pages 30-31

waikato.ac.nz/go/MScResearch

Master of Science (Technology) (MSc(Tech))

A Master of Science (Technology) is normally a two-year advanced programme of study that builds on students' knowledge from the BSc(Tech) degree.

It is similar to the MSc, but has two important differences – it combines taught papers with an applied or industrial-based research thesis or dissertation, and it includes two papers on industrial technology and innovation. It gives students a great depth and breadth of knowledge of science and technology, particularly relating to technological issues in the industrial sector of the New Zealand economy.

Subjects available

- Biological Sciences
- Chemistry
- Computer Science
- Earth Sciences
- Electronics
- Materials and Processing
- Physics.

Intakes: February/July



2 years (full-time)



Approximate total
tuition fee NZ \$64,450

Entry requirements
Academic pages 28-29
English language pages 30-31

waikato.ac.nz/go/MScTech

Waikato Management School

cms.mngt.waikato.ac.nz

Waikato Management School is a Triple Crown-accredited, world-class business school, respected internationally for high-quality teaching, practical student experiences and industry-relevant research.

Waikato Management School is located in one of New Zealand's most dynamic, export-led regions. There is no better place to study international business, entrepreneurship, and how to build

innovative, high-performing organisations. Management School academics are business consultants and active researchers with international connections. Students are exposed to the latest business

Qualifications

Bachelor of Business Analysis (BBA)	88
Bachelor of Business (BBus)	90
Bachelor of Communication Studies (BCS)	91
Bachelor of Management Studies with Honours (BMS(Hons))	92
Master of Business and Management (MBM)	93
Master of Digital Business (MDigiBus)	94
Master of Management Studies (MMS)	94
Master of Professional Accounting (MPAcct)	95

insights and take part in real-world business challenges. They graduate with a comprehensive understanding of management and go on to become leaders in the public and private sectors.

Rankings and accreditations

Triple Crown Accreditation

Waikato Management School is ranked in the world's top 1% of business schools, having achieved the coveted Triple Crown Accreditation from three of the world's most prestigious accreditation bodies: EQUIS, AMBA and AACSB. This is an international benchmark of excellence in business education.

Subjects in the top 250 QS World University Subject Rankings 2017:

- Accounting and Finance (top 150)
- Business and Management Studies
- Economics and Econometrics
- Tourism and Hospitality Management (24th).

Waikato is ranked 16th in the world for hospitality and tourism management in the Academic Ranking of World Universities 2017. Waikato Management School also hosts New Zealand's only Tourism Monitoring Observatory, which measures the impact of tourism on the environment on behalf of the United Nations World Tourism Organisation.

Waikato's public relations programme is one of only eight at a university outside the United States that is recognised by the Public Relations Society of America (PRSA) for providing students with an outstanding learning experience.

Institute for Business Research

Waikato Management School's Institute for Business Research is known for its cutting-edge research. Staff have a wealth of expertise in areas ranging from innovation to economic impact analysis. Staff within the Institute work with industry, government agencies and other organisations to enhance productivity and contribute to sustainable business.



Bachelor of Business Analysis (BBA)

Do you have a good head for numbers, or enjoy looking for trends behind hard data to make better-informed business decisions?

The BBA(Fin) is a specialist three-year degree that will open career opportunities in accounting, economics, investment banking, stock broking and the financial sector. A first major will be in accounting, economics or finance.

BBA students develop strong quantitative skills in financial or economic analysis, required for many jobs working in government or the private sector. For example, students could end up advising clients on growing their investment portfolios, or help government make better-informed policy decisions on the economy, jobs and the environment.

If students choose to major in accounting, they have the option to use this degree as a fast-track route towards becoming a chartered accountant, by taking specific papers. This will ensure you meet the academic requirements for provisional CA membership of Chartered Accountants Australia and New Zealand (CA ANZ), CPA Australia, or the Association of Chartered Certified Accountants (ACCA).

BBA first majors

- Accounting
- Economics
- Finance.

Second majors or minors

Any of the subjects listed below can be taken as a second major or minor, or students can choose any other subject offered at Waikato as their second major or minor.

- | | |
|---|--|
| • Accounting | • Marketing |
| • Agribusiness (minor only) | • Public Relations |
| • Digital Business | • Strategic Management |
| • Economics | • Supply Chain Management (minor only) |
| • Finance | • Tourism and Hospitality Management. |
| • Human Resource Management | |
| • Leadership Communication (minor only) | |

Intakes: February/July



3 years (full-time)



Approximate first-year tuition fee \$27,165



Triple Crown-accredited internationally recognised business school

Entry requirements
Academic pages 24-27
English language pages 30-31

waikato.ac.nz/go/BBA

Career options

- Accountant
- Auditor
- Business analyst
- Investment or commercial banker
- Chartered accountant
- Economist
- Financial analyst
- International trade adviser
- Policy analyst
- Portfolio manager
- Sharebroker
- Taxation adviser

Rankings and accreditation

Waikato Management School ranks in the world's top 150 universities for Accounting and Finance (QS Subject Rankings) and in the top 250 for Business & Management Studies and Economics.

Practical experience

The BBA has a strong practical focus, using industry software such as MYOB, Xero and Excel to prepare financial records and communicate advice to clients. In third year, students test their skills in the real world by completing either a workplace internship or an applied research project.

Extracurricular opportunities

You can join a wide range of student clubs to meet like-minded students and take part in employer networking, training and social events. These include the Waikato Management School Students' Association (WMSSA), Beta Alpha Psi (Accounting), the Economics Discussion Group, the Pacific Islands Management Students' Association (PIMSA), and Social Innovation Waikato.



“ A highlight of my studies so far was a group project I did in my first year. We acted on behalf of a pretend client to research and advise them on investment opportunities. It was a great way to learn what I might come across in a real-world workplace.

“My degree has given me the opportunity to be involved in student clubs, such as being a Beta Alpha Psi committee member and a student representative for CAANZ (Chartered Accountants Australia and New Zealand).”

– Qi Xuan Wong, Malaysia
Bachelor of Business Analysis

Bachelor of Business (BBus)

If you're a forward-thinker who wants to help drive the changes needed for businesses to thrive in the 21st century, Waikato's three-year Bachelor of Business (BBus) will help you achieve your goals.

Looking for a dynamic business career that puts you at the forefront of strategic and technological changes? Waikato Management School's new Bachelor of Business prepares students to lead a successful organisation, or start their own entrepreneurial business.

BBus students gain essential insights into why companies need to be agile and innovative to succeed in a 24/7 global marketplace, and develop fundamental business knowledge such as how to manage international supply chains or bring new products to market.

Students graduate equipped to manage transformative business projects, make an organisation more profitable and efficient, and apply their critical thinking to find creative solutions for problems.

Students are introduced to accounting, economics, finance, marketing, digital business, strategy and supply chain management, before taking more advanced papers in their major subject/s.

Practical experience

In third year, students test their skills in the real world by completing either a workplace internship or an applied research project.

BBus first majors

- Accounting
- Digital Business*
- Economics
- Finance
- Human Resource Management
- Marketing
- Public Relations*
- Strategic Management
- Tourism and Hospitality Management.*

* Subject to CUAP approval

Second majors or minors

Any of the subjects listed below can be taken as a second major or minor, or students can choose any other subject offered at Waikato.

- Accounting
- Agribusiness (minor only)
- Digital Business
- Economics
- Finance
- Human Resource Management
- Leadership Communication (minor only)
- Marketing
- Public Relations
- Strategic Management
- Supply Chain Management (minor only)
- Tourism and Hospitality Management.

Intakes: February/July



3 years (full-time)



Approximate first-year tuition fee NZ \$27,165



Triple Crown-accredited internationally recognised business school

Opportunity to meet CAANZ, CPA and ACCA academic requirements for accounting

Entry requirements
Academic pages 24-27
English language pages 30-31

waikato.ac.nz/go/BBus

Career options

- Business consultant/analyst
- Chartered accountant
- Customer experience manager
- Digital business manager
- Economist
- Entrepreneur
- Financial adviser
- Logistics/operations manager
- Marketing manager
- People and capability manager
- Tourism operations manager

Bachelor of Communication Studies (BCS)

Communication is a powerful tool. Learn how to use this power strategically and creatively to engage and influence people, help companies attract loyal customers, build reputations, and drive organisational success.

The Bachelor of Communication Studies (BCS) is a three-year specialist degree that blends business theory with expertise in using strategic communication. Gain the up-to-date industry skills required to become a public relations or marketing specialist. Harness the power of communication to develop creative PR or marketing campaigns that will attract new customers, or influence people's attitudes and behaviour on specific issues. You'll learn how to create engaging content that tells a compelling story, develop a marketing plan to launch a new product, write media releases, understand what drives consumers to purchase, and how to build or repair an organisation's reputation.

BCS first majors

- Public Relations
- Marketing.

If students wish to take a second major, this can be chosen from either Public Relations or Marketing or almost any other undergraduate subject.

Intakes: February/July



3 years (full-time)



Approximate first-year tuition fee NZ \$27,165



Triple Crown-accredited internationally recognised business school

Certified by the Public Relations Society of America

Entry requirements
See pages 24-27 and 30-31

waikato.ac.nz/go/BCS

Career options

- Advertising account manager
- Content/web editor
- Communications adviser
- Digital marketing specialist
- Events manager
- Marketing/sales manager
- Management consultant
- Public relations adviser
- Press secretary

Bachelor of Management Studies with Honours (BMS(Hons))

With this exceptional four-year honours degree, you will gain the strategic insights to become a future-focused business leader and help companies achieve international success.

Waikato's BMS(Hons) is New Zealand's premium four-year business degree, offering both a professional and research stream in the final year. It's aimed at top students who want to become globally minded business leaders, with the dynamic capabilities to tackle complex challenges facing organisations in the modern era.

To excel in business, students need to understand all the key areas of management, from accounting, economics and finance through to marketing, strategy, digital business and supply chain. And that's exactly what this comprehensive degree delivers.

Through practical assignments and case studies, the BMS(Hons) will enable students to develop business strategies for sustainable growth, build a culture of innovation, and help companies succeed in international markets.

BMS(Hons) first majors

- Accounting
- Digital Business*
- Economics
- Finance
- Human Resource Management
- Marketing
- Public Relations*
- Strategic Management
- Tourism and Hospitality Management. *

* Subject to CUAP approval

Students can choose to take a second major from the list above or a second major can be chosen from almost any other undergraduate subject.

Second majors or minors

Any of the subjects listed below can be taken as a second major or minor, or students can choose any other subject offered at Waikato.

- Accounting
- Agribusiness (minor only)
- Digital Business
- Economics
- Finance
- Human Resource Management
- Leadership Communication (minor only)
- Marketing
- Public Relations
- Strategic Management
- Supply Chain Management (minor only)
- Tourism and Hospitality Management.

Intakes: February/July



4 years (full-time)



Approximate first-year tuition fee NZ \$27,165



Triple Crown-accredited internationally recognised business school

Opportunity to meet CAANZ, CPA and ACCA academic requirements for accounting

Entry requirements
Academic pages 24-27
English language pages 30-31

waikato.ac.nz/go/BMSHons

Career options

- Business/systems analyst
- Chartered accountant
- CEO/General manager
- Economist
- Financial adviser
- International trade negotiator
- Management consultant
- Marketing manager
- Logistics/operations manager
- People and capability manager

Master of Business and Management (MBM)

The MBM is a one-year taught masters degree for graduates who want to prepare for a successful business career in today's fast-changing global economy, and increase their earning potential.

It provides practical, comprehensive training in all aspects of management – from strategy and finance through to digital business and marketing – that will complement an undergraduate degree from any discipline. No prior business experience is required.

The MBM will provide the skills and up-to-date knowledge required for a wide range of management and leadership roles in modern organisations.

It is designed to guarantee a challenging and rewarding learning experience. Significant emphasis is placed on leadership, creative problem-solving, and reflective learning. During this degree students work in teams to develop an entrepreneurial business and take part in a 'Dragon's-Den' style competition.

Students also complete a one-month internship at a local company, to undertake an applied business research project. Students study with experienced lecturers at Waikato's Triple Crown-accredited management school, which is ranked in the top 1% of business schools globally.

Intakes: March/November



1 year (full-time)



Approximate total tuition fee NZ \$37,440



Triple Crown-accredited internationally recognised business school

Top 250 for Business and Management Studies in QS World University Rankings

Entry requirements
Academic pages 28-29
English language pages 30-31

waikato.ac.nz/go/MBM

“ I chose the University of Waikato's MBM because of the Management School's position in the QS World University Rankings and Triple Crown Accreditation. The MBM has transformed my outlook on things and has further fuelled my passion for learning. After my first semester I feel like a different person and I've gained more knowledge and experience than I had expected. I have had the chance to befriend and work with such a diverse group of people and am excited for future opportunities at Waikato. ”

– Vij Singh, India
Master of Business and Management



Master of Digital Business (MDigiBus)

Set yourself up for where the world of digital business is going with specialised postgraduate study in this cutting-edge field.

Gain an in-depth understanding of how the latest digital technologies and e-commerce are transforming all aspects of business operations from a management perspective. The MDigiBus is offered in two streams, either taught or research, and is open to graduates of all disciplines. The professional stream includes an 8–13 week industry internship working on a real project, making it ideal for students who want to acquire applied knowledge in a business environment. An online study option is also available. Explore topics such as big data, cloud computing, beacon technology, gamification, social media, business intelligence, real-time analytics, automated logistics, e-government, and much more.

Intakes: February/July



1 year / 120 points
(full-time)
Online study option.



Approximate total
tuition fee NZ \$27,970

Entry requirements
Academic pages 28–29
English language pages 30–31

waikato.ac.nz/go/MDigiBus

Master of Management Studies (MMS)

Rise to the top of your profession and become an industry leader by undertaking postgraduate research in a specialist area of management.

The Master of Management Studies will bring you closer to the frontiers of knowledge in your specialist field and prepare you for leadership or research roles that require a high level of critical thinking and information analysis. The MMS normally includes taught and research papers, but can also be taken as a full research degree.

Specialist subjects available

- Accounting
- Agribusiness
- Applied Economics and Finance
- Economics
- Finance
- Finance – Professional (starting late 2018)
- Human Resource Management
- International Management
- Leadership Communication
- Management and Sustainability
- Management Systems
- Marketing
- Public Relations
- Strategic Management
- Tourism and Hospitality Management.

Intakes: February/July



1.5 years / 180 points
(full-time)

Note: Students with a relevant background may complete in 1 year / 120 points. It may also be possible to complete 180 points in 1 calendar year.



Approximate total tuition fees
1.5 years / 180 points
NZ \$42,000
1 year / 120 points
NZ \$27,790

Entry requirements
Academic pages 28–29
English language pages 30–31

waikato.ac.nz/go/MMS

Master of Professional Accounting (MPAcct)

Establish your career pathway towards becoming a provisional chartered accountant with this accelerated 14-month masters degree, endorsed by three leading professional accounting bodies.

This intensive 14-month programme is designed for students who have never studied accounting before at university, and is open to graduates of all disciplines. Completing the MPAcct will prepare students for a professional career in accounting and ensure they meet the academic requirements to gain provisional membership of Chartered Accountants Australia and New Zealand (CA ANZ), CPA Australia, or the Association of Chartered Certified Accountants (ACCA). This ensures a qualification that is globally recognised.

Intakes: January/November



14 months / 220 points
(full-time)



Approximate total
tuition fee NZ \$39,950

Entry requirements
Academic pages 28-29
English language pages 30-31

waikato.ac.nz/go/MPAcct



Higher degrees by research

The University offers supervised research degrees through the Master of Philosophy (MPhil), Doctor of Philosophy (PhD), the Doctor of Musical Arts (DMA), and professional doctorates; the Doctor of Education (EdD) and Doctor of Juridical Science (SJD).

Studying for any one of these degrees provides an exciting opportunity to work under the supervision of a team of research experts. University of Waikato academic staff are internationally connected, well-resourced, and benchmarked against the best in the world. As creators of knowledge, we encourage students to be leaders and innovators and, as a result, we produce research masters and doctorate graduates who contribute and compete at a global level in their chosen fields. The University of Waikato Expert's File can help graduate students to contact University of Waikato staff with expertise in specialist areas. For more information visit waikato.ac.nz/staff-profiles

Master of Philosophy (MPhil)

1 – 1.5 years

This programme requires the completion of a thesis.

Entry requirements

Applicants require an honours degree or masters degree.

Available within the areas of

- Arts and Social Sciences
- Computer Science, Mathematics and Statistics
- Education
- Engineering
- Geography, Music, Psychology
- Law
- Māori and Pacific Development
- Management Science.

Doctor of Musical Arts (DMA)

3 years full-time

The DMA is a research degree. Candidates undertake supervised research comprising musical performance in the form of works of artistic and creative merit supported by a written research thesis of 50,000 words.

Entry requirements

A qualification considered equivalent to a masters degree in music with at least Second Class Honours (First Division). Candidates must also audition successfully on an applied instrument or voice.

Doctor of Education (EdD)

3 years full-time

This is a research degree. It involves one-third guided study and two-thirds thesis. This is a professional doctorate for senior practitioners in education.

Entry requirements

Students require a strong record of professional experience in education, a masters degree and research experience.

Doctor of Juridical Science (SJD)

3 years full-time

This programme is designed for academic lawyers or senior practitioners who wish to develop their practice by surveying the very latest thinking in a particular area of expertise and contributing to this body of knowledge through their own research.

The SJD programme comprises the formation of a research portfolio and a 60,000 word thesis over three years full-time enrolment. All components of this qualification are internally and externally assessed by leading academics in specialist fields. The SJD takes up to three years to complete.

Entry requirements

Students require a strong record of professional experience in law, a masters degree and research experience.

Doctor of Philosophy (PhD)

This is a research degree culminating in the presentation of a thesis. You are expected to make an original contribution to knowledge while extending your research skills.

If accepted by the University of Waikato Postgraduate Research Committee for a higher degree, students will be provided with expert supervision in the intended area of research and can be assured that the resources required for that research are available.

Entry requirements

Students require a masters degree with at least second class honours (first division), and research experience before starting.

Available within the areas of

- Arts and Social Sciences
 - Computer Science, Mathematics and Statistics
 - Education
- Engineering
 - Law
 - Māori and Pacific Development
 - Management
 - Science.


Doctor of Philosophy (PhD)


New international PhD students, studying full-time may be eligible to pay domestic New Zealand annual tuition fees.

Fees are subject to annual increases.

Degree area	Tuition fees
Arts, Humanities, Social Sciences	NZ \$6,018
Computer Science, Fine Arts, Music and Performing Arts	NZ \$6,391
Engineering, Technology	NZ \$6,391
Business, Accounting, Management, Law	NZ \$6,142
Science	NZ \$6,391

Intakes: February/July

 Minimum 3 years (full-time)

 See table below

Entry requirements
English language pages 30-31

waikato.ac.nz/go/PhD

Higher degree application process

The application closing dates for 2018 are 1 March, 1 July and 1 November. Applications can only be completed online. If this is not possible, please contact the University by emailing **doctoralenrolments@waikato.ac.nz**

If your application or any required documentation arrives after one of these dates, your application will be considered in the following application round.

Research expertise database

We strongly recommend you search our research expertise database, which holds the research profiles of the University's supervising staff. Here you will see if there is an academic undertaking research in your area of interest. You may wish to contact an academic to discuss possible supervision but it is not required before you submit your application.

waikato.ac.nz/staff-profiles

How to apply

PhD applicants apply online through the University online application portal at **waikato.ac.nz/enrol**

Please be sure to upload all relevant documentation as assessment cannot commence until this is done. All required documents must be received before the application closing date.

Documentation required

- A completed supplementary form — this is where you will provide the contact details for your academic referees and the name of any Waikato academic you may have been speaking to
- A Statement of Research Interest
- A sample of your academic writing
- Copies of academic transcripts and certificates
- Copy of passport
- Evidence of English language proficiency.

Academic references

Ensure that your two academic referees submit their letters of recommendation by the application closing date for which you are applying. Academic referees must submit their references directly to **doctoralenrolments@waikato.ac.nz**

Offer of a place

You will receive email notification of the outcome of your application and if appropriate, your scholarship application six weeks after the closing date. An offer of place in the higher degree programme will only be valid for 12 months.



Your journey to Waikato

It's a good idea to start planning for university early. This will allow you to complete all the necessary steps you need to take before arriving at the University of Waikato.

1

Get study advice

You can get advice about your study options and find out more about our programmes by talking to one of our recruitment advisers (email international@waikato.ac.nz) or using an approved University of Waikato recruitment agent in your home-country, visit waikato.ac.nz/students/international/agents.shtml

2

How to apply

Apply to study at Waikato at waikato.ac.nz/enrol For more information on how to apply see page 23.

3

Check the entry requirements

As an international student you need to meet academic (pages 24-27) and English language entry requirements (pages 30-31) for our programmes. If you do not meet these requirements, refer to our pathway programmes on pages 32-34.

4

Receiving an offer

If your application is successful you will receive an offer to study at Waikato. Your offer will be either a formal offer (not conditional on anything) or a conditional offer. If your offer is conditional you may need to enrol in a pathway programme to meet your entry requirements, or you may need to provide further information to us.

5

Accept your offer – pay your first year's tuition fees

To formally accept your offer to study at Waikato you will need to pay your first year's tuition fees. Find out how to pay your fees online or through another method: waikato.ac.nz/students/international/before-you-come-to-nz/tuition-payments

6

Apply for your student visa

Once you have paid your fees, you can use your receipt and your offer letter from the University to apply to Immigration New Zealand for your student visa. Find out about New Zealand visa options and how to apply at immigration.govt.nz

7

Preparing to come to New Zealand

To ensure you arrive in New Zealand with everything you need to complete your enrolment at the University, and to settle into your new home, please visit the "preparing to come to New Zealand" section of our website: waikato.ac.nz/study/international/preparing-to-come-to-nz

8

Enrolment on campus

To officially enrol at the University, you will need to show your student visa and any other required documentation, including evidence of medical and travel insurances, or purchase the University's insurance policy. Download and view our pre-arrival guide for more information on how to enrol: waikato.ac.nz/students/international/documents/predepartureguide.pdf

9

Arriving in New Zealand

You can arrange to be collected from the airport for free by the University. If you choose to do this, you will be delivered to your accommodation and you will receive a welcome pack from the University with key information to help you through your first few days in New Zealand.

10

International orientation

You need to attend a compulsory Orientation session for all international students. Visit waikato.ac.nz for dates and schedules.

Choose your subject

A

Accounting

Qualifications

Bachelor of Business *page 90*
Bachelor of Business Analysis with Honours *page 88*
Bachelor of Management Studies with Honours *page 92*
Graduate Certificate
Graduate Diploma
Postgraduate Certificate
Postgraduate Diploma
Master of Management Studies *page 94*
Master of Professional Accounting *page 95*

Agribusiness

Qualifications

Bachelor of Business *page 90*
Bachelor of Management Studies with Honours *page 92*
Graduate Diploma
Postgraduate Certificate
Postgraduate Diploma
Master of Management Studies *page 94*

Anthropology

Qualifications

Bachelor of Arts *page 38*
Bachelor of Social Sciences *page 42*
Graduate Certificate
Graduate Diploma
Postgraduate Certificate
Postgraduate Diploma
Master of Arts *page 45*
Master of Social Sciences *page 47*

Applied Computing

Qualifications

Bachelor of Science *page 53*
Graduate Certificate
Graduate Diploma

B

Biological Sciences

Qualifications

Postgraduate Certificate
Postgraduate Diploma
Master of Science *page 85*
Master of Science (Research) *page 85*
Master of Science (Technology) *page 85*

C

Chemical and Biological Engineering

(See Engineering)

Qualifications

Bachelor of Engineering with Honours *page 78*

Chemistry

Qualifications

Bachelor of Science/with Honours *page 80*
Bachelor of Science (Technology) *page 81*
Graduate Certificate
Graduate Diploma
Postgraduate Certificate
Postgraduate Diploma
Master of Science *page 85*
Master of Science (Research) *page 85*
Master of Science (Technology) *page 85*

Chinese

(See International Languages and Culture)

Qualifications

Bachelor of Arts *page 38*
Master of Arts *page 45*

Civil Engineering

Qualifications

Bachelor of Engineering with Honours *page 78*

Community Health

Qualifications

Bachelor of Health, Sport and Human Performance *page 66*

Communication Design

Qualifications

Bachelor of Design *page 52*

Computer Graphic Design

Qualifications

Bachelor of Design *page 52*
Graduate Certificate
Graduate Diploma
Postgraduate Diploma in Computer Graphic Design
Master of Computer Graphic Design *page 54*

Computer Science

Qualifications

Bachelor of Computing and Mathematical Sciences with Honours *page 50*
Bachelor of Science with Honours *page 53*
Bachelor of Science (Technology) *page 81*
Graduate Certificate
Graduate Diploma
Postgraduate Certificate
Postgraduate Diploma
Master of Science *page 85*
Master of Science (Research) *page 85*
Master of Science (Technology) *page 85*

Counsellor Education

Qualifications

Master of Counselling *page 61*

Creative Writing

Qualifications

Bachelor of Arts *page 38*

Cyber Security

Qualifications

Postgraduate Diploma
Master of Cyber Security *page 54*

D

Data Analytics

Qualifications

Bachelor of Science *page 53*
Bachelor of Computing and Mathematical Sciences with Honours *page 50*

Demography

Qualifications

Postgraduate Certificate
Postgraduate Diploma
Master of Social Sciences *page 47*

Digital Business

Qualifications

Bachelor of Business *page 90*
Bachelor of Management Studies with Honours *page 92*
Graduate Certificate
Graduate Diploma
Postgraduate Certificate
Master of Digital Business *page 94*

Digital Learning

Qualifications

Bachelor of Social Sciences *page 61*

Disability and Inclusion Studies

Qualifications

Postgraduate Certificate
Postgraduate Diploma
Master of Disability and Inclusion Studies *page 61*

E

Earth Sciences

Qualifications

Bachelor of Science *page 80*

Bachelor of Science (Technology) *page 81*

Graduate Certificate

Graduate Diploma

Postgraduate Certificate

Postgraduate Diploma

Master of Science *page 85*

Master of Science (Technology) *page 85*

Master of Science (Research) *page 85*

Ecology and Biodiversity

Qualifications

Bachelor of Science *page 80*

Bachelor of Science (Technology) *page 81*

Economics

Qualifications

Bachelor of Arts *page 38*

Bachelor of Business Analysis with Honours *page 88*

Bachelor of Management Studies with Honours *page 92*

Bachelor of Social Sciences *page 42*

Graduate Certificate

Graduate Diploma

Postgraduate Certificate

Postgraduate Diploma

Master of Management Studies *page 94*

Master of Social Sciences *page 47*

Education

Qualifications

Diploma in Education

Graduate Diploma

Postgraduate Certificate

Postgraduate Diploma

Master of Education *page 62*

Educational Leadership

Qualifications

Postgraduate Certificate (School Principalship)

Postgraduate Diploma (Educational Leadership Coaching and Mentoring)

Postgraduate Diploma (Educational Leadership)

Master of Educational Leadership *page 63*

Education and Society

Qualifications

Bachelor of Arts *page 38*

Bachelor of Social Sciences *page 61*

Master of Arts *page 45*

Master of Education *page 62*

Master of Social Sciences *page 47*

Education Studies

Qualifications

Postgraduate Certificate

Postgraduate Diploma

Electronic Engineering

Qualifications

Bachelor of Engineering with Honours *page 78*

(See Engineering)

Electronics

Qualifications

Bachelor of Science *page 80*

Graduate Certificate

Graduate Diploma

Postgraduate Certificate

Postgraduate Diploma

Master of Engineering *page 82*

Master of Engineering Practice* (subject to approval) *page 82*

Master of Science *page 85*

Master of Science (Technology) *page 85*

Master of Science (Research) *page 85*

Engineering

Qualifications

Bachelor of Engineering with Honours *page 78*

Graduate Diploma

Master of Engineering *page 82*

English

Qualifications

Bachelor of Arts *page 38*

Graduate Certificate

Graduate Diploma

Postgraduate Certificate

Postgraduate Diploma

Master of Arts *page 45*

English as a Second Language

Entrepreneurship and Innovation

Qualifications

Graduate Diploma

Postgraduate Diploma

Environment and Society

Qualifications

Postgraduate Diploma in Environment and Society

Master of Environment and Society *page 46*

Environmental Engineering

Qualifications

Bachelor of Engineering with Honours *page 78*

Environmental Planning

Qualifications

Bachelor of Arts *page 38*

Bachelor of Environmental Planning *page 39*

Bachelor of Social Sciences *page 42*

Graduate Certificate

Graduate Diploma

Postgraduate Certificate

Postgraduate Diploma

Master of Environmental Planning *page 46*

Environmental Sciences

Qualifications

Bachelor of Science *page 80*

Bachelor of Science (Technology) *page 81*

Master of Environmental Sciences *page 83*

Master of Science (Research) *page 85*

Ethics

Qualifications

Graduate Certificate

Graduate Diploma

F

Finance

Qualifications

Bachelor of Business *page 90*

Bachelor of Business Analysis with Honours *page 88*

Bachelor of Management Studies with Honours *page 92*

Graduate Certificate

Graduate Diploma

Postgraduate Certificate

Postgraduate Diploma

Master of Management Studies *page 94*

French

(See International Languages and Culture)

Qualifications

Bachelor of Arts with Honours *page 38*

Master of Arts *page 45*

G

Geography

Qualifications

Bachelor of Arts *page 38*

Bachelor of Social Sciences *page 42*

Graduate Certificate

Graduate Diploma

Postgraduate Certificate

Postgraduate Diploma

Master of Arts *page 45*

Master of Social Sciences *page 47*

H

Health Development and Policy

Qualifications

Bachelor of Social Sciences *page 42*

Master of Social Sciences *page 47*

Health, Sport and Human Performance

Qualifications

Bachelor of Health, Sport and Human Performance *page 66*

Master of Health, Sport and Human Performance *page 67*

History

Qualifications

Bachelor of Arts *page 38*

Bachelor of Social Sciences *page 42*

Graduate Certificate

Graduate Diploma

Postgraduate Certificate

Postgraduate Diploma

Master of Arts *page 45*

Master of Social Sciences *page 47*

Human Development

Qualifications

Bachelor of Arts *page 38*

Bachelor of Social Sciences *page 42*

Graduate Certificate

Graduate Diploma

Postgraduate Certificate

Postgraduate Diploma

Master of Education *page 62*

Master of Social Sciences *page 47*

Human Performance Science

Qualifications

Bachelor of Health, Sport and Human Performance *page 66*

Human Resource Management

Qualifications

Bachelor of Business *page 90*

Bachelor of Management Studies with Honours *page 92*

Graduate Certificate

Graduate Diploma

Postgraduate Certificate

Postgraduate Diploma

Master of Management Studies *page 94*

I

Industrial Relations and Human Resource Management

Qualifications

Bachelor of Social Sciences *page 42*

Information Technology

Qualifications

Postgraduate Certificate in Information Technology *page 56*

Master of Information Technology *page 56*

Interface Design

Qualifications

Bachelor of Design *page 52*

International Languages and Cultures

Note: Chinese, French, Japanese and Spanish may be taken as pathways within this major. Languages are also available as a minor within the BA, BBA, BCS, BMS, BSc, BSc(Tech) and BSocSc.

Qualifications

Bachelor of Arts (International Languages and Cultures) *page 38*

Graduate Certificate

Graduate Diploma

Postgraduate Certificate (Chinese, French, Japanese)

Postgraduate Diploma (Chinese, French, Japanese)

Master of Arts (Chinese, French, Japanese or Spanish) *page 45*

International Management

Qualifications

Postgraduate Certificate

Postgraduate Diploma

Master of Management Studies *page 94*

International Relations and Security Studies

Qualifications

Postgraduate Certificate

Postgraduate Diploma

Master of Arts *page 45*

J

Japanese

(See International Languages and Culture)

Qualifications

Bachelor of Arts *page 38*

Master of Arts *page 45*

L

Labour Studies

Qualifications

Bachelor of Social Sciences *page 42*

Master of Social Sciences *page 47*

Law

Qualifications

Diploma of Law

Bachelor of Laws with Honours *page 70*

Graduate Diploma (in Law or in New Zealand Legal Studies)

Postgraduate Diploma

Master of Laws *page 71*

Master of Laws in Māori/Pacific and Indigenous Peoples Law *page 71*

Leadership Communication

Qualifications

Bachelor of Business *page 90*

Bachelor of Communication Studies *page 91*

Graduate Certificate

Graduate Diploma

Postgraduate Certificate

Postgraduate Diploma

Master of Management Studies *page 94*

Linguistics

Qualifications

Bachelor of Arts *page 38*

Bachelor of Social Sciences *page 42*

Graduate Certificate

Graduate Diploma

Postgraduate Diploma (Second Language Teaching)

M

Management and Sustainability

Qualifications

Graduate Diploma

Postgraduate Certificate

Postgraduate Diploma

Master of Management Studies *page 94*

Management Systems

Qualifications

Postgraduate Certificate

Postgraduate Diploma

Master of Management Studies *page 94*

Māori

Qualifications

Bachelor of Arts *page 74*

Bachelor of Social Sciences (Māori and Pacific Development) (Tikanga Māori) *page 74*

Graduate Certificate (Māori and Pacific Development)

Graduate Diploma (Māori and Pacific Development)

Postgraduate Certificate

Postgraduate Diploma

Master of Arts *page 45*

Master of Māori and Pacific Development *page 75*

Master of Social Sciences (Tikanga Māori) *page 47*

Māori and Indigenous Studies

Qualifications

Bachelor of Arts *page 74*

Bachelor of Social Sciences *page 74*

Māori and Pacific Development (See Māori)

Māori Cultural Studies**/Tikanga Māori***(See Māori)***Māori Language/Te Reo Māori***(See Māori)***Māori Media and Communication****Qualifications**Bachelor of Arts *page 74*

Graduate Certificate

Graduate Diploma

Postgraduate Certificate

Postgraduate Diploma

Master of Arts *page 45***Marketing****Qualifications**Bachelor of Business *page 90*Bachelor of Communication
Studies *page 91*Bachelor of Management Studies with
Honours *page 92*

Graduate Certificate

Graduate Diploma

Postgraduate Certificate

Postgraduate Diploma

Master of Management Studies *page 94***Materials and Process Engineering***(See Engineering)***Qualifications**Bachelor of Engineering with
Honours *page 78*Master of Engineering *page 82***Materials Science****Qualifications**Bachelor of Science *page 80*Bachelor of Science (Technology) *page 81***Mathematics****Qualifications**Bachelor of Computing and
Mathematical Sciences with
Honours *page 50*Bachelor of Science with Honours *page 80*

Graduate Certificate

Graduate Diploma

Postgraduate Certificate

Postgraduate Diploma

Master of Science *page 85*Master of Science (Research) *page 85***Mechanical Engineering***(See Engineering)***Qualifications**Bachelor of Engineering with
Honours *page 78*Master of Engineering Practice*
*(subject to approval) page 82***Media Design****Qualifications**Bachelor of Design *page 52***Molecular and Cellular Biology****Qualifications**Bachelor of Science with Honours *page 80*Bachelor of Science (Technology) *page 81***Music****Qualifications**Bachelor of Arts *page 38*Bachelor of Music *page 40*

Graduate Certificate

Graduate Diploma

Postgraduate Certificate

Postgraduate Certificate in Opera Studies

Postgraduate Diploma

Master of Arts *page 45*Master of Music *page 47*Doctor of Musical Arts *page 96***P****Pacific and Indigenous Studies****Qualifications**Bachelor of Arts *page 74*Bachelor of Social Sciences *page 74***Philosophy****Qualifications**Bachelor of Arts *page 38*Bachelor of Social Sciences *page 42*

Graduate Certificate

Graduate Diploma

Postgraduate Certificate

Postgraduate Diploma

Master of Arts *page 45*Master of Social Sciences *page 47***Physics****Qualifications**

Postgraduate Certificate

Postgraduate Diploma

Master of Science *page 85*Master of Science (Technology) *page 85*Master of Science (Research) *page 85***Political Science****Qualifications**Bachelor of Arts *page 38*Bachelor of Social Sciences *page 42*

Graduate Certificate

Graduate Diploma

Postgraduate Certificate

Postgraduate Diploma

Master of Arts *page 45*Master of Social Sciences *page 47***Population Studies****Qualifications**Bachelor of Arts *page 38*Bachelor of Social Sciences *page 42*

Graduate Certificate

Graduate Diploma

Postgraduate Certificate (Demography)

Postgraduate Diploma (Demography)

Master of Social Sciences
(Demography) *page 47***Psychology****Qualifications**Bachelor of Arts *page 38*Bachelor of Science with Honours *page 80*Bachelor of Social Sciences *page 42*

Graduate Certificate

Graduate Diploma

Postgraduate Certificate

Postgraduate Diploma

Postgraduate Diploma in the Practice
of Psychology *page 44*Master of Applied Psychology *page 44*Master of Arts *page 45*Master of Science *page 85*Master of Science (Research) *page 85*Master of Social Sciences *page 47***Public Policy****Qualifications**Bachelor of Social Sciences *page 42*

Graduate Certificate

Graduate Diploma

Postgraduate Certificate

Postgraduate Diploma

Master of Social Sciences *page 47***Public Relations****Qualifications**Bachelor of Business *page 90*Bachelor of Communication
Studies *page 91*Bachelor of Management Studies with
Honours *page 92*

Graduate Certificate

Graduate Diploma

Postgraduate Certificate

Postgraduate Diploma

Master of Management Studies *page 94*

S

Screen and Media Studies

Qualifications

Bachelor of Arts *page 38*

Bachelor of Social Sciences *page 42*

Graduate Certificate

Graduate Diploma

Postgraduate Certificate

Postgraduate Diploma

Master of Arts *page 45*

Security and Crime Science

Qualifications

Postgraduate Diploma

Master of Security and Crime

Science *page 57*

Social Policy

Qualifications

Bachelor of Arts *page 38*

Bachelor of Social Sciences *page 42*

Graduate Certificate

Graduate Diploma

Postgraduate Certificate

Postgraduate Diploma

Master of Social Sciences *page 47*

Social Work

Qualifications

Bachelor of Social Work *page 43*

Sociology

Qualifications

Bachelor of Arts *page 38*

Bachelor of Social Sciences *page 42*

Graduate Certificate

Graduate Diploma

Postgraduate Certificate

Postgraduate Diploma

Master of Social Sciences *page 47*

Software Engineering

Qualifications

Bachelor of Engineering with
Honours *page 78*

(See Engineering)

Spanish

(See International Languages and Culture)

Sport Development and Coaching

Qualifications

Bachelor of Health, Sport and Human
Performance *page 66*

Statistics

Qualifications

Bachelor of Science with Honours *page 80*

Graduate Certificate

Graduate Diploma

Postgraduate Certificate

Postgraduate Diploma

Master of Science *page 85*

Master of Science (Research) *page 85*

Strategic Management

Qualifications

Bachelor of Business *page 90*

Bachelor of Management Studies with
Honours *page 92*

Graduate Certificate

Graduate Diploma

Postgraduate Certificate

Postgraduate Diploma

Master of Management Studies *page 94*

Supply Chain Management

Qualifications

Bachelor of Business *page 90*

Bachelor of Management Studies with
Honours *page 92*

Graduate Certificate

Graduate Diploma

T

Teaching

Qualifications

Bachelor of Teaching/with
Honours *page 60*

Bachelor of Teaching

Conjoint Programme

Graduate Diploma of Teaching

Theatre Studies

Qualifications

Bachelor of Arts *page 38*

Graduate Certificate

Graduate Diploma

Postgraduate Certificate

Postgraduate Diploma

Master of Arts *page 45*

Tourism and Hospitality Management

Qualifications

Bachelor of Business *page 90*

Bachelor of Management Studies with
Honours *page 92*

Graduate Certificate

Graduate Diploma

Postgraduate Certificate

Postgraduate Diploma

Master of Management Studies *page 90*

W

Women's and Gender Studies

Qualifications

Bachelor of Social Sciences/with
Honours *page 42*

Graduate Certificate

Graduate Diploma

Postgraduate Certificate

Postgraduate Diploma

Master of Social Sciences *page 47*

Writing Studies

Qualifications

Bachelor of Arts *page 38*

Graduate Certificate




Graduate Diploma

Master of Professional Writing *page 46*

For more information on subjects
and qualifications offered by the
University of Waikato visit
waikato.ac.nz/study/subjects

Hamilton Campus Map

KEY

-  STUDENT HEALTH CENTRE
-  INFORMATION
-  MAIN PATHWAYS
Follow these paths for the most direct route between buildings
-  FOOD VENDORS
Many of the food outlets are centred around the Village Green, and you'll find a few more within walking distance
-  LOCKABLE BIKE SHEDS
See Security in BX building for access
-  PARKING
Check out the different parking zones at: waikato.ac.nz/fmd/getting-to-campus/
-  BUS STOPS
-  STUDENT ACCOMMODATION
-  ATMS
-  WAIKATO STUDENTS' UNION
-  SECURITY





THE UNIVERSITY OF
WAIKATO
Te Whare Wānanga o Waikato
NEW ZEALAND

WHERE THE WORLD IS GOING
TE AHUNGA O TE AO

The University of Waikato
Private Bag 3105
Hamilton 3240
New Zealand

Phone: +64 7 838 4610 (Outside NZ)
0800 WAIKATO (Within NZ)
Email: international@waikato.ac.nz
Website: waikato.ac.nz