



UNIVERSITÄT  
DUISBURG  
ESSEN

*Open-Minded*

# ***The University of Duisburg-Essen***

Open-Minded

## In the heart of Europe





Photo: Stadt Essen

## Duisburg

- 490.000 inhabitants
- the most important steel production site in Europe
- logistical centre of Germany, with the largest inland port in Europe
- home of the Wilhelm Lehmbruck-Museum

## Essen

- 570.000 inhabitants
- the cultural and economical centre of the Rhine-Ruhr region as well as a hotspot of the service industries
- European Capital of Culture RUHR.2010
- home of the Folkwang-Museum with its unique collection of art from the 19th and 20th centuries





## History

- August 1, 1972:  
foundation of two universities (Gesamthochschulen) in the cities Duisburg and Essen
- January 1, 2003:  
merger of the two universities and foundation of the University of Duisburg-Essen (UDE)
- March 12, 2007:  
foundation of the University Alliance Ruhr (UA Ruhr), a strategic research alliance with neighboring universities
- 2014:  
UDE is again among the 100 best of the young universities in the world (Source: THE-100 rankings under 50)

## Open-Minded

We are one of the youngest universities in Germany and have a fresh way of looking at things. We think in terms of unlimited possibilities instead of possible limitations. Located in the heart of the Ruhr metropolis, we have 11 faculties working to develop ideas with a future. We are strong on research and teaching, embrace diversity, promote academic potential and fight for genuine educational equality.



## 11 Departments

- Humanities
- Social Sciences
- Educational Sciences
- Economics
- Business Administration
- Mathematics
- Physics
- Chemistry
- Biology
- Engineering
- Medicine



## People at the University

<b>40,922</b>	students
<b>442</b>	professors
<b>2,767</b>	academic staff
<b>1,391</b>	employees technical support and administrative services (excluding Faculty of Medicine)

## Budget

<b>469 mill. €</b>	total revenue, of which
<b>120 mill. €</b>	is for the Faculty of Medicine

<b>109.4 mill. €</b>	expenditures from third-party funds, of which
<b>34.9 mill. €</b>	is for the Faculty of Medicine



# Studying & Teaching





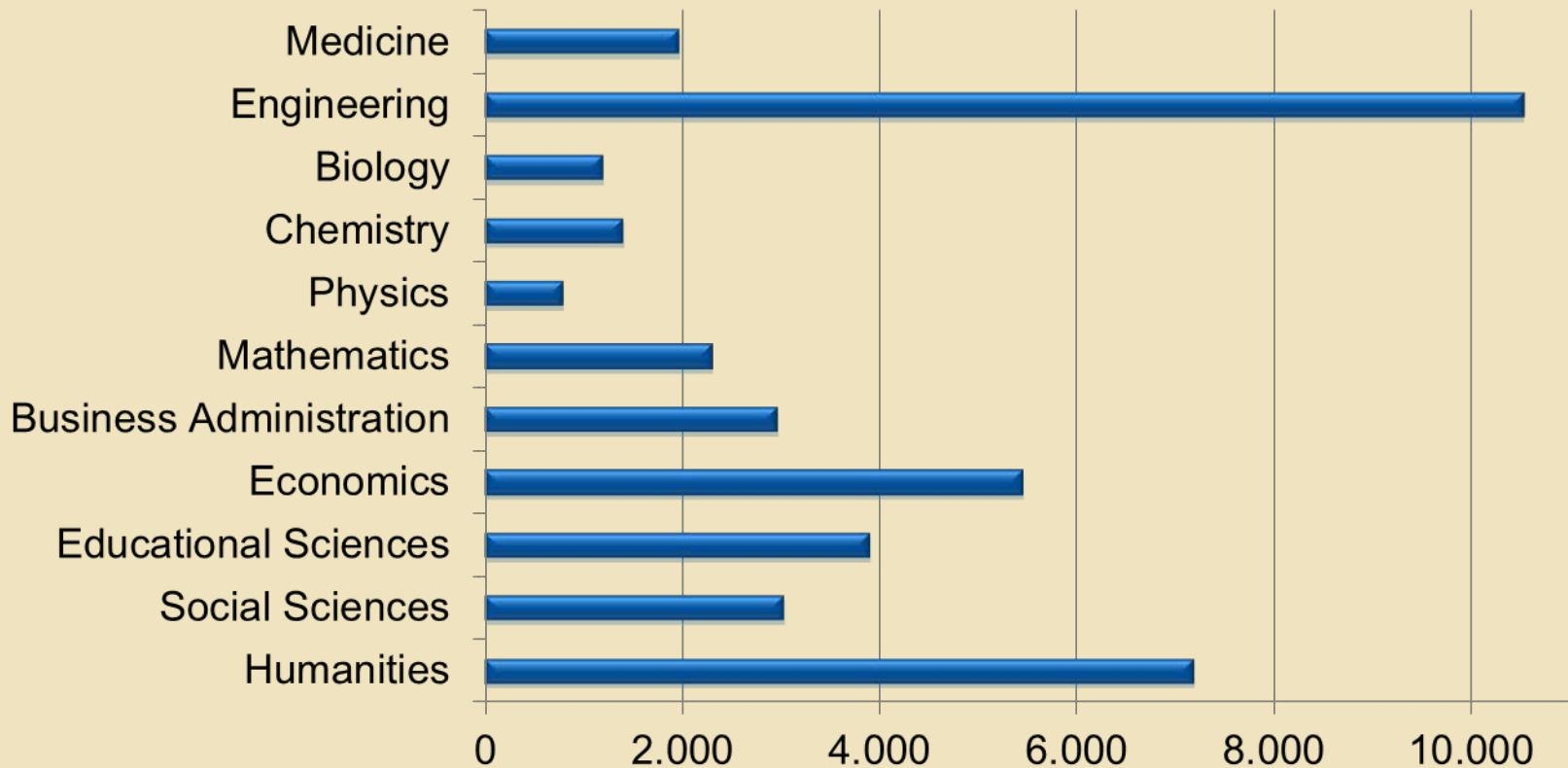
## Students

**40,922** students:  
**49 %** female students  
**18 %** international students

**11,861** first-year students:  
**49 %** female students  
**22 %** international students

**4,490** graduates:  
**54 %** female students  
**13 %** international students

## Students by Department



# Research



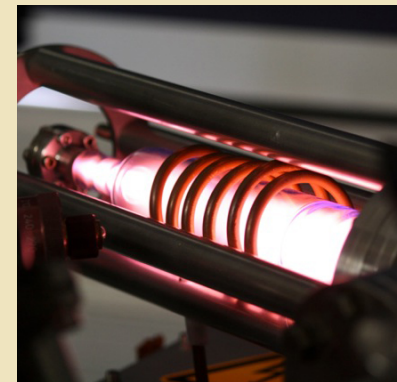
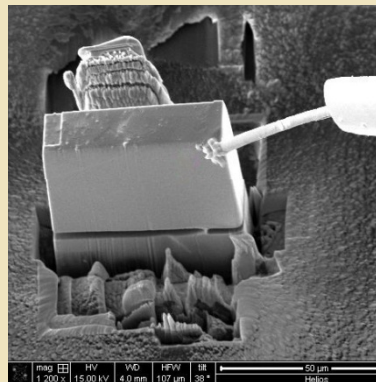
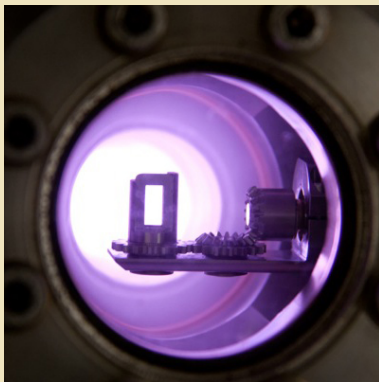
## Main Research Areas

- Nanosciences
- Biomedical Sciences
- Empirical Research in Education
- Urban Systems
- Transformation of Contemporary Societies



## Nanosciences

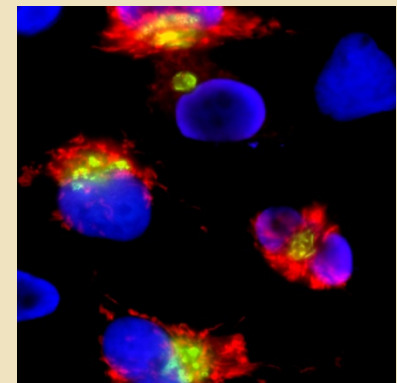
- development of nanostructured functional materials for a broad range of applications in a high-tech research center, special focus on applications in the energy sector
- more than 50 research groups comprising approx. 350 scientists from the fields of chemistry, physics, medicine and the engineering sciences are participating, among other things, in collaborative research centres, research training groups and numerous cooperative ventures with industry
- bachelor's and master's programmes in nanoengineering



Photos: CENIDE

## Biomedical Sciences

- new diagnostic methods and treatments are being developed in cooperative interdisciplinary projects
- connect the medical research at the Essen University Hospital and the Erwin L. Hahn Institute with the basic scientific research at the Centre for Medical Biotechnology (ZMB)
- the B.Sc. programme in medical biology is in especially high demand with 2,700 applicants yearly



Photos: ZMB

## Empirical Research in Education

- focus on school-related research in learning and instruction, life cycle learning and learning with digital media
- joint scientific projects with an emphasis on educational praxis coordinated by the Centre for Empirical Educational Research (ZeB)
- collaboration with national and international scientists; encouragement of the next generation of scientists



Photos: ZeB

## Urban Systems

- in rapidly urbanising (as well as in shrinking) regions, climate mitigation and adaptation, conservation of natural resources, etc. are important issues
- located in one of the largest heavily populated areas in Europe, all 11 UDE faculties are conducting research to find multi-layered solutions to the problems facing the urban world today
- the Joint Centre aims to establish a leading European centre for broad-based urban research, with international visibility, involved in the instruction and training of the next generation of scientists



Photos: ISS/UDE



## Transformation of Contemporary Societies

- patterns of order in society are modified by the displacement, disappearance and persistence of borders between people, nations, markets, etc.
- the multidisciplinary research being carried out by the six institutes at the UDE connects the fields of sociology, educational science, economic science, political science and other disciplines
- Käte Hamburger Kolleg/Centre for Global Cooperation Research



Photos: UDE

## German Research Foundation (DFG) Programmes

- **9 Collaborative research centres SFB/TR**  
(lead institution and participating university)  
in Biochemistry, Medicine, Physics and Mathematics
- **5 Research training groups**  
in Medical Biotechnology, Infectious Diseases, History, Radiobiology  
and East Asian Studies
- **10 Research units**  
(lead institution and participating university)  
in Energy Conversion, Materials Research, Medical Psychology and Educational  
Sciences
- **32 Priority programmes**  
in Mathematics, Mechanics and Medicine

## Central Research Facilities

- Center for Computational Sciences and Simulation (CCSS)
- Center for Nanointegration Duisburg-Essen (CENIDE)
- Centre for Empirical Educational Research (ZeB)
- Centre for Logistics and Traffic (ZLV)
- Centre for Medical Biotechnology (ZMB)
- Centre for Water and Environmental Research (ZWU)
- Erwin L. Hahn Institute for Magnetic Resonance Imaging (ELH)  
with the Radboud University Nijmegen
- Essen College of Gender Studies (EKfG)
- Institute of East Asian Studies (IN-EAST)
- Käte Hamburger Kolleg/Centre for Global Cooperation Research
- paluno – The Ruhr Institute for Software Technology
- Joint Research Center: KWI Institute for Advanced Study in the Humanities Essen

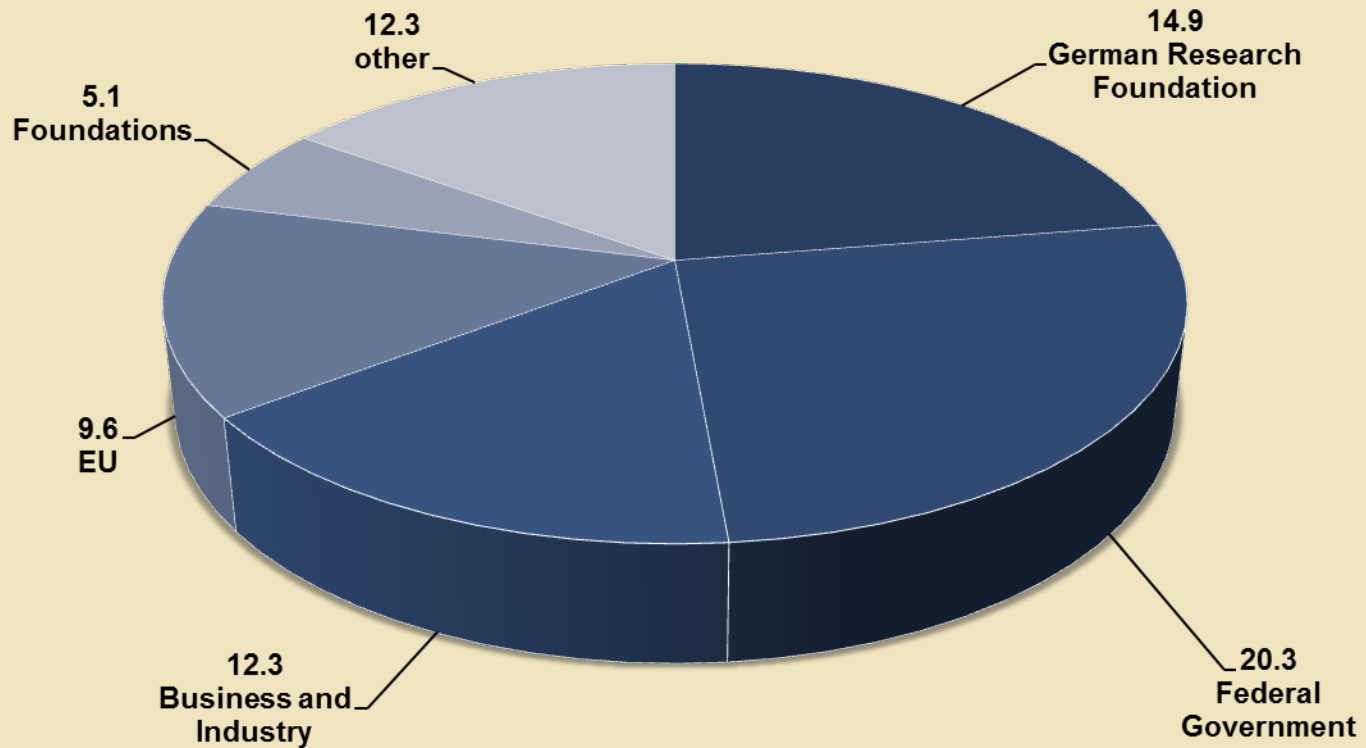
## Associated Institutes of the University

- Center for Studies on Turkey and Integration Research (ZfTI)
- Centre for Fuel Cell Technology (ZBT)
- Confucius Institute Metropolis Ruhr
- Development Centre for Ship Technology and Transport Systems (DST)
- German Textile Research Centre North-West (DTNW)
- Institute of Energy and Environmental Technology (IUTA)
- Institute of Mobile and Satellite Communication Technology (IMST)
- IWW Water Centre
- Mercator Institute for China Studies (MERICS)
- Rhine-Ruhr Institute for Social Research and Political Consulting (RISP)
- Salomon Ludwig Steinheim Institute (StI)



## Expenditures of Third-party funds (excluding Medicine)

Total sum 74.5 mill. Euro



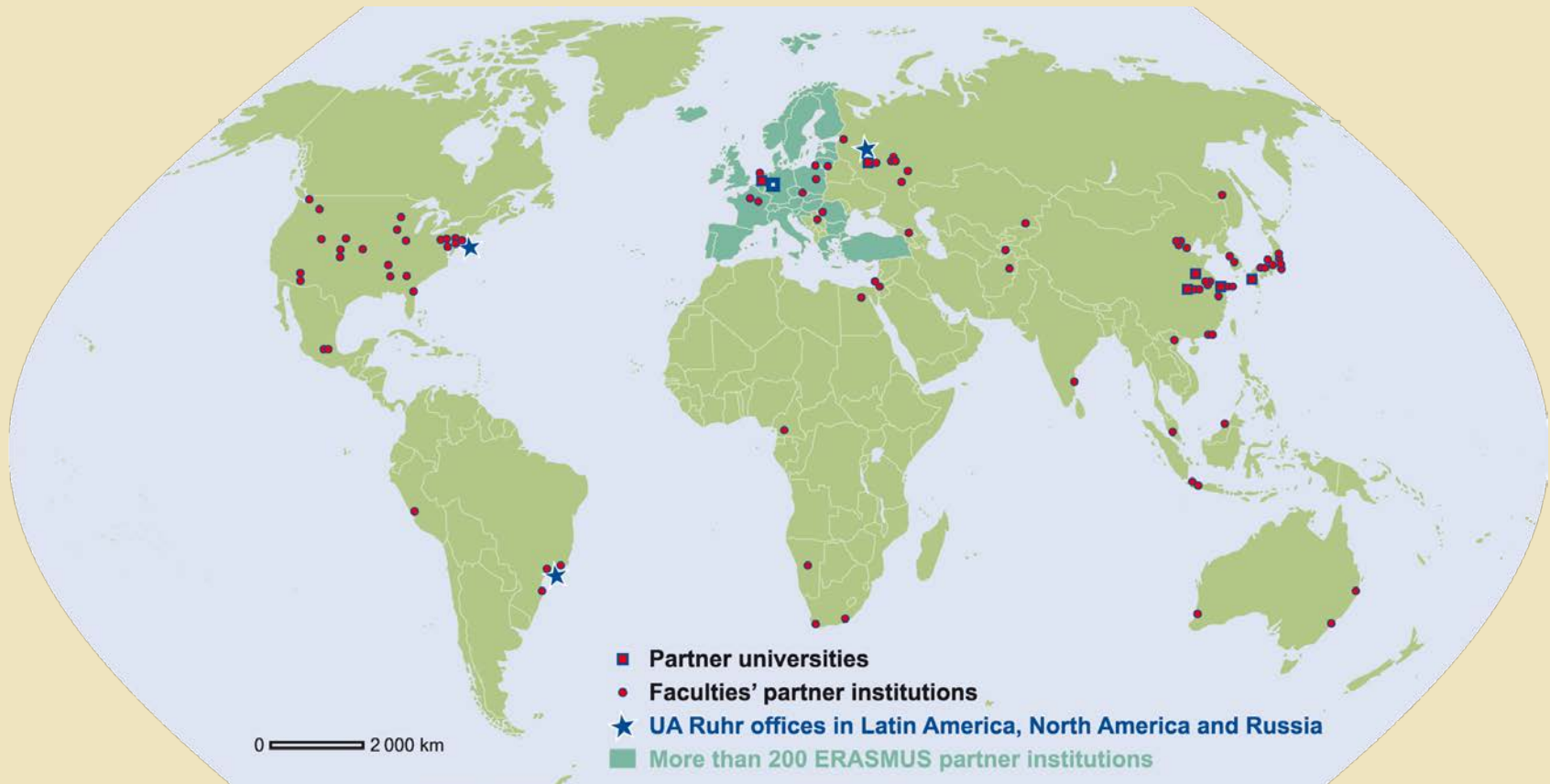
# Network

## University Alliance Ruhr (UA Ruhr)

**Unlimited possibilities:** The alliance connects the universities of Bochum, Dortmund and Duisburg-Essen. It was founded in 2007 and has today

- more than 500 study courses
- more than 100,000 students
- more than 13,000 graduates yearly
- more than 1,000 doctorates yearly
- 1,300 professors
- about 1.2 milliards Euro budget volume yearly
- about 300 millions Euro third-party funds yearly

## 108 active partnerships worldwide







## Incoming students

- 5,377** students who acquired their university entrance qualification abroad, of whom:
- 59 %** are from Asia
  - 29 %** are from Europe
  - 8 %** are from Africa
  - 3 %** are from America



## Information and Counselling

- Center for Higher Education and Quality Development (ZfH):  
more than 100 services for quality assurance, teaching, learning and career development
- Centre for Information and Media Services (ZIM):  
with 25,000 interconnected systems
- Centre for Teacher Education (ZLB):  
2,600 work placements registered per year
- Student Counselling and Academic Career Services (ABZ):  
with more than 13,000 annual contacts
- University Library (UB):  
with 2.5 million print volumes
- University Sports:  
1,400 courses per year



## Offers for everyone

- **Mercator-Professorship**  
e.g. Richard von Weizsäcker, Christiane Nüsslein-Volhard, Alice Schwarzer, Udo Di Fabio, Wolfgang Huber, Margarethe von Trotta, Götz Werner
- **Poet in Residence**  
e.g. Günter Grass, Rolf Hochhuth, Martin Walser, Cees Nooteboom, Judith Kuckart, Antje Rávic Strubel, Bernhard Jaumann, Kathrin Röggla
- **Scientist in Residence**  
e.g. Wilhelm Barthlott, Julian Nida-Rümelin, Heinz-Elmar Tenorth, Rudolf Jaenisch, John C. Campbell, Alan Ashworth, Yi Cui, Michael Batty
- **Further events**  
UniKids – lectures for children, Summer University, taster courses, student competition “freestyle-physics”