

20 21

**UNDERGRADUATE
STUDY GUIDE**

HIGH SCHOOL STUDENTS

Contents

02

Welcome to Griffith

Why choose Griffith?	04
Open more doors	07
Take your career to the next level	09
Go global	10
For parents	12
First Peoples	14
Scholarships	16
Griffith Honours College	17
VET pathways	18
Adjustment factor pathways	19

25

Our degrees

Future-focused degrees	25
Degree finder	26
Architecture, planning and built environment	28
Aviation	29
Business, tourism and commerce	30
Education	32
Engineering	33
Environment	34
Government and international relations	35
Humanities, social science, journalism and communication	36
Information technology	38
Languages	40
Law and criminology	41
Medicine, dentistry and health	42
• Physiotherapy, exercise science and sport, occupational therapy, nutrition and dietetics	42
• Medical science and technology, clinical research and health science	44
• Psychology, social work and human services	45
• Medicine, paramedicine, public health, nursing and midwifery, dentistry, pharmacy	46
Music and performing arts	48
Science	50
Sport	52
Visual arts and design	54
Double degrees	57

20

Campuses

Gold Coast	20
Nathan	20
Mt Gravatt	20
South Bank	21
Logan	21
Digital	21



Legend

Campuses

G	=	Gold Coast
L	=	Logan
M	=	Mt Gravatt
N	=	Nathan
O	=	Online
S	=	South Bank

Applications information

QTAC	=	Queensland Tertiary Admissions Centre
UAC	=	Universities Admissions Centre (NSW-based)
ATAR	=	Australian Tertiary Admission Rank
In this guide, listed ATARs are indicative only		
VET	=	Vocational Education and Training

22

Sport at Griffith

Social and competition sports	22
Griffith Sports College	24

60

Other information

How to apply	60
Important things to know about applying to study at Griffith College	62
Be supported	66
Index	68
Key dates	69

Modes of study

F	=	Full-time study
P	=	Part-time study
For example, 3F/6P = three years full-time, six years part-time		
N/A	=	not applicable
CP	=	credit points
GPA	=	Grade Point Average
All GPAs in this publication are on a seven-point grading scale		

Prerequisites

R	=	Recommended
A	=	Assumed

*Ranked in the top
2% worldwide**

*Australia's
most awarded
teachers†*

*Exceptional
student support*

*Diverse
admission
pathways*

*Flexible study
options*

*Global study
opportunities*

*Study on-campus
or online*

*Practical
industry
experience*

*50,000 students
of all ages*

* Based on the International Association of Universities – World Higher Education Database, listing more than 18,500 institutions of higher education. Current as at June 2020.

† Based on Learning and Teaching results from the Department of Education.



WELCOME TO

Griffith

Your Griffith experience starts here

In a world of opportunities, Griffith will equip you with the knowledge, skills and support you need to get where you want to be. From day one, you'll learn from some of Australia's most awarded teachers and make valuable lifelong connections.

This guide will help you decide which undergraduate degree is right for you. If you have any questions, call us on 1800 677 728, chat online at griffith.edu.au/study or speak with us at one of our events—we'll help you find the right path.

Why choose Griffith?

We're proud to deliver an outstanding education that supports our students in facing the future with confidence, competence and the knowledge and skills to thrive in a rapidly changing world.

You come first

As a Griffith student, you'll be supported in every aspect of your studies, from help with scholarships, career advice and study skills to finding employment opportunities through our Careers Recruitment team. Whether you need learning, personal or financial support, or anything else to make your time at university a more manageable and memorable experience, Griffith is here to help.

Creating a future for all

At Griffith, you'll be welcomed into an inclusive community. Knowing that students learn in a variety of ways—and that high school results aren't the only indicators of a person's aptitude—we are pleased to offer a range of admission pathways to study with us. From providing bridging courses to recognising Vocational Education and Training (VET) qualifications and beyond, we are committed to giving every student the means to succeed and realise their full potential. See page 18 for more information.

Future-ready skills and knowledge

Innovative degrees

Our future-focused degrees are designed to prepare you for new opportunities in a fast-changing world. For example, with data science rising rapidly as an area of employment, we've introduced a range of double degrees that enable you to broaden your career outcomes by combining your degree with the dynamic world of big data.

Launching in 2021, the new Bachelor of Business includes built-in partnerships with industry to meet evolving employer needs and expectations. This gives you the space and time to find your place in the future of business by taking your lessons beyond the classroom.

Showcase your capabilities

During your studies, you'll be supported to showcase your job-ready skills to employers through Griffith Credentials, our range of digital badges. Developed in response to changing employer needs, Griffith's digital badges give you a new way to highlight practical, contemporary skills gained during your degree, such as interpersonal communication, critical judgment and the ability to work as part of a team.

Global connections

Many of our degrees have an international focus, preparing you for work almost anywhere in the world. You may have the chance to enrich and diversify your learning through overseas study or by learning a new language. Such opportunities are valued highly by employers, and open doors to new perspectives, professional networks and personal experiences.

Griffith has Guaranteed Exchange agreements with partner universities around the globe, including in Asia, North America, Europe and the United Kingdom. We also offer a range of study tours and work placements to help take your learning abroad. There's a whole world out there—let us help you see it.

Be part of a worldwide community

When you're studying, you'll join a community of like-minded students. Once you graduate, your Griffith degree will be your passport to a global network of contacts. You'll join an alumni community of more than 200,000 graduates who cover every corner of the world. Across multiple fields, our graduates range from groundbreaking medical researchers to globally recognised musicians, acclaimed artists to CEOs, and marine biologists through to multimedia designers. The world opens up for you when you graduate from Griffith.

Learn from the best

As the home of four Australian University Teachers of the Year, Griffith has a proud history of driving innovation and achievement in higher education. Our teachers and researchers have won more national awards in the past five years than any other university's staff†, and our students who learn in this environment are renowned among employers for their skills, experience and work ethic.

† Based on Learning and Teaching results from the Department of Education.

Flexible study options

We've put a focus on flexibility. Depending on your degree, you'll have the choice to study in person at one of our campuses, online through our Digital campus, or using a combination of both, either part-time or full-time over two or three trimesters.

Trimesters

We teach across three 12-week trimesters each year. Depending on your degree, you can pace your study or fast-track and graduate earlier. We have degrees starting in February, July or October, so you can choose when to start your Griffith journey.

Study online

Our online study options mean you can study, learn and connect when and where it suits you. About 40% of our students study at least one subject online.

'There's so much to learn outside of the classroom and these experiences helped me build skills that made me a more employable and well-rounded person.'

Che Hooper

Doctor of Medicine

Bachelor of Biomedical Science





Open more doors

Graduate with valuable connections and the skills, expertise and hands-on experience that employers want.

Get the inside edge

At Griffith, you'll get inside access to industry, with many of our degrees offering work placements, overseas field trips and industry projects for real clients.

Our industry connections give you practical experience that helps to make sense of the knowledge you're gaining in the classroom, while also enhancing your job-ready skills.

Industry placements

Placements offer you the opportunity to learn in an industry setting, engage with professionals and ask questions to help your learning. Students have access to work placement opportunities that earn credit towards their degrees in areas ranging from business and communication to education.

More than 3,000 final-year science, engineering and IT students have completed an industry placement project as part of their studies. Most Griffith health degrees offer clinical placements, and our health students (combined) completed more than 250,000 days of clinical training in 2019.

Queensland Conservatorium students get involved with a variety of events, performing before more than 75,000 patrons each year. In 2019, they also teamed up with Opera Queensland for the showpiece of Bleach Festival on the Gold Coast.

Hands-on learning

You'll have the chance to gain experience in your chosen industry, build your portfolio and develop critical networks through our work-integrated learning (WIL) programs and key industry links. We offer a range of WIL programs such as internships, placements and work projects, which can help you earn credit towards your degree.

Depending on what you study, you may have access to facilities including:

- LiveWorm—one of Australia's longest-running visual design studios
- LiveSpace—a socially and environmentally responsible design studio
- LiveImage—a commercial photography service
- LiveLab—a film, animation and games studio

- The App Factory—a smartphone app development studio
- Griffith Health Clinics—dentistry, physiotherapy, exercise physiology, nutrition and dietetics, speech pathology and psychology clinics
- Student Investment Fund—Queensland's largest student-managed fund that gives finance students access to \$250,000 of real money to invest in socially responsible ASX-listed companies
- ADaPT—The Advanced Design Prototyping and Technologies Institute is engineering next-generation biomedical and industrial applications in collaboration with leading industry partners.

Industry-informed degrees

You'll gain strong links with industry via relevant degrees based on the latest market trends and employer demand. We listen to what industry is telling us to make sure you graduate with the skills they're after.

Griffith Business School has more than 150 adjunct professors, adjunct research fellows, industry fellows, professors emeritus and visitors (industry professionals who teach, research and advise) while more than 400 external medical and health practitioners have contributed to Griffith Health's teaching and research.

High-profile partners

Our partnerships and collaborations help to deliver you all kinds of opportunities. Through our broad network of partners, we offer unique learning experiences for students to connect with government and industry to work on research projects, provide advice and solve problems. You can find out more about our industry partners at griffith.edu.au/partnerships

Industry events

Industry events and networking functions held on campus give you the opportunity to meet professionals and potential employers. Make valuable connections before you graduate and give yourself the best chance of success. Learn about undergraduate and graduate programs and get an edge over other applicants with top tips from presenting employers. Events are listed at griffith.edu.au/careers

A male student with dark hair and safety glasses is working in a laboratory. He is wearing a light blue button-down shirt and dark trousers. He is focused on a task, holding a black cable or hose connected to a large, industrial-grade material testing machine. The machine is silver and black, with a label that reads 'MTS 810 Material Test System'. Another label on the machine says '647 Hydraulic Wedge Grip'. The background shows a typical industrial or laboratory setting with various equipment and structures.

'Griffith's state-of-the-art facilities and industry connections were able to help me gain insight and practical experience.'

In just his second year studying a Bachelor of Engineering (Honours), Melvin Feliciano secured an undergraduate position with the Queensland Government. 'At the start of my degree, I never knew I would be given the opportunities that I have had,' Melvin says. He was named the Jack Cronin Engineering Award winner for achieving the highest academic performance in first-year civil engineering. What he likes most about Griffith is the sense of community and culture at the Gold Coast campus, which he says fosters innovation. 'Griffith's state-of-the-art facilities and industry connections were able to help me gain insight and practical experience,' he says. All these experiences are helping Melvin towards his goal as an engineer. 'I aspire to make an impact on the daily lives of citizens by being a part of a team that specialises in creating and improving city infrastructure on a multitude of scales.'

Melvin Feliciano
Bachelor of Engineering (Honours)

Take your career to the next level

Gain the skills to thrive in the future.

Skills that go straight to work

Industry Mentoring Program

For over 25 years, our award-winning Industry Mentoring Program has connected Griffith students and graduates with industry professionals based in South East Queensland, interstate and internationally. Students engage with their Industry Mentors in person or online, leveraging our innovative mentoring platform to track their growth and progress. We support hundreds of mentoring relationships during Trimester 1 and 2 each year.

Through participation in the program, you will have the opportunity to broaden your professional networks and begin preparing for work and life after graduation. You'll be encouraged to seek information and guidance from your Industry Mentor, and use the insight gained from their experiences and expertise to inform decisions about your future.

Industry Mentors will help you gain a deeper understanding of your study area and give you an added edge to succeed. The program can support your career development and improve your chances of landing the perfect first job when you graduate. For more information, visit griffith.edu.au/student-mentoring

Excel through a leadership program

You may be eligible to join Griffith's Student Leadership Program. Comprising a two-day workshop and at least three leadership activities in a year, the program provides selected students with the chance to realise their full potential and engage meaningfully with the wider Griffith community. The program runs from the start of July until the end of May the following year, and participants will receive a digital badge and certificate to recognise their leadership contribution to the University.

There are many other student leadership opportunities available at Griffith, such as the Griffith Business School Student Leadership Program. For more information, visit griffith.edu.au/student-business-leadership-program

You could also join Griffith Mates, a cross-cultural leadership program that connects international and domestic students, giving you a fresh perspective on the world around you. For more information, visit griffith.edu.au/life-at-griffith/griffith-mates

Regardless of what you study, our leadership and mentoring programs are an ideal way to meet new people, develop your skills and give back to the Griffith community.

Rewarding innovation and entrepreneurship

At Griffith, there's a range of ways that you can develop the skills to bring your innovative ideas to life. We'll show you how to create opportunities, disrupt existing ways of thinking and doing, and create solutions that impact local and global problems. For more information, visit griffith.edu.au/griffith-innovate

Find the right job

Careers and Employment Service

Griffith's Careers and Employment Service can help you from your first year. Our team of accredited and qualified Career Development Practitioners are trained to assist you with all your career development needs. We can help you understand your career options, market yourself to employers, prepare for graduate job interviews, transition into graduate employment and find suitable employment while you're studying.

You'll also have access to Careerboard, our one-stop shop for advertised full-time, part-time and graduate jobs, career events and training sessions. Alternatively, you can also book an appointment with one of our career consultants. For more information, visit griffith.edu.au/careers

Your own recruitment agency

Our Careers Recruitment team provides work opportunities that fit in with your studies. As a Griffith student, you can register with our recruitment agency to access a broad range of general and degree-related vacancies. These can help you support yourself through your degree and gain valuable skills to improve your employability before and after you graduate. Griffith Careers recruits for casual, part-time, project and full-time graduate positions. For more information, visit griffith.edu.au/careers

Go global

Explore the world through your Griffith degree.

Change your outlook

Challenge yourself, impress your future employers, learn a new language, make lifelong connections, and discover the world at the same time. Through our Global Mobility program, we offer a variety of global learning experiences to diversify your degree and enhance your graduate outcomes.

As a Griffith student, you may have the chance to spend anywhere from a week to a year living and breathing a whole new global experience. Available opportunities include:

- trimester, winter and summer exchange
- global internships
- international volunteering
- overseas short courses
- academic-led study tours and field trips
- clinical placements
- research practicums
- overseas conferences and workshops.

Find out if you're eligible, how to apply, where you can go and what financial assistance is available at griffith.edu.au/go-global

Open up your learning

Look at the world in a whole new way with one of our international study tours or field trips. These programs are tailored to individual degrees. For example:

- **School of Environment and Science Rainforest Ecology and Conservation Field Trip to Borneo**—a two-week experience exploring the rainforest, working with local research assistants and seeing first-hand the incredible biodiversity of animals and plants in the tropics
- **Queensland College of Art Documentary In-field Project**—a three-week project where students blend theory and practice working collaboratively as in-field researchers documenting the social fabric of a town or region in Asia-Pacific
- **Griffith Business School Global Mobility Internship**—a three- to six-week full-time internship with an international industry partner in China, Hong Kong, Indonesia, Japan, Republic of Korea or Malaysia
- **School of Nursing and Midwifery Community Development Projects**—a three-week program where approved students complete clinical placements in Laos or Vietnam, living in rural villages and working with local health workers
- **School of Engineering and Built Environment Community Development Projects**—a range of international study tours working with local partners in Japan, Cambodia and Fiji.

Learn a language and understand the world

As a Griffith student, you'll have the option to learn a language while you're studying overseas on exchange, or study a language through the Diploma of Languages, which you can undertake alongside any bachelor degree.

You can also study a language through the Bachelor of Languages and Linguistics, Bachelor of Arts, Bachelor of Business, Bachelor of Advanced Business (Honours) or Bachelor of Government and International Relations. See page 40 for details.



‘Everything has exceeded my expectations in terms of the quality of the program and what I have gained from the degree.’

Abigail Joseph was in a Mandarin class at Peking University when she received her New Colombo Plan acceptance letter via email. She was in China as part of the Asia Future Fellows Program, an annual joint venture between Griffith University and Peking University. It was just the start of her international study experience. The Bachelor of Biomedical Science student studied in Singapore and took part in internships in India and Japan in 2019 with the New Colombo Plan. ‘You gain such a different perspective studying at a different university in a different place,’ Abigail said. ‘Through that, you can gain a more wholesome, well-rounded study experience.’ A Gold Coast local, Abigail plans to go on to study a Doctor of Medicine and chose Griffith University because of its world-class health program, and because it was situated in her hometown. ‘Everything has exceeded my expectations in terms of the quality of the program and what I have gained from the degree,’ she says.

Abigail Joseph

Bachelor of Biomedical Science

For parents

Here are the top questions parents ask about university.

What's the best way to order preferences on the application form?

Students can list up to six preferences on their QTAC or five preferences on their UAC application. They'll receive an offer for the highest preference for which they're eligible. Here's a guide on how to order preferences:

- **1st and 2nd—Desired degrees**—These are the degrees that students really want to study and have a reasonable chance of gaining entry to
- **3rd and 4th—Preferred degrees**—These are degrees that students want to study and have a good chance of gaining entry to
- **5th and 6th—Pathways**—These are degrees or diplomas that will help students upgrade to one of their desired or preferred degrees.

Nominating a degree for all six preferences using the guide above gives students the best chance of being offered a place at university.

Students applying for a double degree should also list the two component single degrees. Students may have the chance to upgrade to the double degree after a year of study.

Students applying to the Gold Coast campus can use either QTAC or UAC, but not both. Students will still receive an offer with us if they are eligible, and save on application fees.

What if they don't get the ATAR they need?

There are several pathways to help students improve their selection rank, upgrade to their preferred undergraduate degree or satisfy subject prerequisites.

Griffith has a long tradition of recognising the skills and knowledge gained through Vocational Education and Training (VET). The University partners with Griffith College, TAFE Institutes and private providers to offer admission pathways into a range of undergraduate degrees. They can also upgrade their selection rank by undertaking studies in an alternative Griffith degree.

Speak to our student advisers about the best options and refer to griffith.edu.au/pathways

What if they don't meet the prerequisites for their preferred degree?

If a student hasn't studied (or passed) the prerequisite subjects for a degree, they may be able to complete a bridging course or enabling program at Griffith University, Griffith College, TAFE or a private provider.

For more information, visit griffith.edu.au/bridging-enabling-programs

What other factors can they consider to get into university?

We offer a range of adjustment factor pathways that recognise a student's academic achievements or personal circumstances and improve their chances of getting into Griffith.

For more information, see page 19 or visit griffith.edu.au/adjustment-factor-pathways

What if they change their mind about what they want to study after they've started their degree?

If a student changes their mind about what they want to study, they may be able to apply for an internal transfer to change to a different Griffith degree.

In some cases, transfers may be approved without adding any time to a student's studies, by crediting completed subjects as electives in their new degree.

How many hours should they dedicate to study?

A standard full-time study load is four courses (subjects) for Trimesters 1 and 2, with study in Trimester 3 optional for some degrees.

For most degrees, full-time students will complete eight courses a year. Part-time study is typically two courses for Trimesters 1 and 2, or less than 75% of a standard full-time study load.

Generally, full-time students will have three hours of scheduled classes for each class, each week, which may include lectures, tutorials and laboratory work (about 10–15 hours each week). They will also be expected to commit additional time to their studies outside of class to complete course-related activities such as assignments and weekly readings.

‘Chelsea chose Griffith because it was close to home, had a good reputation and offered a wide selection of degrees.’

‘As a parent, I encouraged Chelsea to think about what she wanted to do with her life when she was still in school,’ Jason McLachlan says. ‘We talked about different career paths, income levels, where her career could take her and what would make her happy. Chelsea kept her options open by obtaining an outstanding OP, so she had many choices. She chose Griffith because it was close to home, had a good reputation and offered a wide selection of degrees,’ he said.

Chelsea McLachlan (student)
Bachelor of Design/Bachelor of Business

Jason McLachlan (father)

First Peoples

With the highest Indigenous student population of any Queensland university, Griffith is committed to championing the culture, knowledge and experiences of our Aboriginal and Torres Strait Islander communities.

Support where it counts

The GUMURRII Student Success Unit (SSU) is Griffith University's dedicated support unit for all First Peoples students. Our staff provide access to a range of supplementary services and support including assistance with recruitment, orientation and graduation.

With dedicated centres on each of Griffith's campuses, GUMURRII staff are there for undergraduate and postgraduate students throughout their university journeys, and also for online students studying through the Digital campus.

GUMURRII SSU offers safe and culturally appropriate learning environs.

Griffith is also committed to closing the gap in health outcomes between Australia's First Peoples and other Australians. That's why, in 2016, the University began implementing the First Peoples Health Unit, which complements the activities of GUMURRII, the Office of Indigenous Community Engagement, Policy and Partnerships (ICEPP), the Indigenous Research Unit, and the broader University community.

The First Peoples Health Unit's primary areas of focus are:

- Learning and teaching, to enhance First Peoples student and staff success
- Research, to further develop Griffith's ability to improve health outcomes for First Peoples communities
- Engagement, to ensure the voices that need to be heard are being considered and prioritised
- Sustainability, in keeping with key University values, and
- Internationalisation, to initiate partnerships in First Peoples Health across national lines to enrich Griffith's growing reputation for excellence, both at home and abroad.

Tutorial assistance

The Aboriginal and Torres Strait Islander Tutorial Assistance Program (ATSITAP) is a supplementary funding initiative that is offered in partnership with the Commonwealth Government and aims to improve First Peoples student retention, progression and success at Griffith University. The ATSITAP funding covers the costs of tutorial support to eligible students.

To register for ATSITAP, visit: griffith.edu.au/gumurrii-student-support-unit under Study Assistance.

Connect with culture


With a diverse, thriving and vibrant community of First Peoples students at Griffith, we generate opportunities for students to connect to country and culture all year-round. The University has a proud history of working with Elders, and developing First Peoples community engagement strategies and partnerships for community empowerment.

Griffith's in-house Council of Elders provides guidance, leadership and support to the University and our First Peoples students and staff in addressing issues of importance to First Peoples communities. The council works across the University to encourage a genuine spirit of partnership, reconciliation and respect between First Peoples and non-Indigenous people at Griffith.

In addition, our ICEPP Office—which acts as the Council of Elders' secretariat—provides further advice on Indigenous higher education, and works on initiatives that contribute to the spiritual, social, emotional, economic and educational wellbeing of Aboriginal and Torres Strait Islander people, and international First Peoples.

In pursuit of these goals, ICEPP partners with organisations from around Australia and the world, including the National Aboriginal and Torres Strait Islander Higher Education Consortium, World Indigenous Nations Higher Education Consortium (WINHEC), World Indigenous Research Alliance, Aboriginal and Torres Strait Islander Legal Service and many more.

For more information about Griffith's commitment to our First Peoples communities, visit griffith.edu.au/first-peoples



‘The staff at GUMURRII provided me with the personal and educational support I needed, as well as connecting me with a supportive network.’

Griffith's GUMURRII student support network was a 'home away from home' for Landon Brady during his studies. A Gamilaraay and Wailwan man from Coonabarabran in north-west NSW, Landon had to travel far from his family to study a Bachelor of Environmental Science. 'When moving so far away from my real home, the staff at GUMURRII provided me with the personal and educational support I needed, as well as connecting me with a supportive network,' he says. Landon says the friendships that he has found at university have been a highlight of his study, and he expected them to be useful in his career as well. 'The culture of Griffith is extremely welcoming; being a smaller university, it is relaxed, encouraging and supportive,' he says. 'I decided to study environmental science because of my passion for country and the importance of protecting it from further damage,' he says.

Landon Brady
Bachelor of Environmental Science

Scholarships

Achieve your dreams with the support of a Griffith scholarship.

Hundreds of opportunities

Our scholarships are a great way to help fund your study. Depending on what you're studying and your circumstances, you may be eligible for a scholarship that can provide direct financial support to make university more affordable.

Scholarships can cover tuition fees as well as education and living expenses, easing some of the pressure of university life and helping students successfully complete their degrees.

We offer more than 600 scholarships, and you may be surprised to find you're eligible for one or more based on your background, chosen study area, hardships you've experienced, or your achievements at school or work.

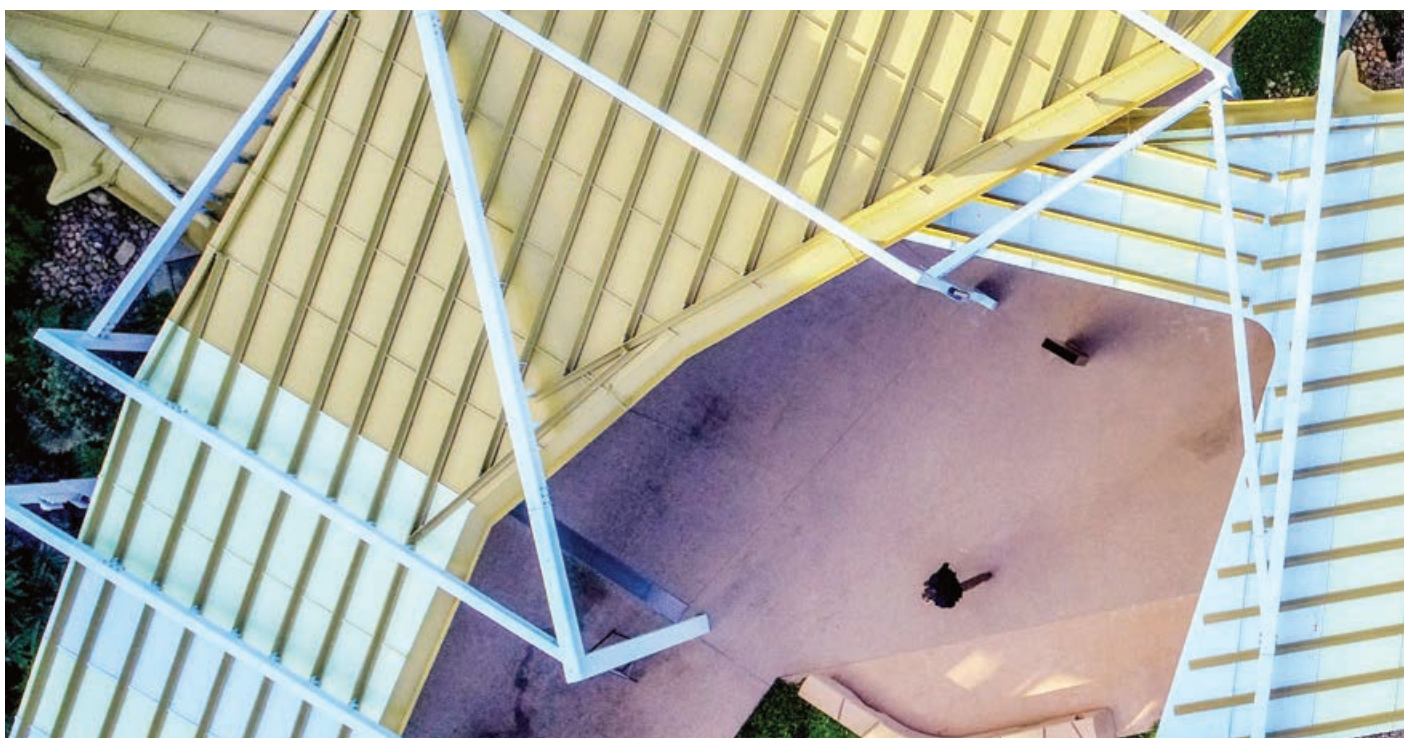
How to apply

Applying for our scholarships is free and simple. You can submit just one application to apply for multiple scholarships. Our website has a filter that will help match you to the right scholarship.

To find out how to apply, and for more details about scholarships, visit griffith.edu.au/scholarships or email scholarships@griffith.edu.au

If you are an international student studying in Australia, visit griffith.edu.au/international-scholarships or email finaid-scholarships@griffith.edu.au for scholarship information.

Make sure you check the closing dates carefully, as these vary between scholarships. Most scholarships are open mid-July 2020 for study in 2021.



Griffith Honours College

If you're a high-achieving student and keen to enhance your university experience through extracurricular activities, the Griffith Honours College can help you reach your full potential.

The Griffith Honours College experience will provide you with skills and opportunities that help you stand out from the crowd when you graduate.

You'll have opportunities to enrich your university study with mentoring, international experiences, leadership roles, volunteering, research opportunities and community engagement activities.

What are the benefits?

As a Griffith Honours College student, you will:

- take part in regular one-on-one sessions with a mentor who'll guide you through university and help you achieve your professional goals
- be supported to gain a global perspective through studying, participating in travel abroad programs or working overseas
- be provided with opportunities to lead and support local, national and international community and volunteering initiatives
- be recognised as a high-achieving student in the Griffith community.

Are you eligible?

Applications to the Griffith Honours College are open to students continuing straight from high school and mature students who are undertaking their first undergraduate degree. International students meeting the eligibility criteria can also apply.

To be eligible, you must have Griffith University as a preference on your QTAC or UAC application and have an Australian Tertiary Admission Rank (ATAR) above 95.00 (including International Baccalaureate (IB) and interstate equivalent ATAR). Applicants expecting an ATAR above 88.00 (including IB and interstate equivalent ATAR) with exceptional personal achievements may be considered.

How to apply

To apply to the Griffith Honours College, you need to complete the combined Deans' Sir Samuel Griffith Scholarship/Sir Samuel Griffith Scholarship application. Successful applicants for the Deans' Sir Samuel Griffith and Sir Samuel Griffith scholarships are automatically given membership of the Griffith Honours College. Other applicants will be evaluated on the basis of their academic achievements and commitment to service.

Applications open mid-July 2020 for study in 2021. You can apply online at griffith.edu.au/griffith-honours-college or email honourscollege@griffith.edu.au for more information.



VET pathways

Griffith recognises vocational education and training (VET) as a highly effective pathway to our university.

We accept standalone VET qualifications completed at high school. Depending on your study choices, you may be eligible for guaranteed admission into one of a range of our undergraduate degrees. For more information, see page 63, or visit griffith.edu.au/guaranteed-admission

We also encourage high school students to achieve an ATAR.

Certificates III and IV

If you complete an Australian Qualifications Framework (AQF) Certificate III or IV while at high school, you can apply through QTAC to study a range of our degrees.

With the exception of the Certificate IV in Adult Tertiary Preparation, a Certificate III or IV does not meet the English subject prerequisite.

For admission in 2021, you can satisfy the English prerequisite by achieving a C grade in Units 3 & 4 in a General English subject in years 11 and 12. If you completed Year 12 interstate, your previous study may also meet the English prerequisite.

If you did not undertake Year 12, you may wish to complete a bridging or enabling program in order to meet the English prerequisite. More information is available at griffith.edu.au/pathways

Diplomas and Advanced Diplomas

If you complete an AQF Diploma or Advanced Diploma while at high school, you too can apply through QTAC for a number of undergraduate degrees at Griffith. AQF Diplomas and Advanced Diplomas both meet the English subject prerequisite for admission.

For more information, visit griffith.edu.au/pathways

When you are accepted into Griffith, you may apply for credit transfer, which may reduce the time it will take to complete your degree. Find out more at griffith.edu.au/credit

Eligible degrees

If you have completed a Certificate III, IV or a Diploma, and meet the English prerequisite, you may be eligible for a place in one of our degrees. These degrees are identified in the degrees section in this guide, starting on page 28. For specific VET pathway information, see the Griffith Degree Finder at griffith.edu.au/degrees

Further information about prerequisite subjects and bridging courses is available at griffith.edu.au/prerequisites-assumed-knowledge

Adjustment factor pathways

Your academic achievements or personal circumstances can help you get into your preferred degree.

Our adjustment factor pathways, including the Gold Coast and Logan Priority Access Pathway, Educational Access Scheme (EAS), Elite Athlete Adjustment Factors, Year 12 Subject Adjustment Pathway and Guaranteed Admission Scheme, can improve your chances of getting into your preferred degree.

You don't need to apply for adjustments; they will be automatically applied to your QTAC or UAC application if you qualify for a particular scheme.

The maximum adjustments that you can receive under all pathways is capped at eight (8). Subject prerequisites and other requirements still apply. Some degrees are not eligible for adjustments.

More information about eligibility and other requirements for the following pathways is available at griffith.edu.au/adjustment-factor-pathways

Gold Coast and Logan Priority Access Pathway

If you live in one of our eligible suburbs from the Brisbane City region to Nambucca Shire, NSW, and have never studied at university before, you may be eligible for Priority Access.

If you reside in one of the listed locations, you will be awarded two (2) adjustments to your eligible Gold Coast and/or Logan campus preferences.

Note. Excluded from this scheme are the bachelors of Medical Science and Dental Health Science, and all distance and online degrees.

Elite Athlete Adjustment Factors

Our Elite Athlete Adjustment Factors acknowledge the value of integrating sporting and academic aspirations.

As a recognised Elite Athlete Friendly university, we may consider the impact of your sporting commitments on your last two years of education and you may receive adjustments to eligible QTAC preferences.

Note. Excluded from this scheme are the bachelors of Contemporary Australian Indigenous Art, Dental Health Science, Dental Hygiene, Dental Technology, Dental Prosthetics, Medical Science, Midwifery, Nursing (Advanced Standing), Occupational Therapy, Paramedicine, and Physiotherapy, double degrees in Dental Technology/ Dental Prosthetics, Nursing/Graduate Certificate in Paediatric Nursing, and Nursing/ Graduate Certificate in Paediatric Nursing (Advanced Standing), and all Queensland Conservatorium degrees.

Year 12 Subject Adjustment Pathway

If you have successfully studied a subject in high school that requires a high level of skill or knowledge, you may be able to receive up to six (6) adjustments under this pathway.

Available to current Year 12 students completing the following subjects (or their interstate equivalent):

- Accounting
- Aerospace Systems
- Ancient History
- Biology
- Business
- Chemistry
- Economics
- Engineering
- Film, Television and New Media
- Geography
- Health
- Languages other than English (LOTE)
- Legal Studies
- Marine Science
- Modern History
- Physics
- Specialist Mathematics
- Griffith University Early Start to Tertiary Studies (GUESTS) course*

Note. Excluded from this scheme are the bachelors of Medical Science and Dental Health Science.

* Griffith runs a number of GUESTS courses, including Griffith Biology, Griffith Eng, Griffith Health and Griffith Chemistry, at school, on-campus and online. Adjustment factors are also awarded for recognised GUESTS equivalents completed at other tertiary institutions, such as QUT-START or UQ's Enhanced Studies Program.

Campuses

Each of our campuses has specialised areas of expertise and a wide range of facilities.



Gold Coast

Our largest campus, which offers a range of state-of-the-art facilities as well as teaching and research in almost all study areas.

Students: 18,000 +

Study areas: Degrees span almost all study areas, with strengths in health

Centrally located in Southport and just minutes from world-famous beaches, the campus offers a dynamic and exciting student lifestyle, supported by the GUGC Student Guild. Play beach volleyball, indoor soccer, basketball and tennis, and make use of the aquatic centre and athletics track. For more information, visit gugcstudentguild.com.au

The Griffith Health Centre operates in proximity to the Gold Coast University Hospital, and is the most comprehensive educational health facility in Australia. The centre offers health services to students, staff, and the local community. In addition, our science precinct is home to the Institute for Glycomics, the only research facility of its kind in Australia.

Other campus amenities include a variety of cafes, a post office, bookshop, newsagency, indoor and outdoor study spaces, a Microsoft Tech Lounge and 24/7 study hall.



Nathan

Situated in tranquil, native koala habitat on the edge of Toohey Forest, about 12 kilometres from the Brisbane CBD.

Students: 13,000 +

Study areas: Aviation, business, communication and journalism, engineering, environment, government, humanities, information technology, languages, law, nursing, occupational therapy, physiotherapy, science

With easy access to public transport, childcare and parking facilities, our foundation campus is home to world-class expertise in the environment, sustainability, Asian studies and biosciences.

Our newly completed Engineering, Technology and Aviation building (N79) enables flexible best-practice teaching in state-of-the-art learning spaces. The campus also has a range of cafes and social, lifestyle and sporting facilities, student clubs and societies.

Our six-star, green-rated Sir Samuel Griffith Centre was Australia's first teaching and research building driven by a combination of solar power and hydrogen energy.



Mt Gravatt

Mt Gravatt is adjacent to Nathan, with panoramic views of Brisbane.

Students: 4,000 +

Study areas: Criminal justice, criminology, education, psychology

With a history of progressive thinking and learning, Mt Gravatt is a base for teaching and research into criminology, education and psychology.

Like the nearby Nathan campus, it's situated on the edge of Toohey Forest, and features a world-class health and fitness hub comprising a heated pool, indoor and outdoor recreation areas, fitness centre, 16-court tennis centre, a training oval, and basketball and netball courts.

The campus is centrally located, being about 11km from the Brisbane CBD and about 6km from Garden City shopping centre, and boasts the exceptional convenience of being a part of the Griffith University Busway, linking both Mt Gravatt and Nathan to the greater Brisbane bus network.



South Bank

Embedded within Brisbane's cultural heart and the picturesque South Bank Parklands, this campus is our creative and performing arts hub.

Students: 3,500 +

Study areas: Acting, animation, contemporary Australian Indigenous art, design, film, fine art, games design, media, music, musical theatre, photography

As the home of the Queensland College of Art, Griffith Film School and Queensland Conservatorium, South Bank campus is renowned as a centre for excellence in the creative and performing arts in Queensland.

Also comprising the Griffith Graduate Centre, South Bank campus is a short walk from the Queensland Art Gallery, Gallery of Modern Art, State Library, Queensland Museum, Queensland Performing Arts Centre and the Brisbane Convention and Exhibition Centre, and just across the river from the Brisbane CBD.



Logan

Situated between Brisbane and the Gold Coast in one of Australia's fastest-growing cities.

Students: 2,500 +

Study areas: Business, commerce, education, human services, midwifery, nursing, social work

This community-focused campus is recognised as a national showcase of social inclusion in higher education through innovative partnerships, industry engagement and degree pathways. It is a leader in flexible learning options and has strong connections with the local community, hosting numerous sporting and cultural events.

Socially minded students will feel right at home in these serene surroundings, with campus study offerings focusing strongly on community health, education and business.



Digital

Griffith's Digital campus is a virtual community that allows you to study, learn, and connect anywhere, anytime.

A leader in online education

Griffith's Digital campus is our third-largest and fastest-growing campus, with 40% of all Griffith students studying at least one subject online.

Studying online gives you the flexibility to fit study into your life. Our online courses, combined with our different study modes, give you the freedom to mix and match to suit your changing needs. You can fast-track your studies to finish your degree sooner, or pause when life gets in the way.

- Study when and where you want.
- Graduate with the same degree you would receive if you completed it by studying face-to-face.
- Access expert knowledge from award-winning academics.
- Connect and build your professional networks, virtually.
- Combine your study with face-to-face experiences.
- Participate in rich learning through live online tutorials, which allow you to connect with fellow students to discuss lessons, ideas and burning questions.

Need a place to live?

Whether you want to live on or off campus, solo or with friends, we can help you find the right place to call home. With options available through a range of preferred accommodation partners across Brisbane, Logan and the Gold Coast, we'll support you in finding a comfortable, convenient living space while you study. For more information, see page 67 or visit griffith.edu.au/accommodation

Social and competition sports

As a Griffith student, you can gain access to all sporting facilities across our campuses.

Sporting clubs and events

Social sport

Weekly competitions for a whole range of sports are hosted throughout the year. Available competitions will vary from campus to campus.

Depending on your sport of choice, you can register as a full team or, if you are joining on your own, you can sign up as an individual and we'll put you in a team.

Seasons run for about 10 weeks (including finals) and there are multiple seasons throughout the year, with special discounts on registration available for Griffith students. For more information, visit griffith.edu.au/social-sport

Clubs

Griffith sport clubs are a great way to participate in regular sporting competition, and make new friends. We have a wide range of sport clubs that enter teams in social and external competitions, sport tournaments and social events.

If we don't have the sport club you are looking for, we can help you start a new one. All sport club committees are provided with training, guidance and support throughout the year. Volunteering on a committee is extremely beneficial, as it builds leadership and teamwork skills, and increases employability. For more information, visit griffith.edu.au/sport-clubs

Represent Griffith

We select individuals and teams to represent Griffith in a variety of sports to compete at national university level. They are a great opportunity to represent your university and meet people from all over the country. Individuals and teams contend for the championship titles in their chosen sport. We also offer other inter-tertiary events throughout the year, including the Intervarsity Sport Bowl, where you can compete against universities across Queensland and northern NSW.

For further information about how you can represent Griffith, visit griffith.edu.au/represent-griffith-sport

Events

We run sporting events for students and non-students on all campuses throughout the year, such as swimathons, fun runs and more. Some key events include the Nathan Dash, a 660m sprint through the heart of the Nathan campus, and the Toohey Trail Run, a 5km, 10km or half-marathon trail run from the Nathan campus through Toohey Forest.

If competing isn't your thing, you can always volunteer in our Griffith Sport Event Leaders program and help us deliver these great events on campus. For more information, visit griffith.edu.au/sport-events



Sporting facilities

Nathan

The Nathan Fitness Centre is open to Griffith students, staff and the local community. It is fully equipped with pin-loaded, plate-loaded, free weights and the latest cardiovascular exercise machines.

The campus also features three glass-back squash courts and a dedicated multisport complex, with four all-weather synthetic grass fields and two floodlit cricket nets. Bookings are available through the Nathan Fitness Centre.

There is also a wide variety of group fitness classes available, including the Les Mills Program as well as Zumba, yoga and Pilates. For more information, visit griffith.edu.au/nathan-fitness

Mt Gravatt

The 25 m heated pool at the Mt Gravatt campus offers a variety of swimming and fitness training options, including swim squads and learn-to-swim classes for both children and adults. In addition to the pool, there is a fully equipped gym and a range of group fitness classes, including aqua aerobics. For more information, visit griffith.edu.au/aquatic-and-fitness-centre

The campus is also home to a world-class 16-court tennis centre. Offering a vibrant and welcoming environment supported by professional, experienced staff, the facility has a fully equipped pro shop and café. For more information, visit griffith.edu.au/tennis

Logan

The dedicated Workout Room at Logan campus is equipped with treadmills, cross trainers, bikes and pin-loaded resistance equipment providing a convenient way to stay active while on campus. For more information, visit griffith.edu.au/logan-workout-room

Gold Coast

The Uni Fitness Health Centre includes cardio and pin-loaded fitness machines and free weights. The group fitness space offers classes such as BodyPump, BodyCombat, BodyBalance, yoga, HIIT and boxing. For more information, visit gugcstudentguild.com.au

Also located at the Gold Coast, the Griffith Athletics Track is a national-standard facility available for event and individual bookings. The track was an official athlete training venue for the Gold Coast 2018 Commonwealth Games. For more information, visit griffith.edu.au/athletics-track

For those more at home in the water, the Gold Coast Aquatic Centre has a 50 m heated pool and a fitness studio for all your swimming and fitness training needs. For more information, visit griffith.edu.au/gold-coast-aquatic-centre

For an overview of all the sport and fitness options available to Griffith students, visit griffith.edu.au/play-sport

Choose sport as your study area

Find out about the different ways you can study sport at Griffith on page 52.



Griffith Sports College

Access support to balance the high demands of elite sport with your university studies.

Griffith has one of the highest numbers of elite athlete students in the country. Through the Griffith Sports College (GSC), we provide dedicated assistance for more than 550 student athletes, helping them successfully balance the high demands of elite sport and university life. Our distinguished alumni include 55 Olympians, 10 Paralympians and more than 30 Commonwealth Games athletes.

High performance the whole way

The GSC offers you many benefits. These include:

- consideration for program admission flexibility
- direct admission
- personalised degree advice and course planning
- timetabling assistance to allow for sporting commitments
- class attendance flexibility
- the opportunity to study with other institutions
- assessment and exam benefits, such as extensions, deferred exams or alternative arrangements
- support with special consideration requests
- flexibility to study interstate, with online options
- funding for specific sporting events
- access and special rates for physiotherapy and sports science services
- tutoring assistance (subject to availability).

Support from the very best

The GSC has a wealth of sporting and academic knowledge within its team, which includes Olympic gold medalists Duncan Free OAM (GSC Director) and Naomi McCarthy (nee Castle) OAM (GSC Manager). Both Duncan and Naomi are Griffith alumni and understand the demands elite athletes face, trying to juggle training, competition and study. You'll have access to valuable mentoring and direct athlete support.

Are you eligible?

If you compete at state, national or international level in your sport, you may be eligible to join the GSC.

Elite athletes (including coaches) are identified as participating in an Australian Institute of Sport (AIS) and Griffith University-recognised sport. We base eligibility on advice from state and national sporting organisations, professional sporting clubs and/or recognised player associations.

As part of the AIS Elite Athlete Friendly University network, we work one-on-one with students and directly with teaching staff to provide a supportive environment for athletes.

How to apply

You can download a GSC application form at griffith.edu.au/griffith-sports-college

As an elite swimmer, Zac Stubblety-Cook subscribes to the motto that he is a person first, athlete second. In Zac's case, studying a Bachelor of Psychological Science and Bachelor of Business at Griffith offers him the balance he requires. Long hours in the pool and regular travel for training and competition complicate Zac's university experience, but the record-setting Pan Pacific Games silver medallist receives extra support and advice so that he can achieve his goals—including his ultimate dream of winning Olympic gold. 'Griffith has really helped me fit my study in with my swimming commitments,' he says.

Zac Stubblety-Cook

Elite swimmer
Bachelor of Psychological Science/
Bachelor of Business



Future-focused degrees

At Griffith, you'll learn in and out of the classroom, with teaching methods tailored to suit the needs of each degree.

Your degree will have compulsory courses (subjects) and you may also choose electives to help shape your major.

Depending on your degree, you'll attend a combination of lectures, tutorials, workshops or laboratory classes. Here's an example of how a full-time Griffith degree may be structured.

Foundation

1st year

Your first year of study is foundational. You'll explore the core skills and concepts related to your chosen study area. It's also a great time to get to know the students you'll be studying alongside for most of your degree. You'll learn in a collaborative atmosphere with students of all ages and backgrounds, making it a rich learning environment.

Specialisation

2nd year

From your second year, you'll focus on your chosen specialisation, which is referred to as a major at Griffith. You'll also get the chance to put what you learn in lectures and tutorials into practice. Depending on your degree, you may learn through work placements, overseas field trips, industry projects for real clients, or laboratory studies.

Capstone

Final (3rd or 4th) year

In your final year, you'll continue to advance your knowledge and skills, and undertake a capstone course that consolidates your learning and prepares you to transition into the workplace. Some degrees include a fourth year of study, in which you may conduct research. You'll work closely with a supervisor on a research project related to your specialisation.



Degree finder

We offer a wide range of degree options, leading to hundreds of possible careers.

Here's a small sample to get you inspired! For more information, visit griffith.edu.au/degrees

26

	Your interests	Bachelor degree	Your career plans	
Architecture, planning and built environment	Design Geography Engineering Maths Physics Graphics IT Business studies	<ul style="list-style-type: none"> Architectural Design Urban and Environmental Planning Construction Management 	City planner, architect, interior designer, engineer, construction manager, property developer, real estate agent	page 28
Aviation	Maths Biology Physics Business studies	<ul style="list-style-type: none"> Aviation (pilot training) Aviation Management 	Charter pilot, flight instructor, airline manager, air traffic controller, airline captain, Air Force first officer, airline staff trainer	page 29
Business, tourism and commerce	Accounting Business studies Economics Maths Social studies Technology studies Language Hospitality Tourism	<ul style="list-style-type: none"> Business Advanced Business (Honours) Business Innovation Applied Financial Advice International Tourism and Hotel Management 	Business manager or owner, accountant, economist, entrepreneur, financial advisor, marketing specialist, advertising executive, real estate developer, human resources manager, logistics and supply chain manager, event organiser, sport club director, tourism operator, hotel chain manager	page 30
Education	All subjects!	<ul style="list-style-type: none"> Education (specialising in primary education) Education (specialising in secondary education) 	Primary or secondary school teacher, early childhood education teacher, special needs teacher, physical education teacher, sport coach	page 32
Engineering	Engineering Maths Physics Design and technology IT Business studies	<ul style="list-style-type: none"> Engineering (Honours) Engineering Technology in Electronic and Computer Engineering 	Civil engineer, electrical engineer, biomedical engineer, environmental engineer, mechanical engineer, software engineer, industrial designer, construction manager	page 33
Environment	Ecology and conservation Geography Chemistry Science	<ul style="list-style-type: none"> Environmental Science Marine Science Science Science Advanced (Honours) Urban and Environmental Planning 	Conservation ecologist, environmental officer, environmental consultant, environmental health project officer, environmental scientist, environmental chemist, wildlife biologist, marine biologist, environmental consultant, oceanographer, marine park officer, pollution control officer, fisheries and aquaculture consultant, marine tourism officer	page 34
Government and international relations	Social and community studies English History Religion and ethics	<ul style="list-style-type: none"> Government and International Relations 	Policymaker or advisor, export manager, diplomat, politician, international business analyst, security advisor, consultant, translator, interpreter, journalist, language teacher, company manager, international educator	page 35
Humanities, social science, journalism and communication	Indigenous Studies History Business Communication Media studies Geography Study of society, religion and ethics	<ul style="list-style-type: none"> Creative Industries Communication and Journalism Social Science Arts 	Writer, journalist, editor, communications manager, marketing executive, public relations consultant, policymaker, author, researcher, security analyst, museum curator, public educator, non-governmental organisation agent, community leader, screen critic, book reviewer, poet, novelist, biographer, arts facilitator, creative entrepreneur, cultural development worker	page 36
Information technology	Maths IT Design and technology Graphics Business studies Engineering	<ul style="list-style-type: none"> Applied Information Technology Information Technology Computer Science Intelligent Digital Technologies 	Software developer, IT support officer, database and systems administrator, technical writer, web developer, IT sales representative, business analyst, app developer, mobile technology manager, online content specialist	page 38

	Your interests	Bachelor degree	Your career plans	
Languages	English Business studies Language Communication Hospitality Tourism	<ul style="list-style-type: none"> Arts Languages and Linguistics Business Advanced Business (Honours) Government and International Relations 	Translator, interpreter, language teacher, international educator, publisher, writer, journalist, biographer, researcher	page 40
Law and criminology	Legal studies Study of society English Business studies	<ul style="list-style-type: none"> Laws (Honours) Criminology and Criminal Justice 	Barrister, solicitor, corrective services or welfare support officer, human rights defender, politician, fraud expert, security or intelligence consultant, policy officer	page 41
Medicine, dentistry and health	Sciences Study of society Health and physical education	<ul style="list-style-type: none"> Clinical Exercise Physiology Exercise Science Nutrition and Dietetics Occupational Therapy Physiotherapy Sport Development 	Physiotherapist, exercise physiologist, strength and conditioning coach, dietitian, occupational therapist, speech pathologist, health educator, sport facilities manager	page 42
	Sciences IT Engineering	<ul style="list-style-type: none"> Biomedical Science Medical Laboratory Science Health Science 	Medical laboratory scientist, clinical trials, pharmacy technician, environmental scientist, formulation chemist, biomedical engineer, environmental health officer	page 44
	Study of society English Biology Chemistry	<ul style="list-style-type: none"> Counselling Child, Youth and Family Practice Human Services Psychological Science Psychology Social Work Social Science 	Psychologist, counsellor, social worker, welfare support officer	page 45
	Sciences Study of society English Maths Health and physical education	<ul style="list-style-type: none"> Dental Health Science Dental Prosthetics Dental Technology Dental Hygiene Medical Science Midwifery Nursing Pharmacy Pharmacology and Toxicology Paramedicine Public Health Biomedical Science 	Doctor, surgeon, dentist, dental hygienist, nurse, midwife, pharmacist, paramedic, medical scientist, regulatory scientist, clinical trials monitor, health policy and program developer, environmental or public health officer	page 46
Music and performing arts	Acting Music Musical theatre	<ul style="list-style-type: none"> Acting Music Musical Theatre 	Actor, performer, vocalist, instrumentalist, musician, concert performer, stage performer, music producer, sound engineer, composer, music promoter, event organiser	page 48
Science	Sciences Maths Engineering IT Technology studies	<ul style="list-style-type: none"> Forensic Science Science Science Advanced (Honours) Environmental Science Marine Science Computer Science 	Microbiologist, pharmaceutical scientist, biochemist, chemist, biotechnologist, physicist, DNA expert, forensic molecular biologist, forensic chemist, forensic toxicologist, science journalist, science teacher	page 50
Sport	Health Physical education	<ul style="list-style-type: none"> Clinical Exercise Physiology Exercise Science Physiotherapy Psychology (Honours) Sport Development Business International Tourism and Hotel Management 	Strength and conditioning coach, health and physical education teacher, exercise scientist, physiotherapist, team manager, exercise physiologist	page 52
Visual arts and design	Art English Film and TV Media studies Graphics Music Design and technology	<ul style="list-style-type: none"> Animation Fine Art Contemporary Australian Indigenous Art Photography Design Creative and Interactive Media Film and Screen Media Production Games Design Industrial Design 	Visual artist, gallery manager or curator, photographer, photojournalist, copywriter, scriptwriter, author, artist, producer, director, editor, cinematographer, sound designer, filmmaker, graphic designer, product designer, stage manager, games designer, animator, art director, festival director, fashion designer	page 54

Architecture, planning and built environment

Help shape the future of local and global communities and cities as you plan and build sustainable solutions for practical issues.

Developed alongside Griffith's industry advisory board, these degrees ensure you are equipped with work-ready attributes and abilities to excel from the earliest stages of your career.

CAREER OUTCOMES

City planner
Architect
Engineer
Construction manager
Interior designer
Property developer
Real estate agent

STUDY AREA / MAJOR	DEGREE	CAMPUS	START TRIMESTER	DURATION	PREREQUISITES		2020	
					QATC	UAC	ATAR	VET PATHWAYS
Architecture	Bachelor of Architectural Design*	G	1, 2	3F/6P	General English (Units 3&4, C) R: General Mathematics or Mathematical Methods (Units 3&4, C)	Any two units of English (Band 2) R: Mathematics General 2 or Mathematics	69.35	✓
Urban planning	Bachelor of Urban and Environmental Planning	G, N	1, 2	4F/8P	General English (Units 3&4, C) R: General Mathematics or Mathematical Methods (Units 3&4, C)	Any two units of English (Band 2) R: Mathematics General 2 or Mathematics	63.15	✓
Urban environments	Bachelor of Environmental Science	G, N	1, 2, 3	3F/6P	General English (Units 3&4, C) A: General Mathematics or Mathematical Methods (Units 3&4, C) R: one of Biology, Chemistry or Physics (Units 3&4, C)	Any two units of English (Band 2) A: Mathematics General 2 or Mathematics R: one of Biology, Chemistry or Physics	63.15	✓
Civil engineering	Bachelor of Engineering (Honours)	G	1, 2	4F/8P	General English (Units 3&4, C), Mathematical Methods (Units 3&4, C) R: one of Chemistry, Specialist Mathematics or Physics (Units 3&4, C)	Any two units of English (Band 2) plus Mathematics R: one of Chemistry, Physics or HSC Mathematics Extension 1 or 2	73.30	✓
Environmental engineering®		N	1, 2	4F/8P		N/A	69.35	
Construction	Bachelor of Construction Management (Honours)	G	1, 2	4F/8P	General English (Units 3&4, C), General Mathematics or Mathematical Methods (Units 3&4, C)	Any two units of English (Band 2) plus Mathematics General 2 or Mathematics	69.35	✓
Industrial design	Bachelor of Industrial Design	G	1, 2	3F/6P	General English (Units 3&4, C)	Any two units of English (Band 2) A: Mathematics General 2 or Mathematics	69.35	✓
Interior design and environments	Bachelor of Design	G, S	1, 2, 3	3F/6P	General English (Units 3&4, C)	Any two units of English (Band 2)	63.15	✓
Real estate and property development	Bachelor of Business	G, N	1, 2, 3	3F/6P	General English (Units 3&4, C)	Any two units of English (Band 2)	NEW IN 2021	
Real estate and property development	Bachelor of International Tourism and Hotel Management	G, N	1, 2, 3	3F/6P	General English (Units 3&4, C)	Any two units of English (Band 2)	63.15	✓

@ Available at Nathan only.

* Graduates will be eligible to apply for admission to the Master of Architecture, which provides the academic qualifications needed for accreditation as an architect.

Aviation

Reach exciting new heights as part of Australia's most highly recognised aviation program.

Gain the necessary skills and knowledge for lifelong learning in an ever-evolving industry.

Choose from study options including pilot training, aviation management, navigation and planning.

CAREER OUTCOMES

Charter pilot
Flight instructor
Airline manager
Air traffic controller
Airline captain
Air Force first officer
Airline staff trainer

29

Our degrees

STUDY AREA / MAJOR	DEGREE	CAMPUS	START TRIMESTER	DURATION	PREREQUISITES		2020	
					QTAC	UAC	ATAR	VET PATHWAYS
Aviation (pilot training)	Bachelor of Aviation*	N	1, 2†	2F#	General English (Units 3&4, C) A: General Mathematics or Mathematical Methods (Units 3&4, C) R: Biology or Physics (Units 3&4, C)		63.15	✓
Aviation management	Bachelor of Aviation Management^	N, O	1, 2	2F# 1.5F@	General English (Units 3&4, C) A: General Mathematics or Mathematical Methods (Units 3&4, C)		63.15	✓

* The Bachelor of Aviation together with the Graduate Diploma of Flight Management will allow graduates to be ready to work in the aviation industry as a commercial pilot. This degree is offered in accelerated mode only, and includes Trimester 3 study. There will be no breaks between trimesters for the duration of the degree.

^ A graduate entry option is also available. Applicants apply direct to Griffith, not through QTAC. For this option, applicants must have an AQF associate degree or equivalent, or at least five years' equivalent full-time aviation industry experience and either professional aviation industry qualifications or a technical industry certification plus relevant VET certificate. The graduate entry option can be completed over three trimesters of full-time study.

† Trimester 2 entry is only available to students commencing in the Professional Entry Pathway.

Equivalent to 3 years studied in accelerated mode over 2 years.

@ Equivalent to 3 years studied in accelerated mode over 1.5 years (Professional Entry Pathway only).

From skydiving pilot to First Officer at a major regional airline, Cameron Stuart's aviation career has taken off. He credits his Bachelor of Aviation degree, and particularly the industry connections he gained during his studies, with providing the launching pad he needed to achieve his goals as a pilot. 'Griffith does such a great job in connecting its students with industry and it's such a well-respected name within the industry, which just pays dividends from a student's point of view,' he said. Today, he regularly flies alongside other Griffith University graduates, attesting to the high regard to which the degree is held within the industry. Cameron said that completing his degree expanded his skillset beyond the technical aspects of flying a plane, which is vital as he plays a key role in managing all aspects of a flight each day at work.

Cameron Stuart
Bachelor of Aviation



Business, tourism and commerce

30

Find your place in the future of business with Griffith's innovative, forward-thinking degrees.

Join the next generation of leaders and professionals with the skills to influence progressive thinking in a range of dynamic industries. Benefit from expert teachers, gain valuable practical experience and develop sought-after attributes before you graduate.

CAREER OUTCOMES

Business manager or owner
Accountant
Economist
Financial adviser
Digital marketer
Advertising executive
Tourism operator
Event organiser

STUDY AREA / MAJOR	DEGREE	CAMPUS	START TRIMESTER	DURATION	PREREQUISITES		2020	
					QTAC	UAC	ATAR	VET PATHWAYS
Accounting*								
Asian business*								
Asian studies^								
Behavioural science*								
Economics*								
Employment relations^								
Event management*								
Finance*								
Financial planning*								
Government and international relations*								
Human resource management	Bachelor of Business	G, N, O	1, 2, 3	3F/6P	General English (Units 3&4, C)	Any two units of English (Band 2)	NEW IN 2021	
Innovation and entrepreneurship	Bachelor of Advanced Business (Honours)	G, N, O	1, 2, 3	4F/8P	General English (Units 3&4, C)	Any two units of English (Band 2)	NEW IN 2021	
International business*								
Languages® (see page 40)								
Logistics and supply chain management*								
Management								
Marketing*								
Real estate and property development*								
Sport management*								
Sustainable business^								
Tourism management*								
Finance	Bachelor of Applied Financial Advice	O	1, 2	2F/4P	General English (Units 3&4, C)	Any two units of English (Band 2)	63.15	✓
Financial planning								
Event management								
Hospitality management								
Human resource management								
Management	Bachelor of International Tourism and Hotel Management	G, N	1, 2, 3	3F/6P	General English (Units 3&4, C)	Any two units of English (Band 2)	63.15	✓
Marketing								
Real estate and property development								
Sport management								
Tourism management								

‘You don’t learn to be a leader out of a book; it’s something that happens through experience. Griffith Business School gave me the chance to gain that valuable experience.’

STUDY AREA / MAJOR	DEGREE	CAMPUS	START TRIMESTER	DURATION	PREREQUISITES		2020	
					QTAC	UAC	ATAR	VET PATHWAYS
Enterprise management	Bachelor of Business Innovation	L	1, 2, 3	2F/4P	General English (Units 3&4, C)	Any two units of English (Band 2)	59.40	✓
Public relations	Bachelor of Arts	G, N	1, 2, 3	3F/6P	General English (Units 3&4, C)	Any two units of English (Band 2)	63.15	✓
Communication and public relations	Bachelor of Communication and Journalism	G, N	1	3F/6P	General English (Units 3&4, C)	Any two units of English (Band 2)	63.15	✓
Aviation management	Bachelor of Aviation Management†	N, O	1, 2	3F 2F# 1.5F\$	General English (Units 3&4, C) A: General Mathematics or Mathematical Methods (Units 3&4, C)	N/A	63.15	✓

* Available at Nathan and Gold Coast only.

^ Available at Nathan only.

@ Available as a second major (or minor) only.

Equivalent to 3 years studied in accelerated mode over 2 years.

\$ Equivalent to 3 years studied in accelerated mode over 1.5 years (Professional Entry Pathway only).

† A graduate entry option is also available. For this option, applicants apply directly to Griffith, not through QTAC. To be successful, applicants must have an AQF associate degree or equivalent, or at least 5 years equivalent full-time aviation industry experience and either professional aviation industry qualifications or a technical industry certification plus relevant VET certificate. The graduate entry option can be completed in 1.5 years (full-time).

‘Griffith’s industry connections and partnerships offer a wealth of opportunities for business students,’ Alvin Yap says. ‘I know firsthand what rewards are on offer. I put my hand up to volunteer at the Gold Coast 2018 Commonwealth Games and ended up with a job. I applied for an internship through Griffith’s partnership with the Games and was successful.’ After throwing himself into the role, Alvin was subsequently hired to work during the Commonwealth Games in the transport division, and met many famous athletes along the way. ‘You don’t learn to be a leader out of a book; it’s something that happens through experience. Griffith Business School gave me the chance to gain that valuable experience.’

Alvin Yap
Bachelor of Business



Education

32

Be a part of the next generation of teachers—from early childhood to adult education—at one of Australia's strongest schools for graduate success.

With practical placements from first year, the flexibility to choose your major in second year, and the option to fast-track your degree, Griffith provides the perfect launching pad for future educators.

CAREER OUTCOMES

Primary school teacher
Secondary school teacher
Early childhood education teacher
Special needs teacher
Physical education teacher

STUDY AREA / MAJOR	DEGREE	CAMPUS	START TRIMESTER	DURATION	PREREQUISITES		2020	
					QTAC	UAC	ATAR	VET PATHWAYS
Majors: Early childhood education ^{&} Special needs education [#] Health and physical education [@] Minors: English education Mathematics education [^] Science education [^]	Bachelor of Education (specialising in primary education)	G, L, M	1, 2	3.5F*	General English (Units 3&4, C), General Mathematics, Mathematical Methods or Specialist Mathematics (Units 3&4, C), NARTE [†] Additional entry information: students selecting Primary Education from second year will also need to have completed a science subject (Units 3&4, C) or equivalent.	Any two units of English (Band 2), Mathematics General 2, Mathematics or HSC Mathematics Extension 1 or 2 (Band 2 or higher), NARTE [†] Additional entry information: students selecting Primary Education from second year will also need to have completed any two units of science (Band 2 or higher).	69.35	✓
Major: Junior secondary education Teaching areas: Biology Business and economics [%] Chemistry (must be combined with Biology or Mathematics) Design technology Digital solutions [%] English Food and nutrition History Industrial technology skills [%] Legal studies [%] Mathematics Physics (must be combined with Mathematics) Psychology	Bachelor of Education (specialising in secondary education)	G	1, 2	3.5F*	General English (Units 3&4, C), General Mathematics, Mathematical Methods or Specialist Mathematics (Units 3&4, C), NARTE [†] Additional entry information: it is recommended that students select teaching areas that they have successfully studied in their senior schooling. In particular, for the Mathematics teaching area: Mathematical Methods or Specialist Mathematics; and for Chemistry, Biology or Physics teaching areas: Chemistry, Biology or Physics respectively.	Any two units of English (Band 2), Mathematics General 2, Mathematics or HSC Mathematics Extension 1 or 2 (Band 2 or higher), NARTE [†] Additional entry information: it is recommended that students select teaching areas that they have successfully studied in their senior schooling. In particular, for the Mathematics teaching area: HSC Mathematics Extension 1 or 2; and for Chemistry, Biology or Physics teaching areas: Chemistry, Biology or Physics respectively.	69.35	✓
Majors: Junior secondary education Learning support Teaching areas: Biology Business and economics [%] Chemistry (must be combined with Biology or Mathematics) Digital solutions [%] Drama English Geography Health and physical education History Legal studies [%] Mathematics Physics (must be combined with Mathematics) Psychology Visual arts	Bachelor of Education (specialising in secondary education)	M	1, 2	3.5F*	General English (Units 3&4, C), General Mathematics, Mathematical Methods or Specialist Mathematics (Units 3&4, C), NARTE [†] Additional entry information: it is recommended that students select teaching areas that they have successfully studied in their senior schooling. In particular, for the Mathematics teaching area: Mathematical Methods or Specialist Mathematics; and for Chemistry, Physics or Biology teaching areas: Chemistry, Physics or Biology respectively.	N/A	69.35	✓

[^] Available at Gold Coast and Mt Gravatt only.

[#] Available at Mt Gravatt only.

[&] Available at Logan only.

[†] Non-Academic Requirements for Teacher Education (NARTE). Applicants must meet both academic and non-academic entry requirements to be eligible for this degree.

For further information, please visit the QTAC Teacher entry website: qtac.edu.au/courses---institutions/teacher-entry

[@] Available at Gold Coast only.

^{*} Equivalent to 4 years studied in accelerated mode over 3.5 years.

[%] Subject to University approval.

Engineering

Focus on innovation and gain the experience needed to create smarter solutions for all sectors of society.

With degrees specialising in civil, electrical, environmental, mechanical and software engineering, Griffith will give you all the tools to succeed no matter the future you want to build.

CAREER OUTCOMES

Civil engineer
Electrical engineer
Biomedical engineer
Environmental engineer
Mechanical engineer
Software engineer
Industrial engineer
Construction manager

33

Our degrees

STUDY AREA / MAJOR	DEGREE	CAMPUS	START TRIMESTER	DURATION	PREREQUISITES		2020	
					QTAC	UAC	ATAR	VET PATHWAYS
Civil engineering	Bachelor of Engineering (Honours)	G	1, 2 [^]	4F/8P	General English (Units 3&4, C), Mathematical Methods (Units 3&4, C) R: one of Chemistry, Specialist Mathematics or Physics (Units 3&4, C)	Any two units of English (Band 2) plus Mathematics R: one of Chemistry, HSC Mathematics Extension 1 or 2, or Physics	73.30	✓
Electrical and electronic engineering								
Mechanical engineering								
Software engineering								
Civil engineering	Bachelor of Engineering (Honours)	N	1, 2 [^]	4F/8P	General English (Units 3&4, C), Mathematical Methods (Units 3&4, C) R: one of Chemistry, Specialist Mathematics or Physics (Units 3&4, C)	N/A	69.35	✓
Electronic engineering								
Electronic and energy engineering								
Electronic and unmanned aerial vehicle (UAV) engineering								
Environmental engineering								
Mechatronics								
Mechanical engineering								
Software engineering								
Engineering technology and electronic and computer engineering	Bachelor of Engineering Technology in Electronic and Computer Engineering	N	1, 2	3F/6P	General English (Units 3&4, C) Assumed: General Mathematics (Units 3&4, C) R: one of Chemistry, Specialist Mathematics or Physics (Units 3&4, C)	N/A	66.45	✓
Industrial design	Bachelor of Industrial Design	G	1, 2	3F/6P	General English (Units 3&4, C) A: General Mathematics or Mathematical Methods (Units 3&4, C)	Any two units of English (Band 2) A: Mathematics General 2 or Mathematics	69.35	✓
Software development	Bachelor of Computer Science	G	1, 2	3F/6P	General English (Units 3&4, C) A: Mathematical Methods (Units 3&4, C)	Any two units of English (Band 2) A: Mathematics	73.30	✓

[^] Students starting in Trimester 2 must also study in Trimester 3 for their first year of study. From second year onwards, Trimester 3 will be optional.

Environment

34

Make a difference in tackling the environmental challenges of the 21st century and help shape the future of our communities.

Understand the natural, social and economic drivers behind local and global environmental issues, and be equipped to develop the solutions needed by industry and wider society.

CAREER OUTCOMES

Environmental engineer
Environmental consultant
Environmental health project officer
Environmental scientist
Marine biologist
Park or wildlife ranger
City planner

STUDY AREA / MAJOR	DEGREE	CAMPUS	START TRIMESTER	DURATION	PREREQUISITES		2020	
					QTAC	UAC	ATAR	VET PATHWAYS
Ecology and conservation Environmental management Soil and water science Urban environments	Bachelor of Environmental Science	G, N	1, 2, 3	3F/6P	General English (Units 3&4, C) A: General Mathematics or Mathematical Methods (Units 3&4, C) R: one of Biology, Chemistry or Physics (Units 3&4, C)	Any two units of English (Band 2) A: Mathematics General 2 or Mathematics R: one of Biology, Chemistry or Physics	63.15	✓
Coastal management# Coastal oceanography# Marine chemistry# Marine ecology#	Bachelor of Marine Science	G	1, 2	3F/6P	General English (Units 3&4, C) A: General Mathematics or Mathematical Methods (Units 3&4, C) R: one of Biology, Chemistry or Physics (Units 3&4, C)	Any two units of English (Band 2) A: Mathematics General 2 or Mathematics R: one of Biology, Chemistry or Physics	66.45	✓
Urban planning	Bachelor of Urban and Environmental Planning	G, N	1, 2	4F/8P	General English (Units 3&4, C) R: General Mathematics or Mathematical Methods (Units 3&4, C)	Any two units of English (Band 2) R: Mathematics General 2 or Mathematics	63.15	✓
Biochemistry and molecular biology Chemistry Geography Marine biology^ Microbiology* Wildlife biology	Bachelor of Science	G, N	1, 2, 3	3F/6P	General English (Units 3&4, C) A: General Mathematics or Mathematical Methods (Units 3&4, C) R: one of Biology, Chemistry or Physics (Units 3&4, C)	Any two units of English (Band 2) A: Mathematics General 2 or Mathematics R: one of Biology, Chemistry or Physics	NEW IN 2021	
Environmental engineering*	Bachelor of Engineering (Honours)	G	1, 2†	4F/8P	General English (Units 3&4, C), Mathematical Methods (Units 3&4, C) R: one of Chemistry, Specialist Mathematics or Physics (Units 3&4, C)	Any two units of English (Band 2) Mathematics R: one of Chemistry, Physics or HSC Mathematics Extension 1 or 2	73.30	✓
Electronic and energy engineering*		N	1, 2†	4F/8P		N/A	69.35	
Science research (advanced)	Bachelor of Science Advanced (Honours)	G, N	1, 2, 3	4F@/8P	General English (Units 3&4, C) A: General Mathematics or Mathematical Methods (Units 3&4, C) R: one of Biology, Chemistry or Physics (Units 3&4, C)	N/A	N/A	N/A
Sustainable business	Bachelor of Business	N	1, 2, 3	3F/6P	General English (Units 3&4, C)	N/A	NEW IN 2021	
Environmental public relations and communications	Bachelor of Communication and Journalism	G, N	1	3F/6P	General English (Units 3&4, C)	Any two units of English (Band 2)	63.15	✓

* Available at Nathan only.

^ Available at Gold Coast only.

Available as a minor only.

† Students starting in Trimester 2 must also study in Trimester 3 for their first year of study. From second year onwards, Trimester 3 will be optional.

@ You can choose to exit with a Bachelor of Science Advanced after your third year or, if eligible depending on your level of achievement, continue into fourth year to graduate with a Bachelor of Science Advanced (Honours).

Government and international relations

Learn about the forces that drive economic, political and social change and be prepared to make a difference.

Find your place among fellow future policymakers and politicians, and develop the skills to anticipate—and respond to—emerging trends and challenges in the global diplomatic community.

CAREER OUTCOMES

Policymaker
 Export manager
 Diplomat
 Politician
 International business analyst
 Security adviser
 Consultant
 Policy adviser

35

Our degrees

STUDY AREA / MAJOR	DEGREE	CAMPUS	START TRIMESTER	DURATION	PREREQUISITES		2020	
					QTAC	UAC	ATAR	VET PATHWAYS
Asian business*	Bachelor of Business	G, N, O	1, 2, 3	3F/6P	General English (Units 3&4, C)	Any two units of English (Band 2)	NEW IN 2021	
Asian studies^								
Economics*								
International business*	Bachelor of Advanced Business (Honours)	G, N, O	1, 2, 3	4F/8P	General English (Units 3&4, C)	Any two units of English (Band 2)	NEW IN 2021	
Languages† (see page 40)	Bachelor of Government and International Relations	G, N	1, 2	3F/6P	General English (Units 3&4, C)	Any two units of English (Band 2)	63.15	✓
Asian business								
Economics								
Languages† (see page 40)								
International business								
International relations								
Islam–West relations	Bachelor of Arts	G, N	1, 2, 3	3F/6P	General English (Units 3&4, C)	Any two units of English (Band 2)	63.15	✓
Politics and public policy								
Islam–West relations								
Politics and international studies	Bachelor of Social Science	G, N	1	3F/6P	General English (Units 3&4, C)	Any two units of English (Band 2)	73.30	✓
Security studies								
Economics								
Environmental sustainability								
Global security threats								
Media, communication and social change								
Politics in Asia								
Social justice								
Social science								

* Available at Nathan and Gold Coast only.

^ Available at Nathan only.

† Available as a second major (or minor) only.

Humanities, social science, journalism and communication

Develop a deeper understanding of the world's societies and cultures, and the people who live in them.

Benefit from a wide range of internships and practical experiences to build your skills and reach your full potential.

CAREER OUTCOMES

Journalist
Language teacher
Communications manager
Public relations consultant
Policymaker
Author
Arts facilitator
Museum curator

STUDY AREA / MAJOR	DEGREE	CAMPUS	START TRIMESTER	DURATION	PREREQUISITES		2020	
					QTAC	UAC	ATAR	VET PATHWAYS
Interactive storytelling	Bachelor of Creative Industries	G	1, 2	3F/6P	General English (Units 3&4, C)	Any two units of English (Band 2)	63.15	✓
Drama								
Art history and theory								
Australian studies								
Communication and journalism								
Creative writing								
Criminal justice								
Drama								
Gender studies								
History								
Indigenous studies								
Islam–West relations								
Journalism								
Language in society								
Languages (see page 40)	Bachelor of Arts	G, N	1, 2, 3	3F/6P	General English (Units 3&4, C)	Any two units of English (Band 2)	63.15	✓
Literary studies								
Politics and international studies								
Popular culture								
Psychology								
Strategic communication and public relations								
Screen studies								
Security studies								
Sociology								
Social justice								
Communication and public relations								
Journalism								
Economics								
Environmental sustainability								
Global security threats	Bachelor of Social Science	G, N	1	3F/6P	General English (Units 3&4, C)	Any two units of English (Band 2)	73.30	✓
Media, communication and social change								
Politics in Asia								
Social justice								
Social science								

'I love being able to share what happens in the industry with students going through uni who are so keen to learn.'

STUDY AREA / MAJOR	DEGREE	CAMPUS	START TRIMESTER	DURATION	PREREQUISITES		2020	
					QTAC	UAC	ATAR	VET PATHWAYS
Asian business and cultural studies	Bachelor of Business	G, N	1, 2, 3	3F/6P	General English (Units 3&4, C)	Any two units of English (Band 2)	NEW IN 2021	
Economics								
Government and international relations								
Languages (see page 40)								
Marketing								
Economics	Bachelor of Government and International Relations	G, N	1, 2	3F/6P	General English (Units 3&4, C)	Any two units of English (Band 2)	63.15	✓
Languages (see page 40)								
International relations								
Islam–West relations								
Politics and public policy								
English	Bachelor of Education (specialising in secondary education)	M	1, 2	3.5F%	General English (Units 3&4, C), General Mathematics, Mathematical Methods or Specialist Mathematics (Units 3&4, C), NARTE [†] [^]	N/A	69.35	✓
Geography								
History								

% Equivalent to 4 years studied in accelerated mode over 3.5 years.

[†] See page 32 for additional entry information.

[^] Non-Academic Requirements for Teacher Education (NARTE). Applicants must meet both academic and non-academic entry requirements to be eligible for this degree.

For further information, please visit the QTAC Teacher entry website: qtac.edu.au/courses---institutions/teacher-entry

Ange Anderson has forged a formidable career newsreading for radio stations up and down the east coast. Currently the newsreader for Ash, Kip, Luttsy & Susie at Nova 106.9 in Brisbane, Ange also tutors in Digital Audio Media Production at Griffith Gold Coast campus. 'I love being able to share what happens in the industry with students going through uni who are so keen to learn.'

Angela Anderson

Newsreader, Ash, Kip, Luttsy & Susie, Nova 106.9
Bachelor of Communication



Information technology

38

Be prepared to to shape the way forward in technology through our innovative, future-ready degrees.

Gain a strong theoretical grounding through our technology-related programs while combining this with industry-relevant practical experience. Learn using cutting-edge facilities and be equipped to graduate with the technical and interpersonal skills employers want.

CAREER OUTCOMES

Software developer
IT support officer
Database and systems administrator
Technical writer
Web developer
IT sales representative

STUDY AREA / MAJOR	DEGREE	CAMPUS	START TRIMESTER	DURATION	PREREQUISITES		2020	
					QTAC	UAC	ATAR	VET PATHWAYS
Internet of things and robotics	Bachelor of Applied Information Technology	L	1, 2	3F/6P	General English (Units 3&4, C) A: General Mathematics or Mathematical Methods (Units 3&4, C)	N/A	63.15	✓
Programming for visualisation and entertainment								
Information systems	Bachelor of Information Technology	G, N	1, 2, 3	3F/6P	General English (Units 3&4, C) A: General Mathematics or Mathematical Methods (Units 3&4, C)	Any two units of English (Band 2) A: Mathematics General 2 or Mathematics	63.15	✓
Networks and security								
Software development								
Data science and artificial intelligence	Bachelor of Computer Science	G	1, 2	3F/6P	General English (Units 3&4, C) A: Mathematical Methods (Units 3&4, C)	Any two units of English (Band 2) A: Mathematics	73.30	✓
Software development								
Internet of things and robotics	Bachelor of Intelligent Digital Technologies	G, N	1, 2	3F/6P	General English (Units 3&4, C) A: Mathematical Methods (Units 3&4, C)	Any two units of English (Band 2) A: Mathematics	66.45	✓
Programming for visualisation and entertainment								
Civil engineering	Bachelor of Engineering (Honours)	G	1, 2*	4F/8P	General English (Units 3&4, C), Mathematical Methods (Units 3&4, C) R: one of Chemistry, Specialist Mathematics or Physics (Units 3&4, C)	Any two units of English (Band 2) plus Mathematics R: one of Chemistry, HSC Mathematics Extension 1 or 2, or Physics	73.30	✓
Electrical and electronic engineering								
Mechanical engineering								
Software engineering								
Civil engineering	Bachelor of Engineering (Honours)	N	1, 2*	4F/8P	General English (Units 3&4, C), Mathematical Methods (Units 3&4, C) R: one of Chemistry, Specialist Mathematics or Physics (Units 3&4, C)	N/A	69.35	✓
Electronic and energy engineering								
Electronic and UAV engineering								
Electronic engineering								
Environmental engineering								
Mechanical engineering								
Mechatronics								
Software engineering								

‘There is so much opportunity here at Griffith, and I’ve found that I fit in really well.’

STUDY AREA / MAJOR	DEGREE	CAMPUS	START TRIMESTER	DURATION	PREREQUISITES		2020	
					QTAC	UAC	ATAR	VET PATHWAYS
Engineering technology and electronic and computer engineering	Bachelor of Engineering Technology in Electronic and Computer Engineering	N	1, 2	3F/6P	General English (Units 3&4, C) A: General Mathematics (Units 3&4, C) R: one of Chemistry, Specialist Mathematics or Physics (Units 3&4, C)	N/A	66.45	✓
Media applications	Bachelor of Creative and Interactive Media	G, N, S	1, 2	3F/6P	General English (Units 3&4, C)	Any two units of English (Band 2)	63.15	✓
Games design	Bachelor of Games Design	S	1	3F/6P	General English (Units 3&4, C)	N/A	63.15	✓
Design technology	Bachelor of Education (specialising in secondary education)	G	1, 2	3.5F%	General English (Units 3&4, C), General Mathematics, Mathematical Methods or Specialist Mathematics (Units 3&4, C), NARTE [†] [^]	Any two units of English (Band 2), Mathematics General 2, Mathematics or HSC Mathematics Extension 1 or 2, NARTE [†] [^]	69.35	✓

Students starting in Trimester 2 must also study in Trimester 3 for their first year of study. From second year onwards, Trimester 3 will be optional.

% Equivalent to 4 years studied in accelerated mode over 3.5 years.

† See page 32 for additional entry information.

[^] Non-Academic Requirements for Teacher Education (NARTE). Applicants must meet both academic and non-academic entry requirements to be eligible for this degree.

For further information, please visit the QTAC Teacher entry website: qtac.edu.au/courses---institutions/teacher-entry

Unlocking the potential of quantum computers is one of the most exciting and complex challenges in tech, and Alex Zappacosta wants to be a part of it. His Bachelor of Science (Physics and Applied Maths)/Bachelor of Information Technology double degree brings together the knowledge and skills required to work in quantum computing. After completing his honours year, Alex has his sights set on a research career that might also include a PhD. ‘There is so much opportunity here at Griffith, and I’ve found that I fit in really well.’

Alex Zappacosta

Bachelor of Science/Bachelor of Information Technology



Languages

Discover a whole world of personal and professional possibility by learning another language.

Boost your employability in our increasingly multilingual international community, and be exposed to new perspectives and perceptions. With a range of dialects to explore, Griffith opens the door for you to engage across societies and cultures as an informed and adaptable global citizen.

CAREER OUTCOMES

Translator
Interpreter
Journalist
Language teacher
Company manager
International educator
Non-governmental organisation agent

LANGUAGE	BACHELOR OF ARTS	BACHELOR OF LANGUAGES AND LINGUISTICS	DIPLOMA OF LANGUAGES	BACHELOR OF BUSINESS	BACHELOR OF ADVANCED BUSINESS (HONOURS)	BACHELOR OF GOVERNMENT AND INTERNATIONAL RELATIONS
Chinese	✓	✓	✓	✓	✓	✓
French [^]	✓	✓				✓
German [^]	✓	✓				✓
Modern Greek [#]	✓	✓				✓
Indonesian [^]	✓	✓		✓	✓	✓
Italian	✓	✓	✓			✓
Japanese	✓	✓	✓	✓	✓	✓
Korean [^]	✓	✓		✓	✓	✓
Language in society	✓					
Linguistics		✓				
Russian [^]	✓	✓				✓
Spanish	✓	✓	✓			✓

DEGREE	CAMPUS	START TRIMESTER	DURATION	PREREQUISITES		2020	
				QTAC	UAC	ATAR	VET PATHWAYS
Bachelor of Arts	G, N	1, 2, 3	3F/6P	General English (Units 3&4, C)	Any two units of English (Band 2)	63.15	✓
Bachelor of Languages and Linguistics	G, N	1	3F/6P	General English (Units 3&4, C)	Any two units of English (Band 2)	63.15	✓
Diploma of Languages [†]	G, N	1, 2	2P	General English (Units 3&4, C)			N/A
Bachelor of Business	G, L, N, O	1, 2, 3	3F/6P	General English (Units 3&4, C)	Any two units of English (Band 2)	NEW IN 2021	
Bachelor of Advanced Business (Honours)	G, L, N, O	1, 2, 3	4F/8P	General English (Units 3&4, C)	Any two units of English (Band 2)	NEW IN 2021	
Bachelor of Government and International Relations	G, N	1, 2	3F/6P	General English (Units 3&4, C)	Any two units of English (Band 2)	63.15	✓

[^] Via cross-institutional study at The University of Queensland for degrees at Nathan only.

[#] Offered online via cross-institutional study at Flinders University.

[†] Applicants apply direct to Griffith, not through QTAC/UAC. You can also study the Diploma of Languages along with any bachelor degree.

With this option, you can continue learning a language taken at school or start a new language as a beginner, while also gaining a separate degree in another area.

Law and criminology

Study with Australia's top-ranked university for law, including criminology*, and help create a more just and equitable future for all.

Be immersed in industry-informed learning and authentic experiences from your first year, with the chance to gain valuable experience and connections working for real clients on real cases as part of your study.

CAREER OUTCOMES

Barrister
Solicitor
Police officer
Corrective services officer
Welfare support officer
Human rights defender
Journalist
Politician

41

Our degrees

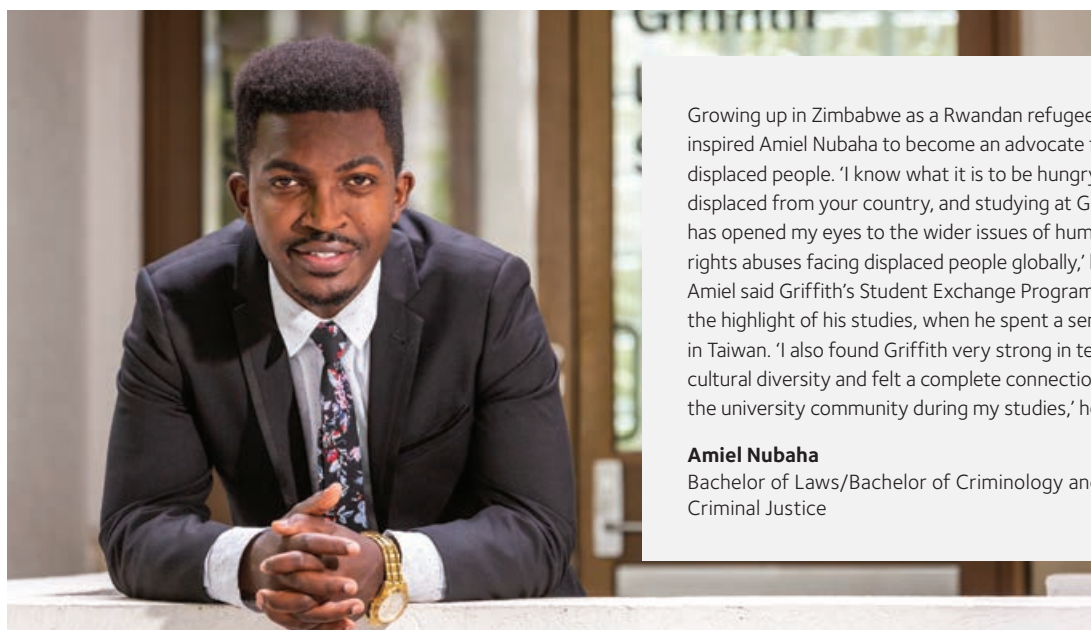
STUDY AREA / MAJOR	DEGREE	CAMPUS	START TRIMESTER	DURATION	PREREQUISITES		2020	
					QTAC	UAC	ATAR	VET PATHWAYS
Law	Bachelor of Laws (Honours)	G, N	1, 2	4F/8P/3F [#]	General English (Units 3&4, C)	Any two units of English (Band 2)	83.65	N/A
Law	Bachelor of Laws (Honours) [†]	G, N	1, 2	3F/6P/2F [^]	Graduate entry only	N/A	N/A	N/A
Criminology and criminal justice	Bachelor of Criminology and Criminal Justice	G, M, O	1, 2	3F/6P	General English (Units 3&4, C)	Any two units of English (Band 2)	63.15	✓
Criminal justice	Bachelor of Arts	G, N	1, 2, 3	3F/6P	General English (Units 3&4, C)	Any two units of English (Band 2)	63.15	✓
Social justice and security studies								
Global security threats	Bachelor of Social Science	G, N	1	3F/6P	General English (Units 3&4, C)	Any two units of English (Band 2)	73.30	✓
Social justice								

[#] You may choose to fast-track your four-year Bachelor of Laws (Honours) degree by studying elective subjects in Trimester 3, giving you the opportunity to graduate in as few as three years.

[†] Graduate entry degree. To apply for this degree, you must have a completed non-law degree (any discipline) with a minimum GPA of 4.0 on a 7-point scale (or equivalent).

[^] You may choose to fast-track your three-year Bachelor of Laws (Honours) (graduate entry) degree, giving you the opportunity to graduate in as few as two years.

* Source: ShanghaiRanking Global Ranking of Academic Subjects 2019.



Growing up in Zimbabwe as a Rwandan refugee has inspired Amiel Nubaha to become an advocate for displaced people. 'I know what it is to be hungry, to be displaced from your country, and studying at Griffith has opened my eyes to the wider issues of human rights abuses facing displaced people globally,' he says. Amiel said Griffith's Student Exchange Program was the highlight of his studies, when he spent a semester in Taiwan. 'I also found Griffith very strong in terms of cultural diversity and felt a complete connection with the university community during my studies,' he said.

Amiel Nubaha

Bachelor of Laws/Bachelor of Criminology and Criminal Justice

Medicine, dentistry and health

42

Physiotherapy, exercise science and sport, occupational therapy, nutrition and dietetics

Play a key role in creating healthier, fitter communities.

Whether you're interested in helping people stay active, recover from injury or illness, or better understand the foods they eat, Griffith has an Allied Health degree for you.

CAREER OUTCOMES

Physiotherapist
Exercise physiologist
Strength and conditioning coach
Dietitian
Occupational therapist
Exercise scientist
Sport development manager
Sport facilities manager

STUDY AREA / MAJOR	DEGREE	CAMPUS	START TRIMESTER	DURATION	PREREQUISITES		2020	
					QTAC	UAC	ATAR	VET PATHWAYS
Clinical exercise physiology	Bachelor of Clinical Exercise Physiology	G	1, 2	4F/8P	General English (Units 3&4, C) A: one of Biology, Chemistry, Physics or Mathematical Methods (Units 3&4, C)	Any two units of English (Band 2) A: one of Biology, Chemistry, Physics or Mathematics	78.10	N/A
Exercise science	Bachelor of Exercise Science	G	1, 2, 3	3F/6P	General English (Units 3&4, C) A: one of Biology, Chemistry, Physics or Mathematical Methods (Units 3&4, C)	Any two units of English (Band 2) A: one of Biology, Chemistry, Physics or Mathematics	63.15	✓
Nutrition and dietetics	Bachelor of Nutrition and Dietetics	G	1, 2*	4F/6P (4F+2P)	General English (Units 3&4, C) A: Biology, Chemistry and Mathematical Methods (Units 3&4, C)	Any two units of English (Band 2) A: Biology, Chemistry and Mathematics	83.65	✓
Nutrition and dietetics	Bachelor of Nutrition and Dietetics (graduate entry) [^]	G	1	2F	Completion of an approved bachelor degree with relevant science courses		N/A	N/A
Occupational therapy	Bachelor of Occupational Therapy	G, N	1	4F/6P (4F+2P)	General English (Units 3&4, C) plus one of Biology, Physics or Chemistry (Units 3&4, C)	Any two units of English (Band 2) A: one of Biology, Chemistry or Physics	86.85	N/A
Physiotherapy	Bachelor of Physiotherapy	G, N	1	4F	General English (Units 3&4, C) A: Mathematical Methods (Units 3&4, C) plus one of Biology, Chemistry or Physics (Units 3&4, C)	Any two units of English (Band 2) A: Mathematics plus one of Biology, Physics or Chemistry	97.00	N/A
Sport development	Bachelor of Sport Development	G	1	3F/6P	General English (Units 3&4, C) A: one of General Mathematics, Mathematical Methods, Biology, Chemistry or Physics (Units 3&4, C)	Any two units of English (Band 2) A: one of Biology, Chemistry, Physics, Mathematics General 2 or Mathematics	66.45	✓

* Trimester 2 intake available to Griffith students via internal transfer only.

[^] Applicants apply directly to Griffith, not through QTAC/UAC.

‘Networking within the industry and helping develop elite players to represent Australia has been an invaluable experience.’

‘Through my Bachelor of Sport Development degree, I have had the opportunity to intern for the Griffith Women’s Rugby 7s program,’ Lucy Turney says. ‘As part of the Australian Rugby Union elite pathway, the Aon Uni 7s series has allowed me to work directly with athletes and coaches focusing on training and performance analysis as well as utilising my communication and management skills to assist with delivering the program. Networking within the industry and helping develop elite players to represent Australia has been an invaluable experience. I look forward to graduating and working as a development officer within a sporting organisation.’

Lucy Turney
Bachelor of Sport Development



Medicine, dentistry and health

44

Medical science and technology, clinical research and health science

Take your place at the leading edge of medical research.

Have the chance to break new ground in the fields of medical science and healthcare through our extensive hands-on, laboratory-based study options.

CAREER OUTCOMES

Medical laboratory scientist
Clinical trials monitor
Healthcare technician
Laboratory support technician
Environmental scientist
Formulation chemist
Biomedical scientist
Environmental health officer

STUDY AREA / MAJOR	DEGREE	CAMPUS	START TRIMESTER	DURATION	PREREQUISITES		2020	
					QTAC	UAC	ATAR	VET PATHWAYS
Medical science	Bachelor of Biomedical Science	G	1, 2	3F	General English (Units 3&4, C) A: Mathematical Methods (Units 3&4, C) plus one of Biology, Chemistry or Physics (Units 3&4, C)	Any two units of English (Band 2) A: Mathematics plus one of Biology, Chemistry or Physics	81.45	N/A
		N	1, 2	3F		N/A	69.35	✓
Medical science research	Bachelor of Biomedical Science (Honours)	G	1	3F*	General English (Units 3&4, C) A: Mathematical Methods (Units 3&4, C) plus one of Biology, Chemistry or Physics (Units 3&4, C)	Any two units of English (Band 2) A: Mathematics plus one of Biology, Chemistry or Physics	96.00	N/A
Medical diagnostics	Bachelor of Medical Laboratory Science	G	1, 2	4F	General English (Units 3&4, C) A: Mathematical Methods (Units 3&4, C) plus one of Biology, Chemistry or Physics (Units 3&4, C)	Any two units of English (Band 2) A: Mathematics plus one of Biology, Chemistry or Physics	78.10	✓
Communication and media	Bachelor of Health Science	G	1, 2, 3	3F/6P	General English (Units 3&4, C) A: one of Biology, Chemistry, Physics or Mathematical Methods (Units 3&4, C)	Any two units of English (Band 2) A: one of Biology, Chemistry, Physics or Mathematics	66.45	✓
Environmental health								
Environmental toxicology								
Health science								
Information technology								
Pre-clinical	Bachelor of Pharmacology and Toxicology	G	1, 2	3F/6P	General English (Units 3&4, C) A: Mathematical Methods or C (Units 3&4, C) plus one of Biology, Chemistry or Physics (Units 3&4, C)	Any two units of English (Band 2) A: Mathematics or HSC Mathematics Extension 1 or 2, plus one of Biology, Chemistry or Physics	69.35	✓
Pharmaceutical								
Clinical sciences	Bachelor of Science	G, N	1, 2, 3	3F/6P	General English (Units 3&4, C) A: General Mathematics or Mathematical Methods (Units 3&4, C) R: one of Biology, Chemistry or Physics (Units 3&4, C)	Any two units of English (Band 2) A: Mathematics General 2 or Mathematics R: One of Biology, Chemistry or Physics	NEW IN 2021	
Microbiology								

* Equivalent to 4 years studied in accelerated mode over 3 years.

Medicine, dentistry and health

Psychology, social work and human services

Improve health and social outcomes for people from all walks of life.

From mental health to community support, these degrees will prepare you to anticipate and respond to the diverse needs of individuals, families and communities around Australia.

CAREER OUTCOMES

Psychologist
Counsellor
Social worker
Welfare support officer

45

Our degrees

STUDY AREA / MAJOR	DEGREE	CAMPUS	START TRIMESTER	DURATION	PREREQUISITES		2020	
					QTAC	UAC	ATAR	VET PATHWAYS
Counselling	Bachelor of Counselling	G, M	1, 2, 3	3F/6P	General English (Units 3&4, C)	Any two units of English (Band 2)	66.45	✓
Child and family services	Bachelor of Child, Youth and Family Practice	L, O	1, 2	3F/6P	General English (Units 3&4, C)	Any two units of English (Band 2)	63.15	✓
Human services	Bachelor of Human Services	G	1, 2	2-3F/6P [@]		Any two units of English (Band 2)	66.45	
		L	1, 2	2-3F/6P [@]	General English (Units 3&4, C)	N/A	66.45	✓
		O	1, 2	2-3F/6P [@]		Any two units of English (Band 2)	66.45	
Psychological science	Bachelor of Psychological Science*	G, M	1, 2, 3	3F/6P	General English (Units 3&4, C)	Any two units of English (Band 2)	66.45	✓
Psychology	Bachelor of Psychology (Honours)	G	1, 2, 3	4F/8P	General English (Units 3&4, C)	Any two units of English (Band 2)	78.10	✓
		M	1, 2, 3	4F/8P		N/A	78.10	
Social work	Bachelor of Social Work	G, L, O	1, 2	4F/8P	General English (Units 3&4, C)	Any two units of English (Band 2)	66.45	✓
Psychology	Bachelor of Education (specialising in secondary education)	G, M	1, 2	3.5F [#]	General English (Units 3&4, C), General Mathematics, Mathematical Methods or Specialist Mathematics (Units 3&4, C) NARTE ^{†^}	Any two units of English (Band 2), Mathematics General 2, Mathematics or HSC Mathematics Extension 1 or 2 (Band 2 or higher), NARTE ^{†^}	69.35	✓
Psychology	Bachelor of Arts	G, N	1, 2, 3	3F/6P	General English (Units 3&4, C)	Any two units of English (Band 2)	63.15	✓
Sociology								
Social science	Bachelor of Social Science	G, N	1	3F/6P	General English (Units 3&4, C)	Any two units of English (Band 2)	73.30	✓

[@] Students may undertake an accelerated pathway enabling completion of the Bachelor of Human Services in a shorter timeframe (2-2.5 years full-time). Students who undertake the accelerated pathway will be required to study full-time and complete 40 credit points each trimester including Trimester 3.

^{*} Honours is available for these degrees if you wish to work as a psychologist. This involves an additional year to complete the Bachelor of Psychological Science with Honours.

You must meet the entry requirements to be eligible for honours.

[#] Equivalent to 4 years studied in accelerated mode over 3.5 years.

[†] See page 32 for additional entry information.

[^] Non-Academic Requirements for Teacher Education (NARTE). Applicants must meet both academic and non-academic entry requirements to be eligible for this degree.

For further information, please visit the QTAC Teacher entry website: qtac.edu.au/courses---institutions/teacher-entry

Medicine, dentistry and health

46

Medicine, paramedicine, public health, nursing and midwifery, dentistry, pharmacy

Put public wellbeing first as part of the future of healthcare specialists.

Be both challenged and rewarded as you learn in state-of-the-art facilities and through practical placements to give you an edge in competitive and dynamic medical fields.

CAREER OUTCOMES

Doctor
Surgeon
Dentist
Dental hygienist or technician
Nurse
Midwife
Paramedic
Pharmacist
Public health officer

STUDY AREA / MAJOR	DEGREE	CAMPUS	START TRIMESTER	DURATION	PREREQUISITES		2020	
					QTAC	UAC	ATAR	VET PATHWAYS
Dentistry	Bachelor of Dental Health Science*	G	1	3F	General English (Units 3&4, C) A: one of Biology, Chemistry, Physics or Mathematical Methods (Units 3&4, C)	Any two units of English (Band 2) A: one of Biology, Chemistry, Physics or Mathematics	99.00	N/A
Dental prosthetics	Bachelor of Dental Prosthetics	G	1	3F	General English (Units 3&4, C) A: one of Biology, Chemistry, Physics or Mathematical Methods (Units 3&4, C)	Any two units of English (Band 2) A: one of Biology, Chemistry, Physics or Mathematics	81.45	N/A
Dental technology	Bachelor of Dental Technology	G	1	3F	General English (Units 3&4, C) A: one of Biology, Chemistry, Physics or Mathematical Methods (Units 3&4, C)	Any two units of English (Band 2) A: one of Biology, Chemistry, Physics or Mathematics	83.65	✓
Dental hygiene	Bachelor of Dental Hygiene	G	1	3F	General English (Units 3&4, C) A: one of Biology, Chemistry, Physics or Mathematical Methods (Units 3&4, C)	Any two units of English (Band 2) A: one of Biology, Chemistry, Physics or Mathematics	97.00	N/A
Medical science, medicine	Bachelor of Medical Science [§]	G, N	1	2F [^]	General English (Units 3&4, C) A: Mathematical Methods (Units 3&4, C) plus one of Biology, Chemistry or Physics (Units 3&4, C)	Any two units of English (Band 2) A: Mathematics, plus one of Biology, Chemistry or Physics	99.00	N/A
Midwifery	Bachelor of Midwifery	G, L [@]	1	3F/ 2P+2F	General English (Units 3&4, C)	N/A	94.00	N/A
Nursing	Bachelor of Nursing	G	1, 2 [†]	3F/6P	General English (Units 3&4, C)	Any two units of English (Band 2)	81.45	✓
		L, N	1, 2 [†]	3F/6P		N/A	78.10	
	Bachelor of Nursing (Advanced Standing) [®]	G	1, 2	2F		Any two units of English (Band 2)	N/A	N/A
		L, N	1, 2	2F		N/A		
Pharmacy	Bachelor of Pharmacy	G	1, 2	4F	General English (Units 3&4, C) A: Mathematical Methods or C (Units 3&4, C) plus one of Biology, Chemistry or Physics (Units 3&4, C)	Any two units of English (Band 2) A: Mathematics or HSC Mathematics Extension 1 or 2, plus one of Biology, Chemistry or Physics	75.70	✓

STUDY AREA / MAJOR	DEGREE	CAMPUS	START TRIMESTER	DURATION	PREREQUISITES		2020	
					QTC	UAC	ATAR	VET PATHWAYS
Pre-clinical								
Pharmaceutical industry	Bachelor of Pharmacology and Toxicology	G	1, 2	3F	General English (Units 3&4, C) A: Mathematical Methods or C (Units 3&4, C) plus one of Biology, Chemistry or Physics (Units 3&4, C)	Any two units of English (Band 2) A: Mathematics or HSC Mathematics Extension 1 or 2, plus one of Biology, Chemistry or Physics	69.35	✓
Paramedicine	Bachelor of Paramedicine	G	1	3F	General English (Units 3&4, C) plus one of Biology, Chemistry, Physics or Mathematical Methods (Units 3&4, C)	Any two units of English (Band 2) A: one of Biology, Chemistry, Physics or Mathematics	97.00	N/A
Public health	Bachelor of Public Health	G	1, 3	3F/6P	General English (Units 3&4, C)	Any two units of English (Band 2)	66.45	✓
Medical science	Bachelor of Biomedical Science	G	1, 2	3F	General English (Units 3&4, C) A: Mathematical Methods (Units 3&4, C) plus one of Biology, Chemistry or Physics (Units 3&4, C)	Any two units of English (Band 2) A: Mathematics plus one of Biology, Chemistry or Physics	81.45	N/A
		N	1, 2	3F/6P		N/A	69.35	✓
Medical science research	Bachelor of Biomedical Science (Honours)	G	1	3F [#]	General English (Units 3&4, C) A: Mathematical Methods (Units 3&4, C) plus one of Biology, Chemistry or Physics (Units 3&4, C)	Any two units of English (Band 2) A: Mathematics plus one of Biology, Chemistry or Physics	96.00	N/A

* As a graduate of this degree and our Master of Dentistry, you'll be qualified to work as a registered dentist.

\$ This degree, for applicants who completed secondary studies up to three years before applying and have not attempted tertiary study at diploma level or higher, provides the opportunity for you to progress directly into our Doctor of Medicine, which is an AQF level 9 Masters extended degree.

@ Students may be required to attend lectures at both Gold Coast and Logan campuses.

† Trimester 2 intake is available only to students with one of the following qualifications: Diploma of Health Care (from Griffith College), Diploma of Nursing from an accredited Australian Education Provider and registration as an enrolled nurse with the Australian Health Practitioner Regulation Agency (AHPRA) OR International Registered Nurses.

% To meet the admission requirements for Advanced Standing, applicants must hold a completed Diploma of Nursing, including registration as an enrolled nurse from Australian Health Practitioner Regulation Agency (AHPRA) or be an Endorsed enrolled nurse.

Note. Admission to the Advanced Standing pathway is competitive as the number of applicants generally exceeds the places available. Applicants will be required to complete an additional selection test.

^ Equivalent to 3 years studied in accelerated mode over 2 years.

Equivalent to 4 years studied in accelerated mode over 3 years.

Bachelor of Biomedical Science student Etelini Roberts is aiming to fulfil her dream of becoming a doctor and is happy that she has begun her career pathway at Griffith. Etelini, who is thinking about a career in paediatrics, is aiming to convert to the Doctor of Medicine but says she is 'really loving' the Biomedical Science program. 'It is so hands-on and immersive in the anatomy environment,' she says. 'I am a very visual person in my learning style, so it's great that we have so much practical experience which helps in really embedding the information. The lecturers at Griffith are really helpful and patient in explaining things too.'

Etelini Roberts

Bachelor of Biomedical Science



Music and performing arts

48

Take your talent to the next level at one of Australia's leading schools for musicians and performing artists.

Specialising in fields from popular and classical music to musical theatre and acting, the Queensland Conservatorium has produced some of the country's most recognisable performers—and you could be next.

CAREER OUTCOMES

Stage and screen performer
Vocalist
Musician
Actor
Music producer
Sound engineer
Composer
Music teacher


STUDY AREA / MAJOR	DEGREE	CAMPUS	START TRIMESTER	DURATION	PREREQUISITES		2020	
					QTAC	UAC	ATAR	VET PATHWAYS
Commercial music	Bachelor of Creative Industries	G	1, 2	3F/6P	General English (Units 3&4, C)	Any two units of English (Band 2)	63.15	✓
Drama								
Sound design								
Acting	Bachelor of Acting	S	1	3F	Audition and interview A: English	N/A	N/A	N/A
Classical music	Bachelor of Music	S	1	3F	Audition and interview A: English	N/A	N/A	N/A
Composition								
Popular music								
Instrumental music								
Jazz								
Music production and recording								
Music studies								
Music teaching and education								
Creative music technology								
Opera and voice								
Pedagogy								
Performance								
Acting	Bachelor of Musical Theatre	S	1	3F	Audition and interview A: English	N/A	N/A	N/A
Singing								
Dancing								
Musical theatre	Bachelor of Arts	G, N	1, 2, 3	3F/6P	General English (Units 3&4, C)	Any two units of English (Band 2)	63.15	✓
Drama								
Drama								
Drama	Bachelor of Education (specialising in secondary education)	M	1, 2	3.5F%	General English (Units 3&4, C), General Mathematics, Mathematical Methods or Specialist Mathematics (Units 3&4, C), NARTE [†]	N/A	69.35	✓

* Selection of applicants for the Conservatorium's degrees is based on various requirements, which may include satisfactory results in an audition, interview and presentation of folio. Visit griffith.edu.au/conservatorium-auditions for further information.

% Equivalent to 4 years studied in accelerated mode over 3.5 years.

† See page 32 for additional entry information.

^ Non-Academic Requirements for Teacher Education (NARTE). Applicants must meet both academic and non-academic entry requirements to be eligible for this degree. For further information, please visit the QTAC Teacher entry website: qtac.edu.au/courses---institutions/teacher-entry

A young woman with blonde hair is playing a double bass on stage. She is looking towards the camera with a focused expression. A microphone is positioned in front of her. The background is dark with warm stage lights and bokeh effects.

'The main thing I took away from my musical training at the Con was the importance of having a good work ethic ... I've applied that to everything I've done since graduating.'

She has played alongside Eminem, backed Kate Miller-Heidke and toured the globe with contemporary folk outfit The Maes. She has also taught music in Afghanistan. Monique Clare has mixed it up and made a musical career for herself since graduating from Griffith with a Bachelor of Music. 'The main thing I took away from my musical training at the Con was the importance of having a good work ethic. You practice, you work hard, and it pays off. I've applied that to everything I've done since graduating,' Monique says. At the Queensland Conservatorium, she was selected for the prestigious Australian Youth Orchestra and won the Vada Jefferies Prize for a solo Bach performance. 'To be able to pursue a performance career is a dream come true, and I'm so grateful that it's all panning out.'

Monique Clare
Bachelor of Music

Science

Be equipped to break new ground in a range of important, disruptive fields.

Start your journey towards discovering sustainable solutions in biological, chemical or environmental science—and beyond.

Engage in lab-based learning from early in your degree and have the chance to gain valuable practical experience with local and international industry partners.

CAREER OUTCOMES

Biotechnologist
Chemist
Environmental consultant
Mathematician
Microbiologist
Pharmaceutical scientist
Physicist
Science journalist or teacher
Wildlife biologist

STUDY AREA / MAJOR	DEGREE	CAMPUS	START TRIMESTER	DURATION	PREREQUISITES		2020	
					QTC	UAC	ATAR	VET PATHWAYS
Forensic chemistry					General English (Units 3&4, C) A: Mathematical Methods (Units 3&4, C) R: one of Biology, Chemistry or Physics (Units 3&4, C)			
Forensic molecular biology	Bachelor of Forensic Science	N	1	3F/6P		N/A	63.15	✓
Applied mathematics								
Biochemistry and molecular biology								
Chemistry								
Clinical sciences*	Bachelor of Science	G, N	1, 2, 3	3F/6P	General English (Units 3&4, C) A: General Mathematics or Mathematical Methods (Units 3&4, C) R: one of Biology, Chemistry or Physics (Units 3&4, C)	Any two units of English (Band 2) A: Mathematics General 2 or Mathematics R: One of Biology, Chemistry or Physics	NEW IN 2021	
Geography								
Marine biology [^]								
Microbiology*								
Physics								
Wildlife biology								
Science research (advanced)	Bachelor of Science Advanced (Honours)	G, N	1, 2, 3	4F [@] /8P	General English (Units 3&4, C) A: General Mathematics or Mathematical Methods (Units 3&4, C) R: one of Biology, Chemistry or Physics (Units 3&4, C)	N/A	N/A	N/A
Ecology and conservation								
Environmental management	Bachelor of Environmental Science	G, N	1, 2, 3	3F/6P	General English (Units 3&4, C) A: General Mathematics or Mathematical Methods (Units 3&4, C) R: one of Biology, Chemistry or Physics (Units 3&4, C)	Any two units of English (Band 2) A: Mathematics General 2 or Mathematics R: One of Biology, Chemistry or Physics	63.15	✓
Soil and water science								
Urban environments								
Coastal management ^x								
Coastal oceanography ^x	Bachelor of Marine Science	G	1, 2	3F/6P	General English (Units 3&4, C) A: General Mathematics or Mathematical Methods (Units 3&4, C) R: one of Biology, Chemistry or Physics (Units 3&4, C)	Any two units of English (Band 2) A: Mathematics General 2 or Mathematics R: One of Biology, Chemistry or Physics	66.45	✓
Marine chemistry ^x								
Marine ecology ^x								
Data science and artificial intelligence								
Software development	Bachelor of Computer Science	G	1, 2	3F/6P	General English (Units 3&4, C) A: Mathematical Methods (Units 3&4, C)	Any two units of English (Band 2) A: Mathematics	73.30	✓
Medical science	Bachelor of Biomedical Science	G	1, 2	3F	General English (Units 3&4, C) A: Mathematical Methods (Units 3&4, C) plus one of Biology, Chemistry or Physics (Units 3&4, C)	Any two units of English (Band 2) A: Mathematics plus one of Biology, Chemistry or Physics	81.45	N/A
		N	1, 2	3F		N/A	69.35	✓

STUDY AREA / MAJOR	DEGREE	CAMPUS	START TRIMESTER	DURATION	PREREQUISITES		2020			
					QTAC	UAC	ATAR	VET PATHWAYS		
Medical science research	Bachelor of Biomedical Science (Honours)	G	1	3F*	General English (Units 3&4, C) A: Mathematical Methods (Units 3&4, C) plus one of Biology, Chemistry or Physics (Units 3&4, C)	Any two units of English (Band 2) A: Mathematics plus one of Biology, Chemistry or Physics	96.00	N/A		
Medical laboratory science	Bachelor of Medical Laboratory Science	G	1, 2	4F	General English (Units 3&4, C) A: Mathematical Methods (Units 3&4, C) plus one of Biology, Chemistry or Physics (Units 3&4, C)	Any two units of English (Band 2) A: Mathematics plus one of Biology, Chemistry or Physics	78.10	✓		
Medical science, medicine	Bachelor of Medical Science ^{\$}	G, N	1	2F&	General English (Units 3&4, C) A: Mathematical Methods (Units 3&4, C) plus one of Biology, Chemistry or Physics (Units 3&4, C)	Any two units of English (Band 2) A: Mathematics plus one of Biology, Chemistry or Physics	99.00	N/A		
Health science	Bachelor of Health Science	G	1, 2, 3	3F	General English (Units 3&4, C) A: one of Biology, Chemistry, Physics or Mathematical Methods (Units 3&4, C)	Any two units of English (Band 2) A: one of Biology, Chemistry, Physics or Mathematics	66.45	✓		
Pharmacology and toxicology	Bachelor of Pharmacology and Toxicology	G	1, 2	3F	General English (Units 3&4, C) A: Mathematical Methods or Specialist Mathematics (Units 3&4, C), plus one of Biology, Chemistry or Physics (Units 3&4, C)	Any two units of English (Band 2) A: Mathematics or HSC Mathematics Extension 1 or 2, plus one of Biology, Chemistry or Physics	69.35	✓		
Mathematics education	Bachelor of Education (specialising in primary education)	G, M	1, 2	3.5F%	General English (Units 3&4, C), General Mathematics, Mathematical Methods or Specialist Mathematics (Units 3&4, C), NARTE [†] [^]	Any two units of English (Band 2), Mathematics General 2, Mathematics or HSC Mathematics Extension 1 or 2 (Band 2 or higher), NARTE [†] [^]	69.35	✓		
Science education					Additional entry information: students selecting Primary Education from second year will also need to have completed a science subject (Units 3&4, C) or equivalent.	Additional entry information: students selecting Primary Education from second year will also need to have completed any two units of science (Band 2 or higher).				
Biology	Bachelor of Education (specialising in secondary education)	G, M	1, 2	3.5F%	General English (Units 3&4, C), General Mathematics, Mathematical Methods or Specialist Mathematics (Units 3&4, C), NARTE [†] [^]	Any two units of English (Band 2), Mathematics General 2, Mathematics or HSC Mathematics Extension 1 or 2 (Band 2 or higher), NARTE [†] [^]	69.35	✓		
Chemistry (must be combined with Biology or Mathematics)					Additional entry information: it is recommended that students select teaching areas that they have successfully studied in their senior schooling. In particular, for the Mathematics teaching area: Mathematical Methods or Specialist Mathematics; and for Chemistry, Physics or Biology teaching areas: Chemistry, Physics or Biology respectively.	Additional entry information: it is recommended that students select teaching areas they have successfully studied in their senior schooling. In particular, for the Mathematics teaching area: HSC Mathematics Extension 1 or 2; and for Biology, Chemistry and Physics teaching areas: Biology, Chemistry and Physics respectively.				
Geography [~]										
Mathematics										
Physics (must be combined with Mathematics)										

* Available at Nathan only.

[^] Available at Gold Coast only.

[~] Available at Mt Gravatt only.

^x Available as a minor only.

[%] Equivalent to 4 years studied in accelerated mode over 3.5 years.

[†] See page 32 for additional entry information.

[^] Non-Academic Requirements for Teacher Entry (NARTE). Applicants must meet both academic and non-academic entry requirements to be eligible for this degree.

For further information, please visit the QTAC Teacher entry website: qtac.edu.au/courses---institutions/teacher-entry

[#] Equivalent to 4 years studied in accelerated mode over 3 years.

^{\$} This degree, for applicants who completed secondary studies up to three years before applying and have not attempted tertiary study at diploma level or higher, provides the opportunity for you to progress directly into our Doctor of Medicine, which is an AQF level 9 Master's extended degree.

[@] You can choose to exit with a Bachelor of Science Advanced after your third year or, if eligible depending on your level of achievement, continue into fourth year to graduate with a Bachelor of Science Advanced (Honours).

[&] Equivalent to 3 years studied in accelerated mode over 2 years.

Sport

Help foster active, healthy communities as a physical fitness expert.

As a student of one of Australia's foremost training grounds for sport education, you'll be equipped to meet the evolving challenges facing professionals in fields from exercise science and physiotherapy to business and tourism.

CAREER OUTCOMES

Strength and conditioning coach

Health and physical education teacher

Exercise physiologist

Exercise scientist

Physiotherapist

Team manager

STUDY AREA / MAJOR	DEGREE	CAMPUS	START TRIMESTER	DURATION	PREREQUISITES		2020	
					QTC	UAC	ATAR	VET PATHWAYS
Clinical exercise physiology	Bachelor of Clinical Exercise Physiology	G	1, 2	4F/8P	General English (Units 3&4, C) A: one of Biology, Chemistry, Physics or Mathematical Methods (Units 3&4, C)	Any two units of English (Band 2) A: one of Biology, Chemistry, Physics or Mathematics	78.10	N/A
Exercise science	Bachelor of Exercise Science	G	1, 2, 3	3F/6P	General English (Units 3&4, C) plus one of Biology, Chemistry, Physics or Mathematical Methods (Units 3&4, C)	Any two units of English (Band 2) A: one of Biology, Chemistry, Physics or Mathematics	63.15	✓
Physiotherapy	Bachelor of Physiotherapy	G, N	1	4F	General English (Units 3&4, C) A: Mathematical Methods (Units 3&4, C) plus one of Biology, Chemistry or Physics (Units 3&4, C)	Any two units of English (Band 2), Mathematics plus one of Biology, Chemistry or Physics	97.00	N/A
Psychology	Bachelor of Psychology (Honours)	G	1, 2, 3	4F/8P	General English (Units 3&4, C)	Any two units of English (Band 2)	78.10	✓
		M	1, 2, 3	4F/8P		N/A	78.10	
Sport development	Bachelor of Sport Development	G	1	3F/6P	General English (Units 3&4, C) A: one of Biology, Chemistry, Physics or General Mathematics or Mathematical Methods (Units 3&4, C)	Any two units of English (Band 2) A: one of Biology, Chemistry or Physics, Mathematics General 2 or Mathematics	66.45	✓
Sport management	Bachelor of Business	G, N	1, 2, 3	3F/6P	General English (Units 3&4, C)	Any two units of English (Band 2)	NEW IN 2021	
Sport management	Bachelor of International Tourism and Hotel Management	G, N	1, 2, 3	3F/6P	General English (Units 3&4, C)	Any two units of English (Band 2)	63.15	✓
Health and physical education	Bachelor of Education (specialising in primary education)	G	1, 2	3.5F%	General English (Units 3&4, C), General Mathematics, Mathematical Methods or Specialist Mathematics (Units 3&4, C), NARTE ^{†^} Additional entry information: students selecting Primary Education from second year will also need to have completed a science subject (Units 3&4, C) or equivalent.	Any two units of English (Band 2), Mathematics General 2, Mathematics, or HSC Mathematics Extension 1 or 2 (Band 2 or higher), NARTE ^{†^} Additional entry information: students selecting Primary education from second year will also need to have completed any two units of science (Band 2 or higher).	69.35	✓

‘There has been a lot of support and understanding as I have tried to balance sport, academics and work life.’

STUDY AREA / MAJOR	DEGREE	CAMPUS	START TRIMESTER	DURATION	PREREQUISITES		2020	
					QTAC	UAC	ATAR	VET PATHWAYS
Health and physical education	Bachelor of Education (specialising in secondary education)	M	1, 2	3.5F%	General English (Units 3&4, C), General Mathematics, Mathematical Methods or Specialist Mathematics (Units 3&4, C), NARTE [†] Additional entry information: it is recommended that students select teaching areas that they have successfully studied in their senior schooling. In particular, for the Mathematics teaching area: Mathematical Methods or Specialist Mathematics; and for Biology, Chemistry or Physics teaching areas: Biology, Chemistry or Physics respectively.	N/A	69.35	✓

% Equivalent to 4 years studied in accelerated mode over 3.5 years.

[†] See page 32 for additional entry information.

[^] Non-Academic Requirements for Teacher Entry (NARTE). Applicants must meet both academic and non-academic entry requirements to be eligible for this degree.

For further information, please visit the QTAC Teacher entry website: qtac.edu.au/course---institutions/teacher-entry

Joshua Connolly jumped at the chance to move to the Gold Coast to study a Bachelor of Exercise Science when he was offered a Griffith University Sports Excellence Scholarship. ‘I trained at the track in the morning and then walked 100 metres to my class to attend lessons or a laboratory,’ he says. Joshua is also a Vice Chancellor’s Academic Scholarship holder. Joshua’s goal is to be accepted into a Doctor of Medicine and become a cardiologist. For his practical, he worked in a cardiac centre for two months. ‘There has been a lot of support and understanding as I have tried to balance sport, academics and work life,’ he said.

Joshua Connolly

Bachelor of Exercise Science



Visual arts and design

54

Let your imagination be your guide through a career in creativity.

Develop the skills and confidence to push boundaries and practise your craft anywhere in the world.

Learn from expert professionals in world-class facilities, and underpin your artistic passions with valuable, industry-informed practical lessons and experiences.

CAREER OUTCOMES

Visual artist
Gallery manager or curator
Producer, director or editor
Content creator or copywriter
Graphic designer
Photojournalist or photographer
Filmmaker
Screen agency executive

STUDY AREA / MAJOR	DEGREE	CAMPUS	START TRIMESTER	DURATION	PREREQUISITES		2020	
					QTAC	UAC	ATAR	VET PATHWAYS
Interactive storytelling	Bachelor of Creative Industries	G	1, 2	3F/6P	General English (Units 3&4, C)	Any two units of English (Band 2)	63.15	✓
Digital arts								
Drama								
Music and sound								
Photo media								
Screen development and curation*	Bachelor of Animation	S	1	3F/6P	General English (Units 3&4, C)	N/A	63.15	✓
Animating								
Art direction								
Technical direction	Bachelor of Fine Art	S	1, 2	3F/6P	General English (Units 3&4, C)	N/A	63.15	✓
Digital arts and design*								
Expanded practice								
Advertising photography*								
Photographic art practice								
Documentary photography*	Bachelor of Contemporary Australian Indigenous Art®	S	1, 2	3F/6P	General English (Units 3&4, C), folio and questionnaire	N/A	N/A	N/A
Studio art								
Australian Indigenous art								
Expanded practice								
Photographic art practice								
Documentary photography	Bachelor of Photography	S	1, 2	3F/6P	General English (Units 3&4, C)	N/A	63.15	✓
Expanded practice*								
Photography, fashion and commerce								
Photographic art practice								
Studio art*								
Immersive design	Bachelor of Design	G, S	1, 2, 3	3F/6P	General English (Units 3&4, C)	Any two units of English (Band 2)	63.15	✓
Interaction design								
Interior and spatial design								
Product design								
Visual communication design								

STUDY AREA / MAJOR	DEGREE	CAMPUS	START TRIMESTER	DURATION	PREREQUISITES		2020	
					QTAC	UAC	ATAR	VET PATHWAYS
Digital arts and design Media applications	Bachelor of Creative and Interactive Media	G, N, S	1, 2	3F/6P	General English (Units 3&4, C)	Any two units of English (Band 2)	63.15	✓
Film and TV production	Bachelor of Film and Screen Media Production	S	1	3F/6P	General English (Units 3&4, C)	N/A	66.45	✓
Animating Art direction Computer generated imagery Game audio Player experience	Bachelor of Games Design	S	1	3F/6P	General English (Units 3&4, C)	N/A	63.15	✓
Industrial design	Bachelor of Industrial Design	G	1, 2	3F/6P	General English (Units 3&4, C) A: General Mathematics or Mathematical Methods (Units 3&4, C)	Any two units of English (Band 2) A: Mathematics General 2 or Mathematics	69.35	✓
Creative writing Screen studies	Bachelor of Arts	G, N	1, 2, 3	3F/6P	General English (Units 3&4, C)	Any two units of English (Band 2)	63.15	✓
Design and design technology	Bachelor of Education (specialising in secondary education)	G	1, 2	3.5F%	General English (Units 3&4, C), General Mathematics, Mathematical Methods or Specialist Mathematics (Units 3&4, C), NARTE [†] [^]	Any two units of English (Band 2), Mathematics General 2, Mathematics, or HSC Mathematics Extension 1 or 2 (Band 2 or higher), NARTE [†] [^]	69.35	✓
Visual arts	Bachelor of Education (specialising in secondary education)	M	1, 2	3.5F%	General English (Units 3&4, C), General Mathematics, Mathematical Methods or Specialist Mathematics (Units 3&4, C), NARTE [†] [^]	N/A	69.35	✓
Architecture	Bachelor of Architectural Design [#]	G	1, 2	3F/6P	General English (Units 3&4, C) R: General Mathematics or Mathematical Methods (Units 3&4, C)	Any two units of English (Band 2) R: Mathematics General 2 or Mathematics	69.35	✓

* Available as a minor.

x Available at South Bank only.

@ Entry is open only to those identifying as Aboriginal or Torres Strait Islander.

% Equivalent to 4 years studied in accelerated mode over 3.5 years.

Graduates will be eligible to apply for admission to the Master of Architecture, which provides the academic qualifications needed for accreditation as an architect.


† See page 32 for additional entry information.

[^] Non-Academic Requirements for Teacher Entry (NARTE). Applicants must meet both academic and non-academic entry requirements to be eligible for this degree. For further information, please visit the QTAC Teacher entry website: qtac.edu.au/courses---institutions/teacher-entry

'My time at the QCA helped me develop all the technical skills you need, but most importantly, it taught me how to tell a story with images.'

Katie Fergus
Bachelor of Creative and Interactive Media





'It's not easy studying such varying degrees but each subject you complete is so rewarding.'

Meg Gilles left high school in regional South Australia feeling adrift and with no clear direction for what she wanted to pursue as a career. After making her way to Queensland, Meg focused her interests on completing a Diploma of Justice at TAFE. With the new desire to work in counter-intelligence or cyber-crime—and helping to close the gender gap in the IT industry—she enrolled in the Bachelor of Criminology and Criminal Justice/Bachelor of Information Technology (majoring in Network Security) at Griffith. 'It's not easy studying such varying degrees but each subject you complete is so rewarding,' Meg says. 'Surround yourself with like-minded people and try to get involved in any way you can.'

Meg Gilles

Bachelor Criminology and Criminal Justice/
Bachelor of Information Technology

Double degrees

Double your degree, multiply your opportunities.

Griffith double degrees combine industry-related areas to prepare you for opportunities in a fast-changing world.

You can choose to combine two degrees from associated fields to become a specialist, or degrees from different areas of interest to broaden your career choices. With our extensive range of study areas, you're bound to find a combination that's right for you.

Why choose a double degree?

- **Improve your employment outcomes**—increase your chances of landing the job you want.*
- **Save time and money**—it takes less time to do a double degree than to study both degrees separately, saving you money.
- **Develop a unique skill set**—combine two areas of study and gain an edge in the job market.
- **Follow your passion**—study what you love and complete a professional qualification.
- **Gain two qualifications**—graduate with the skills to work across different levels.
- **Expand your network**—find more opportunities with a diverse network of valuable contacts.

* Source: Graduate Careers Australia

How does it work?

When you study a double degree, you'll complete the two degrees at the same time, usually over four or five years. As a double degree graduate, you'll receive two degree certificates—one for each qualification.

Final year capstone course

In your final year of study, you'll complete a capstone course that will bring together the knowledge and skills you've gained in each component of your double degree.

Hands-on industry experience

Our double degrees include opportunities for industry internships and work placements, so you'll make practical connections within and between each of your areas of study.

Finish faster

With our trimester calendar, you may have the option to complete a double degree in the same length of time as a single degree by taking courses (subject to availability) in every trimester each year.

'I found the level of support quite incredible. My lecturers and tutors were great and made me feel like I was part of the team.'

Natalja Nabinger de Diaz
Bachelor of Psychological Science/
Bachelor of Criminology and Criminal Justice



Double degrees

You'll find prerequisites for specific double degrees at griffith.edu.au/degrees

58

STUDY AREA	DOUBLE DEGREES	CAMPUS	START TRIMESTER	DURATION	ATAR	VET PATHWAYS
Arts	Arts/Business	G, N	1, 2, 3	4F/8P	63.15	✓
	Laws (Honours)/Arts	G, N	1, 2	5.5F/8P	83.65	N/A
	Science/Arts	G, N	1, 2	4F/8P	63.15	✓
Aviation	Aviation/Information Technology	N	1	4F*/8P	63.15	N/A
	Engineering (Honours)/Aviation	N	1	4F*	69.35	✓
Business	Arts/Business	G, N	1, 2, 3	4F/8P	63.15	✓
	Business/Data Science	G, N	1, 2, 3	4F/8P	66.45	✓
	Business/Government and International Relations	G, N	1, 2, 3	4F/8P	63.15	✓
	Communication and Journalism/Business	G, N	1	4F/8P	63.15	✓
	Creative and Interactive Media/Business	G, N, S	1, 2	4F/8P	63.15	✓
	Design/Business	G, N, S	1, 2, 3	4F/8P	63.15	✓
	Engineering (Honours)/Business	G	1, 2	5F/10P	73.30	✓
		N	1, 2	5F/10P	69.35	✓
	Environmental Science/Business	G, N	1, 2, 3	4F/8P	63.15	✓
	Exercise Science/Business	G	1, 2, 3	4.5F/9P	63.15	✓
	Fine Art/Business	N, S	1, 2	4F/8P	63.15	✓
	Information Technology/Business	G, N	1, 2, 3	4F/8P	63.15	✓
	International Tourism and Hotel Management/Business	G, N	1, 2, 3	4F/8P	63.15	✓
	Laws (Honours)/Business	G, N	1, 2	5.5F/8P	83.65	N/A
	Photography/Business	N, S	1, 2	4F/8P	63.15	✓
	Psychological Science/Business	G, M, N	1, 2, 3	4F/8P	66.45	✓
	Science/Business	G, N	1, 2, 3	4F/8P	63.15	✓
	Sport Development/Business	G	1, 2	4F/8P	66.45	N/A
	Communication and Journalism/Business	G, N	1	4F/8P	63.15	✓
Communication	Communication and Journalism/Government and International Relations	G, N	1	4F/8P	63.15	N/A
	Communication and Journalism/Science	G, N	1	4F/8P	63.15	N/A
Computer science	Engineering (Honours)/Computer Science	G	1, 2	5F/10P	73.30	✓
Creative and interactive media	Creative and Interactive Media/Business	G, N, S	1, 2	4F/8P	63.15	✓
Criminology and criminal justice	Criminology and Criminal Justice/Information Technology	G, M, N	1, 2	4F/8P	63.15	✓
	Forensic Science/Criminology and Criminal Justice	N	1	4F/8P	63.15	✓
	Government and International Relations/Criminology and Criminal Justice	G, M, N	1, 2	4F/8P	63.15	✓
	Human Services/Criminology and Criminal Justice	G, L, M, O	1, 2	4F/8P	66.45	✓
	Laws (Honours)/Criminology and Criminal Justice	G, M	1, 2	5.5F/8P	83.65	N/A
	Psychological Science/Criminology and Criminal Justice	G, M	1, 2	4F/8P	66.45	✓
Data science	Business/Data Science	G, N	1, 2, 3	4F/8P	66.45	✓
	Engineering (Honours)/Data Science	G, N	1	5F	73.30	✓
	Environmental Science/Data Science	G, N	1	4F/8P	66.45	✓
	Science/Data Science	G, N	1	4F/8P	66.45	✓
Dental prosthetics	Dental Technology/Dental Prosthetics	G	1	4F	81.45	N/A
Dental technology	Dental Technology/Dental Prosthetics	G	1	4F	81.45	N/A
Design	Design/Business	G, N, S	1, 2, 3	4F/8P	63.15	✓
Engineering	Engineering (Honours)/Aviation	N	1	4F*	69.35	✓
	Engineering (Honours)/Business	G	1, 2	5F/10P	73.30	✓
		N	1, 2	5F/10P	69.35	✓
	Engineering (Honours)/Computer Science	G	1, 2	5F/10P	73.30	✓
	Engineering (Honours)/Data Science	G, N	1	5F	73.30	✓
	Engineering (Honours)/Environmental Science	G	1, 2	5F/10P	73.30	✓
		N	1, 2	5F/10P	69.35	✓
	Engineering (Honours)/Industrial Design	G	1, 2	5F/10P	73.30	✓
	Engineering (Honours)/Information Technology	G	1, 2	5F/10P	73.30	✓
		N	1, 2	5F/10P	69.35	✓
	Engineering (Honours)/Science	G	1, 2	5F/10P	73.30	✓
		N	1, 2	5F/10P	69.35	✓

STUDY AREA	DOUBLE DEGREES	CAMPUS	START TRIMESTER	DURATION	ATAR	VET PATHWAYS
Environmental science	Engineering (Honours)/Environmental Science	G	1, 2	5F/10P	73.30	✓
		N	1, 2	5F/10P	69.35	✓
	Environmental Science/Business	G, N	1, 2, 3	4F/8P	63.15	✓
	Environmental Science/Data Science	G, N	1	4F/8P	66.45	✓
	Laws (Honours)/Environmental Science	G, N	1, 2	5.5F/8P	83.65	N/A
Exercise science	Exercise Science/Business	G	1, 2, 3	4.5F/9P	63.15	✓
	Exercise Science/Psychological Science	G	1, 2, 3	4.5F/9P	66.45	✓
Fine art	Fine Art/Business	N, S	1, 2	4F/8P	63.15	✓
Forensic science	Forensic Science/Criminology and Criminal Justice	N	1	4F/8P	63.15	✓
Government and international relations	Business/Government and International Relations	G, N	1, 2, 3	4F/8P	63.15	✓
	Communication and Journalism/Government and International Relations	G, N	1	4F/8P	63.15	N/A
	Government and International Relations/Criminology and Criminal Justice	G, M, N	1, 2	4F/8P	63.15	✓
	Laws (Honours)/Government and International Relations	G, N	1, 2	5.5F/8P	83.65	N/A
Human services	Human Services/Criminology and Criminal Justice	G, L, M, O	1, 2	4F/8P	66.45	✓
Industrial design	Engineering (Honours)/Industrial Design	G	1, 2	5F/10P	73.30	✓
Information technology	Aviation/Information Technology	N	1	4F*/8P	63.15	N/A
	Criminology and Criminal Justice/Information Technology	G, M, N	1, 2	4F/8P	63.15	✓
	Engineering (Honours)/Information Technology	G	1, 2	5F/10P	73.30	✓
		N	1, 2	5F/10P	69.35	✓
	Information Technology/Business	G, N	1, 2, 3	4F/8P	63.15	✓
	Science/Information Technology	G, N	1, 2, 3	4F/8P	63.15	✓
International tourism and hotel management	International Tourism and Hotel Management/Business	G, N	1, 2, 3	4F/8P	63.15	✓
Laws	Laws (Honours)/Arts	G, N	1, 2	5.5F/8P	83.65	N/A
	Laws (Honours)/Business	G, N	1, 2	5.5F/8P	83.65	N/A
	Laws (Honours)/Criminology and Criminal Justice	G, M	1, 2	5.5F/8P	83.65	N/A
	Laws (Honours)/Environmental Science	G, N	1, 2	5.5F/8P	83.65	N/A
	Laws (Honours)/Government and International Relations	G, N	1, 2	5.5F/8P	83.65	N/A
	Laws (Honours)/Psychological Science	G, M	1, 2	5.5F/8P	83.65	N/A
Mental health practice	Psychological Science/Master of Mental Health Practice	G	1	4F	66.45	N/A
Nursing	Nursing/Graduate Certificate in Paediatric Nursing	N, O	1	3F+1P	81.45	N/A
	Nursing/Graduate Certificate in Paediatric Nursing (Advanced Standing Entry)	N, O	1	2F+1P	N/A	N/A
Photography	Photography/Business	N, S	1, 2	4F/8P	63.15	✓
Psychological science	Exercise Science/Psychological Science	G	1, 2, 3	4.5F/9P	66.45	✓
	Laws (Honours)/Psychological Science	G, M	1, 2	5.5F/8P	83.65	N/A
	Psychological Science/Business	G, M, N	1, 2, 3	4F/8P	66.45	✓
	Psychological Science/Criminology and Criminal Justice	G, M	1, 2	4F/8P	66.45	✓
	Psychological Science/Master of Mental Health Practice	G	1	4F	66.45	N/A
Rehabilitation counselling	Psychological Science/Master of Rehabilitation Counselling	G, L, O	1	4F	66.45	N/A
	Psychological Science/Master of Rehabilitation Counselling	G, L, O	1	4F	66.45	N/A
	Communication and Journalism/Science	G, N	1	4F/8P	63.15	N/A
Science	Engineering (Honours)/Science	G	1, 2	5F/10P	73.30	✓
		N	1, 2	5F/10P	69.35	✓
	Science/Arts	G, N	1, 2	4F/8P	63.15	✓
	Science/Business	G, N	1, 2, 3	4F/8P	63.15	✓
	Science/Data Science	G, N	1	4F/8P	66.45	✓
	Science/Information Technology	G, N	1, 2, 3	4F/8P	63.15	✓
	Urban and Environmental Planning/Science	G, N	1, 2	5F/10P	63.15	✓
Sport development	Sport Development/Business	G	1, 2	4F/8P	66.45	N/A
Urban and environmental planning	Urban and Environmental Planning/Science	G, N	1, 2	5F/10P	63.15	✓

* This degree is offered in accelerated mode only and includes Trimester 3. There will be no breaks between trimesters for the duration of the degree.



How to apply

Here are the key steps and important things to know about applying to study at Griffith. These will guide you in applying for our undergraduate degrees.

01

Choose your degree

Browse the degrees section in this guide starting on page 26.

Our website has more detailed information once you have an idea of which areas interest you.

Visit griffith.edu.au/degrees

If you have any questions, call us on **1800 677 728** and talk to our study advisers.

02

Apply

You will need to meet admission requirements to apply for Griffith undergraduate degrees.

Please check griffith.edu.au/degrees

Lodge your application at qtac.edu.au or uac.edu.au

Some applicants may apply directly to the university as part of a specific scheme or pathway.

Please note that application processing can take a few weeks.

See page 62 for more information.

03

Receive your offer

If you are successful in receiving an offer through QTAC or UAC, you will be sent a Notice of Offer via email.

This gives you important information, including whether you must enrol within the response timeframe to secure your place.

If you have applied directly to Griffith, you will receive your Starting@Griffith enrolment link.

Congratulations on receiving an offer!

04

Accept your offer

QTAC—QTAC applicants must respond to their offer in the QTAC system usually within five days. The QTAC website includes additional information on how to respond to your offer. For some degrees, you will also need to enrol to secure your place.

UAC—To accept an offer from UAC, applicants must enrol within the specified timeframe.

Direct from Griffith—Applicants who have received an offer directly from Griffith are required to enrol within the specified timeframe to accept their offer.

05

Enrol and get ready to learn

Soon after receiving notification of your offer, Griffith will email you your Starting@Griffith enrolment link, which provides information on orientation, how to enrol and details of your offer.

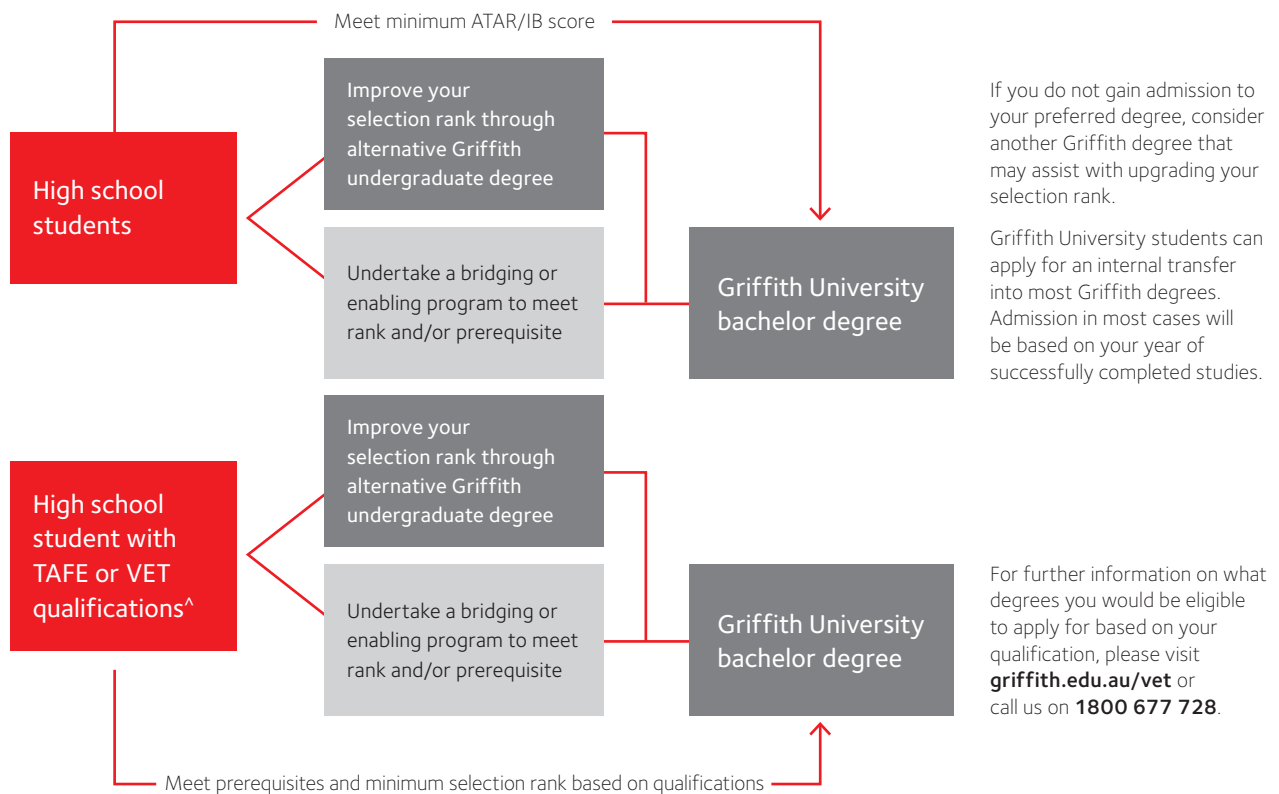
You must also enrol in classes within the timeframe to secure your place. As a Griffith student, you will have access to all the information you need via MyGriffith.

For more information on the application process, please visit griffith.edu.au/apply

Important things to know about applying to study at Griffith

This information relates to the following applicant types applying to study at Griffith University:

- Australian citizens
- Australian Permanent Residents (holders of all categories of permanent resident visas, including humanitarian visas)
- New Zealand citizens.



[^] Not all TAFE/VET qualifications meet subject prerequisites.

Things to consider when choosing the correct pathway can depend on your prior knowledge, how comfortable you are in the study level, and for which degree you are applying. The above advice may not apply for competitive degrees. If undertaking other studies to upgrade, then it is important that you receive the right advice prior to commencing, to ensure that the study will meet your requirements.

Admissions pathways

If you have not met the admission requirements through your high school studies, there are other admission pathways that can help you upgrade to your preferred degree, or to satisfy subject prerequisites. For more information, visit griffith.edu.au/pathways

Eligibility

Subject prerequisites

All Griffith degrees have English as a subject prerequisite. This is achieved through completing a General English subject (including English, English as an Additional Language, Literature or English & Literature Extension) in years 11 and 12 with a minimum grade of C in Units 3 & 4, or equivalent. Some of our degrees have additional prerequisites. If you have not met the prerequisite requirements for a degree, you may be able to complete a bridging course.

To check that your study meets the prerequisite requirement, or to find a suitable bridging course, visit griffith.edu.au/prerequisites-assumed-knowledge

You can also look for other degrees that may provide a pathway to your preferred degree. For more information, visit griffith.edu.au/pathways

Merit

Eligible Year 12 students in Queensland receive an Australian Tertiary Admission Rank (ATAR) based on their performance in senior secondary school subjects. Some high schools also offer the Diploma of the International Baccalaureate (IB) program.

Assumed knowledge

Some degrees assume you have studied certain subjects at school (or equivalent studies) and that you'll be able to build on this knowledge at university. If you haven't completed these subjects or do not have the recommended level of prior knowledge, you may still be made an offer. However, if you want to gain this knowledge, you can take one of our bridging courses.

Recommended studies

Recommended studies are listed to encourage applicants to consider these foundational content areas. However, they are not as crucial as assumed knowledge. If you haven't studied these subjects, or their equivalent, and want to gain this knowledge, you can take one of our bridging courses.

Adjustment factor pathways

Adjustment factor pathways can improve your chances of getting into your preferred degree by recognising your academic achievements or personal circumstances. Our adjustment factor pathways include the Gold Coast and Logan Priority Access Pathway, Education Access Scheme (EAS), Elite Athlete Adjustment Factors and Year 12 Subject Adjustment Pathway. The maximum adjustments that you can receive under all pathways is capped at eight (8). See page 19 for more information, or visit griffith.edu.au/adjustment-factor-pathways

Experience

Some degrees, in particular those offered at the Queensland Conservatorium, require applicants to attend an audition. Education degrees require applicants to submit a Teaching Personal Statement. You can find specific information about these requirements at griffith.edu.au/degrees

English language requirements

If your previous study was undertaken in a language other than English, or completed outside Australia, you may need to demonstrate your level of reading, writing and comprehension of English. The English language proficiency requirements vary between degrees and are listed on our degree and career finder at griffith.edu.au/degrees

Guaranteed Admission Scheme

To provide more opportunities for students from a range of backgrounds, the Guaranteed Admission Scheme includes guaranteed admission for ATAR 80+ students, ATAR 90+ students, and those who have completed a VET qualification. Open to school leavers as well as mature students, the Guaranteed Admission Scheme is our way of giving you more certainty about your future study choices. For more information, visit griffith.edu.au/guaranteed-admission

Offer timing

QTAC and UAC offers

Year 12 students may receive an offer as soon as results are released in December, which can assist with organising accommodation, changing preferences or seeking other admission pathways. Most degrees will participate in the December round. Offers to a small number of degrees are made only during the mid-January offer round. This means you must wait until this date before you receive an offer. To check degrees and their offer round dates, visit qtac.edu.au and uac.edu.au

Student accommodation

If you're thinking of living on-campus, or off-campus with one of our preferred providers, submit your application as soon as possible. Accommodation offers are based on distance from the University and time of application. Successful applicants will be notified after QTAC and UAC offers are made. For more information, visit griffith.edu.au/accommodation

Costs

You can find indicative fees for specific degrees via our study website. Domestic students studying an undergraduate degree may be eligible for a Commonwealth Supported Place. This means you pay a student contribution for your degree, with most of the cost covered by the Australian Government, through the HECS-HELP scheme. For more information, visit griffith.edu.au/students/enrolment-timetables-fees/paying-your-fees

2020 Student contribution bands

BANDS AND DISCIPLINES IN EACH BAND	AMOUNT (PER EFTSL [^])
Band 1: Humanities, Behavioural Science, Social Studies, Education*, Clinical Psychology, Foreign Languages, Visual and Performing Arts, Nursing*	\$6,684
Band 2: Mathematics, Statistics, Computing, Built Environment, Other Health, Allied Health, Science, Engineering, Surveying, Agriculture	\$9,527
Band 3: Law, Accounting, Administration, Economics, Commerce, Dentistry, Medicine, Veterinary Science	\$11,155

* Students considered as pre-2010 will be charged for Education and Nursing at the rate of \$5,348 per EFTSL.

[^] One EFTSL is equivalent to a full-time study load for one year, which for a standard undergraduate degree is 80 credit points or 8 x 10-credit courses.

Application options

Deferment

Deferment allows you to delay the start of your studies while still securing your offer. Deferment is not available for all degrees, and cannot exceed 12 months. You can request to defer after you receive an offer by selecting the deferment option when you respond to your QTAC offer. For UAC, you can email deferred@griffith.edu.au to request deferment.

Internal transfer

Once you have been admitted to Griffith, some degrees give you the option of applying for an internal transfer to another degree. For more information, visit griffith.edu.au/apply/internal-transfer

Griffith College

Located at Mt Gravatt and Gold Coast campuses, Griffith College is your pathway to successful further study.

Another way to uni

After completing a Griffith College diploma, you'll be eligible for entry to second year* of a Griffith University bachelor degree. Griffith College programs are equivalent to university-level study, and you'll learn in a supportive environment, which means you'll be prepared for success in your bachelor degree and lose no time graduating.

Fast-track your studies

With our flexible trimester system, you can study the equivalent of the first year of university in only eight months and progress* to your bachelor degree sooner.

A supportive learning environment

With small class sizes, opportunities for interaction with your teachers, study skills workshops and peer support, Griffith College will help you achieve your best.

On campus from day one

Situated at the Gold Coast and Mt Gravatt campuses, Griffith College gives you access to university facilities so you can become part of the Griffith community from day one.

Progress to second-year university

The College offers 11 diploma programs providing access to the second year* of a wide range of Griffith bachelor degrees across diverse study areas such as arts, commerce, hotel management, psychology, IT, science, nursing, health sciences, engineering, criminology and design, over two trimesters.

For information on Griffith College fees, entry requirements and credit transfer, visit griffith.edu.au/college

Foundation Program

Griffith College also offers a Foundation Program, which is a bridging course for students who didn't finish senior studies in high school. You'll be trained in the knowledge and skills needed for successful university study and gain the prerequisites for specific Griffith University degrees. Griffith College Foundation Program graduates are eligible to apply for many Griffith College diplomas and Griffith University degrees via direct application.

* Entry into second year is dependent on successfully completing the Griffith College program and meeting degree admission requirements. In their second or third year of the degree, students must complete any first-year core courses for which credit transfer has not been granted.

'I am glad that I studied at the College first because I have learnt so many skills and had so much support.'

Serena Herr
Diploma of Arts and Communication



These Griffith College programs...	...can provide entry to these Griffith University pathway bachelor degrees with credit	Credit awarded	Degree duration
Associate Degree in Commerce and Business Specialisations: Accounting, Finance, Human Resource Management, International Tourism and Hotel Management, Management	Business*	160CP	1F
	International Tourism and Hotel Management*	150–160CP	1F
Diploma of Arts and Communication	Arts*	80CP	2F
	Communication and Journalism	70/80CP^	2–2.5F
	Communication and Journalism/Business	60CP	3.5F
	Aviation Management	40/50CP	2F
	Business	80CP	2F
Diploma of Commerce	Government and International Relations	60–70CP	2.5F
	International Tourism and Hotel Management	80CP	2F
	Communication and Journalism/Business	70CP	3.5F
	Design/Business	70CP	3.5F
Diploma of Criminology and Criminal Justice	Criminology and Criminal Justice	80CP	2F
	Laws (Honours)/Criminology and Criminal Justice	80CP	4.5F
	Architectural Design	30CP	3F
	Creative and Interactive Media	50CP	2.5–3F
Diploma of Design	Design	80CP	2F
	Fine Art	40CP	3F
	Photography	40CP	3F
	Design/Business	50/60CP^	3.5F
Diploma of Engineering	Engineering (Honours)	70–80CP	3–3.5F
	Engineering Technology in Electronic and Computing Engineering	70/80CP^	2.5F
	Industrial Design	30CP	3F
	Engineering (Honours)/Aviation	70CP	4F
Diploma of Health Care	Nursing	80CP	2F (T1 entry), 2.5F (T2 entry)
	Biomedical Science (Nathan)	70CP	2.5F
	Biomedical Science (Gold Coast)	80CP	2F
	Exercise Science	70CP	2.5F
	Health Science	80CP	2F
	Medical Laboratory Science	80CP	3.5F
	Nutrition and Dietetics	80CP	3F
Diploma of Health Sciences	Occupational Therapy	50CP	4F
	Paramedicine	40CP	2.5F
	Pharmacology and Toxicology	60/70CP#	2.5F
	Pharmacy	60CP	4F
	Physiotherapy	40CP	4F
	Science	60–80CP	2.5–3F
	Sport Development	60/70CP#	3F
	Business	80CP	2F
Diploma of Hotel Management	Government and International Relations	70/80CP	2.5F
	International Tourism and Hotel Management	80CP	2F
Diploma of Information Technology	Computer Science	20CP	3F
	Creative and Interactive Media	50CP	2.5F
	Intelligent Digital Technologies	60/70	3F
	Information Technology	80CP	2F
	Biomedical Science (Nathan)	80CP	2F
	Biomedical Science (Gold Coast)	60CP	2.5F
	Environmental Science	80CP	2F
Diploma of Science	Forensic Science	60/70CP^	2.5F
	Marine Science	50–80CP	3F
	Science/Data Science	60/70CP	3–3.5F
	Science*	70–80CP	2F
Diploma of Social and Psychological Science	Child, Youth and Family Practice	80CP	2F
	Counselling	70/80CP#	2.5F
	Human Services	80CP	2F
	Psychological Science	80CP	2F
	Social Work	80CP	2F
All Griffith College diplomas	Laws (Honours)	40CP	4F

* Maximum credit applies to specific majors/minors only.

^ Lower amount for international students required to complete the English Language Enhancement Course.

Lower amount for all students not required to complete the English Language Enhancement Course.

Be supported

We offer support services to help you feel confident and succeed in your degree.

Orientation

To help you get settled into university life, we hold Orientation Week, or O-Week, the week before each trimester starts. You'll meet other students, get familiar with our campuses, and have the chance to sign up for clubs and societies. As well as practical tours and information sessions, O-Week includes fun activities and social events, plus live music, food stalls and giveaways.

For more information, visit griffith.edu.au/orientation

Learning support services

Our libraries are the perfect place to study, providing spaces that are adaptable and comfortable. You can access services and resources, meet up for group study or find a space for individual work. In all our libraries we provide computers for study, laptops you can borrow, or you can connect your own device to Griffith Wi-Fi.

Participate in our Earlybird workshops or upskill at your own pace with the libraries' study modules designed to develop your academic, digital and library research skills. For more information, visit griffith.edu.au/library/study

Peer Assisted Study Sessions

You can access Peer Assisted Study Sessions (PASS) for a wide range of courses. PASS is facilitated by student leaders who have previously completed the course and achieved excellent results. Participating in PASS will help you improve your grades, better understand course content, break down complex ideas and could even save you hours with smarter study methods. For further information, visit griffith.edu.au/students/peer-assisted-study-sessions

Peer mentoring

At Griffith, successful continuing students provide commencing students with assistance to settle into university. These students are called peer mentors. Mentors help students get to know other students and staff, and understand the services available. For more information, visit griffith.edu.au/student-mentoring/mentoring-programs

International students

If you're from a non-English speaking background, you can improve your skills through EnglishHELP (English Higher Education Language Program). This free service offers individual support to help you build confidence with speaking and listening, improve your knowledge of grammar and your pronunciation, and learn to write academic reports. Explore EnglishHELP's free online resources at griffith.edu.au/englishhelp

You'll also have access to our International Student Advisors, who offer personal support and can help you with study-related issues. For more information, visit griffith.edu.au/international-student-advisors

Transport, parking and childcare

Our campuses have easy-to-access public transport and parking. For more information, visit griffith.edu.au/parking

Nathan campus provides two childcare centres offering quality education and care for children from three months of age to five years. For more information, visit griffith.edu.au/childcare or email childcare@griffith.edu.au

Childcare facilities are also available close to the Logan, Mt Gravatt, Gold Coast, and South Bank campuses. These centres can be found on the mychild.gov.au website.

Personal support services

You can get the help you need to manage your life while you're at university. All students have access to a range of personal support services and programs including:

- counselling, to help you when you need support with issues such as the transition from school, study, motivation, relationships, self-esteem, grief and loss, anxiety and stress
- job search and career development to build employability skills
- health services, such as bulk-billed medical consultations, specialist appointments, free nursing consultations and health information
- transition and support services for students from educationally disadvantaged backgrounds
- specialised support for students with disabilities
- chaplaincy, where you can discuss life's challenges, explore spirituality, faith and social justice issues and meet other people interested in religious matters
- student financial support services for help with issues such as student loans, Centrelink payments and budgeting
- personal development programs to grow skills for life and study (resilience, adaptability, financial literacy, etc.).

You can access our services and programs in person, by phone or online. For more information, visit griffith.edu.au/student-services

Find a place to live

Griffith Accommodation and a range of private providers offer on-campus accommodation at most of our campuses. Living on campus provides the opportunity to join a diverse international community, access university facilities and academic support, and make lifelong friends.

If you'd prefer a little more space between where you learn and where you live, Griffith also offers Homestay accommodation where students live with Australian families in a safe, culturally sensitive environment.

Griffith Accommodation offers a preferred partnership program with a selection of off-campus accommodation providers close to all campuses in Brisbane and the Gold Coast. To be a part of the partnership program, all providers must pass the University's rigorous quality and safety standards.

Most of our partners offer discount rates on select room types for students, provided you apply through the Griffith University accommodation website. If you apply directly with the accommodation provider, you will not be able to receive the discounted rate.

For more information, visit griffith.edu.au/accommodation

Students with disabilities

We provide disability support services on all campuses. These services, coordinated through our Student Services office, enable students with disabilities to access and participate in our learning environment. Support includes:

- coordination of Auslan interpreters
- modifications to physical environments
- negotiation of reasonable adjustments for study and examinations
- access to assistive technology arrangements for required readings to be converted to accessible formats.

Future students should contact the Student Disability and Accessibility Service:

Phone: +61 (0)7 3735 7470

Email: disability@griffith.edu.au

If you are deaf or hard of hearing, you can contact the Disabilities Service Officer directly on:

Phone: +61 (0)408 987 639

Email: deafstudentsupportprogram@griffith.edu.au



When Kaustubh Mamdya graduated with a Bachelor of Business he scored a prized job within the Department of Defence. Kaustubh credits the amazing array of student opportunities on offer for preparing him to enter the workforce: 'I wouldn't have gotten the job without all those incredible extracurricular activities that are available at Griffith University.' One of the main extracurricular activities that gave him a leg up was the Griffith Business School Student Leadership Program. 'You will find a lot of people aren't able to keep up with uni because they don't have support,' Kaustubh explains. The leadership program provides a level of support and the skills to get ahead. 'It gives you the chance to network and to make friends, even just sheer confidence in work and uni situations,' he says.

Kaustubh Mamdya
Bachelor of Business

Index

68

Degree or program	Page
Associate Degree in Commerce and Business	65
Bachelor of Acting	27, 48
Bachelor of Advanced Business (Honours)	10, 26, 30, 35, 40
Bachelor of Animation	27, 54
Bachelor of Applied Financial Advice	26, 30
Bachelor of Applied Information Technology	26, 38
Bachelor of Architectural Design	26, 28, 55
Bachelor of Arts	10, 26, 27, 31, 35, 36, 40, 41, 45, 48, 55
Bachelor of Arts/Bachelor of Business	58
Bachelor of Aviation	26, 29
Bachelor of Aviation Management	26, 29, 31
Bachelor of Aviation/Bachelor of Information Technology	58, 59
Bachelor of Biomedical Science	11, 27, 44, 47, 50, 51
Bachelor of Biomedical Science (Honours)	44, 47, 51
Bachelor of Business	4, 10, 12, 28, 30, 31, 34, 35, 37, 40, 52, 67
Bachelor of Business Innovation	26, 31
Bachelor of Business/Bachelor of Data Science	58
Bachelor of Business/Bachelor of Government and International Relations	58, 59
Bachelor of Child, Youth and Family Practice	27, 45
Bachelor of Clinical Exercise Physiology	27, 42, 52
Bachelor of Communication and Journalism	26, 31, 34, 36
Bachelor of Communication and Journalism/Bachelor of Business	58
Bachelor of Communication and Journalism/Bachelor of Government and International Relations	58, 59
Bachelor of Communication and Journalism/Bachelor of Science	58, 59
Bachelor of Computer Science	26, 27, 33, 38, 50
Bachelor of Construction Management (Honours)	26, 28
Bachelor of Contemporary Australian Indigenous Art	19, 27, 54
Bachelor of Counselling	27, 45
Bachelor of Creative and Interactive Media	27, 39, 55
Bachelor of Creative and Interactive Media/Bachelor of Business	58
Bachelor of Creative Industries	26, 36, 48, 54
Bachelor of Criminology and Criminal Justice	27, 41
Bachelor of Criminology and Criminal Justice/Bachelor of Information Technology	56, 58, 59
Bachelor of Dental Health Science	19, 27, 46
Bachelor of Dental Hygiene	19, 27, 46
Bachelor of Dental Prosthetics	19, 27, 46
Bachelor of Dental Technology	19, 27, 46
Bachelor of Dental Technology/Bachelor of Dental Prosthetics	19, 58
Bachelor of Design	27, 28, 54
Bachelor of Design/Bachelor of Business	13, 58
Bachelor of Education (specialising in primary education)	26, 32, 51, 52
Bachelor of Education (specialising in secondary education)	26, 32, 37, 39, 45, 48, 51, 53, 55
Bachelor of Engineering (Honours)	26, 28, 33, 34, 38
Bachelor of Engineering (Honours)/Bachelor of Aviation	58
Bachelor of Engineering (Honours)/Bachelor of Business	58
Bachelor of Engineering (Honours)/Bachelor of Computer Science	58
Bachelor of Engineering (Honours)/Bachelor of Data Science	58
Bachelor of Engineering (Honours)/Bachelor of Environmental Science	58, 59
Bachelor of Engineering (Honours)/Bachelor of Industrial Design	58, 59
Bachelor of Engineering (Honours)/Bachelor of Information Technology	58, 59
Bachelor of Engineering (Honours)/Bachelor of Science	58, 59
Bachelor of Engineering Technology in Electronic and Computer Engineering	26, 33, 39
Bachelor of Environmental Science	15, 27, 28, 34, 50
Bachelor of Environmental Science/Bachelor of Business	58, 59
Bachelor of Environmental Science/Bachelor of Data Science	58, 59
Bachelor of Exercise Science	27, 42, 52, 53
Bachelor of Exercise Science/Bachelor of Business	58, 59
Bachelor of Exercise Science/Bachelor of Psychological Science	59
Bachelor of Film and Screen Media Production	27, 55
Bachelor of Fine Art	27, 54
Bachelor of Fine Art/Bachelor of Business	58, 59
Bachelor of Forensic Science	27, 50
Bachelor of Forensic Science/Bachelor of Criminology and Criminal Justice	58, 59
Bachelor of Games Design	27, 39, 55
Bachelor of Government and International Relations	10, 26, 27, 35, 37, 40
Bachelor of Government and International Relations/ Bachelor of Criminology and Criminal Justice	58, 59
Bachelor of Health Science	27, 44, 51
Bachelor of Human Services	27, 45
Bachelor of Human Services/Bachelor of Criminology and Criminal Justice	58, 59
Bachelor of Industrial Design	27, 28, 33, 55
Bachelor of Information Technology	26, 38
Bachelor of Information Technology/Bachelor of Business	58, 59
Bachelor of Intelligent Digital Technologies	26, 38
Bachelor of International Tourism and Hotel Management	26, 27, 28, 30, 52
Bachelor of International Tourism and Hotel Management/ Bachelor of Business	58, 59
Bachelor of Languages and Linguistics	10, 27, 40
Bachelor of Laws (Honours)	27, 41
Bachelor of Laws (Honours)/Bachelor of Arts	58, 59
Bachelor of Laws (Honours)/Bachelor of Business	58, 59
Bachelor of Laws (Honours)/Bachelor of Criminology and Criminal Justice	58, 59
Bachelor of Laws (Honours)/Bachelor of Environmental Science	59
Bachelor of Laws (Honours)/Bachelor of Government and International Relations	59
Bachelor of Laws (Honours)/Bachelor of Psychological Science	59
Bachelor of Marine Science	26, 27, 34, 50
Bachelor of Medical Laboratory Science	27, 44, 51
Bachelor of Medical Science	19, 27, 46, 51
Bachelor of Midwifery	19, 27, 46
Bachelor of Music	27, 48, 49
Bachelor of Musical Theatre	27, 48
Bachelor of Nursing	27, 46
Bachelor of Nursing/Graduate Certificate in Paediatric Nursing	19, 59
Bachelor of Nursing (Advanced Standing)	19, 46
Bachelor of Nursing (Advanced Standing)/Graduate Certificate in Paediatric Nursing	19, 59
Bachelor of Nutrition and Dietetics	27, 42
Bachelor of Nutrition and Dietetics (graduate entry)	42
Bachelor of Occupational Therapy	19, 27, 42
Bachelor of Paramedicine	19, 27, 47
Bachelor of Pharmacology and Toxicology	25, 27, 44, 47, 51
Bachelor of Pharmacy	27, 46
Bachelor of Photography	27, 54
Bachelor of Photography/Bachelor of Business	58, 59
Bachelor of Physiotherapy	19, 27, 42, 52
Bachelor of Psychological Science	27, 45
Bachelor of Psychological Science/Bachelor of Business	24, 58, 59
Bachelor of Psychological Science/Bachelor of Criminology and Criminal Justice	58, 59
Bachelor of Psychological Science/Master of Mental Health Practice	59
Bachelor of Psychological Science/Master of Rehabilitation Counselling	59
Bachelor of Psychology (Honours)	27, 45, 52
Bachelor of Public Health	27, 47
Bachelor of Science	27, 34, 44, 50
Bachelor of Science Advanced (Honours)	27, 34, 50
Bachelor of Science/Bachelor of Arts	58, 59
Bachelor of Science/Bachelor of Business	58, 59
Bachelor of Science/Bachelor of Data Science	58, 59
Bachelor of Science/Bachelor of Information Technology	39, 59
Bachelor of Social Science	26, 27, 35, 36, 41, 45
Bachelor of Social Work	27, 45
Bachelor of Sport Development	27, 42, 43, 52
Bachelor of Sport Development/Bachelor of Business	58, 59
Bachelor of Urban and Environmental Planning	26, 28, 34
Bachelor of Urban and Environmental Planning/Bachelor of Science	59
Diploma of Arts and Communication	65
Diploma of Commerce	65
Diploma of Criminology and Criminal Justice	65
Diploma of Design	65
Diploma of Engineering	65
Diploma of Health Care	65
Diploma of Health Sciences	65
Diploma of Hotel Management	65
Diploma of Information Technology	65
Diploma of Languages	10, 40
Diploma of Science	65
Diploma of Social and Psychological Science	65

Key dates

APPLICATIONS

QTAC applications for 2021 admissions open	Early August 2020
UAC applications for 2021 admissions open	Early August 2020
Scholarship applications open for 2021 admissions (closing dates vary)	Mid-July 2020
QTAC early-bird applications due	Late September 2020
UAC early-bird applications due	30 September 2020

Queensland Conservatorium

QTAC admission and audition applications open	4 August 2020
QTAC admission and audition applications due—Performing Arts degrees	31 August 2020
QTAC admission and audition applications due—Bachelor of Music	4 September 2020
Queensland Conservatorium auditions	28 September – 3 October 2020

Medicine

2021 GAMSAT registration opens	November 2020
--------------------------------	---------------

Griffith University Early Start to Tertiary Studies (GUESTS)

Applications due for Trimester 2 2020 (Year 11 and 12 students)	15 June 2020
Applications due for Trimester 3 2020 (Year 11 students)	15 October 2020
Applications due for Trimester 1 2021 (Year 12 students)	15 October 2020

GRIFFITH UNIVERSITY EVENTS

Visit griffith.edu.au/key-dates for information about application dates and University events, including those for specific degrees held on campus throughout the year.

2021 GRIFFITH UNIVERSITY TRIMESTER DATES

Trimester 1	8 March – 19 June 2021
Trimester 2	19 July – 30 October 2021
Trimester 3	8 November 2021 – 26 February 2022

Visit griffith.edu.au/academiccalendar for detailed academic calendars.



FIND OUT MORE ON **OPEN HOUSE**

griffith.edu.au/open-house

TALK TO US

Call us on **1800 677 728** to talk to our study advisers.

Chat with us online at **griffith.edu.au/study**

If you're an international student, phone +61 (0)7 3735 6425 or email **international@griffith.edu.au**

For advice and information, visit **griffith.edu.au/ask-us**

