



University of Essex

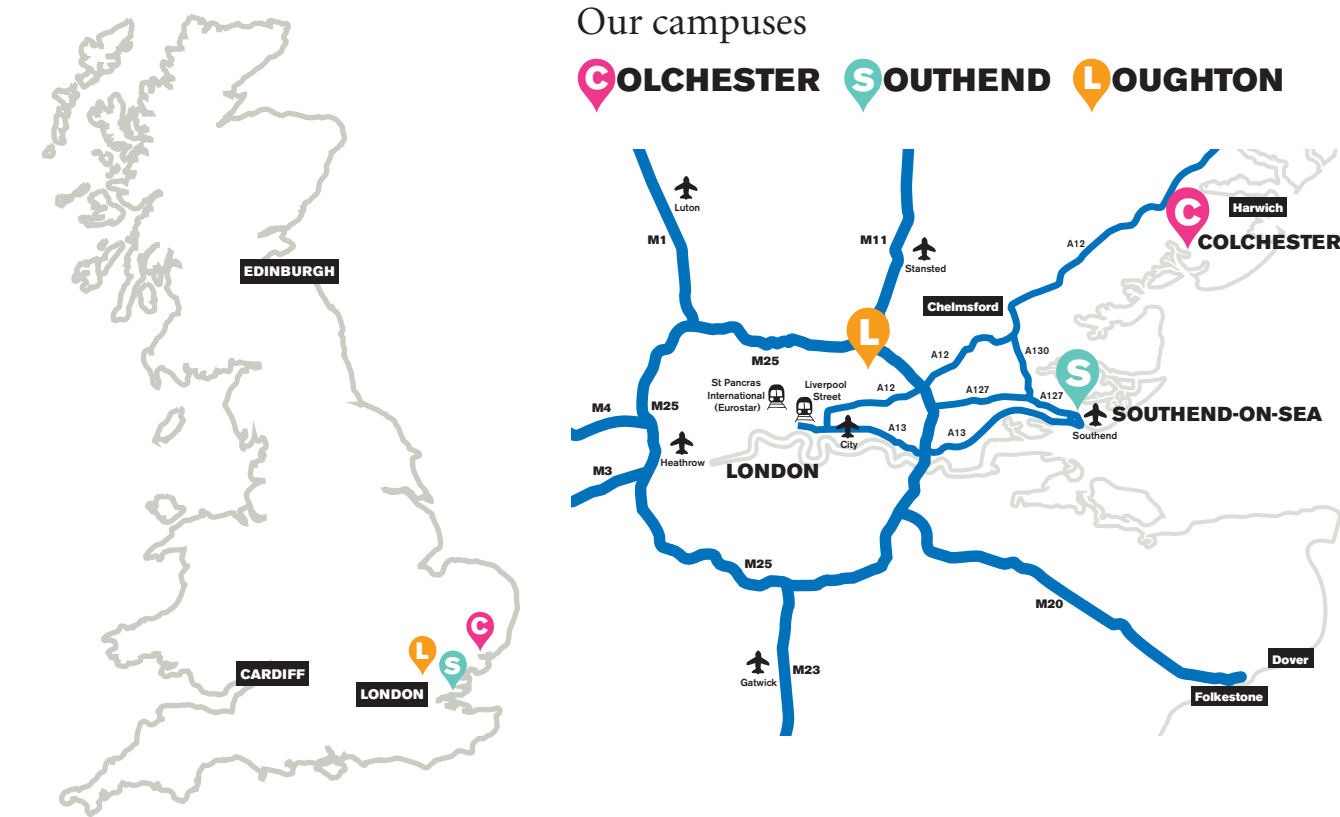
WELCOME HOME

International Prospectus 2017

Colchester Campus



Travelling to our University



Colchester to:

- **Central London: 60 miles (97km)**
Approximately 50-60 minutes by train,
100 minutes by car
- **Heathrow Airport: 95 miles (153km)**
Approximately 90-100 minutes by train,
90 minutes by car
- **Gatwick Airport: 85 miles (137km)**
Approximately 90-100 minutes by train,
90 minutes by car
- **Stansted Airport: 33 miles (53km)**
Approximately 75 minutes by bus,
50 minutes by car
- **Southend Airport: 41 miles (66km)**
Approximately 75 minutes by train,
60 minutes by car

Southend to:

- **Central London: 40 miles (64km)**
Approximately 50-60 minutes by train,
80 minutes by car
- **Heathrow Airport: 76 miles (122km)**
Approximately 120 minutes by train,
80 minutes by car
- **Gatwick Airport: 62 miles (100km)**
Approximately 120 minutes by train,
70 minutes by car
- **Stansted Airport: 40 miles (64km)**
Approximately 90 minutes by bus,
60 minutes by car
- **Southend Airport: 3 miles (5km)**
Approximately 15 minutes by bus,
10 minutes by car

Distance from Colchester:

- **Birmingham:** 155 miles (248 km)
- **Cambridge:** 47 miles (75km)
- **Edinburgh:** 407 miles (656km)
- **Manchester:** 213 miles (340km)
- **Norwich:** 58 miles (95km)
- **Southend:** 45 miles (72km)

For detailed directions to our Colchester
or Southend campuses, visit our website.
► www.essex.ac.uk/int17/visiting

Contents



Why study at Essex?	6
Welcome to Colchester	8
Colchester photo tour	10
Welcome to Southend	12
Southend photo tour	14
Accommodation	16
How to apply	18
Fees and scholarships	20
Student support	22
Students' Union	24
Careers and employability	26
Alumni map	28
International Academy –	
Undergraduate pathways	30
Postgraduate pathways	32
English language programmes	34

Subjects

Accounting, banking and finance	36	Liberal arts and area studies	56
Acting (East 15)	38	Linguistics	58
Biological sciences	40	Literature, film, and theatre studies	60
Business and management	42	Marketing	62
Computational finance	44	Mathematics	64
Computer science and electronic engineering	46	Modern languages	66
Economics	48	Philosophy and art history	68
Health and human sciences	50	Politics	70
History	52	Psychoanalytic studies	72
Law and human rights	54	Psychology	74
		Sociology and criminology	76

Why study at Essex?



Find out if studying at Essex is right for you.

Students love it here: We are ranked 2nd in the UK for student satisfaction among mainstream UK universities (NSS 2015).

A successful future: Over 90% of our international graduates are in graduate-level jobs or further study within just six months of graduation (DLHE Survey 2014).

International community: With students from over 130 nationalities, Essex is the world in one place. We're among the top 25 most international universities in the world (THES 2016).

Location: Close to London, low living costs, English history, beautiful countryside and beaches, safe and connected to Europe. Essex offers all this and more.

Flexibility and choice: Build the degree that suits you with a wide variety of elective courses, joint honours degrees, study abroad options and placement years in industry.

Global careers: Our internationally relevant curriculum, international staff, professional accreditations, and language and study abroad options mean our graduates are prepared for careers in global organisations.

English and foundation courses: Our International Academy helps international students get the best preparation for their degree and we get excellent results. Our undergraduate pathways consistently have progression rates between 75% and 80%.

Lifestyle: Exciting campus nightlife, an active and supportive Students' Union and more than 40 competitive sports clubs. London is nearby and the low-cost airports at Stansted and Southend mean Europe is easy to reach.

Accommodation: Our on-campus accommodation is guaranteed for international students, and offers variety, safety and high quality with affordable costs.

We are Essex

No university experience is the same and Essex is not the same as any other university. Our students don't just listen but learn to ask the difficult questions and then find the answers - learning how to lead, not just follow. An Essex degree is about choice, relevance and developing you as a person. With us, you're not just a student, you're a member.

Essex introduces you to people from every corner of the planet to create networks that last for life. We are a genuinely global community that lives, works and plays together. You'll have the opportunity to study an internationally relevant curriculum, are encouraged to live and study abroad, become part of our diverse community, and are taught or supervised by academics whose research has global impact. We give you the best chance to compete in a global economy.

At Essex you can expect to develop professional skills alongside critical and analytical thinking skills, independence and intercultural communication. We also help you develop a research mindset through research-led teaching from some of the world's top academics. These are real skills that employers want and which you can transfer across industries.



GUIDE	YEAR	RANKING	LOCATION
Research Excellence Framework (REF)	2014	19	UK
The Times and The Sunday Times Good University Guide	2016	35	UK
Complete University Guide	2016	39	UK
National Student Survey	2015	2	UK
QS World University Ranking – Social Sciences	2016	Top 100	World
Times Higher Education '200 Most International'	2016	21	World

“ Over 90% of our international graduates are in graduate-level jobs or further study within just six months of graduation ”

(DLHE Survey 2014)

Welcome to Colchester



A dynamic academic environment set just outside the oldest recorded town in Britain, our Colchester Campus offers extensive facilities and support services to ensure you achieve the most from your studies.

WHY ESSEX?

- ➔ Our brand-new Silberrad Student Centre is a hub for all your services and support needs
- ➔ Colchester combines Roman history and modern entertainment
- ➔ Great transport links to London, rest of the UK and beyond
- ➔ Wide variety of sports, arts and entertainment both on campus and in the local area

Life in Colchester

Diverse and cosmopolitan with a population of around 180,000 people, Colchester is a great student town, offering a rich mix of bars, restaurants, theatres and music venues. Further afield, the surrounding countryside of Essex and Suffolk is one of the hidden gems of England. Enjoy walking, cycling or rowing through this beautiful landscape or perhaps just stop for a picnic.

Sport

We offer opportunities for all abilities and levels to participate in sport right on campus. Our Evolve gym has 130 fitness stations, and we also have a variety of both indoor and outdoor pitches and courts, an indoor sports hall, squash courts and a climbing wall. The Essex Sports Federation has over 40 teams, offering you the chance to join an active community and compete in both local and national fixtures. Colchester itself offers everything from bowling and roller discos to swimming pools and even a laser tag centre.

Arts

Colchester Campus has its very own art gallery, Art Exchange, and our Lakeside Theatre hosts international artists as well as student productions for an exciting mix of theatre, dance and music. Colchester is home to the Firstsite visual arts centre and the smaller Minorities gallery. For live music and comedy there's Colchester Arts Centre, and the Mercury Theatre next door offers student prices for everything from Shakespeare to modern musicals.

Shopping, food and nightlife

Colchester's Culver Square and Lion Walk are home to a fantastic range of familiar shops and high-street fashion. What makes our town really distinctive however are all of the specialist and unique shops on offer. Stroll down Sir Isaac's Walk or Eld Lane, two of the quirkiest streets in the town centre, and you'll find a mixture of retro clothing boutiques, old-school sweet shops, furniture shops, jewellers, and independent health food stores. You can also find everything from American candy to Korean noodles and Russian delicacies in and around the town centre. There's a huge range of restaurants with student-friendly prices offering local and international cuisines. Colchester also has a great selection of bars, pubs, nightclubs and live music venues to cater for all tastes. On campus you'll find a range of restaurants and food outlets, including a wide range of halal, vegan and vegetarian options.

Travel

Colchester has great travel connections for both the UK and abroad. We're an hour away from London Stansted Airport which offers low-cost flights to many European destinations, and London's other airports are also easily accessible by public transport. Travelling in the UK is easy with London and its connections only an hour away by train.

Things to see and do

- The Colchester Castle museum is a great introduction to the town's Roman history
- Colchester Zoo is home to over 270 species of animals and offers a great day out close to the town centre
- Mersea Island under an hour from campus offers some of the tastiest seafood around, including the famous Mersea oysters



► www.essex.ac.uk/int17/colchester

We are Colchester



Colchester Castle

Take a walk, have a picnic, or just take photos in Colchester's award-winning Castle Park



Gorgeous countryside

Row along the river in the famously picturesque village of Dedham



Exciting art

View exhibitions at Firstsite, Colchester's striking contemporary arts venue



Catch a show

Watch a play at the University's Lakeside Theatre, or the Mercury Theatre in Colchester



Green space

Relax by the lakes on campus



Town attractions

Visit Colchester's historic Town Hall



Retail therapy

Go shopping in Colchester and browse international brands and distinct local retailers



Room with a view

Take a walk by our beautiful Wivenhoe House Hotel situated in the parkland of our campus



Go Blades!

Participate in one of our 40+ sports clubs or just cheer on your team



Pub scene

Have a drink in one of the many traditional English pubs like The Rose and Crown at Wivenhoe



Student Service Hub

Enjoy student services and brand new facilities in the Silberrad Student Centre

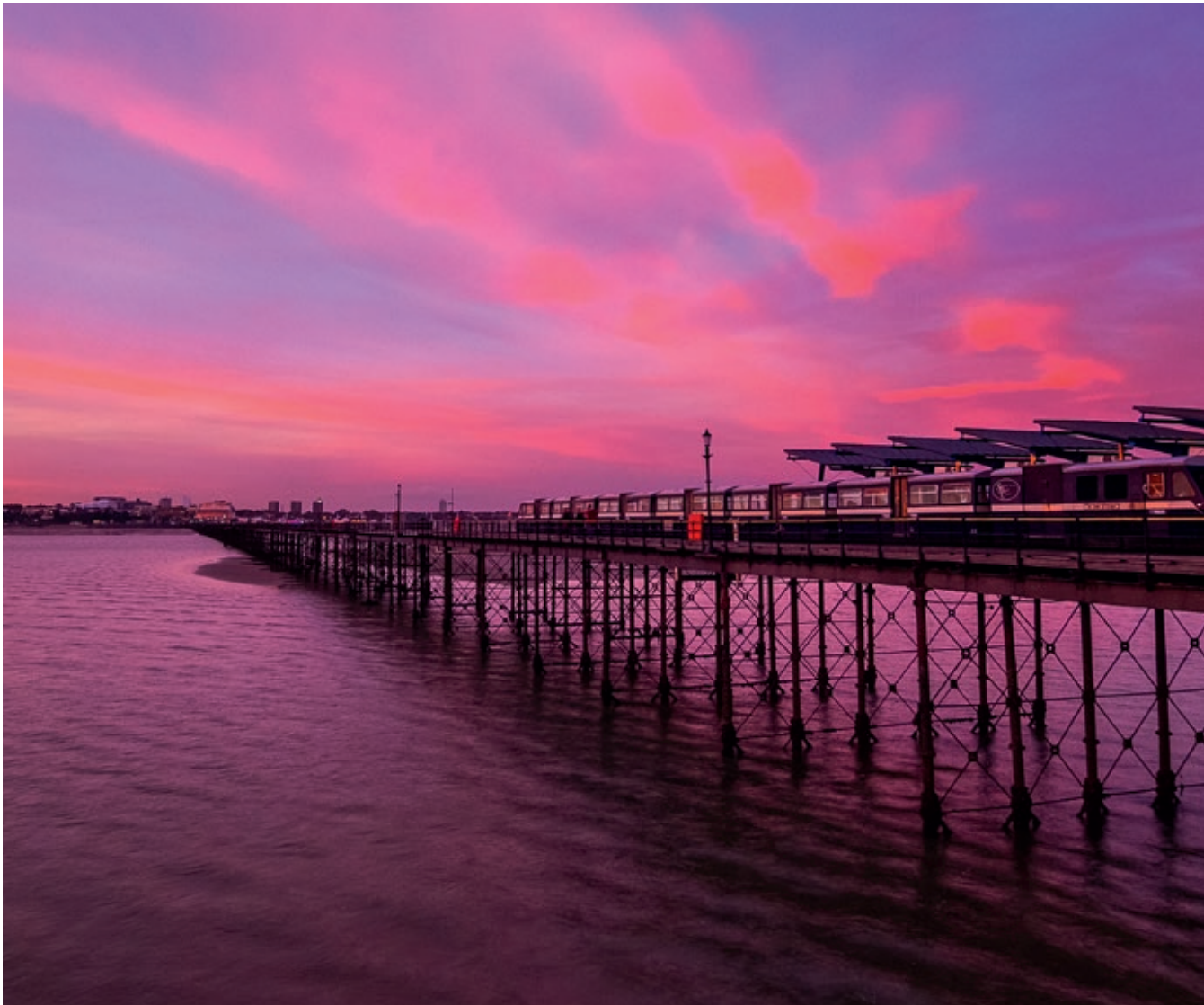


Furry friend

Meet Campus Cat – he's become a bit of a mascot and will always give you a friendly smile

See more with our virtual tours.
► www.essex.ac.uk/int17/colchester360

Welcome to Southend



Located in the heart of Southend-on-Sea, our newest campus offers specialist resources and state-of-the-art facilities in a vibrant and exciting seaside town. Enjoy a rich cultural and educational experience, where everything is modern and spacious, and leisure is only ever a few minutes away.

WHY ESSEX?

- ➔ The Forum building provides extensive library facilities and innovative learning spaces
- ➔ Enjoy the English seaside, including the world's longest pier
- ➔ Try out water sports including windsurfing or jet skiing
- ➔ Just 50 minutes from London, Southend provides easy access to the capital and beyond

Life in Southend

The town is a lively centre for shoppers and watersports enthusiasts alike. Once a British holiday destination, Southend has evolved into a thriving cultural centre of music, theatre, comedy and cuisine – whilst retaining all the charms you would expect from a traditional English seaside town. Our beautiful seafront encompasses seven miles of award-winning beaches, a lively hub for a variety of watersports and the longest pier in the world. Southend is located less than an hour away from the attractions of Central London, and is ideally placed for short-haul trips to Europe.

Our campus

Our Southend Campus, opened in 2007, offers contemporary learning and teaching spaces. Our latest addition to campus - the Forum building - offers a spacious ultramodern learning environment, with an in-house library, gallery and café. The Gateway Building houses a GP and dental practice and multi-faith chaplaincy, while Clifftown Theatre and Studios, a converted church, provides an inspiring setting for our East 15 students housing specialist rehearsal studios and a 200-seat theatre.

Students' Union (SU)

Our SU has plans to become the world's most student-centred organisation, shaping their services around you. The SU organises and facilitates an array of activities and sports in Southend, from yoga lessons to nights out in town. The SU has two bespoke spaces on our Southend Campus, including a new social venue that is run by students. This is your home-from-home for studying, having a cup of coffee or a snack, playing video games or just socialising with friends between classes.

Location

Southend-on-Sea's location means there's plenty to see and do. Sail or cycle along the coast and stroll to the end of the pier. Well-known attractions abound, from Adventure Island and amusement arcades to the famous Rossi ice-cream parlour.

The town holds the Purple Flag: the gold standard for a fun and safe night out. Southend is also a great gateway: London is just 50 minutes away by train, while London Southend Airport is only three miles from campus, offering budget flights to a range of European destinations.

Sports, arts and leisure

If you like to be active, join our Evolve gym or take advantage of the sports on offer through our My Essex Sport programme. If you prefer spectating to participating, there is a thriving live music and arts scene, with two theatres, numerous art galleries, and festivals throughout the year. If food is your thing, you are spoilt for choice with over 300 places to dine in the town, from independent Portuguese and Thai restaurants to popular franchise outlets.

WHAT OUR STUDENTS SAY

“ Southend is really good for shopping. There's lots of variety, with the shops on the High Street, shopping centres, and markets, selling everything from handmade chocolates and bread, to fresh fish and meat. If you're a fan of windsurfing, powerboating, jet skiing or canoeing, try the Marine Activities Centre. ”



We are Southend

Central location

Our facilities in Southend are located minutes from each other



Home comforts

Let your room reflect your style



Campus accommodation

Make our striking University Square accommodation a home-from-home



New facilities

Study in our impressive Forum building



Thrilling attractions

Get your head in a spin at Adventure Island amusement park



Splendid shopping

Do some shopping in the High Street stores



Game on

Enjoy award-winning nightlife, including the historic Kursaal amusement arcade



Picture perfect

Visit attractive Leigh-on-Sea with its period homes and stylish restaurants



Get active

Break a sweat at the Evolve gym



Life's a beach

Wrap up warm for a walk on the beach in the winter



Local flavour

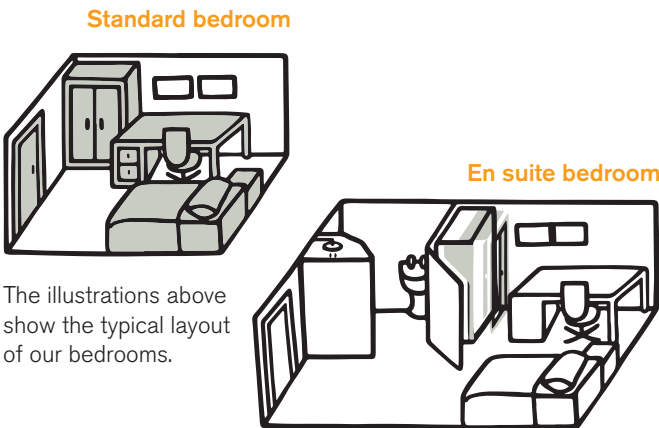
Enjoy a delicious Rossi's ice cream

See more with our virtual tours.
► www.essex.ac.uk/int17/southend360

Accommodation



Wherever you are in the world, it's important you have somewhere to call home. Our award-winning accommodation is guaranteed to all international students, so you can relax and start enjoying your Essex experience.



The illustrations above show the typical layout of our bedrooms.

WHAT WE OFFER

- ➔ Guaranteed accommodation for the duration of your studies (providing your accommodation application is received by the published deadlines)
- ➔ Limited number of single-gender flats available
- ➔ Limited couples' and family accommodation available on campus
- ➔ Our Residence Life support ensures you meet new friends and get along with your flatmates
- ➔ Applicants for East 15 Loughton courses should contact East 15 for further information about accommodation



- ➔ **The Towers (Colchester)**
 - Walking distance to central campus – three minutes
 - Students in each flat – 13 to 16
 - Shared bathrooms
 - Cost per week: £76.93 - £88.20



- ➔ **South Courts (Colchester)**
 - Walking distance to central campus – three minutes
 - Students in each flat – four to six
 - Ensuite bathrooms
 - Undergraduate only
 - Cost per week: £135.38



- ➔ **The Houses (Colchester)**
 - Walking distance to central campus – five minutes
 - Students in each flat – four to six
 - Ensuite bathrooms
 - Undergraduate only
 - Cost per week: £122.64



- ➔ **The Meadows (Colchester)**
 - Walking distance to central campus – ten minutes
 - Students in each flat – up to ten
 - Ensuite bathrooms
 - Cost per week: £131.39 - £140.98



- ➔ **University Quays (Colchester)**
 - Walking distance to central campus – 15 minutes
 - Students in each flat – eight
 - Ensuite bathrooms
 - Cost per week: £123.69 - £137.83



- ➔ **University Square (Southend)**
 - Walking distance to The Gateway Building – three minutes
 - Students in each flat – eight to ten
 - Ensuite bathrooms
 - Cost per week: £135.24 - £166.81

It's likely that our rental charges for 2017-18 will increase from these current prices. We'll publish the new prices on our website as soon as they are available.

► www.essex.ac.uk/int17/accommodation

How to apply



Once you're ready to apply, these pages give you all the information you'll need.

ENTRY REQUIREMENTS

Entry requirements vary by course and level of study. Please visit www.essex.ac.uk/int17/apply to find out the general requirements for your country. Course specific entry requirements can be found through www.essex.ac.uk/int17/courses. Please see subject pages for English language requirements for your course.

Immigration requirements and minimum English language requirements can be found on our website: www.essex.ac.uk/int17/immigration.

How you'll learn

Each subject at Essex combines different methods of teaching to ensure you gain in-depth knowledge in addition to developing the transferable skills that are sought by employers. Expect a mixture of lectures, classes, seminars, labs and field trips, depending on your course. To help you in your studies, MP3 recordings are provided of most lectures, and course materials are available online.

You also have the opportunity to attend symposia, conferences, and become a member of relevant student societies and professional bodies. One-to-one mentoring and other forms of peer support also play an important role in how you learn and how we teach at Essex. If you're joining us as a research student you'll work closely with your supervisor and other research students, and will have the opportunity to present your work through journals and conferences both locally and internationally.

For pathway and English language programmes

You can apply for our International Foundation Programme and International Year One directly by downloading our application form.

► www.essex.ac.uk/int17/iaapply

You can use UCAS to apply for our International Year One or for one of our four-year degrees (Year Zero).

► www.ucas.com

You can apply for one of our English language programmes directly by downloading our application form.

► www.essex.ac.uk/int17/iaapply

For undergraduate degrees

Applications for Bachelors degrees should be made through UCAS. Our UCAS code is E70.

► www.ucas.com

For Masters degrees

We welcome online applications for our Masters degrees.

► www.essex.ac.uk/int17/pgapply

Our online application form takes about 20 minutes to complete and you can save and return to it if you need to. Your supporting documents must include:

- transcripts of your university-level studies to date
- evidence of your English language level (IELTS score)
- copies of certificates for any degrees or other awards that you have completed
- one verifiable reference from an academic referee
- any other items which your department requires (CV/personal statement/work sample)

► www.essex.ac.uk/int17/pgt

For research degrees

We welcome online applications for our research degrees.

► www.essex.ac.uk/int17/pgapply

You will need to submit a research proposal of around 800-1,000 words, which includes:

- a working title and key words
- a summary of the aims and objectives of your research
- an outline of the ways you will meet these aims and objectives, referring to research methods and specific resources you will use
- evidence of your awareness of relevant literature and theoretical approaches
- an overview of the expected outcomes and the original contribution your research will make to existing bodies of knowledge

You must also provide the following:

- two verifiable references from academic referees
- transcripts of your university-level studies to date
- copies of certificates for any degrees or other awards you have completed
- evidence of your English language level (IELTS score)
- any other items which your department requires (CV/personal statement/work sample)

► www.essex.ac.uk/int17/pgr

Personal statements

Due to Home Office requirements, please ensure your personal statement makes it clear why you wish to study in the UK and why you've chosen the subject you are applying for. You should also tell us about your full academic history including any periods of time spent studying in the UK. If you have spent any time out of education, please let us know what you were doing during this time in your personal statement.



► www.essex.ac.uk/int17/courses

IMMIGRATION AND APPLYING FOR A VISA

If you're applying from outside the European Economic Area and require a visa to study in the UK, you'll need to apply under Tier 4 of the UK Government's Points Based Immigration System (PBIS).

We are required to ensure compliance with the UK Home Office regulations as a Tier 4 Sponsor. In some circumstances, we may be unable to make an offer or to issue a CAS if an applicant is unable to meet all Tier 4 requirements, including when there have been changes to these requirements made by the UK Home Office. Refer to our webpage for information about immigration and applying for a visa.

► www.essex.ac.uk/int17/immigration

Fees and scholarships



When you come to study with us, we understand that you are making a significant investment of time and money, so we want to make sure it pays off. Whether it’s through our world-class facilities or our award-winning accommodation, your time at Essex is guaranteed to leave you with memories that no one can put a price on.

Our fees (per annum)

UNDERGRADUATE FEES	
International Foundation Programme and four-year degrees	£11,750
International Year One	£13,350
Bachelors degrees	£13,350
Bachelors degrees – laboratory based (biological sciences and psychology)	£15,450
Living and accommodation costs (per year, approximately)	£7,600 - 11,300
POSTGRADUATE FEES	
Pre-Masters Graduate Diploma	£10,045
Band A: Masters in mathematics, computer science and electronic engineering	£14,950
Band B: Masters in history, language and linguistics, psychoanalytic studies, health and human sciences, law, literature, film, and theatre studies, philosophy and art history	£15,450
Band C: Masters in biological sciences, economics, Essex Business School, politics, sociology, psychology	£15,950
Band D: The Essex MBA	£18,500
East 15	£13,150-14,450
Research degrees	£13,350
Research degrees - biological sciences and psychology	£15,450
Living and accommodation costs (per year, approximately)	£9,200-13,400

Student visa requirements

As part of the visa application process, you’ll be asked to produce evidence of your ability to pay tuition fees and to cover living expenses during the course. Refer to our webpage for information about the current UK Home Office Visas and Immigration (UKVI) requirements.
► www.essex.ac.uk/int17/immigration

Our scholarships

We offer a generous range of university and departmental scholarships of varying amounts. To see what support is available this year or check details of individual scholarships, visit our Scholarship Finder.
► www.essex.ac.uk/int17/scholarships

University of Essex scholarships

AWARD	AMOUNT	ELIGIBILITY	WEBSITE
Vice-Chancellor’s International Scholarships	£2,000 - £5,000	Students from specified countries and departments	www.essex.ac.uk/int17/vc
Essex IB scholarship	£2,000	High achieving students taking the IB	www.essex.ac.uk/int17/ib
Academic Excellence International Masters Scholarships	£2,000 to £4,000	Specified countries and required grades	www.essex.ac.uk/int17/academic
University of Essex Doctoral Scholarships	Varies by department and scheme	Please visit the website for full criteria	www.essex.ac.uk/int17/doctoral
Essex MBA scholarships	£5,000	Self-funding students with relevant background	www.essex.ac.uk/int17/MBA
Loyalty discounts	Up to 33% of tuition fees	Graduates from Essex Bachelors, Masters and Graduate Diploma courses and former study abroad students	www.essex.ac.uk/int17/loyalty

External scholarships for international students

AWARD	CRITERIA IN BRIEF	WEBSITE
Chevening Scholarships	Applicants from specified countries with an outstanding academic background	www.chevening.org
Commonwealth Scholarships	Postgraduate Research applicants from specified countries	cscuk.dfid.gov.uk/apply/scholarships-developing-cw
Fulbright Awards	Open to US students	www.fulbright.org.uk/fulbright-awards/exchanges-to-the-uk/postgraduates/university-of-essex
Marshall Scholarships	Open to US students	www.marshallscholarship.org
China Scholarship Council Award	Open to Chinese nationals who hold an offer for PhD study	www.essex.ac.uk/int17/china
Santander Scholarships	Open to students from specified ‘Santander countries’	www.essex.ac.uk/int17/santander
Civil Society Leadership Awards	Taught Masters applicants in specific fields from specified countries	www.opensocietyfoundations.org/grants/civil-society-leadership-award-20150713
Said Foundation Scholarships	Postgraduate applicants from specified countries	www.saidfoundation.org

► www.essex.ac.uk/int17/finance



Make the most of your life at Essex with our award-winning student support services. Benefit from academic skills support, mentoring and general guidance. Find space for worship, meditation, prayer and quiet reflection or just have a friendly chat.

WHY ESSEX?

- ➔ All undergraduate and taught postgraduate students are allocated a personal tutor
- ➔ Receive advice, information and support on a range of health and wellbeing issues
- ➔ Specialist disability advisers to provide you with advice and guidance on a range of disability support services
- ➔ The Talent Development Centre can help you identify your talents and strengthen those areas you need to develop.

Welfare and support

As an international community we understand the needs and concerns of international students, and do our best to provide you with excellent support facilities. This led to us being named winner of the *Times Higher Education* (THE) Award for Outstanding Support for Students in 2013.

Our support and welfare services include healthcare, immigration advice, religious worship facilities and assistance with improving your academic skills, as well as places you can go if you just need to talk to someone.

Support and guidance

Student support office

Our student support office can help with your general wellbeing and provide funding advice. The student support team also has facilities and advice available for students with disabilities and those battling with exam anxiety.

► www.essex.ac.uk/int17/support

Immigration

UK immigration advice is regulated, so can only be provided by authorised officers. Please visit www.essex.ac.uk/int17/immigration for further information and an enquiry form to be referred to the relevant officer.

Health and wellbeing

Health services

There is a health centre on our Colchester Campus which offers appointments with male and female doctors, as well as specialist services and counselling. Our Southend Campus has dental and GP training practices, supported by the local Primary Care Trust, on site. It is important to register with the health centre as soon as you can so that you receive treatment when you need it.

► www.essex.ac.uk/int17/health

Nightline

Nightline is an award-winning, student-volunteer-run advice and support service, which is available overnight throughout term-time. The volunteers are able to provide a listening ear and impartial advice, or a cup of tea and a friendly talk if you're just feeling homesick.

► www.essex.ac.uk/int17/nightline

Residence Life

The Residence Life team offers support within your on-campus accommodation by providing out-of-hours support, making sure you get along with your flatmates, and organising fun events helping you meet other students in your accommodation building.

► www.essex.ac.uk/int17/reslife

Religious life

Our Multi Faith Chaplaincy operates worship and contemplation areas at both Colchester and Southend campuses.

► www.essex.ac.uk/int17/faith

Support with your studies

You may find studying at a UK university very different to your home country, and it may be the first time you'll be studying in English. We aim to ensure that you can get the most out of your education by providing a range of academic and English language support classes.

Talent Development Centre

Our Talent Development Centre can help with your academic English language skills. They can also help with study techniques and exam preparation.

► www.essex.ac.uk/int17/talent

Mentoring

Our academic departments also provide their own support services, with most departments running student mentoring schemes, and our lecturers and professors offering office hours for one-to-one guidance with your studies.

► www.essex.ac.uk/int17/mentor

Students with families

It is important that you're aware of the additional costs and implications of bringing your family with you to the UK. Please visit www.essex.ac.uk/int17/families for further information for students with dependants.

► www.essex.ac.uk/int17/support

Our Students' Union



Hello wonderful person. We're the Students' Union. We're made of 14,000 members.

When you come to Essex, you're not just a member of an SU, you're part of an unconventional family.

A family that has people from every background, belief and interest imaginable.

A family that's always got your back. Because we believe that together we can do amazing things, to be whoever or do whatever.

What do we do?

We're making four promises to you and we won't rest until we've made them happen.

1. We promise to help you get an amazing degree and job

The two most important things to you are the two most important things to us.

We're here to inspire and motivate you, to cheer you on as you walk into exams and to help you beat the competition in interviews and land your dream job.

2. We promise to give you an amazing membership

We will give you a Students' Union experience that's good enough to make all your friends who aren't at Essex jealous.

We've given students the tools to set up over 100 societies.

And if you're into sport – we run more than 40 sports teams.

3. We promise to shape everything around you

You choose what drinks we serve in our bar and what products we stock in our shops, just write it on the wall and we'll do our absolute best to get it in stock for you ASAP.

All you need to do is text, Tweet or Facebook us, and we'll get on it.

4. We promise to benefit all students

At Essex the Students' Union is here for everyone, no matter your age, gender, nationality, faith, sexuality, year of study, or shoe size.

In our family there's no pretentious cordoned-off VIP area, we're open to everyone.

10 reasons why the SU is one of the best things about Essex

Sports clubs – over 40 teams and all free to join

VTeam – Volunteering opportunities for everyone!

SU Advice – from legal advice to filling in forms, we provide advice on anything and everything

The Store – a mini supermarket on campus

The Salon – from haircuts and colours to manicures and pedicures, the Salon offers it all!

Frango's – a Portuguese restaurant and bar serving your chicken needs

SU Heirloom – every student at Essex gets their own customisable handmade charm to pass down

Cine10 – your very own cinema on campus, showing blockbusters on huge screen with surround sound

SU Lets – our very own letting agency right on campus

SU Market – held every Thursday on campus, selling food, fruit and veg, vintage clothing and more

This is just the start... We could go on and on, but hopefully we've given you a good idea of how we help you have a great time at Essex.



“Hello there! I am Saffy, your VP International. Welcome to the Essex family!

Entering University marks another phase of your life and I understand the whole rollercoaster of excitement and anxiety, high hopes and aspirations.

But worry not as here at Essex you are in good hands. We, the Students' Union, always work our hardest in ensuring that you get one of the best experiences whilst at University.

Therefore, you are on the right path for getting not just an amazing degree, but having one of the greatest times of your life! I look forward to an amazing time together! ”

Saffy Allayna, Malaysia
Vice President International, Essex Students' Union

Careers and employability



An Essex degree is not just about academics, we also focus on developing you towards your future career. Our focus on your employability has helped over 90% of our international graduates to start their careers or further study within six months of graduating.*
(*DLHE survey 2014)

These are just some of the ways we are helping you get on the career ladder:

- **Essex Employability Award** – recognition for any extra-curricular volunteering and work experience
- **Volunteering** through the SU vTeam with hundreds of opportunities available

- **Frontrunners** – our award-winning student internship programme offers over 200 paid placements in graduate-level projects across the university
- **Study abroad opportunities** – most courses offer study abroad and many destinations don't include additional tuition fee costs
▶ www.essex.ac.uk/int17/abroad
- **Learning languages at Essex** – we make language-learning easy. All our students can learn a language to develop new language skills and get an edge when applying for jobs. At Essex, there are four ways to learn
▶ www.essex.ac.uk/int17/languages
- **Placement years** – spend a year or one term gaining work experience (where available). Your placement can take place in the UK or abroad and can kick-start your future career
▶ www.essex.ac.uk/int17/placements
- **Part-time work** – international students on a Tier 4 visa can normally work up to 20 hours per week during term-time
- **Dedicated international careers advisers** and support available during your studies and after you graduate, helping you look for graduate-level work both in the UK and abroad

Alumni activities

Our global alumni network means you will be connected to an existing network of professionals in your home country and abroad, which can be the key to unlocking your future success. Our alumni stay in touch years and even decades after leaving Essex. The alumni office holds networking events for our past students around the world. Recent events include alumni receptions in Mexico, Hong Kong, Malaysia and Singapore. You can find out more about our past students and find contact details of alumni from your country through our website.

▶ www.essex.ac.uk/int17/alumni

Notable alumni

Our 74,000 alumni work in a variety of careers all over the world. These are just a few of the ones who've gone on to have a public profile for their work. In the next pages you can find a map showing more of our international alumni and what they have gone on to do since graduating.

Dr Shirin Sharmin Chaudhury MP (PhD Law, 2000)

Dr Chaudhury made history in 2013 as the first female speaker of Bangladesh's parliament. She has practised law for over 15 years, and won Asia Society's Humanitarian Service Award in 2010 for her work to eliminate violence against women and improving women's employment in Bangladesh.

Dr Oscar Arias Sanchez (PhD Government, 1975)

Oscar Arias has twice been President of Costa Rica, from 1986 to 1990 and again from 2006 to 2010. He received the Nobel Peace Prize in 1987 for his efforts to end the civil wars of several Central American countries. He was awarded an honorary degree by the University in 1988.

David Yates (BA Government, 1987)

David Yates is a BAFTA-award-winning television and film director. He directed the final four instalments in the Harry Potter film series, The Order of the Phoenix, The Half Blood Prince and The Deathly Hallows parts I and II. He was awarded an honorary degree by the University in 2012.

Sir Christopher Pissarides (BA, MA Economics, 1971)

Christopher Pissarides was born in Cyprus in 1948, and graduated from Essex with a First Class Honours degree in Economics in 1970 and gained a Distinction for his Masters the following year. He is now Regius Professor of Economics at LSE. In 2010, he was awarded the Nobel Prize in economics, jointly with Peter A. Diamond and Dale Mortensen, for his contributions to the theory of search frictions and macroeconomics.

GRADUATE DESTINATIONS

These are just some of the employers our graduates have gone on to work with.

- Accenture
- Allen & Overy
- Amnesty
- Barclays
- Bloomberg
- BP
- BT Group
- Cancer Research UK
- Credit Suisse
- Deloitte
- Fujitsu
- GlaxoSmithKline
- Goldman Sachs
- Intel
- KPMG
- Microsoft
- Ministry of Foreign Affairs, Qatar
- Morgan Stanley
- Oxfam
- Procter & Gamble
- Rothschild GmbH
- Panasonic
- PricewaterhouseCoopers
- Shell
- The Royal Shakespeare Company
- United Nations

▶ www.essex.ac.uk/int17/careers

Our global alumni

A global network

Our alumni network is spread across the world and includes top names in politics, business, arts and science. Find some of our global alumni on this map.



International Academy – undergraduate pathway courses



The International Academy – your route to an Essex degree

Our International Academy runs programmes that offer you the chance to enter an Essex degree even if you do not currently meet our entry requirements. We offer pathways that lead into our degrees at both undergraduate and postgraduate level.

We also offer a range of English language programmes that help you improve your English and which can provide a pathway to your degree by helping you meet your English language condition in your offer.

We have been running university pathways for international students for over 25 years and our International Foundation Programme is one of the most established in the UK.

Every year over 600 international students start their journey at Essex with our International Academy and we have a long history of supporting them to achieve their goals. Here are some of the reasons why students choose us:

- successful completion guarantees entry to a range of degrees at Essex
- approximately 75% progression from our undergraduate pathways
- over 95% progression from our pre-session programmes
- a range of pre-session options to suit different needs including subject-specific pathways
- tailored pathways that follow your chosen subject
- you are taught entirely at the University of Essex by our staff
- you can apply directly and/or via UCAS
- January start dates are available for our International Foundation Programme and four-year degrees
- we organise trips and events to help you settle into life in the UK

Undergraduate pathways

Our pathway programmes are ideal if you wish to study at university but do not have the standard qualifications required to enter the first year of our undergraduate degrees. International Academy programmes are specially designed to take into consideration your high school achievements, English language capabilities and desired area of study.

International Foundation Programme

Our International Foundation Programme enables you to reach the required academic level for undergraduate study. You will study this course for one year and successful completion guarantees entry to Year 1 of a relevant undergraduate degree meaning you should graduate in four years.

The course includes three or four subject-based modules, as well as an English language and study skills module. As well as improving your English and academic skills, you gain the necessary experience of living and learning in a university environment. As with all our pathways, you study specialist modules that provide the best possible preparation for your degree, rather than a generic foundation programme.

Admission requirements – Graduating from high school with a good academic record. Requirements vary by country.

English language – UKVI IELTS 5.0 with at least 4.0 in each component.

Pass marks – 40% in all modules.

Start date – October or January.

Four-year degrees (Year Zero)

Our courses have been designed principally to assist students who have not yet reached the required academic level for undergraduate study and to improve academic skills and subject-specific knowledge. The first year is similar in content to our International Foundation Programme and when taken as part of the four-year degree this year is known as 'Year Zero'. Successful completion of Year Zero automatically leads on to Year 1 of the degree, followed by Years 2 and 3.

While the International Foundation Programme offers flexibility and the option to apply to us directly, the four-year degrees (Year Zero) give you the security of a four-year visa and established progression through a degree with us.

Admission requirements – Graduating from high school with a good academic record. (A-levels – DDD, or equivalent in UCAS tariff points, to include two full A-levels. GCSE Mathematics and/or GCSE Science at grade C or above (or equivalent) are required for some courses.) Requirements vary by country.

English language – IELTS 5.5 in each component. GCSE Grade C, IB Standard level 4 and some other English language high school qualifications can be accepted.

Pass marks – 40% in all modules.

Start date – October or January.

International Year One

If you are an international student, have completed a 12-year high school system or foundation course with a good academic record and if you are not able to directly enter the first year of a business-related course, our International Year One is for you. It is equivalent to the first year of study of an Essex Business School undergraduate degree and will provide you with all the necessary subject knowledge and language skills to progress confidently into the second year of a relevant course, enabling you to complete your degree in three years. We also focus on developing your English proficiency, academic literacy and employability skills.

Admission requirements – Graduating from high school with a very good academic record (A-levels – CDD, or equivalent in UCAS tariff points; IB – 25 points). Requirements vary by country. You also need GCSE Mathematics at grade C or above (or equivalent).

English language – UKVI IELTS 5.5 with at least 5.0 in writing and 4.0 in speaking, listening and reading.

Pass marks – 40% in all modules.

Start date – October.

SUBJECTS

Our International Foundation Programme and four-year degrees (Year Zero) offer pathways into the following subject areas:

- | | |
|---------------------------------|--|
| ■ Accounting | ■ Film studies |
| ■ Actuarial sciences | ■ History |
| ■ Art history | ■ Law |
| ■ Banking and finance | ■ Liberal arts |
| ■ Business management | ■ Literature |
| ■ Computer science | ■ Mathematics |
| ■ Criminology | ■ Modern languages |
| ■ Drama | ■ Philosophy |
| ■ Economics | ■ Politics and international relations |
| ■ Electronic Engineering | ■ Sociology |
| ■ English language | ■ Telecommunication engineering |
| ■ Entrepreneurship and business | |

Our International Year One in Business offers a pathway to the following degrees:

- | | |
|---------------------------------|--------------------------------|
| ■ BSc Accounting | ■ BSc Business Management |
| ■ BSc Accounting and Finance | ■ BSc Finance |
| ■ BSc Accounting and Management | ■ BSc Financial Management |
| ■ BSc Banking and Finance | ■ BSc Management and Marketing |

International Academy – postgraduate pathways (pre-Masters)



Our International Academy runs programmes that offer you the chance to enter an Essex degree even if you do not currently meet our entry requirements, or need further preparation to enter our Masters programmes.

WHY CHOOSE A PRE-MASTERS?

- Choice:** we offer specialist pathways into 11 academic departments and 53 Masters degrees
- Quality:** we include subject-specific modules and options taught in different departments
- Staff:** all modules are taught by University staff, including international leaders in their fields
- English:** embedded academic English modules support your learning throughout the year
- Guaranteed progression:** successful completion guarantees entry to a relevant Masters course

GRADUATE DIPLOMA (PRE-MASTERS) COURSES

- Accounting with English for Academic Purposes
- Applied Linguistics with English for Academic Purposes
- Art History and Theory with English for Academic Purposes
- Computer Science with English for Academic Purposes
- Economics with English for Academic Purposes
- Electronic Engineering with English for Academic Purposes
- Entrepreneurship and Innovation with English for Academic Purposes
- European Union Law with English for Academic Purposes
- Finance with English for Academic Purposes
- History with English for Academic Purposes
- International Commercial and Business Law with English for Academic Purposes
- International Trade Law with English for Academic Purposes
- Management with English for Academic Purposes
- Philosophy with English for Academic Purposes
- Politics with English for Academic Purposes
- Psychoanalytic Studies with English for Academic Purposes
- Psychological Studies with English for Academic Purposes

Your pathway to a Masters degree

Our pre-Masters courses provide a high quality pathway into a Masters degree at Essex. Pre-Masters courses start in October and run for nine months until the following June.

If you are a diploma holder or a graduate but do not yet meet the admission requirements for a Masters at Essex, a pre-Masters might be the best option for you. A pre-Masters can also help you if you need to improve your subject knowledge or English language before starting your Masters as each of our courses contains an *English for Academic Purposes* module to help develop your English skills.

Admission requirements – A first degree or higher diploma from a recognised institution. Requirements vary by course.

English language – IELTS 5.5 overall with 5.5 in each component, or equivalent.

Pass mark – 40% in all modules. To progress to an Essex degree our progression mark is 60%. Some departments require 60% overall or 60% in a specific or each module.

Start date – October.

“ The Graduate Diploma in Politics with EAP course is excellent. If you feel that you do not have a strong background knowledge in the subject you wish to study at Masters-level, or think that your English skills are not enough to achieve the best outcomes in your future studies, this course enables you to overcome these anxieties and solve such problems.

Your English modules give you an insight into how you can manage your coursework, while you reinforce your academic background by studying relevant subject-specific modules in your future department. ”

Shimpei Kato, Japan
Graduate Diploma in Politics with EAP

International Academy – English language programmes



Pre-sessional English pathways

Our pre-sessional English language pathways offer you the chance to improve your English and meet any English language conditions on your offer letter without having to retake IELTS. At Essex, we have several types of pre-sessional programmes for you.

Pre-sessional Academic, Language and Study Skills

Our Pre-sessional Academic, Language, and Study Skills (PALSS) programme provides you with integrated preparation in academic English and study skills. PALSS runs for 25, 15 and 10 weeks.

Pre-sessional English Language

Our Pre-sessional English Language (PEL) programme focuses on enhancing your English language skills. You will be taught further grammar and vocabulary development, as well as additional reading, writing, listening and speaking skills. PEL runs for 10 and 5 weeks. These programmes are also offered in Bangkok through Assumption University.

Subject-specific pre-sessional English language programme

We offer two subject-specific pre-sessional programmes for students entering the School of Law and Essex Business School. Our programmes offer a unique opportunity to develop your English skills with subject-specific materials related to your chosen course of study, including textbook extracts, journal articles, model reports and literature reviews. Our subject-specific pre-sessional programme runs for 10 weeks.

Which pre-sessional pathway do I need?

Having so many pre-sessional options is great, but how do you pick the best one for you? Our table on the next page is a good indication of which options are available based on your current IELTS and our English language requirements. Use our pre-sessional finder tool to help decide which options are best for you.

► www.essex.ac.uk/int17/ps

Additionally, if you are an international student and you need a visa to study one of our pre-sessional programmes, you must have a Secure English Language Test (SELT) to meet the UK Home Office Visas and Immigration requirements, please visit our website for further details.

► www.essex.ac.uk/int17/immigration

If you have an unconditional offer to study at Essex and would like additional preparation in English for academic purposes and study skills before starting your course with us, our four-week Essex Academic Skills Programme (EASP) is for you. EASP is an excellent way to settle in to life in the UK and become more confident. In this case you can get one single visa to cover both EASP and your degree. The EASP start date is 29 August 2017.

IELTS PRE-SESSIONAL ENTRY LEVELS

COURSE REQUIREMENT	CURRENT OVERALL	CURRENT WRITING	CURRENT OTHER	PRE-SESSIONAL COURSE LENGTH	PRICES FOR 2017	START DATES
IELTS 6.0 overall	5.5	5.0	5.0	5 week PEL	£1,750	17 August 2017
				10 week PALSS	£3,250	13 July 2017
IELTS 6.0 overall	5.0	5.0	5.0	10 week PEL/subject specific	£3,500	13 July 2017
				15 week PALSS	£4,875	25 May 2017
IELTS 6.5 overall	6.0	5.0	5.0	5 week PEL	£1,750	17 August 2017
				10 week PALSS	£3,250	13 July 2017
IELTS 6.5 overall	5.5	5.0	5.0	10 week PEL	£3,500	13 July 2017
				15 week PALSS	£4,875	25 May 2017
IELTS 6.5 overall	5.0	5.0	5.0	25 week PALSS	£8,125	6 March 2017
IELTS 6.5 (writing 6.0)	6.0	5.5	5.0	5 week PEL	£1,750	17 August 2017
				10 week PALSS	£3,250	13 July 2017
IELTS 6.5 (writing 6.0)	5.5	5.0	5.0	10 week PEL	£3,500	7 July 2017
				15 week PALSS	£4,875	19 May 2017
IELTS 6.5 (writing 6.0)	5.0	5.0	5.0	25 week PALSS	£8,125	29 February 2017
IELTS 7.0 overall	6.5	5.5	5.0	5 week PEL	£1,750	17 August 2017
				10 week PALSS	£3,250	13 July 2017
IELTS 7.0 overall	6.0	5.5	5.0	10 week PEL	£3,500	13 July 2017
				15 week PALSS	£4,875	25 May 2017
IELTS 7.0 overall	5.5	5.5	5.0	25 week PALSS	£8,125	6 March 2017

Please note: If you have an offer for MSc International Management, MSc Management, MSc Marketing Management, MSc Marketing and Brand Management or MSc Human Resources Management, you will be required to take PALSS. All other Essex Business School courses accept PEL or subject-specific. The Department of Sociology only accept PALSS.

Essex English Language Programme

Our International Academy also offers our Essex English Language Programme (EELP). Our EELP teaches general English from elementary level to advanced level and academic English from upper intermediate level to advanced level. EELP is designed for you if you want to go on to study an undergraduate or postgraduate course or want to come for a short period of English language study.

EELP consists of four modules which will provide you with English language preparation in line with the Common European Framework of Reference for Languages (CEFR).

To join EELP you do not need to have previously taken an English language test, on arrival you will be tested and placed in the class which best suits your level. The programme runs throughout the year in five-week terms. You can choose to study for any period from 5 to 40 weeks (in five-week blocks), with entry points in October, January, April, July and August. Students who study consecutively for ten weeks or more are eligible for a free IELTS test at the end of their studies.

The current fee for a five-week block is £1,475.

► www.essex.ac.uk/int17/ia

Accounting, banking and finance



Essex Business School, the largest department of the University of Essex, is ranked in the top 20 of UK Business Schools by the Chartered Association of Business Schools.

WHY ESSEX?

- ➔ More than two-thirds of our research is rated 'world leading' or 'internationally excellent' (REF 2014)
- ➔ In Colchester, you learn in the UK's first zero-carbon business school building, where our virtual trading floor gives you access to industry-standard Bloomberg data
- ➔ In 2014, 96% of our overseas undergraduate leavers were in work or further study within six months of graduating
- ➔ Up to six ACCA exemptions available with selected undergraduate and postgraduate courses

COURSES

UNDERGRADUATE

- BSc Accounting **
- BSc Accounting and Finance **
- BSc Accounting and Management **
- BSc Accounting with Economics **
- BSc Banking and Finance **
- BSc Banking and Finance with a Modern Language
- BSc Banking, Finance and Modern Languages
- BSc Finance **
- BSc Finance and Modern Languages
- BSc Finance with a Modern Language
- BSc Finance with Mandarin
- BSc Financial Management **

POSTGRADUATE - BAND C

- MSc Accounting
- MSc Accounting and Finance
- MSc Accounting and Financial Management
- MRes Accounting
- MSc International Accounting and Banking
- MSc Banking and Finance
- MSc Finance
- MSc Finance and Data Analytics
- MSc Finance and Investment
- MSc Finance and Management
- MSc Financial Engineering and Risk Management
- MSc Finance and Global Trading
- MSc International Finance
- MSD, MPhil, PhD Accounting
- MSD, MPhil, PhD Finance

* This course has an optional year abroad variant
* This course has an optional placement year variant

► www.essex.ac.uk/int17/ebc

English language requirements

- Undergraduate – IELTS 6.0 overall
- Postgraduate – IELTS 6.5 overall

If you don't meet these requirements we offer a range of pre-sessional English courses, please see pages 34-35 for details.

Please note that students who need a Tier 4 visa to study in the UK must meet the UKVI's minimum language requirements

Recent graduate careers

- Accountancy
- Auditing
- Investment banking
- Stockbroking
- Financial and business analysis
- Financial management

Popular modules

Undergraduate

- Corporate Finance
- International Banking
- Management Accounting
- Options and Futures
- Risk Management

Postgraduate

- Bank Strategy and Risk
- Derivative Securities
- Financial Decision Making
- Financial Modelling
- Behavioural Finance

“ Studying at Essex is really a brilliant experience. It gives me opportunity to develop my own ideas and interests, as well as engaging with global thinking. On campus, I can feel the mixture of excitement, enjoying the academic atmosphere and communicating with my friends from all around the world. I can learn advanced knowledge from my teachers and I think it is like a new journey to me.

Even though I miss my country, I do not feel lonely. There are facilities and support that we can rely on. I've made use of the Sports Centre, the library, the IT services, and Employability & Careers. They've helped me not only enjoy my time at Essex but also to plan for the future. ”

Yuanjun Tian, China
MSc Finance and Investment



Personal discovery. Intuition. Technical skill. True to our founding principles, we place equal importance on developing these aspects of your craft.

“The contribution of East 15 actors to British theatre, television and film over the past decades has been immense. Several generations of brilliant actors and actresses have come out of this highly original conservatoire.”

Mike Leigh OBE
Film Director

WHY ESSEX?

➔

East 15 is one of the UK's leading acting schools and is fully accredited by Drama UK and a full member of the University/Resident Theatre Association (URTA) of America

➔

Enjoy purpose-built facilities at Loughton or Southend

➔

We are one of the most international drama schools, with students from over 40 countries

➔

Expand your horizons through study trips to Bali or Moscow

COURSES
UNDERGRADUATE
BA Acting
BA Acting (International)
BA Acting and Contemporary Theatre
BA Stage and Production Management
BA Acting and Stage Combat
BA Acting and Community Theatre
BA Physical Theatre
BA World Performance
Cert HE Theatre Arts
POSTGRADUATE
MA Acting
MA Acting (International)
MFA Acting (International)
MA Theatre Directing
MFA Theatre Directing

English language requirements

- Undergraduate – IELTS 6.0 overall
 - Postgraduate – IELTS 6.0 overall
- Please note that students who need a Tier 4 visa to study in the UK must meet the UKVI's minimum language requirements.

Graduate destinations

Our acting graduates pursue careers in theatre, film, TV and radio throughout the world. Our former theatre directing students now direct professionally, function as artistic directors and teach directing across the world.

Popular modules

- Undergraduate
- Actor and Text
 - Development of Acting Methodology
 - Shakespeare and Elizabethan Verse Drama
 - Voice, Movement, Music and Singing
 - Circus in a Suitcase
- Postgraduate
- Contemporary UK Texts
 - Shakespeare
 - Stanislavskian Acting Methodology
 - The Techniques of Adaptation
 - Theatre of The East (field study option)



“Studying at East 15 on the postgraduate International Acting program gave me the opportunity to perform Shakespeare on the stage of the Globe Theatre, to devise, create, and perform my own work, to work with actors from all over the world, act in a fully produced production at a theatre in central London, and work with tutors who challenge you and encourage the journey of the individual.

There simply just are not any other programs that embrace the beauty of international and cross-cultural collaboration; East 15 is ahead of the curve. What East 15 has is rare.”

Geoff Kanick, USA
MA Acting (International)



As one of the University’s largest departments, we’re renowned for our high levels of student satisfaction on both undergraduate and postgraduate courses. Like our students, our staff are passionate about science and have travelled from all over the world to be at Essex.

WHY ESSEX?



First class equipment and investment in facilities, including a new STEM building due for completion in 2017



Range of placement options at undergraduate level



Inter-disciplinary research opportunities

COURSES

UNDERGRADUATE

- BSc Biological Sciences ⁺*
- BSc Biochemistry ⁺*
- BSc Biomedical Science⁺*
- BSc Genetics ⁺*
- BSc Marine Biology ⁺*
- BSc Sports and Exercise Science ⁺*
- BSc Sports Performance and Coaching ⁺*
- MMarBiol Marine Biology (Integrated Masters)

POSTGRADUATE - BAND C

- MSc Biotechnology
- MSc Cancer Biology
- MSc Molecular Medicine
- MSc Tropical Marine Biology
- MSD, MPhil, PhD Biochemistry
- MSD, MPhil, PhD Biological Sciences
- MSD, MPhil, PhD Cell and Molecular Biology
- MSD, MPhil, PhD Chemical Biology
- MSD, MPhil, PhD Environmental Governance
- MSD, MPhil, PhD Environmental Sciences
- MSD, MPhil, PhD Immunology
- MSD, MPhil, PhD Marine Biology
- MSD, MPhil, PhD Microbiology
- MSD, MPhil, PhD Molecular Medicine
- MSD, MPhil, PhD Sports and Exercise Science
- MSD, MPhil, PhD Sports and Exercise Medicine
- MSD, MPhil, PhD Sports and Exercise Psychology

⁺ This course has an optional year abroad variant
^{*} This course has an optional placement year variant

English language requirements

- Undergraduate – IELTS 6.0 overall
- Postgraduate – IELTS 6.5 overall

If you don't meet these requirements we offer a range of pre-sessional English courses, please see pages 34-35 for details.

Please note that students who need a Tier 4 visa to study in the UK must meet the UKVI's minimum language requirements.

Recent graduate careers

- Laboratory research
- Education
- Scientific publishing
- Medicine courses
- Dentistry courses
- Clinical science
- Scientific sales

Popular modules

Undergraduate

- Cancer Biology
- Coral Reef Biology
- Rational Drug Design
- Mechanisms of Neurological Disease
- Sport and Performance Psychology

Postgraduate

- Molecular Medicine and Biotechnology
- Tropical Marine Systems
- Genomics
- Human Molecular Genetics
- Plant Biotechnology

“ I have always had a keen interest in science, thus choosing a degree within that subject was rather easy for me. I only applied to the University of Essex and luckily I was accepted. The University appealed to me due to its good reputation and its campus life.

My course offered me a range of interesting subjects and topics. The lectures were stimulating and I gained a fascination with the subject. I am truly grateful for everything that I experienced at the University. ”

Sona Vardanyan, Norway
BSc Biomedical Science

Business and management



Essex Business School, the largest department of the University of Essex, is ranked in the top 20 of UK Business Schools by the Chartered Association of Business Schools.

WHY ESSEX?

- ➔ More than two-thirds of our research is rated 'world leading' or 'internationally excellent' (REF 2014)
- ➔ You'll be able to use the facilities in the brand new £23m building at our Colchester campus, or the award winning Forum building at Southend
- ➔ Study abroad opportunities and work placements available at undergraduate level
- ➔ We emphasise ethics and sustainable business practice

COURSES

UNDERGRADUATE

- BSc Business Management (C) **
- BA Business Management and Modern Languages (C)
- BA Business Management with a Modern Language (C)
- BSc Management and Marketing (C) **
- BSc Management with Mandarin (C)
- BBA Business Administration (S) **
- BSc International Business and Entrepreneurship (S) **

POSTGRADUATE - BAND C

- The Essex MBA - Band D + (C)
- MSc Business Analytics (S)
- MBA Museum Management - Band D + (C)
- MSc International Business and Entrepreneurship (S)
- MSc Entrepreneurship and Innovation (S)
- MSc Global Project Management (S)
- MSc Human Resource Management (C)
- MSc Management (C)
- MSc International Management (C)
- MRes Management and Organisation (C)
- MSD, MPhil, PhD Business Administration (S)
- MSD, MPhil, PhD Management Studies (C)
- PhD Business Analytics (S)
- PhD Entrepreneurship (S)

(C) Colchester campus
(S) Southend campus
* This course has an optional year abroad variant
* This course has an optional placement year variant
† Three years relevant work experience required

English language requirements

- Undergraduate – IELTS 6.0 overall
- Postgraduate – IELTS 6.5 overall
- MBA – IELTS 6.5 overall (with all scores 6.0+)

For any postgraduate management courses in Colchester, we also require a writing score of 6.0. If you don't meet these requirements we offer a range of pre-sessional English courses, please see pages 34-35 for details.

Please note that students who need a Tier 4 visa to study in the UK must meet the UKVI's minimum language requirements

Popular modules

Undergraduate

- Business Strategy
- Digital Marketing and Social Media
- International Human Resource Management
- Managing Innovation

Postgraduate

- International Business Environment
- Management Psychology
- Managing Across Cultures
- Managing for Ethics and Sustainability
- Financial Decision Making

Recent graduate careers

- Procurement
- Human resources
- Project management
- Strategic planning
- Operations management
- Entrepreneurship

“ Several reasons made me choose The University of Essex as my home for the next three years. I love London, and now I'm only 50 minutes away, which is perfect. Essex is one of the best universities for research in the country, and it provides great opportunities both now and for the future. I'm doing the Bachelor course Business Administration at the Southend Campus, which is really nice. Even if it's a steep learning curve coming to university, we got all the support we could ask for. We also got a brand new building with top modern equipment that gives us the best possible conditions to learn and develop. ”

Herman Aslaksrud, Norway
BBA Business Administration

Computational finance



We are an innovative, laboratory-based teaching and research centre, with an international reputation for cutting-edge work combining economic and financial modelling with computational implementation.

WHY ESSEX?

- ➔ Cross-disciplinary syllabus incorporating the latest research
- ➔ Practical hands-on instruction across all courses
- ➔ Excellent links with government and industry, particularly via our City Associates Board
- ➔ A number of our students have had internships with prestigious City institutions such as HSBC, Old Mutual, and the Bank of England

COURSES

POSTGRADUATE - BAND A

MSc Algorithmic Trading

MSc Computational Finance

MSc Financial Computing

PhD Computational Finance

“ I would recommend this course for anyone interested in financial markets. It provides students with both theoretical and practical skills that are important for the financial industry. ”

Mohammed Okour, Jordan
MSc Computational Finance, 2013

English language requirements

- Postgraduate – IELTS 6.0 overall

If you don't meet these requirements we offer a range of pre-sessional English courses, please see pages 34-35 for details.

Please note that students who need a Tier 4 visa to study in the UK must meet the UKVI's minimum language requirements

Recent graduate careers

- Banking
- Insurance
- Investment funds
- Hedge funds
- Stock exchanges
- Financial IT providers

Popular modules

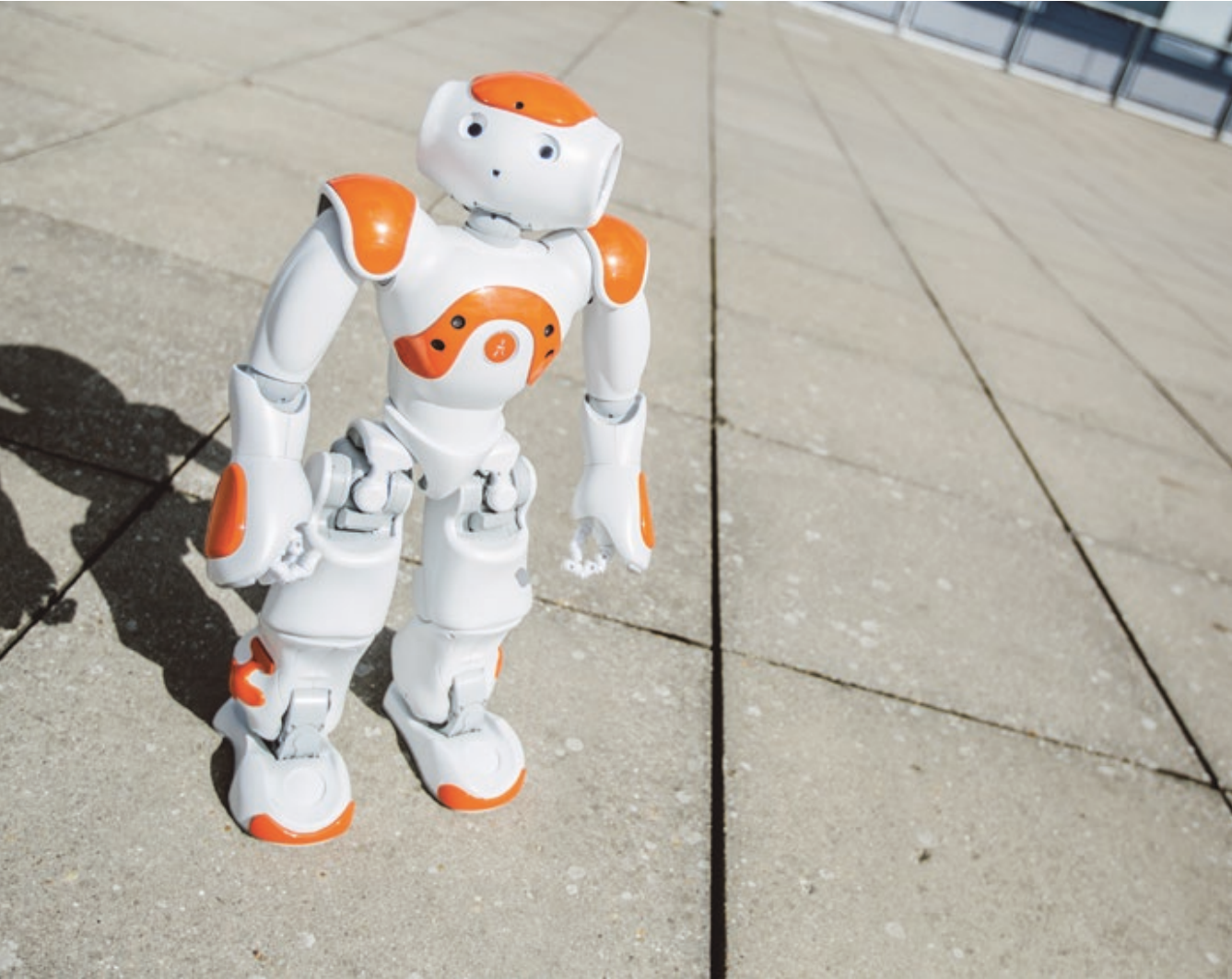
Postgraduate

- High Frequency Finance and Empirical Market Microstructure
- Mathematical Research Techniques using MATLAB
- Financial Engineering and Risk Management
- Big Data for Computational Finance
- Quantitative Methods in Finance and Trading






► www.essex.ac.uk/int17/ccfea

Computer science and electronic engineering



Our courses are guided by an Industrial Advisory Board of experts which includes representatives from companies such as Intel. Regardless of the study path you choose, you'll develop the skills and principles for a rewarding career.

WHY ESSEX?

-  We achieved 91% student satisfaction in the most recent assessment (NSS 2015)
-  We offer specialist laboratories and facilities
-  Ranked joint 8th in the UK for Computer Science in the 2014 Academic Ranking of World Universities
-  Gain professional IET and BCS accreditation – the basis for chartered engineer status

COURSES

UNDERGRADUATE

- BSc Computer Science **
- BEng Computer Networks **
- BSc Computer Games **
- BEng Computer Systems Engineering **
- BEng Computers with Electronics **
- BSc Information and Communication Technology **
- BSc Data Science and Analytics **
- BEng Electronic Engineering **
- BEng Telecommunication Engineering **
- MEng Electronic Engineering
- MEng Telecommunication Engineering *
- MSci Computer Science (Integrated Masters) *
- BEng Robotic Engineering **

POSTGRADUATE - BAND A

- MSc Advanced Communication Systems
- MSc Advanced Computer Science
- MSc Advanced Web Engineering
- MSc Artificial Intelligence
- MSc Big Data and Text Analysis
- MSc Cloud Computing
- MSc Computer Engineering
- MSc Computer Games
- MSc Embedded Systems
- MSc Intelligent Systems and Robotics
- MSc Electronic Engineering
- MSc Computer Networks and Security
- MSD, MPhil, PhD Applied Physics
- MSD, MPhil, PhD Computing and Electronic Systems
- MSD, MPhil, PhD Computer Science

* This course has an optional year abroad variant
* This course has an optional placement year variant

English language requirements

- Undergraduate – IELTS 6.0 overall
- Postgraduate – IELTS 6.0 overall

If you don't meet these requirements we offer a range of pre-sessional English courses, please see pages 34-35 for details.

Please note that students who need a Tier 4 visa to study in the UK must meet the UKVI's minimum language requirements

Recent graduate careers

- Games design
- Telecommunications
- Motorsport and aerospace engineering
- Software development
- Electronic engineering

Popular modules

Undergraduate

- Artificial Intelligence
- Application Programming
- Computer Game Design and Programming
- Computer Security
- Mobile Robotics

Postgraduate

- Digital Signal Processing
- Mobile and Social Application Programming
- Machine Learning and Data Mining
- Game Artificial Intelligence

“ My course deals with all the new aspects of merging technology. The department has some great facilities, including robotics labs and embedded systems labs. The University has so many experts and experienced professors who have helped me in solving any problems that arise with my research. It also has an amazing campus where all departments are working together. Overall I am very happy and proud to be a part of the university. ”

Aun Muhammad Hussain, Pakistan
MSc Electronic Engineering



We are one of Europe’s leading economics departments. Our creative and committed academics undertake world-leading research, pioneering new solutions to global issues.

WHY ESSEX?

- ➔ The department is ranked 5th in the UK for research excellence (REF 2014)
- ➔ We achieved 96% student satisfaction placing us 5th in the UK (NSS 2015)
- ➔ Top 20 department in the UK (TGUG 2016)
- ➔ Excellent research facilities, including access to the UK Data Archive based at the University

COURSES

UNDERGRADUATE

- BA, BSc Economics **
- BA Economic Analysis for Public Policy **
- BA, BSc Management Economics **
- BA, BSc International Economics **
- BA, BSc Financial Economics **
- BA Financial Economics and Accounting +
- BSc Economics with Mathematics +
- BA History and Economics +
- BA Economics with French/German/Italian/Spanish/Portuguese +

POSTGRADUATE - BAND C

- MA Economics
- MSc Money and Banking
- MSc Behavioural Economics
- MSc Accounting and Financial Economics
- MSc Applied Economics and Data Analysis
- MSc Computational Economics, Financial Markets and Policy
- MSc Economics
- MSc Economics and Econometrics
- MSc Financial and Business Economics
- MSc Financial Economics
- MSc Financial Econometrics
- MSc Financial Economics and Econometrics
- MSc International Economics
- MSc Management Economics
- Graduate Diploma in Economics
- Graduate Diploma in Statistics and Econometrics
- MRes Economics
- MPhil, PhD Economics

* This course has an optional year abroad variant
* This course has an optional placement year variant

English language requirements

- Undergraduate - IELTS 6.0 overall
- Postgraduate - IELTS 6.5 overall

If you don't meet these requirements we offer a range of pre-sessional English courses, please see pages 34-35 for details.

Please note that students who need a visa to study in the UK must meet the UKVI's minimum language requirements

Recent graduate careers

- Santander
- Deloitte
- Citigroup
- Ernst and Young
- Morgan Stanley
- National government

Popular modules

Undergraduate

- Economic Development in Global Perspective
- Labour Economics
- International Trade
- Corporate Finance
- Monetary Innovations and Central Banks

Postgraduate

- Time Series Econometrics
- Game Theory and Applications
- Environmental Economics
- Behavioural Economics
- Panel Data Methods

“ I was looking for a research-led learning experience and that’s what attracted me to Essex. The Economics department’s degree structure has been designed to maximise flexibility in module choices, allowing me to choose from a wide range of modules and shaping my degree to suit my particular areas of interest. Moreover, the incredible feeling of community at Essex makes it impossible for anyone not to get involved! ”

My participation in societies and volunteering really helped me to enhance my employability skills and enrich my time at Essex. My Essex experience indeed proved invaluable in securing my graduate role! ”

Cheah Wai Kit, Malaysia
BSc Economics, 2013
Management Associate at United Overseas Bank (UOB), Malaysia

Health and human sciences



We are at the forefront of preparing people to solve real-life issues in health and society, offering courses that both commissioners and employers believe in. People are at the heart of all we do.

WHY ESSEX?

- ➔ Great facilities including simulation labs where you can practise developing your clinical skills safely
- ➔ We specialise in applied, multi-disciplinary research that addresses local, national and international issues relating to health and social care policy and practice, and other related fields.
- ➔ We have strong partnerships with local health authorities
- ➔ Gain real experience through work placements and research

COURSES

UNDERGRADUATE

- BA Social Work
- BSc Sports Therapy ^{†*}
- BSc Physiotherapy (subject to approval)
- BSc Occupational Therapy (subject to approval)

POSTGRADUATE - BAND B

- MA, MPhil, PhD Health and Organisational Research
- MSc Health Research
- MSc Occupational Therapy (Pre-Registration)
- MSc Physiotherapy (Pre-Registration)
- MSc Speech and Language Therapy (Pre-Registration)
- MSD, MPhil, PhD Health Studies
- MSD, MPhil, PhD Nursing Studies
- MSD, MPhil, PhD Occupational Therapy
- MSD, MPhil, PhD Physiotherapy
- MPhil, PhD Applied Psychology
- MSD, MPhil Social Policy
- MSD, MPhil, PhD Speech and Language Therapy
- MPhil, PhD Applied Psychology
- Doctorate Clinical Psychology

[†] This course has an optional year abroad variant
^{*} This course has an optional placement year variant

English language requirements

- Undergraduate – IELTS 6.0 overall
- Postgraduate – IELTS 6.5 overall

Please check the department's website for specific requirements for Pre-Registration courses, BA Social Work, and Doctorate Clinical Psychology.

If you don't meet these requirements we offer a range of pre-sessional English courses, please see pages 34-35 for details.

Please note that students who need a Tier 4 visa to study in the UK must meet the UKVI's minimum language requirements

Popular modules

Undergraduate

- Emotional, Relational and Mental Health Issues
- Practice Interventions
- Health, Well-Being and InterProfessional Practice
- Exercise Physiology
- Sports Therapy Placement

Postgraduate

- Health Promotion
- Theory and Method in Health Research
- Transformation Through Occupation
- Occupational Performance in Practice
- Cardiorespiratory Physiotherapy

RESEARCH FOCUS

Our staff are multi-professional, have both clinical and academic credibility, and work across traditional boundaries. Our staff include nurses, doctors, physiotherapists, speech and language therapists, sociologists of health, psychologists, sports therapists, methodologists and specialists in health service management. In addition we draw on the expertise of visiting Fellows and lecturers.

Our research activities are strongly focused on current, real-time health and social care issues. Our specialisms include the application of psychology and sociology to real-world issues, the understanding of health risks, social exclusion, mental health, learning difficulties, substance misuse, gerontology, chronic illness, service evaluation, informatics and evidence-based practice. Our School also hosts a growing number of PhD students.



History is about people and created by people. We’re interested in history from the grass roots – how everyday people make and are affected by history – as well as from the top down.

WHY ESSEX?

- ➔ We achieved 93% student satisfaction in the most recent survey (NSS 2015)
- ➔ Flexible degrees with a wide range of history modules from 1450 to the present day
- ➔ Study abroad as part of your course
- ➔ Gain experience through voluntary work at local museums, archives and heritage sites

COURSES

UNDERGRADUATE

- BA History +
- BA American History +
- BA Global History +
- BA History and Criminology +
- BA History with Film Studies +
- BA History and Literature +
- BA History with Human Rights +
- BA History with Modern Languages +
- BA Modern History +
- BA Modern History and International Relations +
- BA Modern History and Politics +
- BA History and Sociology +

POSTGRADUATE - BAND B

- MA History
- Postgraduate Certificate in History
- MAD, MPhil, PhD History

+ This course has an optional year abroad variant

English language requirements

- Undergraduate – IELTS 6.0 overall
- Postgraduate – IELTS 7.0 overall

If you don't meet these requirements we offer a range of pre-sessional English courses, please see pages 34-35 for details. Please note that students who need a Tier 4 visa to study in the UK must meet the UKVI's minimum language requirements

Recent graduate careers

- Government
- Museums
- Galleries
- Archaeology
- Archiving
- Education

Popular modules

Undergraduate

- China: The Long 20th Century
- In Slavery: The African American Experience
- Latin American History
- The United States and the Vietnam War
- From Stalin to Putin
- Slavery in the Atlantic World

Postgraduate

- Die Hard: Martyrdom in Britain 1300-2014
- Race and Class in the United States, South Africa and Britain
- Narcotic Culture: A History of Drugs
- A Global History of Food, c.1400 - c.1750

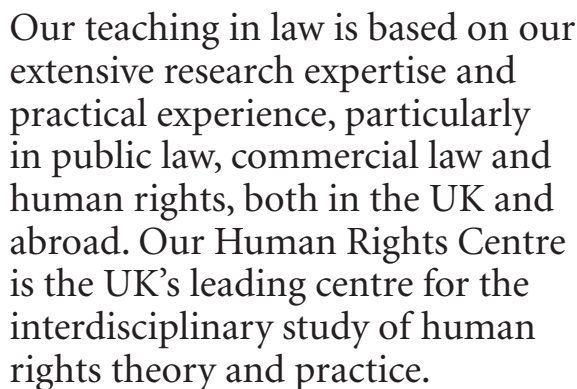
RESEARCH FOCUS

Our Department is internationally recognised for the quality of its research across a broad range of areas from 1450 to the present. More than two-thirds of our research was rated 'world leading' or 'internationally excellent' in the REF 2014.

Members of our Department have a huge variety of research interests, ranging from social and cultural history to politics and international relations. Themes of particular interest in research include violence and protest, race, class formation, nationalism, cultural history, gender, and wars and revolutions.

In line with our commitment to comparative history and global perspectives, our teaching and research team is international.

LAW AND HUMAN RIGHTS



- ➔ Gain practical experience with our Essex Law Clinic and Human Rights Clinic
- ➔ Peer mentors guide you through your first year
- ➔ Leading research expertise across commercial law, public law, and human rights law
- ➔ We were awarded the Queen's Anniversary Prize in 2010 in recognition of our work in advancing global human rights

- ▶ www.essex.ac.uk/int17/law
- ▶ www.essex.ac.uk/int17/hrc

Graduate profiles for our Law programmes are available on our website.
▶ www.essex.ac.uk/int17/law

Liberal arts and area studies



We bring together academics from across the University. Our courses are interdisciplinary, allowing you to study a variety of subjects by choosing from modules in literature, history, philosophy, the history of art, sociology, and politics.

WHY ESSEX?

- ➔ Become an expert in American, European or Latin American studies
- ➔ Study abroad for a term or a year
- ➔ A wide variety of language options available
- ➔ Flexible degree structures allow you to build a course according to your interests
- ➔ Study with leading academic experts from across our departments

COURSES

UNDERGRADUATE

- BA American Studies (United States) +
- BA American Studies (United States) with Film +
- BA Criminology and American Studies +
- BA European Studies
- BA European Studies and Modern Languages
- BA European Studies with French/German/Italian/Spanish
- BA European Studies with Politics
- BA Latin American Studies
- BA Latin American Studies with Business Management
- BA Latin American Studies with Human Rights
- BA Liberal Arts +
- BA Global Studies +

+ This course has an optional year abroad variant
Where optional year abroad is not shown, the course includes a compulsory term or year abroad.

English language requirements

- Undergraduate – IELTS 6.0

If you don't meet these requirements we offer a range of pre-sessional English courses, please see pages 34-35 for details.

Please note that students who need a Tier 4 visa to study in the UK must meet the UKVI's minimum language requirements.

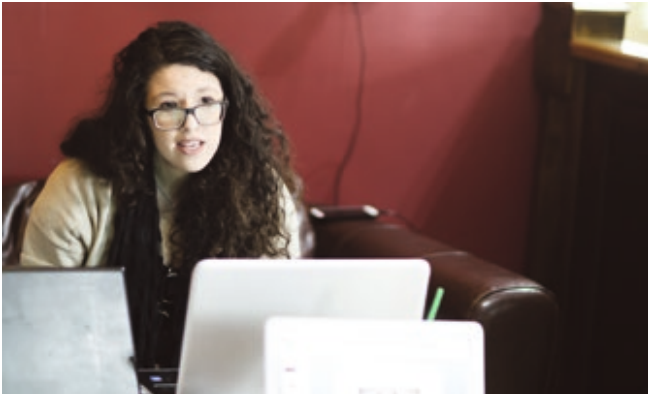
Recent graduate careers

- Civil service
- International embassies/agencies
- Tourism
- Media and journalism
- Government
- Politics

Popular modules

Undergraduate

- Anthropology of Latin America
- International Security Studies
- American Languages
- Europe: Myth and Idea
- World Cinema



“What is so good about liberal arts is that you only have one compulsory module each year and the rest is up to you. This gives you the opportunity to build up your degree to how it would suit your particular future career, or if you are not quite sure yet what you want to do, you can prepare yourself for anything and everything. It is the perfect course to study no matter what you think about the future. You can choose from hundreds of different modules from a range of different fields.”

Kristin Aakvik, Norway
BA Liberal Arts

► www.essex.ac.uk/int17/cish



We are one of the largest and most prestigious language and linguistics departments in the world. You'll become part of an academic community that undertakes world-leading research. Our lecturers are internationally renowned.

WHY ESSEX?

- ➔ Work in our state-of-the-art interpreting lab and UN-style conference booths
- ➔ Top 10 in the UK for research quality (REF 2014)
- ➔ More than three-quarters of our research was rated 'world leading' or 'internationally excellent'
- ➔ Choose from a wide range of modules in linguistics or translation and interpreting

COURSES

UNDERGRADUATE

- BA English Language and History **
- BA English Language and Linguistics +
- BA English Language and Literature **
- BA English Language, and Language Development **
- BA Linguistics **
- BA English Language and Sociology **
- BA English Language and Teaching English as a Foreign Language **

POSTGRADUATE - BAND B

- MA Applied Linguistics
- MRes Analysing Language Use
- PG Diploma, MA Chinese-English Translation and Interpreting
- MA Business Translation and Interpreting (Chinese-English)
- MA English Language and Linguistics
- MRes Experimental Linguistics
- MA Linguistic Studies
- MA, MRes Linguistics
- MA Psycholinguistics
- MA Sociolinguistics
- MA TEFL/TESOL
- MA Translation and Literature
- MA Translation, Interpreting and Subtitling
- MA Translation and Professional Practice
- MPhil, PhD Analysing Language Use
- MPhil, PhD Applied Linguistics
- MPhil, PhD English Language Teaching
- MPhil, PhD Experimental Linguistics
- MPhil, PhD Linguistics
- MPhil, PhD Psycholinguistics/ Sociolinguistics

* This course has an optional year abroad variant
* This course has an optional placement year variant

English language requirements

- Undergraduate – IELTS 6.0 overall
- Postgraduate – 6.5 overall for Masters apart from MA Translation & Literature (7.0) and MA Chinese-English Translation and Interpreting (7.5). 7.0 for research degrees. 6.0-6.5 in writing required for all courses.

Please see www.essex.ac.uk/int17/courses for specific requirements. If you don't meet these requirements we offer a range of pre-sessional English courses, please see pages 34-35 for details.

Please note that students who need a Tier 4 visa to study in the UK must meet the UKVI's minimum language requirements.

Recent graduate careers

- Education
- Learning support
- Media
- Publishing

Popular modules

Undergraduate

- Child Language Acquisition and Language Disorders
- Meaning and Words
- Second Language Learning
- Language Rights

Postgraduate

- Language and Gender
- Multilingualism and Language Impairment
- Simultaneous Interpreting
- Written Translation

“What made Essex my first and only choice was the fact that they offered this unique Masters program - an MA in Translation, Interpreting and Subtitling. The course offers a great deal of variety and practicality. I was able to acquire skills and knowledge through preparing speeches and interpreting at student-led conferences, engage classmates in translation challenges, attend seminars and network with industry professionals. State-of-the-art facilities such as interpreting booths and specifically tailored computer labs only added to the authentic feel of a translator/interpreter setting.”

Nicholas Cumberbatch, Barbados - MA Translation, Interpreting and Subtitling

Literature, film, and theatre studies



Our courses are taught by leading academics, as well as experienced writers, film makers and journalists, and allow you to follow specialised pathways or to combine your interests across our subject areas.

WHY ESSEX?

- ➔ 100% student satisfaction for film studies (NSS 2015)
- ➔ 6th for drama in the UK (Guardian University Guide 2015)
- ➔ Top 20 in the UK for English and creative writing (Guardian University Guide 2015)
- ➔ Use of our state-of-the-art Lakeside Theatre
- ➔ Dedicated film screening and editing facilities

COURSES

UNDERGRADUATE

- BA Creative Writing +
- BA Drama +
- BA Drama and Literature +
- BA English and United States Literature +
- BA English Literature +
- BA Film and Creative Writing +
- BA Film Studies +
- BA Film Studies and Literature +
- BA Multimedia Journalism +
- BA Literature and/or Modern Languages +
- BA Literature and Creative Writing +
- BA Literature and Sociology +

POSTGRADUATE - BAND B

- MA American Literatures
- MA Literature
- MA Film and Literature
- MA Film Studies
- MA Creative Writing
- MA Playwriting
- MA Wild Writing: Literature, Landscape and the Environment
- MAD, MPhil, PhD Creative Writing
- MAD, MPhil, PhD Film Studies
- PhD Film Studies (Creative Practice)
- MAD, MPhil, PhD Literature
- MAD, MPhil, PhD Theatre Studies

+ This course has an optional year abroad variant

English language requirements

- Undergraduate – IELTS 6.0 overall
- Postgraduate – IELTS 7.0 overall with 6.5 in writing

Separate requirements apply for BA Multimedia Journalism, please visit our website for further details. If you don't meet these requirements we offer a range of pre-sessional English courses, please see pages 34-35 for details.

Please note that students who need a Tier 4 visa to study in the UK must meet the UKVI's minimum language requirements.

Recent graduate careers

- Journalism
- Stage management
- TV production
- Magazine editing
- Screenwriting
- Publishing

Popular modules

Undergraduate

- Understanding and Writing Science Fiction
- Myth and the Creative Process
- Film and Propaganda
- Film Animation
- Creative Performance

Postgraduate

- Adaptation
- Writing Magic
- African American Literature
- The Wild East

“After graduating from Essex I began writing novels and my debut, *The Beauty That Flows Past*, won a literary prize in Norway, which was a massive achievement for me and a great honour.

Studying BA Creative Writing definitely helped develop my writing. It was an important stepping stone towards becoming a published writer. I had the privilege of being taught by talented and inspiring professors, and I am grateful for all their encouragement and guidance during my three years at Essex.”

Ida Løkås, Norway
BA Creative Writing, 2009



Essex Business School, the largest department of the University of Essex, is ranked in the top 20 of UK Business Schools by the Chartered Association of Business Schools.

WHY ESSEX?



More than two-thirds of our research is rated 'world leading' or 'internationally excellent' (REF 2014)



You'll be able to use the facilities in the brand new £23m building on Colchester campus, or the award winning Forum building Southend



More than half of our students are from overseas, so you're joined in class by students from all over the world.



Study abroad opportunities and work placements available at undergraduate level

COURSES

UNDERGRADUATE

BSc Management and Marketing ⁺* (C)

BSc Marketing ⁺* (S)

POSTGRADUATE - BAND C

MSc Marketing and Brand Management (C)

MSc Marketing Management (C)

MSc International Marketing and Entrepreneurship (S)

(C) Colchester campus

(S) Southend campus

⁺ This course has an optional year abroad variant

* This course has an optional placement year variant

English language requirements

- Undergraduate – IELTS 6.0 overall
- Postgraduate – IELTS 6.5 overall

For any postgraduate marketing courses in Colchester, we also require a writing score of 6.0. If you don't meet these requirements we offer a range of pre-sessional English courses, please see pages 34-35 for details.

Please note that students who need a Tier 4 visa to study in the UK must meet the UKVI's minimum language requirements

Recent graduate careers

- Advertising and marketing
- Entrepreneurship
- Management
- International project management
- Recruitment
- Business creation

Popular modules

Undergraduate

- Consumer Behaviour
- Brand Management
- Corporate Marketing
- E-commerce
- Managing innovation

Postgraduate

- Critical Marketing
- Strategic Brand Communication
- Corporate Marketing Strategy
- Ethical Marketing
- Global Project and Product Development



“As an International student, I was very much attracted by the high level of cultural diversity of Essex as it allows me to meet people from around the world, which enables me to widen my perspectives.

Also, what caught my attention is that Essex has a good reputation for its Business School and has a high ranking in research, which is what made me decide to study Management and Marketing at Essex.

The university also provides us with many career opportunities such as work experiences and employability workshops that enhance our employability.”

Hiu Kei Chan, Hong Kong
BSc Management and Marketing

► www.essex.ac.uk/int17/ebs



Our staff are award-winning teachers as well as world-class academics, and our staff and students know each other personally – we are a true academic family.

WHY ESSEX?

- ➔ Small and friendly department
- ➔ Placement year and study abroad options available at undergraduate level
- ➔ BA Actuarial Science offers exemptions from all 8 IFA examinations
- ➔ Postgraduate courses specialising in data science and statistics

COURSES

UNDERGRADUATE

- BSc Actuarial Science **
- BSc Economics and Mathematics **
- BSc Finance and Mathematics **
- BSc Mathematics **
- BSc Mathematics and Statistics **
- BSc Mathematics with Computing **
- BSc Mathematics with Physics **

POSTGRADUATE - BAND A

- MSc Actuarial Science
- MSc Data Science
- MSc Discrete Mathematics and its Applications
- MSc Financial Decision Making with Applications
- MSc Mathematics and Finance
- MSc Statistics
- MSc Statistics and Operational Research
- MSc Statistics and Econometrics
- Graduate Diploma in Mathematics
- MSD, MPhil, PhD Applied Mathematics
- MSD, MPhil, PhD Bioinformatics
- MSD, MPhil, PhD Biostatistics
- MSD, MPhil, PhD Mathematical Biology
- MSD, MPhil, PhD Mathematics
- MSD, MPhil, PhD Operational Research
- MSD, MPhil, PhD Pure Mathematics
- MSD, MPhil, PhD Statistics

* This course has an optional year abroad variant
* This course has an optional placement year variant

English language requirements

- Undergraduate – IELTS 6.0 overall
- Postgraduate – IELTS 6.0 overall

If you don't meet these requirements we offer a range of pre-sessional English courses, please see pages 34-35 for details.

Please note that students who need a Tier 4 visa to study in the UK must meet the UKVI's minimum language requirements.

Recent graduate careers

- Accountant
- Actuary
- Economist
- Financial Analyst
- Risk Assessor
- Statistician

Popular modules

Undergraduate

- Optimisation
- Complex Variables
- Graph Theory
- Mathematical Biology
- Applied Statistics

Postgraduate

- Nonlinear Programming
- Mathematics of Portfolios
- Graph Theory
- Data, Probability and Statistics
- Cryptography and Codes

“ My year at Essex was both challenging and exciting. To achieve good results I had to study a lot but it was so amazing to obtain new knowledge, broaden my experience, and find new friends.

The friendly atmosphere, supportive and very professional staff were the main advantages of the Department of Mathematical Sciences. The structure of my course was excellent, combining very useful financial modules (financial modelling, risk management, etc) and mathematical subjects (portfolio mathematics, research methods etc), which complemented each other and gave full understanding of the mathematical tools applied in the financial sphere. ”

Maryam Belgibayeva, Kazakhstan
MSc Mathematics and Finance, 2011

Modern languages



Our undergraduate courses in modern languages have a triple focus on developing language proficiency, cultural awareness and professional skills. We are the only UK university that offers you the chance to study up to four languages.

WHY ESSEX?

- ➔ Study a range of languages including Mandarin Chinese
- ➔ Top 10 in the UK for research quality (REF 2014)
- ➔ All languages taught by native or bi-lingual teachers
- ➔ Put your language skills to use during study abroad
- ➔ Opportunity to study translation, interpreting and subtitling

COURSES

UNDERGRADUATE

- BA Language Studies *
- BA French Studies and Modern Languages
- BA German Studies and Modern Languages
- BA International Relations and Modern Languages +
- BA Italian Studies and Modern Languages
- BA Literature and/or Modern Languages
- BA Modern Languages
- BA Modern Languages and English Language
- BA Modern Languages and Linguistics
- BA Modern Languages and Teaching English as a Foreign Language
- BA Modern Languages with Latin American Studies
- BA Philosophy and/or Modern Languages
- BA Politics and Modern Languages
- BA Portuguese Studies and Modern Languages
- BA Spanish Studies with Modern Languages
- BA Spanish Studies with Latin American Studies
- BA Spanish, Portuguese and Brazilian Studies

All courses are four years apart from *BA Language Studies and +BA International Relations and Modern Languages (where an optional year abroad is available)

English language requirements

- Undergraduate – IELTS 6.0

If you don't meet these requirements we offer a range of pre-sessional English courses, please see pages 34-35 for details.

Please note that students who need a Tier 4 visa to study in the UK must meet the UKVI's minimum language requirements

Recent graduate careers

- Education
- Learning support
- Media
- Publishing
- Journalism
- Marketing

Popular modules

Undergraduate

- French Cinema and Culture
- Three Countries, One Language – Austria, Switzerland and Germany
- Brazil in Focus – Business, Culture and Society
- Spanish and Latin American Art, Film and Music
- La Dolce Italia – a Journey Across Enduring Italian Traditions

WHY STUDY ABROAD?

Study abroad is extremely worthwhile and enjoyable both socially and educationally.

As well as experiencing life in another country, your study abroad experience can help you in your future career, showing that you are naturally outgoing and adventurous, open to new ideas and methods of working. More and more students are enjoying spending a period of study in another country as part of their studies.

After your year abroad, you will be able to present future employers with evidence of your capacity for inter-cultural understanding, self-reliance and independence.

Philosophy and art history



We offer degrees in both philosophy and art history at undergraduate and postgraduate levels, including opportunities to explore interdisciplinary themes across the two areas, and to study them in combination with other subjects.

WHY ESSEX?



Philosophy at Essex is internationally recognised for its unique combination of Anglo-American and European continental philosophy



Art history is ranked 6th among UK art history departments (REF 2014)



We are in the top 10 for philosophy research departments in the UK (REF 2014)



We are home to ESCALA, the most important collection of Latin American art in Europe

COURSES

UNDERGRADUATE

- BA Art History +
- BA Art History and History +
- BA Art History and/or with Modern Languages
- BA Film Studies and Art History +
- BA Curatorial Studies +
- BA Literature and Art History +
- BA Philosophy and Art History +
- BA Philosophy +
- BA Philosophy, Religion and Ethics +
- BA Philosophy and History +
- BA Philosophy and Law +
- BA Philosophy and Literature +
- BA Philosophy and Politics +
- BA Philosophy and Sociology +
- BA Philosophy with Human Rights +

POSTGRADUATE - BAND B

- MA Art History and Theory
- MA Curating Contemporary Art
- MA Gallery Studies and Critical Curating
- MA Gallery Studies with Dissertation
- Graduate Diploma in Art History and Theory
- Graduate Diploma in Philosophy
- MA Philosophy and Art History
- MA Philosophy (Continental Philosophy pathway)
- MA Philosophy (Critical Social Theory pathway)
- MA Philosophy (Philosophy and Psychoanalysis pathway)
- MAD, MPhil, PhD Art History and Theory
- MAD, PhD Philosophy

+ This course has an optional year abroad variant

English language requirements

- Undergraduate – IELTS 6.0 overall
- Postgraduate – IELTS 6.0 for Graduate Diplomas, IELTS 6.5 with 6.0 in writing for art history masters courses, IELTS 7.0 for art history research degrees and all philosophy courses

If you don't meet these requirements we offer a range of pre-sessional English courses, please see pages 34-35 for details.

Please note that students who need a Tier 4 visa to study in the UK must meet the UKVI's minimum language requirements

Recent graduate careers

- Research and analysis work
- Galleries
- Museums
- Publishing

Popular modules

Undergraduate

- Art and Ideas
- Philosophy and Religion
- Art in Latin America
- Freud and the Philosophy of the Unconscious
- Art, Sex and Death

Postgraduate

- Philosophy and Psychoanalysis
- Contemporary Critical Theory
- Autonomy, Mental Disorder and Human Rights
- Critique and Curating
- Art, Architecture and Curating

OUR RESEARCH

Art history

- 19th and 20th century European sculpture
- 1960s counterculture
- Activist art
- Art and science
- Contemporary architecture
- History of photography
- History of tattooing
- Renaissance art and architecture

- Theories of the sublime
- Urbanism and the built environment

Philosophy

- Critical theory
- Phenomenology
- Medical humanities
- Classical German philosophy



Some of the biggest names in the field work at Essex, giving you unrivalled access to the best minds in politics. As well as conducting ground-breaking research, your lecturers advise political parties, governments and international NGOs.

WHY ESSEX?

- ➔ UK's leading political science research department
- ➔ Top in the UK for research excellence (REF 2014)
- ➔ Awarded Q-Step Affiliate status to develop quantitative skills
- ➔ 91% student satisfaction (NSS 2015)
- ➔ Awarded the prestigious Regius Professorship in 2013

COURSES

UNDERGRADUATE

- BA Politics **
- BA International Relations **
- BA Philosophy, Politics and Economics **
- BA Economics and Politics **
- BA Elections, Public Opinion and Parties **
- BA Political Economics **
- BA Political Theory and Public Policy **
- BA Politics with Human Rights **

POSTGRADUATE - BAND C

- MA Politics
- MA, MSc Conflict Resolution
- MA, MSc Global and Comparative Politics
- MA Ideology and Discourse Analysis
- MA, MSc, MRes International Relations
- MA, MSc Multilevel Governance in Europe
- MA, MSc, MRes Political Economy
- MA, MSc, Political Science
- MA Political Theory
- MA, MSc Public Opinion and Political Behaviour
- Graduate Diploma Politics
- PhD, PhP Government

* This course has an optional year abroad variant
* This course has an optional placement year variant

English language requirements

- Undergraduate – IELTS 6.0 overall
- Postgraduate – IELTS 6.5 overall

If you don't meet these requirements we offer a range of pre-sessional English courses, please see pages 34-35 for details.

Please note that students who need a Tier 4 visa to study in the UK must meet the UKVI's minimum language requirements

Recent graduate careers

- Government
- Civil service
- Media and journalism
- Voluntary sector
- Political research
- Police and armed forces

Popular modules

Undergraduate

- Authoritarianism and Corruption
- International Security Studies
- Human Rights and Global Justice
- Mass Media and Democracy
- Conflict Analysis

Postgraduate

- Conflict Resolution
- Political Economy
- International Negotiation
- Ideology and Political Discourse
- International Environmental Politics

“ There were two main reasons for deciding to come to Essex. The first was the reputation of the Department of Government, the best department in the study of politics in the United Kingdom and one that is also widely recognised overseas. The second reason was because I had heard the University was one of the most internationally diverse, and I was looking forward to sharing my academic experiences with people from different contexts and backgrounds.

This has been, undoubtedly, a very fulfilling experience and I would recommend for anyone who is interested in politics to study here. ”

Joshua Hurtado, Mexico
MA International Relations

Psychoanalytic studies



We're unique: the only place where under one roof you can find a multifaceted clinical and academic approach to both psychoanalytic and Jungian studies.

WHY ESSEX?

- ➔ 95% student satisfaction rate (NSS 2015)
- ➔ 80% of our undergraduates have found graduate-level study or employment
- ➔ Ranked top 10 in the UK for research quality (REF 2014)
- ➔ The Centre incorporates the Centre for Trauma, Asylum and Refugees

COURSES

UNDERGRADUATE

FdA Therapeutic Communication and Therapeutic Organisations ⁺

BA Psychoanalytic Studies ^{**}

BA Therapeutic Care

POSTGRADUATE - BAND B

MA Psychoanalytic Studies

MA Jungian and Post-Jungian Studies

MA Refugee Care

PG Diploma, MA Management and Organisational Dynamics

Graduate Diploma in Psychodynamic Counselling

PhD Psychoanalytic Studies

PhD Refugee Care

⁺ Optional study abroad year available

⁺ Optional placement year available

⁺ BA top up year available

English language requirements

- Undergraduate – IELTS 6.0 overall
- Postgraduate – IELTS 6.5 for taught courses, IELTS 7.0 for research degrees

If you don't meet these requirements we offer a range of pre-sessional English courses, please see pages 34-35 for details.

Please note that students who need a Tier 4 visa to study in the UK must meet the UKVI's minimum language requirements

Recent graduate careers

- Education
- Youth work
- Health and social care
- Learning support
- Mental health
- Nursing

Popular modules

Undergraduate

- Child, Adolescent and Adult Development
- Trauma in Individuals, Groups and Organisations
- Violence and Projective Processes in Individuals and Society
- Contemporary Therapeutic Practice

Postgraduate

- Dreams and Myths
- Freud in Contexts
- Psychoanalysis of Groups and Organisations
- Context of the Refugee Experience
- Psychosocial Perspectives of Human Rights



“ My ultimate career goal is to work with refugee children and provide therapeutic services. When I was researching graduate courses I came across the MA Refugee Care offered at the University of Essex. This course was different from any other refugee studies programmes that I have seen. It focused on the essential issues relating to refugees and the refugee experience, as well as emphasising therapeutic practices.

From the first day on campus I managed to meet a lot of graduate students from various majors. I am very much enjoying the social experience at the University. ”

Nicky Phelps, United States
MA Refugee Care

► www.essex.ac.uk/int17/cps



Our research is recognised internationally and has an impact across many areas. Our research groups focus on cognitive psychology, sensory and cognitive neuroscience, and social psychology. Undergraduate students take part in this research during their studies.

WHY ESSEX?

- ➔ Exceptional research labs and facilities, including our Centre for Brain Science
- ➔ We're ranked 13th in the UK for our research, and 90% of our research is rated as 'world-leading' or 'internationally excellent' (REF 2014)
- ➔ Courses accredited by the British Psychological Society
- ➔ We are home to an ESRC-accredited Doctoral Training Centre

COURSES

UNDERGRADUATE

- BA, BSc Psychology +
- BSc Psychology with Cognitive Neuroscience +

POSTGRADUATE - BAND C

- MSc Advanced Psychology
- MSc Psychology (conversion course)
- MSc Research Methods in Psychology
- MSc Cognitive Neuroscience
- MSc Cognitive Neuropsychology
- MSc Language and the Brain
- MSD, MPhil, PhD Psychology

+ This course has an optional year abroad variant

English language requirements

- Undergraduate – IELTS 6.0 overall
- Postgraduate – IELTS 7.0 overall

If you don't meet these requirements we offer a range of pre-sessional English courses, please see pages 34-35 for details. Please note that students who need a Tier 4 visa to study in the UK must meet the UKVI's minimum language requirements

Recent graduate careers

- Clinical, forensic, educational and occupational psychology
- Social work
- Mental health care
- Management
- Human resources
- Media and marketing

Popular modules

Undergraduate

- Brain and Behaviour
- Cognitive Psychology
- Developmental Psychology
- Social Psychology
- Placement year

Postgraduate

- Cognitive Neuropsychology of Language
- Advanced Reading Development and Dyslexia
- Advanced Developmental Psychology
- Advanced Social Psychology
- Perception and Cognition



“ The main reason I decided to study at Essex was the University's strong research rating; psychology is a science, so a good research ranking was important to me.

The Department of Psychology is great. First of all, the academic staff are excellent and, whenever you have questions or need something clarified, lecturers are always there to help. The teaching itself is also very good, with aspects about the modules clearly outlined. On the technical side, my department is well equipped and all psychology students have access to great lab facilities, with modern computers and a range of software. ”

Le An Trong Dinh, Norway
BSc Psychology

Sociology and criminology



We embed our innovative and sometimes controversial research into our courses, linking theory with evidence. Our world-leading academics will teach you to have your finger on the pulse of modern society.

WHY ESSEX?

- ➔ 96% student satisfaction (NSS 2015), ranked in the top 10% for UK universities
- ➔ Ranked in the top 30 in the world by QS World University Rankings (2016)
- ➔ Ranked top 10 in the UK for research quality (REF 2014)
- ➔ Awarded Q-Step Affiliate status to develop quantitative skills

COURSES

UNDERGRADUATE

- BA Criminology **
- BA Criminology with Social Psychology **
- BA Communications and Digital Culture **
- BA Sociology **
- BA Sociology and Criminology **
- BA Sociology and Politics **
- BA Sociology with Human Rights **
- BA Sociology with Psychosocial Studies **
- BA Sociology with Social Anthropology **
- BA Sociology with Social Psychology +

POSTGRADUATE - BAND C

- MA Advertising, Marketing and the Media
- MSc Criminology and Socio-Legal Research
- MA Criminology
- MA Sociological Research
- MA Sociology
- MSc Survey Methods for Social Research
- MSc Organised Crime, Terrorism and Security
- MA Sociology and Management
- MPhil, PhD Criminology
- MAD Sociology
- MPhil, PhD Sociology
- PhD Survey Methods

* This course has an optional placement year variant
* This course has an optional year abroad variant

English language requirements

- Undergraduate – IELTS 6.0 overall
- Postgraduate – IELTS 6.5 overall (with all scores 6.0+)

If you don't meet these requirements we offer a range of pre-sessional English courses, please see pages 34-35 for details.

Please note that students who need a Tier 4 visa to study in the UK must meet the UKVI's minimum language requirements

Recent graduate careers

- Paralegal and law
- Probation
- Youth and community work
- Public relations and marketing
- Housing, care, health and welfare services
- Police and community safety

Popular modules

Undergraduate

- Globalisation and Crime
- Race, Class and Gender
- Digital Media and Society
- Social Anthropology
- Policing, Punishment and Society

Postgraduate

- Advertising: Commerce and Creativity
- Digital Economy
- Critical Perspectives on Terrorism and Counter-Terrorism
- Sociology of Human Rights
- Panel Data Methods

“ The Department provides a wonderful, friendly environment for postgraduate study and research. I love the variety of activities such as attending insightful conferences. I am particularly interested in culture, crime and media studies, research on citizenship and identity, and qualitative methods. I find people's perception of crime and how it has evolved throughout history a very interesting area of study. I really enjoy becoming more knowledgeable within my field and delivering unique and original work. ”

Deniz Unan
MA Criminology and Sociology, 2010, PhD Sociology

**BUT DON'T
JUST TAKE OUR
WORD FOR IT**

WE HAVE THE BEST
POLITICS DEPARTMENT IN THE UK. (REF 2014)

**WE'RE
TOP 5**
FOR **SOCIAL SCIENCE**
AND **TOP 20** IN THE UK
FOR RESEARCH
EXCELLENCE.
(REF 2014)

**WE ARE IN THE
TOP 10 FOR**
THE AMOUNT
**WE SPEND ON OUR
SERVICES AND
FACILITIES.**
(GOOD UNIVERSITY GUIDE 2017)

**WE'RE RANKED IN THE TOP
2% OF UNIVERSITIES
IN THE WORLD.**
(QS 2014, THE 2015)

**WE ARE COMMENDED FOR OUR FOCUS
ON THE LEARNING EXPERIENCE.** (QAA 2015)

**OUR STUDENTS
VOTE US IN THE
TOP 10
FOR STUDENT
SATISFACTION.**
(NSS 2013, 2014, 2015)

**WE WERE AWARDED
THE QUEEN'S
ANNIVERSARY PRIZE
IN 2010 FOR
RECOGNITION OF OUR
WORK ADVANCING
HUMAN RIGHTS
ACROSS
THE GLOBE.**

**WE HAVE THE ONLY
REGIUS PROFESSORSHIP** IN POLITICAL
SCIENCE IN THE UK, CONFERRED BY
THE QUEEN.

**WE'RE RANKED IN THE
TOP 25 MOST
INTERNATIONAL
UNIVERSITIES IN THE WORLD.**
(THE 2016)

**OVER 90% OF OUR INTERNATIONAL
GRADUATES WERE IN EMPLOYMENT OR
FURTHER STUDY WITHIN 6 MONTHS OF
GRADUATION**
(DLHE 2014)

Contact details

Colchester Campus

Wivenhoe Park
Colchester CO4 3SQ
United Kingdom
T +44 (0)1206 873333

Southend Campus

Elmer Approach
Southend-on-Sea SS1 1LW
United Kingdom
T +44 (0)1702 328200

International Office
(for general enquiries)
E overseas@essex.ac.uk

Undergraduate admissions
E admit@essex.ac.uk

Postgraduate admissions
E pgadmit@essex.ac.uk

International Academy admissions
E iaapply@essex.ac.uk

English language programmes
E intacad@essex.ac.uk

About this prospectus

This prospectus tries to answer your questions about life and academic provision on offer at the University of Essex. It was prepared in 2016 and refers to courses which will be available in October 2017. Although great care is taken in compiling this prospectus, it is for the general guidance of prospective students only. The University cannot guarantee the provision of all the courses and services in the event of circumstances beyond its control and therefore reserves the right to make variations to the content and method of delivery of programmes, courses and other services and to merge or combine programmes or courses, if such action is reasonably considered to be necessary by the University.

The most up-to-date information in relation to course structures is available on our programme specifications webpages.

► **[www.essex.ac.uk/
programmespecs](http://www.essex.ac.uk/programmespecs)**

The University cannot be held responsible for failure/delay in performing obligations caused by things beyond its reasonable control, such as fire, flood or industrial action. In accepting an offer of a place at the University, you consent to incorporation of this notice as a term of contract between you and the University. The full Procedures, Rules and Regulations of the University are set out in the Charter, Statutes and Ordinances and in the University Regulations, Policy and Procedures.

► **www.essex.ac.uk/int17/regs**

Data for marketing purposes

Data have been selected for marketing purposes but all claims are based on the most current data that were available at the time of print.

Keep up-to-date by following us on Facebook, Twitter and Vimeo:



facebook.com/essexuniio



twitter.com/uessex_intl



vimeo.com/uniofessex

► **www.essex.ac.uk/int17**