

CITY UNIVERSITY OF HONG KONG

# INTERNATIONAL UNDERGRADUATE ADMISSIONS 2021



CITYU HK



香港城市大學 Cityu  
City University of Hong Kong

WORLD



香港城市大學  
City University of Hong Kong

**At CITY UNIVERSITY OF  
HONG KONG the future  
is now.**

**We are young, dynamic,  
creative and innovative,  
just like our students.**

**At CITYU we are training  
the thinkers and  
leaders of tomorrow.**

**#48**

**IN THE WORLD**

**IN THE QS WORLD**

**UNIVERSITY RANKINGS 2021**

**#4**

**IN THE WORLD**

**IN THE QS TOP 50**

**UNDER 50 2021**

**#1**

**“MOST INTERNATIONAL UNIVERSITY”**

**IN THE TIMES HIGHER EDUCATION**

**WORLD UNIVERSITY RANKINGS 2020**







香港城市大學  
City University of Hong Kong

## ENGINEERING

**#16**

US NEWS  
WORLDWIDE

**#1**

US NEWS  
HONG KONG

## COMPUTER SCIENCE

**#13**

US NEWS  
WORLDWIDE

**#1**

US NEWS  
HONG KONG

## BUSINESS

UTD Business School Research 2019

**#27**

WORLD

**#1**

ASIA & PACIFIC

\*according to latest rankings

## AN INTERNATIONAL STUDY EXPERIENCE



Studying in CityU is a truly international experience. Regarded as the "Most International University in the World" by Times Higher Education in 2020, CityU has over 7,000 non-local students and more than 70% of our academic staff are international.



Over 80 nationalities are represented in the CityU student body

## JOINT BACHELOR'S DEGREE PROGRAMME

Explore exciting international opportunities with one of CityU's joint degree programmes.

Working in partnership with other world-renowned universities, CityU offers students a truly international and unique undergraduate education.

Earn two full bachelor's degrees by spending two years at CityU, and another two years at one of our esteemed partner universities.

### CITYU and COLUMBIA UNIVERSITY, USA

[cityu-hk.gs.columbia.edu](http://cityu-hk.gs.columbia.edu)

### CITYU and LEUPHANA UNIVERSITY, GERMANY

[cityu.edu.hk/scm/program/scm-lu.htm](http://cityu.edu.hk/scm/program/scm-lu.htm)

### CITYU and NATIONAL TAIWAN UNIVERSITY, TAIWAN


[admo.cityu.edu.hk/aboutus/joint\\_programme](http://admo.cityu.edu.hk/aboutus/joint_programme)

### CITYU and UNIVERSITY OF EDINBURGH, UK

[cityu.edu.hk/csci/academic-programmes/undergraduate-programmes/joint-ue](http://cityu.edu.hk/csci/academic-programmes/undergraduate-programmes/joint-ue)

### CITYU and UNIVERSITY OF MANCHESTER, UK

[cityu.edu.hk/csci/academic-programmes/undergraduate-programmes/joint-uom](http://cityu.edu.hk/csci/academic-programmes/undergraduate-programmes/joint-uom)

An aerial photograph of Hong Kong's skyline at sunset. The city is densely packed with skyscrapers, many of which are illuminated with warm lights. The Victoria Harbour is visible in the center, with several ships and boats. The sky is filled with dramatic, orange-hued clouds. In the foreground, some green foliage is visible at the bottom right.

**A truly international city, Hong Kong is a vibrant multicultural hub. A centre of global finance and trade, Hong Kong attracts students and professionals from all over the world to live and work in the heart of Asia.**

# ASIA'S WORLD CITY

## CHOOSE HONG KONG

- **A COSMOPOLITAN CITY SURROUNDED BY LUSH MOUNTAINS AND IDYLIC ISLANDS**
- **A MODERN METROPOLIS WITH A RICH CULTURAL HISTORY**
- **AN INTERNATIONAL TRANSPORT HUB AND AN IDEAL GATEWAY TO EXPLORE THE WONDERS OF ASIA**
- **GRADUATE EMPLOYMENT OPPORTUNITIES WITH OVER 9,000 MULTINATIONAL COMPANIES HEADQUARTERED IN HONG KONG**





# CHOOSE CITYU

- INTERNATIONALLY RENOWNED  
FUTURE FOCUSED PROGRAMMES
- ENGLISH AS THE LANGUAGE OF  
INSTRUCTION
- DISCOVERY AND INNOVATION  
FOCUSED CURRICULUM
- WORLD-CLASS ACADEMIC  
FACULTY MEMBERS
- GLOBAL LEARNING AND  
STUDY ABROAD OPPORTUNITIES
- INTERNSHIP AND WORK INTEGRATED  
LEARNING OPPORTUNITIES
- IDEALLY LOCATED IN THE HEART OF  
THE CITY
- WELCOMING AND INTERNATIONALIZED  
STUDENT BODY

# CITYU AT A GLANCE

PROFESSIONAL - CREATIVE - FOR THE WORLD

**7,000+**  
NON-LOCAL  
STUDENTS



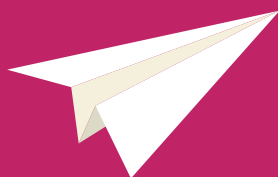
FROM  
**80+**  
COUNTRIES/REGION

**400+**  
STUDENT EXCHANGE  
PARTNER INSTITUTIONS



IN **40+**  
COUNTRIES/  
REGIONS

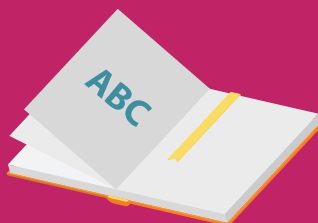
**~1,200**  
IN/OUT EXCHANGE  
STUDENTS A YEAR



TARGET TO SEND  
**65%+**  
OF UNDERGRADUATE  
STUDENTS ON  
INTERNATIONAL  
EXPERIENCES

**9 COLLEGES & SCHOOLS  
OVER 130 PROGRAMMES  
ENGLISH**

AS THE MEDIUM OF INSTRUCTION

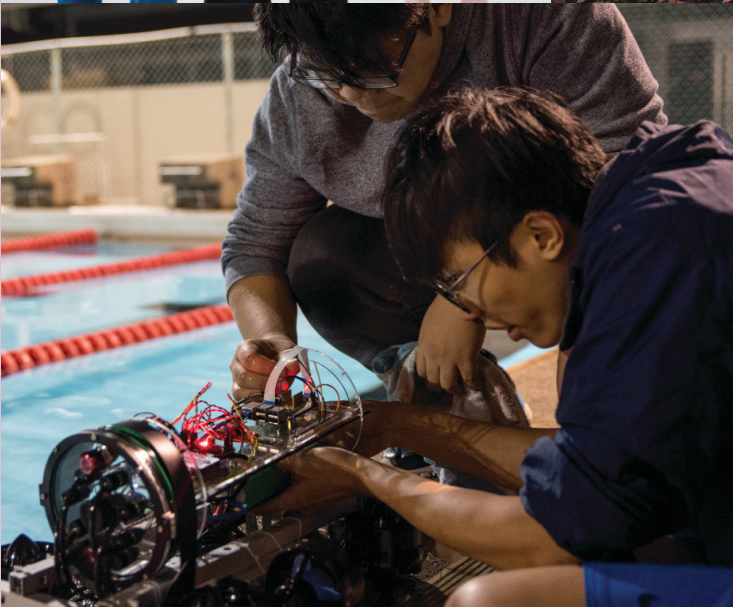


**80+**  
STUDENT  
ASSOCIATIONS  
& SOCIETIES

**40+**  
RESEARCH  
CENTRES

**70%**  
INTERNATIONAL  
ACADEMIC  
FACULTY







## 2021-2022 TUITION FEE AND COSTS\*

### TUITION FEE <sup>a</sup>

HKD140,000

APPROX. USD 18,000

### COST OF LIVING <sup>b</sup>

*Includes meals, local transportations, insurance, books and supplies.*

APPROX. USD 4,600

### ACCOMMODATION

#### ON-CAMPUS <sup>c</sup>

APPROX.  
USD 1,975 <sup>d</sup>

#### OFF-CAMPUS <sup>e</sup>

APPROX.  
USD 5,700-7,000

### TOTAL

APPROX.  
USD 24,575

APPROX.  
USD 28,300 – 29,600

a. Tuition fee for 2021-22 may be subject to further update. For the latest information, please refer to [www.cityu.edu.hk/international](http://www.cityu.edu.hk/international).

b. Actual costs will vary depending on lifestyle choices. Students may also need to budget for overseas exchanges, summer study tours and emergency medical expenses, etc. Fees listed are per annum.

c. Priority will be given to non-local students during the first two years of study.

d. Residence fee for a double room at the student residence on campus per residential year. All fees are subject to annual review.

e. Estimated cost for private renting [Total cost per academic year (2 semesters)].

## SCHOLARSHIPS\*\*

### TOP SCHOLARSHIP <sup>f</sup>

HKD180,000

APPROX. USD 23,000

### FULL TUITION SCHOLARSHIP

HKD140,000

APPROX. USD 18,000

### HALF TUITION SCHOLARSHIP

HKD70,000

APPROX. USD 9,000

\*\*Scholarships for 2021-22 may be subject to further updates

f. Top Scholarship covers annual tuition fee, university-managed accommodation for the first two years and partial living expenses.

You will be automatically considered for a scholarship when you submit an application to CityU. Scholarships will be renewed annually based on the satisfaction of CGPA requirement (i.e. 3.2 and/or above).

## OTHER FUNDING OPPORTUNITIES

### DIVERSITY GRANT <sup>g</sup>

HKD30,000 per annum

APPROX. USD 3,850

### OUTSTANDING ATHLETES ENTRANCE SCHOLARSHIP <sup>h</sup>

Up to HKD160,000 per annum

APPROX. USD 20,500

g. Available only for international students admitted from underrepresented nationalities. Top Scholarship recipients are not eligible to receive a Diversity Grant.

h. Outstanding student athletes who demonstrate their sports achievements at international / continental / regional level can apply for the scholarship.

Other funding opportunities supporting non-local students for engaging in overseas exchanges, global experiences and on-campus activities are also available.

More information from the Global Engagement Office, please visit [cityu.edu.hk/international](http://cityu.edu.hk/international)



## ADMISSION

**Common international qualifications (e.g. IB, GCE-A Level, and/or country specific qualifications) are accepted. A full list of entrance requirements available at <http://www.admo.cityu.edu.hk/intl/international/entreq/>**

**To apply for admission you will need the following:**

- ☐ HIGH SCHOOL CERTIFICATE / DIPLOMA
- ☐ HIGH SCHOOL TRANSCRIPT
- ☐ PUBLIC EXAMINATION  
(E.G. IB, SAT I, GCSE, GCEASL) RESULTS,  
IF AVAILABLE
- ☐ PROOF OF ENGLISH PROFICIENCY  
(TOEFL/IELTS)\*

**Supplementary Documents:**

- ☐ STATEMENT OF PURPOSE
- ☐ PORTFOLIO FOR SCHOOL  
OF CREATIVE MEDIA  
APPLICANTS

---

*TOEFL	Minimum score of 79 on the Internet-based test
IELTS	Minimum overall score of 6.5
GCE	Grade E or above in GCE AL/IAL or AS / IAS English Language, English Literature or English Language and Literature or Grade C / Grade 4 or above in GCSE/GCEOL English/ English Language or English Literature

## KEY APPLICATION DATES

Applications are processed on a rolling-basis.

**APPLICATION OPENS:**

**23<sup>RD</sup> SEP 2020**

**EARLY APPLICATION DEADLINE:**

**15<sup>TH</sup> NOV 2020**

**REGULAR APPLICATION DEADLINE:**

**4<sup>TH</sup> JAN 2021**

## APPLICATION FEE

**APPLICANT MAY CHOOSE UP TO  
THREE PROGRAMMES.**

**USD 58  
HKD 450**

For more information from Admissions Office,  
please visit [cityu.edu.hk/admo](http://cityu.edu.hk/admo)

## PROGRAMMES OF STUDY\*

6

4

4

A

### COLLEGE OF BUSINESS

COMPUTATIONAL FINANCE AND FINANCIAL TECHNOLOGY B.SC.

●

GLOBAL BUSINESS B.B.A.

●

DEPARTMENT OF ACCOUNTANCY

ACCOUNTANCY B.B.A.

●

●

DEPARTMENT OF ECONOMICS AND FINANCE

BUSINESS ECONOMICS B.B.A.

●

●

●

FINANCE B.B.A.

●

●

DEPARTMENT OF INFORMATION SYSTEMS

GLOBAL BUSINESS SYSTEMS MANAGEMENT B.B.A.

●

●

●

INFORMATION MANAGEMENT B.B.A.

●

●

DEPARTMENT OF MANAGEMENT

MANAGEMENT B.B.A.

●

●

DEPARTMENT OF MANAGEMENT SCIENCES

BUSINESS ANALYSIS B.B.A.

●

●

●

BUSINESS OPERATIONS MANAGEMENT B.B.A.

●

●

DEPARTMENT OF MARKETING

MARKETING B.B.A.

●

●

### COLLEGE OF LIBERAL ARTS AND SOCIAL SCIENCES

DEPARTMENT OF ASIAN AND INTERNATIONAL STUDIES

ASIAN AND INTERNATIONAL STUDIES B.SOC.SC.

●

●

DEPARTMENT OF CHINESE AND HISTORY

CHINESE AND HISTORY B.A.

●

●

DEPARTMENT OF ENGLISH

ENGLISH B.A.

●

●

DEPARTMENT OF LINGUISTICS AND TRANSLATION

LINGUISTICS AND LANGUAGE APPLICATIONS B.A.

●

●

TRANSLATION AND INTERPRETATION B.A.

●

DEPARTMENT OF MEDIA AND COMMUNICATION

DIGITAL TELEVISION AND BROADCASTING B.A.

●

●

MEDIA AND COMMUNICATION B.A.

●

DEPARTMENT OF PUBLIC POLICY

PUBLIC POLICY AND POLITICS B.SOC.SC.

●

●

DEPARTMENT OF SOCIAL AND BEHAVIOURAL SCIENCES

CRIMINOLOGY AND SOCIOLOGY B.SOC.SC.

●

●

●

PSYCHOLOGY B.SOC.SC.

●

●

SOCIAL WORK B.SOC.SC.

●

●

### COLLEGE OF SCIENCE

DEPARTMENT OF CHEMISTRY

CHEMISTRY B.SC.

●

●

DEPARTMENT OF MATHEMATICS

COMPUTING MATHEMATICS B.SC.

●

●

DEPARTMENT OF PHYSICS

PHYSICS# B.SC.

●

●

\*Programme information and major allocation criteria (if applicable) are available at [admo.cityu.edu.hk/intl/international/](http://admo.cityu.edu.hk/intl/international/)

#Programme title subject to approval



## COLLEGE OF ENGINEERING



### DEPARTMENT OF ARCHITECTURE AND CIVIL ENGINEERING

ARCHITECTURAL ENGINEERING B.ENG.

CIVIL ENGINEERING B.ENG.

SURVEYING B.SC.

### DEPARTMENT OF BIOMEDICAL ENGINEERING

BIOMEDICAL ENGINEERING B.ENG.

### DEPARTMENT OF COMPUTER SCIENCE

COMPUTER SCIENCE B.SC.

### DEPARTMENT OF ELECTRICAL ENGINEERING

COMPUTER AND DATA ENGINEERING B.ENG.

ELECTRONIC AND COMMUNICATION ENGINEERING B.ENG.

ELECTRONIC AND ELECTRICAL ENGINEERING B.ENG.

INFORMATION ENGINEERING B.ENG.

### DEPARTMENT OF MATERIALS SCIENCE AND ENGINEERING

MATERIALS SCIENCE AND ENGINEERING B.ENG.

### DEPARTMENT OF MECHANICAL ENGINEERING

MECHANICAL ENGINEERING B.ENG.

NUCLEAR AND RISK ENGINEERING B.ENG.

## JOCKEY CLUB COLLEGE OF VETERINARY MEDICINE AND LIFE SCIENCES

BACHELOR OF VETERINARY MEDICINE

### DEPARTMENT OF BIOMEDICAL SCIENCES

BIOLOGICAL SCIENCES B.SC.

BIOMEDICAL SCIENCES B.SC.

## SCHOOL OF CREATIVE MEDIA

### SCHOOL OF CREATIVE MEDIA

CREATIVE MEDIA B.A.

CREATIVE MEDIA B.SC.

NEW MEDIA B.A.S.

## SCHOOL OF DATA SCIENCE

### SCHOOL OF DATA SCIENCE

DATA SCIENCE B.SC.

DATA AND SYSTEMS ENGINEERING B.ENG.

## SCHOOL OF ENERGY AND ENVIRONMENT

### SCHOOL OF ENERGY AND ENVIRONMENT

ENERGY SCIENCE AND ENGINEERING B.ENG.

ENVIRONMENTAL SCIENCE AND ENGINEERING B.ENG.

## SCHOOL OF LAW

BACHELOR OF LAWS (LLB)

**6** 6-Year Programme

**4** Direct Admission to a Major

**4** Admission with an Undeclared Major  
Application made to Department and enter Major after first-year studies

**A** Advanced Standing I Available

## ADVANCED STANDING I

Applicants holding a 13-year school-leaving qualification (including an IB Diploma and GCEAL) or degree transfer students may apply for admission to first-year studies in a degree programme, or admission to a major with Advanced Standing I (non-senior-year). Students admitted with "Advanced Standing I" must achieve a minimum requirement of 90 credit units for graduation, and it is possible to complete the degree in three years.

# GLOBAL ENGAGEMENT OFFICE

(852) 3442 7373 | 3442 8009

[overseas@cityu.edu.hk](mailto:overseas@cityu.edu.hk)



CityU.international



cityu international undergraduate admissions



cityuhk global



[cityu.edu.hk/international](http://cityu.edu.hk/international)

