
Asia's Prestigious University with a Global Recognition

JEJU NATIONAL UNIVERSITY



JEJU NATIONAL UNIVERSITY

WORLD CLASS

WORLD CLASS

JEJU NATIONAL UNIVERSITY

Jeju National University endeavors to become a world-class university alongside Jeju, a free international city in the global era.

Jeju National University
commences its leap forward to
the bigger world beyond Korea.

CONTENTS

- 04 President's Message
- 06 Vision
- 08 Performances
- 10 Global Education Network
- 12 Research Capacity /
Industry-Academy Cooperation
- 14 Educational Environment
- 16 Educational Programs
- 18 Colleges
- 44 Graduate Schools
- 52 Jeju National University Hospital
- 54 Educational Support and Welfare
Facilities
- 60 Organizational Chart
- 62 History
- 64 Campus Map

VISION

Jeju National University leads the world with different levels of vision and strategies.

JNU's Vision

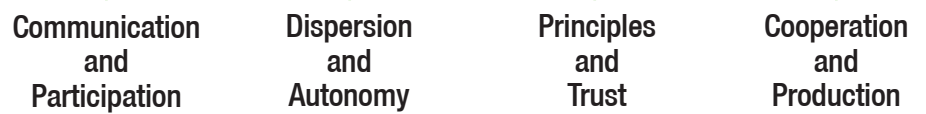
Asia's Prestigious University with a Global Recognition

Challenges Pursued Together, Happy Campus Community



Jump New Unity Project

J Project	Securing a world-class research capacity	Forming a stable financial basis
N Project	Realizing creatively customized education	Strengthening innovative international cooperation
U Project	Materializing shared happiness	Fulfilling sensible university administration



A background image showing the silhouettes of several people standing on a dark hill or rooftop against a bright, golden sunset sky. The sun is low on the horizon, creating a strong backlight effect. One person in the foreground on the right is holding a large, light-colored sheet or map that is partially unfurled. The overall mood is one of contemplation and looking towards the future.

10 Core Tasks

- 01** Gradual fundraising for academic research with graded beneficiaries
- 02** Operation of the '7+1 (i.e. Semester Study Abroad)' Program
- 03** Increase in the employment rates of the graduates (at least the 3rd highest Nat'l Univ.)
- 04** Securing of research and state-run projects worth 250,000,000,000 won (for four years)
- 05** Increased enrollment of international students (608 -> 1,000)
- 06** 150 billion won fundraising for university development
- 07** Establishment of the 'Jeju Industry-Academy Convergence Zone' linked to the Jeju Science Park
- 08** Operation of the Faculty Welfare Program
- 09** Promotion of relocating Jeju National University of Education onto the Ara Campus
- 10** Launch of a consultative body for the Asia-Pacific Island Hub Universities Network

PERFORMANCES

A University with Outstanding Competitiveness

The international competitiveness of Jeju National University has gained an increasing attention. Earning esteemed appraisals in a range of evaluations conducted by the government and the media, Jeju National University earned international recognition for its values and competence as a representative university in Korea.





2014

- Ranked 4th in the Evaluation of the Educational and Financial Conditions of Universities JoongAng Daily
- Ranked 1st in the Evaluation of the Leaders in Industry-University Cooperation (LINC) Centers Ministry of Education
- Selected to implement state-funded 'University of Creative Korea (CK)' Projects Ministry of Education
- Announced as the university with the highest ratio of successful applicants of the Elementary School Teacher Certification Examination
- Awarded a grand prize for the brand with the most popularity JoongAng Daily
- Selected as an institution to implement the state-funded project of creating regional jobs Ministry of Employment and Labor
- Acquired the certification for the capacity to enroll and manage international students Ministry of Education and Ministry of Justice

2015

- Ranked 29th in the Evaluation of Universities JoongAng Daily
- Ranked 5th in the Evaluation of the Educational Conditions of Universities JoongAng Daily
- Selected as a national university with the 'best' performance in state-funded projects for innovation Ministry of Education
- Earned an appraisal of 'highly excellent' for Leaders in Industry-University Cooperation (LINC) Jeju Center for three consecutive years Ministry of Education
- Selected as a hub national university with the most scholarships compared with tuitions
- Selected as a hub national university with the lowest educational expenses per student
- Selected as a hub national university with the most number of full-time faculty

Establishing a Global Education Network

Promoting the academic and student exchanges with the world's prominent universities as well as a variety of its globalization programs, Jeju National University has made strenuous efforts to cultivate global talents who actively respond to the changes of the times and the trends.

Global talents freely exchange ideas with each other and discover new potentials here in Jeju National University.

01

Global Academic Network

Jeju National University networks with 236 universities and 29 institutions in 36 countries (as of November 2015)

02

Student Exchange Programs

Jeju National University exchanges students with universities in such countries as the U.S., Canada, China, Japan, Germany, France, Spain, Mexico, Chile, and Argentina through long-term study programs

03

Growth of International Students

The number of international students enrolled for the undergraduate and postgraduate courses (bachelor's, master's, and doctoral) and the Korean language course offered by Jeju National University has grown annually.



A young man and woman are smiling together at a desk. The man is leaning over the woman, and they appear to be studying or working on a project. There are several books stacked on the desk in front of them. The man is wearing a white and red striped shirt, and the woman is wearing a white lace top. The background is a plain, light color.

04

Global Teachers' University (GTU)

Jeju National University encourages its students majoring in education to complete an international double degree program, acquire a teacher's certification overseas, take overseas training programs, and start their teaching career in other countries.

05

English Language Institute (ELI)

Jeju National University offers English courses for the interns, exchange students, and students taking language courses overseas under the agreement concluded with George Mason University in the US.

06

Support for Overseas Internship and Employment

Jeju National University runs support programs in the US, Canada, China, Japan, and Australia for the students seeking internships or job opportunities.

07

Volunteering Abroad

Jeju National University provides medical and educational aid in underdeveloped countries including Laos.

Glocal Industry-Academy Cooperation in the Region with Forward-Thinking Research

Jeju National University endeavors to enhance both national and regional competitiveness by carrying out over 600 research projects annually for the national and local governments as well as corporations.



State-Funded and State-Designated Core Research Institute

- Jeju branch of the Korea Basic Science Institute
- Subtropical Horticulture Research Institute and Institute for Nuclear Science & Technology



Professional Talents for Industry-Academy Cooperation to Lead Future Industries

- Management Center for the University of Creative Korea (CK) Project
Smart Grid-Clean Energy / Subtropical Agriculture and Life Sciences / Cultural Contents of Jeju / Biodiversity-Based Natural Cosmetics
- Leaders in Industry-University Cooperation (LINC) Jeju Center
- Six Management Centers (or Teams) for the Brain Korea (BK) 21 Plus Project
- Project Management Centers Cultivating Manpowers
Wind Energy / Convergence Design / Global Trade / Open-Type ICT Convergence
- Project Management Center Cultivating Women in Science, Engineering, and Technology (WISSET) Manpowers
- State-Funded Projects for Universities Fostering Startups
- State-Funded Projects for the Innovation Center for Engineering Education



Development of Cutting-Edge Technologies of Converging New Industries to Enhance Local Values

- Project to Expand Test Sites to Demonstrate Wind Turbine Facilities
- Management Center for the Jeju Sea-Grant Project
- Project to develop auto parts and operational systems to invigorate the electric vehicle industry
- Jeju Water Resource Research Team
Research on the interpretation of Jeju-type water circulation and the establishment of a water resource management system
- Management Center for the Flatfish / Broadleaf Bamboo / Horseback Riding / Western Vegetables Regional Innovation System (RIS) Projects

Research & Development for the Next Generation Growth Engine

- Golden Seed Project
Six research teams developing seeds of genetic resources including mandarin oranges, seafood, and livestock
- Project to Develop Technologies to Conquer Cancer
- Woo Jang-Choon Project
Developing therapeutic models for obstinate diseases using Jeju pigs
- Technological Support Project for Culture and Tourism Contents Industry
- Management Centers for the Science, Technology, and Society (STS) Project and the Social Sciences Korea (SSK) Research Support Project

EDUCATIONAL ENVIRONMENT

World-Class Educational Environment from Admissions to Graduation

The educational environment of Jeju National University has already been ranked as the highest in Korea according to the recent university evaluations. To help students learn more efficiently and lead a productive campus life, Jeju National University reinvigorated their welfare services and a state-of-the-art learning environment.



Smart and Green Campus Surrounded by Beautiful Pristine Nature



Jeju National University established a top-grade system of integrating wire and wireless communications and won the title of a state-sponsored Green Campus



Affordable Tuitions

Jeju National University requires nearly half the amount of tuitions of private universities, or 3,780,000 won on yearly average in 2015, and was ranked 1st on the list of Hub National Universities with the Lowest Tuitions.



Generous Scholarships

Jeju National University grants scholarships equating to 67% of the total tuitions (as of 2015), and 85% of the student population receive financial aid through scholarship programs.



New Educational and Research Support Facilities

- Constructed the new Veterinary College building
- Constructed the new main building of the College of Applied Life Sciences
- Built the state-of-the-art Digital Library
- Built the Sustainable Agriculture Research Institute
- Located the Jeju branch of the Korea Institute of Industrial Technology
- Remodeled the Indoor Gymnasium
- Built an additional Student Dormitory
- Constructed the new Music Hall



EDUCATIONAL PROGRAMS

Educational Programs Designed to Foster World-Class Talents

Jeju National University has instilled curricula designed to cultivate talented individuals with their respective expertise. Jeju National University creates the environment where the professors and the students can prosper together while conducting joint researches, and where the students and the university pursue shared growth and achieve their goals.



Support Programs for Teaching and Learning Methods

Jeju National University has developed online content suitable for the students with improved teaching and learning methods as well as curricula specifically tailored to the job-related majors.

A high-angle photograph of a university campus. In the foreground, a young man in a dark sweater is smiling and looking up at someone off-camera. He is holding a dark book. To his left, another person's legs and feet are visible. In the background, a woman in a maroon sweater is walking. The ground is a light-colored, textured pavement. There are several semi-transparent colored boxes overlaid on the image: a blue box in the top left, a grey box in the middle right, a green box in the bottom left, and a grey box in the bottom right.

Programs to Strengthen Educational Capability


Basic Education + Education on Global Manners

▶ Strengthened Employment Capability

- Basic education through courses on current affairs and humanities with consultations
- Education on global manners through foreign language courses and a student exchange program
- Strengthening of employment capability through job-related courses for each grade, employment consultations, and international and domestic internships

Industry-Academy Cooperation

Jeju National University operates 'Track', an industrial program customized for such enterprises as Kakao, Jeju Semiconductor, Korea Midland Power, Doarm Engineering, and Topec Engineering.



Jeju National University established a successful industry-academy cooperation model with the participants of its Track Program exhibiting an employment rate of over 70% or benefiting from scholarships.

Educational Accreditation Programs

Jeju National University operates Educational Accreditation Programs (in the fields of engineering, medicine, architecture, and law) to accomplish substantial improvement across the educational fields and foster competent and creative talents who will make active contributions to a knowledge-based society in the future.



Colleges of JEJU NATIONAL UNIVERSITY

College of Humanities

College of Natural Sciences

College of Social Sciences

College of Engineering

College of Economics & Commerce

Teachers College

College of Education

College of Veterinary Medicine

College of Applied Life Sciences

College of Nursing

College of Ocean Sciences

College of Arts & Design

College of HUMANITIES



COLLEGE OF HUMANITIES

Instillation of Prescience on Humanity and the World

The College of Humanities educates and conducts research on linguistics, literature, philosophy, history, and sociology. Fostering new intellectuals with refined knowledge on humanities, the College of Humanities aims to help realize the ideals of humanism ultimately. Graduates from the College of Humanities have made significant contributions to the development of both national and international communities, not to mention the local community, providing expertise in various fields.

In particular, Jeju National University has run the 'Program to Foster Specialists on Cultural Contents, Planning, and Promotion' together with Jeju Special Self-Governing Province since 2010 in order to offer more job opportunities for those majoring in the humanities and social sciences.

The Department of Sociology has conducted research on the 'Public Management of Nature and Sustainable Life-Style', participating in the state-funded 'Social Sciences Korea (SSK)' Program over the past three years. The research grew to be a medium-scale focused research project in September 2014. Furthermore, the 'Project Management Group Cultivating Creative Talents on Local Cultural Contents' led by the Department of Korean Language & Literature and the Department of History was selected to receive national support under the state-funded 'University for Creative Korea (CK)' Program this year. With this as a momentum, the College of Humanities will lead the education of talented individuals, specializing in cultural content through creative courses on humanities.



Korean Language & Literature

Japanese Language & Literature

English Language & Literature

Chinese Language & Literature

German Studies

History

Sociology

Philosophy



College of SOCIAL SCIENCES



COLLEGE OF SOCIAL SCIENCES

Education of Insightful Individuals for the Shared Ideal of Humanity

The educational goal of the College of Social Sciences is to foster talented individuals with the knowledge in different fields as well as the expertise that the administrative, political, and journalistic spheres require from the leaders in the 21st century. Students are educated to be creative leaders for the nation and the local communities by learning a logical and systematic way of thinking and the ability to apply it.



Public Administration

Political Science & Diplomacy

Journalism & Public Relations

Evening Course

Public Administration



College of ECONOMICS & COMMERCE



COLLEGE OF ECONOMICS & COMMERCE

Education of Creative Leaders of the World

The College of Economics & Commerce has worked to achieve its goal of fostering the talented individuals who possess international competitiveness, exhibit creativity and competence, and contribute to the national and local development. To this end, it has established a state-of-the-art educational infrastructures, secured outstanding educators and research outcomes, cooperated with the industries, and strengthened academic exchanges with renowned universities in Korea and overseas. It has made additional efforts to nurture creative and harmonious leaders by implementing different levels of employment strategies, offering students with opportunities to build global competence through studies and internships overseas, running project management centers to foster expertise in different fields, and encouraging students to participate in on-site training programs.



Business Administration

Tourism Management

Accounting

International Trade

Economics

Tourism Development

Management Information Systems

Evening Course

Business Administration





COLLEGE OF EDUCATION

Actualization of Desirable Values and a Creative Future through Education

The College of Education has pursued the goal of materializing the educational ideals stipulated in the Education Acts and nurturing prominent secondary educators who actively respond with passion to the globalized and diversified future. More than 6,000 graduates from the College of Education have played a pivotal role in advancing the secondary education not just in Jeju but also in many other regions across Korea. Many of them have also made great contributions to the national and social developments while working in the academia, media, financial industries, research institutes, and enterprises.



Korean Language Education

English Education

Social Studies Education

Social Studies Education
Geography Education

Ethics Education

Mathematics Education

Faculty of Science Education

Physics Education
Biology Education

Computer Education



College of APPLIED LIFE SCIENCES



COLLEGE OF APPLIED LIFE SCIENCES

Development of Groundbreaking Technologies for the National Wealth

The College of Applied Life Sciences has developed new theories in the fields of biotechnology, natural science, and social science, and applied them to the agricultural sector to improve productivity. Its ultimate goal is to educate specialists who contribute to the welfare of humanity. In 2004, the Ministry of Education appointed the college as the operator of its Project Management Center Cultivating Subtropical Agriculture and Animal Biotechnology Project Manpowers to develop customized educational programs and opportunities for the students to increase their experiences specializing in many different fields. In 2005, the Ministry of Agriculture, Food, and Rural Affairs designated the college as a training institute for its 'Track' System that offers on-site educational programs to encourage agricultural entrepreneurship. In February 2006, the college was evaluated as an 'excellent' educational institute specializing in agriculture (by the Korea Council for University Education). Furthermore, the college has educated talented individuals by running the Subtropical and Tropical Organism Gene Bank funded by the Korea Science and Engineering Foundation, the Regional Research Center (RRC) funded by the National Research Foundation of Korea, and the Export Promotion Research Organization for Korean Citrus funded by the Ministry of Agriculture, Food, and Rural Affairs.



Faculty of Bioscience & Industry

Plant Resource & Environment
Horticultural Science

Faculty of Biotechnology

Biomaterials
Molecular Biotechnology
Animal Biotechnology

Applied Economics



College of OCEAN SCIENCES



COLLEGE OF OCEAN SCIENCES

Borderless Challenge to Lead the Future of Humanity

The College of Ocean Sciences set a goal of studying, educating, and developing the theories and their applications in the ocean sciences, including the understanding of the marine environment, the use and development of marine resources, and the use and conservation of marine space. It has also worked to contribute to the advancement of the local, national, and international communities by nurturing talented individuals.

In particular, it has concentrated on research in the ocean sciences that Jeju has the potential for regional competitiveness. Since 1999, it has led state-funded projects, including the Brain Korea (BK) 21, the New University for Regional Innovation (NURI), the Education of Regional Water Industrial Specialists, and the POST-BK 21. Currently, students participating in the state-funded Leaders in Industry-University Cooperation (LINC) program receive lots of financial aid and subsidies through scholarships. It has also become the cradle for the ocean sciences both nominally and virtually by establishing the cluster of 'Jeju Special Self-Governing Province, regional industries, universities, and research institutes' under the provincial vision for the development of the maritime and fisheries industries.



Faculty of Marine Biomedical Sciences

Marine Life Sciences
Aquatic Life Medicine

Marine Industry & Maritime Police

Earth & Marine Sciences

Environmental Engineering

Civil Engineering

Ocean System Engineering





COLLEGE OF NATURAL SCIENCES

Exploration into the Scientific Technologies for the Developed Societies

The College of Natural Sciences led the establishment of the Bioscience Park to cultivate the health, beauty, and biological industries that are specialized regional strategic industries based on biological technologies. It also took the lead in creating the Jeju Science Park, one of the seven core projects promoted by Jeju Province to turn itself into a 'Free International City', in order to foster high-tech industries specializing in the information and biological technologies. In the process, the College of Natural Sciences actively helped advance the regional industries, generate new growth engines, create jobs, and add values to the local products.

The prominent faculty of the College of Natural Sciences have promoted domestic and international academic exchanges as well as research to educate highly specialized individuals which the local community requires. In order to solidify its status as the leader of a knowledge-based information society in the 21st century, it will keep pioneering the reform and ensure the students can attain a successful future.



Physics

Biology

Chemistry & Cosmetics

Chemistry
Cosmetics

Food Science & Nutrition

Mathematics

Computer Science & Statistics

Faculty of Human Ecology & Welfare

Child & Human Welfare
Housing & Family welfare

Clothing & Textiles

Faculty of Exercise & Sports Science

Sports Science
Leisure Sports



College of ENGINEERING

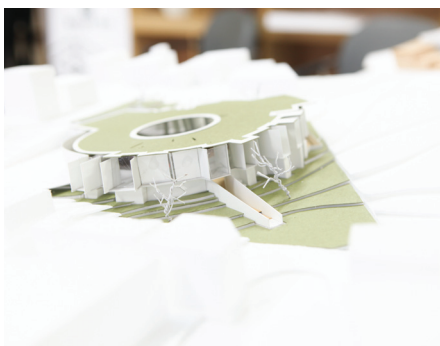


COLLEGE OF ENGINEERING

Creation of a New Sphere through the Contact of Science with Art

The College of Engineering has worked to achieve its goal of educating highly-skilled, talented students with strong teamwork capabilities, serious work ethic, and global awareness. These students will be able to make creative applications of the theories and professional skills of applied sciences and cutting-edge technologies that are the fundamentals of the nation's industrial advancements.

It has also earned international accreditation of its educational programs and conducted research and development on future-oriented industries at its Innovation Center for Engineering Education, Research Institute of Advanced Technology, and Machine Shop. In particular, it has contributed greatly to the regional development by offering technological consultations to the local businesses by studying the development of local resources.



Food Bioengineering

Mechanical Engineering

Mechatronics Engineering

Telecommunication Engineering

Nuclear & Energy Engineering

Computer Engineering

Electronic Engineering

Electrical Engineering

Chemical & Biological Engineering

Faculty of Architecture

Architectural Engineering

Architecture



TEACHERS COLLEGE



TEACHERS COLLEGE

Nurturing of Well-Equipped Educators for Genuine Education

The National Teachers College, which had educated nearly 5,900 primary educators since its foundation as the Temporary Educational Institute for Primary Educators in 1946, was reborn as the Teachers College of Jeju National University in March 2008.

Jeju National University has since become the first national university with an unrivaled educational institute capable of fostering both the primary and secondary educators. The national subsidies for the consolidation of the two institutes and plenty of incentives given for state-funded projects are reinvested to raise the quality of the educational programs.



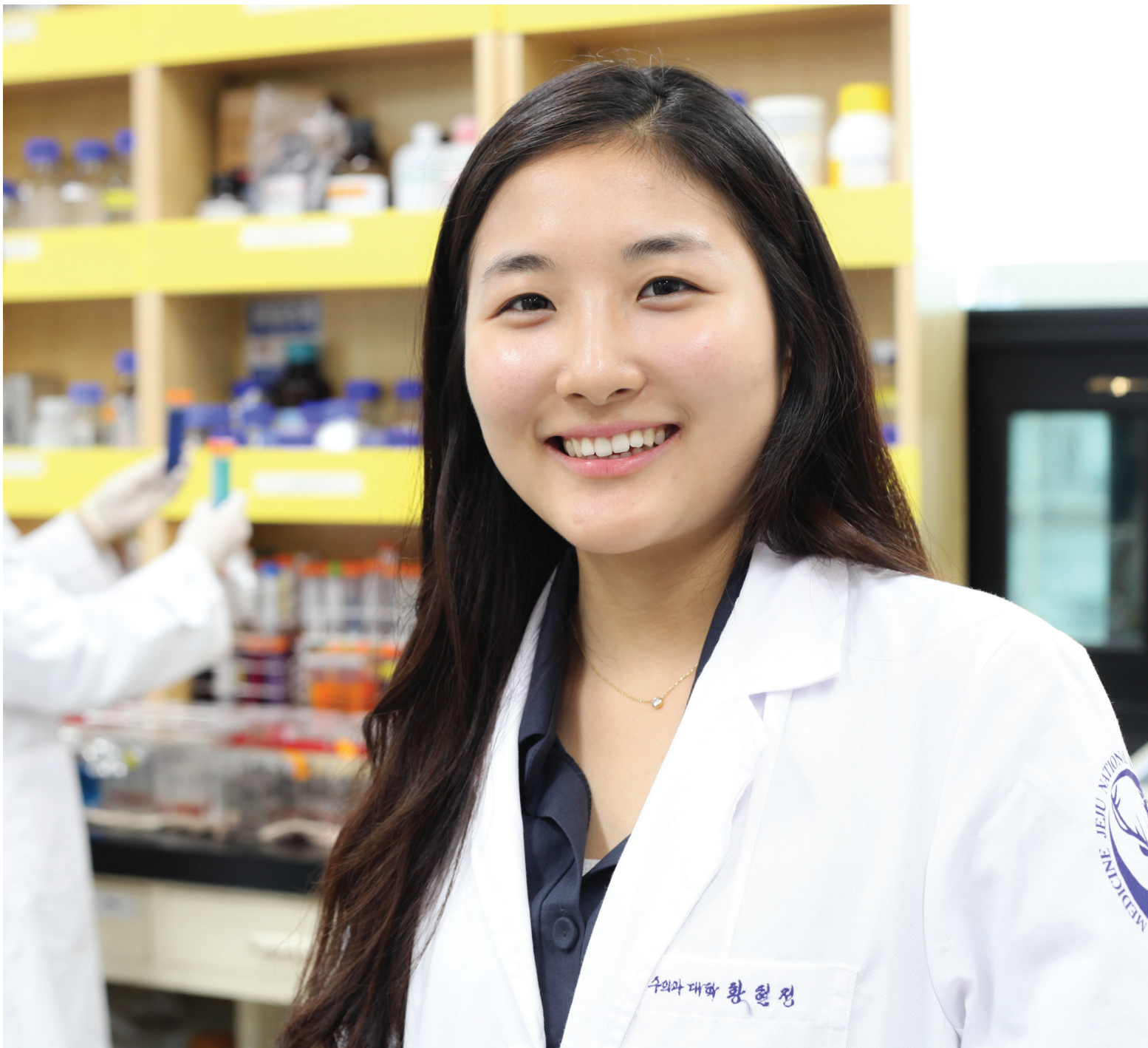
Elementary Education

- Ethics Education
- Korean Education
- Mathematics Education
- Social Studies Education

- Science Education
- Physical Education
- Music Education
- Art Education
- Practical Arts Education
- Education
- English Education
- Computer Education



College of VETERINARY MEDICINE



COLLEGE OF VETERINARY MEDICINE

Fostering of Creative and Forward Thinking Veterinarians

The College of Veterinary Medicine was separated as an independent institute from the College of the Applied Life Sciences in 2008. In September 2014, the new building with four floors and one basement level was completed in its current location with a gross area of 5,578m². It is equipped with the Veterinary Teaching Hospital, Training Ranch in Yongang, Veterinary Medical Research Institute, Laboratory Animal Center, and Jeju Wildlife Rescue Center.

The veterinary science is extended to a wide range of fields, including clinical veterinary medicine, livestock hygiene, pet diseases, wild animal diseases, water-borne animal diseases, communicable diseases, and food and environmental hygiene. It is also a future-oriented academic sphere that are closely related to the cutting-edge bioindustries that involve studies on new substances, artificial organs, transformational animals, interspecies organ transplants, stem cells, and tumors.



Pre-Veterinary Medicine

Veterinary Medicine



College of NURSING



COLLEGE OF NURSING

Continuing Education for Globally-Talented Nursing Specialists

The College of Nursing has fostered care partners that offer creative and scientific services based on the respect for humanity and the understanding of cultural diversity. The college encourages nurses to enhance their competences through a continued self-innovation with the goal of establishing the society where all people lead the healthiest life.

To respond to the changes in the domestic and international health environments, the College of Nursing endeavors to educate nursing specialists with global competence who can offer their services in any part of the world. The courses of the College of Nursing are also focused on improving the research abilities of the students, cultivating sympathetic students who communicate effectively with the patients, and cooperating with others for self-development.



Nursing



College of ARTS & DESIGN



COLLEGE OF ARTS & DESIGN

Cultivation of Inspirational Artistry for Cultural Industries Worldwide

Jeju National University established the College of Arts & Design in 2012 to concentrate on educating specialized talents that are not only skilled in the artistic expression, creation, and theories, but also possess a strong personal style and knowledge.

The Faculty of Music educates the functional aspect of music performances and provides stability through music. It also runs courses for full-time teachers, contributes to the artistic activities in the local communities, and further matures and develops the creativity and artistic instincts at international level. The ambition of the Faculty of Music is to serve a pivotal role in the musical revitalization and emotional advancement of the entire nation.

The Faculty of Fine Arts offers majors in Korean Painting, Painting, and Sculpture. It offers educational courses on the overall theories of arts and their applications to foster intellectual and creative artists and art educators. The basic training courses of the Faculty of Fine Arts help improve the individual creativity and expressiveness and learn about the interrelations in the studies of sculpture to improve the artistic skills, and eventually promote the experimental attitudes, unique expressions, and comprehensive artistic understanding. The Faculty of Fine Arts also offers holistic education that incorporates the pursuit of truth and social demand through the formative arts. The Major of Multimedia Design of the Faculty of Industrial Design offers courses on the design analysis, design planning, design concepts, and design realization to activate 'Capstone' designs, run regional design projects, participate in the domestic and international contests, and offer on-site training for more job opportunities in the specialized fields, including public, environmental, visual, product, UX, 3D, and CG designs. The wide array of educational methods and the multidisciplinary courses of the Major of Multimedia Design nurture 'creative designers' suitable for the contemporary era. The Major of Culture & Formative Design offers educational courses on fiber design, metal design, ceramic design, and product design, as well as the converged courses on the afore-mentioned techniques, for the development of the cultural and tourism industries. Students majoring in Culture & Formative Design can have uniquely tailored experiences using a variety of materials and will better understand the culture and industries.



Faculty of Music

Composition, Voice & Piano
Orchestral Instruments

Faculty of Fine Arts

Korean Painting
Painting
Sculpture

Faculty of Industrial Design

Multimedia Design
Culture & Formative Design



School of Medicine

Education of Sympathetic Professionals Devoted to Health Promotion and Medical Breakthroughs



The goal of the School of Medicine is to research and develop profound academic knowledge and its applications for the development of the nation and humanity with the pursuit of truth, justice, and creation. Specialists educated in the School of Medicine are devoted to improving the health of people and curing their diseases based on a strong work ethic and passion for their field. The competent health practitioners from the School of Medicine also continuously seek further expertise and self-development to fulfill the high standards required in the contemporary era.

To achieve its educational goal, the School of Medicine runs the M.D. and Ph.D. courses as well as other programs including overseas volunteering and training courses. In the 2010 Evaluation of Pre-Schools/Schools of Medicine, the School of Medicine of Jeju National University obtained the 'Five-Year Accreditation' which is considered as the highest level of certification. The School of Medicine has now become the focal point for the regional medical education and training of life sciences despite the newness of its history.

Currently, the School of Medicine has 160 enrolled students and over 120 professors. Jeju National University Hospital, the clinical hospital of the School of Medicine, is the tertiary institute with state-of-the-art facilities and outstanding staff that serves as a pivotal medical institute in charge of the health of all locals. Students taking the courses of the School of Medicine learn medical knowledge and techniques on the health and diseases of people in a self-disciplinary manner. Graduates of this program will have specialized skills with creative research ability. Students from the School of Medicine will be able to offer genuine services as well as holistic treatments based on respect for life in various regions nationwide, contributing to the development of the local communities and humanity.

Law School

Incubation of Impartial and Incisive Intellect Enlightening the World



The Law School has worked to offer a higher level of legal aids and keep abreast of the recent globalizing trends. In the process, the Law School aims to materialize the ideals of Jeju National University including 'Truth, Justice, and Creation', as well as the regional goal of turning Jeju into a Special Self-Governing Province, a Free International City, and an Island of World Peace. To this end, the Law School fosters legal specialists who have in-depth knowledge and expertise in international judicial affairs to meet national and regional demand.

The Law School offers the best-possible educational environment through its Library Specializing in Laws, the Advanced IT Room, the E-Lecture Room, the Seminar Room, the Mock Court, and the most up-to-date dormitory. On top of that, it utilizes subsidies funded by five authorities including Jeju Special Self-Governing Province to provide scholarships, overseas training courses, mentoring, and welfare services to the students. The Law School has also secured prominent full-time professors while appointing renowned scholars in different fields for such posts as chair-professors or professors emeritus. It also offers profound curricula to educate specialized lawyers with global awareness.

On top of that, it has signed academic agreements with the Law Schools of Korea's Seoul National University, America's George Mason University and Hawaii University, and Japan's Soka University. It has also secured plenty of training sites including large law firms in Korea and overseas.

The Law School will foster professional lawyers that lead a knowledge-based society in the globalizing era, and eventually make great contributions to the nation and the local communities as a mecca to the retraining of law specialists.

School of Interpretation & Translation

Education of Professional Interpreters and Translators with International Insights



The Graduate School of Interpretation and Translation has worked to achieve its goal of fostering professional interpreters and translators that will take the pivotal role in the era of globalization and informatization. The Graduate School of Interpretation and Translation (with the Korean-English, Korean-Chinese, Korean-Japanese, and Korean-German majors) not only educates specialized knowledge on foreign languages and cultures in an optimal environment, but also transfers a higher level of practical techniques and knowledge necessary for the interpretation and translation.

The courses include adequate training opportunities as well as academic research. The educational facilities including the Simultaneous Interpretation Booths, the Study Rooms, and the Seminar Room help the students to meet various demands by offering resourceful programs. The degrees are given after completing the educational courses with more than 18 hours of training per week as well as strict deliberations by the professors.

There is a growing demand for the interpreters and translators in Jeju with the establishment of a Free International City and the increasing international conferences located by the International Convention Center Jeju as well as the listing of Jeju Island as a World Natural Heritage site. The career path of those who complete the courses is therefore expected to expand. To respond actively and systematically to the recent trends, the Graduate School of Interpretation and Translation runs the Center of Translation and Interpretation, or COTI. The COTI appoints the graduates as researchers to offer translation and interpretation services, get involved in the business for international cooperation, and provide specialized linguistic courses. It also fulfills its role as a center for on-the-job training by offering field visits to the enrolled students.

Graduate School

A Repository of Knowledge and Extended Research for the Advancement of Humanity

Master's Programs

- 2 Faculties (8 Majors)
- 49 Departments
- 6 Academy-Institute Cooperative Programs
- 7 Interdisciplinary Programs

General Programs

Field of Humanities & Social Sciences

Departments: Korean Language & Literature / Business Administration / Economics / English Language & Literature / Sociology / Agricultural Economics / Accounting / Chinese Language & Literature / International Trade / Public Administration / German Studies / Political Science & Diplomacy / Tourism Management / Tourism Development / Japanese Language & Literature / Management Information Systems / History / Philosophy / Journalism & Public Relations

Field of Natural Sciences

Departments: Horticulture / Fishery / Biology / Agriculture / Earth & Marine Sciences / Chemistry / Food Science & Nutrition / Mathematics / Computer Science & Statistics / Home Management / Clothing & Textiles / Nursing / Biotechnology / Biomaterials Engineering / Marine Biomedical Sciences / Biomedical & New Medicine Development / Animal Biotechnology

Field of Science & Engineering

Faculty: Applied Energy System (**Majors:** Mechanical Engineering, Energy Chemical Engineering, Electrical Engineering, Electronic Engineering, and Physics)

Field of Engineering

Faculty: Wind Energy Engineering (**Majors:** Wind Energy Mechanical System, Wind Energy Electrical & Control System, and Wind Energy Ocean & Civil Engineering)

Departments: Food Bioengineering / Telecommunication Engineering / Environmental Engineering / Computer Engineering / Civil Ocean Engineering / Architectural Engineering / Ocean System Engineering / Mechatronics Engineering

Field of Arts & Sports

Departments: Exercise & Sports Sciences / Fine Arts / Music

Field of Medicine

Departments: Veterinary Medicine / Medicine

Academy-Institute Cooperative Programs

Korea Institute of Energy Research (KIER)

Faculty: Applied Energy System (**Majors:** Mechanical Engineering, Energy Chemical Engineering, Electrical Engineering, Electronic Engineering, and Physics) / Wind Energy Engineering (**Majors:** Wind Energy Mechanical System, Wind Energy Electrical & Control System, and Wind Energy Ocean & Civil Engineering)

Departments: Architectural Engineering / Mechatronics Engineering

Korea Atomic Energy Research Institute (KAERI)

Faculty: Applied Energy System (**Majors:** Mechanical Engineering, Energy Chemical Engineering, Electrical Engineering, and Electronic Engineering)

Departments: Food Bioengineering / Telecommunication Engineering / Computer Engineering / Architectural Engineering / Mechatronics Engineering

Korea Basic Science Institute (KBSI)

Faculty: Applied Energy System (**Majors:** Energy Chemical Engineering, Electrical Engineering, Electronic Engineering, and Physics)

Departments: Chemistry / Biology / Food Science & Nutrition / Food Bioengineering / Biotechnology / Earth & Marine Sciences / Environmental Engineering / Mechatronics Engineering

Korea Institute of Machinery & Materials (KIMM)

Faculty: Applied Energy System (**Majors:** Mechanical Engineering, Electrical Engineering, and Electronic Engineering) / Wind Energy Engineering (**Majors:** Wind Energy Mechanical System, Wind Energy Electrical & Control System, and Wind Energy Ocean & Civil Engineering)

Departments: Computer Engineering / Mechatronics Engineering

Rural Development Administration (RDM)

Departments: Agriculture / Horticulture / Agricultural Economics / Veterinary Medicine / Food & Bioengineering / Biomaterials Engineering / Animal Biotechnology

Korea Research Institute of Bioscience & Biotechnology (KRIBB)

Departments: Agriculture / Biotechnology / Biology / Food Science & Nutrition / Food Bioengineering / Biomaterials Engineering / Animal Biotechnology

JEJU NATIONAL UNIVERSITY

Interdisciplinary Programs

Biomedical Engineering

Faculty: Applied Energy System (Majors: Mechanical Engineering, Electrical Engineering, Electronic Engineering, and Physics)

Departments: Medicine / Telecommunication Engineering

Koreanology

Departments: Korean Language & Literatures / Sociology / History

Atmospheric and Oceanic Sciences

Departments: Fishery / Ocean System Engineering / Environmental Engineering / Civil Ocean Engineering / Chemistry / Earth & Marine Sciences

Finance & Information Science

Departments: Computer Science & Statistics / Economics / Mathematics

Advanced Convergence Technologies

Faculty: Applied Energy System (Major: Electronic Engineering)

Departments: Mechatronics Engineering / Food Bioengineering / Chemistry / Ocean System Engineering / Biomaterials Engineering / Animal Biotechnology / Veterinary Medicine

Converged Studies on Graphic Design

Departments: Business Administration / Management Information Systems / Computer Education

Major: Media Studies

Converged Studies on Industrial Design

Departments: Tourism Management / Electrical Engineering

Major: Media Studies

GRADUATE SCHOOL



Doctoral Programs

- 5 Faculties (18 Majors)
- 45 Departments
- 6 Academy-Institute Cooperative Programs
- 5 Interdisciplinary Programs

General Programs

Field of Humanities & Social Sciences

Faculty: Language Education (Majors: Korean Education, English Education, and Primary English Education) / Social Education (Majors: Social Studies Education, Geographic Education, and Primary Social Studies Education) / Moral and Ethics Education (Majors: Ethics Education and Primary Moral Education)
Departments: Korean Language & Literature / Business Administration / English Language & Literature / Sociology / Agricultural Economics / Accounting / Chinese Language & Literature / International Trade / Public Administration / Political Science & Diplomacy / Tourism Management / Tourism Development / Japanese Language & Literature / Management Information Systems / History / Philosophy / Journalism & Public Relations / Law / Education

Field of Natural Sciences

Faculty: Science Education (Majors: Physics Education, Biologic Education, Computer Education, Primary Science Education, and Primary Practical Arts Education)
Departments: Horticulture / Fishery / Biology / Agriculture / Earth & Marine Sciences / Chemistry / Food Science & Nutrition / Mathematics / Computer Science & Statistics / Home Management / Clothing & Textiles / Biotechnology / Biomaterials Engineering / Marine Biomedical Sciences / Biomedical & New Medicine Development / Animal Biotechnology

Field of Science & Engineering

Faculty: Applied Energy System (Majors: Mechanical Engineering, Energy Chemical Engineering, Electrical Engineering, Electronic Engineering, and Physics)

Field of Engineering

Departments: Food Bioengineering / Telecommunication Engineering / Environmental Engineering / Computer Engineering / Civil Ocean Engineering / Ocean System Engineering / Mechatronics Engineering

Field of Arts & Sports

Departments: Exercise & Sports Sciences

Field of Medicine

Departments: Veterinary Medicine / Medicine

Academy-Institute Cooperative Programs

Korea Institute of Energy Research (KIER)

Faculty: Applied Energy System (Majors: Mechanical Engineering, Energy Chemical Engineering, Electrical Engineering, Electronic Engineering, and Physics)
Departments: Mechatronics Engineering

Cooperative Program: Specialized Wind Energy

Korea Atomic Energy Research Institute (KAERI)

Faculty: Applied Energy System (Majors: Mechanical Engineering, Energy Chemical Engineering, Electrical Engineering, and Electronic Engineering)
Departments: Food Bioengineering / Telecommunication Engineering / Computer Engineering / Mechatronics Engineering

Korea Basic Science Institute (KBSI)

Faculty: Applied Energy System (Majors: Energy Chemical Engineering, Electrical Engineering, Electronic Engineering, and Physics)
Departments: Chemistry / Biology / Food Science & Nutrition / Food Bioengineering / Biotechnology / Earth & Marine Sciences / Environmental Engineering / Mechatronics Engineering

Korea Institute of Machinery & Materials (KIMM)

Faculty: Applied Energy System (Majors: Mechanical Engineering, Electrical Engineering, and Electronic Engineering)
Departments: Computer Engineering / Mechatronics Engineering

Cooperative Program: Specialized Wind Energy

Rural Development Administration (RDM)

Departments: Agriculture / Horticulture / Agricultural Economics / Veterinary Medicine / Food & Bioengineering / Biomaterials Engineering / Animal Biotechnology

Korea Research Institute of Bioscience & Biotechnology (KRIBB)

Departments: Agriculture / Biotechnology / Biology / Food Science & Nutrition / Food Bioengineering / Biomaterials Engineering / Animal Biotechnology

Interdisciplinary Programs

Biomedical Engineering

Faculty: Applied Energy System (Majors: Mechanical Engineering, Electrical Engineering, Electronic Engineering, and Physics)
Departments: Medicine / Telecommunication Engineering

Koreanology

Departments: Korean Language & Literatures / Sociology / History

Atmospheric and Oceanic Sciences

Departments: Fishery / Ocean System Engineering / Environmental Engineering / Civil Ocean Engineering / Chemistry / Earth & Marine Sciences

Specialized Wind Energy

Faculty: Applied Energy System (Majors: Mechanical Engineering, Electrical Engineering, and Electronic Engineering)
Departments: Mechatronics Engineering / Civil Ocean Engineering / Ocean System Engineering / Earth & Marine Sciences

Advanced Convergence Technologies

Faculty: Applied Energy System (Majors: Electronic Engineering)
Departments: Mechatronics Engineering / Food Bioengineering / Chemistry / Ocean System Engineering / Biomaterials Engineering / Animal Biotechnology / Veterinary Medicine

GRADUATE SCHOOL

Integrated Master's and Doctoral Programs

- 1 Faculty (5 Majors)
- 35 Departments
- 6 Academy-Institute Cooperative Programs
- 4 Interdisciplinary Programs

General Programs

Field of Humanities & Social Sciences

Departments: English Language & Literature / Public Administration / Business Administration / Agricultural Economics / Tourism Management / Accounting / Management Information Systems / Tourism Development / History / Japanese Language & Literature

Field of Natural Sciences

Departments: Agriculture / Horticulture / Biotechnology / Fishery / Earth & Marine Sciences / Biology / Chemistry / Mathematics / Food Science & Nutrition / Clothing & Textiles / Marine Biomedical Sciences / Biomaterials Engineering / Animal Biotechnology / Biomedical & New Medicine Development / Home Management

Field of Science & Engineering

Faculty: Applied Energy System (Majors: Mechanical Engineering, Energy Chemical Engineering, Electrical Engineering, Electronic Engineering, and Physics)

Field of Engineering

Departments: Food Bioengineering / Telecommunication Engineering / Environmental Engineering / Computer Engineering / Civil Ocean Engineering / Ocean System Engineering / Mechatronics Engineering

Field of Arts & Sports

Departments: Exercise & Sports Sciences

Field of Medicine

Departments: Veterinary Medicine / Medicine

Academy-Institute Cooperative Programs

Korea Institute of Energy Research (KIER)

Faculty: Applied Energy System (Majors: Mechanical Engineering, Energy Chemical Engineering, Electrical Engineering, Electronic Engineering, and Physics)
Departments: Mechatronics Engineering

Korea Atomic Energy Research Institute (KAERI)

Faculty: Applied Energy System (Majors: Mechanical Engineering, Energy Chemical Engineering, Electrical Engineering, and Electronic Engineering)
Departments: Food Bioengineering / Telecommunication Engineering / Computer Engineering / Mechatronics Engineering

Korea Basic Science Institute (KBSI)

Faculty: Applied Energy System (Majors: Energy Chemical Engineering, Electrical Engineering, Electronic Engineering, and Physics)
Departments: Chemistry / Food Science & Nutrition / Food Bioengineering / Biotechnology / Earth & Marine Sciences / Environmental Engineering / Mechatronics Engineering

Korea Institute of Machinery & Materials (KIMM)

Faculty: Applied Energy System (Majors: Mechanical Engineering, Electrical Engineering, and Electronic Engineering)
Departments: Computer Engineering / Mechatronics Engineering

Rural Development Administration (RDM)

Departments: Agriculture / Horticulture / Agricultural Economics / Veterinary Medicine / Food & Bioengineering

Korea Research Institute of Bioscience & Biotechnology (KRIBB)

Departments: Agriculture / Biotechnology / Food Science & Nutrition / Food Bioengineering

Interdisciplinary Programs

Biomedical Engineering

Faculty: Applied Energy System (Majors: Mechanical Engineering, Electrical Engineering, Electronic Engineering, and Physics)
Departments: Medicine / Telecommunication Engineering

Koreanology

Departments: Korean Language & Literatures / Sociology / History

Atmospheric and Oceanic Sciences

Departments: Fishery / Ocean System Engineering / Environmental Engineering / Civil Ocean Engineering / Chemistry / Earth & Marine Sciences

Advanced Convergence Technologies

Faculty: Applied Energy System (Majors: Electronic Engineering)
Departments: Mechatronics Engineering / Food Bioengineering / Chemistry / Ocean System Engineering / Biomaterials Engineering / Animal Biotechnology / Veterinary Medicine

Graduate School of Education

· 2 Departments / 31 Majors

Department of Education

· 19 Majors

Educational Administration / Consultation and Psychology / Korean Education / English Education / Japanese Education / Ethics Education / Social Studies Education / Historical Education / Geographic Studies Education / Mathematics Education / Physics Education / Biologic Education / Chemical Education / Domestic Science Education / Computer Education / Nutrition Education / Physical Education / Fine Arts Education / Music Education

Department of Primary Education

· 12 Majors

Primary Moral Education / Primary Korean Education / Primary Mathematics Education / Primary Social Studies Education / Primary Science Education / Primary Physical Education / Primary Music Education / Primary Fine Arts Education / Primary Practical Arts Education / Primary Education / Primary English Education / Primary Computer Education

Graduate School of Business Administration

Master's Programs

· 7 Departments

Business Administration / Accounting / Tourism Management / International Trade / Real-Estate Economics / Management Information Systems / Tourism Development

Graduate School of Public Administration

Master's Programs

· 4 Departments / 3 Majors

Public Administration (Majors: General Administration, Local Autonomy, and Social Welfare) / Law / Politics & Diplomacy / Journalism and Public Relations

Graduate School of Industry

Master's Programs

· 22 Departments / 3 Majors

Environmentally-Friendly Agriculture / Horticulture / Animal Resources / Fishery / Aquaculture / Earth & Marine Sciences / Machinery Engineering / Energy Engineering / Electronic Engineering / Electric Engineering / Telecommunication Engineering / Computer Engineering / Civil Engineering / Architectural Engineering / Environmental Engineering / Food Bioengineering / Environmental Biotechnology / Marine Life Sciences / Agricultural Economics / Industrial Design (Majors: Visual Design, Engineering Design, and Industrial Design) / Wind Energy Engineering / Horse Industry

Graduate School of Social Education

Master's Programs

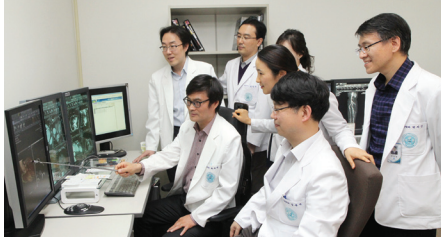
· 3 Departments

Storytelling / Psychotherapy / Natural and Cultural Heritage Education

Graduate School of Public Health

Master's Programs

Department of Public Health



JEJU NATIONAL UNIVERSITY HOSPITAL

A Comprehensive Medical Center with a Pristine Natural Environment
and the Most Advanced Medical Service

**JEJU NATIONAL UNIVERSITY
HOSPITAL**



www.jejunuh.co.kr

—
**Aran 13-gil 15 (Ara-1Dong), Jeju-si,
Jeju Self-Governing Province, 63241 Korea**
TEL (+82 64) 717 1114
FAX (+82 64) 757 8276

The concept of medical service is changing with the system of an open medical market at hand. An increasing emphasis has been placed on the quality of medical service as competition is expected to become fierce when overseas hospitals with high quality service and expertise enter the domestic market. Jeju National University, having the highest level of accreditation granted by the Ministry of Health and Welfare, recently extends its service from the basic medical treatment to a satisfactory level of holistic care rather than focusing only on the treatment just as in the old system.

It has also made concerted efforts to offer an opportunity of holistic care as well as a comprehensive medical service equating to that of advanced hospitals with competitive strategies in the US, Singapore, and Thailand.

Nicknamed the 'Hospital in the Forest' after its relocation to

the current site surrounded by Jeju's pristine nature in 2009, the hospital has every potential to become a representative national university hospital in Korea with its state-of-the-art equipment, highly skilled staff, and patient-oriented service.

Location Aran 13-gil 15 (Ara-1Dong), Jeju-si, Jeju Self-Governing Province, 63241 Korea

Size Land Area: 81,262㎡ / Total Gross Area: 81,602.48㎡ / Six floors and two basement levels

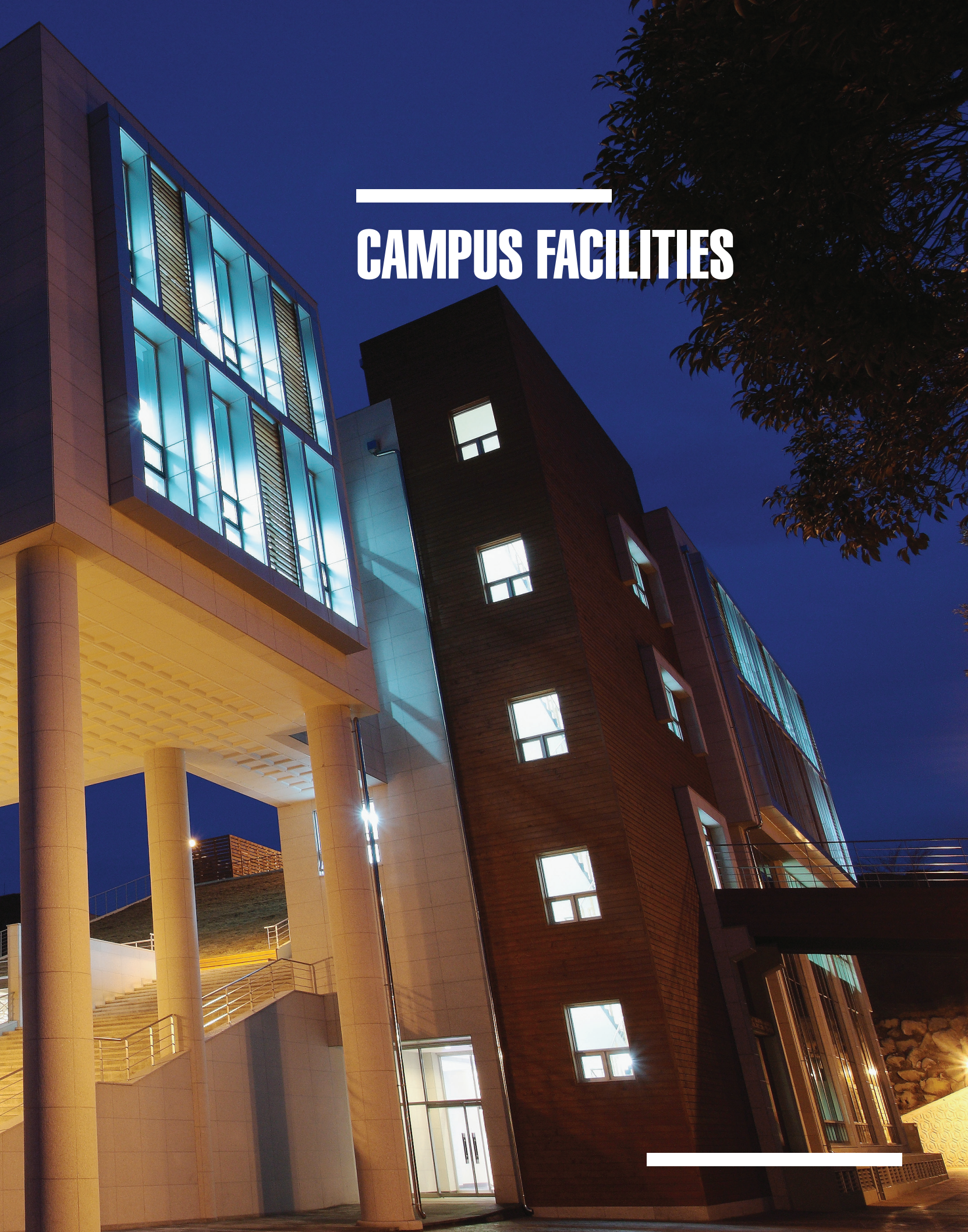
Outpatient Clinic 24 Departments

Number of Beds: 650 Jeju Local Cancer Center / Regional Cardio-Cerebrovascular Disease Center / Regional Rheumatism & Degenerative Arthritis Center / Mental Health Improvement Center / Emergency Medical Center / Health Improvement Center, etc.





CAMPUS FACILITIES





CAMPUS FACILITIES



Research Institutes

A Research-Centered University Striving for the Development of Humanity

State-Designated Core Research Institutes

Institute for Nuclear Science & Technology / Subtropical Horticulture Research Institute

State-Designated Cooperative Research Institutes

Jeju Green Environment Support Center (designated by the Ministry of Environment) / Jeju Center for Korea Basic Science Institute (designated by the Ministry of Science, ICT, and Future Planning) / Bio Industry Center (Designated by the Ministry of Trade, Industry, and Energy)

Research Institutes

Research Institute of Advanced Technology / Tourism, Business, and Economic Research Institute / Educational Science Research Institute / Research Institute for Basic Science / Law & Policy Research Institute / Institute for Social Science Research / Veterinary Medical Research Institute / Research Institute for Subtropical Agriculture and Animal Biotechnology / Institute of Humanities / Elementary Education Research Institute / Tamla Culture Research Institute / Institute of Peace Studies / Marine Science Institute / Medical Science Research Institute / World Environmental and Island Institute / Sustainable Agriculture Research Institute / Institute for Kim Chang-In Practical Philosophy

Affiliated Institutes of Industry-Academy Cooperation Foundation

Entrepreneurship Education Center / Business Incubator Center / Jeju Digital Contents Research Center (DCRC) / Center for Environmentally-Friendly Agricultural Product Certification / Jeju Center for Genetic Evaluation of Cultured Fish Species / Science, Technology, and Society Research Center / Management Center for Offshore Wind Demonstration Site Development Project / Jeju Special Self-Governing Province Rural Revitalization Support Center / Good Computer Education Research Center / Indigenous Microorganism Research Center / Fish Vaccine Research Center / Next Generation Agricultural Leader Education Business Group

Research Institutes

Medical Science

Environment & Public Health Center / Medical Convergence Technology Center

BT

Scientific Technology Center for Citrus & Flowers / Subtropical & Tropical Organism Gene Bank / Stem Cell Research Center / Research Center for Cosmetic Science / Biotechnology Regional Innovation Center / Jeju Water Resources Research Center / Horse Industry Specialist Education Center

Engineering

Test & Evaluation Research Center for Clean Energy Development / Research Center for Electric Energy / Smart Grid Research Center / Augmented Reality Research & Development Center / Printed Electronics Technology Research Center / Mobile Applications Center / Management Center for Electric Vehicle Project

Asia

Asia Community Research Center

Regional Policy

International Financial Center / Jeodo Island Research Center / Molding Research Center / Storytelling Research & Development Center / Gambling & Addictions Research Center



Educational Support Facilities

Sports Promotion Center
Journalism & Media Center
Central Laboratory
Online Training Center for Teachers

Central Library

The Central Library and its branches in the Law School, the School of Medicine, and the College of Education with a total gross area of 14,621m² have 2,477 seats for an individual study and 1,583 types of domestic and international journals and periodicals as well as 1,201,157 books. Its Academic Information System enables a facilitated search and use of materials. The Central Library has concentrated on digitizing its system by offering 85,438 electronic materials including the original academic papers released in Korea and overseas as well as e-books and e-learning materials on its homepage.

Continuing Education Center

The Continuing Education Center with an independent building built in the most up-to-date fashion runs more than 70 programs in five courses including Fine Arts, Foreign Languages, Arts, Professional Skills, and Sport for All for the lifelong education of the members of the local communities.

The special courses endorsed by the local authorities educate the locals on a range of subjects including fine arts, professional knowledge systematically. The Continuing Education Center contributes to self-realization, job creation, and social integration by fostering talented individuals that will lead a knowledge-based society in the 21st century.

Information Telecommunication Center

Established in 1985, the Information Telecommunication Center has done its utmost to progress Jeju National University by digitizing the academic administration, supporting the digitization of educational and research outcomes, building the on-campus intranet, assisting e-learning courses, offering an ultrahigh speed research network, and establishing the U.Campus. The center achieved the speed of 700Mbps to provide a stable service and realized an uninterrupted operational environment despite the errors by forming a dual system with a high performance. It also actualizes the brand-new service through the portal system and the information system run for the academic and administrative affairs.

The Inter-University E-Learning Center of Jeju National University was designated as the first regional branch in Korea in 2003. It now serves as the central headquarters of the 10 regional Inter-University E-Learning Centers nationwide. It also runs the Online Training Center for Teachers to offer extended opportunities for the general public as well as the elementary, middle, and high school teachers.

Foreign Language Institute

The Foreign Language Institute aims to apply a range of teaching and learning methods as well as their applications in order to help the students respond actively to globalization with international insights and outstanding linguistic abilities. The Foreign Language Institute utilizes its prime facilities and courses to educate forward thinking global intellectuals with ambitious goals.

Main programs include the special courses offered eight times annually and the liberal arts courses offered regularly. The institute also holds mock TOEIC tests six times a year and mock TOEIC contests twice a year. During the vacation, it runs such programs as English camps (for elementary and middle school students), training courses for public employees, and other on- or off-campus courses.

Social Service Center

The Social Service Center was founded in March 2011 for the purpose of establishing the public spirit on campus. The center has offered educational courses on social service and developed a range of programs including the Volunteering Contest and the Ara Volunteer Group. Supporting the volunteering programs with specific action plans, the center has made a strenuous effort to build a cooperative network with the local communities as well as the external institutes that helps solidify the culture of providing aid to others.

Support Center for the Handicapped Students

The Support Center for the Handicapped Students was established on the 3rd floor of the Student Union Hall in September 2008 to provide convenient services to the students in need of special assistance who are enrolled for the undergraduate and postgraduate programs of Jeju National University. The center especially helps the disabled students receive financial aid through scholarships while connecting them with the helpers on campus. It also allows the students with special needs to rent motorized wheelchairs and laptop computers free of charge, have the books or papers they need for the academic courses be delivered from the library, and use alternative learning materials developed by the center. The center endeavors to improve its programs by reflecting the suggestions made by the students in regular consultations and meetings. Additionally, the center takes the lead in realizing holistic education by offering the utmost conveniences to the students in special needs, while encouraging them to participate in school activities more actively.



CAMPUS FACILITIES



Attached Facilities

Attached Facilities for Academic and Cultural Research in the Global Era

Center for International Language and Culture Education / Ara Muse Hall

The Center for International Language and Culture Education serves as an all-inclusive 'Art Hall' that offers courses on the Korean language and culture for the international students and Jeju natives residing in other countries, foreign language courses for the members of a Free International City in the global era, and cultural courses for the global citizens. It is a four-story building with a gross area of 4,118.025m² that is equipped with the Ara Muse Hall (443 seats available), lecture rooms, and a cafeteria.

Golf Driving Range

The Golf Driving Range with the field ranging nearly 33,000m² boasts a 300-yard carry distance. It is equipped with a putting course and bunkers, a lecture room for the theoretical and technical education, and the swing analysis room with the devices helpful for correcting the swinging postures. It not only serves as an educational facility, but is also opened to the faculty, students, alumni, and nearby residents, popularizing the sport and contributing the development of golf-related tourism industries.

Unipark

The Unipark, a training center opened in August 2000, is used to hold educational events including lectures by invited speakers on the development of the university as well as training programs for the faculty and students. Located adjacent to the beautiful coast of Seogwipo, the Unipark provides outstanding scenic views of the Seopseom and Beomseom Islands near the popular coastal area nicknamed Seogwipo Chilsimni. The training center is equipped with 24 guest rooms, a seminar room, and a small meeting room.

International Center

The International Center was opened in November 2004. The three-story building with a gross area of 3,332.2m² has the most up-to-date facilities including the Large Conference Room and the Seminar Room optimized for small- and medium-sized international conferences and seminars, as well as a guesthouse with 40 rooms available for those coming from outside the university. It is the venue for the networking with the world's prominent scholars, professors, and specialists visiting Jeju, as well as the venue for international exchanges and cooperation through academic research at the conferences and seminars.

University Museum

The University Museum was opened in 1967 and has since worked for the exhibition, preservation, research, and education of the history and cultural assets of Jeju as well as those of Jeju National University. It has collected over 40,000 relics and artifacts, ranging from state-designated Important Folklore Materials including the Naewatdang Mushindo to the archeological, historical, folklore, and antique materials of high academic and artistic values. The museum comprises five Permanent Exhibition Rooms, one Special Exhibition Room, two Outdoor Exhibition Sites, three Storage Rooms, and one Audiovisual Room. The Permanent Exhibition Rooms exhibit the collections under such themes as the History of Jeju National University, the Sea of Jeju, the Land of Jeju, the People of Jeju, and the Ancient Documents on Jeju. The Special Exhibition Room is used for special exhibitions on a range of cultural themes related to Jeju. Recently, the museum arranged a variety of cultural programs not only for the faculty and students but also for the general public, serving as a regional cultural infrastructure.

Training Ship

The Training Ship 'Ara' helps foster technological talents that will take the pivotal role of developing the fisheries industry of Korea by providing the students with training courses on the safe operation of sailing boats. The student sailors of the Training Ship are educated with the expertise specializing in the fields of maritime and fisheries by participating in multiple research projects conducted for the rational development and preservation of marine resources each year. The Training Ship contributes greatly to enhancing the quality of education and reinforcing the research abilities that will eventually help strengthen the international competitiveness of the nation's fisheries and maritime sectors in the 21st-century order of the Exclusive Economic Zone ranging 200 nautical miles.



Welfare & Service Facilities

Advanced Welfare Facilities

Student Union Hall

The Student Union Hall was newly established in August 1993 for the healthy activities of the student representatives and the convenient campus life. The building with a gross area of 6,322.8m² has four floors with one basement level. Inside the hall exist nearly 80 rooms for the free activities of students including the office of the Student Body and the offices of campus clubs. The hall also offers convenient services for the students through the Consumers Cooperative (i.e. the dining hall, convenience store, Halla cafeteria, stationary store, book store, hairdressers, opticians, photo studio, and cosmetics shop).

University Dormitory

The University Dormitory offers a comfortable homelike residence with secondary learning facilities such as the Computer Room, Study Room, and Seminar Room, and a range convenient facilities including the Fitness Center, Gym, and Lounge. When the Build Lease Transfer (BLT) project of a new dormitory building is completed in 2018, it is expected to offer the most optimal environment for 3,400 student residents to concentrate on learning while fostering the intellectual, ethical, and social values in a trendy setting.

General Service Center

The General Service Center was opened in 2000 to offer a customized administrative service to the students, faculty, and general public by treating tasks with urgency. The center provides a 'one-stop' service that addresses a range of administrative documents in the same place. The service that the center provides includes issuing certificates related to the enrollment, credits, expulsion, leave of absence, course completion, and graduation, accepting applications for the leave of absence or re-enrollment, distributing student ID cards, and consulting the visitors on the available services, as well as responding to the inquiries made via phone, post, fax, or on the Internet.

Health Improvement Center

The Health Improvement Center was established to facilitate the projects required to manage the health conditions of the students and the faculty, and to offer a primary care or an early diagnosis. The center has a doctor's office, casual room, health improvement room, checkup room, consultation room, and stabilization room to help lead a healthy campus life. It also offers educational courses as well as consultations on sexual harassment, prostitution, sexual violence, and domestic violence to correct and provide accurate sexual education, creating a safer campus.

Faculty Welfare Center (BTO Apartment Complex)

The Faculty Welfare Center is an apartment complex constructed in the Build, Lease, and Transfer (BLT) fashion to raise the level of occupational satisfaction of the faculty, the main driving force of the development of the university, and to respond to demand for cultural welfare and convenient facilities. The apartment complex can accommodate 168 households (135.5m² for 48 households, 62.8m² for 64 households, 29.8m² for 56 households) in the five four-story buildings with a gross area of 13,133m². Offering a variety of welfare facilities (including the child care facility, convenience store, and laundry store), parking sites capable of accommodating more than 130 vehicles, and trail paths, the Faculty Welfare Center helps secure the competitive edge of Jeju National University.

Other Attached Facilities

- Jeju National University Elementary School
- Jeju National University Middle School
- Jeju National University High School
- In-Service Training Center for Teachers
- Research Center Attached to College of Applied Life Sciences
- Physical Director Training Center Attached to College of Natural Sciences
- Machine Shop Attached to College of Engineering
- Teachers Training Center
- Veterinary Teaching Hospital
- Jeju Bio-Industry Center

Organizational Chart As of January 2016

ORGANIZATIONAL CHART

General Status

Number of Students

Total 11,391
Undergraduate 9,744
Postgraduate 1,647

Number of Faculty and Staff

Total 1,062
Professors 629
Administrative Staff 327
Teaching Assistants 106

Number of Graduates

Total 70,435
Colleges 62,219
Graduate Schools 8,216

Facilities

Building Area 339,550m²
Campus Area 1,598,839m²

Headquarters

3 Offices, 1 Bureau, and
8 Presidential Units

Research Facilities 42

Support Facilities 48

Other Facilities 2

Annexed Schools 3

Corporations 3

Undergraduate 12 Colleges

11 Faculties (24 Majors)
51 Departments (14 majors)

Postgraduate 10 Graduate Schools

Master's Programs

- 2 Faculties (8 Majors) and 49 Departments
- 6 Academy-Institute Cooperative Programs and
7 Interdisciplinary Cooperative Programs

Doctoral Programs

- 5 Faculties (18 Majors) and 45 Departments
- 6 Academy-Institute Cooperative Programs and
5 Interdisciplinary Cooperative Programs

Integrated Master's and Doctoral Programs

- 1 Faculty (5 Majors) and 35 Departments
- 6 Academy-Institute Cooperative Programs and
4 Interdisciplinary Cooperative Programs

President

Vice President for Ara Campus

Vice President for Sara Campus

Professors' Association and Board of Trustees

Committee of Academic Affairs

University Headquarters

Office of Academic Affairs

- Division of Education Affairs
- Division of School Affairs

Office of Student Affairs

- Division of Student Welfare
- Division of Admission Management

Office of Planning

- Division of Planning & Evaluation

Bureau of General Administration

- Division of General Affairs
- Division of Finance
- Division of Facilities

Presidential Units

- Headquarters of Industry-Academy Research
 - Division of Industry-Academic Cooperation
 - Research Support Center
- Strategic Headquarters on Recruitment
- Center for International Affairs
- Business Management Foundation
- Center for Public Relations and Publishing
- Institute of Liberal Education
- Leaders in Industry-University Cooperation (LINC) Jeju Center
- Entrepreneurship Support Foundation

Colleges

- College of Humanities
- College of Social Sciences
- College of Economics & Commerce
- College of Education
- College of Applied Life Sciences
- College of Ocean Sciences
- College of Natural Sciences
- College of Engineering
- Teachers College
- College Veterinary Medicine
- College of Nursing
- College of Arts & Design

General Graduate Schools

- Graduate Schools

Specialized Graduate Schools

- Graduate School of Education
- Graduate School of Business Administration
- Graduate School of Public Administration
- Graduate School of Industry
- Graduate School of Social Education
- Graduate School of Public Health

Professional Graduate Schools

- Graduate School of Interpretation & Translation
- School of Medicine
- Law School

Special Corporations

- Jeju National University Hospital
- Jeju National University Industry-Academy Cooperation Foundation

Foundation

- Jeju National University Development Fund

Annexed Schools

- Jeju National University High School
- Jeju National University Middle School
- Jeju National University Elementary School

Others

- Reserved Regimental Force
- Consumers Cooperative

Research Facilities

Research Institutes ^{19 Institutes}

- Tamla Culture Research Institute
- Law & Policy Research Institute
- Tourism, Business, and Economic Research Institute
- Institute of Peace Studies
- Institute for Nuclear Science & Technology
- Research Institute for Subtropical Agriculture and Animal Biotechnology
- Marine Science Institute
- Research Institute of Advanced Technology
- Research Institute for Basic Science
- Educational Science Research Institute
- Medical Science Research Institute
- Subtropical Horticulture Research Institute
- Elementary Education Research Institute
- Institute of Humanities
- Institute for Social Science Research
- Veterinary Medical Research Institute
- World Environmental and Island Institute
- Sustainable Agriculture Research Institute
- Institute for Kim Chang-In Practical Philosophy

Research Centers ^{23 Centers}

- Scientific Technology Center for Citrus & Flowers
- Biotechnology Regional Innovation Center
- Molding Research Center
- Medical Convergence Technology Center
- Subtropical & Tropical Organism Gene Bank
- Test & Evaluation Research Center for Clean Energy Development
- Stem Cell Research Center
- International Financial Center
- Jeju Island Research Center
- Research Center for Electric Energy
- Research Center for Cosmetic Science
- Horse Industry Specialist Education Center
- Environment & Public Health Center
- Smart Grid Research Center
- Storytelling Research & Development Center
- Augmented Reality Research & Development Center
- Printed Electronics Technology Research Center
- Jeju Water Resources Research Center
- Mobile Applications Center
- Asia Community Research Center
- Gambling & Addictions Research Center
- Management Center for Electric Vehicle Project
- Typhoon Research Center

Support Facilities ^{48 Facilities}

- Central Library
 - Division of Acquisition & Processing
 - Division of - Data Management
- University Museum
- Information Telecommunication Center
- University Dormitory
- Foreign Language Institute
- Central Laboratory
- Journalism & Media Center
- Continuing Education Center
- Science Education for Gifted Students
- Sports Promotion Center
- General Service Center
- Women Into Science and Engineering (WISSET) Program Jeju Center
- Innovation Center for Engineering Education
- Legal Clinic Center
- Korean Language and Culture Center
- Online Training Center for Teachers
- Support Center for the Handicapped Students
- Jeju Wildlife Rescue Center
- Ocean Leisure Sports Center
- Laboratory Animal Center
- Sorieoulim Music Mentoring Center
- Center for Jejuans in Japan
- Social Service Center
- Convergence Design Development Center
- Teacher Training Center
- Management Center for Global Teachers' University (GTU) Project
- Management Center for Green Campus Project
- Archives
- Management Center for Food and Nutrition Project
- Employer-Supported Child Care Center
- Tourism Software Specialist Incubation Center
- Management Center for Open-Type ICT Convergence Project
- Project Management Center Cultivating Smart Grid & Clean Energy Manpowers
- Project Management Center Cultivating Subtropical Agriculture and Animal Biotechnology Manpowers
- Project Management Center Cultivating Creative Talents on Local Cultural Contents
- Project Management Center Cultivating Biodiversity-Based Natural Cosmetics Manpowers
- In-Service Training Center for Teachers
- Research Center Attached to College of Applied Life Sciences
- Training Ship Ara
- College of Ocean Science Auxiliary Management Center for Ship Operation
- Physical Director Training Center attached to College of Natural Sciences
- Jeju Science and Technology Development Center
- Machine Shop Attached to College of Engineering
- Teachers Training Center
- Veterinary Teaching Hospital
- Center for Interpretation & Translation Attached to Graduate School of Interpretation & Translation
- Center for Reinforcement of Law School Capacity
- Reserve Officers' Training Corps (ROTC)

History

The Great and Glorious History of JNU
Enhanced Jeju's Prestige



HISTORY

1950's

- 1952. 05 Established and opened Cheju Elementary University
- 1955. 04 Elevated to a 4-Year University

1960's · 1970's

- 1962. 03 Designated as a National University
- 1964. 03 Relocated the building of the Department of Scientific Agriculture to Seogwipo
- 1977. 08 Started constructing the incorporated Ara Campus
- 1978. 12 Authorized to establish General Graduate Schools and Graduate School of Education
- 1979. 12 Relocated the Departments of Agriculture and Fisheries to the Ara Campus



1980's · 1990's

- 1980. 02** Relocated the Departments to the incorporated Ara Campus
- 1982. 03** Elevated to a comprehensive university
- 1984. 03** Opened attached schools (Middle and High Schools)
- 1988. 03** Separated the College of Social Sciences into the College of Law and the College of Economics & Commerce
- 1989. 03** Separated the College of Science & Engineering into the College of Natural Sciences and the College of Engineering
- 1989. 11** Authorized to establish the Graduate School of Business Administration
- 1990. 11** Authorized to establish the Graduate School of Public Administration
- 1996. 11** Authorized to establish the Graduate School of Industry
- 1998. 03** Opened the School of Medicine (Authorized to establish the Department of Pre-Medicine in 1995)
- 1999. 11** Authorized to establish the Graduate School of Interpretation

2000's

- 2000. 03** Changed the School Motto and legislated the University Charter
- 2001. 11** Opened Cheju National University Hospital
- 2008. 03** Consolidated Cheju National University and Jeju Teachers College
Opened the School of Medicine
Established the College of Veterinary Medicine
- 2009. 01** Changed the University UI
Revised the English name to Jeju National University
- 2009. 03** Opened the Law School
Opened the Graduate School of Social Education
- 2009. 10** Opened the newly-constructed Jeju National University Hospital

2010's

- 2011. 03** Established the School of Nursing
- 2012. 03** Established the School of Arts & Design
- 2012. 05** Marks the 60th Anniversary
- 2012. 09** Opened the Center for Jejuans in Japan
- 2013. 08** Completed the construction of the School of Medicine II
- 2014. 08** Completed the construction of the College of Veterinary Science
- 2014. 10** Completed the construction of the Sustainable Agriculture Research Institute
- 2015. 10** Completed the construction of the new main building of the College of Applied Life Sciences



Campus Map

Ara Campus

- | | | | |
|---|--|---|---|
| 101 Main Gate & Guard Post (Information) | 301 College of Ocean Sciences I | 501 Gymnasium | 701 Veterinary Teaching Hospital |
| 102 Cultural Exchange Center (University Museum) | 302 College of Ocean Sciences II | 502 Student Union Hall | 702 International Center |
| 103 Scientific Technology Center for Citrus & Flowers | 303 College of Applied Life Sciences I | 503 Athletic Field Viewing Platform | 703 Continuing Education Center |
| 104 Agriculture Business Incubator Center | 304 College of Ocean Sciences III | 505 School Personnel Welfare Building A | 704 Faculty Hall |
| 105 Electric Condenser Room | 305 College of Applied Life Sciences II | 506 School Personnel Welfare Building B | 705 Central Library |
| 106 College of Natural Sciences | 306 Liberal Arts Lecture Building | 507 School Personnel Welfare Building C | 706 BT Center for Artificial Heart |
| 107 Subtropical Horticulture Research Institute | 307 College of Engineering IV | 508 School Personnel Welfare Building D | 707 Fine Arts Hall |
| 108 Biotechnology Regional Innovation Center | 308 College of Engineering I | 509 School Personnel Welfare Building E | 708 Golf Driving Range |
| 110 Institute for Nuclear Science & Technology | 309 College of Engineering III | 510 School Personnel Welfare Building F | 709 School of Medicine College of Nursing |
| 111 Sustainable Agriculture Research Institute | 310 Small & Medium Business Support Center | | 710 Jeju Bio-Industry Center |
| 112 Main Building of College of Applied Life Sciences | 311 Machine Shop | | 713 Integrated Liberal Arts Lecture Building |
| | 312 College of Engineering II | | 783 Veterinary Medicine Department Lecture Building |
| | 313 College of Ocean Sciences IV | | 785 Anatomy Laboratory |
| 201 College of Natural Sciences II | 401 Administration | 601 Center for International Language and Culture Education Ara Muse Hall | 801 College of Humanities I |
| 202 Central Laboratory | 402 College of Social Sciences | 602 Foreign Language Institute | 802 College of Humanities II |
| 203 2 nd Library | 403 Outdoor Concert Hall | 603 Law School | 803 Music Practice Room |
| 204 Global House (Restaurant) | 404 College of Education I | 604 College of Economics & Commerce I | 804 Music Hall |
| | 405 College of Education II | 605 College of Economics & Commerce II | 805 Student Dormitory I |
| | 406 Information Telecommunication Center | | 806 Student Dormitory II |
| | | | 807 Student Dormitory III |
| | | | 808 Student Dormitory IV |
| | | | 809 College of Veterinary Medicine |



Sara Campus

- | | | | |
|-----------------------------------|-------------------------|--|--|
| 101 Sara Education Hal | 105 Arts Education Hall | 111 Mirae Changjo Hall | 115 West Building of Elementary School |
| 102 Gymnasium | 106 Student Union Hall | 112 Athletic Field Viewing Platform | 116 Main Gate and Guard Post (Information) |
| 103 Practical Arts Education Hall | 107 Guest House | 113 Sabong Student Dormitory | 118 Teacher Training Center |
| 104 Library | 108 Greenhouse | 114 Main Building of Elementary School | |



102 Jejudaehak-ro, Jeju-si,
Jeju Special Self-Governing Province,
63243, Republic of Korea
Tel (+82 64) 754 2114
Fax (+82 64) 755 6130
www.jeju.ac.kr
