

Far-reaching
Spirit



THE CATHOLIC UNIVERSITY OF KOREA

THE CATHOLIC
UNIVERSITY OF KOREA



가톨릭대학교
THE CATHOLIC UNIVERSITY OF KOREA



www.catholic.ac.kr



가톨릭대학교
THE CATHOLIC UNIVERSITY OF KOREA

The University Finding Myself in Joy and Hope

The Catholic University of Korea
has been practicing the founding philosophy of
valuing humanity for 165 years since 1855.

The Catholic University of Korea
has grown into a global leader,
spearheading education and research with life at their centres,
and spreading the gifts of joy to discover oneself and
to hope for the future.

- 04 INTRO
- 10 President's Message
- 12 Historical & Strategical
Developments

CUK BRAND

- 14 Highlights
- 16 University Innovation
- 18 Liberal Arts Education
- 20 Industry-University
Cooperation
- 22 Career/Job Support
- 24 Global Network

ACADEMICS

- 26 Undergraduate
- 34 Graduate

Affiliated Organization

- 36 Affiliated Institutions

CUK LIFE

- 38 Student Support
- 39 Dormitory
- 40 Student Life at CUK
- 43 Campus Map

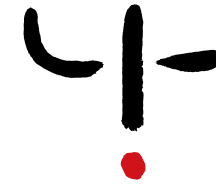
Self directing



Students of CUK
grow and cultivate themselves
by following leadership to build their dreams.



Expanding



Students of CUK
expand their humanity networks on the world stage,
as representatives of CUK.



Growing up



Students of CUK
lift themselves to develop into creative designers
to innovatively build their futures.



“University of finding myself,
University of Joy and Hope,
This is CUK.”



As the first modern, higher-education institution in Korea, the Catholic University of Korea began as “St. Joseph’s Seminary” in Jecheon, Chungcheongbuk-do in 1855 about 165 years ago. Since its foundation, it has been cultivating true human resources for the society and the church, by steadily applying and actualizing the educational philosophy of “Respect for Human Dignity in Education”.

A true talent is a person of culture and good personality, as well as professional knowledge and skills. The most recognized and proud educational asset of our university is its liberal arts education. Through the liberal arts education, our students are growing into individuals with humanistic inclinations, who possess a love of philosophy, art, and literature. Furthermore, they are growing into individuals with upright character, who are considerate, humble, and warm-hearted to help others.

Today, in the era of the 4th Industrial Revolution, the world of universities is being demanded to develop a new education paradigm. As a university leading the new future, our university has been carrying out diverse projects organized by the government, such as the “Leaders in Industry-University Cooperation Plus (LINC+, 2017-),” the “University Contributing to the Normalization of High School Education (2018-),” the “4th Industrial Revolution Leading Innovative University (2019-),” and the “University Innovation Support Project (2019-).” We are becoming a university that is recognized for its quality of education and research as well as an institution that cultivates its students to easily find jobs and launch new businesses through their commendable achievements, even amidst today’s fiercely competitive society.

The true purpose of the university is to help its students find their true ‘selves’ by making their own choices and building their own identities. Our university is committed to helping students challenge themselves, find their aptitudes, and to eventually discover their God-given vocation.

With our motto to be a “The university finding myself in joy and hope” the Catholic University of Korea encourages students to discover their talents and potentials while they are at the university and to fully enjoy the romance of their youth. Also, we will do our best to help and support our students to grow into joyful human capital that not only compete with one another but know how to cooperate and share their knowledge with each other at the same time.

Fr. Luke Jongchul Won, Ed.D.
President of The Catholic University of Korea

Historical & Strategic Developments

1800's

- 1855 Joseph Ambrose Maistre (1808-1857) established the St. Joseph's Seminary in Baeron, Jecheon, Chungcheongbuk-do.
- Mar. 1887 The Seminary was relocated to Wonhyo-ro, Yongsan-gu, Seoul and was renamed to "The Sacred Heart of Jesus Seminary".

1900's

- May. 1936 The St. Mary's Hospital opened in Jung Gu, Seoul.
- Apr. 1947 The Seminary became the Songsin College.
- Apr. 1954 The Faculty of Medicine was expanded.
- Feb. 1959 The Songsin College was renamed to the Catholic College.
- Jun. 1962 The Catholic Medical Center (CMC) was established.
- Jan. 1964 The Songsim Women's University was opened in Chuncheon, Gangwon-do.
- Mar. 1982 The Songsim Women's University in Chuncheon was closed & the campus was transferred to the current Bucheon Campus.
- Sep. 1994 The Catholic Education Foundation was established; Cardinal Kim Su-hwan was inaugurated as the first Chairman.
- Nov. 1994 The Catholic University Korea was established; the integration of the Catholic University Korea and the Songsim Women's University was approved.
- Mar. 1995 A consolidated university was launched, known as the Catholic University of Korea. Bishop Peter Kang U-il was inaugurated as the first President.
- Jun. 1998 Archbishop Nicolas Cheong Jin-suk was inaugurated as the second Chairman of the Foundation.
- Mar. 1999 Fr. Theophilus Choi Seung-ryong was inaugurated as the second President.
- Dec. 1999 The Science Hall (Dasol Hall) was completed.

2000's

- Mar. 2001 Fr. Simon Oh Chang-seon was inaugurated as the third President.
- Dec. 2002 Bishop Joseph Lee was inaugurated as the third Chairman of the Foundation.
- Jul. 2004 Michael Hall was completed.
- Oct. 2004 Archbishop Nicolas Cheong Jin-suk was inaugurated as the fourth Chairman of the Foundation.
- Mar. 2005 Fr. Peter Lim Byeng-hun was inaugurated as the fourth President.
- May. 2005 The 150th anniversary of the establishment of the Catholic University of Korea.
- Jul. 2007 The extension of the Catholic Research Institute of Medical Science at Songeui Campus was completed.
- Feb. 2008 Changed to College of Medicine.
- Mar. 2008 Songeui Building was completed.
- Mar. 2009 Fr. John Park Yeong-sik was inaugurated as the fifth President. The Seoul St. Mary's Hospital of the Catholic University of Korea was opened.
- Aug. 2009 The International Hub Hall (Cardinal Stephen Kim Sou-Hwan International Hub and the Songsim Convention Center) was completed.

2010's

- Oct. 2010 The College of Pharmacy was established.
- Mar. 2012 The Catholic University of Korea's ELP College was established.
- Aug. 2012 Archbishop Andrew Yeom Soo-jeong was inaugurated as fifth Chairman of the Foundation.
- Jan. 2013 The Nicholas Cheong Jin-suk Pharmacy Hall was completed.
- Mar. 2013 Fr. John Park Yeong-sik was reappointed as the sixth President.
- Dec. 2013 University Institution Accreditation
- Jan. 2017 Fr. Luke Won Jong-chul was inaugurated as the seventh President.
- Mar. 2018 Entrepreneurship College was opened.
- Sep. 2018 Selected as Self-Improved University from the University Basic Competence Assessment.

2020's

- 2020. 165th anniversary of the foundation of the university.

Founding Vision

A University with Respect for Human Dignity

Educational Philosophy

Truth, Love, Service based on the Spirit of Catholicism

Concept of Talent

An Ethical leader with humanism and creativity

Educational Purpose

To cultivate competent professionals with concern and respect for humanity

To cultivate balanced individuals who contribute to the advancement of national culture

To cultivate global citizens who contribute to the progress and peace of mankind

Vision

The Catholic University of Korea, Global Leader in Life-oriented Education and Research

Strategies

Innovating Curriculum


Strengthening Specialized Research

Leading Industry-Academic Cooperation

Enhancing Administrative Systems

From the First Education

To the Best University



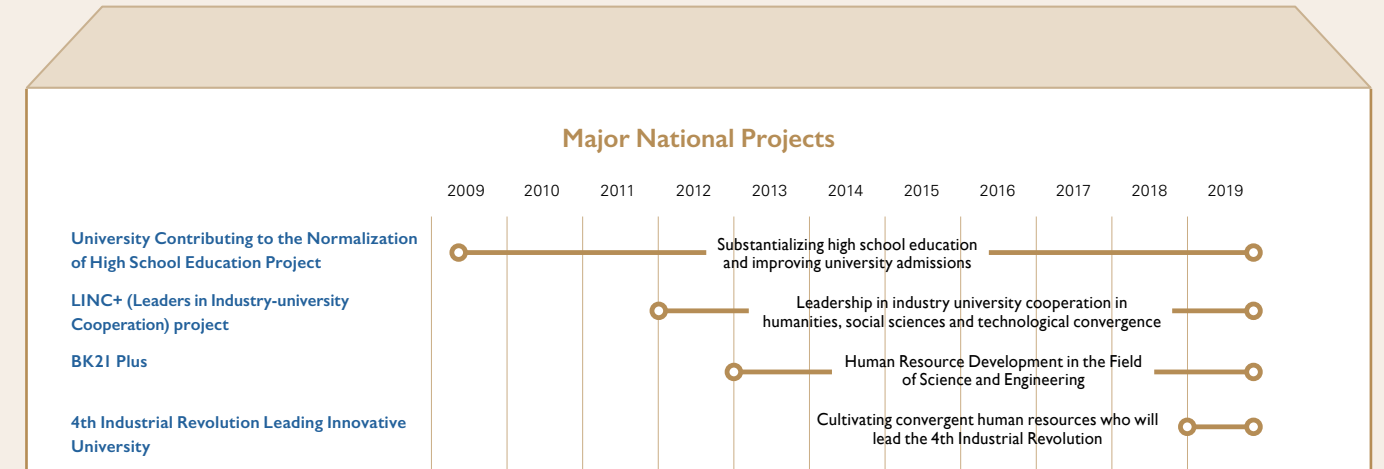
CUK At a Glance

Korea's first Western higher education institution

Established in **1855**

<p>Undergraduate (2019)</p> <p>4 Colleges</p> <p>37 Majors (Departments)</p>	<p>Number of Undergraduate Students (2019)</p> <p>Total of 10,748</p> <p>Songsim Campus 9,644</p> <p>Songeuji Campus 836</p> <p>Songsin Campus 268</p>	<p>Largest Medical Network in Korea (2019)</p> <p>8 Affiliated hospitals all over the country</p> <p>6,200 beds</p>
<p>Scholarships (2018)</p> <p>Total number of scholarship recipients 5,256</p> <p>Amount: 9.9 billion from the university, 12.9 billion from the government, 800 million from outside sources</p> <p>Receipt ratio 69.3%</p>	<p>International Exchange (2019)</p> <p>International partner schools 45 countries, 242 schools</p>	

Major National Projects



<p>University Evaluation Index</p> <p>2019 the Leiden Ranking of the World's Best Universities in social sciences/humanities in Korea 2nd</p> <p>2020 the QS World University Rankings in Korea 15th</p> <p>2020 the URAP University Ranking by Academic Performances in Korea 20th</p>	<p>2019 the Joongang Daily's Korean University Rankings</p> <p>Book purchase cost per student 2nd</p> <p>Education-oriented university evaluation 5th</p> <p>Most frequently quoted in Korean papers in humanities and social science fields 10th</p> <p>Student participation ratio in field practice 11th</p>	<p>Industry-University Cooperation (2018)</p> <p>Students participating in field practice 429</p> <p>Students completing entrepreneurship courses 1,974</p> <p>Students completing Capstone Design 1,083</p> <p>Partner companies 1,098</p> <p>Capstone Design courses in humanities and social science fields 19</p> <p>Industry-university cooperation councils 10</p> <p>Total of 3,743 cumulative student participants</p>
<p>Researches</p> <p>Domestic Patents 176 applications, 139 registrations</p> <p>Overseas Patents 54 applications, 26 registrations</p>	<p>Convergence</p> <p>10 convergence majors, 21 convergence tracks</p>	

Innovation

The Catholic University of Korea transforms from a university that transfers knowledge to students to the one that shapes new values in the future to be flexible to the rapid changes in society.

CUK Vision Innovation Center,

The Control Tower of Education-Research-Industry-University Cooperation

The CUK Vision Innovation Center designs and manages a vision based on the founding and educational philosophy of CUK and serves as a control tower that continuously innovates all aspects of innovation, research, industry-university cooperation, and administration. This institution will be in the highest position within the university as the President's direct organization, which indicates that "innovation" is a very important key word pursued by CUK.

Innovation in Education

Bio Medical Chemical Engineering | Bio Medical Chemical Engineering (BMCE) is a department combining the medical field, which is the strength of CUK, and the pharmaceutical-bio-material field, with the arrival of the era of the 4th Industrial Revolution. This is an industry-university cooperation education model focused on practical practices.

Innovation in an Employment Specialized Convergence Curriculum | The program provides student-specific, job-society-specific curricula by stages including career exploration, career designing, and career development, to ensure the successful entry of our graduates into society, innovatively improving the employment rate of the graduates.

ON-OFF Hybrid Career-Job Curriculum | Operations of online courses related to jobs and operations of online and offline career-job support programs such as "Career-Job Festival", "Semester for Finding Myself Festival", etc.

Support for Self-making Job Portfolio | An integrated support system where students can decide their field for their career-job on their own and select appropriate professors accordingly to receive support for career design and development.

New ON-OFF Hybrid Keystone Design Curriculum | The curriculum operates keystone design curriculum that can satisfy various social needs, by carrying out lectures, discussions and projects at the same time using an ON-OFF method.

Integrated Innovation in Extracurricular Programs | The programs support students' mindset and personality in the career and employment world beyond a knowledge-oriented curriculum. The programs evaluate and manage the achievements of systematic extracurricular programs.

Innovation in research

Reinforcement of 3HC Focusing Research | Focusing on the key research fields of CUK and future growth engines, we focus on investing in 3 research areas to enhance the competitiveness.

Health Care | Bio Medical Chemical Engineering, Medicine, Pharmacy, Life Sciences, Biotechnology, Chemistry, Medical and Pharmaceutical Nanobiotechnology Convergence Studies, etc.

Humanity Contents | Glocal Cultural Story-telling Convergence, Media Technology Contents, Korean Language & Literature, History, Philosophy, Music, Chinese Language & Culture, English Language & Literature, Cultural Arts Management Convergence Studies, etc.

Human Communication | Computer Science, Information, Communications and Electronic Engineering, Mobile Ubiquitous Convergence, Business, Accounting, Psychology, Sociology, Mathematics, Big Data Humanity Management Convergence Studies, etc.

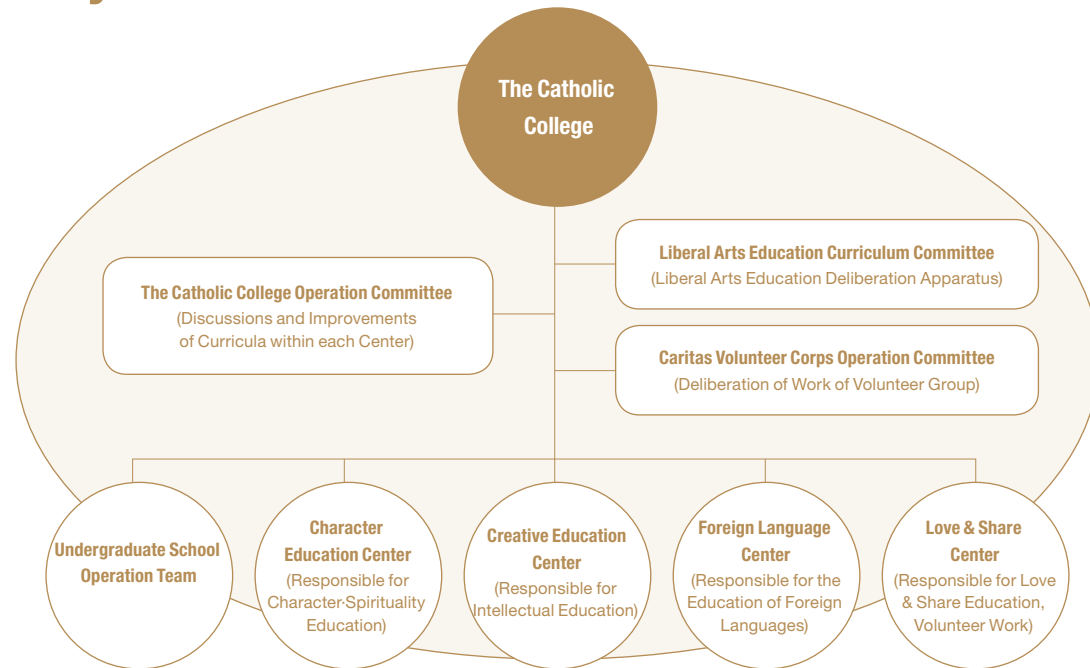
Establishment of International Research Cooperation Center | CUK is responding quickly to international research trends and improving faculty and researchers' capabilities in international joint researches through the International Research Cooperation Center. The International Research Cooperation Center is providing support for the exchange among laboratories, research rooms, departments, and more, at the university level, beyond lecturer and researcher levels.

Innovation in Industry-University Cooperation

LINC+ Project | CUK successfully defined the industry-university cooperation model in humanities/social sciences through the Leaders in Industry-University Cooperation (LINC) project of the Ministry of Education. In 2017, the university was also selected for the Industry-University Cooperation+ (LINC+), a subsequent project following LINC, and has been fostering human resources based on the STEP UP CUK model.

CUK Inspires Respect for Humans and Self-Discovery

The Catholic College at CUK leads education towards cultivating righteous humanity and doing so we provide specific programs for developing ethical leaders based on humanity, intelligence, and spirituality.



Ethical Leaders Rearing Program (ELP) | The ELP is a unique brand of CUK that is distinguished from other universities, by reflecting on whole-person education, humanism education and social service, which are key characteristics of education at CUK. Students who complete the ELP are provided with benefits such as a certificate issued by the President, scholarships, etc.

Humanism Education | To cultivate ethical human resources with character, the university offers a variety of liberal arts courses including anthropology and experience-based extracurricular programs.

Spiritual Education | On/off-campus volunteering works and leadership activities are provided to increase students' spiritual capabilities.

Intelligence Education | Whole-rounded education is provided to develop creativity, professionalism and international competence.

Caritas Volunteer Corps & CUK International Volunteer Organization | Caritas Volunteers is operated by voluntary participation of the university members and practices the spirit of sharing with and serving those who need help, such as the underprivileged, migrants, the seniors living alone, and people with disabilities. Since its establishment in 1997, the CUK International Volunteer Organization has been carrying out overseas volunteer activities with groups consisting of professors, staffs, and students, during summer breaks.



Industry-University Cooperation to Advance Specialized Research and Foster Future Talents

The Catholic University of Korea is becoming a university leading the 4th Industrial Revolution through the industry-university cooperation model.

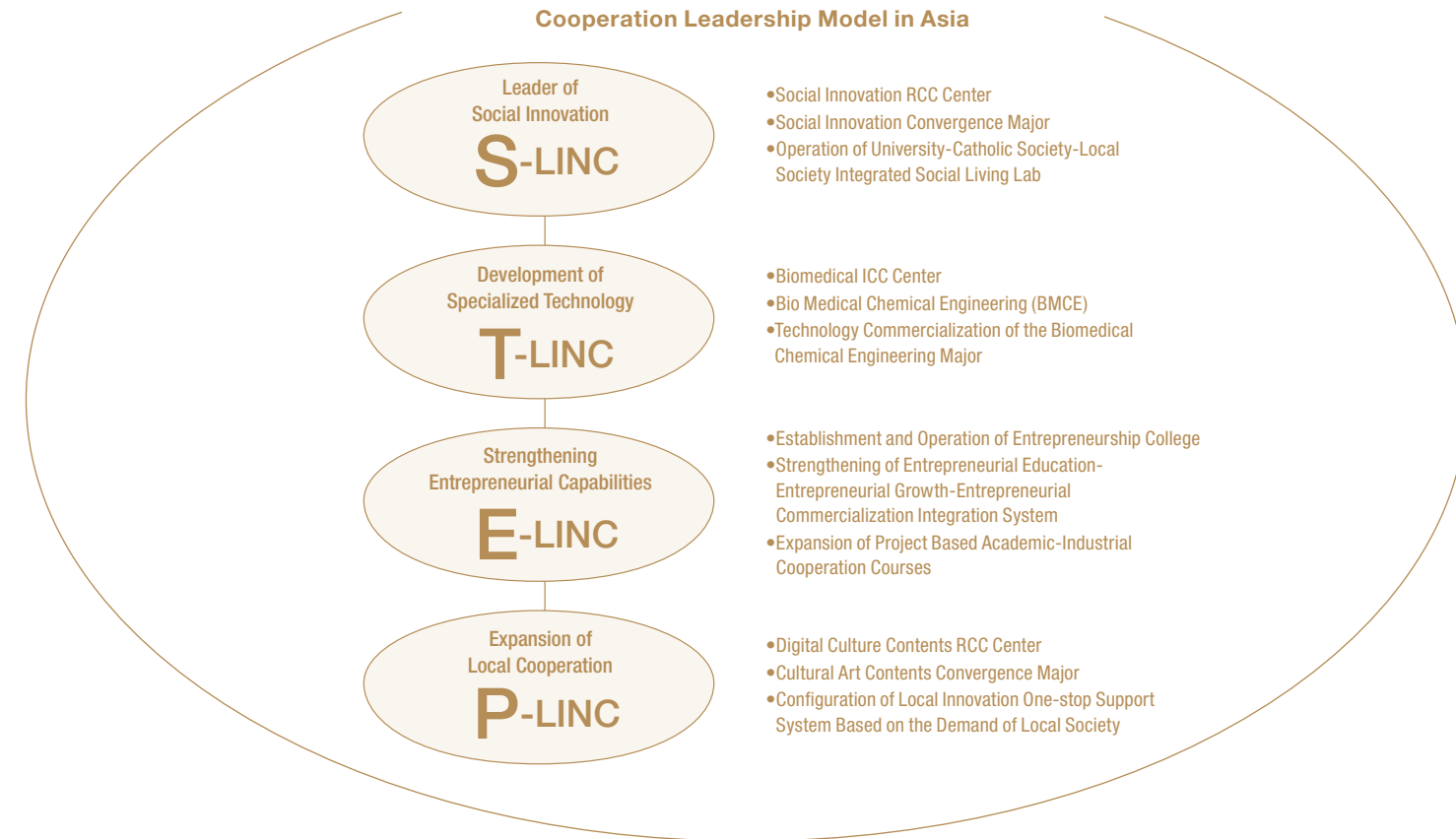


LINC+ Project

The Catholic University of Korea is expanding the advanced industry-university cooperation model that reflects the unique characteristics of the university through the development project for Leaders in Industry-University Cooperation+ (LINC+).

STEP UP CUK

Highest Level of Catholic University Academic-Industrial Cooperation Leadership Model in Asia



Entrepreneurship College

The College strengthens students' entrepreneurship through the development and operation of the industry-university cooperation curriculum.

Business Incubation Center | The Center operates programs to discover and nurture a variety of excellent start-up ideas by utilizing start-up support facilities including Startup LAB and CUK MAKER SPACE.

Field Training Support Center | The Center strengthens students' employment capabilities and supports career design by operating field training, capstone design courses, and adventure design courses.

Social Innovation Center | The Centre creates a social enterprise ecosystem by fostering social innovators and social venture human resources with social entrepreneurship within the university.

Entrepreneurship Research Institute | The Institute leads research in the field of start-up and social innovation based on entrepreneurship and leads academic discourses on Korea and abroad by developing and distributing related policy alternatives, management techniques, and cases.



Career·Job Support for Cultivating Leaders in Society

The Catholic University of Korea provides a variety of careers, jobs, and entrepreneurship support programs for all students from lower-grade students to higher-grade students, so that they can grow into human resources contributing to our society.

Employment Support Programs

Employment-UP Academy | This program is a short-term intensive learning program that develops students' jobs competencies.

Mentor Day | Working seniors are invited as mentors to share real-life advice and their know-hows.

Employment Club | This is a small group activity for career development and employment preparation with a professional mentor.

Employment Mentoring | This is a professional mentoring program with professors specialized in industry-university cooperation.

Career Counseling Programs

JOB CAFE Open Counseling | JOB CAFE provides counseling individuals or groups on career and employment.

Career and Employment Counseling for senior Students by Majors | Professors consult 4th grade students regarding their careers and employments.

Career Support DREAM | This program is based on the research of job psychological tests (MBTI, STRONG). It provides result interpretation and an opportunity to write self-descriptive documents.

Employment Support DREAM | This program is an intensive teaching program in preparation for the open recruitment in the first/second half of the year, in employment study format (document class, interview class).

Employment and Career Counselor's Visiting Service | This program is a group counseling program which employment and career counselors visit and assist applicants.

Visiting Employment Special Lectures | A career counselor engages with students to provide guidance on these with special lectures and employment strategies.

Entrepreneurship Support Programs

Startup Convergence Major | This is a start-up-specialized major that teaches general theories and strategies on new business planning and start-ups.

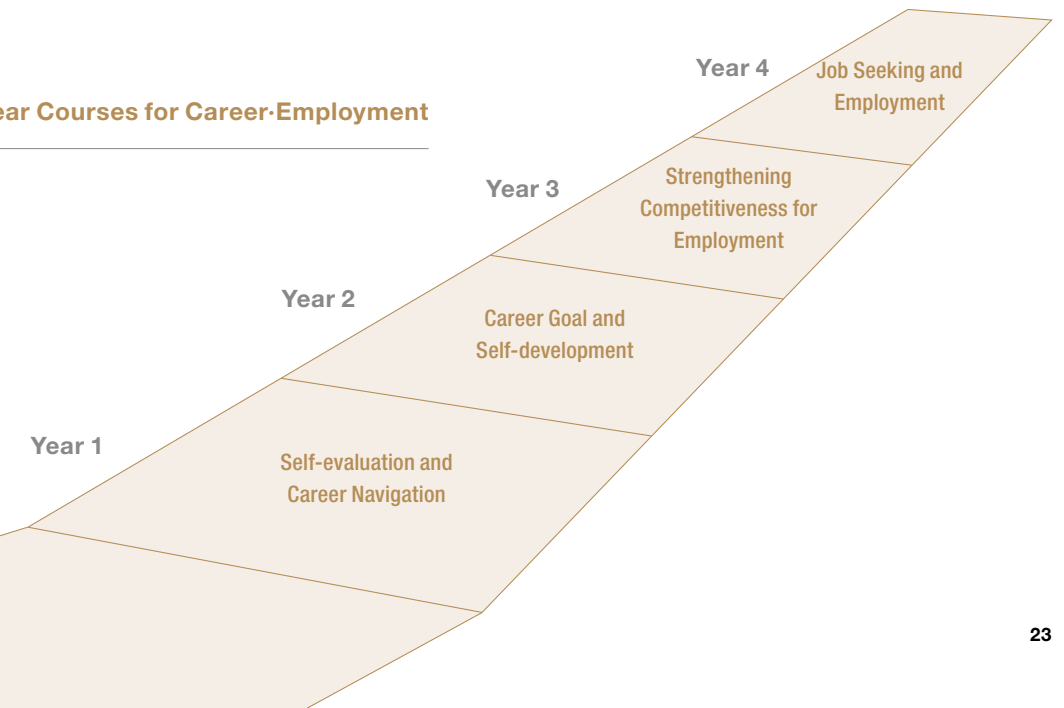
Entrepreneurship Course | This course is tailored to each process such as start-up preparation, execution, promotion, and post-management. It is organized lectures with experts participation, including management and technology consultants, investment experts, and corporate CEOs.

Startup Club | The highly selected startup teams are provided with a start-up space and funds for their activities.

Startup Contest/Startup Idea Contest | Regular competitions are held to help students discover creative start-up items and excellent new technologies and lead them to the foundation of real start-ups.

Start-up Festival | The start-up festival is composed of variety of events such as special lectures, an idea market, and road shows.

4 Year Courses for Career·Employment



Global CUK Meets the World at the University

International Student Exchange Programs

Exchange Student | This program sends students to overseas partner universities that sign an agreement to exchange students for one year or one semester, allowing participants to study with students from all over the world. Students can study abroad at a relatively low cost by paying tuition fee only to CUK, being exempted from the tuition fee to the overseas university. Courses completed at the partner university can be accredited with credits at our university.

Visiting Students | Students can study at a partner university or a university belonging to a partner organization, for 1 year or 6 months at their own expense. Students should pay the tuition fee both to CUK and the partner university.

SAF (The Study Abroad Foundation) | SAF is one of the representative visiting student programs, which allows students to study at universities abroad which do not have direct mutual student exchange agreements with CUK, using SAF's overseas networks.

International Internship

Internship in the U.S.A. | This is an internship program at Warner Pacific University in Portland, Oregon, U.S. It includes 10 weeks of English learning courses and 6 weeks of internship, which allows students to improve their English skills and gain experience in international businesses.

Internship in Australia | This is a 15-week internship program at the Australian Catholic University (Brisbane Campus) located in Brisbane, Australia. English lessons are held for 3 days a week and the internship is carried out for 2 days a week. Depending on the major, students can choose internship areas such as marketing, media, advertising, IT, accounting, and law.

Short-term Exchange Programs

CUK Global Summer School, CGSS | CUK holds a Global Summer School by inviting students from overseas partner universities. Participants experience Korean culture through 32 hours of Korean language classes and 40 hours of Korean study classes. Enrolled students at CUK can participate in the program as helpers, to live with international students and develop a global sense.

EASCOM (East Asia Student Communication) | Hokusei Gakuen University in Japan holds an annual East Asian Student Exchange Program called EASCOM. Students at CUK and students from China, Taiwan, and Japan participate in the program, interacting with each other.

ASEACCU General Assembly | ASEACCU (Association of Southeast and East Asian Catholic Colleges and Universities), an international council of 70 Catholic universities in 8 Asian countries, holds a general assembly every summer to raise member universities' academic levels, to realize Catholic education, and to revitalize cooperative programs. CUK selects and dispatches the participants of the assembly consisting of faculty and students every year.

English Education Programs

Global Lounge | Located on the 1st floor of K hall, this lounge is an English-only area where all students should speak English. English newspapers, English magazines, English books, English board games and DVDs are available in the lounge.

G-ACE Program | The Global Advanced College English (G-ACE) program operated by the Foreign Language Education Center helps students improve their English skills by advice related to learning English by native professors and workshops on a variety of topics.





Study of Finding Oneself in Humans

By studying knowledge of humanities and cultures, students will find themselves and grow into the talented with a critical mind.



- Department of Korean Language & Literature
- Department of Philosophy
- Department of Korean History

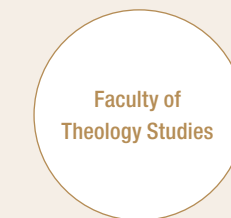


- School of English Language & Literature
- Department of Chinese Language & Culture
- Department of Japanese Language & Culture
- Department of French Language and Culture



Hall of Theology Shining with Long Tradition

We educate laities, priests, and nuns through intellectual, human, pastoral, and spiritual formation in the spirit of the Catholic Church in order to produce the future leaders of the church.



- Department of Theology





Through diagnosis of the contemporary society for the future

Students develop the ability to solve various problems occurring in society and to deal with diverse social fields ranging from economic, political, and phenomena to psychological aspects of individuals.



Faculty of Social
Science

- Department of Social Welfare
- Department of Psychology
- Department of Sociology
- Department of Special Education



Faculty of
Business

- Department of Business Administration
- Department of Accounting



Faculty
of International
Studies-Faculty of
Law & Economics

- School of International Studies
- Department of Law
- Department of Economics
- Department of Public Administration



A Prestigious Medical Education with a Deep-Rooted History

Based on the Catholic spirit and humanism, the university cultivates human resources with a sense of duty and ability to contribute to the human society.

College of
Pharmacy · College of
Medicine · College of
Nursing

- Department of Pharmacy
- Department of Premedical Science · Department of Medicine
- Department of Nursing





Navigating and Leading the Way in the Era of the 4th Industrial Revolution:

We provide students with engineering knowledge, skills, and its application.

Faculty of ICT Engineering

- School of Computer Science and Information Engineering
- Department of Media Technology & Media Contents
- School of Information, Communications and Electronic Engineering

Faculty of Bio Convergence Engineering

- Department of Life Sciences
- Department of Biotechnology
- Department of Environmental Engineering
- Department of Bio Medical Chemical Engineering

Warm Heart and Cold Mind

We cover traditional natural sciences and life sciences for
better understanding of natural phenomena and modern societies.

Faculty of Natural Sciences

- Department of Chemistry
- Department of Mathematics
- Department of Physics

Faculty of Life Sciences

- Department of Consumer & Housing
- Department of Clothing & Textiles
- Department of Child & Family Studies
- Department of Food Science and Nutrition



To be researchers who bring joy and hope to people

**We grow ethical researchers
who respond to social needs based on respect for human dignity
to deliver joy and hope to the world.**



General Graduate Schools

Curriculum for Master's Degree | Theology, Korean Language & Literature, French Language & Literature, English Language & Literature, Chinese Language & Literature, Japanese Language & Culture, Korean History, Religious Studies, Philosophy, Social Welfare, Psychology, Sociology, Business Administration, International Affairs, Law, Public Administration, Korean Language Education, Chemistry, Life Sciences, Mathematics, Physics, Food Science and Nutrition, Consumer & Housing, Clothing & Textiles, Computer Science and Information Engineering, Biotechnology, Information, Communications and Electronic Engineering, Digital Media, Music, Child & Family Studies, Pharmacy, Education (Cooperative Course), Global Korean Culture Convergence (Cooperative Course), Gerontology (Cooperative Course), Toxicology (Cooperative Course), Digital Social Policy and Service (Cooperative Course), Cognition Technology Convergence (Cooperative Course), Medical Artificial Intelligence (Cooperative Course), Medical Education, Nursing, Medicine, Biomedicine & Health Science

Curriculum for Doctorate Degree | Theology, Korean Language & Literature, Korean History, Religious Studies, Philosophy, Psychology, Food Science and Nutrition, Life & Culture, Korean Language Education, Nursing, Public Health, Interdisciplinary Health Science, Bioethics, Education (Cooperative Course)

Integrated Curriculum for master's and Doctorate Degree | English Language & Literature, Social Welfare, Business Administration, Public Administration, Chemistry, Life Sciences, Physics, Computer Science and Information Engineering, Biotechnology, Information, Communications and Electronic Engineering, Digital Media, Pharmacy, Global Korean Culture Convergence, Gerontology, Toxicology, Digital Social Policy and Service, Cognition Technology Convergence, Medical Artificial Intelligence, Medicine, Biomedicine & Health Science

Special Graduate Schools

Graduate School of Public Health | Occupational and Environmental Health, Occupational Ergonomics and Rehabilitation Health, Occupational and Community Health Nursing, Health Promotion, Department of Public Health Informatics, Epidemiology and Clinical Trial, Health Policy and Administration, Global Health

Graduate School of Social Welfare | Social Welfare, Medical Social Welfare, Elderly Welfare, Mental Health Welfare

Graduate School of Counseling | Counseling, Spirituality Counseling, Child & Adolescent Counseling, Organization Counseling

Graduate School of Healthcare Management | Medical Management

Graduate School of Education | Special Education, Child & Adolescent Education, Reading Education, Counseling Education, Vocational Special Education, Korean Language Education for Foreign Students, Lifelong Education, Career Counseling

Graduate School of Clinical Dental Science | Conservative dentistry & Prosthodontics, Dental Implantology, Orthodontics, Oral Maxillofacial Surgery

Graduate School of Clinical Nursing Science | Home Nursing, Nursing for the Elderly, Emergency Nursing, Mental Nursing, Tumor Nursing, Infection Control Nursing, Hospice Nursing

Graduate School of Culture & Spirituality | Culture & Spirituality

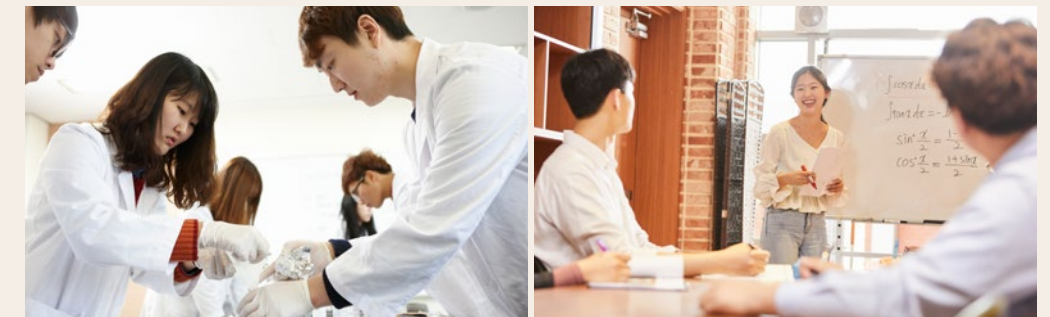
Graduate School of Church Music | Department of Church Music (Organ Performance, Composition, Choral Conducting)

Graduate School of Life | Bioethics, Culture of Life, Clinical Research Ethics

Graduate School of Business Administration | Business Administration

Graduate School of Public Administration | Department of Public Administration (General Administration and Local Government, Medical and Public Health Administration, Private Investigation)

Graduate School of Canon Law | Canon Law



State-of-the-Art Libraries With outstanding collections

Theological Library

The Theological Library researches and develops the knowledge of theology by collecting and preserving materials necessary for various studies and strives to provide high-quality collections for priesthood training and gospel dissemination. More than 65% of the collections consist of religious and adjoining-study related books. Especially, the library has many Catholic books, such as those in the field of patrology, and a large number of academic DBs related to theology. In addition, through the network with the theological libraries all over the country through the Korean Theological Library Association, the library helps theologians' studies through their data-sharing and cooperation system. Furthermore, by forming the Korean Catholic University Library Association, the library is providing publications published by 7 Catholic universities around the country, major Catholic publications, searching service for old church texts and Full-Text service.



Theological Library

Central Library

With the motto of "Cradle of Research and Academics, User-Centered Library", the Central Library has approximately 620,000 collections, 1,200 types of printed journals, and 29,000 non-book materials to support the research and learning activities of the university members. The Library is also providing about 13,000 types of e-journals through the specialized academic databases in various fields. The Library systematically collects domestic and international academic materials and information resources to establish an information system with an improved function where the members of university can easily access to the materials and to provide diverse services to support academic research and educational activities. The Library is also making efforts to reinforce the university's research competitiveness by providing academic support services such as research support services and text copying/mutual loan service.



Central Library

Medical Library

Recognized as the medical library of the largest size and the best facilities among the medical libraries in Korea, the Medical Library holds approximately 180,000 books, 800 types of domestic and international academic journals, numerous online databases and multimedia materials. In particular, more than 15,000 types of e-journals are provided online. The Library is actively supporting research and learning activities through research support services, PubMed search, and EndNote application education. In addition, the Library is doing its best to secure various in-depth information materials through exchanges with leading medical libraries in Korea and foreign countries.



Medical Library

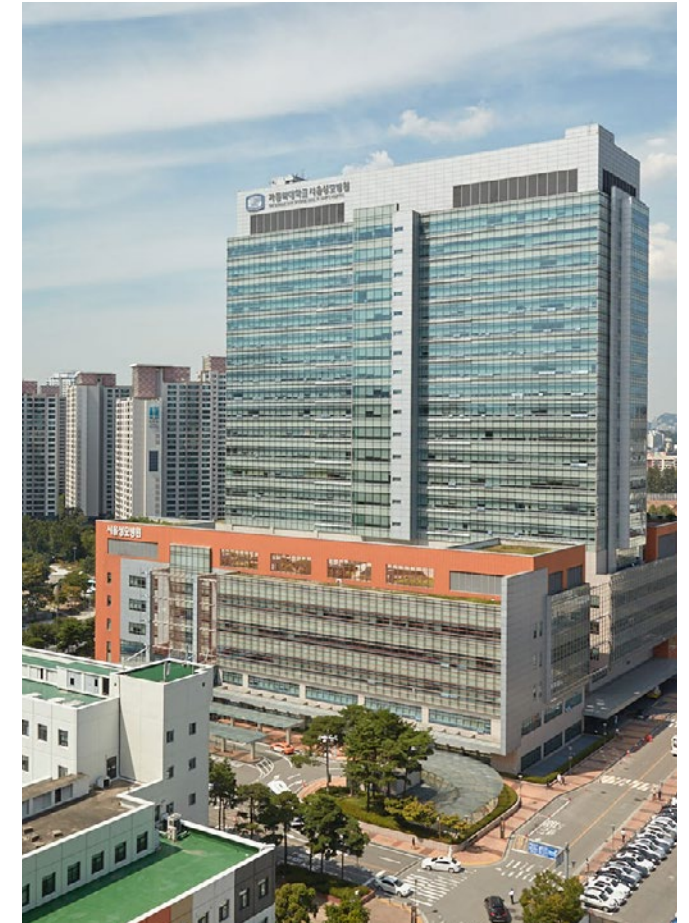
Affiliated Organizations Raising the Capability of the University

Affiliated Organizations

Songsin Campus | The Theological Library, The Museum of the Liturgy, The institute for Pastrol Research, The Computer Office

Songsim Campus | The Central Library, Information & Communications Center, THE FORUM (English Newspaper), Broadcasting Station, Student Guidance and Counseling Center, Research Institute for Convergence Science and Technology, The Retreat & Training Center, Research Institute for Humanities and Social Sciences, Research Institute of Human Ecology, Research Institute of Anthropology, Institute of Government Innovation and Productivity, Sexual Violence Counseling Center, Research Institute for Cultural Business, ROTC, Education Training Institute, The STEPHEN CARDINAL KIM Institute, Research Institute for Canon Law, Choonie Social Welfare Center, Gogang Social Welfare Center, Bucheon Wonmi Jaehwal Center, School Newspaper, Research Institute for Glocal Cultural Storytelling, Research Institute for Global humanities Management

Songeu Campus | | The Medical Library, The MASTER Center for Medical Education Support, the START Center for Medical Simulation, Catholic Leukemia Institute, The Institute for Aging and Metabolic Disease, Research Institute for Hospice, Catholic Institute for Applied Anatomy, Catholic Institute of Bioethics, Research Center for Apoptosis Diseases, Research Institute for Functional Transcriptome, Institute of Hansen's Disease, Catholic Stem Cell Bank, Catholic Rheumatism Research Center, Postech-Catholic Biomedical Engineering Institute, Cancer Research Institute, Research Institute of Biomedical Engineering, Institute of Cell & Tissue Engineering, Department of Laboratory Animal, Catholic Institute for Polymorphism of Human Genomes, Transplant Research Center, Research Institute for Human and Social Medicine, Research Institute for Ophthalmology, Research Institute for Vaccine and Biology, Convergence Research Institute for Immune Disorders, Catholic Institute for Liver, Research Center for Cancer Evolution, Catholic Institute for Health Care Management, Catholic Institute for Cerebral Nerve Sciences, Research Institute for Latest Convergence Radiological Medical Technology, Catholic International Public Health Research Institute, Research Institute for Convergence and Mediation Medicine of Imaging of Molecules, Catholic Institute for Convergence of Western and Oriental Medicine, Research Institute for Pharmacometrics, Catholic Institute for Prostate Gland, Research Center for Agricultural Medicine



Affiliated Hospitals

Seoul St. Mary's Hospital	222, Banpo-daero, Seocho-gu, Seoul www.cmcseoul.or.kr
Yeouido St. Mary's Hospital	10, 63-ro, Yeongdeungpo-gu, Seoul www.cmcungmo.or.kr
Uijeongbu St. Mary's Hospital	271, Cheonbo-ro, Uijeongbu-si, Gyeonggi-do www.cmcujb.or.kr
Bucheon St. Mary's Hospital	327, Sosa-ro, Bucheon-si, Gyeonggi-do www.cmcbucheon.or.kr
Eunpyeong St. Mary's Hospital	Jingwan-dong, Eunpyeong-gu, Seoul www.cmcep.or.kr
Incheon St. Mary's Hospital	56, Dongsu-ro, Bupyeong-gu, Incheon www.cmcism.or.kr
St. Vincent's Hospital	93, Jungbu-daero, Paldal-gu, Suwon-si, Gyeonggi-do www.cmcvincent.or.kr
Daejeon St. Mary's Hospital	64, Daeheung-ro, Jung-gu, Daejeon www.cmc dj.or.kr

Education Services for Students Enhancing the Quality of University Life



University Scholarship

Students at CUK are highly satisfied with the tuition fee and scholarship. We are especially operating a robust scholarship system to provide learning opportunities to hard-working students.

Truth Scholarship	Requirements: Completion of at least 17 credits in the previous semester Targets: Student with top grades by years (all tuition fee), students with excellent grades (35% of tuition fee), students who improved the grades by over 1.5 (KRW 600,000)
Love Scholarship	Requirements: Completion of at least 15 credits and obtaining grades of at least 2.5 in the previous semester Targets: Hope, the dream (Part of tuition fee), Internship · Work Scholarship (students who worked at institutions at the university)
Service Scholarship	Requirements: Completion of at least 15 credits and obtaining grades of at least 2.5 in the previous semester Targets: Heads of groups (Student Council, Representatives of majors, broadcasting station, university newspaper, etc.), helpers (CUK Ambassador Cahong, OBF, Webzine, CUK Friends, etc.), voluntary works (social voluntary works, Caritas activities), mentoring (helpers for lectures)
Special Scholarship	Targets: Students entering the university with special admissions for North Korean refugees, persons eligible for veteran's compensation, students with disabilities, ROTC, other recommended students, students suffering from natural disasters, etc

Medical Expenses Reduction for Affiliated Hospitals

Targets	Reduction rate
Enrolled students / General graduate school students	100% of First medical examination and second medical examination expenses
Special graduate school students / Foreign exchange students	30% of the medical service fee is paid by the patient.

The Student Counseling Center

The Student Counseling Center provides a variety of counseling activities to help students adjust to university life and to stay mentally healthy. All enrolled students can get various psychological tests and 1:1 individual interpretation. They can also participate in personal and group counseling for psychological development. Counseling details and psychological test results are confidential, and all costs are free.

Welfare Facilities

We are operating a variety of welfare facilities to help students live more convenient and high-quality lives.

Kim Sou Hwan Hall	Coffee shop, bank, convenience store, fitness center, dormitory cafeteria, global lounge, Mom's Touch, Sky Lounge Restaurant and Book Cafe
Nicholls Hall	Job Cafe, coffee shop, Student Counseling Center
Student Union Building (Sophie Barat Hall)	Faculty cafeteria, student cafeteria, convenient store, bookstore
Central Library	Book Cafe

The Office of Campus Ministry

The Office of Campus Ministry provides students with a place where they can find their true 'selves' while discovering life's ultimate goals and truths based on Christian values and faith. At the Office of Campus Ministry, diverse Catholic liturgies including Mass are held, and it offers opportunities for pilgrimages, religious retreats, prayer meetings and volunteer works.

Autonomous Group Life To Grow as a Citizen of the World



Dormitory Stephen

Dormitory Stephen

The Dormitory Stephen aims to provide amenities for enrolled students from distant regions and foreign students and to allow them to learn mutual respect and autonomy through group life. Established in 2009, the Dormitory Stephen is located on the 4th through the 15th floors, and can accommodate around 1,200 persons.

9th-15th floors	Rooms for female students
5th-8th Floors	Rooms for male students
4th Floor	Rooms for the disabled, rest area, mailbox, reading room, information desk, International Hall Operation Team

The Second International Hall (Tentative Name)

The Second International Hall, will be built with two basement floors and 10 floors above ground. The first basement floor includes lecture rooms and the building complex combines dormitories, lecture halls, convenience facilities and commercial facilities.

The Second International Hall (Tentative Name)



The university finding
myself in joy and hope





Directions

Cultivating Ethical Talents Leading the Development of Human Society
Humanities-Arts, Social Science, International, Natural Sciences, Life Sciences, Engineering and Pharmacy
 (14662) 43 Jibong-ro, Bucheon-si, Gyeonggi-do, Republic of Korea
 Tel. +82-2-2164-4114



Global College of Theology Leading the Asian Catholic Churches
Theology
 (03083) 296-12, Changgyeonggung-ro, Jongno-gu, Seoul, Republic of Korea
 Tel. +82-2-740-9714



Cultivating Medical Personnel Practicing Truth, Love, and Service
Medicine and Nursing
 (06591) 222 Banpo-daero, Seocho-gu, Seoul, Republic of Korea
 Tel. +82-2-2258-7114

