



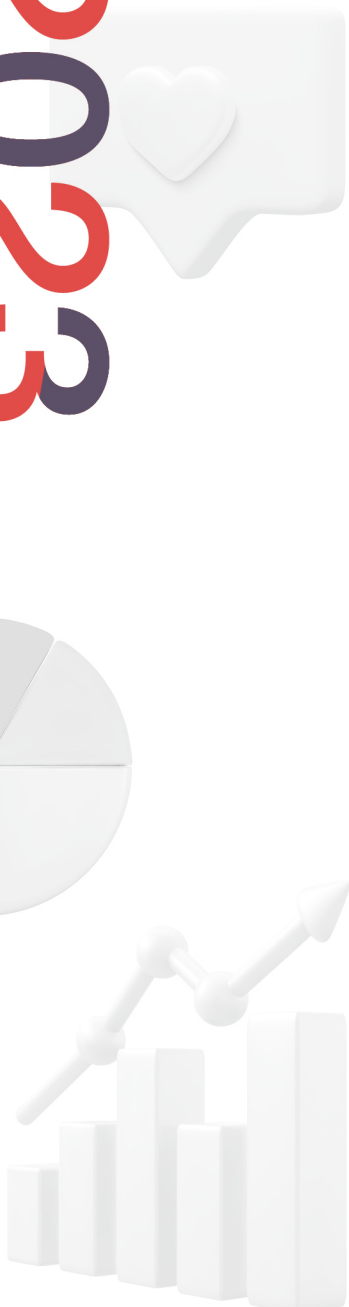
Visit the Kyungpook
National University
website via the QR code.



Experience Kyungpook
National University
cyber tour



2023 KYUNGPOOK NATIONAL UNIVERSITY INFOGRAPHICS



경북대학교
KYUNGPOOK NATIONAL UNIVERSITY

A recognized university



No. 1 National University



- 2022 Times Higher Education (THE) University Impact Rankings (ranked **No. 13** in the world, **No. 1** in Korea)
- 2022 National Customer Satisfaction Index (NCSI)
- 2022 QS World University Rankings
- 2022 THE World University Rankings
- 2022 QS Asian University Rankings
- 2022 Best Global Universities Rankings by U.S. News and World Report
- 2022 Academic Ranking of World Universities by Shanghai Ranking Consultancy
- 2022 Center for World University Rankings (CWUR)

Attracting Major Central/Local Government-Funded Projects



- Regional Innovation Strategy (RIS): KRW **331.6** billion
- Leaders in Industry–University Cooperation (LINC 3.0): KRW **33** billion
- Phase 4 BK21 Graduate School Innovation Project: KRW **28.6** billion
- Regional Leading University Development Project: KRW **10.6** billion
- National University Development Project: KRW **51.3** billion
- University Innovation Support Project: KRW **32.9** billion
- Leading Research Center Project: KRW **23** billion

Ranked in the Top 10 for Corporate Preference and University Attended by CEOs



- University Brand Reputation (2022): **8**th
- Attended by CEOs of Top 100 Companies (2020): **7**th
- JoongAng Ilbo University Ranking
— preferred by corporate HR managers (2020): **12**th

A university that nurtures creative convergence talents

Intensive Fostering of Convergence Research and Education

Research

AI, Biomedical Convergence, Robot and Smart Systems, Hydrogen & Renewable Energy, Data Convergence Computing, Agro-Bio Convergence, Humanities Counseling, East Sea Rim Convergence, Small-Scale Convergence Research Center

Education

North Korean Agricultural Development, Northern Asian Culture & Trade, Business Administration, Psychology, Food Science and Nutrition, Computer Science

Government-funded

KRW **860** million

Building a Platform for Universities to Share Technological Innovation

- Building a technological innovation network for metropolitan universities and a platform for mutual cooperation
- Participated by 4 universities — Kyungpook National University, Pusan National University, Chonnam National University, and Hanyang University
- Sharing university-centered technology infrastructure and promoting joint ventures

Operating the Department of Convergence in the ITA Field

- Bachelor's/Master's combined course (5 years)
- Biomedical Convergence Engineering, Robot and Smart System Engineering, Hydrogen & Renewable Energy
- Eligible for students who are in their second year or higher

Operating Data Science Graduate School

- Linking various domains of disciplines with AI and big data
- Fostering expertise in data analysis and utilization through convergence education
- Operating LG Innotek Data Science Industry-University Cooperation Research Center

Student Comprehensive Support Center

- Academic consulting for freshman
- Programs for preventing student dropout
- Visiting academic counseling and presentation
- Academic adaptation programs for international students
- Adaptation programs for transfer students
- On-campus student support programs

5-Stage Action Plan for Improving Employment Rate



• Employment consulting P/R

Career coaching, counseling, resume clinic, mock job interview, special lectures on employment

Systematization of Psychological and Career Counseling

Freshman

Systematic examination and counseling for freshman

- Job aptitude test
- Personality test and psychological support group selected and supported

Undergraduates

SMART system of advisor counseling

- Career and Employment Division of the Office of Student Affairs
- Survey of employment awareness
- Career counseling by majors
- Promotion committee for employment and entrepreneurship
- Departments and Project Groups
- Student Counseling Center
- Personal psychological counseling
- Group counseling
- Psychological counseling in connection with local institutions

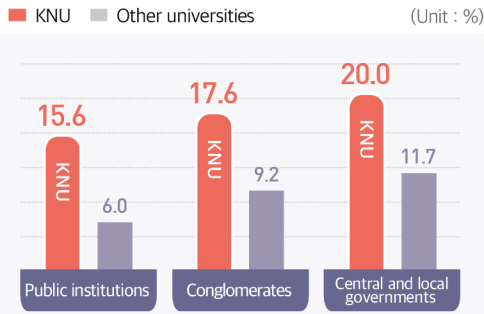
Graduates

- Promoting smooth advance into society
- Promoting human maturity

※ 10 professional counselors in place

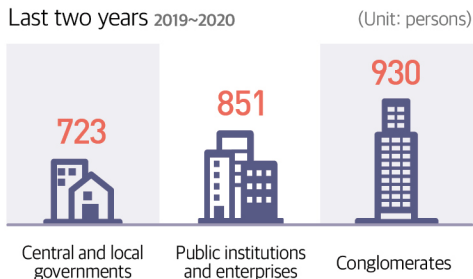
A university that fulfills your dream for a quality job or starting a company

Employment Fields of 2020 Graduates



(Source: Korean Educational Development Institute, 2021)

Employment in Public Institutions and Conglomerates



Passing National Exams

- 2022 national nursing exam passage rate: **100%** (4 consecutive years)
- 2022 national veterinary exam passage rate: **98.5%**
- No. of alumni who passed the civil service exams for grade 5 public officials for the last 10 years: **38** (2013-2022)
- A top-ranker in the 2019 Civil Service Examination the Higher Civil Service Examination
- 2019 & 2022 national dental exam passage rate: **100%**
- **3** prosecutors, **12** judicial researchers, **4** career judges, **1** career judicial researcher (2022)



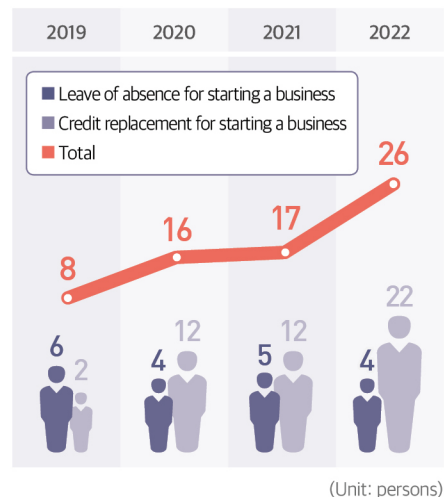
Expansion of Local Talent Recruitment

- Employed by public institutions in Daegu and the ones relocated to innovation cities in Gyeongsangbuk-do Province
74 in 2018 ▶ 77 in 2019 ▶ 57 in 2020
- Expansion of employment for public institutions and as civil servants
 - ▶ Ratio of compulsory recruitment of public institutions that have relocated risen to **30%**
 - ▶ Public institutions' preferential system to hire talents from the non-metropolitan areas
 - ▶ A target system of local talent recruitment for civil servants

Business Incubators

- Support for start-up planning, marketing, and mentoring
- Start Hub Center (1F, Global Plaza)
- Start Square (1F, Global Plaza)
- Start Village (Residence Hall D)

Bachelor System for Entrepreneurship Education



A university performing world-class research

World-Class Research Capabilities of Professors



One of the world's most influential top 1% researchers

Professor **Sung Hwa Jhung**

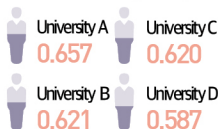
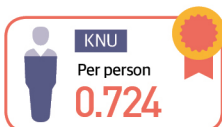
Selected as the HCR* in 2022

5 consecutive years

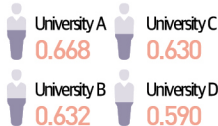
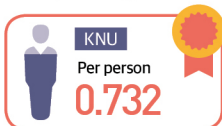
*HCR: Highly Cited Researchers, which are selected by Clarivate Analytics, an academic information service company

Published Paper Performance per

- Highest number of SCI-level papers per full-time faculty among Korea's national universities (2022)



- Highest number of international papers per full-time faculty among Korea's national universities (2022)



* Based on 2022 information disclosure

Increase in Transfer of Professors' Patent/Technology



Technology transfer

1.4 ▶ KRW **3.2** billion
(2018) (2022)

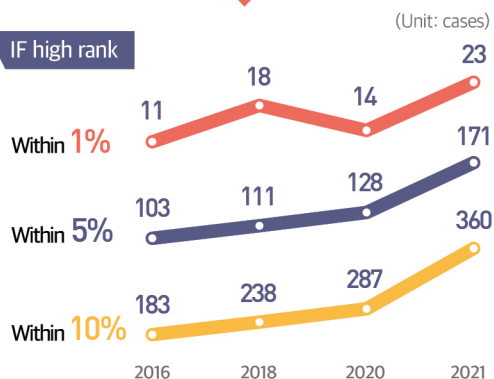


Patent application/
registration

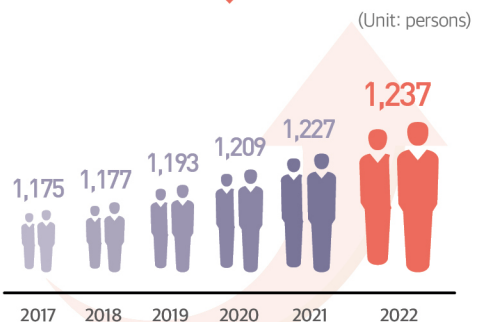
775 ▶ **901** cases
(2018) (2022)

Excellence in Academic Research by Professors

IF high rank



Securing the Fixed Number of Full-Time Faculty



A government-funded university



Campus Innovation Park Project of KNU Approved by the Government

(Notice of the Ministry of Land, Infrastructure and Transport)

- Project period: from 2022 to when the project is completed
- Total project expense: KRW **50.4** billion
- Complexation of corporate occupancy, start-up support, and residential and cultural facilities

Secured KRW 73.3 billion from the Government for New Facility Projects

- College of Pharmacy New Drug Development Center: KRW **31** billion
- Renovation of the Future Convergence Talent Training Center: KRW **423** billion

BrainKorea21 Four (BK21) 2020.9. ~2027.8.

- Human resource development projects (KRW **147.8** billion): 21 educational research centers (teams) for fostering future talents and 7 research centers for fostering innovative talents
- Supporting research scholarships to participating graduate students (approx. 870 students per semester; around KRW **5.2** billion)
- Participants: 450 professors / 60 new researchers / 1,300 graduate students
- Selected as an excellent university for 2 consecutive years in graduate school innovation (KRW **28.6** billion); increased in project expenses (the 3rd year of the project expense increase + KRW **200** million)

Projects Funded by National Support With Highest Level Among the National Universities

University for Creative Korea (CK) 2014~2018	3
Initiative for College of Humanities' Research and Education (CORE) 2016~2018	86
Program for Industrial Needs — Matched Education (PRIME) 2016~2018	124
Software-Centered University Support Project 2015~2026	216
Regional Leading University Development Project 2014~2023	107
National University Development Project 2018~2022	514
University Innovation Support Project 2019~2022	329
BrainKorea21 Four (BK21) 2020~2027	1,764

Total project expense **KRW 314.3 billion**

(Unit: KRW 100 million)

Receiving Orders of Large-Scale R&D Projects

(Unit: KRW 100 million)

Engineering Research Center(ERC)	Humanities Plus	Source technology development of SW convergence industry
244	88	142
Agricultural Research Center (ARC)	Medical Research Center(MRC)	Support for specialized research labs
150	180	16
Smart Venture Campus	Development of disaster safety technology	Development of bio-source convergence technology
33	634	50
Agricultural Biotechnology Research Center	Support for key research centers	Entrepreneurship Leading University
235	229	24
HuStar Project for Fostering Daegu-Gyeongbuk Innovation Talents	Cutting-edge CT demonstration project in connection with the region	Project for nurturing and supporting university ICT research centers
144	100	51
Beyond Research Innovation & Development for Good Enterprises+(BRIDGE+)	Project for developing and supporting local industry-linked university open-labs	Project for supporting intellectual property profit reinvestment
30	18	7
Project for supporting the R&D of technology-holding company and subsidiaries	Project for fostering universities leading industry-academy-research cooperation	Project for fostering innovative talents for regional intelligence
29	330	180

Total 21 projects **KRW 291.4 billion**

Student-centered University

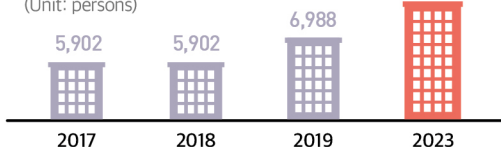


Scholarship rewarded 63.8% in 2021, KRW 75.6 billion paid

- **Scholarships**
On-campus KRW **22.5** billion
Off-campus KRW **53.1** billion
- **33,284** students (63.8%)

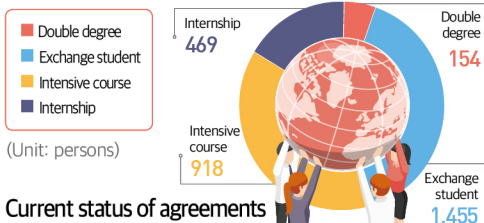
Increased Capacity of the Residence Hall

- Construction of BTL Residence Hall **7,988** (Unit: persons)



Nurturing Next-Generation Global Talents

- Student exchange with overseas universities (2018-2022)



- Current status of agreements with overseas universities

Americas: 82,
Asia-Pacific: 291,
Europe: 167, Middle East and Africa: 17

Global Volunteering and Cultural Experiences

- **Global volunteering:** During vacation; credit acquisition in local universities
- **Global challenge:** Recruitment in every March; being dispatched during summer vacation
- **Korean land field trip:** Dokdo and Ulleungdo ecological trip

Establishment of KNUPIA, a Student Integrated App

- Used by **85%** of enrolled students
- Equipped with **mobile student ID**
- Equipped with **e-voting function**
- **QR code** for using campus facilities
- **Information on campus**
- Equipped with **coupon issuance**

Training programs at Prestigious Overseas Universities Such as Yale in the United States

- All expenses supported by KNU (including tuition)
- **45** students dispatched in 2022



Healthy and Safe Campus Life

- Operating the only clinic-level health care center as a national university
 - ▶ **10** types of vaccinations and **4** types of tests available
- Expansion of student medical insurance union
 - ▶ **2** free health checkups and vaccination support while enrolled in school
- Central Safety Management Headquarters
 - ▶ In order to implement a safe educational environment, the Headquarters plans, guides, and inspects university safety management.

Strong and Comfortable Facilities and Environments

- Carbon Zero Campus
 - ▶ Photovoltaic and fuel cell power generation facilities (KRW **28** billion)
 - ▶ EV charging facilities (76 slow-speed, 2 rapid-speed)
- Replacing outdated air-conditioning facilities, transformers, windows, etc. (KRW **9.6** billion)
- Replacing asbestos finishes (KRW **5** billion)
- Elevators for persons with disabilities (KRW **2.8** billion)
- Improving pedestrian environment on campus (KRW **1.7** billion)

Establishing KNU CUBE, an Integrated Management System for Extracurricular Programs

- Providing customized services for each student by establishing an integrated system for around 1,000 extracurricular programs
- Extracurricular program management, counseling management, monitoring
- Student career exploration, capacity development, employment support, counseling, portfolio utilization

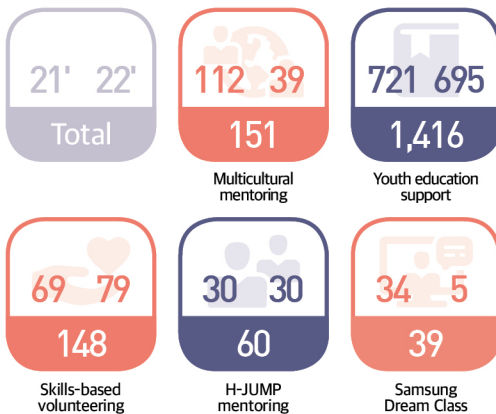
University together with the local community

Community contribution center

- KNU Living Lab to solve local issues
- Professional staff including center head, manager, and team leader
- KRW 200 million invested in 2022
- Demand survey to solve community issues
- ESG forums and social forums
- Establishing local networks between institutions and companies and hosting ESG Social Contribution Partners Day
- Hosting ESG-related cultural and artistic programs

Volunteering and Mentoring Programs

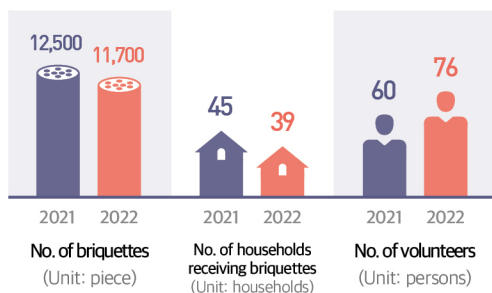
(From 2020; as of August 31, 2021; Unit: person)



Total budget for 2022

KRW **1.8** billion

Love (Briquettes) Sharing Continuous Volunteer Activities



Program With Local Residents

- KNU New Year's Concert (annual event)
- University experience by inviting local high school students (400 students/year)
- Small concert for local residents (occasionally)
- Guest lectures of good writers (occasionally)

Hustar Programs for Innovative Universities

- Nurturing talents who will innovate new industries (robots, ICT) for the future of the region
- Fostering human resources through collaboration between universities, local governments, and participating companies
- **Robotics:** Education on mechanical, electronic, AI, and software
 - Fostering industry-participating convergence talents
- **ICT:** Education on data, network, and AI
 - Fostering local industry contact professionals

Free Physical Training Programs Provided by the Sports Promotion Center



A total of **236** trainees in 2022 (monthly)

High-Quality Lifelong Education Curriculum

Satisfaction **99%**

- **Government-university course:**
A total of **29** projects with **4** local governments

Daegu	Buk-gu Office	Goryeong-gun	Gunwi-gun
6	6	7	10

- **University course:** **98** courses

Self-development	Languages	Health	Investment	Art	Certification, etc.
8	1	4	12	33	40