

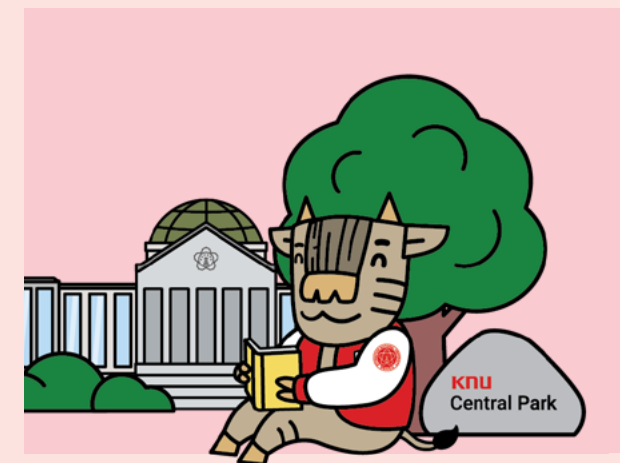
KYUNGPOOK NATIONAL UNIVERSITY



2023 Fall Semester Admission Guide

for International Graduate
Students

KNU KYUNGPOOK
NATIONAL UNIVERSITY



Kyungpook
National
University

Contents

1. ABOUT KYUNGPOOK NATIONAL UNIVERSITY

03 History

03 Numbers

04 KNU Honors

05 Special Programs for International Students

2. ADMISSION GUIDE

06 1 Admission Procedure
Schedule
Flow Chart of Procedures

07 2 Academic Departments
Daegu Campus
Sangju Campus

10 3 Eligibility
Master's Programs and Integrated Master's & Doctoral Programs
Doctoral Programs
Eligibility for Language Proficiency

11 4 Application Procedure
Application Period
Qualification Screening
Department Screening(Interview)

12 5 Required Documents
Application Documents (After completing online application)
Financial Documents
Academic Degree Verification Documents

14 6 Application Fee

14 7 Scholarships (KINGS)
Selection Period
Benefits
Number of Selected Applicants
Qualification Procedure

15 8 Important Notes for Applicants

16 9 Contact Us
Address
Homepage
Person in Charge
Contact

16 10 Tuition Fee
Daegu Campus
Sangju Campus

16 11 Dormitory Fee
Daegu Campus
Sangju Campus

3. APPENDICES

17 Performance Test for Admission into the Department of Music

19 Homepage Addresses and Office Contact Number of Academic Departments

1. ABOUT KYUNGPOOK NATIONAL UNIVERSITY



Daegu(Main) Campus



Sang-ju Campus



Medical Town



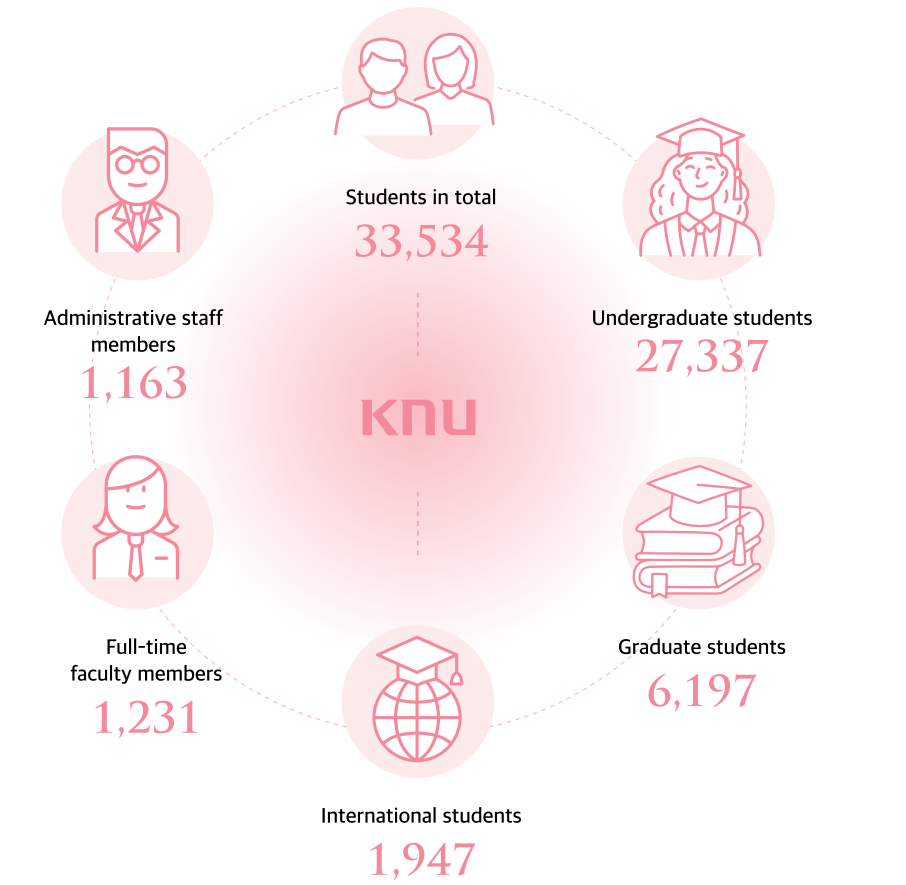
Medical Campus



History

- 1946
Colleges of Education, Medicine and Agriculture in Daegu are upgraded to National Colleges
- 1951
Colleges of Education, Medicine and Agriculture, Liberal Arts and Sciences, Law and Political Sciences combined to create Kyungpook National University
- 1953
First graduate school established
- 2023
Kyungpook National University is now comprised of 17 colleges and 3 schools, 98 Majors, 14 graduate schools, 139 Research Centers

Numbers



KNU Honors

1 Credits

- Awarded IEQAS (International Education Quality Assurance System) accreditation for 9 consecutive years by the Korean Ministry of Education.
- 1st among national universities in Korea(2020~2022)

QS World University Rankings	THE World University Rankings
US News & World Report 'Best Global Universities'	THE World University Impact Rankings (54th in the world)
Largest number of 2021 GKS recipients (28 students)	Center for World University Rankings
World University Rankings from Shanghai Jiao Tong University, Institute of Higher Education Evaluation	Leiden Ranking 2020 Number of top 1% publication

2 Investments from the Korean Government

- BK (Brain Korea) 21 Human Resources Development Projects - BK21 FOUR Project (2020. 9. ~ 2027. 8.): 146,500 million won
 - 21 education research groups and 7 education research leaders selected for funding
- Funding for many other R&D projects (24 projects, totaling 231,760 million won)
- Highest level of Governmental Funding



5 Best Teaching Ability

- Performance of SCI-level thesis per professor ranked 1st among national universities in Korea
- Performance of international thesis per professor ranked 1st among national universities in Korea
- 2 professors in KNU were named on the world's most influential researchers list (HCR)
- 4 professors in KNU published papers at Nature, Science

3 Student-Centered University

- 77.3 billion won worth of scholarships have been provided to KNU students, with 40,250 total beneficiaries and a 75.5% benefit rate.
- KNU offers opportunities to study at the best universities in the world (University of California, Berkeley, Oxford University, Yale University, etc.).
- The KNUPIA mobile application is available for KNU students.
 - KNUPIA provides the Mobile Student ID feature.
 - KNUPIA provides access to campus facilities with a QR code feature.
 - Announcements can be made via push notifications and banners.
- KNU is the only national university that has a hospital-level health care center.
- KNU students can get up to two medical check-ups for free.

4 Lots of Talented Students

- Intensive promotion in the fields of Convergence Education & Research
 - [Research] Artificial Intelligence, Robot and Smart System Engineering, Hydrogen & Renewable Energy, Data Science Technology, Agricultural Life Convergence, East Sea Rim Convergence, Light Convergence Global Leaders, etc.
 - [Education] Agricultural Development in North Korea, Northern Asian Culture & Trade, Business Administration, Psychology, Food Science and Nutrition, Computer Science and Engineering, etc.
- Maintained employment rate of graduates ranked 1st among national universities in Korea
- High number of employments among graduates
 - 1,278 employed by large companies, 680 employed by public institutions (over past 2 years)
- Student Futures Support Center : Operates the Drop-out Prevention Program, Designated Academic Adviser Service for Freshman, and Outreach Program involving student counseling.

Special Programs for International Students

Cultural Experience Program

Provides cultural experience programs that can enhance the understanding of Korea and improve adaptability to life in Korea.
(ex: Daegu City Tour, Cultural Trips, International Day, K-Pop Dance Festival, etc.)

Assistance in Employment

To support international students, KNU offers various special lectures, such as employment training programs, internship programs, and employment information.

Orientation for New International Students

KNU holds an orientation for new incoming students to help them quickly adapt to life in Korea. Through the orientation, international students gain valuable information related to course registration, visa application, insurance, and student ID card acquisition.

Graduation Ceremony

KNU holds a graduation ceremony for international students who graduate from KNU every semester to celebrate the students' achievements.

International Programs

KNU offers various international programs for international students such as an exchange program, summer school program, and provides many opportunities to study abroad.

1:1 Counseling for International Students

International students can receive counseling from both their home department office and the Office of International Affairs regarding any difficulties in their studies and personal life.

2. ADMISSION GUIDE

1 Admission Procedure

01. Schedule

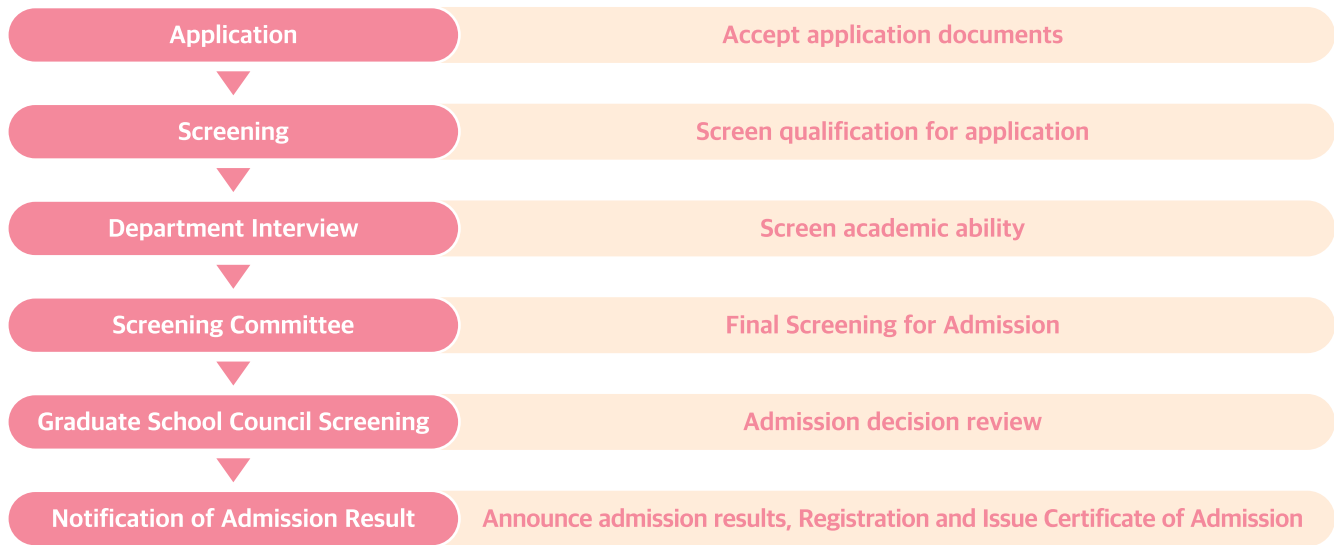
Kyungpook National University



Procedures	Time	Remarks
Online Application	April 17 (Mon) 09:00 to May 4 (Thu), 2023 by 18:00	www.uwayapply.com
Submission of Application Documents	April 17 (Mon) 09:00 to May 11 (Thu), 2023 by 18:00	Office of International Affairs (Cheomseongin Student Futures Support Building 2F), Required documents 5 ①~⑪
Screening Qualifications	May 12 (Fri) to May 23 (Tue), 2023 *Qualification screening confirmation: One of those days : 2023. 5. 18. (Thu) ~ 2023. 5. 22. (Mon)	Individuals who are not eligible will be notified.
Submission of TOPIK Score Report(87th TOPIK)	By May 26(Fri), 2023 by 18:00	Only for applicants who submitted the test slip of the 87th TOPIK
Department Interviews	May 24 (Wed) to June 2 (Fri), 2023	Department to which students applied
Submission of Financial Documents	By June 23 (Fri), 2023	Applicants who are eligible for the department's scholastic ability test
Admissions Committee Screening	By June 28 (Wed), 2023	
Graduate School Council Screening	By July 5 (Wed), 2023	
Notification of Admission Results	By July 7 (Fri), 2023 <expected>	KNU OIA website Notice Board (https://en.knu.ac.kr) and by email
Registration	Middle of July, 2023	The exact schedule will be announced later.
Certificate of Admission	From middle of July, 2023 · Overseas residents : After paying tuition and submitting the certificate of academic background, it is sent to the address written on the application form · In Korea residents : After paying tuition and submitting a certificate of academic background, visit KNU OIA	Office of International Affairs
Submission of Final Academic Verification Documents	By middle of July, 2023(For those who are expecting graduation: until August 25 (Fri), 2023	

02. Flow Chart of Procedures

Kyungpook National University



2 Academic Departments (Number of admissions : based on a department limit)

01. Daegu Campus

Kyungpook National University



* Department Availability : '○' Applicable, 'X' None Applicable

Daegu Campus		Series	Departments(Majors)		Department Availability			
					Master's	Doctoral	Combined Master's and Doctoral	
Graduate School	Humanities, Social Sciences	Korean Language & Literature		○	○	X		
		English Language & Literature		○	○	X		
		History		○	○	X		
		Philosophy		○	○	X		
		French Language & Literature		○	○	X		
		German Language & Literature		○	○	X		
		Chinese Language & Literature		○	○	○		
		Archaeological Anthropology		○	○	○		
		Japanese Language & Literature		○	○	X		
		Korean Literature in Classical Chinese		○	○	X		
		Russian Language & Literature		○	○	X		
		Political Science		○	○	X		
		Sociology		○	○	○		
		Geography		○	○	X		
		Library & Information Science		○	○	X		
		Psychology		○	○	X		
		Social Welfare		Major in Social Welfare Policy and Administration		○	○	X
				Major in Social Welfare Practice		○	○	X
		Media and Communication		○	○	X		
		Ethics Education		○	○	X		
		Economics		○	○	X		
		International Trade		○	○	X		
		Business Administration		○	○	X		
		Law		○	X	X		
		Public Administration		○	○	X		
		Agricultural Economics		○	○	X		
		Education		○	○	X		
		Korean Language Education		X	○	X		
		English Language Education		X	○	X		
		Social Studies Education		X	○	X		
		Humanistic Counseling		○	○	○		
	Natural Sciences	Mathematics		○	○	○		
		Physics		○	○	○		
		Chemistry		○	○	○		
		Life Science		○	○	X		
		Geology		○	○	X		
		Statistics		○	○	○		
		Astronomy		○	○	○		
		Atmospheric Science		○	○	○		

	Series	Departments(Majors)		Department Availability		
				Master's	Doctoral	Combined Master's and Doctoral
Graduate School	Natural Sciences	Oceanography		○	○	○
		Applied Biology		○	○	○
		Food Science & Biotechnology	Major in Food Biotechnology	○	○	○
			Major in Food Biomaterials	○	○	○
			Major in Food Application Technology	○	○	○
		Horticulture		○	○	○
		Agricultural Civil Engineering		○	○	○
		Bio-industrial Machinery Engineering		○	○	○
		Biofibers and Biomaterials Science		○	○	○
		Forestry		○	○	○
		Wood & Paper Science		○	○	○
		Landscape Architecture		○	○	X
		Mathematics Education		X	○	X
		General Science Education		○	○	○
		Home Economics Education		X	○	X
		Child & Family Studies		○	○	X
		Clothing & Textiles		○	○	X
		Food Science & Nutrition		○	○	X
		Nursing		○	○	○
		Public Health *		X	○	X
		Biomedical Science *		○	○	○
		Dental Science		○	○	X
		Pharmacy		○	○	○
		Biomedical Convergence Science & Technology *		○	○	○
		Integrative Biotechnology		○	○	○
		Applied Biosciences		○	○	○
		Integrative Natural Sciences for the East Sea Rim		○	○	X
		Nanoscience & Nanotechnology		○	○	○
		Energy Sciences		○	○	X
	Engineering	Materials Science and Engineering	Major in Materials Science & Metallurgical Engineering	○	○	○
			Major in Electronic Materials Engineering	○	○	○
		Mechanical Engineering		○	○	○
		Architecture		○	○	X
		Architectural, Civil, Environmental and Energy Engineering	Major in Architectural Engineering	○	○	X
			Major in Civil Engineering	○	○	X
			Major in Environmental Engineering	○	○	○
			Major in Energy Engineering	○	○	○
		Applied Chemistry		○	○	○
		Chemical Engineering		○	○	○
		Polymer Science and Engineering		○	○	○
		Textile System Engineering		○	○	X
		Computer Science and Engineering		○	○	○
		Artificial Intelligence		○	○	○
		Robot and Smart System Engineering		○	○	○
		Hydrogen & Renewable Energy		○	○	○
		Electronic and Electrical Engineering		○	○	○
		Data Convergence Computing		○	○	○

	Series	Departments(Majors)		Department Availability		
				Master's	Doctoral	Combined Master's and Doctoral
Graduate School	Engineering	Science and Technology Acceleration Engineering	Major in Science & Technology Policy Administration	○	X	X
			Major in Science & Technology Practical Studies	○	X	X
			Major in Science & Technology Start-up	○	X	X
		Energy Convergence and Climate Change		○	○	X
		Spatial Information		○	○	X
		Carbon and Fiber Composite Materials		○	○	X
		Urban Regeneration		○	○	X
		MetaAI Convergence		○	○	○
		Music		○	○	X
		Korean Classical Music		○	○	X
		Fine Arts		○	○	X
		Design		○	○	X
		Physical Education		○	○	X
	Music & Arts & Physical Education	Medicine *		○	○	X
		Dentistry		○	○	X
		Veterinary Medicine		○	○	○
		Law		X	○	X
	Law School					
	Graduate School of International Studies **	International Culture Studies	Major in Korean Culture Studies	○	X	X
			Major in Korean Education as a Foreign Language	○	X	X

* If you're applying for 'Public Health / Biomedical Science / Biomedical Convergence Science & Technology / Medicine' department, the letter of recommendation from the academic advisor or department head at KNU MUST be submitted.

** The Graduate School of International Studies has evening classes and has 5 semesters.

※ Korean is the principal medium of coursework for most departments, so please check with the department office whether classes are available in English.

02. Sangju Campus

Kyungpook National University

* Department Availability : '○' Applicable, 'X' None Applicable

Sangju Campus	Series	Departments(Majors)	Department Availability		
			Master's	Doctoral	Combined Master's and Doctoral
Graduate School	Humanities, Social Sciences	Tourism	○	X	X
		Ecology Science	○	○	○
	Natural Sciences	Animal BT Science	○	○	○
		Ecology and Environmental System	○	○	○
		Food and Food Service Industry	○	X	X
		Dental Hygiene	○	X	X
		Vector Entomology	○	○	○
		Automotive Engineering	○	○	○
	Engineering	Disaster Prevention and Environmental Engineering	○	○	○
		Software	○	X	X
		Precision Mechanical Engineering	○	○	○
		Energy Materials & Chemical Engineering	○	○	○
		Textile & Fashion Design	○	X	X
		Convergence & Fusion system Engineering	○	○	○
		Advanced Science and Technology Convergence	○	○	○
	Arts & Sports	Leisure Sports	○	○	X
		Digital Fashion	○	○	X

※ Korean is the principal medium of coursework for most departments, so please check with the department office whether classes are available in English.

3 Eligibility

(※ Applicants who hold dual Korean citizenship are prohibited from applying. Citizenship status is determined as that which is held at the date of the application deadline.)

01. Master’s Programs and Integrated Master’s & Doctoral Programs

- A. International applicants must meet all of the following requirements :
- ① He or she holds (or is about to hold) a Bachelor’s degree.

② He or she must be non-Korean nationals.

③ Both of his or her parents must be non-Korean nationals.
- B. Applicants of Korean origin (Entire Education Completed Abroad) must meet all of the following requirements :
- ① He or she holds (or is about to hold) a Bachelor’s degree.

② He or she must be non-Korean nationals.

③ He or she received their entire elementary, junior high, high school, and undergraduate education outside of Korea at a comparable and equivalent level to that which is provided in Korea.

02. Doctoral Programs

Kyungpook National University

- A. International applicants must meet all of the following requirements :
- ① He or she holds (or is about to hold) a Master’s degree

② He or she must be non-Korean nationals.

③ Both of his or her parents must be non-Korean nationals.
- B. Applicants of Korean origin (Entire Education Completed Abroad) must meet all of the following requirements :
- ① He or she holds (or is about to hold) a Master’s degree

② He or she received their entire elementary, junior high, high school, and undergraduate education outside of Korea at a comparable and equivalent level to that which is provided in Korea

③ He or she must be non-Korean nationals.

03. Eligibility for Language Proficiency

Kyungpook National University

- A. Applicants who want to apply for the following departments MUST meet required conditions :
- (※ Applicants to the following departments **MUST submit the language proficiency test results by May 11 (Thu), 2023 with other application documents.**)
- ※Those who take the 87th [Test Date : April 8th ~ 9th] TOPIK exam can apply with a test identification slip, but must submit a TOPIK certificate for the required level or higher by May 26(Fri), 18:00, 2023. If the applicant cannot submit the required level of TOPIK, the applicant cannot pass the screening.

Departments		Eligibility for Language Proficiency
Graduate School	Korean Language & Literature / Psychology	TOPIK level 5 or higher
	English Language & Literature / History/Philosophy / French Language & Literature / German Language & Literature / Korean Literature in Chinese Characters / Sociology/Geography / Social Welfare(Major in Social Welfare Policy and Administration, Social Work Practice) / Media and Communication / Business Administration / Public Administration / Political Science	TOPIK level 4 or higher
	Economics / International Trade / Fine Arts / Science and Technology Acceleration Engineering	TOPIK level 3 or higher
	Nursing	Meet both ① and ② stated in 3. Eligibility-B
	Korean Culture Studies	TOPIK level 3 or higher
Graduate School of International Studies	Teaching Korean as a Foreign Language	TOPIK level 5 or higher

※ If any required documents are found to be false or counterfeit, the applicant’s admission will be cancelled.

- B. Except for the departments above, applicants must provide one of the following as proof of language proficiency :
- ① Korean proficiency : a TOPIK certificate for level 3 or higher
※ Those who take the 87th [Test Date : April 8th ~ 9th] TOPIK exam can apply with a test identification slip, but must submit a TOPIK certificate for the required level or higher by May 26(Fri), 18:00, 2023. If the applicant cannot submit the required level of TOPIK, the applicant cannot pass the screening.

② English proficiency : a score report from a recognized English proficiency test such as : TOEFL iBT 71, IELTS 5.5, CEFR B2, NEW TEPS 326 or higher

③ Being a native speaker of English
* Applicants do not need to submit an English score report if they are from a country whose official language is English (USA, UK, Canada, Australia, New Zealand, Republic of South Africa, and Ireland).

④ Applicants who have completed all years of undergraduate (for Master applicants) or master (for Doctoral applicants) fully in Korean or English, and can submit the official documents from the university proving that courses were taught fully in Korean/ English.

⑤ Applicants who do not have an authorized language proficiency test score, but have the ability to study in Korean or English.
* In case of ④ and ⑤ above, each department will evaluate applicant’s language proficiency during the department interview, and the department should submit ‘a confirmation letter of English or Korean proficiency’ directly to the Office of International Affairs. (The applicant oneself does not submit it, but the department should submit it to KNU OIA.)

4 Application Procedure

1. Application Period

- A. On-line Application : April 17 (Mon) to May 4 (Thu), 2023 by 18:00
- ① Application website : To be announced later on the KNU website
※ Website Address : <https://en.knu.ac.kr/admission/foreign02.htm> (“On-line application” Tab)

② Application Number : Automatically created after you complete the online application.
- B. Submission of Applications : All required documents should be submitted to the Office of International Affairs by person or post.
- ① Submission Period : April 17 (Mon) to May 11 (Thu), 2023 by 18:00

② Where to Submit : The Office of International Affairs (Cheomseongin Student Futures Support Building 2F)

③ How to Submit : Applicants should submit completed and printed application forms downloaded from the online application site, along with required documents ①~⑪ in section 5 Required Documents.

2. Qualification Screening

- A. Screening Period : May 12 (Fri) to May 23 (Tue), 2023
- B. Screening Method : Examination of the suitability of applicants’ academic background and language proficiency, so as to be deemed as “qualified” or “unqualified”.

3. Department Screening (Interview)

- A. Screening Period : May 24 (Wed) to June 2 (Fri), 2023
- B. Screening Method : Interview
- * Interviews by non face-to-face methods (telephone, online) are not acceptable for the following departments :
- | Departments which does not accept non face-to-face interview | |
|--|--|
| Graduate School | Korean Literature in Chinese Characters / Geography / Psychology / Social Welfare(Major in Social Welfare Policy and Administration, Social Work Practice) |
- C. Each departments will make notice for the interview schedule and place.
- D. Comprehensive evaluation of the candidate’s previous degree performance, language eligibility, study plan, and major knowledge, so as to be deemed as “qualified” or “unqualified” by each of applied majors.
- E. Language eligibility will be screened and [a confirmation letter of English or Korean proficiency] will be issued for the qualified.

5 Required Documents

01. Application Documents (After completing online application)

* ‘○’: Required documents, ‘△’: Applicable only

Required Documents	MA	Ph.D.	Combined M&Ph.D.	Note
① Completed Application Form	○	○	○	Print the online application and submit with other documents.
② Statement of Purpose and Study Plan	○	○	○	KNU format on KNU website (https://en.knu.ac.kr/admission/foreign02.htm) in English or Korean
③ One Letter of Recommendation from a Professor at a Previously Attended University or a Prospective Professor at KNU	△	△	△	KNU format on KNU website (https://en.knu.ac.kr/admission/foreign02.htm) * NOTE : A Letter of recommendation must be sealed with the recommender's signature on the envelope. * If you're applying for 'Public Health / Biomedical Science / Biomedical Convergence Science & Technology / Medicine' department, the letter of recommendation from the prospective professor or department head at KNU MUST be submitted.
④ Degree Certificate or Certificate of (Expected) Graduation from Universities Attended Previously	○	○	○	- Those who graduated in China : Attested Certificate of Graduation, Attested Certificate of Degree, China Academic Degree (CHSI) report (in English) - Those who graduated in other countries : Apostille or attested degree documents by Korean embassy * NOTE : If you are currently enrolled in an undergraduate or graduate program, you should submit an official document that indicates your expected date of graduation. * Applicants for doctoral course should submit BOTH Bachelor's and Master's degree documents. * Transfer students with Bachelor's degree should submit degree document before transfer. * Applicants who submitted provisional certificate or expected graduation certificate should submit final graduation certificate after notice of admission result. * Applicants of Korean origin (Entire Education Completed Abroad) should submit certificates of entire education from elementary to university.
⑤ Official Transcripts from Universities Attended Previously	○	○	○	Notarized or Original (in Korean or English) * Transfer students with Bachelor's degree should submit transcripts before transfer. * Applicants for doctoral course should submit both Bachelor's and Master's Transcripts. * Applicants of Korean origin (Entire Education Completed Abroad) should submit certificates of entire education from elementary to university.
⑥ Language Proficiency Test Results (TOPIK, IELTS, TOEFL iBT, etc.)	○	○	○	Score Report (Transcript) (Original or Copy) * Only accepted with valid expiry date (issued after April 17, 2021) * We do not accept TOEFL ITP Test Results.
⑦ Certificate of Enrollment and Transcript at a Korean Language Institute	△	△	△	if applicable
⑧ Copy of Applicant's Alien Registration Card (front and back)	△	△	△	for Korean visa holders
⑨ Copy of Applicant's Passport	○	○	○	Page with photo and passport number * Please refer to page 13 ※Note for details.
⑩ Full Birth Certificate or Family Census Register	○	○	○	Official documents indicating parents' nationality and relationship with applicant * Please refer to page 13 ※Note for details.
⑪ Portfolio	○	○	X	Applicants applying for department of Fine Art or Design

* Applicants to the School of Business Administration and Department of Dentistry should write their interested field in the Statement of Purpose and Study Plan. (Ex: Accounting, Marketing, etc – Business Administration / Oral Pathology, Orthodontics, etc – Dentistry)
* Applicants to the Department of Music must prepare an actual article test for the interview, and should write their interested field in the Statement of Purpose and Study Plan. (refer to page 17-18 <Appendix>)
* Applicants to the Department of Fine Art or Design must submit ⑪ a portfolio (A4 size, 10 pages) with the other application documents.

※ Note :

- ① All required documents must be submitted in person or by post. (Not permitted to submit by email)
- ② All required documents must be submitted in the order of the list above. (Do not use staplers, clips, etc.)
- ③ Prospective graduates must submit their expected certificate of graduation indicating the expected graduation date (year and month). The final certificate of graduation (completed) and transcripts (completed) should be submitted by August 25 (Fri), 2023.
- ④ Passport : The expiration date must be after the semester start date.
 - Applicants with Uzbekistan nationality must submit the new passport, which is available for overseas travel.
- ⑤ Documents to present the relationship between the applicant and his or her parents
 - The document should present the nationality and relationship between the applicant and his or her parents (Documents should be notarized in Korean or English, if the original documents are in other languages.)
 - If your parents are dead (or divorced), death (or divorce) certificate should be submitted.

<Examples of Family Census Register>

Philippines : Family Census, Indonesia : KARTU KELUARGA, Bangladesh : Birth Certificate,
Vietnam : So Ho Khau or Giay khai sinh, Mongolia : Certificate of Family Relations, Pakistan : Family Certificate,
Sri Lanka : Birth Certificate, Myanmar : Family Relations Certificates,
Nepal : Birth Certificate, Kyrgyzstan · Kazakhstan · Uzbekistan · Ukraine · Thailand : Birth Certificate

- ⑥ Documents in another language (except Korean and English) should be accompanied with a notarized translation in Korean or English.
- Only certificate/documents notarized within 6 months before submission will be accepted.

02. Financial Documents

A. For whom : Applicants who have passed department interview

B. Submission Period : After passing the department interview ~ June 23 (Fri), 2023

C. Required documents to submit must meet one of the following :

- ① **Original bank certificate of deposit balance(in English) showing the amount of USD 18,000**
 - * According to the Ministry of Justice's and Education Guidelines
 - * Submit bank deposit balance certificate in name of **applicant's own name** or **a parent's name**.
 - * Submit the certificate of employment or business registration certificate(English or Korean) of a parent's when submitting the balance certificate of the parent's name
 - * Bank deposit balance certificate under other names (friends, relatives except parents, etc) cannot be accepted.
 - * Issued within 30 days prior to the submission date
- ② **Scholarship Certificates from Other Organizations**
 - * If applicants are financially supported from their own countries' government or another organization.
 - * If an academic advisor is the financial guarantor, the academic advisor's certificate of financial support and his/her employment certificate can be substituted for the above documents. (KNU format will be provided to academic advisors directly upon request, and should be submitted directly from the professor to KNU OIA).

- A. For whom :** Final successful applicants
- B. When :** by middle of June, 2023 (For applicants who are expecting graduation : by August 25, 2023)
- C. Required documents :** Successful applicants must submit one of the following documents :

- ① **Apostille Certificate** of your previous academic documents
* Unavailable Document : Provisional Certificate, expected graduation certificate
- ② Documents **verified by the Korean Embassy in other countries or the Embassy in Korea**
- ③ Documents **confirmed by the China Academic Degree (CHSI) & Graduate Education Development Center (CDGDC)** (Only for applicants who hold a degree from universities in China)
* Applicants who graduated from Universities in Korea can submit a copy of the degree instead of verified copies.

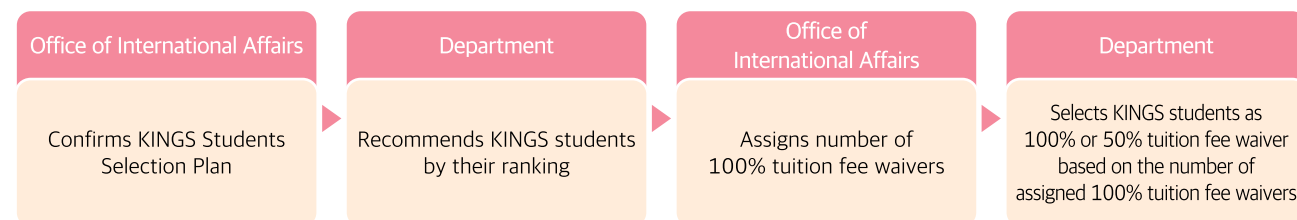
6 Application Fee : KRW 80,000 (General management cost 60,000+Interview fee 20,000)

1. The application fee should be paid using the on-line payment system.
2. Failure to pay the application fee during the application period will result in cancellation.
3. You can get the application number after payment of the application fee.
* **NOTE : It is not possible to revise the contents of the application after payment.**

7 Scholarships (KINGS : KNU International Graduate Scholarships) and Benefits

1. **Selection Period :** Before the beginning of every semester (up to 4th semesters for Master and Doctoral, up to 8th semesters for Combined Master's and Doctoral)
2. **Benefits :** 100% or 50% of tuition fees waived
3. **Number of Selected Applicants**
A. New international students : up to 70 applicants based on 100% tuition payment
B. Enrolled international students : up to 210 applicants based on 100% tuition payment
4. **Qualification**
A. New Students
A-1) Students recommended by department after the department screening by the ranking order
A-2) Up to 70 applicants based on 100% tuition payment
B. Enrolled Students
B-1) International graduate students scheduled for next semester who received higher than a B0 grade in the previous semester
B-2) Up to 210 applicants based on 100% tuition payment
* Scholarship beneficiary is selected every semester after the screening.

5. Procedure



8 Important Notes for Applicants

1. All documents should be in Korean or English. Documents in other languages should be accompanied by a notarized Korean or English translation.
2. If any required documents are found to be false or counterfeit, the applicant's admission will be cancelled.
3. Applicants submitting a certificate of expected graduation must submit the original copy or a notarized copy of the graduation certificate before beginning their first semester **(August 25, 2023)** at Kyungpook National University.
4. The Office of International Affairs is not responsible for the cancellation of admission due to incorrect contact information (such as address and phone number, etc.).
5. If an applicant's visa is not issued or is rejected, his or her admission will be cancelled.
6. Applicants receiving a scholarship of more than USD 18,000 from another institution are not required to submit a certificate of financial guarantee; however, they must submit a certificate/letter of confirmation from the institution that will pay their tuition during their period of study at Kyungpook National University.
7. Submitted documents or application fees will not be returned to the applicant. (Original copies of certificates of degree can be returned upon request after the screening process is completed.)
8. As many applications will be expected on the last day of the online application, please complete the application before the deadline.
9. Application number for each applicant will be created after your online application and it will be used frequently during the application process, so please note it.
10. If the applicant does not have sufficient academic ability, he/she may not be selected.
11. International students who are admitted to the university or enrolled at KNU must have Korean health insurance. According to the National Health Insurance Act and its Enforcement Decree, international students who stay in Korea more than 6 months must have National Health Insurance (**국민건강보험**) in Korea from March 1, 2021.
12. Further details, if not stated in this guide, will be in accordance with the Office of International Affairs at KNU.
13. Personal information of applicants will be collected and used for the admission process as shown below.
- Articles collected and used: Name, Alien Registration No., Passport No., Address, Name of school graduated from, Telephone No., Mobile Phone No., Email, Language grades, Period of overseas education, Period of Stay, Account No., etc.
- Purpose of collection and use: Admission Process, Visa, Academic Affairs, Scholarships, Statistics, Selection of Dormitory Residents, Admission Instructions

Receiver of Information		Provided Information	Purpose of Provision	Holding Period
KNU	University Headquarter (Registrar Office, Office of Student Affairs, Finance department, etc.)	Name, Alien Registration No., Address, Telephone No., Information of application, Name of School graduated from, etc.	Creating the school register, Selection of Scholarship students, Statistics, Tuition fee payment, etc.	Until the purpose of process is achieved.
	College, School and Department office	Name, Telephone No., Name of School graduated from, Language grades, etc.	Conducting the interview, etc.	
	Dormitory Office	Name, Alien Registration No., Information of Application, etc.	Selection of Dormitory residents, Sending the instructions, etc.	
	KNU Language Institute, IT Education Center	Name, Telephone No., etc.	introducing the program	
Third Party	Ministry of Justice, Immigration office	Name, Alien Registration No., Address, Telephone No., Information of application, Grades, Name of School graduated from, etc.	Issuing the Certificate of Admission, Service for immigration, etc.	
	Korea Council for University Education	Name, Alien Registration No., Information of application, etc.	Using the application system, etc.	

9 Contact Us

1. Address : Office of International Affairs, Kyungpook National University (Cheomseongin Student Futures Support Building - Building No. 108) 80 Daehak-ro, Buk-gu, Daegu, 41566, Republic of Korea
2. Homepage : <https://en.knu.ac.kr>
3. Person in Charge : CHO, Hyeon Rae(Mr.)
4. Contact : (Tel) +82-53-950-2436, (Fax) +82-53-950-2419, (E-mail) admission@knu.ac.kr

10 Tuition Fee

1. Daegu Campus

(per semester as of 2023)

Department Type	Entrance Fees(KRW)	General Tuition(KRW)	Total(KRW)
Humanities, Social Sciences	189,000	2,381,000	2,570,000
Natural Sciences, Physical Education (including Department of Nursing, Biomedical Science, Dental Science)		3,077,000	3,266,000
Engineering		3,142,000	3,331,000
Music & Arts		3,789,000	3,978,000
Music & Arts(Korean Classical Music, Music)		3,914,000	4,103,000
Medicine(Master)		4,446,000	4,635,000
Medicine(Doctor)		4,549,000	4,738,000
Dentistry(Master)		4,446,000	4,635,000
Dentistry(Doctor)		4,549,000	4,738,000
Veterinary Medicine(Master, Doctor)		4,343,000	4,532,000
Pharmacy		3,418,000	3,607,000
Law School(Doctor)	186,500	2,238,000	2,424,500
Graduate School of International Studies	189,000	2,515,000	2,704,000

* Note : Total amounts are subject to change.

2. Sangju Campus

(per semester as of 2023)

Department Type	Entrance Fees(KRW)	General Tuition(KRW)	Total(KRW)
Humanities, Social Sciences	189,000	2,381,000	2,570,000
Natural Sciences, Physical Education		3,077,000	3,266,000
Engineering		3,142,000	3,331,000
Arts		3,789,000	3,978,000

* Note : Total amounts are subject to change.

11 Dormitory Fees

1. Daegu Campus (<http://dorm.knu.ac.kr>)

	Bongsa/ Hwamok-Gwan (Double)	Cheomsung- Gwan (Double)	Myungyui-Gwan (Double)	Myungyui-Gwan (Single)	Note	
Room Fees (KRW)	579,600	650,500	791,900	1,345,800	* Dormitory expenses are separately charged during the vacation period. * Students assigned to Cheomsung-Gwan use cafeteria at Cheomsung-Gwan. * Total amount are subject to change.	
Meals/Day	1 meals/day	1.5 meals/day	2 meals/day	2.5 meals/day		
Meal Plans (KRW)	460,000	636,400	775,200	883,500		
					3 meals/day	Per 1 Ticket
					920,700	4,800

* Students majoring in Medicine and Dentistry are assigned to Myungyui-Gwan (Medical Campus).

2. Sangju Campus (https://dorm.knu.ac.kr/scdorm/_new_ver/)

	Chungwoon-Gwan (Male, Double)		Noak-Gwan (Female, Double)	Note
Room Fees (KRW)	618,300		618,300	* Dormitory expenses are separately charged during the vacation period. * Total amounts depend on meal selection. * Total amounts are subject to change.
Meals/Day	1 meal/day	2 meals/day	3 meals/day	
Meal Plans (KRW)	463,300	836,200	1,050,900	

3. APPENDICES

1 Performance Test for Admission into the Department of Music

- The departmental assessment(student ability test) for the Department of Music is a performance test, and applicants must prepare their test pieces (see below) and perform them in person. (The department will notify the applicants of the test schedule after the eligibility check period.)
- If an applicant is not residing in Korea during the departmental assessment period, one may submit a video recording of a musical performance of one's test piece. However, one can only submit a video that was recorded during the application period.
- In case the submitted video was fake or forged in any way, one's permission for admission can be revoked.
- The schedule of the departmental assessment for the composition or theory major will be notified in the future.

1. Master's

Major		Test Piece	Time
Singing		1. Choose one song from an opera or oratorio 2. Sing two songs from among German, French, Italian, English and American art songs randomly selected at the time of Performance Test	
Piano		1. One song from Beethoven Sonata (whole movements) 2. One free song from romantic, impressionist, or modern song (Whole movements for sonata, whole song for suite or variations)	
Composition		Compose one piano piece in the given theme (free style)	180 mins.
Orchestra	Violin	One piece from W. A. Mozart concerto op.3, op.4, op.5 and F. Mendelssohn concerto E minor (Whole movements including Cadenza)	
	Cello	One piece from J. Haydn concerto D major (Gendron Cadenza) or E. Lao concerto D minor (only the first movement)	
	Others	Free choose one high level concerto (whole movements including Cadenza)	
Theory		Analyze Mozart Piano Sonata : analysis of chord, analysis of form	90 mins.

- * Note 1. Performances must be played without looking at the score.
- * Note 2. Applicants for Singing and Orchestra must be accompanied by a pianist.
- * Note 3. Applicants must bring their own instruments (except for Piano).

2. Doctoral

Major		Test Piece	Time
Singing		Applicants must sing at least one art song from each of the following 6 categories(in about 30 minutes in total): 1:German; 2:French; 3:Italian; 4: English and American; 5:Oratorio(Cantata, Motet etc.); 6:Opera aria * No.1, No.2, No.3, No.4 must be one song of more than two ages, No.5, No.6 must be one song in a different language	
Piano		Solo program of three ages for more than 60 minutes (including Sonata whole movements)	
Composition		Compose a programmatic song by given them (Piano trio)	180 mins.
Orchestra	Violin	1. J. S. Bach unaccompanied Sonata ① No.1 g minor op.1, op.2 movement ② No.2 a minor op.1, op.2 movement ③ No.3 C Major op.1, op.2 movement Choose one from above ①, ②, ③ 2. Choose one from N. Paganini Caprice Op.1 No. 1, 5, 9, 11, 17, 24 3. Choose one from W. A. Mozart, L. v. Beethoven Sonata (whole movements) 4. Choose one from F. Mendelssohn, L. v. Beethoven, P. I. Tchaikovsky, and J. Sibelius Concerto(whole movements)	
	Cello	1. J. S. Bach unaccompanied suite ① No.1 Prelude, Sarabande, Gigue ② No.2 Prelude, Sarabande, Gigue ③ No.3 Prelude, Sarabande, Gigue Choose one from above ①, ②, ③ 2. Choose two from D. Popper Etude Op.73 No.7, 8, 17, 22, 35 3. Choose one from L. v. Beethoven Sonata (whole movements) 4. Choose one from romantic Concerto (whole movements)	
	Flute	1. Choose two from N. Paganini 24 Caprices Op.1 (International version) 2. J. S. Bach Partita in a minor (Bärenreiter version) 3. One song of romantic Concerto (Whole movements)	
	Oboe	1. Baroque Sonata (whole movements) 2. W. A. Mozart Concerto in C Major K.314 (whole movements including cadenza) 3. Choose one from romantic Concerto (whole movements)	
Theory		Analyze Beethoven middle period piano sonata works : analysis of chord, analysis of form	90 mins.

* Note 1. Singing, Piano, Violin, Cello, Flute, Oboe major performance must be played without looking at the score.
* Note 2. Applicants for Singing and Orchestra must be accompanied by a pianist.
* Note 3. Applicants must bring their own instruments(except for Piano).

2 Homepage Addresses and Office Contact Number of Academic Departments

01. Daegu Campus		Kyungpook National University	
Series	Majors	Homepage Address Black : English / Red : Korean	Office Phone No. (+82-53-950-)
Humanities, Social Sciences	Korean Language & Literature	http://korean.knu.ac.kr	5106
	English Language & Literature	https://enenglish.knu.ac.kr	5120
	History	https://khistory.knu.ac.kr/	5135
	Philosophy	http://philosophy.knu.ac.kr/	5148
	French Language & Literature	http://france.knu.ac.kr/	5159
	German Language & Literature	http://german.knu.ac.kr/	5169
	Chinese Language & Literature	http://chinese.knu.ac.kr	5178
	Archaeology and Anthropology	http://aran.knu.ac.kr/	5186
	Japanese Language & Literature	http://japan.knu.ac.kr/	6150
	Korean Literature in Classical Chinese	http://hanmun.knu.ac.kr/	6160
	Russian Language & Literature	http://knurussian.kr/	6170
	Political Science	http://politics.knu.ac.kr/	5206
	Sociology	http://socio.knu.ac.kr/	5218
	Geography	https://engeog.knu.ac.kr/ http://geog.knu.ac.kr/	5227
	Library & Information Science	https://lis.knu.ac.kr/	5236
	Psychology	http://psy.knu.ac.kr/	5244
	Social Welfare	Major in Social Welfare Policy and Administration	http://knusw.knu.ac.kr/
		Major in Social Welfare Practice	
	Media and Communication	https://mediacomm.knu.ac.kr/ https://enmediacomm.knu.ac.kr	5259
	Ethics Education	http://ethedu.knu.ac.kr/	5868
	Economics	http://econ.knu.ac.kr/	5428
	International Trade		
	Business Administration	http://biz.knu.ac.kr/	5439
	Law	http://lawschool.knu.ac.kr	5456
	Public Administration	http://puad.knu.ac.kr/	3733
	Agricultural Economics	http://frecon.knu.ac.kr/	5765
	Education	http://edu.knu.ac.kr/	5806
	Korean Language Education	http://koredu.knu.ac.kr/	5821
	English Language Education	http://enged.knu.ac.kr/	5829
	Social Studies Education	http://hisedu.knu.ac.kr/ http://geoedu.knu.ac.kr/ http://ilsa.knu.ac.kr/	5848
		http://inca.knu.ac.kr	
	Humanistic Counseling	http://inca.knu.ac.kr	6121

Series	Majors		Homepage Address Black : English / Red : Korean	Office Phone No. (+82-53-950-)	
Natural Sciences	Mathematics		http://math.knu.ac.kr/	7325	
	Physics		https://physics.knu.ac.kr/	5316	
	Chemistry		http://chem.knu.ac.kr/	5329	
	Life Science		https://biotechnen.knu.ac.kr/ https://bioen.knu.ac.kr/	5381	
	Geology		http://geology.knu.ac.kr/	5354	
	Statistics		http://stat.knu.ac.kr http://staten.knu.ac.kr	5364	
	Astronomy		http://hanl.knu.ac.kr/	6360	
	Atmospheric Science				
	Oceanography		http://ocean.knu.ac.kr/	5396	
	Applied Biology		http://agbl.knu.ac.kr/	5758	
	Food Science & Biotechnology	Major in Food Biotechnology		http://foodbio.knu.ac.kr	5772
		Major in Food Biomaterials			5750
		Major in Food Application Technology			7761
	Horticulture		http://horti.knu.ac.kr/	5721	
	Agricultural Civil Engineering		http://acen.knu.ac.kr/	5730	
	Bio-industrial Machinery Engineering		https://bime.knu.ac.kr/	5790	
	Biofibers and Biomaterials Science		http://biofiber.knu.ac.kr/	5737	
	Forestry		http://forestry.knu.ac.kr/	5744	
	Wood & Paper Science		http://wood.knu.ac.kr/	5795	
	Landscape Architecture		http://land.knu.ac.kr/	5779	
	Mathematics Education		https://matheduen.knu.ac.kr/ http://mathedu.knu.ac.kr/	5882	
	General Science Education		http://physed.knu.ac.kr/ http://chemedu.knu.ac.kr/ http://bioedu.knu.ac.kr/ http://earthed.knu.ac.kr/	5909	
	Home Economics Education		http://homeeduen.knu.ac.kr/ http://homeedu.knu.ac.kr/	5923	
	Child & Family Studies		http://child.knu.ac.kr/	6210	
	Clothing & Textiles		http://fashion.knu.ac.kr/	6220	
	Food Science & Nutrition		http://fsnu.knu.ac.kr/	6230	
	Nursing		http://nurse.knu.ac.kr http://nurs.knu.ac.kr	+82-53-420-4938	
	Public Health		http://health.knu.ac.kr	+82-53-420-4860	
	Biomedical Science		http://enbiomed.knu.ac.kr/ https://biomed.knu.ac.kr/	+82-53-420-4910	
	Dental science		https://dent.knu.ac.kr/eng	+82-53-660-6805	
	Pharmacy		https://pharmacy.knu.ac.kr/	3684	
	Biomedical Convergence Science & Technology		https://bst.knu.ac.kr/	3884	
	Integrative Biotechnology		https://intbiology.knu.ac.kr/	6389	
	Applied Biosciences		http://pbs.knu.ac.kr/	5706	
			http://kac.knu.ac.kr/	5714	
	Integrative Natural Sciences for the East Sea Rim		https://esr.knu.ac.kr	4597	
	Nanoscience and Nanotechnology		http://nst.knu.ac.kr/	5381	

Series	Majors		Homepage Address Black : English / Red : Korean	Office Phone No. (+82-53-950-)
Engineering	Materials Science and Engineering	Major in Materials Science & Metallurgical Engineering	https://metal.knu.ac.kr/	5559
		Major in Electronic Materials Engineering	http://emse.knu.ac.kr/	5631
	Mechanical Engineering		http://me.knu.ac.kr	5569
	Architecture		http://arch.knu.ac.kr	5590
	School of Architectural, Civil, Environmental and Energy Engineering	Major in Architectural Engineering		
		Major in Civil Engineering	https://civil.knu.ac.kr https://civilen.knu.ac.kr	5607
		Major in Environmental Engineering	https://env.knu.ac.kr/ https://enve.knu.ac.kr/	6580
		Major in Energy Engineering	http://energy.knu.ac.kr	8970
	Applied Chemistry		http://appchem.knu.ac.kr	5581
	Chemical Engineering		https://cheme.knu.ac.kr/ https://chemeen.knu.ac.kr/	5615
	Polymer Science and Engineering		http://polymer.knu.ac.kr/	5623
	Textile System Engineering		http://textile-eng.knu.ac.kr	5638
	Computer Science and Engineering		http://computer.knu.ac.kr	6420
	Artificial Intelligence		https://ai.knu.ac.kr/	3884
	Hydrogen & Renewable Energy		http://hnrenergy.knu.ac.kr/	
	Robot and Smart System Engineering		https://robot.knu.ac.kr/	3884
	Electronic and Electrical Engineering	Electronics	http://see.knu.ac.kr/eng/	6558
		Electrical	http://electric.knu.ac.kr/	5600
	Data Convergence Computing		https://bigdata.knu.ac.kr/	6446
	Science and Technology Acceleration Engineering	Major in Science & Technology Policy Administration	https://stae.knu.ac.kr/	7514
		Major in Science & Technology Practical Studies		
		Major in Science & Technology Start-up		
	Energy Convergence and Climate Change		https://home.knu.ac.kr/HOME/climate/	5562
	Spatial Information		https://gis.knu.ac.kr/	7514
	Carbon and Fiber Composite Materials		-	5638
	Urban Regeneration		http://urbanre.knu.ac.kr	7314
	MetaAI Convergence		-	3884
Music & Arts & Physical Education	Music		http://music.knu.ac.kr/	5656
	Korean Classical Music		http://kmusic.knu.ac.kr/	5670
	Fine Arts		http://arts.knu.ac.kr/	5680
	Design		http://vcd.knu.ac.kr/	5694
	Physical Education		http://sport.knu.ac.kr/	5930
Medicine	Medicine		http://med.knu.ac.kr	+82-53-420-4910
	Dentistry		https://dent.knu.ac.kr/eng/main/main.jsp	+82-53-660-6805
	Veterinary Medicine		http://vet.knu.ac.kr/	5957
Graduate School of International Studies	International Culture Studies	Major in Korean Culture Studies	http://gsis.knu.ac.kr/	6127
		Major in Korean Education as a Foreign Language		

Series	Majors	Homepage Address Black : English / Red : Korean	Office Phone No. (+82-54-530-)
Humanities, Social Sciences	Tourism	http://tour.knu.ac.kr/	1380
Natural Sciences	Ecology Science	https://entomology.knu.ac.kr/	1210
	Animal BT Science	https://axt.knu.ac.kr/	1950
	Ecology and Environmental System	http://sees.knu.ac.kr	1240
	Food and Food Service Industry	http://ffsi.knu.ac.kr	1300
	Dental Hygiene	http://dehy.knu.ac.kr	1420
	Vector Entomology	https://entomology.knu.ac.kr/	1210
Engineering	Automotive Engineering	http://auto.knu.ac.kr/	1136
	Disaster Prevention and Environmental Engineering	http://cdue.knu.ac.kr/	1440
	Software	http://se.knu.ac.kr/	1450
	Precision Mechanical Engineering	https://pme.knu.ac.kr	1270
	Energy Materials & Chemical Engineering	https://emce.knu.ac.kr/	1410 1330
	Textile & Fashion Design	http://textile.knu.ac.kr/	1280
	Convergence & Fusion system Engineering	http://cfse.knu.ac.kr/	1480
	Advanced Science and Technology Convergence	https://astc-bk21.knu.ac.kr/	1250
Sports	Leisure Sports	http://dols.knu.ac.kr/	1430
	Digital Fashion	https://style.knu.ac.kr	1310

