

UNIVERSITY OF  
WOLLONGONG  
AUSTRALIA



PERSONALISED EXPERIENCES : WORLD-CLASS RESULTS

# ADVANCE YOUR CAREER

International Postgraduate Guide 2016









# CONTENTS

2	Rankings and Ratings
3	Welcome to UOW

---

4	OUR HOME: WOLLONGONG
6	Welcome to Wollongong
8	Location and Transport

---

10	STUDENT LIFE AT UOW
12	Campus Life
14	Sydney Campus
16	Innovation Campus
17	UOW in Dubai
18	An Internationally Linked University
20	Careers, Employment and Internships
24	Services and Support
26	UOW Living
28	Cost of Living

---

30	STUDY OPTIONS
31	How to Use This Guide
32	Scholarships

---

33	RESEARCH
34	Types of Research Degrees
37	Faculty of Business/Sydney Business School
37	Faculty of Engineering and Information Sciences
38	Faculty of Law, Humanities and the Arts
38	Faculty of Science, Medicine and Health
39	Faculty of Social Sciences

---

40	COURSEWORK
42	Business/Sydney Business School
49	Education
53	Engineering
56	Health and Medicine
59	International Studies
60	Information and Communications Technology
64	Law, Ocean Law and Policy
66	Mathematics and Statistics
67	Physics
68	Psychology
69	Public and Population Health
71	Science

---

74	APPLYING TO UOW
75	Academic Entry Requirements
76	English Language Requirements
78	Fees and How to Apply
79	Important Dates

# RANKINGS AND RATINGS

At UOW, we're proud to be among the best modern universities in the world. In fact, 2014 was the eighth year in a row that employers ranked our graduates as some of the most career-ready in the world.



## TOP 100 IN THE WORLD FOR GLOBAL GRADUATES

For the eighth year UOW is ranked in the top 100 universities in the world in the QS World University Rankings Graduate Employers survey. This review rates institutions based on employers' opinions of their graduates - QS World University Rankings 2014/2015



## GLOBALLY RANKED AS ONE OF AUSTRALIA'S BEST MODERN UNIVERSITIES

- 26th in the world – QS Top 50 Under 50 Rankings 2014
- 31st in the world – Times Higher Education Top 100 Under 50 Rankings 2015



## TOP 2% OF UNIVERSITIES IN THE WORLD

- 283rd in the world – QS World University Rankings 2014/2015
- 282nd in the world – Times Higher Education World University Rankings 2014/2015
- 329th in the world – Academic Ranking of World Universities (ARWU) 2014
- 348th in the world – U.S. News Best Global Universities Ranking 2014
- 314th in the world for research quality – 2014 Leiden Ranking



## GLOBALLY RATED A FIVE-STAR UNIVERSITY

- 5 Star rating – QS World University Rankings 2014
- 5 Star rating in the 2015 Good Universities Guide for Student Retention and Getting a Full-Time Job

# WELCOME

At the University of Wollongong we believe that world-class results, the most exciting developments, and the biggest collaborations all start with the individual—with students like you.

At the University of Wollongong (UOW) we want you to succeed. We are committed to providing you with the connections you need to achieve the future you want, whether that's an accredited qualification, employment experience, global perspectives or access to world-class research.

Our graduates are well respected in the workforce, with UOW being ranked among the top 100 universities in the world by employers.

We believe in interdisciplinary learning and research that equips students with broad-minded thinking, adaptable skills and hands-on experience that empower you to be world-class in your chosen career.

Research at UOW is internationally regarded, with competitive research funding and cutting-edge facilities. Our research has placed us in the top 2% of universities worldwide for research quality.

With connections to over 200 universities in 35 countries, UOW is truly an international university. We have students from over 70 nationalities, and have nurtured a welcoming multi-ethnic community that helps students from all backgrounds settle into the Australian lifestyle and strengthen their university experience.

This Guide is designed as a starting point. I encourage you to find out what we have to offer by talking to our staff, our students, or one of our 120,000 alumni. Ask them why UOW would be right for you.

**PROFESSOR JOE F CHICHARO**  
**Deputy Vice-Chancellor (Global Strategy)**





An aerial photograph of Wollongong, Australia, showing a dense urban area with a mix of residential and commercial buildings. The city is situated along a coastline with a sandy beach and turquoise water. In the background, there are rolling green hills under a blue sky with scattered clouds. A large green square is visible on the left side of the image, partially overlapping the text.

# OUR HOME: WOLLONGONG





**17**  
PATROLLED  
BEACHES

**FREE**  
WOLLONGONG  
SHUTTLE BUS



**\$3**



AMIGOS  
TACO  
TUESDAY



**19,125**  
JUMPS PER YEAR BY  
**SKYDIVE**  
THE BEACH

**15+**

NATURE WALKS  
IN THE  
WOLLONGONG  
REGION



↓ ↑  
**28**

TRAINS TO  
**SYDNEY**  
EVERY DAY  
- BOTH WAYS -

**\$4**

UNIMOVIES  
ON THE  
**BIGGEST SCREEN**  
IN THE  
ILLAWARRA



**90** MIN TO  
SYDNEY  
CBD



**292,500**  
ILLAWARRA AREA  
POPULATION



**19**

HOME  
GAMES  
TO SEE THE  
DRAGONS &  
THE HAWKS



**5** MIN



FROM CAMPUS TO  
WOLLONGONG  
CITY CENTRE





# WELCOME TO WOLLONGONG

Wollongong is Australia's ninth largest city, and is located on the coast of the Pacific Ocean. People come from all over the world to live, work and study here. It's a vibrant and welcoming community where you can achieve your best.

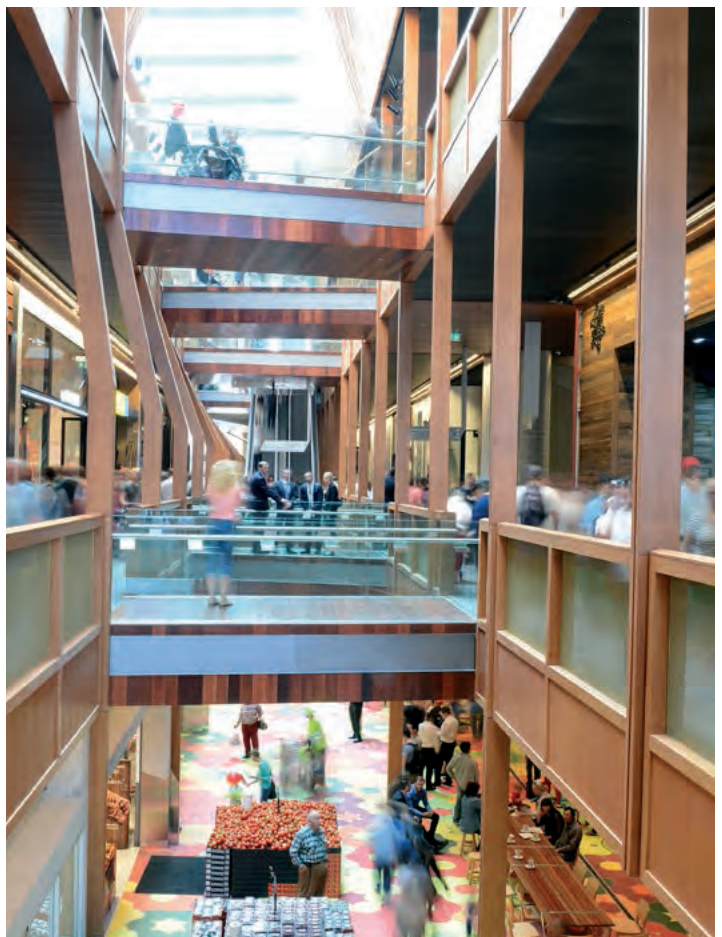
Historically, Wollongong's economy was centred around industry, and it continues to employ a large number of skilled graduates from UOW. Another effect of this industrial past is Wollongong's cultural diversity.

The pristine environment and availability of work attracted migrant workers from all over the world to make their homes in Wollongong. When UOW started enrolling a diverse mix of international students in the 1980s, Wollongong was already a home to many languages, cuisines, religions and customs.

Today, Wollongong has a rich cultural calendar and attracts people from all over Australia and the world with a healthy, active lifestyle. Here you can live stress-free and focus on your studies.



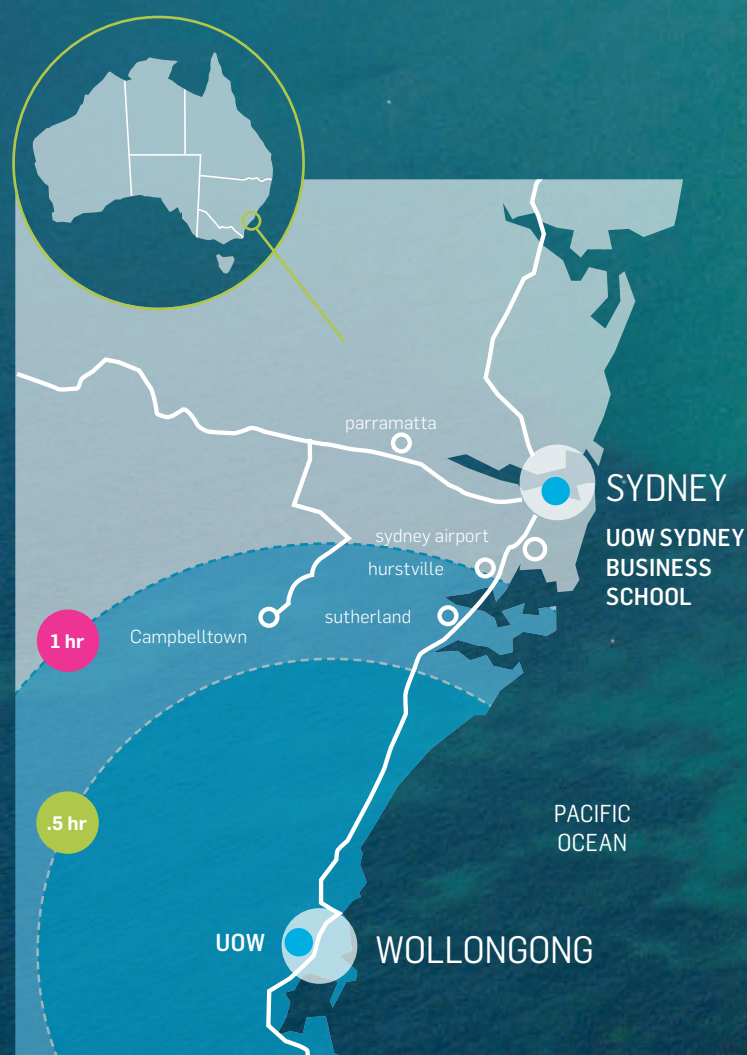






# LOCATION AND TRANSPORT

Once you're here, getting around the city is safe, easy and cheap. Wollongong is close to Sydney—90min by road or train.



## DISTANCE TO WOLLONGONG FROM

## TRAIN FARE

SYDNEY (CENTRAL)	90 MIN	ONE WAY	\$8.30
		RETURN	\$15.00
HURSTVILLE	70 MIN	ONE WAY	\$8.30
		RETURN	\$15.00
SUTHERLAND	55 MIN	ONE WAY	\$6.50
		RETURN	\$13.00

## THE OPAL CARD

Sydney transport (including all the trains servicing Wollongong) uses the Opal Card system, a pay-as-you-go ticketing system that works across all Sydney trains, buses and ferries. See [opal.com.au](http://opal.com.au) for current information.



## CAPPED PRICE FOR ALL TRAINS AND BUSES

Using a rechargeable **Opal Card** to pay for train and bus fares means your fares are capped\*. Travel as much as you want on all Opal-enabled trains, ferries, buses and light rail and never pay more than:

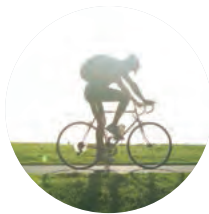
**\$15** a day / **\$60** a week

0 60km Distance: 5cm = 60km

Approximate travel time

\* Prices above were correct in Feb 2015 and are subject to change. Some exceptions apply, see [opal.com.au](http://opal.com.au)





## BICYCLE

UOW has over 800 bike racks for secure and convenient bike parking. There are always second-hand bikes for sale around campus.



## CAR

UOW runs a carpooling program, so if you have two or more friends in your car, you get free parking on-campus.



## WALK

Most destinations in Wollongong are an easy walk away.



## BUS

Wollongong is well connected with city buses going to all its suburbs.



## TRAIN

North Wollongong station is a 15-minute walk or a short free shuttle bus ride from our main campus.



## FREE WOLLONGONG SHUTTLES

FREE 'city loop' shuttles run all day and into the night, linking UOW with the city centre, trains and shopping district.

### WOLLONGONG BUS ROUTES





A photograph of a man and a woman looking at a document together outdoors. The man, on the right, has grey hair, a beard, and glasses, and is wearing a light blue button-down shirt. The woman, on the left, has blonde hair and is wearing a patterned top. They are both smiling and looking down at a document on a table. The background is a blurred outdoor setting with green foliage and trees. A solid blue rectangle is positioned on the left side of the image, partially overlapping the text.

# STUDENT LIFE AT UOW: A COMPLETE EDUCATION





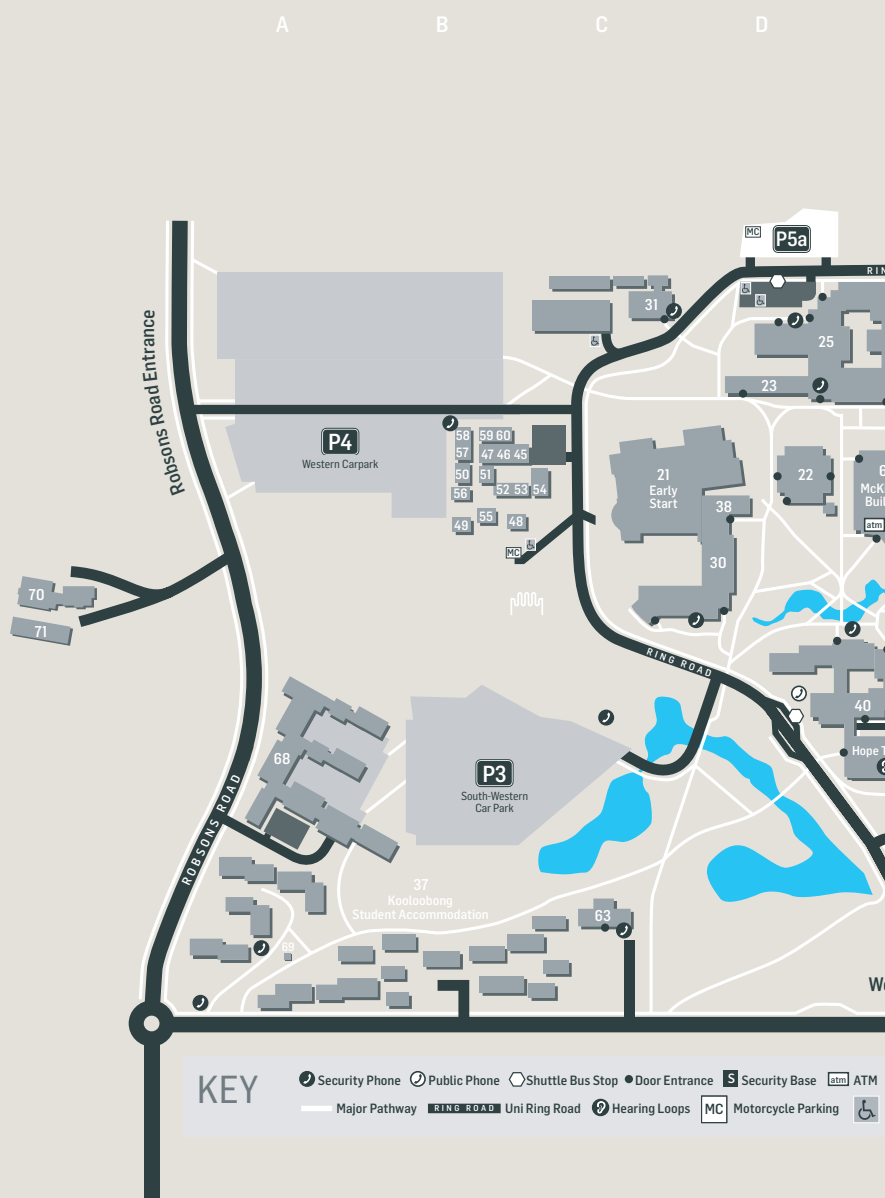


# EVERYTHING YOU NEED CAMPUS LIFE

Our Wollongong campus combines modern teaching and study spaces on 83 hectares of landscaped Australian bushland. We have created a campus that includes academic support, accommodation, sports, culture and entertainment—everything you need. At UOW Wollongong you can relax and focus on your education.



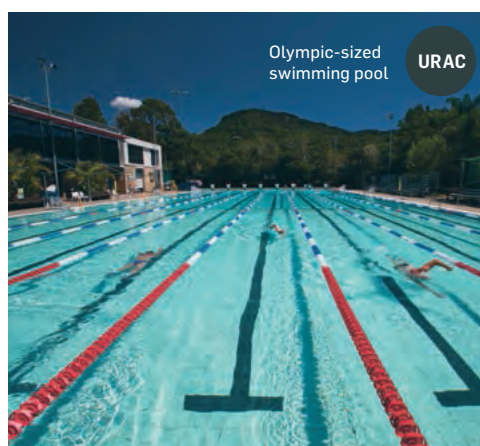
40 Hope Theatre



16 UOW Library



RUSH2 CAFE 7 cafes on campus



Olympic-sized swimming pool URAC



11 Over 15 food outlets on campus





DUCKPOND LAWN



18 FOOD OUTLETS  
ON CAMPUS



53 KILOGRAMS OF  
COFFEE BEANS  
SOLD ON CAMPUS  
EVERY SINGLE DAY



TRAVEL AGENT



MEDICAL CENTRE



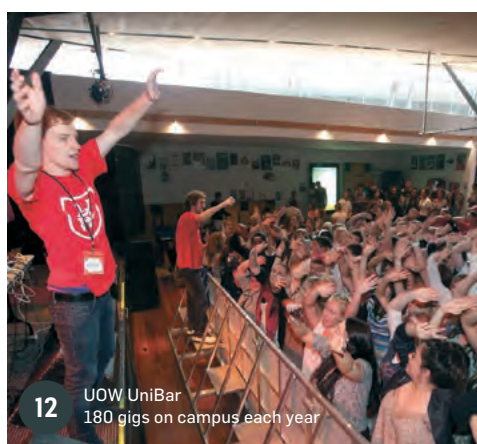
POST OFFICE



2 BANKS



**URAC** Gym, sports halls and  
group fitness classes



**12** UOW UniBar  
180 gigs on campus each year



Over 100 UOW  
sporting teams

**OV  
AL  
NO.2**



# SYDNEY CAMPUS

[business.uow.edu.au/sydney-bschool](https://business.uow.edu.au/sydney-bschool)

The Sydney Business School Sydney Campus offers state-of-the-art facilities in a unique learning environment, located in the heart of Sydney's central business district, overlooking Sydney Harbour. The Sydney campus provides tailored learning and teaching facilities, together with full administrative support and online links to the main campus, including all electronic catalogues and databases from the main library.

The Sydney Business School delivers the following programs at the Sydney Campus, in addition to Wollongong:

## MASTERS DEGREES

- Master of Applied Finance
- Master of Business
- Master of Business Administration (MBA)
- Master of Business Administration Advanced
- Master of International Business
- Master of Professional Accounting
- Master of Professional Accounting Advanced\*
- Master of Science (Logistics and Project Management)

## GRADUATE CERTIFICATES

- Graduate Certificate in Applied Finance\*
- Graduate Certificate in Business
- Graduate Certificate in Professional Accounting\*

## HIGHER DEGREE RESEARCH

- Doctor of Philosophy
- Doctor of Philosophy Integrated
- Master of Philosophy

See page 42 for more information on the courses offered at Sydney Business School



\*Subject to final approval







# INNOVATION CAMPUS

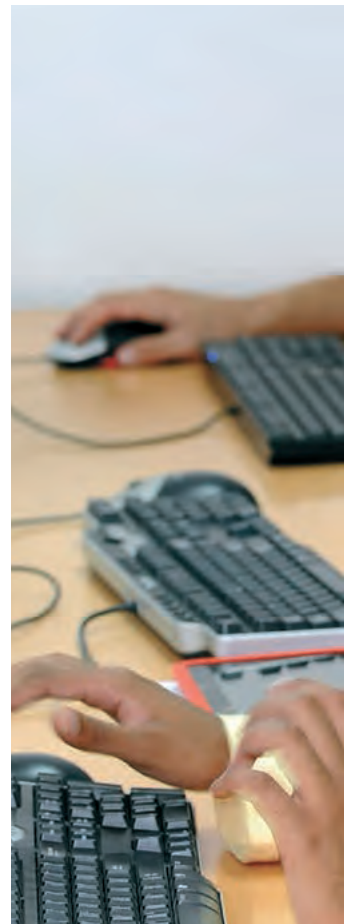
[innovationcampus.com.au](http://innovationcampus.com.au)

The Wollongong Innovation Campus (iC) is a research, business and technology facility that secures Wollongong's future as a site for world-class collaborations. The campus is located in North Wollongong, only five minutes from both the UOW Wollongong campus and the main city area, and is serviced by free public transport.

A number of UOW's internationally-recognised research centres are based at the Innovation Campus, working in fields ranging from innovative materials to sustainable building design, efficient energy storage, digital media, business leadership, public health initiatives and international maritime law.

iC also has strengths in many industry sectors, including the emerging sectors of ICT, Sustainability, Future Materials, Nanotechnologies, Superconducting and Health & Pharmaceuticals.

All of the UOW Sydney Business School's research degrees are offered at iC.







## UOW IN DUBAI

[uowdubai.ac.ae](http://uowdubai.ac.ae)

The University of Wollongong in Dubai (UOWD) is one of the United Arab Emirates' (UAE) oldest and most prestigious universities, with a proud Australian heritage. UOWD is located in Knowledge Village, an educational precinct a short distance from the heart of Dubai city.

At UOWD, you will receive a Western education and benefit from the considerable resources and trusted name of the University of Wollongong. Today, as an independent UAE institution of higher education, UOWD attracts students from around the world. Over 4,000 students, comprising more than 90 nationalities, enjoy the quality academic experience that is UOWD.



# AN INTERNATIONALLY LINKED UNIVERSITY

UOW connects people who seek new ideas and want to improve the world around them. In Australia, UOW Wollongong brings together over 24,500 students and staff from over 140 nations. We have links with over 200 universities in 35 countries, and around the world 7,000 students are earning UOW degrees in Malaysia, Singapore, Hong Kong and the United Arab Emirates.

## **iCONNECT**

[uow.edu.au/student/iconnect](http://uow.edu.au/student/iconnect)

iConnect encourages all on-shore international students to engage in multicultural experiences with the aim of increasing cultural literacy and greater awareness of global issues.

## **STUDENT EXCHANGE**

[uow.edu.au/student/exchange](http://uow.edu.au/student/exchange)

Our International Exchange Program gives you the chance to study for a semester or a year at some of the finest institutions in the world and count the studies towards your UOW degree.

Exchange can add a further edge to your employment prospects after graduation, as employers value the skills acquired through global experience. At UOW you can choose from over 200 exchange universities in more than 35 countries.

## **UOW IN DUBAI**

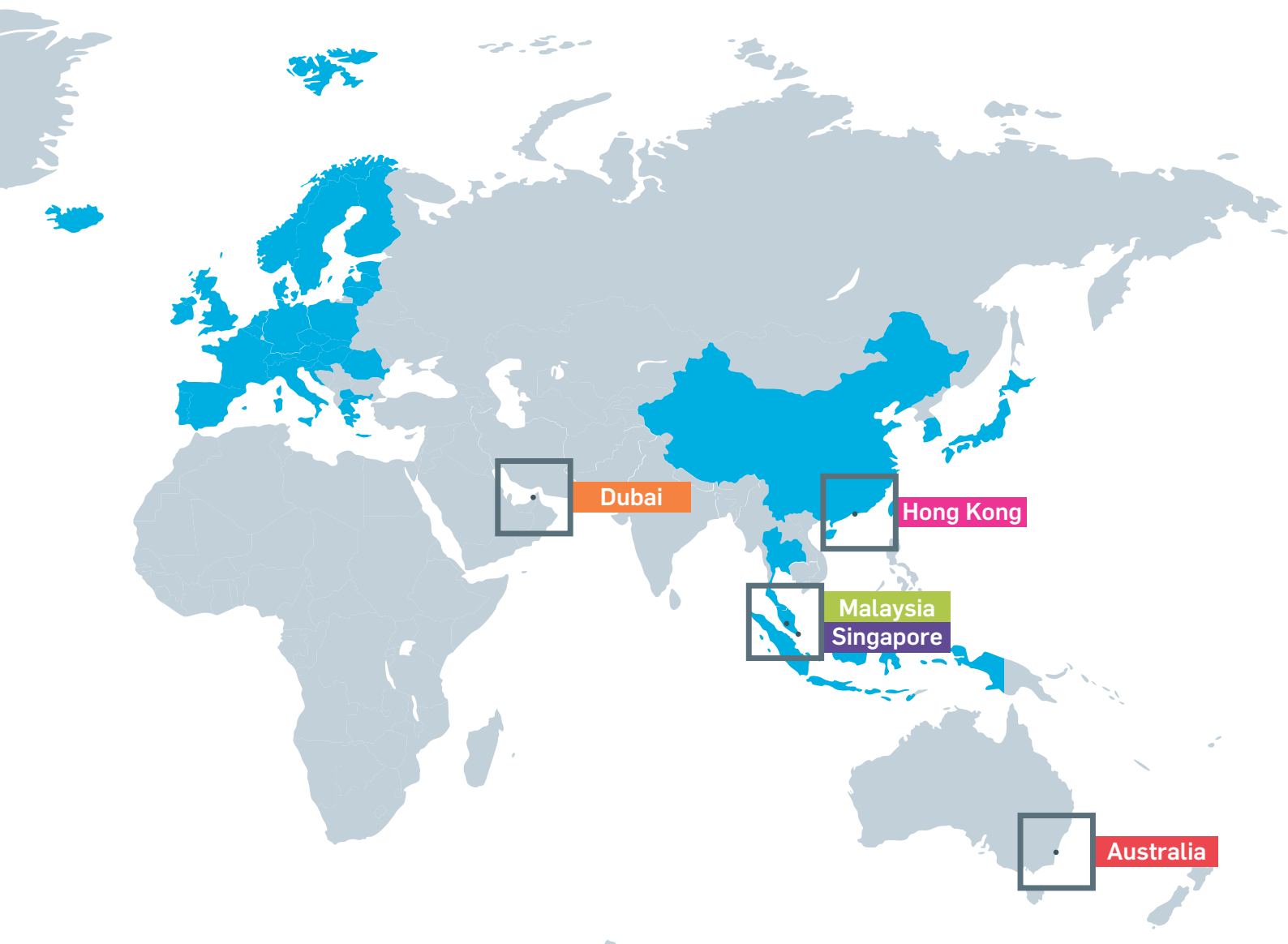
[uowdubai.ac.ae](http://uowdubai.ac.ae)

The University of Wollongong in Dubai (UOWD) is one of the United Arab Emirates' (UAE) oldest and most prestigious universities. Over 4,000 students come from over 90 countries for a UOW quality education in Dubai's Knowledge Village.

UOWD is an independent UAE institution of higher education offering a range of undergraduate and postgraduate degrees accredited by the UAE Ministry of Higher Education and Scientific Research.







UOW IS LINKED WITH OVER  
200 UNIVERSITIES IN 35  
COUNTRIES



UOW DEGREES ARE OFFERED AT:

UOW Australia  
PSB Singapore

UOW Dubai  
INTI Malaysia

SIM Singapore  
IRI Hong Kong



UOW HAS EXCHANGE LINKS  
WITH 35 COUNTRIES



# CAREERS, EMPLOYMENT AND INTERNSHIPS



## TOP 100 IN THE WORLD FOR GLOBAL GRADUATES

For the eighth year UOW is ranked in the top 100 universities in the world in the QS World University Rankings Graduate Employers survey. This review rates institutions based on employers' opinions of their graduates - QS World University Rankings 2014/2015



## WORK-INTEGRATED LEARNING

At UOW you can graduate with real workplace experience and the skills employers want.

At UOW we measure success in many ways—including the satisfaction and success of our students. Before you start with us, our admissions team will guide you to choose the right degree. While you're here, our student support programs will make sure your academic performance is the best it can be. And when you leave us, you'll be ready to start the career you want with the help of our professional careers service.

### LEARN ON THE JOB

At UOW, we've integrated practical lessons or contemporary case studies into many of our degrees. You'll get to put your classroom knowledge to the test—and then learn from your experiences with the support of your UOW teachers.

### GLOBAL WORKPLACE PRACTICE (GWP800)

[uow.edu.au/careers/wlp/gwp800](http://uow.edu.au/careers/wlp/gwp800)

### MASTERS AND PHD INTEGRATED STUDENTS (WOLLONGONG CAMPUS)

Global Workplace Practice (GWP800) is available to students completing a minimum two-year postgraduate study program at UOW and is designed to meet the employment aspirations of international students to work in Australia.

- Identify requirements of employers to improve prospects of successful recruitment.
- Use career management tools.
- Develop business communication skills needed to work in a team environment.
- Apply intercultural skills required to operate in the Australian workplace.
- Apply discipline-specific knowledge in a practical workplace setting via work placement or industry based project.

Students in a 12 or 16-subject Masters in the Faculty of Business may alternatively apply to take Global Workplace Practice GWP900.

### GLOBAL WORKPLACE PRACTICE (GWP100)

[uow.edu.au/careers/wlp/CGWP](http://uow.edu.au/careers/wlp/CGWP)

### DOCTORATE STUDENTS (WOLLONGONG CAMPUS)

GWP100 (HDR) is a subject (with no credit points attached) designed to provide Higher Degree Research students with tailored career management and job seeking strategies.

It will cover career pathways for Doctorate students both in academic and business contexts, and will also help you understand the Australian labour market, recruitment processes and cultural expectations in the workplace. The subject does not contain a work placement component.





“ Completing ENGG924 was a worthwhile experience for me. My internship with Bureau Veritas - a French-based company that tests, inspects and certifies mechanical components - gave me practical industry experience through the tasks I completed. It was very practical and interactive, which was a great change from the theoretical side of the course. The job interview assessment was the most helpful part of the subject, giving me the opportunity to understand how job interviews are done in Australia. It gave me the confidence to attend my internship interview with ease.

**CHITRA BOOSARPU SRINIVASAN / INDIA**

Master of Engineering  
ENGG942 – Internship with Bureau Veritas

## SYDNEY CAMPUS STUDENTS

GWP100 (Sydney Business School) is a subject offered every trimester at the Sydney campus, and aims to equip students with essential job search skills and career management strategies to succeed in Australian and international workplaces.

Find out how to search and apply for jobs within your discipline, write a great resume and learn the best strategies to impress your potential employer in an interview. After successfully completing GWP100, you'll have a better understanding of Australian workplace culture and how to look for work and be successful in your workplace. The subject does not offer a work placement component.

## GLOBAL WORKPLACE PRACTICE (GWP900)

[uow.edu.au/careers/wlp/gwp900](http://uow.edu.au/careers/wlp/gwp900)

Global Workplace Practice (GWP 900) is a subject designed to assist Sydney Business School students access the Australian workforce through work experience or an industry-based project, enabling the application of discipline-specific knowledge to practical workplace settings. For more information see page 47.

## PROFESSIONAL PRACTICE SUBJECT (ENGG942)

Professional Practice is designed to provide students with skills and knowledge to prepare them for the Australian engineering workplace. For more information see page 55.

## VOLUNTEERING

Volunteering for a not-for-profit business or charity is an excellent way to improve skills (and make friends!) while learning about Australian culture and the Wollongong community. Volunteering is a great way to show employers you're well-rounded and not afraid of a challenge.

There are many opportunities for volunteering at UOW, including:

### UOWX

[uow.edu.au/student/life/uowx](http://uow.edu.au/student/life/uowx)

UOWx is about exploring new ideas; gaining experience; expanding your skills; and extending yourself outside of your coursework. UOWx provides opportunities to participate in a range of programs - from community volunteering to mentoring others to achieve their best.

### UNICREW

[unicentre.uow.edu.au/unilife/unicrew](http://unicentre.uow.edu.au/unilife/unicrew)

Help run UOW student events all over campus, organise fun activities every week and support the bands that play at UOW. Organised through the Centre for Student Engagement (CSE), UniCrew are there to help make your time at UOW the best time of your life.



## EMPLOYMENT SKILLS TRAINING

UOW Careers will teach you how to apply for work in Australia.

### CAREERS COUNSELLING

[uow.edu.au/careers/info/counselling](http://uow.edu.au/careers/info/counselling)

This free service is available to all UOW students. You will meet one-on-one with a qualified careers counsellor and discuss your career thinking, and what you might do during and after your studies.

Often the discussion will focus around a career direction, and the things you can do to increase your employability, including appropriate UOW Careers programs.

### SPECIALISTS IN YOUR AREA

UOW employs career consultants in every faculty. These consultants give you personal careers guidance tailored to your area of specialisation, and help build relationships with potential internship providers in the business world. They also arrange guest lectures from industry experts who can give you insights into a sector, or help you start building a professional network.

### CAREERS CENTRAL WORKSHOPS

[uow.edu.au/careers/help/workshops](http://uow.edu.au/careers/help/workshops)

Careers Central offers a variety of short programs to help you prepare yourself for the challenges in obtaining a graduate position at the end of your degree. These one-hour seminars and workshops help you refine specific employment skills.

Workshops have included:

- Resume Writing 101
- Where are the Jobs? The Hidden Job Market
- From Interview to Offer: Learn the Secrets of Successful Interviewing
- The Ins and Outs of Graduate Programs & Summer Internships
- An Insider's Guide into Assessment Centres
- The 'How to' Guide on Answering Selection Criteria
- Are you LinkedIn?



#### GLOBALLY RATED A FIVE-STAR UNIVERSITY

- 5 Star rating – QS World University Rankings 2014
- 5 Star rating in the 2015 Good Universities Guide for Student Retention and Getting a Full-Time Job

## JOBSEEKER RESOURCES

If you're planning to find work in Australia, UOW Careers Central will show you where to look.

### CAREERHUB

An international student visa allows you to work 40 hours per fortnight (2 weeks) during university session and full-time during session breaks. UOW Careerhub is an online tool that will help you find and apply for jobs during your time here (and after you graduate!).

- Search for jobs, including: graduate, vacation, part-time and casual, and work experience opportunities
- Register for workshops, employer presentations, career readiness conferences and exhibitions
- Book an appointment with a careers consultant or career counsellor
- Access careers resources such as fact sheets, links, news and FAQs
- Create your resume and e-portfolio

### CAREERS EXPOS

[uow.edu.au/careers/help/fairs](http://uow.edu.au/careers/help/fairs)

Each year there are opportunities to meet employers on campus.

Some employers are invited to UOW to hold information sessions, while others participate in the UOW Careers Expos. UOW runs several expos every year: some are general events for many different industries, and some are specific, such as the Nursing Careers Expo.

### THE EDGE

[uow.edu.au/careers/help/TheEdge](http://uow.edu.au/careers/help/TheEdge)

An annual publication that deals with all aspects of finding work (paid and unpaid) including writing job applications and attending job interviews. Find resources including:

- Sample application cover letters
- Interview preparation checklists
- Resume writing guides

### FOCUS 2

[uow.edu.au/careers/focus2](http://uow.edu.au/careers/focus2)

Focus 2 is an online self-assessment tool that will help you explore your career options. It covers key career development areas:

- Career Readiness
- Career Exploration
- Career Action Planner
- Career Planning and Decision Making

### JOBS ON CAMPUS

[uow.edu.au/careers/help/TalentPool](http://uow.edu.au/careers/help/TalentPool)

Jobs on Campus offer casual jobs across UOW, connecting students with employers who are looking to hire staff.





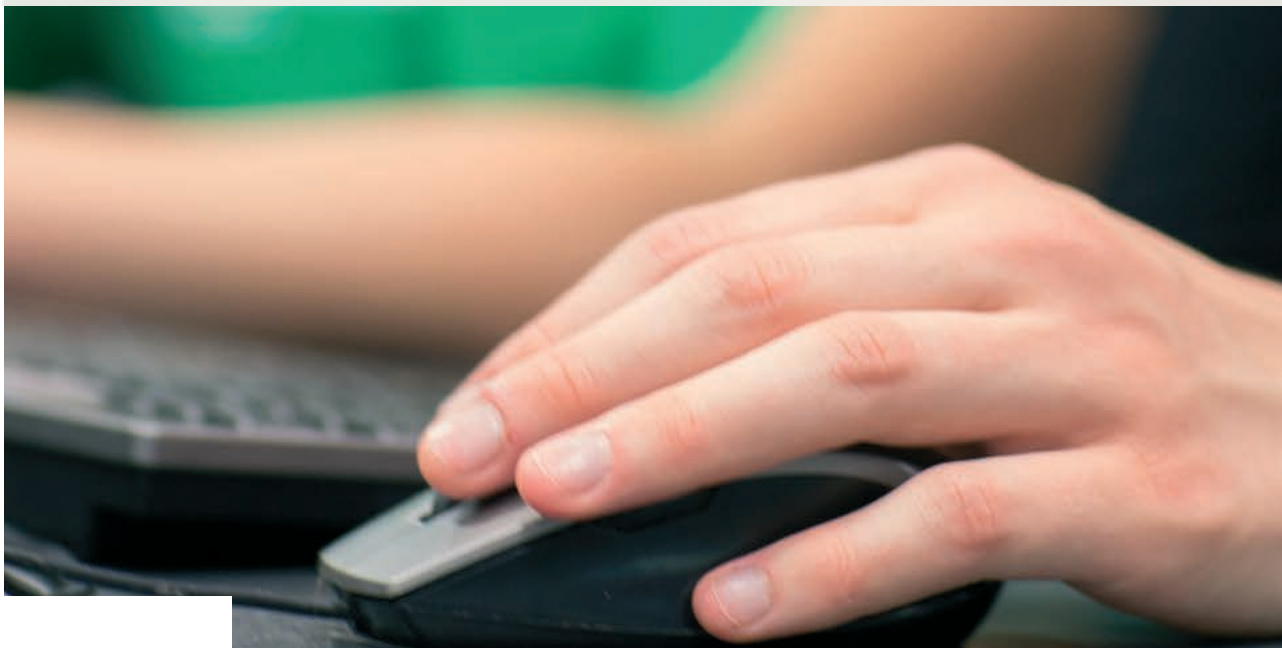
*My favourite part of studying at UOW is that I have the time to develop my skills outside the classroom without it interfering with studies. I've been able to complete a number of free workshops to help me improve my resume writing, interviewing and networking skills. I've also had the opportunity to complete work experience with the Humanitarian Settlement Services during my time here. Working there helped me to improve my language and time management skills, and has given me a better understanding of the local community. Having developed these skills will really help me with my career in the future, and I wouldn't have been able to do this without coming to UOW.*

---

**AMMAR MANAA / SAUDI ARABIA**

PhD (Earth & Environmental Science)

Graduate Certificate in Innovation and Entrepreneurship





# SERVICES AND SUPPORT

As a UOW student you'll have the academic and personal support you need to succeed. Our size means that we are a truly student-centred campus with individual attention, available staff, dedicated research supervisors and a personal approach. From the day you become a UOW student, you can expect guidance and support.

## ACADEMIC SUPPORT

### ACADEMIC ADVISERS AND POSTGRADUATE COORDINATORS

Each faculty has advisers and coordinators to assist you with questions about your subjects or course. You can also consult your tutor, lecturer, or the Course Coordinator.

### IT SERVICES ON CAMPUS

Students at UOW Wollongong campus can access campus-wide wireless internet, and freely use large computer labs. Many private and collaborative study spaces across campus have network facilities for student computers.

### LEARNING DEVELOPMENT CENTRE

[uow.edu.au/student/services/ld/students](http://uow.edu.au/student/services/ld/students)

This free service is for students who wish to improve their academic and English language skills by accessing workshops, individual consultations or self-directed resources.

### LIBRARY

[www.library.uow.edu.au](http://www.library.uow.edu.au)

Our award-winning library and dedicated library staff are here to support you during your study at UOW. You'll have access to print and digital collections containing over a million volumes, and dozens of learning spaces—from quiet study spaces to group seminar rooms.

### PROFESSIONAL TRAINING FOR PHD STUDENTS

[uow.edu.au/uow008944](http://uow.edu.au/uow008944)

A range of training is available, including professional development courses, a Graduate Certificate program in tertiary teaching, HDR writing courses, seminars and workshops.

### RESEARCH STUDENT CENTRE

Manages postgraduate research enrolments, scholarships and funding, as well as orientation, workshops and information sessions for research students.

### STATISTICAL CONSULTING SERVICE

This free service provides advice on investigation planning, data analysis and appropriate methods of presenting results and conclusions.

### STUDENT CENTRAL

[uow.edu.au/student/central](http://uow.edu.au/student/central)

A one-stop-shop for all assistance for enrolled students, including enrolment matters, official documents (including transcripts), exams and results, and student fee matters.

### STUDENT COMPUTER RESOURCE CENTRE

[uow.edu.au/its/studentlabs](http://uow.edu.au/its/studentlabs)

Information Management & Technology Services (IMTS) provides training, user guides and student computer resources, including nine central student computer laboratories equipped with 500 desktop computers, as well as teaching laboratories and two Computer Science laboratories.



“UOW feels like a home away from home. Everyone on campus is so friendly and helpful. It made my transition to studying in a different country much easier. Studying at UOW means studying at a world-class university. The facilities are fantastic, and the support services have helped me very much. I earned myself a job at the University, and I've got Careers Central to thank for it after they helped me develop my CV and cover letter. Studying at Wollongong has been a life changing experience for me. I've become more independent, confident and knowledgeable, and I feel ready to take the next step in my career.

**NIRMALA SHARMA / NEPAL**  
Master of Health Leadership Management

## PERSONAL SERVICES

### CHILDCARE SERVICES

UOW offers on-campus childcare services for children aged 0–6 years, as well as before and after-school care for children. Applications for childcare must be made prior to your arrival in Wollongong, as there are long waiting lists for placements.

### HEALTH, MEDICAL AND COUNSELLING

A range of health services are located on campus, including a doctor, optometrist and dentist. UOW also offers a free, confidential counselling service to all students.

### RELIGIOUS SERVICES

There are a range of religious services on and off campus, including a Muslim prayer space, the Omar Mosque near the University, the Nan Tien Buddhist Temple in nearby Berkeley and the Sri Venkateswara Hindu Temple. Student-based religious clubs include the Buddhist Society; Chinese Christian Fellowship; Evangelical Christian Union; and the Muslim Students' Association.

### STUDENT SUPPORT ADVISERS

These advisers provide support and referral services to UOW students. They also provide programs supporting student equity and diversity both within faculties and across campus. They assist students with a range of issues such as orientation to the local area, study difficulties, academic concerns, budgeting, homesickness, legal issues and accidents, student visas, health and personal problems, family emergencies and children's education. The service is free and confidential.

### STUDENT OMBUDSMAN

Oversees the welfare of all students and advocates on their behalf including problems with admission, enrolment, assessment, progression and transferring courses.

### THE SAFEZONE

All students can download SafeZone, the free smartphone app that makes it easy to ask for assistance from UOW Security Services with the press of a single button.

### UOW SECURITY SERVICE

The Security Service helps provide a safe and secure campus environment with trained and licensed security officers providing emergency response, first aid, after-dark escorts and patrols, operating 24 hours a day, 7 days a week.

### UOW WELLBEING

[uow.edu.au/student/wellbeing](http://uow.edu.au/student/wellbeing)

UOW Wellbeing is here to help you maintain a healthy, happy life balance and keep on track.

### WOLLONGONG UNIVERSITY POSTGRADUATE ASSOCIATION (WUPA)

Offers facilities and services such as the Postgraduate Resource Centre, which contains study facilities for postgraduate students. It also provides an advocacy and outreach service to assist you during your studies, plus a range of social activities and events.



# UOW LIVING

At UOW Living you will benefit from a multicultural community that provides a high level of support. Students will have access to a range of facilities and activities designed to enhance their university experience.

You have the choice of catered, flexi-catered or self-catered styles, all in community-based environments.

Our residences are conveniently located either on campus, within walking distance from campus, or a short trip by the free shuttle bus.



## UOW ACCOMMODATION GUARANTEE

UOW is offering a guaranteed place in UOW accommodation to incoming full-time students. Conditions apply—for details, see [uow.edu.au/accommodation](http://uow.edu.au/accommodation)

## MEAL OPTIONS

**Fully catered:** Fully catered residences provide 19 meals a week through the residence dining room as part of your fees.

**Flexi-catered:** These residences offer meals through their dining rooms, but you only pay for what you eat. 19 meals a week will cost approximately \$75.

**Self-catered:** All self catered rooms and units have access to shared cooking facilities.

## PRIVATE ACCOMMODATION

UOW's Accommodation Services provides comprehensive information about private and shared accommodation on its website at [uow.edu.au/accommodation](http://uow.edu.au/accommodation)

This website also contains information on temporary places to live while looking for a permanent residence.

## APPLYING FOR UOW ACCOMMODATION

Applications for university residences are made online at [apply-accom.uow.edu.au](http://apply-accom.uow.edu.au)

To secure a place in the residences, applications should be made as early as possible. A free airport pick-up service from Sydney International Airport (60 minutes away) is provided for all commencing students.

The figures above do not include compulsory UOW accommodation fees of approximately \$10 – \$15 per week (which cover things like community activity, services and infrastructure, insurance). For a full schedule of fees see [uow.edu.au/accommodation](http://uow.edu.au/accommodation)

## HOMESTAY

For those who prefer a family-oriented lifestyle, Homestays (living with a local family in a private home) are available. For more information see [uowcollege.edu.au/future-students/international/homestay](http://uowcollege.edu.au/future-students/international/homestay)



## NEW RESIDENCES ON THE WAY

With demand for accommodation on the rise, UOW is investing in two new on-campus residences, taking our vibrant UOW living community to more than 2,500.

## GUNDI

Located close to Wollongong's beautiful North Beach, Gundi is a small, quiet community of postgraduate students.



Self-catered rooms / 34 residents

Single rooms

From \$194 per week

150m to bus stop (FREE shuttle)

1.5km to train station

## THE MANOR

The Manor brings together a small number of research students into a focused study environment.



Self-catered rooms / 9 residents

Single rooms

From \$225 per week

200m to bus stop (FREE shuttle)

200m to train station

## GRADUATE HOUSE

Located on-campus, Graduate House offers a mix of apartment types suitable for families, couples and single students. This residence is for postgraduate students only.



Self-catered rooms / 78 units

Single rooms to 3 bedroom units

From \$216 per week

Located on UOW campus (100m to FREE shuttle)

1.2km to train station

## WEERONA

Weerona College is located next door to Beaton Park, a large sporting complex with an indoor pool, gymnasium, tennis courts and running track.



Fully catered (19 meals a week) / 204 residents

35 twin share rooms and 134 single rooms

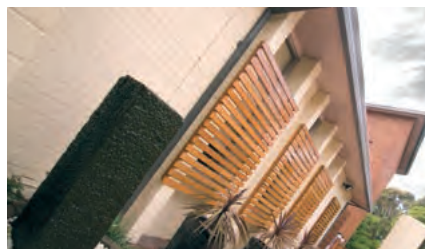
From \$268 per week

100m to bus stop (FREE shuttle)

1km to train station

## INTERNATIONAL HOUSE

International House is an affiliate of the 16 International Houses Worldwide. It proudly boasts a community representing over 30 nations, living and learning peacefully under the one roof.



Fully catered (19 meals a week) / 222 residents

16 twin share rooms and 190 single rooms

From \$268 per week

200m to bus stop (FREE shuttle)

200m to train station

## CAMPUS EAST

A five-minute walk to the beach and 10 minute bus ride from main campus. Located in the beachside suburb of Fairy Meadow, this residence is spread across large grounds including a number of playing fields.



Designated postgraduate rooms / 616 residents

Shared units range from two to five bedrooms with shared bathrooms

From \$209 (self-catered) / From \$243 (flexi-catered)

300m to bus stop (FREE shuttle)

400m to train station

## KOOLOOBONG VILLAGE

Located right on-campus at UOW Wollongong, living at Kooloobong Village means being minutes from classes and all of UOW's leisure facilities.



Designated postgraduate units / 552 residents

Mix of single studios and units with 5 or 4 bedrooms and shared bathrooms

From \$189 per week

Located on UOW campus (100m to FREE shuttle)

1.2km to train station

## MARKETVIEW

Marketview is in the heart of Wollongong, next to the city's largest shopping mall, cultural attractions and dozens of restaurants and cafes.



Self-catered rooms / 144 residents

Single rooms, private ensuite and flat screen TV

From \$248 per week

150m to bus stop (FREE shuttle)

900m to train station

## KEIRAVIEW

Keiraview is located on the fringe of Wollongong CBD and is walking distance to shops, the beach and some of the best cafes and restaurants in Wollongong.



Self-catered rooms / 46 residents

Single rooms with private ensuite and TV

From \$234 per week

150m to bus stop (FREE shuttle)

800m to train station



# COST OF LIVING

Wollongong enjoys a very reasonable cost of living, which means you can focus your efforts on your study, not your finances.

Cost of living in Wollongong is lower than in many other cities in Australia. Here we've compared weekly rental affordability across several cities based on government data. Costs show median rental figures for a three-bedroom house:

<b>SYDNEY - CITY</b>	<b>\$900*</b>
<b>SYDNEY - HURSTVILLE</b>	<b>\$540*</b>
<b>MELBOURNE - INNER CITY</b>	<b>\$695†</b>
<b>WOLLONGONG</b>	<b>\$460*</b>

Source: \* Department of Housing Rent and Sales Report (September 2014); † Department of Human Services Rental Report VIC - Moving annual rents by suburb (June 2014)

## SAMPLE MONTHLY LIVING COSTS IN WOLLONGONG

Below is a sample of some typical student monthly rent and personal expenses showing a range of different living arrangements.

ACCOMMODATION TYPE	Rent	Food prepared at home and other groceries	Bills, e.g. electricity	Local travel costs	Personal purchases, e.g. clothing	Personal phone / internet	Entertainment	Food and drinks purchased on campus	Text books	Total cost \$A per month
Average cost of living in Wollongong per month – 2015										
2 bedroom apartment (own room). Central Wollongong & UOW area	672	250	120	0	↓	↓	↓	↓	↓	\$1477
2 bedroom apartment (shared room). Central Wollongong & UOW area	340	250	60	0	↓	↓	↓	↓	↓	\$1085
4 bedroom shared house (own room). Central Wollongong & UOW area	560	250	60	0	↓	↓	↓	↓	↓	\$1305
4 bedroom shared house (shared room). Central Wollongong & UOW area	262	250	60	0	↑	↑	↑	↑	↑	\$1007
Homestay. Outside Central Wollongong & UOW area	1,000	0	0	124	↑	↑	↑	↑	↑	\$1559
University accommodation (Campus East) including 19 meals per week	1,272	0	0	0	↑	↑	↑	↑	↑	\$1707



OFF-CAMPUS



RICE 1kg \$2



12 FREE RANGE  
EGGS  
\$3.50



LOAF OF BREAD  
\$3



1L OF MILK  
\$2



INSTANT  
NOODLES 50c

ON-CAMPUS



BOTTLE  
OF COLA  
\$3.50



STIR-FRY  
CHICKEN AND  
VEGETABLES  
\$8.50



CUP OF  
COFFEE  
\$3.50



UNIMOVIE  
TICKET \$4



GYM  
\$8/WEEK



6-INCH  
SALAD  
SANDWICH  
\$3.50





# STUDY OPTIONS

# HOW TO USE THIS GUIDE

## TO FIND YOUR DEGREE

The index starting on page 42 lists all our degrees. The large headings indicate broad fields of interest e.g. Business or Engineering etc. Under each of these headings you will find smaller headings indicating a more specific area within that field e.g. Finance or Mechatronics.

## THE DEGREE LISTINGS

This guide gives you a summary of the important degree information. See below for an explanation of how we have presented this information.

**Degree Name** ..... Master of Business Administration Advanced

**Detailed information about this degree.** ..... [go.uow.edu.au/mba-adv](http://go.uow.edu.au/mba-adv)

**The normal minimum full-time duration of this degree.** ..... **DURATION** 2 years (96 cp)

**The campus where the course is offered and delivered** ..... **STARTS** Trimesters 1 (February) and 3 (August)

**English language requirement for IELTS. Equivalent scores for TOEFL and Pearson PTE can be found on page 76.** ..... **LOCATION** Wollongong and Sydney

**ENTRY REQUIREMENTS** ..... Recognised Bachelor degree with an equivalent average mark of 50%, plus a minimum of three years' relevant full-time professional or managerial experience and a one-page Statement of Motivation<sup>1</sup>. Other tertiary qualifications combined with extensive professional work experience will be considered.<sup>1</sup>

**IELTS** ..... Overall 6.5 (R:6, W:6, L:6, S:6)

**The CRICOS code for this degree.** ..... 048696M

**UOW postgraduate degrees can start in Autumn Session (February), Spring Session (July) or Trimesters 1, 2 or 3 (January, May or August). See page 77 for key dates.**

**Any special entry requirements for the degree.**

## DESCRIPTION

This is a summary of the key features of the degree.

More detailed information on all our degrees can be found online at [coursefinder.uow.edu.au](http://coursefinder.uow.edu.au) or by using the web link under the course name or specialisation.

## SPECIALISATIONS

A 'specialisation' is where you can choose to study a particular area within a single Master degree; for example a specialisation in Network and Security Information within the Master of Computer Science.

Most degrees allow you to take a specialisation, and some even allow you to take a second specialisation; for example, the Master of Business allows two specialisations, so you could specialise in both Marketing and International Business (or any of the other options available). A second specialisation (or double specialisation) normally does not lengthen the course duration.

This course guide indicates the specialisations available in each degree. A brief description of each specialisation is included, indicating the key areas you can expect to study in the program. For detailed lists of subjects, go to [coursefinder.uow.edu.au](http://coursefinder.uow.edu.au), search for your course and go to 'course structure'.





# SCHOLARSHIPS

**[uow.edu.au/future/international/apply/scholarships](http://uow.edu.au/future/international/apply/scholarships)**

Visit the above website for links to all available scholarships offered by UOW, the Australian Government and a number of international organisations.

Popular scholarships are listed here:

## COURSEWORK

### SYDNEY BUSINESS SCHOOL SCHOLARSHIPS

There are five (5) partial tuition scholarships available for students commencing their first course at UOW's Sydney Business School in each of the three (3) trimesters.

The scholarship offers a 25% reduction of the tuition fee for the standard duration of the course.

For details, and the application form, go to **[business.uow.edu.au/sydney-bschool/future/scholarships/UOW100704](http://business.uow.edu.au/sydney-bschool/future/scholarships/UOW100704)**

## RESEARCH

### RESEARCH SCHOLARSHIPS

UOW offers a wide range of research scholarships and awards to eligible International Higher Degree Research students. The UOW HDR scholarships are in the form of allowances to assist candidates in meeting their living costs while they undertake their research. They can include: Annual Stipends, Living Allowances and Tuition Fee costs.

The main UOW scholarship schemes are the International Postgraduate Research Scholarships (IPRS), University Postgraduate Awards (UPA) and International Postgraduate Tuition Awards (IPTA). Applications close 17 October for Autumn (February) Session. Subject to availability, applications for Spring (July) Session close 12 March.

There are also scholarships offered by individual Faculties or research centres, as well as scholarships offered in cooperation with overseas organisations such as the Chinese Scholarships Council and the Vietnamese Government.

Information on all research scholarship schemes, including details on how to apply (all HDR applications including scholarships must be submitted online) go to:

**[uow.edu.au/research/rsc/prospective/UOW064400](http://uow.edu.au/research/rsc/prospective/UOW064400)**

### AUSTRALIAN GOVERNMENT SCHOLARSHIPS

UOW participates in the range of schemes funded by the Australian Government – including the Australia Awards and Fellowships.

A photograph of two researchers in a laboratory setting. On the left, a man with glasses and a white lab coat is looking down at a sample. On the right, a woman with dark hair is also looking down, focused on her work. They are both wearing white lab coats. The background is slightly blurred, showing laboratory equipment and shelves. An orange rectangular overlay is positioned in the top right corner, and a larger orange rectangular overlay is in the bottom right corner, containing text.

# RESEARCH

Research students at UOW have direct access to academics who play a pivotal role in the latest research developments, and you will be able to play an active and exciting part in research projects of international importance. In most cases, you will be allocated two supervisors to ensure maximum support for your research project.

UOW continues to develop its reputation in key niche areas of research including intelligent polymers and superconductors; biomolecular, physical and chemical sciences; intelligence and security; innovative engineering; medical and clinical research; smart foods; public health; preventative health and health services; medical radiation physics; Asia-Pacific social transformation studies; and environmental conservation.

For those interested in an academic or research career, our research programs will ensure you achieve an advanced level of practice. For more information about research programs, see [uow.edu.au/future/international/research](http://uow.edu.au/future/international/research)





# TYPES OF RESEARCH DEGREES

## **DOCTOR OF PHILOSOPHY (4 YEARS)**

The UOW Doctor of Philosophy (PhD) is a four-year research-only program. Candidates' work must make an original contribution to the body of knowledge in a specific discipline. Students are required to demonstrate their capability for independent research leading to the production of a written thesis of their research findings.

## **PROFESSIONAL DOCTORATES (4 YEARS)**

These prepare professional leaders with research experience in their chosen area of study. Students usually undertake a thesis and approved study that may include specified coursework and/or practical work and/or performance. UOW offers Professional Doctorates in the areas of Public Health, Education, Psychology and Creative Arts.

## **MASTER OF PHILOSOPHY (2 YEARS)**

The standard duration of the Master of Philosophy is 2 years, comprising two-thirds research (72 credit points) and one-third coursework (24 credit points). Advanced standing for some or the entire coursework component may be granted to those who have completed a substantial piece of written research, for example in a Bachelor (Honours) or Masters by Coursework degree.

### **Entry Requirements for PhD, Professional Doctorates and Master of Philosophy**

Admission to a research degree normally requires the completion of a recognised four-year Bachelor (Honours) degree awarded at Class II, Division 2 or higher in a discipline relevant to the intended area of research. Completion of a Masters by Coursework degree containing substantial research or research methodology may also be considered. Some research courses have additional entry requirements. These are included in the course descriptions in this course guide.

Applicants to a PhD may in some cases be required to commence their enrolment in the relevant Master of Philosophy course and then apply to transfer to the PhD if they achieve a suitable standard.

## **DOCTOR OF PHILOSOPHY INTEGRATED (4 YEARS)**

The Doctor of Philosophy (Integrated) is a four-year research degree which integrates a traditional three-year PhD thesis with one year of coursework subjects.

The coursework is completed in the first year and allows candidates to improve their research skills while allowing additional time to develop a detailed research topic.

### **Entry requirements for PhD (Integrated)**

Applicants should have a minimum of four years of study at degree level, either a four-year Bachelor degree, or a Bachelor degree plus Masters by Coursework, with a minimum Credit average (65% or GPA 3.0 out of 4.0), or equivalent.

Applicants for the PhD Integrated do not need to submit a detailed research proposal or referees' reports. They should, however, provide a brief Supporting Statement of approximately 200 words outlining the broad area of intended future research and reason for wishing to enrol in a research program.



## HOW TO APPLY FOR A RESEARCH PROGRAM

### 1. FIND A SUPERVISOR AND AN ACADEMIC UNIT

Your first step is to determine your preferred field of study and find the faculty or academic unit that will best meet your requirements. The University's research areas are summarised on pages 37–39. You are encouraged to visit the staff web pages of each faculty to identify a potential supervisor who matches your area of research interest.

### 2. FIND A RESEARCH TOPIC

You must contact a potential supervisor of postgraduate studies or Faculty Head to discuss the broad plan for your research project prior to applying for admission. A list of Heads of Postgraduate Studies can be found at [uow.edu.au/research/rsc/prospective](http://uow.edu.au/research/rsc/prospective)

You will need to develop and submit a clear research proposal with your application. This proposal must summarise the topic/field of research you would like to pursue, including your proposed methodology and motivations for wanting to undertake this research.

For a guide on writing your research proposal, see [uow.edu.au/future/international/apply/how](http://uow.edu.au/future/international/apply/how)

### 3. APPLY FOR ADMISSION

You can apply through an authorised UOW representative in your home country or directly to the university at [apply.uow.edu.au](http://apply.uow.edu.au). All UOW research applications are online only. The online application provides full details of the documents you must provide together with transcripts of all your academic qualifications, including:

- a one-page research proposal as detailed above
- a curriculum vitae which includes details of your previous research experience and academic prizes/awards, employment history, and a list of relevant written work and publications; and
- two referees' reports.

## VISITING RESEARCH PRACTICUM PROGRAM

The Visiting Research Practicum Program is designed for students from overseas universities who wish to come to UOW to obtain unpaid research experience or professional/industrial practice with a UOW research team. This professional practicum is for a limited period (usually between three and six months) and may be a formal requirement for the award of a degree at the student's home university. A limited number of Visiting Research Practicum Scholarships are available each year to cover the supervision fee.

Application forms and further information are available at [uow.edu.au/future/studyabroad/research](http://uow.edu.au/future/studyabroad/research)



# RESEARCH AT UOW

For detailed information about research at UOW, it is important to visit our website:  
**[uow.edu.au/research](http://uow.edu.au/research)**

By exploring the website, you will learn more about the University's strengths, potential areas for your research and find out how to connect with potential supervisors.

The following pages provide an overview of the main research centres and institutes at UOW and research courses available within each of UOW's five faculties.

This information is not meant to be comprehensive—you should visit the faculty research pages indicated to begin the process of discovering the depth of research and specific program options available.

# FACULTY OF BUSINESS

[business.uow.edu.au/research](https://business.uow.edu.au/research)

## SCHOOLS

- Sydney Business School
- Accounting, Economics and Finance
- Management, Operations and Marketing

## RESEARCH

- Australian Health Services Research Institute
- Centre for Human & Social Capital Research
- Chinese Commerce Research Centre
- Small Business and Regional Research Group

## RESEARCH COURSES AVAILABLE

The PhD, PhD Integrated and MPhil programs are available across the range of study areas within the Faculty of Business.

ENTRY	Listed on pages 34.
IELTS	Overall 6.5 (R:6, W:6, L:6, S:6)
STARTS	PhD – Autumn (February) and Spring (July) PhD Integrated and MPhil – Trimester 1 (February) and Spring (July)
CAMPUS	Wollongong Innovation Campus and Sydney

# FACULTY OF ENGINEERING AND INFORMATION SCIENCES

[eis.uow.edu.au/research](https://eis.uow.edu.au/research)

## SCHOOLS

- Civil, Mining and Environmental Engineering
- Electrical, Computer and Telecommunications Engineering
- Mechanical, Materials and Mechatronic Engineering
- Computing and Information Technology
- Mathematics and Applied Statistics
- Physics

## RESEARCH

- ARC Centre of Excellence in Geotechnical Science and Engineering
- Australian Power Quality and Reliability Centre
- ARC Research Hub for Australian Steel Manufacturing
- Automotive CRC
- Centre for Business and Social Innovation
- Centre for Infrastructure Protection and Mining Safety
- Centre for IT-enabled Transformation
- Centre for Medical Radiation Physics
- CRC for Polymers
- Decision Systems Laboratory
- Defence Materials Technology Centre
- Energy Pipelines CRC
- Engineering and Mathematics Education Research Group
- Engineering Manufacturing
- Engineering Materials
- ICT Research Institute
- Institute for Mathematics and its Applications
- Institute for Superconducting and Electronic Materials
- Intelligent Polymer Research Institute
- National Institute for Applied Statistical Research Australia
- Rail Manufacturing CRC
- SMART Infrastructure Facility
- Sustainable Buildings Research Centre

## RESEARCH COURSES AVAILABLE

The PhD, PhD Integrated and MPhil programs are available across the range of study areas within the Faculty of Engineering and Information Sciences.

ENTRY	Listed on pages 34.
IELTS	PhD and MPhil: Overall 6.5 (R:6, W:6, L:6, S:6) PhD Integrated: Overall 6.0 (R:5.5, W:5.5, L:5.5, S:5.5)
STARTS	Autumn (February) and Spring (July)

Visit [coursefinder.uow.edu.au](https://coursefinder.uow.edu.au) for full details of research degrees available, including study areas, intakes, fees, CRICOS codes, campus location, and additional entry requirements for individual areas of study.



# FACULTY OF LAW, HUMANITIES AND THE ARTS

[lha.uow.edu.au/research](http://lha.uow.edu.au/research)

## SCHOOLS

- The Arts, English and Media
- Humanities and Social Inquiry
- Law

## RESEARCH

- Australian National Centre for Ocean Resources and Security (ANCORS)
- Contemporary Arts and Social Transformation (CAST)
- Institute for Social Transformation Research (ISTR)
- Legal Intersections Research Centre (LIRC)

## RESEARCH COURSES AVAILABLE

The PhD and MPhil programs are available across the range of study areas within the Faculty of Law Humanities and the Arts. The PhD Integrated program is available in a number of Humanities study areas and the Faculty also offers a professional doctorate, the Doctor of Creative Arts.

ENTRY	Listed on pages 34. Plus additional requirements for some degrees in this Faculty.
IELTS	Overall 6.0 (R:5.5, W:5.5, L:5.5, S:5.5)
STARTS	Autumn (February) and Spring (July)

# FACULTY OF SCIENCE, MEDICINE AND HEALTH

[smah.uow.edu.au/research](http://smah.uow.edu.au/research)

## SCHOOLS

- Biological Sciences
- Chemistry
- Earth and Environmental Sciences
- Medicine
- Nursing

## MAJOR RESEARCH GROUPS

- Illawarra Health and Medical Research Institute (IHMRI)
- Centre for Archaeological Science
- Centre for Medical and Molecular Bioscience
- GeoQuEST Research Centre
- Centre for Atmospheric Chemistry
- Centre for Sustainable Ecosystem Solutions
- Health Impacts Research Cluster

Other research groups:

- Biomechanics Research Laboratory
- Biomolecular Structure, Dynamics and Function Group
- Cancer Drug Discovery Group
- Centre for Human & Applied Physiology
- Centre for Translational Neuroscience
- Illawarra and Southern Practice Research Network
- Lipid Research Centre
- Mass Spectrometry User Resource & Research Facility
- NSW/ACT Dementia Training Study Centre
- Proteostasis and Disease Research Centre
- Smart Foods Centre
- Soft Materials Group

## RESEARCH COURSES AVAILABLE

The PhD and MPhil programs are offered across the range of study areas within the Faculty of Science, Medicine and Health. The PhD Integrated is available in a number of areas in Health and Science.

ENTRY	Listed on pages 34.
IELTS	Overall 6.5 (R:6, W:6, L:6, S:6) for most programs Overall 7.0 (R:7, W:7, L:7, S:7) for medicine Overall 6.0 (R:5.5, W:5.5, L:5.5, S:5.5) for PhD Integrated in science.
STARTS	Autumn (February) and Spring (July)

Visit [coursefinder.uow.edu.au](http://coursefinder.uow.edu.au) for full details of research degrees available, including study areas, intakes, fees, CRICOS codes, campus location, and additional entry requirements for individual areas of study.

# FACULTY OF SOCIAL SCIENCES

[socialsciences.uow.edu.au/research](https://socialsciences.uow.edu.au/research)

## SCHOOLS

- Education
- Psychology
- Health and Society
- Department of Geography and Sustainable Communities

## RESEARCH

- Early Start Research Institute
- Australian Centre for Cultural Environmental Research
- Centre for Health Initiatives
- Centre for Psychophysics, Psychophysiology and Psychopharmacology
- Illawarra Institute for Mental Health

## RESEARCH COURSES AVAILABLE

The PhD, PhD Integrated and MPhil programs are offered across the range of study areas within the Faculty of Social Sciences. The Faculty also offers four professional doctorates, the Doctor of Education, the Doctor of Public Health, the Doctor of Psychology (Clinical) and the Doctor of Philosophy (Clinical Psychology).

ENTRY	Listed on pages 34. Programs in Education, Psychology and Public Health have other requirements.
IELTS	Overall 6.0 (R:6, W:6, L:6, S:6) except for clinical psychology which requires Overall 7.0 (R:7, W:7, L:7, S:7)
STARTS	Autumn (February) and Spring (July) for most programs Autumn (February) only for programs in psychology.

Visit [coursefinder.uow.edu.au](https://coursefinder.uow.edu.au) for full details of research degrees available, including study areas, intakes, fees, CRICOS codes, campus location, and additional entry requirements for individual areas of study.





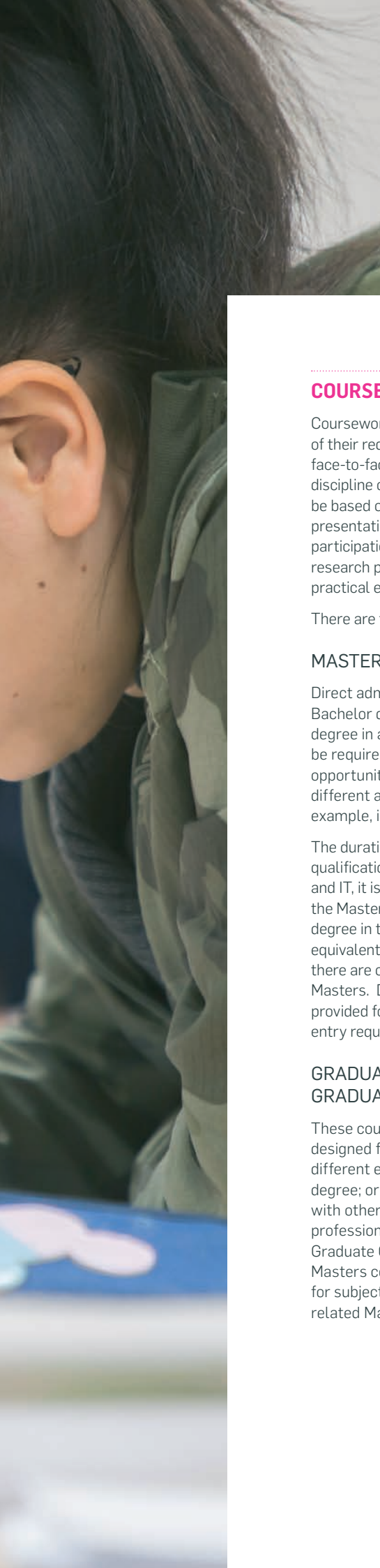
A close-up, high-angle shot of a young woman with dark hair tied back, wearing glasses and a green jacket. She is focused on writing in a blue-lined notebook with a blue pen. The background is blurred, showing other students in a classroom or lecture hall. A pink rectangular graphic element is positioned to the left of the title.

# COURSEWORK

UOW Coursework programs are designed to help you make a real impact on your working environment. You will develop a practical and relevant skills base—critical in today's workplace—from a range of courses which present the latest findings and contemporary practices from around the globe.

Many UOW Coursework programs take a cross-disciplinary approach, allowing you to tailor your qualification to a specific area of interest. You can elect to develop your expertise in a particular area to suit your current vocational goals or to change your career direction.

A number of Masters programs also include the option to complete a research project.



## COURSEWORK DEGREES

Coursework programs normally have the majority of their requirements met by the completion of face-to-face classroom subjects in a particular discipline or professional area. Assessment may be based on a combination of written assignments, presentations, formal examinations, class participation or practical exercises. A minor research project, research preparation subjects, or practical experience subjects may also be included.

There are three main types of coursework degrees:

### MASTERS BY COURSEWORK (1–2 YEARS)

Direct admission normally requires a recognised Bachelor degree. In most cases, a Bachelor degree in a related area to the Masters will be required for entry; however there are some opportunities to take a Masters degree in a different area to your Bachelor degree (for example, in Business).

The duration will also depend on your previous qualification; for example in Business, Engineering and IT, it is possible to reduce the duration of the Masters to 1.5 years if you have a Bachelor degree in the same discipline. If you have a degree equivalent to an Australian Bachelor Honours, there are opportunities to complete a one-year Masters. Details of the minimum duration are provided for each course in this guide (shown in the entry requirements or as available credit transfer).

### GRADUATE DIPLOMA (1 YEAR) GRADUATE CERTIFICATE (6 MONTHS)

These courses vary in their purpose, and are designed for students who may be seeking a different educational direction from their Bachelor degree; or those without a Bachelor degree but with other academic qualifications and/or relevant professional experience. Graduate Diplomas and Graduate Certificates also provide a pathway to a Masters course, normally earning credit transfer for subjects completed if progressing to the related Masters.

## TWO-YEAR POSTGRADUATE STUDY OPTIONS

The options for two years of study in postgraduate coursework include:

- Two-year Masters courses
- Graduate Certificate or Graduate Diploma plus a Masters Degree

Full details of two-year courses and packages are noted in the relevant course section of this guide.

Students seeking to qualify for visas to remain in Australia after their studies are completed on the basis of "two years of full-time study" should be aware that by being awarded the full credit exemption available through a credit transfer arrangement, the pattern of resulting study may not meet the Australian Department of Immigration and Border Protection definitions of "full-time study".

## COURSE STRUCTURES

Coursework degrees at UOW are based on a credit point structure. Individual subjects are allocated a credit point value: the majority of subjects have a value of 6 or 8 credit points (cp) each. A typical structure for a one-year coursework degree is the completion of eight subjects worth 6 cp each, totalling 48 cp. Details of the credit points required to complete each degree are shown next to the duration for each course. You should note the following when reading the course structure information:

- not all elective subjects are available in all years
- you should verify details of the latest course structures and subjects within the relevant faculty via the online Course Handbook at [uow.edu.au/handbook](http://uow.edu.au/handbook)
- individual subjects shown in the course structures may have their own prerequisites which have to be satisfied before enrolment is permitted in that subject.



# BUSINESS / SYDNEY BUSINESS SCHOOL

## LOCATIONS

Sydney Business School is the graduate school of the Faculty of Business. Students have the flexibility to study in Sydney CBD or Wollongong.

## Master of Business Administration [MBA]

[go.uow.edu.au/mba](http://go.uow.edu.au/mba)

CRICOS 013031G

DURATION 1 or 1.5 years\* (72 cp)

STARTS Trimesters 1 (February) and 3 (August)

LOCATION Wollongong and Sydney\*\*

### ENTRY REQUIREMENTS

Recognised Bachelor degree with an equivalent average mark of 50%, plus a minimum of three years' relevant full-time professional or managerial experience and a one-page Statement of Motivation<sup>^</sup>. Other tertiary qualifications combined with extensive professional work experience will be considered.

IELTS Overall 6.5 (R:6, W:6, L:6, S:6)

\*The CRICOS-registered duration is 1.5 years, requiring completion of three subjects per trimester x four trimesters. Completion of four subjects per trimester may enable completion in three trimesters (1 year).

\*\*all specialisations are offered at the Wollongong campus; Financial Management, International Business, and Management are offered at the Sydney Campus.

## Master of Business Administration Advanced

[go.uow.edu.au/mba-adv](http://go.uow.edu.au/mba-adv)

CRICOS 048696M

DURATION 2 years (96 cp)

STARTS Trimesters 1 (February) and 3 (August)

LOCATION Wollongong and Sydney

### ENTRY REQUIREMENTS

Recognised Bachelor degree with an equivalent average mark of 50%, plus a minimum of three years' relevant full-time professional or managerial experience and a one-page Statement of Motivation<sup>^</sup>. Other tertiary qualifications combined with extensive professional work experience will be considered.

IELTS Overall 6.5 (R:6, W:6, L:6, S:6)

The Master of Business Administration and the Master of Business Administration Advanced are designed for experienced professionals, with ambition and drive, wishing to develop their strategic managerial and potential leadership skills gaining a holistic business point of view which is required to operate effectively in an increasingly competitive and evolving global business environment.

This course examines the global business environment and develops the management skills and competencies that are necessary in order to effectively operate in a global business environment.

<sup>^</sup> the Statement of Motivation should be no more than one page, written in English, and address your motivation for studying the MBA with the Sydney Business School; and how the degree will help achieve your career goals and aspirations.

## COURSE STRUCTURE

The MBA comprises 12 subjects including one elective subject. The MBA Advanced provides the opportunity to add a specialisation to the MBA through the completion of an additional 4 subjects.

MBA core subjects:

- Accounting for Managers
- Business Analytics
- Corporate Governance
- Economics for Modern Business
- Financial Strategy
- International Business Strategies
- Integrated Business Project
- Managing for Success
- Managerial Concepts and Skills
- Leading in Contemporary Organisations
- Marketing for Strategic Decisions

Plus one elective from an approved list.

MBA Advanced students complete the 12 MBA subjects plus four subjects from one of the specialisations below.

## ACCOUNTING

- Accounting Foundations for Professionals
- Applied Management Accounting
- Professional Practice – Auditing and Risk Assurance
- Professional Practice – Taxation

## FINANCE

- Banking Theory and Practice
- Enterprise Risk Management
- Investment Management
- Multinational Financial Management

## HUMAN RESOURCE MANAGEMENT

- Human Resource Development
- Job Analysis, Recruitment and Selection
- Strategic Human Resource Management

Plus one elective from an approved list.

## LOGISTICS

- Logistics Systems
- Procurement and Inventory Management
- Supply and Operations Management
- Strategic Supply Chain Management

## MARKETING

- Consumer Behaviour
- Marketing Strategy
- Marketing Communications
- Research for Marketing Decisions

## PROJECT MANAGEMENT

- Advanced Project Management
- Information Systems for Project Management
- Negotiation Theory and Practice for Project Management
- Project Management

---

## Master of Business

[go.uow.edu.au/mbus](http://go.uow.edu.au/mbus)

**CRICOS** 082826A - single specialisation  
082829J - double specialisation

**DURATION** 1 or 1.5 years\* (72 cp) - single specialisation  
2 years (96 cp) - double specialisation

**STARTS** Trimesters 1 (February), 2 (May) and 3 (August)

**LOCATION** Wollongong and Sydney\*\*

### ENTRY REQUIREMENTS

Recognised Bachelor degree with an equivalent average mark of 50%; or a UOW Graduate Certificate in Business. Other tertiary qualifications combined with extensive professional work experience will be considered.

**CREDIT** Students who hold a Bachelor degree in a Business or Commerce related area may be granted credit for 24 cp (4 core subjects).

**IELTS** Overall 6.5 (R:6, W:6, L:6, S:6)

\*The CRICOS-registered duration is 1.5 years, requiring completion of three subjects per trimester for four trimesters. Completion of four subjects per trimester may enable completion in three trimesters (1 year).

\*\*All specialisations are offered at the Wollongong campus; Financial Management, International Business, and Management are offered at the Sydney Campus.

---

The Master of Business is designed for middle managers, or those aspiring to middle management in local or multinational organisations. The specialisation options will enable students to develop and demonstrate technical knowledge and skills in these areas as well as general business knowledge gained through the foundation subjects and research skills gained through the research subjects. Those who aspire to progress their career through these functional areas or to a general management role would benefit from completion of this degree.

The following specialisations are available:

- Financial Management
- Human Resource Management
- International Business
- Management
- Marketing

## COURSE STRUCTURE

To graduate with a single specialisation, candidates are required to complete 12 subjects (72 cp) comprising four foundation subjects, a capstone research project, and seven subjects (five compulsory and two electives) from their chosen specialisation.

The double specialisation requires completion of 16 subjects (96cp) comprising four foundation subjects, a capstone research project and 10 specialisation subjects (comprising the five core subjects for each of the two specialisations), one elective subject from either of the specialisation electives.

Foundation subjects for the Master of Business:

- Accounting and Financial Management
- Exploring Global Business Challenges from Multiple Perspectives
- Organisational Behaviour and Management
- Principles of Marketing Management

Research capstone subject:

- Integrated Business Project

## SPECIALISATIONS

---

### FINANCIAL MANAGEMENT

Compulsory subjects:

- Financial Institutions
- Financial Statement Analysis for Business
- Financial Strategy
- Investment Management
- Statistics for Decision Making

Plus two electives from an approved list.

---

### HUMAN RESOURCE MANAGEMENT

Compulsory subjects:

- Human Resource Development
- Job Analysis, Recruitment and Selection
- Management of Workplace Health and Safety
- Performance Management
- Strategic Human Resource Management

Plus two electives from an approved list.

---

### INTERNATIONAL BUSINESS

Compulsory subjects:

- Cross Cultural Management
- International Business Environment
- International Business Strategies
- International Marketing Strategy
- Multinational Financial Management

Plus two electives from an approved list.

---

### MANAGEMENT

Compulsory subjects:

- Cross Cultural Management
- Management of Change
- Organisational Analysis
- Project Management
- Strategic Management

Plus two electives from an approved list.

---

### MARKETING

Compulsory subjects:

- Consumer Behaviour
- Marketing Communications
- Marketing Strategy
- Research for Marketing Decisions
- Social Marketing

Plus two electives from an approved list.

---

## PROFESSIONAL RECOGNITION

Graduates of the Master of Business (Financial Management) are eligible for membership of the Financial Services Institute of Australasia (FINSIA). Graduates of the Master of Business (Marketing) may be eligible for membership of the Australian Marketing Institute.

For more information, visit [business.uow.edu.au/accreditation](http://business.uow.edu.au/accreditation)



---

## Master of International Business

[go.uow.edu.au/mintbus](http://go.uow.edu.au/mintbus)

CRICOS 026342G

DURATION 1 or 1.5 years\* (72 cp)

STARTS Trimesters 1 (February), 2 (May) and 3 (August)

LOCATION Wollongong and Sydney

### ENTRY REQUIREMENTS

Recognised Bachelor degree with an equivalent average mark of 50%, or a UOW Graduate Certificate in Business. Other tertiary qualifications combined with extensive professional work experience will be considered.

**CREDIT** Students who hold a Bachelor degree in a Business or Commerce related area, may be granted credit for 24 cp (4 core subjects).

**IELTS** Overall 6.5 (R:6, W:6, L:6, S:6)

---

The Master of International Business program prepares students to succeed in various international business, managerial and professional positions in the global economy. Globalisation of the marketplace requires businesses to be increasingly innovative and competitive. Managers need to understand the complexities of global culture, political, economic, marketing, organisational and financial forces and recognise how they can impact on the success of their business.

This course examines the global business environment and develops the management skills and competencies that are necessary in order to effectively operate in a global business environment.

## COURSE STRUCTURE

Core Subjects:

- Accounting and Financial Management
- International Business Environment
- International Business Strategies
- International Financial Management
- Integrated Business Project
- Managing People in Multi-National Companies
- Marketing in a Global Economy
- Operations and Supply Chain Management
- Organisational Behaviour and Management
- Principles of Marketing Management

Plus two electives from an approved list.

---

## Master of Applied Finance

[go.uow.edu.au/mappfin](http://go.uow.edu.au/mappfin)

CRICOS 083838M

DURATION 1 or 1.5 years\* (72 cp)

STARTS Trimesters 1 (February) and 3 (August)

LOCATION Wollongong and Sydney

### ENTRY REQUIREMENTS

A recognised Bachelor degree in a Business, Engineering, Maths or IT related specialisation with an equivalent average mark of 50% or a Graduate Certificate in Applied Finance. Other tertiary qualifications combined with extensive professional work experience will be considered.

**CREDIT** Students who have an offer for this course and hold a Bachelor degree in Finance, may be granted credit for 24 cp (4 core subjects).

**IELTS** Overall 6.5 (R:6, W:6, L:6, S:6)

\*The CRICOS-registered duration is 1.5 years, requiring completion of three subjects per trimester for four trimesters. Completion of four subjects per trimester may enable completion in three trimesters (1 year).

---

## Master of Applied Finance (Investing and Corporate Treasury)

[go.uow.edu.au/mapfin-ict](http://go.uow.edu.au/mapfin-ict)

CRICOS 087684C

DURATION 2 years (96 cp)

STARTS Trimesters 1 (February) and 3 (August)

LOCATION Wollongong and Sydney

### ENTRY REQUIREMENTS

A recognised Bachelor degree in a Business, Engineering, Maths or IT related specialisation with an equivalent average mark of 50% or a Graduate Certificate in Applied Finance. Other tertiary qualifications combined with extensive professional work experience will be considered.

**CREDIT** Students who have an offer for this course and hold a Bachelor degree in Finance, may be granted credit for 24 cp (4 core subjects).

**IELTS** Overall 6.5 (R:6, W:6, L:6, S:6)

---

The Master of Applied Finance provides an advanced understanding of financial decision-making in one of three specialisations: Investing; Financial Services; or Corporate Treasury. Investing focuses on investment and portfolio management. Financial Services focuses on financial institutions, as well as bank management and lending. Corporate Treasury is concerned with the management of corporate finances. Students can undertake a two-year option by completing the Master of Applied Finance (Investing and Corporate Treasury), comprising four additional subjects to the 1.5-year option.

## COURSE STRUCTURE

The Master of Applied Finance comprises of twelve subjects including four core subjects, six compulsory subjects for the chosen specialisation, plus two electives from an approved list. Master of Applied Finance (Investing and Corporate Treasury) students undertake four core subjects, nine compulsory subjects from the Investing and Corporate Treasury specialisation plus three elective subjects from an approved list.

Core subjects:

- Financial Institutions
  - Financial Statement Analysis for Business
  - Financial Strategy
  - Statistics for Decision Making
- 

## INVESTING

Compulsory subjects:

- Corporate Governance
- Enterprise Risk Management
- Investment Management
- Portfolio Management
- Portfolio Simulation
- Research in Financial Markets and Institutions

Plus two electives from an approved list.

---

## FINANCIAL SERVICES

Compulsory subjects:

- Banking and Financial Institutions Law
- Banking Theory and Practice
- Bank Lending and Securities
- Corporate Governance
- Enterprise Risk Management
- Research in Financial Markets and Institutions

Plus two electives from an approved list.

---

## CORPORATE TREASURY

Compulsory subjects:

- Advanced Managerial Finance
- Banking Theory and Practice
- Corporate Governance
- Enterprise Risk Management
- Multinational Financial Management
- Research in Financial Markets and Institutions

Plus two electives from an approved list.

## PROFESSIONAL RECOGNITION

Recognised by the Financial Services Institute of Australasia (FINSIA).  
For more information visit: [business.uow.edu.au/accreditation](http://business.uow.edu.au/accreditation)

---

## Master of Professional Accounting<sup>A</sup> [MPA]

[go.uow.edu.au/mpa](http://go.uow.edu.au/mpa)

CRICOS 087681F

DURATION 1 or 1.5 years\* (72 cp)

STARTS Trimesters 1 (February) and 3 (August)

LOCATION Wollongong and Sydney

### ENTRY REQUIREMENTS

Recognised Bachelor degree with an equivalent average mark of 50% or a Graduate Certificate in Professional Accounting.

IELTS Overall 6.5 (R:6, W:6, L:6, S:6)

\*The CRICOS-registered duration is 1.5 years, requiring completion of three subjects per trimester for four trimesters. Completion of four subjects per trimester may enable completion in three trimesters (1 year).

<sup>A</sup> Subject to final approval

---

## Master of Professional Accounting Advanced<sup>A</sup> [MPA Adv]

[go.uow.edu.au/mproacc-adv](http://go.uow.edu.au/mproacc-adv)

CRICOS 087680G

DURATION 2 years (96 cp)

STARTS Trimesters 1 (February) and 3 (August)

LOCATION Wollongong and Sydney

### ENTRY REQUIREMENTS

Recognised Bachelor degree with an equivalent average mark of 50% or a Graduate Certificate in Professional Accounting.

IELTS Overall 6.5 (R:6, W:6, L:6, S:6)

<sup>A</sup> Subject to final approval

The MPA is designed for non-Accounting graduates to gain the qualifications required to practise as an accountant. Students will develop an understanding of legal, practical and theoretical issues surrounding the practice of accounting.

To graduate with the MPA, students are required to complete 12 core subjects (72 cp).

When completing the MPA (Advanced) students are required to complete 16 subjects (96 credit points) including 12 core subjects and 4 subjects within the International Business or Financial Management specialisation.

## COURSE STRUCTURE

Core subjects:

- Accounting Foundations for Professionals
- Applied Financial Accounting A
- Applied Management Accounting
- Economics for Professionals
- Law of Business Organisations
- Legal Studies for Professionals
- Management and Information Systems
- Managerial Finance
- Professional Practice – Auditing and Risk Assurance
- Professional Practice – Taxation
- Statistics for Decision Making
- Theoretical Foundations of Accounting

---

## FINANCIAL MANAGEMENT

Core subjects listed above plus Financial Statement Analysis for Business and 3 subjects from an approved list of Finance subjects

---

## INTERNATIONAL BUSINESS

Core subjects listed above plus Intercultural Professional Practice or Cross Cultural Management and Job Analysis Recruitment, then 2 elective subjects from an approved list of International Business Subjects.

## PROFESSIONAL RECOGNITION

The Master of Professional Accounting and the Master of Professional Accounting (Advanced) enables students to meet the educational and membership requirements of a number of Australian and international professional associations.

For more information visit [business.uow.edu.au/accreditation](http://business.uow.edu.au/accreditation)

---

## Master of Science (Logistics/Project Management)

[go.uow.edu.au/msci-log](http://go.uow.edu.au/msci-log)

CRICOS 042635F - single specialisation

080830K - double specialisation

DURATION 1 or 1.5 years\* (72 cp) - single specialisation

2 years (96 cp) - double specialisation

STARTS Trimesters 1 (February), 2 (May) and 3 (August)

LOCATION Wollongong and Sydney

### ENTRY REQUIREMENTS

Recognised Bachelor degree, in a specialisation related to Business, Engineering, Maths or IT with an equivalent average mark of 50% or a Graduate Certificate in Business. Other tertiary qualifications combined with extensive professional work experience will be considered.

CREDIT Students who have an offer for the Master of Science (Logistics/Project Management) and hold a Bachelor degree in a Project Management, Logistics, Supply Chain Management or a related area, may be granted credit for 24 cp (4 core subjects).

IELTS Overall 6.5 (R:6, W:6, L:6, S:6)

\*The CRICOS-registered duration is 1.5 years, requiring completion of three subjects per trimester x four trimesters. Completion of four subjects per trimester may enable completion in three trimesters (1 year).

Under the Master of Science degree you can specialise in either Logistics or Project Management, or complete both specialisations.



---

## LOGISTICS

This course is designed to provide professionals working in logistics and operations management, particularly in the manufacturing, transport, retail and service industries, with the skills to manage the flow of materials and information within and between organisations and their business environments. Students will learn how to implement a supply chain strategy within an organisation and develop skills in forecasting, production and service planning.

---

## PROJECT MANAGEMENT

Efficient project management provides organisations with improved ability to plan, implement and control their business activities. The growth of new forms of technology in project management has prompted organisations to look for skilled project managers who can enhance the performance of their businesses. The Master of Science (Project Management) equips students with comprehensive project management skills and teaches strategies for dealing with a broad range of issues encountered within business organisations.

## COURSE STRUCTURE

Candidates are required to complete a total of eight core subjects (48 cp) with either four subjects (24 cp) from one of the specialisation options if taking a single specialisation, or eight subjects (48 cp) if taking the double specialisation option.

Core subjects:

- Financial Management
- Integrated Business Project
- Operations and Supply Chain Management
- Organisational Behaviour and Management
- Principles of Marketing Management
- Project Management
- Quality in Management
- Supply Chain Management

Additional subjects for the Logistics specialisation:

- Logistics Systems
- Procurement and Inventory Management
- Strategic Supply Chain Management
- Quantitative Methods for Decision Making

Additional subjects for the Project Management specialisation:

- Advanced Project Management
- Information Systems for Project Managers
- Managing People in Organisations
- Negotiation Theory and Practice for Project Management

## PROFESSIONAL RECOGNITION

The Master of Science (Logistics) is an accredited program with the Chartered Institute of Procurement and Supply and is certified by the Chartered Institute of Logistics and Transport (CILT). For more information, visit [business.uow.edu.au/accreditation](https://business.uow.edu.au/accreditation)

## PATHWAYS TO MASTERS COURSES IN BUSINESS

---

### Graduate Certificate in Business

[go.uow.edu.au/gcert-bus](https://go.uow.edu.au/gcert-bus)

CRICOS 061244G

DURATION 3 months (24 cp)

STARTS Trimesters 1 (February), 2 (May) and 3 (August)

LOCATION Wollongong and Sydney

#### ENTRY REQUIREMENTS

Bachelor degree or a tertiary academic qualification of at least 3 years, full-time or 3 years, full-time equivalent managerial/professional work experience or 7 years, full-time equivalent general work experience.

IELTS Overall 6.0 (R:6, W:6, L:5, S:5)

The Graduate Certificate in Business is for students who do not currently meet the requirement for direct entry to a Masters program offered by the Sydney Business School. The course is fully nested with Master of Business, Master of International Business and Master of Science (Logistics/Project Management) degrees, meaning that students can progress to those Masters programs with credit for all four subjects completed.

## COURSE STRUCTURE

Students complete four subjects:

- Accounting and Financial Management
- Organisational Behaviour and Management
- Principles of Marketing Management

Plus one of the following:

- Contemporary Perspectives in Business\* or
- Operations and Supply Chain Management\*\*

\*recommended for students intending to progress to the Master of Business or MBA.

\*\*recommended for students intending to progress to the Master of Science or Master of International Business.

## PROGRESSION TO MASTERS COURSES

Upon successful completion of the Graduate Certificate in Business, students may enrol in a Masters program offered by Sydney Business School. Students will be granted credit for four subjects in the following degrees:

- Master of Business (all single or double specialisation programs)
- Master of International Business
- Master of Science (Logistics and/or Project Management)

Progression to other Masters programs offered by the Sydney Business School, including the MBA, may also be possible with some credit.

---

## Graduate Certificate in Professional Accounting<sup>A</sup>

[go.uow.edu.au/gcertproacc](http://go.uow.edu.au/gcertproacc)

**CRICOS** 087682E  
**DURATION** 3 months (24 cp)  
**STARTS** Trimesters 1 (February) and 3 (August)  
**LOCATION** Wollongong and Sydney

### ENTRY REQUIREMENTS

A recognised Bachelor degree or a tertiary academic qualification with a duration of at least 3 years full-time. Applicants with 3 years' full-time equivalent managerial/professional work experience in Accounting will also be considered.

**IELTS** Overall 6.0 (R:6, W:6, L:5, S:5)

<sup>A</sup> Subject to final approval

---

The Graduate Certificate in Professional Accounting is an introductory course designed to provide a general understanding of accounting and related areas in Business study. It will provide foundation knowledge in the areas of accounting, finance and economics.

Successful completion of the Graduate Certificate in Professional Accounting provides a pathway to the Master of Professional Accounting or Master of Professional Accounting Advanced and students will receive 4 subjects credit.

Students are required to complete a total of four subjects:

- Accounting Foundation for Professionals
- Economics for Professionals
- Statistics for Decision Making
- Managerial Finance

---

## Graduate Certificate in Applied Finance<sup>A</sup>

[go.uow.edu.au/gcertapfin](http://go.uow.edu.au/gcertapfin)

**CRICOS** 087683D  
**DURATION** 3 months (24 cp)  
**STARTS** Trimesters 1 (February) and 3 (August)  
**LOCATION** Wollongong and Sydney

### ENTRY REQUIREMENTS

A recognised Bachelor degree or a tertiary academic qualification with a duration of at least 3 years full-time. Applicants with 5 years' full-time equivalent managerial/professional work experience in Finance will also be considered.

**IELTS** Overall 6.0 (R:6, W:6, L:5, S:5)

<sup>A</sup> Subject to final approval

---

The Graduate Certificate in Applied Finance is an introductory course designed to provide a general understanding of Applied Finance.

Successful completion of the Graduate Certificate in Applied Finance provides a pathway to the Master of Applied Finance and receive 4 subjects credit towards the Masters degree.

Students are required to complete a total of four subjects:

- Financial Statement Analysis for Business
- Advanced Managerial Finance
- Statistics for Decision Making
- Corporate Governance

---

## WORKPLACE LEARNING SUBJECTS

Global Workplace Practice (GWP900) is a subject designed to assist Sydney Business School students access the Australian workforce through work experience or an industry-based project, enabling the application of discipline-specific knowledge to practical workplace settings. By completing this subject you will be able to:

- understand intercultural issues required to work effectively in a global workplace environment
- communicate effectively with specialist and non-specialist audiences
- work collaboratively in a team environment
- critically reflect on the design, implementation and evaluation of a work-based project or placement
- create a tailored job application which aligns with an organisation's values and specific job requirements
- create a dynamic career development plan

GWP900 can be included as an elective subject in the MBA, MBA Advanced, Master of Business, Master of International Business, Master of Professional Accounting (Advanced) and Master of Applied Finance.

The Master of Professional Accounting and Master of Professional Accounting Advanced include the subject Intercultural Professional Practice. This subject similarly enables students to develop the knowledge and skills required to successfully enter the Australian workforce as an accounting professional.

---



## COMPLETE TWO BUSINESS MASTERS DEGREES

Through approved articulation arrangements between various courses offered by the Sydney Business School, you can complete two Masters degrees and minimise the time taken to complete both programs.

The following is a summary of articulation arrangements between Masters courses, showing the number of subjects which may be granted as advanced standing into the second course, and the minimum/maximum duration to complete both.

First Masters	Articulation into 2nd Masters	Subjects (cp) advanced standing in 2nd Masters	Subjects (cp) to complete both courses	Duration to complete both courses
Master of Business (Financial Management)	Master of Applied Finance	4 subjects (24 cp)	12 + 8 = 20 subjects 72 + 48 = 120 cp	5 – 7 trimesters 20 – 28 months
Master of Business (any specialisation)	Master of Science (Logistics or Project Management)	4 subjects (24 cp) Students who complete TBS 908 or TBS 935 as part of their specialisation will receive additional credit (maximum credit available 6 subjects)	12 + 8 = 20 subjects 72 + 48 = 120 cp	5 – 7 trimesters 20 – 28 months
Master of Science (Logistics or Project Management)	Master of Business (any specialisation)			
Master of Business (International Business)	Master of International Business	6 subjects (36 cp)	12 + 6 = 18 subjects 72 + 36 = 108 cp	5 – 6 trimesters 20 – 24 months
Master of International Business	Master of Business (International Business)			
Master of International Business	Master of Business (any specialisation excl. International Business)	4 subjects (24 cp)	12 + 8 = 20 subjects 72 + 48 = 120 cp	5 – 7 trimesters 20 – 28 months
Master of International Business	Master of Science (Logistics or Project Management)	5 subjects (30 cp)	12 + 7 = 19 subjects 72 + 42 = 114 cp	5 – 7 trimesters 20 – 28 months
Master of Science (Logistics or Project Management)	Master of International Business			
Master of Science (Logistics or Project Management)	Master of Business Administration*	3 subjects (18 cp)	12 + 9 = 21 subjects 72 + 54 = 126 cp	6 – 7 trimesters 24 – 28 months
Master of International Business		3 subjects (18 cp)		
Master of Business (any specialisation)		4 subjects (24 cp)	12 + 8 = 20 subjects 72 + 48 = 120 cp	5 – 7 trimesters 20 – 28 months
Master of Business Administration	Master of Business (any specialisation)			

\*applicants must have at least two years' relevant professional experience if articulating into the MBA from another Masters degree at UOW.

# EDUCATION

## Master of Education

[go.uow.edu.au/med](http://go.uow.edu.au/med)

CRICOS 083833E

DURATION 1.5 years (72 cp)

STARTS Autumn (February), Spring (July)

### ENTRY REQUIREMENTS

A recognised Bachelor degree in any area.

**CREDIT** Applicants with a specialisation in Education plus three years, teaching experience may be eligible for credit for 24 cp (one session).

**IELTS** Overall 6.5 (R:6, W:6, L:6, S:6)

The Master of Education is a higher degree for teachers and educators who want to pursue advanced studies in one of the following specialist areas. The program offers sound theoretical foundations and extensive practical skills that address the broader aspects of education and training.

## COURSE STRUCTURE

The Master of Education requires completion of 12 subjects (72 cp), normally comprising the following structure:

- Foundation education studies - three subjects (18 cp). These subjects vary depending on the specialisation chosen, covering topics which may include: assessment principles and practices; psychology for educators; and current issues in education curriculum, pedagogy and practice.
- Research methodology and a project or professional development - two subjects (12 cp)
- Specialisation - five subjects (30 cp)
- Electives - two subjects (12 cp)

## DISTANCE EDUCATION

The School of Education offers a number of courses by distance education mode. These include the Master of Education – including the specialisations identified below. Other distance programs, including in physical and health education, are in development. For further information about studying by distance, visit: [socialsciences.uow.edu.au/education/courses](http://socialsciences.uow.edu.au/education/courses)

## SPECIALISATIONS

The following provides an overview of each specialisation and an indication of subjects available. Students normally will take five subjects from the options provided.

### ADULT AND VOCATIONAL EDUCATION

This specialisation is for people who want to improve their practice or advance their career in adult and further education. Current or aspiring educators, coordinators and leaders of organisations such as professional or community education providers, TAFE and private colleges will benefit from studying this degree.

Subjects include:

- Curriculum Design and Evaluation\*
- Introduction to Technology in Education
- Multiliteracies and Numeracies in Adult, Vocational and Higher Education\*
- Online Learning and Teaching
- Professional Development for Adult, Vocational and Higher Education
- Teaching for Diversity in Adult, Vocational and Higher Education\*
- The Global Challenge in Adult, Vocational and Higher Education\*

\*Required subjects for this specialisation.

Plus the following normally taken as Foundation education subjects:

- Innovation for Practitioners in Adult, Vocational and Higher Education
- Learning About Learning in Adult, Vocational and Higher Education

A Graduate Diploma in Adult and Vocational Education (48 cp, one year duration – CRICOS 083555M) is also available. Students complete a program of eight subjects based on subjects available in the Masters course structure above.

### THE EARLY YEARS

This course is for qualified early childhood educators who want to increase their skill levels to become managers of early childhood centres, or teachers seeking to expand their career opportunities in child and family services. Subjects include:

- Early Years Curriculum Studies
- Healthy Lifestyles for Preschool Children: Physical Activity
- Management, Supervision and Leadership for Early Childhood Professionals
- Pedagogy, Practice and Play in Early Years
- Socio-cultural Perspectives in the Early Years

### EDUCATIONAL LEADERSHIP

This Educational Leadership specialisation is for people who are currently in leadership roles or who wish to pursue leadership positions in a wide range of organisations including schools, private industry, training providers, government and policy related fields. Whether you are a recent graduate or an established educator, this program will provide a firm foundation for pursuing higher level positions in educational administration, management or policy. Subjects include:

- Foundations of Educational Leadership\*
- Introduction to Educational Management\*
- Law for Educational Leaders
- Leadership of Curriculum and Instruction
- Leadership of Effective Change
- Leading, Developing & Managing People
- Mentoring Beginning Teachers

\*Required subjects for this specialisation.



---

## HIGHER EDUCATION

This specialisation is for people who lead and manage teaching in tertiary education settings. Program managers, course coordinators, heads of departments and leaders of organisational units in universities and higher education institutes can update their knowledge in effective teaching and learning practices. People currently working in higher education settings who have responsibility for or who aspire to leadership and management positions will find this course highly relevant to their career goals. Subjects include:

- Curriculum Design and Evaluation\*
- Introduction to Technology in Education
- Online Learning and Teaching
- Teaching for Diversity in Adult, Vocational and Higher Education\*
- The Global Challenge in Adult, Vocational and Higher Education\*

\*Required subjects for this specialisation.

Plus the following normally taken as Foundation education subjects:

- Innovation for Practitioners in Adult, Vocational and Higher Education
- Learning About Learning in Adult, Vocational and Higher Education

---

## INFORMATION AND COMMUNICATION TECHNOLOGY IN EDUCATION AND TRAINING

This specialisation is for graduates who wish to update and refine their skills in using modern technologies in teaching and learning. The program is suitable for those who already use ICT in their current roles and also for those who want to expand their career opportunities through exposure to eLearning technologies. Subjects include:

- Emerging Issues in Educational Technology
- Evaluation of Technology-Based Learning
- Instructional Strategies and Design
- Introduction to Technology in Education\*
- Multimedia and Interface Design
- Online Learning and Teaching

\*Required subject for this specialisation.

---

## INTERDISCIPLINARY STUDIES

Interdisciplinary Studies in Education is for educators seeking a flexible degree where areas of study can be tailored to their needs and interests. The program suits graduates and professionals who are looking to diversify or change their career direction. The program will also be of interest to graduates seeking a broad base in the field of education and training to underpin career goals in generalist education roles in fields such as staff training and development or policy and planning. This specialisation allows flexible studies across multiple areas of education. Students select five subjects from any of the specialisation options.

---

## LITERACY

The Master of Education (Literacy) is designed for current school teachers who wish to extend their understandings of the English curriculum in schools. The program is for current or aspiring head teachers or teachers in leadership positions who wish to promote and support literacy development in their schools. Subjects include:

- Current Issues in English Curriculum and Policy
- Expanding Literacy Repertoires
- Knowing About Language in Context
- Learning Environments for Literacy Development
- Literacy Assessment: Research, Policy and Practice
- Literature for Children and Young People

---

## SPECIAL EDUCATION

The Special Education specialisation is designed to provide professional training for qualified primary and secondary teachers to take up special education positions in schools. Non-school teachers who want to enhance their general knowledge and skills in special education for young people can also undertake the program. Subjects include:

- Approaches to Reading Difficulties: Theories and Strategies
- Assessment and Instruction of Individuals with High Support Needs
- Assessment and Instruction of Students with Learning Difficulties
- Education of Students with Autism Spectrum Disorders
- Giftedness in Special Populations
- Introduction to Inclusive Education: Strategies, Policies and Legislation\*
- Investigating Issues in Special Education/Inclusive Education\*
- Language and Communication Difficulties: Theory and Practice
- Models of Behaviour Management
- Teaching Gifted Children
- Technologies for Students with Special Needs

\*Either one of these subjects is required for this specialisation.

---

## TEACHING ENGLISH TO SPEAKERS OF OTHER LANGUAGES (TESOL)

---

### Master of Education (TESOL)

[go.uow.edu.au/med-tesol](http://go.uow.edu.au/med-tesol)

CRICOS 083833E

DURATION 1.5 years (72 cp)

STARTS Autumn (February), Spring (July)

#### ENTRY REQUIREMENTS

A recognised Bachelor degree in any area.

CREDIT Applicants with a specialisation in Education plus three years, teaching experience may be eligible for credit for 24 cp (one session).

IELTS Overall 6.5 (R:6, W:6, L:6, S:6)

---

### Graduate Diploma in TESOL

[go.uow.edu.au/gdip-tesol](http://go.uow.edu.au/gdip-tesol)

CRICOS 020206J

DURATION 1 year (48 cp)

STARTS Autumn (February), Spring (July)

#### ENTRY REQUIREMENT

Recognised Bachelor degree in any area.

IELTS Overall 6.5 (R:6, W:6, L:6, S:6)

---

### Graduate Certificate in TESOL

[go.uow.edu.au/gcert-tesol](http://go.uow.edu.au/gcert-tesol)

CRICOS 020199C

DURATION 6 months (24 cp)

STARTS Autumn

#### ENTRY REQUIREMENTS

A recognised Bachelor degree in any area.

IELTS Overall 6.5 (R:6, W:6, L:6, S:6)

The programs in TESOL provide specialist qualifications for those who want to teach English to speakers of other languages in Australia or internationally.

The Master of Education (TESOL) program is suitable for experienced teachers wishing to upgrade or refine their English as a Second Language (ESL) teaching skills and for people who are new to education and wish to pursue careers in English language teaching in the adult education sector such as working with private colleges or migrant services. Teaching accreditation by the Department of Education and Communities (DEC) is dependent upon subject choice.

The Graduate Diploma is accredited by DEC and is designed for TAFE or Vocational Education teachers who require an in-depth qualification by their employers. This program is also for experienced educators looking for a higher specialist qualification in ESL teaching. The course includes a supervised TESOL practicum.

The Graduate Certificate is a specialist qualification for people who want to teach English to speakers of other languages in Australia or overseas. The specialisation offers sound theoretical foundations and extensive practical skills that address the broader aspects of education and training. Current primary or high school teachers who want to gain additional ESL qualifications will also be interested in this qualification.

## COURSE STRUCTURE

The Master of Education with a specialisation in TESOL requires completion of 72 cp as per the structure below.

Foundation education subjects (18 cp), three of the following:

- Engaging Contexts of ESL Education
- Methodology in Second Language Teaching\*
- Pedagogical Grammar
- Professional Experience in TESOL\*
- Teaching English in International Contexts

Core subjects (18 cp):

- Introduction to Research and Inquiry
- Researching TESOL Perspectives and Practices
- Theories of Second Language Learning\*

Specialisation – at least four subjects (24 cp) from the following list:

- Assessing and Evaluating in TESOL Environments
- Engaging Contexts of ESL Education
- English in Specific Contexts
- English Pronunciation and Pedagogy
- Materials and Technology in Second Language Teaching
- Methodology in Second Language Teaching
- Oral Communication and Pedagogy
- Pedagogical Grammar
- Professional Experience in TESOL
- Second Language Literacy
- Teaching English in International Contexts
- Text and Context

Plus two electives (12 cp) from the above or other approved electives.

The Graduate Diploma in TESOL requires completion of eight subjects (48 cp). Students complete three core subjects (marked with an asterisk (\*)) in the Masters structure above with an additional five approved subjects.

The Graduate Certificate in TESOL requires four subjects (24 cp)—two of the core subjects from the Graduate Diploma plus two electives.

## ARTICULATION

Students completing the Graduate Certificate in TESOL are eligible to progress to either the Graduate Diploma in TESOL or the Master of Education (TESOL) with credit for the four subjects (24 cp) completed.

## Graduate Certificate in Educational Studies

[go.uow.edu.au/gcert-edstud](http://go.uow.edu.au/gcert-edstud)

CRICOS 083557J

DURATION 6 months (24 cp)

STARTS Autumn (February), Spring (July)

ENTRY REQUIREMENTS

Recognised Bachelor degree in any area.

IELTS Overall 6.5 (R:6, W:6, L:6, S:6)

This postgraduate qualification provides recent graduates of any discipline and interested professionals with a strong foundation in teaching, training, and educating staff and students in a range of industries. It broadens and refreshes your education skills, increasing your employment opportunities whether you are branching out into a new field or improving skills for your current career.

## COURSE STRUCTURE

Students complete four subjects:

- Current Issues in Education: Curriculum, Pedagogy and Policy
- Introduction to Assessment Principles and Practices
- Psychology for Educators

Plus one elective.

## ARTICULATION

Students successfully completing the Graduate Certificate in Educational Studies may progress to the Master of Education and receive credit for all four subjects completed.

## Graduate Certificate in Tertiary Teaching & Learning Practices

[go.uow.edu.au/gcert-ttlp](http://go.uow.edu.au/gcert-ttlp)

CRICOS 083558G

DURATION 6 months (24 cp)

STARTS Autumn (February), Spring (July)

ENTRY REQUIREMENTS

Recognised Bachelor degree in any area. Other qualifications combined with relevant professional experience may also be considered.

IELTS Overall 6.5 (R:6, W:6, L:6, S:6)

The Graduate Certificate in Tertiary Teaching and Learning Practices is for educators who are currently working in, or wish to work in the higher education sector. The program will enhance your career opportunities by upskilling your teaching practices in the flexible and diverse field of tertiary education.

Course Structure

- Innovation for Practitioners in Adult, Vocational and Higher Education
- Introduction to Assessment Principles and Practices
- Learning about Learning in Adult, Vocational and Higher Education

Plus either:

- Curriculum Design and Evaluation; or
- The Global Challenge in Adult, Vocational and Higher Education

## ARTICULATION

Students successfully completing the Graduate Certificate in Tertiary Teaching & Learning Practices may progress to the Master of Education and receive credit for all four subjects completed.



---

## Graduate Certificate in Health and Physical Education

[go.uow.edu.au/gcert-physed](http://go.uow.edu.au/gcert-physed)

CRICOS 055830G

DURATION 6 months (24 cp)

STARTS January Intake

### ENTRY REQUIREMENTS

Recognised three-year Bachelor degree, or other tertiary qualifications and/or appropriate professional experience.

IELTS Overall 6.5 (R:6, W:6, L:6, S:6)

---

This program is for qualified teachers who want to upgrade or refresh their knowledge in Health and Physical Education. The program is also a bridging course for tertiary graduates applying for the Master of Teaching (Primary) or Master of Teaching - who hold a degree that does not satisfy the Department of Education and Communities (DEC) requirements for teaching Health and Physical Education in schools.

## PRIMARY AND SECONDARY TEACHER EDUCATION

---

### Master of Teaching (Primary)

[go.uow.edu.au/mteach-prim](http://go.uow.edu.au/mteach-prim)

CRICOS 080833G

DURATION 2 years (96 cp)

STARTS Autumn (February), Spring (July)

### ENTRY REQUIREMENTS

Completed recognised Bachelor degree with an approved level of subjects relevant to Primary Education. For detailed information see [socialsciences.uow.edu.au/education/courses](http://socialsciences.uow.edu.au/education/courses)

IELTS Overall 7.5 (R:7, W:7, L:8, S:8)

---

### Master of Teaching (Secondary)

[go.uow.edu.au/mteach-sec](http://go.uow.edu.au/mteach-sec)

CRICOS 080834F

DURATION 2 years (96 cp)

STARTS Autumn (February), Spring (July)

### ENTRY REQUIREMENTS

Completed recognised Bachelor degree with an approved level of subjects relevant to Secondary Education. For detailed information see

[socialsciences.uow.edu.au/education/courses](http://socialsciences.uow.edu.au/education/courses)

IELTS Overall 7.5 (R:7, W:7, L:8, S:8)

---

The Master of Teaching degree is for Bachelor graduates from non-teaching courses who want to become primary or secondary teachers. On completion of this degree, you will obtain formal qualifications making you eligible to teach in public and private schools.

You will combine the practical and theoretical elements of teaching by engaging in professional aspects, including methods and professional practice.

The course provides students with more than 60 days of professional experience in local schools, with options to apply for 'out-of-area' (e.g. in rural NSW) and/or overseas professional experience (e.g. Thailand, China, Fiji).

In the final session of study, you will take part in our mentored interview program, which aims to help you prepare for your interview with the Department of Education and Communities (DEC).

---

## SECONDARY METHODS

Secondary methods currently offered are: Business Studies, Legal Studies, Geography, Modern History, English, Computer Technology: Information Systems, Drama, Modern Languages (including French), Mathematics, Science, Visual Art, Music, Physical and Health Education, Society and Culture.

## PROFESSIONAL RECOGNITION

The Master of Teaching (Primary) and Master of Teaching (Secondary) are accredited with the Board of Studies Teaching and Educational Standards (BOSTES) as professional teaching qualifications in NSW and across Australia. Students seeking work outside NSW, or internationally, or with some private schools (such as Catholic schools) are advised to check with potential employers for local requirements.

Students seeking work outside NSW are advised to check with potential employers and other teacher registration authorities for local requirements.

---

## IMPORTANT NOTE

Under the Child Protection (Prohibited Employment) Act 2012, all students enrolled in teacher education degrees are required to complete a Prohibited Employment Declaration before undertaking any professional experience. Pre-service teachers who participate in internship programs in NSW schools will be required to undergo a Working with Children Check.

---

# ENGINEERING

## Master of Engineering

[go.uow.edu.au/meng](http://go.uow.edu.au/meng)

CRICOS 083844B

DURATION 2 years (96 cp)

STARTS Autumn (February), Spring (July)

### ENTRY REQUIREMENTS

Recognised 4-year Bachelor of Engineering with an equivalent average mark of 60%.

**CREDIT** Applicants with a specialisation in the same area as their proposed Master of Engineering specialisation may apply for credit for 24 cp (one session). Applicants with a Bachelor Honours degree in the same area may apply for credit for 48 cp (1 year).

**IELTS** Overall 6.0 (R:6, W:6, L:6, S:6)

The Master of Engineering is a degree that delivers expert skills and applied competencies required for the professional engineer. It is designed to train and enhance professional practice, advance technical and specialist skills, and provide an opportunity to put theory into practice with applied projects and research. The degree also delivers communication, strategic and project management skills essential to the practising engineer. The following are available as specialisation studies within the degree:

- Asset Management
- Civil Engineering
- Computer Engineering
- Electrical Engineering
- Environmental Engineering
- Innovative Manufacturing
- Management
- Materials Engineering
- Mechanical Engineering
- Mechatronics Engineering
- Mining Engineering
- Telecommunications Engineering

## COURSE STRUCTURES

### SPECIALISATIONS IN CIVIL, ENVIRONMENTAL AND MINING ENGINEERING

Core subjects:

- Engineering Computing
- Engineering Project Management
- Engineering Research Methods
- Innovation and Design
- Professional Practice
- Sustainability for Engineers, Scientists and Professionals\*
- Dissertation (Research Project)

Plus subjects from the selected specialisation. The following subjects provide a guide to the subjects available. For further information see the Course Handbook at [uow.edu.au/handbook](http://uow.edu.au/handbook)

\*not required for Mining Engineering specialisation

### CIVIL ENGINEERING

- Advanced Computer Applications
- Advanced Design of Masonry Structures
- Advanced Foundation Engineering
- Advanced Soil Mechanics
- Construction Management
- Highway Materials
- Structural Design Based on Australian Standards

### ENVIRONMENTAL ENGINEERING

- Air and Noise Pollution Management
- Engineering Project Management
- Environmental Engineering Processes Design
- Industrial Waste Engineering and Cleaner Production
- Membrane Processes and Applications
- Site Contamination and Remediation Technologies
- Sustainable Energy Technologies
- Water Quality Engineering and Management

### MINING ENGINEERING

- Advanced Mine Safety
- Advanced Mineral Resource Estimation Methods
- Environmental Control in Mines
- Mine Planning and Development
- Mineral Valuation Risk Analysis
- Rock Mechanics
- Surface Mining Methods
- Underground Mining Methods



## SPECIALISATIONS IN ASSET MANAGEMENT, INNOVATIVE MANUFACTURING, MATERIALS, MECHANICAL AND MECHATRONIC ENGINEERING

Core subjects:

- Engineering Computing
- Engineering Project Management
- Engineering Research Methods
- Innovation and Design\*
- Professional Practice
- Strategic Management for Engineers and Technologists\*\*
- Dissertation (Research Project)

Plus subjects from the selected specialisation. The following subjects provide a guide to the subjects available. For further information see the Course Handbook at [uow.edu.au/handbook](http://uow.edu.au/handbook)

\*not required for Materials Engineering specialisation

\*\*not required for Asset Management specialisation

### ASSET MANAGEMENT SPECIALISATION

- Financial Management for Engineered Assets
- Life-Cycle and Risk Management
- Maintenance Requirements Analysis
- Modelling of Engineering Management Systems
- Project Implementation and Outsourcing
- Sustainability for Engineers, Scientists and Professionals
- Systems Reliability Engineering

Additional electives chosen from Engineering or the Sydney Business School subjects.

### INNOVATIVE MANUFACTURING

- Advanced Computer Control of Machines and Processes
- Advanced Manufacturing Processes
- Advanced Robotics
- Casting and Forming
- Energy Efficiency in Manufacturing and Process Industries
- Integrated Manufacturing Systems

Additional electives chosen from Materials or Engineering subjects.

### MATERIALS ENGINEERING

- Corrosion Wear and Fatigue
- Engineering Alloys
- Recent Developments in Materials
- Selection and Design of Materials
- Structural Analysis of Materials

Additional electives chosen from Materials or Engineering subjects.

### MECHANICAL ENGINEERING

- Advanced Manufacturing Processes
- Finite Element Techniques in Mechanical Engineering
- Integrated Manufacturing Systems
- Sustainable Transport and Engine Technology

Additional electives chosen from Materials or Engineering subjects.

### MECHATRONIC ENGINEERING

- Advanced Computer Control of Machines and Processes
- Advanced Robotics
- Intelligent Control
- Sustainability for Engineers, Scientists and Professionals

Additional electives chosen from the Mechanical and Electrical Engineering specialisations.

## SPECIALISATIONS IN COMPUTER, ELECTRICAL & TELECOMMUNICATIONS ENGINEERING

Core subjects:

- Advanced Laboratory
- Advanced Project
- Advanced Signals and Systems
- Communications and ICT Workplace Practice
- Engineering Design and Management
- Engineering Research Methods

### ELECTRICAL ENGINEERING

- Advanced Signals and Systems
- Identification and Optimal Control
- Renewable and Distributed Generation

Plus an additional three subjects selected from the electives from Electrical, Computer, Mechanical or Engineering subjects. For more information see the Course Handbook: [uow.edu.au/handbook](http://uow.edu.au/handbook)

### COMPUTER ENGINEERING

- Advanced Signals and Systems
- Image and Video Processing
- Internet Networking Protocols

Plus an additional three subjects selected from the electives from Electrical, Computer, Mechanical or Engineering subjects.

For further information see the Course Handbook at [uow.edu.au/handbook](http://uow.edu.au/handbook)

### TELECOMMUNICATIONS ENGINEERING

- Advanced Signals and Systems
- Identification and Optimal Control
- Mobile Networks

Plus an additional three subjects selected from the electives from Electrical, Computer, Mechanical or Engineering subjects. For more information see the Course Handbook: [uow.edu.au/handbook](http://uow.edu.au/handbook)

Students will then select a further three subjects from the list below based on advice and approval from the Course Coordinator. Subjects available include:

- Communication Systems
- Computer Controlled Systems
- Control Theory
- Data Communications
- Digital Signal Processing
- Embedded Systems
- Foundations in Electrical Energy Utilisation
- Intelligent Control
- Microcontroller Architecture and Applications
- Multimedia Signal Processing
- Operations Research
- Power Electronics and Drives
- Power Engineering 2
- Power System Analysis
- Queuing Theory and Optimization
- Robotics and Flexible Automation
- Wireless Communication Systems

---

## Master of Engineering Management

[go.uow.edu.au/memgmt](http://go.uow.edu.au/memgmt)

CRICOS 051350M

DURATION 1 year (48 cp)

STARTS Autumn (February), Spring (July)

### ENTRY REQUIREMENTS

Recognised 4-year Bachelor of Engineering with an equivalent average mark of 60%.

IELTS Overall 6.0 (R:6, W:6, L:6, S:6)

---

The Master of Engineering Management (48 Credit Point) degree provides a strong grounding in modern management thinking that is applicable to the engineering and manufacturing industries. Graduates will be able to work in teams and with managers from other disciplines, including finance, human resources and management. They will be well equipped to advance their careers into senior managerial positions.

## COURSE STRUCTURE

Students are required to complete the six core subjects and two electives as below.

Core subjects:

- Engineering Logistics
- Innovation and Design
- Engineering Project Management
- Modelling of Engineering Management Systems
- Strategic Management for Engineers and Technologists
- Financial Management for Engineered Assets

And two electives from Engineering or Sydney Business School subjects.

---

## PROFESSIONAL PRACTICE SUBJECT ENGG942

Professional Practice is designed to provide students with skills and knowledge to prepare them for the Australian engineering workplace.

Engineering workplace practices, regulatory requirements and recruitment processes are all covered in this subject, as well as communication, marketing and career development, to support graduates seeking employment.

Topics include:

- Australian workplace culture and practices
- Communication skills for the job search and recruitment processes in the Australian context
- Engineering regulatory environment, including OHS and site visits
- Intercultural communication skills

Students in Electrical, Computer and Telecommunications Engineering specialisations take Communication and ICT Workplace Practice instead of ENGG942.

---



# HEALTH AND MEDICINE

## Bachelor of Medicine & Bachelor of Surgery

[go.uow.edu.au/mbbs](http://go.uow.edu.au/mbbs)

CRICOS 054941G

DURATION 4 years

STARTS January

### ENTRY REQUIREMENTS

This is a Graduate Medicine program therefore, applicants must have completed a Bachelor Degree with a minimum GPA of 5.0 on a 7-point scale or 2.8 on a 4-point scale. The completed degree can be in any discipline but applicants must have completed it within 10 years of the course commencement.

Students must also sit the Graduate Australian Medical School Admissions Test (GAMSAT), an independently developed exam designed to help graduate medical schools select candidates. International students may also apply with an appropriate score in the Medical College Admission Test (MCAT).

All students are required to prepare and submit a portfolio. Details of the application process including entry and portfolio requirements can be found at [smah.uow.edu.au/medicine/future/mbbs](http://smah.uow.edu.au/medicine/future/mbbs)

IELTS Overall 7.0 (R:7, W:7, L:7, S:7)

Students spend significant time during their training in long-term clinical placements with doctors in regional and rural facilities, developing an understanding of what it means to practise medicine in these areas.

These clinical experiences reflect the realities of medicine in regional, rural and remote communities, and the curriculum presents 'problems' that students must solve in the context of these places.

While the focus is on training doctors to work in non-urban areas, graduates receive a broad-based training that ensures they can pursue any career in medicine, including all the medical specialisations.

## Master of Clinical Exercise Physiology

[go.uow.edu.au/mclinphys](http://go.uow.edu.au/mclinphys)

CRICOS 083831G

DURATION 1.5 years (72 cp)

STARTS Autumn (February)

### ENTRY REQUIREMENTS

A recognised Bachelor degree in Exercise Science of at least three years' duration, or have ESSA approved Graduate Entry status. Applicants must also have acquired a minimum of 140 hours of supervised clinical placement with healthy populations. Submission of a Supplementary Information form, with 3 referees, reports and a personal statement is also required. Applications must be received by 30 September.

IELTS Overall 6.5 (R:6.5, W:6.5, L:6.5, S:6.5)

The Master of Clinical Exercise Physiology aims to produce professional Exercise Physiologists who can utilise exercise to prevent and rehabilitate those with chronic disease and injury in the broader community.

## COURSE STRUCTURE

### YEAR 1

- Clinical Exercise Physiology (Autumn)
- Clinical Practicum (Spring)
- Advanced Workplace Injury Management for Exercise Physiologists (Spring)

### YEAR 2

- Four 6-credit point electives from postgraduate subjects in Business and/or Work Health & Safety (Autumn)

## PROFESSIONAL RECOGNITION

Graduates are eligible to apply for accreditation as an exercise physiologist with Exercise and Sports Science Australia (ESSA).

## Master of Health Leadership & Management

[go.uow.edu.au/mhlthleadmgmt](http://go.uow.edu.au/mhlthleadmgmt)

CRICOS 083834D

DURATION 1.5 years (72 cp)

STARTS Autumn (February), Spring (July)

### ENTRY REQUIREMENTS

A relevant Bachelor degree. Applicants with other combinations of acceptable qualifications and professional experience may be considered.

IELTS Overall 6.5 (R:6, W:6, L:6, S:6)

This flexible course is designed for practising health professionals seeking to develop their leadership and management skills. It allows students to tailor the program to suit their professional development requirements. The program delivers the following: the leadership skills required to be an effective manager in the context of health care; the skills to critically evaluate and incorporate reflective practice in a leadership role; and the ability to analyse and demonstrate the values of coaching and mentoring skills.

## COURSE STRUCTURE

Core subjects (48 cp) including: reflection on practice; health management; health leadership; coaching skills; subjects in practice development; health research skills; and promoting clinical excellence.

Plus one of the following options:

- Special Topic (12 cp) and two elective Nursing subjects (12 cp);
- Minor Thesis (24 cp), restricted to those achieving a WAM of 70% and with Course Coordinator approval.

---

## Master of Nutrition and Dietetics

[go.uow.edu.au/msci-nutdiet](http://go.uow.edu.au/msci-nutdiet)

CRICOS 007054G

DURATION 2 years (96 cp)

STARTS Autumn (February)

### ENTRY REQUIREMENTS

A Bachelor degree of at least 3 years' duration from a recognised tertiary institution is required for entry. The degree must incorporate at least 50% bioscience, including subjects such as biology, chemistry, physiology and biochemistry in the first two years of study. There must be a minimum of 15% of a full-time year load each of biochemistry and physiology at second year level or higher (typically two subjects of each including laboratory practicals). Metabolic biochemistry and systems physiology are essential. In addition, nutrition science subjects (equivalent to at least 50% of a full-time year load) must be completed across the degree (typically four subjects across the degree). Applicants must also provide two referee reports, a Supplementary Information form and a personal statement. Applications must be received by 30 September.

IELTS Overall 6.5 (R:6.5, W:6.5, L:6.5, S:6.5)

---

The course is designed to meet the core fields of competency as defined by the profession, including the key areas of professional practice, improving nutrition outcomes for individuals, groups and communities, critical thinking and evidence based practice and collaboration with stakeholders. Within the program, these are applied to the practice of clinical dietetics (individual case management), community and public health nutrition, and food service systems management.

## COURSE STRUCTURE

---

### YEAR 1

- Communication in Health Care Practice
  - Community and Public Health Nutrition
  - Dietetics 1 & 2
  - Food Service and Dietetics Management
  - Nutrients and Metabolism
- 

### YEAR 2

- Practical Studies in Nutrition and Dietetics
  - Research Project in Nutrition and Dietetics
- 

## PROFESSIONAL RECOGNITION

The Master of Nutrition and Dietetics has full accreditation with the Dietitians Association of Australia (DAA), making all graduates eligible for the credential of Accredited Practising Dietitian (APD) and Accredited Nutritionist (AN).

---

## Master of Nursing

[go.uow.edu.au/mnurs](http://go.uow.edu.au/mnurs)

CRICOS 083832F

DURATION 1.5 years (72 cp)

STARTS Autumn (February), Spring (July)

### ENTRY REQUIREMENTS

Recognised Bachelor degree in Nursing, or a recognised Graduate Certificate in Nursing.

IELTS Overall 6.5 (R:6, W:6, L:6, S:6))

---

## Graduate Certificate in Nursing

[go.uow.edu.au/gcert-nurs](http://go.uow.edu.au/gcert-nurs)

CRICOS 065469C

DURATION 6 months (24 cp)

STARTS Autumn (February), Spring (July)

### ENTRY REQUIREMENTS

Recognised Bachelor degree in Nursing, or qualifications to practice as a Registered Nurse or equivalent.

IELTS Overall 6.5 (R:6, W:6, L:6, S:6)

---

These programs are designed as professional development programs for nurses and to prepare them for leadership roles in nursing and the health care system.

## COURSE STRUCTURE

The Masters program comprises core subjects including: Reflection on Practice\*, Legal and Professional Issues\*, Developments in Nursing Care\*, Essential Skills for Health Researchers\*, Managing Change - Quality Improvement, Reflection in Practice, Effective Leadership in Health and Tools for Practice Development.

Plus one of the following options:

- Minor thesis/project (24 cp); or
- Special Project (12 cp) and 2 x 6 credit point electives from Nursing 900-level subjects.

The Graduate Certificate comprises the four subjects identified with an asterisk (\*) from the Masters program above.

---

## Master of Nursing (Mental Health)

[go.uow.edu.au/mnurs-menthlth](http://go.uow.edu.au/mnurs-menthlth)

CRICOS 083835C

DURATION 1.5 years (72 cp)

STARTS Autumn (February), Spring (July)

### ENTRY REQUIREMENTS

Recognised Bachelor degree or Graduate Certificate in Mental Health Nursing and qualifications to practise as a Registered Nurse or equivalent. Students must have experience or be currently working in a mental health setting.

IELTS Overall 6.5 (R:6, W:6, L:6, S:6)

---

This course is designed for both practitioners commencing in the specialty of mental health nursing and experienced mental health and drug and alcohol nurses.

Students will cover a range of subjects in the areas of clinical principles and practice, psychosocial rehabilitation, assessment and diagnosis in mental health, drug and alcohol substance use, health management, research skills and a special project.



## Master of Science (Dementia Care)

[go.uow.edu.au/msci-demcare](http://go.uow.edu.au/msci-demcare)

CRICOS 084856A

DURATION 1.5 years (72 cp)

STARTS Autumn (February), Spring (July)

### ENTRY REQUIREMENTS

Recognised Bachelor degree in a health-related discipline, or equivalent.

IELTS Overall 6.5 (R:6, W:6, L:6, S:6)

This course is a clinically based program that prepares practitioners for advanced professional practice in the specialist field of dementia. Graduates will have the ability to critically review the health and wellbeing of people with dementia, review social policy and its impact on the provision of dementia care, and develop advocacy skills in sectors relevant to dementia care.

Core subjects include:

Psychoactive Substance and Mental Health, Reflection on Practice, Dementia Care Across Settings, Policy and Practice in the Care of Older People, Rehabilitation: Concepts and Practice, Advancements in Dementia Care, Tools for Practice Development, Facilitation and Education Skills for Practice Development.

Plus one of the following options:

- Minor thesis/project (24 cp); or
- Special Project (12 cp) and 2 x 6 credit point electives from Nursing subjects

## Master of Science (Gerontology & Rehabilitation Studies)

[go.uow.edu.au/msci-grs](http://go.uow.edu.au/msci-grs)

CRICOS 083836B

DURATION 1.5 years (72 cp)

STARTS Autumn (February), Spring (July)

### ENTRY REQUIREMENTS

A Bachelor degree or Graduate Certificate in a related discipline. Health professionals holding other qualifications may be considered.

IELTS Overall 6.5 (R:6, W:6, L:6, S:6)

This course is designed to provide opportunities for practitioners working with older people or clients with rehabilitation needs.

Graduates are able to critically review the health and wellbeing of older people, review social policy in aged care, and develop advocacy skills to work with users, carers and colleagues in the health, social care and voluntary sectors.

Leadership and research skills gained in this course prepare candidates for career progression into senior clinical, management, teaching, and research roles.

Students have the option of completing a 24 cp minor thesis (entry restricted to those achieving a 70% average and obtaining Course Coordinator approval) or a special project (12 cp) as part of the course.

## GAIN TWO QUALIFICATIONS OVER A TWO-YEAR STUDY PROGRAM

Through approved articulation arrangements between courses offered by the Faculty of Science, Medicine and Health, you can complete two postgraduate coursework degrees over a two-year period. The following details the articulation arrangements between the Graduate Certificate in Nursing and approved Masters courses.

Graduate Certificate	Articulation into Masters course
Graduate Certificate in Nursing Duration 6 months 24 credit points	Master of Science (Dementia Care) Duration 1.5 years 72 credit points
Graduate Certificate in Nursing Duration 6 months 24 credit points	Master of Science (Gerontology and Rehabilitation Studies) Duration 1.5 years 72 credit points
Graduate Certificate in Nursing Duration 6 months 24 credit points	Master of Health Leadership and Management Duration 1.5 years 72 credit points
Graduate Certificate in Nursing Duration 6 months 24 credit points	Master of Nursing (Mental Health) Duration 1.5 years 72 credit points

## ADDITIONAL ENTRY REQUIREMENT FOR SELECTED COURSES IN HEALTH AND MEDICINE

The NSW Health Department requires all students undertaking courses with clinical placements to undergo a criminal record clearance prior to employment or placement in the NSW Health System.

This clearance will be conducted by the NSW Police Service and will be coordinated by NSW Health following enrolment.

International students are required to provide an official criminal record clearance, in English, from their home country prior to their arrival in Australia.

Once enrolled, nursing students will be required to determine their immunity status for a number of infectious diseases. Students may need to undertake a course of vaccinations.

# INTERNATIONAL STUDIES

## Master of International Studies

[go.uow.edu.au/mistud](http://go.uow.edu.au/mistud)

CRICOS 083827C

DURATION 1.5 years (72 cp)

STARTS Autumn (February), Spring (July)

### ENTRY REQUIREMENTS

Recognised Bachelor degree with a specialisation or minor sequence in politics, history, global studies, sociology, law, economics or related social science discipline. Applicants with other qualifications with relevant professional experience may be considered.

IELTS Overall 6.5 (R:6, W:6, L:6, S:6)

The Master of International Studies will give you the skills to start a career in the public sector, in internationally-focused private sector organisations, non-governmental organisations and, of course, in international organisations.

The course seeks to explain, debate, critically analyse and apply key concepts in international studies to give graduates a strong understanding of the dynamics of internationalisation, globalisation, development and social change.

Core coursework subjects will teach you the politics of international relations, social change and development; or choose elective coursework subjects in other areas like international law, labour and migration, economic relations and public policy.

Training in research methods and design is also core and you will then complete your own independent research projects.

## COURSE STRUCTURE

The course comprises three core subjects, an advanced topic or thesis, and 4–5 electives.

Core subjects:

- Politics of International Relations
- Research Methods
- Social Change and Development

Plus either:

- Advanced Topics in International Studies, with four electives; or
- Thesis in International Studies, with five electives

### Elective Schedule One:

- Comparative Public Policy
- Globalisation and Citizenship
- International Economic Relations
- International Law and Diplomacy
- Internship in International Studies
- Labour and Migration
- Transforming Asia: Trends, Issues and Problems

### Elective Schedule Two (a maximum of three subjects can be taken from this list):

- Conflict, Peace and Security
- Global Technology and Cultural Transformation
- New Social Movements
- Politics in the USA



# INFORMATION & COMMUNICATION TECHNOLOGY

## Master of Computer Science

[go.uow.edu.au/mcompsci](http://go.uow.edu.au/mcompsci)

CRICOS 083839K

DURATION 2 years (96 cp)

STARTS Autumn (February), Spring (July)

### ENTRY REQUIREMENTS

Recognised Bachelor degree in computer science, software engineering, computer engineering, information technology or a closely related field, with an equivalent average mark of 60%.

**CREDIT** Applicants with a Bachelor in computer science may apply for credit for 24 cp (one session). Applicants with a Bachelor Honours degree in computer science may apply for credit for 48 cp (1 year).

**IELTS** Overall 6.0 (R:6, W:6, L:6, S:6)

Technology touches every part of our daily lives, and UOW continues a long-history of providing technically excellent graduates to meet industry demand with the Master of Computer Science. This degree gives graduates the ability to solve complex real world problems by integrating computer science methods with effective management strategies and by developing and deploying computer applications. Students will be able to put theory into practice with an individual capstone project.

## COURSE STRUCTURE

### YEAR 1

Four foundation subjects (24 cp) from the following options depending on your background in computer science:

- Algorithms and Data Structures
- Object and Generic Programming in C++ or Java Programming & Applications
- Systems Development or Software Development Methods & Tools
- Database Systems or Systems Security or Human Computer Interaction

Core subjects (24 cp):

- Contemporary Topics in Computer Science
- Research Methods

Plus two electives from the Computer Science Graduate Subjects List.

### YEAR 2

- Research Project or Professional Project (12 cp)\*
- Four subjects (24 cp) from one of the specialisations listed below to graduate with a specialisation.
- Plus a further two electives (12 cp) from any of the subjects listed below, and approved by the Course Coordinator.

\*students with a mark 75% or above in Research Methods may enrol in the Research Project, all other students enrol in the Professional Project.

## SPECIALISATIONS

### INTELLIGENT SYSTEMS

- Computational Intelligence
- Data Mining
- Formal Methods in Software Engineering
- Perception and Planning
- Reasoning and Learning

### MULTIMEDIA AND VISUAL PROCESSING

- Computational Intelligence
- Computer Vision
- Multimedia Content Management
- Pattern Recognition
- Perception and Planning
- Reasoning and Learning
- Visualisation

### NETWORK AND INFORMATION SECURITY

- Advanced Computer Security
- Advanced Network Security
- Coding for Secure Communication
- Mathematics for Cryptography
- Topics in Applying Information Security

### SOFTWARE ENGINEERING

- Formal Methods in Software Engineering
- Service-Oriented Software Engineering
- Software Engineering Requirements and Specification
- Software Testing and Analysis

## PROFESSIONAL RECOGNITION

This degree is being accredited by the Australian Computer Society (ACS) as meeting the requirements for membership at the Professional level. ACS has global reciprocal agreements, recognising your degree internationally.

## Master of Information & Communication Technology Advanced

[go.uow.edu.au/mict-adv](http://go.uow.edu.au/mict-adv)

CRICOS 067074F

DURATION 2 years (96 cp)

STARTS Autumn (February), Spring (July)

### ENTRY REQUIREMENTS

Recognised Bachelor degree specialising in information systems, information technology, computer science or related area, with an equivalent average mark of 65%.

**CREDIT** Applicants with a Bachelor in information technology may apply for credit for 24 cp (one session). Applicants with a Bachelor Honours degree in information technology may apply for credit for 48 cp (1 year).

**IELTS** Overall 6.0 (R:6, W:6, L:6, S:6)

The Master of Information and Communication Technology Advanced covers the deployment, maintenance, management and organisation of Information Technology (IT) in business. Graduates will deepen their understanding and experience in technology analysis and deployment, develop skills in the economic, regulatory and socio-technical issues that arise in the implementation and application of IT, and how to effectively manage these issues.

With the widespread deployment of technology in all businesses, IT graduates need to be trained in marketing, business intelligence, corporate government, and change management. This degree allows graduates to train in all aspects of current business operations, and round out their Master with an individual capstone project.

## COURSE STRUCTURE

Core subjects (36 cp):

- Enterprise Architecture Design
- Information Systems and Strategies
- Professional Practice and Research Project
- Project and Change Management
- Systems Integration

Plus one of the following options:

- Single specialisation of four subjects (24 cp) from the options below plus six electives (36 cp); or
- Two specialised studies of four subjects in each listed specialisation (2 x 24 cp) plus two electives (12 cp).

## SPECIALISATIONS

### ICT STRATEGIC PLANNING

- Business Intelligence
- Information Design and Content Management
- IT Governance
- Organisational Issues and IT
- Strategic Network Design

### INFORMATION SYSTEMS DEVELOPMENT

- Information Design and Content Management
- Information System Development
- eBusiness Technologies
- Web Services
- Service Oriented Architecture
- Formal Methods in Software Engineering
- Software Engineering Requirements and Specifications

### ENTERPRISE NETWORKING

- eBusiness Technologies
- IT Security and Risk Management
- IT-enabled Supply Chain Management
- Strategic Network Design
- Web Services and Service Oriented Architecture

### HEALTH INFORMATICS

- Business Intelligence
- Concepts and Issues in Healthcare Management
- Information Design and Content Management
- Introduction to Health Informatics

## PROFESSIONAL RECOGNITION

The Master of Information Technology Advanced is being accredited by the Australian Computer Society (ACS) as meeting the requirements for membership at the Professional level.

## Master of Information Technology

[go.uow.edu.au/mit](http://go.uow.edu.au/mit)

CRICOS 083840F

DURATION 2 years (96 cp)

STARTS Autumn (February), Spring (July)

### ENTRY REQUIREMENTS

Recognised Bachelor degree with an equivalent average mark of 60% in any area. Applicants with other qualifications and substantial relevant professional experience may be considered.

**IELTS** Overall 6.0 (R:6, W:6, L:6, S:6)

The purpose of the Master of Information Technology is to develop an in-depth study of the organisational, economic, regulatory and socio-technical issues that arise in the implementation of IT in business and government, and how to effectively manage those issues. It is suitable for those without an IT-background seeking to develop the fundamental skills required to work in the sector, or to undertake a management role in which an understanding of IT implementation is essential.

## COURSE STRUCTURE

Core subjects (36 cp):

- Database Management Systems
- Information Systems & Strategy
- Professional Practice or Research Project
- Programming Concepts
- System Analysis & Design

Plus either:

- To graduate with a specialisation—(24 cp) and six electives (36 cp) from the approved schedule of electives; or
- To graduate without a specialisation—10 electives (60 cp) from the approved schedule of electives.



## SPECIALISATIONS

The following specialisations are available in the Master of Information Technology. A specialisation comprises four subjects chosen from the list below:

### IT STRATEGIC MANAGEMENT

Two of the following subjects:

- Business Intelligence and Knowledge
- IT Governance
- IT-enabled Supply Chain Management
- Organisational Issues and IT

Plus two from the following:

- Accounting for Managers
- International Business Strategy
- Internet Applications for Marketing
- Managing in Multinational Companies
- Managing People in Organisations
- Marketing Management
- Quality in Management
- Statistics for Decision Makers

### ENTERPRISE NETWORKING

- Corporate Network Management
- eBusiness Technologies
- IT Security and Risk Management
- Strategic Network Design
- Web Services and Service Oriented Architecture

### INFORMATION SYSTEMS DEVELOPMENT

- Advanced Web Program
- Enterprise Architecture Design
- Information Design and Content Management
- Systems Development Methodologies
- Systems Integration
- Web Services and Service Oriented Architecture

## PROFESSIONAL RECOGNITION

This is a new course for 2015 and the course is currently undergoing accreditation by the Australian Computer Society (ACS) for membership at the Professional level.

## Master of Health Informatics

[go.uow.edu.au/mhlthinfo](http://go.uow.edu.au/mhlthinfo)

CRICOS 0838288

DURATION 2 years (96 cp)

STARTS Autumn (February), Spring (July)

### ENTRY REQUIREMENTS

Recognised Bachelor degree with an equivalent average mark of 60% in an area related to either information technology or health.

IELTS Overall 6.0 (R:6, W:6, L:6, S:6)

Health services in Australia and around the world are becoming increasingly reliant on IT and e-health. This degree is designed to upgrade IT professionals who wish to specialise in health informatics or provide health professionals with training in IT for application in the health industry. The program aims to equip graduates with an understanding of the health sector and of the application of relevant systems to that sector. The degree enables graduates to take on leadership roles in public & private hospitals, and with health system vendors, telecommunications providers and pharmaceutical companies.

## COURSE STRUCTURE

Four core subjects (24 cp):

- Concepts and Issues in Healthcare Computing
- Introduction to Health Informatics
- Statistics in Health Research
- Information Design & Content Management

Plus a capstone Professional Practice and Research Project (12 cp)

Graduates from a Health background will take four subjects (24 cp) from the IT stream outlined below:

- Database Management Systems
- System Analysis and Design
- Programming Concepts
- Information Systems & Strategic Planning

Graduates from an Information Technology background will take three subjects (18 cp) from the Health stream outlined below:

- Social Determinants of Health
- Health Promotion
- Health Policy
- Contemporary Public Health Issues

All students will then complete two Advanced IT subjects, with the remaining subjects taken as electives.

## PROFESSIONAL RECOGNITION

The revised structure for the Master of Health Informatics in 2015 is currently undergoing accreditation by the Australian Computer Society (ACS) for the membership at the Professional level.

---

## Master of Information Technology Management

[go.uow.edu.au/minfotechmgmt](http://go.uow.edu.au/minfotechmgmt)

CRICOS 084770G

DURATION 1.5 years (72 cp)

STARTS Autumn (February), Spring (July)

### ENTRY REQUIREMENTS

Recognised Bachelor degree specialising in information systems, information technology, computer science or related areas, with an equivalent average mark of 60%.

CREDIT Applicants with a Bachelor Honours degree in information technology may apply for credit for 24 cp (1 session).

IELTS Overall 6.0 (R:6, W:6, L:6, S:6)

---

This program is designed to prepare professionals to integrate and manage the information technology and systems in organisations. The program covers both IT strategic planning and implementation, and organisational management. Graduates will acquire an in-depth understanding of managing projects, people, knowledge and technologies in an organisational context.

## COURSE STRUCTURE

Core subjects (48 cp):

- Innovation and Design
- IT Governance
- IT Security and Risk Management
- Information Systems and Strategy
- Managing People in Multinational Organisations
- Project and Change Management
- Professional Practice and Research Project

At least two subjects (12 cp) from:

- Engineering Project Management
- Enterprise Architecture Design
- Information Design and Content Management
- Information Systems for Project Managers
- Organisational Issues & Information Technology
- Strategic Management for Engineers and Technologists
- Systems Integration

Two additional electives (12 cp) may be taken from:

- Accounting for Managers
- International Business Strategy
- Internet Application for Marketing
- Managing in Multinational Companies
- Procurement Management
- Quality in Management
- Supply Chain Management

## PROFESSIONAL RECOGNITION

The revised structure for the Master of Information Technology Management in 2015 is currently undergoing accreditation by the Australian Computer Society (ACS) for membership at the Professional level.

# LAW, OCEAN LAW & POLICY

## Master of Fisheries Policy

[go.uow.edu.au/mfishpol](http://go.uow.edu.au/mfishpol)

CRICOS 068542G

DURATION 1 year (48 cp)

STARTS Autumn (February)–Spring (July) available with prior approval.

### ENTRY REQUIREMENTS

Recognised Bachelor Honours degree or a Graduate Certificate in a relevant area; or Bachelor degree with relevant experience.

IELTS Overall 6.5 (R:6, W:6, L:6, S:6)

The Master of Fisheries Policy addresses international, regional and national frameworks for sustainable fisheries management and provides a broad understanding of the law of the sea and the issues facing the fisheries sector, including fisheries management, international fisheries law, monitoring, control and surveillance (MCS), fish trade and regulatory compliance. The program is designed for fisheries and environmental policy officers, mid-level managers and enforcement officers from governments, and regional and international organisations.

## COURSE STRUCTURE

The program comprises six compulsory subjects of 8 credit points each.

- Fisheries and Development
- Fisheries Management
- Integrated Monitoring, Control and Surveillance
- International Fish Trade
- International Fisheries Law
- Law of the Sea

## Master of Maritime Studies

[go.uow.edu.au/mmarstud](http://go.uow.edu.au/mmarstud)

CRICOS 042637D

DURATION 1 year (48 cp)

STARTS Autumn (February)–Spring (July) available with prior approval.

### ENTRY REQUIREMENTS

Recognised Bachelor Honours degree or Graduate Certificate in a relevant area; or Bachelor degree with relevant experience.

IELTS Overall 6.5 (R:6, W:6, L:6, S:6)

Maritime Studies deals with policy, law and security issues related to the world's oceans. It addresses these issues in the contexts of trade, living and non-living marine resources, the sea as an important natural environment, and international political tensions and cooperation. You will study maritime enforcement, maritime security threats and solutions, marine environmental law, regulation of shipping and marine resources management. You will learn to analyse the legal, political and operational factors that contribute to the development of the law of the sea and maritime policy and devise solutions to gaps in legal and policy frameworks. This degree is designed to meet the early or mid-career education requirements of maritime professionals working in a policy or operational context, or those who intend to pursue a career in a maritime or related field.

## COURSE STRUCTURE

Students must take the following compulsory subjects:

- Law of the Sea
- Research Project in Maritime Studies

Together with four subjects from the list below:

- Comparative Oceans Policy
- Contemporary Maritime Issues in the Asia–Pacific Region
- Fisheries Management
- Integrated Marine and Coastal Management
- Integrated Monitoring, Control and Surveillance
- International Fisheries Law
- International Marine Environmental Law
- Legal Regulation of Shipping
- Maritime Regulation and Enforcement
- Maritime Security Law and Policy
- Minor Thesis in Maritime Studies (16 cp)
- Selected Topic in Maritime Studies
- Strategy and Sea Power



---

## Master of Maritime Policy

[go.uow.edu.au/mmarpol](http://go.uow.edu.au/mmarpol)

CRICOS 017740B

DURATION 1 year (48 cp)

STARTS Autumn (February)

### ENTRY REQUIREMENTS

Recognised Bachelor Honours degree or Graduate Certificate in a relevant area; or Bachelor degree with relevant experience.

IELTS Overall 6.5 (R:6, W:6, L:6, S:6)

---

Maritime Policy deals with policy, law and security issues related to the world's oceans. It addresses these issues in the contexts of the importance of the sea for trade, a source of both living and non-living marine resources, as an important natural environment, and as both a source of international political tensions and cooperation. The Master of Maritime Policy degree is designed to meet the early or mid-career education requirements of maritime professionals working in a policy or operational context, or those who intend to pursue a career in a maritime or related field.

## COURSE STRUCTURE

Students must take the following compulsory subjects:

- Law of the Sea
- Legal Regulation of Shipping

Together with four subjects from the list below:

- Comparative Oceans Policy
- Contemporary Maritime Issues in the Asia – Pacific Region
- Integrated Marine and Coastal Management
- Integrated Monitoring, Control and Surveillance
- International Fisheries Law
- International Marine Environmental Law
- Maritime Regulation and Enforcement
- Maritime Security Law and Policy
- Minor Thesis in Maritime Studies (16cp)
- Research Project in Maritime Studies
- Selected Topic in Maritime Studies

---

## Graduate Certificate in Maritime Studies

[go.uow.edu.au/gcert-marstud](http://go.uow.edu.au/gcert-marstud)

CRICOS 080831J

DURATION 6 months

STARTS Autumn (February)–Spring (July) available with prior approval

### ENTRY REQUIREMENTS

Recognised Bachelor degree or equivalent, or an appropriate professional background.

IELTS Overall 6.5 (R:6, W:6, L:6, S:6)

---

The Graduate Certificate in Maritime Studies is designed to meet the early or mid-career education requirements of maritime professionals working in a policy or operational context, or those who intend to pursue a career in a maritime or related field. This degree provides a broad understanding of the law of the sea, ocean governance and maritime security. You will gain knowledge of areas such as maritime enforcement, maritime security threats and solutions, marine environmental law, regulation of shipping and marine resources management. Successful completion of the Graduate Certificate allows articulation into the following coursework Masters degrees:

- Master of Maritime Studies
- Master of Maritime Policy
- Master of Fisheries Policy

## COURSE STRUCTURE

Compulsory subject:

- Law of the Sea

Together with two subjects from the list below:

- Comparative Oceans Policy
- Contemporary Maritime Issues in the Asia – Pacific Region
- Fisheries and Development
- Fisheries Management
- Integrated Marine and Coastal Management
- Integrated Monitoring, Control and Surveillance
- International Fisheries Law
- International Fish Trade
- International Marine Environmental Law
- Legal Regulation of Shipping
- Maritime Regulation and Enforcement
- Maritime Security Law and Policy
- Minor Thesis in Maritime Studies (16 cp)
- Research Project in Maritime Studies
- Strategy and Sea Power
- Selected Topic in Maritime Studies

---

## MASTER OF LAWS (CRIMINAL PRACTICE)

A Master of Laws (Criminal Practice) program is available (CRICOS 067078B), with content reflecting the Australian jurisdiction. As a result, the course is suitable only for applicants who are practising law in comparable jurisdictions, such as New Zealand, Papua New Guinea, Hong Kong, Malaysia and Singapore.

If you are considering this course please contact [futurestudents@uow.edu.au](mailto:futurestudents@uow.edu.au) for advice as to whether the course is suitable for your professional development. Current course and subject information is available at [go.uow.edu.au/mlaws-crimpros](http://go.uow.edu.au/mlaws-crimpros)

---

# MATHEMATICS AND STATISTICS

## Master of Financial Mathematics

[go.uow.edu.au/mfinmaths](http://go.uow.edu.au/mfinmaths)

CRICOS 083829A

DURATION 2 years (96 cp)

STARTS Autumn (February), Spring (July)

### ENTRY REQUIREMENTS

Recognised Bachelor degree with at least one year of mathematics or statistics and an equivalent average mark of 60%.

**CREDIT** Applicants with a Bachelor in mathematics or statistics may apply for credit for 24 cp (one session). Applicants with a Bachelor Honours degree in mathematics or statistics may apply for credit for 48 cp (1 year).

**IELTS** Overall 6.0 (R:6, W:6, L:6, S:6)

This Masters program provides training in quantitative financial analysis and a range of analytical, statistical, computational and modelling skills needed for the formulation, implementation and evaluation of models in the financial sector to structure transactions, evaluate financial derivatives, manage risk and construct investment strategies.

## COURSE STRUCTURE

### YEAR 1

- Differential Equations 2
- Estimation and Hypothesis Testing
- Investment Management or Portfolio Management or Portfolio Simulation
- Managerial Finance
- Multivariate and Vector Calculus
- Probability and Random Variables
- Research Methods

Plus one elective.

### YEAR 2

- Advanced Managerial Finance
- Financial Calculus (Enhanced)
- Linear and Generalised Linear Models (Enhanced)
- Major Project
- Numerical Methods in Finance
- Practitioners' Seminars
- Stochastic Methods in Finance

Plus one elective.

## PROFESSIONAL RECOGNITION

This program satisfies the education requirements for Senior Associate membership of the Financial Services Institute of Australasia (FINSIA).

## Master of Mathematics

[go.uow.edu.au/mmath](http://go.uow.edu.au/mmath)

CRICOS 084776A

DURATION 2 years (96 cp)

STARTS Autumn (February), Spring (July)

### ENTRY REQUIREMENTS

Recognised Bachelor degree with at least one year of mathematics or statistics and an equivalent average mark of 60%.

**CREDIT** Applicants with a Bachelor in mathematics or statistics may apply for credit for 24 cp (one session). Applicants with a Bachelor Honours degree in mathematics or statistics may apply for credit for 48 cp (1 year).

**IELTS** Overall 6.0 (R:6, W:6, L:6, S:6)

This program is designed to consolidate and expand the mathematics knowledge gained by a student in an undergraduate program and to develop skills in undertaking mathematical research projects. Students complete a research project and subjects from the Mathematics and Statistics electives.

## Master of Statistics

[go.uow.edu.au/mstat](http://go.uow.edu.au/mstat)

CRICOS 083830G

DURATION 2 years (96 cp)

STARTS Autumn (February), Spring (July)

### ENTRY REQUIREMENTS

Recognised Bachelor degree with at least one year of mathematics or statistics and an equivalent average mark of 60%.

**CREDIT** Applicants with a Bachelor in mathematics or statistics may apply for credit for 24 cp (one session). Applicants with a Bachelor Honours degree in mathematics or statistics may apply for credit for 48 cp (1 year).

**IELTS** Overall 6.0 (R:6, W:6, L:6, S:6)

This program is designed to upgrade statistical skills and to educate students to undertake advanced statistical work in industry, commerce or government, including the ability to communicate effectively with others.

# PHYSICS

---

## Master of Science (Medical Radiation Physics)

[go.uow.edu.au/msci-mrphys](http://go.uow.edu.au/msci-mrphys)

CRICOS 067176M

DURATION 2 years (96 cp)

STARTS Autumn (February), Spring (July)

### ENTRY REQUIREMENTS

Recognised Bachelor degree in Science, Physics or Health with an equivalent average mark of 60%.

IELTS Overall 6.0 (R:6, W:6, L:6, S:6)

## COURSE STRUCTURE

The Masters program comprises 12 coursework subjects and an applied research project under the supervision of professional medical physicists.

Coursework subjects include:

- Advanced Modern Physics
- An Introduction to Human Anatomy and Physiology 1
- Applied Differential Equations
- Electromagnetism and Optoelectronics
- Multivariate and Vector Calculus
- Nuclear Physics
- Quantum Mechanics
- Nuclear Medicine
- Medical Imaging
- Instrumentation and Imaging Physics
- Radiation Protection
- Diagnostic Radiology
- Radiotherapy
- Radiobiology

## PROFESSIONAL RECOGNITION

Accredited by the Australasian College of Physical Scientists and Engineers in Medicine (ACPSEM).



# PSYCHOLOGY

## Master of Psychology (Clinical)

[go.uow.edu.au/mpsych-clin](http://go.uow.edu.au/mpsych-clin)

CRICOS 027467J

DURATION 2 years (96 cp)

STARTS Autumn (February)

### ENTRY REQUIREMENTS

Four-year Honours degree in Psychology of at least Class II Division 1 or equivalent. Applicants must have their qualifications assessed by the Australian Psychological Society (APS) for equivalence and provide this evidence in their application (see [psychology.org.au/membership/qualifications](http://psychology.org.au/membership/qualifications)).

Selection for entry is based on academic record, two referees' reports, relevant practical experience and a personal statement. Short-listed candidates are also subject to a selection interview. The NSW Health Department requires all students undertaking clinical placements to undergo a criminal record clearance prior to employment or placement in the NSW Health System.

This clearance will be conducted by the NSW Police Force and will be coordinated by NSW Health following enrolment. International students are required to provide an official criminal record clearance, in English, from their home country prior to their arrival in Australia.

IELTS Overall 7.0 (R:7, W:7, L:7, S:7)

The Master of Psychology (Clinical) is for graduates of a four-year accredited psychology program. It will suit those following a study pathway to registration and currently registered psychologists who intend to qualify for an area of practice endorsement with the Psychology Board of Australia. The degree provides a comprehensive understanding of the principles of psychological assessment and therapy, and the clinical skills required to assess and treat a wide variety of clinical conditions in children, adolescents and adults.

Teaching methods include face-to-face classes, weekend workshops and supervised clinical practicum at the University Clinic and at external placements.

## PROFESSIONAL RECOGNITION

The Master of Psychology (Clinical) is fully accredited by the Australian Psychology Accreditation Council (APAC) as a 5<sup>th</sup> and 6<sup>th</sup> year program of study. The degree equips the candidate with the academic requirements for full registration as a psychologist in Australia.

Completion of the degree AND a period of registrar training provides a candidate with the academic requirements for specialist endorsement in Clinical Psychology.

## ARTICULATION

High-performing students may apply to transfer from the Master of Psychology (Clinical) to the Doctor of Psychology (Clinical) or Doctor of Philosophy (Clinical Psychology) after completion of one year of study.

# PUBLIC & POPULATION HEALTH

## Master of Public Health Advanced

[go.uow.edu.au/mpubhlth-adv](http://go.uow.edu.au/mpubhlth-adv)

CRICOS 072569G\*

DURATION 2 years (96 cp)

STARTS Autumn (February), Spring (July)

### ENTRY REQUIREMENTS

A Bachelor degree from any discipline. Applicants intending to complete the Public Health Nutrition specialisation require a Bachelor degree with a major in Nutrition.

IELTS Overall 6.5 (R:6, W:6, L:6, S:6)

\*CRICOS code update in progress.

## Master of Public Health [MPH]

[go.uow.edu.au/mpubhlth](http://go.uow.edu.au/mpubhlth)

CRICOS 009245F\*

DURATION 1.5 years (72 cp)

STARTS Autumn (February), Spring (July)

### ENTRY REQUIREMENTS

A Bachelor degree from any discipline. Applicants intending to complete the Public Health Nutrition specialisation require a Bachelor degree with a major in Nutrition.

IELTS Overall 6.5 (R:6, W:6, L:6, S:6)

\*CRICOS code update in progress.

UOW Public Health degrees are flexibly designed to give students a broad introduction to public health and to provide the skills and knowledge to define, critically assess and resolve public health issues within a community. These flexible and interest driven programs allow students to develop, analyse and implement policy, and to plan and evaluate health services and programs while catering for their individual career goals. The Master of Public Health Advanced contains an additional requirement of a second specialty stream of advanced study, allowing students to tailor their learning to their career aspirations.

## COURSE STRUCTURE

### MASTER OF PUBLIC HEALTH

Students in the MPH (72 cp program) complete five Public Health core subjects (40 cp), one specialty stream (24 cp) chosen from the three available options, plus one elective subject (8 cp).

Core Public Health comprising the following five (8 cp) subjects:

- Contemporary Public Health Issues
- Epidemiology & Statistics
- Public Health Policy
- Program Application
- Social Determinants of Public Health

Plus choose one from the following three specialisations and complete all three (8 cp) subjects shown:

#### Health Promotion:

- Health Promotion
- Health Promotion Competencies
- Health Research Methods

#### Social Marketing for Health:

- Applying Theory and Research in Social Marketing
- Critical and Upstream Social Marketing
- Social Marketing Principles and Practise

#### Public Health Nutrition:

- Food and Nutrition Monitoring and Surveillance
- Nutrition Promotion
- Public Health Nutrition

### MPH ADVANCED

Students in the MPH Advanced (96 cp program) complete the same 72 cp MPH structure as above, plus an additional 24 cp by taking a second specialty option from the above list or one of the following (note the options below are only available to MPH Advanced students).

#### Work Health & Safety

Complete the following four (6 cp) subjects:

- People, Work & Ergonomics
- WHS Risk Management
- Work Injury Management
- Workplace Hazards & Hygiene

#### Health Informatics

Complete the following four (6 cp) subjects:

- Concepts and Issues in Healthcare Computing
- Information Design and Content Management
- Introduction to Health Informatics
- System Analysis and Design

Students who have obtained at least a 65% average in their core Public Health subjects, and who obtain the approval of the Course Coordinator, may alternatively have the option of taking either a Research Skills & Application specialty stream, or a Major Project.

## PROFESSIONAL RECOGNITION

Graduates of the MPH and MPH Advanced qualify for membership of the Australian Health Promotion Association and the Public Health Association of Australia.

---

## Master of Work Health and Safety Advanced

[go.uow.edu.au/mwhsadv](http://go.uow.edu.au/mwhsadv)

CRICOS 086232F

DURATION 2 years (96 cp)

STARTS Autumn (February)

### ENTRY REQUIREMENTS

Applicants must hold a recognised Bachelor degree in a cognate area (one third of course science-based) of at least three years duration, or equivalent. Other qualifications may also be considered.

IELTS Overall 6.5 (R:6.5, W:6.5, L:6.5, S:6.5)

---

## Master of Work Health and Safety

[go.uow.edu.au/mwhs](http://go.uow.edu.au/mwhs)

CRICOS 083559G

DURATION 1.5 years (72 cp)

STARTS Autumn (February)

### ENTRY REQUIREMENTS

Recognised Bachelor degree, with a major in a Science or Health-related discipline; or a degree in another relevant area (for example engineering) which contains at least one year of science-based subjects. Applicants with other relevant qualifications and/or work experience may be considered.

IELTS Overall 6.5 (R:6.5, W:6.5, L:6.5, S:6.5)

---

## Graduate Diploma in Work Health and Safety

[go.uow.edu.au/gdip-whs](http://go.uow.edu.au/gdip-whs)

CRICOS 083560C

DURATION 1 year (48 cp)

STARTS Autumn (February)

### ENTRY REQUIREMENTS

Recognised Bachelor degree, with a major in a Science or Health-related discipline; or a degree in another relevant area (for example engineering) which contains at least one year of science-based subjects. Applicants with other relevant qualifications and/or work experience may be considered.

IELTS Overall 6.5 (R:6.5, W:6.5, L:6.5, S:6.5)

---

UOW's Work Health & Safety programs have been developed in conjunction with industry to address the complex nature of occupational health and safety in the workplace.

The advanced knowledge and skills developed throughout the degrees will allow you to confidently address complex workplace occupational health and safety issues through technical knowledge and application. There is also an emphasis on communication skills and techniques essential to effectively implement work health and safety strategies.

Both Masters programs provide intensive professional study in the area of occupational health & safety and require specialisation in one of three streams of study: Ergonomics, Occupational Hygiene or Research. Programs are intended for students who want to pursue careers in these specialist fields, and fulfil the educational requirements for certification as an Occupational Hygienist.

## COURSE STRUCTURE

The Graduate Diploma comprises the following subjects:

- People, Work & Ergonomics
- WHS Risk Management
- Work Health & Safety Law
- Industrial Epidemiology & Toxicology
- Work Injury Management
- Workplace Hazards & Hygiene
- Occupational Health & Safety Systems
- Physical Hazards at Work

Students in the Masters program complete the above and additional subjects including Ergonomics Essentials, Occupational Hygiene, Health Research Methods and a Workplace Project.



# SCIENCE

## International Master of Science

[go.uow.edu.au/intmsc](http://go.uow.edu.au/intmsc)

CRICOS 083007F

DURATION 2 years (96 cp)

STARTS Autumn (February), Spring (July)

### ENTRY REQUIREMENTS

Recognised Bachelor degree in a discipline relevant to the intended specialisation, with at least three third-year subjects in the discipline, with an equivalent average mark of 65%.

IELTS Overall 6.0 (R:6, W:6, L:6, S:6)

## Master of Science

[go.uow.edu.au/msci](http://go.uow.edu.au/msci)

CRICOS 067084D

DURATION 1.5 years (72 cp)

STARTS Autumn (February), Spring (July)

### ENTRY REQUIREMENTS

Recognised Bachelor degree in a relevant specialisation (refer to the requirements for each specialisation), or equivalent.

IELTS Overall 6.0 (R:6, W:6, L:6, S:6)

## Master of Science and Management

[go.uow.edu.au/mscimgmt](http://go.uow.edu.au/mscimgmt)

CRICOS 067083E

DURATION 2 years (96 cp)

STARTS Autumn (February), Spring (July)

### ENTRY REQUIREMENTS

Recognised Bachelor degree in a relevant specialisation (refer to the requirements for each specialisation), or equivalent.

IELTS Overall 6.0 (R:6, W:6, L:6, S:6)

Three options are available at the Masters level for students who want to pursue a specialisation in one of the following areas:

- Biotechnology
- Chemistry
- Environmental Biology
- Medicinal Chemistry
- Earth and Environmental Science (subject to final approval)

The Master of Science program focusses on core science skills and a specialisation. The International Masters program adds the study of global perspectives, the opportunity to undertake an overseas exchange and undertake research in an area of global scientific importance. The Master of Science and Management adds a core of business subjects suitable for those desiring to move into a managerial role in the science sector.

## COURSE STRUCTURES

### International Master of Science

- Core science subjects (24 cp)
- Specialisation (36 cp)
- Global Perspectives in Science (12 cp)
- International Research Project (24 cp)
- Exchange option – students are encouraged to complete a session of study at one of UOW's partner institutions

### Master of Science

- Core science subjects (24 cp)
- Specialisation (48 cp)

### Master of Science and Management

- Core science subjects (24 cp)
- Core management subjects (24 cp)
- Specialisation (48 cp)

#### Core science subjects:

- Current Questions in Science
- Fundamentals of Science Communication
- Fundamentals of Science Data and IT
- Fundamentals of Science Laboratories

#### Core management subjects:

- Managing People in Organisations
- Project Management

Plus two electives from options including: international business, international financial management, managing in multi-national companies, accounting for managers, and marketing management.

## SPECIALISATIONS

### BIOTECHNOLOGY

#### ENTRY REQUIREMENTS

A recognised Bachelor of Science degree that includes subjects in the areas of biochemistry, cell medical biology, molecular biology, microbiology or immunology.

This Biotechnology specialisation is designed for students who seek knowledge and technological expertise in specific areas of cell and molecular biology, which are the basis for modern biotechnological research and development. Students will gain an understanding of DNA technology and genetic engineering of micro-organisms, and plant and animal cells. The subjects provide an introduction to the basic elements of modern cell and molecular biology, before proceeding to intensive training in current biotechnology and its application to the fields of human therapeutics, agriculture and diagnostics.

Tutorials and laboratory-based practical work will be undertaken in each of the subjects, and students have the opportunity to explore new technology including genomics, transcriptomics and proteomics.

Subjects available in the Biotechnology specialisation:

- Applied Bioinformatics
- Biotechnology
- Infection & Immunity
- Molecular Cell Biology

A literature review or research project may be included subject to approval by the Course Coordinator.

### CHEMISTRY

#### ENTRY REQUIREMENTS

A recognised Bachelor of Science degree in Chemistry, including at least 24 cp (or equivalent) of third-year chemistry.

This course prepares students for the demands of postgraduate research programs (e.g. M. Phil and PhD) by further developing their individual research skills, while simultaneously exposing them to cutting edge topics such as supramolecular science, ecotoxicology, atmospheric modelling, rational drug design, computational chemistry and laser spectroscopy.

Subjects available in the Chemistry specialisation:

- Advanced Analytical Chemistry
- Advanced Organic Synthesis and Reactivity
- Elucidating Molecular Structure
- Environmental Chemistry and Climate Change
- Intelligent Materials and Their Applications

A laboratory project or literature report may be included with the approval of the Course Coordinator.

### ENVIRONMENTAL BIOLOGY

#### ENTRY REQUIREMENTS

A recognised Bachelor of Science degree that includes introductory-level subjects in the areas of general biology, ecology, genetics, evolution, physiology and statistics.

This program is designed for students who seek further knowledge and skills in the biological sciences, or want to qualify for a postgraduate research degree. Areas covered include conservation biology, ecological and evolutionary physiology, marine and terrestrial ecology, and fisheries and aquaculture.

Subjects available in the Environmental Biology specialisation:

- Advanced Topics in Fisheries and Aquaculture
- Advances in Conservation Biology
- Ecological and Evolutionary Physiology
- Advanced Topics in Marine and Terrestrial Ecology

Research projects and subjects in molluscan biology and other areas may be included with the approval of the Course Coordinator.

### MEDICINAL CHEMISTRY

#### ENTRY REQUIREMENTS

A recognised Bachelor of Science degree in Chemistry or Medicinal Chemistry, including at least 24 cp (or equivalent) of third-year Chemistry and at least second-year Biology and Biochemistry.

This course is ideal preparation for those who wish to enhance their opportunities of working in the drug discovery industry, or are seeking to enhance their chances of gaining entry into a postgraduate pharmacy program. This program provides vocational training in the area and consists of specialised coursework and a small research project. The program includes the study of drug design and development, synthesis, pharmacology, computer modelling and structural studies.

Subjects available in the Medicinal Chemistry specialisation:

- Introduction to Medicinal Chemistry\*
- Advanced Topics in Medicinal Chemistry\*
- Advanced Analytical Chemistry
- Advanced Organic Synthesis and Reactivity
- Bioinformatics and Biological Chemistry
- Elucidating Molecular Structure

A laboratory project or literature report may also be included with the approval of the Course Coordinator.

\*core subjects for this specialisation.

# PATHWAYS TO MASTERS PROGRAMS IN SCIENCE

## International Graduate Diploma in Science

[go.uow.edu.au/intgdip-sci](http://go.uow.edu.au/intgdip-sci)

CRICOS 083005G

DURATION 1 year (48 cp)

STARTS Autumn (February), Spring (July)

### ENTRY REQUIREMENTS

Recognised Bachelor degree in a discipline relevant to the intended specialisation with an equivalent average mark of 60%.

IELTS Overall 6.0 (R:6, W:6, L:6, S:6)

## International Graduate Certificate in Science

[go.uow.edu.au/intgcert-sci](http://go.uow.edu.au/intgcert-sci)

CRICOS 083006G

DURATION 6 months (24 cp)

STARTS Autumn (February), Spring (July)

### ENTRY REQUIREMENTS

Recognised Bachelor degree in a discipline relevant to the intended specialisation with an equivalent average mark of 50%.

IELTS Overall 6.0 (R:6, W:6, L:6, S:6)

The International Graduate Diploma and Graduate Certificate programs are fully nested within the International Master of Science degree. Students progress to each level, with credit for all subjects completed, subject to obtaining an average mark of 65% in each level.

## COURSE STRUCTURES

### INTERNATIONAL GRADUATE CERTIFICATE IN SCIENCE

The course comprises three compulsory subjects:

- Fundamentals of Science Communication
- Fundamentals of Science Laboratories
- Global Perspectives in Science

### INTERNATIONAL GRADUATE DIPLOMA IN SCIENCE

Consists of the International Graduate Certificate subjects listed above plus:

- Current Questions in Science
- Fundamentals of Science Data

Plus 12 cp from one of the specialisations in Science.

## Graduate Certificate in Science

[go.uow.edu.au/gcert-sci](http://go.uow.edu.au/gcert-sci)

CRICOS 083842D

DURATION 6 months (24 cp)

STARTS Autumn (February), Spring (July)

### ENTRY REQUIREMENTS

Recognised Bachelor degree in any Science discipline.

IELTS Overall 6.0 (R:6, W:6, L:6, S:6)

The Graduate Certificate in Science is for students who wish to upgrade their qualifications and gain further background in science. The degree also gives students the required foundations for further study in the science discipline.

After satisfactory completion of the Graduate Certificate, students may receive full credit for the four subjects completed if progressing to the Master of Science or the Master of Science and Management specialisations in Biotechnology, Environmental Biology, Chemistry, Medicinal Chemistry.

This means the Master of Science will take a further 48 cp (1 year) to complete, or 72 cp (1.5 years) for the Master of Science and Management for these specialisations.



# APPLYING TO UOW



# ACADEMIC ENTRY REQUIREMENTS

## ACADEMIC REQUIREMENTS

The details under 'Entry Requirements' in the course section indicate the minimum academic entry requirements for each course. Note these are indicative only and do not guarantee a place in the course. These requirements may be amended at any time. All academic studies you have undertaken will be taken into account when considering your application.

All students must also meet the English language requirements shown for each course. Detailed information on English requirements are on the following pages.

Further details can be found at [uow.edu.au/future/international/apply/english](http://uow.edu.au/future/international/apply/english)

Following is an explanation of some important terms used in the entry requirements:

### ACCREDITATION

UOW courses are recognised internationally and in Australia through accreditation by professional organisations, and some of these are included under the heading "accreditation" in the course listing. In addition to completing an approved program of subjects within an accredited course, additional criteria may need to be fulfilled to meet the membership requirements for some organisations. For example, completion of a period of professional experience, or independent assessment of previous qualifications or work experience. It is your responsibility to check with the relevant accrediting authority for full details of their requirements.

### DURATION

The minimum length required for qualifications or work experience, and is full-time duration only.

### EQUIVALENT AVERAGE MARK

Where shown, a percentage mark relates to the requirement from an Australian degree. If not shown, the actual percentage mark will not usually be lower than 50%. While similar grading systems are used around the world, many countries have different systems to those used in Australia (where the pass mark is commonly 50%).

## PROFESSIONAL EXPERIENCE OR WORK EXPERIENCE

Employment in a position relevant either to your previous academic qualifications or to the course applied for. The experience should be at a senior level (for example as a manager or supervisor) or in a professional discipline with a considerable level of responsibility in employment (for example engineers, accountants, health professionals, marketing executives). This information should be provided in the 'Employment Details' section of the application form and be supported with documentary evidence, including a detailed curriculum vitae and referee letters from previous employers.

## RECOGNISED BACHELOR DEGREE

The qualification must be assessed as equivalent to an Australian Bachelor degree and from an institution recognised by UOW. These assessments will take into account recommendations from the Australian Government's National Office of Overseas Skills Recognition (NOOSR), other international assessment authorities and the University's own determinations.

## RELEVANT

Used with reference to tertiary qualifications and work experience, "relevant" means in an area related to the specific course applied for.

## TERTIARY QUALIFICATIONS

Used to refer to academic qualifications completed after high school, at an institution recognised by UOW, other than Bachelor or Masters degrees.

## WEIGHTED AVERAGE MARK (WAM)

An average of individual subject marks weighted according to the level of the subject: where, for example, the mark for a 300-level (third-year) subject will contribute more to the average than a 100-level (first-year) subject. It is expressed as a score out of 100.

# ENGLISH LANGUAGE REQUIREMENTS

All students are required to provide evidence of satisfying English language requirements. For full details go to

[uow.edu.au/future/international/apply/english](http://uow.edu.au/future/international/apply/english)

Results in the major international English language tests are accepted, including IELTS, TOEFL, Pearson and Cambridge, where the test has been taken within two years of commencement at UOW.

## PREVIOUS STUDY IN ENGLISH

Applicants may meet the English language requirement based on successful study in English medium in Australia or offshore.

## STUDY IN AUSTRALIA OR AUSTRALIAN QUALIFICATIONS OFFSHORE

Successful completion of the following qualifications are acceptable as meeting the University's English language requirement:

- Year 12 in Australia, or any Australian Year 12 qualification completed offshore;
- Foundation Studies, Certificate IV or Diploma with a minimum duration of one year (full-time) completed in Australia; or any of these qualifications completed at an Australian institution offshore;
- At least one year (full-time) of study toward a Bachelor or Masters degree in Australia, or at an Australian institution offshore.

## OTHER QUALIFICATIONS COMPLETED IN ENGLISH

Applicants may be considered as meeting the English language requirements if successfully completing two (2) years of secondary or tertiary study at an approved institution where:

- the language of instruction was English; and
- the institution is located in a country where the official language is English.

Academic transcripts and an official letter from the institution certifying that English was the sole language of instruction and assessment must be provided. Previous study in English is considered on a case-by-case basis and does not automatically meet UOW's English language requirement.

## WHAT IS THE ENGLISH REQUIREMENT FOR MY COURSE?

The English requirement for each course is shown in the course description. The requirements are shown in terms of the IELTS academic test requirements; for example:

"IELTS: 6.0 (R:6, W:6, L:5, S:5)"

This means, to meet the English requirement for this course is a minimum overall score of IELTS 6.0, with at least 6.0 in reading and writing, and 5.0 in speaking and listening bands.

The equivalent scores for overall and individual band scores in the TOEFL and Pearson Test of English (academic tests) can be determined by using the table below:

TEST	Overall	Reading	Writing	Speaking	Listening
IELTS	6.0	6.0	6.0	6.0	6.0
TOEFL	79	18	18	18	18
Pearson PTE	57	57	57	50	50
IELTS	6.5	6.5	6.5	6.5	6.5
TOEFL	88	20	20	20	20
Pearson PTE	64	59	59	59	59
IELTS	7.0	7.0	7.0	7.0	7.0
TOEFL	100	22	22	22	22
Pearson PTE	72	72	72	65	65

The English language requirement can also be satisfied by completing a 'direct entry' English course with UOW College as shown on the next page.

UOW recognises a number of other English language pathway courses offered by English language centres in Sydney, for details, email: [futurestudents@uow.edu.au](mailto:futurestudents@uow.edu.au)



## ENGLISH LANGUAGE PROGRAMS

UOW College offers a range of English language courses to suit your needs.

English for Tertiary Studies (ETS) provides a direct entry pathway to further study at UOW, without the need to sit an IELTS or other external test. ETS is available in 6, 12 or 18 week programs.

ETS	ENTRY REQUIREMENTS
6 weeks	IELTS 6.0 with 5.5 in reading and writing, or equivalent
12 weeks	IELTS 5.5 with 5.0 in reading and writing, or equivalent
18 weeks	IELTS 5.0 with 5.0 in reading and writing, or equivalent

If you require a longer course, you can enrol in English for Academic Purposes, and progress through to ETS to gain entry to UOW.

UOW College also offers IELTS Preparation courses and the study skill program Introduction to Academic Studies. For more information on all English language programs visit [uowcollege.edu.au/future-students/international/english-tert-studies](http://uowcollege.edu.au/future-students/international/english-tert-studies)

### ENGLISH COURSE LENGTH ESTIMATOR

The following table provides a guide to the length of English course you may require, depending on your current ability.

Level	SCORE AT TIME OF APPLICATION		ESTIMATED TIME REQUIRED TO REACH ENTRY SCORE (WEEKS)				
	IELTS	TOEFL (internet)	IELTS 5.0	IELTS 5.5	IELTS 6.0	IELTS 6.5	IELTS 7.0
Advanced	6.5	88					12
	6	79			6 *	12	18
	5.5	70		6 #	12	18	24
Intermediate	5	61		12	18	24	30
	4.5	52	12	18	24	30	36
Lower intermediate	4	45	18	24	30	36	42
	3.5	38	24	30	36	42	48
Elementary	3	24	30	36	42	48	48+

\* for students with 6.0 overall, but 5.5 in either reading or writing

# for students with 5.5 overall but less than 5 in reading or writing

### ENGLISH START DATES TO PREPARE FOR ENTRY TO UOW COURSES

FOR ENTRY TO UOW SESSION		START DATE* BY LENGTH OF ENGLISH COURSE REQUIRED							
		48 weeks	42 weeks	36 weeks	30 weeks	24 weeks	18 weeks	12 weeks	6 weeks
2016	Trimester 1 (Feb)	-	-	-	-	6 Jul 15	17 Aug 15	28 Sep 15	9 Nov 15
	Autumn (Feb)	-	-	-	6 Jul 15	17 Aug 15	28 Sep 15	9 Nov 15	4 Jan 16
	Trimester 2 (May)	-	6 Jul 15	17 Aug 15	28 Sep 15	7 Nov 15	4 Jan 16	22 Feb 16	4 Apr 16
	Spring (Jul)	6 Jul 15	17 Aug 15	28 Sep 15	9 Nov 15	4 Jan 16	22 Feb 16	4 Apr 16	16 May 16
	Trimester 3 (Aug)	17 Aug 15	28 Sep 15	9 Nov 15	4 Jan 16	22 Feb 16	4 Apr 16	16 May 16	4 Jul 16
2017	Trimester 1 (Feb)	4 Jan 16	22 Feb 16	4 Apr 16	16 May 16	4 Jul 16	15 Aug 16	26 Sep 16	7 Nov 16
	Autumn (Feb)	22 Feb 16	4 Apr 16	16 May 16	4 July 16	15 Aug 16	26 Sep 16	7 Nov 16	2 Jan 17

\* All dates shown as Day Month Year

# FEES & HOW TO APPLY

## FEES

[uow.edu.au/future/international/apply/fees](http://uow.edu.au/future/international/apply/fees)

The above website includes information on tuition fees for each course, as well as compulsory Overseas Students Health Cover and UOW Student Amenities Fees.

## APPLY ONLINE FOR ALL DEGREES

[apply.uow.edu.au](http://apply.uow.edu.au)

Apply online for all degrees excluding Medicine. There is no application fee for applying online.

All HDR applications must be submitted online. Students may also apply for a HDR scholarship at the same time. For more information go to [uow.edu.au/future/international/apply](http://uow.edu.au/future/international/apply)

## SCHOLARSHIPS

[uow.edu.au/future/international/apply/scholarships](http://uow.edu.au/future/international/apply/scholarships)

See page 31 for scholarship application procedures and closing dates.

## FORM-BASED APPLICATIONS FOR COURSEWORK DEGREES

You can apply using a form for coursework degrees only—payment of a \$75 fee must be included with the application.

See [uow.edu.au/future/international/apply](http://uow.edu.au/future/international/apply)

## FURTHER INFORMATION

More information is available on the UOW website:

Certification of Documents:

[uow.edu.au/future/international/apply/how/certified](http://uow.edu.au/future/international/apply/how/certified)

Offer, Acceptance & Payment:

[uow.edu.au/future/international/accept](http://uow.edu.au/future/international/accept)

Privacy and Disclosure: [uow.edu.au/legal/privacy](http://uow.edu.au/legal/privacy)



*My research interests are mainly related to lithium ion battery cathode materials. ISEM at UOW is a flagship institute in Australia and is famous for expertise in energy storage systems.*

*I want to give many thanks for my China Scholarship Council, UOW postgraduate tuition award and UOW Faculty of Engineering and Information Sciences top-up scholarships. They cover my living expenses, which allows me to seriously focus on my PhD studies.*

### JIANTIE XU / CHINA

PhD (Nanomaterials Science)

- China Scholarship Council Award
- International Postgraduate Tuition Award
- Engineering Faculty Scholarship



# IMPORTANT DATES

## CLOSING DATES FOR COURSE APPLICATIONS

For most courses, applications can be submitted at any time throughout the year, up to one week before the start of each session. However, applicants need to allow time for their application to be assessed, to apply for a visa and to include any period of English language study they might require.

## KEY DATES

### UOW

#### AUTUMN SESSION 2016

Orientation	23 Feb – 25 Feb
Lectures Commence (weeks 1-8)	29 Feb – 22 Apr
Mid-Session Recess (1 week)	25 Apr – 29 Apr
Lectures Recommence (weeks 9-13)	2 May – 3 Jun
Study Recess (1 week)	6 Jun – 10 Jun
Exams (2 weeks)	11 Jun – 23 Jun
Mid-Year Recess (4 weeks)	27 Jun – 22 Jul
Release of Results	5 Jul

#### SPRING SESSION 2016

Orientation	19 Jul
Lectures Commence (weeks 1-9)	25 Jul – 23 Sep
Mid-Session Recess (1 week)	26 Sep – 30 Sep
Lectures Recommence (weeks 10-13)	4 Oct – 28 Oct
Study Recess (1 week)	31 Oct – 4 Nov
Exams (2 weeks)	5 Nov – 17 Nov
Release of Results	29 Nov

## ACCOMMODATION APPLICATIONS

Applications for university residences must be made online at [apply-accom.uow.edu.au](http://apply-accom.uow.edu.au)

In order to secure a place in the residences, applications should be made as early as possible.

### SYDNEY BUSINESS SCHOOL

(Sydney & Wollongong Campus)

#### TRIMESTER 3 2015

Orientation & Enrolment (Sydney Campus)	12 Aug – 13 Aug
Orientation & Enrolment (Wollongong Campus)	13 Aug – 14 Aug
Lectures Commence	17 Aug
Study Recess (1 week)	2 Nov – 6 Nov
Exams	9 Nov – 14 Nov
Release of Results	25 Nov

#### TRIMESTER 1 2016

Orientation	3 Feb – 5 Feb
Lectures Commence	8 Feb
Study Recess (1 week)	18 Apr – 22 Apr
Exams	23 Apr – 29 Apr
Release of Results	11 May

#### TRIMESTER 2 2016

Orientation	11 May – 13 May
Lectures Commence	16 May
Study Recess (1 week)	25 Jul – 29 Jul
Exams	30 Jul – 5 Aug
Release of Results	17 Aug

#### TRIMESTER 3 2016

Orientation	17 Aug – 19 Aug
Lectures Commence	22 Aug
Study Recess (1 week)	31 Oct – 4 Nov
Exams (2 weeks)	5 Nov – 17 Nov
Release of Results	29 Nov



# LEARN MORE

**[uow.edu.au/future/international](http://uow.edu.au/future/international)**

Within Australia: 1300 367 869

International: +61 2 4221 3218

**[facebook.com/uowfuture](https://facebook.com/uowfuture)**

**[futurestudents@uow.edu.au](mailto:futurestudents@uow.edu.au)**

**#ThisIsUOW**

---

## SEE THE UOW WOLLONGONG CAMPUS FOR YOURSELF

If you're in Australia you can book a free tour of UOW Wollongong to see our world-class campus for yourself. Our tours are run by current UOW students who can answer all your questions about study and student life at UOW.

Bookings for campus tours can be made at  
**[uow.edu.au/future/events](http://uow.edu.au/future/events)**

---

**UNIVERSITY OF  
WOLLONGONG**  
AUSTRALIA



---

PERSONALISED EXPERIENCES : WORLD-CLASS RESULTS

The University of Wollongong attempts to ensure the information contained in this publication is correct at the time of production (June 2015); however, sections may be amended without notice by the University in response to changing circumstances or for any other reason. Check with the University at the time of application/enrolment for any updated information. UNIVERSITY OF WOLLONGONG CRICOS: 00102E. UOW College is a registered business name of UOWC Ltd. ABN: 14 105 312 329. CRICOS: 02723D.