

**YONSEI,**  
*Leading the Way to the Future*

OFFICE of  
INTERNATIONAL  
AFFAIRS  
2018

OFFICE *of*  
INTERNATIONAL  
AFFAIRS

2018

9  
FOREWORD

/

Message from the President  
Message from the Vice President for  
International Affairs

21  
PROVIDING  
GLOBAL OPPORTUNITIES  
FOR STUDENTS

/

Degree Programs in English  
Yonsei International Campus  
Study Abroad at Yonsei  
Yonsei International Summer School  
Winter Abroad at Yonsei  
Short Term Programs

1  
OVERVIEW OF  
YONSEI UNIVERSITY

/

Our Spirit, Our Philosophy  
Historical Overview  
Why Yonsei University  
Yonsei At a Glance  
Global Initiatives

12  
IDENTIFYING  
INTERNATIONAL  
UNIVERSITY LINKS

/

Increasing Profile Through Global Alliances  
Promoting the Yonsei Brand  
Bilateral Partnerships

33  
ENGAGING  
INTERNATIONAL  
STUDENTS

/

Activities  
Facilities  
Academic Calendar  
OIA Organizational Structure  
Contact Information

OVERVIEW  
OF  
YONSEI  
UNIVERSITY



Spirit & Philosophy  
1

FOUNDING SPIRIT

Yonsei University cultivates leaders who embody the spirit of truth and freedom. In 1885, Yonsei’s founder chose our founding philosophy from a passage in the Gospel according to John: “If you continue in my word, you are truly my disciples, and you will know the truth, and the truth will set you free.”

YONSEI’S PHILOSOPHY

Yonsei University serves as the “alma mater” (fostering mother) of all arts and sciences to nurture leaders who will contribute to society in a broad, ecumenical spirit of Christian teaching epitomized in its motto of “truth and freedom.” We will carry forward the cultural heritage of our various civilizations and cultures of the world, leading the human effort towards the advancement of scholarship through creative thought and critical thinking. Moreover, we continue to promote a commitment to justice and to inspire courage, to serve our neighbors wholeheartedly and to contribute to the prosperity of humankind. Yonseians will exercise their leadership to accomplish this mission and to realize our goal of standing proudly on the world stage.





SEVERANCE UNION MEDICAL COLLEGE

When Western missionaries saved the life of royal family members after the Gapsin Coup in 1884, Emperor Gojong made a royal decree to establish the nation's first Western hospital, Gwanghyewon, under the leadership of Dr. Horace N. Allen, a missionary from the American Presbyterian Church who was then serving as the imperial doctor. Gwanghyewon was established on April 10, 1885. Dr. Oliver R. Avison of the School of Medicine at the University of Toronto succeeded Dr. Allen, and donations made by Mr. Louis H. Severance of Cleveland, Ohio contributed to the hospital's reconstruction and the establishment of a medical school on 1904, giving the hospital its current name, Severance Hospital.

YONHI COLLEGE

Dr. Horace Grant Underwood founded the Chosen Christian College in March of 1915. Dr. Underwood arrived in Korea in 1885 as a medical missionary and is known to have greatly contributed to the development of education, Christian values, and society. The Chosen Christian College's original campus was housed at the YMCA in downtown Seoul and was the result of active cooperation of the Foreign Mission Board of Presbyterian Church based in New York, a missionary team from the South and North Methodist Church, and a missionary team from the Canada Presbyterian in Korea. It later became accredited as Yonhi. The legacy set by the Underwood family who have remained in Korea for over four generations has continued to contribute greatly to the development of the nation and its people's welfare.

AT THE FOREFRONT  
OF KOREAN  
MODERNIZATION  
AND GLOBALIZATION



PROMOTING THE VALUES OF  
TRUTH AND FREEDOM (1885-1956)

Founded upon the Christian principles of truth and freedom, Yonsei University, as the nation's first modern university, introduced Western medicine and science to Korea and played a major role in its subsequent development. During the nation's early modernization period, Yonsei utilized Western academics and science and stood at the forefront of Korea's modernization. During the times of devastation before and after the Korean War, Yonsei put forward a platform of education on which the nation could be rebuilt and became the nation's beacon of hope.



EMERGING AS  
A GLOBAL UNIVERSITY (1957-2011)

In 1957, as Korea emerged from the destruction of the Korean War, Yonsei underwent a second founding by merging Yonhi University with Severance Union Medical College, inspiring a generation to achieve the economic and democratic progress dubbed the "Miracle of the Han River." Thanks to the efforts of hard working generations of Yonseians, additional campuses opened in 1978 in Wonju and in 2010 at the Yonsei International Campus in Songdo to continue empowering talented young global leaders.



BUILDING A NEW HISTORY  
IN HIGHER EDUCATION (2012- )

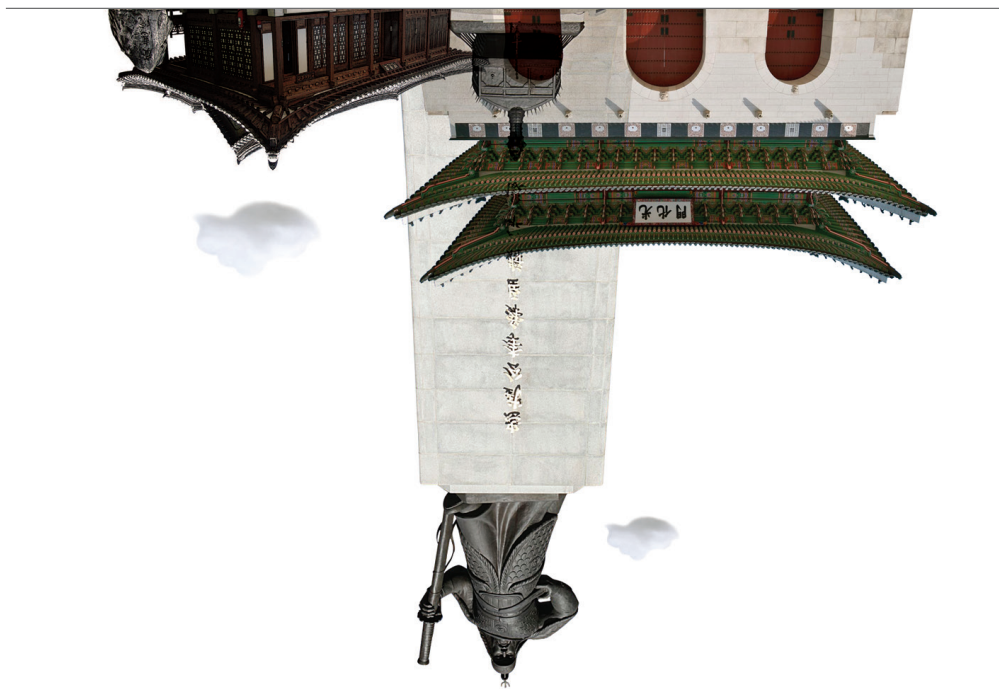
Now, entrusted with the formidable mission of establishing a new paradigm for Korean universities, whilst standing shoulder to shoulder with world-class universities, Yonsei has embarked upon a mission to "lead the way to the future" in order to embrace and serve others around the world.





## THE CULTURE OF YONSEI CREATING A FUTURE THROUGH TRADITION

Yonsei University is located in a unique part of Seoul where you can experience both the  
vibe of the metropolitan area and the awe of deep-rooted Korean traditions.



### THE CENTER OF TRADITIONAL CULTURE – THE HEART OF SEOUL

Yonsei University is located in the center of the capital city of South Korea, Seoul, where you can witness a variety of traditional Korean culture. In addition to Korea's first modern healthcare institution, Gwanghyewon which is located within the university, there are other nearby sites where you can experience traces of the 500-year history of the Joseon Dynasty, such as Deoksugung, Changdeokgung, and Gyeongbokgung. These sites are located only 15 minutes away from campus so that students may easily seek out these opportunities to experience Korea's traditional culture.



### THE HEART OF YOUTH CULTURE – SINCHON

The Sinchon area around Yonsei campus is home to one of the most vibrant and exciting college towns in Seoul. With a rich array of facilities and activities, Sinchon creates a unique culture of its own and attracts young population from around the city and around the country. This is where the youth of Korea mingle.



### THE GATEWAY TO THE WORLD – SONGDO

In 2010, Yonsei opened its International Campus in Songdo, conveniently located just ten minutes away from the Incheon International Airport. The Residential College was recently established at the Songdo campus to introduce a leading educational model that encompasses global education, holistic education and creative education through the integration of living and learning. The Yonsei International Campus is a vanguard of Yonsei's globalization and of digital technology and will serve as the foundation of Yonsei's ascension as Asia's World University.

ACADEMIC UNITS

112/22

112 Departments in 22 Colleges

21 Graduate Schools

120 Research Institutes/Centers

GLOBAL NETWORK

650/70

Academic exchange with over 650 institutions from 70 countries

STUDENTS Full-time equivalent

37,012

Undergraduate students: 25,404

Graduate students: 11,608

ANNUAL BUDGET Unit: US Dollars

3.5 billion

ALUMNI Unit: Number of Persons

313,706

FACULTY Unit: Number of Persons

5,104

Full-time: 2,042

Part-time: 3,062

\* Excluding visiting professors, researchers and post doctorates

ANNUAL RESEARCH FUNDS Unit: US Dollars

207 million

STAFF Unit: Number of Persons

1,138

Total non-academic staff

ANNUAL SCHOLARSHIPS Unit: US Dollars

126 million

QS WORLD UNIVERSITY RANKINGS 2018

106

NATIONAL UNIVERSITY RANKINGS 2017

1st

THE (World's Most International Universities)

QS ASIAN UNIVERSITY RANKINGS 2018

19





# YONSEI'S GLOBAL INITIATIVES

## 1 New Alliances

Expanding our global networks and creating new links



## 2 3 Campus East Asia

Fostering East Asian studies with a specialized program for educational exchange

## 3 Strategic Partnerships & Research Collaboration

Identifying and strengthening ties with existing partners through joint research and mobility

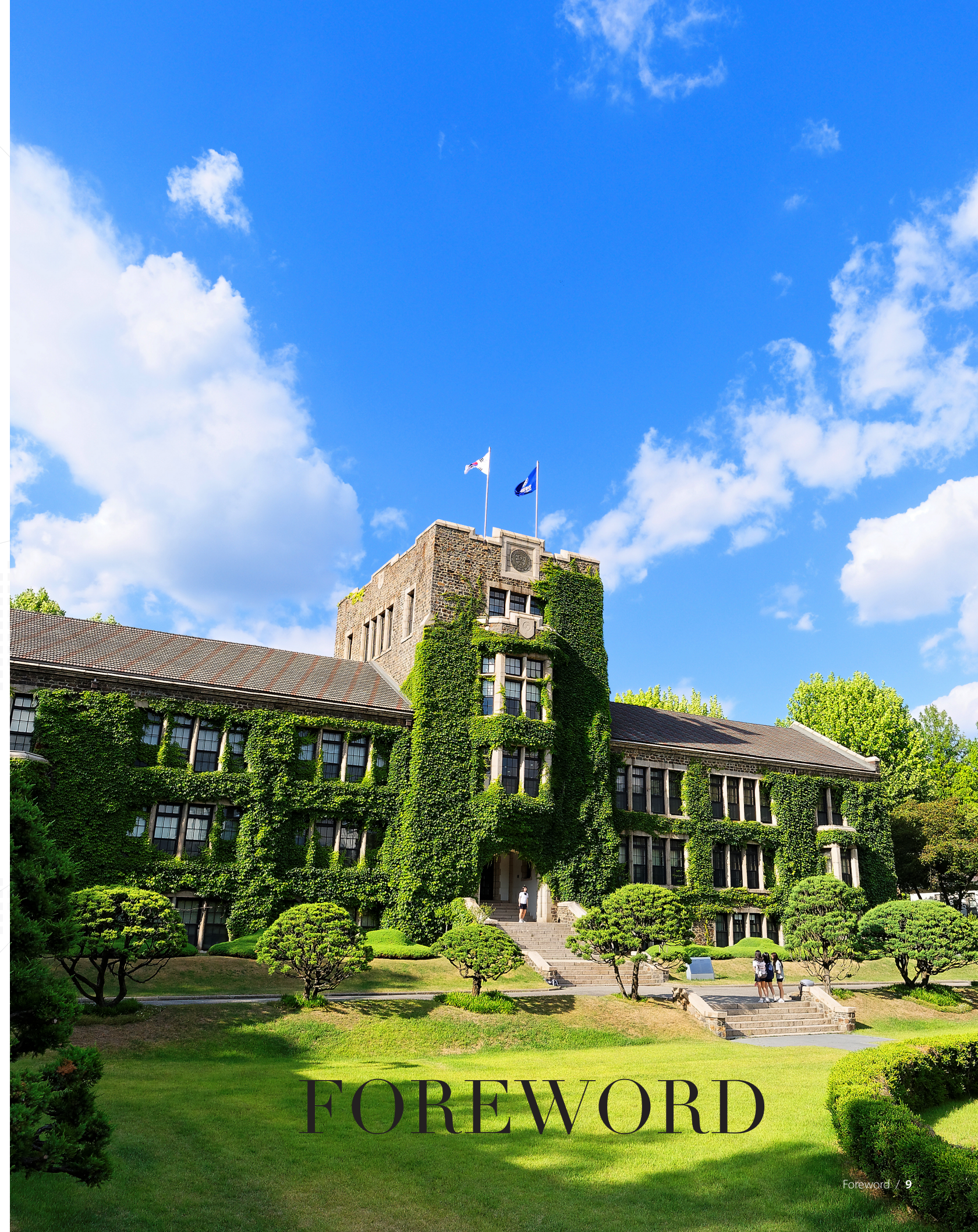


## 4 Student Mobility

Encouraging the exchange of knowledge and experience across borders all year round

## 5 Study Abroad at Yonsei

Including Yonsei International Summer School(YISS) and Winter Abroad at Yonsei(SAY)



# FOREWORD



# YONSEI, THE PREMIER GATEWAY TO THE ASIAN EXPERIENCE



**Yong-Hak Kim, Ph.D.**  
President, Yonsei University

Since its establishment in 1885, Yonsei University has been at the forefront of higher education. The “Yonsei Legacy” is a unique and powerful one. It blends tradition with the vision of maintaining its stature as one of the most modern, forward-looking, and liberal universities in Asia.

Today, Yonsei is recognized by the global community as one of the most innovative and globalized universities.

Founded on Christian values, Yonsei has played a unique role among Korean universities as a gateway for scholars and students interested in Korean and Asian studies, language and culture. Also, as Korea’s window to the world, Yonsei for over a century has served as a principal conduit of knowledge flowing in and out of Korea. Such a role has propelled Yonsei’s growth and will allow it to assume an even greater role in the 21st century. I firmly believe that Yonsei University’s place as a leading university in the world depends on the level of its globalization. In this respect, the Office of International Affairs will continue to play a vital role in facilitating Yonsei’s global push.

The numbers speak for themselves. Yonsei today has the most extensive overseas exchange network in Korea, with exchange agreements with over 650 universities worldwide. On average, Yonsei University annually sends 1,000 students abroad and receives 1,500 international students as exchange students, both representing one of the largest groups in Korea. The Yonsei International Summer School is the most successful summer program in the country, receiving over 1,500 students.

We sincerely hope that you will experience the enduring “Yonsei Spirit.”

We invite you to join us at Yonsei, the premier gateway to Asia.



**Doowon Lee, Ph.D.**  
Vice President for International Affairs

On behalf of our professors, staff, and students, I would like to welcome all of you. As Korea’s first international university, Yonsei has epitomized Korea’s international education and exchange. Based on its tradition of academic excellence, intercultural environment, and commitment to internationalization, Yonsei University continues to attract leading international students from across the globe throughout the academic year. Whether studying at Yonsei for a year, a semester, or during the summer or winter, you will become an integral part of the Yonsei family.

Through our office, we offer a wide range of services which include nearly 1,000 undergraduate courses taught in English each semester, Korean language lessons through the Korean Language Institute as well as Chinese and Japanese language courses through the Underwood International College, and over 3,400 regular courses taught in Korean in other departments. You will have access to state-of-the-art facilities, modern dormitories (the SK Global House and International House), a world class library (Samsung Yonsei Library) and fitness center, and the Global Lounge which provides international and local students a hub to bond throughout the academic year.

Studying and living at Yonsei University will result in lifelong contacts and friendships and we actively encourage you to join student clubs and participate in on-campus activities. The OIA sincerely looks forward to your visit, and we will do our utmost to ensure that your Yonsei experience will be a rewarding one - academically, culturally, personally, and professionally.

# SPREAD YOUR WINGS AT YONSEI





# IDENTIFYING INTERNATIONAL UNIVERSITY LINKS



## OFFICE OF INTERNATIONAL AFFAIRS

The Office of International Affairs (OIA) provides strategic direction for Yonsei University's global endeavors in its mission to become Asia's World University.

Since its establishment in 1966 as the first international office among Korean universities, the OIA has developed significant partnerships with leading universities around the world to develop collaborative global strategies, initiatives, and programs and ensure a culturally rich environment for students and faculty on campus. The office consists of three teams: the International Affairs Team, International Student and Scholar Service Team, and International Admissions Team.

The International Affairs Team is in charge of international partnerships, exchange programs, international visits and protocol, and non-degree programs including Yonsei's international Summer and Winter Schools.

The International Student and Scholar Support Team provides international faculty support and is in charge of government scholarships for international degree-seeking students.

The International Admissions Team oversees international and overseas Korean students' admission to the undergraduate degree program.



# INCREASING PROFILE THROUGH GLOBAL ALLIANCES

Yonsei University is actively involved in numerous international academic and research networks and has established the 3 Campus East Asia program to promote student exchange in a region-focused program. These global partnerships expand Yonsei's international outreach and accessibility to those interested in East Asia.

## THE ASSOCIATION OF EAST ASIAN RESEARCH UNIVERSITIES (AEARU)



Yonsei proudly joined AEARU in 2014. Through this network, it will further expand its participation in the development of the East Asian region's research and leadership.

Sharing resources and academic goals, this growing network of East Asian universities seek to promote regional social, cultural, and economic progress. Since 1996, AEARU members have rotated roles hosting symposia, student camps, workshops, and competitions in order to broaden higher education opportunities in the region.

## THE ASSOCIATION OF PACIFIC RIM UNIVERSITIES (APRU)



A member since 2013, Yonsei University has opened its doors to explore opportunities for international collaboration and discourse beyond the Asian region to a more global scale with the APRU.

Founded in 1997, the APRU has expanded to include over fifty prestigious research universities from sixteen nations. Reaching beyond national and regional boundaries, this network addresses the challenges and opportunities for the international higher education community and functions not only as a network of shared resources and communication among universities, but also as an advisory body to social and governmental organizations and businesses.

## CONTACT

International Affairs Team  
T 82-2-2123-3486  
E protocol@yonsei.ac.kr  
W oia.yonsei.ac.kr



## 3 CAMPUS EAST ASIA

The 3 Campus East Asia program brings together students from world-leading universities in a unique East Asian study abroad program held on the campuses of three of the most prestigious academic institutions in East Asia: Keio University in Japan, Yonsei University in Korea, and the University of Hong Kong in China.

Participating students both from within the East Asia region (Korea, Japan, China) and from outside (the United States and Europe) are afforded a truly unique opportunity to learn collectively about East Asia. They experience, analyze and comprehend East Asia from a genuinely comparative perspective by living and studying as a multinational and multicultural community on all three campuses.

Students have the option of enrolling in either a full one year or half year schedule under a rigorous, innovative and coordinated curriculum. This East Asia-focused academic program of learning, residing and working together enables some of the world's most exceptionally talented students to cultivate the intellectual and intercultural breadth and depth that will equip them as future global leaders. This network of students from Japan, Korea, China, the US and the UK acts as a valuable bridge between East Asia and the world.

## International Partner Universities

Prestigious universities from the United States (Cornell University, Georgetown University, Princeton University, and University of Southern California) and Europe (Kings College London, University of Geneva, and the University of Edinburgh) have joined the 3 Campus East Asia program since it was launched in 2008. International partner universities form a critical part of the network and actively send their students to participate in the 3-Campus student exchange program.





# PROMOTING THE YONSEI BRAND

## International Events

### GLOBAL LOUNGE RE-LOCATION

In April, Yonsei celebrated the re-location of Global Lounge from the Student Union Building to the Commons.

Since its opening in November 2002, the Global Lounge has been the most important and popular international student facility on campus in promoting global cultural diversity and has been benchmarked by many institutions both in Korea and abroad.

Now conveniently located in the Commons, the Global Lounge serves as the link between the international community and Yonsei University.

With its large exchange network, it is a multi-functional space to foster an international perspective and sense for students and provides various one-stop services to international students.

### GLOBAL ENGAGEMENT AND EMPOWERMENT FORUM

The inaugural Global Engagement and Empowerment Forum on Sustainable Development was held on February 7-8 cohosted by the Institute for Global Engagement and Empowerment of Yonsei and the Ban Ki-moon Centre for Global Citizens.

“Putting People and Planet at the Center” as its main theme, the Forum served as a platform for all stakeholders and actors to collaborate towards accomplishing the United Nations’ 2030 Agenda for Sustainable Development.

In partnership with the International Olympic Committee and the 2018 Pyeongchang Winter Olympic games, the Forum attracted many renowned leaders including the former and current Secretary-Generals of the United Nations Ban Ki-moon and Antonio Guterres, the Founder and Executive Chairman of Alibaba Jack Ma, Director of the Center for Sustainable Development at Columbia University Jeffrey Sachs and more.

### INTERNATIONAL SCHOLARS’ DAY

On June 21, the Office of International Affairs organized a festive banquet at the President’s Residence for the 7th International Scholars’ Day and invited international faculty in Yonsei to celebrate their achievements and express gratitude for their dedication and devotion to academia.

1. Global Lounge Re-location
2. Global Engagement and Empowerment Forum
3. Honorary Chairman of IGEE, Ban Ki-moon
4. International Scholars’ Day

## Key Visits

One of Yonsei’s international initiatives is to expand and maintain collaborative partnerships in student/faculty/staff exchange and joint research with the world’s leading educational institutions. To promote this effort, OIA hosted over 400 visitors on campus in 2017 and visited leading institutions in regions of strategic interest to open key discussions and build foundations of mutual friendship.

### STRENGTHENING AREAS OF COLLABORATION WITH PARTNER INSTITUTIONS



### PROMOTING GLOBAL ENGAGEMENT



1. University of California Education Abroad Program
2. Asian University for Women
3. Stanford University
4. Free University of Berlin
5. 21st APRU Annual Presidents Meeting
6. 16th Korea-Japan Millennium Forum
7. APRU-APEC University Leaders’ Forum



# BILATERAL PARTNERSHIPS

Yonsei boasts of strong international networks with more than 650 foreign partner institutions in 70 countries worldwide.

Over  
**650**  
Foreign Partner institutions  
  
**70**  
Countries

Below is the full list of university-wide agreements and a partial list of department-specific agreements by continent and country. While the former is handled by the central Office of International Affairs (OIA), the latter is initiated and implemented by the specific department in consultation with OIA.

Aside from these partner universities with which we have a direct partnership or MOU, Yonsei also has student exchange arrangements with fellow member universities registered with international partner organizations CIEE (Council on International Educational Exchange), ISEP (International Student Exchange Program), UCEAP (University of California Education Abroad Program), and USAC (University Studies Abroad Consortium).

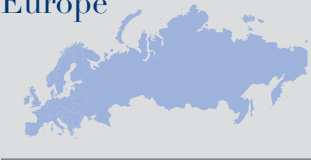


Students from universities that are not listed here can also study at Yonsei as visiting students through our various study abroad programs.



# YONSEI'S GLOBAL ALLIANCE NETWORK

## Europe



- Austria**
  - FH Kufstein Tirol University of Applied Sciences
  - University of Applied Sciences Upper Austria
  - University of Applied Sciences Wiener Neustadt
  - University of Vienna
  - Vienna University of Economics and Business
- Belgium**
  - Universite de Catholique de Louvain
- Denmark**
  - Aalborg University
  - University of Copenhagen
  - University of Greenland
- Finland**
  - Aalto University
  - University of Eastern Finland
  - University of Helsinki
  - University of Jyväskylä
- France**
  - Ecole Supérieure du Commerce Extérieur (ESCE)
  - Ecole Supérieure de Lyon
  - France Business School Amiens Campus
  - France Business School Campus de Tours
  - INSA de Lyon
  - ISC Paris School of Management
  - KEDGE Business School
  - Lille 2 University of Health and Law
  - ParisTech Institute of Science and Technology
  - PSB Paris School of Business
  - Sciences Po
  - The University of Bordeaux
  - The University Paris-Sud
  - Université Paris-Saclay
- Germany**
  - Eberhard Karls Universität Tübingen
  - European Business School
  - Freie Universität Berlin
  - Humboldt-Universität zu Berlin
  - Leibniz Universität Hannover
  - Ludwig-Maximilians-Universität München
  - Pforzheim University
  - RWTH Aachen University
  - Technische Universität Braunschweig
  - Technische Universität Dresden
  - Technische Universität München
- Hungary**
  - Budapest University of Technology and Economics
- Ireland**
  - Athlone Institute of Technology
  - Dublin Institute of Technology
  - University College Cork
- Italy**
  - Ca' Foscari University of Venice
  - LUISS Guido Carli University
  - Università Bocconi
- Lithuania**
  - Kaunas University of Technology
- Netherlands**
  - Erasmus University
  - Inholland University of Applied Sciences
  - Leiden University
  - Maastricht University
  - Radboud University Nijmegen
  - Saxion University of Applied Sciences
  - The Hague University of Applied Sciences
- Norway**
  - Norwegian School of Economics
  - The University of Oslo
- Poland**
  - Warsaw School of Economics
- Russia**
  - Far Eastern Federal University
  - Lomonosov Moscow State University
  - St. Petersburg State University
- Spain**
  - ESADE
  - Public University of Navarre
  - Universidad Carlos III de Madrid
  - Universitat Autònoma de Barcelona
  - University of Navarra
- Sweden**
  - Jönköping International Business School
  - Kristianstad University
  - Linnaeus University
  - Lund University
  - Stockholm School of Economics
  - University of Gothenburg
- Switzerland**
  - Uppsala University
  - University of Basel
  - University of Geneva
  - University of Lausanne
  - The University of Zurich
- University of Erfurt**

- United Kingdom**
  - Coventry University
  - Durham University
  - King's College London
  - Kingston University
  - SOAS University of London
  - The University of Edinburgh
  - The University of Sheffield
  - University of Aberdeen
  - University of Birmingham
  - University of Bath
  - University of Bristol
  - University of Exeter
  - University of Glasgow
  - University of Hertfordshire
  - University of Leeds
  - University of Oxford
  - University of Southampton
  - University of St Andrews
- Cambodia**
  - Life University
  - Royal University of Phnom Penh
- China**
  - Beijing Normal University
  - City University of Hong Kong
  - Dalian University of Technology
  - Fudan University
  - Harbin Institute of Technology
  - Huazhong University of Science and Technology
  - Jilin University
  - Nanjing University
  - Nankai University
  - North China Electric Power University
  - Peking University
  - Renmin University of China
  - Shandong University
  - Shanghai Jiao Tong University
  - Sichuan University
  - Sun Yat-sen University
  - The Chinese University of Hong Kong
  - The Hong Kong Polytechnic University
  - The Hong Kong University of Science and Technology
  - The University of Hong Kong
  - Tsinghua University
  - University of Science and Technology of China
  - Wuhan University
  - Yanbian University
  - Yanbian University of Science and Technology
  - Zhejiang Normal University
  - Zhejiang University
- Australia**
  - Australian National University
  - Bond University
  - Curtin University
  - Deakin University
  - Griffith University
  - La Trobe University
  - Monash University
  - Murdoch University
  - The University of Adelaide
  - The University of New South Wales
  - The University of Queensland
  - The University of Sydney
  - University of Technology, Sydney
  - The University of Western Australia
- India**
  - Indian Institute of Technology Bombay
  - Jawaharlal Nehru University
- Indonesia**
  - Universitas Indonesia
- Iran**
  - University of Tehran

## Oceania



- New Zealand**
  - The University of Auckland
  - The University of Waikato
  - University of Canterbury
  - University of Otago

## Asia



- Afghanistan**
  - Kabul University
- Brunei**
  - Universiti Brunei Darussalam

- Japan**
  - Akita International University
  - Aoyama Gakuin University
  - Chuo University
  - Doshisha University
  - Hitotsubashi University
  - Hokkaido University
  - Hosei University
  - International Christian University
  - International University of Japan
  - Keio University
  - Kwansai Gakuin University
  - Kyoto University
  - Kyushu University
  - Meiji Gakuin University
  - Meiji University
  - Meiji University
  - Nagasaki University
  - Nagoya University
  - Nanzan University
  - Nihon University



- Osaka University
- Rikkyo University
- Ritsumeikan Asia Pacific University
- Ritsumeikan University
- Sophia University
- Surugadai University
- The National Graduate Institute for Policy Studies
- The University of Tokyo
- The University of Tsukuba
- Tohoku University
- Tokyo Institute of Technology
- Tokyo University of Foreign Studies
- University of the Ryukyus
- Waseda University
- Yokohama National University

**Jordan**

- The University of Jordan

**Kazakhstan**

- Al-Farabi Kazakh National University
- Karaganda State University
- Kazakh Economic University
- KIMEP University

**Malaysia**

- University of Malaya

**Mongolia**

- Huree Institute of Information and Communication Technology
- Mongolia International University
- Mongolian University of Science and Technology
- Ulaanbaatar University

**Nepal**

- Kathmandu University
- Tribhuvan University

**Philippines**

- Ateneo de Manila University
- University of the Philippines

**Singapore**

- Nanyang Technological University
- National University of Singapore
- Singapore Management University
- Singapore University of Technology and Design

**Taiwan**

- National Cheng Kung University
- National Chengchi University
- National Sun Yat-sen University
- National Taiwan Normal University
- National Taiwan University
- National Tsing Hua University
- National University of Kaohsiung
- TungHai University

**Thailand**

- Chulalongkorn University
- Thammasat University

**Turkey**

- Kadir Has University
- Koç University

**Vietnam**

- Hanoi University
- Vietnam National University, Hanoi

North America



**Canada**

- Bishop's University
- Brock University
- Dalhousie University
- McGill University
- Simon Fraser University
- The University of British Columbia
- The University of Manitoba
- The University of Western Ontario
- Trent University
- Universite de Montreal
- University of Alberta
- University of Calgary
- University of Toronto
- University of Victoria
- University of Waterloo
- York University

**United States**

Alabama

- The University of Alabama

Arizona

- Arizona State University
- Thunderbird School of Global Management

Boston

- Boston University
- Suffolk University

California

- Azusa Pacific University
- Biola University
- California Institute of the Arts
- California State University System
- University of California, Berkeley
- University of California, Davis
- University of California, Irvine
- University of California, Los Angeles
- University of California, Merced
- University of California, Riverside
- University of California, San Diego
- University of California, San Francisco
- University of California, Santa Barbara
- University of California, Santa Cruz

Connecticut

- University of Connecticut

District of Columbia

- American University
- George Washington University

Florida

- University of Miami
- University of South Florida

Georgia

- Emory University
- Georgia Institute of Technology
- Mercer University
- The University of Georgia

Guam

- University of Guam

Hawaii

- University of Hawaii at Manoa

Illinois

- North Central College
- Northwestern University

- The University of Chicago
- University of Illinois at Urbana-Champaign

Indiana

- Indiana University Bloomington
- Purdue University
- The University of Notre Dame

Iowa

- Cornell College
- Grinnell College
- Iowa State University

Kentucky

- Western Kentucky University

Maryland

- Towson University
- University of Maryland, College Park
- Washington College

Massachusetts

- Brandeis University
- Tufts University
- University of Massachusetts Amherst
- University of Massachusetts Lowell

Michigan

- Michigan State University
- University of Michigan

Minnesota

- St. Cloud State University
- St. Olaf College

- University of Minnesota Morris

Missouri

- Northwest Missouri State University
- Washington University in St. Louis

Montana

- Montana State University

New Hampshire

- Dartmouth College

New Jersey

- New Brunswick Theological Seminary
- Rutgers, The State University of New Jersey

New York

- Baruch College, The City University of New York
- Colgate University
- Cornell University
- Hobart and William Smith Colleges
- Long Island University
- New York University

- Stony Brook University, State University of New York

- Syracuse University
- Union College

- University at Albany, State University of New York

North Carolina

- Duke University
- University of North Carolina at Chapel Hill
- University of North Carolina at Greensboro

Ohio

- Bowling Green State University
- Case Western Reserve University
- The Ohio State University
- The University of Akron
- University of Cincinnati

Oklahoma

- Oklahoma State University

Oregon

- Linfield College
- University of Oregon

Pennsylvania

- Dickinson College
- Temple University
- The University of Scranton
- University of Pennsylvania
- University of Pittsburgh
- Washington and Jefferson College
- Westminster College

Rhode Island

- Roger Williams University

South Carolina

- University of South Carolina

Texas

- Baylor University
- The University of Texas at Austin
- University of Texas at Arlington

Utah

- The University of Utah

Virginia

- College of William and Mary
- George Mason University
- James Madison University
- Old Dominion University
- Randolph-Macon College
- University of Richmond

Washington

- University of Washington
- Western Washington University

Wisconsin

- University of Wisconsin-Madison

South America



**Argentina**

- University of Buenos Aires

**Costa Rica**

- University for Peace

**Mexico**

- CETYS University (Centro de Enseñanza Técnica y Superior)
- ITESO (Instituto Tecnológico y de Estudios Superiores de Occidente)
- Tecnológico de Monterrey
- Universidad de Monterrey
- Universidad Nacional Autónoma de México

Africa



**Zimbabwe**

- University of Zimbabwe

# PROVIDING GLOBAL OPPORTUNITIES FOR STUDENTS





# DEGREE PROGRAMS FOR FOREIGN STUDENTS

Yonsei University continually strives to provide the best international education program in Asia. Its extensive degree programs taught in English challenges students to excel in their respective fields on an international level through its globally renowned faculty members and innovative and extensive curriculum.

## UNDERWOOD INTERNATIONAL COLLEGE

Yonsei University established Underwood International College (UIC) in 2005 as a highly-selective, all-English, four-year liberal arts institution, which combines the intimate, elite learning environment of a liberal arts college with the faculty and resources of a top research university in Korea. UIC students choose from an extensive list of classes conducted entirely in English and taught by a distinguished group of international and Korean scholars. With a student body of 2,000 coming from 58 countries, UIC focuses on ensuring that its outstanding students have the intellectual foundation to become exceptional leaders capable of changing the world for the better. UIC students are prepared to meet the complex challenges facing the twenty-first century through its humanities-based, interdisciplinary Common Curriculum and its 16 majors in five divisions under three fields.

### Underwood Field

- **Underwood Division:** Comparative Literature and Culture; Economics; International Studies; Political Science and International Relations; Life Science and Biotechnology

### Humanities, Arts, and Social Sciences Field

- **Asian Studies Division:** Asian Studies
- **Techno-Art Division:** Information and Interaction Design; Creative Technology Management; Culture and Design Management
- **Integrated Social Sciences Division:** Justice and Civil Leadership; Quantitative Risk Management; Science, Technology, and Policy; Sustainable Development and Cooperation

### Integrated Science and Engineering Field

- **Integrated Science and Engineering Division:** Bio-Convergence; Energy & Environmental Science and Engineering; Nano Science and Engineering

[W uic.yonsei.ac.kr](http://W uic.yonsei.ac.kr)

[Facebook uic.yonseiuniversity](https://www.facebook.com/uic.yonseiuniversity)

[Instagram uicyonsei](https://www.instagram.com/uicyonsei)



## GRADUATE SCHOOL OF INTERNATIONAL STUDIES

The Graduate School of International Studies at Yonsei University was established in 1987 as a pioneer of professional studies programs in Korea. The founding motivation of Yonsei GSIS was to meet the growing global demand for international academic institutions and to train individuals to become global experts.

Yonsei GSIS offers three programs: Korean Studies, International Cooperation, and International Trade, Finance and Management. The GSIS faculty is composed of Korea's leading academics with a wide range of expertise in their fields. The dynamic and rigorous curriculum equips students with theoretical knowledge and practical skills necessary to excel globally in both the private and public sectors.

The program maintains a highly diverse student body with 43% Korean students and 57% of foreign students from 49 different countries. In 1999, Yonsei GSIS earned the distinction of being a "university to produce international leaders" by the Ministry of Education, and was awarded the status of "official professional school" in recognition of its global competitiveness and establishment of renowned doctoral programs. Yonsei GSIS continues to maintain its prestige and capability in providing high-quality international education, in conjunction with promoting efforts towards fostering competent individuals in various areas of international studies.

[W gsis.yonsei.ac.kr](http://W gsis.yonsei.ac.kr)



## GLOBAL MBA

The Global MBA (GMBA) program aims to produce creative global leaders equipped with expert knowledge of management theories and a variety of business cases. In addition to its innovative curriculum, GMBA will provide a truly global education with its students coming from diverse cultural backgrounds. The students will be exposed to a "global" experience through working with their international teammates on different projects. Furthermore, Korean students will be sent on exchange programs to the United States, Europe, or Asia depending on their interests. During the same period, their international classmates will become Northeast Asia (Korea, China, and Japan) experts by taking numerous electives focusing on the region and on Korean companies in particular. The program also will allow students to experience the world through practical experience such as internships and case competitions.

Yonsei Global MBA has become the first and only MBA program in Korea to be ranked in the "World's Top 100 Full-time MBAs" by the Economist for four consecutive years since 2011.

[W mba.yonsei.ac.kr](http://W mba.yonsei.ac.kr)

## GLOBAL LEADERSHIP DIVISION

Yonsei University has successfully fostered a new international human resource within Korea's higher education environment, by creating an entirely new department, the Global Leadership Division (GLD). This new program has constructed a system for international and overseas Korean students who may not be fully familiar with Korean culture, to be able to adapt quickly to new policies and a new educational environment. With this, we commit ourselves to strengthening our students' competitive skill globally. Global Leadership Division students are able to study mainly 'Korean Culture', 'International Commerce', or 'Korean Culture and Commerce'; creating a converged education of both Korea and other countries. Aside from this, students are provided with the opportunity to take on a 'Self-designed major' which is similar to a minor, or instead a double major. Within Yonsei's Global Leadership Division, students are not only able to grow academically, but humanitarially as well, through the education and guidance system that includes students' GLD Faculties, Academic Advisors, and Residential Masters that give the utmost support to each student.

International Commerce: Focuses on the study of global politics, business, society and further discussion and research on the problems of international commerce through the understanding of the reality that was faced till the present day.

Korean Culture: Focuses on conversation and communication between different cultures. The ultimate goal is to foster a culture refined leader through research on cultural heritage and Korean history and spirit based on liberal Arts education.

[W gld.yonsei.ac.kr](http://W gld.yonsei.ac.kr)





# Study Abroad At Yonsei

## Welcome to Yonsei University!

Through Yonsei University's exchange and visiting student programs, students can study at Korea's top university located in the heart of Seoul for as long as one full year.

In addition to achieving academic excellence, international students are also exposed to a beautiful and culturally rich environment and can share special memories and experiences of Korean culture by participating in various Yonsei clubs and activities.

## Definitions

### EXCHANGE STUDENT

Students can apply as an exchange student if their home university has a bilateral student exchange agreement with Yonsei University. An official nomination should be submitted by the home university's international office, and tuition is paid to the home university.

### VISITING STUDENT (FEE-PAYING STUDENT)

Visiting students are those who are planning to attend Yonsei for a semester or two but not through the formal student exchange channel. Tuition is paid to the host university, Yonsei University, and the application and documentation fees should be paid at the time of application.



## Application and Admission

### Minimum GPA for Application

- A. CGPA must be over 2.5 on a 4.0
- B. ECTS (C or above)

### Minimum Language Requirements

Students must provide scores for at least one of the following proficiency test scores (Korean or English):

English	
TOEFL	550 PBT, 213 CBT, 79 IBT
IETLS	6.5

Korean	
KLAT	4
TOPIK	4

\* Note: Native English speakers or English degree program students are exempt.

### Semester Fulfillment Requirement

This program is open to four-year college or university students who are currently studying at their home universities as full-time students, and have completed at least two semesters (or the equivalent) before the nomination / application period.

For transfer students or graduate students, a minimum of one semester's results from the transferred university must appear on the official transcripts.

### Application Procedure

1. Contact the international programs office at your home university.
2. Check whether Yonsei is approved by your home university for study abroad.
3. Once you are selected by your home university to participate in an exchange program, your home university advisor will nominate you on our system.
4. Once the nomination is received at Yonsei, you will be given access to our online application system.
5. Fill out the online application form and upload all necessary documents online.
6. Send the following documents in original (visiting students only):
  - Official Transcript
  - Proof of Language Proficiency (if any)
7. Official admission confirmation will be announced in June for fall semester or December for spring semester.
8. Submit proof of medical insurance on our application system.

\* Steps 3 and 4 apply only to individuals applying as exchange students.

### Application Deadlines

- Spring Semester Admission : late October
- Fall Semester Admission: late April

\* Refer to the OIA homepage for updates and specific deadlines.





### Searching for Courses Offered in English

#### Through the Yonsei Portal System

1. Visit [portal.yonsei.ac.kr](http://portal.yonsei.ac.kr)
2. Click English in the upper right hand corner.
3. Click ‘Course Catalog and Syllabus’
4. Choose a program and department, check ‘English Course Only’ and click the search icon.

\* Course offerings for upcoming semesters will be available in July for fall semesters and in December for spring semesters.

\* ㉔ in the ‘Ref.’ column in Portal indicates a course offered in English.

\* Due to limited capacity, students should prepare alternative courses in the case that class is full or cancelled.

## Academics

### Academic Calendar Overview

	Spring	Fall
Dorms Open	late Feb	late Aug
Classes Begin	Mar 2	Sept 1
Classes End	early June	early Dec
Final Exams	mid June (2 weeks)	mid Dec (2 weeks)
Dorms Close	immediately following exam period	

### Course Load

- Undergraduate: 9 - 18 credits  
(for exchange students taking Korean Language course: maximum 12 credits)
- Graduate: 9 - 15 credits (may vary by school)

### Available Courses & Faculties

- Korean Studies
- East Asian Studies
- Politics and Culture
- Business & Economics
- Science & Engineering
- Korean Language (KLI)

\* Students may take a maximum of four courses per semester under the School of Business. Restrictions may vary depending on types and levels of exchange agreements.

### Restricted Courses & Faculties

- Medicine / Dentistry / Nursing / Pharmacy
- Music
- Law
- MBA

### Transcript Issuance

- Spring semester: late July
- Fall semester: late January

For more information, visit [oia.yonsei.ac.kr](http://oia.yonsei.ac.kr) and click on “Transcript Requests”.

## Housing and General Information

### On-campus Housing (SK Global House / International House)

Students who are interested in on-campus housing are encouraged to apply online as soon as the application is available. For more information and prices for on-campus housing options, visit the housing office homepage.

#### 2018 Housing Application Period

- Spring (March) semester:  
December 22, 2017 - January 5, 2018
- Fall (September) semester:  
June 12, 2018 - June 30, 2018

### Estimated Living Expenses (semester)\*

Housing	KRW 1,785,000 **
Meals	KRW 2,000,000
Books & Supplies	KRW 400,000
Transportation	KRW 400,000
<b>Total</b>	<b>KRW 4,585,000</b>

\* Excludes tuition

\*\*SK Global House double room rate

Note: Above costs are subject to change. Tuition for one semester as a visiting student is KRW 5,000,000, plus an application fee of KRW 150,000.

### Visa

Students must apply for a student visa (D-2) from a local Korean Embassy or Korean Consulate in order to study at Yonsei University, and are responsible for completion of visa processing prior to arrival in Korea.

1. Visit [www.hikorea.go.kr](http://www.hikorea.go.kr)
2. In the banner located at the top of the page, locate ‘Information’ -> Immigration Guide
3. Find the ‘Education’ category in the ‘Basics of Immigration’ chart and click the button indicating a stay of more than 91 days.
4. Refer to the ‘Overseas Study (D-2)’ eligibility/ requirements/documents.

### Medical Insurance

All students must own health insurance that covers the period during their stay in Korea. Yonsei University does not offer health insurance.

### Orientation

Orientation is mandatory for all students. The overall program provides information on course registration, academic schedule, academic regulations, foreigner registration and various student services, such as student counseling.

### CONTACT

#### Housing Office

T +82-2-2123-7481  
E [skghouse@yonsei.ac.kr](mailto:skghouse@yonsei.ac.kr)  
W [ih.yonsei.ac.kr](http://ih.yonsei.ac.kr)

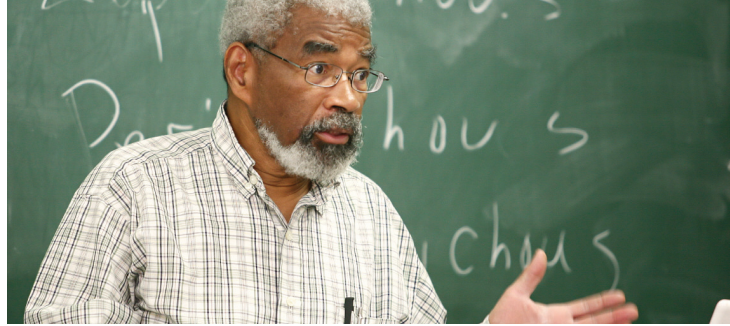
#### Visiting Student Inquiries

T +82-2-2123-6493  
E [study@yonsei.ac.kr](mailto:study@yonsei.ac.kr)

#### Exchange Student Inquiries

T +82-2-2123-4704  
E [sap@yonsei.ac.kr](mailto:sap@yonsei.ac.kr)





# Yonsei International Summer School

YISS offers a wide range of courses including the arts, culture, humanities, Asian and Korean studies, international politics and economics, global management, science and technology, and environmental studies.

## COURSES

100 courses

7 different areas

\* Courses are offered in English.  
\* Course syllabi are available at the YISS website.

## PROGRAM

The Yonsei International Summer School (YISS) opened its doors in 1985, and since then, it has become an integral part of campus life based on a unique blend of Korean and global cultures. YISS continues to grow and evolve, accommodating the needs of a rapidly changing student body and meeting the challenges of a fast-paced global society.

Prestigious professors from such universities as Oxford, Princeton, New York University, Georgetown, University of Chicago, UC Berkeley, UC Los Angeles, King's College London, London School of Economics, ESSEC Business School, Johns Hopkins, Aarhus and Nanyang Technological University teach at the program.

The 2018 program has been designed to satisfy growing interest in the arts and humanities while also offering cutting-edge classes in management and economics, global issues, history, social sciences, and science and technology for its over 1,400 students.

YISS invites students to experience the legendary "Yonsei Spirit" and to join us for an unforgettable summer in the heart of Seoul. Participants make life-long friends, build new networks, expand and deepen academic and cultural horizons, and experience life in one of Asia's trendiest yet largely undiscovered metropolises of 10 million.

## ACADEMIC CALENDAR 2018

Application Period	Jan 3 - May 16
Application Fee	May 16
Payment Deadline	
Tuition Payment Deadline	May 25
Field Trip	Jun 26 - 28
Orientation	Jun 29
Classes(6-week)	Jul 3 - Aug 9
Classes(4-week)	Jul 3 - Jul 26

- Course load: 2 - 3 courses (3 credits each)
- Classes: 4 days per week
- Course hour: 100 minutes per day
- Optional cultural activities: Field trips and special activities

## FEES

Mandatory		
Application Fee	KRW 100,000	Due May 16
Tuition Fee(3 courses)	KRW 3,600,000	
Tuition Fee(2 courses)	KRW 3,000,000	Due May 25
<b>Total(3 courses)</b>	<b>KRW 3,600,000</b>	
<b>Total(2 courses)</b>	<b>KRW 3,100,000</b>	

Optional		
Field Trip Fee	KRW 500,000	
Housing Fee (6 weeks)	KRW 860,000	Double room
Housing Fee (4 weeks)	KRW 720,000	On-campus

\* Optional fees are subject to change.

## Early Enrollment Benefits

By submitting the online application, application fee payment, and official transcript prior to the early registration deadline (Feb 28), students enrolling in YISS are eligible to receive a KRW 200,000 deduction to the tuition fee.

## Re-Enrollment Benefits

Students who have already participated in the YISS program are eligible to receive a KRW 200,000 deduction from their tuition fees. The deduction will be applied after receiving final approval from the YISS office.

\* Early enrollment and re-enrollment benefits cannot be duplicated.



## HOUSING

Due to limited availability, students are recommended to apply for housing in advance at the housing website ([ih.yonsei.ac.kr](http://ih.yonsei.ac.kr)) soon after receiving their admission letter by email.

## SCHOLARSHIPS

Fee-paying students are eligible to apply for scholarships. Exchange students are not eligible. Those who withdraw from the program will not receive any awarded scholarships.

## Scholastic Awards

Students who earn A+ in all courses at YISS are eligible to receive KRW 1,200,000(3 courses) or KRW 600,000(2 courses) for academic excellence.

## Alumni Scholarship

Students whose parents are graduates of Yonsei University are eligible to receive KRW 400,000 provided by the Yonsei Alumni Association.

## Kim Suk-Hi and Do-Sim Scholarship

A need-based scholarship donated by Professor Suk-Hi Kim and his wife, Do-Sim, is granted to 3 students in the amount of KRW 1,000,000 tuition support along with an on-campus housing fee of KRW 860,000 for 6 weeks or KRW 720,000 for 4 weeks.

## CONTACT

International Affairs Team

T +82-2-2123-3535

F +82-2-2123-8706

E [summer@yonsei.ac.kr](mailto:summer@yonsei.ac.kr)

W [summer.yonsei.ac.kr](http://summer.yonsei.ac.kr)

[www.facebook.com/yonseisummer](https://www.facebook.com/yonseisummer)





# Winter Abroad at Yonsei

Winter Abroad at Yonsei is a short-term study abroad program that allows students to earn credits while participating in fun sports and cultural activities during winter break.

### PROGRAM

Yonsei University offers a 6-week winter program at its Sinchon campus for international students who would like to enjoy the winter in Seoul. The winter program is composed of two separate 3-week sessions, with intensive morning coursework and unique afternoon Korean language and Taekwondo classes. On the weekend, participants can enjoy Korean winter activities. It will be an excellent opportunity to catch up with coursework, meet professors in an intimate setting, and enjoy the companionship of participants from all over the world.

### SESSION TIMELINE

- **Session 1:** Late December to mid-January
- **Session 2:** Mid-January to mid-February
  - Students have the option to take either one or both sessions
  - Refer to [winter.yonsei.ac.kr](http://winter.yonsei.ac.kr) for the most current dates and deadlines

### SAMPLE COURSE CATALOG

#### Session 1

Area	Course Title	Credit
General Studies	Asian Art History	3
	East Asian International Relations	3
	Eastern Civilization	3
	Financial Accounting	3
	Introductory Psychology	3
	Principles of Microeconomics	3
	Social Psychology	3
Korean Studies	Strategic Management	3
	Korean Development	3
Korean Language	Korean Modern Literature	3
	Korean Language 1	1
Korean Language	Korean Language 2	1
	Korean Language 3	1
Taekwondo	Taekwondo 1	1

#### Session 2

Area	Course Title	Credit
General Studies	Entrepreneurship and Management	3
	Strategic Management	3
Korean Studies	Korean Economy	3
	Modern Korean History	3
Korean Language	Korean Language 1	1
	Korean Language 2	1
	Korean Language 3	1
Taekwondo	Taekwondo 1	1

#### • CLASS SCHEDULE

	Mon	Tue	Wed	Thu	Fri
Academic Course (3 credits)	09:30 – 12:00				
Korean Language or Taekwondo (1 credit)	13:30 – 14:30*				no class

\* 13:30-15:30 on the last day of each session

### ONE-DAY TRIPS

During each session, field trips will be organized for the program participants. Details will be announced through our website ([winter.yonsei.ac.kr](http://winter.yonsei.ac.kr)).

**DMZ Tour:** a visit to the demilitarized zone between South and North Korea

**Ski Trip:** a visit to a nearby ski resort to enjoy ski, snowboard, or sled-ding

### FEES

#### Mandatory

Application Fee	KRW 100,000	Due mid-Nov.
Tuition Fee (per session)	KRW 1,600,000	Due late Nov.

#### Optional

One Day Trip Fee	TBA
Housing Fee	TBA

\* Fees subject to change.

### CONTACT

#### International Affairs Team

T +82-2-2123-3535  
F +82-2-2123-8706  
E [iwinter@yonsei.ac.kr](mailto:iwinter@yonsei.ac.kr)  
W [winter.yonsei.ac.kr](http://winter.yonsei.ac.kr)  
[www.facebook.com/yonseiwinter/](https://www.facebook.com/yonseiwinter/)



# SHORT TERM PROGRAMS

The Office of International Affairs (OIA) boasts a wealth of experience in designing short-term special programs for students from overseas partner institutions since 1996. Special programs are offered to enable students from our partner institutions to have unique cultural immersion opportunities through specially designed courses and field trips. Through OIA special programs, students will challenge themselves intellectually and broaden their cultural perspectives.

### RECENT CARRIED PROGRAMS

Program	HOSEI STUDY ABROAD PROGRAM	KEIO SPRING PROGRAM	ST. OLAF GLOBAL SEMESTER
			
Partner Institution	Hosei University, Japan	Keio University, Japan	St. Olaf College, United States
Program Location	Yonsei University, Korea	Yonsei University, Korea	Yonsei University, Korea

### CONTACT

International Affairs Team  
T +82-2-2123-6493  
F +82-2-2123-8706  
E [specialp@yonsei.ac.kr](mailto:specialp@yonsei.ac.kr)



# ENGAGING INTERNATIONAL STUDENTS



# ACTIVITIES

## YONSEI GLOBAL ACTIVITIES

Yonsei Global is an organization affiliated with the OIA, and is comprised of committed Yonsei students interested in international exchange. It runs various programs in order to provide diverse opportunities in a global era for local students to experience and exchange culture while engaging the international community on campus.

### GLOBAL DAY

Every month, the Global Lounge organizes a series of cultural events that feature alternating countries to provide continuous opportunities to learn about and experience different cultures from around the world.

### FIRST STEP TO KOREA

FSK (First Step to Korea) offers the orientation for exchange students visiting Yonsei for the first time. It also provides various performances, as well as introductions to Yonsei Global. Plus, exchange students can travel around Seoul's famous attractions with Yonsei students through Seoul Tour Program.

### LEISURE SPORTS

Make friends and stay fit through sports activities and regular gatherings with both local and exchange students.

### LANGUAGE EXCHANGE

Learners and native speakers alike are given the chance to apply their language skills by chatting and sharing thoughts with peers in foreign languages.

### KOREAN CULTURE EXPERIENCE

Held three times in a semester, international students have a chance to experience different Korean cultural activities, including calligraphy, traditional Korean dance, and Taekwondo.

### GLOBAL ANGEL

This program offers international students the opportunity to volunteer at orphanages and the children's ward at Yonsei Severance Hospital.

### YG UNITED

Futsal enthusiasts of all levels can bond together while practicing and playing at regular gatherings with YG United.

### ONE SHOT

Students interested in traveling Seoul and Korea to take beautiful pictures can join group excursions to prime locations. At the end of the semester, student photos are featured in a photo exhibition in the Global Lounge.

### COMPANY TOUR

See the inside workings of local industries and commercial giants on organized group tours of the facilities.

W [www.yonseiglobal.com](http://www.yonseiglobal.com)



## MENTORS CLUB ACTIVITIES

Mentors Club is a volunteer student organization facilitating Yonsei's buddy program for international students. Those new to Korea can find help adjusting to life in Seoul and make lasting friendships through group excursions. Mentors Club also holds events, parties, and competitions open to all students.

## INTERNATIONAL ONE YONSEI

International One Yonsei is a student club that focuses on supporting degree-seeking international students with enhanced job understandings as well as academic competence.

### ACADEMIC DIVISION

IOY sets up various study sessions for learning language, computer skills, social issues so that international students can further their academic aspects of their interests.

### CAREER PREPARATION DIVISION

International students participate in career preparation activities so that they can increase their chances of obtaining employment in Korea.

### VOLUNTEERING DIVISION

IOY regularly volunteers at the local welfare center to offer their foreign language abilities to the disadvantaged children.

### BUDDY PROGRAM

Each semester, international students are divided into cells where they are paired up with Yonsei students/mentors to adjust to life in Yonsei University and make friendships through various events and programs.

### JOINT CELL MEETINGS

All cells gather together and participate in Mentors Club sports day and talent show after the midterm exam. This joint cell meeting is a chance for all the buddies and mentors to come together and have fun.

### HALLOWEEN PARTY

Mentors Club rent a club at Gangnam or Hongdae and invites international students. Wear wacky costumes and enjoy the spotlight at the Halloween club party.

## AKARAKA & YON-KO FESTIVAL

Join in the fun every semester with Yonsei's spring festival and pep rally, Akaraka, and its annual fall athletic competition where it competes with its rival, Korea University, in soccer, baseball, basketball, rugby, and ice hockey. Wear blue colors and follow the rhythm and beat of school cheers with Yonsei students. OIA and Mentors Club will gladly guide you along and teach all of the dance moves. Have fun and enjoy the Yonsei spirit together with your buddies!





### INTERNATIONAL COUNSELING & COACHING SERVICE

The ICCS is a multicultural counseling and coaching service center for international students. The service provides psychotherapy regarding depression, anxiety, family/relationship issues, and cultural adaptation issues. Counseling is provided in various languages, including English, Chinese, Japanese, and Spanish.

- T +82-70-4040-3081
- E [info@yiccs.or.kr](mailto:info@yiccs.or.kr)
- W [www.yiccs.or.kr](http://www.yiccs.or.kr)

### GENERAL COUNSELING CENTER

The center aims to lead all students at Yonsei by providing healthy coping skills, character-building and communication skills, and self-development through continuous academic research and educational activities on psychological testing, counseling services, and school guidance.

- Location: N 4th Floor, Baekyang Hall (Bldg. 310)
- T +82-2-2123-6688
- E [counsel@yonsei.ac.kr](mailto:counsel@yonsei.ac.kr)
- W [counsel.yonsei.ac.kr](http://counsel.yonsei.ac.kr)

### OPEN & SMART EDUCATION CENTER

The OSE Center helps foreign students adjust to university life and develop learning skills through its peer tutoring program. Korean language learners may also find one-on-one writing counseling through the Center.

#### Tutoring Program

- Location: #N208, Baekyang Hall (Bldg. 310)
- T +82-2-2123-6999
- E [ctllearn@yonsei.ac.kr](mailto:ctllearn@yonsei.ac.kr)

#### Korean Writing

- Location: #N210, Baekyang Hall (Bldg. 310)
- T +82-2-2123-6995
- E [writing@yonsei.ac.kr](mailto:writing@yonsei.ac.kr)

## Global Lounge

Since its opening in November 2002, the Global Lounge has been the most important and popular international student facility on campus in promoting global cultural diversity. Now located in the heart of campus at Baekyangro's new underground area, The Commons, the Global Lounge serves as the link between the international community and Yonsei University. With its large exchange network, it is a multi-functional space to foster an international perspective and sense for students and provides various one-stop services to international students. We seek to inspire imaginative and innovative ideas and transform students to become global citizens that are part of our global community.

- Location: The Commons (Bldg. 130)
- Hours: Weekdays (8 a.m. - 8 p.m.)  
Vacation (9 a.m. - 5 p.m.)
- T +82-2-2123-6496
- E [globalounge@yonsei.ac.kr](mailto:globalounge@yonsei.ac.kr)

### FACILITIES

The main seating area has nine multi-television sets and a seating capacity of 150 people.

### DISCUSSION AREA

An area dedicated to language exchange encourages students who wish to learn foreign languages to communicate only through a determined language of interest.

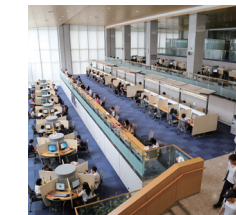
### IHELP

The OIA operates a comprehensive help desk to assist international students and faculty with information on-campus and off-campus living.

## Campus-wide Wi-Fi and Eduroam

Yonsei University is the first campus in the nation to provide a 40G Ethernet network, with wireless bandwidth speed of 1.7 Gbps, to allow uninterrupted internet access from anywhere on campus, including key outdoor areas.

Yonsei is subscribed to Eduroam which allows Yonsei members and visitors to enjoy wireless internet access at educational and research institutes in more than 70 countries worldwide. Users can access the internet by logging in with their usernames and passwords from their home institution.



## Yonsei University Library

The state-of-the-art Yonsei University Library offers a rich array of information resources and a hospitable environment for pursuing discovery and research. The library complex, which contains the Central Library and Yonsei-Samsung Library, provides seating spaces for approximately 6,300 people and 900 computers for library users. Equipped with future-oriented educational and research facilities, the complex's advanced infrastructure has improved the quality of lecture and research support services. The library's collections total more than 2.3 million printed works and 16,700 serials and a variety of electronic resources, including 270 academic databases and 75,000 e-journals, which can be accessed both on and off campus. The innovative Yonsei-Samsung Library ranked first in the overall assessment of the university libraries in Korea announced by the Ministry of Education, Science and Technology in 2010. With all these achievements, the Library has developed into a leading academic information resource center.

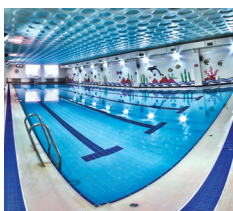


## Yonsei International House

Yonsei International House is a “home-away-from-home” that meets high-quality international service standards. It provides a 24-hour front desk operation and security system, which insure living convenience and security. Students and guests can enjoy various facilities and services within global community network. Yonsei University’s International House (Gukje Haksa) operates the two properties of SK Global House and International House. Featuring updated equipment and facilities, it can accommodate up to 817 students in single and double rooms. The House is available for students from all nationalities registered at any division related to Yonsei University, including undergraduate/graduate/KLI students and visiting professors with relation to Yonsei University. The objective is to create a global environment and recreation within all residents. Although the main language for communication is English, there are many languages spoken in the House. The House has many residential facilities including a communal kitchen, music room, fitness center, coin laundry room, computer room, dry cleaning shop, lounge area, study room, seminar room, video room, and different services which can be used by both residents and non-residents, such as a food court, 24-hour convenience store, flower shop, school supply store, nail shop, and fast food restaurant.

### CONTACT

T +82-2123-7481/4616  
E skghouse@yonsei.ac.kr  
ihouse@yonsei.ac.kr  
W ih.yonsei.ac.kr



## Sports Facilities

International students can enjoy playing sports or working out at the various sports facilities provided on campus. Students can exercise at the fitness center in the SK Global House or at the Fitness Center located in the Gymnasium at a fee. For swimmers, there is a swimming pool in the Physical Education Building that can be used regularly with a monthly membership. Students can play tennis on the six hard courts and eight clay courts located near the North Gate and also reserve the main athletic field to play soccer or baseball.



# ACADEMIC CALENDAR

### SPRING SEMESTER

March	2	Spring Semester Begins
	7 – 9	Course Add & Drop
April	3 – 5	Course Withdrawal
	18 – 24	Mid-term Exam
May	7	Children's Day*
	12	Yonsei Founding Day
	22	Buddha's Birthday*
June	6	Memorial Day*
	8 – 21	Final Exam
	21	Spring Semester Ends
	22	Dorm Check-out

### SUMMER\_YONSEI INTERNATIONAL SUMMER SCHOOL(YISS)

June	29	Orientation
	3	Summer Term Begins
July	3 – 4	Course Add & Drop
	19	Mid-term Exam
August	9	Final Exam
	9	Summer Term Ends

### FALL SEMESTER

September	3	Fall Semester Begins
	6 – 10	Course Add & Drop
	23 – 26	Chuseok(Korean Thanksgiving) Holiday
October	3	National Foundation day
	9	Hangeul Day
	2 – 5	Course Withdrawal
	17 – 23	Mid-term Exam
December	10 – 21	Final Exam
	21	Fall Semester Ends
	22	Dorm Check-out

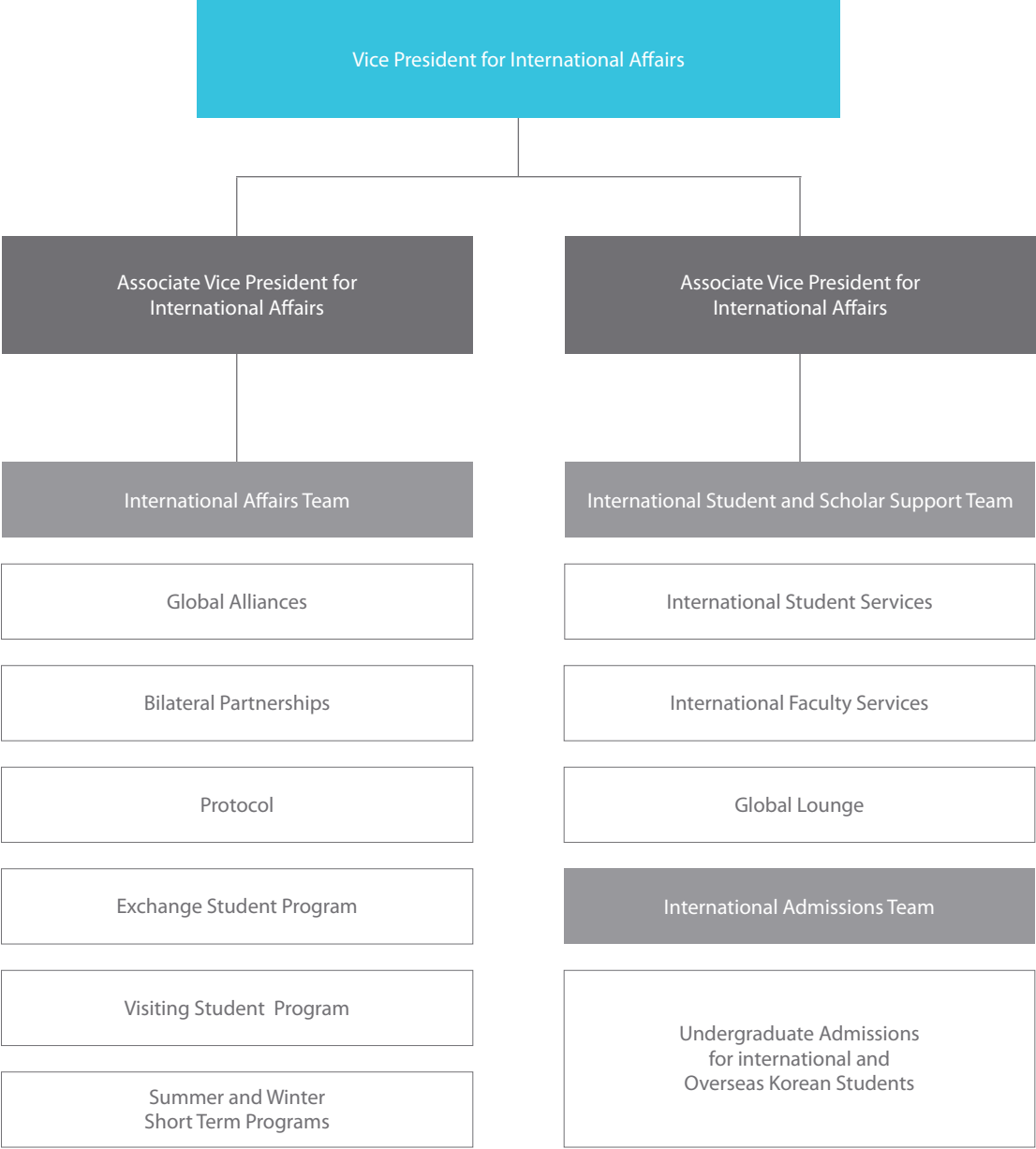
### WINTER\_WINTER ABROAD AT YONSEI(WAY)

December	27	Winter Session 1 Begins (Orientation)
January	17	Winter Session 1 Ends
	21	Winter Session 2 Begins (Orientation)
February	13	Winter Session 2 Ends

(\*) National Holidays  
(\*\*) All dates are subject to change



# OIA ORGANIZATIONAL STRUCTURE



# CONTACT INFORMATION

## ONLINE

W oia.yonsei.ac.kr  
Facebook @yonseiioia  
Instagram @yonseiabroad  
LinkedIn Yonsei University

## MAILING ADDRESS

**Main**  
Office of International Affairs  
Yonsei University  
50 Yonsei-ro, Seodaemun-gu, Seoul 03722 Republic of Korea  
T +82-2-2123-8453

**Office Locations**  
International Affairs Team: Baekyang Hall #S302 (Bldg. 310)  
International Student and Scholar Support Team: Baekyang Hall #S308 (Bldg. 310)  
International Admissions Team: Baekyang Hall #S308 (Bldg. 310)  
Global Lounge: The Commons

## CONTACTS

**Regional Cooperation / Study Abroad – USA & Canada**  
T +82-2-2123-4703, E ysoia@yonsei.ac.kr

**Regional Cooperation / Study Abroad – Europe, ISEP & USAC**  
T +82-2-2123-3983, E abroad@yonsei.ac.kr

**Regional Cooperation / Study Abroad – Asia & Oceania**  
T +82-2-2123-4704, E sap@yonsei.ac.kr

**International Student Service**  
T +82-2-2123-6492, istudent@yonsei.ac.kr

**International Scholar Service**  
T +82-2-2123-3983, E ifaculty@yonsei.ac.kr

**Study Abroad at Yonsei (SAY)**  
Semester Program  
T +82-2-2123-6493, E study@yonsei.ac.kr

**Yonsei International Summer School (YISS)**  
T +82-2-2123-3535, isummer@yonsei.ac.kr

**Winter Abroad at Yonsei (WAY)**  
T +82-2-2123-3535, iwinter@yonsei.ac.kr

**Short Term Programs**  
T +82-2-2123-6493, E specialp@yonsei.ac.kr

**International Planning & Protocol**  
T +82-2-2123-3486, E protocol@yonsei.ac.kr



**Hours:** 9 a.m. - 5 p.m. (Monday - Friday)