

UNIVERSITY OF THE  
WITWATERSRAND,  
JOHANNESBURG

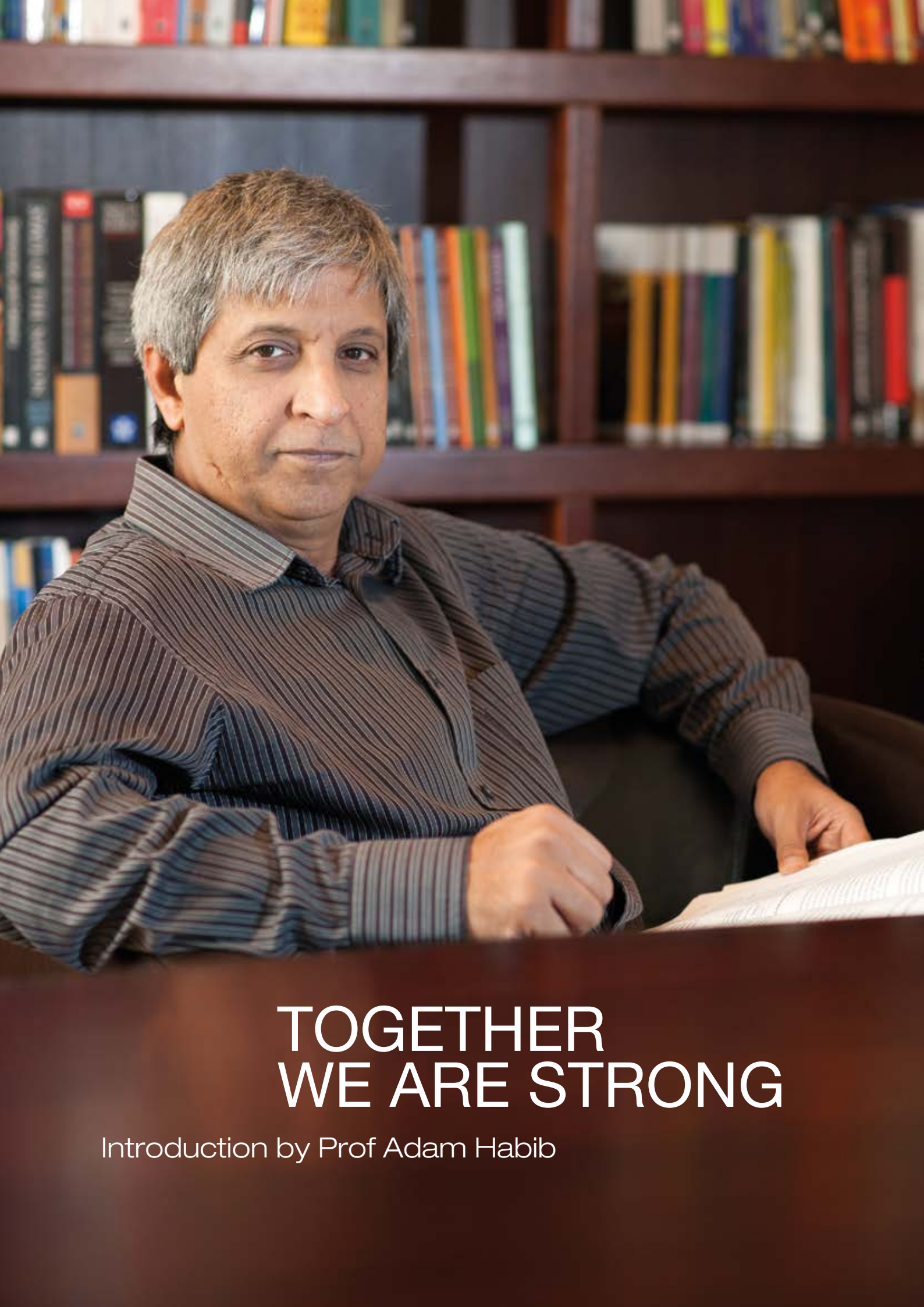


# STRONGER TOGETHER



supporting, giving to,  
and investing in Wits





# TOGETHER WE ARE STRONG

Introduction by Prof Adam Habib

You, our donors, supporters  
and investors, are the  
mainsail of our university.  
You have consistently been  
there for us, helping to sustain  
and advance our globally  
competitive university.

As you are aware, we are facing challenging times, when public funding for higher education is declining, while students demand no fee increases or no fees at all. Universities are caught in a financial pincer, which we have to transcend without compromising academic quality.

We are increasingly reliant on your support to attract and retain talented, innovative academics and students; to offer more scholarships to disadvantaged students with academic potential; to support the research and teaching activities of our university; to update our technology and equipment; and to maintain and develop our facilities and infrastructure.

Your support assists us in ensuring that Wits remains financially sustainable and at the cutting edge of higher education on the continent and globally. Your support also boosts us in our critical role of helping to build a strong, stable, democratic, internationalised society in a country dealing with profound socio-political problems, unemployment and complex issues of decolonisation and transformation.

We are currently required to make hard financial trade-offs that are not simply managerial and strategic; they are also ethical and moral. They include being firm about keeping campus safe and functioning, while proactively addressing inequality in South African society, contributing to job creation and overcoming the capacity constraints that are limiting Africa's economic growth.

In so many ways, Wits has an inestimable role to play in shaping the future of South Africa and the continent. It matters that we engage on issues of freedom and justice. It matters that our communities are ably served by Wits-trained professionals – health professionals, teachers, entrepreneurs, artists, social workers, engineers, accountants, lawyers, IT innovators, environmental scientists, physicists and all the other graduates we produce. It matters that Wits academics contribute globally to relevant research on everything from TB and HIV to climate change, sustainable societies, and the origins of the universe.

Wits matters and we need to find the resources to educate our young people and nurture the best minds on the continent by providing an outstanding education in all the disciplines that we offer. At the same time we need to provide the funding, environment and infrastructure for novel, globally relevant research. At Wits we believe these requirements are mutually inclusive and absolutely necessary in a globalised and globally competitive university environment.

We are ambitious about our teaching, research and impact on a global scale, and I believe that we – our staff and students – and you – our friends, alumni, and supporters – are a powerful community, which, together, can achieve extraordinary breakthroughs and find solutions to the challenges that impact our societies, our environment and our world.

Professor Adam Habib  
Vice-Chancellor and Principal



---

# CONTENTS

---

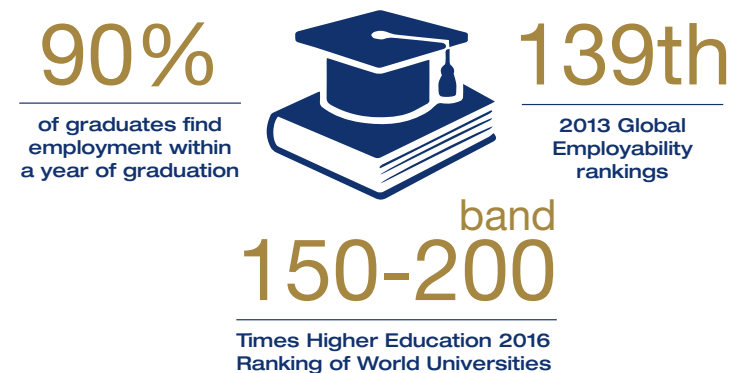
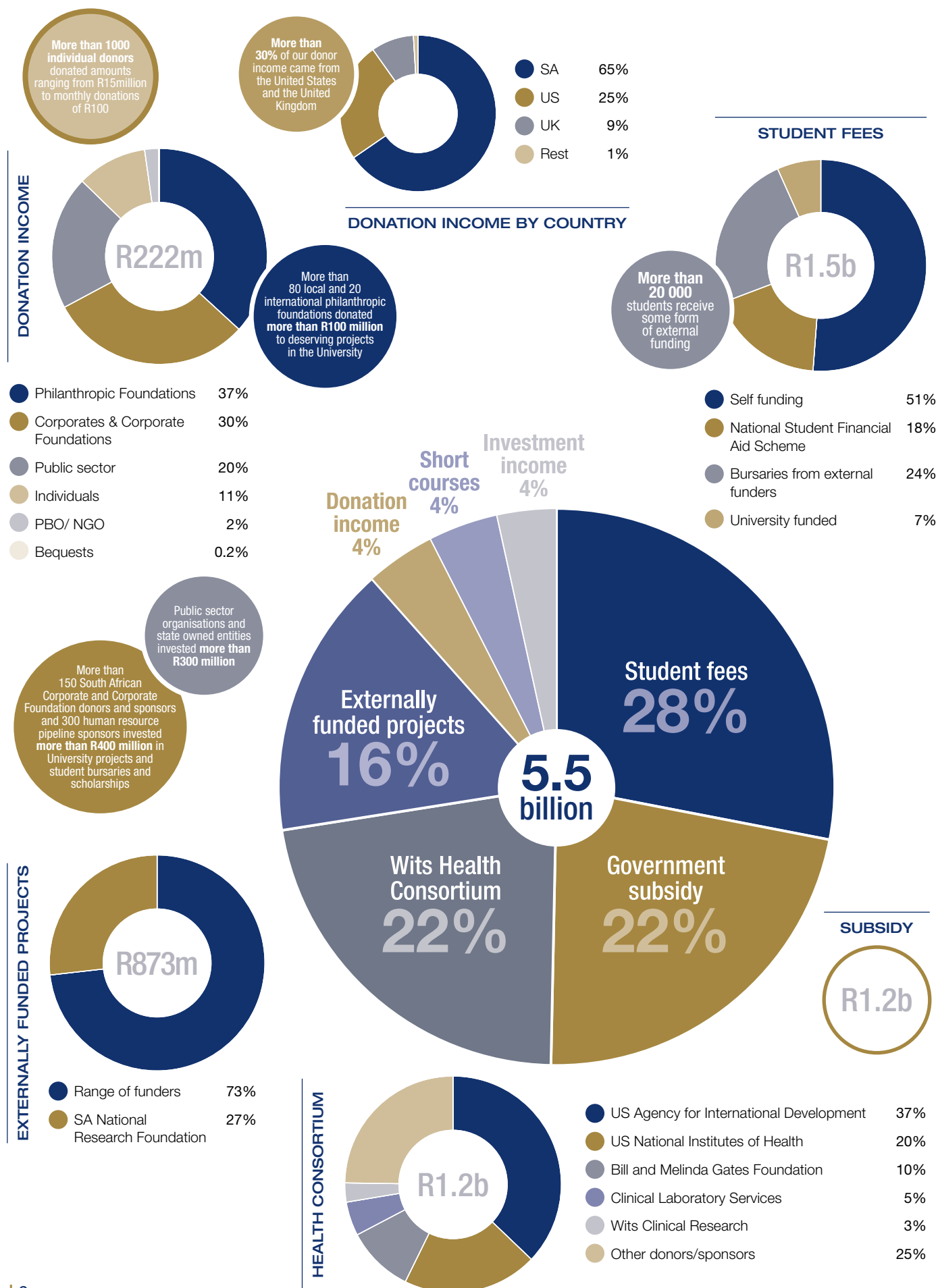
2	<b>INTRODUCTION BY PROF ADAM HABIB</b>
6	<b>DONORS &amp; SPONSORS: INFOGRAPHICS</b>
8	<b>MULTI-FUNDED PARTNERSHIPS</b> Africa's Most Important Digital Technology Hub; Public Health for SA, Public Health for Africa; Transforming Cities – Architecture, Urbanism & the Humanities
13	<b>PORTRAITS OF EXCELLENCE</b> Outstanding postgraduates at Wits
16	<b>PEOPLE GIVE TO PEOPLE</b> Wits Art Museum (WAM)
18	<b>HOPE AND MEANINGFUL CHANGE</b> Academically deserving students in financial need
20	<b>MODES OF GIVING</b> Individual giving Corporate donors & sponsors Philanthropic foundations Trusts, endowment funds & bequests Public sector funding and state-owned enterprises
41	<b>WITS LEADS THE WORLD</b>
42	<b>B-BEEE INVESTMENT SOLUTIONS</b>
43	<b>WAYS TO GIVE TO AND SUPPORT WITS</b>
44	<b>HOW TO GIVE</b>
45	<b>HONOURS BOARD OF DONORS &amp; SPONSORS</b>



**STRONGER  
TOGETHER**



# TOTAL WITS GROUP INCOME 2015 - R5.5 BILLION



more than **R2BILLION** invested in new & renovated buildings & infrastructure over the past decade

## WITSINFOGRAPHICS

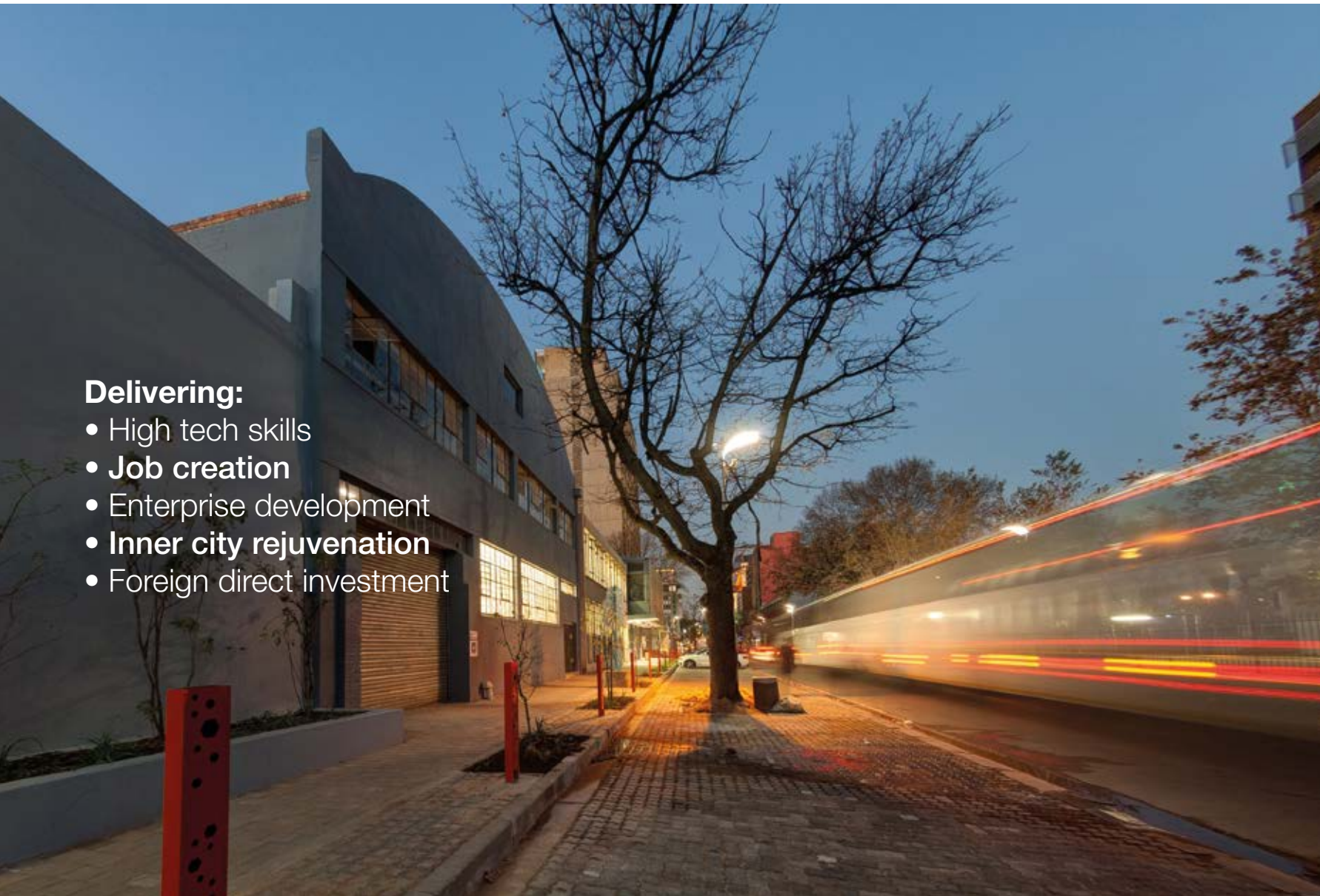


Wits is the largest producer of medical specialists & sub-specialists in South Africa

# AFRICA'S MOST IMPORTANT DIGITAL TECHNOLOGY HUB

## Delivering:

- High tech skills
- **Job creation**
- Enterprise development
- **Inner city rejuvenation**
- Foreign direct investment



Digital Technology Hubs are part of the innovation landscape of most major cities today. Joburg, we are proud to say, has the Wits-led Tshimologong Digital Innovation Hub in Braamfontein's Juta Street. Located two blocks from Wits' main campus, it was launched on 1st September 2016.

"The Tshimologong Precinct will become Africa's most important digital technology hub," says Professor Barry Dwolatzky, head of the Joburg Centre for Software Engineering (JCSE) at Wits, which is driving the project. "It will be a 24/7 space for anyone wanting to acquire digital skills – from entry level to advanced. Here, you

can interact with tech developers, programmers, designers and entrepreneurs to transform ideas into businesses. From digital tools that diagnose disease to systems that assist insurance companies to analyse risk, Tshimologong will develop it."

Tshimologong is a multi-funded partnership between government, industry and academia that will anchor the rejuvenation of West Braamfontein and make a significant contribution to South Africa's job creation and development needs by creating a skilled ICT workforce, encouraging enterprise development and enticing foreign direct investment. More than R60 million of the funding for this ambitious R100 million project has come from the strategic founding partners.

Tshimologong is being created out of five Wits-owned buildings that are being repurposed from warehouses, retail outlets and a nightclub, into training rooms, shared workspaces, events areas, incubators and development pods.

The first major anchor tenant is IBM Research – the world's largest research organisation – which has established its 13th international research organisation here as part of the expansion of IBM Research Africa.

## International networks

Wits has built strong international networks in support of the Tshimologong project, and formal agreements have been signed with the Massachusetts Institute of Technology (MIT), Ryerson University in Canada, the Netherlands Embassy and the Bombay Stock Exchange Institute in India to boost growth opportunities for entrepreneurs and accelerate start-up incubation.

## Significant and impactful Strategic Founding Partners & Sponsors

All funds contributed to Tshimologong qualify as valid contribution to several elements of the revised B-BBEE codes.

### Strategic Founding Partners & Sponsors include:

- The City of Johannesburg
- Gauteng Provincial Department of eGovernment
- IBM Research
- Telkom
- MMI Group
- Microsoft South Africa
- Cisco Systems
- Airports Company of South Africa (ACSA)
- Technology Innovation Agency (TIA)
- Teraco Data Environments
- KMJ Services
- DataCentrix

### Other important partners are:

Absa/Barclays Africa, Motorola Foundation and Google South Africa.

## The emerging digital economy

The Tshimologong Digital Zone is core to the University's drive to position Wits at the cutting edge of the emerging digital economy. Other complementary initiatives include substantial investments into 'big data' analytics capacity across the university in key areas such as Health Sciences, the Square Kilometre Array (SKA) radio telescope, the R32,7million investment in the Telkom Chair in Digital Business at Wits Business School and the multidisciplinary Bachelor of Arts in Game Design. All are key indicators of strong support for this drive.



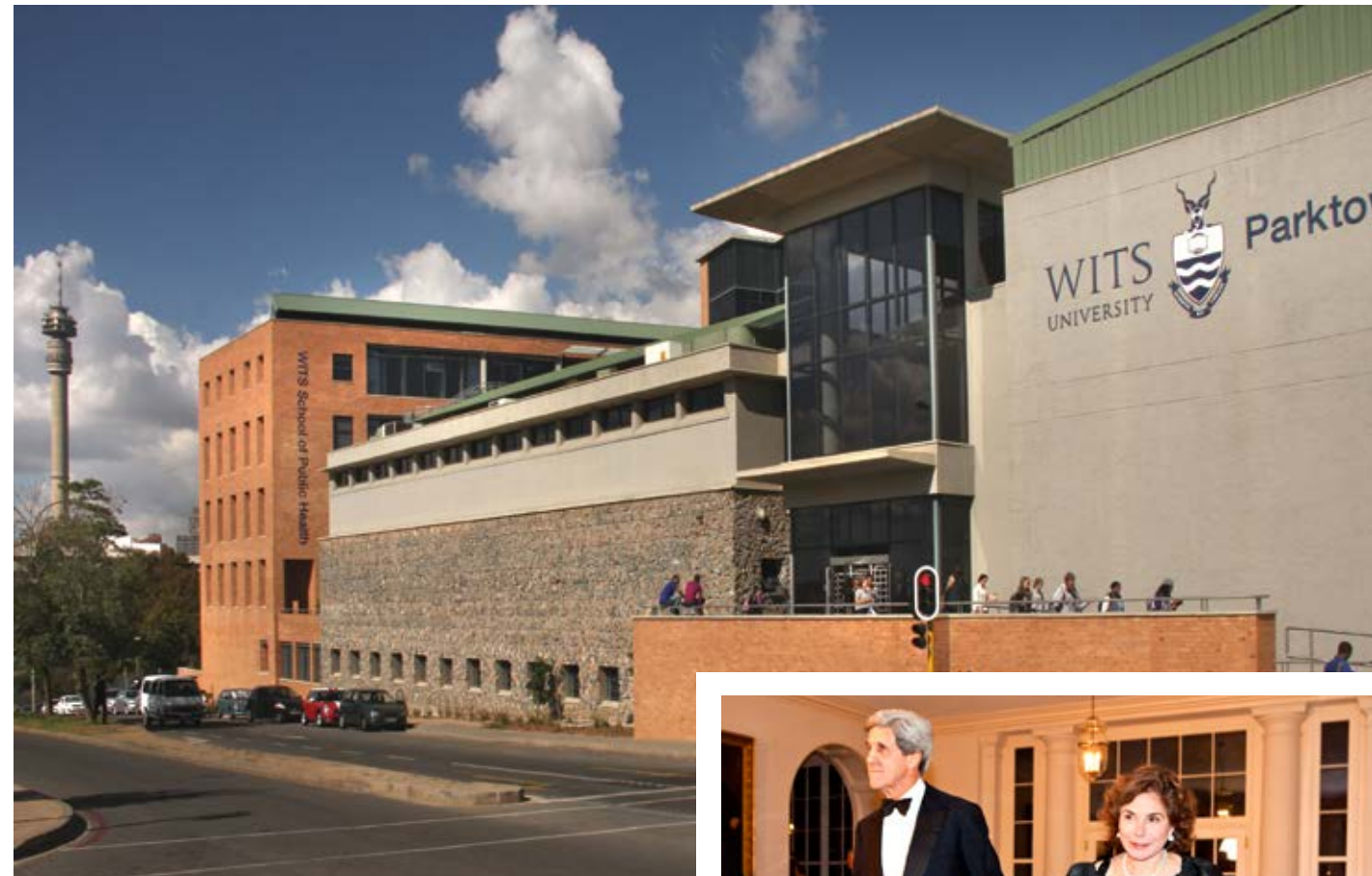
“Donors not only want to see that their money is well invested, they want to know that it will serve as a catalyst for growth, greater equality and justice,” says the Head of the School of Public Health, Professor Laetitia Rispel.

# PUBLIC HEALTH FOR SA, PUBLIC HEALTH FOR AFRICA

This multi-disciplinary School produces skilled public health practitioners who are trained to address the diverse public health needs and challenges in South Africa and Africa.

The undergraduate and postgraduate programmes include community medicine, epidemiology and biostatistics, health policy and advocacy, health economics, occupational health, rural health and social and behavioural change communication.

“Our research units are locally and internationally renowned, while our strategic partnerships extend from communities through to national departments and international collaborators,” says Prof Rispel.



## Alumna and philanthropist

Excerpt from a letter to Wits alumna, philanthropist and advocate for women's issues and human rights, Dr Teresa Heinz Kerry (BA 1960). She received an honorary doctorate from Wits in 2007. She also holds honorary doctorates from several American universities, including the University of Massachusetts and the Carnegie Mellon University.

Dear Ms Heinz Kerry,  
It gives me great pleasure to thank you and the Heinz Family Foundation for your donation of US\$100 000.00 towards the School of Public Health Building Project. We moved to our magnificent new building in December 2012 and the official opening took place on Thursday 24 January 2013. In celebration of this event, the Wits School of Public Health hosted an international public health symposium entitled: 'Building Capacity 4 Health'. This theme acknowledges the importance of public health in achieving good health for all. It also embraces the purpose of the School's new home: a place for teaching and promotion of learning, knowledge generation and dissemination, and public health leadership and advocacy. Professor Laetitia Rispel, Head of School

## Rand for a Dollar

The cutting-edge School of Public Health building cost approximately R146 million to build and opened in 2013. The many donors who made the building possible are named on honours boards in the School.

“Half of the money came from government through the Department of Higher Education and Training (DHET) and the former Head of School, Professor Fonn, put in an unbelievable effort to secure donors for the other half,” says Prof Rispel.

So many people and organisations donated, including a generous donation from the Atlantic Philanthropies Foundation and the Kresge Foundation.

“Kresge set the challenge that for every rand raised they would match it with a dollar. We achieved this, with the Faculty, the University and so many academic and non-academic staff members coming forward to donate through an incredible internal philanthropic campaign.

“And now that we have the building, it is used by so many different people and organisations – from teaching and research to public events, debates and workshops. The School is a lived space and it is everyone's space.”

[www.wits.ac.za/publichealth/](http://www.wits.ac.za/publichealth/)

## High quality public health data for Africa



To develop and improve biostatistical skills among researchers, the School of Public Health received R70 million (3.337 million pounds sterling) over five years from a fund created by the global Wellcome Trust and the United Kingdom's Department for International Development (DFID).

Biostatistics is responsible for the analysis and interpretation of scientific data generated in the biological and health sciences, in order to inform clinical or health policy and practice.

The funds are being utilised by the Sub-Saharan African Consortium for Advanced Biostatistical Training (S2ACABT), a Wits-led consortium of African and northern institutions. Associate Professor Tobias Chirwa, a biostatistician in the School of Public Health, and Head of the Division of Epidemiology and Biostatistics, is heading the consortium.

“In many African countries, there is a shortage of well-trained biostatisticians,” says Prof Chirwa. “The few people who are trained are often overwhelmed. In order to ensure that data is used to inform public health policy and practice for the benefit of the people in Africa, we need to prioritise training of African postgraduate biostatisticians who can provide the required analysis to a high standard.”

## Strengthening Employee Wellbeing

Anglo American invested R15 million in a new research chair – the Anglo American Endowed Chair in Occupational Hygiene – in the School of Public Health. The Chair will conduct research aimed at decreasing employee exposure to dust, noise and other health hazards in mining and other industries, thereby contributing to employee wellbeing.

For more than three decades Wits academics from the School of Public Health, in partnership with the National Institute for Occupational Health (NIOH), have been conducting ground breaking research on mining-related diseases. The new Chair will build on this track record and strengthen occupational hygiene by increasing the number of Master's and PhD students, and Postdoctoral fellows.



# PORTTRAITS OF EXCELLENCE

## TRANSFORMING CITIES Architecture, Urbanism and the Humanities

The Wits City Institute is generously funded by the Andrew W. Mellon Foundation's Architecture, Urbanism and Humanities (AUH) Initiative, which includes the Chair in Critical Architecture and Urbanism. Wits University was the only institution outside the United States, Canada and the United Kingdom to receive this funding, starting in 2013. One of Wits' largest Mellon grants (a total of US\$1.5 million over five years), it constitutes the core funding of the Institute.

One of Wits' largest Mellon grants (a total of US\$1.5 million over five years), the award constitutes the core funding of the Institute. It supports thought in response to large, humanistic questions that arise in the ever changing spaces of urban environments, with a particular focus on the ideas and intellectual traditions on the African continent. It focuses on the city as an idea, as it is being transformed during the current era of global urban expansion, and explores the many different forms of creative, collaborative and interdisciplinary knowledge production. As a member of the AUH Initiative, scholars at Wits engage with prominent thinkers in universities across the world.

### Mellon funds human capital

"Mellon funds human capital and the core intellectual contribution of our Master's, Doctoral and Postdoctoral researchers, who work with the Chair, is to bring humanities disciplines into a working relationship around debates on 'the city' and the role played by architecture and the spatial disciplines," says Professor Noëleen Murray, who joined Wits in March 2015 to take up the position as the first Wits Mellon Chair in Critical Architecture and Urbanism and Director of the City Institute.

"We are less interested in the modernist spatial ideal of cities, and more interested in how the city is experienced, represented and repositioned within intellectual discourse, as spaces that are built, fall into ruin, get invigorated, used and reused by different publics. In postcolonial contexts it evokes how you think about the city and its people, and how you address questions of division, dispossession and displacement alongside expansion, environmental quality and liveability. For us at the Institute these are not simply questions for spatial planning, but intensely human and political questions. We recognise that city-making and how cities change in their many different permutations is a deeply complex process.

### Connecting with the walker in the street

Prof Murray draws on the example of Joburg: "It is such an incredible city, constantly in a state of being made, unmade and remade. Yet across the terrain of the space we call Jozi, we believe our role is to begin to rethink many approaches. Drawing on alternative urban scholarship such as reading the work of Abdul Malik Simone, Mellon Fellows grapple with vexing questions – such as asking whether the old idea of the disconnected urban planner looking down from above is still in place, instead of connecting with the 'walker' in the street"

[www.wits.ac.za/cityinstitute/](http://www.wits.ac.za/cityinstitute/)

Wits' strategic goals over the next ten years include raising our international profile in research and in postgraduate training. The University is in the top 1% of world universities in nine of twenty-two fields, as listed by Essential Science Indicators. Our research has a high reputation internationally and more than 80% of our publications are in international journals attracting considerable numbers of citations.

Your support is helping so many outstanding postgraduate students to achieve at Wits. To further boost our postgraduate capability, we have initiated a new funding stream called *Honours to PhD in 5 years*. This funding is specifically aimed at growing the number of PhD graduates. Several donors are supporting this, including the Skye Foundation, Beit Trust and Levenstein Trust.

The Master's and PhD students featured here were amongst the winners of the 2016 cross-faculty annual symposium at Wits where they showcased their research through engaging oral presentations. The symposium is a high-level intellectual meeting place where postgraduates learn about other fields of research at the University, network and socialise with one another, explore synergies across disciplines and receive constructive input on their research.

DR SOTER AMEH  
PhD student,  
Faculty of Health Sciences



I grew up in Nigeria and completed my medical degree (MBBS) at the University of Benin, Nigeria. In 2007 I started at Wits and completed my Master's degree at Wits in Population-based Field Epidemiology in the School of Public Health. I am now a PhD student, pursuing research on evaluating an Integrated Chronic Disease Management (ICDM) Model in South Africa. My aim is to provide evidence-based data to show the effectiveness of such a model in improving the quality of chronic care and health outcomes of patients living with chronic diseases in South Africa.

My PhD is being funded through a range of scholarships, merit awards and research grants, including the Fogarty International Centre of the National Institutes of Health Fellowship, the Wits Health Consortium, the Wits University Postgraduate Merit Award and the Faculty of Health Sciences Research Endowment Fund.

I believe what is important for South Africa's higher education future is to boost the enabling environment for public-private partnerships in the funding of postgraduate and postdoctoral research in higher education.

## TAAHIRAH MANGERA

Master's graduate and lecturer,  
School of Mechanical, Industrial  
and Aeronautical Engineering



I grew up in Johannesburg South and completed my undergraduate degree in Mechanical Engineering at Wits. My experience with the academic staff at Wits during my undergrad and the high standard of research and development inspired me to pursue my Master's at Wits, funded by the Council for Scientific and Industrial Research. I am pursuing research into the material and tailoring of a paediatric prosthetic knee.

I have just been appointed as an Associate Lecturer in the School of Mechanical, Industrial and Aeronautical Engineering and I will be doing my PhD.

I have always had an interest in prosthetics and the way in which they can be improved and made more cost effective, to make them accessible to patients in the third world. I think it is important for South Africa to encourage students to pursue careers in fields that will put South Africa and Africa amongst the world leaders in R&D and innovation.

## OFENTSE MAKGAE

Master's student, Wits School  
of Chemistry, PhD student,  
Oxford University



I was born in a small village near Rustenburg in the North West province. I graduated with a BTech Chemistry (cum laude) from Tshwane University of Technology (TUT).

My exposure to materials science research during my time at the Energy Materials Group of the CSIR guided me towards my Master's research at Wits, within the Catalysis and Materials Research Group where I completed my MSc in Materials Science. My research is based on the crystal growth and design of inorganic minerals and their application in lithography of functional materials with potential application in catalysis and energy devices. This work, which won the 2015 SACI Young Chemist, was fully funded by the DST-NRF Centre of Excellence in Strong Materials, and the Council for Geoscience.

My career will definitely be in academia and in 2016 I was awarded a Rhodes scholarship (SA-at-Large & Linacre 2016). I am currently pursuing my DPhil in Materials at Oxford University in the UK. Ultimately, I would like to return to South Africa and contribute to the amazing output of South African research institutions.

## MARIKE VENTER

PhD student,  
School of Economic  
and Business Sciences



I grew up in Port Elizabeth where I studied at Nelson Mandela Metropolitan University. As a postgraduate, I moved to Wits to take up a lecturing post in education and to do my PhD in neuromarketing. This is a field of marketing research that studies consumers' cognitive and emotional response to marketing stimuli. It fascinates me and I believe that my research can provide insight into improving the financial performance of companies in the current competitive marketplace.

I am fortunate to be on a staff bursary and to have received a number of university scholarships to assist in covering my research costs.

Career-wise, I have chosen academia, and I am committed to playing my part in advancing higher education. I do not believe that attending university should be free of charge. Universities have considerable costs; they need to continuously invest in educational resources to maintain and improve on the quality of education offered, and this should not be compromised. I think that higher education should be based on a three-tiered system of universities, technical colleges and teaching colleges.

To advance my knowledge in my field, I would like to spend time at universities in the Netherlands or Germany because they are at the forefront of the research areas that interest me.

## EDWIN MHANDU

PhD student, School of Literature,  
Language & Media



I grew up in Harare, Zimbabwe and did my secondary education at Seke One High School in Chitungwiza (a day school with hot seating, i.e. one stream of learners studies from 8 am to 12 noon, and another from noon to 4pm). I then proceeded to the University of Zimbabwe where I completed a Bachelor's degree in English and History, followed by my Honours and Master's degrees.

Wits was my university of choice for my doctoral degree because of its well-deserved reputation for quality education and excellence. This became a reality when the current Deputy Vice-Chancellor: Advancement, HR and Transformation, Professor Tawana Kupe, visited the University of Zimbabwe as part of a delegation in university collaborations. I was a newly appointed temporary lecturer in the English Department at the time and he encouraged me to pursue a PhD at Wits, which I did.

From 2014, I have been on Postgraduate Merit Award offered by Wits, which has radically transformed my life for the better. I am doing my PhD through the School of Literature, Language and Media, researching 'enjoyment and wellbeing' in the production of cultural spaces in Zimbabwean literature. I want to pursue a career in academia and participate actively in knowledge production to help build an African-centred scholarship with a global outlook.



# PEOPLE GIVE TO PEOPLE

“People give to people whose vision they believe in. This is what created WAM and continues to support the growth of the museum,” says Julia Charlton, Senior Curator of Wits Art Museum (WAM). WAM opened in 2012, following ten years of development, planning and fundraising.

“People have supported WAM in so many different ways: they gave us funds to build WAM; they have given us operational funds and artworks; they have opened doors to new donors; they have given generously of their time as exhibition guides, helping us to stage major functions and helping us to run our community art programmes.”

A tribute to multi-donor funding: this is WAM, with its programmes and priceless collections of southern African and African artworks.

## Donors large and small

WAM was knitted together from parts of three buildings to create a 5000 sq. metre museum. Wits allocated the space and put up 25% of the money. The rest came from 54 deeply valued donors, in amounts ranging from R100 to R10 million.

“The names of all the donors who contributed to building the new WAM are on a tribute board in our foyer,” says Charlton. “We are immensely grateful to each and every one.

“After WAM opened we created an endowment to fund the growth of our collection, programmes and staff,” says Charlton. The proceeds from two high-profile auctions where artists, collectors and buyers contributed so generously, plus other events and donations, have created a capital sum of over R24 million.

“Our current three-year educational programmes are being funded by Bidvest and the Kingdom of the Netherlands. Through this programme we are able to bring in groups of learners from under-resourced schools to experience WAM and participate in our art classes.

“Since 2015 Business and Arts South Africa (BASA) has assisted us with grants to support business-arts partnerships and the marketing of exhibitions.

“So much has been achieved in the first years of WAM’s existence and we have exciting plans for the future that will continue to grow WAM’s impact on our diverse constituencies,” concludes Charlton.

## Wits Gold Medallist and Philanthropist

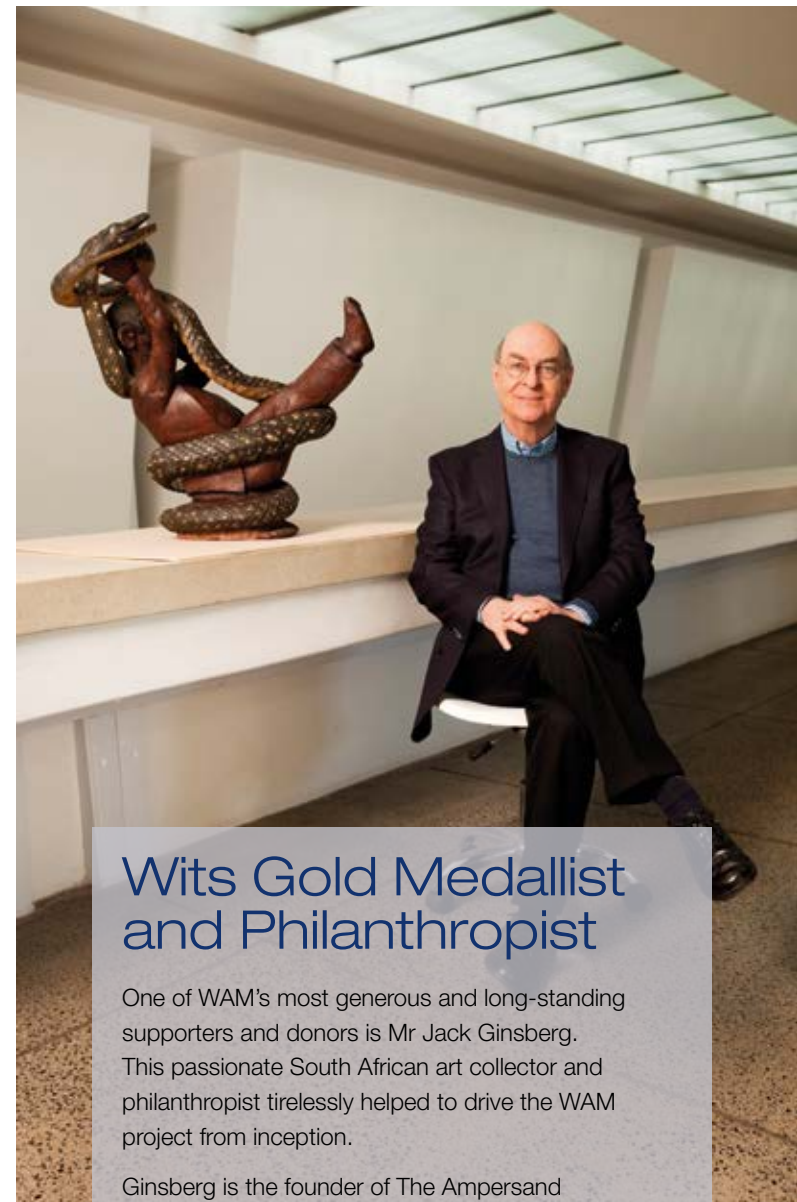
One of WAM’s most generous and long-standing supporters and donors is Mr Jack Ginsberg. This passionate South African art collector and philanthropist tirelessly helped to drive the WAM project from inception.

Ginsberg is the founder of The Ampersand Foundation (TAF) and the Ampersand Foundation Endowment (TAFE) at WAM, which will provide long-term support for WAM’s research, growth, acquisitions and programmes.

The Ampersand Foundation also funds a two-month residency in New York for professional South African artists and arts administrators where they experience the city’s visual and performing arts offerings, and enhance their contacts and exposure.

WAM has also received a great many artworks from Ginsberg; his most recent donation is 500 works by Walter Battiss. This is part of Ginsberg’s inimitable art collection, numbering over 2 000 mostly South African artworks, which has been bequeathed to WAM.

For his contribution to the arts in South Africa at large and for his specific contribution to Wits and WAM, he was awarded a Wits Gold Medal in 2014.





# HOPE AND MEANINGFUL CHANGE

Together with our many public and private donors and sponsors, Wits ensures that academically deserving students in financial need are given a place at the University.

Wits administers approximately R900 million in financial aid and scholarships annually on behalf of the National Students' Financial Aid Scheme, corporates, private donors and other institutions. Over half of Wits' students receive bursaries or financial aid in one form or another.

One of many prestigious scholarships is the Vice-Chancellor's Equality Scholarships. These scholarships are awarded to the top 10 matriculants from no-fee schools who apply to Wits University. The Scholarships cover all tuition and residence fees, textbooks, food and a cost of living allowance for the duration of their undergraduate degree.

"The Scholarships create hope in society, and in so doing, create meaningful transformation and change in South Africa," says Professor Adam Habib.

They supplement the Vice-Chancellor's Scholarships, awarded to the 10 best learners from all schools, and enhance Wits' current suite of equity programmes which include the Targeting Talent Programme, the Bale Scholarship Programme for young women, the Go to University to Succeed (GUTS) outreach campaign and the Leadership, Education and Development Programme (LEAD).

Three of the four undergraduate students featured here are on Vice-Chancellor's Equality Scholarships. One of the students is on the Boris Wilson Endowed Scholarship.



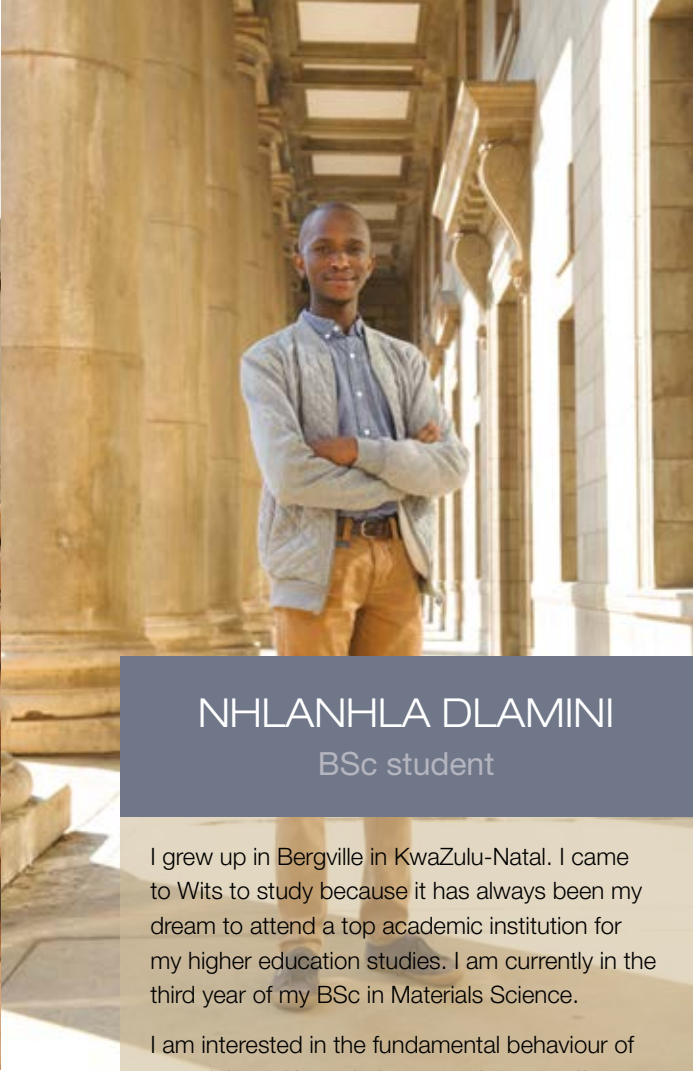
KEZIAH GABRIEL  
Medical student

I grew up in Amanzimtoti on the KwaZulu-Natal South Coast.

I am a final year medical student, funded by the Boris Wilson Endowed Scholarship since my second year. I could never have studied medicine without this, which is something that many South African students face.

One of the reasons I chose to study medicine was because my father had a fatal traumatic accident when I was 15, and the feeling of helplessness when someone you love is dying has stuck with me. I wanted to empower myself with medical knowledge and skills to ensure I never feel lost in the face of medical trauma and pathology ever again.

My goal is to be a successful and knowledgeable general practitioner. The importance of general practice is currently underestimated but good general practitioners are essential to any health system that aims to function effectively. Our public health care system requires vast improvements in primary health care and I would love to be involved in improving it. I believe the pioneers of change in South Africa will be the new generation of well-educated, passionate graduates.



NHLANHLA DLAMINI  
BSc student

I grew up in Bergville in KwaZulu-Natal. I came to Wits to study because it has always been my dream to attend a top academic institution for my higher education studies. I am currently in the third year of my BSc in Materials Science.

I am interested in the fundamental behaviour of materials and how their processing can affect their performance. I would like to see South Africa producing materials locally instead of importing them. South Africa's future is highly dependent on people with skills and problem-solving abilities in a wide variety of sectors.

Wits should continue encouraging the pursuit of postgraduate degrees to feed this pipeline, as well as the South African academic pipeline. This expands the cycle of knowledge creation and distribution in the country, and maintains Wits' highly standard of education and research.

I grew up in Acornhoek, a town in Bushbuckridge, Mpumalanga, and I am a third year Bachelor of Accounting Science student.

The current generation of youth in South Africa has arguably the greatest opportunities of any generation to date; however, they are also confronted by many challenges. In order to move forward, the current leadership in our country has to take the issue of youth unemployment seriously. For South Africa to become more inclusive, many more people need to be provided with the opportunity to work and make a productive contribution to the economy and society.

To achieve this they need to study and in my opinion, people who cannot afford undergraduate education should be allowed to study for free. However, before any decision can be made about free higher education, we all need to understand the fundamental consequences of free and non-free higher education. In particular, we need to first establish whether free higher education would result in greater equality.



KWANELE SISHI  
Medical student

I grew up in Swayimane, a rural area close to Pietermaritzburg in KwaZulu-Natal. I am currently doing my third year of medicine. The human body fascinates me, I am continually amazed at how perfectly God created us and I believe that I am an extension of His healing hand on Earth.

Once I am qualified, I would like to work as clinician for a few years and then specialise in psychiatry or neurology. I also hope to be involved in academics and academic research in later years.

Looking at the future of South Africa, I think what is crucial is producing more leaders and highly-skilled professionals and ensuring that they are employed within the country because we are currently losing a lot of our skilled workers to other countries. For me, South Africa is the country of choice to pursue my career as I feel that I need to use my skills to serve my country in gratitude for its contribution to my growth as well as my academic development.



RELEBOGILE MASHILE  
BAccSci student



# MODES OF GIVING

## INDIVIDUAL GIVING

The comprehensive list of individual donors and sponsors since January 2015 can be viewed on page 45 or on the webpage Honours Board of Donors & Sponsors: [www.wits.ac.za/givingtowits](http://www.wits.ac.za/givingtowits)

Donations of any amount make an enormous difference to Wits – to our teaching and research excellence, scholarships, campus improvements, the student experience, and all-round academic excellence. This section includes a snapshot of our many individual donors and supporters, examples of the different fund-raising facilities at the University and the establishment of the Wits Chancellor’s Circle in recognition of our many generous supporters.

### EVERY DONATION COUNTS

The Wits Annual Fund is a discretionary endowment fund, which continues to grow over time, with the interest earned used by Wits where it is most needed. This fund is the primary means by which alumni, staff and friends can give tax-deductible donations to the University. Every donation counts. To illustrate this: if 10 000 alumni each donated R100 per month, this would equate to R12 million per year for the fund. Donations can be made annually, monthly, once-off or periodically.

For more information: [www.wits.ac.za/annualfund](http://www.wits.ac.za/annualfund)

## 2015 WITS SRC 1MILLION1MONTH CAMPAIGN

The 2015 Wits SRC launched the 1Million1Month Campaign in collaboration with the public and private sector, to bolster its Humanitarian Aid Fund and provide emergency financial aid for indigent students, including their fees, accommodation and meals.

The SRC encouraged donors to give whatever they could, from R100 upwards. Donations came in from far and wide, including the law firm Norton’s Incorporated, individual members of the bar, the Oppenheimer Family Trust, Wits Deans and senior executive staff, and the academic staff union Asawu.

The campaign changed the lives of 219 academically deserving students in financial need who were turned down by the National Student Financial Aid Scheme (NSFAS).

Almost 60% of the 219 students are young women. The biggest share of funds went to the upfront payment of fees (29%) and accommodation costs (21%). The majority of beneficiaries were students in the Faculties of Humanities (35%) and Engineering & the Built Environment (24%), followed by the Faculty of Commerce, Law & Management (21%).

Major individual donors to this fund include Professor Adam Habib, Wits Chancellor Justice Dikgang Moseneke and Advocate George Bizos.

Wonderful support came from 702 in collaboration with Old Mutual and the Two Oceans Marathon who ran the ‘More Than Yourself’ campaign to raise finances for this fund. And the citizens of South Africa have also opened their hearts and pockets in support of this campaign.



## WITS CHANCELLOR’S CIRCLE

All donors who have made significant donations to Wits are invited to join the Wits Chancellor’s Circle. This is Chancellor Justice Dikgang Moseneke’s way of recognising benefactors like you.

“As the patron of the Chancellor’s Circle, and on behalf of the University, I want members to feel appreciated and part of a special Wits experience,” says the Chancellor. “As part of this relationship I want you to feel free to give feedback on the direction and performance of the University.

“In my time as Chancellor of Wits University I have been struck by the generosity of alumni. Through initiatives such as the Wits Annual Fund and the range of fundraising drives for important infrastructure projects, I have been introduced to individuals, like you, who have supported Wits with significant donations. These demonstrations of support are extremely moving, and my way of formally acknowledging you is to warmly invite you into the Chancellor’s Circle.”

As a token of our gratitude for the considerable role you play in the University’s success, all members of the Chancellor’s Circle are invited to exclusive Wits functions and your input on the University’s development will be sought.

Yours sincerely,

Justice Dikgang Moseneke



## 1MILLION1MONTH CAMPAIGN CATALYST

The 1Million1Month Campaign at Wits, launched in February 2015, raised over R2,3 million by May 2015. Donor Ms Basetsana Thokoane was the tipping point in the achievement of the first million with her donation of over R500 000.

Born in Soweto, she was no stranger to socio-economic hardships during the pre-democracy era. “I was a poor, black, teenage girl in the streets of South Africa. I was a dropout with no matric; the country was at the height of instability and it was all doom and gloom in the townships,” explains Ms Thokoane, who went into exile with the ANC in Tanzania.

“I was educated through ANC scholarships and support, and I am a proud graduate of the ANC’s Solomon Mahlangu Freedom College in Tanzania, and universities and colleges in the UK.”

Ms Thokoane brought her skills back to South Africa and held senior posts in the post-1994 government for many years before going into business.

Ms Thokoane said her donation was both a tribute to her benefactors in exile, and an acknowledgment of her roots: “The benevolence of others taught me that one cannot be an island in a sea of poverty. I will always make sure that young people who work hard are supported to achieve their dreams, as so many did with me.”



## 2016 WITS SRC SUPPORTS THE MISSING MIDDLE

Approximately 10% of Wits students are National Student Financial Aid Scheme (NSFAS) beneficiaries. However, a significant number of our students do not qualify for NSFAS because they are part of what is known as the 'missing middle'. These students are from families whose incomes are above the NSFAS threshold but they are unable to afford university fees. Their household income ranges from about R120 000 per annum to approximately R400 000 per annum.

Responding to this, the SRC of 2015/2016 launched the Wits SRC Humanitarian fund, known as the #Access campaign.

"The 'missing middle' are students referred to as being 'too poor to be rich and too rich to be poor'," said SRC President Ms Nompandolo Mkhathshwa, in her address to hundreds of parents and students attending the 2016 Wits Welcome Day for new students. The SRC said that it hoped to assist approximately 8000 students to pay for their tuition, accommodation and/or transport fees.

The campaign launched with a major donation of R2 million from Nedbank. Anton de Wet: Managing Executive, Client Engagement at Nedbank, says the donation is in line with the bank's commitment to tertiary education in South Africa.



"We have been working with Wits to find a sustainable funding solution for higher education in South Africa.

We are committed to continue this work with Wits and other stakeholders. We wish the SRC every success in their efforts with the #Access campaign and are delighted to donate the first R2 million towards reaching this goal."

Major individual donors to this fund include Professor Adam Habib, Wits Chancellor Justice Dikgang Moseneke and Advocate George Bizos.

By the end of February 2016, R3,2 million had been raised.



## APPRECIATIVE OF EXCELLENCE

"I have always been very appreciative of the excellent and rigorous medical education and training I received at Wits – certainly as good as that of graduates I have encountered from Ivy League medical schools in the USA," says Dr Evan Stein, who graduated with his MBBCh from Wits Medical School in 1970 and a PhD in inherited high cholesterol from Wits in 1981.

"My wife, Lindsay Stein, PhD (née Smith), is also a Wits graduate (BA Honours, Speech & Hearing Therapy, 1972)."

In 2013 Dr Stein drew up a proposal for a programme to detect and treat Familial Hypercholesterolemia (FH) patients with his friend and colleague, Professor Frederick Raal (MBBCh 1981, MMed1991, PhD 2000), who currently heads the lipid clinic that Dr Stein started in 1972.

"FH is the commonest inherited disease in the world associated with significant disease and death," Dr Stein explains.

In December 2015, the Wits Council approved the establishment of the 'Evan Stein FH Centre', made possible by a US\$460 000 donation from Dr Stein and a US\$750 000 endowment from the University of Pennsylvania, enabled by Dr Stein.

"The Centre is a way for me to help contribute to addressing FH needs in South Africa, where funds for this type of research are almost non-existent," says Dr Stein. "Together with Wits, we came up with a model that will ensure that the funds are used optimally; keeping the donors involved and likely to contribute more."



## IT'S IN YOUR HANDS NOW

Wits alumni Mr Patrice Motsepe and Dr Precious Moloi Motsepe established the Joburg-based Motsepe Foundation in 1999. This philanthropic organisation supports educational, social, healthcare, women and youth empowerment and faith-based projects in South Africa and Africa.

Mr Motsepe, business and mining entrepreneur, has an LLB from Wits (1988). Dr Moloi Motsepe, business entrepreneur, medical doctor and women's empowerment champion, has an MBBCh (1987).

In January 2013 they became the first African signatories to the Giving Pledge, a commitment by the world's wealthiest to pledge a substantial part of their wealth to philanthropy in their lifetime.

They are strong advocates that "knowledge is power" and their generous support to Wits students over the years is motivated by the call to collective action by Nelson Mandela, who, on the eve of his retirement from active politics, said: "It's in your hands now".

"As our beloved Madiba said: 'Education is the key that opens doors'. Never stop learning!" says Dr Moloi Motsepe.

As part of their giving to Wits, the Motsepe Foundation has funded many bursaries for Wits students to assist them in furthering their education in the fields of Science, Technology, Engineering and Medicine. Of these students, about 55% are women.

Dr Moloi Motsepe is a powerful role model for young women. Her dream is "to see women in Africa freed of the invisible chains that are holding them back. I dream of a continent where women have achieved full economic emancipation and reach their full potential."

## CLASS GIVING AND THE MBBCH CLASS OF '66

Reunions offer a special opportunity for members of a graduated class to share memories, renew friendships and join forces in offering an enduring group gift to Wits. The Wits Medical School Class of 1966 was such a reunion; they came together for their 50th reunion at Wits Medical School.

Dr Mary Hodkinson (MBBCh 1966, MSc Med 1990, PhD 1999) and Professor Michael Eliastam (MBBCh 1966) convened the itinerary for the three-day reunion. It included two nights at a game reserve, a talk on campus by Dr Martin Smith (MBBCh 1982) on health politics in South Africa, and a tour of Drimolen – the world-famous Cradle of Humankind fossil site – led by Dr Colin Menter (PhD 2003), son of Dr Alan Menter (MBBCh 1966).

The reunion dinner was held in the Adler Museum of Medicine. A memorial for deceased alumni preceded cocktails. Many of the alumni travelled great distances to attend. The advantage of those operating in dollars, euros or pounds is that the exchange rate considerably favours Wits, and donations from abroad go a long way. A gift of over R600 000 from 36 members of the Class of '66 was handed over to the Faculty of Health Sciences in January 2016 for the PV Tobias Bursary Fund.





Full bursaries provided by Mr Srinivasan Venkatakrishnan (warmly known as Venkat) and Professor Hamsa Venkatakrishnan are enabling the Chartered Accountancy studies of several Wits students.

Venkat is the Chief Executive of AngloGold Ashanti and he funds the students in his personal capacity. Prof Venkatakrishnan holds the SA Numeracy Chair at Wits.

"My wife, Hamsa, and I made a commitment to fully fund the education of five South African students each year, in the fields of finance, accounting or economics, at Wits," explains Venkat. "This decision is based on our belief in the importance of access to high quality education. We hope this modest contribution will build skills that will benefit South Africa, and make a positive change to the lives of the students."

To ensure that the students feel supported in the academic environment, each of them is mentored

by one of Venkat's colleagues in senior management. This is particularly important for first year students, who often feel overwhelmed in the first few months of university. Venkat keeps in regular contact with the students and a schedule of their progress is pinned above his desk.

His philanthropic spirit is appreciated by the students, as expressed by Chartered Accountancy bursary student, Ms Reabetswe Moletle: "Seeing Mr Venkat give so much heart, soul and passion to educating strangers like us has inspired me to also give back in future and make means available for many others who want to pursue their careers and dreams."

## THE VENKAT WAY

## OVERCOMING OBSTACLES TO LIVE YOUR DREAM

Dr Harry Allan Broekman personifies the determination of the human spirit. It was his dream as a young boy to become a doctor, but he soon found out that it was not easy. In pursuit of his dream, he three times repeated his matric in order to achieve a first class matric to get into Wits.

His next hurdle was money, which his parents simply did not have, and he worked for several years as a bank teller in order to save for his studies. He finally got into Wits, and graduated with his medical degree in 1969. He was registered as a medical practitioner the following year and worked at Coronation Hospital and South Rand Hospital.

Dr Broekman passed away on 4 July 2013 and left R7 million to the Wits Medical School so that young people with a burning desire to enter the medical world, who do not have the means to do so, can be helped to fulfil their dream. For he understood and appreciated the obstacles that many people have to overcome.

## A GIFT TO ADDRESS INEQUALITY

- Aubrey and Helena Sheiham



On 18 November 2015, Wits announced that Wits alumnus Professor Aubrey Sheiham (BDS 1957) and his wife Dr Helena Sheiham had donated R8,8 million to Wits University to support the Vice-Chancellor's focus on addressing inequality.

Donations to UK-registered charities by UK tax-paying individuals are tax free. This benefit can increase a donation by 25%. Hence, Wits' UK charity claimed a tax refund on the Sheiham Family Gift and received an additional R3 million. This brings their donation to Wits to over R11 million.

Sadly, six days after making the donation, Prof Sheiham passed away on 24 November, at the age of 79.

Prof Sheiham was Emeritus Professor of Dental Public Health at University College London (UCL). Dr Helena Sheiham is Co-Director, Centre for Philosophy of Natural and Social Science, London School of Economics.

The Sheiham donation is currently being used to support a programme in the Wits School of Public Health that is researching the social determinants of health and health inequalities. In South Africa, huge health inequalities remain, and race and gender continue to be the key markers of vulnerability, with a disproportionate burden of ill-health among black African and rural communities. The Sheiham Family Wits Programme on Social Determinants of Health and Health Inequality will seek to reduce this.

Professor Laetitia Rispel, Head of the Wits School of Public Health, said the donation is being used "to enhance the skills and capacity of Wits staff to teach, research and develop policies on social determinants of health and health inequality, and to support doctoral students in social epidemiology, advanced epidemiology and biostatistics."

The donation will also foster Wits' links with other southern African universities and UCL. "Ultimately," said Prof Rispel, "the donation is enabling us to contribute to efforts in South Africa to eliminate health inequalities."



In her tribute to Aubrey at his funeral on 21 December, Helena said:

"He was not motivated by desire for fame or status; nor by relish in fights and victories. No; his stance stemmed from a deep commitment to science, evidence and truth – and from a clear understanding of how they should be united with values to make a real difference in the world. And the benefit of his gentle strength was not only to abstract ideas but also very concretely to people. He believed whole-heartedly in their potential and showed boundless determination in helping them to achieve it. I was astonished and moved by how often people said 'he changed my life' and even 'saved my life'."





# OUR NATION-BUILDING MOMENT

- Alumni rally behind South African universities

The Wits former SRC Presidents, Presidents of the Black Students Society (BSS) and the 2016 Wits SRC teamed up in 2016 for the launch of a fund they have created called the South African Student Solidarity Foundation for Education (SASSFE).

SASSFE's aim is to improve wider student access to higher education, to address the plight of poor students and thereby assist in the equitable transformation of South African society.

"Our principal objective is to establish a long-term, sustainable fund by mobilising higher education graduates in South Africa to contribute a minimum of R200 a month towards assisting students at a tertiary education institution of their choice," says SASSFE Chair and spokesperson Mr Tiego Moseneke.

"Starting with the launch of the Wits SASSFE Chapter, we intend to reach a significant number of Wits alumni

who will make monthly contributions within the first year. We also encourage all South Africans of goodwill to support this initiative. Through this act of solidarity with the present generation of students, we can contribute to a better tomorrow for our country. This is our nation-building moment."

Former Wits student leaders on the SASSFE management committee include alumni Tiego Moseneke, Linda Vilakazi, Moss Mashishi, Terry Tselane, Firoz Cachalia, Kenneth Creamer, Themba Maseko and Tebogo Thothela.

SASSFE's trustees include eminent Wits alumni: Archbishop Thabo Makgoba, the Archbishop of Cape Town (Chairman), Retired Judge of the Constitutional Court Richard Goldstone, Judge of the Supreme Court of Appeal Azhar Cachalia, and Wits Convocation President Professor Mamokgethi Phakeng.

# ANONYMOUS R100 MILLION DONATION

A long-term friend of Wits who chooses to remain anonymous made an exceptionally generous donation of R100 million in 2014, R10 million of which was specifically allocated to the Wits Art Museum (WAM).

After much deliberation as how best to allocate the remaining R90 million, in September 2015 Professor Zeblon Vilakazi, the Deputy Vice-Chancellor of Research and Postgraduate Affairs announced the decision:

- R45 million to the Digital Innovation Project and the Inner City Research/Applied Complexity Research (ACR) Projects; and
- R45million to the University's strategic transformation programme.

The Digital Innovation Project is a research-led ecosystem that promotes digital innovation and entrepreneurship. In partnership with Wits Enterprise, the Wits Digital Launch Pad (an incubation capability) will be established to develop promising ideas from students, academics and researchers, from concept to viable start-up. The Digital Launch Pad will be located in the Tshimologong Precinct in Braamfontein.

The ACR Projects, run through the Wits School of Governance, engage a trans-disciplinary approach to understand inequality and exclusion in Joburg, as these dynamics account for much of the variance in systemic social and unemployment problems faced by the City. Several Wits partners are involved, including the Wits Transnet Centre for Systems Engineering and the Gauteng City-Region Observatory.



# Committed Joburger

In March 2016 Mr Chris Westergaard, a Joburg resident, contacted the Director of Development and Fundraising, Mr Peter Bezuidenhout. He and his wife, Audrey, handed him an envelope with a note pledging their R1 million donation to Wits.

Mr Westergaard explained that he is originally from Denmark, that he himself has no tertiary education but that his three daughters had studied at Wits. He said that he was making this donation because of the importance and impact of tertiary education in South Africa.

"A matric today means very little, as one may observe in our daily lives. Further education is imperative and Professor Habib gives us confidence that Wits University is in capable hands. It is our hope that our donation may help to advance Wits students and the reputation of Wits internationally" says Mr Westergaard.

Considering that his interests are archaeology and the natural environment, Wits thought it fitting to use this donation to fund the new undergraduate laboratory for the School of Geography, Archaeology and Environmental Studies (GAES).

Mr and Mrs Westergaard were invited to experience Wits' Rock Art Research Institute (RARI), Origins Centre, Archaeology Division and Fossil Vault.



# CORPORATEDONORS&SPONSORS

The comprehensive list of corporate, and corporate foundation, donors and sponsors since January 2015 can be viewed on page 50/51 or on the webpage Honours Board of Donors & Sponsors: [www.wits.ac.za/givingtowits](http://www.wits.ac.za/givingtowits)

Over the year Wits has grown its relationships and partnerships with our corporate donors and sponsors, who boost the capacity of existing programmes, departments and institutes, who sponsor bursaries and buildings, and who, together with Wits, create new Chairs and programmes that advance the University's 21st century needs.



## DRIVING DIGITAL BUSINESS IN A DIGITISED WORLD

The Telkom Chair in Digital Business at the Wits Business School is Africa's first chair in this space. The signing ceremony took place on 18 May 2016.

In addition to its initial R32,7 million funding over five years, Telkom is creating a black internship programme for Wits Business School students. Telkom will also offer free digital business training to its own staff.

Through this Chair, Wits Business School plans to conduct research in the field of digital business in Africa, and advance awareness of digital business and digital readiness by engaging with business, government and communities.

"This Chair will ensure that as a business school located in the economic heart of Africa, we are at the forefront of delivering important research and relevant programmes that are essential for doing business in today's digitised world," says Professor Steve Bluen, Head of the Wits Business School.

"The impact of this Chair is significant. Not only will it contribute to the economy by developing essential skills that will boost employment and encourage start-ups,

but it responds directly to the Science, Technology and Innovation Strategy adopted by the African Union in 2014 which aims to reposition the continent as a collection of technology-driven economies, ensuring the sustainable growth of the countries within."

Mr Sipho Maseko, Group Chief Executive at Telkom, explains that the availability of studies in digital business was an essential development for Africa and South Africa: "Most businesses are, to an ever-increasing extent, online businesses. Digitalisation is helping companies achieve their business goals in a new real-time, information-rich marketplace. This is the world our young people are entering."

Mr Maseko says the collaboration with the Wits Business School would also help to identify and develop black South African and African talent in the field of digital business.

"The next generation of business people will be even more exposed to new technologies, along with the threats and opportunities of digital disruption. Unless digital business is part of the business model, companies won't survive."

## DISCOVERING WHAT LIES BENEATH THE EARTH

In April 2015 Wits announced that Shell SA had committed to investing R5 million over a five-year period to help create a Seismology Reflection Centre at the University.

The Centre aims to develop innovative technologies to discover what lies beneath the earth, and at the same time to address the significant skills shortage in the geophysics and petroleum engineering fields, and other key sectors that drive development on the continent.

Housed in the School of Geosciences, the facilities at the Centre will be used to provide world-class geophysical training to students across Africa in order to develop and advance the knowledge and skills demanded by the oil, gas and mineral industries.

The School of Geosciences is the leading applied geoscience training and research entity in Africa, and the only one in South Africa with the capacity to deliver geophysics training.

The Director of the Centre for Reflection Seismology is Wits graduate Dr Musa Manzi (BSc 2008, BSc Hons 2009, PhD 2013). His PhD studies, in which he applied petroleum geophysics software to a Witwatersrand goldfield, have generated more than ten papers in international journals, and have earned him a premier international research award from the Society of Exploration Geophysicists.

Dr Manzi is currently supervising eight postgraduate students who are conducting research on the processing and interpretation of the 2D and 3D seismic data. This research is aimed at high-resolution mapping of some of the world's deepest gold and platinum-bearing horizons from South African mines, which is significant for the country's economy. The research also seeks to develop new techniques that would allow the detection of methane conduits (faults and dykes) in deep underground mines, which will mitigate risks and hazards associated with methane explosions.

The Centre's research will significantly contribute to the NRF/DST Centre of Excellence in Integrated Mineral and Energy Resource Analysis (CIMERA), co-hosted by Wits and the University of Johannesburg (UJ).

## TSHIKULULU

Tshikululu Social Investments is one of South Africa's leading corporate social investment (CSI) managers. Wits has a strong relationship with several leading corporations, groups and organisations who donate and sponsor projects at the University through Tshikululu.

### Anglo American & Anglo American Chairman's Fund

**Projects supported include:**

- Anglo American Chair in Occupational Hygiene
- The Centre for Deaf Studies, Early Childhood Learning
- Wits Developmental Pathways
- The Wits Rock Art Museum and Chamber of Mines building
- Scholarships and bursaries

### FirstRand & FirstRand Foundation

**Projects supported include:**

- The Centre for Deaf Studies
- The School of Computer Science and Applied Mathematics
- Wits School of Education
- Scholarships and bursaries

### Discovery & Discovery Foundation

**Projects supported include:**

- The PV Tobias Fund, School of Oral Health Science, School of Statistics and Actuarial Sciences, Department of Family Medicine

### De Beers & De Beers Fund

**Projects supported include:**

- Wits 21st-Century Institutes, School of Mining, Research etc
- Health Sciences, School of Geography, Archaeology and Environmental Sciences, Rock Art Institute, School of Anatomical Sciences
- Scholarships and bursaries

### ApexHi Charitable Trust

**Projects supported include:**

- The Centre for Deaf Studies
- The Maths Connect project

### Fluor Development Trust

- Scholarships and bursaries



## TARGETING & DEVELOPING TALENT

The Targeting Talent Programme (TTP) is a pre-university readiness and talent development initiative for Grade 10 – 12 learners, with an emphasis on learners from under-resourced schools. It addresses the critical shortages in the output of matriculants who are academically and psychologically equipped to enter Science, Technology, Engineering and Mathematics (STEM) programmes at university.

The TTP is one of several programmes run by the Student Equity and Talent Management Unit (SETMU) at Wits for pre-university and university students, to aid their success and transformation into critically-minded graduates, who are able to reach positions of influence and make a significant impact on wider society.

Wits is the university of choice for a large number of school leavers and our current registrations include more than 66% black students, a considerable percentage from disadvantaged backgrounds.

Over the past 10 years SETMU has been generously supported by a number of donors, including the BP South Africa Education Foundation Scholarship Programme, Goldman Sachs, the Telkom Foundation, South African National Roads Agency Ltd (SANRAL), the Department of Science and Technology (DST), the Limpopo Department of Education (LDE) and the Industrial Development Corporation (IDC).



## CUTTING EDGE UNDERGRAD LABORATORY

The AECL-funded chemistry laboratory, which opened in 2012 as one of the key laboratories within the new Science Stadium precinct at Wits, has had a profound impact on chemistry education. Prior to its construction, first year chemistry was taught in spaces that could not suitably accommodate the large numbers of students taking the subject.

This spacious, well-equipped laboratory provides the space for over 400 students to use the facility at the same time. Each student has a workspace with access to all the apparatus they need to conduct class experiments, including gas, water and electricity. The design of the laboratory facilitates lecturing and group work, with stations clustered in fours to allow students to work together easily.

All degree programmes within the Faculties of Health Science, Science and Engineering begin with a solid foundation of basic sciences in the first year. This superb facility is contributing to a globally competitive chemistry education for Wits students, and helping to train the next generation of skilled professionals.



## SITA AND WITS BOOST AFRICAN AVIATION & ICT SKILLS



Wits students in aeronautical, electrical and information engineering, computer science, and information systems are benefiting from scholarships granted by SITA, the world's leading air transport IT and communications specialist. Wits is privileged to be working with SITA, an organisation with truly global reach: worldwide, almost every passenger flight relies on SITA technology.

For three years from 2015 to 2017, SITA has granted Wits \$300 000, with the possibility of \$200 000 from 2018 to 2019. Through this collaboration with Wits, SITA's aim is to support the African aviation and information communication and technology (ICT) industry; to boost vital ICT skills; to support homegrown ICT educational development; to create

jobs by fostering an entrepreneurial spirit among students; and to lead research development across Africa. To this end, SITA is also sponsoring several annual memberships of Wits' new IT precinct, the Tshimologong digital innovation hub.

SITA is owned by the air transport industry, and is guided by around 400 members worldwide, including airlines, aerospace and airports. Serving in over 200 countries and territories, SITA is meeting the demands of the air transport industry around the clock, every day. SITA has a strong commitment to Corporate Social Responsibility, with the SITA Air Transport Community Foundation taking a lead role.



# PHILANTHROPIC FOUNDATIONS

The comprehensive list of philanthropic foundation donors since January 2015 can be viewed on page 51 or on the webpage Honours Board of Donors & Sponsors: [www.wits.ac.za/givingtowits](http://www.wits.ac.za/givingtowits)

Attracting diversified philanthropic and private funding is critical for Wits. This section is a snapshot of Wits' many philanthropic partners and donors.

Wits enjoys significant support from a wide range of philanthropic foundations and trusts in the United States, United Kingdom and South Africa. Amongst our largest philanthropic partners are the Andrew W. Mellon Foundation (Mellon), Kresge Foundation (Kresge) and Carnegie Foundation (Carnegie).

In addition to the spread of programmes they individually support, these foundations collectively support initiatives such as the **African Research Universities Alliance (ARUA)**. In 2015, in partnership with the University of Cape Town, Wits spearheaded the founding of ARUA, a consortium of 17 African universities with the goal of increasing African research capacity and collaboration.

### Robust, Africa-based research

To support more robust Africa-based research into the future, Wits is expanding its percentage of postgraduate students to 50% of the student body (up from the current 30%) by our centenary in 2022. Wits is fortunate to have a range of foundations that support a 'by South Africa and Africa for South Africa and Africa' approach to research, innovation, growth, development, democracy and justice.

This includes the Open Society Foundation and the Ford Foundation's fostering of democratic ideals, social justice and open societies; the Kellogg Foundation's support of community initiatives that tackle the causes of poverty; and the Discovery Foundation's support of the development of South Africa's scarce specialist healthcare skills and resources, notably in academic medicine, rural healthcare, specialist training and service delivery and innovation.

### Pioneering human rights

The support from these and other partner foundations goes back many years. An example is the thriving **Centre for Applied Legal Studies (CALS)**, based at the Wits School of Law. It is one of South Africa's oldest public interest law organisations, dating back to the apartheid era. Funded by the Ford Foundation, the Carnegie Corporation and the Rockefeller Brothers Fund, CALS was a pioneer in the development of human rights in South Africa, with an emphasis on research, education and a wide range of public impact litigation.



## The Andrew W. Mellon Foundation

The New York-based Andrew W. Mellon Foundations (Mellon) strengthens, promotes, and, where necessary, defends the contributions of the humanities and the arts to human flourishing and to the well-being of diverse and democratic societies.

Mellon assists Wits in advancing its standing as a centre of excellence, attracting and retaining the finest academics, stimulating novel postgraduate research, and providing opportunities for black and women postgraduate students to assist the University in growing the next generation of academics and professors.

### Examples are:

- The Mellon Postgraduate Mentoring Programme in the humanities and social sciences, and allied disciplines, such as law and economics.
- The Mellon Fellowships for Distinguished Visiting Scholars, to inspire, stimulate and introduce new thinking in cutting edge research areas of the humanities; and
- Research and publication support for younger scholars on Wits' staff who have completed a PhD and are engaged in research that is highly innovative in conception and that engages cutting edge theories and themes in African and global scholarship.

Dr Saleem Badat is Mellon's Programme Director of International Higher Education and Strategic Projects. He is a proponent of free education for all academically deserving students in financial need:

"Wits is one of the universities that we support in South Africa, and you can rest assured that a large philanthropic foundation like the Andrew W. Mellon Foundation will not be frightened off by the student protests. We have a long-term commitment to transformation in South African universities and will continue to work closely with universities to support their equity and development priorities."



## The Kresge Foundation

The Michigan, USA-based Kresge Foundation (Kresge) seeks to contribute to the quality of life of future generations through its support of arts and culture, community development, education, the environment and health.

Kresge funds the Leader Universities Initiative in partnership with Inyathelo: South African Institute for Advancement at Wits and several higher education institutions. It bolsters the private fundraising and advancement efforts of the University.

Mr Bill Moses, the Director of Kresge's education programme, says "Stronger advancement skills are critical to the success of South African universities and ultimately to getting more South African students into universities and completing degrees. Advancement is not just about raising funds. It is the practice of building, maintaining and improving support, skills and other resources to ensure the sustainability of an institution," he explains.

Another key project funded by Kresge is the Wits Analytics Project which is aimed at building the analytics capacity within the University, with the aim of supporting student success rates. It is part of the Siyaphumelela ("we succeed") initiative, which is building a high-level system to profile potential students and the schools from which they matriculated, to track their performance at Wits and to develop models that will enable the University to predict the performance of students. This will assist Wits in proactive and responsive support of students.



## The Carnegie Corporation

The Carnegie Corporation of New York (Carnegie) supports doctoral and postdoctoral researchers at Wits who are affiliated with the **Global Change and Sustainability Research Institute (GCSRI)**. It also supports doctoral and postdoctoral researchers in the **Carnegie Academic Medicine Programme**, Faculty of Health Sciences, and the **Carnegie-Wits Alumni Diaspora Programme**, also based in the Faculty of Health Sciences. The latter advances research collaboration and networking between leading health sciences alumni who live and work in academic institutions around the globe and their counterparts at Wits.

### The Carnegie Bale Undergraduate Scholarship Programme

This scholarship programme, initiated in 2007, promotes access to higher education in the fields of science and engineering for academically talented black women from disadvantaged backgrounds. The scholarship provides financial, academic, social and psychological support needed to the selected candidates, throughout their studies up to their honours level.

## New building for life-giving work

Wits Professor Ashraf Coovadia is the head of the Department of Paediatrics and Child Health at the Rahima Moosa Mother and Child Hospital and the Founding Director of Empilweni Services and Research Unit (ESRU) – a key research unit within the Department of Paediatrics and Child Health which focuses on HIV infected children and women.

ESRU started in 1999, mostly as a service to women who are HIV infected and to children who are HIV exposed. It has grown considerably over the years, focusing on interventions to prevent mother to child transmissions of HIV and developing earlier HIV diagnostic techniques for children exposed to HIV. Paediatric registrars at Wits learn about ESRU's studies when they spend time at Rahima Moosa and Chris Hani Baragwanath hospitals as part of their post-graduate rotation.

Since 2009 ESRU has been looking to expand its infrastructure to be able to expand on its phenomenal work. Fundraising efforts for the new building started in 2010 and the first major donor to step forward was the South African Muslim Charitable Trust (SAMCT), which committed to paying for a large portion of the building costs. This was the catalyst for further funding to be sought from the ELMA Foundation in the United States and Department of Higher Education funds through Wits University.

At the opening of the new three-storey ESRU building at Rahima Moosa on 26 May 2016, guest speaker Mr Mark Heywood of Section 27 recounted how he had met Prof Coovadia and his colleagues in 1999, at a time when AIDS denialism was at its height. Prof Coovadia and his team were at the forefront of advocacy around health rights, HIV research and treatment and have remained so ever since.



Wits was “a natural choice” when it came time to support: “Wits is one of the most important institutions in Africa and is central to the future of the continent.”



## A VOTE OF CONFIDENCE IN SOUTH AFRICA

A generous donation by San Francisco couple Mr Derek Schrier and Ms Cecily Cameron has made it possible for Wits to endow, in perpetuity, a Chair in Development Economics in the Faculty of Commerce, Law and Management. Their gift of \$1 million (about R15 million) was made through their United States-based EGG Foundation.

The Derek Schrier and Cecily Cameron Chair in Development Economics was launched in July 2015, with Professor Vishnu Padayachee, a Distinguished Scholar at Wits, as the first chair-holder.

“It is a rare privilege to be given the opportunity to research and rethink development economics issues, monetary policy, macro-economic policy and their place in South Africa,” says Prof Padayachee.

Mr Schrier, who holds degrees from Princeton and Stanford universities, first came to South Africa as a 25-year-old to work with the social research NGO Community Agency for Social Enquiry (CASE), headed

by Wits Visiting Professor Mark Orkin (BSc Hons 1971, PhD 1990), and to manage election polls for the ANC’s political campaign in the 1994 elections. “My time in South Africa impacted me in ways I couldn’t have imagined,” says Mr Schrier. “The experience helped shape who I am today. I am better off for it, and I owe South Africa a debt of gratitude.

He explains that Wits was “a natural choice” when it came time to support: “Wits is one of the most important institutions in Africa and is central to the future of the continent. Supporting a Chair in Development Economics is a pragmatic investment in the development of South Africa and the African continent.”

Mr Schrier and Ms Cameron hope that their support for the Chair will inspire similar initiatives from others with meaningful ties to Wits. “Together we can ensure that Wits continues its commitment to academic excellence, affordability, and accessibility,” says Ms Cameron, a former consultant with McKinsey & Company, who also holds degrees from Princeton and Stanford universities.

In spite of times of turmoil on South African university campuses and continued political and social issues in South Africa, Mr Schrier and Ms Cameron remain optimistic about South Africa’s future. “South Africans have shown that they can work out their problems together,” Mr Schrier comments. “They are tough and resilient, and have an active political culture.”



## COMMITMENT AND DISCIPLINE

Wits alumnus and SRC President (2010/11) Mr Mukovhe Morris Masutha is helping hundreds of students from rural areas and townships throughout South Africa to succeed at university.

In 2010, while he was a Wits student and the SRC President, he established an educational NGO called the Thusanani Foundation, of which he is now the CEO.

Thusanani is currently assisting over 500 students from the rural areas and townships to secure bursaries or loans, and to succeed in a wide range of disciplines at Wits and nineteen other universities throughout South Africa.

Like millions of South Africans, he grew up without any educational or financial advantages.

“From the age of one I was raised by my grandmother, Vho Nyamuka, as my mother worked as a cleaner in the city of Thohoyandou,” he explains. “My grandmother never went to school but she made sure I took my education very seriously and instilled in me a belief that I could do anything in the world.”

In addition to leading the foundation, he is currently doing his doctorate on Higher Education Management in South Africa through the University of Bath in the United Kingdom. “I’m working towards taking over Professor Adam Habib’s job at some stage!” he emphasises.

Asked what he believes is the key to success, he replies: “Discipline. Discipline is the basic of basics. Without it you cannot flourish in any degree, profession or life in general, which is why the Thusanani Foundation’s motto is ‘Let your marks pay your fees’.”

## PHILANTHROPY IN AFRICA

What is the role of philanthropy in Africa today, and how should it be pursued? These are two of the key questions being researched through the Chair in African Philanthropy at Wits Business School – a partnership between Wits and the Southern Africa Trust – with initial funding from the Ford Foundation.

### The Chair’s aims include:

- Generating knowledge, practice and advocacy in philanthropy in Africa;
- Growing postgraduate and postdoctoral capability in this field.

The Southern African Trust is a non-profit agency that funds and supports civil society organisations and initiatives in southern Africa. Its patron is Mrs Graça Machel and it ensures that the voices of the poor and marginalised are included in the development of poverty reduction policies. This is crucial to building democratic participation and creating accountable, responsive governance.

Globally, a number of Chairs in Philanthropy have been established, and this Chair establishes Wits as the African leader in the field. It also creates a unique opportunity to advance the relationship between African philanthropy and social entrepreneurship. These go hand in hand and an emerging trend is that philanthropists have become increasingly engaged in social entrepreneurship.

The Chair collaborates with other international leaders in the field – such as the Lilly family School of Philanthropy, which partners with the Indiana University (IU) School of Liberal Arts in Indianapolis, United States.



# TRUSTS, ENDOWMENT FUNDS & BEQUESTS

The comprehensive list of individual bequests since January 2015 can be viewed on page 45 or on the webpage Honours Board of Donors & Sponsors: [www.wits.ac.za/givingtowits](http://www.wits.ac.za/givingtowits)

Several alumni and donors have established Trusts, Endowment Funds and Bequests, large and small, that have helped to shape the University. This section is a snapshot of some of our late and living donors.



## THE PHILLIP TOBIAS EDUCATION TRUST

Professor Phillip Valentine Tobias spent over 60 years of his life at Wits, and passed away in 2012. He was internationally celebrated for his research in the field of palaeoanthropology, but his greatest loves were the study of anatomy and the training of students. It is fitting that his Trust provides bursaries and scholarships for students in financial need in all fields of study. He expressed that there should be no discrimination in terms of race, colour, creed or gender.

The Phillip V. Tobias building, the latest addition to Wits' academic, teaching and administrative properties is situated in the Faculty of Health Sciences precinct. Prof Tobias' memory lives on through the building, with each floor containing art, photographs, quotes and mementos that tell his remarkable life story.

## SIR DONALD GORDON & SOUTH AFRICA'S PRE-EMINENT PRIVATE TEACHING HOSPITAL

We pay tribute to Sir Donald Gordon (honorary DEconSc 1991) and his family, whose R120 million donation to Wits in 2002 is the largest single donation ever received by Wits.

Gordon, a Chartered Accountant by profession, founded Liberty Life in 1957 and Liberty International PLC in 1980. In June 2005 he was knighted in recognition of his services to the arts and business. He has an Honorary Doctorate in Economic Science from Wits.

Gordon's legacy continues to make a considerable impact in South Africa through the Wits Donald Gordon Medical Centre (WDGMC) and the Donald Gordon Auditorium at the Wits School of Governance – the leading regional institution in the arena of governance, policy and development management for the public sector.

"The WDGMC is the first private teaching hospital in South Africa and Wits is the only university in South Africa that owns its own hospital. We offer specialist and sub-specialist training, which is critical for South Africa with its shortage of medical experts," says Dr Sue Tager, neurologist and CEO of the WDGMC since 2008.

With the funds from the Gordon donation, Wits was able to purchase the Kenridge Hospital in 2002, with Mediclinic, the international private hospital group, becoming a 49.9% shareholder in 2005.

"We train specialists and sub-specialists in association with state hospitals, and provide training in sub-specialist disciplines that were not available before in South Africa, such as solid organ transplants and geriatric medicine," explains Dr Tager.

"We are the only facility in South Africa today that does 'related living donor liver transplants', usually parent to child, which we started in 2012," Dr Tager adds. The paediatric and adult liver transplant service is offered to all citizens. Public hospital patients are subsidised by the state. The results are comparable internationally and a high percentage of the liver transplant patients enjoy a full recovery.

"We pride ourselves on being able to train people at a level that is not always available in the public sector, with access to top private sector practitioners," says Dr Tager.



# PUBLIC SECTOR FUNDING & STATE-OWNED ENTERPRISES

The comprehensive list of international and local public sector donors and sponsors since January 2015 can be viewed on page 51 or on the webpage Honours Board of Donors & Sponsors: [www.wits.ac.za/givingtowits](http://www.wits.ac.za/givingtowits)

In addition to higher education subsidy funding from government, Wits receives donations, sponsorships and support from a wide range of state-owned enterprises and other public sector entities. A snapshot of some of these is featured here.

## GROWTH AND DEVELOPMENT IN THE CITY OF JOBURG

Joburg is the economic heartland of South Africa, generating approximately 17% of South Africa's wealth, with a growth rate above the national average. Notwithstanding Joburg's prominent economic status nationally and on the continent, economic growth rates in the City, and in South Africa generally, have been well below the pace required to address employment and socio-economic challenges.

Towards addressing this, a co-funded collaboration between the City of Joburg and Wits resulted in the establishment of the Wits-based Chair in Economic Growth and Development, which provides research to support economic growth and policymaking in the City of Joburg.

The primary funder is the City, which provided an upfront investment of R5 million over five years. The Chair will serve to grow novel postgraduate research and specialists in this field, and to support the economic growth, development and policy goals of the Economic Development Department (EDD) of the City of Joburg.



# PIONEERING PARTNERSHIPS

- SETAs, corporates, Wits and other South African universities

The R34 million, three-year partnership between Wits and the Manufacturing, Engineering and Related Services SETA (merSETA) pursues transformational goals through the development of engineering skills, with an emphasis on black South African students and graduates. The Departments of Mechanical and Industrial and Engineering at Wits are driving the development of these skills.

Five are outlined here:

### The Engineering Graduate Placement Programme

This is a pioneering new programme at Wits, and unique across the BSc Engineering programme space in South African Higher Education Institutions. merSETA will support this programme by finding employment for BSc Engineering students who have completed their second year. They will spend one year with host employers, and then join the academic stream again for third and fourth year. merSETA strongly supports the placement of students in companies at an intermediate stage of their academic engineering programmes, to achieve some experiential exposure to professional practice. It is prepared to pay approximately R64 800 per student to incentivise this process.

### Breaking Institutional Boundaries Programme

Wits will support the University of Venda in establishing fundamental engineering skills and capacity that can lead to advanced engineering skills.

### Tutorial programme

This project supports transformation by increasing positions for new black academic staff to build the academic skills pipeline.

### MSc and PhD bursaries

For the development of high-level skills in mechanical, electrical and aeronautical engineering.

### Targeting Talent Programme

This programme boosts the maths and science skills of school leavers, and offers them career guidance and academic orientation. It increases their chances of university entrance and success across any of the Science Technology Engineering Mathematics (STEM) fields or institutions. The merSETA project will fund the upscaling of this programme to reach more rural and disadvantaged schools.

The intention is for Wits to channel about 26 students per annum to merSETA-recommended companies, and for the per student funding to accrue to Wits rather than the host company, for the purpose of subsidising learner stipends.

### The benefits to the companies would include:

- Significant B-BBEE opportunities associated with this programme, since the revised B-BBEE Codes introduced internships as a Category B programme, allowing companies to claim the salary spend on interns as part of their 6% of payroll BEE training spend;
- A closer relationship between Wits Engineering Schools and the company. Significant benefits to the company can be derived from this relationship, where, for example, Wits can lead performance improvement projects within the plant of the company. The savings derived from work of this sort could easily fund the contribution of the company to this sort of scheme;
- The company would benefit from the talent of engineering students-in-training, rather than entry level technicians, in its operations; and
- The company can use this experience as part of an extended recruitment and selection process, with a view to attracting the best engineering talent from the cohort on completion of the programme.





## PARTNERING FOR SYSTEMS SOLUTIONS

Transnet, a state-owned enterprise, is responsible for transporting freight reliably and safely. The Wits Transnet Centre of Systems Engineering (TCSE) was established in 2012 to bridge academia and industry in order to take systems engineering to all stakeholders, across techno-social and organisational boundaries.

This is a very necessary skill which is required to advance the needs and goals of Transnet's strategies outlined in the Long-Term Planning Framework (LTPF) and the company's Market Demand Strategy (MDS).

"The TCSE receives substantial sponsorship from Transnet, and we work very closely with the Transnet Group and its planning, engineering and operations divisions," explains the Acting Director of the TCSE, Professor Beatrys Lacquet. "The TCSE undertakes a range of academic activities and projects, including research, training and advising industry, as well as building human capacity in systems engineering and related fields to empower organisations."

Transnet sponsors its employees to pursue postgraduate studies through the TCSE in systems-related subjects and other areas. For Wits postgraduate students, the Centre offers a Master's and PhD degree, the former in Systems Engineering, the latter in the Centre's range of Systems Competencies as well as Human Factors & Safety. The Centre also presents a range of short courses, seminars, collaborative workshops and tutorial/master classes for Transnet and industry, empowering individuals, companies and industries at large.

"R360 billion over ten years has been assigned for capital expansion projects, as determined by Transnet's Market Demand Strategy (MDS), which forecasts and creates capacity ahead of demand," Prof Lacquet continues. "This includes new rolling stock, new railways, ports expansion (Transnet operates South Africa's eight national ports) and multiple fuel pipeline improvements.

"To ensure maximum value, the different restructured Transnet divisions need to operate in a systemic way through the trans-disciplinary systems approach. The TCSE has developed into Transnet's 'partner for systems solutions' and we facilitate collaborations with the vast expertise within the Wits community, other universities, research and science councils, and industry partners."

## HIGH END, CURRENT AND FUTURE IMPACT

The Department of Science and Technology (DST) under the leadership of Minister Naledi Pandor is a significant supporter of research and innovation in South Africa. As a government department its responsibility is largely in the policy and strategy space, but the DST also makes a significant impact via its agency, the National Research Foundation (NRF).

The NRF supports and promotes research via funding of research projects and awarding postgraduate student bursaries. It also manages a number of national research facilities which house large collections of scientific equipment that are used by the nation's scientists.

More specifically, the DST and NRF support research at Wits by funding six DST-NRF Centres of Excellence. These centres focus on the following research fields: Biomedical TB Research, Integrated Mineral and Energy Resource Analysis, Human Development, Mathematical and Statistical Sciences, Palaeoscience, and Strong Materials.

They include multi-disciplinary research groups, some from Wits and some from other South African universities and science councils. The South African Research Chairs Initiative (SARChI) is also supported by the DST and NRF. These Chairs are aimed at retaining and growing high-end research capacity in South Africa. Wits hosts 26 SARChI Chairs. The annual investment made by the DST and NRF into these research efforts is close to R118 million.

Most of the above-mentioned initiatives have a strong focus on the development of knowledge that can support the growth and development of our country, and also pursue answers to future problems and needs. Furthermore, the NRF supports the development of the next generation of research-focused academics through its Thuthuka Programme. Overall, the NRF invests about R110 million into early career academic research as well as fundamental research at Wits.

## WITS LEADS THE WORLD

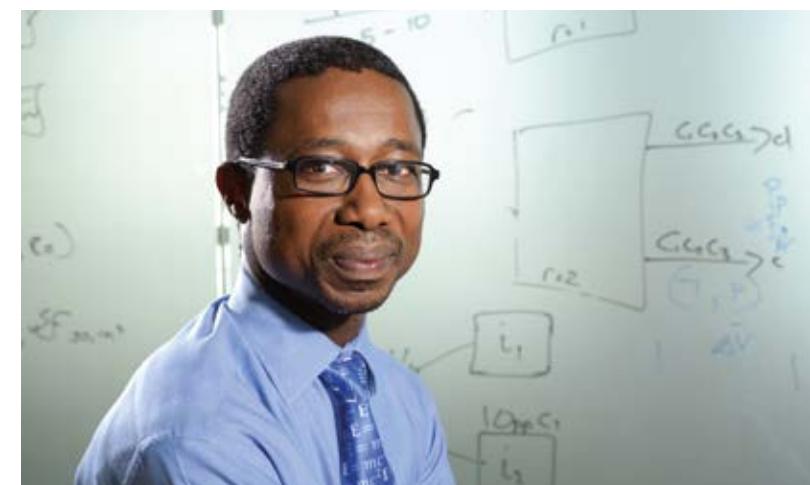
Three of Wits' many world-leading personalities are Professor Lee Berger, Professor Helen Rees and Professor Thokozani Majozi. They are renowned for their breakthroughs, outstanding research and intellectual achievements. They attract considerable funding for Wits-led projects and significantly contribute to the growth of the next generation of researchers.



Prof Helen Rees OBE is an internationally renowned expert in HIV prevention, reproductive health and vaccines. She is the founder and executive director of the Wits Reproductive Health and HIV Institute (Wits RHI) – the University's largest research entity. Wits RHI is a World Health Organisation and UNAIDS Collaborating Centre in reproductive health and HIV respectively, and a South African Medical Research Council Collaborating Centre in HIV and TB. Her research and global reputation has attracted significant financial and intellectual investment in this field, including phenomenal investment in postgraduate and postdoctoral research. In 2001 Prof Rees was made an Officer of the British Empire (OBE) for her contribution to global health. She is currently leading the development of Wits University's Flagship Centre for Vaccinology together with Professor Shabir Madhi and other senior Wits University scientists.



Prof Lee Berger is a Research Professor in Human Evolution and the Public Understanding of Science at Wits, and an Explorer in Residence at the National Geographic Society. He has founded the not for profit Lee R. Berger Foundation for Exploration and he is a founder of the Palaeoanthropological Scientific Trust and a founding Trustee of the Jane Goodall Society of South Africa. Prof Berger is currently the Director of one of the largest palaeontological projects, leading over 100 researchers in investigations of the Malapa site in South Africa, as well as leading the Rising Star Expedition in 2013, resulting in the discovery of the largest primitive hominin assemblage in history.



Professor Thokozani Majozi of the School of Chemical and Metallurgical Engineering and DST/NRF SARChI Chair in Sustainable Process Engineering has repeatedly been honoured for his outstanding innovations and contributions to science, engineering and technology in this era of sustainability. In 2016 he was the co-winner of the Engineering Capacity Development Award at the National Science and Technology Forum (NSTF)-South32 Awards. One example of his innovation is his work on batch processes, which has advanced this field, where a widespread lack of technical know-how has resulted in adverse environmental impacts. His development of a continuous process integration technique for systems involving membrane and water networks has been applied to one of Eskom's power stations, Kriel. This has resulted in more than 10% savings in fresh water, with an accompany R5 million cost saving in the first six months.



	DONATION	SPONSORSHIP
Contributor	Donor	Sponsor
Examples of Contributors	Individuals Trusts and Foundations Corporate CSI departments	Corporate HR Departments Corporate Marketing Departments
Description	Donations are 'gifts' for which no return is or should be asked or given, and can only generate a strictly limited level of benefits.  If there are no conditions to the donations, they are <i>bona fide</i> donations.	Cash sponsorship is the payment of money by a business for the purpose of promoting the business's name, products or services. Sponsorship may also be in kind – products, time or services.  Sponsorships form part of a business' general HR, promotional or marketing spend and may encompass elements of corporate or social investment.
Nature of Transaction	<ul style="list-style-type: none"><li>• Philanthropic (<i>bona fide</i> gift)</li><li>• No <i>quid pro quo</i> (i.e. no reciprocity such as commercial value for the donor)</li></ul>	Reciprocity i.e. the sponsor expects something in return, for example: <ul style="list-style-type: none"><li>• Naming opportunity</li><li>• Visibility to a target audience</li><li>• Marketing and contact opportunities</li><li>• Intellectual property or output of research conducted</li><li>• HR talent pipeline</li></ul>
Benefits to Contributor	<ul style="list-style-type: none"><li>• Tax rebate certificate according to Section 18A of the Income Tax Act as amended</li><li>• B-BBEE credits</li><li>• Possibility of naming in recognition of substantial contributions</li></ul>	<ul style="list-style-type: none"><li>• Skills development</li><li>• B-BBEE credits</li><li>• Tax benefit</li></ul> Sponsorships are not bona fide gifts and are not eligible for tax rebate certificates.

# WAYS TO GIVE TO AND SUPPORT WITS

Support for Wits has never been more critical as South Africa faces unprecedented challenges and as the University's traditional sources of income – government support and private tuition fees – now constitute less than 60% of our funding needs.

In an increasingly competitive and knowledge-based world economy, in a young democracy in transition, in a burgeoning Africa, you can help ensure that Wits remains a vital and positive agent for transformation and global leadership in higher education.

Your contribution to Wits will support:



Groundbreaking Research



Top Researchers and Academics



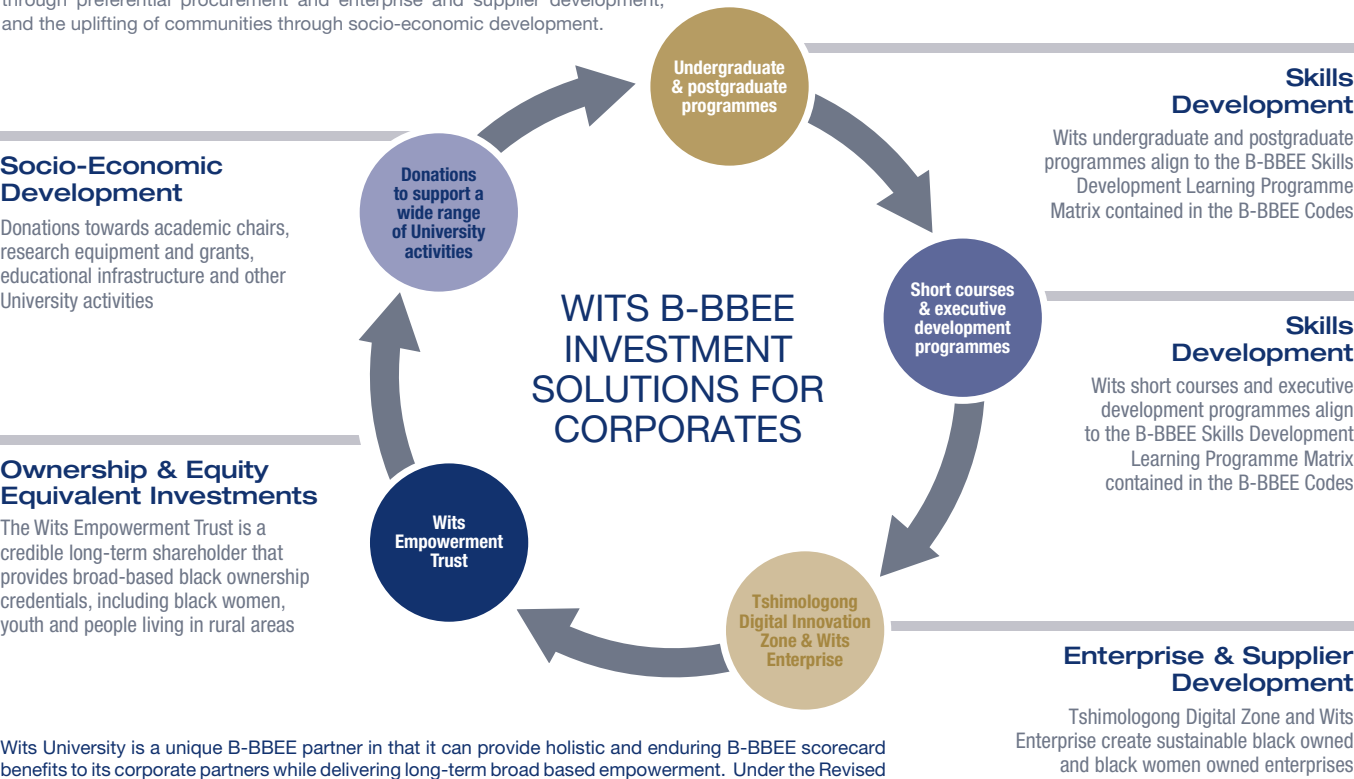
Bursaries and Scholarships



Development of Infrastructure

Broad-based Black Economic Empowerment (B-BBEE) focuses on increasing equity ownership, management and control of businesses by black people, and improving black representation in all levels of employment. It also promotes the development of skills within a business, the nurturing of black entrepreneurship through preferential procurement and enterprise and supplier development, and the uplifting of communities through socio-economic development.

## B-BBEE INVESTMENT SOLUTIONS



Wits University is a unique B-BBEE partner in that it can provide holistic and enduring B-BBEE scorecard benefits to its corporate partners while delivering long-term broad based empowerment. Under the Revised B-BBEE Codes of Good Practice, corporate partners can, by investing across the wide spectrum of Wits offerings, claim scorecard points under the three priority element codes: 100 (Ownership), 300 (Skills Development), 400 (Enterprise and Supplier Development) and code 500 (Socio-Economic Development).



# HOW TO GIVE

## 1 Make a donation to Wits

You can make a donation to Wits by cheque, online, or by electronic funds transfer. All donations to Wits are tax deductible in accordance with Section 18A of the Income Tax Act 58 of 1962.

To give by cheque, please make your cheque out to “Wits Foundation” and mail to: Wits Foundation, P O Box 107, Wits 2050, South Africa

To give online, please go to [www.wits.ac.za/givingtowits](http://www.wits.ac.za/givingtowits)

For more information, please contact:  
Peter Bezuidenhoudt, Director, Development and Fundraising  
T +27 (0)11 717 9701 | E [donations@wits.ac.za](mailto:donations@wits.ac.za) | [www.witsfoundation.co.za](http://www.witsfoundation.co.za)

## 2 Make a donation to The University of the Witwatersrand Fund, Inc.

US residents can make a fully tax-deductible donation by cheque or online to the University of the Witwatersrand Fund, Inc., (Wits Fund) a 501(c)(3) tax-exempt organisation (recognised by the U.S. Internal Revenue Service). In compliance with IRS regulations, the Board of Directors of the Wits Fund maintains complete discretion over allocation of gifts to Wits. Gifts to Wits Fund qualify for an income tax deduction to the limits allowed by law.

To give by cheque, please make your cheque payable to “The University of the Witwatersrand Fund, Inc” and mail it to: The University of the Witwatersrand Fund, Inc. PO Box 7101, New York, NY 10150 or send it by fax to 212.371.3235.

To give online, please go to [www.witsfund.org/donate](http://www.witsfund.org/donate)

For more information, please contact:  
Nooshin Erfani-Ghadimi, Wits US Representative  
T +1 425 344 7069 | E [nooshin.erfani-ghadimi@wits.ac.za](mailto:nooshin.erfani-ghadimi@wits.ac.za)

## 3 Make a donation to the Wits Foundation UK

UK residents can make a donation by cheque or online to the Wits Foundation UK, a charitable organisation for the advancement of education, in particular the University of the Witwatersrand. The Foundation is able to reclaim tax on the donations of UK-resident taxpayers provided Gift Aid requirements are met, and higher-rate UK taxpayers may reclaim tax of their own via their annual UK tax returns.

To give by cheque, please make your cheque out to “Wits Foundation UK”, and mail it to: The Chairman, Wits Foundation UK, c/o Lynda Murray, Wits Development & Fundraising UK, 2nd floor, 35 Petersham Road, Richmond, TW10 6UH

To give online, please go to [www.wits-UK.org](http://www.wits-UK.org)

Charitable registration number: 1087539  
Company incorporation number: 04217424

For more information, please contact:  
Lynda Murray, Development and Fundraising UK  
T +44 (0)757 093 0704 | E [lynda.murray@wits.ac.za](mailto:lynda.murray@wits.ac.za) | [www.wits-uk.org](http://www.wits-uk.org)

## Honours Board of Donors & Sponsors January 2015 onwards

The donors listed here include all those who have directly contributed through the Wits Development and Fundraising Office’s (DFO) Wits Foundation SA bank account, as well as through The University of the Witwatersrand Fund, Inc. (Wits Fund) in the US, and Wits Foundation UK. The lists exclude donations made directly to other Wits entities where the DFO has not been involved in the process, and every attempt has been made to respect anonymity where requested. While the DFO has made every effort to verify the accuracy of the lists, please do not hesitate to contact us if there are any errors or omissions at [www.wits.ac.za/givingtowits](http://www.wits.ac.za/givingtowits). We thank you for your support.

### BEQUESTS

Estate Late Basil Stein  
Estate Late Coral Handley  
Estate Late David Francis Paton  
Estate Late Harry A Broekman  
Estate Late Harry James Barker  
Estate Late Jacob Yehuda Graff  
Estate Late Nelson Rolihlahla Mandela  
Estate Late Rose Lily Lurie  
HRS Nolte Bequest  
Patterson Trust  
Phillip Tobias Educational Trust

### INDIVIDUAL DONORS

Aadil, Muhammed  
Abbott, Thomas David  
Abdula, Hailey  
Abiye, Tamiru Alemayehu (Dr)  
Adams, Brett & Rose  
Adler, Jill Beryl (Professor)  
Agocs, Fedi  
Ahyodeen, M  
Alexander, Graham Brian  
Alexander, Mark Gavin (Professor)  
Allais, Lucy  
Allebbhai, Shuaib  
Alves, Manhaes  
Ama,Grace  
Amanjee, Abdullah  
Amaradiw, C S  
Amerding, Pippa  
Amoils, Hymie Leslie  
Andrew, Brian Charles  
Andrew, Mark  
Andrew, Michael Ray  
Antrobus, Dennis Mark (Advocate)  
Arbuthnot, Patrick (Associate Professor)  
Arcadia, A  
Archibald, Sally Ann  
Argyrou, Argynos  
Arndt, S (Dr)  
Arteiro, Kerry Nicole  
Atkinson, Kevin John  
Attwood, Gillian Ann (Dr)  
Attwood, Jennifer Susan  
Ayivor, Adjoa Elsie Ann  
Backwell, Peter William John  
Bailey, Ivor Ian  
Bailey, Pamela Margeret  
Balfour, Sandy  
Balkwill, Kevin (Professor)  
Ball, R L  
Ballim, Yunus (Professor)  
Ballot, Daynia Elizabeth (Professor)  
Bam, Angela Phindile  
Band, Angus William Balharrie  
Barber, Patricia  
Barker, Roger (Dr)  
Barker, Walter Roy  
Barling, Julian Irvine (Professor)  
Baro, Giles  
Barratt, Sara & John  
Barrett, Andrew John  
Barry, Brendan Michael  
Batohi, Lesley  
Bauskin, Barbara  
Baxen, Mary (Professor)  
Bayne, Brian John  
Beaconsfield, Marie  
Beerbul, Nerissa  
Beeton, George Henry

Bekker, Tanya Lee-Anne  
Bell, Claire  
Belman, Michael (Dr)  
Benson, Danielle  
Bensted Smith, Jan  
Benxa, Odwa Mashwabada  
Benya, Asanda Perseverance  
Berchowitz, David (Dr)  
Berger, Howard Mervyn (Professor)  
Berger, Margot (Dr)  
Bergman, Stanley Manfred  
Berman, Moira  
Berman, Myrtle  
Bernard, David B (Dr)  
Berzen, Hertzog (Dr)  
Bester, John Gerard  
Bethlehem, Lael Irene  
Bevan, Elizabeth Joan  
Bez, D  
Bezuidenhoudt, Peter Ulrich  
Bhagirathi, Sheekal  
Bhagwandas-Jogibhai, Kamal  
Bham, Azhar Ebrahim  
Bhikha, Harshad  
Bhoola, Fatima  
Bhorat, Aslam Ebrahim (Dr)  
Bihl, Joseph Friedrich  
Billett, Robert Emilio  
Bird, Theresa Leigh  
Bishop, Graham  
Bizos, Damon Basil (Dr)  
Bizos, George (Advocate)  
Blackbeard, Graham Alan  
Blackburn, Duncan Thomas  
Blackie, D  
Blagden, Henry  
Blakeley-Smith, B C  
Blanckensee, Derek  
Blumberg, M J  
Bobat, S  
Bode, Moira (Dr.)  
Bodington, L  
Boers, Marion Jean  
Bofilatos, Gerasimos (Advocate)  
Bolton, Michael  
Bona, Fleur Celeste  
Bonthuys, Elsje (Professor)  
Bootcov, Michelle Renee  
Borthwick, John Alistair Stewart  
Bosazza, Michael Faraday  
Boshoff, Franz  
Botha, Adrian  
Botha, D J  
Botha, Deborah Joan  
Botha, Elizabeth Mathakga  
Bother, Inga & Justin  
Bottom, Geoffrey Norman  
Botts, Emily Anne  
Boyns, Michael Robert David  
Bradbury, Jill (Professor)  
Bradfield, Bruce (Dr)  
Bradlow, Steven (Dr)  
Brady, D  
Brebner, Bianca Leigh  
Breckenridge, Burns  
Bredenkamp, Janine Margot  
Brenner, Joni  
Brewer, Rowan Michael  
Bricker, Nadine  
Brink, Brian Antony (Dr)  
Brink, David Charles

Broccardo, Louise  
Brodie, Karin (Professor)  
Brodie, Mark Alan  
Bromfield, Kenneth Owen  
Broomberg, Jonathan (Dr)  
Brown, Michael Anthony John  
Brown, Raymond (Dr)  
Brown, Stephen  
Bruyns, Mary Elizabeth (Dr)  
Buccas, Suraiya  
Budlender, Steven (Advocate)  
Bulbulia, Feroza  
Bulbulia, Haroun  
Bull, Christopher Rodney  
Buntman, Barbara Ilona  
Buntman, Fran Lisa (Professor)  
Burgess, Colleen (Professor)  
Burgess, Steven Michael (Professor)  
Burman, Erica (Associate Professor)  
Burns, Iain  
Buthele, W  
Butler, John  
Cachalia, Firoz (Professor)  
Cahill, Lee Alison  
Canham, H  
Cape, Isobel Mary  
Cardoso, Germano  
Carliell, Douglas John  
Carlisle, Paul Joseph  
Carman, Mary Elizabeth  
Carman, Nigel Dean  
Carman, William Frederick (Dr)  
Carosin, Lucia Maria  
Carrington, J  
Carruthers, E J  
Carswell, Peter  
Cassim, Z  
Castille, Aidan Michael  
Castle, Penelope (Associate Professor)  
Cathrall, Reginald Edward  
Cele, Nozipho Faith  
Cesaypf, C  
Chagan, Vimal  
Chamberlain, Cheryl Sue  
Chamberlain, Lisa  
Chan, Marian (Dr)  
Chapman, Angie  
Chapman, Heather Joan  
Charlton, Julia Dorothy  
Charlton, Sarah Margaret  
Chauke, Nhlahla Ashley  
Chen, Andrew  
Cheng, Michael  
Cherian, Bindu Susan  
Chetty, M  
Chhana, Yogarani  
Chilvers, Garth Cyril  
Christie, Arthur Norman Roy  
Chungtae, Yim  
Cieverts, Sergio  
Claasen, Lance Peter  
Clement, Joanne Helene  
Cleve, Joe  
Clingman, Stephen  
Clowes, Richard  
Cochrane, Neil Craig  
Coetzee, Hendrik (Dr)  
Coetzee, M  
Cohen, Brian  
Cohen, Chana Maister  
Cohen, Charles Henry



Cohen, Doreen  
Cohen, Lesly Karen  
Cohen, Max  
Cohen, Yvonne Liebe  
Cole, Desmond Thorn (Professor)  
Cole, Patrick  
Conrads, Martin Andreas (Dr)  
Cook, Paul Langabi Hogan (Dr)  
Cooke, Richard Anthony (Dr)  
Cooper, P  
Cope, Edwin (Dr)  
Costa, Anthony (Dr)  
Counihan-Greene, Helen  
Coutsoudis, A  
Coville, Gareth Oliver  
Coville, Neil John (Professor)  
Cowley, Nicholas Paul  
Craig, C M  
Craig, Derrick James  
Craig, Douglas Kenneth (Dr)  
Craig, Joan (Dr)  
Crawley, Diann Joyce  
Creamer, Kenneth Peter (Dr)  
Cresswell, Clare Alison  
Croeser, David Charles  
Crompton, S  
Crosley, Carol Gail  
Crouch, Andrew Martin (Professor)  
Crouch, Marj  
Crozier, Carol  
Cruickshank, D  
Culwick, C E  
Cunningham, Claude Victor Bruce  
Cuzen, Pauline Anne Leckie  
Da Silva, R  
Dakwa, Tafara  
Damian, Justin  
Dancer, Richard Errol  
Dangor, Justine Therese  
Daniels, G  
Daskalak, C  
Davidson, June  
Davies, Hilton Keith (Dr)  
Davis, Michael  
Daweti, Vuyo  
Dawood, Halima (Dr)  
Dawson, Jeremy  
Daya, A  
de Carpentier, John (Dr)  
de Clercq, Francine (Dr)  
de Klerk, Nancy Jean  
de Koker, Nico Pieter Jan  
de Kretser, J A  
de Robillard, Pierre  
Dehon, Estelle Alexandra Michelle  
Dey, Lawrence Grant  
Diar, Amrat  
Dick, N E  
Dickinson, D  
Dirmeik, Rosemary Ursula  
Dirr, Heinrich Wilfred (Professor)  
Dison, Laura  
Dixon, Kerry n Leigh (Dr)  
Dlamini, Luyanda  
Dlamini, M G  
Dlamini, Ruben (Dr)  
Dlamini, S  
Dlamini, Vusumuzi  
Dludla, Sifiso  
Dobe, A T  
Doctor, Brian Ernest  
Dodi, Asanda  
Dodson, Alan  
Doidge, Megan Caroline  
Dominguez-Whitehead, Yasmine  
Doves, Sief  
Dreyer, Caroline Joanne (Advocate)  
Dreyer, Ivan Walter  
du Preez, Pieter Johannes Jacobus

Du Toit, Cheara Cherise  
Dube, N  
Dube, Pamela (Dr)  
Dugger, Chloe  
Dulabh, Harshila Ravjee  
Dwolatzky, Barry (Professor)  
Eagle, Gillian Teresa (Professor)  
Eaton, Brian John  
Ebrahim, Solly  
Eikens, Anna  
Elferink, Gerron Herman  
Elferink, Roland Gerron  
Eliasov, Ariel Simon  
Eliastam, Michael (Professor)  
English, Terence Alexander (Sir)  
Esser, Jan Daniel (Professor)  
Essers, Liza  
Essop, Tasneem  
Everatt, David (Professor)  
Faber, J E M  
Faerber, Eric Norman (Dr)  
Fainman, Alan  
Falkof, N (Dr)  
Fani, I  
Faull, Kori Kai Toska  
Favish, Judith Shamith  
Fedler, Carolyn (Dr)  
Fenton, Deborah Jean  
Ferguson, Rene Shannon  
Fernandes, Desmond Brian (Dr)  
Ferreira, Ana Cristina (Dr)  
Ferreira, Petrus Hendrik  
Fieggen, Graham (Dr)  
Filitz, John  
Finchilescu, Gillian (Professor)  
Fine, David (Dr)  
Finkelstein, Alon & Elyse Steiner  
First, Martin Roy (Dr)  
Fischer, Julette Brenda  
Fish, Peter  
Fisher, Jeffrey Barry  
Fisher, Katharine Nicole  
Fitton, Jane  
Fitzgerald, Alexandra Louise  
Fleisch, Brahm David (Professor)  
Fletcher, Denise  
Fletcher, Timothy Sean  
Fonn, Sharon (Professor)  
Fourie, Dessedeirous Erwin  
Franklin, A E  
Freedman, Helen Desiree  
Freislich, Mary Ruth (Dr)  
French, Debbie  
Friedman, Joseph (Dr)  
Friedman, Mandy  
Friedman, Michelle  
Frittella, Adriano  
Fryer, Robin Anthony  
Fuchs, Menahem  
Funk, B C  
Gabriels, K  
Gafinowitz, Nicola  
Gakpo, Esenam Eleanor  
Galane, Lesiba  
Gamsu, Sheila  
Garrett, Gary John  
Garrine, Vusani  
Garrun, Clifford Hayman  
Gastrow, Claudia  
Gaylard, Gerald Paul (Associate Professor)  
Gbadamosi, R O (Professor)  
Gebbie, Timothy John (Dr)  
Geel, Jennifer (Dr)  
Gennrich, Antoinette Louise  
Georgiannis, Magdalene  
Getrouw, E  
Gibbs, Grace Martha  
Gibson, Iain Hugh Norval (Dr)  
Gilbert, Tal & Jarques

Gilchrist, Gerald Seymour (Professor)  
Gilchrist, John  
Gill, Jonathan  
Gillespie, K M  
Ginsberg, Jack Mitchell  
Ginsburg, Philip (Advocate)  
Giorza, Theresa  
Girdwood, G W  
Girdwood, Robert William (Dr)  
Glaser, C  
Glass, Ian Orestar  
Glover, Digby John  
Godsell, Gillian (Dr)  
Godson, Phil  
Goede, Jan Gerard  
Goldblatt, Beryl (Dr)  
Goldblatt, Beth Ann  
Goldin, Neville  
Goldschagg, Paul Louis (Dr)  
Gomes, Pedro  
Gomperts, Edward David (Dr)  
Gongo, Kuselwa  
Goodman, I A  
Goolam, Huneiza  
Gordon, Peter Crichton (Professor)  
Gordon, Ronald Abe  
Gordon, Yehudi Boris (Dr)  
Gore, Lauren  
Gorvy, Manfred  
Gottlieb, Paul Lenin (Dr)  
Gotz, Anthony Guy  
Govender, D (Dr)  
Govender, Navan  
Govender, Thirushka Thrishana  
Gqoba, Siziwe Sylvia  
Grant, M  
Granville, Gideon Simon  
Gray, Alexandra  
Gray, Barbara Jill (Dr)  
Greenberg, Mark Lawrence (Dr)  
Greenblatt, Michael (Dr)  
Grey, J Y  
Grice, J  
Grindley, Joanna  
Gritzman, Marcus Charles David (Dr)  
Gross, Ian (Dr)  
Grove, Arrie (Dr)  
Gueth, Dietrich (Dr)  
Gullberg, Lena (Advocate)  
Habib, Adam Mahomed (Professor)  
Hackner, Errol Lewis (Dr)  
Haddow, Lesley Yvonne  
Hall, Miranda Louise  
Hall, Reith  
Hamilton, Gillian Kay  
Handley, Jonathan Justin Francis (Dr)  
Hannah, J  
Hanouch, Michel  
Harber, Anton Paul (Professor)  
Harber, Harriet  
Harding, S A  
Harichund, Vishal  
Harkhu, Niven  
Harkishan, Magan  
Harris, Julia  
Harris, Susan Ruth  
Hart, Mary Lilian  
Hartman, Ella (Dr)  
Hartman, G L  
Hassan-Lundell, Rabia  
Hassim, I  
Hassim, Y  
Hatfield, William Krige  
Hatia, Z I  
Hayward, Andre Charl  
Hayward, Gideon Retief  
Hazan, Joshua  
Hazelhurst, Scott Edward (Dr)  
Heaney, Bobby

Heaney, Julia  
Heidstra, Peter Tjeerd  
Heinke, Rex S  
Heller, Joshua & Phyllis  
Hennessy, Mark  
Henning, Gerhard  
Herdan, Leo Thomas  
Hersowitz, Selwyn M  
Hester, Marian  
Heydt, Helmut (Dr)  
Heyman, Sydney Isidore (Dr)  
Hildebrandt, Eugenie (Dr)  
Hill, Jill Darrell  
Hintze, Karin Sandra  
Hobbs, Joanne Rosa  
Hochfeld, Penelope  
Hodkinson, Harold John (Dr)  
Hodkinson, Mary Elizabeth Dale  
Hofmeyr, Jane Mary (Dr)  
Hogarth, Roger James  
Hokee, Ebrahim  
Hood, Tarryn  
Hoogendoorn, Gijsbertus  
Horn, A  
Hornberger, J C  
Horne, Fiona Lindsay  
Hornsby, David John  
Horwitz, Geoffrey Barry  
Horwitz, Steven & Gordon  
Hoy, Maria Ada  
Hubbart, Bernadette  
Huchzermeyer, Marie (Associate Professor)  
Huddle, Kenneth Robert Lind (Professor)  
Hudleston, Sarah E  
Hughes, A P  
Hughes, Mark Clinton  
Huma, N  
Humby, Tracy-Lynn  
Hunt, Denis Frank  
Hunter, Rosemary Therese  
Hyde, John (Dr)  
Hyde, Paul Vincent Bernard (Dr)  
Hyslop, Glynis  
Ichikowitz, Ivor  
Imbayarwo, Taurai (Dr)  
Iqani, Mehitabel  
Ivanovic, Nikola Predrag  
Jaca, N  
Jackson, Chantelle  
Jackson, L W  
Jacobson, Robert Julian (Dr)  
Jacoby, Barry Dane  
Jagjewan, Mayur  
James, Caroline Frances  
James, C S  
James, Justic  
James, Slim  
Jammine, Azar Paul (Dr)  
Jammy, Barry  
Jandrell, Ian Robert (Professor)  
Jansen van Nieuwenhuizen, Andries Hendrik  
Japp, G G  
Jardine, Jenna  
Jardine, Patrick  
Jarvis, Linda  
Jeffrey, Clare Rosemary  
Jhetam, S  
John, David Guest  
Jolly, Nanette Elizabeth (Dr)  
Jones, Diiys Margaret  
Jones, Lynnette  
Jordi, Peter Russell (Professor)  
Joscelyne, Elizabeth Mary  
Joseph, K  
Joubert, D  
Joubert, Nelius Johan  
Joubert, Steve  
Juhnke, Sieghard Rudiger  
Jurisich, Stephen Craig (Professor)

Kabak, Jack (Dr)  
Kadish, Yael Adira  
Kahn, Kathleen (Professor)  
Kaka, Fatima  
Kanakaruthnam, K  
Kaplan, Lucy Alexandra  
Kara, Aneesia  
Kareem, Yusuf Abiola  
Kasonkola, Kgomotso (Dr)  
Kaye, Janice Bell  
Keating, Lawrence William  
Kedama, Y  
Kee, Brent Patrick Thomas  
Keebine, Modiri Yeberts  
Keizan, Jody Adam  
Kekana, Mamekwa Katlego  
Kelly, L  
Kentridge, Janet Rochelle  
Kentridge, Sydney (Sir)  
Kern, A C  
Kerr, Sean  
Keshwar, Ivan Victor  
Kgatile, Mankgopo  
Kgoarai, Malineo Anastasia  
Kgokong, Belinda Mmabatho (Dr)  
Kgomo, Bhekithemba  
Kahn, Leonard B (Dr)  
Khan, Rabia  
Khasane, Gilbert  
Khoza, Sizakele Lucia Thembekile  
Khumalo, K  
Khumalo, S  
Kienhofer, Frank Werner (Dr)  
Kika, J  
Kinberg, Monica Esther (Dr)  
King, Gilbert (Dr)  
King, R J  
Kingham, Anthony William Andrew (Dr)  
Kirchmann, Paul Jonathan  
Kitchin, Dale J  
Kollenberg, Adrienne Barbara  
Konidaris, George Dimitri  
Koor, Abdul Gafoor  
Kornik, Jonathan  
Kort, Amanda Lisl  
Kotze, Deon Christiaan  
Kramer, Ryan (Dr)  
Kramer, Sidney (Dr)  
Kramers, Jan Dirk (Professor)  
Kruger, Marelize  
Kruger, Steven Kevin  
Kubayi, Rhulani  
Kuhn, Alexandra  
Kulati, Tembile  
Kunene, ZNR  
Kupe, Tawana (Professor)  
Kurgan, Teresa Ann  
Kurth, Heidi  
Kyriazis, Vangelis  
Laas, Joanne Elizabeth  
Lagrange, Robert George (Advocate)  
Lambrechts, Valerie  
Landmann, Alexander Marius (Dr)  
Langa Royds, Nomaliza Beryl  
Lategan, Willie  
Lauf, Sandra Ann  
Law-Viljoen, Bronwyn (Dr)  
Le Roux, Hannah Kellsey  
Legg, Edward William  
Lelliott, Anthony Douglas (Dr)  
Lenferna, S J  
Leuner, Rupert  
Levin, Gerald (Dr)  
Levin, Solomon Elias (Professor)  
Levine, Diane Helen  
Masisi, Priscilla Ikgopoleng  
Levitt, Stephen Phillip (Dr)  
Levy, David (Dr)  
Lewins, Kezia Rose

Lewis, C  
Lewis, Nadine  
Lewis, Sharon  
Libby Family  
Libby, P H  
Liebesman, Jonathan  
Ligaga, Dina Adhiambo (Dr)  
Lill, Allan David  
Limpitlaws, Daniel & Justine  
Linde, Nils Alec  
Lindesay, Christopher John  
Lindie, Mxolisi Nimrod  
Lindop, Graham & Barbara  
Lipschitz, David Arnold (Dr)  
Lipworth, Sydney (Sir) & Lady Lipworth  
Liu, Jichang  
Llale, Josephine Mokokobale Barata  
Lotterman, Brian  
Low, M  
Ludwig, Carsten  
Mabasa, N  
Mabena, Thabo Benjamin  
Mabote, R  
Mabuza, Aubrey Themba  
Mac Hiny, J  
Macgregor, Jane Margaret  
Mackay, Alistair  
Mackenzie, John Low Parter  
Madel, Yalisa  
Madiba, Karabo Leatitia  
Magagula, Mbuyazwe Sebenza  
Magasiner, Norman  
Magidi, Hazel Takalani  
Magoro, B  
Magubane, V  
Magugu, Pumla  
Mahabane, S E W  
Mahanye, Lorraine Dipuo  
Maharaj, Suraksha  
Maher, Peter  
Mahlala, Mamosa (Dr)  
Maine, M  
Makhado, Ginelle  
Makhubele, Rhulani  
Makin, Viola (Professor)  
Makonye, Judah  
Makura, Moky  
Makwela, P O N  
Maleka, Izak Vincent (Advocate)  
Malik, M L U  
Mamkeli, M  
Manga, Pravin (Professor)  
Mangera, Dawood Ismail (Dr)  
Manoim, Irwin Stanley  
Manyake, Kgalele  
Manzana, N C  
Marchant, J M  
Marcus, Gilbert (Advocate)  
Maree, Johann  
Maree, Lukas Marthinus  
Mariano, Gianni  
Mark, Lily  
Mark, Simon Reuben (Dr)  
Markus, Catherine Elizabeth  
Marques, Helder Martinho (Professor)  
Marshal, Jason Paul (Dr)  
Marshall, Vera & Robert  
Martin, Alice  
Martin, David S  
Maseko, Sipho Nkosinathi  
Maseko, S'Onqoba Nonkululeko  
Mashaku, Kabelo Kgoboko  
Mashele, Mzela Justice  
Mashilo, Koena Lucas  
Mashishi, Moses Ramotheo  
Masisi, Priscilla Ikgopoleng  
Maswanganye, Andrew  
Matenche, Refilwe Casper  
Mathebula, A T



Mathen, Paramesan  
Matshedisho, Knowledge Rajohane (Dr)  
Matsho, Lecton Arthur  
Matthews, Mary Susanna  
Maubane, Grace  
Mavhunga, Madlivane (Dr)  
Maxwell, Kennedy William  
Mayer, Eva  
Mayne, David Quin (Professor)  
Maynier, Penelope Armorel (Dr)  
Mazansky, Cyril (Dr)  
Mazansky, Ernest Joseph  
Mazibuko, Faith  
Mazzotti, Analisa  
Mbali, M  
Mbambisa, Bayanda Nothemba (Dr)  
Mbeki, M P M  
Mboya, Nthabeleng  
Mc Mullen, Darryl  
McCallum, Sheila  
McCarter, Roger J (Dr)  
McCarthy, Jarred  
McCormack, Riona Judge  
McEwan, Kieron  
McFarland, Gavin  
McFarland, Luke  
McFarlane, Angus  
McGivern, Colm  
Mcgregor, Roy James  
Mckenzie, Katharine  
Mcnamara, Caryn  
Mdaka, Dezzi Vongani  
Mehlomaku, M  
Mekwa, Odirile  
Mendelowitz, Michael Sydney  
Mendonca, Joao  
Mennell, M  
Mennen, Carmina Margaretha  
Menter, Alan (Dr)  
Meny-Gibert, S R  
Merand, D N  
Meyers, Anthony (Professor)  
Miles, Janet (Dr)  
Miller, Ronald (Associate Professor)  
Miller, T  
Milo, M  
Ming, D  
Minors, Deborah Jess  
Mirels, Hilton (Dr)  
Mistry, Jitishaben  
Mitchell, Jason  
Mitchell, Stephen Ronald  
Mitchley, Mandy  
Mlahleki, Nonhlanhla  
Mncube, Mbali  
Mngomezulu, Treasure Nomgqibelo  
Mngomezulu, Victor (Professor)  
Mnyongani, Freddy Duncan  
Mocwaledi, O  
Modise, G  
Modise, Simon  
Mofoka, N  
Mograbi, P J  
Mohamed, Yumna  
Mohlala, M  
Mohlalole, Nat  
Mojapelo, M  
Moji, Teboho Douglas (Dr)  
Mokgoro, Gerald Boitumelo  
Mokgosi, Refilwe Innocence  
Mokgotsi, Refilwe  
Mokhobo, Kubedi Patrick (Dr)  
Mokoena, T E  
Mokoena, Tefo Petrus  
Mokoena, Thabo Edmund  
Mokotedi, Lentswe  
Mola, M G  
Molefe, Masenyane  
Molefe, Portia Penelope Joy

Molele, Killion Strike  
Molepo, J  
Moletsane, Grace Mapaseka  
Moll, Ian Charles (Associate Professor)  
Moller, Manfred Helmut (Professor)  
Moloto, Hamilton Ntu  
Moloto, Nicodemus Machete  
Momoniat, Ebrahim (Professor)  
Monare, Lisema  
Monene, Isabella Mmatlala  
Monk, Jean Ann  
Moodley, Selvarani  
Moolla, Mahomed (Dr)  
Moore, Robin Stanley (Professor)  
Moosa, Akhter  
Moremi, David Kgositang  
Moreton, Christopher Neil  
Morgan, Brian K  
Moriarty, Michael Sean  
Morojele, Mphethi  
Moross, Trevor  
Morris, Dave & Precila  
Morrow, B A  
Moseneke, Dikgang (Justice)  
Moseneke, Koketso  
Moseneke, Tiego  
Motala, Ismail (Dr)  
Motheogane, Millicent  
Mothoagae, Gaolatlhe  
Motingoa, A X  
Motloba, Modise  
Motloba, Zingisa  
Moultrie, R  
Mowatt, Grant  
Mowatt, Rigel  
Msimang, Nandi  
Msimanga, Audrey (Dr)  
Mthembu, Mphiliseni  
Mthenjane, Mzila Isaac  
Mtoba, Vuyo  
Mudau, Maria  
Mugivi, E  
Mujaji, Marjorie (Dr)  
Mukaddam, Fatima  
Mukoki, Paul  
Munian, Leann Prabashnee (Dr)  
Munshi, Abdulhay (Dr)  
Murray, Bruce Keir (Professor)  
Murray, Lynda Jane  
Murray, Tessa  
Murton, Vivian Marshall  
Musa, M S H  
Musahale, F  
Musakale, Franklin Buana  
Mushayikwa, Emmanuel  
Myburgh, Albert Jacobus  
Myeni, Sifiso Christopher  
Myezwa, Hellen (Dr)  
Naicker, Prisha  
Naidoo, Dhiren  
Naidoo, G S  
Naidoo, Gonaseelan (Dr)  
Naidoo, Kreasen  
Naidoo, Kreeya Leeshay  
Naidoo, Leigh-Ann  
Naidoo, R  
Naidoo, Thoneshan  
Nana, Jayesh  
Nana, Mitani Raman Keshav  
Nana, Mohamed Faez  
Nash, J  
Nathan, David Alan  
Nathan, Leon (Dr)  
Nathan, Shirley Adele (Advocate)  
Nathanson, Saul David (Dr)  
Ndala, K B  
Ndebele, Misheck (Dr)  
Ndiwalana, Alexandra Solome  
Ndlovu, H H

Ndlovu, Nokulunga Sithabile  
Ndonga, Nontsundu  
Ndzimbomvu, T M  
Neale, Brian  
Nebe, Warren Alan  
Nell, Barbara Joan  
Nene, Louise Nommiselo  
Nesbitt, Evelyn Maria  
Nettleton, Anitra Catherine (Professor)  
Neuling, Bruce  
Newmarch, J M  
Newstadt, Mark (Dr)  
Ngcob, S G  
Ngobeni, B P (Dr)  
Ngobeni, Harold  
Ngobese, C V  
Ngwenya, A  
Ngwenya, G M  
Ngwenya, Sharol Philile (Dr)  
Ngwenya, Sizakele (Dr)  
Nhlapo, Mduduzi  
Nichha, Roopen Manherlal  
Nicol, Kevin Christopher  
Nicol, Sally Anne  
Nicol, Yvette  
Nicolaou, Nicolas (Dr)  
Nkado, Raymond Nnaemeka (Professor)  
Nkambule, Thandiwe  
Nkhumeleni, Mpho  
Nkosi, P  
Nkwana, Makwe  
Noble, Patrick  
Nontongo, Tshepo  
Norval, K  
Nowlan, John William (Dr)  
Ntuli, M  
Nudelman, Sam & Jill  
Nxasana, Sizwe Errol  
Nyembe, Nomonde  
Nyovane, Balevi  
Nzimande, L  
Ogude, James Adera (Professor)  
Ojwang, Dan Odhiambo (Dr)  
Oldert, N  
Olivier, Frans  
Olwage, Grant Etienne (Dr)  
Omar, Rihaan  
Orlek, Barry (Dr)  
Orwin, Derek  
Osman, Ruksana (Professor)  
Owo, Ikwa (Dr)  
Oyedele, Akinoluwa  
Paahla, Ryan Nataniel Noach  
Pantanowitz, Adam  
Pantanowitz, Desmond (Professor)  
Papo, Anthony Hope  
Parker, Sharon  
Parker, Walter Blakeney  
Parrini, Francesca (Dr)  
Parshotam, Atish Ashok  
Partridge, Lincoln John  
Patel, A I  
Patel, Imraan Ebrahim  
Patel, Nilesh-Kumar (Dr)  
Patel, Shirona  
Patel, Soraya  
Paterson, Yolanda Elizabeth  
Patten, John Michael  
Payne, Beatrix Mary  
Payne, Lynn  
Pedra, Christopher  
Pegram, Theodore Henry Christian  
Peiser, Milton Roy  
Pelser, Charmaine Louise  
Penn-Kekana, Loveday  
Penrose, B  
Pereira, Laura Maureen  
Persona, Riccardo Marco  
Perumal, Alicia Nicole

Petersen, Cindy Ruth  
Phakeng, Mamokgethi (Professor)  
Phala, T S  
Phasha, Mahlako  
Phili, M M  
Philippou, Helen  
Phiri, Jeannette  
Pick, William (Professor)  
Pierce, Kerry  
Pilcher, Richard Mark  
Pillay, Kubandiran  
Pillay, N  
Pitman, Michael Mark (Dr)  
Pitt, Justin  
Platt, Frederick Cornelius  
Plaut, Martin  
Pollen, Jeffrey J (Dr)  
Pope, Noel Cuthbert (Dr)  
Popescu, Max  
Porteous, Paul Henry (Dr)  
Possa, T  
Pouroullis, Savvas  
Powrie, Leslie Ward  
Predecki, Pawel Paul  
Price, Harold Edwin  
Price, Max Rodney (Professor)  
Purshotam, Ranjit Jamnandas  
Quandt, A  
Quirk, J  
Radebe, S  
Rajah, Rashid (Dr)  
Rajoo, Thanasha  
Raju, Deon  
Rallis, Lucy  
Ram, Asheer  
Ram, Sameer Jywant  
Rama, T  
Ramakgapola, Rosemary  
Ramalitse, Sello Vincent (Dr)  
Ramesar, Khunal  
Ramirez, David  
Ramokgopa, Tsekere Solomon (Dr)  
Ramuk, O  
Ranchod, Ditesh Vassan  
Ranchod, Natvarlal  
Ranchod, Pravesh  
Randell, John Nowell  
Randell, Moira Gail  
Raphaely, Mark  
Ratlhagane, A  
Ratshikhopha, N  
Redfern, A & M  
Reekie, Amanda Jane  
Reichenberger, J  
Reichman, Alan J (Dr)  
Reid, Cynthia (Dr)  
Reid, Graeme Charles  
Reinecke, Daniel Theodore  
Rembach, Lauren Ann  
Rennie, Alice Belinda  
Rennie, Ann Theresa  
Rex, Grant George (Dr)  
Richards, G  
Richardson, Graham Vincent Copeland  
Richardson, Warren Gareth  
Rigby, David Ian  
Riskowitz, Sean  
Rispel, Laetitia Charmaine (Professor)  
Ritchken, Davne Aeliana  
Robertson, Ronella  
Robinson, Ian Connell  
Rocchi, Donovan  
Rocha, Sergio & Ana  
Rodseth, Richard Charles  
Rogers, Katherine  
Rollnick, Beulah  
Rollnick, Marissa Susan (Professor)  
Root, David (Professor)  
Rose, G S

Rosen, Brian  
Rosen, Lewis (Advocate)  
Rosenberg, Roger Martin (Dr)  
Rossouw, P J  
Roux, Paul John  
Rowji, Pradeep (Dr)  
Royal, Robert Malcolm  
Rule, Matthew  
Rusznayak, Leanne (Dr)  
Rwigema, Kirenga  
Rynberg, Diana Stephanie  
Sabela, N A  
Safier, Ruth (Dr)  
Saks, G  
Salt, Richard Norman  
Samsodien, Ismael  
Sanderson, Karren  
Sanneh, Sandra  
Sathekge, Hazel  
Saunders, Sandra Kaye  
Savvas, Andrew  
Scheckter, David (Dr)  
Scheepers, N  
Scheurenberg, Ronald Joe  
Schewitz, Michael Alan  
Schnaid, Caron  
Schneider, Adele (Dr)  
Schneider, Kerri-Lee  
Schneier, Steffen Graham  
Schorn, Mark  
Scott, Christine Deborah Clare  
Scott, Michon  
Scott-Brown, Denise (Dr)  
Seale, Oliver  
Seboni, Ayanda Nokukhanya  
Sechele, D H  
Seedat, S  
Seedat, Y  
Seedat, Yazeed Aboobaker (Dr)  
Sehloho, T  
Seid, Allan Basil (Dr)  
Seithamo, Benji  
Sekwele, Molefe  
Selati, Sydney  
Selfe, Gavin Robert  
Serafini, Aldo Nicola (Professor)  
Seya, S  
Shackleton, Mireille Ninon Sylvia  
Shackleton, Mitchell (Professor)  
Shaikjee, M  
Shalem, Yael Tova (Professor)  
Shar, Sadick  
Shardelow, Maria Magdalena  
Sharp, Diana Gillian  
Shayingca, Thandaza Mitchel (Dr)  
Shea, GE  
Sheiham, Helena (Dr) & Aubrey (Professor)  
Sher, Jason & Gabriella Michele  
Sherman, Gayle Gillian (Dr)  
Shongwe, Rob  
Sibiya, N  
Sibiya, Silindile Fortunate  
Sibotshiwe, Thando  
Sieff, Grant Benjamin (Dr)  
Sihlongonyane, Mfaniseni Fana  
Silcock-Herholdt, Anette  
Silver, Justin (Professor)  
Silverman, Norman H (Dr)  
Simao, Francisco  
Simson, Ian Wark (Professor)  
Singer, L  
Sisilana, Lwandile  
Sithole, Joslyn  
Sithole, Khayelihi  
Sithole, L  
Sithole, M  
Skews, Beric William (Professor)  
Skinner, David Hugh Hamilton  
Skosana, Musi Thabang

Slater, Sanchia Harland  
Slim, James  
Small, Michelle Rene  
Smith, James Rob (Professor)  
Smith, Stanis Ion Rexford  
Smyth, A  
Snaddon, Jill Rosemary  
Snaddon, Susan Marion  
Solomon, Galla Phyllis Jean  
Soni, Sarisha  
Soni, Yatish  
Soskolne, Colin Lionel (Professor)  
Soskolne, Errol I (Dr)  
Spence, L V  
Spencer, Charles Peter  
Spiropoulos, L N P  
Spitz, Derek Bryan  
Spitz, Margaret Ruth (Dr)  
Stacey, Simon Paul (Dr)  
Stadlen, N F (Sir)  
Stander, Beulah  
Stander, Rupert  
Stathoulis, Basil (Dr)  
Stead, S L  
Stein, Evan Albert (Dr)  
Stein, Gillian M  
Stein, Shanee  
Steinberg, Carola  
Stephenson, Christopher Guy (Dr)  
Stevens, Catherine N  
Steyn, Carolyn  
Steyn, E S  
Still, Carol Susan  
Still, Jennifer  
Stipp, Emile  
Stirk, Virginia Maria  
Stocken, Phillip C  
Stone, Stuart  
Storbeck, Edward James (Dr)  
Stott, Lisa  
Streak, Milton  
Stremlau, John Julius (Professor)  
Strydom, C E  
Stuhler, Barry Lester  
Subel, Arnold (Advocate)  
Sukha, Bharati Nagin  
Suleman, Zeenat  
Suliman, S  
Swana, Marshall Mthetho Mncedisi  
Sweet, Alison  
Taigbenu, Awore Tolulope Akpofure  
Takacs, Balazs David  
Tandy, Cameron Peter  
Taylor, Paul Francis  
Teeger, John Lonsdale  
Thakurdin, Varsha K  
Theo, Joshua  
Theron, E  
Thokoane, Basetsana  
Thom, Rita (Professor)  
Thomas, Ralph Warren  
Thompson, Green  
Thurman, Christopher James (Dr)  
Thurman, Graham Eric  
Thwa, M  
Tippett, Tanja  
Tladi, Thapelo  
Tihabi, Penny (Dr)  
Tlhogane, Tshepo  
Tlou, P  
Todes, Alison Elaine (Professor)  
Todes, Joseph Victor (Dr)  
Tollman, Stephen Meir (Professor)  
Townsend, Gwen  
Trachtenberg, Aaron  
Tradonsky, R  
Trangos, Guy Jano  
Tranld, Sid  
Tregrove, Estelle (Dr)



Tromp, Brett Clinton  
Tsharane, Karabo  
Tsipane, Lawrence Tshwaro  
Tsunke, Rechelle  
Turner, Jillian Merle  
Turton, Ingrid  
Tutu, Hlanganani (Dr)  
Twala, Lawrence  
Twine, Wayne Chilton  
Tziatas, John  
Underhay, Dylan Thomas  
Unterhalter, D N  
Urbain, Charles M  
Uzoegbo, Herbert (Professor)  
Valiallah, R  
Vallabh, Rajen Magan  
van den Bosch, Bruce Eelco  
van der Haar, G D  
van der Linde, W H G  
van der Merwe, Doreothea (Dr)  
van der Merwe, Nell  
van der Riet, R M  
van der Spuy, Mandie  
van der Zwan, Arie  
van der Zwan, V G  
van Esch, Sandra Dawn (Professor)  
van Heerden, E M J  
van Tzefde, J A  
van Wyk, Tasneen  
van Zyl, S  
Vanek, Monique Maria  
Varughese, Sheeba (Dr)  
Vawda, T  
Veale, Hilary  
Vearey, J L (Dr)  
Vearey, M E  
Venkatakrisnan, Srinivasan  
Venketiah, Ellain  
Venter, E S  
Vergunst, Francis  
Victor, Margaret (Hon Justice)  
Vilakazi, Linda  
Viljoen, Morris James (Professor)  
Visser, A  
Vladislavich, Ivan Joseph  
von Gottberg, Bernd Johannes  
Vosloo, Rene  
Wadia, Safiyyah  
Walker, J D L  
Walton, Elizabeth Lockhart  
Ward, Susan  
Warner, Kevin Hardwick  
Watermeyer, Peter  
Watkinson, Annah  
Watt-Pringle, C E  
Weakley, Dylan Jon  
Webb, Susan Jane (Dr)  
Webber, E  
Weisz, Lynn  
Westergaard, Chris  
Weston, M  
Whate, Fabian  
Whitaker, M L  
White, Hylton (Dr)  
Whitehead, Kevin (Professor)  
Whittaker, Gregory Angus  
Whittaker, L  
Wilcocks, Julia Ruth Nadene  
Williams, Abeda  
Williams, Merle Avril (Professor)  
Williams, Michelle Annette (Dr)  
Williams, Paul Graham (Dr)  
Williams, Philip Richard  
Williams, Rejane  
Williamson, Amanda Kirsty  
Wilma, N  
Wilson, Alan John  
Wilson, Chantal  
Wilson, Gail

Wilson, Jerome (Advocate)  
Wilson, John W  
Wise, Stephen  
Wood, J C  
Wood, Janet  
Woods, Ian Caley  
Worby, Eric William (Professor)  
Wypkema, Emma Mary (Dr)  
Yannoulas, B G  
Yawitch, Boris  
Yisa, Adanma  
Yudaken, Israel Reuben (Dr)  
Zambakides, Christos Andrew (Dr)  
Zejlstra, I E  
Zille, Helen Otta  
Zitha, T R  
Zoghby, Ramon  
Zulu, Guguletho  
Zulu, N  
Zuma, Buhle Nontokoza  
Zvandikona, A C  
Zwane, Phumelele

ARTWORK DONORS TO WAM

Bass, Pam  
Breitz, Candice  
Cohen, Lesley  
Douglas, Lynette  
Elahi, Alice  
Fourthwall Books  
Freemantle, Barbara  
Ginsberg, Jack  
Givon, Linda  
Goodman Gallery  
Knight, Natalie  
Louw, Ulrich Estate (Bequest)  
Prebatsch, Suzanne  
Read, Trent  
Reid, Silke  
Rubens, Tony  
Sellschop, Sue  
Waterman, Jill

CORPORATES

G.H. Group  
Givengain  
Goldman Sachs International  
SITA Information Networking Computing UK  
True Blue Inclusion  
Virgin Money Giving  
Abbott Laboratories (SA)  
ABSA Bank  
Actom  
AECI  
Airbus DS Optronics  
Alstom Power Services  
Alstom South & East Africa  
Anglo American Corporation of SA  
AngloGold Ashanti  
Aspen Pharmacare  
BAM Events & Experience Creators  
Bentel Associates International  
Bhelwato Engineers & Associates  
Bidvest Group  
BME, a division of Omnia Group  
Boehringer Ingelheim  
Boston Scientific  
British American Tobacco South Africa  
Buffet Investment Services  
Caltex North West Marketer  
Camry Trading Enterprises  
CAPCO  
Caracle Creek International Consulting  
Caxton & CTP  
CBI-electric Low Voltage  
CGG South Africa  
Chryso SA  
Cisco  
Constitution Fund

Coralynne & Associates  
Creamer Media SA  
Credit Guarantee Insurance Corporation of Africa  
DataCentrix  
Dickys Cakes  
Discovery Health  
Dot Slash  
Drs Adam & Owen Norsworthy  
Ebosy Properties  
Electronic Media Network  
Employ and Empower Deaf  
Encha Group  
Enviroserv Waste Management  
Erins Optometrists  
Flexible Accident & Sickness Acceptances  
Fluor SA  
Fresenius Medical Care South Africa  
Fuchs Southern Africa  
General Electric South Africa  
Google South Africa  
Honeywell  
IBM South Africa  
International Housing Solutions  
Investec Bank  
John Deere  
Johnson & Johnson Medical  
Joy Global Africa  
Julia Twigg  
KMJ Services  
Koolcon Construction  
L L Woznica  
Lafarge Industries South Africa  
LanteOTC  
Legal Aid Board  
Liberty Group  
Maropeng a’ Afrika Leisure  
Maseve Investments 11  
Massmart  
Medicacom  
MediClinic Southern Africa  
MF Jassat Dhlamini Incorporated  
Microsoft  
Midrand Real Estate  
Mikam Investments  
Mitsubishi Corporation  
MME Media  
MMI Group  
MTN SA  
Murray & Roberts Holdings  
Natalie Knight Productions  
NEC Africa  
Nedbank  
Norton Inc  
Norton Rose Fulbright SA  
Old Mutual Life Assurance Company South Africa  
Olives & Plates  
P K Kgomo Projects  
Peregrine Equities  
PricewaterhouseCoopers SA  
Purolite  
Red Dog Scientific Services  
Rensh Trading  
Rosella  
SA Airlink  
Sail Rights Commercialisation  
Saleys Agencies  
Sasfin Bank  
Scarlet Ibis Investment  
Sekhukhune & Associates  
Sentech  
Shell Downstream South Africa  
Sibanye  
Kumba Iron Ore LTD  
Sivantos Group  
Skye Lab  
South Point Management Services  
Squinch Advisory Services

Stalker Hutchinson Admiral  
Standard Bank Gallery  
Standard Bank of South Africa  
Strauss & Company  
Student Village  
Take a Child to School  
Takeda  
Tanc Utility Wear  
Tata Automobile Corporation (SA)  
Telkom SA  
Tenova Mining and Minerals  
Teraco  
The Everard Read Gallery  
The Goodman Gallery  
Trinitas Private Equity  
UCS Solutions  
Unilever SA  
Webber Wentzel Attorneys  
WIKA Instruments  
Winton Capital  
XBT Corporate Services of South Africa

CORPORATE TRUSTS AND FOUNDATIONS

ABB Educational Trust  
Anglo American Chairman’s Fund Educational Trust  
BATSA Signature Trust  
BPSA Education Foundation  
Discovery Foundation  
Exxaro Chairman’s Fund  
FirstRand Foundation  
FirstRand Foundation - FNB Fund  
FirstRand Foundation - Rand Merchant Bank Fund  
Fluor Development Trust  
Hatch Black Women’s Education Trust  
Investec Entrepreneurship Development Trust  
Link-SA Trust  
Motorola Solutions Foundation  
Nedbank Eyethu Community Trust  
Russell Mineral Equipment South Africa  
Empowerment Trust

INTERNATIONAL PHILANTHROPIC FOUNDATIONS AND TRUSTS

Alistair Berkley Charitable Trust  
Andrew W Mellon Foundation  
Bertha Foundation  
Canon Collins Educational & Legal Assistance Trust  
Carnegie Corporation of New York  
Childwick Trust  
Colin Winter Centre for Namibia  
EGG Foundation  
Ford Foundation  
Foundation for Enhancing Communities  
Grassvalley Trust  
Howard Hughes Medical Institute  
Institute for Advanced Studies - Science Initiative Group  
JP Morgan Chase Foundation  
Julian Baring Scholarship Fund  
Kresge Foundation  
Mahomed Patel & Christine Phillips  
Mary Oppenheimer & Daughters Foundation  
Moshal Foundation  
Open Society Foundation - New York  
The Beit Trust  
The Joffe Charitable Trust  
The Julian Baring Scholarship Fund  
Wenner-Gren Foundation for Anthropological Research Inc

SOUTH AFRICAN PHILANTHROPIC FOUNDATIONS AND TRUSTS

A Goldsmith Trust  
A T Williams Trust  
Albert Wessels Trust

Alexandre Lorant Charitable & Educational Trust  
Alwyn Zoutendyk Scholarship Trust  
Anthony Sampson Foundation  
ApexHI Charitable Trust  
Apollo Music Trust  
Bradlow Foundation  
Carl & Emily Fuchs Foundation  
CJ Petrow Foundation  
DG Murray Trust  
Doit4Charity  
Donald Gordon Foundation  
E M Papenfus Trust  
Edgar Droste Trust  
ELMA Philanthropies Services (Africa)  
Eve Anderson Charitable Trust  
G H Langelier Trust  
Gerald Sekoto Foundation  
Gillink Trust  
Ginger Hilda Spiegel Trust  
H E Joosub Charitable Trust  
Hatch Black Women’s Education Trust  
Hear Always Foundation Trust  
Hermann Ohlthaver Trust  
Hillel Friedland Trust  
J M Hansen Scholarship Trust  
JC Bitcon Foundation  
John Bell Educational Trust  
John Davidson Educational Trust  
K Hastie Trust  
Koor Dindar Foundation  
Lee R. Berger Foundation for Exploration  
Link-SA Trust  
MacKenzie Foundation  
Melville Inglis Family Charitable Trust  
Minerals Education Trust Fund  
Mones Michaels Trust  
Motsepe Foundation  
National Lottery Distribution Trust Fund  
New Settlers Foundation  
Nicarella Charity  
Open Society Foundation for South Africa  
Oppenheimer Memorial Trust  
Osman Family Trust  
Phil Harber Jazz Trust  
PM Anderson Educational Trust  
Raith Foundation  
Ruby Mary Reeves Will Trust  
Simmonds Hampton Trust  
Skye Foundation  
SA National Zakah Fund  
South African Zionist Federation Trust  
Southern Africa Trust  
Susman Charitable Foundation  
Suttner Family Trust  
T R Hindson Trust  
The Claude Leon Foundation  
The Keizan Charitable Trust  
Tweet Tweet Trust  
Valley Trust  
Vorajee Family Trust  
Wilfred Cooper Trust  
Yellowwoods Social Investments NPC

NGOs & PBOs

American Council of Learned Societies  
Hivos  
My School Woolworths Project  
National Geographic Society  
New Venture Fund  
Academic Staff Association of Wits University  
Alberton Retirement Village  
Atlantis Swimming Club  
Business and Arts South Africa  
Business Leadership South Africa  
De La Salle Holy Cross College  
Goethe-Institut Johannesburg  
Payfast/702/Old Mutual/SRC Campaign  
Roseneath Quilters

Rotary Club - Rosebank  
SA Institute of International Affairs  
South African Association of Women Graduates  
South African Journal on Human Rights  
The Council of Education Witwatersrand  
The South African Society of Otorhinolaryngology Head & Neck Surgery  
United Nations Children’s Fund  
Universities South Africa  
WMO African Chapter

STATE-OWNED ENTERPRISES

Airports Company South Africa (ACSA)  
Eskom  
Industrial Development Corporation of South Africa  
SARS  
SASRIA Soc Ltd  
South African National Roads Agency  
Technology Innovation Agency  
Transnet

SECTOR EDUCATION AND TRAINING AUTHORITIES (SETAs)

Banking Sector Education and Training Authority (BANKSETA)  
Chemical Industries Education and Training Authority (CHIETA)  
Culture, Arts, Tourism, Hospitality and Sports Sector Education and Training Authority (CATHSSETA)  
Education, Training and Development Practices (ETDPSETA)  
Finance and Accounting Services Sector Education and Training Authority (FASSET)  
Health and Welfare Sector Education and Training Authority (HwSETA)  
Insurance Sector Education and Training Authority (INSETA)  
Manufacturing Engineering and Related Services (MERSETA)  
Media Information & Communications Technologies Sector Education & Training Authority (MICT)  
Mining Qualifications Authority (MQA)  
Transport Education and Training Authority (TETA)

GOVERNMENT DEPARTMENTS AND MUNICIPALITIES

City of Johannesburg Support Services  
Department of Science and Technology  
Gauteng Department of Health  
Gauteng e-Government  
National Arts Council  
National Department of Health  
Western Cape Department of Social Development

UNIVERSITIES

Center for International Law  
Justus-Liebig-University  
University of Dar es Salaam  
University of Paris  
University of Pennsylvania  
University of Ryerson  
Cape Peninsula University of Technology  
University of KwaZulu Natal  
Wits Health Consortium (Pty) Ltd

INTERNATIONAL GOVERNMENTS AND AGENCIES

Deutscher Akademischer Austausch Dienst  
European Union  
Helsingborgs Stad  
Swiss Development Corporation (SDC)



## Wits Foundation

The University of the Witwatersrand Foundation was established by a Deed of Trust in 1978 as a registered Public Benefit Organisation (PBO) to collect and manage donations for the benefit of the University. A Board of Governors and Trustees appointed by the University Council manage the Wits Foundation, which is recognised as a PBO in terms of Section 30 of the Income Tax Act No 58 of 1962, as amended, and operates exclusively for charitable and educational purposes.

All donations to the Wits Foundation are tax deductible in accordance with Act 58 of 1962.  
Tax certificates are issued in accordance with the legislation for all donations received.

### GOVERNORS AND TRUSTEES

Chairman: David Brink (Director, Steinhoff)	Suliman Mahomed (Chairman and CEO, The Solly's Group)
Mike Bashe (MD, Eskom Finance)	Bonang Mohale (Chairman, Shell South Africa)
Arnold Basserabie (Strategic Business Consultant)	Christine Ramon (CFO, Anglo Gold Ashanti)
Adrian Gore (CEO, Discovery Holdings)	Alan Romanis (Director of Companies)
Professor Adam Habib (Vice-Chancellor and Principal)	Tokyo Sexwale (Non-Executive Chair, Mvelaphanda Holdings)
Brian Joffe (CEO, Bidvest Group)	Isaac Shongwe (Chairman, Letsema Holdings)
Professor Tawana Kupe (Deputy Vice-Chancellor)	Professor Bruce Sparks (Former Head: Department of Family Medicine)
Dr Theunis Lategan (Deputy Chairman, Barclays Africa Corporate)	Advocate Anthony Stein (Johannesburg Bar)
Professor Jonathan Klaaren (WISER)	

## The University of the Witwatersrand Fund, Inc. (USA)

The University of the Witwatersrand Fund, Inc., is an independent, non-profit corporation chartered under the laws of New York State, and recognised by the U.S. Internal Revenue Service as a 501(c)(3) tax-exempt corporation. In compliance with the IRS regulations, the Board of Directors of Wits Fund maintains complete discretion over allocation of donations to Wits University. Donations to Wits Fund qualify for income tax deductions in the United States to the limits covered by the law.

### BOARD OF DIRECTORS

Chairman: Stanley M. Bergman (Chairman and CEO, Henry Schein, Inc.)	Bruce A. Hubbard (Principal, Bruce A. Hubbard P.C.)
Vice Chairman: David Schneider (Retired executive, Coca-Cola)	Jane Levy (Angel investor)
President: John Teeger (President, Founders Equity)	Clifford McMillan (Principal, ARUP)
John Chalsty (Founder and Chairman of Muirfield Capital Management, LLC)	Dr Teboho Moja (Professor of Higher Education at New York University)

## Wits Foundation UK

The Wits Foundation UK is a charitable organisation for the advancement of education, in particular at the University of the Witwatersrand in South Africa. The Foundation is able to reclaim tax on the donations of UK-resident taxpayers provided Gift Aid requirements are met, and higher-rate UK taxpayers may reclaim tax of their own via their annual UK tax returns.

### PATRON AND TRUSTEES

Patron: Sir Sydney Kentridge QC	Professor Sir David King (Special Representative for Climate Change for the UK Government)
Chairman: William Frankel OBE	Professor Adam Habib (Wits Vice-Chancellor and Principal)
Trustees: Professor Colin Bundy (Former Wits Vice-Chancellor)	

#### Registration Details:

Charity Registration Number 1087539  
Company Incorporation Number 04217424

Conceptualised and produced by the Wits Development and Fundraising Office  
Writer & Editor Heather Dugmore | Designer Nicole Sterling