

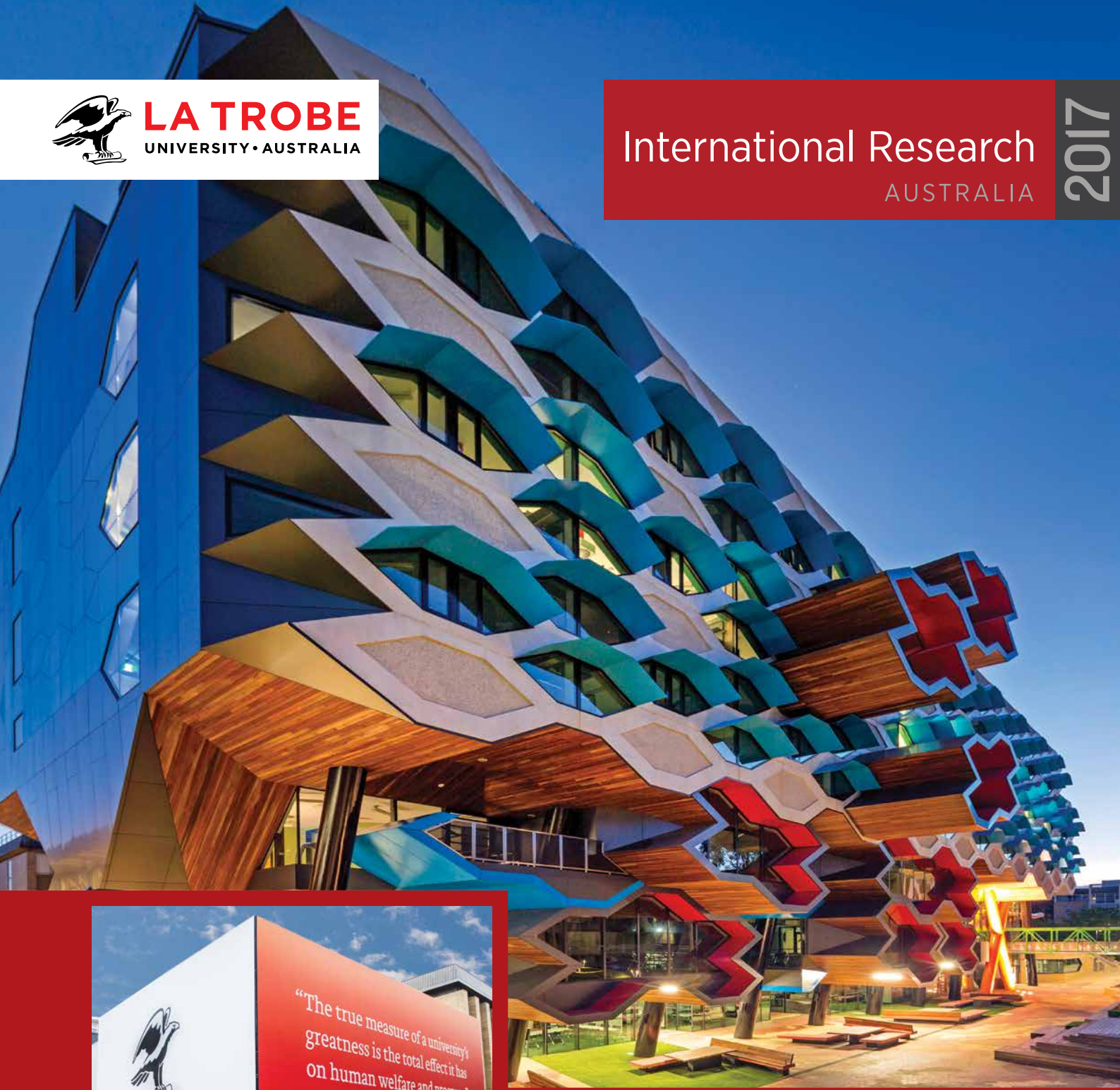


LA TROBE
UNIVERSITY • AUSTRALIA

International Research

AUSTRALIA

2017



A very warm welcome

When you come to La Trobe, you will be joining a leading research institution ranked in the top 350 of global universities in the 2016 Academic Ranking of World Universities. We are a university known for our modern, vibrant research culture – one that values academic freedom, attracts and retains exceptional staff and students, cuts across traditional disciplinary boundaries to address global issues, and fosters the very best research.

Our five cross-cutting Research Focus Areas build on our established strengths and our world-class infrastructure to address some of the most pressing global issues of our time: securing food, water and the environment; sport, exercise and rehabilitation; understanding disease; building healthy communities; and transforming human societies.

This International Research Guide provides you with an introduction to our research facilities and the academic support that is available to you at La Trobe. This includes the Research Education and Development (RED) unit, which supports researcher capacity building and provides a range of professional development opportunities, including career development skills for industry engagement and entrepreneurship, media training, and critical thinking.

Our Graduate Research School will support you through your studies, and connects graduate researchers with industry mentors to provide valuable work experience, giving you the greatest chance of employment following completion of your studies.

Thank you for choosing La Trobe University.



Professor Keith Nugent
Deputy Vice Chancellor (Research)

Contents

About La Trobe / **2**

Explore La Trobe / **4**

Our research areas / **6**

The right research degree for you / **8**

Find a supervisor / **9**

Get the right support / **10**

Our research facilities / **12**

2017 research degrees / **14**

Fees and scholarships / **18**

How to apply / **19**

Research highlights / **20**

Front cover

La Trobe Institute for Molecular Science (*main image*)

LIMS has in-house facilities for bioinformatics, flow cytometry, microscopy, genomics, nuclear magnetic resonance (NMR), and mass spectrometry. It additionally houses inductively coupled plasma (ICP) equipment, atomic absorption spectrometer (AAS), X-Ray diffractometer, crystallography, and laser research.

David Myers (*left image*)

Founding Vice-Chancellor of La Trobe University. Each year the University offers the highest University-ranked applicants for a postgraduate research scholarship in each College the David Myers Research Scholarship. Find out more: latrobe.edu.au/research/future/costs-scholarships/named-scholarships

Library Facilities (*right image*)

Our library spaces are lively, engaging, informal places and a place for our researches to discover, collaborate and connect, with workshop, data visualisation and presentation opportunities.

Left to right: Katherine Arditto (Australia) Dang Manh Dao (Vietnam), Tu Thanh Tran (Vietnam), Mara Pho (Cambodia)

About La Trobe

Since opening our doors in 1967, we've built a reputation for combining academic excellence with an enduring social conscience. By choosing La Trobe, you're choosing to get real-world experience, gain a global perspective and study alongside people who are pushing the boundaries of knowledge.

More than
36 000

students study with us, including over 8 000 international students from 110 countries.

La Trobe University has achieved its

**highest ever
academic
ranking
of world
universities**

making us one of the most improved universities in Australia.*

In the 2015 Excellence in Research for Australia Report, La Trobe University was one of only three Victorian universities that achieved

**well above
world
standard**

based on 19 fields of research.

We've invested more than

**A\$500
million**

into world-class centres for learning and research, including the La Trobe Institute for Molecular Science (LIMS) and the Centre for AgriBioscience (AgriBio).

The 2015 Excellence in Research for Australia Report placed us as one of Australia's only two universities

for research

that achieved above or well above world standard as rated for seven different fields of research in Biological Sciences.

The wedge-tailed eagle (*Aquila audax*) is one of the world's largest. For the Wurundjeri People, traditional owners of the land where our Melbourne Campus is located, the wedge-tailed eagle is known as Bunjil. The eagle gives guidance to those in need.

'Whenever there's a fearsome time, or a time of doubt, or you're not sure of which way to go or what you should do, most times an eagle will feature.'

– Aunty Joy Murphy Wandin,
Senior Elder of the Wurundjeri People.

The eagle represents knowledge, wisdom and leadership. You can see one of these majestic animals at Healesville sanctuary or around the You Yangs in Victoria.

La Trobe University is ranked in the

top 400

by all three major ranking agencies: the QS, the Times Higher Education and the ARWU.

* Source: Academic Ranking of World Universities 2016 (shanghairanking.com)



Explore La Trobe

La Trobe was founded on the belief that a university should be useful to the communities it serves. We are proud to have been one of Australia's pioneering universities for nearly 50 years.

A La Trobe degree is more than just a piece of paper – it's the mark of someone with the skills and experience to make a difference and tackle the big issues of our time.



About La Trobe

We're named after

Charles La Trobe,

the first Superintendent of the Port Phillip District from 1839 to 1850, and the first Lieutenant-Governor of the new colony of Victoria from 1851 to 1854.

We were the

third university

to open in Victoria.

We have over

1700

graduate research students.

In 2017 we celebrate our

50th anniversary.

Research

La Trobe has researchers working in

45 specific disciplines

where Excellence in Research for Australia ranked us at or above world standard.

In the 2016 Academic Ranking of World Universities (ARWU) La Trobe was ranked in the

top 350 of global universities

Flagship facilities

We've invested more than

A\$500 million

in new world-class centres of learning and research, including:

- the A\$288 million Centre for Agribioscience (AgriBio), a world-class facility for agricultural biosciences research and development
- the A\$94 million La Trobe Institute for Molecular Science (LIMS) research centre, accommodating more than 400 researchers
- La Trobe's Wildlife Sanctuary on the Melbourne Campus, boasting numerous indigenous plants and animals from kangaroos to emus.

In the 2015 Excellence in Research for Australia Report, La Trobe was the only Australian university rated 'well above world standard' in three separate fields for

agricultural and veterinary sciences research.

Graduates

170 000+ students

have graduated from La Trobe.

We enable students to

build the skills

that attract the best employers.

Graduates include

CEOs of some of Australia's most prominent organisations, as well as parliamentarians, human rights activists, medical researchers and Olympians.

Our research excellence

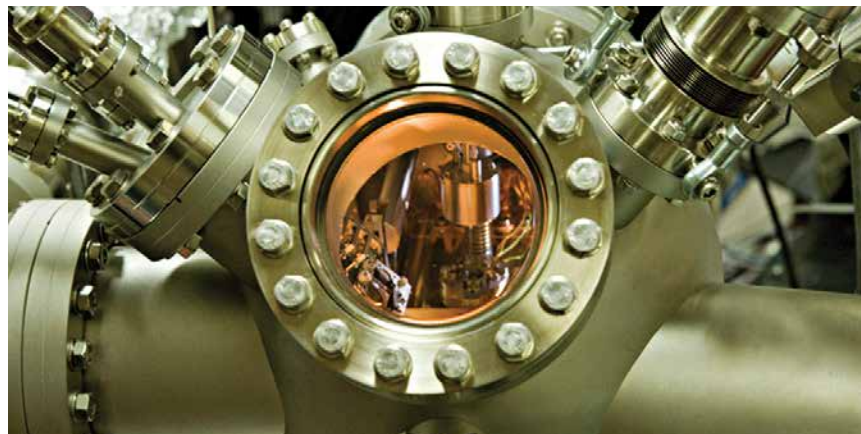
At La Trobe, we are globally recognised for our excellence, creativity and innovation in taking on the big issues of our time. Research excellence is one of our main strengths, and we excel in our chosen areas of research focus.

What can I research?

After you commence your candidature, you can choose to research in a broad range of areas, including our five Research Focus Areas (RFAs) that address some of the most important questions facing human societies and the environment.

In addition to our RFAs, we have six Disciplinary Research Programs (DRPs), and a range of specialist Research Centres.

Find out more:
latrobe.edu.au/research



Research Focus Areas (RFAs)

Sport, exercise and rehabilitation

Our research into human movement and sport science is renowned and we have some of the world's best researchers in exercise physiology, physiotherapy, nutrition, sports medicine and sport management.

We use sport, exercise and rehabilitation to improve overall health, reduce the burden of disease, improve the performance of elite athletes and enable more Australians to live longer and stronger.

Building healthy communities

We focus on research that improves access to high-quality services and tackles challenges such as the ageing population, chronic disease and mental health issues. We have an international reputation for our research on health and wellbeing.

Securing food, water and the environment

Urgent action is required to secure our future on a planet that is facing enormous pressure. We're using our world-class facilities and expertise in agricultural biotechnology, ecological science and water policy to protect primary producers and resources, while securing our environment for future generations.

Transforming human societies

La Trobe has a long-standing commitment to understanding national and global problems. Our research confronts social challenges such as human rights, migration, sustainable development, inequality, Indigenous issues and rapid economic and political change and works to create a just and sustainable future.

Understanding disease

La Trobe is in a strong position to contribute to the move towards personalised medicine. We develop diagnostic tools for genetic diseases and help understand the origins of acquired diseases such as cancer, heart disease and diabetes. Our direct links to clinics and clinicians means that our findings can be quickly passed on to the broader community.



“

The research supervision here is much better than any I have had elsewhere. My supervisor Dr Robert Horvath has been the most amazing support and mentor in this whole process. He is always listening carefully and providing guidance whenever I have encountered trouble.

I spent the whole of 2015 primarily in Kazakhstan and Tajikistan, on a La Trobe-supported fieldwork trip. I really enjoyed being in the field; that has been the best part of my candidature yet. What keeps me motivated is the belief that the knowledge I create now may one day be utilised to facilitate democratic development in the Republic of Kazakhstan.

”



Mia Tarp Hansen

PhD in Political Science
'Civil Society in the Republic of Kazakhstan'
Denmark

The right research degree for you

La Trobe University offers graduate researchers four types of research degree, depending on your goals, and your educational and professional background.

Doctor of Philosophy (PhD)

The award of a PhD degree depends on the examination of a completed thesis of typically 80 000 words or less – although there can be differences depending on your field of research. The designated maximum period of study is four years full-time, and candidates must gain through their studies, and demonstrate in their thesis, a substantial body of knowledge at the frontier of a field of work or learning, including knowledge that constitutes an original contribution.

La Trobe PhD – with an industry focus

Our La Trobe PhD may be tailored to provide candidates with more industry experience. Candidates may choose to undertake research projects that address real-world challenges of critical importance to an industry partner, and may complete a two-year placement embedded within the partner organisation, supported by La Trobe and industry supervisors. In addition, candidates will be connected to an industry mentor (a senior leader from the partner organisation), providing broad insight into the industry sector and its operations. Upon completion, you will graduate with a La Trobe PhD degree, but with the added benefits of having obtained additional industry experience.

Master's degree by Research

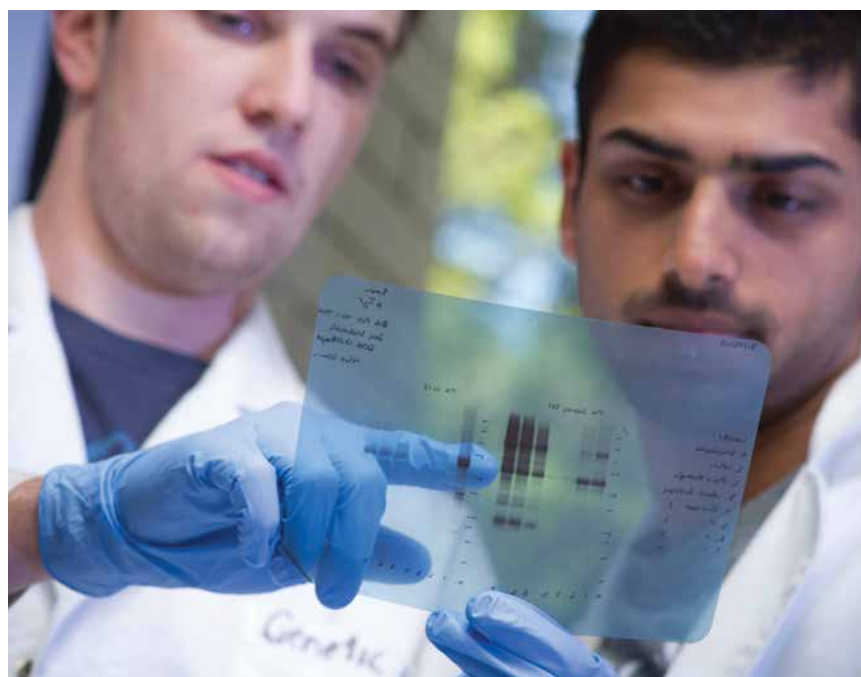
The award of the degree depends on the examination of a completed thesis of typically 50 000 words or less. The designated maximum period of study is two years full-time and candidates must gain through their studies, and demonstrate in their thesis, a body of knowledge that includes the understanding of recent developments in one or more disciplines.

A Master's may be based on creative work and its exegesis.

Find out more about our research degrees by visiting:
latrobe.edu.au/research/future/degree

Professional Doctorate

This type of degree consists of coursework (one third) and research elements (two thirds). The award of the degree depends on both coursework results and the examination of a completed research thesis of typically 60 000 words or less. The designated maximum period of study is four years full-time, and candidates must make an original and substantial contribution of direct relevance to their profession (in the case of the Doctor of Juridical Science, a substantial and original contribution to knowledge in the context of professional practice).



Find a supervisor

Undertaking graduate research study under the supervision of the right academic supervisors can be the difference between successfully completing to a high standard and missing out. At La Trobe we recognise that the relationships you develop with your supervisors will continue long after you complete your studies and throughout your professional career. This is why it is critical that you are matched with supervisors who share your passion for your chosen field of research, and can guide your development from the beginning of your degree to completion.

All prospective international graduate researchers must make contact with a prospective supervisor before they can lodge an application for candidature.

To help you find a research supervisor and reach agreement for supervision, add your details to our 'online enquiry' form. The enquiry will ask a series of targeted questions about your academic background and your proposed research interests, which will help you to locate supervision and ensure resources are available to support your research project.

latrobe.edu.au/research/future/apply/enquiry

To help you best frame your enquiry, consider your proposed research topic in the form of a brief description of a couple of sentences. While research topics evolve over time as candidates progress in their degree, having a clear starting point will help identify best fit supervisors at time of application.

A guide on how to draft a strong research proposal, along with detailed information on the application process, is available at:
latrobe.edu.au/research/future/apply.

“

I work as an English lecturer back in Vietnam, so research skills are critical. I pursued a PhD in Australia to enhance my knowledge and research skills, and improve my English. La Trobe academics, Dr Donna Starks and Dr Howard Nicholas, have had a profound impact on me. They were inspiring lecturers, supervisors of my minor thesis during my Master's, and are now supervising my PhD. I love the Melbourne Campus so much I've been spending more time at uni than at home!



Tu Thanh Tran

PhD
Vietnam

”



Get the right support

La Trobe's Graduate Research School

La Trobe University is investing strongly in enhancing the University's research community, environment and culture. We continue to build our reputation as an institution that provides superior support for our researchers.

We work to make sure our graduate research candidates receive high quality supervision and have access to a rich, well-rounded research education experience.

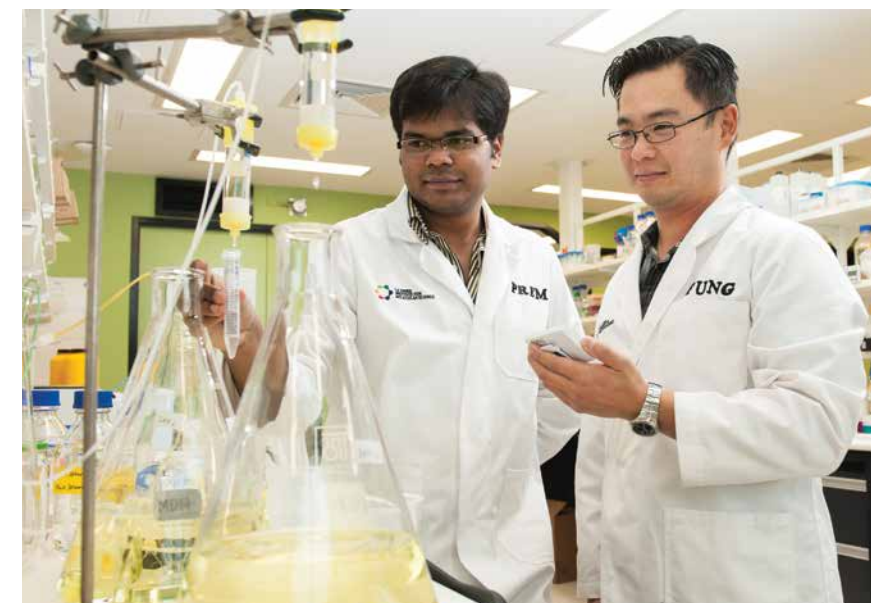
Research Education and Development (RED)

We foster an active and collaborative research environment at La Trobe. We run an active annual program of activities that support all researchers, especially graduate research candidates and early career researchers. This support includes a suite of workshops and research development initiatives with external professionals.

Programs are available in a broad range of areas including career development, communicating your research, managing your research, research funding and how to get it, research writing and publication, and commercialisation and research entrepreneurship.

Our annual special events for graduate researchers include:

- **3MT® (Three Minute Thesis Competition)**
The 3MT® is a research communication exercise that challenges PhD students to present a compelling oration on their thesis topic and its significance in just three minutes. 3MT® develops academic, presentation and research communication skills, and increases graduate researchers' capacity to effectively explain their research in language appropriate to an intelligent, but non-specialist, audience.
- **Weekly 'Shut Up and Write!' (SUAW) sessions**
These weekly facilitated writing sessions are designed to help researchers get their writing done! SUAW uses the Pomodoro method of focused writing interleaved with short breaks.
- **Academic Writing Month (ACWRIMO)**
La Trobe's Academic Writing Month (LTUacwrimo for short) is a month-long academic write-a-thon that takes place every November. It helps candidates to think about how they write, form a valuable writing support network, build better habits for the future, and achieve tangible writing goals.



- An Early Career Researcher (ECR) network

Our Research Education and Development team consults regularly with the ECR Network on development opportunities and provides advice, promotional and practical support for focused networking events to build ECR connections across the institution.

- **Our Intellectual Climate Fund scheme**
encourages graduate researchers to lead a range of academic, social and cultural activities that will seed or enhance a stimulating intellectual climate and supportive network within their local graduate research community.

Graduate researchers who are successful receive funding to organise academic activities, such as conferences and symposia, visual exhibitions, seminars, master-classes and visiting speakers.

Industry and external partnerships

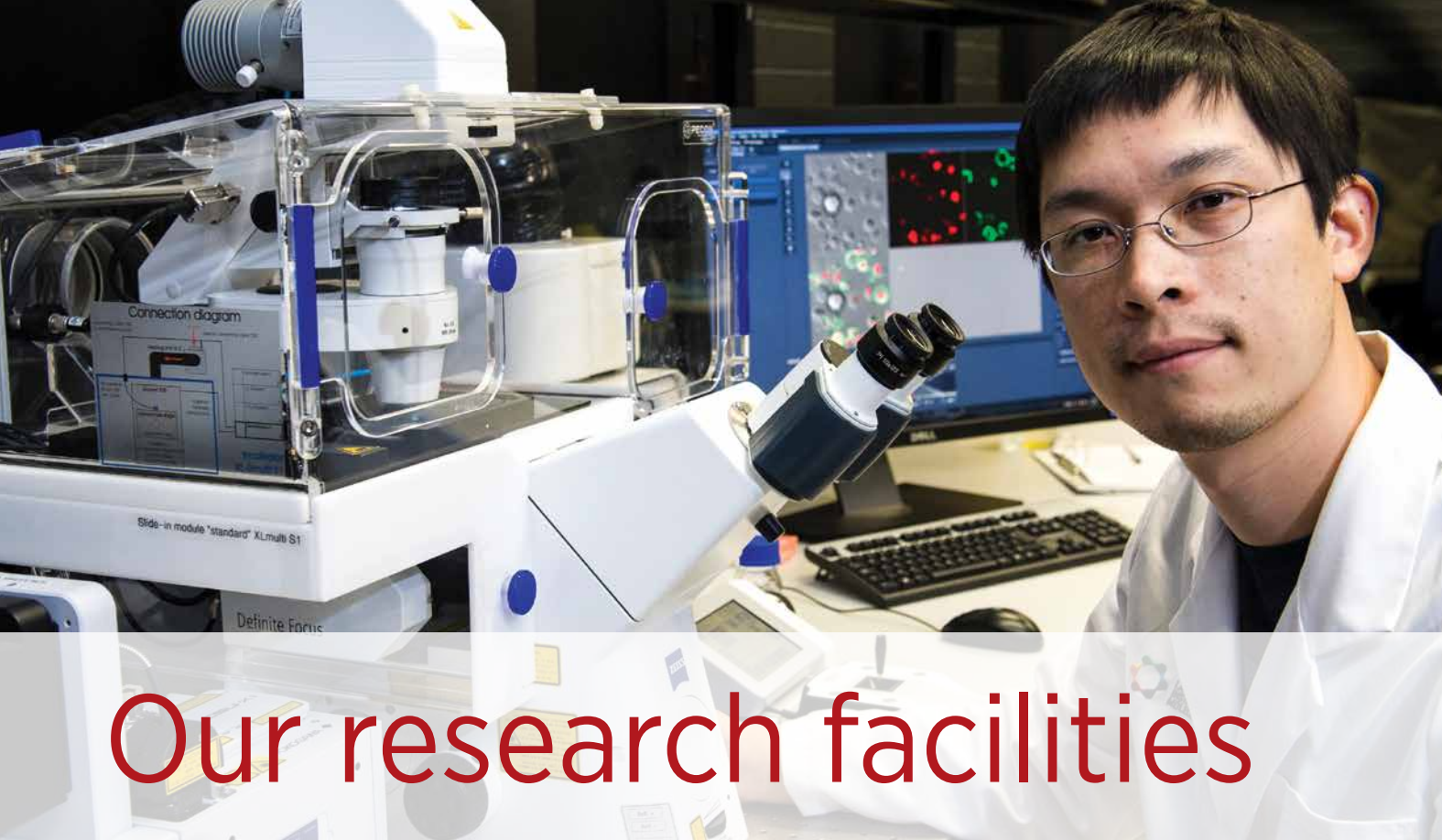
We are constantly seeking to strengthen our external partnerships and transform our capacity as a teaching and research university.

Our focus on developing partnerships with industry, local advocacy groups, government organisations and international development agencies ensures that our research has a positive impact on the community.

Through our partnerships, graduate researchers have the opportunity to collaborate and gain experience with industry through paid internships and mentoring, increasing their employability and giving them more choice in their career paths.

Find out more:
latrobe.edu.au/researchers/grs/industry-community





Our research facilities

La Trobe provides state-of-the-art equipment to help facilitate groundbreaking research.

Australian Synchrotron

We are a foundation investor of the Australian Synchrotron, based a short drive from the La Trobe's Melbourne Campus. Classified as the largest scientific user facility in the southern hemisphere, the Australian Synchrotron is recognised for major breakthroughs across a wide range of scientific and industrial applications, from medical research to micro-manufacturing. A number of La Trobe instruments are permanently based at the synchrotron facility.

Comprehensive Proteomics Research Platform

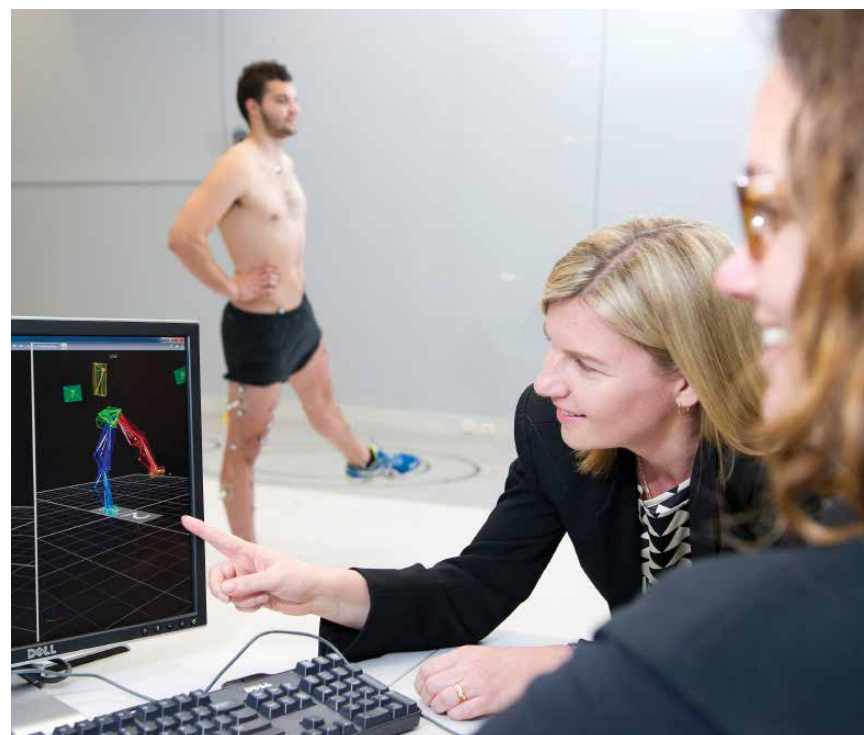
The Proteomics Platform offers a suite of synergistic capabilities for the characterisation of proteins to address a broad variety of molecular research questions. The workflow of capabilities and expertise enables the identification and quantitation of biomolecules from complex mixtures through to structure determination and analysis of interactions, kinetics and thermodynamics. Core expertise in advanced experimental design, informatics, and data analysis underpins the three main capabilities of the platform.

▲ Confocal light microscopy

Dr Ivan Poon uses the Zeiss Cell Observer spinning disk confocal microscope for high speed 3D imaging of living cells.

▼ Gait Laboratory

3D motion analysis testing being conducted in the Gait Laboratory.



Gait Laboratory

The Gait Laboratory is a state-of-the-art research facility within the College of Science, Health and Engineering. It is used to understand the structure and function of the musculoskeletal system, and the causes, prevention and treatment of musculoskeletal injuries and disease, with a particular emphasis on lower extremity disorders and those affecting balance and gait.

Genomics Research Platform

The Genomics and Bioinformatics Research Platform provides investigators with the latest in 'next generation sequencing' capabilities to facilitate wide-ranging research projects requiring highly detailed global DNA and RNA sequence analysis. The platform is supported by bioinformaticians who provide advice on experimental methodology and interpretation of genomic data.

LIMS Bioimaging Facility

The LIMS Microscopy and Imaging Facility provides a broad range of confocal and electron microscopy instrumentation, including specimen preparation laboratories. It contains cutting-edge light microscopy equipment for biological imaging of live cells and high-powered electron microscopes for nanoscale imaging of frozen and fixed samples.

Library research facilities

As a graduate research candidate, you will have access to purpose-built and designed research areas in the Melbourne and Bendigo Campus libraries. Research students from all campuses are welcome to use these purpose-built spaces.

Materials Science Facilities

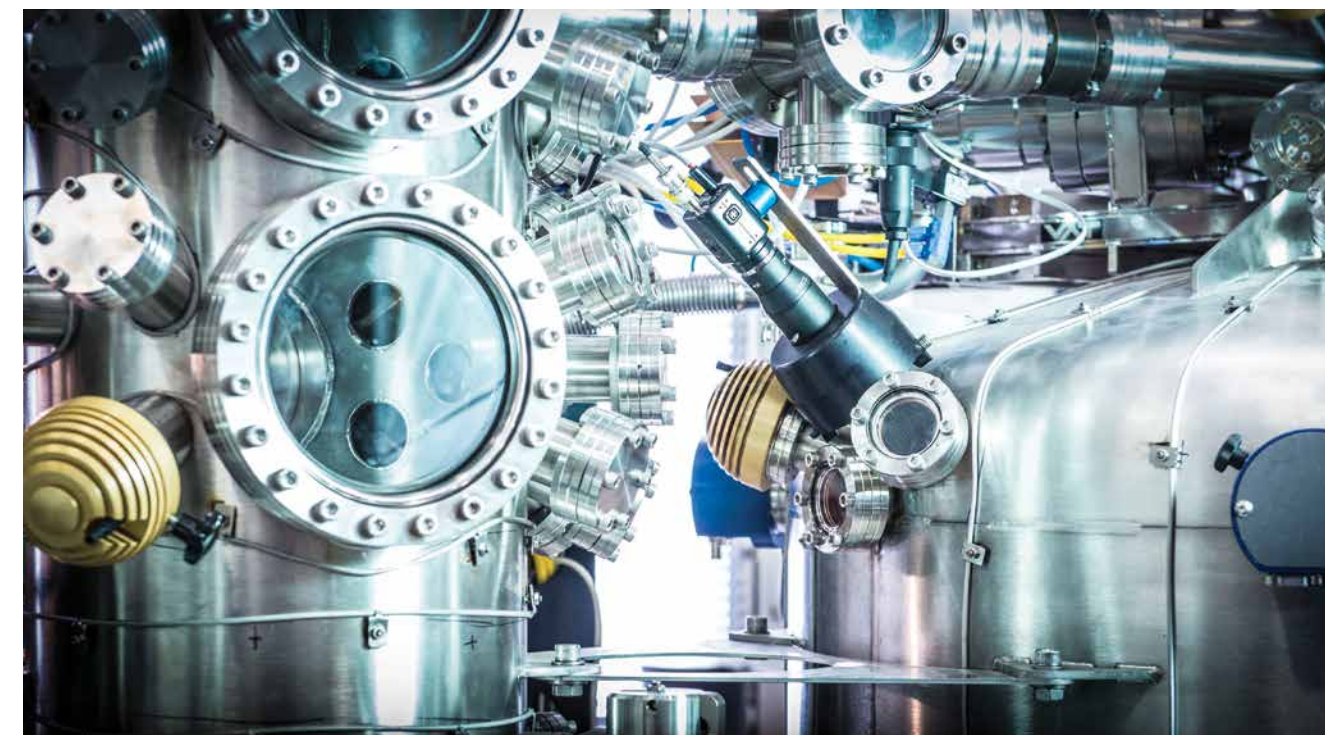
The Department of Chemistry and Physics and Centre for Materials and Surface Science offer Australia's most comprehensive suite of surface science equipment. Contemporary surface analytical techniques allow the elemental composition, chemistry and molecular structure of the outermost layers of solid surfaces to be determined, in addition to atom-scale imaging and engineering.

Palaeoscience Laboratory

The Palaeoscience labs (including the Australian Archaeomagnetism Lab) are part of La Trobe University's research focus on the past record of human origins, migrations and interactions with changing climate and environment. They include state-of-the-art archaeological geophysics and visualisation equipment and focus on the origins and spread of humans and their technology throughout the globe by dating archaeological and fossil landscapes to understand early human biogeography. The laboratories are augmented by the Australian Palaeoanthropology and Geoarchaeology Field School run at the early hominin site of Drimolen in South Africa.

▼ High Resolution Toroidal Angle-Resolving Electron Spectrometer

The spectrometer is a state-of-the-art high-resolution electron detector that can be used for determining the electronic states in crystalline solids and in photoelectron diffraction studies. It is being designed and built at La Trobe for use on a beamline at the Australian Synchrotron.



2017 Research Degrees

MEL Melbourne	AW Albury-Wodonga	SHP Shepparton	CC City Campus (Collins St)
BEN Bendigo	MIL Mildura	SYD Sydney	FS City (Franklin St)

Course title	University handbook code	Degree type	CRICOS	Degree length	Annual fee (A\$) ¹	Campus							
						MEL	BEN	A-W	MIL	SHP	SYD	CC	FS

College of Arts, Social Sciences and Commerce (ASSC) Full Research Degree Listing

Doctor of Education	RDE	Professional Doctorate	009388B	4 years	28 500	●	●	●					
Doctor of Juridical Science	LDSJD	Professional Doctorate	075399G	3 years	31 500	●							
Doctor of Philosophy (Business, Economics and Law)	LDPH	PhD	002106G	4 years	31 000	●							
Doctor of Philosophy (Humanities and Social Sciences)	ADPH	PhD	001732M	4 years	29 000	●	●	●	●	●			
Master of Applied Linguistics	EDMAL	Master by Research	055078A	2 years	28 000	●	●						
Master of Arts	AMAR	Master by Research	002093G	2 years	28 500	●	●						
Master of Arts (Business, Economics and Law)	LMAR	Master by Research	055083D	2 years	31 000	●	●						
Master of Business	LMBR	Master by Research	055085B	2 years	31 000	●	●						
Master of Commerce	LMCR	Master by Research	055086A	2 years	31 000	●							
Master of Economics	LMER	Master by Research	055087M	2 years	31 000	●							
Master of Education	EDMER	Master by Research	017544F	2 years	28 000	●	●						
Master of Law	LMLR	Master by Research	055091D	2 years	31 500	●							
Master of Outdoor Education and Environment	EMOER	Master by Research	060679M	2 years	28 000		●						
Master of Planning	AMPRB	Master by Research	075871K	2 years	28 500		●						
Master of Visual Arts	RMVA	Master by Research	055102F	2 years	27 500		●		●				

Semester starts	IELTS	TOEFL (Minimum)	PTE (Minimum)	Academic Entry Requirements
-----------------	-------	-----------------	---------------	-----------------------------

Anytime	6.5/6.0	Minimum score of 575 (minimum score of 5 in the Test of Written English). Minimum score of 80 with minimum overall for SLR 18; W 23.	64 with no communicative skill score less than 59	An Australian Master's degree or Bachelor's degree with Honours at H1 or H2A level, or approved international equivalent, plus at least three years of relevant professional experience. You are also required to provide evidence of research expertise.
This program has fixed intake dates: First semester 27 February 2017, Second semester 24 July 2017.	6.5/6.0	Minimum score of 575 (minimum score of 5 in the Test of Written English). Minimum score of 80 with minimum overall for SLR 18; W 23.	64 with no communicative skill score less than 59	A Master of Laws (LLM) from La Trobe University with a minimum B-Grade average, or an English-language LLM program from another university at an equivalent standard, and (b) evidence of research expertise, such as: completion of a research degree (eg. a Research Masters degree); articles published in refereed journals; or a minor thesis completed within the LLM, and (c) at least two years of relevant professional experience.
This program has fixed intake dates for the business school stream: First semester 27 February 2017, Second semester 24 July 2017. The law school stream may be commenced anytime.	6.5/6.0	Minimum score of 575 (minimum score of 5 in the Test of Written English). Minimum score of 80 with minimum overall for SLR 18; W 23.	64 with no communicative skill score less than 59	An Australian Master's degree or Bachelo'r's degree with Honours at H1 or H2A level, or approved international equivalent. You must also provide evidence of substantial prior research expertise.
Anytime	6.5/6.0	Minimum score of 575 (minimum score of 5 in the Test of Written English). Minimum score of 80 with minimum overall for SLR 18; W 23.	64 with no communicative skill score less than 59	An Australian Master's degree or Bachelo'r's degree with Honours at H1 or H2A level, or approved international equivalent. You must also provide evidence of substantial prior research expertise.
Anytime	6.5/6.0	Minimum score of 575 (minimum score of 5 in the Test of Written English). Minimum score of 80 with minimum overall for SLR 18; W 23.	64 with no communicative skill score less than 59	A three or four-year Australian Bachelor's degree, or approved international equivalent. If you have a four-year Bachelor of Education, an Honours degree or a relevant specialist Graduate Diploma from a recognised university or institution, you may be eligible for 60 credit points of Advanced Standing (credit).
Anytime	6.5/6.0	Minimum score of 575 (minimum score of 5 in the Test of Written English). Minimum score of 80 with minimum overall for SLR 18; W 23.	64 with no communicative skill score less than 59	An Australian Bachelor's degree with Honours at H2A level or higher, or approved international equivalent. If you have Honours at H2B level, or equivalent, you may still be considered in some instances.
Anytime	6.5/6.0	Minimum score of 575 (minimum score of 5 in the Test of Written English). Minimum score of 80 with minimum overall for SLR 18; W 23.	64 with no communicative skill score less than 59	An Australian Bachelor's degree with Honours at H2A level or higher, or approved international equivalent. If you have Honours at H2B level, or equivalent, you may still be considered in some instances.
Anytime	6.5/6.0	Minimum score of 575 (minimum score of 5 in the Test of Written English). Minimum score of 80 with minimum overall for SLR 18; W 23.	64 with no communicative skill score less than 59	An Australian Bachelor's degree with Honours at H2A level or higher, or approved international equivalent. If you have Honours at H2B level, or equivalent, you may still be considered in some instances.
Anytime	6.5/6.0	Minimum score of 575 (minimum score of 5 in the Test of Written English). Minimum score of 80 with minimum overall for SLR 18; W 23.	64 with no communicative skill score less than 59	An Australian Bachelor's degree with Honours at H2A level or higher, or approved international equivalent. If you have Honours at H2B level, or equivalent, you may still be considered in some instances.
Anytime	6.5/6.0	Minimum score of 575 (minimum score of 5 in the Test of Written English). Minimum score of 80 with minimum overall for SLR 18; W 23.	64 with no communicative skill score less than 59	An Australian Bachelor's degree with Honours at H2A level or higher, or approved international equivalent. If you have Honours at H2B level, or equivalent, you may still be considered in some instances.
Anytime	6.5/6.0	Minimum score of 575 (minimum score of 5 in the Test of Written English). Minimum score of 80 with minimum overall for SLR 18; W 23.	64 with no communicative skill score less than 59	An Australian Bachelor's degree with Honours at H2A level or higher, or approved international equivalent. If you have Honours at H2B level, or equivalent, you may still be considered in some instances.
Anytime	6.5/6.0	Minimum score of 575 (minimum score of 5 in the Test of Written English). Minimum score of 80 with minimum overall for SLR 18; W 23.	64 with no communicative skill score less than 59	An Australian Bachelors degree with Honours at H1 or H2A level, or approved international equivalent. Applicants with Honours at H2B level, or equivalent, may be considered in some instances.
Anytime	6.5/6.0	Minimum score of 575 (minimum score of 5 in the Test of Written English). Minimum score of 80 with minimum overall for SLR 18; W 23.	64 with no communicative skill score less than 59	An Australian Bachelor's degree in planning or international equivalent, with fourth-year results equivalent to H1 or H2A or an Honours degrees in related areas. If you have Honours at H2B level or equivalent, you may still be considered in some instances.
Anytime	6.5/6.0	Minimum score of 575 (minimum score of 5 in the Test of Written English). Minimum score of 80 with minimum overall for SLR 18; W 23.	64 with no communicative skill score less than 59	An Australian Bachelor's degree in Visual Arts with Honours at H1 or H2, or an approved international equivalent, with a strong portfolio and exhibition record.

2017 Research Degrees

MEL Melbourne	AW Albury-Wodonga	SHP Shepparton	CC City Campus (Collins St)
BEN Bendigo	MIL Mildura	SYD Sydney	FS City (Franklin St)

Course title	University handbook code	Degree type	CRICOS	Degree length	Annual fee (A\$) ¹	Campus							
						MEL	BEN	A-W	MIL	SHP	SYD	CC	FS

College of Science, Health and Engineering (SHE) Full Research Degree Listing

Doctor of Clinical Science (Clinical Vision Sciences)	HDCS	Professional Doctorate	054041M	4 years	33 500	●							
Doctor of Clinical Science (Occupational Therapy)	HDCS	Professional Doctorate	054041M	4 years	33 500	●							
Doctor of Clinical Science (Prosthetics and Orthotics)	HDCS	Professional Doctorate	054041M	4 years	33 500	●							
Doctor of Nursing	HDNR	Professional Doctorate	024379M	4 years	32 500	●		●					
Doctor of Philosophy (Health Sciences)	HDPH	PhD	006629C	4 years	33 500	●	●	●					●
Doctor of Philosophy (Science)	SDPH	PhD	072940D	4 years	33 500	●	●	●					
Doctor of Physiotherapy	HDP	Professional Doctorate	029306K	4 years	33 000	●							
Doctor of Public Health	HDPUH	Professional Doctorate	029304A	3 years	34 000	●							●
Master of Agricultural Science	SMASR	Master by Research	055077B	2 years	34 000	●							
Master of Applied Science	HMASR	Master by Research	074418F	2 years	34 500	●	●	●					●
Master of Engineering	SMER	Master by Research	055088K	2 years	33 000	●	●						
Master of Psychological Science	SMPSR	Master by Research	071896M	2 years	32 000	●							
Master of Science	SMSR	Master by Research	071897K	2 years	34 000	●	●		●				
Master of Social Work	HMSWR	Master by Research	055101G	2 years	29 500	●	●	●	●				

Semester starts	IELTS	TOEFL (Minimum)	PTE (Minimum)	Academic Entry Requirements
-----------------	-------	-----------------	---------------	-----------------------------

1	6.5/6.0	Minimum score of 575 (minimum score of 5 in the Test of Written English). Minimum score of 80 with minimum overall for SLR 18; W 23.	64 with no communicative skill score less than 59	Australian Master's degree or Bachelors degree with Honours at H1 or H2A level, or approved international equivalent and at least three years of relevant professional experience. You must also provide evidence of substantial research expertise.
1	6.5/6.0	Minimum score of 575 (minimum score of 5 in the Test of Written English). Minimum score of 80 with minimum overall for SLR 18; W 23.	64 with no communicative skill score less than 59	An Australian Master's degree or Bachelor's degree with Honours at H1 or H2A level, or approved international equivalent, plus at least three years of relevant professional experience. You are also required to provide evidence of research expertise.
1	6.5/6.0	Minimum score of 575 (minimum score of 5 in the Test of Written English). Minimum score of 80 with minimum overall for SLR 18; W 23.	64 with no communicative skill score less than 59	An Australian Master's degree or Bachelor's degree with Honours at H1 or H2A level, or approved international equivalent, plus at least three years of relevant professional experience. You are also required to provide evidence of research expertise.
1	6.5/6.0	Minimum score of 575 (minimum score of 5 in the Test of Written English). Minimum score of 80 with minimum overall for SLR 18; W 23.	64 with no communicative skill score less than 59	An Australian Master's degree or Bachelor's degree with Honours at H1 or H2A level, or approved international equivalent, plus at least three years of relevant professional experience. Applicants are also required to provide evidence of research expertise. This course is not open to international inbound students, though is open to off-shore students if they meet the entry requirements.
Anytime	6.5/6.0	Minimum score of 575 (minimum score of 5 in the Test of Written English). Minimum score of 80 with minimum overall for SLR 18; W 23.	64 with no communicative skill score less than 59	An Australian Master's degree or Bachelo'rs degree with Honours at H1 or H2A level, or approved international equivalent. You must also provide evidence of substantial prior research expertise.
Anytime	6.5/6.0	Minimum score of 575 (minimum score of 5 in the Test of Written English). Minimum score of 80 with minimum overall for SLR 18; W 23.	64 with no communicative skill score less than 59	An Australian Master's degree or Bachelo'rs degree with Honours at H1 or H2A level, or approved international equivalent. You must also provide evidence of substantial prior research expertise.
1, 2	7.0 no band under 7.0	Minimum score of 600 (minimum score of 6 in the Test of Written English). Minimum score of 94 with minimum overall for SLR 24; W 27.	72 with no communicative skill score less than 68	A four-year Bachelor of Physiotherapy, or equivalent, and eligibility for registration as a physiotherapist in Victoria. You must have an Australian Master's degree or Bachelor's degree with Honours at H1 or H2A level, or approved international equivalent, plus at least three years of relevant professional experience. You are also required to provide evidence of research expertise.
1, 2	6.5/6.0	Minimum score of 575 (minimum score of 5 in the Test of Written English). Minimum score of 80 with minimum overall for SLR 18; W 23.	64 with no communicative skill score less than 59	An Australian Master's degree or Bachelors degree with Honours at H1 or H2A level, or approved international equivalent, plus at least three years of relevant professional experience. You are also required to provide evidence of research expertise.
Anytime	6.5/6.0	Minimum score of 575 (minimum score of 5 in the Test of Written English). Minimum score of 80 with minimum overall for SLR 18; W 23.	64 with no communicative skill score less than 59	An Australian degree with Honours in science, or its equivalent, with a specialisation in an agricultural or biological discipline. If you have Honours at H2B level or equivalent, you may still be considered in some instances.
1, 2	6.5/6.0	Minimum score of 575 (minimum score of 5 in the Test of Written English). Minimum score of 80 with minimum overall for SLR 18; W 23.	64 with no communicative skill score less than 59	An Australian Bachelor's degree with Honours at H1 or H2A level, or an approved equivalent. If you have Honours at H2B level, or equivalent, you may still be considered in some instances.
Anytime	6.5/6.0	Minimum score of 575 (minimum score of 5 in the Test of Written English). Minimum score of 80 with minimum overall for SLR 18; W 23.	64 with no communicative skill score less than 59	An Australian Bachelor's degree with Honours at H1 or H2A level, or approved international equivalent. If you have Honours at H2B level, or equivalent, you may be considered in some instances.
Anytime	6.5/6.0	Minimum score of 575 (minimum score of 5 in the Test of Written English). Minimum score of 80 with minimum overall for SLR 18; W 23.	64 with no communicative skill score less than 59	Bachelor of Psychological Science with Honours (at least upper H2A greater than 75 per cent), or approved international equivalent. If you have Honours at H2B level or equivalent, you may still be considered in some instances.
Anytime	6.5/6.0	Minimum score of 575 (minimum score of 5 in the Test of Written English). Minimum score of 80 with minimum overall for SLR 18; W 23.	64 with no communicative skill score less than 59	An Australian Bachelor's degree with Honours at H1 or H2A level, or an approved equivalent. If you have Honours at H2B level, or equivalent, you may still be considered in some instances.
1, 2	6.5/6.0	Minimum score of 575 (minimum score of 5 in the Test of Written English). Minimum score of 80 with minimum overall for SLR 18; W 23.	64 with no communicative skill score less than 59	An Australian Bachelor's degree with Honours at H1 or H2A level, or approved international equivalent. If you have Honours at H2B level, or equivalent, you may still be considered in some instances.

Fees and scholarships

Gain full or partial payment of your tuition fees with a scholarship or sponsored education.

If you are studying a three year course, the complete cost of your course will be three times the Annual Tuition Fee.

You should also consider the costs of:

- living in Australia
- overseas student health cover fees
- banking in Australia
- working while studying.



for a period of two years for a Master's by research degree, and three years for a PhD degree. LTUFFRS are awarded on the basis of academic merit and research capacity to suitably qualified overseas graduates eligible to commence a higher degree (doctoral or Master's) by research.

Stipend scholarships

La Trobe University Postgraduate Research Scholarships (LTUPRS)

These scholarships are normally available for full-time research Master's or doctoral candidates, are competitive and are based on academic merit. Applicants must have completed at least four years of tertiary studies at a very high level of achievement (i.e. first class honours degree or equivalent) at an Australian university or recognised overseas university.

latrobe.edu.au/research/future/costs-scholarships

The David Myers Research Scholarship

Each year the University offers the highest University-ranked applicants for a graduate research scholarship in each College the David Myers Research Scholarship. The scholarship is open to outstanding individuals, regardless of discipline or nationality. The scholarship includes a top-up of A\$5 000 per annum for three years full-time study for a PhD or 2 years full-time study for a Master's degree and a research support grant of up to A\$3 000 per annum to assist with costs such as laboratory consumables, fieldwork and attendance at conferences, and relocation expenses to a campus of the University.

La Trobe University Research Equity Scholarships

Up to five La Trobe University Research Equity scholarships available each year to candidates who are Aboriginal or Torres Strait Islanders, have a disability, or come from a low socio-economic background.

Tuition and stipend scholarships

Endeavour Scholarships

Endeavour Scholarships and Fellowships are internationally competitive, merit-based scholarships funded by the Australian Government that support citizens around the world to undertake study, research and professional development in Australia and for Australians to do the same overseas.

internationaleducation.gov.au/endeavour

Australia Awards

Australia Awards are prestigious international scholarships and fellowships funded by the Australian Government offering the next generation of global leaders an opportunity to undertake study, research and professional development.

australiaawards.gov.au

Your host country

Some countries have their own scholarships scheme to support international higher degree research. Please check with your own government or your employer about local possibilities.

latrobe.edu.au/study/how-to-apply/international/sponsored-program

How to apply

1

Check your eligibility

In addition to the prerequisites for your chosen research degree, as an international applicant you will also have to provide evidence that you meet the minimum English language requirements set for your course. You can find information about the minimum requirements for your course and the different forms of evidence and test results we accept under your preferred course:

latrobe.edu.au/research/future/apply

2

Find your supervisor

Before you apply for graduate research candidature you must identify a potential supervisor and receive in-principle approval for your research project. You will need to include your potential supervisor's details on your completed application form.

latrobe.edu.au/research/future/apply/enquiry

3

Submit your application

Download, complete and submit the Graduate Research Candidature and Scholarship Application Form. Ensure that you provide all relevant documentation as required. For more information visit:

latrobe.edu.au/research/future/apply

International applicants

E ltiresearch@latrobe.edu.au.

Mail

Graduate Research School
La Trobe International
La Trobe University
Victoria 3086
Australia



Research highlights

Research is at the heart of our reputation as a university committed to solving global problems and improving the welfare of human societies. Our world-class researchers work in collaboration with industry partners and multiple disciplines across La Trobe to deliver significant research outcomes.

Our research encourages innovative solutions and opportunities for research breakthroughs across important scientific and social issues. They hold significant strength and expertise in:

Ageing

Our researchers in ageing focus on care practices for people with dementia in residential care and community and residential aged care. The rural-based John Richards Initiative researches rural ageing and quality of life.

Brain, mind and behaviour

At La Trobe University we have a neurobiology research theme that investigates the biology and diseases associated with the nervous system. We also have the Olga Tennison Autism Research Centre advancing knowledge on the nature and causes of Autism Spectrum Disorders and developing evidence-based strategies for supporting individuals and families affected by autism. Research in molecular cell biology focuses on the role of extracellular vesicles in disease. We also study neurodegenerative diseases including Alzheimer's, Parkinson's and prion diseases.

Cancer

Our cancer research investigates the mechanisms of cancer initiation and progression, the crosstalk between cancer cells and the surrounding environment, and the potential of novel therapeutic approaches for combating disease.

Disability

The Living with a Disability Research Centre and the Olga Tennison Autism

Research Centre focus on research that improves services and effective delivery of support, facilitates participation and social inclusion and considers how people with cognitive disability can be effectively cared for in mainstream services.

Food

Our AgriBio Research Centre is Australia's first integrated agricultural systems biology research centre and one of Australia's premier agribiosciences facilities. At this world-class facility our researchers conduct research on plant and animal genomics, plant pathology, animal health, and agricultural sustainability. An aligned body of work considers diet and its effects on diabetes, cardiovascular disease and the metabolic syndrome.

Infection and immunity

Our researchers in La Trobe Institute of Molecular Science also specialise in studying the molecules used by viruses, bacteria, parasites and fungi to infect humans, animals and plants, and the immune response associated with this.

Institute for human security and social change

The Institute is committed to researching and supporting practice that engenders progressive social change. We seek to understand, and assist in the growth of work that redresses the inequalities and social injustices of the world. A key part is to explore the organisational, institutional and policy contexts that shape and are shaped by practice, so as to better understand how progressive practice can be best supported.

Law

La Trobe Law School is an innovative research hub that focuses on delivering research outcomes that have a significant impact on the community. While many of our staff conduct individual research in their areas of specialisation to advance knowledge in their fields, the school actively promotes socio-legal and interdisciplinary research that delivers effective outcomes for the private, public and non profit sectors.

Pregnancy, parenting and childhood

Our researchers at the Judith Lumley Centre study issues of major public health importance for mothers, parents and infants, including causes of preterm birth, breastfeeding, sexual and reproductive health, reducing violence against women and children, and transitions to parenthood. A particular focus is the experience of women of linguistically diverse backgrounds.

Rehabilitation

We have world-leading rehabilitation research in exercise and physical activity for people with disability or injuries, neurological rehabilitation and pulmonary rehabilitation. We have significant research programs in reducing falls and improving mobility for people with Parkinson's disease and musculoskeletal foot problems in older people. Our La Trobe Centre for Exercise and Sports Medicine researches topics including osteoarthritis after sports-related injuries.

Join the conversation



RED team members actively engage our research community via social media. You can join the conversation by following us on:



Facebook
facebook.com/latrobe.researchers



Twitter
twitter.com/LTUresearchers



Blog
redwritinghood.blogs.latrobe.edu.au

latrobe.edu.au/study/international

Disclaimer: The information contained in this publication is indicative only. While every effort is made to provide full and accurate information at the time of publication, the University does not warrant the currency, accuracy or completeness of the contents. The University reserves the right to make changes without notice, at any time in its absolute discretion, including but not limited to varying admission or assessment requirements, or varying or discontinuing any course or subject. To the extent permitted by law, the University does not accept responsibility for any loss or damage occasioned by use of any of the information contained in this publication. For course information updates, please visit: latrobe.edu.au/courses

La Trobe University is a registered provider under the Commonwealth Register of Institutions and Courses for Overseas Students (CRICOS). CRICOS Provider 00115M. Published by La Trobe University, May 2016.

Study at one of the most modern universities,
in one of the world's most student-friendly cities.
By choosing La Trobe, you are choosing real-world
experience, a global perspective and the chance
to study alongside people who are pushing the
boundaries of knowledge.

For further enquiries

Telephone

+61 3 9627 4805

Free-call

1800 619 768 (within Australia)

Online enquiries

international@latrobe.edu.au

Alternatively, meet our representatives in your home country. Our authorised agents will be able to help you with advice and information on the application process. All our agents go through a thorough selection process and have signed agreements with the University. To find out more visit:

latrobe.edu.au/study/contact/international/meet-our-representatives



CRICOS Provider 00115M

latrobe.edu.au/study/international

MELBOURNE | BENDIGO | ALBURY-WODONGA | SHEPPARTON | MILDURA