



UNIVERSITY OF LINCOLN

POSTGRADUATE 2020

CHANGE YOUR WORLD



Change Your World

Postgraduate study at the University of Lincoln can help you to further your career, develop your knowledge, or even prepare you to start your own business. It is an investment in yourself and your future.

Employers are increasingly looking for skilled individuals who can make a difference in today's global workplace. At Lincoln, we take an international approach to study and our programmes are underpinned by rigorous academic content and research. Our expert staff, modern facilities, close links with business, and world-leading research aim to provide you with the tools to achieve your career aspirations.

Each year we help hundreds of people change and enrich their lives. Now it's your turn.



**World
Leading**

More than half of our research was judged to be internationally excellent or world-leading according to the most recent Research Excellence Framework

**TOP
20**

17th overall in the Guardian University Guide 2020



**Gold
Award**

Awarded Gold in the Teaching Excellence Framework 2017



96%

96 per cent of our graduates were in employment or further study within six months of finishing their course according to the most recent Destinations of Leavers from Higher Education survey

Working in partnership with

Lincolnshire
Co-op

The
Guardian

Thomson Reuters
Foundation

Santander
Universities

Siemens



Contents

04	A Warm Welcome to Lincoln
06	The Lincoln Experience
08	What to Study
10	Living in Lincoln
12	Life on Campus
14	World-changing Research
16	Research Showcase
22	Visit Us
26	Our International Community
28	Supporting You on Your Journey
30	Your Postgraduate Career
32	Fees and Funding
34	Applying to Lincoln
36	Entry Requirements
38	Important Information
40	Our Colleges
44	Our Courses
88	A-Z of Courses

Change Your Life

A Warm Welcome to Lincoln



I am delighted that you are considering joining our academic community here at the University of Lincoln.

Studying at postgraduate level can introduce you to new ideas, the latest research, and important critical thinking skills. Postgraduate students have the opportunity to develop advanced specialist knowledge of a particular subject. This learning can enhance your current career ambitions or even enable you to embark on an entirely new path.

At Lincoln, we aim to provide excellent facilities, enabling technologies, expert staff, and a research-focused environment that encourages our postgraduate students to become part of our exciting and creative collaborative community. We have cultivated strong partnerships with employers, and our unique relationships with companies such as Siemens and the Lincolnshire Co-op demonstrate our innovative industry-engaged approach.

We are extremely proud of the contribution that our postgraduate students make to the University, including their engagement in an extensive range of research which is changing lives (highlighted on pages 14 to 21).

I very much hope that I will have the pleasure of welcoming you to the University of Lincoln in the near future.

Professor Mary Stuart CBE
Vice Chancellor, University of Lincoln

The Lincoln Experience

Whether you are just starting out or are mid-career, postgraduate study can help you to stand out. Choosing Lincoln is a positive step towards developing the skills needed to provide an edge in an increasingly competitive jobs market.

At Lincoln, we offer a range of challenging and engaging taught and research-based postgraduate programmes that build on our academic strengths. We are constantly refreshing our courses and adding new specialisms to meet the demands of our changing world. Our approach can help you to explore a line of research or acquire new skills, while being supported and having access to state-of-the-art resources.

Life as a postgraduate student involves much more than just studying for your degree. When you arrive at the University of Lincoln, you join a friendly, welcoming, and close-knit academic community of staff and students. You can get involved in research and special interest groups, contribute to publications, talks, and conferences, and take advantage of a broad range of opportunities to gain new skills.

Award-winning Teaching

The University of Lincoln prides itself on the quality of its teaching, which is reflected in our Gold award in the national Teaching Excellence Framework. Many of our academics are research-active in their respective fields and their work informs our taught postgraduate programmes. This enables us to ensure that our programmes are up-to-date and in line with industry developments.

In addition to the expertise of our academic teams, students at the University also get the chance to learn from visiting staff who are well-known and respected in their industries and professions. Our current students have been taught by naturalist and broadcaster Chris Packham, the former Poet Laureate Dame Carol Ann Duffy, and historian and art critic Andrew Graham-Dixon.

Each year the University welcomes a range of guest speakers who deliver inspirational talks in their respective fields as part of our Great Lives lecture series. These free events give students the chance to hear from experts outside of their subject areas and broaden their horizons. Past speakers have included award-winning health and science journalist Dr Michael Mosley, the Chief Executive of UK Research and Innovation Sir Mark Walport, and comedian, writer, and director Stewart Lee.

World-leading Research

At Lincoln, we strive to offer programmes that are underpinned by a vibrant research culture. We are home to award-winning academics whose work is making a real difference to society. This is reflected in the most recent Research Excellence Framework, where more than half of our

research was judged to be internationally excellent or world-leading.

Our reputation for research excellence helps us to attract experts from across the globe, enabling our students to benefit from access to leading academic staff. Our postgraduate students form an integral part of our lively research community, working with academics and undertaking their own extensive research projects.

The Doctoral School

The University's Doctoral School provides central student-focused support and training to develop and equip postgraduate researchers for academic and non-academic careers. Our training programmes in research skills, writing and publishing, communication, and career development complement local support provided by research

groups and Schools across the University.

The Doctoral School is a community of researchers where ideas and experiences can be shared between disciplines. It provides opportunities for Master's by Research, MPhil, PhD, and Professional Doctorate students to communicate and interact with the wider research community.

Great Industry Links

The University is recognised as setting a blueprint for excellence in industry engagement through its pioneering approach to working with employers. Our relationships with companies such as Siemens, Santander, *The Guardian*, and the Lincolnshire Co-op demonstrate our innovative industry-engaged approach. This has been acknowledged through a series of national awards and accolades,

including a Lord Stafford Award (2011) and a Times Higher Education Award (2012).

96%

of the University of Lincoln's most recent graduates were in work or further study within six months of finishing their course, with more than 80 per cent working in graduate-level roles, according to the Destinations of Leavers from Higher Education survey 2016/17.

Discover the Lincoln experience for yourself at one of our postgraduate events. See page 23 for more details.

What to Study

We offer a range of postgraduate study options at the University of Lincoln, from taught and research-based programmes, to professional and pre-registration courses.

Our postgraduate programmes offer a challenging and engaging balance of teaching and research. You may attend seminars and tutorials, or undertake laboratory work and research activities. Programmes are available across our four Colleges, spanning the arts, science, social science, and business. The right option for you will depend on what you are interested in, your existing qualifications, and your future career aspirations. Whichever option you choose, you will be expected to demonstrate a high degree of independent study.

Taught Programmes

Taught postgraduate programmes comprise three main stages, the first two of which are Postgraduate Certificate and Postgraduate Diploma. These consist of a number of primarily taught modules that are individually assessed and are a great way of building on your existing knowledge.

The final stage of taught postgraduate programmes is the Master's degree where, alongside the taught elements of the course, you will usually undertake an individual research-based project supervised by an academic with expertise in the subject area. Taught Master's programmes typically last from one year full-time to two or three years part-time. They are delivered in a variety of ways, ranging from weekly tutorials and seminar sessions, to modular study blocks of two to three days.

Research Programmes

Postgraduate research programmes generally comprise Master's and Doctoral (PhD) degrees. Master's by Research, Master of Research, and Master of Philosophy degrees all provide a useful stepping stone for those students interested in pursuing a Doctor of Philosophy (PhD) or making a career out

of research. Research degrees do not have a fixed duration as specific objectives and milestones can vary between projects, but Master's programmes typically last between one and two years full-time, while a Doctor of Philosophy can take between two and four years full-time.

Undertaking a research programme enables you to pursue a substantial piece of independent and original research in an area that interests you. It is usually supported by a written thesis and oral examination. Whichever route you choose, you will be supported by an experienced academic with specialist knowledge in that subject area.

When applying, you should review the University's research specialisms to ensure your proposal fits the expertise available at Lincoln. If you are invited to interview you will be expected to demonstrate that you have the necessary experience and skills to conduct postgraduate research in the area of your proposal.

Professional Development

The University of Lincoln provides a range of Continuing Professional Development (CPD) programmes and accredited short courses for working professionals to further refine their skills and knowledge. Visit www.lincoln.ac.uk/cpd for details of our CPD courses for health, social care, and education practitioners. To find out more about our leadership and management CPD programmes visit www.lincoln.ac.uk/libs-exec.

Explore Our Courses

Explore the full range of programmes and research opportunities we offer by subject area on pages 44 to 87. Alternatively, you can visit our website at www.lincoln.ac.uk/findacourse.





Living in Lincoln

One of the world's great historic cities, Lincoln is renowned for its fusion of old and new. The winning combination of a vibrant city centre and a historic Cathedral Quarter, both offering a rich variety of attractions, activities, and amenities, makes Lincoln a fantastic environment in which to live and study.

Exploring the City

Lincoln's Roman and medieval heritage blends together seamlessly with modern city living and the University's main campus is situated at the heart of it all on the spectacular Brayford Pool waterfront.

Within walking distance of the University is a range of restaurants, cafes, and bars overlooking the marina area, while the city's high street is just a short walk away, offering a mix of independent stores and national brands and chains.

The city's famous Steep Hill – a beautiful cobbled street lined with boutique shops and tea rooms – provides the gateway to the historic Cathedral Quarter and Bailgate area where independent shops and cafes nestle between the walls of the medieval Lincoln Castle and the grandeur of Lincoln Cathedral.

Lincoln offers a rich and diverse arts scene, boasting a wide range of museums and public art galleries giving visitors the chance to explore and experience both local and national culture. There is a lively programme of theatre events in the city's New Theatre Royal and Drill Hall, as well as the Lincoln Performing Arts Centre on campus. A variety of festivals are hosted in the city, including the Frequency Festival of Digital Culture, Lincoln Book Festival, and the Indie-Lincs international film festival.

For students wishing to explore further afield, the city is surrounded by beautiful countryside, quaint market towns, and fascinating history. A visit to one of Lincolnshire's seaside resorts is a great way to take a break from your studies and have fun in the sun with friends.

Finding Your Home

Located within easy reach of London and a number of other major cities, Lincoln is conveniently placed for those wishing to commute to the University. There are secure bicycle sheds on campus, and we are just a few minutes' walk from the main bus and train stations.

For postgraduate students looking for somewhere to live while studying in Lincoln, the University offers options to suit a range of needs and budgets, from on-campus accommodation to University-managed

developments and partnership halls just off campus.

Our on-campus accommodation, known as the Student Village, is comprised of two purpose-built waterfront complexes which place students close to the University's academic buildings, Student Services, and Students' Union, as well as the city's high street.

In addition, the University manages a range of halls of residence for those students who would prefer to live off campus but remain close by. Students can also find accommodation in our partnership halls. Working closely with our partners, we aim to ensure that the high standards we expect are met in their residences.

Private rentals are also available from a number of local letting agents. The University is part of the City of Lincoln Student Housing Accreditation Scheme and students can enjoy some of the lowest average rental costs in the country.

Whatever you are looking for, our Accommodation Services team is on hand to help you find your new home from home. Visit us at one of our Postgraduate Open Days to explore the options and find out more.

"I chose to carry on my adventure at Lincoln because I developed so much from doing my undergraduate degree here. I have seen how staff will go the extra mile to support and empower you to work harder, doing all they can to push you to reach your full potential."

Alexandra Bentley,
MSc Management student

Further Information:

Accommodation Services team
T: +44 (0)1522 886231
E: accommodation@lincoln.ac.uk
W: www.lincoln.ac.uk/accommodation

Life on Campus

At Lincoln, we constantly invest in our buildings and facilities as we strive to provide the best learning environment for our students.

We understand the importance of giving you the strongest possible foundation to help you achieve your aspirations. Whatever programme you choose, we aim to ensure that you have access to the latest equipment and resources to support your studies.

Over the past two decades, the University has invested more than £350 million in its Brayford Pool Campus, with ongoing investment in additional facilities and refurbishments of existing buildings.

Following the opening of our £28 million Isaac Newton Building and £19 million Sarah Swift Building, work is now underway to create a purpose-built building for the Lincoln Medical School to help train the next generation of doctors.

Studying

The University's facilities have been designed for the subject-specific needs of our students. Our buildings blend modern and innovative learning spaces with social spaces for group work and collaboration. This ethos was reflected in the Teaching Excellence Framework, where the University was commended for its "outstanding physical and digital resources which pervade all aspects of student experience, including state-of-the-art teaching spaces".

At the heart of student life at Lincoln is the University's Great Central Warehouse Library which provides access to more than 250,000 journals and 400,000 print and electronic books, as well as databases and specialist collections. The resources are regularly reviewed and developed by a team of subject

librarians who work closely with each academic department to ensure students have the materials they need.

The library is open 24/7 for the majority of the academic year and expert staff are on hand to help you navigate resources and support you with academic writing, statistical analysis, and referencing. The library also provides a wide range of practical support for students' learning and development, offering drop-ins, workshops, and individual appointments.

Socialising

When students are not studying, there are plenty of activities and amenities for them to enjoy on campus. Many of our buildings have their own catering facilities, offering an array of food and drink options, from quick snacks to hot

meals, including noodles, salads, deli sandwiches, and pizza. There is also a selection of vegetarian, vegan, gluten free, and halal options at many of our food outlets.

The University of Lincoln Students' Union operates several major on-campus venues, providing student-run spaces in which to socialise, and currently offers more than 150 sports and societies for students to get involved in. The campus is also home to Lincoln Performing Arts Centre which hosts a wide range of performances throughout the year, from family theatre to live jazz in its Zing Cafe Bar.

The University's on-campus Sports Centre provides many of the facilities used by the Students' Union sports clubs, including five-a-side football pitches, squash courts, basketball courts, hockey pitches,

and trampolines. The centre also offers a mix of fitness classes and a well-equipped gym. Members can make use of the cardio machines and resistance equipment, as well as the free weights area, and boxercise and spinning studios. Students can pay for each session individually or via a monthly membership fee. Please visit www.lincoln.ac.uk/sportatlincoln for more information.

"The laboratory facilities are nothing short of excellent. We have all the latest equipment at our disposal, including our own dedicated laboratory space which is essential for high quality research."

Abhishek Iyer,
PhD Pharmacy and
Pharmaceutical Sciences student



Visit Us

Explore the campus for yourself at one of our Postgraduate Open Days. Find out more on page 23.

World-changing Research

From developing new medical technologies to help improve cancer treatments, to exploring innovative ways to enhance accessibility in museums for an ageing population, the research of Lincoln's staff and students is making a real difference to society.

Tackling Global Challenges

At Lincoln, we believe in research that makes a tangible difference to people's lives. Our researchers are tackling some of the world's most challenging problems, from the fight against drug-resistant bacteria to mitigating the impacts of climate change.

The quality and breadth of research taking place at the University of Lincoln was highlighted in the most recent Research Excellence Framework (REF) which assesses research standards across UK universities.

More than half (53%) of the University of Lincoln's submitted research was rated as internationally excellent or world-leading (3* or 4*). The University was placed in the top ten nationally for the quality of its research outputs in two subject areas, reflecting substantial investments made in developing science and health research at Lincoln. We are in the top ten for the quality of our research in Agriculture, Veterinary, and Food Science, as well as for Allied Health Professions, Dentistry, Nursing, and Pharmacy.

With around £2 billion of quality-related research funding awarded to UK universities each year based on the REF scores, it is an important quality marker supporting the UK's continued global reputation for outstanding research.

Our reputation for research excellence helps us to attract experts from across the globe, and our students are able to benefit from access to leading academic staff. As a postgraduate student, you may have the opportunity to work alongside them on innovative, ground-breaking research projects.

Postgraduate Research Support

Research students at the University of Lincoln are supported to develop the analytical, critical thinking, and problem-solving skills in demand across industry and academia. The University offers a Researcher Development Programme as well as research-focused events, student-led research groups, and national and international networking opportunities to help you make the most of your time at Lincoln.

Postgraduate students are an integral part of our vibrant research community. The University's research institutes, centres, and groups form a rich, collegiate environment where research carried out by our staff, students, and partners is nurtured.

Explore some of the world-changing research taking place at the University of Lincoln in our Research Showcase on pages 16 to 21.

Research Showcase



The Future of Farming

Just as tractors and combine harvesters took over the reins from horse-pulled machinery in the early 20th Century, farmers and food manufacturers today are turning to new technology to stay ahead of global demand.

The University of Lincoln is leading the way forward, spearheading the development of next generation robots for agri-food production.

Thanks to major funding from the UK's Engineering and Physical Sciences Research Council, the University has launched the world's first Centre for Doctoral Training in agri-food robotics in collaboration with the University of Cambridge and the University

of East Anglia. The Centre specialises in research areas such as autonomous mobility in challenging environments, the harvesting of agricultural crops, soft robotics for handling delicate food products, and 'co-bots' for maintaining safe human-robot collaboration and interaction with human co-workers in farms and factories.

The University is also creating the first global centre of excellence in agri-robotics research after securing significant funding from the UK Government's Expanding Excellence in England (E3) Fund through Research England in recognition of its commitment to supporting the farms of the future.

Tackling the Rural Digital Divide

Digital connectivity and improving digital skills are essential for increasing business innovation and productivity, but rural areas across Europe are still experiencing a digital divide that is hampering their potential.

Liz Price, Dr Fiona Ashmore, and a team of economic development specialists at the University of Lincoln are part of the international CORA (Connecting Remote Areas with digital infrastructure) project examining this rural divide.

The project team is working to uncover and understand the barriers to digital inclusivity, and seeks to find potential solutions to change the status quo, helping to address the pressing need to stimulate digital infrastructure, services, and skills in rural areas.

Their findings will be developed to provide briefings to policymakers both in the UK and the EU, influencing the digital strategies and broadband technology policies of the future.

Improving Outcomes for Cancer Patients

With cancer a leading cause of death globally, the development of new and more effective treatment is becoming ever-more important.

At the University of Lincoln, internationally renowned expert in image engineering, Professor Nigel Allinson MBE, has developed new medical imaging technology that could revolutionise treatment for thousands of cancer patients. The £3.3 million OPTima (Optimising Proton Therapy through Imaging) project is being funded by the UK's Engineering and Physical Sciences Research Council.

One of the most complex medical imaging systems ever developed, the technology

makes it possible to provide more effective radiotherapy treatment for those living with cancer – particularly children and those fighting tumours that are close to the body's vital structures such as in the head or near the spinal cord.

The ground-breaking work uses protons rather than x-rays to create more accurate three-dimensional images of a patient's anatomy, improving the quality and feasibility of Proton Beam Therapy. The technology is now being deployed in one of the UK's two new NHS high energy Proton Beam Therapy Centres to help provide treatment planning and monitoring for patients with difficult to treat cancers.

Saving the World from Antibiotic Resistance

It is predicted that by 2050 an additional 10 million people will succumb to drug-resistant infections each year, presenting an urgent need for the development of new antibiotics.

A team led by Dr Ishwar Singh at the University of Lincoln is at the forefront of efforts to develop new drug treatments in this global fight against 'superbugs'. It has made vital advances towards developing a newly discovered antibiotic substance called teixobactin into a viable drug treatment.

The team is the first in the world to successfully create a simplified, synthesised form of teixobactin – a naturally occurring antibiotic capable of killing drug-resistant infections such as MRSA – and use it to

treat an infection in mice. A catalogue of simplified synthetic versions are now being developed with the hope of developing a drug for human clinical trials.

Their work marks a significant step towards producing the first new class of antibiotic drug in 30 years.



Breaking Records with Biomechanics

Cutting-edge motion capture technology at the University of Lincoln's Human Performance Centre is helping to make the impossible possible, using biomechanical variables to alter complex, real-world movement patterns to improve athletic performance.

Using the technology to assess human-equipment interaction, sport scientists are able to inform the design of specialist equipment tailored to individual athletes, enabling them to overcome their limitations. Their expertise was called upon by former British para-athlete Kelda Wood in her latest challenge to row 3,000 miles across the Atlantic Ocean.

Biomechanics specialist Franky Mulloy used motion capture technology to examine the extent to which Kelda was able to move her ankle while rowing and establish how other areas of her body compensated for a limited range of motion. This data helped her to adapt her rowing technique and informed the design of a personalised footplate, taking pressure off her body during the gruelling challenge and enabling her to row for longer periods of time.

In 2019, Kelda became the first para-rower ever to row solo across the Atlantic.

A Fresh Look at Exhibition Design and Curation

Since 2005 older people have been the fastest-growing visitor group to UK museums and galleries, presenting both opportunities and challenges for those responsible for the design and curation of exhibitions.

Working with Age UK Lincoln, RNIB Regional Centre (Midlands), and the National Centre for Craft & Design in Sleaford, Lincolnshire, a design specialist from the University of Lincoln undertook an innovative research project to explore inclusive design and curation principles to improve accessibility for those living with sight loss.

Professor Anne Chick co-researched and co-produced a multi-sensory non-permanent exhibition, demonstrating how local galleries and museums can develop and implement cost-effective design principles that enable those living with sight loss to enjoy exhibitions on equal terms with other visitors.

The results of the exhibition are now being used to develop practical guidelines for other national and regional visual arts venues and museums to draw upon.



Visit Us

The University of Lincoln offers a range of opportunities for prospective students to visit us throughout the year, enabling you to find out more about the University, the programmes we offer, and the wider city.

Open Days

Postgraduate Open Days provide the perfect opportunity to explore our campus, wander the wider city, and meet some of our current students. They provide an important insight into living and learning in Lincoln. You can attend talks, meet face-to-face with academic tutors, and speak to our dedicated staff about the things that matter to you, whether that is the programme, the support available, accommodation options, or fees and funding.

Postgraduate Brunches

In addition to our Open Days, the University also hosts Postgraduate Brunches throughout the year. These are more informal sessions designed to give a broader overview of postgraduate study, and are a good starting point for those who are keen to learn more about the possibilities.

Each Postgraduate Brunch has a different focus, enabling applicants to choose the topic which best suits their needs. They range from choosing the right Master's degree and demystifying doctoral study, to meeting our current postgraduate students and tips on making the most of your programme.

Informal Tours and Meet Your Course Tutor

If you would like to arrange a bespoke tour of the University of Lincoln, or a discussion with a course tutor over the phone, via Skype, or face-to-face, please contact our Postgraduate team on +44 (0)1522 886644.

Visits in Your Home Country

If you are located outside of the UK and are unable to visit us in Lincoln, we may be able to come to you. Academics and staff from our International Office often travel overseas. Please call our International Office on +44 (0)1522 886040 to find out when we are next in your country. Alternatively, you may be able to speak to one of our International Alumni Ambassadors around the world, who are happy to share their experience and advice about studying in Lincoln. Email alumni@lincoln.ac.uk to find out more.

Virtual Open Day

If you are not able to attend one of our postgraduate events in person, you can still explore everything Lincoln has to offer through our Virtual Open Day. Find out more at www.lincoln.ac.uk/vod.

Open Days

Wednesday 20 November 2019
Saturday 7 March 2020
Saturday 4 April 2020
Wednesday 24 June 2020

Postgraduate Brunches

Saturday 26 October 2019:
How to Choose Your Master's Degree

Saturday 1 February 2020:
Meet Our Postgraduate Students

Saturday 23 May 2020:
Everything You Want to Know about PhDs

Accelerated Application Event

Saturday 15 August 2020

A man with short brown hair, wearing a bright red zip-up jacket, dark brown trousers, and grey sneakers with white laces, is sitting in a red armchair. He is smiling and has his hands clasped in his lap. The setting is a modern, multi-level atrium with teal walls, white pillars, and a dark floor. In the background, there are other people sitting at tables, and a balcony with glass railings is visible above. The overall atmosphere is bright and contemporary.

Passion

“There is so much simplicity in nature’s perfection and so much to learn. I am envious of the students at Lincoln who are embarking on that journey of discovery.”

Chris Packham, Visiting Professor

Our International Community

Each year, the University of Lincoln is delighted to welcome a growing community of postgraduate students from all over the world. With staff and students from more than 100 countries, we represent a diverse and inclusive academic community that encourages a forward-thinking global perspective.



Located in the heart of England, the University provides a stimulating and supportive environment for students from around the world. We know that while it is exciting and rewarding to study in another country, it can also be challenging at first. Our support begins before you arrive in the UK and continues throughout your time with us.

Before You Arrive

Choosing where to study is an important decision and our dedicated International Office is here to answer any questions you may have, from advice and guidance on choosing the right course for you and the application process, to the UK academic culture and what life is like as a student here in Lincoln. The team holds online question and answer sessions and frequently attends events around the world, providing you with the opportunity to speak to someone in person in your home country and find out more about the University.

Dates of our visits are available on the country pages of our website at www.lincoln.ac.uk/yourcountry.

The University's Virtual Open Day can help you get a feel for what living and studying in Lincoln might be like. Explore our campus and take a look at what the wider city has to offer. Find out more by visiting our website at www.lincoln.ac.uk/vod.

To help make postgraduate study more accessible and affordable, we offer a range of country-specific scholarships. The amount of scholarship available may vary depending on your intended programme of study, nationality, and academic background. Find out more about our full range of scholarships, including application requirements and deadlines, on our website at www.lincoln.ac.uk/internationalscholarships.

There can be a lot to think about when preparing for your move to the UK. We stay in regular contact with all of our offer holders until they join us here in Lincoln to support them along the way, from explaining their offer and important deadlines, to pre-departure information and useful guides to the city and our student experience.

When You Arrive

The University of Lincoln is ready to support you as soon as you arrive in the UK. Our Student Support team offers a free pick-up service for students landing into London Heathrow on specific dates. For more information, including dates of the pick-up service and how to book, please see our website.

When you arrive at the University, our team of staff and students is on hand to welcome you and help you make the most of your time here. They can offer help and advice, orientation talks, and tours of the

city to help you feel at home. You can also talk to our dedicated International Advice team situated in the University's Student Support Centre. They will be happy to provide advice and guidance on a range of topics.

We appreciate that the teaching, learning, and assessment style in the UK can be very different from other countries. The University's English Language Centre can help you to understand the UK academic culture, improve your spoken and written English, and provide opportunities to socialise with other students from around the world.

Joining the International Student Association (ISA) through the Students' Union can be an excellent way to meet people outside of your course, learn about different cultures, and have fun. The ISA organises social events and activities throughout the year for



international students, as well as campaigning on matters that affect them. As always, the aim is to give our international students the best experience possible.

"I'm so happy that I chose the University of Lincoln over other UK universities. It has the best of everything for students and is a place that connects to the heart in a very magical way. I had the best education, and the best experience of my life to create unforgettable memories."

Duaa Al-Jdoa
MSc Human Resource
Management graduate, Jordan

Further Information:

International Office
T: +44 (0)1522 308108
E: internationalenquiries@lincoln.ac.uk
W: www.lincoln.ac.uk/international

Supporting You on Your Journey

The University of Lincoln provides a network of specialist services to support you throughout your postgraduate journey and help you make the most of your time with us.

During your studies at Lincoln you will have the support of your academic tutor, but we understand that there may be times when you need a little extra assistance. That's why we offer a wide range of support and advice services for both personal and academic matters, to meet the needs of our diverse student community. These include wellbeing, counselling, advice and guidance, and support with specific learning differences, mental health, and medical conditions.

Situated at the heart of our Brayford Pool Campus, the Student Support Centre brings many of these services together, providing a central point of contact that can link you with the appropriate team. They offer free, impartial, and confidential advice and information on an array of topics, from fees, funding, and making payments, to housing, visas, and legal advice.

Health and Wellbeing

The health and wellbeing of our students is of utmost importance to us. As soon as you have enrolled at the University, you will be able to register with our on-campus Health Centre which specialises in students' health and offers appointments with both doctors and nurses. Alternatively we can provide you with the details of other GP practices based within the city.

You can also seek the specialist advice of professional staff in our Student Wellbeing Centre. The team includes student wellbeing advisors, mental health advisors, and counsellors who can provide advice and guidance in relation to disability, medical conditions, learning differences, and mental health.

Sometimes you may just want to talk to someone and, regardless of your faith, the University Multi-Faith Chaplaincy Service is here to listen. Whether you have good or bad news to share, or simply want to talk through issues surrounding work, study, or relationships, you can talk to our team of chaplains and faith advisors.

Academic Support

At the heart of student life is the University's Great Central Warehouse Library which provides access to more than 250,000 journals and 400,000 print and

electronic books, as well as databases and specialist collections. It is open 24/7 for the majority of the year and expert staff are on hand to help you navigate resources and support you with academic writing, statistical analysis, and referencing. Practical support through drop-ins, workshops, and individual appointments is available.

Postgraduate students undertaking a research programme can also benefit from the tailored support and training provided by the University's Doctoral School, which offers a comprehensive Researcher Development Programme to help students with research skills, communications, writing and publishing, and career progression.

If you are joining us from overseas you may find that the teaching, learning, and assessment style in the UK is very different from that of your home country. The support provided by the English Language Centre can help you understand the UK academic culture, improve your spoken and written English, and help you succeed on your course while meeting and socialising with students from around the world.

Students' Union Services

In addition to the University's support network, as a postgraduate student you will automatically become a member of Lincoln's Students' Union and will have access to their independent Advice Centre. This offers free, professional, and impartial guidance on a range of academic, housing, financial, and welfare issues, such as assessment appeals, mitigating circumstances, housing complaints, and debt. You can also join any of its sports clubs and societies to meet people and make friends.

Further Information:

Student Support Centre
T: +44 (0)1522 837080
E: studentsupport@lincoln.ac.uk
W: www.lincoln.ac.uk/studentsupport

Your Postgraduate Career

A postgraduate degree from the University of Lincoln can make a real difference to your future.

Postgraduate study is not just the preserve of recent graduates wanting to set themselves apart in the jobs market. Those looking to change or develop their career can also look to further study to help them progress.

A postgraduate course can further your skills and knowledge in your chosen field, and is an excellent way to enhance your prospects. Not only does a postgraduate qualification help you to stand out from the crowd, but it also shows your commitment and dedication.

In an increasingly competitive global economy, many employers are looking for candidates who can demonstrate an enhanced level of competency and critical thinking skills, both of which can be developed through postgraduate study.

Careers Support

The University of Lincoln aims to provide a supportive environment for postgraduate students, helping you to build the knowledge and skills you need to develop your career and create a successful future. Our Careers and Employability team includes qualified advisors who can provide tailored individual support and careers advice throughout your time at the University, and support for 15 months after you graduate.

With bespoke and in-depth expertise and knowledge of the graduate labour market, the team offers one-to-one support and guidance to help you find the right path, as well as CV advice and interview preparation. The team works closely with local, national, and international employers, and advertises a range of graduate positions around the UK, which can enable your journey into the world of work.

Start Your Own Business

Students who are interested in setting up their own business can take advantage of the University's award-winning business incubation centre, Sparkhouse. The centre offers new and expanding businesses the environment they need to grow and succeed, whether through a physical or virtual tenancy, access to training workshops and expert guidance, or opportunities to network with like-minded entrepreneurs. The dedicated Business Incubation team also provides a mentoring service, advice on business planning, funding, and finance, and market research to help you plan, launch, and grow your new business.

Lincoln's Postgraduate Alumni

University of Lincoln graduates have gone on to successful careers around the world. All of our graduates become part of our global alumni community with access to a wide range of services and benefits. Find out more on our website at www.lincoln.ac.uk/alumni.



Vicki Phillips, Doctorate in Education, leading educationalist

Vicki Phillips was named winner of the British Council Alumni Awards 2017 for her exceptional contribution to creating positive change and improving the lives of others. Vicki has dedicated her career to widening access to learning for children in some of the world's most deprived neighbourhoods. As Director of Education at the Bill and Melinda Gates Foundation, she ran the College Ready Programme for eight years. Vicki is now Chief Education Officer for the National Geographic Society.

Imogen Napper, MSc Biotechnology, Sky Ocean Rescue Scholar

Imogen is currently a Sky Ocean Rescue Scholar and a National Geographic Explorer, with her research effecting behavioural change to prevent more plastic finding its way into the world's oceans. Outraged by polluted beaches she witnessed on the Surf Society trips during her undergraduate degree, Imogen was determined to help drive environmental change. Imogen has presented her research internationally at conferences and has received significant media attention across major newspapers and TV networks.



Sebastian Cox, MA Design, furniture designer

Award-winning furniture designer Sebastian Cox developed his unique style at the University of Lincoln and has showcased work commissioned by Sir Terence Conran. He was asked to create a bespoke item of furniture to exhibit as part of *The Wish List* installation, held at London's Victoria and Albert Museum in September 2014. Sebastian is recognised as a pioneer of sustainable design in Britain.

Fees and Funding

There are more ways than ever before to fund your postgraduate study, whether you are new to Lincoln or one of our graduates.

Tuition Fees

Postgraduate study is an investment in yourself and your future, but it's important to understand the costs involved and the funding options available as you will need to have funding in place before you arrive. At Lincoln, tuition fees can be paid in full or by instalments.

Our fees vary depending on the course, mode of study, and whether you are a UK, EU, or international student. Some of our programmes may also have additional study costs for materials and field trips. Please see the individual course pages on our website for specific details.

Funding Options

Loans

You may be able to apply for a loan of up to £10,906* as a contribution towards your postgraduate Master's course and living costs if you:

- are under 60 years old at the start of the first academic year of the course
- ordinarily live in England
- don't already have a Master's degree or higher qualification.

EU students may also be able to apply for the loan. If successful, the loan is paid into your bank account in three instalments during the academic year if you are studying on a one-year full-time course.

The UK Government also offers doctoral loans of up to £25,700* for students enrolling onto full-time PhDs and equivalent postgraduate research programmes. For the latest information, please visit our website

at www.lincoln.ac.uk/postgraduatestudy/feesandfunding.

Scholarships

The University of Lincoln believes financial background should not be a barrier to postgraduate study. To help students fund their studies, it offers a range of merit-based, subject-specific, and country-focused scholarships for UK, EU, and international students. This includes our Alumni Scholarships which can reduce fees by up to 20 per cent for UK and EU students. To find out more about the scholarships available at the University, please visit our website at www.lincoln.ac.uk/scholarships.

Disabled Students' Allowance

If you have a disability, including a mental health condition or specific learning difficulty such as dyslexia or dyspraxia, you may be entitled to a Disabled Students' Allowance. This does not have to be paid back. For further information visit www.gov.uk/disabled-students-allowances-dsas.

More Information

For further information on the financial support available, and the latest terms and conditions for all scholarships and bursaries, please visit our website at www.lincoln.ac.uk/pgfees. Please see our dedicated website adviceservice.lincoln.ac.uk for guidance on student funding and a range of other student support.

*This figure relates to 2019/2020 entry. At the time of print (September 2019) the 2020/21 figures were still to be confirmed. Please visit our website for the latest information.



Applying to Lincoln

Once you've chosen the right programme for you, you can make an application to the University of Lincoln via our website. Follow our step-by-step guide to submit your application.



1. Find your course

Explore the postgraduate programmes available at the University of Lincoln on our website at www.lincoln.ac.uk/findacourse. Detailed information about the course, including the entry requirements, is available on the individual course pages.

2. Check your eligibility

Before applying, check that you meet the entry requirements for your chosen programme, including any additional requirements. These may include an Enhanced DBS Check or health assessment.

3. Prepare your supporting documents

Alongside your application you will need to include:

- A personal statement that tells us why you want to undertake your chosen programme, how you meet the skills and experience required for postgraduate study, and how the course will support your future career aspirations.
- Two references, one of which must be able to comment on your academic abilities.
- Copies of completed qualification certificates and transcripts. If a qualification has not been completed at the point of application, an offer may be made subject to receiving confirmation of your final results.
- Evidence that you meet our English language entry requirements where appropriate.

4. Compose your research proposal

If you are applying for a research programme, you will need to draft a research proposal which provides an overview of the topic or theme you intend to research.

5. Complete and submit your application

To submit an application, click the 'Apply Online' button on the webpage of your chosen course. You will need to register before you proceed. Once you are happy with your application and you have uploaded all the supporting documents, you can click submit.



If you have any questions during the application process, or if you are unable to submit your application online, please contact our friendly Admissions team who will be happy to help.

Please note that applications for PGCE courses should be directed to our partner schools in the first instance. The details can be found on the PGCE course pages of our website. Following successful completion of this stage, applications should be made through the UCAS Teacher Training system. Our PGCE team can offer advice and support if you need it. Contact the team on **+44 (0)1522 886236** or email educationenquiries@lincoln.ac.uk.

"Receiving my PhD opened a lot of doors for me, especially due to the great reputation of the lab that I worked in. My primary supervisor was always happy to talk to me about my career goals and how to achieve them, and even helped me with applications for jobs in the field."

Anna Frohnwieser,
PhD Life Sciences student

Further Information:

Admissions team

T: +44 (0)1522 886097

E: admissions@lincoln.ac.uk

Entry Requirements

Before applying, it is important to ensure that you meet all the necessary entry requirements. While these vary by programme, we've summarised some of the typical entry requirements for the various award levels below.



Postgraduate Certificates and Diplomas

- ✓ An honours degree or equivalent qualification
- ✓ Or other relevant qualifications together with appropriate, related experience
- ✓ Or substantial related experience, which demonstrates the appropriate knowledge and skills to undertake the proposed programme.

Taught Master's Degrees

- ✓ An honours degree or equivalent qualification
- ✓ Or a postgraduate diploma or professional qualification, recognised as being equivalent to an honours degree
- ✓ Or other relevant qualifications or experience which demonstrate appropriate knowledge and skills to study at postgraduate level.

Research Degrees

- ✓ A first or second-class honours degree or an equivalent qualification
- ✓ Or a qualification which the University has deemed equivalent to an honours degree
- ✓ Or a postgraduate or Master's-level degree from a recognised UK university, or the Council for National Academic Awards, or equivalent as recognised by the University of Lincoln.

English Language Requirements

- ✓ International applicants should have the national equivalent of UK entry requirements and proof of proficiency in English (e.g. IELTS). For specific details on English language requirements, please visit www.lincoln.ac.uk/englishrequirements.

Advanced Entry via Accreditation of Prior Learning (APL)

- ✓ The University offers the opportunity for advanced entry using credit awarded for previous achievement, both through formal study and knowledge, and through skills acquired through life and work. To discuss Accreditation of Prior Learning (APL), please contact our Admissions team on +44 (0)1522 886097.

Specific Entry Requirements

Specific entry requirements for courses are detailed on individual course pages of our website at www.lincoln.ac.uk.

If you would like to discuss your suitability for any of our programmes, please contact the academic listed on the relevant course page.

Important Information

We want you to have all the information you need to make an informed decision when you are considering applying for a postgraduate programme.



Every effort has been made to ensure information in this prospectus is correct at the time of publication (September 2019). For the most up-to-date information, please see our website at www.lincoln.ac.uk.

To help you choose the course that's right for you, we aim to bring to your attention all the important information you may need. As well as reading this prospectus and visiting us at a Postgraduate Open Day, we would encourage you to visit our website, particularly our course pages, where you can access the most comprehensive and up-to-date information. This includes typical contact hours, a comprehensive list of core and optional modules for taught programmes, areas of study for research programmes, modes of delivery, a breakdown of assessment methods, entry requirements, and details of fees and any additional costs you may incur.

Modules and Areas of Research

The modules which are currently being delivered for each taught course are listed in full on our website. In addition to the core modules all students on the course must study, there may be a range

of optional modules which enable you to tailor your degree to your interests. Optional modules run dependent on demand and the availability of staff and facilities to teach them. The options for areas of research for research programmes are also listed on our website, detailing the studies and partnerships in which our academics are currently involved.

Validation / Revalidation

We want to ensure that the programmes we offer are relevant and reflect changes in subject areas and developments in industry. To do this, we may introduce new courses or update existing ones. The process of approving the new or updated content is known as 'validation' or 'revalidation'. Please refer to the website for the latest on a course's validation status.

Staffing

During your studies you may be taught by a range of academics,

including lecturers, demonstrators, technicians, senior lecturers, professors, practitioners, and visiting experts. You may also be supported in your learning by other students. You can find out more about the staff involved in teaching on our website or at one of our Postgraduate Open Days.

Contact Hours

Owing to the nature of postgraduate research programmes, a significant proportion of your time will be spent in independent study and research. You will have meetings with your academic supervisors, however, the regularity of these will vary depending on your own individual requirements, subject area, staff availability, and the stage of your programme. For taught programmes, weekly contact hours may vary depending on the individual module options chosen and the stage of study.

Methods of Assessment

The way you will be assessed on your course will vary depending on the subject and the type of postgraduate programme you select. A taught programme could include a written dissertation, exams, presentations, and projects. A research programme could include a thesis, oral examination, and presentation to a group of research academics. You may be expected to demonstrate how your research findings have contributed to knowledge or developed existing theory or understanding. Please visit the programme webpage to find out more.

Awarding Body

All degrees are awarded by the University of Lincoln, which is regulated by the Office for Students.

Research Fees

The University of Lincoln sets its fees in line with the UK Research and Innovation (UKRI) research

fee support level. For UK students commencing in the 2020/21 academic year this will be set in early 2020. The indicative fee level from UKRI for 2019/20 is £4,327 plus inflation. In 2019 European students were eligible for funding under UKRI support for postgraduate training. At the time of going to print, the UK government has not confirmed whether EU nationals will remain eligible for research council studentships for the 2020/21 academic year on the same basis.

Research Support Fees

Research students may be required to pay Research Support Fees (commonly known as 'Bench Fees') in addition to the standard tuition fee published by the University. This covers a wide variety of items or activities which are essential to carry out the research, including project costs, the cost of specialist resources, equipment or materials, travel and conference attendance,

books and laptops, as well as access to any specialist collections that may be required to support research projects. These will be informed by the research proposal submitted and will be calculated on an individual basis.

Research Support Fees normally apply to science-based courses. However, please get in touch with the department you are applying to if you wish to discuss this prior to application. Any additional fees will be outlined in your offer letter, prior to accepting your place.

Additional Costs

In addition to the Research Support Fee, there may be additional costs such as materials for arts-based courses or field trips. If a work placement or trip forms part of your study, you will be required to fund any associated transport or travel costs. Please visit our website for more information.



Our Colleges

The University of Lincoln provides a challenging and supportive environment in which to undertake postgraduate study or research. We offer a range of taught programmes and research opportunities across four academic Colleges.

The College of Arts

The College of Arts offers a vibrant and collaborative environment for those wishing to further their career or pursue their passion in the arts.

Links with professionals across the creative industries offer students the opportunity to benefit from real-world expertise through masterclasses and guest lectures. Current collaborators include the former Poet Laureate Dame Carol Ann Duffy; naturalist,

TV presenter, and author Chris Packham; art historian and journalist Andrew Graham-Dixon; and science and technology expert Jason Bradbury.

Inspirational learning spaces encompass specialist studios, labs, workshops, newsrooms, and print and digital archives.

The College of Science

The College of Science provides a diverse and vibrant postgraduate

portfolio with research-informed courses designed to produce the highly skilled individuals needed across a range of industries.

Science students have access to specialist facilities in which to advance their knowledge and research, including the £28 million Isaac Newton Building and the Joseph Banks Laboratories, located at the Lincoln Science and Innovation Park.

Academic staff undertake world-leading and internationally excellent research, offering students the opportunity to learn from some of the finest thinkers in their field. Researchers are working at the forefront of their disciplines, from pioneering research to develop more effective treatment for thousands of cancer sufferers, to ground-breaking studies into climate change and meteorology.

The College of Social Science

Students join a research-rich environment in the College of Social Science where employability is central to the postgraduate portfolio.

Strong links to industry can enable students to gain relevant vocational experience to enhance or prepare for careers throughout the social sciences. The Work Opportunities Hub is available to support students who wish to enhance their studies by engaging in practical work experience, whether it is part of their programme, or as an activity during term-time or the holidays.

Students have access to inspirational learning spaces including specialist laboratories for psychology, the purpose-built Human Performance Centre for sports, and state-of-the-art clinical suites for health and social care in the £19 million Sarah Swift Building.

The Professional Development Centre offers continuing professional development courses for qualified practitioners in a variety of sectors including nursing, care, teaching, social work, emergency services, medicine, and the third sector.

Lincoln International Business School

Lincoln International Business School is culturally diverse, internationally-minded, and committed to providing an educational experience that enhances careers.

A number of Master's programmes are accredited by professional bodies including the CIPD for Human Resource Management; CIMA,

ACCA, and AIA for Accounting and Finance; CILT for Logistics and Global Operations; and ICSA: The Governance Institute for MSc Governance.

Teaching staff are engaged in their own research and students can benefit from Lincoln's strengths in several areas of academic expertise. The School is currently involved in a €3.7 million research project on European business innovation. This project focuses on examining the roles that universities play in regional innovation, and assesses how universities build and maintain links with industry.

Lincoln International Business School also offers executive development programmes, courses tailored for the military, and work-based distance learning opportunities.



Discover
Your Future...

Architecture and the Built Environment

Moving beyond the beauty of our built environments, architecture at Lincoln reflects today's growing need to design and build socially, economically, and environmentally sustainable structures.

Taking an integrated approach that brings together architecture, and construction science and management, our postgraduate programmes have been developed to address tomorrow's design and construction challenges in both national and international contexts.

Providing distinct pathways, our taught and research-based programmes enable graduates and mid-career professionals to develop the knowledge and skills they need to further their careers and operate effectively within a globalised, innovation-driven economy.

Course content is informed by current trends and developments in architectural practice and the construction sector, utilising industry-standard equipment and technologies. Our professional courses in Architecture are validated by the Royal Institute of British Architects (RIBA) and prescribed by the Architects Registration Board (ARB), while our Construction Science and Management programmes have been designed around the Chartered Institute of Building academic framework.

Students can make use of a range of bespoke spaces and facilities, including specialist laboratories and workshops to employ traditional model-making techniques and digital fabrication technologies. They can also make use of the Rapid Prototyping Suite for the production of complex three-

dimensional forms, and industry links with local architecture practices and organisations in the construction industry.

Those undertaking research programmes have the opportunity to work with academics to advance architectural and constructional knowledge and address the emerging issues facing professionals in the sector. Research topics span three overlapping areas in sustainable environments; culture, society, and space; and construction science.

Courses

MArch Architecture

MArch Architecture (International Practice)

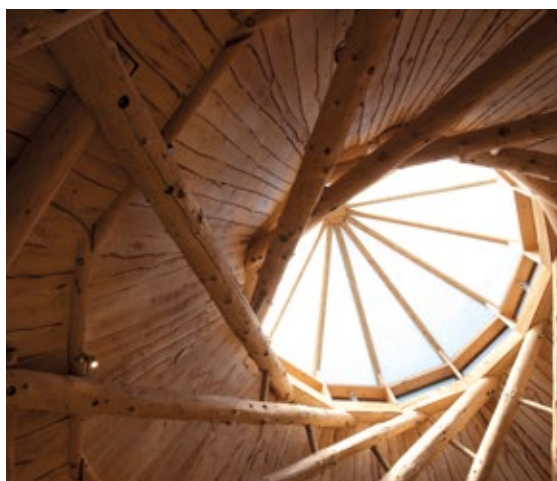
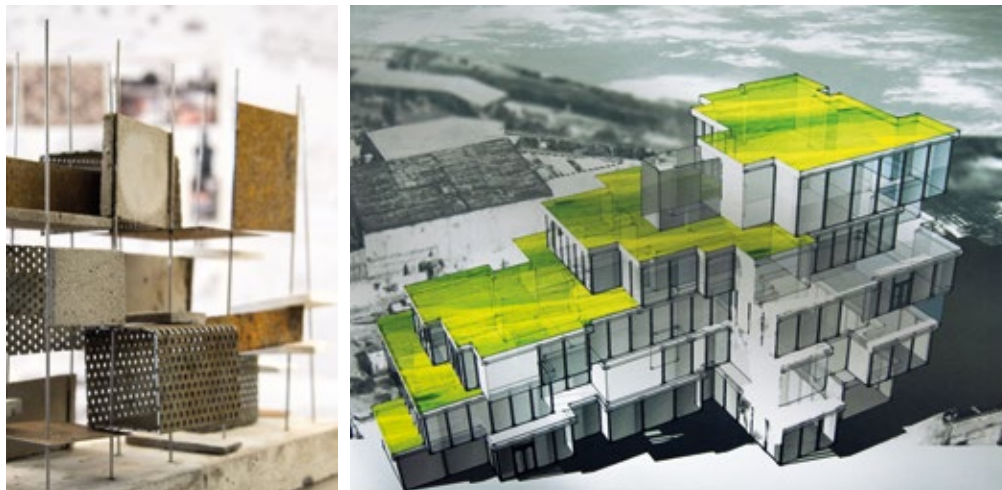
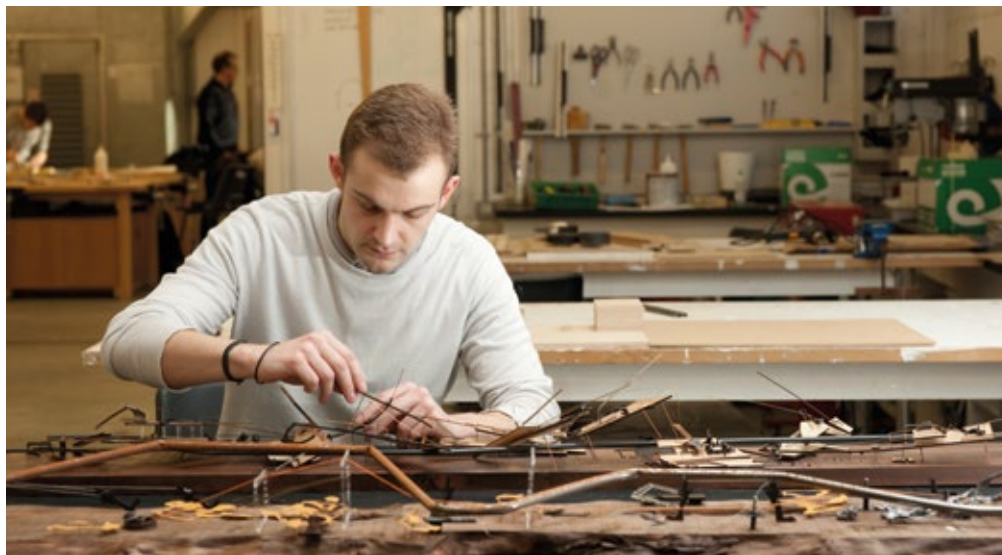
MPhil/PhD Architecture

MSc Construction Science and Management

MPhil/PhD Construction Science and Management

MA Interior Architecture and Design

PGDip Professional Practice and Management in Architecture



Art and Design

Art has the power to stir emotions, express ideas, and encourage new ways to think about how we live, work, and create. At Lincoln, students can explore the arts and learn how to hone their craft at the highest level through an interdisciplinary approach.

The University of Lincoln offers a range of postgraduate courses across the arts, including taught and research-based programmes in art, design, fine art, and interior architecture and design. Combining creative practical work with critical research and professional practice, art and design students can experiment with different media and develop their artistic style in a stimulating and supportive environment.

Students join a community of creative practitioners and researchers, with opportunities to collaborate with fellow artists and designers and build a network of industry contacts. They are able to make use of state-of-the-art studios and specialist workshops, alongside the latest computer suites, 3D printers, rapid prototyping, laser cutting resources, and wood, plastic, resin, plaster, and metal working equipment.

The Centre for Art and Design Research is the home for practice-led, historic, and theoretical research of art and design subjects at the University of Lincoln. Managed by a committee of academics from various schools across the University's College of Arts, it provides support to academic staff and research students, and encourages discourse and collaborations in a cross-disciplinary environment.

Students are able to work closely with our academics, who conduct internationally recognised research and are engaged in a wide range of specialisms that cover contemporary and historic perspectives along with social and cultural developments. In addition to the programme, students are

able to supplement their learning with visits to local galleries, exhibitions, and archives throughout the city of Lincoln. They are also able to enjoy the regular programme of industry talks from visiting artists at the University.

Courses

MA by Research Art

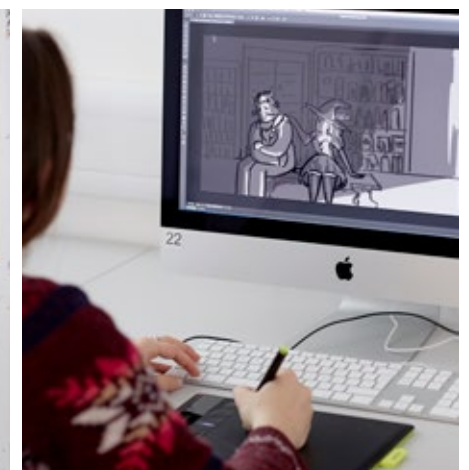
MPhil/PhD Art

MA Design

MPhil/PhD Design

MA Fine Art

MA Interior Architecture and Design





Business, Finance, and Management

The University of Lincoln offers business leaders, policymakers, and those starting out in their careers the chance to create successful futures, facilitating leadership and management development through inspiring postgraduate education and consultancy.

Those undertaking studies in business and management become part of Lincoln International Business School, a culturally diverse and internationally-minded community of practitioners and academics who are committed to making a difference to society.

At Lincoln, we offer a range of taught and research postgraduate programmes over four key areas: accountancy, finance, and economics; marketing and tourism; people and organisations; and strategy and enterprise.

Our students are able to benefit from academic expertise combined with industry experience, and can take advantage of the University's links with companies such as Siemens, Santander, HSBC, and Deloitte. They are able to attend guest lectures from industry experts and network with local businesses and academics at the School's LIBS Connect events.

A number of our Master's programmes are accredited by professional bodies, including the CIPD for Human Resource Management and CIMA, ACCA, and AIA for Accounting and Finance. MSc Logistics and Global Operations is accredited by CILT, while MSc Governance is accredited by ICSA: The Governance Institute.

Some programmes provide the opportunity to gain valuable work experience by undertaking a consultancy or client-based

project. Projects bring students and client organisations together to help identify and present solutions to business issues. This gives students the chance to develop core business skills while working for real-world organisations.

For experienced professionals who need to upgrade their operational skills and gain a degree in management, our online 'top-up' programmes are designed to interface with their role, enhance work-based projects, and can be completed from anywhere in the world within 13-24 months.

We also offer a range of military programmes designed to allow serving members of all three services, as well as their civilian colleagues, to achieve academic recognition from their extensive work experience and formal training.

All students can engage with our active research groups who work with professional and academic organisations both locally and globally to develop research knowledge for business success. Areas of specialism include marketing and supply, visitor economy, regional and community organisations, innovation and enterprise, and responsible management.

Courses

Accountancy, Finance, and Economics

MSc Accounting
MPhil/PhD Accounting
MSc Accounting and Finance
MPhil/PhD Economics
MSc Finance
MPhil/PhD Finance
MSc Governance
MSc International Business Economics
MSc International Investment Banking

Marketing and Tourism

MSc Crisis and Disaster Management
MA Culture and Heritage Management
MPhil/PhD Culture and Heritage Management
MSc Events Management
MSc Fashion Management
MSc International Hospitality Management*
MSc International Tourism Management
MSc Marketing
MPhil/PhD Marketing
MSc Marketing with Luxury Brands
MPhil/PhD Tourism
MSc Tourism and Marketing

People and Organisations

MSc Human Resource Management
MPhil/PhD Human Resource Management
MSc Management
MPhil/PhD Management
MSc Management and International Relations
MSc Project Management

Strategy and Enterprise

MSc International Business
MBA Leadership
MPhil/PhD Leadership
MSc Logistics and Global Operations
MPhil/PhD Logistics Management
MBA Master of Business Administration (full-time)



Chemistry and Forensic Science

Chemistry and forensic science subjects at Lincoln bring together research-active academic staff and students in a vibrant research-driven environment to develop new chemical innovations and the chemists of the future.

Our programmes combine fundamental research with a strong focus on industry, working with companies to address real needs. Chemists play a key role in tackling global challenges, such as energy production, health and wellbeing, food security, and the use of natural resources, while forensic scientists are integral to the justice system, providing impartial evidence in criminal investigations.

We offer opportunities for taught postgraduate study across a range of areas, including analytical sciences, energy materials and battery science, forensic science, forensic toxicology, and nanoscience. Our programmes have been developed in partnership with regional and national chemical science companies and organisations. This helps to ensure that our teaching is current and relevant while providing opportunities for students to engage with employers.

Students undertaking research programmes are able to work alongside research-active academics who are specialists in their area. The team's research activity focuses on the synthesis, characterisation, and application of functional materials, with researchers collaborating with staff from across the University in areas including pharmacy, life sciences, engineering, and food science.

Students undertaking studies in chemistry have access to specialist equipment in the University's Joseph Banks Laboratories and Janet Lane-Claydon Building, including high-specification instrumentation for spectroscopy, diffraction, imaging, and

separation science. The facilities enable them to develop their expertise in nuclear magnetic resonance, mass spectrometry, chromatography, electron microscopy, and X-ray diffraction.

Students specialising in forensic science are also able to access the University's 'crime scene house' which is designed to mimic a range of domestic incidents. It enables students to develop skills in a variety of indoor and outdoor scenarios while being recorded by CCTV for feedback and assessment.

Courses

MSc Analytical Sciences

MSc by Research Chemistry

MPhil/PhD Chemistry

MSc Energy Materials and Battery Science

MSc Forensic Science

MSc by Research Forensic Science

MPhil/PhD Forensic Science

MSc Forensic Toxicology

MSc Nanoscience*





Computing

With society in the midst of a digital revolution, from the smartphones we use to navigate our daily lives to the advances in artificial intelligence set to transform global industries, those with the skills to drive forward developments in computing and information systems will be increasingly valued by employers.

At the University of Lincoln, postgraduate teaching in computing is underpinned by world-leading research in areas including computer vision and image engineering; machine learning; data science; artificial intelligence; and robotics and autonomous systems. From optimising the treatment of cancer patients to spearheading the development of next generation robots for agri-food production, computer scientists at Lincoln are working at the forefront of new technologies.

Our academics' expertise and diverse experience ensures that our programmes are designed to prepare graduates with the skills and mindset required in the industry they hope to work in. Taught postgraduate courses are available in computer science, games development and design, intelligent vision, and robotics and autonomous systems.

Those wishing to pursue a research programme can benefit from a comprehensive programme of training designed to develop key research skills and methodologies. A supervisory team of experienced academics is available to provide guidance in publishing work in journals and presenting at conferences. Their work is a blend of fundamental, applied, and interdisciplinary research, with particular strengths in computer vision, robotics and autonomous systems, human-computer interaction, data science, and machine learning.

Students undertaking studies in computing can benefit from specialist facilities available in the University's £28 million Isaac Newton Building, with technical resources including computer laboratories and workstations with full software development platforms. There is a range of equipment for loan, including Raspberry Pi devices, smartphones, robots, and virtual reality equipment such as HTC Vive and Oculus Rift. Research students have access to industry-standard equipment and software to aid their investigations, including embedded system development and simulation platforms.

Computing at Lincoln offers the opportunity to join an exciting, thriving, and expanding environment in which to study and develop, with the chance to learn from and work alongside academic staff who are leading the way in developing the technologies needed to address the challenges of tomorrow.

Courses

MSc Computer Science

MSc by Research Computer Science

MPhil/PhD Computer Science

MSc Games Development and Design

MSc Intelligent Vision

MSc Robotics and Autonomous Systems

Criminology, Politics, and Social Science

At Lincoln, we combine high quality teaching and learning with multidisciplinary research across criminology, politics, international relations, social policy, and sociology.

We offer a range of taught postgraduate programmes in specialist areas covering politics, criminology and criminal justice, international relations, and gender studies, as well research opportunities across the breadth of the social and political sciences.

Students are able to work alongside research-active academics, and postgraduate research projects are informed by the expertise of our team, many of whom have long-standing links to industry, government, research organisations, and the voluntary sector. There are opportunities across a range of topics in the social and political sciences, with current specialisms including gender and violence, police culture, and democracy and human rights in Africa.

For both taught and research students, there is an emphasis on advanced research methods which can help them to hone their research skills with the aim of becoming confident researchers in their own right. Students can access a programme of research training and may have opportunities to contribute to a seminar series, attend conferences, and present and publish their work.

Some of our postgraduate programmes present students with the chance to supplement their studies by participating in field trips to key international organisations. In recent years, those studying Politics have

visited New York, Washington D.C., Brussels, and The Hague. Participating students are responsible for covering their own travel, accommodation, and living costs.

The University has close links with organisations such as Addaction, Lincolnshire Probation Trust, HMP Nottingham, the Fraud Investigation Service, and the National Police Improvement Agency, and welcomes representatives from these organisations alongside others to deliver guest lectures throughout the year.

Courses

MPhil/PhD Criminology

MA Criminology and Criminal Justice

MA Gender Studies

MA International Relations

MPhil/PhD International Relations

MA Politics

MPhil/PhD Politics

MPhil/PhD Social Policy

MPhil/PhD Social Sciences





Dance, Drama, and Music

Intrinsically woven into our culture, dance, drama, and music have been vital forms of self-expression for centuries. Today, as performances become more accessible to a wider audience, the way performance is presented offers new opportunities for scholarship and innovative thinking.

At the University of Lincoln, we offer a range of postgraduate programmes covering the breadth of the performing arts, from taught programmes in Music, Theatre, and Theatre for Young Audiences, to research-based programmes in Drama and Performing Arts.

Students are able to benefit from a blended approach to their learning, linking the academic study of the arts with the practical and creative disciplines of technique, performance, and production. They are able to explore a variety of genres and influential playwrights, musicians, or choreographers, and develop their own style of performance.

Those undertaking study in dance, drama, and music can make use of a range of bespoke spaces and resources in the Lincoln Performing Arts Centre – a £6 million, professional theatre based on campus. The centre provides a hub of creative performance where our students can learn and practise their art in the 450-seat theatre, large industry-standard studio spaces, and a workshop for building sets and props.

The centre is part of a busy arts community and hosts professional performances alongside student productions throughout the year, offering students the chance to be involved with the activities of a modern theatre. Previous performers include the Reduced Shakespeare Company, Ballet Cymru, Chris Goode & Company, Ligeti Quartet, and Paines Plough. The University's semi-professional theatre group, The Lincoln Company, also provides students with the

opportunity to practise their craft.

During their time at Lincoln, students are able to work alongside industry experts who can offer a forward-thinking and conscientious approach to contemporary dance, drama, and music, and get involved in a vibrant and active research culture. Our academics conduct high quality research at an international level, combining traditional scholarship with active professional practice in a variety of areas, including theatre history, composition, ethnographic research, theatre translation, playwriting, musical theatre, live art, somatic practices, digital performance, and applied drama.

Whichever programme is chosen, our practice-led approach and excellent industry links are designed to prepare students for successful careers in the performing arts.

Courses

MA Choreography**

MPhil/PhD Drama

MA Music

MRes Performing Arts (Drama, Dance, Music)

MPhil/PhD Performing Arts

MA Theatre

MA Theatre for Young Audiences

Education

Education professionals play an integral role in the lives of children and young people, inspiring them to learn and preparing them for their future.

At the University of Lincoln, we offer practising and aspiring educators an opportunity to learn within an active community of student and practitioner researchers who are committed to educational studies that make a difference.

Our postgraduate research and taught programmes are for those who want to combine their professional practice with intellectual inquiry, or undertake rigorous research into a focused area of education.

We are fully committed to developing outstanding teachers who are able to make a positive impact on pupils' learning and attainment as soon as they enter the classroom. To achieve this, we work with the Lincolnshire Teaching School Alliance and the St George's Academy Partnership to offer primary and secondary PGCE School Centred Initial Teacher Training (SCITT) programmes, which combine professional practice with educational research.

During the course of their programme, students are able to work alongside academics undertaking studies into how education provision can be improved. Research is structured around two main themes: science and technology education; and critical education studies. Both are supported by specialised research groups which aim to challenge and improve current educational thinking and practice across the learning environment.

Together with our strong academic links and internationally recognised research, postgraduate education courses at Lincoln are designed to provide a solid foundation

for future study or work in academic establishments, offering a real commitment to development and education.

Courses

MA Education

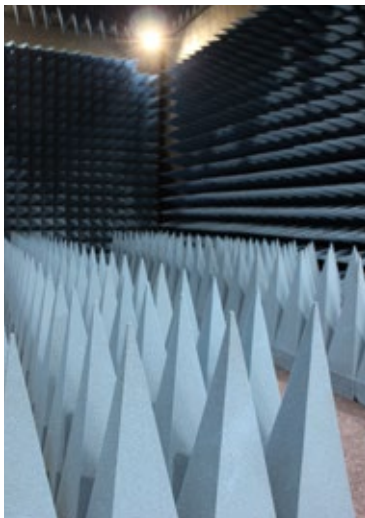
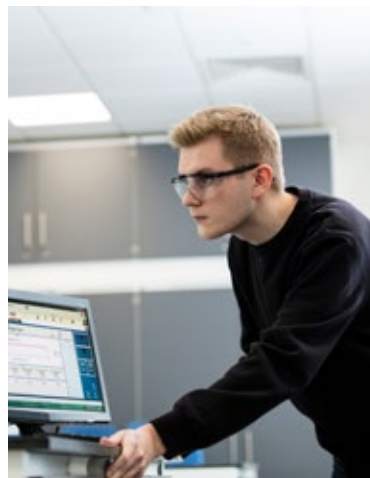
PhD (Professional) Education

MPhil/PhD Educational Research and Development

PGCE Postgraduate Certificate in Education (Primary)

PGCE Postgraduate Certificate in Education (Secondary)





Engineering

Engineers provide the critical link between scientific discovery and the practical application of knowledge to meet the needs of business and society.

At Lincoln, we provide the opportunity to develop the skills, knowledge, and abilities required to meet the significant demands required of the 21st Century professional engineer. Our taught programmes cover the areas of mechanical engineering and engineering management, while our research programmes offer the chance to collaborate with industry on projects that can deliver tangible benefits to the sector and wider society.

Founded in partnership with Siemens, Lincoln's School of Engineering has a core philosophy of research-led teaching, and our status as a Siemens Global Principal Partner offers Lincoln graduates enhanced opportunities for mentoring and recruitment. Informed by the needs of industry, our programmes aim to prepare students to make an immediate contribution upon entering the workplace.

Engineering expertise at Lincoln is centred around the core disciplines of industrial digitalisation and system intelligence, and sustainable energy and power systems. Research students can benefit from the expertise of academics in a variety of areas, including mechanical engineering, combustion engineering, electrical and electronic engineering, control and systems engineering, aeronautical and automotive engineering, and laser materials processing.

Our purpose-built engineering hub was created in collaboration with Siemens and, as a centre of technical innovation, houses industry-standard machinery, turbines, and control and laser laboratories. It forms part of the Isaac Newton Building, providing our engineering students with access to

workshops and computer laboratories, as well as laboratories for acoustics, vibrations, control, and automation.

Highly skilled engineers are in demand in the UK and overseas, and through teaching methods and high levels of employer collaboration, our programmes aim to prepare graduates for careers across this dynamic and challenging sector.

Courses

- MSc by Research Engineering
- MPhil/PhD Engineering
- MSc Engineering Management
- MSc Mechanical Engineering



English, Journalism, and Public Relations

The opportunity to shape our understanding of the world through words, images, and stories is one of the most important skills for the 21st Century.



Students at the University of Lincoln are able to join a rigorous and intellectual community of highly respected academics, award-winning journalists, and leading authors as they embark on their postgraduate journey.

We offer a wide range of taught and research programmes across English, journalism, and public relations, from MAs in 21st Century Literature and International Journalism, to MPhil and PhDs in Creative Writing and English. Many of our programmes are industry accredited by internationally-recognised bodies.

A number of influential speakers regularly visit the University to hold talks and lectures, including former Poet Laureate Dame Carol Ann Duffy. Students can also benefit from strong links with prominent media organisations including the BBC, ITV, and regional newspapers. Our MA Creative Writing and Publishing is delivered in partnership with *The Guardian* while the MA International Journalism was created jointly with the Thomson Reuters Foundation.

We encourage a 'student as producer' approach, enabling students to develop their practical skills in real-life settings. On campus there are opportunities to work with our community radio station, multi-platform website, student newspaper, and television and magazine channels. For those interested in public relations, there is an opportunity to undertake real work experience by participating in the many live projects generated by Cygnet PR, the University's student-run PR agency.

Our facilities reflect those used in industry and include a suite of newsrooms incorporating professional design and print production software. Students who specialise in broadcast and production can access a range of video and audio editing suites and equipment, and digital radio and television studios.

Students undertaking studies in English, journalism, and public relations join a community of research-active academics and industry professionals. By drawing on specialist research interests, postgraduate students at Lincoln can collaborate with staff on a range of innovative and imaginative

projects. Research strengths include 21st Century writing, experimental fiction, gothic literature, literary journalism, and media history.

Courses

MA 21st Century Literature
MA Creative Writing
MPhil/PhD Creative Writing
MA Creative Writing and Publishing
MA by Research English
MPhil/PhD English
MA English Studies
MA International Journalism*
MA Journalism
MA by Research Journalism
MPhil/PhD Journalism
MA Journalism (Arts)
MA Journalism (Digital)
MA Journalism (Science and Environment)
MA Journalism (Sports)
MA Journalism (War and International Human Rights)
MA Public Relations



Food Manufacturing and Agri-food Technology

The world's population is expected to grow to almost 10 billion by 2050, increasing global agricultural demand and putting pressure on farmers and manufacturers to find new technologies to stay ahead in this critically important sector.

At the University's Lincoln Institute for Agri-food Technology and National Centre for Food Manufacturing, staff and students are engaged in impactful research designed to make a difference across the food chain, with a clear focus on improving productivity, safety, quality, efficiency, and sustainability through innovation.

Students can study taught programmes in agri-food technology, covering areas such as crop science, food manufacturing, new product and process development, food safety and technical management, as well as commercial, operational, supply chain, and agile management. Students can further extend their study by undertaking a six-month work placement in industry. This enables them to apply their knowledge and laboratory skills to an extended practice research study in a commercial context.

Those wishing to develop expertise in a particular area of agri-food science or food manufacturing and technology may choose to pursue a research programme, providing the opportunity to consolidate skills in preparation for positions in research development or technology management.

The University is home to the world's first Centre for Doctoral Training for agri-food robotics. The centre aims to develop the next generation of Robotics and Autonomous Systems specialists for the global food and farming sectors. It is supported by industry partners and specialises in areas such as autonomous mobility in challenging environments, the harvesting of agricultural crops, soft robotics for handling delicate food

products, and 'co-bots' for maintaining safe human-robot collaboration and interaction in farms and factories.

Situated just three miles north of Lincoln in a beautiful semi-rural setting, the University's Riseholme Campus is home to the Lincoln Institute for Agri-food Technology. The campus spans more than 200 hectares, incorporating woodlands, parkland, watercourses, and grasslands. It features a working farm and a variety of heritage features, centred around the historic Grade II listed Riseholme Hall.

The University's National Centre for Food Manufacturing (NCFM) is based in Holbeach, in south Lincolnshire. This food manufacturing technology hub provides specialist facilities and industry-standard equipment, including analytical laboratories with a test kitchen and sensory testing suite, a technician training centre, and processing facilities.

Courses

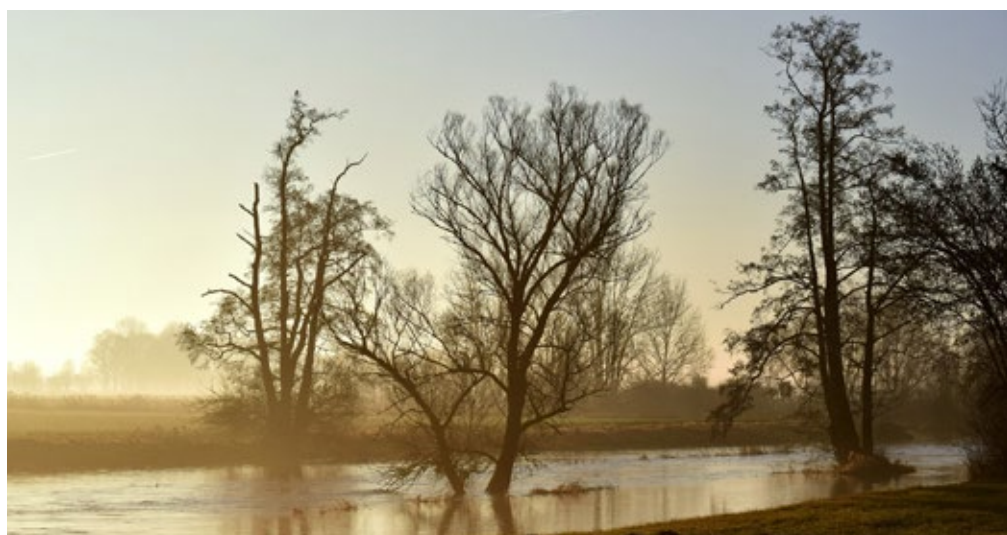
MSc Agri-food Technology

MSc Agri-food Technology (with Professional Practice)

MSc by Research Agri-food Technology

MPhil/PhD Food Manufacturing and Technology





Geography

Geography is an integrative subject that aims to provide the intellectual tools necessary to understand the relationship between human society, the environment, and the challenges we face in the future.

Geography at Lincoln focuses on the inhabited Earth, with particular emphasis on the safety and health aspects of global environments. With most of the world's population now divided between urban centres and rural communities, we also consider social issues such as crime and deprivation, as well as pollution and natural hazards.

Our research programmes offer the opportunity to work alongside academics whose research has been internationally recognised. Researchers include Professor Mark Macklin, whose expertise lies in river systems, global environmental change, and catchment hazard and pollution issues; Professor of Climate Science and Meteorology, Edward Hanna; and Dr Gary Bosworth, Reader in Rural Geography.

Researchers are focused on solving the most pressing global environmental and societal problems. These include climate change; food and water security; hydrological extremes; coastal dynamics; disaster management; urban security and governance; water-related disease and contamination; sustainable communities; environmental history and geoarchaeology; environmental management and behaviour; development studies; social mobility and disparity; migration and demography; and big data analytics.

Our taught programmes are underpinned by expertise in these areas, offering students the opportunity to further their existing knowledge and align their studies with the activities of our research centres and groups, opening up opportunities for progression onto research programmes.

Our courses are designed to develop subject understanding and geographical skills progressively in the context of real-world problems, with the aim of enabling students to apply their learning to contemporary global challenges.

Courses

MA Development and the Environment*

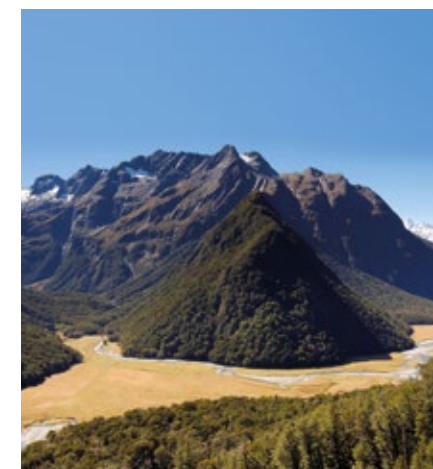
MA by Research Geography

MSc by Research Geography

MPhil/PhD Human Geography

MPhil/PhD Physical Geography

MSc Water and Planetary Health*



Health and Social Care

The UK's population is ageing. In 50 years' time there are likely to be an additional 8.6 million people aged 60 years and over, and the changing nature of the population presents very real challenges for those responsible for health and social care provision.

Whatever form services take in the future, there will always be a demand for confident, highly skilled, and innovative professionals to improve the quality of nursing, social work, and care in the UK and overseas.

At Lincoln, the School of Health and Social Care has established a regional, national, and international reputation for its teaching, research, and broad educational opportunities. We offer students, practitioners, and researchers in healthcare a supportive and research-rich environment in which to study, and provide access to a range of industry-accredited programmes that are designed to develop the skills and knowledge needed in the sector. Programmes are designed for both graduates and practitioners who are looking to develop their skill set.

Those undertaking study in health and health-related programmes can take advantage of facilities in the University's £19 million Sarah Swift Building, including state-of-the-art clinical suites which emulate real hospital environments and feature the latest in patient simulation technology. Adult and infant 'patient' and CPR mannequins have realistic anatomy and functionality to help develop core skills during clinical practice. The replicated ward environment features NHS-standard patient bays, as well as professional equipment and consumables to provide a realistic workspace in which to learn.

The University of Lincoln has strong partnerships with health trusts, local authorities, and private organisations. This enables students to design and deliver real-life projects that are beneficial to service users, and can influence policy, practice, and procedures in health and social care services.

Research students are supported by skilled staff who are active in their field. They can engage in practice research at the University's Lincoln Institute for Health. The Institute is home to multidisciplinary research collaboration and conducts sector-leading studies to develop innovative health and social care technologies and treatments, contributing towards the improvement of health systems. Opportunities are available to work with academics on areas that cover community and health, mental health and wellbeing, and healthy ageing.

For those who seek to improve the lives of others, a career in health and social care can prove most rewarding. Our programmes, research, and facilities are designed to develop the healthcare professionals of the future.

Courses

MSc Advanced Clinical Practice**

MA Advanced Development in Social Work (Erasmus Mundus)**

MA by Research Health and Social Care

MSc by Research Health and Social Care

MPhil/PhD Health and Social Care

MSc Nursing (Pre-registration - Adult)

MSc Nursing (Pre-registration - Child)

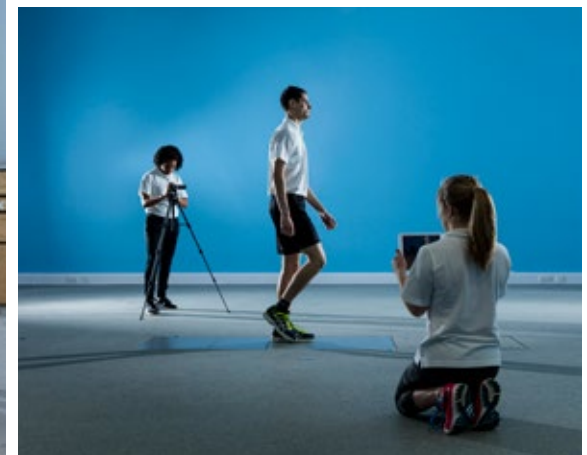
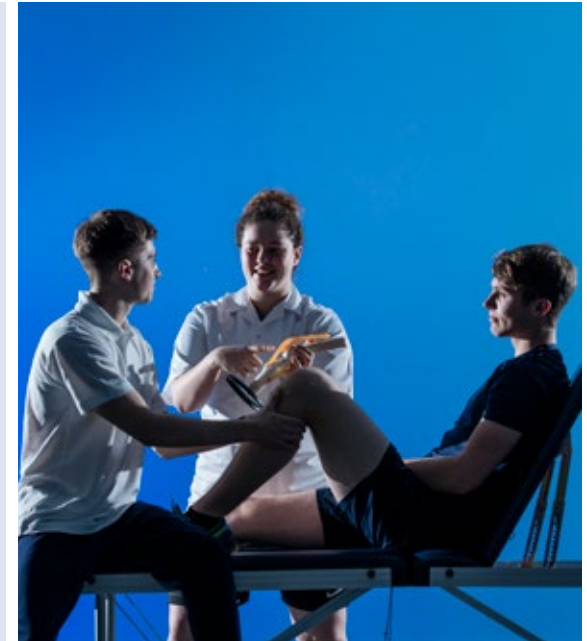
MSc Nursing (Pre-registration - Mental Health)

MSc Occupational Therapy (Pre-registration)

MSc Physiotherapy (Pre-registration)

PhD Practice Portfolio in Health and Social Care

MSc Social Work





History, Culture, and Civilisation

With its magnificent cathedral, a medieval castle, an original of the 1215 Magna Carta, and the International Bomber Command Centre, Lincoln is an inspiring city in which to study history and heritage.

At the University of Lincoln, students are able to explore the past and present through a range of intellectually rigorous taught and research-based programmes in history, conservation, medieval studies, and philosophy. They can develop a range of practical skills within a theoretical framework that centres on their own individual research interests.

Postgraduate students at Lincoln can make use of the excellent facilities and resources available on campus, including the University's Great Central Warehouse Library and Media Archive for Central England, which houses more than 2,000 films and moving images. These are supplemented with impressive resources around the city, including the Tennyson Research Centre based at the Lincolnshire Archives, The Collection museum, the International Bomber Command Centre, and the outstanding collection of medieval manuscripts and rare books housed at the Lincoln Cathedral library.

The University is home to the largest centre for conservation and restoration in the UK, and undertakes a range of projects for high-profile clients including the National Trust, English Heritage, and the V&A Museum. Its specialisms include 3D scanning and digital replication and visualisation; the study, conservation, and reinstatement of historical decorative schemes; and the conservation of historic objects.

Our postgraduate programmes in conservation link the practical skill of preservation with scientific investigation

and analysis. They place an emphasis on gaining hands-on experience in purpose-built laboratories using historical material provided by museums and private collections.

Students undertaking research programmes are able to participate in regular research seminars, enabling them to discuss and debate topics with fellow students, scholars, and visiting academics. They are able to work closely with industry experts, scientists, and historians, benefiting from expertise in a wide range of areas, including medieval history, modern British history, archaeological conservation, culture studies, and analysis of historic materials.

Courses

MA by Research Conservation

MA Conservation of Cultural Heritage

MPhil/PhD Conservation of Cultural Heritage

Graduate Diploma Conservation Studies

MA History

MA by Research History

MPhil/PhD History

MA Medieval Studies

MPhil/PhD Philosophy

Law

The rule of law is the cornerstone of any just and fair society, and to be administered correctly it requires skilled and knowledgeable legal professionals.

The University's Lincoln Law School has a wide-ranging postgraduate portfolio to develop students' legal specialism with tailored courses in international law, corporate and commercial law, and conflict and disaster law.

As the world becomes more connected and geographic boundaries become less important, there is an increasing demand for lawyers with the necessary knowledge of international law and international business law to provide services to clients in both transactional and litigation work. This can include commercial law firms undertaking work for multi-national corporations and those businesses involved in multi-jurisdictional transactions or disputes.

Law students at the University of Lincoln are able to take advantage of the University's excellently resourced Great Central Warehouse Library which has more than 250,000 books and approximately 400,000 electronic books and journals, alongside databases and specialist collections. There are also seminar rooms and a moot court to practise mooting skills.

Students are able to benefit from the expertise of teaching staff, many of whom are research-active and whose interests span international human rights law, international environmental law, and international legal issues. Their work informs teaching at Lincoln, aiming to provide a strong basis for students who wish to follow a career in international law. Many governmental and international organisations, such as the United Nations, require the expertise of those with backgrounds in international law, and international corporate and commercial law.

Our law graduates pursue careers around the world in legal practice or in business, industry, government, non-governmental organisations, and academia. For those seeking academic careers, the LLM programmes we offer provide the grounding for graduates to go on to study for an MPhil or PhD.

Courses

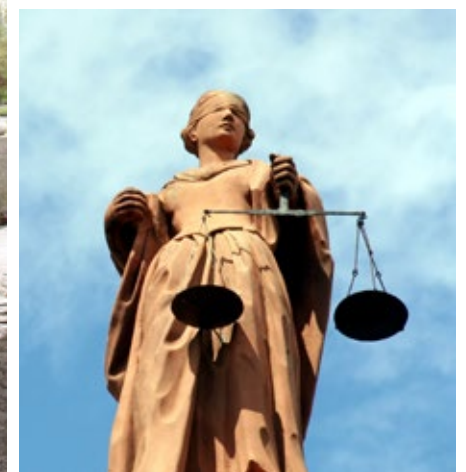
MA Criminology and Criminal Justice

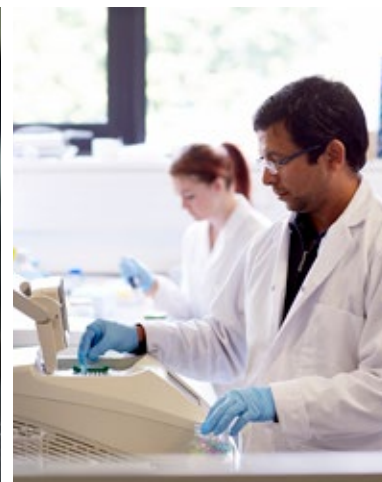
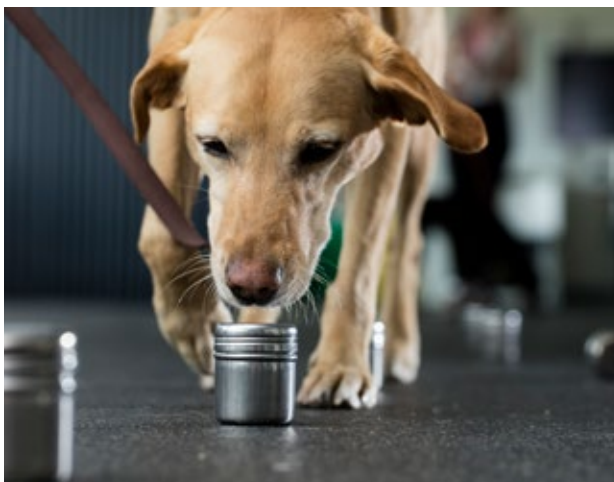
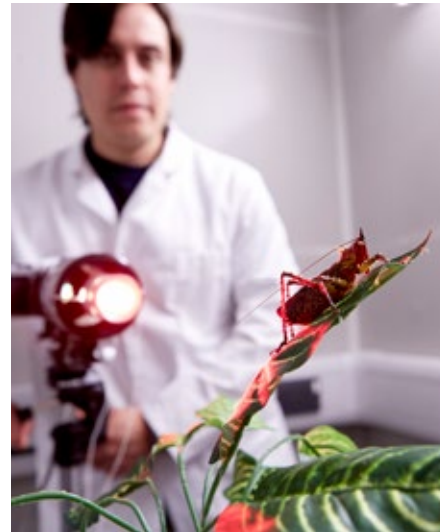
LLM Conflict and Disaster Law

LLM International Corporate and Commercial Law

LLM International Law

MPhil/PhD Law





Life Sciences

Life scientists play a critical role in developing our understanding of the anatomy, physiology, and biochemistry of humans, animals, plants, and other living organisms, to better understand how they function and interact with each other and the world around us.

At the University of Lincoln, we offer taught postgraduate programmes in specialist areas covering clinical animal behaviour, biotechnology, and microbiology, as well as research opportunities across the breadth of the life sciences aligned to research groups in animal behaviour, cognition, and welfare; cancer and ageing; diabetes, metabolism, and inflammation; evolution and ecology; and microbiology and biotechnology.

Teaching is underpinned by the research expertise of our academic staff, a number of whom are at the forefront of their respective fields. From tackling the life-threatening complications of diabetes to delivering innovative solutions in animal welfare, life sciences research at Lincoln is changing the world. Researchers collaborate both nationally and internationally with other leading universities, charities, governmental organisations, and businesses to address some of the most pressing challenges of the 21st Century.

Students can benefit from specialist facilities and equipment across our Brayford Pool Campus. The Joseph Banks Laboratories offer research facilities for molecular and cell biology, tissue biology, and DNA analysis, while Minster House accommodates specialist laboratories for animal cognition, behaviour, and welfare, including an insectary and a bioacoustics laboratory.

Research students are supported in developing key skills in research techniques, communication, and publishing. They are encouraged to share their findings with colleagues across the University, and

are supported in presenting their work at national and international conferences.

Whatever area of the life sciences our students pursue, we aim to provide a thriving and dynamic environment in which to learn, and an interdisciplinary approach which prepares our students for careers at the cutting-edge of their chosen discipline.

Courses

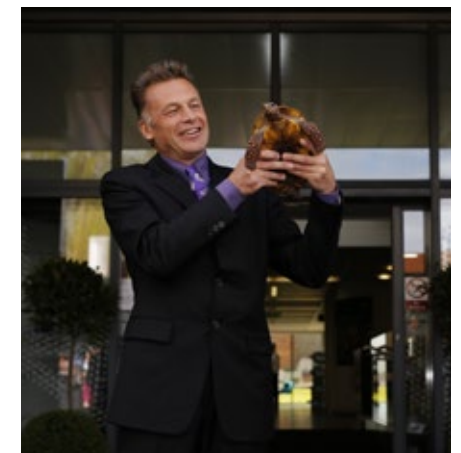
MSc Biotechnology

MSc Clinical Animal Behaviour

MSc by Research Life Sciences

MPhil/PhD Life Sciences

MSc Microbiology



Mathematics and Physics

Mathematics and physics are fundamental sciences critical to driving forward the latest advances in technology and engineering, and underpinning our understanding of the world around us.

The knowledge and problem-solving skills of mathematicians and physicists are highly sought after in a range of career destinations including science and technology, engineering, computing, medicine, education, consultancy, business and finance, and within government bodies.

At Lincoln, we aim to provide a supportive and nurturing teaching environment where research forms a key part of our programmes. Taught postgraduate programmes offer students the opportunity to extend their existing knowledge and undertake research projects, while offering an additional focus on both personal and professional development to support their career ambitions. Students can benefit from regular meetings with a mentor to discuss their progress, their target skills and qualification acquisition, and research topics to help equip them for employment in their chosen area.

Students undertaking research programmes can benefit from specialist computational facilities, training programmes to enhance research skills, and dedicated academic supervisors. The academic team also provides support and encouragement for students to submit papers to international scientific journals, present findings at conferences, and share their knowledge with colleagues across the University.

Focusing on four key areas of algebra, astrophysics, computational physics, and experimental nanophysics, researchers conduct cutting-edge research in

fundamental and applied mathematics and physics, ranging from pure mathematics to applied nanoscience at the interface between biology, chemistry, physics, and mathematics.

Students can access from specialist facilities in the University's Isaac Newton Building, a £28 million facility shared with engineers and computer scientists, promoting education and research collaboration.

Courses

MPhil/PhD Applied Mathematics

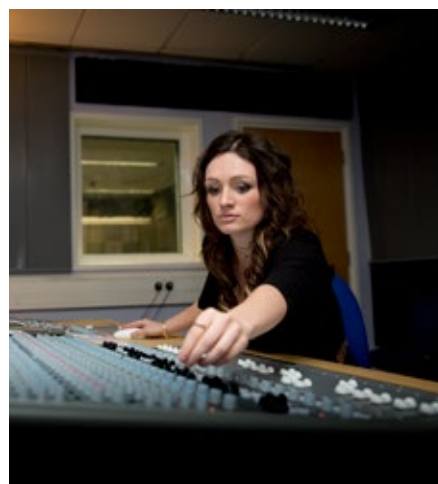
MPhil/PhD Computational Physics

MSc by Research Nanomaterials Science

MSc Physics

MPhil/PhD Pure Mathematics





Media

Media at the University of Lincoln focuses on the creative foundations and technical skills needed to thrive as a professional in the global creative culture of the future.

We offer a diverse portfolio of industry-focused taught and research-based postgraduate courses across film, media, and photography, where students can develop a critical and practical understanding of their chosen discipline.

At Lincoln, students can develop their creative voice through a blended approach to learning, combining critical academic study with practical production. They are able to produce original material in our impressive, purpose-built facilities which include industry-standard TV and radio studios, photographic and music studios, a sound theatre and Foley booth, and state-of-the-art multimedia production and editing suites. Our media and design labs include specialist software and equipment which enables students to develop their work at a professional level.

The University is home to a variety of media resources that can assist students in their studies, including the Media Archive for Central England, a public film archive that houses more than 70,000 moving image records, and New Media Lincs – an in-house media production company that offers students the chance to develop their portfolio.

Students are also able to work on real-world briefs and can benefit from engagement and industry links with the BBC, Panasonic, Sky, Adobe, BAFTA, the Royal Television Society, and the British Film Institute.

Media research at Lincoln responds to and engages with a wide array of themes and topics in culture, society, and the creative industries. Students can join a community of researchers undertaking projects relevant

to life in a digitally connected world, with particular strengths in media ethics, photography, digital media practice, and screenwriting practice. Research students are encouraged to share their expertise and engage in research events, symposia, exhibitions, and conferences.

Courses

MA Digital Media

MA Film Production

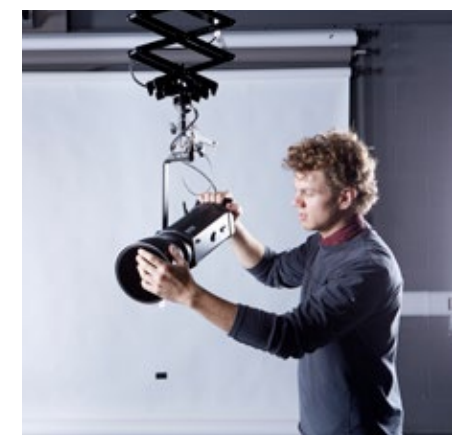
MPhil/PhD Media

MA by Research Media and Cultural Studies

MPhil/PhD Media and Cultural Studies

MA Photography

MA Studies in Media and Culture



Pharmacy

Pharmacists and pharmaceutical scientists have the potential to forge strong and unique bridges between science and healthcare to improve health outcomes, connecting with patients, healthcare practitioners, and the pharmaceutical industry.

At Lincoln, we aim to produce passionate pharmacists and pharmaceutical scientists who are adept in addressing many of the major healthcare challenges that we face in the 21st Century. Our research programmes provide students with the opportunity to liaise with professionals in the pharmacy, pharmaceutical, and biotechnology industries, and develop national and international collaborations.

Our research students are actively encouraged to prepare submissions to scientific journals in their field, and are expected to present their findings at national and international conferences. During their studies, they are able to benefit from access to purpose-built laboratory space and specialist equipment in the University's Joseph Banks Laboratories. They can also undertake a wide range of training programmes designed to enhance research and transferable skills, and receive support from dedicated academic supervisors.

Our scientists are at the forefront of international efforts to develop new drug treatments for the global fight against antibiotic-resistant bacteria, or 'superbugs'. Dr Ishwar Singh and his colleagues have

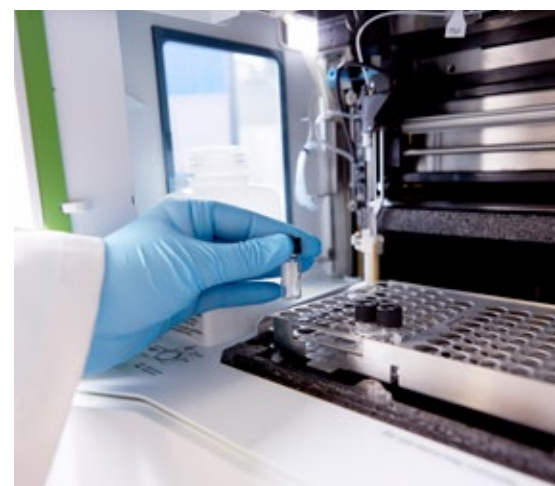
made vital advances towards developing a newly discovered antibiotic substance called teixobactin into a viable drug treatment. The team has successfully produced a synthesised version and used it to treat an infection in mice, marking a significant step towards producing the first new class of antibiotic drug in 30 years.

Pharmacy at Lincoln has strong links with the pharmaceutical industry and an important presence in the Lincoln Institute for Health. Collaborations are in place with the University's Antimicrobial Research Group, the Community and Health Research Unit, and the National Centre for Food Manufacturing, as well as with engineers, chemists, and life scientists across the University.

Courses

MSc by Research Pharmacy and Pharmaceutical Sciences

MPhil/PhD Pharmacy and Pharmaceutical Sciences





Psychology

Psychology brings together the scientific study of behaviour, mental health, and neuropsychological functioning in an attempt to understand what makes us human, and why we think the way we do.

At Lincoln, we offer a number of taught and research degrees in areas including forensic, clinical, and developmental psychology, enabling students to advance their knowledge and develop a specialism.

Our programmes are delivered by research-active academic teams with wide-ranging expertise in cognitive and behavioural development, applied clinical and forensic psychology, and cognitive neuroscience. Their research is supported by a variety of funding bodies, and is published in journals and presented at international conferences.

Postgraduate research students are at the heart of research activity, and many are supported through full or part-funded studentships and assistantships. Students can get involved in a range of research studies during their time at Lincoln, including 'Summer Scientist'. The event involves the participation of children between the ages of three and ten in a series of accessible games and activities which explore different aspects of cognitive development. Students are also part of a research team investigating perceptions of body image, using cutting-edge software and 3D scanning technology.

As part of their studies, students have access to a range of modern facilities within the University's £19 million Sarah Swift Building. These include a sleep laboratory, motor and EEG laboratories, a psychophysiology laboratory, and our 'BabyLab' – a specialist area for the study of child development.

Our graduates pursue careers in a variety of settings including the police, NHS and private hospitals, GP surgeries and health

centres, community mental health teams, prison and probation services, care services, schools and universities, social services, children's services, and forensic settings.

Courses

MSc Counselling*

MSc Developmental Psychology**

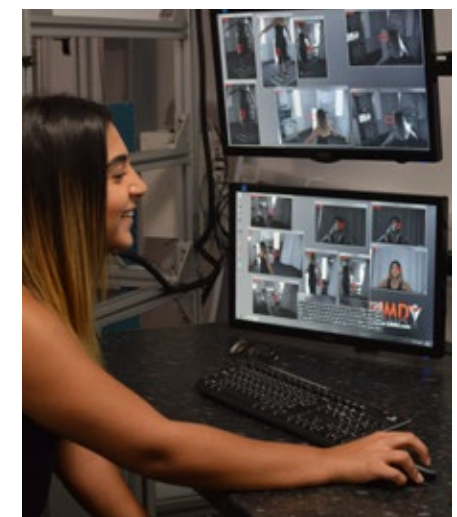
MSc Forensic Psychology

MSc Psychological Research Methods**

MSc by Research Psychology

DClinPsy Psychology

MPhil/PhD Psychology



Sport

Sports scientists combine theoretical knowledge with the practical application of scientific principles and technology to help individuals maximise their sports performance.

At Lincoln, we offer a range of taught and research-based postgraduate programmes that enable students to specialise in a particular area of sport and exercise science, sports studies, or sports therapy. Alternatively, they can retain a multi-disciplinary approach. The programmes are designed for graduates or professionals who want to build on their existing knowledge or develop a specialism in a particular area.

Students can take advantage of the University's state-of-the-art Human Performance Centre – a dedicated facility for applied work within the areas of sport and exercise physiology, biomechanics, psychology, and strength and conditioning. Housing specialist laboratory spaces containing equipment for the assessment and evaluation of human performance, the centre presents students with opportunities to engage in meaningful applied work and increase their practical experience.

Research students are able to work closely with academics whose research specialisms encompass areas of sport science, sports studies, and coaching practice. In addition to fundamental research, some academic supervisors specialise in developing local, national, and international partnerships to design and deliver projects that are beneficial to service users and which influence policy, practice, and procedures.

Students are able to engage in five distinct research groups, which cover biofeedback in sport, health advancement, mental toughness, physiology of exercise and sport performance, and youth sport.

At Lincoln, the employability of our graduates is at the core of our programmes,

and students are able to enhance their employability by gaining real-world experience. Our academics work closely with communities and practitioners including British Canoeing, Active Lincolnshire, and Lincoln City Football Club. There are opportunities for students on taught programmes to undertake active placements with these organisations in addition to individually sourced placements. Students can also gain hands-on experience with the University's Sports Injury Clinic.

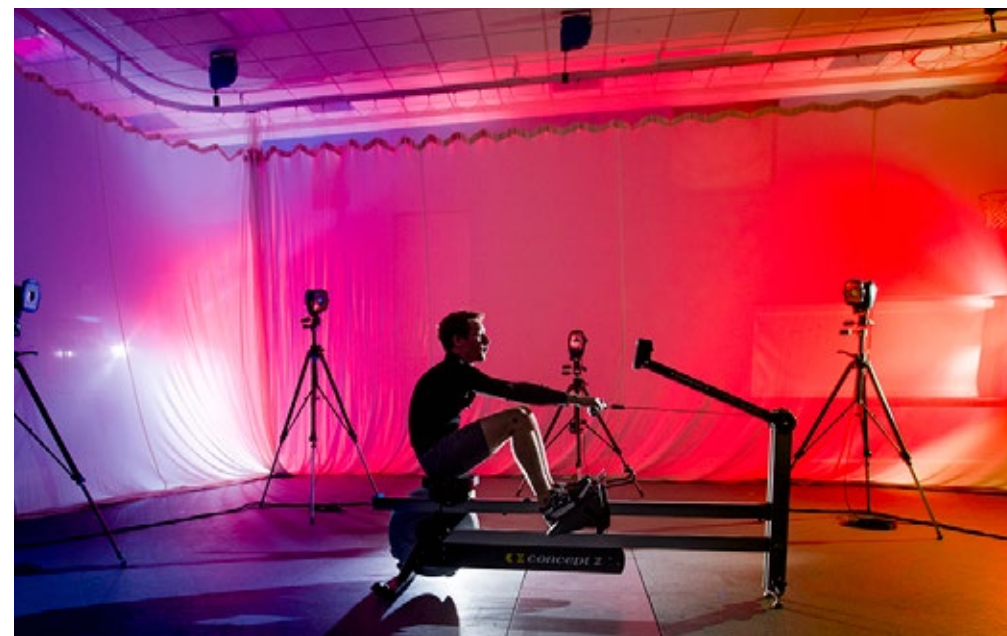
Courses

MSc by Research Sport and Exercise Science/Sports Studies

MPhil/PhD Sport and Exercise Science/Sports Studies

MSc Sport Science

MSc Sports Therapy



A-Z of Courses

21st Century Literature - MA
Accounting - MSc
Accounting - MPhil/PhD
Accounting and Finance - MSc
Advanced Clinical Practice - MSc**
Advanced Development in Social Work (Erasmus Mundus) - MA**
Agri-food Technology - MSc
Agri-food Technology - MSc by Research
Agri-food Technology (with Professional Practice) - MSc
Analytical Sciences - MSc
Applied Mathematics - MPhil/PhD
Architecture - MArch
Architecture - MPhil/PhD
Architecture (International Practice) - MArch
Art - MA by Research
Art - MPhil/PhD
Biotechnology - MSc
Chemistry - MSc by Research
Chemistry - MPhil/PhD
Choreography - MA**
Clinical Animal Behaviour - MSc
Computational Physics - MPhil/PhD
Computer Science - MSc
Computer Science - MSc by Research
Computer Science - MPhil/PhD
Conflict and Disaster Law - LLM
Conservation - MA by Research
Conservation of Cultural Heritage - MA
Conservation of Cultural Heritage - MPhil/PhD
Conservation Studies - Graduate Diploma
Construction Science and Management - MSc



Construction Science and Management - MPhil/PhD
Counselling - MSc*
Creative Writing - MA
Creative Writing - MPhil/PhD
Creative Writing and Publishing - MA
Criminology - MPhil/PhD
Criminology and Criminal Justice - MA
Crisis and Disaster Management - MSc
Culture and Heritage Management - MA
Culture and Heritage Management - MPhil/PhD
Design - MA
Design - MPhil/PhD
Development and the Environment - MA*
Developmental Psychology - MSc**
Digital Media - MA
Drama - MPhil/PhD
Economics - MPhil/PhD

Education - MA
Education - PhD (Professional)
Educational Research and Development - MPhil/PhD
Energy Materials and Battery Science - MSc
Engineering - MSc by Research
Engineering - MPhil/PhD
Engineering Management - MSc
English - MA by Research
English - MPhil/PhD
English Studies - MA
Events Management - MSc
Fashion Management - MSc
Film Production - MA
Finance - MSc
Finance - MPhil/PhD
Fine Art - MA
Food Manufacturing and Technology - MPhil/PhD
Forensic Psychology - MSc
Forensic Science - MSc
Forensic Science - MSc by Research
Forensic Science - MPhil/PhD
Forensic Toxicology - MSc



Games Development and Design - MSc
Gender Studies - MA
Geography - MA by Research
Geography - MSc by Research
Governance - MSc
Health and Social Care - MA by Research
Health and Social Care - MSc by Research
Health and Social Care - MPhil/PhD
History - MA
History - MA by Research
History - MPhil/PhD
Human Geography - MPhil/PhD
Human Resource Management - MSc
Human Resource Management - MPhil/PhD
Intelligent Vision - MSc
Interior Architecture and Design - MA
International Business - MSc
International Business Economics - MSc
International Corporate and Commercial Law - LLM



International Hospitality Management - MSc*
International Investment Banking - MSc
International Journalism - MA*
International Law - LLM
International Relations - MA
International Relations - MPhil/PhD
International Tourism Management - MSc
Journalism - MA
Journalism - MA by Research
Journalism - MPhil/PhD
Journalism (Arts) - MA
Journalism (Digital) - MA
Journalism (Science and Environment) - MA
Journalism (Sports) - MA
Journalism (War and International Human Rights) - MA
Law - MPhil/PhD
Leadership - MBA
Leadership - MPhil/PhD
Life Sciences - MSc by Research
Life Sciences - MPhil/PhD
Logistics and Global Operations - MSc
Logistics Management - MPhil/PhD
Management - MSc
Management - MPhil/PhD

Management and International Relations - MSc
Marketing - MSc
Marketing - MPhil/PhD
Marketing with Luxury Brands - MSc
Master of Business Administration (full-time) - MBA
Mechanical Engineering - MSc
Media - MPhil/PhD
Media and Cultural Studies - MA by Research
Media and Cultural Studies - MPhil/PhD
Medieval Studies - MA
Microbiology - MSc
Music - MA



Nanomaterials Science - MPhil/PhD
Nanoscience - MSc*
Nursing (Pre-registration - Adult) - MSc
Nursing (Pre-registration - Child) - MSc
Nursing (Pre-registration - Mental Health) - MSc
Occupational Therapy (Pre-registration) - MSc
Performing Arts - MPhil/PhD
Performing Arts (Drama, Dance, Music) - MRes
Pharmacy and Pharmaceutical Sciences - MSc by Research
Pharmacy and Pharmaceutical Sciences - MPhil/PhD
Philosophy - MPhil/PhD
Photography - MA
Physical Geography - MPhil/PhD
Physics - MSc
Physiotherapy (Pre-registration) - MSc
Politics - MA
Politics - MPhil/PhD
Postgraduate Certificate in Education (Primary) - PGCE
Postgraduate Certificate in Education (Secondary) - PGCE
Practice Portfolio in Health and Social Care - PhD
Professional Practice and Management in Architecture - PGDip
Project Management - MSc
Psychological Research Methods - MSc**
Psychology - MSc by Research
Psychology - DCLinPsy
Psychology - MPhil/PhD
Public Relations - MA
Pure Mathematics - MPhil/PhD
Robotics and Autonomous Systems - MSc
Social Policy - MPhil/PhD
Social Sciences - MPhil/PhD
Social Work - MSc



Sport and Exercise Science/Sports Studies - MSc by Research
Sport and Exercise Science/Sports Studies - MPhil/PhD
Sport Science - MSc
Sports Therapy - MSc
Studies in Media and Culture - MA
Theatre - MA
Theatre for Young Audiences - MA
Tourism - MPhil/PhD
Tourism and Marketing - MSc
Water and Planetary Health - MSc*

The University of Lincoln, its staff, students, and alumni are proud to have received a number of awards and commendations, including:

- Awarded Gold in the Teaching Excellence Framework (2017) • Ranked 17th overall in the UK out of 121 institutions in the Guardian University Guide (2020) • Award for Teaching Excellence by Advance HE (2019) • Top 10 nationally for quality of research outputs in Agriculture, Veterinary and Food Science as well as Allied Health Professions, Dentistry, Nursing, and Pharmacy, according to the Research Excellence Framework (2014)
- Commended by the Higher Education Funding Council for England for our strategic approach to knowledge exchange (2017) • Lord Stafford Award for Open Collaboration (2011)
- Times Higher Education Award for Outstanding Employer Engagement (2012) • QAA Commendation for Enhancement of Student Learning Opportunities (2012) • Inspirational Education Provision Award for Higher and Further Education in the National Autistic Society Autism Professional Awards (2018) • Lincoln Civic Award (2019) • The Guardian Most Inspiring Leader in Higher Education Award (2018) • Winner of the Association of Graduate Careers Advisory Services Award - Excellence in Employer Engagement (2016) • Royal Geographical Society (with IBC) Murchison Award (2018) • Royal Television Society Student Television Undergraduate News Award (2019) • British Council Alumni Awards – Social Impact category (2017) • MRC London Institute of Medical Sciences (MRC LMS) Suffrage Women in Science Award (2017) • Awarded Gold in the Fresh Garden: Scape Design category at the RHS Chelsea Flower Show (2013) • The John Thackray Medal, The Society for the History of Natural History (2018) • Awarded Gold in the Best Bar None Awards (2017) • The Royal Institute of British Architects East Midlands Awards for the Great Central Warehouse Library (2005) and David Chiddick Building (2003) • The Investors in the Environment Great Green Star Award (2014) • Students' Union of the Year at the NUS Awards (2014) • Bronze Athena SWAN award for championing gender equality in the workplace (2014) • The Rotary International Peace Award (2019) • Rising Star Award in the Pro Sound Awards (2017)
- Broadcast Journalism Training Council (BJTC) Student Journalism Awards – Best TV News Item (2016) • Educational Multimedia Award at the Learning on Screen Awards (2016)
- The Prime Minister's Point of Light Award (2014).

If you require this prospectus in an alternative format, please contact us:
Telephone: +44 (0)1522 886644
Email: enquiries@lincoln.ac.uk

Prospectus Information

Every effort has been made to ensure the accuracy of the information contained in this prospectus at the time of going to print. For the most up-to-date programme information, please visit our website at www.lincoln.ac.uk and use the course search function. If there is any inconsistency between the information in this prospectus and the information on our website, the information on our website should be taken as correct. Specific terms and conditions in relation to the contract that exists between applicants and the University can be found on our website: www.lincoln.ac.uk/terms.

Photography by:
Adobe Stock, Andy Weekes, Chris Goddard, Chris Hainstock, Chris Vaughan, Colin Anderson, Electric Egg, Greg Harding, pexels.com, Phil Crow, pixabay.com, Rob Smalley, Scene Photography, shutterstock.com, Stuart Wilde Photography, and Tim Cross.

SIMPLY A LIFE-CHANGING EDUCATION

Visit Us

Saturday 26 October 2019

Wednesday 20 November 2019

Saturday 1 February 2020

Saturday 7 March 2020

Saturday 4 April 2020

Saturday 23 May 2020

Wednesday 24 June 2020

Saturday 15 August 2020

To book your place, please visit our website.



UNIVERSITY OF
LINCOLN

University of Lincoln
Brayford Pool, Lincoln
Lincolnshire LN6 7TS
+44 (0)1522 886644

www.lincoln.ac.uk
enquiries@lincoln.ac.uk
 [universityoflincoln](https://www.facebook.com/universityoflincoln)
 [unilincn](https://twitter.com/unilincn)