



UNIVERSITY OF  
KWAZULU-NATAL™  
INYUVESI  
YAKWAZULU-NATALI

# POSTGRADUATE APPLICATION GUIDE



2015

INSPIRING GREATNESS

# Contents

## General Information

- Introduction 1
- A Choice of Campuses 3
- Entrance Requirements 7
- Entrance Procedures 10
- Residence and Subsistence Costs 14
- Services and Facilities 16
- International Applicants 21

## Postgraduate Qualification Listings

- College of Agriculture, Engineering and Science 28
- College of Health Sciences 32
- College of Humanities (Including Education) 36
- College of Law and Management Studies 41



Published by Student Academic Affairs, UKZN.  
Designed by Artworks Communications  
([www.artworks.co.za](http://www.artworks.co.za))

Visit the UKZN's website at:  
[www.ukzn.ac.za](http://www.ukzn.ac.za)

 [www.facebook.com/ukzn1](https://www.facebook.com/ukzn1)

All information in this Prospectus was correct at the date of publication, July 2014.

*Doctoral candidates at graduation.*



## Introduction

The University of KwaZulu-Natal (UKZN) was formed on 1 January 2004 as a result of a merger between the former Universities of Durban-Westville and Natal. The new institution brings together the academic expertise and research capacity of two major regional universities and is at the forefront of higher educational transformation in South Africa.

The University is home to the region's leading academics and has among its staff an impressive number of internationally acclaimed scholars rated by the National Research Foundation, as well as researchers holding the prestigious South African Research Chairs (SARChI) in different areas of specialisations. Research is conducted by, and in association with members of the academic

staff, associated research units, industry, business, government, local communities and international institutions and agencies.

The vision of the University of KwaZulu-Natal is to be the "Premier University of African Scholarship". It strives to reflect the society in which it is situated, not only in terms of race, gender and class, but in how it structures its values and priorities and how it responds, through its research, to social needs. KwaZulu-Natal provides fertile soil for researchers and the University's mission commits the institution to critical engagement with its society and encourages practical research that will lead to socio-economic upliftment of communities. This outcomes-driven approach has led to the establishment of inter-disciplinary 'centres of excellence' devoted to particular projects and



*The History Education Programme recently hosted the Historical Association of South Africa (HASA) Conference in Durban.*

often involving collaboration with institutions from around the world.

The University has formal and informal ties, as well as established exchange programmes, with more than 260 leading universities around the world. At present one-third of the total student registrations are in postgraduate studies. The College Deans of Research are responsible for the management and nurturing of knowledge production and dissemination, as well as support for postgraduate students at the College level.

Senior academics take pride in the mentorship provided to graduate students, encouraging them to develop their skills in critical appraisal and independent thought.

The University provides a vibrant environment for basic and applied research, and offers internationally recognised postgraduate research degrees in all disciplines. It has fostered strategic initiatives in the areas of HIV/AIDS, conservation, economic development and water.

Research innovation is a cornerstone of the new University and as an institution of higher learning, research excellence is recognised and supported as part of its essential identity. The University is committed to growing its existing research capacity further and leading the bid to bring South African and African scholarship to the attention of the international community. At the same time, we recognise that excellence in research and knowledge production should lead to practical interventions in national development strategies, and should be directed to the upliftment of poor and under-developed communities.

Postgraduate students at the University have the opportunity to contribute towards these interventions. The University's strategic priorities are informed by both national and international needs and opportunities and provide considerable scope for cutting-edge research.

We look forward to bringing future postgraduate students on board.



*eThekweni Municipality, in partnership with UKZN and other stakeholders, recently launched Innovate Durban during an Innovation Summit at Moses Mabida Stadium.*

# A Choice of Campuses

The University of  
KwaZulu-Natal offers  
prospective students the  
choice of five campuses,  
each with its own  
distinctive character.

## Edgewood Campus (Pinetown)

The former Edgewood College of Education was incorporated in 2001 and the Edgewood Campus in Pinetown is now the University's primary site for teacher education. With easy access to the N3 highway and approximately 20 minutes' drive from Durban, the Campus offers sophisticated and attractive facilities to a growing number of Education students. Initial and in-service teacher education, higher degrees in a wide range of specialisms as well as research and consultancy are offered. Staff members are engaged with policy-making in education in South Africa and contribute to the international profile of the University through participation in international conferences, teaching international students, hosting international visitors and publishing in international books and journals.



## **Howard College Campus (Durban)**

Durban is a vibrant coastal city renowned for its beaches and resorts. The city is also a major South African port. The magnificent game reserves and estuaries of Maputaland, north of Durban, are a favourite getaway for staff and students alike. Opened in 1931, following a generous donation by Mr TB Davis, whose son Howard Davis was killed during the Battle of Somme in World War I, the Howard College Campus is situated on the Berea and offers spectacular views of the Durban harbour. The Campus is situated in a successful environmental conservancy and the lush gardens reflect a commitment to indigenous flora and fauna. Howard College currently offers a range of postgraduate qualifications in Engineering, Law, Nursing and Humanities (including Music, Social Work, Housing and Architecture).

## **Nelson R Mandela School of Medicine (Durban)**

The Medical School was founded in 1950 as a 'black faculty' in a 'white institution'. The School has been synonymous with the struggle for democracy and racial equality. On its 50th anniversary in 2000, the School received the finest birthday present it could have wished for – the agreement of former President and Nobel Peace Prize winner, Nelson Mandela, to link his name to the School. The Campus is also home to the Doris Duke Medical Research Institute which was launched in July 2003, and which is

training a generation of clinical researchers, enhancing the clinical research infrastructure in KwaZulu-Natal, and fostering collaborations between research groups working on similar projects in South Africa and other countries.

## **Pietermaritzburg Campus**

Pietermaritzburg is located in the scenic Natal Midlands, close to numerous nature reserves and parks, only one hour's drive from Durban and two hours' drive from the Drakensberg. The city has a rich architectural heritage, with examples of Victorian and Edwardian buildings. It is the birthplace of the former University of Natal and its forerunner, the Natal University College, which opened its doors to 57 students in 1910. Two years later, Old Main Building was completed and the hub of the present-day Pietermaritzburg Campus was established. The Campus offers a wide range of innovative academic programmes, which have been successful in responding to local and provincial needs in the broad areas of Science and Agriculture, Education, Law, Human and Management Sciences. The disciplines of Agriculture, Theology and Visual Arts are unique to the Campus.

## **Westville Campus (Durban)**

The Westville Campus is located within an environmental conservancy about eight kilometres from the CBD of Durban and Pinetown. The Campus combines state of the art infrastructure with beautiful natural surroundings. The Hindu temple and Islamic

place of worship reflect its rich multicultural history. It is the official address of UKZN, housing the Vice-Chancellor's office, the offices of Executive members and University-wide administrative divisions. The campus currently offers postgraduate programmes in Science, Management and Health Sciences.

### International recognition

The University has a worldwide reputation for academic excellence in teaching and research, and all degrees awarded are internationally recognised. The University has formal links, exchange programmes and collaborative teaching and research programmes with many universities around the globe. A large number of agreements and Memoranda of Understanding have been signed with various institutions in Africa, Asia, Europe and the USA.

### Leaders in curriculum development

UKZN has taken a leading role in curriculum development in recognition of worldwide trends and the restructuring of the entire South African educational system towards a more 'outcome-based' approach. Many of the challenges faced in professional life cannot be solved by a single discipline. UKZN has therefore redesigned its curricula to include a large element of inter-disciplinary work. In this way, students are exposed to a range of disciplines, thus widening their choice of career options, and enhancing their understanding of the society in which they will live and work.



*Alistair Clulow, a member of the Centre for Water Resources Research and lecturer in AgMet installing an Eddy Covariance system to measure evaporation from a vineyard as part of a project to test remote sensing approaches to estimate water use and improve irrigation scheduling for different crops.*

## Addresses

### Edgewood Campus

Private Bag X03  
Ashwood, 3605  
Tel: +27 (0)31 260 3414  
Email: [enquiries@ukzn.ac.za](mailto:enquiries@ukzn.ac.za)

### Howard College Campus

King George V Avenue  
Durban, 4041  
Tel: +27 (0)31 260 2212/7757/2238  
Email: [enquiries@ukzn.ac.za](mailto:enquiries@ukzn.ac.za)

### Nelson R Mandela School of Medicine

Private Bag 7  
Congella, Durban, 4013  
Tel: +27 (0)31 260 4248/4377  
Email: [postgrad@ukzn.ac.za](mailto:postgrad@ukzn.ac.za)

### Pietermaritzburg Campus

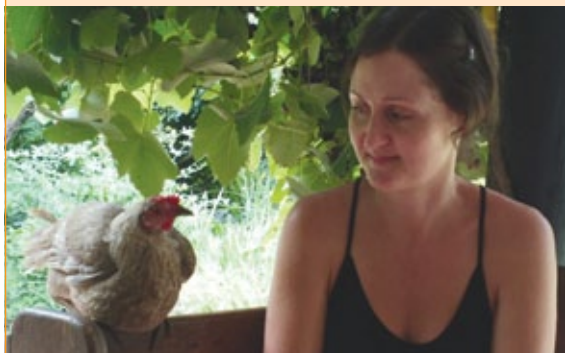
Private Bag X01  
Scottsville, 3209  
Tel: +27 (0)33 260 5212/5214  
Email: [enquiries@ukzn.ac.za](mailto:enquiries@ukzn.ac.za)

### Westville Campus

Private Bag X54001  
Durban, 4000  
Tel: +27 (0)31 260 7877/2011  
Email: [enquiries@ukzn.ac.za](mailto:enquiries@ukzn.ac.za)



*Bodybuilding World Champion Mr Joshua Nkosi was ranked fourth overall at the NABBA-WFF Universe Championships in South Korea.*



*Ms Betany Adams, a masters student in the School of Chemistry and Physics Quantum Research Group, is the runner-up in the international Quantum Shorts competition for her story entitled: Dice.*



# Entrance Requirements

## Postgraduate Diplomas (NQF 8) Requirements

- An appropriate Bachelor's degree OR
- Admission to the status of that degree in terms of Rule GR7 (a) OR
- Attained a level of competence as defined by Rule GR7 (b)
- A School/College may prescribe further criteria for admission to study. Consult College Handbooks on [www.ukzn.ac.za](http://www.ukzn.ac.za)
- Some Schools/Colleges may accept an Advanced Diploma for entry into a Postgraduate Diploma if HEQF (Higher Education Qualification Framework) requirements are met.

## Duration

A minimum of at least two consecutive semesters. Except with permission of Senate, all modules shall be completed at the University.

## Curriculum

The curriculum will contain advanced reflection, practice and research methods in the area of specialisation and may include a sustained research project in accordance with College rules approved by Senate.

## Rule GR7

- Graduates of any other recognised university (whether in the Republic of South Africa or elsewhere) may, for the purpose of proceeding to a postgraduate qualification of the University, be admitted by the Senate to a status in the University equivalent to that which they possess in their own university by virtue of any degree held by them.
- An applicant who has graduated from another tertiary institution or who has in any other manner attained a level of competence which, in the opinion of the Senate, is adequate for the purpose of postgraduate studies or research, may be admitted as a student of the University.



*The 42nd annual meeting of the Surgical Research Society of South Africa was hosted by the Department of Surgery, Nelson Mandela School of Medicine.*

## Bachelor of Honours degrees (NQF 8)

### Requirements

- An appropriate Bachelor's degree OR
- Admission to the status of that degree in terms of Rule GR7 (a) OR
- Attained a level of competence as defined by Rule GR7 (b)
- A School/College may prescribe further criteria for admission to study. Consult College Handbooks on [www.ukzn.ac.za](http://www.ukzn.ac.za).

### Duration

A minimum of at least two consecutive

semesters. Except with permission of Senate, all modules shall be completed at the University.

### Curriculum

The curriculum for the Honours degree shall include a prescribed research project as one of the modules which shall account for a minimum of 25% of the credits for the degree.

## Masters by coursework and Masters by research (NQF9)

### Requirements

- A relevant prerequisite degree OR



*Graduates at the Graduate School of Business and Leadership.*

- Admission to the status of that degree in terms of Rule GR7 (a) OR
- Attained a level of competence as defined by rule GR7 (b)
- A School/College may prescribe further criteria for admission to study. Consult College Handbooks on [www.ukzn.ac.za](http://www.ukzn.ac.za).

### Duration

#### Coursework

- A minimum of two consecutive semesters (full-time) or four consecutive semesters (part-time) before the degree may be conferred
- With permission and in terms of College regulations, periods of attendance at graduate level at another institution or in another College may be accepted. (Consult with relevant School)

#### Research

A minimum of two consecutive semesters before the degree may be conferred.

### Curriculum

#### Coursework

Candidates shall complete all modules of which one will be a dissertation on a research topic to be approved by Senate. The dissertation module will normally comprise 33-50% of the credit value of the degree.

#### Research

Candidates shall be required to pursue an appropriate programme of research on a

subject falling within the scope of the studies presented at the University. Students must also adhere to possible other conditions prescribed by Colleges/Schools.

## Doctor of Philosophy or supervised Doctoral degrees by research (NQF 10)

### Requirements

- A relevant prerequisite degree OR
- Admission to the status of that degree in terms of Rule GR7 (a) OR
- Attained a level of competence as defined by rule GR7 (b)
- A School/College may prescribe further criteria for admission to study. Consult College Handbooks on [www.ukzn.ac.za](http://www.ukzn.ac.za).

### Duration

A minimum of four consecutive semesters before the degree may be conferred.

### Curriculum

Students will be required to pursue an approved programme of research on a subject falling within the scope of studies at the University. Such a programme shall make a distinct contribution to the knowledge or understanding of the subject and afford evidence of originality shown either by the discovery of new facts and by the exercise of independent critical power. Students must also adhere to other possible conditions prescribed by Colleges/Schools.

# Entrance Procedures

## Selection procedure

The selection of students for postgraduate study is at the discretion of the Deans and Heads of Schools or the Dean of Research, who will require a particular standard of previous attainment. An applicant may contact the School concerned for more information.

## Application procedure

While actual selection is carried out by Schools, administrative application is a vital part of the procedure which must be followed:

- All applicants for postgraduate study must complete a UKZN 'Application for Postgraduate Admission' form.
- Application forms are available from the Applications/College Offices or on the UKZN website at [www.ukzn.ac.za](http://www.ukzn.ac.za) under 'Postgraduate Applications'.
- An application fee must be paid to UKZN on submission of the application or at the bank (see detail in next column).
- Once the application data is processed, a candidate will be issued with a student number.
- These steps will enable you to proceed with registration, once selected.
- Currently, no online application facility is available. Please mail the completed form to the address on the cover, or email to [enquiries@ukzn.ac.za](mailto:enquiries@ukzn.ac.za).

## Application fees

**A non-refundable application fee is payable on submission of the application form.**

- Local students R175
- SADC and countries in Africa R470
- Countries outside Africa US \$146

## Application fees can be paid to

**Bank:** Standard Bank

**Name of account:** UKZN Main

**Type of account:** Business Current Account

**Account number:** 05 308 0998

**Branch:** Westville

**Branch code:** 045426

**Reference:** F001 11402 with applicant's full name

**Swift code:** SBZAZAJJ (for international)

**Please provide your full name on the deposit slip and submit proof of payment on submission of your application.**

### Closing dates

Refer to the listing on pages 28-45 for information on closing dates.

### Tuition fees payable (fees will change for 2015)

#### Postgraduate Diplomas, Honours and Coursework Masters

##### South African students

Please note that fees quoted are for 2014. Please allow for an increase of at least 5-10% for 2015.

The fees for postgraduate courses fluctuate depending on the qualification, the academic year, and whether the qualification is taken on a full-time or part-time basis. The full fee structure for South African and SADC students

can be found on [www.ukzn.ac.za/docs/general-docs/student-fee-guide-20143F5B22590CA1.pdf?sfvrsn=2](http://www.ukzn.ac.za/docs/general-docs/student-fee-guide-20143F5B22590CA1.pdf?sfvrsn=2) but the following example is given to explain the structure:

#### Postgraduate Diploma in Education

1 year full-time	R17 154 p.a.
2 years part-time	R8 179 p.a.

#### International students

Students from SADC and other African countries pay the same fees as South African students but will pay an additional levy of R1 221 per semester (R2 442 per annum). Fees will increase for 2015.

#### For more information contact:

Tel: +27 (0)31 260 2426  
Email: [goveni@ukzn.ac.za](mailto:goveni@ukzn.ac.za)



*Business professionals were invited to form partnerships with young entrepreneurs.*



*UKZN Chair of Council, Mrs Phumla Mnganga and the Director of the Department of Higher Education and Training, Ms Brenda Swart.*

**Students from countries outside Africa**

All students enrolling for Postgraduate Diplomas, Honours or Coursework Masters degrees will pay a tuition fee of:

- i) Full-time (one year) – US\$10 024 p.a.
- ii) Part-time (two/more years) – US\$5 012 p.a.

These fees are inclusive of the international levy. Where a student does not complete the dissertation in one year (full-time) or two years (part-time) a tuition fee of R860 and an international levy of R1 221 will be charged per

semester (R2 442 per year). Fees will increase for 2015.

**For more information contact:**

Tel: +27 (0)31 260 2426  
 Email: [goveni@ukzn.ac.za](mailto:goveni@ukzn.ac.za)

**Research Masters and Doctoral studies**

**Full-time**

No tuition fee is charged for full-time Masters and Doctoral studies by research. Full-time international students will be required to pay an international levy of R1 221 per semester (2014) only. Students are eligible for this remission of tuition fees if studies are completed in the minimum prescribed period of study (three years for a PhD, one year for a Masters). Students unable to complete within the minimum period will be charged as per the schedule below.

**Study abroad students**

The tuition fee for any international students taking one or more modules for non-degree purposes will be US\$1 478 per 16 credit module per semester, inclusive of the international levy.

**Continuing fees schedule (research students)**

Doctorate	Masters	Fees
Human Sciences, Law, Management Studies, Nursing, Social Science	Accountancy, Art, Commerce, Education, Fine Arts, Information Studies, Law, Music, Nursing, Social Science, Theology, Psychology, Social Work	R6 776 per year or R3 875 per semester
Agriculture, Architecture, Geography, Engineering, Medicine, Science, Dev. Studies, Health Sciences	Agriculture, Architecture, Construction Mngt, Dev. Studies, Engineering, Geography, Land Surveying, Science, Urban and Regional Planning, Health Sciences	R7 903 per year or R3 954 per semester

**Part-time**

Masters	First two years	Subsequent years
Accounting, Arts, Commerce, Education, Fine Arts, Information Studies, Law, Management Studies, Music, Nursing, Criminology, Social Science, Theology, Psychology, Social Work	R10 696 p.a.	R3 427 p.a.
Agriculture, Architecture, Development Studies, Engineering, Geography, Land Surveying, Medical Science, Science, Urban and Regional Planning	R12 808 p.a.	R3 427 p.a.
Doctoral	First two years	Subsequent years
Human Sciences, Humanities, Development and Social Sciences, Law, Management Studies, Nursing	R21 862 p.a.	R3 427 p.a.
Agriculture, Architecture, Geography, Engineering, Medicine, Science, Development Studies	R25 592 p.a.	R3 427 p.a.
DBA	R37 106 p.a.	R3 427 p.a.

**International affiliates**

Visiting international students (other than post-doctoral students) who are not registering for any modules but wish to be affiliated to UKZN whilst pursuing their own research, or are here in any other capacity, will pay US\$258 per month (minimum fee charged) or a maximum of US\$1 546 per semester. No application fee is payable.

Please note that the above fees cover tuition fees only. Provision must be made for all other necessary expenses such as accommodation, food, transport and subsistence (see pages 14-15). From the fees listed above, students should take into account only those costs which are relevant to their studies at the University.



*International students participating in a dance class at the BAT Centre.*



*Mr Mathodi Motsami (PhD candidate in Art History) presented a paper at a conference in Greece.*

## Residence and Subsistence Costs

### University residences during academic term

Accommodation fees	R25 000
Cost of meals	R22 000
<b>Total cost</b>	<b>R47 000 p.a.</b>

### On-campus vacation accommodation

Accommodation fees do not include residence fees during vacations. Accommodation during vacation is R67.10 per day.

### Off-campus accommodation

Accommodation excl. meals	R25 000
Cost of meals	R22 000
<b>Total cost</b>	<b>R47 000 p.a.</b>

International students pay the same accommodation fees as South African students but **international students have**

to pay all tuition and residence fees due to the **University in advance prior to registration at UKZN.**

### Additional expenses

Students must take into account a range of expenses which they may have to meet, depending on their particular course of study.

These may include:

- Orientation Week
- Text materials (issued by the University)
- Field trips
- Books, stationery and equipment
- Transport (off-campus)
- Sports clubs and societies (optional)
- Pocket money

As a guideline, a total amount of R24 000 (South African Rand) should be allowed for



*Mabel Palmer Residence, Howard College campus.*





*Pietermaritzburg campus.*

a full year's study to cover the above. Fees quoted are in South African Rands per annum. The cost to the student in the currency of origin shall vary from time to time, based on the prevailing exchange rate of the South African Rand.

### **Other specific expenses (international students only)**

**Medical subscription:** R4 250 p.a.

### **Banking details for tuition fees**

Tuition fees can be paid into the following bank accounts and proof of payment must be faxed to: +27 (0)31 260 3099.

### **South African students**

**Bank:** Standard Bank  
**Name of account:** UKZN Student Deposit  
**Type of Account:** Business Current Account  
**Account number:** 05 308 1072  
**Branch:** Westville  
**Branch Code:** 045426  
**Reference:** UKZN student number

### **International students (including SADC students)**

**Bank:** Standard Bank  
**Name of account:** UKZN Foreign Deposit  
**Type of account:** Business Current Account  
**Account number:** 05 308 2826  
**Branch:** Westville  
**Swift code:** SBZAJJJ  
**Reference:** UKZN student number

## Services and Facilities

### Accommodation

Limited self-catering single room residence accommodation is available on campuses. Space is limited, and you are advised to make application as early as possible. Many post-graduate students prefer to stay off-campus in privately rented student digs or apartments. For further information on residence and off-campus accommodation, please consult the website [www.ukzn.ac.za](http://www.ukzn.ac.za) or contact:

#### Edgewood

Tel: +27 (0)31 260 3611  
 Fax: +27 (0)31 260 3426  
 Email: [frarag@ukzn.ac.za](mailto:frarag@ukzn.ac.za)

#### Howard College and Medical School

Tel: +27 (0)31 260 2028  
 Fax: +27 (0)31 260 1396  
 Email: [dludla@ukzn.ac.za](mailto:dludla@ukzn.ac.za)

#### Pietermaritzburg

Tel: +27 (0)33 260 6226  
 Fax: +27 (0)33 260 5799  
 Email: [frankv@ukzn.ac.za](mailto:frankv@ukzn.ac.za)

#### Westville

Tel: +27 (0)31 200 7901  
 Fax: +27 (0)31 260 7113  
 Email: [khumalos@ukzn.ac.za](mailto:khumalos@ukzn.ac.za)

### Financial support

The Student Funding Advisors in Colleges administer postgraduate scholarships and bursaries (and loans for South African citizens). All full-time doctoral and research masters students will qualify for full fee remission of the South African tuition fees for the minimum duration of the degree, subject to satisfactory progress requirements being met. Minimum duration means 1 year/2 semesters in the case of masters students, and 3 years/6 semesters (or 2 years/4 semesters where applicable) in the case of doctoral students. Application forms for external scholarships (such as those awarded by the National Research Foundation) are available from the College Advisors. For further information visit [www.ukzn.ac.za/studentfund](http://www.ukzn.ac.za/studentfund), or contact:

#### College of Agriculture, Engineering and Science

**Howard College** Tel: +27 (0)31 260 1502  
**Pietermaritzburg** Tel: +27 (0)33 260 5837/6145  
**Westville** Tel: +27 (0)31 260 7889

#### College of Health Sciences

**Howard College and Medical School**  
 Tel: +27 (0)31 260 4359  
**Westville** Tel: +27 (0)31 260 7889

#### College of Humanities

**Edgewood** Tel: +27 (0)31 260 3603  
**Howard College** Tel: +27 (0)31 260 2231  
**Pietermaritzburg** Tel: +27 (0)33 260 5758

### College of Management and Law

**Howard College** Tel: +27 (0)31 260 1500  
**Pietermaritzburg** Tel: +27 (0)33 260 5739  
**Westville** Tel: +27 (0)31 260 2216

### Health Clinics

Fully trained nurses on duty – doctor by appointment:

- Assessment/treatment of health problems (referral as necessary).
- Contraception & counselling, emergency contraception (morning-after pill), free condoms, pregnancy testing.
- Treatment of Sexually Transmitted Diseases and AIDS tests (pre and post-test counselling).
- Assessment and referral of drug and alcohol-related problems.
- Monitoring of health problems e.g. blood sugar level, blood pressure.
- Health education.
- Voluntary Counselling/Testing.

**Edgewood** Tel: +27 (0)31 260 3252  
**Howard College** Tel: +27 (0)31 260 3285  
**Medical School** Tel: +27 (0)31 260 4506  
**Pietermaritzburg** Tel: +27 (0)33 260 5208  
**Westville** Tel: +27 (0)31 260 7302

### Student support services

Some specific services offered to registered students include:

- Personal counselling and therapy.
- Crisis and trauma counselling.
- Study skills, lifeskills and diversity awareness.

- Advocacy and mediation.
- Career counselling.
- Career development services.
- Peer mentoring.
- Professional career assessment services (fee charged for assessment).

### College of Agriculture, Engineering and Science

**Howard College** Tel: +27 (0)31 260 7440  
**Pietermaritzburg** Tel: +27 (0)33 260 2221  
**Westville** Tel: +27 (0)31 260 5695

### College of Health Sciences

**All campuses** Tel: +27 (0)31 260 7087

### College of Humanities

**All campuses** Tel: +27 (0)31 260 2668

### College of Law and Management

**All campuses** Tel: +27 (0)31 260 7337

### Students with disabilities

The University is committed to responding to the needs of students with disabilities. The Disability Unit, in collaboration with Schools, is responsible for developing and facilitating a wide range of services for support of disabled students e.g. academic support, accommodation, finance, access, etc. It is recommended that applicants with disabilities contact the Disability Co-ordinator on the respective campuses.

**Edgewood** Tel: +27 (0)31 260 3665  
**Howard College** Tel: +27 (0)31 260 3070/3140

**Medical School** Tel: +27 (0)31 260 3070/3140  
**Pietermaritzburg** Tel: +27 (0)33 260 5213/5233  
**Westville** Tel: +27 (0)31 260 7706/7888

## Computer facilities

The Information and Communication Technology Division provides students with free access to the Internet and e-mail. PC LANS are accessible 24 hours a day, with facilities for scanning and printing. Appropriate software packages are provided on the LANS.

## Security

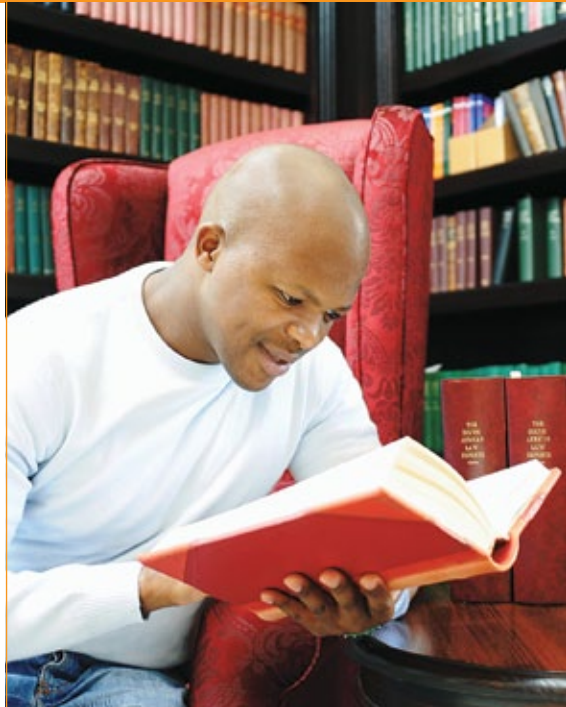
Residences and campus perimeter entrances have pedestrian/visitor access control. Risk Management Services (RMS) offer:

- Fire protection and detection;
- Occupational health and safety;
- Trained security guards;
- Campus crime info line;
- Student identity cards;
- Vehicle parking discs;
- Immediate attention with accidents; and
- Assistance in obtaining medical, counselling and other support after hours.

**Edgewood** Tel: +27 (0)31 260 3493  
**Howard College** Tel: +27 (0)31 260 2540  
**Medical School** Tel: +27 (0)31 260 4516  
**Pietermaritzburg** Tel: +27 (0)33 260 5211  
**Westville** Tel: +27 (0)31 260 7133/7265

## Libraries

The Libraries on the five campuses house excellent collections. Qualified subject librarians provide general reference and



*Student doing research in the Law library, Howard College campus.*

instructional services to students, staff and the wider community. The libraries are fully computerised and operate in a networked environment that provides access to the computerised catalogues and a range of local, national and international databases.

In collaboration with Colleges, the branches of the University Library provide information services and access to an impressive collection of academic resources to support learning, teaching, research and development endeavours. More information can be found at: [www.library.ukzn.ac.za](http://www.library.ukzn.ac.za).

Campus	Library	Specialisation
Edgewood	The ES Edminson Library	Education
Howard College	The EG Malherbe Library	Humanities, Social Sciences, Engineering
	The GMJ Sweeney Library	Law
	The Eleanor Bonnar Library	Music
Medical School	The Barrie Biermann Library	Architecture
	The Medical Library The Victor Daitz Information Gateway	Health Sciences A virtual library specialising in HIV/AIDS
Pietermaritzburg	The Cecil Renaud Library	Humanities, Social Sciences, Commerce and Management, and the Sciences
	The Law Library	Law
	Life Sciences Library	Biological Sciences: houses important research collections for natural sciences
	Collections of Periodicals in the Schools of Physics and Chemistry	Natural Sciences
	The Alan Paton Centre and Struggle Archives The University Archives CATNIP network	Information on resistance to apartheid in KZN Midlands Collection of works and papers pertaining to the Liberal Party and other political organisations Material on the University's history and achievements of staff and students Includes the holdings of 26 libraries in the Pietermaritzburg region in the UKZN Library Catalogue. Members include the Natal Society Library, Natal Museum, Cedara Agricultural Institute, and members of the Theological Cluster
Westville	The Main Library	Located at Dental hospital. It holds a large volume of books, journals and audiovisual materials and provides access to electronic resources (bibliographic and full-text databases) as well as links to academic and other resources on the Internet
	The Joe Ryan Library	



*Con Malherbe, grandson of former rector, Dr EG Malherbe, after whom the EG Malherbe Library was named, recently completed the 19-day, 2 300km Freedom Challenge or Race Across South Africa (RASA) from Pietermaritzburg to Cape Town to raise funds to support the education of a disadvantaged child.*

## Sports and recreation

Sport is an important part of University life and UKZN caters for everyone – from recreational to highly competitive participation as members of sports clubs. Clubs provide excellent facilities, coaching and equipment for students who wish to compete at any level (beginner to international).

All sport is administered by the Sport Administration Offices. University sport is affiliated to USSA (University Sport South Africa) and opportunities are provided for competition at regional and national level, culminating in the World Student Games which are held biennially. Sports Scholarships are available for top performers. Any student who is selected for provincial or national representation can apply to the Sports Administration for financial assistance.

The **Edgewood**, **Howard College**, **Pietermaritzburg**, and **Westville** campuses all have an impressive range of indoor and outdoor facilities. Each of the campuses has

its own tennis and squash courts, swimming pool and jogging areas. Some of the major sporting activities offered at the **Edgewood** campus include chess, volleyball, netball, aerobics, swimming, athletics, rugby, cricket and snooker. There are both indoor and outdoor facilities.

At **Howard College** and **Pietermaritzburg** campuses athletics, aerobics (HC only), basketball, ballroom dancing, canoeing, cricket, hockey, karate, mountaineering (HC only), netball, rugby, soccer and squash are offered. **Howard College** has an indoor sports complex and offers boxing, chess, gymnastics, surfing, underwater sport and yachting, while **Pietermaritzburg** also offers tennis, rowing and volleyball. The **Westville** campus boasts a well-equipped and modern indoor sports complex and an Olympic-size swimming pool. Athletics, aerobics, badminton, basketball, boxing, ballroom dancing, chess, cricket, gymnastics, golf, karate, netball, soccer, softball, squash, swimming, table tennis, volleyball and weightlifting/body building are offered at **Westville**.

<b>Edgewood</b>	Tel: +27 (0)31 260 3610
<b>Howard College</b>	Tel: +27 (0)31 260 2281
<b>Medical School</b>	Tel: +27 (0)31 260 2197
<b>Pietermaritzburg</b>	Tel: +27 (0)33 260 5189
<b>Westville</b>	Tel: +27 (0)31 260 7362



*UKZN's Impi rugby team reached the final of the Varsity Shield tournament.*

# International Applicants

## Entrance requirements

International applicants are subject to a selection procedure based on academic merit and the number of spaces available. Candidates should have completed a four-year Bachelor's degree, OR a three-year degree plus a one-year full-time Honours degree in the relevant field to enrol for a Masters degree. All applicants should apply to the South African Qualifications Authority (SAQA) to obtain a certificate of evaluation of qualification/s prior to submitting an application to the University. Visit the SAQA website at [www.saqa.org.za](http://www.saqa.org.za) or contact them on +27 (0)12 431 5070. The evaluation process is time consuming and it is advisable to do this well in advance of your application to postgraduate

studies at UKZN. Forms can be downloaded from [www.saqa.org.za/docs/brochures/eq\\_form.pdf](http://www.saqa.org.za/docs/brochures/eq_form.pdf).

## Study visa requirements

International students need to send the following documents to the International Student Office in order to obtain a Certificate of Clearance for the purpose of academic registration:

- A passport valid for at least one year;
- A study visa obtained from a South African Embassy, Consulate or High Commission in the student's home country; and
- Proof of medical health cover.

*Cultural Day, Westville campus.*



The eligibility of international students for study visas will depend on the assessment of the following documents:

- A letter of acceptance from UKZN
- A letter from the University in support of your study visa
- The relevant application fee (this will depend on the Embassy in your country)
- Proof of financial means
- Proof of a South African Medical Health Cover
- Proof of residence in South Africa
- Yellow fever vaccination (if coming from/ travelling through an endemic country)
- A police clearance certificate (not more than three months old)
- Repatriation fee or a return ticket (original proof of payment)
- Valid study visa (when renewing).

The conditions of entry and stay in South Africa for all international students is that they should have in their possession a valid study visa issued in terms of the South African Immigration Act, 2002.

### **When to apply for a study visa**

Prior to leaving for South Africa, applicants must approach the relative authority in their home countries to obtain a study visa. In terms of current South African legislation, South African universities are not allowed to register international students who do not hold valid study visas. Study visas cannot be applied for in South Africa. It is imperative that students

await the outcome of their applications for study visas in their countries of origin or residence. Study visas are renewed prior to expiry.

### **Where to go to apply for a study visa**

You are required to apply for a study visa at the South African High Commission, Embassy, Consulate or Trade Mission in your country of origin. If there is no South African representative in your country, you must apply to the South African High Commission, Embassy, Consulate or Trade Mission nearest to your home country.

### **When do you apply for a study visa?**

You may make an application for a study visa once you have received a letter from the University offering you a place to study, together with a letter in support of an application for a study visa. Study visas can take 4-8 weeks to process and it is advisable to make study visa applications well in advance.

### **How do you apply for a study visa?**

1. Collect the appropriate study visa application from the South African Embassy, Consulate, High Commission or Trade Mission in your country.
2. Complete and return the study visa application to the office where you collected the form initially, together with the required documents.

You are advised to submit the above





*Dr Julia Styles (seated front right) at an International Plant Breeding Workshop in Kenya.*

documentation as soon as possible to the South African High Commission, Embassy, Consulate or Trade Mission. Do not send the above documents to UKZN. Please keep copies of all documentation submitted for your reference and future use.

### Accommodation

Applications for residence accommodation should be made at the time of application. The Student Housing Offices assist students to find off-campus accommodation. The cost of off-campus accommodation varies depending on location and facilities available. In this regard students should take into account the cost of transport to campus.

Contact: Nomzamo Mkhize on [mkhizen1@ukzn.ac.za](mailto:mkhizen1@ukzn.ac.za) • Tel: +27 (0)31 260 1294

### Financial aid

Regrettably, financial aid is not available to international students. International students are advised to make enquiries from their

Ministries of Education or Scholarship Offices at universities in their country of origin.

### Refugee applicants

- **Procedures:** You should be in possession of a valid Section 41 permit/ Refugee identity document which grants you permission to study. Application procedures and application fees as for local students are applicable. When submitting an application please include:
  - Payment of the local application fee
  - Certified English translations of high school/university documents. The Alliance Francaise assists with French to English translations. Please contact them to establish the cost ([www.alliance.org.za](http://www.alliance.org.za)).
- **Financing your studies:** Scholarships administered by the United Nations High Commission for Refugees are limited and few students succeed in securing a scholarship. The few who do succeed in

securing a scholarship should be willing to save and/or work during vacations to contribute to study expenses. Those who do not secure a scholarship may wish to consider less expensive study options e.g. correspondence study, which allows you to work full-time and to finance your own studies.

## International Student Offices

In addition to the official response to the University, successful applicants who will be staying in residence should email or phone the International Student Office to advise their date of arrival.

### Pietermaritzburg

#### Ms Marie-Anna Marais

Head: International Student Office,  
Pietermaritzburg

Tel: +27 (0)33 260 5194

Fax: +27 (0)33 260 6024

Email: [marais@ukzn.ac.za](mailto:marais@ukzn.ac.za)

### Westville

#### Dr Prem Ramlachan

Head: International Student Office, Westville

Tel: +27 (0)31 260 7253/2641

Fax: +27 (0)31 260 7638

Email: [ramlachanp@ukzn.ac.za](mailto:ramlachanp@ukzn.ac.za)

#### Ms Vanuja Krishna

International Student Officer

Tel: +27 (0)31 260 8223

Fax: +27 (0)31 260 7638

Email: [krishnav@ukzn.ac.za](mailto:krishnav@ukzn.ac.za)

### Howard College

#### Ms Nombulelo Bezu

Head: International Student Office,  
Howard College

Tel: +27 (0)31 260 2205

Fax: +27 (0)31 260 3715

Email: [bezun@ukzn.ac.za](mailto:bezun@ukzn.ac.za)

#### Ms Iris Gerber

International Student Officer

Tel: +27 (0)31 260 2819

Fax: +27 (0)31 260 3715

Email: [gerberi@ukzn.ac.za](mailto:gerberi@ukzn.ac.za)

## English proficiency

UKZN is an English-medium university. Its language policy requires that all applicants, who are not from an English speaking country or have not been educated in an English speaking country, must demonstrate competence in English through one of the following:

- A pass in an examination equivalent to English Higher Grade (First or Second Language) at South African



*Prof. Deenan Pillay presenting a paper on 'HIV Drug Resistance – Biology, Epidemiology and Impact'.*

Senior Certificate level (matriculation). Equivalencies are established by the South African Matriculation Board.

- A pass in English at GCE A-level, or O-level (C symbol or higher), or International Baccalaureate.

International applicants who do not satisfy these requirements, and for whom English is a foreign language, must either:

- Attain an overall score of 7.0 (for graduate students) or 6.0 (for undergraduates) on the International English Language Testing System (IELTS). For information on IELTS test dates, venues and costs, contact the British Council through your closest British Embassy or Consulate, or consult [www.britishcouncil.org](http://www.britishcouncil.org).
- Attain a test score of at least 550 on the

paper version of the Test of English as a Foreign Language (TOEFL) or a score of at least 80 on the iBT (electronic) version of the test. For information about test dates, venues and costs, contact the United States Information Service (USIS) or the US Embassy in your home country; or contact TOEFL direct at [toefl@ets.org](mailto:toefl@ets.org) or consult [www.toefl.org](http://www.toefl.org).

The UKZN Language Centre provides a testing service and English language courses for those who do not meet these requirements. After testing, students whose scores are comparable to the required IELTS or TOEFL scores can apply to enter a degree programme. Those who do not are advised to spend one or two semesters learning English in the Language Centre.



*UKZN's Farmers Support Group (FSG) promotes beekeeping at Msinga in an effort to facilitate food security.*

For further information on Language Centre services, course costs, etc. please contact:

**Durban**

The Coordinator, Language Centre, Access Programme, Howard College Campus, UKZN, Durban, 4041

Tel: +27 (0)31 260 1130/2677

Fax: +27 (0)31 260 2967

Email: [dace@ukzn.ac.za](mailto:dace@ukzn.ac.za)

**Medical health cover**

- Medical health cover is one of the essential immigration requirements when applying for a study visa at the South African High Commission in your home country. It is a compulsory requirement for the University of KwaZulu-Natal.

*Participants at an Applied Poverty Reduction Assessment workshop.*

Students cannot register for the academic year without medical health cover.

**Momentum Health** and **CompCare** (registered with the South African Medical Aid Scheme) are the two options available to UKZN students. It is essential to make the necessary financial arrangements for medical health cover prior to applying for a study visa. Ensure that you advise your sponsor of this requirement as soon as you receive your acceptance letter. **A letter indicating medical health cover sponsorship is not acceptable.** The sponsor must organise payment for the required medical health cover directly with the medical health care provider. UKZN has signed an agreement with ABSA Health Care Consultants, who have



been commissioned by the International Education Association of South Africa (IEASA) to undertake studies and provide guidance on the use of medical health cover providers. Momentum Health and CompCare are the only two options available to the UKZN students, and as repatriation is an essential requirement for Immigration/visa purposes, it is included in these two medical health covers. **From 2015 UKZN will only accept the two above mentioned medical health care providers.**

- In 2015 each student must have medical health cover, valid from February to November, 10 months, for the full academic year
- If the student is at UKZN for one

semester, five months medical health cover is required

- **Medical students** must have medical health cover, from January to November, 11 months of each academic year.
- **You cannot register without providing the relevant International Student Office (ISO) with proof of medical health cover and a valid study permit.**
  - CompCare Wellness – the Networx Option: [www.studentplan.co.za](http://www.studentplan.co.za)  
Email: [mickey.dewet@universal.co.za](mailto:mickey.dewet@universal.co.za)  
Tel: +27 (0)86 122 2777/+27 (0)84 700 9748/  
+27 (0)11 208 1252
  - Momentum Health – Ingwe option  
[www.ingwehealth.co.za](http://www.ingwehealth.co.za)  
Email: [antoinette.nell@momentum.co.za](mailto:antoinette.nell@momentum.co.za)  
Tel: +27 (0)861 200 100/+27 (0)31 573 4189.

*Family members supporting graduates.*



## College of

# Agriculture, Engineering and Science

## Qualifications in Engineering, Construction Management and Land Surveying

Tel: +27 (0)31 260 1668

### School of Engineering

#### Doctor of Philosophy

- **A Doctor of Philosophy degree by research** can be undertaken in the various programmes as follows:
  - Agricultural, *Pietermaritzburg*
  - Chemical, *Howard College*
  - Civil, *Howard College*
  - Computer, *Howard College*
  - Electrical, *Howard College*
  - Electronic, *Howard College*
  - Land Surveying, *Howard College*
  - Mechanical, *Howard College*
  - Property Development, *Howard College*

#### Master of Science in Engineering

- **A Masters degree in research** can be undertaken in the various programmes in Engineering as follows:
  - Agricultural, *Pietermaritzburg*
  - Chemical, *Howard College*
  - Civil, *Howard College*
  - Computer, *Howard College*
  - Construction Management, *Howard College*
  - Electrical, *Howard College*
  - Electronic, *Howard College*

- **Master of Science in:**

- Land Surveying, *Howard College*
- Mechanical, *Howard College*
- Quantity Surveying, *Howard College*

## Qualifications in Science and Agriculture

### Pietermaritzburg Campus

#### Honours and Postgraduate Diplomas

Tel: +27 (0)33 260 5217

Email: [opperman@ukzn.ac.za](mailto:opperman@ukzn.ac.za)

#### Masters and PhD

Tel: +27 (0)33 260 6243/5811

Fax: +27 (0)33 260 6335

Email: [higherdegrees1@ukzn.ac.za](mailto:higherdegrees1@ukzn.ac.za)  
[higherdegrees2@ukzn.ac.za](mailto:higherdegrees2@ukzn.ac.za)

- **Bachelor of Science (Honours)**

- Applied Mathematics
- Biochemistry
- Biological Sciences
- Chemistry
- Computer Science
- Crop Science
- Ecological Sciences (Rangeland & Wildlife Conservation Stream)
- Environmental Science
- Geography and Environmental Management
- Environmental Earth Science
- Genetics

- Horticultural Science
- Hydrology
- Mathematics
- Microbiology
- Physics
- Plant Pathology
- Soil Science
- Statistics
- **Bachelor of Agriculture (Honours)**
- **Bachelor of Agricultural Management Honours**
- **Postgraduate Diplomas**
  - Postgraduate Diploma (Community Nutrition)
  - Postgraduate Diploma (Dietetics)
  - Postgraduate Diploma (Food Security)
- **Master of Science**
  - Applied Mathematics
  - Biochemistry
  - Biological Sciences
  - Biometry
  - Botany
  - Chemical Technology
  - Chemistry
  - Computational Physics
  - Computer Science
  - Ecology
  - Entomology
  - Ethnobotany
  - Food Security
  - Genetics
  - Geography
  - Grassland Science
  - Hydrology



*Delegates at the launch of the new MSc Programme in Cultivar Development for Africa.*

- Mathematics
- Microbiology
- Molecular & Cellular Biosciences
- Physics
- Plant Molecular Biology & Physiology
- Plant Pathology
- Soil Science
- Statistics
- Wildlife Science
- Zoology
- **Master of Science in Agriculture**
  - Agribusiness



*Prof. Buckley (centre) of the Pollution Research Group (PRG) showcased the Sanitation Facilities and data available in Durban at the Reinvent the Toilet Fair: India.*



*Mr Timothy Rowell and Mr Trevor Lorimer from the Discipline of Electrical, Electronic and Computer Engineering, exhibited their power line robot at the IEEE PES Transmission and Distribution Exposition, which was held in Chicago from 14-17 April 2014.*

- Agricultural Economics
- Agricultural Production
- Agricultural and Environmental Instrumentation
- Agrometeorology
- Animal Science
- Community Resources
- Consumer Studies
- Crop Science
- Cultivated Pastures
- Environmental Science
- Food Processing
- Food Science
- Grassland Science
- Horticultural Science
- Plant Breeding
- Plant Pathology
- Poultry Science
- **Master of Agricultural Management**
- **Master of Agriculture**
  - Food Security
  - Agricultural Extension & Rural Resource Management

- **Master of Science (Biological Systems)**
- **Master of Science in Dietetics**
- **Master of Science in Human Nutrition**
- **Doctor of Philosophy**
  - Includes all disciplines listed in Masters above.

### Westville Campus

#### Honours

Tel: +27 (0)31 260 7515

Email: [opperman@ukzn.ac.za](mailto:opperman@ukzn.ac.za)

#### Masters and PhD

Tel: +27 (0)31 260 2219/3220

Fax: +27 (0)31 260 7780/1345

Email: [nadesanj@ukzn.ac.za](mailto:nadesanj@ukzn.ac.za)  
[mohant@ukzn.ac.za](mailto:mohant@ukzn.ac.za)

- **Bachelor of Science (Honours)**
  - Applied Mathematics
  - Biochemistry
  - Biological Sciences
  - Cellular Biology
  - Chemistry
  - Computer Science
  - Environmental Science
  - Genetics
  - Geography and Environmental Management
  - Geology
  - Marine Biology
  - Mathematics
  - Microbiology
  - Physics
  - Statistics





Participants at the Smart Grid Research Seminar.

• **Master of Science**

*By dissertation:*

- Applied Mathematics
- Biology
- Biochemistry
- Chemistry
- Computer Science
- Environmental Science
- Financial Management
- Geography
- Geology
- Mathematics
- Microbiology
- Physics
- Statistics

• **Doctor of Philosophy**

*By dissertation:*

- Applied Mathematics
- Biology
- Biochemistry
- Chemistry
- Computer Science
- Environmental Science
- Financial Management
- Geography
- Geology
- Mathematics
- Microbiology
- Physics
- Statistics



Doctoral graduate Peter Calverley (centre right) has spent the last five years studying ecology of the Nile crocodile – a threatened species in southern Africa.

**CLOSING DATES: SCIENCE AND AGRICULTURE**

**Honours**

For entry into semester 1

31 October of previous year (International)  
30 November of previous year (Local)

**Masters coursework**

For entry into semester 1

31 October of previous year  
30 April of current year (International)

For entry into semester 2

31 May of current year (Local)

**Masters and Doctoral studies by research**

Confirm closing dates with School concerned

## College of Health Sciences

### School of Health Sciences

#### Westville Campus

Tel: +27 (0)31 260 8280/7906

Fax: +27 (0)31 260 7872

#### Ms Phindile Nene

Email: [nenep1@ukzn.ac.za](mailto:nenep1@ukzn.ac.za)

#### Ms Thuli Khumalo

Email: [khumalot8@ukzn.ac.za](mailto:khumalot8@ukzn.ac.za)

#### Discipline of Audiology

- Master of Communication Pathology (Audiology) (Research)
- Doctor of Philosophy

#### Discipline of Occupational Therapy

- Master of Hand Rehabilitation (Coursework)
- Master of Occupational Therapy (Research)
- Master of Philosophy in Group Therapy (Coursework)
- Doctor of Philosophy

#### Discipline of Speech-Language Pathology

- Master of Communication Pathology (Speech-Language Pathology) (Research)
- Doctor of Philosophy

#### Multi-discipline postgraduate programmes and qualifications

- Master of Philosophy (Therapeutic Group Work)

#### Discipline of Pharmaceutical Sciences

- Master of Pharmacy
- Master of Medical Science (Pharmaceutics) (Research)
- Master of Medical Science (Pharmaceutical Chemistry)
- Master of Medical Science (Pharmacy Practice) (Research)
- Online Masters in Pharmacy (Pharmacy Practice/Pharmacoeconomics)
- Master of Medical Science (Pharmacology)
- Doctor of Philosophy

#### Multi-discipline postgraduate programmes and qualifications

- Online Masters in Health Sciences

#### Discipline of Physiotherapy

- Master of Physiotherapy (Research)
- Doctor of Philosophy

#### Discipline of Sport Science, Biokinetics and Exercise Science

- Bachelor of Sport Science Honours (Biokinetics)
- Bachelor of Sport Science Honours (Exercise Science)
- Bachelor of Sport Science Honours (Leisure Studies)
- Master of Sport Science (Research)
- Doctor of Philosophy

**Discipline of Optometry**

- Master of Optometry (Research)
- Doctor of Philosophy

**Discipline of Dentistry**

- Master of Dentistry (Research)
- Doctor of Philosophy

**School of Laboratory Medicine and Medical Sciences**

Tel: +27 (0)31 260 7078/7247/8602

Fax: +27 (0)31 260 7132

**Ms Prathna Dudhrajh**

Email: [dudhrajhp@ukzn.ac.za](mailto:dudhrajhp@ukzn.ac.za)

**Ms Bongwiwe Mokoena**

Email: [mokoena@ukzn.ac.za](mailto:mokoena@ukzn.ac.za)

**Discipline of Clinical Anatomy**

- Bachelor of Medical Science Honours (Anatomy)
- Master of Medical Science (Clinical Anatomy) (Research)
- Doctor of Philosophy

**Discipline of Human Physiology**

- Bachelor of Medical Science Honours (Physiology)
- Master of Medical Science (Physiology) (Research)
- Master of Medical Science in Sports Medicine (Coursework)
- Doctor of Philosophy

**Discipline of Medical Biochemistry**

- Bachelor of Medical Science Honours
- Medical Biochemistry
- Master of Medical Science (Medical Biochemistry) (Research)
- Doctor of Philosophy



*Preparing samples for testing.*

### Discipline of Medical Microbiology and Infection Prevention and Control

- Bachelor of Medical Science Honours (Medical Microbiology/Infection Prevention Control)
- Master of Medical Science (Medical Microbiology) (Research)
- Doctor of Philosophy
- Master in Medicine in the following:
  - Anatomical Pathology
  - Chemical Pathology
  - Forensic Medicine
  - Haematology
  - Virology

All of the above are also offered at PhD level.

### HIV Pathogenesis Programme

- Master in Medical Science
- Doctor of Philosophy

### Optics and Imaging

- Master in Medical Science
- Doctor of Philosophy

### Discipline of Virology

- Master in Medical Science
- Doctor of Philosophy

## School of Nursing and Public Health

### Howard College Campus

Tel: +27 (0)31 260 2255/1075/2834

Fax: +27 (0)31 260 1543

#### Ms Michelle Ramlal

Email: [ramlalm@ukzn.ac.za](mailto:ramlalm@ukzn.ac.za)

#### Mrs Caroline Dhanraj

Email: [dhanjac@ukzn.ac.za](mailto:dhanjac@ukzn.ac.za)



*College of Health Sciences students provided a much needed service to Comrades Marathon runners who had been running for over three hours before they could reach the UKZN stand.*

#### Ms Devi Arumugan

Email: [arumugand@ukzn.ac.za](mailto:arumugand@ukzn.ac.za)

- Bachelor of Nursing Honours
- Master of Nursing (Advanced Midwifery and Women's and Child Health) (Coursework and Research)
- Master of Nursing (Critical Care and Trauma) (Coursework and Research)
- Master of Nursing (Community Health) (Coursework and Research)
- Master of Nursing (Nursing Education) (Coursework and Research)
- Master of Nursing (Gerontology) (Coursework and Research)
- Master of Nursing (Health Service Administration) (Coursework and Research)
- Master of Nursing (Psychiatric/Mental Health) (Coursework and Research)
- Master of Nursing (Nursing Research) (Coursework and Research)

- Master of Medical Science in Medical Informatics
- Master of Medical Science in Telemedicine
- Master of Public Health
- Master of Medicine in:
  - Family Medicine
  - Public Health
  - Occupational & Environmental Health
- Doctor in Philosophy
- Postgraduate Diplomas in:
  - Medical Informatics
  - Telemedicine
  - Occupational & Environmental Health
  - Public Health
  - Family Medicine

**School of Clinical Medicine**  
**Nelson R Mandela School of Medicine**

Tel: +27 (0)31 260 4999 (PG Dip & MMedSc – Clinical HIV/AIDS Management)  
 Tel: +27 (0)31 260 4495/4745/4416 (MMed, MMed Sc, PhD)  
 Fax: +27 (0)31 260 4723  
 Email: [scmpgrad@ukzn.ac.za](mailto:scmpgrad@ukzn.ac.za)

- Master of Medical Science (MMed Sc) (Research) (all disciplines)
- Master of Medical Science in Clinical HIV/AIDS Management
- Master of Medicine in:
  - Anaesthetics
  - Cardiothoracic Surgery
  - Cardiology
  - Dermatology
  - Medicine

- Neurology
- Neurosurgery
- Obstetrics and Gynaecology
- Ophthalmology
- Orthopaedic Surgery
- Otorhinolaryngology
- Paediatric Surgery
- Paediatrics and Child Health
- Plastic and Reconstructive Surgery
- Psychiatry
- Radiology
- Radiotherapy and Oncology
- Surgery
- Urology
- Doctor of Philosophy (PhD)
- Postgraduate Diplomas in:
  - Clinical HIV/AIDS Management



*Prof. Cephas Musabayane (top left) with PhD students.*

**CLOSING DATE: HEALTH SCIENCES**

Online programmes: 12 September  
 Bachelor of Sport Science Honours: 30 September  
 All other programmes: 30 November

## College of Humanities

### School of Education Howard College Campus

#### Doctor of Philosophy

Tel: +27 (0)31 260 7865  
Fax: +27 (0)31 260 7594  
Email: [education@ukzn.ac.za](mailto:education@ukzn.ac.za)

#### Edgewood Campus

### Postgraduate Certificate in Education, Bachelor of Education Honours Master of Education

Tel: +27 (0)31 260 3436  
Fax: +27 (0)31 260 7594  
Email: [education@ukzn.ac.za](mailto:education@ukzn.ac.za)

#### Pietermaritzburg Campus

### Bachelor of Education Honours Master of Education

Tel: +27 (0)33 260 6245  
Fax: +27 (0)33 260 6228  
Email: [naidooa@ukzn.ac.za](mailto:naidooa@ukzn.ac.za)

- **The Bachelor of Education Honours (BEd Hons)** is offered in the following specialisations:
  - Adult Education
  - Curriculum Studies
  - Education Leadership, Management and Policy
  - Educational Psychology
  - Education and Development
  - Gender Education
  - History Education
  - Language and Media Studies



*Prof. Cheryl Potgieter with eight Humanities students who attended the Model Y20 South African Conference in Cape Town.*

- School Guidance and Counselling
- Science and Mathematics Education
- Social Justice Education
- Social Science Education
- Teacher Development Studies
- Technology Education
- **Master of Education (MEd)** is offered in the following specialisations:
  - Adult Education
  - Curriculum Studies
  - Education Leadership, Management and Policy
  - Educational Psychology
  - Education and Development
  - Gender Education
  - History Education
  - Higher Education
  - Language and Media Studies
  - Mathematics Education
  - Science Education
  - Social Justice Education
  - Social Science Education
  - Teacher Development Studies
  - Technology Education

**CLOSING DATES: EDUCATION**

Postgraduate Certificate in Education	30 October of previous year
Postgraduate Diploma in Education	30 November of previous year
Bachelor of Education Honours (BEdHons)	30 November of previous year
Master of Education (MEd)	30 November of previous year
Doctor of Philosophy (PhD)	31 October of previous year

- **Postgraduate Certificate in Education (PGCE)** is offered in the following specialisations:
  - Further Education and Training (FET)
  - Senior Phase of General Education and FET
  - Senior Phase of General Education and Training
  - Foundation Phase

**Programmes in Humanities, Development and Social Sciences**

**Howard College Campus**

Tel: +27 (0)31 260 2133/3565  
 Fax: +27 (0)31 260 2372  
 Email: [bekwat@ukzn.ac.za](mailto:bekwat@ukzn.ac.za)  
[mphambukeli@ukzn.ac.za](mailto:mphambukeli@ukzn.ac.za)

**Pietermaritzburg Campus**

Tel: +27 (0)33 260 5699  
 Fax: +27 (0)33 260 5712  
 Email: [jacobsen@ukzn.ac.za](mailto:jacobsen@ukzn.ac.za)

**School of Applied Human Science**

**Honours, Masters, PhD and Postdoctoral study** offered in:

- Childcare and Protection, *Howard College*
- Criminology, *Howard College*
- Culture, Communication and Media Studies, *Howard College*
- Health Promotion, *Howard College*
- Psychology: Clinical, *Howard College| Pietermaritzburg*; Educational, *Pietermaritzburg*; Industrial, *Howard College*; Research, *Howard College and Pietermaritzburg*
- Social Work, *Howard College*

**School of Arts**

**Honours, Masters, PhD and Postdoctoral study** offered in:

- Afrikaans & Nederlands, *Howard College| Pietermaritzburg*
- Art History, *Pietermaritzburg*
- Digital Media, *Pietermaritzburg*
- Drama and Performance Studies, *Howard College|Pietermaritzburg*
- Educational Linguistics, *Pietermaritzburg*
- English Studies (incl. Southern African Literature), *Howard College| Pietermaritzburg*
- Visual Arts, *Pietermaritzburg*
- French, *Howard College|Pietermaritzburg*
- German, *Howard College*
- isiZulu (mother-tongue and non-mother-tongue), *Howard College|Pietermaritzburg*
- Linguistics, *Howard College*
- Media and Cultural Studies, *Howard*

College|Pietermaritzburg

- Music, *Howard College*
- Translation Studies, *Howard College*

## School of Built Environment and Development Studies

**Honours, Masters, PhD and Postdoctoral study** offered in:

- Architecture, *Howard College*
- Community Development, *Howard College*
- Development Studies, *Howard College*
- Housing, *Howard College*
- Population Studies, *Howard College*
- Town and Regional Planning, *Howard College*
- Urban and Regional Planning: Development Planning, Environment and Planning, *Howard College*



Architecture Lecturer Ms Bridget Horner and two students, Mr Mongezi Ncube and Ms Nadiyah Moodley travelled to Belgium to work with the University of Liege on their submission for an international design competition based on Warwick Junction in Durban.

## School of Religion, Philosophy and Classics

**Honours, Masters, PhD and**

**Postdoctoral study** offered in:

- African Christianity, *Pietermaritzburg*
- African Theology, *Pietermaritzburg*
- Biblical Studies, *Pietermaritzburg*
- Catholic Theology, *Pietermaritzburg*
- Christian Spirituality, *Pietermaritzburg*
- Classics (Greek, Latin, Classical Civilisation), *Howard College| Pietermaritzburg*
- Cognitive Science, *Howard College| Pietermaritzburg*
- Comparative & Applied Ethics, *Pietermaritzburg*
- Ethics, *Pietermaritzburg*
- Gender and Religion, *Pietermaritzburg*
- History of Christianity, *Pietermaritzburg*
- Historical & Modern Theologies, *Pietermaritzburg*
- Industrial Mission, *Pietermaritzburg*
- Ministerial Studies, *Pietermaritzburg*
- Philosophy, *Howard College| Pietermaritzburg*
- Religion and Social Transformation, *Howard College*
- Religious Studies, *Howard College| Pietermaritzburg*
- Religion Education, *Howard College*
- Systematic Theology, *Pietermaritzburg*
- Theology and Development, *Pietermaritzburg*
- Theology, *Pietermaritzburg*





The UKZN Howard College Drama Department proudly presented *Death, Dysfunction and a Duck* by legendary yet controversial American award-winning playwright, Christopher Durang.

## School of Social Sciences

**Honours, Masters, PhD and Postdoctoral study** offered in:

- Anthropology, *Howard College/ Pietermaritzburg*
- Cultural and Heritage Tourism, *Howard College*
- Conflict, Transformation and Peace Studies, *Howard College*
- Economic History and Development Studies, *Howard College*
- Gender Studies, *Howard College/ Pietermaritzburg*
- Government, Business and Ethics, *Pietermaritzburg*
- History, *Howard College*
- Industrial, Organisational and Labour Studies, *Howard College*
- Library and Information Studies, *Pietermaritzburg*
- International Relations, *Howard College/ Pietermaritzburg*
- Policy and Development Studies, *Pietermaritzburg*

- Political Science, *Howard College/ Pietermaritzburg*
- Public Policy, *Howard College*
- Social Policy, *Howard College*
- Sociology, *Howard College/ Pietermaritzburg*

## Postgraduate Diplomas in Arts and Social Science

- Drama and Performance Studies, *Pietermaritzburg*
- Visual Arts, *Pietermaritzburg*
- Information Studies, *Pietermaritzburg*
- Psychology, *Pietermaritzburg*
- Records and Archival Management, *Pietermaritzburg*
- Community Development, *Howard College*

## Professional and Vocational Degrees Howard College and Pietermaritzburg

- BSocSc Hons (Psychology)

## Howard College only

- MArch, PhD, MTRP, MHous, MScURP (DevPI)



UKZN Masters in Jazz Performance student Ildo Nandja.

- MScURP (EnvPI), MScURP, MDevStud, MPopStud, PhD, MSW (Welfare Policy and Development), MSW (Research), PhD, MCHPR (Child Care and Protection).

**NOTE:**

- Degree programmes comprise course-work modules and a dissertation.
- Uniform modular structures permit both disciplinary and interdisciplinary programme 'packages'.
- Several programmes are aimed not only at the academy, but also at the public and private sectors.
- Students may enrol for components of programmes as transferable credits.
- Supervision is provided, also in Masters and PhD research by thesis.
- In Music, both the MMus and the PhD may also be obtained by performance or composition.
- Not every programme/speciality will necessarily be offered on both campuses and in every year. Please confirm availability.

**CLOSING DATES: HUMANITIES**

**Howard College**

Psychology	Honours	31 October of previous year
	Masters (coursework)	11 July of previous year
Postgraduate Diplomas, Honours and Masters by coursework programmes in other disciplines	For entry into semester 1	30 September of previous year
	For entry into semester 2	30 April of current year
Masters and PhD (Research)	Please confirm closing date with School concerned	

**Pietermaritzburg**

Psychology	Honours	31 October of previous year
	Masters (coursework)	11 July of previous year
Theology	Honours and Masters (coursework and research)	31 August of previous year
	Students are also required to complete the School's application form. Forms can be downloaded from <a href="http://www.sorat.ukzn.ac.za/theology/forms/main.htm">www.sorat.ukzn.ac.za/theology/forms/main.htm</a>	
	Second semester entry is not allowed	
Postgraduate Diplomas, Honours and Masters by coursework programmes in other disciplines		31 October of previous year
Masters and PhD (Research)	Please confirm closing date with School concerned	

## College of Law and Management Studies

### School of Law

#### Howard College Campus

Tel: +27 (0)31 260 3046/8036

Fax: +27 (0)31 260 3371

Email: [lawpostgrad@ukzn.ac.za](mailto:lawpostgrad@ukzn.ac.za)

#### Pietermaritzburg Campus

Tel: +27 (0)33 260 6257

Fax: +27 (0)33 260 5015

Email: [lawpostgrad@ukzn.ac.za](mailto:lawpostgrad@ukzn.ac.za)

The School of Law offers various Masters Degrees, a Postgraduate Diploma, a PhD and LLD at Howard College and Pietermaritzburg Campuses. The onus is on the applicant to ascertain and satisfy the admission requirements of the centre in which the applicant wishes to register. Further information and entrance requirements are available from the respective campuses.

The following programmes are offered, although it must be noted that the University cannot guarantee that the LLM courses listed will be offered in each year; staff availability and student demand will determine which courses are offered. Closing dates are provided at the end of the list.

#### Master of Laws

- Advanced Criminal Justice, *Howard College/Pietermaritzburg*
- Business Law, *Howard College/Pietermaritzburg*

- Child Care and Protection, *Howard College* (also inter-disciplinary offering)
- Constitutional & Human Rights Litigation, *Howard College*
- Environmental Law, *Howard College/Pietermaritzburg*
- Labour Studies, *Howard College*
- Maritime Law, *Howard College*
- Medical Law, *Howard College*
- Taxation, *Howard College*

#### Postgraduate Diploma

- Forensic Investigation and Criminal Justice, *Howard College*

Courses offered under each programme include a compulsory Research Methodology module and a dissertation together with three specialised modules.

- **LLM Adv Criminal Justice**, *Howard College/Pietermaritzburg*
  - Advanced Criminal Law
  - Criminal Process
  - Criminology
  - International Criminal Law
  - Sentencing
- **LLM Business Law**, *Howard College/Pietermaritzburg*
  - Advanced Contract Law
  - Advanced Corporate Law
  - Advanced Insolvency Law
  - Advanced Labour Law (*Pietermaritzburg only*)

- Advanced Tax Law, *Pmb only*
- Consumer Law in South Africa
- International Trade Law
- Intellectual Property Law
- **LLM Childcare and Protection**, *Howard College* (also inter-disciplinary offering with Dept. of Social Work)
  - Children's Rights (Local and International Perspectives)
  - The Roles of Professionals in Proceedings Affecting Children
  - Child Care Policy and Legislation
  - Crime: Children as Victims and Perpetrators
  - Emerging Medico-Legal and Social Aspects of Childcare and Protection
- **LLM Constitutional & Human Rights Litigation**, *Howard College*
  - Advanced Constitutional Law
  - Constitutional and Human Rights Litigation
  - History and Philosophy of Constitutionalism
  - Politics of Law
- **LLM Environmental Law**, *Howard College/Pietermaritzburg*
  - Land Use & Planning Law
  - Natural Resources Law
  - Ocean and Coastal Law
  - Pollution Control Law
  - International Environmental Law
- **LLM Labour Studies**, *Howard College*
  - Advanced Labour Law
  - Employment Discrimination Law
  - Labour Dispute Resolution
- **LLM Maritime Law**, *Howard College*
  - Admiralty Law
  - International Trade Law
  - Carriage of Goods by Sea
  - Incidents of Navigation
- **LLM Medical Law**, *Howard College*
  - Bio-ethics and the Law
  - Forensic Medicine
  - Law and Medical Practice
  - HIV/AIDS, Human Rights and the Law
- **LLM Taxation**, *Howard College*
  - Advanced Tax 1
  - Advanced Tax 2
  - Donations Tax and Estate Duty
- **Postgraduate Diploma in Forensic Investigation and Criminal Justice**, *Howard College*
  - Criminal Justice A
  - Criminal Justice B
  - Forensic Auditing
  - Research Project
- **Research Degrees**, *Howard College/Pietermaritzburg*
  - Masters of Laws (LLM)
  - Doctor of Philosophy (PhD)
  - Doctor of Laws (LLD)

**CLOSING DATES: LAW**

Postgraduate Diplomas	For entry into semester 1	30 November of previous year
Masters degrees by coursework	For entry into semester 1	30 November of previous year
Masters and PhD by research	Please confirm closing date with Schools concerned	

## School of Accounting, Economics and Finance Pietermaritzburg Campus

Tel: +27 (0)33 260 6486

Email: [saefpostgrad@ukzn.ac.za](mailto:saefpostgrad@ukzn.ac.za)

- **Qualifications in Accounting**
  - Postgraduate Diploma in Accounting
  - B Com Honours (Accounting)
  - Master of Accounting (Financial Accounting and Taxation)
  - Doctor of Philosophy (PhD) Accounting
- **Qualifications in Economics & Finance**
  - B Com Honours (Finance)
  - B Com Honours (Economics)
- **Research degrees**
  - Master of Commerce (Economics)
  - Master of Commerce (Finance)
  - Doctor of Philosophy (PhD) Economics

### Westville Campus

Tel: +27 (0)31 260 7644/1079/2364

Email: [saefpostgrad@ukzn.ac.za](mailto:saefpostgrad@ukzn.ac.za)

- **Qualifications in Accounting**
  - Postgraduate Diploma in Accounting (Full-time)
  - B Com Honours Accounting (Full-time)
  - Master of Accounting (Financial Accounting)
  - Doctor of Philosophy (PhD) Accounting
- **Qualifications in Economics and Finance**
  - Postgraduate Diploma in Maritime Studies, *Howard College*
  - B Com Honours (Economics)
  - B Com Honours (Finance)
  - M Com in Economics (Coursework and Dissertation)

- M Com in Economics (Research)
- M Com in Finance (Research)
- M Com in Maritime Studies (Coursework and Dissertation), *Howard College*
- PhD in Economics

### Howard College Campus

Tel: +27 (0)31 260 8023

Email: [saefpostgrad@ukzn.ac.za](mailto:saefpostgrad@ukzn.ac.za)

## School of Management, IT and Governance

### Pietermaritzburg Campus

#### Postgraduate Diplomas

Tel: +27 (0)33 260 5870

Email: [pgmgtpmb@ukzn.ac.za](mailto:pgmgtpmb@ukzn.ac.za)

#### Honours Degrees

Tel: +27 (0)33 260 5899

Email: [pgmgtpmb@ukzn.ac.za](mailto:pgmgtpmb@ukzn.ac.za)

#### Masters and Doctorates

Tel: +27 (0)33 260 6152

Email: [cunynghamed@ukzn.ac.za](mailto:cunynghamed@ukzn.ac.za)

#### Postgraduate Diplomas

- Finance, Banking and Investment Banking
- Management
- Marketing
- Marketing and Supply Chain Management

#### Honours Degrees

- B Com Honours (Human Resource Management)
- B Com Honours (Marketing Management)
- B Com Honours (Supply Chain Management)
- B Com Honours (Small Business Development Studies)
- B Com Honours (Management)

- B Com Honours (Information Systems and Technology)
- B Com Honours (Marketing and Supply Chain Management)

### Research degrees

- Master of Commerce (Entrepreneurship) (subject to Supervisor availability)
- Master of Commerce (Human Resource Management)
- Master of Commerce (Information Systems and Technology)
- Master of Commerce (Management)
- Master of Commerce (Marketing)
- Master of Commerce (Supply Chain Management)
- Doctor of Philosophy (PhD) in the fields of:
  - Human Resource Management
  - Information Systems and Technology
  - Management
  - Marketing
  - Supply Chain Management
  - Entrepreneurship (subject to Supervisor availability)

### Westville Campus

Tel: +27 (0)31 260 8162

Email: [pearcea2@ukzn.ac.za](mailto:pearcea2@ukzn.ac.za)

### Qualifications in IS&T

- B Com Honours
- M Com (Research and coursework)
- PhD

### Qualifications in Public Administration

- BAdmin Hons in Public Administration
- Master of Public Administration



*Social Entrepreneur Mr Charles Maisel challenging entrepreneurs to think out of the box at an innovation bootcamp.*

(Coursework)

- Master of Administration (Research)
- Doctor of Administration (Research)

### Postgraduate Diplomas

- Management
- Marketing
- Finance, Banking and Investment Management
- Human Resource Management
- Marketing & Supply Chain Management

### B Com Honours Degrees

- B Com Honours (Employment Relations/ Industrial Relations)
- B Com Honours (Human Resource Development)
- B Com Honours (Human Resource Management)
- B Com Honours (Management)
- B Com Honours (Marketing Management)
- B Com Honours (Marketing and Supply Chain Management)
- B Com Honours (Small Business Development Studies)
- B Com Honours (Supply Chain Management)
- **Master of Commerce (Coursework)**
  - Master of Administration/Commerce in Human Resource Development

- Master of Administration/Commerce in Human Resource Management
- Master of Administration/Commerce in Industrial Relations/Employment Relations
- Master of Commerce in Management
- Master of Commerce in Marketing Management
- Master of Commerce in Human Resource Management (dep. on nos.)
- Master of Commerce in Human Resource Development
- Master of Commerce in Industrial Relations/Employment Relations
- **Master of Commerce (Research)**
  - Entrepreneurship
  - Human Resource Development
  - Human Resource Management
  - Industrial Relations/Employment Relations
  - Management
  - Marketing Management
  - Master of Administration (Research)
  - Public Administration
- **Doctor of Philosophy (PhD) in the fields of Management**
  - Industrial Relations
  - Human Resource Development
  - Human Resource Management

- Management
- Marketing Management
- Entrepreneurship (subject to Supervisor availability)
- Supply Chain Management (subject to Supervisor availability)

**Note: Lectures for the Masters Coursework other than in Public Administration are held in the evenings. Public Administration lectures are offered in block sessions.**

## Graduate School of Business and Leadership

### Westville Campus

Tel: +27 (0)31 260 2784/1615/1383

Fax: +27 (0)31 260 7679

Email: [mojapeloz@ukzn.ac.za](mailto:mojapeloz@ukzn.ac.za) (MBA/Postgrad Dip)

[bullyraj@ukzn.ac.za](mailto:bullyraj@ukzn.ac.za) (Leadership)

[mahomeda@ukzn.ac.za](mailto:mahomeda@ukzn.ac.za) (other)

- Postgraduate Diploma in Entrepreneurship
- Postgraduate Dipoma in Leadership and Management
- Master of Commerce (Research)
- Master of Commerce in Leadership Studies
- Master of Business Administration (MBA)
- Doctor of Business Administration (DBA)
- Doctor of Philosophy (PhD)

### CLOSING DATES: MANAGEMENT STUDIES

Postgraduate Diplomas, Honours and Masters by coursework	For entry into semester 1	30 November of previous year
	For entry into semester 2 (research only)	30 April of current year
Masters and PhD School of Business and Leadership	Confirm closing dates with Schools concerned	

