

UTokyo

THE UNIVERSITY OF TOKYO

The University of Tokyo 2014-15 Contents

03	Message from Our President
04	Why Study at the University of Tokyo
05	Frequently Asked Questions
07	Feature Articles
07	PEAK (Programs in English at Komaba)
09	GSC (Global Science Course)
11	USTEP (University-wide Student Exchange Program)

13 Undergraduate Education

14	Undergraduate Education System
15	College of Arts and Sciences – Junior Division
16	Faculty of Law
17	Faculty of Economics
18	Faculty of Letters
19	Faculty of Education
20	College of Arts and Sciences – Senior Division
21	Faculty of Engineering
22	Faculty of Science
23	Faculty of Agriculture
24	Faculty of Pharmaceutical Sciences
25	Faculty of Medicine
26	Undergraduate Admissions

29 Graduate Schools

30	Graduate Schools for Law and Politics
31	Graduate School of Public Policy
32	Graduate School of Economics
33	Graduate School of Humanities and Sociology
34	Graduate School of Education
35	Graduate School of Arts and Sciences
36	Graduate School of Interdisciplinary Information Studies
37	Graduate School of Frontier Sciences
38	Graduate School of Engineering
39	Graduate School of Information Science and Technology
40	Graduate School of Science
41	Graduate School of Mathematical Sciences
42	Graduate School of Agricultural and Life Sciences
43	Graduate School of Pharmaceutical Sciences
44	Graduate School of Medicine
45	Admission Information for Graduate Schools

47 Degree Programs Offered in English

48	List of Degree Programs offered in English
49	College of Arts and Sciences PEAK (Programs in English at Komaba)
51	Faculty of Science GSC (Global Science Course)
52	Graduate School of Economics
52	Graduate School of Arts and Sciences
53	Graduate School of Science
53	Graduate School of Engineering

57	Graduate School of Agricultural and Life Sciences
57	Graduate School of Medicine
57	Graduate School of Frontier Sciences
58	Graduate School of Information Science and Technology
58	Graduate School of Interdisciplinary Information Studies
59	Graduate School of Public Policy

60 Short-term Programs

61	University-wide Student Exchange Program (USTEP)
61	AIKOM (Abroad in Komaba)
61	International Alliance of Research Universities Global Summer Program (IARU-GSP)
61	Global Japan Studies
62	International Core Research Center for NanoBio (C2CNB) Summer Internship Program
62	University of Tokyo Research Internship Program (UTRIP)
62	The University of Tokyo Summer Internship Program in Kashiwa (UTSIP Kashiwa)
62	UTokyo Innovation Summer Program (TISP)

63 Research Facilities

64	Affiliated Institutes
64	Institute of Medical Science
64	Earthquake Research Institute
65	Institute for Advanced Studies on Asia
65	Institute of Social Science
65	Institute of Industrial Science
66	Historiographical Institute
66	Institute of Molecular and Cellular Biosciences
66	Institute for Cosmic Ray Research
67	Institute for Solid State Physics
67	Atmosphere and Ocean Research Institute
67	Research Center for Advanced Science and Technology
68	Hospitals
68	University-wide Centers
68	TODIAS (Todai Institutes for Advanced Study)
69	Libraries

70 Important Information for International Students

71	Housing
71	Japanese Language Classes
72	Scholarships
73	Tuition Fees
73	Cost of Living in Japan
73	Support Facilities for Students
74	Sports and Recreational Facilities
75	Restaurants, Cafés and Shops

76	Words from Our Members
79	Academic Calendar
81	Three Core Campuses
83	University Data

Quick Reference

Readers of this guide who have particular interests may find this quick reference page useful in achieving their goals. For those seeking information not listed on this page, please see the adjacent contents page for a more detailed listing of the information covered in this guide.

English Features

The University of Tokyo over the years has been looking at ways to improve its ability to develop students with intellectual toughness and personal resilience and for them to become intellectual citizens with a futuristic global outlook, able to lead in today's globalized era. UTokyo has introduced new undergraduate degree programs where all the lessons are given in English and a new students exchange program that overcomes the hurdle of proficiency in the Japanese language. These initiatives are introduced in the special features section on pages 07 to 12.

For Undergraduates

The first two years of the undergraduate curriculum at the University of Tokyo are designed to provide students with fundamental knowledge and basic academic skills. During this time, students study a broad range of liberal arts subjects before moving on to study in specialized fields. With the 4-year PEAK program and the GSC Undergraduate Transfer program which accepts international students into the 3rd year at the Faculty of Science, students studying for a University of Tokyo degree no longer require prior knowledge of the Japanese language, although Japanese is taught as part of the degree programs.

Applicants who wish to study in Japanese 13 – 28

Applicants who wish to take courses in English 47 – 51

For Postgraduates

The 15 graduate schools of the University of Tokyo offer cutting-edge educational and research opportunities in a wide range of fields.

Applicants interested in graduate studies 29 – 46

Applicants interested in graduate programs in English 52 – 59

Short-term Programs

The University of Tokyo has various short-term, non-degree programs provided in English, taught by top-class professors which are available to highly motivated students from all over the world. Some of these programs are restricted to students enrolled at universities with exchange agreements or those that belong to specific global alliances, while others may be limited to undergraduates or postgraduates only. A selection of these programs is listed in this prospectus. More information on the programs is also available on the program websites or the relevant Faculty/Graduate School websites.

Students interested in these programs 60 – 62

Research Students (Kenkyū-sei)

Students wishing to engage in research activities in specialized fields may also apply for affiliation with the University of Tokyo as “research students.” No degrees or qualifications are awarded to research students after the completion of a research term. Please contact the individual departments for more specific details.

Message from Our President

Humanity today is confronted with global problems that can only be overcome by the combined efforts of a global society working in unison. As a university pioneering through innovation, and as a country facing today many of the problems that others will experience tomorrow, it is the public responsibility of the University of Tokyo and of Japan to provide a reliable compass that can lead us to a brighter future.

When I started my six-year term of office as president of the University of Tokyo in April 2009, I presented an action scenario under the title *FOREST 2015*, outlining my vision for the University of Tokyo. I described a university at the 'Forefront' of Japanese academia, a global campus 'Open' to the world and comprised of 'Responsible' individuals working for the good of domestic and global society. I described a university where 'Excellence' in education and research was the driving force behind a 'Sustainable' campus nurturing 'Tough', resilient graduates.

Now entering the final year of my term of office, we are redoubling our efforts to realize the vision laid out in *FOREST 2015*. We are accelerating improvements in the quality of our educational system, sharing of the rich outcomes of our innovative research through cooperation with industry and society, and increasing efforts towards the joint creation and preservation of knowledge with society. We continue to actively provide the best of our education to a global audience through strengthened alumni networks, expanded strategic partnerships with key foreign universities and participation in online education platforms.

FOREST 2015 has opened up the University to the world, strengthened our ties and the exchange of ideas with our partners and enriched our campus. I will continue to exert my utmost effort to move us closer to the vision of a global campus: a University of Tokyo that is a tough and responsible global citizen, a university that confronts the challenges of the future head-on and that creates and shares its knowledge in partnership with the world. I hope that you will choose to be a part of that bright future.

濱田 純一

JUNICHI HAMADA

President
The University of Tokyo



Why Study at the University of Tokyo

Success Built on Tradition

Founded in 1877, the University of Tokyo is the oldest national university in Japan. Over the course of its long and distinguished history, the university has produced some of the most outstanding scholars, scientists, and social and political leaders of Japan, including eight Nobel laureates, 16 prime ministers of Japan, and one Fields Medal winner.

One of the most important missions of the University of Tokyo in the twenty-first century is to strengthen its international outlook. The university is actively expanding its network with leading research universities around the world and increasing the number of degree programs that can be completed entirely in English.



Tradition and Innovation Side by Side

As Japan's most comprehensive research university, the University of Tokyo has ten undergraduate faculties, 15 graduate schools and 26 research institutes. More than 5,600 faculty members teach approximately 14,000 undergraduate students and an almost equal number of graduate students. The University of Tokyo has three main campuses in the Tokyo region and additional research facilities across Japan. It also has offices outside Japan such as in Beijing, China, and Bangalore, India.

The faculty members of the University of Tokyo are engaged in the most advanced research in a wide variety of fields. Our strength lies in interdisciplinary approaches to pressing global issues such as disaster reconstruction or climate change and renewable energy. The University of Tokyo is committed to excellence in research and education as well as establishing a truly global campus where we hope to produce the next generation of leaders of the world.



Unique Education System

The University of Tokyo has a unique undergraduate teaching structure where all the undergraduate students are enrolled in the College of Arts and Sciences for their first two years of study and are exposed to liberal arts education. This system encourages the students to analyze different issues from interdisciplinary perspectives. After the first two years, students specialize in a field of their interest so that they may gain a deeper and thorough understanding of a particular subject, based on the broad-based knowledge they gained in their first two years.

The graduate schools of the University of Tokyo provide an optimal environment for intensive studies, and, with our research institutes, students are able to gain the most specialized knowledge in their fields. In this way, the University of Tokyo combines the best of liberal arts education with professional education.



Significant Role in the International Education Scenario

The University of Tokyo is Japan's premier institution of higher education and is one of the most important research hubs not only of Asia but also of the world. Today, the university is actively promoting internationalization, sharing its research results globally and welcoming researchers and students from all over the world. Numerous international conferences, symposia, and lectures on many of the most exciting academic topics are held every year, drawing participants from different parts of the world. In recent years, the university is aggressively establishing English-language degree programs both in undergraduate and graduate schools so as to further promote the internationalization of its campus.



The University of Tokyo's effort to globalize in recent years resulted in the launch of two new undergraduate programs, one of which I am lucky enough to be a part of. PEAK's Japan in East Asia is an innovative, interdisciplinary course that aims to provide students with both a broader understanding of East Asia as well as new perspectives on a global society. The curriculum is comprised of study in a variety of disciplines under the name of liberal arts, combined with the mastering of two foreign languages – English and Japanese.

Being a student in the University's very first PEAK program is a privilege that has brought me a unique chance to learn about Japanese culture and society as well as given me a vantage point to better appreciate the country's history and contemporary international relations in profound ways. Having studied Japanese Philology for two years in my home country and having been fond of Japanese culture for a long time before that, I cannot think of a program

that could have suited my interests more and equips me better for my future with knowledge I will find useful. The experience has constantly provided me with fresh ideas that naturally emerge when one is entrenched in such an international community and a diversity that PEAK embodies.

With the world's focus becoming more and more centered on Asian affairs, it is said that the twenty-first century will be the Asian Century. Being exposed to such an inspirational environment in the heart of Japan, PEAK students are likely to help build bridges within and beyond the borders of the Asian continent, and work towards a sustainable future. The University of Tokyo does its best to help its students ride the wave of globalization and prepare them to take a stand when the time comes.

(article written in April 2013)

Anna Wozny - Poland
International Program on Japan in East Asia
College of Arts and Sciences



"Fall entrance? I didn't know there was such a system at the University of Tokyo!" This is the typical reaction I get when I introduce myself as a PEAK student. PEAK took its first steps about eight months ago with me and my colleagues' entrance as the program's first class. Before my senior year, Todai was not even on my list of universities to apply. To me, a student studying in the United States at the time, Todai was simply one of the few Asian universities that was ranked among the top 30 universities in the world. It was only a distant interest to me. However, as I gradually found out about PEAK, Todai became one of my top choices.

Having lived in Japan now as a PEAK student for about a year, I can say with confidence that I could not be any more relieved and satisfied with the path I chose to further my education. Even though PEAK is still being polished here and there, I certainly believe that it is molding its students to become world leaders.

PEAK has recruited a diverse group of students and faculties from all over the world and PEAK consists of students from at least eleven different nations. As a result, the interactions among PEAK students alone provide invaluable learning experiences that

prepare us for the more globalized societies of the future. For example, four of my closest colleagues from PEAK came to Korea for one week to visit me over spring break. For some of them, this visit was their very first visit to Korea. Hoping to make unforgettable memories, I took them around many places so they would be able to see both the traditional and modern sides of Korea.

Additionally, PEAK exposes its students to a variety of subjects. Unlike other students who take classes only in their areas of study, PEAK students are free to take any class regardless of one's area of study. For example, a humanities student is free to take any course from a science student's curriculum. Such a system surely opens up more opportunities to students to find their true calling.

PEAK has been a blessing to me. The environment, the people, and the experiences that PEAK has provided me have made me who I am today. I look forward to travelling on the journey I have always dreamed of with PEAK as one of the very first stepping stones.

(article written in April 2013)

Seojin Lee - Republic of Korea
International Program on Japan in East Asia
College of Arts and Sciences



Launched in October of 2012, PEAK (Programs in English at Komaba) is a new and highly innovative undergraduate degree program for students who have received their secondary school education in languages other than Japanese. It consists of two programs, "International Program on Japan in East Asia" and "International Program on Environmental Sciences." No knowledge of Japanese is required for admission. Once enrolled, students are required to study the Japanese language but all other classes are taught in English.

PEAK is a prime example of the University's serious commitment to globalizing its campus. Since its beginning, it has attracted world-wide attention, including coverage in such media as *The New York Times* and *The Straits Times* (Singapore) as well as Japan's NHK.

PEAK is a rigorous academic program with a very low student-faculty ratio. As a result, most classes are very small and students enjoy the individual attention and supervision of professors who hail from many different parts of the world (including Korea, Hong Kong, Ireland, Japan, the U.K., and the U.S.). The University is confident that the solid academic background, along with their multilingual skills and multicultural outlook, will equip PEAK students for a wide variety of careers in research, business, and government, both in Japan and abroad.

PEAK students now make up an integral part of Komaba campus life today. PEAK and non-PEAK students interact daily in many settings – in classes, cafeterias, libraries and in extracurricular activities – inspiring each other, crossing cultural boundaries and learning new values. PEAK is a path to gaining new and exciting insights to today's rapidly globalizing world.

Come and join us in this new and ambitious project. You too, can make history by becoming a part of PEAK!

PEAK

Programs in English at Komaba

Be the best on the International Stage



Prof. Woodward with PEAK students and TGIF (Todai Global Interaction Friends)

Voice of a Teacher



Jonathan Woodward - u.k.
Associate Professor
College of Arts and Sciences

I grew up in the North West of England and fell in love with science after receiving my first chemistry set for my birthday as a young boy. I have a passion both for conducting new scientific experiments and for relating the beauty and importance of science to others through teaching. I came to live in Japan in 2008 and moved to the University of Tokyo in 2011 after hearing about what would become the PEAK program and knowing that it was something I wanted to be involved in.

PEAK is something really new for the University of Tokyo. It represents the first time in the University's long and distinguished history where students with no knowledge of Japanese can come and study on a full four year undergraduate program consisting of two years of liberal arts education and two years of senior specialization, while at the same time learning about Japan and its language and culture. In addition, the PEAK courses themselves, Environmental Science and Japan in East Asia, are unique in taking advantage of the diversity of expertise of the University's world class professors

and constitute a truly international, interdisciplinary and innovative program.

The first PEAK students arrived in October 2012 and teaching them has been a very exciting time for me. Their wide range of backgrounds and unique perspectives mean that there is much to learn for both me and for them in every class. I teach primarily on the Environmental Sciences program where I give courses on chemistry and related subjects. My own research interests are concerned with the sensitivity of chemical reactions to magnetic fields which appears to have very important consequences in our environment. Many different species of animals are capable of sensing the Earth's very weak magnetic field and making use of the information, for example for navigation. We are now starting to understand that the origin of this ability appears to lie in quantum mechanics which is exciting indeed. I look forward to continuing to share my passion and excitement for science with all students at the University of Tokyo.

Promotional Video - "PEAK at UTokyo"

The students of the PEAK programs have gotten together to produce a promotional video "PEAK at UTokyo" that can be viewed on YouTube. (<https://www.youtube.com/watch?v=XzU2dpZoEok>)

Other videos about the University of Tokyo, including the official PR video "Explorer" can be found on the UTokyo channel on YouTube. (<https://www.youtube.com/user/UTokyoPR>)

FAQ

What kind of scholarships are there and when do I need to apply for them?

There are various kinds of scholarships available for study at the University of Tokyo, ranging from full scholarships to partial scholarships, and from governmental (the *Monbukagakusho* (MEXT) scholarship available through JASSO) to corporate and university scholarships.

As the availability of scholarships varies according to the course, please visit the website of the course to which you wish to apply for more details or the JASSO website (http://www.jasso.go.jp/study_j/scholarships_e.html). Some examples of the scholarships available are also listed in this brochure (see page 72).

The timing for applying for scholarships varies from before applying to the university to after you have enrolled and started your course. For application periods, please check with the scholarship provider or relevant university office. Please note that many scholarships require that you do not receive any other scholarships, domestic or international, during the same time period. Please check eligibility requirements carefully when applying for scholarships.

What is the cost of living in Japan?

Tokyo has the highest level of living expenses in Japan. It is said that students spend about JPY 2,000,000 – JPY 2,500,000 per year. For more information, please see page 73 of this brochure. Additional information can be obtained by searching the internet.

Which office should I contact if I have some questions to ask?

Please see the following website and contact the office that is best suited to answer your questions.
<http://www.u-tokyo.ac.jp/en/contact.html>

Do I need to contact my prospective professor before I apply?

There is no single answer to this question. For some courses it is recommended that you contact your prospective professor, especially if you are applying as a postgraduate. In some cases, however, this is not necessary. Please confirm with the departmental administration before making contact. However, it is against university rules and regulations for faculty members to be in contact with a prospective student once applications are under review. All communications, if any, must be made prior to sending in your application.

The following address leads to the University of Tokyo Faculty Search website where you will be able to search by name, department or keywords.
<http://www.u-tokyo.ac.jp/en/people/>

Is it absolutely necessary to be proficient in Japanese to apply?

That depends on the course. If you are applying to the PEAK program or GSC program, then proficiency in Japanese is not required as the courses will be taught in English, but Japanese language courses are also offered as a part of the curriculum.

For any other undergraduate courses, Japanese proficiency is required as classes are generally given in Japanese. Language requirements for postgraduate courses vary depending on the course you take, but again, Japanese language courses are available at the Japanese Language Center and in several of the graduate schools. Regardless of course requirements we would recommend that you learn Japanese while at the university to be able to carry out day-to-day conversations and make the most of your time.

For graduate school requirements, please see the table on pages 45-46 for reference and check with the relevant offices of the graduate schools.

How much is the tuition?

For undergraduate, and Master's level, the tuition fees are JPY 535,800. For doctorate level, the tuition fees are JPY 520,800. Please visit the following website for more details, or you can find more information on page 73 of this brochure.

<http://www.u-tokyo.ac.jp/en/campus-life/students/financial-aid/tuition/index.html>

What kind of accommodation is available at the University of Tokyo and how do I apply for one?

Housing for international students at the University of Tokyo falls into two main categories: (1) residence halls operated by the University and other institutions, and (2) apartments and other rental properties leased by private businesses (see page 71).

Applications for university residence halls are accepted twice a year. For details, please consult the Housing Office website.

Please note that due to the limited number of vacancies, not all applications can be accommodated.

The University of Tokyo Housing Office's website provides helpful advice on how to search for privately leased apartments and explains the procedures, customs and other features of Japan's unique apartment rental system. Please visit the Housing Office's website at <http://www.u-tokyo.ac.jp/en/administration/housing-office/>

Are there any short-term programs available at the University of Tokyo?

Yes, there are short-term programs available at the University of Tokyo and some are listed in this brochure (see pages 61-62). Some are open to everyone and others are restricted to specific member institutions.

Please also check the departmental websites to see which courses are available for that year.

Does the University offer any support for career development for international students?

Yes. The International Center provides information that may be of use if you are looking for a job in Japan, such as how to change your status of residence to be able to work in Japan or job vacancies from companies. They also hold career seminars in English. Their advisory room also provides personal career advice and support for international students.

For more information, please see the following website:
http://www.ic.u-tokyo.ac.jp/ic/recruit_support/index_e.html

Are we able to go and study abroad?

As a student of UTokyo you will be encouraged to take part in a study abroad program during your time at the University. The University has a number of university-wide agreements with other top-tier universities overseas. Moreover, many faculties and graduate schools have departmental level exchange agreements with other universities in a wide range of countries. For a list of universities with ties to UTokyo please see the following website. (<http://www.u-tokyo.ac.jp/en/about/international-activities/index.html>) Also, please check the "Go Global" website (<http://www.u-tokyo.ac.jp/ja/administration/go-global/>) for university-wide student exchange programs and the departmental websites to see which programs are available for that year.

What kind of extracurricular activities are available?

The University of Tokyo offers a wide range of extracurricular activities for students, ranging from team and individual sports to voluntary work like helping rebuild the East Japan region devastated by the Great East Japan Earthquake in March 2011, in addition to clubs or "circles" which are commonly found in Japanese universities. There are several International Student Associations at the University which can be of help for new students arriving from overseas. Some International Student Associations are listed on the following website.
http://www.ic.u-tokyo.ac.jp/ic/party/index_e.html

How do I find out which campus I will be on?

As a general rule, the first two years of undergraduate study (Junior Division) are spent on Komaba Campus. From the third year onwards (Senior Division), your campus will depend on your field of specialization. In most cases, this will be Hongo Campus, but there are some departments which are based on Komaba Campus. If you are entering as a postgraduate student, you could be based on Kashiwa Campus, Hongo Campus or Komaba Campus. Please check with the relevant department or website for details.

For undergraduate students taking the degree courses in English, PEAK students (College of Arts and Sciences) will be on Komaba Campus and GSC students (Faculty of Science) will be on Hongo Campus.

Briefly describe GSC.

Y: The Global Science Course is a new program that will be starting from 1st October 2014. We will be welcoming international transfer students from overseas into the third year of undergraduate studies.

S: We are pleased to announce that the whole course will be delivered in English. Currently, the program is only available in the Department of Chemistry, a part of the School of Science.

How did the concept for the program develop?

Y: One of the educational objectives of the School of Science is to enhance cross-cultural interactions with diverse peers in order to stimulate the minds of students.

S: The School provides students with outstanding opportunities for intellectual development and the acquisition of professional knowledge and skills. In recognizing the strength that our School has, we hope to nurture talents with global perspectives that exhibit global leadership qualities.

How does GSC differ from other science courses?

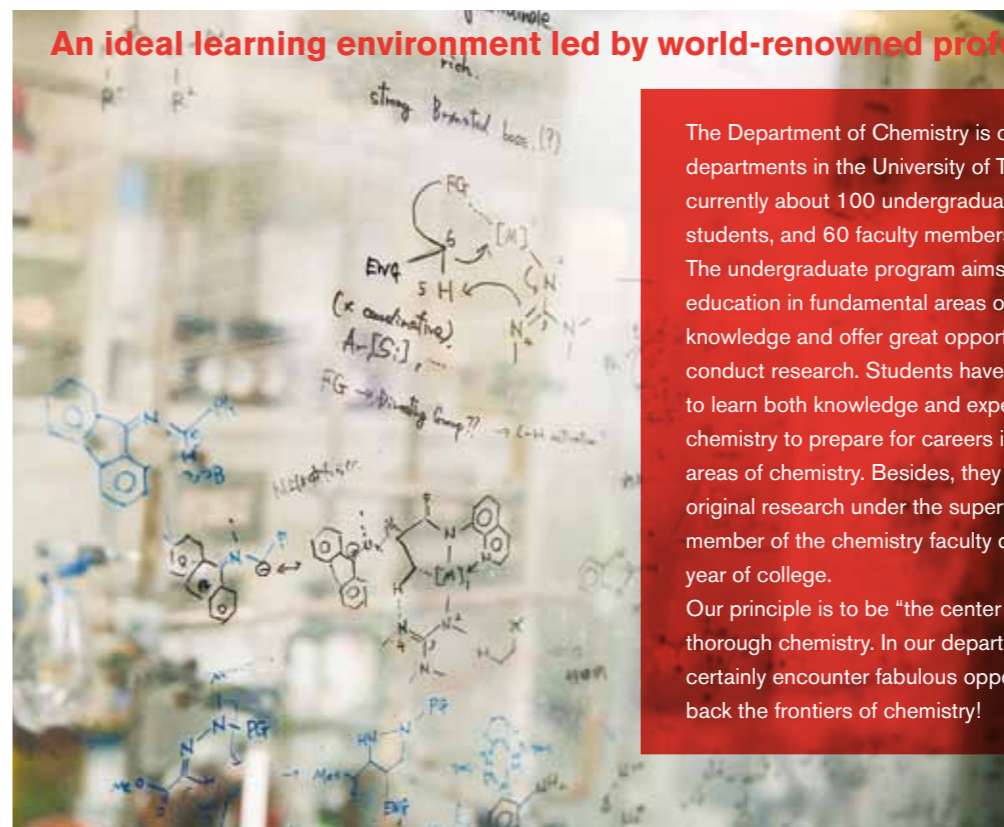
S: Well, we really wanted to focus on bringing together bright young minds. This way we hope that they will be able to help one another to excel; producing new and innovative work that pushes the boundaries of current scientific theories and ideas.

Y: By incorporating access to first class resources and the latest developments in laboratory instruments, we have built a strong platform, with a course designed to allow students to take the first steps into pioneering a new era of science.



A global platform bringing together young minds from Asia and beyond

An ideal learning environment led by world-renowned professors



The Department of Chemistry is one of the oldest departments in the University of Tokyo. There are currently about 100 undergraduates, 200 graduate students, and 60 faculty members.

The undergraduate program aims to provide education in fundamental areas of chemical knowledge and offer great opportunities to conduct research. Students have a lot of chances to learn both knowledge and experimental skills in chemistry to prepare for careers in many different areas of chemistry. Besides, they also undertake original research under the supervision of a member of the chemistry faculty during their senior year of college.

Our principle is to be "the center of science" thorough chemistry. In our department, you will certainly encounter fabulous opportunities to push back the frontiers of chemistry!



Saki Ichikawa
Class of 2013
Department of Chemistry

GSC Global Science Course Undergraduate Transfer Program

Obviously the course is aimed at English speaking students, how well will they be able to work with Japanese students?

Y: One of our key aims is to create an internationalized School of Science. The international GSC transfer students we select will work alongside Japanese students all of whom are proficient in the English language.

S: Of course there are also Japanese language lessons which we hope the international students will enjoy thoroughly, enabling them to fully immerse themselves in Japanese society and gain a better understanding of the Japanese culture!

What do you expect from GSC candidates?

Y: We are looking for students who are really motivated to excel academically. They must be able to exhibit the potential for intellectual growth and possess the skills and confidence to help realize the university's ultimate goal of nurturing them into global leaders.

S: We want students who are also enthusiastic and proactive about introducing and sharing their own cultures within the university's campus.

What can students expect from living and studying in Tokyo?

Y: Japan has always been on the front line when it comes to creative science which we have already assimilated heavily into our everyday lives here. I feel students will really be inspired living and studying in such a fascinating environment thus facilitating an enthusiastic research culture.

S: I agree. Tokyo is a fun, vibrant city with new and interesting ideas springing up all the time.

What are your future hopes for the program?

S: Naturally, it is our ambition to see the program expand and flourish. At the moment the course is run by the Department of Chemistry only but we hope to develop courses in other departments within the School of Science.

Y: We have renowned professors and top researchers delivering lectures and giving seminar talks, this way, we hope to establish an ever growing worldwide faculty in order to consistently and effectively adapt the course to cover new scientific development as well as the basic fundamentals.

S: We are also looking forward to a future where students from a wide variety of diverse cultures can come together and prosper from having a world class faculty, who are committed to innovation and excellence in teaching, at their disposal.



Prof. Kaoru Yamanouchi (Y)
GSC Coordinator
Department of Chemistry
School of Science



Prof. Hiroaki Suga (S)
Head
Department of Chemistry
School of Science

Our support

We strive to provide the best support to all GSC transfer students to ensure that they are able to focus on their studies and at the same time enjoy their time while studying in Japan.

1. School of Science Scholarship

All GSC transfer students are entitled to receive a stipend of JPY150,000 per month for up to two consecutive years.

2. Housing

UTokyo International Lodge or private housing will be arranged with monthly rent fully supported by the School of Science.

3. Student Tutors

Japanese students in the Department of Chemistry will act as student tutors to support GSC transfer students academically.

4. School of Science Offices

Professional office staff members will provide dedicated support for transfer students while they ease in to a new life in Tokyo.

Study Plan

GSC curriculum will cover a broad range of subjects. Traditional core areas of chemistry will integrate with advanced concepts to build a solid foundation of knowledge in students; at the same time allow them to embrace new challenging areas. Students will be required to take a specified number of core courses and laboratory courses as well as participate in seminars. During their two years with us, students will develop high level of knowledge and skills. It is our ambition to expose students to various fields of chemistry to further expand and broaden their knowledge.

Future Prospect

As an undergraduate course, GSC is offering the best possible step toward the respective futures of the students. Undergraduate students from our Department of Chemistry have endless possibilities as to which path they can take after completing their studies.

i) Graduate School of Science

We encourage our undergraduate students to pursue further studies at the Graduate School of Science where our programs cover advanced studies in all fields of science. Graduate students build a foundation of knowledge in their respective fields of chemistry and also develop experimental skills in their own fields of expertise as well as other research fields.

ii) Seeking Employment

The most useful tool for carving students' future is the extensive UTokyo alumni network. As UTokyo graduate, students automatically become part of this invaluable global network and have the best chance at the brightest futures. Students graduating from the UTokyo School of Science with a degree in chemistry find a variety of job opportunities in various sectors with prestigious institutions and renowned companies with global markets.



“STEP into the Future”

USTEP

University-wide Student Exchange Program

About USTEP

USTEP is a University-wide Student Exchange Program at the University of Tokyo, one of the top universities in the world. It provides opportunities for students from partner universities to explore the quest for knowledge by taking a wide range of classes in Social Science and the Natural Sciences, exchanging ideas with the nation's top Japanese students and meeting students from all over the world. It also offers the chances to learn about the depth of Japanese culture, history and language.

The undergraduate studies will be located in Komaba and Hongo where the campuses are quiet and full of nature, yet the students can also experience life in Tokyo metropolitan area. There is a variety of accommodation available in terms of cost, location and living style. The environment will be very stimulating in terms of knowledge and interaction with other students from both Japan and the world.

Although only for a semester or a year, it will be a life changing experience to find yourself living abroad as well as being a preparation for stepping into the global community in the future.



Period of Study	
1 year	April to March / October to September
Summer Semester	April to September
Winter Semester	October to March

Courses
USTEP students can take various courses at UTokyo given in English or in Japanese in one or several Faculties depending on their purpose of participation and/or their proficiency in the language. Graduate students may conduct research under the guidance of a faculty member.

Japanese Language Education
USTEP students are able to take Japanese language lessons. However, credits will not be awarded for some Japanese language courses.

Application Procedures	Winter Admission	Summer Admission
Application Period	From January 1 to February 28	From August 1 to September 30
Notification of Admission	May	December
Courses Start	Early October	Early April

Partner Universities (as of February 2014)			
Country/Region	Name of University	Country/Region	Name of University
Taiwan	National Chiao Tung University, National Taiwan University	Denmark	University of Copenhagen
China	Shanghai Jiao Tong University, Tsinghua University, Nankai University, Peking University	Finland	University of Helsinki
Hong Kong	The University of Hong Kong	France	École Polytechnique, École des Hautes Études en Sciences Sociales (Graduates only)
Korea	Seoul National University, Pohang University of Science and Technology, Yonsei University	Germany	University of Cologne, Free University of Berlin, LMU Munich
Singapore	National University of Singapore (Undergraduates only)	The Netherlands	University of Groningen
Brazil	Universidade de São Paulo	Russia	St. Petersburg State University
Chile	The University of Chile, Pontificia Universidad Católica de Chile	Sweden	KTH (Royal Institute of Technology)
Canada	University of Toronto, University of British Columbia, McGill University (Undergraduates only)	Switzerland	Eidgenössische Technische Hochschule Zürich
USA	Yale University (Yale Fox International Fellowship Program) (Graduates only), Princeton University	UK	The University of Sheffield, University of Southampton (Undergraduates only)
Australia	The University of Adelaide, Australian National University (Undergraduates only), The University of Queensland, The University of New South Wales		



Hongo Campus

Why USTEP/UTokyo?



"The Best in Japan ☺"
Ms. Hoi Lun Helen Tang
The University of Hong Kong



"Fantastic Students"
Ms. Luyao Ma
The University of Hong Kong



"ACADEMIC RIGOUR"
Ms. Yun Rong Debra Chua
National University of Singapore



"To become more in touch with my roots"
Mr. Rentaro Burress
University of British Columbia

Life at UTokyo



Komaba Library



Room in university accommodations



Komaba Campus



Lunch at the cafeteria

Total Support from USTEP Office



Ms. Emiko Goshu
USTEP Coordinator



Prof. Shigeto Sonoda
Deputy Director
of
International Center



Prof. Takeo Fujiwara
Deputy Director
of
International Center



Prof. Toshiko Ellis
Deputy Director
of
International Center



Komaba Campus

More information can be found on:

<http://www.u-tokyo.ac.jp/en/admissions-and-programs/exchange-program/index.html>



Undergraduate Education

Junior Division

College of Arts and Sciences

Senior Division

Faculty of Law

Faculty of Economics

Faculty of Letters

Faculty of Education

College of Arts and Sciences

Faculty of Engineering

Faculty of Science

Faculty of Agriculture

Faculty of
Pharmaceutical Sciences

Faculty of Medicine



Undergraduate Education System

The University of Tokyo's Undergraduate Education System - Late Specialization

A key feature of the undergraduate education at the University of Tokyo is that the first two years (referred to as the Junior Division) are devoted to the acquisition of fundamental skills necessary for further study. At the time of admission, students are assigned to one of six streams in either the Humanities and Social Sciences, or the Natural Sciences, where they study a broad spectrum of liberal arts subjects. From this Junior Division, they proceed to one of the 47 departments in the ten Faculties of the Senior Division (the third and fourth years) in accordance with their preference, aptitude, and performance. This procedure is referred to as "Late Specialization".

The pathways between the Junior Division and the Senior Division are set so that students in each Junior Division stream generally proceed to Senior Division Faculties linked to that stream. However, since 2008, students have been given more flexible options to proceed to any Faculty regardless of their Junior Division assignment provided they fulfill certain requirements, though the quota for such students is limited. It should also be noted that depending on their performance, students may be assigned to a Faculty other than that of their preferred choice.

Note: International students admitted through Special Class-1 Screening proceed to the Senior Division faculty and department that they indicated in their university application form, provided that they fulfill the entry requirements for that faculty and department. Students who were admitted to the PEAK program will proceed on to the International Program on Japan in East Asia or the International Program on Environmental Science of the Senior Division of the College of Arts and Sciences whichever they indicated at the time of their examination, provided that they fulfill the necessary requirements.



Building 1 of the Komaba Campus is used for lectures. The clock tower has become the symbol of the campus.



Students mingling around Building No.5 between classes.



College of Arts and Sciences – Junior Division

教養学部前期課程

All undergraduate students of the University of Tokyo undertake their first two years of study (“Junior Division”) at the College of Arts and Sciences on the Komaba Campus. All students belong to one of six streams: Humanities and Social Sciences I, Humanities and Social Sciences II, Humanities and Social Sciences III, Natural Sciences I, Natural Sciences II, or Natural Sciences III. The curriculum for each of these streams is directed mainly toward specialization in Senior Division undergraduate courses in the following faculties:

Junior Division	Senior Division
Humanities and Social Sciences I	Faculties of Law, and Arts and Sciences
Humanities and Social Sciences II	Faculties of Economics, and Arts and Sciences
Humanities and Social Sciences III	Faculties of Letters, Education, and Arts and Sciences
Natural Sciences I	Faculties of Engineering, Science, Pharmaceutical Sciences, Agriculture, Medicine, and Arts and Sciences
Natural Sciences II	Faculties of Agriculture, Pharmaceutical Sciences, Science, Engineering, Medicine, and Arts and Sciences
Natural Sciences III	Faculty of Medicine (School of Medicine)

Students receive a liberal arts education intended to foster a broad and deep cultural sensitivity and a well-rounded character and to endow them with the fundamental skills required for specialized study in the Senior Division. The curriculum in the Junior Division consists of “Foundation Courses,” “Intermediate Courses,” “Integrated Courses,” and “Thematic Courses.” All Junior Division students receive language education that is diversified and innovative, education in information sciences that is relevant to the changes taking place in society, and education in health sciences. The majors in the Senior Division are decided according to each student’s preferences, academic performance, and potential during the Junior Division. While the great majority of students move on to one of the above faculties, a new system was launched in 2008 which gave students more flexibility in choosing their department for senior study.

In Fall 2012, the College of Arts and Sciences launched two new programs for students wishing to complete their degrees entirely in the English language: the International Program on Japan in East Asia and the International Program on Environmental Sciences.



Physical education class being held on the rugby field.



No. 900 Lecture Theater holds an operating pipe organ used on special occasions.

Faculty of Law

法学部

The Faculty of Law is the oldest and most prestigious educational institution in the fields of law and political science in Japan. The origin of the Faculty dates back to 1872 as the Law Department of Tokyo Kaisei Gakko, the first of its kind in Japan, which then was incorporated in 1877 as one of the original faculties of Tokyo Imperial University. The Faculty has produced innumerable outstanding professionals, both Japanese and non-Japanese, in the fields of law practice, government service, politics, business, the news media and academia, including more than ten prime ministers.

The Faculty’s objective of education is to provide students with a clear understanding of legal and political institutions. The curriculum is divided into three courses, namely Private Law, Public Law, and Political Science, although students may take classes that are offered in courses other than their own. Through this arrangement, students are encouraged to acquire a firm grasp of the workings of legal and political institutions, while developing in-depth understanding of particular fields by placing specific priorities in civil law, public law, or political science.

The modes of instruction and the size of classes differ by subject. Introductory survey classes are composed of relatively large student bodies. These are supplemented by specialized classes and seminars where smaller attendance allows for more interaction between the students and the instructors. Although most of the classes are offered in Japanese, a growing number of classes are offered in English.

Upon graduation, those who wish to pursue a career in law practice usually continue on to the School of Law, while students who aim to work for government service may apply to the Graduate School of Public Policy. Students interested in academic careers enroll in the School of Legal and Political Studies. Many graduates also seek employment upon graduation, in government service or in the private sector.



Students chatting outside the department building.



Faculty of Law and Letters Building 1.

Bachelor of Laws

- Department: Private Law Course
- Department: Public Law Course
- Department: Political Science Course

Contact e-mail address

Undergraduate Section:
jkyomu@j.u-tokyo.ac.jp

International Student Adviser:
jryugaku@j.u-tokyo.ac.jp



Bachelor of Economics

- Department of Economics
- Department of Business Administration
- Department of Finance

Faculty of Economics

経済学部

The Faculty of Economics is comprised of the Department of Economics, the Department of Business Administration and the Department of Finance. The Faculty's objective of education is to provide students with systematic methods to understand the various complicated socio-economic developments in society. Those methods include historical, mathematical or statistical methods, among others. Students are required to learn those disciplines and apply them to practical issues.

The Department of Economics familiarizes students with various economic theories and their application that are useful in understanding the workings of the economic system. Those theories are for example concerned with determination of macroeconomic variables such as GDP and unemployment, resource allocation and its control, strategic interactions of firms and consumers, income distribution and poverty.

The Department of Business Administration offers courses on theories and practical methods related to business administration and management. Topics include business management, decision-making, personnel affairs, corporate research and development, and marketing. Accounting and industrial analysis are also taught in the Department.

The Department of Finance teaches theories and practice of finance and economic theory. The curriculum of this Department attaches great importance to the theoretical discipline of economics and accounting. It also places emphasis on practically-oriented coursework in collaboration with private financial institutions. The Center for Advanced Research in Finance (CARF) provides analytic facilities with extensive databases for empirical studies. Students in the Department will be exposed to the Center's latest research outcomes in their coursework.



The Economics Research Bldg as seen from top of the Faculty of Medicine Experimental Research Bldg.



Computer lab open for use by students.

Contact e-mail address

Group Administering International Affairs (GAIA),
advisefs@e.u-tokyo.ac.jp



Bachelor of Arts

- Division: Philosophy and Religion
- Division: History
- Division: Language and Culture
- Division: Psychology and Sociology

Faculty of Letters

文学部

The Faculty of Letters at the University of Tokyo is Japan's oldest humanities department. The establishment dates back to 1877. From the beginning, the Faculty featured a curriculum that combined Western knowledge with Sino-Japanese scholarly traditions and efforts have always been made to sustain a system of learning that maintains a balance between these two traditions.

The Faculty experienced many expansions and reorganizations. Currently it consists of four divisions (initially called sections): Philosophy (Philosophy and Religion), History (History), Literature (Language and Culture), and Psychology and Sociology. Each of these four divisions seeks to examine the composition of human thought, transitions in human activity, intellectual expression made possible by human language and actual human behavior. While each offers its own unique perspective and approach to these questions, they all share a common purpose, the inquiry into man himself. They are further divided into 27 specialized departments.

That is, our aim is to explore human beings and their society from various perspectives, providing a wide range of courses. Each of our disciplines has a long history as an independent discipline, while we have also been successful in adapting our approaches and methods to changing social needs and conditions. The students of any division are allowed to pursue their academic interests beyond formal divisional boundaries, so that they can benefit from the richness and diversity of our resources.

In addition to these "traditional" disciplines, the Faculty has introduced a number of interdisciplinary courses such as "Cultural Resources Studies," "Applied Ethics" and "Death and Life Studies." We also offer courses in academic writing and information media, which help students acquire various skills necessary for their research.



Arcade sidewalk at Faculty of Letters Bldg 2.

Contact e-mail address

Office of Graduate School
in@l.u-tokyo.ac.jp
 Office of International Students and Scholars
oissjin@l.u-tokyo.ac.jp



Bachelor of Education

- Department of Integrated Educational Sciences



The Faculty of Education Building.



Field trip for international students.

Contact e-mail address

**Student Affairs Section,
Faculty of Education**
gakuseishien@p.u-tokyo.ac.jp

Faculty of Education

教育学部

The Faculty was established in 1949 with the primary objective of providing opportunities for students to think profoundly about how individuals function and develop in society as well as to acquire specialized knowledge of educational research and practical skills in teaching. Students will take part in various education-related activities and study wide range of issues on the role of schools in the development of society and culture and the way education helps realize the well-being of people and create a better society.

The Faculty of Education consists of five divisions: Basic Theories of Education, Social Sciences in Education, Educational Practices and Policies, Educational Psychology, and Physical and Health Education.

The faculty has diverse academic bases including humanities, social sciences and natural sciences. Due to small numbers, students and teachers form a close-knit community and organize lectures, seminars, and other activities in a friendly and cooperative atmosphere. Lectures are systematically organized around the three basic units: Basic Theories of Education, Educational Sociology, and Physical and Mental Development Science. They are diverse and interdisciplinary in their academic approaches, at times requiring students to conduct surveys and experiments. They also have opportunities to observe real classrooms and do some research into the way they are organized at the Secondary School attached to the Faculty of Education and other educational institutions. Writing a graduation thesis is compulsory for all students, and careful supervision is provided in consideration of each student's academic concern.

Together with the Graduate School of Education, the Faculty of Education functions as a world center for education and related research, accepting every year many international students and researchers from all over the world. While a significant number of its graduates find education-related jobs or go on to pursue graduate studies, others also find work in different fields including private business, civil service, and the media.

Bachelor of Liberal Arts

- Department of Humanities and Social Sciences
- Department of Interdisciplinary Sciences
- Department of Integrated Sciences



The ginkgo walk on Komaba Campus.



Interactive classrooms in the new 21 KOMCEE (Komaba Center for Educational Excellence) building.

The College of Arts and Sciences offers Junior Division (first- and second-year) liberal arts education for all students entering the University of Tokyo, but it is also responsible for specialist Senior Division education for third- and fourth-year undergraduate students. Consisting of programs in both the humanities and sciences, the Senior Division aims to develop further the liberal arts spirit of the Junior Division through cutting-edge teaching that is interdisciplinary in scope and international in focus.

After the creation of the College of Arts and Sciences in 1951, the Faculty of Arts and Sciences on the Komaba Campus pioneered the founding of a program in International

College of Arts and Sciences – Senior Division

教養学部後期課程

Relations, along with other programs which transcend the boundaries of traditional disciplines. More recently, the College undertook a bold new reorganization of its programs to better respond to the new demands of the contemporary society. The reorganized College of Arts and Sciences now consists of three departments: Humanities and Social Sciences, Interdisciplinary Sciences, and Integrated Sciences.

The primary goal of the Senior Division is to foster in its students a broad understanding of the complex issues facing human society in the twenty-first century. It is organized on the assumption that in order to respond to these diverse contemporary problems, students need to be able to both discern and transcend existing systems of categorization. As a small and highly selective educational unit, the Division is also able to make productive use of student input and creativity. Following on from the tradition established at the time of its original establishment as the Department of Liberal Arts and the Department of Pure and Applied Sciences, Komaba's Senior Division continues to produce widely-respected graduates ready to contribute their creative intelligence and problem-solving skills to society. While a significant number choose to pursue graduate studies, many also enter fields such as the civil service, the corporate world, educational or research institutions.

Contact e-mail address

Senior Division Section:
kouki@adm.c.u-tokyo.ac.jp



Undergraduate Education



Bachelor of Engineering

- Department of Civil Engineering
- Department of Architecture
- Department of Urban Engineering
- Department of Mechanical Engineering
- Department of Mechano-Informatics
- Department of Aeronautics and Astronautics
- Department of Precision Engineering
- Department of Information and Communication Engineering
- Department of Electrical and Electronics Engineering
- Department of Applied Physics
- Department of Mathematical Engineering and Information Physics
- Department of Materials Engineering
- Department of Applied Chemistry
- Department of Chemical System Engineering
- Department of Chemistry and Biotechnology
- Department of Systems Innovation



Bachelor of Science

- Department of Mathematics
- Department of Information Science
- Department of Physics
- Department of Astronomy
- Department of Earth and Planetary Physics
- Department of Earth and Planetary Environmental Science
- Department of Chemistry
- Department of Biophysics and Biochemistry
- Department of Bioinformatics and Systems Biology
- Department of Biological Sciences

Faculty of Engineering

工学部

Engineering is not simply an academic discipline that deals with technology. It has a far wider scope, ranging from basic science to applied technology. Researchers pursue scientific principles or address social challenges with comprehensive leverage, such as the reconstruction of the disaster-hit areas and the creation of a low carbon society; all of these areas are included in engineering. However, engineering is never a chaotic cluster of academic fields. It consists of a system which is based on a deep understanding of each discipline and its expedient organic linkage.

One of the goals of the Faculty of Engineering is the cultivation of human resources that are equipped with a systematic knowledge of science and technology and an engineering mindset, capable of responsibly conducting research, development, planning, design, production, management, and policy formulation in relation to engineering and its application.

A deeper purpose is to contribute to the sustainability and development of society through pioneering new engineering frontiers and actively participating in research that may lead to new technological innovations.

The system of education offered by the Faculty of Engineering is carefully structured to enable students both to study the basics and master specialist areas of expertise.

Currently, there are 16 departments in the Faculty of Engineering. In each department, a wide variety of programs are provided including problem solving exercises, experiments, practical workshops, design exercises, field surveys, project exercises, graduation research and graduation design. Employing such diverse educational methods, faculty members work to attain our strategic goals such as building a wide range of human resources and enriching our international attractiveness. For graduation research, students share laboratories with graduate students where they have opportunities to get a glimpse of cutting-edge research and can learn the pleasure of nurturing their intellect. Research outcomes created by the methods above are currently leading the world.



A scene from a classroom



No. 15 Lecture Room, Engineering Building No.1

Contact e-mail address

Office for Academic Affairs
Undergraduate Team:
gakubu@t-adm.t.u-tokyo.ac.jp

Office for International Students:
ryugakusei@t-adm.t.u-tokyo.ac.jp

Office for International Cooperation
and Exchange:
t-oice@t-adm.t.u-tokyo.ac.jp

Faculty of Science

理学部

In the Faculty of Science, education and research in relation to science are carried out. Science is a scholarship to search for the fundamentals and laws of the natural world through a dialogue with nature. Many of our motives for research arise out of genuine interest and the wisdom that human beings have gathered since time immemorial. Sometimes such understanding of nature is immediately applied to the real world, at other times it brings about drastic changes in our lives over a long span of time.

For example, let us look at quantum mechanics that describes the world on the micro-scale. This field derives from the search through genuine interest in atomic structure, the true nature of light and so on. The results of such quests produced fruitful results; through the understanding of the behavior of electrons in materials, semiconductor technologies and computer technologies have been created, and further, the modern information-based society was developed. Quantum mechanics clarified the true nature of chemical bonds and brought about understanding of nanoscale molecular structures and chemical reactions. Based on such understanding we are able to develop various functional materials. Now we are surrounded by products that are outcomes of such quests in quantum mechanics. Meanwhile, the concept of molecular structures is extended to include organisms and, triggered by the discovery of the double helix structure of DNA, a technological explosion in biotechnology occurred.

Were it not for the studies in quantum mechanics, many of the conveniences we enjoy today would not be available. The importance of science lies not only in the creation of knowledge basic to technical applications. Our understanding of nature also forms the basis of our views of nature as well as the universe. It teaches us the importance of living in harmony with nature and sometimes it gives us insight in dealing with the forces of nature. The development of science enriches our view of nature and motivates us to carve out a better future.



Sampling seawater from a boat at Tokyo Bay in an experimental course for undergraduates.

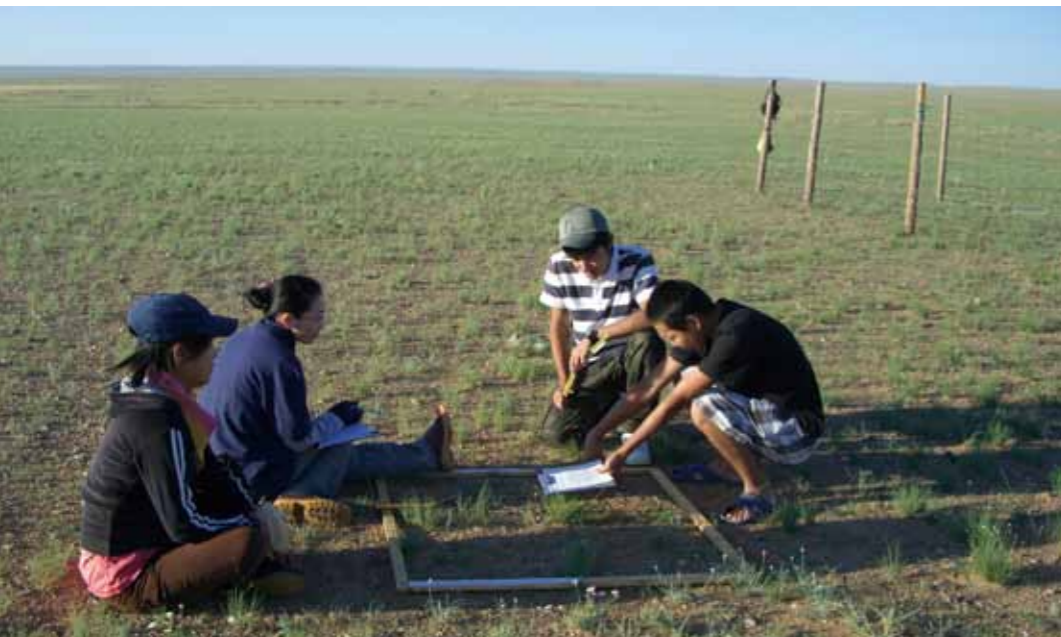


Chemical experiments being conducted.

Contact e-mail address

Academic Affairs for Undergraduate Students
kyoumu@adm.s.u-tokyo.ac.jp

Scholarships / Visas / Housing
ilo@adm.s.u-tokyo.ac.jp



**Bachelor of Agriculture/
Bachelor of Veterinary Medicine**

- Applied Life Sciences
- Environmental Resources Sciences
- Veterinary Medical Sciences

Faculty of Agriculture

農学部

Agricultural science covers a surprisingly wide spectrum of research activities. The fields of research and education in this science are arable land, forests and aquatic environments. We study life processes of animals, plants and micro-organisms, making full use of techniques in the natural and social sciences. In the twenty-first century, the key challenge for agricultural science is to develop a system to continuously harvest nature's bounty. Through its original course/major system, the Faculty aims at nurturing and training students who can tackle this challenge. The Faculty of Agriculture is largely divided into three Courses: the Applied Life Sciences, the Environmental Resources Sciences, and the Veterinary Medical Sciences.

Students in the Applied Life Sciences Course learn about life processes related to plant and animal life from molecular and cellular levels to individual and group levels. This Course is further divided into six majors according to the specialized fields covered. The Environmental Resources Sciences Course, which is divided into eight majors, deals with issues of food, resources and regional development through science and technology involving environmental conservation and planning. The Veterinary Medical Sciences Course aims at understanding life processes and diseases of animals and trains students in veterinary medicine and public health. This six-year Course comprises a single major.

The undergraduate students admitted belong to one of these 15 majors. Under this educational system, students learn subjects common to agricultural sciences, and systematically receive step by step education attaining a high level of specialization. Field Science is also studied utilizing affiliated facilities such as the Institute for Sustainable Agro-ecosystem Services located in Nishi-Tokyo City and seven university forests from Furano, Hokkaido, in the north to Aichi in the south. We also have a wide variety of field educational facilities including the Veterinary Medical Center, Animal Resource Science Center, and the Fisheries Laboratory.



Giant ginkgo trees on Yayoi Campus.



Faculty of Agriculture Building 3.

Contact e-mail address

Undergraduate Student Section
kyoumu@ofc.a.u-tokyo.ac.jp

Office for International Cooperation
and Exchange
oice@ofc.a.u-tokyo.ac.jp

International Student Section
ryugaku@ofc.a.u-tokyo.ac.jp



**Bachelor of Pharmaceutical Sciences/
Bachelor of Pharmacy**

- Department of Pharmaceutical Sciences
- Department of Pharmacy

Faculty of Pharmaceutical Sciences

薬学部

In order to discover new pharmaceutical drugs, it is necessary to learn about the mechanisms of life and the causes of diseases. We need to clarify life phenomena from the perspectives of biochemistry, molecular biology, cell biology, physiological chemistry, genetics and immunology.

The Faculty of Pharmaceutical Sciences of the University of Tokyo functions as a research center where "pharmaceuticals (drugs)," which are complex and require a high degree of perfection to develop, are studied under the aspects of "material," "living organism" and "medical care." That is, we are focusing on basic research before discovering drugs and concentrating our efforts on education to cultivate pharmaceutical specialists. Students of the Faculty of Pharmaceutical Sciences are provided with a curriculum rich in lectures and practice that are necessary to train pharmaceutical specialists. We also focus on dealing with economic issues relating to pharmaceuticals, providing adequate information to pharmacists and the public as well as training human resources knowledgeable in both pharmaceutical and business management for bio-venture business. Those who graduate from this Faculty actively work in universities, research institutes, pharmaceutical companies and health service agencies.

In 2006, the undergraduate pharmaceutical education system was drastically revised into a parallel system with a four-year course in the Department of Pharmaceutical Sciences and a six-year course in the Department of Pharmacy. The Department of Pharmaceutical Sciences (intake: 72) takes over the conventional role of training professional pharmaceutical researchers and continues to aim at training researchers with high-level competence. The Department of Pharmacy (intake: 8) has a six month practical training program in its curriculum in hospitals and pharmacies and aims to train pharmacists with high-level knowledge and skills.

The Department which students enter will be determined during the first year after entering the Faculty from the College of Arts and Sciences.



Lectures on specialized subjects for the second year students start in winter semester.



The construction of Pharmaceutical Sciences Building was completed in 1981.

Contact e-mail address

International Student Advising Room
isar-gsps@mol.f.u-tokyo.ac.jp



Bachelor of Medicine
• School of Medicine
Bachelor of Health Sciences
• School of Integrated Health Sciences

Faculty of Medicine

医学部

The Faculty of Medicine comprises both the School of Medicine and the School of Integrated Health Sciences. We are dedicated to the development of research and education in medicine, as well as addressing the problems of present-day medical systems. The Faculty is also dedicated to training medical staff and clinicians who can treat patients holistically. It also covers other medical fields such as nursing science and the training of nurses, as well as the connections among healthy people, medicine, and society. The Faculty of Medicine is affiliated with the University of Tokyo Hospital and both are located in Hongo, very close to each other. The Faculty of Medicine is active in many areas of basic medical research: neurosciences, immunology, oncology, cell biology, among others. Our researchers strive to clarify the mechanisms of disease and to establish new approaches to their treatment. The Faculty has a high reputation worldwide for the quality of its research in basic medical sciences, and every year many articles reporting the results of research done here are published in prestigious scientific journals such as *Nature*, *Cell*, and *Science*.

We also put a high priority on training and nurturing researchers in basic medical sciences. One example is the MD-researcher training program. Under this program, approximately ten students from each class of medical students engage in seminar-style small-group learning, and they participate fully in the activities of basic-science research laboratories. After four years, the results of each student's undergraduate research are presented in a graduation thesis. After graduation, students enter PhD programs. This enables them to prepare to undertake leading-edge medical-research projects while they are still studying basic subjects as undergraduates. Some students wish to obtain a doctorate degree and to become researchers as early as possible, and they may enter the PhD-MD program, in which they can work toward a PhD after completing two or three years of basic medical studies in undergraduate programs.



The University of Tokyo Hospital

Contact e-mail address

Educational Affairs Section
kyomu@m.u-tokyo.ac.jp

Office of International Academic Affairs
koryu2f@m.u-tokyo.ac.jp

Undergraduate Admissions

Enrolling in PEAK

The Programs in English At Komaba (PEAK) has a separate admissions process which is handled by the PEAK Undergraduate Admissions Office.

A brief outline of the application process for PEAK programs is given in Page 49 of this brochure but more details on the application process and the forms necessary for application are available for download from the PEAK website.

<http://peak.c.u-tokyo.ac.jp/how-to-apply/>

Transferring into GSC

Students wishing to transfer into the GSC program at UTokyo must have successfully completed or will be completing their first two years of studies in a comparable undergraduate program at an accredited higher educational institution outside of Japan with a high level of achievement before enrollment.

A brief outline of the application process for the GSC program is given in Page 51 of this brochure, but for more details on the application processes, necessary documents for submission and academic information, please go to the GSC website.

<http://www.s.u-tokyo.ac.jp/GSC/admissions/application.html>

Enrolling in Undergraduate Degree Programs Offered in Japanese

To be admitted to the University of Tokyo's undergraduate programs*, international applicants need to pass either the general screening test (the same test taken by graduates of high schools or equivalent in Japan) or the special screening test designed for graduates of foreign high schools. This section explains the special screening process. Furthermore, there are two classes, Class-1 and Class-2, for the special screening test. Below is an

explanation for the Class-1 screening, which is for applicants who are non-Japanese nationals without permanent residency in Japan. Please note that most undergraduate classes are taught in Japanese, with the exception of the PEAK and GSC courses mentioned above.

Accordingly, applicants are expected to gain sufficient mastery of the Japanese language before enrolling.

* Most programs take 4 years to complete, but the following take 6 years: Medicine (Faculty of Medicine), Veterinary Medical Sciences (Faculty of Agriculture), and Pharmacy (Faculty of Pharmaceutical Sciences).

Special Class-1 Screening for non-Japanese nationals without permanent residency

Below is an overview of the special screening requirements for 2015 enrollment. Those planning to apply for undergraduate enrollment through the special screening process are asked to obtain an application guidebook and carefully read the information listed in it. The guidebook can be obtained as indicated in "Requesting an Application Guidebook" in page 28.

The following information is from the 2015 application guidebook and may not apply to later academic years, so please be sure to read the application guidebook for the academic year of your planned enrollment.

Qualifications for Application

Application for Special Class-1 Screening is open to those who have acquired or expected to acquire the basic qualifications in the period from April 1, 2010 to March 31, 2015, and who have fulfilled or expected to fulfill the requirements listed below.

1. Basic Qualifications

Applicants must meet either qualification (1) or (2) below.

- (1) Have completed or scheduled to complete a course of education, at the last school attended and outside of Japan which is equivalent to Japan's 12-year course of school education, or be a person deemed to hold equivalent status by the Japanese Ministry of Education, Culture, Sports, Science and Technology.

(The last school attended must be physically located in a nation other than Japan, and, in principle, be recognized as part of the local jurisdiction's regular school education system. Furthermore, the school's course of education must be one that provides graduates with eligibility to apply for enrollment in universities. Graduates and prospective graduates of international schools, American schools outside the USA, or similar schools are urged to consult with the University of Tokyo Admissions Office as soon as possible, since they might not be eligible to apply or might encounter delays in the review of their application.)

A person deemed to hold equivalent status by the Japanese Ministry of Education, Culture, Sports, Science and Technology must be at least 18 years old and have passed any of the examinations equal to the Certificate for Students Achieving the Proficiency Level of Upper Secondary School Graduates at an institution other than in Japan.

(2) Be at least 18 years old and have earned any of the qualifications designated by the Japanese Ministry of Education, Culture, Sports, Science and Technology at an institution other than in Japan:

- an international baccalaureate offered by the International Baccalaureate, a foundation established under the Swiss Civil Code.
- the Abitur qualification to enroll in universities in the Federal Republic of Germany.
- the Baccalauréat qualification to enroll in universities in the French Republic.

2. Requirements

Applicants must satisfy all of the following requirements.

(1) Take all prescribed subject tests of the Examination for Japanese University Admission (EJU) held by the Japan Student Services Organization (JASSO) in June or November of 2014 (the tests

may be taken in Japanese or English). For applicants to Humanities and Social Sciences I-III, the prescribed subject tests are Japanese, Japan and the World, and Mathematics (Course 1). For applicants to Natural Sciences I-III, the prescribed subject tests are Japanese, Science (any two of Physics, Chemistry, and Biology), and Mathematics (Course 2). **Important:** Please be sure to take the correct Mathematics test, as failure to do so will result in rejection of your application in the preliminary screening.

- (2) Take TOEFL (iBT or PBT) or IELTS (Academic Module) within 2 years before applying.
- (3) In principle, applicants should have been enrolled in a foreign school for a continuous period of at least one year, including the final year, and should have graduated or be scheduled to graduate from that school (last school attended).

Application Period

December 1, 2014 to December 8, 2014 [for April 2015 enrollment]

* The application period may change every year. Please check the application guidebook for the academic year of your planned enrollment.

Application Procedure

1. How to Apply

- (1) Submit application documents (listed under (2) Application Documents below) by registered express mail only.
- (2) When sending the documents, make sure that you enclose all the application documents in an envelope securely attached with an address label for mailing application documents. Also, make sure that it will arrive during the application period.
- (3) Address
Admissions Office, The University of Tokyo
Hongo Branch, Japan Post Service Co., Ltd., "Poste Restante",
Bunkyo-ku, Tokyo 113-8799 JAPAN
- (3) Academic transcript and certificate of graduation (completion), etc. [necessary]
- (4) Recommendation* [necessary]
- (5) Examination admission card for Examination for Japanese University Admission for International Students (EJU) (copy) [necessary]
- (6) TOEFL (Official Score Report or Examinee Score Report) or IELTS (Test Report Form) [necessary]
- (7) Applicant's own passport (copy) [necessary]
- (8) Certificate of standardized examination score such as national examinations [optional]
- (9) School handbook, etc. of graduated (completed) or graduating (completing) high school (Copy is acceptable) [optional]
- (10) Address label for mailing application documents (registered express mail) [necessary]
- (11) Address label with 710-yen Japanese stamps or 6 International Reply Coupons for mailing examination documents* [necessary]

Note: * indicates format prescribed by the University of Tokyo. These formats are attached to the application guidebook every year, so make sure to obtain the application guidebook of your enrollment year. Also, check the details of application documents described therein.

2. Application Documents

- (1) Application Form* [necessary]
- (2) Photo (3×4cm) and receipt of your entrance examination fee pasted on the prescribed form* Examination fee JPY 17,000 (Bank transfer only. Japan Post Bank and Japan Post are not acceptable.) [necessary]

Those who were considered ineligible as a result of qualification screening, or those who had failed the primary screening, will be refunded with JPY 13,000. Examination fees already paid shall not be refunded for any other reasons.

Screening Process

The screening process is divided into primary and secondary screenings.

1. Primary screening

The primary screening is based on a comprehensive review of the following items.

- (1) Grades and other records from educational institutions from which the applicant graduated
- (2) EJU scores (June or November 2014 EJU)
- (3) TOEFL or IELTS scores
- (4) Scores from any standardized test taken in the applicant's home country

2. Secondary screening

Applicants who passed the primary screening will undergo a further screening process consisting of a written short essay and an interview.

Contact for Enquiry on Special Screening

Admissions Office, the University of Tokyo
7-3-1 Hongo, Bunkyo-ku, Tokyo 113-8654, Japan
TEL: +81-3-5841-2084, 2366 E-mail: nyuusi2@adm.u-tokyo.ac.jp
http://www.u-tokyo.ac.jp/stu03/e01_02_04_j.html (Japanese only)

EJU : Reference: Guidelines for 2014

Examination for Japanese University Admission for International Students

Application

- (1) Eligibility: International students who wish to study at the undergraduate level at universities or other such higher educational institutions in Japan
- (2) Date of exam: (1st Session) June 15, 2014 (2nd Session) November 9, 2014
- (3) Venues:
Within Japan: more than 10 places across the country
Outside Japan: Hong Kong, India (New Delhi), Indonesia (Jakarta and Surabaya), Malaysia (Kuala Lumpur), Mongolia (Ulaanbaatar), Myanmar (Yangon), Philippines (Manila), Republic of Korea (Seoul and Busan), Russia (Vladivostok), Singapore, Sri Lanka (Colombo), Taiwan (Taipei), Thailand (Bangkok) and Vietnam (Hanoi and Ho Chi Minh City)
- (4) Subjects: Japanese as a Foreign Language, Science, Japan and the World, Mathematics
- (5) Examination languages option: Japanese or English (except for the Japanese as a Foreign Language test, which is given in Japanese only)
- (6) Answering format: multiple-choice format (except for the writing section of the Japanese as a Foreign Language)

Contact for Enquiry on EJU

Japan Student Services Organization
Student Exchange Department, Testing Division
4-5-29 Komaba, Meguro-ku, Tokyo 153-8503, Japan
TEL: +81-3-6407-7457 E-mail: eju@jasso.go.jp
http://www.jasso.go.jp/index_e.html

Requesting an Application Guidebook

There are three ways to obtain a guidebook.

- (1) Download from the website
http://www.u-tokyo.ac.jp/stu03/e01_02_04_j.html (Japanese only)
- (2) Obtain by mail within Japan
Refer to the following website:
http://www.u-tokyo.ac.jp/stu03/e01_02_05_j.html (Japanese only)
- (3) Visit the University of Tokyo campus
Guidebooks are distributed at the following locations:
· Hongo Campus: Main Gate, Akamon (Red Gate), Information Center (Tatsuoka Gate)
· Komaba Campus: Main Gate



Graduate Schools

Graduate Schools for Law and Politics

Graduate School of Public Policy

Graduate School of Economics

Graduate School of Humanities and Sociology

Graduate School of Education

Graduate School of Arts and Sciences

Graduate School of Interdisciplinary Information Studies

Graduate School of Frontier Sciences

Graduate School of Engineering

Graduate School of Information Science and Technology

Graduate School of Science

Graduate School of Mathematical Sciences

Graduate School of Agricultural and Life Sciences

Graduate School of Pharmaceutical Sciences

Graduate School of Medicine



Graduate Schools for Law and Politics

大学院法学政治学研究科

The Graduate Schools for Law and Politics is a governing body of four institutions in the field of Law and Political Science: the Master Program of the School of Legal and Political Studies, the Doctorate Program of the School of Legal and Political Studies, the School of Law, along with the Undergraduate Program. The aim of all programs in the Graduate Schools lies in the advanced study of legal and political institutions with each designed to meet the specific needs of students, the details of which are discussed below.

The School of Legal and Political Studies is the key institution for research on legal and political studies. Courses are designed to reflect the cutting edge of academic research in the fields of law and political science, where students are encouraged to pursue significant academic agenda, both theoretical and historical.

The Master Program of the School of Legal and Political Studies offers a comprehensive program in the field of law and politics which aims to support future careers in related fields. Students are requested to pursue their individual academic agenda, in close contact with their research advisors, and submit a Master's thesis.

Students wishing to become researchers and educators in institutions of higher learning are encouraged to apply for the Doctorate Program of the Graduate Schools for Law and Politics, where advanced training in law and political science are offered, mainly for those aiming to pursue academic careers. The graduates of the Doctorate Program now compose the very cream of academic society in Legal and Political Studies.

The School of Law is a graduate school which trains future practitioners in the field of law. Although a professional school, the curriculum includes a wide array of subjects so that the graduates of the program will not only be experts in the field of law, but will also share a strong sense of ethics and responsibility as required in the future practice of law. Students wishing to pursue academic careers may apply for the Doctorate Program of the Graduate Schools for Law and Politics upon graduation from the School of Law.

- Master's Degree: Master of Laws/ Master of Arts/Master of Philosophy**
- Positive Law Course
- Basic Law Course
- Political Science Course
- Doctorate Degree: Doctor of Laws/ Doctor of Philosophy**
- Positive Law Course
- Basic Law Course
- Political Science Course
- Professional Degree: Juris Doctor**
- School of Law



Scene of a seminar at the summer school.



Scene of a mock trial in the School of Law

Contact e-mail address

Graduate School Section
jjin@j.u-tokyo.ac.jp

International Student Adviser
jryugaku@j.u-tokyo.ac.jp



Photographer: Yuji Ueno

Professional Degree:
Master of Public Policy

- Legal Policy Program
- Public Management Program
- International Public Policy Program
- Economic Policy Program
- Master of Public Policy, International Program (MPP/IP)
- Master of Public Policy, Campus Asia Program (MPP/CAP)

Graduate School of Public Policy

大学院公共政策学教育部

The Graduate School of Public Policy (GraSPP) was founded in April 2004 to offer a Master's program for public policy (MPP). GraSPP is a professional graduate school established with the aim of training policy professionals planning, implementation, and evaluation—involved in a wide range of public policy challenges.

The University of Tokyo has over the years nurtured many individuals involved in the planning and implementation of public policy for the society. Many of those people have become leaders in their respective fields, but at the same time the abilities and qualities required of the leaders for sustaining society are diversifying and changing substantially.

Since its inception, GraSPP has established a reputation for training individuals to have the ability to devise and implement effective policies and systematic solutions. Furthermore, we continue to strengthen our research and education capacities through an ongoing process of review and revision.

GraSPP is bolstering internationalization efforts. In the 2010 academic year, we launched the Master of Public Policy, International Program (MPP/IP), and we actively seek enrollment from overseas. MPP/IP program is attracting young professionals from Asia and the rest of the world with scholarships from international financial institutions such as the World Bank, the Asian Development Bank and the International Monetary Fund.

As of April 2014, GraSPP has student exchange agreements with Columbia University, the National University of Singapore, the University of California-San Diego, Sciences Po Paris, the Hertie School of Governance (HSoG), Peking University (PKU), Seoul National University (SNU), Heidelberg University and FGV-EAESP. In November 2009, GraSPP concluded an agreement for a double degree program (which allows students to receive two degrees from two graduate schools) with the National University of Singapore as the first double degree program at the University of Tokyo. Since then, we have arranged additional double degree programs with Columbia University, Sciences Po Paris, HSoG, SNU, and PKU.



Warm welcome and support by Japanese and senior international students facilitates new international students' soft landing in Japan.



Many courses are held in the Administration Bureau Building 2.

Contact e-mail address

Graduate School Office
ppin@j.u-tokyo.ac.jp

International Student Advisor
pryugaku@pp.u-tokyo.ac.jp



Graduate School of Economics

大学院経済学研究科

The Graduate School of Economics has been one of the leading institutions in both academic research and education in economics. The Department has produced a number of successful graduates who are active in academics, business and the public sector.

The school is divided into five departments: Economic Theory (including Statistics), Studies of Contemporary Economy, Management, Economic History, and Finance. Each department, however, is open to one another and students are able to find their optimal mix of diverse courses.

There is also a Master's degree program in English called UTIPE, International Program in Economics where Japanese language proficiency is not required to pursue a degree.

UTIPE offers a mathematics-oriented two-year Master's program (since April 2010) and a three-year doctorate program (since April 2012). It is best suited for students who wish to conduct research by using Macroeconomics, Microeconomics, and/or Econometrics as research methods.

Our faculty is recognized internationally as some of the top researchers in their respective areas. Our faculty publishes regularly in top international economics journals such as: The American Economic Review, Econometrica and the Journal of Political Economy. Five of our current faculty members are Fellows of the Econometric Society. And our faculty has received numerous other awards and grants recognizing our research accomplishments. Members of our faculty have diverse backgrounds and training. We have faculty members from Europe, North America and other parts of Asia, as well as Japan. And many of our faculty have pursued doctorate degrees and/or worked in leading overseas academic institutions.

If you are looking for an exciting and challenging research environment located in one of the most dynamic and livable cities in Asia, consider degree programs in the Graduate School of Economics at the University of Tokyo.

Master's Degree: Master of Economics
Doctorate Degree: Doctor of Philosophy

- Economic Theory
- Studies of Contemporary Economy
- Management
- Economic History
- Finance



The Economics Research Bldg as seen from top of the Faculty of Medicine Experimental Research Bldg.



Individual workspace in the Library of Economics.

Contact e-mail address

Group Administering International Affairs (GAIA)
advisefs@e.u-tokyo.ac.jp



Master's Degree: Master of Arts
Doctorate Degree: Doctor of Philosophy/
Doctor of Letters/Doctor of Psychology/
Doctor of Sociology/
Doctor of Social Psychology

- Division of General Culture
- Division of Japanese Studies
- Division of Asian Studies
- Division of European and American Studies
- Division of Socio-cultural Studies
- Division of Cultural Resources Studies
- Division of Korean Studies

Graduate School of Humanities and Sociology

大学院人文社会系研究科

The Graduate School of Humanities at the University of Tokyo was established after World War II in 1953, and in 1963 part of it was transferred to the newly established Graduate School of Education. In 1995, the Graduate School of Humanities merged with the Graduate School of Sociology and was reestablished as the Graduate School of Humanities and Sociology.

The Graduate School of Humanities and Sociology consists of the following seven Divisions: General Culture; Japanese Studies; Asian Studies; European and American Studies; Socio-cultural Studies; Cultural Resources Studies; and Korean Studies. Each Division is further divided into smaller departments. For example, the Japanese Studies Division consists of Japanese Language and Literature as well as Japanese History, while the Asian Studies Division offers Chinese Language and Literature; East Asian Thought and Culture; Indian Literature, Indian Philosophy and Buddhist Studies; Islamic Studies; and Asian History. Most of these subdivisions correspond to the Departments of the Faculty of Letters.

With long-standing academic traditions that date back to 1877 when the Faculty of Letters was first established at the University of Tokyo, the Graduate School has developed on the basis of research not only in Japan but also throughout the world. It has continuously endeavored to open up new areas too. Fields representative of our innovations include Cultural Resources Studies, Applied Ethics, and Life and Death Studies, which collaborate with other faculties and convey the fruits of the latest research in various ways to all levels of the university. The Center for Evolving Humanities is further expected to provide a broader base for new developments in research and education in the humanities and sociology.

We firmly believe that the humanities, far from being "antiquated," are indeed brimming with new possibilities. We aim for a true community of students and teachers with a spirit of quest and creativity, and are committed to transmitting the fruits of research to people not only in Japan but also around the world.



Sunlight falling onto the Bldg 3, Faculty of Letters.

Contact e-mail address

Office of Graduate School
in@l.u-tokyo.ac.jp

Office of International Students and Scholars
oissjin@l.u-tokyo.ac.jp



Master's Degree: Master of Arts
Doctorate Degree: Doctor of Philosophy

- Department of Integrated Educational Sciences
- Department of Advanced Research in School Education

Graduate School of Education

大学院教育学研究科

The Graduate School of Education offers a wide variety of courses and programs for providing students with specialized knowledge of educational research as well as practical skills in teaching, thereby helping students to gain deep insight into the structure and function of education and to study them academically. The Graduate School also helps students to understand the relation between education and society so that they can contribute to the well-being of society using their knowledge and expertise in education.

The Graduate School of Education has two departments: the Department of Integrated Educational Sciences and the Department of Advanced Research in School Education. The former consists of seven divisions: Basic Theories of Education, Social Sciences in Education, Lifelong Learning Infrastructure Management, University Management and Policy, Educational Psychology, Clinical Psychology, and Physical and Health Education. The latter consists of three divisions: Professional Development of Teachers, Curriculum Development, and School Improvement and Educational Policy Studies. The Graduate School is also working in close collaboration with the Secondary School attached to the Faculty of Education, the Center for Excellence in School Education, the Center for Psychological Services, and the Center for Barrier-Free Education in various educational activities and research projects.

The Graduate School of Education is open to the world and accessible to any postgraduate student or researcher who is interested in the research and education conducted here. Over 60 international students from various countries are enrolled, and researchers from all over the world actively participate in our international exchange programs. The Graduate School is not only international but also interdisciplinary, providing a wide variety of educational and research programs that integrate different sciences to investigate the way education is related to people, society, and culture.



The Graduate School of Education Building.

Contact e-mail address

Student Affairs Section,
Graduate School of Education
gakuseishien@p.u-tokyo.ac.jp



http://www.c.u-tokyo.ac.jp/eng_site/

- Master's Degree: Master of Arts/
Master of Science**
Doctorate Degree: Doctor of Philosophy
- Department of Language and Information Sciences
 - Department of Interdisciplinary Cultural Studies
 - Department of Area Studies
 - Department of Advanced Social and International Studies
 - Department of Multidisciplinary Sciences
 - Graduate Program on Human Security
 - Graduate Program on Global Humanities
 - Graduate Program on Global Society
 - Graduate Program on Environmental Sciences

Graduate School of Arts and Sciences

Located on the Komaba Campus, the Graduate School of Arts and Sciences (GSAS) is a comprehensive graduate school that pioneers new research in fields ranging from basic science to human security. The GSAS was formally founded in 1983 out of the undergraduate College of Arts and Sciences, where graduate teaching had already been offered for some time. Since its founding, education and research at the GSAS has been based on an interdisciplinary, globally-minded approach aimed at training not only specialized researchers but also highly-advanced professionals who can contribute to the practical world.

The GSAS consists of four humanities and social sciences departments, Language and Information Sciences, Interdisciplinary Cultural Studies, Area Studies, and Advanced Social and International Studies, and one science department, Multi-Disciplinary Sciences, which in turn is divided into three sub-departments: Basic Science, Life Sciences, and General Systems Studies.

The GSAS today has some 370 full-time faculty, roughly 570 Master's students, and nearly 770 doctoral students. The GSAS has long welcomed students from overseas. Currently, some 250 international students from over 30 countries are matriculated in all five of its departments. In 2012, the Graduate Program on Global Society and the Graduate Program on Environmental Sciences were founded for students who wish to complete their degrees entirely in English.

The GSAS also has launched a number of innovative programs in recent years, including the Human Security Program (founded in 2004), the Science Interpreter Training Program (2005), the European Studies Program (2006), the Japan-Germany Inter-Graduate School Program, and the Graduate Program on Global Humanities (2012). In 2013, it also started Integrated Human Sciences Program for Cultural Diversity (IHS) in collaboration with the Graduate School of Interdisciplinary Information Studies.



The Lecture Theater on the Komaba Campus.



The clock tower, one of the landmarks of the Komaba Campus.

Contact e-mail address

Graduate School Section
daigakuin@adm.c.u-tokyo.ac.jp

International Student Section
ryugakusei-g@adm.c.u-tokyo.ac.jp

大学院総合文化研究科

<http://www.iii.u-tokyo.ac.jp/en/>

- Master's Degree: Master of Arts and
Sciences/Master of Arts**
Doctorate Degree: Doctor of Philosophy
- Department of Interdisciplinary Information Studies



Graduate School of Interdisciplinary Information Studies

"Information" has become a key concept in the understanding of all aspects of life and society in the twenty-first century. It is against this background that the Interfaculty Initiative in Information Studies (III) was founded in April 2000. The aim of this new type of graduate school has been to fulfill the demand for advanced comprehensive education and research in interdisciplinary information studies. In April 2004, its organization was further strengthened as a result of merger with the Institute of Socio-information and Communication Studies (ISICS), thus inheriting a long tradition of journalism, media and communication research developed at the University of Tokyo since the earlier half of the twentieth century.

Existing alongside the III from the time of its foundation is the Graduate School of Interdisciplinary Information Studies (GSII). Whereas the III itself is devoted to research and is an organization for faculty, the GSII is an organization for students and is focused on the equally important task of education.

The III interconnects the numerous fields of information research in existing departments of the University. It is founded on a principle of inclusive interdisciplinarity and transcends the division between humanities, social science, information science and technology. The GSII is a similarly inclusive organization bringing together a diverse range of fields united by the overarching theme of "information" creating a learning environment of unprecedented depth and breadth.

The GSII is organized into five courses: Socio-information and Communication Studies, Cultural and Human Information Studies, Emerging Design and Informatics, Applied Computer Science, and the recently established International Master's/Doctorate Degree Program: Information, Technology, and Society in Asia (ITASIA). Although instruction in the first four of these courses is mostly through the medium of Japanese, classes and supervision in the last mentioned program (ITASIA) are conducted entirely through the medium of English.



Gakkan Commons, III Fukutake Hall.



III / GSII Main Building.

Contact e-mail address

Academic Affairs Section
gakumu@iii.u-tokyo.ac.jp

Graduate Schools



Master's Degree: Master of Science/Master of Integrated Biosciences/Master of Environmental Studies/Master of Sustainability Science/Master of International Studies
 * The field of the degree differs according to department

Doctorate Degree: Doctor of Philosophy

- Department of Advanced Materials Science
- Department of Advanced Energy
- Department of Complexity Science and Engineering
- Department of Integrated Biosciences
- Department of Medical Genome Sciences
- Department of Natural Environmental Studies
- Department of Ocean Technology, Policy, and Environment
- Department of Environment Systems
- Department of Human and Engineered Environmental Studies
- Department of Socio-Cultural Environmental Studies
- Department of International Studies
- Department of Computational Biology
- Graduate Program in Sustainability Science
- * The Department of Medical Genome Sciences and the Department of Computational Biology are to be integrated in April 2015, and will become the Department of Computational Biology (tentative name).

Graduate School of Frontier Sciences

大学院新領域創成科学研究科

The aim of education and research activities of the Graduate School of Frontier Sciences (GSFS) is creating new academic fields that challenge unexplored frontiers in resolute pursuit of solutions to the most recent problems human beings face, endeavoring to help humanity build a better future society.

GSFS is a new graduate school for Master's and doctorate students established in 1998 on the Kashiwa Campus. Grounded in the notions of "intellectual exploration" and "transdisciplinarity", GSFS addresses unexplored academic frontiers that have emerged by connecting gaps between existing independent disciplines and synthesizing them into a holistic approach. GSFS consists of three divisions: Division of Transdisciplinary Sciences, Division of Biosciences, Division of Environmental Studies, as well as one independent department, the Department of Computational Biology.

Examples of research areas include nano-science, substances and materials, energy, information, complexity science, bioscience, bioinformatics, urban and natural environment, environmental ethics, resource management and international cooperation, among many others. All divisions and departments conduct research and educational activities in these academic areas from their own perspectives. Students who have already gained a high-degree of specialization in existing academic areas have opportunities to gain multiple perspectives at GSFS. This will be achieved by applying a horizontal standard – i.e., exposing students to multiple perspectives covering various academic areas – to students who have achieved excellence through an in-depth vertical standard within their original disciplines.

GSFS has been collaborating with other research institutions located on the Kashiwa Campus, and is constantly seeking ways to develop new academic fields for designing a better future. In addition, GSFS has started accepting international undergraduate students in UTSIP Kashiwa (summer internship program with financial aid), which we believe to be an invaluable opportunity for students seeking research opportunities at GSFS. The Graduate School of Frontier Sciences looks forward to welcoming young, motivated researchers of the future that have the courage to venture into undeveloped frontiers.



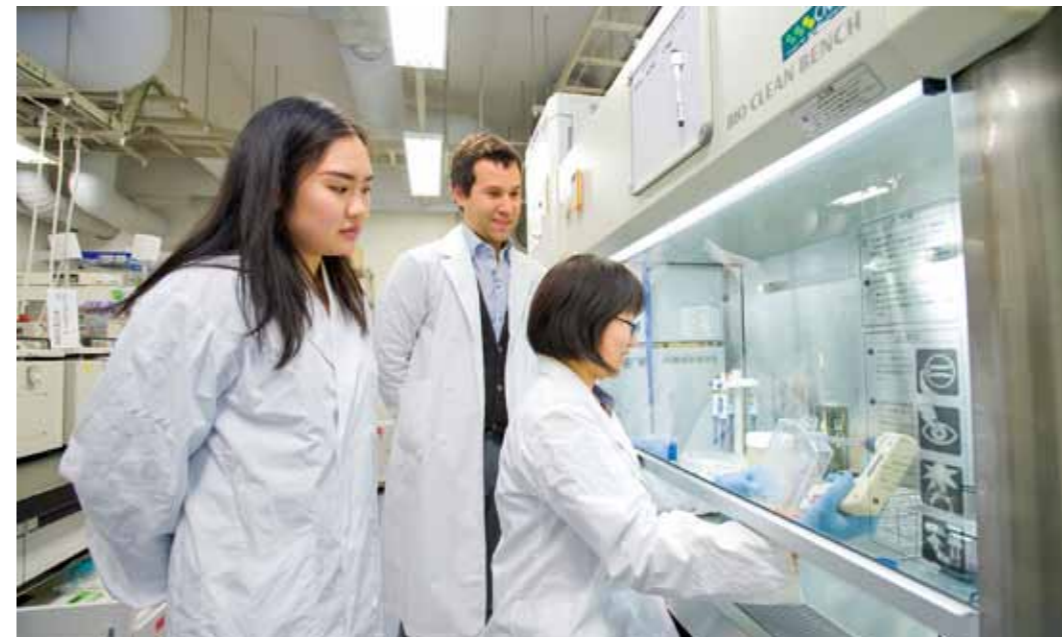
Japanese culture experience.



Student discussion.

Contact e-mail address

Student Affairs Section
k-kyomu@k.u-tokyo.ac.jp



Master's Degree: Master of Engineering/ Master of Nuclear Engineering (Nuclear Professional School only)
Doctorate Degree: Doctor of Philosophy/ Doctor of Engineering

- Department of Civil Engineering
- Department of Architecture
- Department of Urban Engineering
- Department of Mechanical Engineering
- Department of Precision Engineering
- Department of Systems Innovation
- Department of Aeronautics and Astronautics
- Department of Electrical Engineering and Information Systems
- Department of Applied Physics
- Department of Materials Engineering
- Department of Applied Chemistry
- Department of Chemical System Engineering
- Department of Chemistry and Biotechnology
- Department of Advanced Interdisciplinary Studies
- Department of Nuclear Engineering and Management
- Department of Bioengineering
- Department of Technology Management for Innovation
- Nuclear Professional School

Graduate School of Engineering

大学院工学系研究科

The Graduate School of Engineering has 18 departments featuring principal engineering technology spanning many fields. The School actively supports the deepening of existing fields of engineering research and seeks to expand current innovative academic fields.

World-leading and cutting-edge researches are conducted at the School and collaborations between top-ranked universities and research facilities around the world have been conducted.

Based on the idea of a "Bilingual Campus", the Graduate School of Engineering has been working to enhance the internationalization of the campus. In order to implement education that does not make a distinction between Japanese and foreign students, we aim to bring the number of lectures conducted in English up from 50% to approximately 70% in the next decade. The total number of international students at the Graduate School of Engineering has already climbed to approximately 1,000, making it the largest group of foreign students at the University of Tokyo. The percentage of international students enrolled in the doctorate program has now reached over 40%.

The Graduate School of Engineering has established a number of special programs whose lectures and research are conducted entirely in English. Several excellent students in each program will be supported by the Japanese Government (MEXT) Scholarship or the University of Tokyo Fellowship. In 2009 the school launched the "Master's Global 30 Program" and started accepting full-time students for three programs, allowing students to attain their degree through education in English. In this way, these programs conducted in English are being enhanced and lead the rest of the university.

Full and continuous support for overseas students is important, as is the further internationalization of Japanese students. At the Graduate School of Engineering, the concept of further internationalization in education and research is continuously scrutinized, and great effort is devoted to the enrichment of overseas student education and the expansion of international research exchange.



A scene of a design studio at the Department of Architecture (Global 30 program).



Engineering Building No.3, newly built in 2013.

Contact e-mail address

Office for Academic Affairs Graduate Team
adm-daigakuin@t-adm.t.u-tokyo.ac.jp

Office for International Students
ryugakusei@t-adm.t.u-tokyo.ac.jp

Office for International Cooperation and Exchange
t-oice@t-adm.t.u-tokyo.ac.jp



Master's Degree: Master of Information Science and Technology
 Doctorate Degree: Doctor of Philosophy/ Doctor of (one of the six departments' name)

- Department of Computer Science
- Department of Mathematical Informatics
- Department of Information Physics and Computing
- Department of Information and Communication Engineering
- Department of Mechano-Informatics
- Department of Creative Informatics

Graduate School of Information Science and Technology

Information is at the core of society and intelligence in the twenty-first century. The ever-rising dependence on information science and technology in modern society demands both constant reinforcement of the foundations and the creation of new ideas. It is also vital that we advance intelligent information systems that function as the brain and nervous system of our society. It was to address these needs that the Graduate School of Information Science and Technology (IST) was established in April 2001.

Six departments collaborate to lay the foundations for core science and technology in the field of informatics while forging a base for international exchange of cutting-edge information science and technology. Graduate students willing and able to manifest leadership at the global level are cultivated through both study and practical research participation.

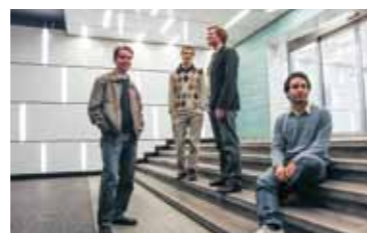
An additional objective is to make the Graduate School accessible. Examples of this effort include the establishment of the Affiliated Visiting Professor Chairs and the Program for Industrial Collaborative Research as a framework for fruitful partnerships with industries. An international research and education alliance is also promoted with universities and research institutions around the world.

In October 2010, we started the English Program in Information Science and Technology. This program seeks to answer the needs of an international age by allowing graduate students in the program to carry out their studies in English. All courses needed to fulfill graduation requirements are available in the English Program. Those who successfully complete the program will receive a certified degree, with the only difference being studies are conducted entirely in English instead of in Japanese.

IST is structured to facilitate the pooling of the wisdom and intelligence of information science and technology at the University of Tokyo, and to act as an innovative base of graduate school-level education and research, targeting advanced information science and technology to better serve the needs of the twenty-first century.



In the supercomputer room.



IST Students

Contact e-mail address

Office of International Relations,
 Graduate School of Information Science and Technology (IST)

ist_oir@adm.i.u-tokyo.ac.jp

大学院情報理工学系研究科



Master's Degree: Master of Science
 Doctorate Degree: Doctor of Philosophy/ Doctor of Science

- Department of Physics
- Department of Astronomy
- Department of Earth and Planetary Science
- Department of Chemistry
- Department of Biological Sciences

Graduate School of Science

The Graduate School of Science conducts a broad range of education and research in science. The objectives of science are to understand the mechanisms of nature and to pursue the universal laws that govern them. In most cases, scientific research does not aim for immediate applications but is advanced in accordance with the intellectual interests of diverse researchers. The deep understanding of nature gained as a result has not only enhanced through its various applications, the convenience of everyday life we experience today, but it has also enriched our understanding of the world and universe. Instruction on concepts and methodologies of the physical sciences is given to students who will lead the next generation, to develop them into internationally-minded individuals armed with creativity, knowledge and means to solve as yet unknown problems.

In most cases graduate students are affiliated with a particular laboratory and proceed with research on a variety of topics under the guidance of teaching staff. Concurrently, they are able to deepen their knowledge concerning their field of specialization and related areas through lessons and seminars. For the two-year Master's program and the subsequent three-year doctorate program, students immerse themselves in research in order to explain the mechanisms of nature by means of a profound interaction with nature itself. The results of their research are compiled as a Master's thesis or doctorate dissertation and, through examination of their theses, students will be conferred a Master's or doctorate degree as a result. Naturally tackling unresolvable questions is immensely difficult. However it is not uncommon that great discoveries are made from research led by graduate students. New ideas developed by young minds in defiance of existing concepts are indispensable for research in the physical sciences.

大学院理学系研究科



One of the photo-multipliers used in the Kamio-kande to detect neutrinos.



Examining a petri dish sample using a microscope.

Contact e-mail address

Academic Affairs for Graduate Students
daigakuin@adm.s.u-tokyo.ac.jp

Scholarships / Visas / Housing
ilo@adm.s.u-tokyo.ac.jp



Master's Degree: Master of Mathematical Sciences
Doctorate Degree: Doctor of Philosophy
•Mathematical Sciences

Graduate School of Mathematical Sciences

大学院数理科学研究科

The Graduate School of Mathematical Sciences was established in 1992 to foster a culture of mathematical sciences from an international standpoint. The Graduate School grew out of two independent departments of mathematics that existed within the University of Tokyo: one in the Faculty of Science on the Hongo Campus and the other in the College of Arts and Sciences on the Komaba Campus. The long tradition of advanced scholarly research of the two former departments of mathematics helps the Graduate School function as an international research center. The building of the Graduate School of Mathematical Sciences is located now at the southeast edge of the Komaba Campus.

The number of faculty members is about 55. Members conduct leading-edge research in all fields of mathematical sciences. We host over 150 researchers from around the world each year and there are many overseas exchange students. In 2005, we established the Tambara Institute of Mathematical Sciences in Gunma Prefecture, a mountain villa devoted to seminars and summer schools with a full hostel service.

The principal aim of the program of education at the Graduate School is to train students to be researchers with expertise in mathematics and the ability to carry out advanced research, or to be future leaders in various areas of society with wide knowledge and professional skills of mathematical sciences. To support the highly motivated students, the Leading Graduate Course for Frontiers of Mathematical Sciences and Physics was started in 2012. The courses of the Graduate School are given in all fields of mathematical sciences, from algebra, geometry, and analysis to applied mathematics. The courses and seminars are in English when there are students who do not speak Japanese. Besides these courses, we invite many researchers from businesses and private universities to teach application-oriented subjects. The graduates of the School work at universities and colleges, research institutes, government ministries, financial and insurance institutions, information technology companies, and so forth.



The building of the Graduate School of Mathematical Sciences.



The Common Room of the Graduate School of Mathematical Sciences where students and faculty members gather together for coffee breaks.

Contact e-mail address

liaison@faculty.ms.u-tokyo.ac.jp



Master's Degree: Master of Science/
Master of Agricultural and Life Sciences
Doctorate Degree: Doctor of Philosophy
•Department of Agricultural and Environmental Biology
•Department of Applied Biological Chemistry
•Department of Biotechnology
•Department of Forest Science
•Department of Aquatic Bioscience
•Department of Agricultural and Resource Economics
•Department of Biological and Environmental Engineering
•Department of Biomaterial Sciences
•Department of Global Agricultural Sciences
•Department of Ecosystem Studies
•Department of Animal Resource Sciences
•Department of Veterinary Medical Sciences

Graduate School of Agricultural and Life Sciences

大学院農学生命科学研究科

Research at the Graduate School of Agricultural and Life Sciences covers a wide range of fields. Arable land, forests and seas all form the target of our research – in general, any space that plants and animals can inhabit is a field of study for the Graduate School. We take a highly varied and multifaceted approach, examining research questions at all levels from the molecular and cellular, whole organism and further to the community and ecosystem levels. While scientific pursuits further enriches our store of the knowledge, the fruits of the researches directly lead to the betterment and prosperity of humankind. The most pressing challenge in the first half of this century is the shift towards sustainable societies. Our missions are to respond to this challenge through advancements in food, environment, and life sciences, and equip the students to contribute to the researches and policy making of the next generation.

Our research and educational activities are extended across the globe. The Graduate School has signed agreements and memorandums with universities not only across Asia but around the world to pursue academic exchanges and collaborative researches. Presently more than 240 international students are enrolled in our Graduate School. We have 12 departments and 10 affiliated facilities with advanced research capacities in diverse fields that meet global standards. Our departments include Applied Biological Chemistry and Biotechnology, which are highly competitive with European and North American universities in molecular researches. On the other hand, Global Agricultural Sciences employs international and interdisciplinary researches in efforts to resolve the problems facing developing countries.

Overseas students at our Graduate School can experience world-class research on the road to finding their career path with high motivation.



Students' work displayed during the May Festival (Gogatsu-sai).



Fieldwork at the University Farm

Contact e-mail address

Graduate Student Section
daigakuin@ofc.a.u-tokyo.ac.jp

Office for International Cooperation and Exchange
oice@ofc.a.u-tokyo.ac.jp

International Student Section
ryugaku@ofc.a.u-tokyo.ac.jp



Master's Degree: Master of Science
Doctorate Degree: Doctor of Philosophy
• Department of Pharmaceutical Sciences
• Department of Pharmacy

Graduate School of Pharmaceutical Sciences

大学院薬学系研究科

Pharmaceutical Sciences is an academic field that covers development of pharmaceuticals and their applications. The field encompasses fundamental, life-related substances and their interactions with life. Our mission is to achieve the highest standard in academic research as well as in training and educating the future leaders of pharmaceutical sciences who will contribute to the development of pharmaceutical sciences and basic life sciences, leaders who can serve in medical administration, and also pharmacists who can play an active role in highly advanced medical care.

The Graduate School of Pharmaceutical Sciences has long been conducting leading-edge research in nearly all fields essential to drug discovery, and is now spearheading an initiative for establishing new methodologies for the science of drug discovery, creating new research fields unlimited by conventional boundaries in the midst of increasing global competition, and promptly applying new discoveries to drug development.

The School's education and research program has focused on developing human resources for basic pharmaceutical science and drug discovery, but is now expanding its focus to include medical pharmaceuticals as well. This step is being taken to respond to new needs that are emerging from the increasing separation of pharmacies from clinics and from the expanding roles of pharmacists. And as bioscience continues to rapidly advance, it is vital to review the targets of drug discovery—diseases—from an entirely new viewpoint.

Japan's pharmaceutical education system changed in 2006, and a four-year system to train pharmaceutical researchers and a six-year system to train pharmacists were newly started. The School has also become more advanced and more aggressive; in 2010 we started a Master's program for graduates of the four-year program, and in 2012 we introduced a doctorate program for those wishing to pursue doctorate coursework after completing the Master's program and an English course was set up in this program. In 2012 we also introduced a doctorate program for graduates of the six-year program.



Buildings of Faculty and Graduate School of Pharmaceutical Sciences.



A two-day bus trip was held in Autumn. International students enjoyed the view from Mt. Fuji.

Contact e-mail address

International Student Advising Room
isar-gsps@mol.f.u-tokyo.ac.jp



Master's Degree: Master of Health Science/ Master of Medical Science
Doctorate Degree: Doctor of Medical Science/Doctor of Philosophy/Doctor of Health Science
Professional Degree: Master of Public Health
• Department of Molecular Cell Biology
• Department of Functional Biology
• Department of Pathology, Immunology and Microbiology
• Department of Radiology and Biomedical Engineering
• Department of Neurosciences
• Department of Social Medicine
• Department of Internal Medicine
• Department of Reproductive, Developmental and Aging Sciences
• Department of Surgical Sciences
• Department of Health Sciences and Nursing
• Department of International Health
• Department of Medical Science (Master's degree program)
• School of Public Health (Professional degree program)

Graduate School of Medicine

大学院医学系研究科

The Graduate School of Medicine promotes leading-edge research to cure disease, improve health and illuminate the mechanisms underlying the phenomena of life. We do research and we teach in all areas of health and medicine, with the goal of fostering talented researchers to be tomorrow's international leaders in their fields. We have 13 departments, and programs that grant four types of degrees: Doctorate Degree in Medical Science, Doctorate Degree in Health Science, Master's Degree, and Professional Degree.

The Doctor of Medicine coursework has various programs: Molecular Cell Biology, Functional Biology, and Social Medicine as basic medical sciences; Internal Medicine, Reproductive, Developmental and Aging Science, and Surgical Science for clinical medicine; and Pathology, Immunology and Microbiology, Radiology and Biomedical Engineering, and Neuroscience for a fusion of the basic medical sciences with clinical medicine.

Health Sciences comprises the Department of Health Sciences and Nursing and the Department of International Health. The Department of Health Sciences and Nursing covers many areas in health sciences and nursing. We provide training and research opportunities aimed at maintaining health and preventing disease. We also offer health-practitioner and nursing courses to enhance the skills of practicing nurses. The Department of International Health aims to improve health worldwide through international cooperation. This unique program transcends conventional departmental boundaries.

The Department of Medical Science provides Master's degree programs for students who did not graduate from programs in dentistry or veterinary science to train researchers and educators in a wide range of basic medical fields.

The School of Public Health (a professional degree program) was established in 2007 to train highly-skilled professionals who will play a leading role in maintaining, enhancing, and restoring the health of patients, people in the community, and people throughout Japan, as well as improving their quality of life.



Faculty of Medicine Experimental Research Bldg.

Contact e-mail address

Graduate Student Affairs Section
in@m.u-tokyo.ac.jp

Office of International Academic Affairs
koryu2f@m.u-tokyo.ac.jp

Admission Information for Graduate Schools

Please use the links given below for the relevant graduate schools for detailed information on admission dates and application procedures. Contact details have been given for those who have questions that are not answered by this brochure or the relevant graduate school's website.

Degree Programs offered in English can be found on page 48.

JLPT (Japanese-Language Proficiency Test)

JLPT (Japanese-Language Proficiency Test) is a test to measure and certify the Japanese language proficiency of those whose native language is not Japanese. The 'new' JLPT introduced in 2010 focuses on communication abilities to meet more diverse students' needs. JLPT is jointly organized by the Japan Foundation and JEES (Japan Educational Exchanges and Services). More information about the JLPT can be obtained from: <http://www.jlpt.jp/e/>

Graduate School	Degree	Admissions information available on following websites	Japanese Language requirements	English Test Available	Contact e-mail Address	No. of International Students to No. of Students
Law and Politics	Master's / Doctorate Juris Doctor	www.j.u-tokyo.ac.jp/is/gaikokujin_e.html	Basic to advanced knowledge of the Japanese language is essential for enrollment. The number of courses given in English is rapidly increasing, but the majority of classes are given in Japanese.	No	jjin@j.u-tokyo.ac.jp jryugaku@j.u-tokyo.ac.jp	69/675 (10.2%)
Public Policy	Professional Master's	www.pp.u-tokyo.ac.jp/admissions/ (Japanese only) www.pp.u-tokyo.ac.jp/en/mppip/?page_id=9 (for MPP/IP only)	No Japanese required.	No	ppin@j.u-tokyo.ac.jp	92/262 (35.1%)
Economics	Master's / Doctorate	www.gaia.e.u-tokyo.ac.jp/is/gs-e.html	At least JLPT Level N1.	No	advisefs@e.u-tokyo.ac.jp	60/277 (21.7%)
Humanities and Sociology	Master's / Doctorate	www.l.u-tokyo.ac.jp (Admissions information in Japanese only)	The required level of Japanese language proficiency varies according to the field of specialization. Please refer to the guidelines for applicants to the Master's and doctorate program of the Graduate School of Humanities and Sociology.	No	in@l.u-tokyo.ac.jp	143/783 (18.3%)
Education	Master's / Doctorate	www.p.u-tokyo.ac.jp/english/admission-information	At least JLPT Level N1.	No	gakuseishien@p.u-tokyo.ac.jp	49/444 (11.0%)
Arts and Sciences	Master's / Doctorate	www.c.u-tokyo.ac.jp/graduate/admission/master-doctor/index.html (Japanese only)	A level sufficient for understanding lectures and reading academic literature. In some departments and programs, students may write their Master's or doctorate thesis in a language other than Japanese.	No	daigakuin@adm.c.u-tokyo.ac.jp	262/1,399 (18.7%)
Interdisciplinary Information Studies	Master's / Doctorate	www.iii.u-tokyo.ac.jp/en/admissions	The ability to read and understand literature written in Japanese is required for all courses except the Information, Technology, and Society in Asia (ITASIA) degree program.	Please see website for details	gakumu@iii.u-tokyo.ac.jp	113/398 (28.4%)
Frontier Sciences	Master's / Doctorate	www.k.u-tokyo.ac.jp/exam_e/index.html	Required level of Japanese language proficiency differs depending on the department. Please contact your prospective supervisor for the requirements.	Please see website for details	k-kyomu@kj.u-tokyo.ac.jp	248/1,385 (17.9%)
Engineering	Master's Professional Master's Doctorate	www.t.u-tokyo.ac.jp/etpage/international_applicants/index.html	At the graduate level more than 200 lectures are conducted in English. Consequently no specific level of Japanese is required. Please refer to departmental websites for more detailed information.	Contact department's administration office	adm-daigakuin@t-adm.t.u-tokyo.ac.jp	880/3,250 (27.1%)
Information Science and Technology	Master's / Doctorate	www.i.u-tokyo.ac.jp/edu/entra/index_e.shtml	Japanese proficiency is not required. Daily conversation level of Japanese language is preferred.	Yes	ist_ao@adm.i.u-tokyo.ac.jp	111/676 (16.4%)
Science	Master's / Doctorate	www.s.u-tokyo.ac.jp/en/admission/howtoapply.html	Proficiency in Japanese not required.	Yes	daigakuin@adm.s.u-tokyo.ac.jp	87/1,402 (6.2%)
Mathematical Sciences	Master's / Doctorate	www.ms.u-tokyo.ac.jp/kyoumu/examination.html (Japanese only) liaison.ms.u-tokyo.ac.jp/Guide.html	More than the absolute minimum required for basic Japanese conversation.	Yes (Maths problems)	skyoumu@ms.u-tokyo.ac.jp liaison@faculty.ms.u-tokyo.ac.jp	22/194 (11.3%)
Agricultural and Life Sciences	Master's / Doctorate	www.a.u-tokyo.ac.jp/english/applicants/index.html	For the doctorate program, Japanese language competency is not specifically required. However, as most lectures in the Master's program are given in Japanese, an ability to understand lectures is preferred.	Yes	daigakuin@ofc.a.u-tokyo.ac.jp	222/1,060 (20.9%)
Pharmaceutical Sciences	Master's / Doctorate	www.f.u-tokyo.ac.jp/~isarar/en/admission/examination.html	There is no Japanese language test in the entrance examination, but students are required to have basic Japanese conversational abilities.	Yes	isar-gsps@mol.f.u-tokyo.ac.jp	33/380 (8.7%)
Medicine	Master's Professional Master's Doctorate Program Doctorate Program of Medicine	www.m.u-tokyo.ac.jp/english/daigakuin/apply/appguidemain.html	Please contact the Office of International Affairs for details as the requirement level depends on the selected major.	Yes	in@m.u-tokyo.ac.jp	106/1,183 (9.0%)

Total 2,497/13,768 (18.1%)

Degree Programs offered in English at the University of Tokyo

Undergraduate/ Graduate School	Program No.	Program Title	Degree (Student intake)			
			Bachelor	Master's	Doctorate	Professional Master's
College of Arts and Sciences	1	PEAK - International Program on Japan in East Asia	(*)			
	2	PEAK - International Program on Environmental Sciences	(*)			
Faculty of Science	3	GSC (Global Science Course) [Department of Chemistry]	(5)			
Graduate School of Economics	4	International Program in Economics		(10)	(5)	
Graduate School of Arts and Sciences	5	Graduate Program on Global Society (GSP)		(10)	(3)	
	6	Graduate Program on Environmental Sciences (GPES)		(13)	(10)	
Graduate School of Science	7	Master's/Ph.D. Program at Frontier Science Research Center		(10)	(10)	
	8	Graduate Program for International Students		(10)	(10)	
Graduate School of Engineering	9	International Graduate Program in the Field of Civil Engineering and Infrastructure Studies		(10+)	(10+)	
	10	International Graduate Program in Mechanical, Electrical and Materials Engineering		(*)	(*)	
	11	Graduate Programs for Foreign Students in Urban and Environmental Studies		(*)	(*)	
	12	Special Graduate Program in Resilience Engineering		(*)	(*)	
	13	Special Graduate Program in Engineering for Systems Innovation		(*)	(*)	
	14	Special Graduate Program in Nuclear Engineering		(*)	(*)	
	15	Specially-promoted Graduate Program for Creation of the Asian Engineering Framework Based on Tripolar Alliances among Japan, China and Korea			(*)	
	16	International Bioengineering Program		(10)		
	17	Architecture and Urban Design Program		(10)		
	18	International Technology Management Program		(7)		
Graduate School of Agricultural and Life Sciences	19	International Program in Agricultural Development Studies (IPADS)		(8)	(4)	
Graduate School of Medicine	20	Global Health Sciences: Program in International Health		(21)	(9)	
Graduate School of Frontier Sciences	21	Environmental Studies Program - Asian Develop- ment Bank Japan Scholarship Program		(6)		
	22	Graduate Program in Sustainability Science - Global Leadership Initiative (GPSS-GLI)		(20+)	(10+)	
Graduate School of Information Science and Technology	23	The English Program in Information Science and Technology		(8)	(12)	
Graduate School of Interdisciplinary Infor- mation Studies	24	International Master's/Doctoral Degree Program: Information, Technology, and Society in Asia (ITASIA)		(14)	(8)	
Graduate School of Public Policy	25	Master of Public Policy, International Program (MPP/IP)				(30+)
	26	Master of Public Policy, Campus Asia Program (MPP/CAP)				(10+)
Number of programs			3	20	17	2
Total number of degree programs in English			42			

(*) Number of student intake has not been set.
(+) Approximate numbers

Please note that the information on the degree programs offered in English may change.
Please check the relevant websites for the latest information.

Degree Programs Offered in English

Undergraduate Degrees Offered in English

College of Arts and Sciences

•PEAK

1. International Program on Japan in East Asia
2. International Program on Environmental Sciences

Faculty of Science

3. GSC (Global Science Course)

Graduate Degrees Offered in English

Graduate School of Economics

4. International Program in Economics

Graduate School of Arts and Sciences

5. Graduate Program on Global Society (GSP)
6. Graduate Program on Environmental Sciences (GPES)

Graduate School of Science

7. Master's/Ph.D. Program at Frontier Science Research Center
8. Graduate Program for International Students

Graduate School of Engineering

9. International Graduate Program in the Field of Civil Engineering and Infrastructure Studies
10. International Graduate Program in Mechanical, Electrical and Materials Engineering
11. Graduate Program for Foreign Students in Urban and Environmental Studies
12. Special Graduate Program in Resilience Engineering
13. Special Graduate Program in Engineering for Systems Innovation
14. Special Graduate Program in Nuclear Engineering
15. Specially-promoted Graduate Program for Creation of the Asian Engineering Framework Based on Tripolar Alliance among Japan, China and Korea
16. International Bioengineering Program
17. Architecture and Urban Design Program
18. International Technology Management Program

Graduate School of Agricultural and Life Sciences

19. International Program in Agricultural Development Studies (IPADS)

Graduate School of Medicine

20. Global Health Sciences: Program in International Health

Graduate School of Frontier Sciences

21. Environmental Studies Program - Asian Development Bank Japan Scholarship Program
22. Graduate Program in Sustainability Science - Global Leadership Initiative (GPSS-GLI)

Graduate School of Information Science and Technology

23. The English Program in Information Science and Technology

Graduate School of Interdisciplinary Information Studies

24. International Master's/Doctoral Degree Program: Information, Technology, and Society in Asia (ITASIA)

Graduate School of Public Policy

25. Master of Public Policy, International Program (MPP/IP)
26. Master of Public Policy, Campus Asia Program (MPP/CAP)

College of Arts and Sciences



Degrees Offered in English

Launched in October 2012, the University of Tokyo offers two undergraduate degrees with English as the medium of instruction as PEAK programs. Students are able to select from the International Program on Japan in East Asia or the International Program on Environmental Sciences.

All courses are taught in English

Experience in Japanese language is not necessary

Japanese language is taught as an integral part of the curriculum

Application Process

Applicants can select only one of the two programs.

First Screening (Dec. to Jan.)

The first stage of the application process will be a document screening in which the applicant's academic qualifications, letters of evaluation, English proficiency and personal essay will be reviewed.

Second Screening (Feb. to March)

Applicants who pass the first stage will be invited for a personal interview that (in principle) will be held in their country of residence.

Decision (April)

Successful applicants will be offered places based on the results of the document and interview screenings.

Allocation of scholarships will be undertaken during the screening process and scholarship offers will be made alongside places on the programs.

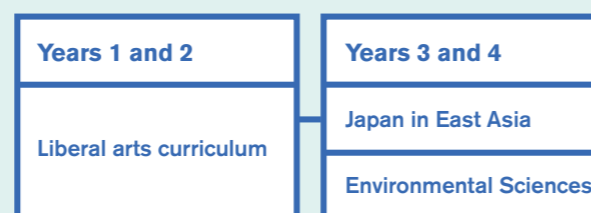
Details of the application process and how to obtain the forms required are given on the PEAK website.

<http://peak.c.u-tokyo.ac.jp>

Course Structure

A key feature of the undergraduate education system at the University of Tokyo is that students spend their first two years attending a wide range of liberal arts courses. This provides the students with a broad knowledge-base on which to develop their later studies.

After the first two years, students take specialized courses as part of the specific curriculum they have selected – i.e. The International Program on Japan in East Asia or The International Program on Environmental Sciences.



Scholarships

Merit-based scholarships are available.

The University of Tokyo Scholarship

Up to ten students may be offered a four-year scholarship; this will cover the enrollment fee, tuition and living expenses (JPY 126,000 a month) for four consecutive years.

Accommodation

All PEAK students are entitled to live in "Komaba International Lodge" at least for the first 2 years. This is a self-catered dormitory which is about a 5-minute walk from Komaba Campus. Each student will have her/his own room with shared kitchen and bathroom facilities. The monthly rent is about JPY 35,000.

Contact

3-8-1 Komaba, Meguro-ku, Tokyo, 153-8902 JAPAN
Undergraduate Admissions Office:
+81-3-5454-6191, int.admissions@ml.adm.u-tokyo.ac.jp
<http://peak.c.u-tokyo.ac.jp>

1. PEAK-International Program on Japan in East Asia

Program overview

The Japan in East Asia Senior Division Program aims to provide students with a wide range of social science and humanities courses to develop an advanced understanding of Japanese/East Asian politics, economy, society and culture in the global context. The program is organized so that students will be able to receive a bachelor's degree by taking classes instructed in the English language alone. The curriculum reflects sixty years of experience and continuous improvement and innovation in liberal arts education in the College of Arts and Sciences.

Key features of the program

The program offers wide-ranging subjects such as: modern history of East Asian international relations, the transformation of Japanese society, and modern Japanese literature in global context.

The teaching of the program is organized based on the following three key approaches:

1. Interdisciplinary Cultural Studies Approach
2. Area Studies Approach
3. Social Sciences Approach

The Interdisciplinary Cultural Studies Approach emphasizes the study of cultures from a comparative and diversified perspective. While the focus will be on Japanese culture, Japan is not considered to be a secluded community, but rather a window for looking through at cultures of the increasing globalized world.

The Area Studies Approach delivers cross-cutting themes to help students gain a broad-ranging, cosmopolitan knowledge of Japan in the context of East Asia.

The Social Sciences Approach mobilizes up-to-date theoretical and empirical discussions from different fields of social science research, such as politics, international relations, economics, sociology and law, to examine historical and current issues in Japan and East Asia.

Students are encouraged to investigate various issues in Japan and East Asia through these approaches. All students are required to complete a Graduation Thesis as an independent researched piece of work in their final year.

The graduates of this program will be well equipped to pursue careers in various fields including international organizations, government, multinational corporations, and journalism. They may also pursue further study in the graduate programs offered at the Graduate School of Arts and Sciences of the University of Tokyo.

Prospective students

Applicants to the Japan in East Asia program are expected to have a wide range of educational backgrounds. Successful candidates will be required to engage in in-depth and critical academic investigations of humanities and social science subjects to complete the PEAK degree program. Although we do not require the applicants to have specific subject qualifications, candidates should demonstrate a high level of literacy, numeracy and critical thinking in their past academic records across traditional subjects such as English, Mathematics, and History (this list is not exclusive), while showing a strong intellectual appetite for understanding historical and current affairs in Japan in the context of East Asia.

2. PEAK-International Program on Environmental Sciences

Program overview

The International Program on Environmental Sciences is aimed at fostering an in-depth understanding of the global environmental problems and at producing graduates who will contribute to the promotion of a sustainable society. The program makes use of lessons from Japan's past experience of environmental problems and the recent advances in analytical methods and technologies for environmental and social sustainability.

Key features of the program

Students taking the program will be taught a wide spectrum of subjects in the natural and social sciences such as: climatic change and global geochemical material

cycles; biodiversity in ecosystems; data analysis methods including statistics and computer simulation; environmental economics; international politics as well as other social sciences relating to human security and sustainable society.

Graduates of this program may continue onto the Graduate Program on Environmental Sciences of the Graduate School of Arts and Sciences or pursue various other careers. They are expected to contribute to the promotion of environmental policies relating to sustainable society in their home countries and in the wider international community.

Faculty of Science

3. GSC (Global Science Course)



Global Science Course (GSC) is a new undergraduate program in the School of Science with the aim of creating a global hub of education in the fundamental sciences to groom young talents world-wide. From October 2014, the Department of Chemistry will start accepting selected international students from abroad into the third year of undergraduate studies.

The program delivered totally in English is designed to offer interdisciplinary and transdisciplinary subjects in addition to the fundamental subjects so that students can acquire a wide perspective to explore new frontiers in fundamental sciences.

At the end of the program, students will be awarded with a degree in Bachelor of Science if they fulfill all graduation requirements. We welcome applicants from all around the world that exhibit outstanding academic ability, internationalism and diversity.

Transfer admission into third year

Full scholarship and housing support

Completely delivered in English

Japanese language proficiency not required

Strong academic support

Admissions

October and April (twice in a year)

Number of Admissions

Up to 5 students each year

Who are we looking for?

- Completion of first two years of undergraduate studies
- Attended an university or college outside of Japan
- Gained a minimum of 62 credits before enrollment
- English language proficiency
- Basic undergraduate Science knowledge
- Outstanding academic background
- Strong passion in Science
- Potential for intellectual growth & leadership

Applying to GSC

The GSC online application system allows applicants to easily fill out the application form, pay for the application fee and submit required documents.

- Personal Statement
- TOEFL/IELTS Score Report
- Two Evaluation Forms
- University/College Transcript
- High School Transcript
- Certificate of Student Enrollment

Financial Aids

All GSC transfer students are eligible for the following financial aids.

Scholarship of JPY 150,000 per month for up to two years to aid in paying for admission fee, tuition fees and support living expenses

UTokyo International Lodge or private housing arranged by the School of Science with monthly rent fully funded

Contact

GSC Administration Office
School of Science
7-3-1 Hongo, Bunkyo-ku, Tokyo
113-0033 JAPAN
gsoffice@adm.s.u-tokyo.ac.jp
<http://www.s.u-tokyo.ac.jp/GSC/>

Graduate Degrees Offered in English

Graduate School of Economics

<http://www.gaia.e.u-tokyo.ac.jp/utipe/>

4. International Program in Economics

Program overview

International Program in Economics (UTIPE) began with a two-year Master's Program in 2010 for English-speaking students. The program has two objectives: 1) to nurture students as scholars and educators with international perspectives based on advanced analytical skills in modern economics; 2) to provide students with a practical, globally-engaged education emphasizing specialized knowledge and expertise in economics. Master's students take required courses in macroeconomics, microeconomics, and econometrics. Thus, students with both English proficiency and an advanced knowledge in mathematics and/or economics are particularly welcome. The doctorate program is also open to those who have completed the Master's Program with distinction. More details are available on the website.

Key features of the program

This program is intended for international students who have completed or are expected to graduate from universities outside Japan (see the website). The courses are all taught in English,

and therefore proficiency in Japanese is not required. Up to 10 students are admitted each year and they may enroll either in April or October.

Core courses for the Master's program:

- Microeconomics: to learn the very basic analytical tools in economics in order to read / write research papers.
- Macroeconomics: to gain the tools of modern dynamic macroeconomics in order to solve problems facing society today.
- Econometrics: to acquire the basic knowledge in econometric theory and applications in order to understand published papers and apply the method to their own research.

Prospective students

This program is best suited for those who wish to conduct research by using the methodologies of Macroeconomics, Microeconomics, and/or Econometrics. The students will be expected to communicate Japanese perspectives to international audiences without being limited to the Western way of thinking.

Graduate School of Arts and Sciences

<http://gsp.c.u-tokyo.ac.jp/>

5. Graduate Program on Global Society (GSP)

Program overview

The Graduate Program on Global Society (GSP) focuses on the theme of human existence in the age of globalization and seeks to provide agenda-shaping and problem-solving leadership for a multipolar world.

New trends in technology and globalization require us to assume fresh perspectives and to reconsider the political, social, ecological, cultural and ethical dimensions of the human condition. GSP offers innovative, highly relevant and in-depth approaches to the challenges and possibilities of globalized civil society. It enables the development of innovative forms of governance and law to address unprecedented global challenges.

Key features of the program

In responding to today's global challenges, GSP has established a cohesive and cutting-edge program based on critical thinking, creative spirit and practical activities for students in the humanities and social sciences. Furthermore, the program focuses on modern

Japanese and Asian societies and their unique experiences of Western modernity. The program places these experiences into a wider comparative and contextual framework to shed light on the diversity and interdependency of global society.

The working language of this program is English, but the language and style of instruction may vary according to individual courses and interests. Student groups and university-organized extracurricular activities, such as internships and externships, may be coordinated with the program to encourage increased social, cultural and scholarly exchange. GSP students also have access to courses in the regular curriculum of the University's graduate schools and programs, contingent upon language competency.

Prospective students

Students who have basic training in the humanities and social sciences and possess a keen interest in addressing global issues from a wider perspective.

Graduate School of Arts and Sciences

<http://gpes.c.u-tokyo.ac.jp/>

6. Graduate Program on Environmental Sciences (GPES)

Program overview

GPES is an exciting new advanced-level degree program. It shares its vision with its undergraduate counterpart, the International Program on Environmental Sciences, one of the PEAK (Programs in English at Komaba) programs and is likewise delivered entirely in English. Students taking the undergraduate program develop a unique set of skills, allowing them to analyze, critique, propose and define environmental policy from economic, cultural and political viewpoints, based on a platform of basic science and technology, which covers aspects from basic physics and chemistry through to environmental processes such as ecological systems and methods for measuring global material circulation. The graduate program steps further and deeper, allowing students to choose their area of specialization from a wide range of relevant fields including natural and agricultural sciences, industrial technologies, and social sciences including economics, politics and other related disciplines. The course provides a unique opportunity to

work with world experts at the cutting edge on problems that global society needs to address right now for its future prosperity.

Key features of the program

Classes and research opportunities are given by professors from various departments across the University in wide area of disciplines.

Prospective students

Students who are capable of working internationally in the environment-energy field on the global stage with a systematic understanding of the environment-energy field from both natural and social scientific perspectives;

who understand and can make judgments on environmental questions on all scales ranging from local to global with a considered and empathetic view of the wide range of different stakeholder viewpoints on environmental issues; and

who can make informed decisions in real time, on site to solve real world problems, and so on.

7. Master's/Ph.D. Program at Frontier Science Research Center

Program overview

This program aims to recruit international students with great potential, to train and educate them at world-class scientific research institutes, create worldwide networks of interpersonal connections, and ultimately increase the numbers of prospective international students. Participants will benefit from a wide variety of learning opportunities available at the cutting-edge educational and research institutions of the Graduate School of Science. The core courses are held at the Hongo Campus, while the joint, collaborative, and interdisciplinary courses are offered at the Kashiwa and Komaba Campuses, as well as at the affiliated research institutes and organizations located throughout the Kanto area.

Key features of the program

The School is implementing multi-tiered measures to enhance the international and intercultural competence of the attending students. As a rule the lectures are given in English if requested by one or more students, while all classes of the Chemistry Graduate Program

are taught in English. Small-group one-year English lessons by professional English teachers, open-door presentations of Master's theses and doctorate dissertations, and lab-based seminars conducted in English are also offered.

Prospective students

The School has established a fair and unbiased selection procedure for international students that is applied to this program. Applicants are required to submit the following documentation: official GRE and TOEFL test results, a letter of recommendation, official undergraduate/graduate transcripts, and an essay describing their graduate-research theme. The program has multifaceted goals, and aims both to support developing countries and to provide advanced academic training. Consequently, this program will accommodate a wide variety of overseas students.

8. Graduate Program for International Students

Program overview

The School of Science strives for academic excellence through its ever-increasing diversity. Our commitment to diversity is stronger than ever. At present, the School offers Master's and doctorate programs in five departments: Physics, Astronomy, Earth and Planetary Science, Chemistry, and Biological Sciences. These programs are run in close cooperation with other research institutes within the University and with some external institutions. The School has a world-class faculty of more than 260 full-time professors, associate professors, and research associates, and a diverse student body of more than 1,350 graduate students. The School has widely opened its doors to students and researchers from around the world with the aim of establishing world-leading academic standards.

Key features of the program

The School offers a variety of internationalization programs designed

to promote exchange of views between Japanese students and researchers and their international counterparts about both their own research and recent scientific developments in general. These programs will help the School to foster wider perspectives and help our students acquire the skills they need to become leaders amongst the next generation of researchers.

Prospective students

The Graduate School of Science offers advanced graduate study in a wide range of scientific fields to international students. The School has already established a system to provide international students with full support in English. We have established a special admissions procedure for international students. Some programs are already conducted entirely in English by the Departments of Physics and Chemistry. It is expected that additional programs will be given in English in the near future.

9. International Graduate Program in the Field of Civil Engineering and Infrastructure Studies

Program overview

The goal of this program is to prepare its graduating students to become future international leaders in the fields of infrastructure technology design, plan, disaster mitigation, and environmental management. Involvement in key projects in various academic fields and industries provides students with crucial experience and skills needed for developing and integrating the competencies necessary for participation on an international level in our expanding world. Since 1982, the Department of Civil Engineering has been offering this program and more than 730 international students from around 60 different countries have graduated.

Key features of the program

In this program, lectures and research supervisions are given in English. All students are entitled to receive a full scholarship and enroll as full-time graduate students upon their arrival in Japan.

The Department has set up effective support systems provided by the Foreign Student Office in English. The Department also provides Japanese language classes, technical English language classes and a "Civil Host Family Program" for assisting the students in adjusting to social life inside and outside of the University.

Prospective students

To be placed on the list for selection, applicants have to be among the top group in academic attainment at the few most accredited institutions in each country. Since the academic level of the program is high and the number of international students that can be accommodated is limited, only the most academically qualified applicants will be admitted. While applicants with English language fluency are preferable, the academic strength is evaluated more highly than the language skill.

10. International Graduate Program in Mechanical, Electrical and Materials Engineering

Program overview

This program is designed for professional education and research in the field of basic technology and specifically at the nexus of mechanical, electrical and materials engineering. To meet the evolving challenges it presents, this program has expanded and refocused its curriculum. This program recruits international students of the highest calibre who are destined to become leading scientists and engineers in the interdisciplinary fields of mechanical, electrical and materials engineering after graduation. It is hoped that the advanced education provided will help students win prominent positions in their home countries or contribute to the progress of science and technology in Japan.

Key features of the program

The most distinctive feature of this program is the tight cooperation among the five departments in the fields of mechanical,

electrical and materials engineering, and the fact that the courses are taught entirely in English by a staff of internationally recognized scientists. The program supports domestic and international students in many ways, nurturing and guiding them through the program's rigors.

Prospective students

This program is composed of Master's and doctorate courses, and accepts international students with scholarships as well as self-financed students. Candidates for admission are independently assessed by each department. The suitability of an applicant student is based on the (GPA-standard) records in their undergraduate or graduate academic history. Recommendation by the department head of their alma mater and approval by their host professor are required to qualify, eliminating the need for most candidates to visit Japan to take examinations.

11. Graduate Program for Foreign Students in Urban and Environmental Studies

Program overview

This program provides cutting-edge knowledge on spatial planning, design and analysis as well as urban environmental management and technology to be used to solve ever-increasing urban issues and problems in the world. Both research and teaching within the Department of Urban Engineering focus on two primary areas: environmental engineering and urban planning.

- Environmental Engineering Course

As the number of mega-cities around the world increases, it has become urgent to find solutions to various urban environmental problems. As solutions to these problems are not only found at the urban level, research in environmental engineering cannot be limited to just the urban scale. We also undertake regional and global studies on such pressing issues as climate change.

- Urban Engineering Course

In order to prepare students for these tasks, the department's study programs cover a wide range of study and research areas

related to spatial planning in both developed and developing countries. Students are also expected to gain technical training in the use of Geographic Information Systems (GIS) and/or Internet technologies.

Key features of the program

Our unique characteristics lie in the parallel development of academic research and practical application, thus, we place emphasis on studio work in our educational systems, where students can obtain new ideas and experiences through the intensive discussion with faculty members and other students who come from a wide variety of backgrounds.

Prospective students

Only applicants holding, or soon to be awarded (before the entrance to the Graduate School of Engineering) a bachelor degree/ Master's degree from an accredited university are eligible for Master's degree/doctorate degree programs respectively.

12. Special Graduate Program in Resilience Engineering

Program overview

This program aims at educating talents who have acquired expertise on resilience engineering as well as comprehensive views to make a career in various domains. Resilience engineering requires transdisciplinary views and specialties. The Department of Systems Innovation, Department of Nuclear Engineering and Management, Department of Technology Management for Innovation and other related departments collaboratively provide the lectures for educating those who are familiar with resilience engineering so that they are welcomed from society for the ability to resolve realistic issues in complex society.

Key features of the program

Lectures and research instructions in the three departments are generally given in English while Japanese language courses are optionally available. The educational curriculum covers traditional engineering subjects, fundamentals of interfacing areas among

engineering and social, human, economy, management sciences, as well as domain-specific subjects so that students can acquire comprehensive and interdisciplinary viewpoints.

Prospective students

The Department of Systems Innovation, Department of Nuclear Engineering and Management offer Master's and doctorate courses under this program. The Department of Technology Management for Innovation offers a Master's course under this program. An applicant who is eligible for admission to the Master's course must hold or be about to receive their bachelor degree from an accredited institution in a country outside of Japan.

Likewise, applicants to the doctorate course must hold or be about to receive their Master's degree or its equivalent in a country outside of Japan before they enter the Graduate School of Engineering.

13. Special Graduate Program in Engineering for Systems Innovation

Program overview

The Department of Systems Innovation, the Department of Nuclear Engineering and Management, and the Department of Precision Engineering in the Graduate School of Engineering offer advanced study and research opportunities to international students under the Special Graduate Program in Engineering for Systems Innovation. The program offers Master's (two years) and doctorate (three years) programs that lead to corresponding degrees in each of the three departments.

Key features of the program

Lectures and research instructions in the three departments are generally given in English while Japanese language courses are optionally available. The educational curriculum covers traditional engineering subjects, fundamentals of interfacing areas among engineering and social, human, economy, management sciences,

as well as domain-specific subjects so that students can acquire comprehensive and interdisciplinary viewpoints. In addition to lectures, opportunities for practical exercises and internships in Japanese corporations and other institutes will be provided. Graduates of this program currently hold leading positions in government offices, corporations, universities, and other institutions worldwide.

Prospective students

The applicants are selected primarily based on academic qualifications according to their submitted application documents. An applicant who is eligible for admission to the Master's program must hold or have received a bachelor degree from an accredited institution in a foreign country, and one to the doctorate course must hold or have received a Master's degree or its equivalent in a foreign country before being admitted to the Graduate School of Engineering.

14. Special Graduate Program in Nuclear Engineering

Program overview

The aims of this program are to foster internationally-minded individuals who have a rounded knowledge of nuclear sociology as well as the communication skills necessary to allow them to develop the frontiers of the professional fields including advanced nuclear systems and radiation applications.

Graduates of this program are expected to include university, research institute and industry researchers, technical managers for policy-making, technical experts at international organizations, consultants and analysts.

Key features of the program

The Department of Nuclear Engineering and Management and the Nuclear Professional School offer a high-level education on the frontiers of each of the areas of study covered in the program. A substantial number of English-taught lectures, especially those for the core curriculum, are offered for international

students to earn the credits required for the diploma. Practical education through internships is also encouraged as a means to enhance the education provided at the University. Each international and Japanese student belongs to a research group and, under the guidance of their supervisor(s), is expected to engage in cutting-edge research as part of their Master's or doctorate theses.

Prospective students

Applicants are selected primarily based on academic qualification submitted in their application documents. An applicant who is eligible for admission to the Master's course must hold or be about to receive their bachelor degree from an accredited institution in a country outside of Japan. Likewise, applicants to the doctorate course must hold or be about to receive their Master's degree or its equivalent in a country outside of Japan before they may enter into the Graduate School of Engineering.

15. Specially-promoted Graduate Program for Creation of the Asian Engineering Framework Based on Tripolar Alliance among Japan, China and Korea

Program overview

Built upon a framework of connections among Japanese, Korean and Chinese engineering educational institutions, this program aims to nurture internationalized human resources capable of supporting the sustainable development of Asia. Candidates selected for this program are first nominated by Seoul National University (SNU) in Seoul, Korea and Tsinghua University in Beijing, China, which are research and educational institutions of the highest level in each country. The Graduate School of Engineering then makes the final determination as to which individuals are able to enter into the doctoral program. By holding academic symposiums together, we strive to deepen the relationships among students, faculty members, departments, and ultimately build developing and supportive relationships.

Key features of the program

The program is a graduate school-wide project for the education of international students administered at the Graduate School of Engineering under the leadership of the Department of Bioengineering. Along with promoting the flexible transfer of academic skills and staff across existing departments, this program aims to create new academic expertise that is able to broadly cut across existing disciplines. As a vanguard in the development of the Engineering Framework, this program accepts international students working in the fields of bioengineering and many other fields not explicitly covered by the program.

Prospective students

The applicants are to be shortlisted either by SNU or Tsinghua University. Each applicant's area of study must be within a field accepted by one of the faculty members of the Graduate School of Engineering.

16. International Bioengineering Program

Program overview

International Bioengineering Program (IBP) accepts ten promising international students every year and provides them with two years of high-level Master's degree education in bioengineering taught in English. This program is an activity included among the international extensions of the Department of Bioengineering, and is designed to bridge the gap between biological sciences and their applications in their real world, such as healthcare, medicine, welfare and drug discovery, issues in environment energy and food, safety and security, and information and communication technologies.

Key features of the program

The education and research areas of the Department of Bioengineering are divided into six fields: mechanobio-engineering, bioelectronics, biodevices, chemical bioengineering, biomaterials and bioimaging. In the IBP, lectures concerning general bioengineering-related concepts and specific topics in each of the six fields of

research will be conducted, as well as more intimate discussion-based seminars both in basic bioscience and bioindustry. We strive to include the latest research achievements from each of the six fields into our lecture content.

In addition to these classes, students must conduct a Master's thesis research in each laboratory. Through a specialized education and research curriculum, the IBP is able to foster exceptional students with good English communication skills in science and engineering, and who have both a wide vision and specific expertise in at least one of the six areas, so that they are able to take on active roles in the research and development of rapidly advancing bioengineering-related fields after graduating.

Prospective students

IBP seeks to recruit qualified individuals from around the globe, regardless of nationality, and provide them with advanced education in the fields of life science and biotechnology.

17. Architecture and Urban Design Program

Program overview

The Global 30 Architecture and Urban Design Program (G30UDA) at the University of Tokyo is dedicated to interdisciplinary design research that connects architecture, engineering and computation to explore emerging discourses on architecture and urbanism. It seeks to develop and speculate new knowledge for architecture where the practice of design engages in both social constructs and material performances. It aims to explore the potential of architecture as the essential element to generate new ideas of and for the ever-evolving built-up environment.

Key features of the program

G30UDA at the Department of Architecture is a postgraduate program taught in English that was established as an experimental laboratory to explore contemporary research on architecture. The ambitions of the program are to provide a platform for collaboration between various research laboratories within the Department of Ar-

chitecture and also within the Graduate School of Engineering, linking design practices with scientific research projects. The program focuses on the development of comprehensive design proposals exploring the interconnectivity of building systems including issues of structure, materials, environment, spatial logic, and socio-cultural parameters. It systematically examines and speculates on the rapidly emerging and evolving contemporary built environment and its design challenges through both theoretical and specific architectural design investigation leading to a rigorous Design Thesis Project.

Prospective students

Entry into the G30UDA is open to talented international graduate students with a minimum of 16 years of education at academic institutions. Previous education in architecture is not required, but it is strongly preferred.

18. International Technology Management Program

Program overview

The G30 Master's program in International Technology Management is a two-year postgraduate degree aimed at nurturing the next generation of technology managers through rigorous training and education in the theories and practice of innovation management. The program is for talented students from around the world who wish to take courses in English that are delivered both by faculty and visiting lecturers from industry and government and that closely link academic theory with business practice and experience. The program offers students the opportunity to study and learn from top scholars and most cutting-edge companies in one of the world's most technologically advanced nations.

Key features of the program

The courses in this program center around three main areas: Technology Management/Management Science/Intellectual Property.

Students are expected to select from a broad range of courses within each of these areas, including business mathematics, corporate strategy, econometrics, entrepreneurship, global business, intellectual property management, and others. The classes are taught in English with some also taught in Japanese. Supplementary Japanese courses are also provided if necessary. In addition to project-based training and group work, students will also be expected to write a thesis on a topic of their own choosing. Students will also have the opportunity to take an internship at a company.

Prospective students

This program welcomes students who are willing to learn about technology and management from a different perspective. Students are encouraged to aspire to become central figures in industry and governments in the drive for innovation.

19. International Program in Agricultural Development Studies (IPADS)

Program overview

International Program in Agricultural Development Studies (IPADS) is the School's premier English-language program at Master's and Ph.D. levels. Issue-oriented rather than methodology-oriented, these exciting programs offer the opportunity to develop the requisite expertise across discipline and country boundaries to tackle agricultural and environmental problems in developing countries around the world.

Key features of the program

IPADS-MSc is a two-year coursework and research program towards the University of Tokyo's MSc degree. To graduate, students must satisfactorily gain credit points from a truly multidisciplinary set of subjects: plant science, animal science, forestry, fisheries and social sciences. Typically, students complete the coursework component in their first year whilst designing and preparing for their original research and then engage in full-time research in

their second year. Throughout the program, students are actively involved in the School's research community, participating in weekly seminars, thematic workshops and academic conferences. IPADS-PhD is the full research program typically for three years. Students complete the research component under the supervision of the School's faculty to satisfy their own requirements and research interests.

Prospective students

We are committed to serving the global society through our programs dedicated to sustainable provision of food and ecosystem services. As one of Asia's leading agricultural schools, we take pride in the quality of our experienced and internationally recognized staff, who engage in innovative teaching as well as groundbreaking research. To further explore, visit our website above, and find out all you need to know about applying to IPADS!

20. Global Health Sciences: Program in International Health

Program overview

In order to cope with health problems worldwide, particularly in developing countries, it is necessary to understand the variety of local, regional and global problems while seeking scientifically reliable and socioeconomically feasible ways to solve or mitigate them through research and education. The core function of the School of International Health is to prepare future leaders to do this and many of our graduate students have gone on to serve in both domestic and international organizations and academic institutions.

Key features of the program

The curriculum of the Master's program includes a wide variety of classes from both the natural and social sciences. The first year of the program provides an intensive series of lectures where discussion and class participation are emphasized. In some lectures, guest speakers are invited to discuss pressing issues in their particular fields. In conjunction with these classes, students will

undertake their own research for their Master's theses.

In the doctorate program, research is emphasized and students will spend most of their time on their own research work to deepen their expertise. Achieving a high level of competence in terms of being able to undertake top-class research or as regards being able to work in leading international health and medical organizations is the ultimate goal of the doctoral program.

In collaboration with the Graduate School of Engineering, we are running an international consortium, "Urban Environment and Health in Asia", which supports exchange of graduate students between partner universities in ASEAN countries and UTokyo.

Prospective students

Global Health Sciences is where natural and social sciences, basic knowledge and real world practices converge. To be truly active in this field you will need to be, and indeed will become, a highly trained professional. We are receiving students with various backgrounds from all parts of the world.

21. Environmental Studies Program – Asian Development Bank Japan Scholarship Program

Program overview

The Division of Environmental Studies (DES) consists of six departments: Natural Environmental Studies; Ocean Technology, Policy, and Environment; Environment Systems; Human and Engineered Environmental Studies; Socio-Cultural Environmental Studies; and International Studies. The Graduate Program in Sustainability Science - Global Leadership Initiative (GPSS-GLI) is an interdepartmental program supported by all six departments in the division.

Degrees conferred by DES

Master of Environmental Studies (All departments except for International Studies)

Master of International Studies (Department of International Studies)
Master of Sustainability Science (Graduate Program in Sustainability Science)
Doctor of Philosophy

Student specializations

DES mainly accepts students with a background in the natural sciences. The Department of International Studies and GPSS-GLI, though, also accept students with a background in the social sciences or humanities.

Asian Development Bank-Japan Scholarship (ADB-JSP)

Since 2000, DES has been appointed as an ADB-designated educational institution. ADB-JSP provides scholarship opportunities that cover tuition, enrollment fees, round-trip airfare, and a monthly stipend for qualified citizens from ADB developing member countries. The duration of scholarship is two years maximum.

Methods of Selection

DES has adopted a screening method of written application. Applications are due in December for enrollment in October of the following year. Please visit our website above.

22. Graduate Program in Sustainability Science – Global Leadership Initiative (GPSS-GLI)

Sustainability is an indispensable keyword for the future of humankind. No matter who you are, where you live, and what you do, you must always keep "sustainability" in your mind if you truly want to make a positive contribution to our common future. Fortunately, to meet such a concern, a number of academic programs named after "sustainability" have been established in various universities around the world.

The Graduate Program in Sustainability Science - Global Leadership Initiative (GPSS-GLI) is proud to be one of the leading programs in sustainability science in the world today. However, you may ask yourself, why study sustainability in Japan? What is the uniqueness of the program?

Japan has been accommodating over 120 million people on a very limited habitable land area with virtually no natural resources, yet with frequent natural disasters caused by earthquakes, tsunamis, and typhoons. We Japanese, therefore, have had to carefully examine not only the property and designs of our society, but our ethics, lifestyle,

and behavior within the parameters of our limited resources and the frequency of natural disasters. "Mottainai", a Japanese expression meaning to minimize wasteful habits, clearly represents such culture that the Japanese have developed. Although Japanese society seems to have regrettably forgotten such a common attribute of our society and have lightheartedly enjoyed consuming energy and materials during the post-war era, the contemporary concern for sustainability has rung the bell to revive the underlying virtues of the Japanese people. Studying sustainability in Japan includes not only attending classes and seminars on campus, but experiencing such a society based on the idea of "mottainai", a model that the world should consider as one of the models for our common sustainable future.

We hope to have students who respect this concept, and thus wish to learn such common culture that the Japanese have been nurturing for so many years.

23. The English Program in Information Science and Technology

Program overview

This program, started in October 2010 to answer the needs of the international age, is a part of the regular study program of the Graduate School. This program is mainly for foreign applicants whose English ability is sufficiently good, but applicants' nationality and past experience with English education do not matter in regard to enrollment decisions.

Key features of the program

Those in the program are guaranteed to graduate with an English language degree; i.e., students will attend lectures in English, take examinations in English, write reports or give presentations in English, be supervised in English, and finally write a thesis all in English. The English Program offers lectures to fulfill the requirements for graduation from each department. Although the graduate school offers a variety of lectures in English, those who are enrolled in the English Program are permitted to attend lectures in

Japanese and obtain credits.

Prospective students

To register for this program, first, you must apply for the entrance examination for the regular Master's or doctorate program in the Graduate School of Information Science and Technology. Passing this entrance examination is a requirement for applying to the program. Students of this English Program belong to one of the six departments of the Graduate School of Information Science and Technology. Upon graduating, those enrolled in the program will receive a degree certified by the department they belong to, and equivalent to the other students in that department.

24. International Master's/Doctoral Degree Program: Information, Technology, and Society in Asia (ITASIA)

Program overview

In 2008, the University of Tokyo launched a new International Master's/Doctoral Degree Program: Information, Technology, and Society in Asia (ITASIA) at the Graduate School of Interdisciplinary Information Studies (GSII). This program offers intensive graduate-level education designed to foster analytical strength and insight into Asian societies and international relations, at a time when information and communication technology is having an increasingly profound impact on the region.

Key features of the program

Students in the M.A.S. program are trained to grasp changing political, economic, and social realities of globalizing Asia through study of media, communication, and information studies together with the related methodology and skills. After graduation, students will be able to rely on this foundation to make judgments and recommendations in their respective professional environments. The M.A.S. program is appropriate for those interested in pursuing

careers in public administration, media, business, and academic institutions. The Ph.D. program is intended to produce high-level researchers and professionals in the fields of Asian studies and information studies. Students will acquire a broad-based knowledge of arts and sciences as well as expertise in the investigative techniques and theoretical analysis required for advanced research in politics, economics, media studies, and other social sciences.

Prospective students

1. Students looking for a graduate education program in Japan that is conducted entirely in English
2. Students interested in acquiring a broad interdisciplinary perspective on Asian societies and cultures through the study of media, technology, and international relations
3. Students aiming for a career in public administration, journalism, media or business; or aiming to become researchers and academic professionals

25. Master of Public Policy, International Program (MPP/IP)

Program overview

This program aims to nurture an environment in which top-level Japanese and foreign students combine their talents and cooperatively learn all the salient elements necessary to become leaders in their respective countries. The MPP/IP allows superior foreign students who are not proficient in the Japanese language to study at GraSPP. We are striving to fuse the uniqueness of Japan with a curriculum that is acceptable internationally, and to ensure compatibility with the leading global universities with which we have academic exchange agreements.

Key features of the program

For Future World Leaders in the Field of Public Policy

The four key features of MPP/IP are: (1) education in English; (2) an internationally-compatible curriculum that focuses on issues concerning the Asian region, and is especially integrated and compatible with our exchange school network; (3) an expanding international reach through exchange programs that will include double degree programs with leading public policy schools in the U.S.,

Europe and Asia; and (4) scholarships from international financial institutions such as the World Bank, the Asian Development Bank and International Monetary Fund to attract young professionals from Asia and the rest of the world.

Prospective students

The MPP/IP seeks to attract individuals who:

- aspire to obtain a graduate-level knowledge base that combines high levels of specialized knowledge with practical competencies, who intend to go on to serve as highly-principled public policy professionals and leaders in international society;
- can effectively evaluate challenges confronting modern society, devise optimized policy responses, evaluate policy impacts, and build consensus by proficiently managing stakeholder communications;
- have the competency necessary to apply fundamental knowledge in policy design, implementation and evaluation honed through a balanced study of law, politics and economics.

26. Master of Public Policy, Campus Asia Program (MPP/CAP)

Program overview

To foster global human resources and nurture in Asia a generation of future world leaders through dynamic cross-border educational cooperation, top ranking universities in three countries, Japan, China and South Korea, have united to promote a reciprocal three-way exchange of students and faculty, to create a consortium that would allow mutual study exchange between GraSPP, the School of International Studies at Peking University (SIS) and the Graduate School of International Studies at Seoul National University (GSIS), each providing specialized subjects taught in English to each other at advanced graduate level.

Key features of the program

Unprecedented Three-Way Double Degree Program in Asia

A graduate school exchange program has been established in three directions simultaneously, enabling participating students to graduate after study at three top-class Asian universities with classes conducted entirely in English.

CAMPUS Asia Options: "Foreign Exchange" or "Double Degree"

The CAMPUS Asia program provided by the School of Public Policy at the University of Tokyo allows candidate students to study in three countries and obtain at least one accredited degree. Students may choose either a "foreign exchange" or a "double degree" option.

Prospective students

- Policy makers equipped to show leadership and who can recognize, unlock, and resolve the emerging challenges we now face with accelerating globalization
- Individuals in leadership roles on the global stage who can display exceptional communication skills in English as a tool of international communication
- Individuals who can promote cooperation in politics, economics, culture and human exchange between Japan, China and South Korea, men and women with multicultural perspectives who can play active roles internationally as Asian leadership pioneers in the fields of public policy and international relations



Short-term Programs

University-wide Student Exchange Program (USTEP)

AIKOM (Abroad in Komaba)

International Alliance of Research Universities Global Summer Program (IARU-GSP)

Global Japan Studies

International Core Research Center for NanoBio (C2CNB) Summer Internship Program

University of Tokyo Research Internship Program (UTRIP)

The University of Tokyo Summer Internship Program in Kashiwa (UTSIP Kashiwa)

UTokyo Innovation Summer Program (TISP)

University-wide Student Exchange Program (USTEP)

UTokyo accepts exchange students from partner universities with which the University has entered into a Memorandum of Understanding concerning student exchange. Exchange students can choose between the TYPE 1 or TYPE 2 program depending on their purpose of participation and/or their proficiency in the Japanese language. The TYPE 1 program allows exchange students to take the regular courses where the lectures are predominantly in Japanese. For students to participate in the TYPE 1 program, an adequate level of proficiency in Japanese is required. Graduate level exchange students will be able to conduct research under the guidance of faculty members in the University's Graduate Schools. The TYPE 2 program offers opportunity for overseas undergraduate students to take various courses given in English in the various Faculties without having to attain a high level of proficiency in the Japanese language. Please note that an adequate level of proficiency in English is required to participate in TYPE 2 program.

<http://www.u-tokyo.ac.jp/en/admissions-and-programs/exchange-program/index.html>

Feature Article on pages 11 and 12

AIKOM (Abroad in Komaba)

AIKOM "Abroad in Komaba" is a program offered by the University of Tokyo's College of Arts and Sciences. It is designed to provide undergraduates (3rd and 4th years) from around the globe with an exciting learning experience in the company of excellent professors and active, highly-motivated students from all over Japan. To enable students with diverse academic backgrounds to participate, no prior knowledge of the Japanese language is required. The program operates under short-term exchange agreements stipulating a mutual waiver of tuition fees. Courses are offered in English, and credits may be recognized by the students' home universities.

Members: 25 universities from 17 countries

The AIKOM Program will be phased into the university-wide exchange program system by 2017.

http://go.c.u-tokyo.ac.jp/study_abroad

International Core Research Center for NanoBio (C2CNB) Summer Internship Program

The Graduate Schools of Medicine, Engineering, and Pharmaceutical Sciences at the University of Tokyo jointly operate this summer internship program.

The purpose of this program is to provide participants with biomedical research experience in the basic and translational sciences. Research projects will be posted on a separate webpage of C2CNB as shown below. The selected students will actively participate in ongoing research activities. At the end of their summer experience, students will submit their research data in a journal article. An "End of the Program Presentation" is also planned to provide an opportunity for participating students to present their results to a group of faculty members and graduate students. During the two-month period of the program, participating students will be given the opportunity to acquire research skills and, through participation in institutional seminars and lectures, receive guidance invaluable to assessing their career goals in relation to basic and translational research.

The program is open to any graduate students who have at least one year of laboratory experience.

<http://park.itc.u-tokyo.ac.jp/c2cnanobio/english/index.html>

University of Tokyo Research Internship Program (UTRIP)

UTRIP, the "University of Tokyo Research Internship Program," is an intensive summer research program targeting undergraduate students. Its underlying principles are centered on creating a challenging and rewarding experience for undergraduate students who are seriously thinking of pursuing advanced study at a higher education institute. During the program, the participants receive intensive guidance and hands-on experience on conducting research from the Faculty of Science's renowned faculty members. Students develop a better understanding of what is required to become a scientific researcher. The program is meant to be a good trial for students to test their aptitude for rigorous study in the natural sciences. Students who are given high evaluations by the faculty members will be given priority for the Faculty's scholarship. In addition to their research work, students will also have a chance to visit historical sites in Japan and take advantage of Japanese language courses.

<http://www.s.u-tokyo.ac.jp/en/utrip>



International Alliance of Research Universities Global Summer Program (IARU-GSP)

The International Alliance of Research Universities (IARU) Global Summer Program (GSP) is an assortment of intensive short courses hosted by the member universities of IARU. IARU is a collaboration between ten of the world's leading research-intensive universities who share similar visions for higher education, in particular the education of future leaders.

The GSP courses are designed for students from IARU member institutions to learn together, form an international community of young scholars, and to learn from and about each other. These courses are in line with IARU's commitment to grooming the future leaders of nations and industries.

The GSP offers the opportunity to live and learn in an intensive fashion at a foreign university through various formal and informal settings, during its residential program, from professors who are both researchers and teachers, and from interactions with students from other universities.

<http://www.iaruni.org/gsp>

Global Japan Studies

The Global Japan Studies program is designed to instill the knowledge necessary to understand the politics, economics, culture and society of Japan by taking lectures given by prominent faculty members from a variety of specialized fields. The program offers the students an insight into Japanese Studies that ranges from the fundamentals to specialized knowledge of Japan Studies. This course gives an opportunity to students whose proficiency in Japanese would normally prevent them from taking the normal lectures given in Japanese, to participate and learn topics relating to Japanese society. Students who complete the program will be issued with a 'certificate of completion'. This program will begin on a trial basis from October 2014 and will officially start in October 2015.

The University of Tokyo Summer Internship Program in Kashiwa (UTSIP Kashiwa)

The Graduate School of Frontier Sciences runs the English language short-term summer program UTSIP Kashiwa (The University of Tokyo Summer Internship Program in Kashiwa) targeting 3rd and 4th year undergraduate students from overseas institutions to strengthen their consideration towards attending graduate schools in Japan. The course provides selected students with an introduction to the natural sciences and social sciences through interdisciplinary lectures. After developing a research proposal, they will go on to gain first-hand experience of academic research processes under supervision in a laboratory of their selection and be exposed to cutting-edge research in the natural and social sciences. Students will also be given introductory Japanese language course and exposure to Japanese culture during their stay.

http://www.ilo.k.u-tokyo.ac.jp/exchange_programs_e/UTSIP/UTSIP_en.php

UTokyo Innovation Summer Program (TISP)

The University of Tokyo launched this summer program in August 2013. During the two-week TISP program, students, both from outside Japan and the University of Tokyo, will intensively experience classes, workshops and field research while honing their innovation skills, in Tokyo and the Tohoku region, specifically disaster-struck areas in the north-east of Japan. The entire program is built upon themes, which will lead to a wide variety of unique sub-themes.

TISP has four unique features: 1) A rigorous teaching method. The program offers classes/workshops built on two methodologies: the "i.school" method to foster people's innovative thinking, and the case-method teaching. 2) Japan-unique contents. Students learn from uniquely Japanese contents. In 2014, the two main themes are Japanese cultures and the Tohoku issues. 3) A mixed student body, and 4) Field experiences.

<http://ischool.t.u-tokyo.ac.jp/summer/>



Research Facilities

Affiliated Institutes

- Institute of Medical Science
- Earthquake Research Institute
- Institute for Advanced Studies on Asia
- Institute of Social Science
- Institute of Industrial Science
- Historiographical Institute
- Institute of Molecular and Cellular Biosciences
- Institute for Cosmic Ray Research
- Institute for Solid State Physics
- Atmosphere and Ocean Research Institute
- Research Center for Advanced Science and Technology

Hospitals

University-wide Centers

TODIAS (Todai Institutes for Advanced Study)

Libraries

Affiliated Institutes

The University of Tokyo is home to many affiliated institutes that engage in diverse research efforts, such as development of new medicine, mitigation of earthquake hazards, and exploration of sociocultural phenomena.

Each institute serves as a major hub for research in its field, and strives to broadly contribute to the advancement of society through its research achievements. Also, as members of the University of Tokyo's postgraduate education community, the institutes contribute to training the next generation of researchers.



Institute of Medical Science

医科学研究所

<http://www.ims.u-tokyo.ac.jp/imsut/en/>

The Institute of Medical Science (IMSUT) is one of the largest life science research institutes in Japan, including a wide range of activities from basic to clinical science. Targeting infectious diseases, cancer and other intractable diseases, IMSUT proceeds with cutting-edge medical science, aiming to develop and disseminate new preventions, diagnoses and treatment.

Highly original basic research is developed in the core research departments. Applied medical sciences are carried out in the affiliated research centers for

human genomes, experimental medicine, infectious diseases, mucosal vaccines, stem cell biology, regenerative medicine and advanced clinical research.

Furthermore, IMSUT is the only institute with an affiliated research hospital in Japan which has implemented front-line medical treatment such as new viral therapy, vaccine therapy for intractable cancer, gene and cell therapy, as well as treatment for regenerative medicine.



Departments

Microbiology and Immunology, Cancer Biology, Basic Medical Sciences

Research Facilities

Human Genome Center, Center for Experimental Medicine and Systems Biology, The Advanced Clinical Research Center, Center for Stem Cell Biology and Regenerative Medicine,

International Research Center for Infectious Diseases, Research Hospital, Laboratory Animal Research Center, Amami Laboratory of Injurious Animals, Laboratory of Molecular Genetics, Medical Proteomics Laboratory

Earthquake Research Institute

地震研究所

<http://www.eri.u-tokyo.ac.jp/eng/>

Targeting the entire earth, over 80 professors from the fields of seismology, volcanology, geophysics, geochemistry, geology, geodesy, applied maths, information science, civil engineering, engineering seismology, and a wide range of other fields have gathered, to lead cutting-edge research in earthquakes, volcanoes, and disaster preventions, as well as the earth's interior, through field observations, lab experiments, theoretics, analyses, and simulations.

We work together with the following: Department of Earth and Planetary Science,

Department of Civil Engineering, Department of Architecture, Graduate School of Interfaculty Initiative Information Studies, and Department of Complexity Science and Engineering, providing students with a unique graduate school education.

ERI invites excellent researchers and educators from around the world for collaborative research. ERI is also proactively involved in technological development to open new windows in the field of earth science, and has been producing leading-edge observation equipment and research results.



Research Divisions

Division of Theoretical Geoscience, Division of Monitoring Geoscience, Division of Earth and Planetary Materials Science, Division of Disaster Mitigation Science

Research Centers

Earthquake Prediction Research Center, Volcano Research Center, Ocean Hemisphere Research Center, Center for High Energy Geophysics Research, Research Center for Large-scale Earthquake, Tsunami and Disaster,

Coordination Center for Prediction Research of Earthquakes and Volcanic Eruptions, Center for Geophysical Observation and Instrumentation, Earthquake and Volcano Information Center

Institute for Advanced Studies on Asia

東洋文化研究所

The Institute for Advanced Studies on Asia was founded in 1941 as a research institute attached to the University of Tokyo to carry out comprehensive studies on Asia. Geographically speaking, the area of research ranges from Egypt to the Korean Peninsula. Academically, it spans almost all fields and disciplines of the humanities and the social sciences, including archaeology, history, philosophy, religion, literature, art, cultural anthropology, folkloristics, sociology, politics, and economics.

The two main pillars are thorough data research and field research. Concerning data, we possess one of the largest collections of books in classical Chinese in the world.

The Research and Information Center for Asian Studies (recognized as a Joint

Usage/Research Center by MEXT) is responsible for disclosing these data.

In order to boost its visibility as a truly international center of Asian studies, the Institute is responsible for editing the English-language *International Journal of Asian Studies*, IJAS (published by Cambridge University Press).

Research Departments

Pan Asian Studies, East Asian Studies, South Asian Studies, West Asian Studies, Pioneering Asian Studies



Affiliated Research Facilities

Research and Information Center for Asian Studies

<http://www.ioc.u-tokyo.ac.jp/eng/>

Institute of Social Science

社会科学研究所

The Institute of Social Science (ISS) was established in 1946 based on reflection of the bitter experience of the war and the nature of prewar Japanese social science research. The Institute aims to support the construction of a "democratic and peace-loving nation" by promoting empirical social science based on systematic collection of data and conducting comparative studies of high academic standards.

The disciplines of ISS cover the four academic fields: law, political science, economics and sociology of Japan, East Asia, Europe and the Americas.

Its mission is to conduct studies using historical and comparative perspectives, and to contribute to understanding of Japan and of the world by taking advantage of the interdisciplinary and international

nature of academic foundation.

ISS engages in educational activities in graduate and undergraduate schools by offering lectures and seminars. ISS also edits the *Social Science Japan Journal* (published by Oxford University Press) which features social science research on modern Japan.

The affiliated Center for Social Research and Data Archives operates the Social Science Japan Data Archive which collects, stores and disseminates social survey data on Japan.

Departments

Comparative Contemporary Law, Comparative Contemporary Politics, Comparative Contemporary Economics, Comparative Contemporary Societies, International Approach to Japanese Studies

Affiliated Research Facilities

Center for Social Research and Data Archives

<http://www.iss.u-tokyo.ac.jp/>



Institute of Industrial Science

生産技術研究所

The Institute of Industrial Science promotes comprehensive research and education in nearly all fields of engineering. We promote the development of interdisciplinary research that transects different fields from creative research based on researcher's ideas. Our activities focus on making these results useful to actual society and making them reflect graduate school level education. We are expanding our range of activities globally and playing an important role as a hub for an international research network.

Research Departments

Dept. of Fundamental Eng., Dept. of Mechanical & Biofunctional Systems, Dept. of Informatics & Electronics, Dept. of Materials & Environmental Science, Dept. of Human & Social Systems, Dept. of Management of Large Scale Complex System,

Guest Chairs for Advanced Interdisciplinary Modeling, Advanced Energy Conversion Eng., Endowed Research Unit for Non-ferrous Metal Resource Recovery Eng., Nikon Imaging Science, Academic-Industry Partnership for Proactive & Holistic Energy Demand Management for Construction Sector Social Cooperation Program, Mobility and Field Science, Immunology Social Cooperation Program

Affiliated Research Centers & Experiment Station

Chiba Experiment Station, Center for Int. Research on Micronano Mechatronics (CIRMM), Int. Research Center for Sustainable Materials (IRCSM), Int. Center for Urban Safety Eng. (ICUS), Center for Photonics Electronics Convergence (CPEC), Center for Socio-Global Informatics, Center for Research on Innovative Simulation Software (CISS), Collaborative Research Center for Energy Eng. (CEE), Advanced Mobility Research Center (ITS Center), Center for Research on Integrated Biomedical Systems, Nanoelectronics Collaborative



Research Center, Collaborative Research Center for Bio Nano Hybrid Process, Collaborative Research Center for Innovative Mathematical Modelling, Collaborative Research Center for Manufacturing Innovation (CMI), Underwater Technology Collaborative Research Center, Social Big Data ICT Collaborative Research Center, LIMMS CNRS-IIS (UMI 2820), Max Planck-The University of Tokyo Center for Integrative Inflammolgy

http://www.iis.u-tokyo.ac.jp/index_e.html

Historiographical Institute

史料編纂所

There is still an abundance of historical resources left in Japan, an amount unprecedented elsewhere. Our Institute collects records on Japanese history from ancient times to the Meiji Restoration, from around Japan and the world. Through our research on them we compile and publish historiographies that form the foundation of Japanese historical research. The Historiographical Institute has been carrying out this work for over 100 years, and have published over 1000 works aimed at academic and wider circles. Our investigations and acquisitions have allowed us to obtain copies of historical records, as well as invaluable original manuscripts, such as the Shimazu documents, which are national treasures. We work to preserve and manage these records, and provide

researchers access to them for perusal.

Recently, our focus is to research visual sources, such as portraits and picture scrolls, and historical information using computers. The Institute is working at various ventures to expand the possibilities of historical research.

Departments

Ancient Materials, Medieval Materials, Early Modern Materials, Old Documents and Diaries, Special Materials



Affiliated Research Institutions

Center for the Study of Visual Sources, International Center for the Digitization of Pre-modern Japanese Sources

<http://www.hi.u-tokyo.ac.jp/index.html>

Institute of Molecular and Cellular Biosciences

分子細胞生物学研究所

The Institute of Molecular and Cellular Biosciences (IMCB) consists of 288 academic and administrative staff members, postdocs and graduate students and carries out interdisciplinary research to understand life at the molecular level. IMCB supports creative research in a wide range of fields: such as protein structure, cell division, genome function, role of non-coding RNA, developmental biology, neuroscience, and cancer research, amongst others.

IMCB acts as a hub in the field of structural biology together with the University of Tokyo Synchrotron Radiation Research Organization. IMCB also advances cutting edge research into drug development and

has a highly active industrial collaboration program. To further expand and accelerate these efforts, IMCB has established the Research Center for Epigenetic Diseases and Center of Crystallography for Challenging Proteins. IMCB accepts graduate students from the Graduate Schools of Science, Agriculture, Pharmaceutical Sciences, Medicine, Engineering and Frontier Sciences and contributes to education at the University.

Research Departments

Core Research Laboratories



Annexed Research Facilities

Center for Structural Biology of Challenging Proteins, Research Center for Epigenetic Diseases

<http://www.iam.u-tokyo.ac.jp/index.html>

Institute for Cosmic Ray Research

宇宙線研究所

The Institute for Cosmic Ray Research carries out interdisciplinary research on the universe and elementary particles through the study of cosmic particles from outer space. For example, neutrinos have given an insight into the inner dynamics of celestial objects which cannot be seen by optical observation, and also provided information about their tiny masses through the phenomena of neutrino oscillation.

At Kamioka Observatory, the Super-Kamiokande detector presses on with neutrino research and an experiment searching for dark matter particles is in progress. At the same time, a large detector to observe gravitational waves predicted by Einstein's General Theory of Relativity is under construction. Overseas deserts are suitable for studying luminesthese cent

phenomena due to cosmic particles entering the atmosphere. In Tibet, research into high-energy cosmic gamma rays is being carried out. In addition, an experiment is being carried out in Utah in the USA to unlock the puzzle of the most energetic cosmic rays.

Research Divisions

Astrophysics and Gravity, High Energy Cosmic Ray, Neutrino and Astroparticle



Research Facilities

Norikura Observatory, Akeno Observatory, Kamioka Observatory, Research Center for Cosmic Neutrinos

http://www.icrr.u-tokyo.ac.jp/index_eng.html

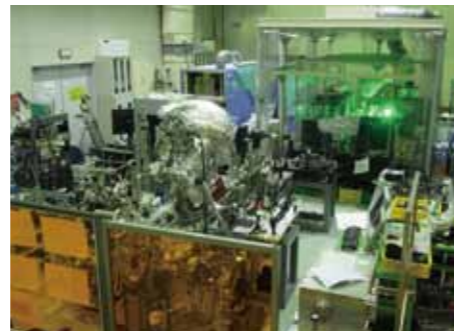
Institute for Solid State Physics

物性研究所

The mission of condensed matter science is to discover novel properties of matter and to understand them using basic principles of physics and chemistry. The Institute for Solid State Physics (ISSP) comprises four research divisions and five affiliated laboratories, supplemented by supporting organizations, and promotes cutting-edge research in the various fields comprising solid state physics. The ISSP is a joint-use research center hosting

researchers from around the country and around the globe. The faculty members of the ISSP also participate in graduate education in the Departments of Physics and Chemistry in the Graduate School of Science, the Department of Applied Physics in the Graduate School of Engineering, and the Departments of Advanced Materials Science in the Graduate School of Frontier Sciences.

http://www.issp.u-tokyo.ac.jp/index_en.html



Research Divisions

Division of New Materials, Division of Condensed Matter Theory, Division of Nanoscale Science, Division of Physics in Extreme Conditions

Affiliated Research Laboratories

Materials Design and Characterization Laboratory, Neutron Science Laboratory, International MegaGauss Science Laboratory, Center of Computational Materials Sciences, Laser and Synchrotron Research Center

Atmosphere and Ocean Research Institute

大気海洋研究所

The Atmosphere and Ocean Research Institute promotes basic research on the oceans and atmosphere which play important roles in earth surface environment, climate change, and evolution of life. We also develop research which will lead to solutions to important issues concerning sustainability facing humanity and the biosphere through advanced field observations, laboratory experiments, numerical modeling, and biospheres through advanced field analyses. As a world-leading

center of atmosphere and ocean science, we strongly promote cooperative research both domestically and internationally.

Along with these advanced research activities, we actively participate in education programs with graduate schools in order to foster the development of qualified researchers who will lead atmosphere and ocean science and experts who can contribute to society through their wide knowledge on the oceans, atmosphere, climate, and earth-biosphere.

<http://www.aori.u-tokyo.ac.jp/english>



Divisions

Climate System Research
Ocean-Earth System Science
Marine Life Science

Research Centers

International Coastal Research Center
Center for International Collaboration
Center for Earth Surface System Dynamics
Analytical Center for Environmental Study

Affiliated Research Facilities

Center for Cooperative Research Promotion

Research Center for Advanced Science and Technology

先端科学技術研究センター

As a research institution that does not bear a specific discipline name, our mission is to respond to the emerging problems in the society which require prompt and multidisciplinary attention. Our expertise covers areas of research from economics and medicine to engineering. We seek partners worldwide in establishing research consortia while each member in the center is expected to play a pivotal role in the partnership.

We are promoting industry-academia-government collaboration by engaging in various forms of personnel exchanges, as well as by conducting joint feasibility studies.

Current thrust areas:

Information technology, medical/chemical biology, environment and new energy, nano-materials, barrier-free, and technosociology.

Affiliated Research Facilities

Academia, Industry Joint Laboratory for Renewable Energy

<http://www.rcast.u-tokyo.ac.jp/en>



Hospitals

The University of Tokyo Hospital

医学部附属病院

<http://www.h.u-tokyo.ac.jp/english/>

IMSUT Hospital, The Institute of Medical Science

医科学研究所附属病院

<http://www.h.ims.u-tokyo.ac.jp/english/index.html>

University-wide Centers

Environmental Science Center

環境安全研究センター

<http://www.esc.u-tokyo.ac.jp/english/index-e.html>

Biotechnology Research Center

生物生産工学研究センター

<http://park.itc.u-tokyo.ac.jp/biotec-res-ctr/>

Information Technology Center

情報基盤センター

<http://www.itc.u-tokyo.ac.jp/index-e.html>

Asian Natural Environmental Science Center

アジア生物資源環境研究センター

http://www.anesc.u-tokyo.ac.jp/index_en.html

International Center for Elementary Particle Physics

素粒子物理国際研究センター

<http://www.icepp.s.u-tokyo.ac.jp/index-e.html>

Center for Spatial Information Science

空間情報科学研究センター

<http://www.csis.u-tokyo.ac.jp/english/>

Center for Research and Development of Higher Education

大学総合教育研究センター

<http://www.he.u-tokyo.ac.jp/en/>

VLSI Design and Education Center

大規模集積システム設計教育研究センター

<http://www.vdec.u-tokyo.ac.jp/English/index.html>

Cryogenic Research Center

低温センター

http://www.crc.u-tokyo.ac.jp/index_e.htm

University Museum

総合研究博物館

http://www.um.u-tokyo.ac.jp/index_en.html

Radioisotope Center

アイソトープ総合センター

<http://www.ric.u-tokyo.ac.jp/>

Policy Alternatives Research Institute (PARI)

政策ビジョン研究センター

<http://pari.u-tokyo.ac.jp/eng/index.html>

Research into Artifacts, Center for Engineering

人工物工学研究センター

http://www.race.u-tokyo.ac.jp/index_e.html

TODIAS (Todai Institutes for Advanced Study)

Kavli Institute for the Physics and Mathematics of the Universe

カブリ数物連携宇宙研究機構

<http://www.ipmu.jp/>

Integrated Research System for Sustainability Science (IR3S)

サステイナビリティ学連携研究機構

<http://en.ir3s.u-tokyo.ac.jp/>



Libraries 図書館

The University of Tokyo Library System is comprised of the General Library, Komaba Library, Kashiwa Library on the three main campuses, and 32 departmental libraries located in the University's Graduate Schools, Faculties and Institutes. The entire collection growing yearly includes more than nine million books, subscriptions to many print journals and various digital sources, such as databases, e-journals and e-books. Due to the ever-increasing number of acquired books and the de-

velopment of new electronic mediums, the university has put into operation a new library project with five main aims: (1) to combine the digital library and traditional library, (2) to house a world leading research library for Asian studies, (3) to support collaborative and international education, (4) to provide Japan's academic culture to the world, and (5) to act as a public foundation of publishing culture. Construction of the modified General Library started last year which will result in a new learning

space where students, researchers and faculty members will be able to discuss their research, hold meetings and seminars. Underground automated storage and retrieval systems will hold around three million volumes, freeing space in the General Library for modifications once the new annex has been completed. URL: <http://www.lib.u-tokyo.ac.jp/index-e.html> (Library System) <http://new.lib.u-tokyo.ac.jp/en/> (New Library Project)



Important Information for International Students

Housing

Japanese Language Classes

Scholarships

Tuition Fees

Cost of Living in Japan

Support Facilities for Students

Sports and Recreational Facilities

Restaurants, Cafés and Shops

Housing

1. University Housing for International Students

The University of Tokyo operates residence halls that are open to international students and to which applicants are accepted twice a year. Applications can be made through the University of Tokyo's Online Accommodation Application System about three months prior to the April/October moving-in periods. Please note that as rooms are limited, there may be times when applicant cannot be accommodated.

2. Company Dormitories

Some companies in Japan own employee dormitories and, as a courtesy, rent some rooms to international students at affordable rates. Applications are accepted several times a year and can be done through the administrative office of your graduate school or faculty after enrollment. Most of the rooms are in male dormitories, so there are very few rooms available to female students, married couples or families.

3. Private Apartments

The rent for private apartments varies considerably depending on factors such as distance from the nearest train station, age of the building, room size, exposure to sunshine, and surrounding environment. Generally, the monthly rent for a one-room apartment runs in the range of JPY 60,000 to JPY 90,000. Approximately 60% of the university's international students reside in private rental housing (as of the 2006 school year).

Most private rental housing is unfurnished, so you will need to supply your own gas cooker, lights, carpeting, curtains, bed, and so forth. Also, you need to have a guarantor co-sign the lease, and you will need to pay the equivalent of five or six months' rent at the signing to cover such costs as the deposit, key money (*reikin*), agent's commission, and initial rent. For some helpful information on apartment searching in Japan, see "Useful Tips to Find Housing in Japan", which is available for download at:

http://www.u-tokyo.ac.jp/en/administration/housing-office/useful_tips/index.html

Housing-Related Information

<http://www.u-tokyo.ac.jp/en/administration/housing-office>

http://www.u-tokyo.ac.jp/en/about/publications/handbook/digital_bookE.html



Japanese Language Classes

The University of Tokyo's Center for Japanese Language Education offers a variety of Japanese language courses for international students across the University.

Although some courses have restrictions on the types of students eligible or require applicants to take a test for screening, most courses can be taken by any international student at the University of Tokyo, provided that application is made within the specified period. Additionally, some courses are also open to foreign researchers other than international students, as well as the spouses of international students/researchers. Please see the website of the center. http://www.nkc.u-tokyo.ac.jp/index_e.html

Some graduate schools and certain departments offer Japanese language courses run separate from those run by the Center for Japanese Language Education. Most are intended for international students enrolled in that school or department, but some are open to spouses and international students in other graduate school/departments.

Please see the International Student Handbook for more details.

Scholarships

1. The University of Tokyo Special Scholarship for International Students (The University of Tokyo Fellowship)

Monthly amount: (FY 2014)
JPY 200,000/JPY 150,000

The University of Tokyo Special Scholarship for International Students, or the University of Tokyo Fellowship, is a research grant offered to privately-financed international graduate students who demonstrate academic excellence. For details, see the website listed below or contact the graduate school you wish to enter.
Details: http://www.u-tokyo.ac.jp/res03/i28_j.html

2. Japanese Government (MEXT) Scholarships

The Japanese Ministry of Education, Culture, Sports, Science and Technology (MEXT) runs a scholarship program for international students.

Monthly amount: (FY 2014)
Undergraduate students:
JPY 117,000 – 120,000
Graduate research students:
JPY 143,000 – 146,000
Graduate school Master's students:
JPY 144,000 – 147,000
Graduate school doctorate students:
JPY 145,000 – 148,000

Note: The scholarship amount is subject to change depending on the annual budget of each year.

How to Apply

1) Embassy Recommendation:

Note 1: Students who are selected by their local Japanese Embassy should contact the prospective adviser by the end of August.

Note 2: Application forms are available at Japanese Embassies in April.

2) University Recommendation:

Note 1: Students who wish to apply for the MEXT scholarship through the University are highly recommended to contact the prospective adviser before the end of September.

Note: Students who are granted this scholarship through university

recommendation are required to pursue their studies at the Japanese university that recommended them, and hence may not enroll in or transfer to a different university.

3. Other Scholarships

Some scholarships are provided for specific categories of students by private foundations which are applied for before arriving in Japan. Examples are:

Yoshida Scholarship Foundation's YKK Leaders 21 Scholarship
<http://www.yzf.or.jp/englishpage/index.html>

Ajinomoto Scholarship for ASEAN International Students
<http://www.aji-syogakukai.or.jp/> (Japanese site only)

In addition to the scholarships listed above, there are a variety of scholarships that can be applied for upon arrival in Japan. However, competition for those scholarships at the University of Tokyo is very intense. For details, see the following websites.

The University of Tokyo
http://www.u-tokyo.ac.jp/res03/i22_e.html
Japan Student Services Organization (JASSO)
http://www.jasso.go.jp/study_j/scholarships_e.html
Japan Study Support
<http://www.jpss.jp/en/scholarship/> (English)
<http://www.jpss.jp/ko/scholarship/> (Korean)
<http://www.jpss.jp/zh-cn/scholarship/> (Chinese)

*All information above is subject to change.



Tuition Fees

The following table lists the current tuition fees for the University of Tokyo students.

Note: Students receiving the Japanese Government (Ministry of Education, Culture, Sports, Science and Technology - MEXT) scholarships do not need to pay tuition and certain other fees.

Student Category	Under-graduate	Graduate (excl. School of Law)		Juris doctor/ Professional
		Master's/ Professional	Doctorate/ PhD in Medicine or Veterinary Science	
Admission fee	282,000	282,000		282,000
Tuition fee (annual)	535,800	535,800	520,800	804,000

Student Category	Research Student	Auditing Student
Admission fee	84,600	28,200
Tuition fee	Monthly: 28,900 / Annual: 346,800 /	14,800 per credit

All prices quoted above are in JPY

Information on tuition:

<http://www.u-tokyo.ac.jp/en/campus-life/students/financial-aid/tuition/payments.html>

Information on exemptions:

<http://www.u-tokyo.ac.jp/en/campus-life/students/financial-aid/tuition/exemptions.html>

Cost of Living in Japan

Tokyo has the highest level of living expenses in Japan, a country that is known as one of the world's most expensive places to live. The table below lists the average prices of some necessities and may be useful as a reference for budgeting your living expenses. Similar information is also available through various independent websites.

Item	Unit	Average Price (JPY)
Rice (blended)	5 kg	2,224
Bread	1 loaf	150
Milk	1 liter	215
Butter	200 g	390
Cola	500ml	95
Toilet Paper	12 rolls	233
Tooth brush	1	117
Utilities (Electricity, gas, water, etc.)	Basic monthly for 85m ² apartment	21,195
Rent (monthly)	1 bed apt. city center	139,000
	1 bed apt. outside of center	71,000
	3 bed apt. city center	335,000
Bottled Water	3 bed apt. outside of center	172,000
	1.5 liter	147

Sports and Recreational Facilities

The University of Tokyo has a wide variety of sports facilities which students are able to use at a much more favorable rate compared to commercially available facilities.

Within the three campus grounds there are sports fields, gymnasiums and training rooms, a swimming pool, a baseball field, and many more sports facilities available.

Outside of town, the Athletics Foundation of the University of Tokyo has several recreational facilities, collectively known as "Sportia", which the students, faculty and staff members are able to use for various purposes. Each facility has its own unique features. For instance, at the Heda facility, the University holds a full marathon each year, while the Shimokamo facility has an *onsen* within its grounds.

Some of the Faculties/Graduate Schools also have recreational facilities which their students and staff are able to use. For example, the Tambara Institute of Mathematical Sciences which is operated by the Graduate School of Mathematical Science.

The University also has various facilities for Japanese *Budo*, for example, dojo – for judo and karate, *kyuudo-jo* – for Japanese archery, a place for sumo, etc. There are also a range of clubs such as equestrian, boating and glider clubs, giving the students a wide selection to choose from.



Support Facilities for Students

The University of Tokyo provides a diverse array of support to students, both Japanese and international, to help them enjoy a pleasant, rewarding experience. Some of the types of support offered are listed below, but more detail on the kind of support available at UTokyo is available in the "International Student Handbook 2014" as well as on each facility's website.

http://www.u-tokyo.ac.jp/en/about/publications/handbook/digital_bookE.html

International Center

The International Center has offices on all three main campuses and provides various support for international students, researchers and their families.

Hongo Office

http://www.ic.u-tokyo.ac.jp/ic/index_e.html

Komaba Office

<http://www.ic.u-tokyo.ac.jp/komaba/en/index.html>

Kashiwa Office

<http://www.ic.u-tokyo.ac.jp/kashiwa/english/index.html>

Note PC Reuse Office

The Note PC Reuse Office recycles unwanted laptop computers collected from laboratories and departments, and lends them out to students for free. All collected laptops are clean, installed with an operating system and an office software ready for immediate use. This program not only provides support for univer-

sity students but also makes effective use of resources and is an effort to reduce the environmental impact of the University's activities. This service is open to any student of the university after screening applications.

<http://pcreuse.adm.u-tokyo.ac.jp/english/index.html>

Division for Counseling and Support

The Division for Counseling and Support is a place where you can go and ask any kind of questions and consult about any topics you wish to discuss.

<http://dcs.adm.u-tokyo.ac.jp/en/>

Division for Health Service Promotion (Health Service Center on each campus)

The University of Tokyo Health Service Center's aim is to support the healthcare of students, faculties and staff for their well-being and fruitful academic life in studies and educational research activities.

<http://www.hc.u-tokyo.ac.jp/en/index.html>

Restaurants, Cafés and Shops

The choice of cuisine available on the campuses of the University of Tokyo is very wide, ranging from the cafeteria-style to full-course restaurants, from Japanese to French and Italian. On Kashiwa Campus, you can find the first on-campus sushi restaurant in Japan, if not the world.

Vegetarian dishes and halal food are available in some restaurants. At lunchtime there are delivery vans serving food, which adds to the choices available. The University Co-op and convenience stores on campus also sell packed lunches and sandwiches. The Co-op also sells stationeries, books, day-to-day items and other items useful for student life.

There are a large number of restaurants and shops surrounding the campus, while nearby districts are easily accessible by train and bus from Komaba and Kashiwa Campuses.

In addition to restaurants, there are several well-known, high street brands of coffee shops on campus.



Words from Our Members

Have you found what you want to do, goal you want to achieve, your “Everest” that you want to climb? I believe that unlike high schools, universities are a place where you go after careful consideration of your future, a first step based on your own decision down the path to your destiny. I have seen students on the Komaba Campus who are already moving towards their goals and others who have yet to decide their future paths. However, I think that with the lectures, seminars, and listening to excellent presenters in the wide variety of fields covered by the Junior Division of the University of Tokyo, one by one a decision will be reached.

It almost feels like each student is being polished by the lectures in a place where cutting-edge research is being done. Specialized terms in topics never before encountered did cause problems in the beginning, but the feeling of achievement having overcome these problems, has been a part of my development to what I am now. The University of

Tokyo has the tolerance in not only offering but accepting a wide range of ideologies, and because of this students are able to find their “Everest” and participate throughout the frontiers of their fields.

Life at Komaba is filled with opportunities like learning, “circles”, clubs, part-time work, and internships, and I think, through all these opportunities you will have the chance to grow in person and spirit and encounter the new you. I hope that you will come and look for the university life you dreamed of here.



Kaliun Dovchinsuren
Mongolia

3rd Year Department of Finance
Faculty of Economics

Do you know the “*Dokodemo door*”? It is one of the tools in *Doraemon* which is a famous Japanese comic/anime. It enables you to visit anywhere you want to go. Here, the University of Tokyo is just like the “*Dokodemo door*”.

I can say that the most amazing characteristic of the University of Tokyo is the surroundings in which various chances are stuffed in and the attractive people in it. I remember how I was shocked when I entered here. When I was looking at pamphlets for lectures to make my time schedule, I noticed that a huge number of lectures from various fields were on it and we could take them freely. By talking with senior students, I found that students eagerly joined in club activities and had part-time jobs and they exchanged opinions and stimulated each other. This university offers you all kind of chances in your school life.

Let me tell you about my experience. When I entered this university, I didn't know what I really wanted to learn or what I really wanted to be. However, while I was taking and studying variety of fields and talking with the professors, I gradually found I have great interest in agricultural economics. Finally, I decided to enter the Faculty of Agriculture and I'm now studying overseas for six months about

food marketing at a grande école in Paris. Additionally, I'm a member of a dance club and as we performed on stage, I found the importance of promotion and marketing to draw people to our stage along with the pleasure of making a fantastic stage from nothing with my team members. These activities give me a sign post in my life and affected my decision of what I want to be in the future.

Life at the University of Tokyo is filled with so many kinds of chances that are free and enjoyable, but, please remember that what chance you take and how your school life goes depend on your choices. So think carefully and deeply about what you want to be. The more you think about it, the more you will gain. This “*Dokodemo door*” gives you passages which leads you to everywhere, but you are to decide on which direction.



Ayaka Otani
Japan

4th Year Environmental Resources
Sciences
Faculty of Agriculture

One of the primary reasons for choosing this university came about when I visited Tokyo for the first time. What struck me most within that short stay was the extreme adeptness, dedication and sincerity that triumphed in the everyday lives of the people in the city. Within a seemingly regimented modern metropolis there were streaks of an underlying culture and a profound aesthetic that were ubiquitous in the form of people, gestures and nuanced in architecture.

UTokyo exhibited those same qualities in its pedagogy and I feel that it has been a privilege being associated with the University of Tokyo, where I have learnt to contribute to a culture of honoring traditions while simultaneously paving paths for emerging futures of science and technology. Coming from a developing country it has been nothing short of overwhelming to take part in research that defies norms and incumbent practices by challenging “what is” to “what should be”.

We are in an era where the shift in global dynamics of capital, economy and development is Asian centric. There

is more and more emphasis in trying to understand Asian culture and practices in order to maximize their foothold in terms of intellectual and industrial expertise. The University of Tokyo emerges as the foremost institution in this regard where its long standing role as the best university in Asia not only reflects its insight over its role as an intellectual engine for Japan but demonstrates its unceasing commitment for a better understanding of an all-encompassing Asia. I am confident that the University of Tokyo will give me the platform that I need in order to expand on my own research abilities and help me bridge the intellectual divide between developing Asian countries and Japan.



Fawad Nadir Osman
Islamic Republic of Pakistan

1st Year Master's Student
Department of Architecture
Graduate School of Engineering

I had never heard of the University of Tokyo when I was selected as a Chinese government-sponsored overseas student in the 1980s. I can still remember when I arrived in Japan and at the University that at the time I was surprised and slightly repulsed by the cultural differences and beliefs.

The University of Tokyo remains the most prestigious educational institution in Japan and although this may vary depending on the evaluation criteria, in my opinion, it is still the top university in Asia.

I have heard that the current mission set by the University of Tokyo is to encourage students to “be more resilient, more global” and that one of the strategies to achieve this goal is to increase the number of international students. My learning and experience during the five years in the Uni-

versity have not only provided me a solid foundation for my career, but came to also influence my whole life.



Yan Hao

People's Republic of China

Ph.D. Graduate School of Medicine
Chairman & CEO
EPS Corporation

Ever since I immigrated to Brazil when I was five years old, I was always told that the University of Tokyo (UTokyo) was one of the best academic institutions in Japan. I grew up dreaming with the idea of studying there some day. After finishing my undergraduate studies in Law at the University of Sao Paulo, I was selected to study in Japan with a scholarship provided by the Japanese Ministry of Education and my dream finally came true.

I will never forget the first time I came to UTokyo in October 1972. When I stopped at the Akamon (Red Gate) and realized that it was built in 1827, I could barely hold my emotions since it was the same year that the Law School of the University of Sao Paulo was founded. It was a deep connection between the two academic institutions and I was about to step into what came to be my second Alma Mater.

I spent ten years on Hongo Campus, first as a Foreign Research Student, followed by my admission as a Master's student and finally into the Doctorate Program. I owe a great debt of gratitude to the professors, tutors and colleagues of the Graduate School, who bestowed their attention and care upon a foreign student who possessed little knowledge of the Japanese language. It is with deep respect, appreciation and fond memories that I mention my mentors, the late professors Yuichi Takano, Sueo Ikehara and Eiichi Hoshino.

I returned to Brazil and started teaching at the University of Sao Paulo in 1986. Some years later, I was invited to teach as a visiting professor at UTokyo, in the newly created

chair of Ibero American Law. I considered it a great honor to teach at my second Alma Mater, and what I thought to be an invitation for one or two terms was extended into an assignment that lasted 22 years until 2013, when I taught for the last time due to retirement age. I used to come to Japan around the end of autumn and beginning of winter, after finishing the teaching activities in Brazil. It was a very important experience, and also the first time Ibero American Law was taught in Japanese universities. Nowadays several institutions adopted the course, due to the increasing interest in Comparative Law. Teaching at UTokyo every year allowed me to reconnect with Japan and my second Alma Mater, whilst walking around the campus admiring the profusion of autumn yellow leaves.



Masato Ninomiya

Brazil

Ph.D. Graduate Schools for Law and Politics
Professor Doctor
Department of International and Comparative Law
University of Sao Paulo Law School
President of Brazil *Akamonkai* (UTokyo Alumni Association in Brazil)

When I entered the University of Tokyo in 2000 as a graduate student, I did not even imagine I would still be here (now as a faculty member) more than ten years later. The main reason is nevertheless very simple: this is one of the best places to be for doing research.

Life as a student at the University of Tokyo was very exciting. I enjoyed the lectures, the seminars, and life inside and outside the laboratory. I did several extracurricular activities: for instance I started Japanese archery and practiced this martial art for four years – this was a great experience, with lots of opportunities to experience Japanese-style student life, such as camps in the mountains near Tokyo where we practiced archery all day. But, most importantly, the University of Tokyo is the place where I discovered and followed my research interests.

Studies, especially graduate studies and research, are always challenging, but the rewards are well worth the

efforts. I believe that the University of Tokyo offers to students one of the best possible environments to rise to this challenge and help them fulfill their potential – this was definitely the case for me.



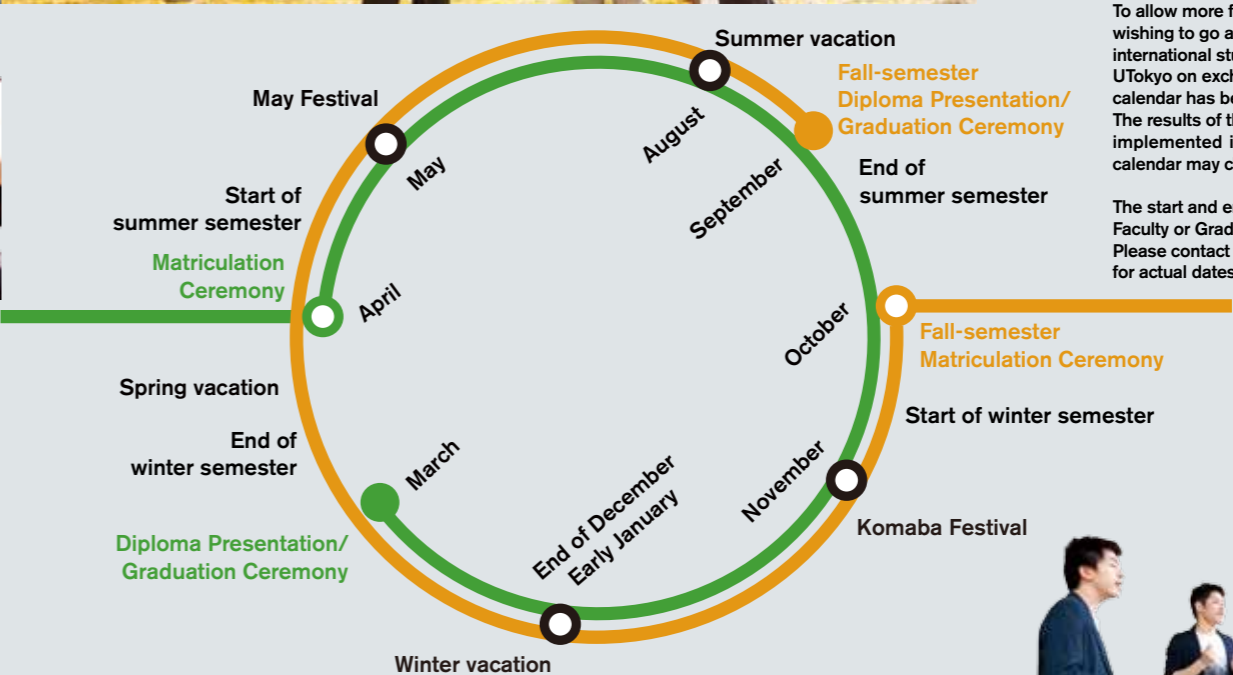
François Le Gall

France

Project Associate Professor
Dept. of Computer Science
Graduate School of Information
Science and Technology

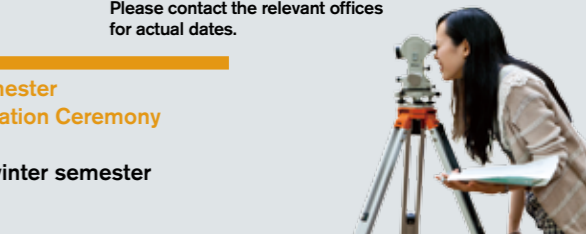


Academic Calendar



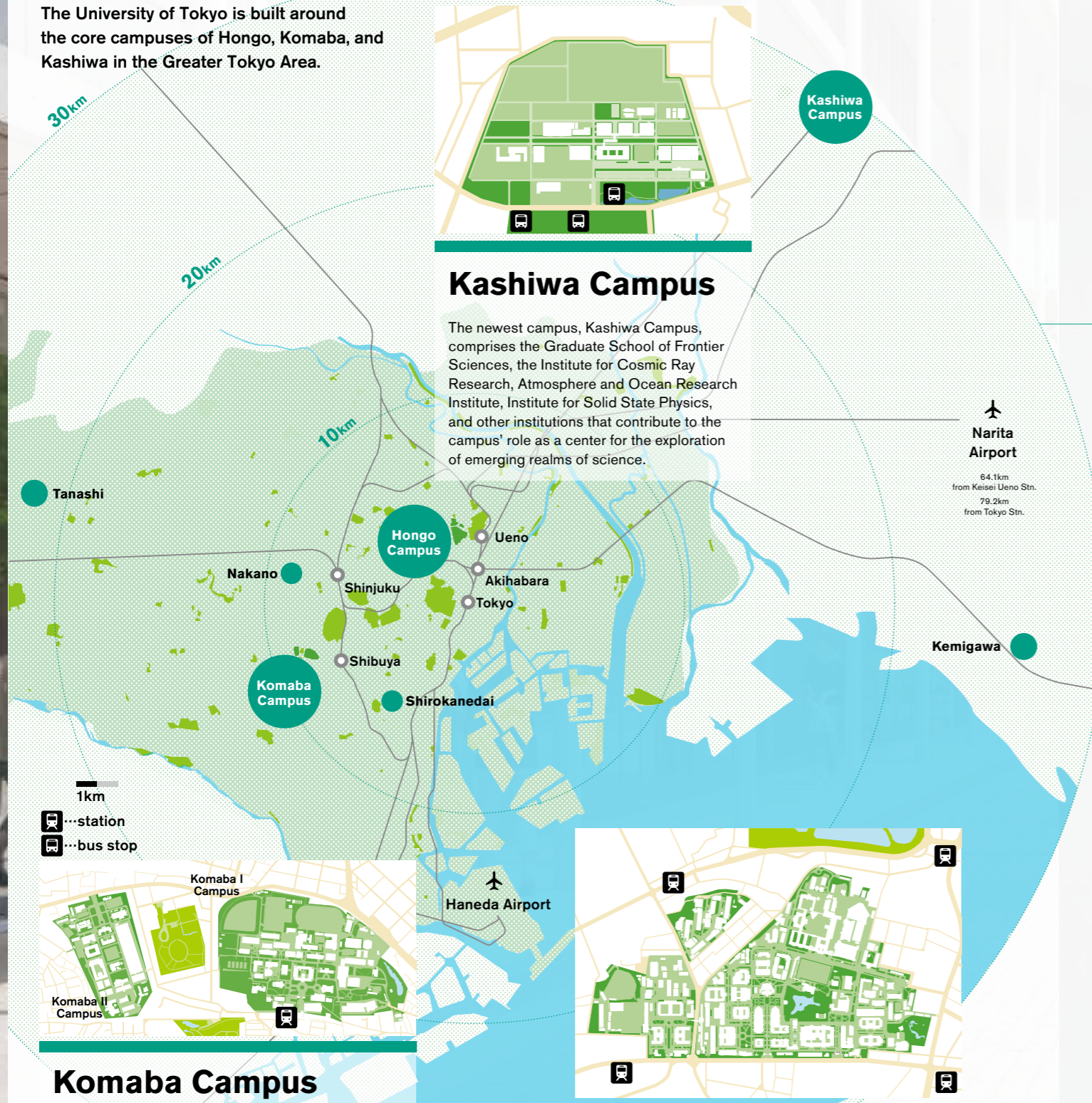
To allow more flexibility and choice for students wishing to go and study abroad as well as for international students to come and study at UTokyo on exchange, a review of the academic calendar has been conducted by the University. The results of the review will be formalized and implemented in due course, so the academic calendar may change in the future.

The start and end dates vary depending on the Faculty or Graduate School. Please contact the relevant offices for actual dates.



Three Core Campuses

The University of Tokyo is built around the core campuses of Hongo, Komaba, and Kashiwa in the Greater Tokyo Area.



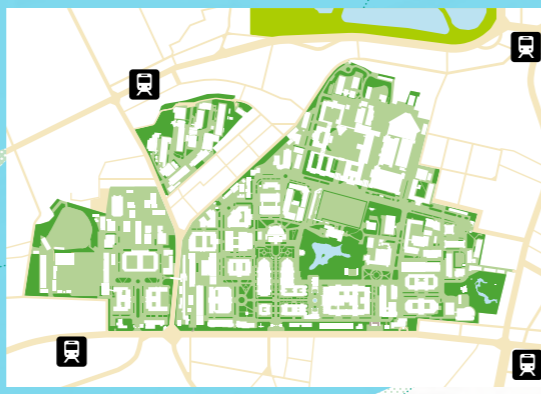
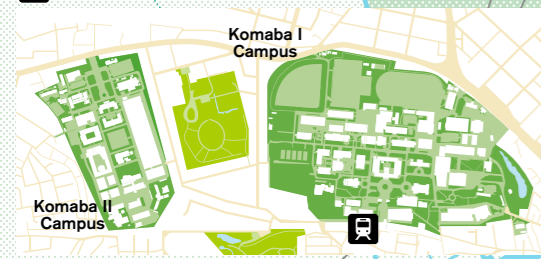
Kashiwa Campus

The newest campus, Kashiwa Campus, comprises the Graduate School of Frontier Sciences, the Institute for Cosmic Ray Research, Atmosphere and Ocean Research Institute, Institute for Solid State Physics, and other institutions that contribute to the campus' role as a center for the exploration of emerging realms of science.

Narita Airport

64.1km from Keisei Ueno Stn.
79.2km from Tokyo Stn.

1km
station
bus stop



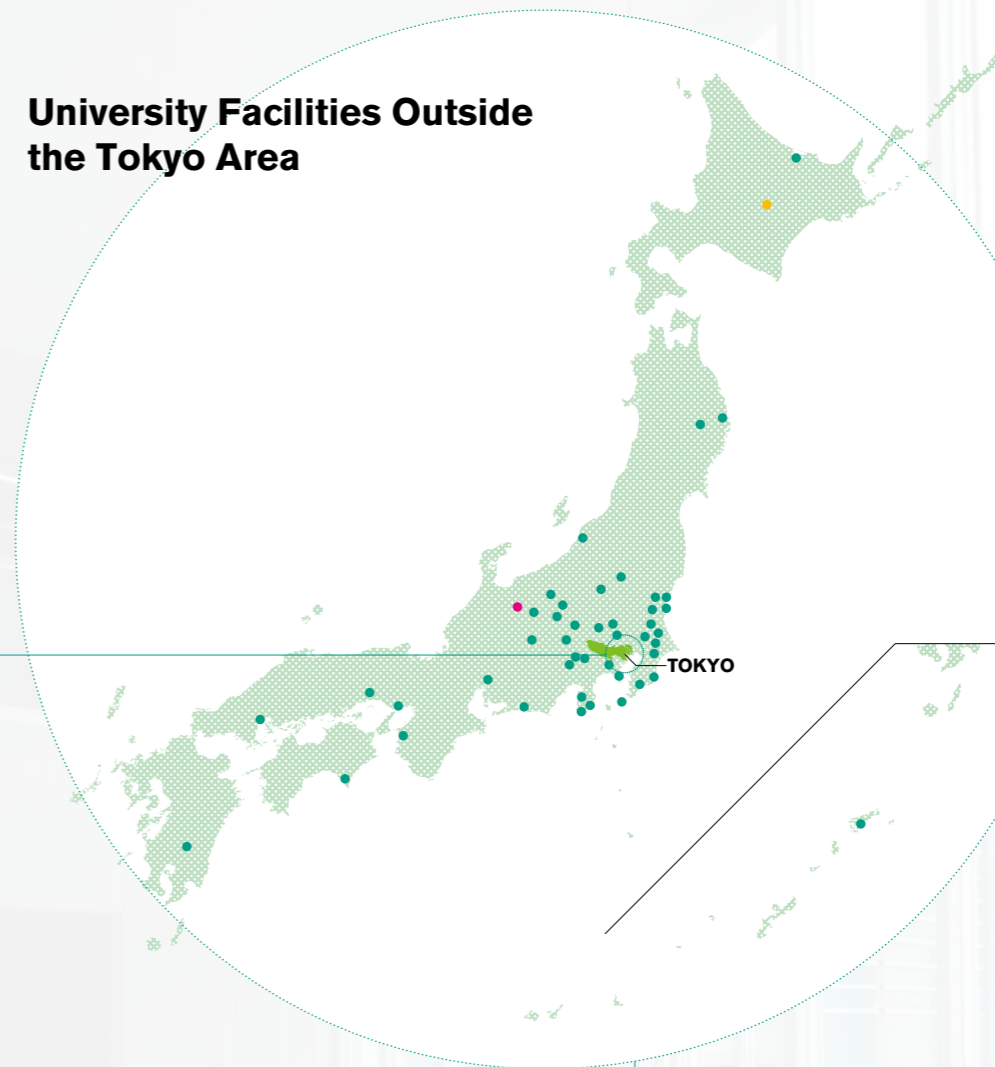
Komaba Campus

Komaba I Campus is centered on liberal arts education and interdisciplinary research, primarily at the lower undergraduate level. It is also the home of the Graduate School of Arts and Sciences and the Graduate School of Mathematical Sciences. Komaba II Campus, a research-focused extension, includes such facilities as the Institute of Industrial Science and the Research Center for Advanced Science and Technology.

Hongo Campus

The cornerstone of three core campuses of the University of Tokyo, Hongo Campus, was founded for the pursuit of traditional forms of education and research, spanning the upper undergraduate and graduate levels.

University Facilities Outside the Tokyo Area



The University of Tokyo Hokkaido Forest near Furano, Hokkaido. (map ●)



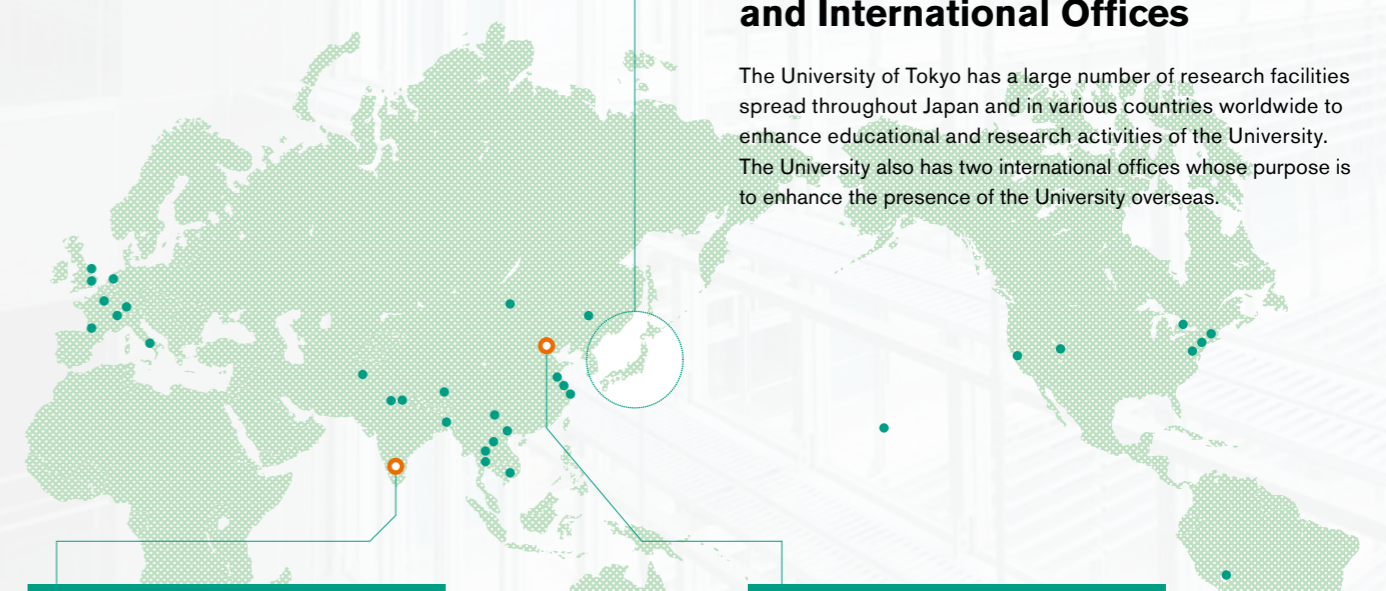
Looking into the Super-Kamiokande Detector nearly full of water. (map ●)



mini-TAO 1m telescope located 5600m high on summit of Co. Chajnantor in Atacama, Chile (map ●)

Worldwide Research Facilities and International Offices

The University of Tokyo has a large number of research facilities spread throughout Japan and in various countries worldwide to enhance educational and research activities of the University. The University also has two international offices whose purpose is to enhance the presence of the University overseas.



The University of Tokyo India Office

Location
Unit No.412 Prestige Meridian-1, No.29, M.G.Road, Bangalore, 560001 India
Tel: +91-80-4150-8509
Email: indiaoffice@ml.adm.u-tokyo.ac.jp

日本東京大学北京代表处 The University of Tokyo Beijing Office

Location
1018, Resource Plaza, No.151 Zhong Guan Cun BeiDaJie, Haidian District, Beijing, China Postcode: 100080
Tel: +86-10-5887-6566,6567
Fax: +86-10-5887-6568
Email: office@beijing.u-tokyo.ac.jp

University Data

Undergraduate Enrollment

(as of May 1, 2014)

Division	Faculty	Regular Students		Research Students	Auditors	Total	
Junior	College of Arts and Sciences	6,643	136			6,643	136
Senior	Law	956	3		12	968	3
	Economics	772	19		2	774	19
	Letters	864	11	4		868	11
	Education	209	1	8		217	1
	Arts and Sciences	433	7	8	1	441	8
	Engineering	2,141	51	17	3	2,172	54
	Science	647	7	2		649	7
	Agriculture	648	1	5		653	1
	Pharmaceutical Sciences	184	6	2	1	186	7
Medicine	506	2	20	1	526	3	
Total		14,003	244	66	6	14,097	250

Note: Figures in red indicate the number of international students.
Special Auditing Students and credited auditors are not included.

Graduate Enrollment

(as of May 1, 2014)

Graduate School	Regular Students					Research Students etc.		Total		
	Master's	Professional	Doctoral							
Law and Politics	31	18	546	2	84	35	14	14	675	69
Public Policy			262	92					262	92
Economics	165	50			105	8	7	2	277	60
Humanities and Sociology	310	41			436	72	37	30	783	143
Education	185	7			248	34	11	8	444	49
Arts and Sciences	565	80			766	132	68	50	1,399	262
Interdisciplinary Information Studies	200	45			180	51	18	17	398	113
Frontier Sciences	859	107			505	124	21	17	1,385	248
Engineering	2,053	337	19		1,066	451	112	92	3,250	880
Information Science and Technology	472	39			178	48	26	24	676	111
Science	724	35			658	42	20	10	1,402	87
Mathematical Sciences	99	10			93	10	2	2	194	22
Agricultural and Life Sciences	573	55			435	130	52	37	1,060	222
Pharmaceutical Sciences	200	13			175	19	5	1	380	33
Medicine	139	27	53		961	64	30	15	1,183	106
Total	6,575	864	880	94	5,890	1,220	423	319	13,768	2,497

Note: Figures in red indicate the number of international students.
Special Auditing Students and credited auditors are not included.

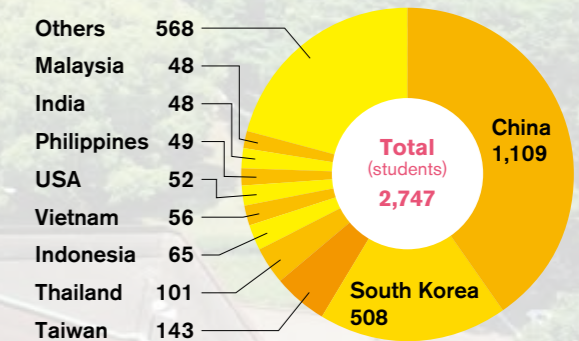
Academic Staff

(as of May 1, 2014)

Professors	1,322
Associate Professors	902
Lecturers	260
Research Associates	1,372
Research Assistants	44
Total	3,900

International Students Countries and Regions

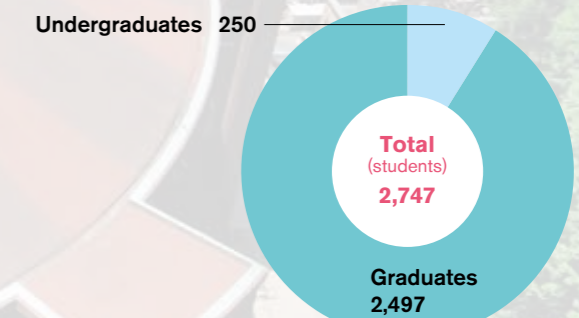
(as of May 1, 2014)



*Special Auditing Students and credited auditors are not included.

International Students

(as of May 1, 2014)



*Special Auditing Students and credited auditors are not included.
*Eight international students registered in the affiliated institutes are not included.

Editorial Committee

Prof. Hiroshi Marui*	Graduate School of Humanities and Sociology
Prof. Hitoshi Aida	Graduate School of Engineering
Prof. Takeshi Wada	Graduate School of Arts and Sciences
Prof. Mari Inaba	Graduate School of Information Science and Technology
Midori Ozawa	International Planning Group
James JH Fegan	International Planning Group
Masato Fukushi	International Exchange Group
Taro Togo	International Students and Researchers Support Group
Mana Miura	Public Relations Group
Hiroshi Arino	Education and Student Support Department
Mayuko Nakai	International Planning Group

*Committee Chair

