

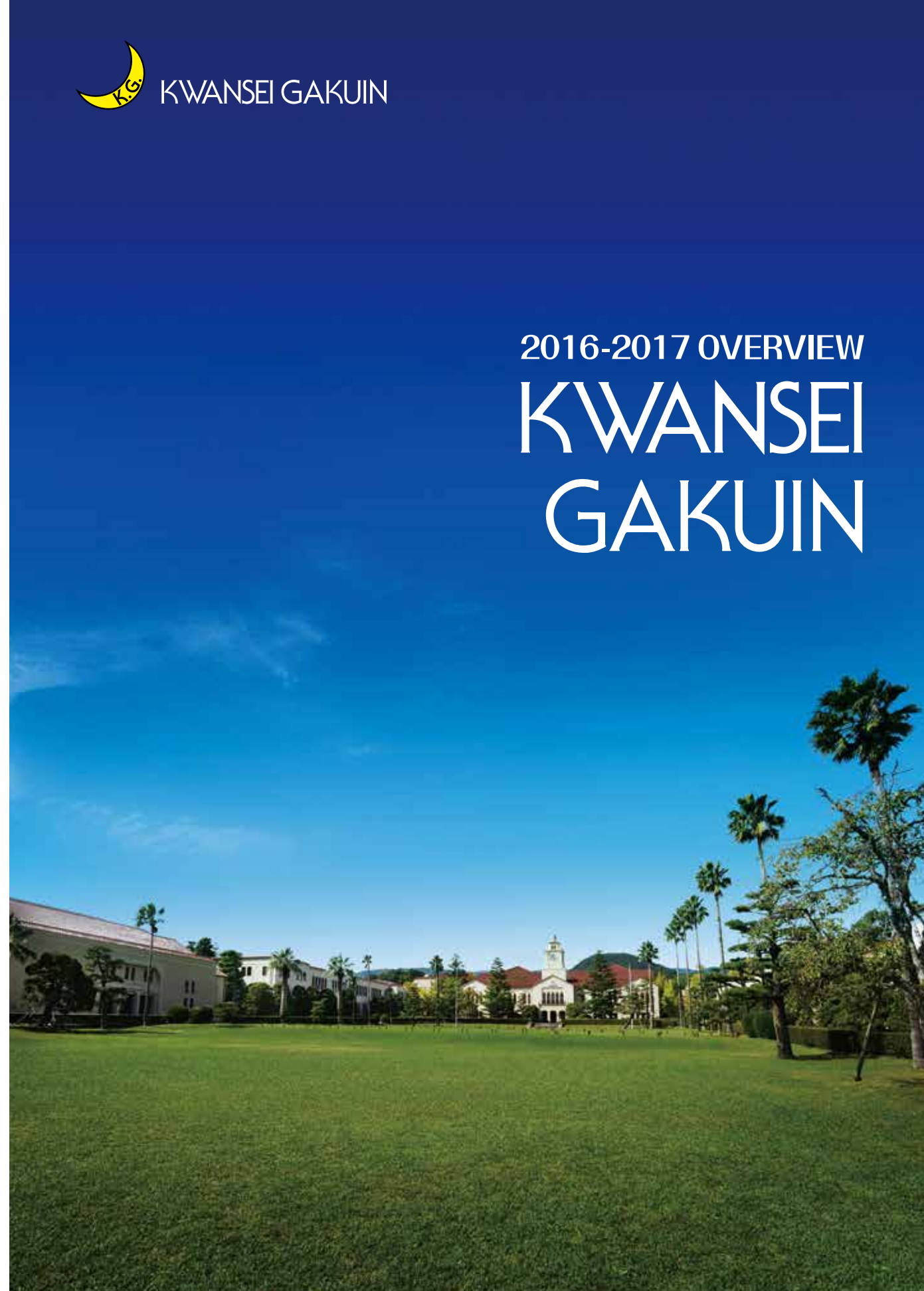


**KWANSEI GAKUIN EDUCATIONAL FOUNDATION, JAPAN**  
<http://global.kwansei.ac.jp>

Nishinomiya Uegahara Campus : 1-155 Uegahara 1ban-cho Nishinomiya Hyogo 662-8501 : TEL.+81-798-54-6017  
Nishinomiya Seiwa Campus : 7-54 Okadayama Nishinomiya Hyogo 662-0827 : TEL.+81-798-54-6500  
Kobe-Sanda Campus : 2-1 Gakuen Sanda Hyogo 669-1337 : TEL.+81-79-565-7600  
Osaka Umeda Campus : Applause Tower, 19-19 Chaya-machi Kita-ku Osaka 530-0013 : TEL.+81-6-6485-5611  
Tokyo Marunouchi Campus : Sapia Tower, 1-7-12 Marunouchi Chiyoda-ku Tokyo 100-0005 : TEL.+81-3-5222-5678  
Takarazuka Campus : 6-27 Mukogawa-cho, Takarazuka Hyogo 665-0844 : TEL.+81-797-81-5500  
Senri International Campus : 4-4-16 Onohara Nishi Mino-shi Osaka 562-0032 : TEL.+81-72-727-5050

**Contact Information**  
Center for International Education and Cooperation : TEL.+81-798-54-6115

# 2016-2017 OVERVIEW KWANSEI GAKUIN





## Mission Statement

**Kwansei Gakuin, as a learning community based on the principles of Christianity, inspires its members to seek their life missions, and cultivates them to be creative and capable world citizens who embody its motto, "Mastery for Service," by transforming society with compassion and integrity.**

## School Motto "Mastery for Service"

**"Mastery for Service," the school motto of Kwansei Gakuin reflects the ideal for all its members to master their abundant God-given gifts to serve their neighbors, society and the world.**



*"...But having become masters we desire not to inflate, and enrich ourselves for our own sake, but to render some useful service to humanity in order that the world may be better for our having lived in it. ...Our ideal of the scholar is ... (one) whose desire for knowledge is a desire to equip himself to render better service to humanity. ..."*  
(C.J.L. Bates, 1915)

Kwansei Gakuin's school motto, "Mastery for Service," was proposed by the fourth Chancellor, Dr. C.J.L. Bates (1877–1963). Since being first introduced in 1912, it has been sung in the school song, "Sora no Tsubasa (Wings of the Sky)," and is carved into the emblem on the clock tower, endured war and campus disputes, and continues to be repeated to the present day as a truly descriptive expression of Kwansei Gakuin's stance.

A "master" usually means someone who directs or commands others, but at our school, it means a person who, in terms of humanity, learning, and daily life, has an accomplished character, or as Dr. Bates said, is a "Self-Master." From that base, "service" is understood, in our school's Christian context, as "service to God," the starting point for a life dedicated to serving neighbors, society, and others.

A way of life that is devoted to creating a better world by utilizing one's inalienable gifts; that is the ideal that we members of Kwansei Gakuin continue to seek as we sing in the school song, "Shining freedom, Mastery for Service."

## CONTENTS

2 Mission Statement and School Motto	28 Group Learning Space
3 The Schools of Kwansei Gakuin	29 Life Design & Job Placement
4 Message	30 KGU Graduate Schools
6 New Strategic Plan	33 KGU Undergraduate Schools
7 The Structure of Kwansei Gakuin	36 KG Kindergarten, Elementary School, Junior High School
8 Vories Architecture	37 Senior High Schools, Junior College, International School
9 Top Global University Project	38 Organization Chart
10 School of International Studies	40 Fact Sheet
14 Degree Program Taught only in English	44 Public Relations of Kwansei Gakuin
16 International Activities	45 Campus Life Photos
24 Education	46 Around University Guide
25 Research	



## Kwansei Gakuin, a comprehensive and integrated educational institution

Kwansei Gakuin is one of the most prestigious private schools in Japan, which was founded in Kobe in 1889 by the American missionary Reverend Walter Russell Lambuth.

Kwansei Gakuin is a comprehensive and integrated educational institution with a university, junior college, senior high school, junior high school, elementary school and kindergarten. It has seven campuses: Nishinomiya Uegahara, Nishinomiya Seiwa, Kobe-Sanda, Osaka Umeda, Tokyo Marunouchi, Takarazuka, and Senri International.



### Reverend W.R. Lambuth, the Founder of Kwansei Gakuin

Kwansei Gakuin was founded in 1889 by the American missionary Reverend Walter Russell Lambuth with the aim of training missionaries and educating young people based on Christian principles. After working in China as a missionary doctor, Reverend Lambuth came to Japan to spread Christianity in the country.

He was a missionary and educator in all continents except the Antarctica and Australia, even venturing as far as the Congo in Africa. Reverend Lambuth said, "Foster citizens of the world who are disciples of Christ," and he lived these words by dedicating his life to being a global servant.

### The school Emblem -the Crescent Moon

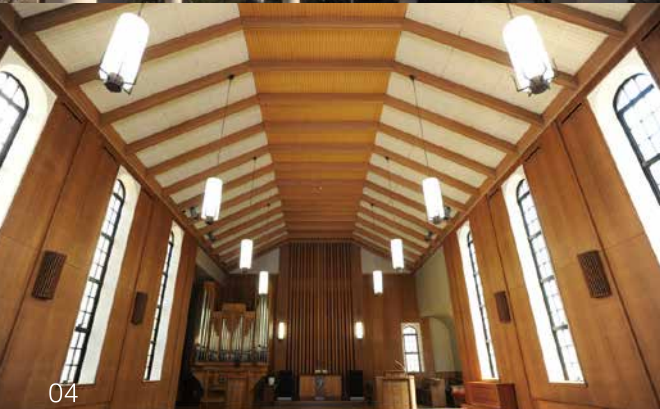
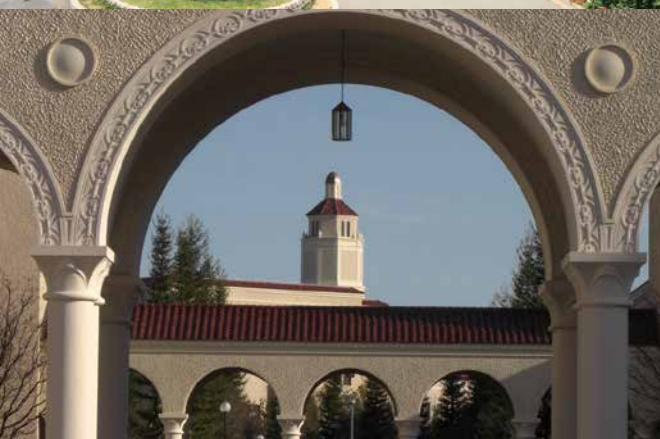
The school emblem represents Kwansei Gakuin student's daily journey on the path to growth, as a crescent moon gradually grows to become a full moon. It also represents Kwansei Gakuin students and graduates who take God's blessings and spread them like a shining light around the world, much as the moon reflects the sun's rays to light up the dark night.



### School Song : "Wings of the Sky"

Our school song, Wings of the Sky, was created in 1933 by a Kwansei Gakuin alumnus and one of Japan's most renowned composers, Kosaku Yamada, and the poet Hakushu Kitahara. It is still sung today by countless students and graduates.





**Akira Miyahara,  
Chair of the  
Board of Trustees**

Since its founding in 1889, Kwansei Gakuin has consistently taught one thing: the fundamentals students need to live a meaningful human life, built on the foundation of the liberal arts philosophy and the teachings of Christianity. If we can instill in students thoughtfulness and kindness for others, ethical values, and the ability to understand with clarity and accommodate with flexibility the changes of their era and society, those skills should prove particularly useful today.

At the same time, although today we live in an environment that is characterized by a chaotic mixture of a variety of phenomena, from predictions of a wonderful future to conflict and other difficulties, all of those currents highlight the interconnectedness of the world and the simultaneous manner in which events now unfold. Ours is no longer an era in which the internationalization of the few is sufficient, but rather one in which all people are involved as stakeholders. Consequently, it is necessary to endow the students who gather at Kwansei Gakuin with an international outlook and a cosmopolitan character.

Thanks to such developments as the 2014 selection of Kwansei Gakuin University and Kwansei Gakuin Senior High School for inclusion in the Top Global University Project and the Super Global High School project, respectively, and the 2015 selection of Senri International School of Kwansei Gakuin for inclusion in the latter program, Kwansei Gakuin as a whole now has a chance to put in place an environment that is conducive to internationalization. Going forward, we will dedicate ourselves to fostering the development of global citizens who embody the ideals of "Mastery for Service" by creating a "home port" for a richly international program of academic exchanges in which students and faculty members from Japan and overseas frequently travel back and forth and collaborate with one another.

The entire faculty will continue to pursue a variety of initiatives to foster the development of leaders who readily embrace challenges based on a shared vision for a Kwansei Gakuin that is made up of people of outstanding character and international outlook.

Akira Miyahara is an alumnus of Kwansei Gakuin University's School of Business Administration. He has previously held the positions of President and Representative Director and Vice Chairman and Representative Director of Fuji Xerox Co., Ltd. He has also worked as the Chairman of the Keizai Doyukai (Japan Association of Corporate Executives), the Chairman of Tokyo Woman's Christian University, and the Vice Chairman of the International University of Japan amongst other roles. He has been the Chair of the Board of Trustees since April 2013.



**Musubi Tabuchi,  
Chancellor**

Kwansei Gakuin is a fairly large learning and research community with 27,000 students from kindergarten through undergraduate and graduate levels, as well as International School (K-12), at a total of seven campuses—two in Nishinomiya along with Sanda, Takarazuka, Senri, Osaka, and Tokyo. When the parents and guardians of those students and our more than 200,000 alumni are included, that community extends throughout the world.

At the time of its founding 127 years ago, Kwansei Gakuin had just 19 students. Nonetheless, the school conceived by Walter R. Lambuth, the missionary who served as Kwansei's first chancellor, was a global one, just like today's Kwansei Gakuin. For him, it was not the institution's size, but rather the global perspective that shaped its studies that was important. He returned to the United States two years after founding the school and subsequently worked in locations including South America, Europe, Africa, and Siberia, earning the description on a monument in Mississippi that memorializes him as a "World Citizen and Christian Apostle to many lands."

All schools of Kwansei strive to endow their students with an awareness of being part of the larger world. When he created the school motto of "Mastery for Service," C.J.L. Bates, the school's fourth chancellor, wrote of his wish to "render some useful service to humanity in order that the world may be better for our having lived in it" (C.J.L. Bates, *Mastery for Service*, 1915).

Everyone connected by Kwansei Gakuin is an important member of a community that is united in its dedication to making the world better. It is our hope that we will be able to achieve a better society that expresses the uniqueness and excellence of humankind. *We are Kwansei!*

Musubi Tabuchi is the 16th Chancellor, Head of the Senior and Junior High Schools, Head of the Elementary School and Supervisor of the Senri International Campus of Kwansei Gakuin. He is Professor of the School of Education in Kwansei Gakuin University. After graduating from the Kwansei Gakuin University School of Humanities and the School of Theology, he studied abroad in the doctoral program at the Graduate School of Biblical Studies, King's College, London, where he majored in Old Testament studies. He has been Chancellor since April 2016.



**Osamu Murata,  
President**

Dr. C. J. L. Bates, the fourth chancellor of Kwansei Gakuin, established the school motto "Mastery for Service" based on the founding principles of the institution. After introducing this motto in his statement, he said, "We do not desire to be weaklings. We aim to be strong, to be masters," urging his students to be strong for their self-culture, and to train themselves to be strong not only for their own sake, but also for all humanity.

So, what should you do for your self-culture during your college days?

One thing you should do is to become aware of what problems are. To determine the presence of problems in a certain event, you should have your own standards. In other words, you should have your own view of the world. Learning at university prepares you to form your own view of the world.

Another important thing you should do is master the basics that will enable you to keep learning even after graduation. Rapid changes are taking place in the world, and what you learn at university soon becomes obsolete. You should always try to continue acquiring new knowledge and information. To that end, it is extremely important for you to acquire scientific thinking skills to draw conclusions by making scientific investigations in your field of specialization.

To form your own view of the world and acquire scientific thinking skills, you need persistent learning and constant practice. Continuous learning and practice require considerable effort and patience. I hope that through relentless learning and practice you train yourselves and grow into world citizens who embody our school motto "Mastery for Service."

Osamu Murata is a Professor of Kwansei Gakuin University's School of Economics. He received a Ph.D. in Economics from Kwansei Gakuin University. His area of study is the macroeconomics, in particular business cycle theory. He has been the President of Kwansei Gakuin University since 2014.

# New Strategic Plan

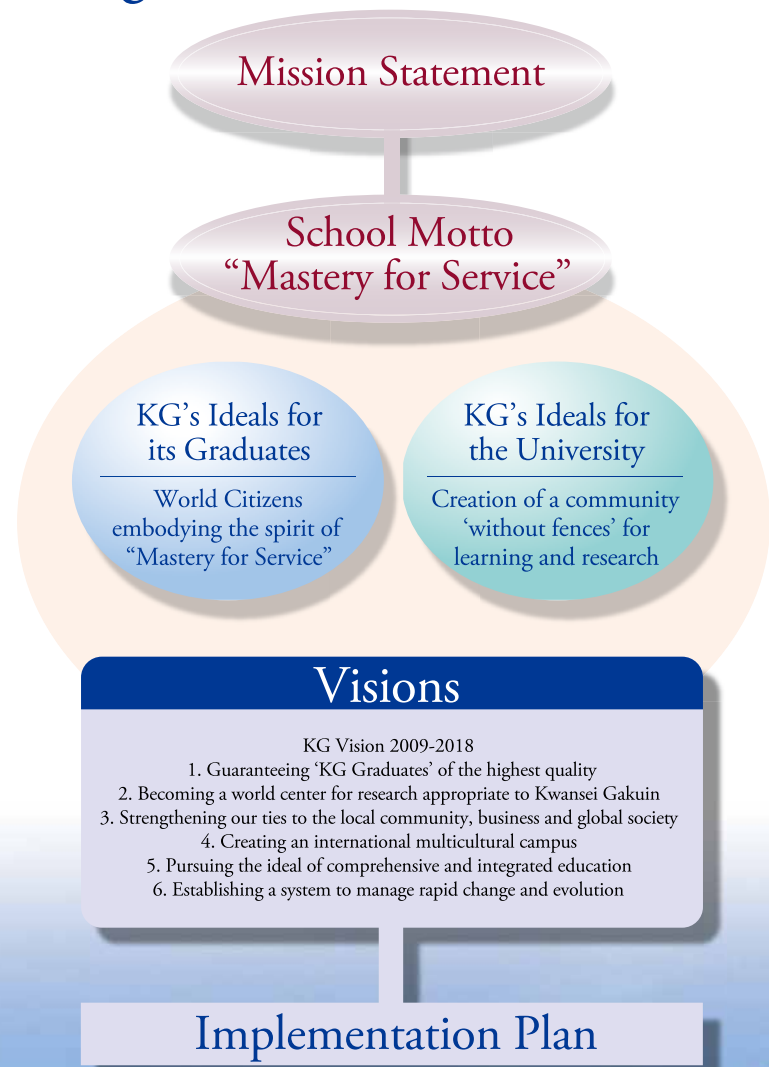


## Kwansei Gakuin New Strategic Plan (2009-2018)

Kwansei Gakuin established a New Strategic Plan for the next 10 years in 2008. This plan reconfirms the 'Mission' and the school motto "Mastery for Service" that all members of Kwansei Gakuin have held in common over its long history, and sets out clearly the ideals for our graduates, and the ideals for Kwansei Gakuin University.

These were brought together to form a vision of Kwansei Gakuin 10 years hence (2009-2018), together with the strategies required to realize this vision.

## New Strategic Plan



# The Structure of Kwansei Gakuin

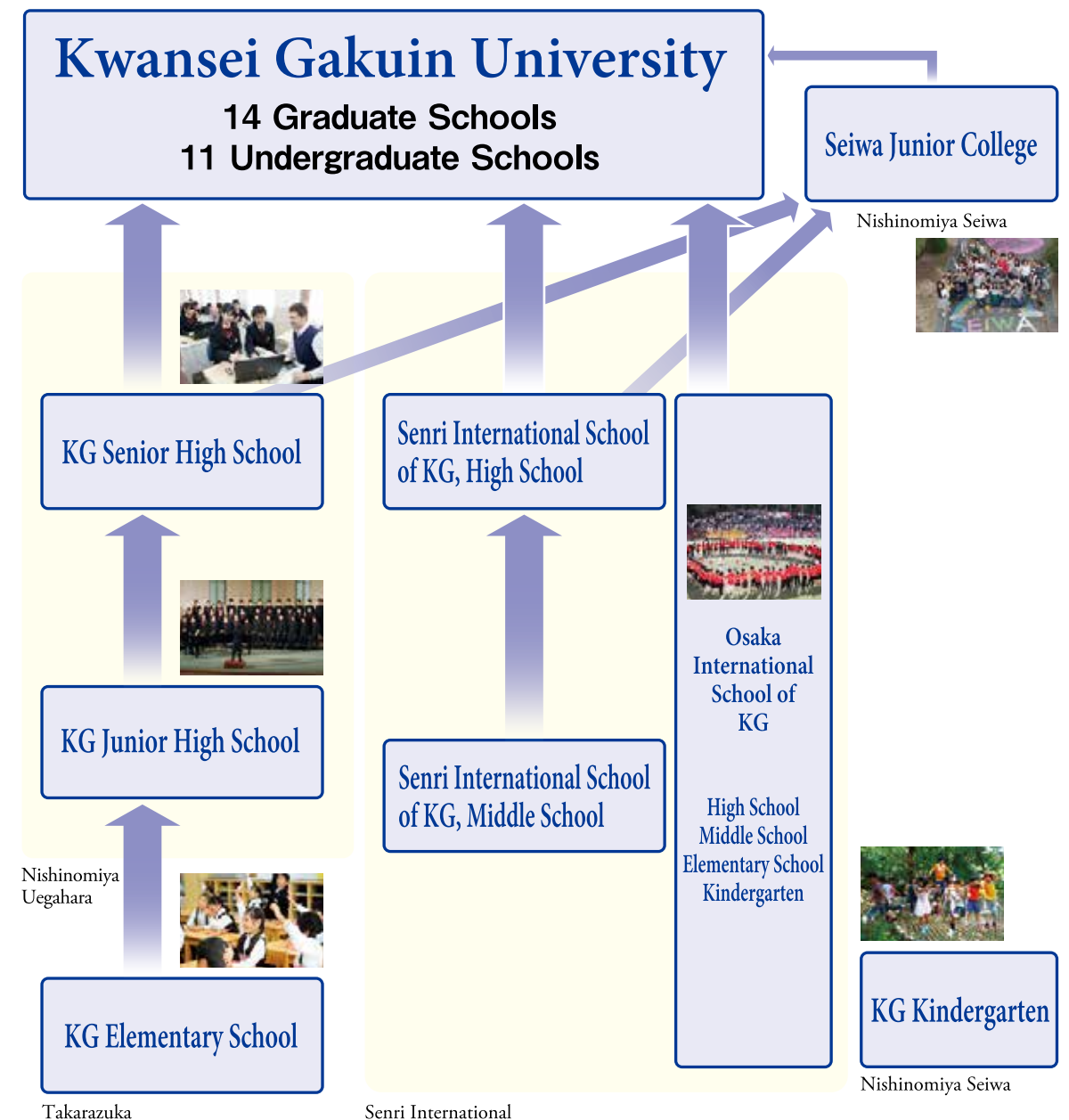


## An international campus where multiple cultures coexist

Kwansei Gakuin provides unified education from pre-school to postgraduate level

Located in Hyogo Prefecture, Kwansei Gakuin is a comprehensive educational institution that provides a kindergarten, elementary school, junior and senior high schools, junior college, university, and graduate school. It also administers the Senri International Schools of Kwansei Gakuin (Middle School and High School) and the Osaka International School of Kwansei Gakuin in Osaka Prefecture, and is advancing as a comprehensive educational institution with an international outlook.

## Nurturing world citizens who embody our motto of "Mastery for Service"





Kwansei Gakuin was designed by the famous architect William Merrell Vories. Built in the Spanish Mission Style with its uniform white walls and red brick roofs, the beautiful campus is one of the university's most vaunted assets. The images below show the changing face of the campus through the seasons.



## Prioritizing Quality to Become a Respectable 'Top Global University'

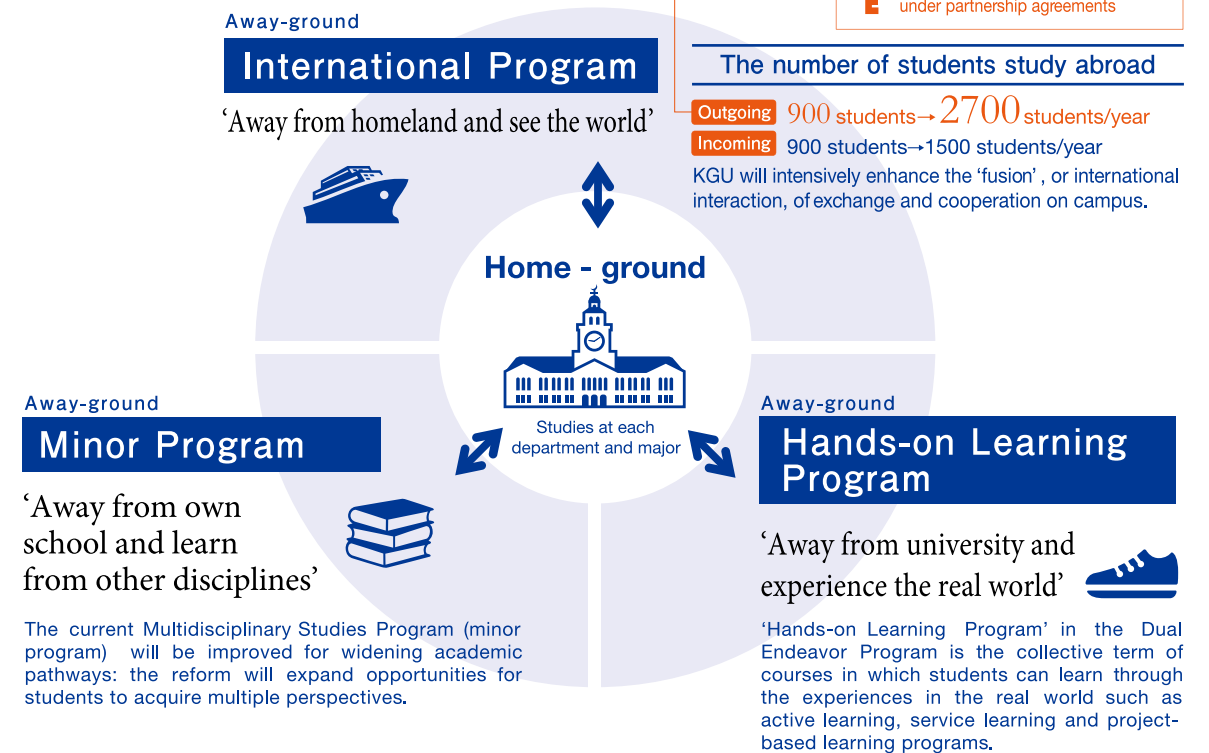
### Establishing the Global Academic Port

The 'Global Academic Port' initiative is the University reform plan for establishing a homeport in which academic exchanges take place, by students, faculty and staff, both local and international, to enable the cultivation of world citizens who embody Kwansei Gakuin's school motto 'Mastery for Service'. The initiative has been funded by the Ministry of Education, Culture, Sports, Science and Technology in Japan (MEXT) under the Ministry's 'Top Global University Project (2014-2023)'. Through the implementation of this initiative, KGU is aiming to be a respectable 'Top Global University'.

### keyword1 Introducing the 'Dual Endeavor Program' – A New Educational 'Operating System'

All students cultivate competences such as self-sufficiency, fortitude, and understanding of diversity through programs in the 'away-ground'.

keyword2  
Becoming Japan's No.1 university in number of students studying abroad under partnership agreements



### keyword3 Gateway to the United Nations and international organizations

KGU will systematically offer programs for cultivating future diplomats and staff of the United Nations, other international organizations, international cooperation agencies and NGOs.

### keyword4 Establishing a quality assurance system that meets international standards

### keyword5 Establishing a comprehensive management system through governance reform

## KGU Internationalization

### Becoming a Member of Learning Community

The Kwansei Gakuin University School of International Studies was only founded in 2010. However, our hope is that the School could become a new vessel for the spirit of Kwansei Gakuin founder W.R. Lambuth, whose mission was to train people who would dedicate themselves to service as world citizens, and for Kwansei Gakuin's more than 120 years of history and tradition so that those twin legacies might continue to live on.

In contemporary society, all things, including people, goods and services, money, and information, move freely across national borders. And not just across national borders—it seems certain that we will live in a world where the meaning of the word border has changed dramatically from the last century. As people who live in an era in which borders have been transcended, we encounter numerous people whose backgrounds differ from our own. We must properly understand how those people differ from ourselves while respecting their ways of thinking, and we must find ways to effectively accomplish things together with them.

The School of International Studies strives to train graduates who can master and draw on general skills to live in a borderless era, and to that end we have put forth a curriculum policy designed to facilitate a multifaceted and comprehensive mastery of problem-solving skills, tenets of multicultural coexistence, ethical values, and language proficiency.

More specifically, we emphasize small-sized basic seminar classes during the first year of study. These courses provide robust training in the ability to think and express oneself logically while emphasizing language education. Language study is an essential tool for understanding people with different cultural backgrounds and accomplishing shared goals in partnership with them. The program continues during the third and fourth years with research seminars, study abroad, and internship-style courses, which we plan to expand in the near future, in order to refine those skills in a comprehensive manner.

Our program provides a broad range of content in humanities and social sciences organized around three fields of study—cultures and languages, societies and politics, and economics and management—while giving students the ability to study each area according to their own interests. Some may see this approach as allowing only a shallow degree of specialization. However, by piecing together these elements from a horizontal study it is possible to create and put into practice knowledge that is not inferior to a vertically deep study of more restricted breadth. I want students to have the courage to study a broad array of disciplines. In addition, it goes without saying that we also provide a scholarly path that suits students who seek a deeper study of a single field.

It is especially necessary for students who study in the School of International Studies to foster in their hearts an understanding of the fact that all people differ and to maximize their respect of that fact. Some people excel in their ability to master language, while others exhibit outstanding ability in logical thinking. Others have a personality that allows them to immediately open their hearts to anyone. All people do not share the same skills and abilities, nor should they. What is most demanded in this borderless era is the ability to understand that you and others have different strengths and to have the desire to enjoy collaborating in a way that draws on the strengths of each. The School of International Studies has a truly diverse student body that has come to the school by way of a variety of entrance examination options. This diversity is the School's greatest advantage.

The School's faculty members are also diverse and distinctive. Even as I am in the position of teaching students as part of the faculty, I continue a lifelong process of learning together with students insofar as I share the same search for knowledge. In that sense, I see faculty and students as partners in a community of learning. Rather than simply learning in a passive manner from a diverse and distinctive faculty, I want students to value the spirit of mutual learning and refinement in the context of this community. May we share our time together and take advantage of it to grow together. That is our greatest joy.



Kyoichi MARUKUSU, Ph.D.  
Dean, School of International Studies.

### School Objectives

The general objective of the School of International Studies (SIS) is to equip students with the ability to understand and analyze issues relating to international affairs. The specific objectives for international students are to enable them to achieve a good command of the Japanese language, to provide perceptual skills in looking at the world through an interdisciplinary approach which combines the humanities and the social sciences, and to encourage students to examine Japan and the world with historical and contemporary insights, using the following three approaches: cultures/languages, societies/politics and economics/management. Students select their region of emphasis, which is either North America or Asia including Oceania. The SIS seeks to provide an environment that fosters an international attitude and a deep understanding of the world, while encouraging its members to grow in maturity through the teaching of Christian principles, and training students to become world citizens with an international spirit, broad perspective and flexibility.



### Student Voices

I chose KGU because of the new and unique faculty of the School of International Studies, which includes different majors, as well as the possibility of graduating in English. Attending this faculty, I feel special as I get to experience various things. I am able to make friends from different national backgrounds, not only from Asia but also from Africa, America and Europe, and this is an amazing thing for my friends studying in my home country who lack this opportunity. I am exposed to different ideas and diversified opinions, which work as a bridge for me to understand various situations from different perspectives.

I am enjoying my campus life very much. This campus provides a sense of unity in a diverse environment, including helpful professors and excellent study facilities. Because of all of this, I love being a part of it. I really feel the positive changes in myself and I can proudly say that this is because of the motivating environment at KGU.

In the future, I am planning to work for a company that respects diversity and connects me with my home country and Japan. I want to use the skills that I learned at KGU and become a practical global citizen respecting other cultures. I am glad that I chose the school of International Studies at KGU.

#### PUJA KHAREL

Graduate of the school of International Studies

From Prerana Higher Secondary English Boarding School, Republic of Nepal



I chose Kwansei Gakuin because it was one of the few universities in Japan with a new department of international studies (SIS) that had English courses in line with my field of interest, from which I had hoped to utilize all the hidden opportunities in me and also study the diversified environment, to become a global citizen. The fact that I had some Ugandan seniors already at this department whose stay at the university had greatly changed them into strong, admirable world leaders. I always felt so proud of what kind of people they had become after joining KGU, therefore joining this school was a dream come true.

Since I joined KGU, I have had an amazing experience. I have been impressed with how students learn from the caring professors who give opportunity to every student at anytime in such a beautiful natural environment. I am now enrolled in two multicultural clubs from which I am able to improve my Japanese Language through talking to Japanese friends, and also deepen my knowledge about the world. I have been inspired by the community at this school which is always eager to learn from my culture. This makes me happy because I also get to learn from them. More to that, there has been an open opportunity for me to challenge new things in my life which I am so happy about.

From the education I attain at Kwansei Gakuin university, I have come to appreciate many cultures, most especially the Japanese culture, through the language and art. I therefore would like to use this experience to make a big difference to my country as I work with cultural developmental projects with the connections I have got while at KGU.

#### Pius SENOGA

3rd-year student in the School of International Studies,

From St. Augustine's College Wakiso, Republic of Uganda



## Entrance Examination for International Students

Examination Type	Student Intake	Eligibility	Examination	Application Period	Examination Date	Result Announcement
Domestic Admission	September Examination: 5	Students whose first language is English or who are competent in English	1. Essay writing (English)	Friday, August 26 to Friday, September 2, 2016	Friday, September 14, 2016	Friday, September 30, 2016
	December Examination: 5		2. Oral Examination (English)	Monday, October 31 to Friday, November 11, 2016	Saturday, December 3, 2016	Friday, December 9, 2016
Overseas Admission	5		Oral Examination through long-distance communication technology (English)	Tuesday, October 11 to Friday, November 11, 2016	Saturday, December 3, 2016	Friday, December 9, 2016

The details are available at: [http://global.kwansei.ac.jp/academics/academics\\_203361.html](http://global.kwansei.ac.jp/academics/academics_203361.html)

## Curriculum

Field	Course Title		
Christian Studies	Christianity A, B		
Language	Japanese I~IV, Japanese IV~VI (LS), Japanese IV~VI (RW), Japanese VII~VIII (Presentation), Academic writing A, B		※LS: Listening, Speaking ※RW: Reading, Writing
International Studies Foundation Courses	<b>【Basic Courses】</b> Introduction to Applied Linguistics Language and Culture in Japan A Language and Culture in Japan B Japanese Linguistics	Japanese Politics and Diplomacy Introduction to International Relations Introduction to Political Science Introduction to International History International Security Introduction to International Law Special Topics in International Studies A・B・C Introduction to Quantitative Analysis	Introduction to Economics Japanese Economy Business Ethics Introduction to Financial Accounting Basic Management Computer Practice Introduction to ASEAN: Society, Economy, and Politics A Introduction to ASEAN: Society, Economy, and Politics B
	<b>【Practical orientation】</b> Basic Seminar A / Basic Seminar B		
International Studies Advanced Courses	<b>【Cultures/Languages】</b> Japanese Religion Contemporary Multicultural Societies Religion and Culture in Europe Japanese Poetry Japanese Phonetics and Phonology Politeness in Japanese and English Sentence and Meaning in Japanese Japanese Art A/ Japanese Art B Traditional Japanese Theatre/ Japanese Cinema The Geography of Japan A/ The Geography of Japan B Japanese Psychology A/ Japanese Psychology B Japanese History A/ Japanese History B Religious and Traditional Rites Special Topics in Japanese Studies A Special Topics in Japanese Studies B Shintoism/ Japanese Pop Culture Japanese Society through Western Film	<b>【Societies/Politics】</b> Japanese Society Minorities in Japanese Society Social Welfare in Japan Special Topics in Japanese Society Government and Politics in Japan / Government and Politics in Japan A・B Japanese Legal System Japan's Foreign Relations Political Economy of Japan The United States and East Asia Global Governance International Relations in Europe International Relations of Japan Theories and Debates in the Studies of International Relations Japan's Emigration Policy and Japanese Immigration Foreign Policy Analysis Environmental Governance in the European Union International Conflicts Topics in International Politics A/B	<b>【Economics/Management】</b> Japanese Business A Japanese Business B Management A Management B Bookkeeping Introductory Japanese Finance Marketing in Japan Innovation and Intrapreneurship International Accounting Financial Reporting and Analysis Advanced Topics in Accounting Introduction to European Economic History Economics and Business Management in Europe Regional Policy in the EU Industrial Policy in the EU Corporate Governance and Industrial Relations in International Perspective Development Economics Innovation and Entrepreneurship Microeconomics Macroeconomics
	<b>North American Studies</b> The Media Culture in North America Cultures in the USA	American Society US Foreign Policy US-Japan Relations Canadian Foreign Policy	US Economy US Innovation System Management in North America Human Resource Management in the USA Marketing in the USA International Management International Finance and Asia-Pacific International Trade and Asia-Pacific
	<b>Asian Studies</b> Traditional Japanese Arts Japanese Outlaws Introduction to Japanese Literature Introduction to Japanese Culture Changing Images of Women Contemporary Korean Studies B The Chinese in Modern Japan Chinese Culture and History Japan-China Relations Religion and Society in the Contemporary World Contemporary Japanese Society and Culture Sociology of Cultures in Transition Contemporary Chinese Society and Culture Introduction to Documentary Film Studies	Prewar Japanese Diplomatic History Prewar Japanese Political History Postwar Japanese Political History Postwar Japanese Diplomatic History Contemporary Korean Studies A Globalization and East Asian Development Contemporary Security Issues in East Asia East Asian Studies Seminar: Directed Research Japan in a Globalizing World International Relations in ASEAN Asia-Pacific Relations Australian Politics International Relations of Australia	East Asian Finance Business-Government Relations in East Asia Special Topics in Chinese Studies Chinese Economy Management in Japan Japanese Financial Practices Japanese Corporate Governance Japanese and Asian Economies A/B
	<b>Advanced Research Seminars</b> Research Seminar I Research Seminar II Graduation Thesis		



SIS Lecture Series 43 by Mr. John V. Roos, U.S. Ambassador to Japan

### Tuition and Financial Aid Tuition and Other Fees

The tuition and other expenses for students matriculating in the 2017 school year have not yet been announced. However, the following figures indicate the approximate admission fee and combined annual total of tuition and all other expenses for the 2016 enrollee.

Admission fee: 300,000 yen  
 First year: 1,065,000 yen  
 Second year onward: 1,288,000 yen

The total above does not include miscellaneous fees as these are subject to change. Once they have been determined they will be posted on our website: <http://global.kwansei.ac.jp>

### Living Expenses

Living expenses vary depending on where and how you live, but here is a general guide to the cost of living for KGU international students living away from home. Living expenses can add up to approximately 120,000 yen per month, 10-20 percent lower than in the Tokyo area.

Housing (apartment)	60,000 yen
Food	30,000 yen
Books	5,000 yen
Recreation/Leisure	20,000 yen
<b>Total</b>	<b>115,000-120,000 yen</b>

Transportation should be added when applicable.

### Scholarships

KGU offers the following financial support for international students.

#### 1) KGU Tuition Reduction for Privately-funded International Students

Under this program, KGU offers a 30 percent reduction of the tuition for privately-funded international students studying at a regular (degree-seeking) undergraduate/graduate course and hold a student visa (ryugaku visa).

The details are available on our website.

#### 2) KGU Scholarship for International Students

To further support promising students who demonstrate excellent academic performance, KGU offers a scholarship which covers 20 percent of the tuition fees in addition to the abovementioned 30 percent tuition reduction.

Further information is available on our website.

# Degree Program Taught only in English



The Graduate and Undergraduate schools of the University offer a number of programs where English is the medium of instruction. Among these are the MBA program of the International Management Course in the Business School, and the Master's program of the International Development Strategy Area in the Graduate School of Science and Technology. The Graduate School of Science and Technology has established a double degree program with Satya Wacana Christian University in Indonesia.

## International Management Course Institute of Business and Accounting:outline

### Global Standard MBA education is available in Japan.

- All classes are taught in English.
- Proportion of international students to Japanese students is approximately 7 to 1.
- Day-time programs are conducted at the Uegahara and Umeda campuses.

### Tailored education is available in the Kansai region of Japan.

- Highly intensive teacher-students interactions.
- Small sized classes, Average class Size:10
- Case discussions, group and individual presentations.
- Individual research.



## SPECIALIZED STUDY PROGRAMS

### MANAGEMENT PROGRAM:

Students explore how managers face critical decisions in generating new opportunities, and building organizational capabilities required for sustaining competitive advantage, through case studies, simulations and interactive discussions.

### MARKETING PROGRAM:

Students are expected to learn in depth how to manage the marketing management process; the planning (plan), execution (do), and control (see) process that is associated with customer-oriented marketing strategies and tactics.

### FINANCE PROGRAM:

Students discuss how financial managers confront critical decisions such as which assets the firm should invest in, how to raise the cash to pay for them, and how much cash they should pay out as dividends to shareholders.

## Curriculum

Core Courses	Basic Courses	Specialized Study programs and Advanced Courses (Basic courses are underlined)			Elective Courses
		MANAGEMENT PROGRAM	MARKETING PROGRAM	FINANCE PROGRAM	
<Compulsory courses> 4 credits Business Ethics (2) English Communication (2) <Selected compulsory courses> 6 credits Management (2) Accounting for Decision Making (2) Business Economics (2) Statistics (2)	<Compulsory courses> 2 credits Having chosen a Specialized Study Program, students must take the Compulsory course (2 course credits) in that Program *. <Selected compulsory courses> 8 credits Making Ethical Decisions (2) Corporate Strategy (2) Designing Organizational Systems (2) International Management (2) Leadership and Corporate Renewal (2) Marketing Management (2) Marketing Strategy (2) Principles of Finance (2) Corporate Finance (2) Financial Reporting and Analysis (2) Cost and Management Accounting (2) Japanese Economy (2) Advanced English for Business Studies (2) Advanced English for Business Practice (2)	*International Management (2) (Compulsory) <Compulsory courses> 6 credits Group Research Project (2) Individual Research (4) <Selected compulsory courses> 12 credits Technology Management (2) Cross-Cultural Management (2) Organizational Behavior (2) Human Resource Management (2) Business Negotiation (2) Information Management for Decision Making (2) Product Innovation (2) International Marketing Practice (2) International Accounting (2) Management Information Systems (2) Management Information Systems (2) Japanese Business (2) Practitioner Perspectives on Management (2) Advanced Topics in Business A~F (2 each)	*Marketing Management (2) (Compulsory) <Compulsory courses> 6 credits Group Research Project (2) Individual Research (4) <Selected compulsory courses> 12 credits Technology Management (2) Cross-Cultural Management (2) Marketing Research (2) Marketing Case Analysis (2) International Marketing Practice (2) Brand Management (2) Marketing Communication (2) Service Marketing (2) Special Topics in Marketing (2) Management Information Systems (2) Industrial Organization (2) Japanese Business (2) Practitioner Perspectives on Management (2) Advanced Topics in Business A~F (2 each)	*Principles of Finance (2) (Compulsory) <Compulsory courses> 6 credits Group Research Project (2) Individual Research (4) <Selected compulsory courses> 12 credits Cross-Cultural Management (2) Financial Risk Management (2) Financial Institutions Management (2) Capital Markets (2) Portfolio Management (2) Corporate Restructuring (2) International Accounting (2) Strategic Management Accounting (2) Asian Financial Market (2) Japanese Financial Practice (2) Accounting Theory and Practice (2) Special Topics in Finance (2) Management Information Systems (2) Japanese Business (2) Practitioner Perspectives on Management (2) Advanced Topics in Business A~F (2 each)	Additional courses, carrying a further 6 credits, to be selected from the Core, Basic and Advanced Courses list. /Courses available at Corporate Strategic Management Course
10 credits	10 credits	44 credits			6 credits

## International Master's Program

The Graduate School of Science and Technology at Kwansei Gakuin University has a Master's Degree Program which has all-English curriculum in the field of physics, chemistry and bioscience.

The aim of the programs is to keep pace with globalization and expose our students to state-of-the-art technology with up-to-date research applications. We would like to harness the potential of outstanding research. This is an international program that emphasizes on research that directly benefits society and the environment. Students are expected to enroll in this program in order to obtain Master's degrees. An extended program for Doctor's degrees is also offered.

## Features of the Program

- Students will undertake research work in a laboratory with their basic modules. Through these modules, students will acquire further comprehensive understanding in physics, chemistry, and bioscience. From their research, they will build up critical analytical skills to design and execute their project.
- From this program, students will also be taught how to give oral presentations, and improve academic writing skills.
- The program is designed to foster students to be researchers with the ability to conceive innovative ideas by synthesizing knowledge from different disciplines and the skills for devising research plans for realizing ideas.
- In this program, students shall choose a laboratory and undertake research work under his/her supervisor.
- Requirements for completion of the program: Completion of assigned research work, basic course modules, acceptance of the Master's thesis, and passing the final examination.
- Degree: Master of Science and Technology.

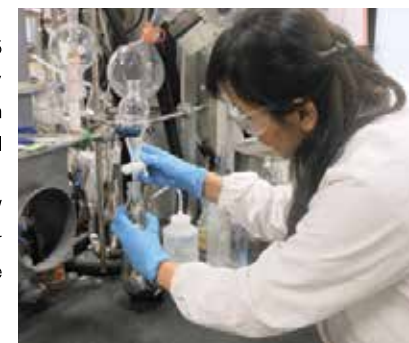


## Double Degree Program with Partner Institution in Indonesia

In 2007 the Graduate School of Science and Technology established a twinning program (under which two graduate schools jointly issue a master's degree) with Satya Wacana Christian University (UKSW), a partner institution in Indonesia. The Indonesian government provides scholarships to outstanding students and has established the PIIC program to encourage high-level study in nine designated fields, including nanotechnology, biotechnology, and information engineering. Fifteen universities in Indonesia have been designated to participate in this program at the master's level. Among these, UKSW is the only private institution, where approximately 25 persons are currently conducting research on chlorophyll and natural pigments. Under the KGU-UKSW twinning system, after one year of study in the PIIC program at UKSW,

students can transfer into the second year of the predoctoral (master's) course of the Graduate School of Science and Technology at KGU.

The admittance period is one and a half years, and approximately three applicants are accepted each year. Students who complete the course are awarded a Master of Science degree (in Integrated Science and Technology) by KGU, as well as a master's degree by UKSW. This program enables students to earn a master's degree from both KGU and UKSW in a total of two and a half years.



## Programs in cooperation with the UN and the EU

International cooperation is part of the culture of Kwansei Gakuin. KGU will continue to strengthen its ties with the UN, the EU, and other international organizations to realize its mission, to inspire its members to seek their own mission in life, and to cultivate them to be creative and capable world citizens who embody the Kwansei Gakuin motto, "Mastery for Service".

### United Nations Youth Volunteers

#### First of its Kind - Youth Volunteer Japan Training Center for the UNV Programme

KGU started the dispatch of student volunteers in partnership with United Nations Volunteers (UNV), the first of its kind in Asia, in 2004. Since then, more than 80 students have been dispatched to 24 developing countries including Bosnia and Herzegovina, Ghana, Mozambique, Rwanda, Samoa, and Ukraine. In 2013, a new initiative was signed between KGU and UNV, to establish the Youth Volunteer Japan Training Center for the UNV Programme, which became the hub for training youth volunteers in Japan. Eight universities, Akita International University, Meiji University, Meiji Gakuin University, Osaka University, Rikkyo University, Sophia University, Toyo University, and University of Tsukuba, have participated in the program since 2013. This enables youth volunteers from across Japan to benefit from KGU's vast experience gained over the years training Youth Volunteers prior to their overseas assignments. Nominated Youth Volunteers will receive training at the Training Center, where they will acquire fundamental skills for the five months, of international cooperation in developing nations, in areas such as information and communication technologies, education, campaigning for awareness, and youth aid.



#### Mr. Richard Dictus / Executive Coordinator, United Nations Volunteers

The UN Student Volunteers programme was conducted by UNV and Kwansei Gakuin University for many years, and had significant accomplishments. I am delighted that Asian students including those from Kwansei Gakuin are being dispatched under the UN Youth Volunteers programme, which started in 2013. The UN Youth Volunteers students are involved in a wide variety of activities that attempt to solve serious problems confronting developing countries. I hope that actually working with UN agencies and governments will help them develop various problem-solving and negotiating capabilities, as well as proactiveness. I believe what they achieve by volunteering will definitely be very useful when they start their careers in the future. I think volunteering is a wonderful way to channel the creativity and energy of youth. And, I hope this will lead to global development and peace building.



#### Other Volunteering Opportunities

In addition to the United Nations Youth Volunteers, KGU is implementing plans under the Go Global Japan project awarded by MEXT, to establish the "Active World Citizens Program", which includes other volunteering opportunities. In cooperation with Japan International Cooperation Agency (JICA), the International Committee of the Red Cross (ICRC), and other NGOs and Educational Institutions in developing countries, a 5-month overseas volunteering program is provided to students in the Global Leader Certificate Program.



### Admission of Refugees through Recommendation by the UNHCR

KGU has signed an agreement in 2006 with the Office of the United Nations High Commissioner for Refugees (UNHCR) in Japan whereby it admits three refugees chosen by the UNHCR to the university each year. Students admitted are exempt from all tuition fees. There are many cases of refugees who cannot enter Japanese universities for reasons such as the high cost of tuition and daily living and the difficulty of obtaining a certificate of graduation from schools in their home country. At KGU, our goal is to give these refugees a higher education and the specialized skills necessary to become leaders in contributing to peace and economic progress, working either in Japan or in their home countries. We also want them to study together with Japanese students so that all involved can work together to solve such worldwide problems as persecution and conflict. KGU is seeking donations that will go towards scholarships to support these refugee students.

### UN Seminar

The UN seminar is designed to provide an orientation program for students who aspire to join international organizations such as the United Nations, the Permanent Mission of Japan to the United Nations, and international NGOs. This program is an annual summer seminar held at the UN headquarters in New York, where students sit in on assemblies and receive lectures from UN officials.



### United Nations Academic Impact

KGU has joined the United Nations Academic Impact since September 2010. The Academic Impact is a global initiative that aligns institutions of higher education with the UN in actively supporting ten universally accepted principles in the areas of human rights, literacy, sustainability and conflict resolution.



### EU Institute in Japan, Kansai

The EU Institute in Japan, Kansai (EUIJ Kansai) was established by a consortium of KGU, Kobe University and Osaka University, as a center for international exchange between Japan and the EU, as well as for the pursuit of advanced academic research on the EU, and educational and public relations activities in the Kansai region. Besides offering EU-related courses to KGU students and establishing an EUIJ Kansai Library in the KGU Library, the Institute contributes to better understanding between Japan and Europe through educational, research, and information and exchange activities.

#### Dr. José Manuel Barroso / President, European Commission

I am most impressed with the extensive range of activities of the EU Institute in Japan, Kansai, established in the consortium of 3 distinguished universities, Kobe, Kwansei Gakuin, and Osaka. Ties between EU and Japan are going from strength to strength. Our common values also mean we share an attachment to promoting the rule of law, human rights, democracy and human security around the world. Of course, many of the challenges we are facing in Europe are also faced by Japan: an ageing population, external competition, reconciling economic growth with environmental and social protection, the absence of natural resources, and so on. Given these commonalities, and that Japan is such a likeminded country, couldn't we both benefit by working together more often?



(c) European Union, 2014

We cannot base our prosperity on primary resources and we do not want to base our prosperity on cheap labor. Knowledge is the only factor where Japan and Europe can be competitive in a global world. The time has come to move our relationship up a gear. Only that way will we realize our mutual ambition of a peaceful, environmentally sustainable and prosperous world for all. I count on your contribution, as academics, students, scientists and researchers, and as friends of the European Union, to push us in the right direction.

(Quote from the leaflet of EUIJ Kansai.)

## International Education

### A diverse program to foster world citizens

In order to foster "World Citizens", KGU provides students with a variety of numerous opportunities to study abroad. Agreements with over 182 partner universities and consortia in 39 countries and regions, KGU has a global network providing the basis for the kind of international education that only we can offer.

In 2015, more than 1000 students participated in the following programs:

#### KGU Study Abroad Programs

##### Short-Term Overseas Foreign Language Study

Intensive one-month language study at a partner university during the summer or spring break. Programs for English, Chinese, French, German, Korean and Spanish are available.



##### Semester Abroad Foreign Language Study

Intensive language study for a period of 3-6 months at a partner university. English, French, German, Korean and Chinese language programs are available.



##### Overseas Internship

A 4-week business internship program in Los Angeles during the summer / spring break, and a semester internship program which includes Business English course followed by an internship experience in Sydney.



##### International Student Exchange

A full year or semester of study abroad at a partner university. Students can participate in regular courses, special courses for exchange students or language courses.



##### Overseas Fieldwork

Ten-day introductory field study in developing countries. Participants can expand their understanding of local culture, economy, and politics through observations at local industries, conducting surveys and interviews, and attending related lectures.



##### International Volunteer Program

Five-month volunteer programs including "United Nations Volunteers". Students spend five months on assignment in developing countries to participate in international cooperation projects.



##### International Student Seminar

Four unique programs designed to enhance students' international perspectives: UN Seminar, East Asia Student Encounter (with Indonesia), Japan and Turkey Intercultural Seminar and Canadian Studies Seminar.



##### Cross-Cultural College (CCC)

###### Fostering World Citizens as Future Leaders (Canada-Japan Collaborative Program)

KGU collaborates with three leading Canadian universities – Mount Allison University, Queen's University, and the University of Toronto – in the Cross-Cultural College. This innovative program received financial support from the Ministry of Education, Culture, Sports, Science and Technology (MEXT). "Re-Inventing Japan Project" from AY 2011 to 2015. Although the government funding has ended, KGU will continue to run the CCC programs. Furthermore, starting from Summer Program 2016, the CCC program will be opened to students from KGU's other partner institution as well.

Along with the benefits of acquiring language proficiency and cultural understanding, the program features two core courses for students to participate in internships, and business-related problem-solving activities. An emphasis on student mobility and teamwork provides opportunities to develop international networks, and nurtures active young people to become world citizens and leaders.



## Language Education

Taking language education to the next level

### Strategically expanding from English study to other foreign languages

At the Language Center, we offer intensive programs in advanced English, French, and German in classes with a low student-teacher ratio. We also concentrate on other languages including Chinese, Korean, Spanish, and Italian, all part of efforts that are resulting in a growing number of advanced foreign language education programs each year. In 2001, we established the Graduate School of Language, Communication, and Culture, based in the Language Center. There are eight programs of Linguistic Science, Language and Cultural Studies (American & British studies/ French studies/ German studies/ Chinese studies/ Interdisciplinary Multilingual and Multicultural studies),

Language Education, and Japanese language education. Each School also has its own initiatives. In the School of Policy Studies, there is a specially-developed English program aimed at training students to express their opinions with clarity and confidence. In the School of Science and Technology, there is an English program designed for science majors so that our graduates can be active as scientists on the world stage. In this way we are creating and developing programs matched to the particular needs of each department.

The Intensive English Program

### A small team of highly trained native speakers of English leads the program

The IEP offers two types of courses, required courses and elective courses. The required courses are "Spring Intensive English" and "Intensive English" which focus on broad communicative English skills. In addition to the Intensive English Series, the IEP also offers electives with a variety of levels, topics and skills focus: Skills-based English, Special English Seminar, courses for Multidisciplinary Studies and Project-based Seminar in English. For example, Skillsbased English (Basic) is for students who want a taste of the IEP or need to improve their English level. For students who want to challenge themselves more, there is a series of intermediate and advanced level integrated skills courses in listening/speaking, writing, reading and English for academic purposes. In all IEP courses, a strong emphasis is placed on active participation through group work, pair work, and student-teacher interaction. All instruction is done entirely in English, and regular attendance and homework are required.



## Liaison Offices in Canada and China

In 2009, KGU set up liaison offices at the University of Toronto, Canada, and at Jilin University, China. These offices have been utilized as a support base for KGU students and teachers studying and working at both universities, while at the same time offer a venue for the exchange of research with other local universities.

In 2014, on the occasion of its 125th anniversary, KGU set up a new liaison office at Soochow University, China.



University of Toronto, Canada



Jilin University, China



Soochow University, China

## Study Abroad at KGU

The undergraduate and graduate schools of KGU actively accept international students from around the world for the purpose of promoting the internationalization of their education and research activities. Of the approximately 600 international students studying at KGU as of May 2016, about 170 were exchange students from KGU's partner institutions overseas who are taking courses through the Japan and East Asia Studies Program and KGU regular courses. In addition, the Center for Japanese Language Education offers short-term Japanese language and culture programs in Winter (February) and Summer (July).



## Japan and East Asia Studies Program/Contemporary Japan Program

For nearly 20 years, the Japan and East Asia Studies Program (JEASP) was the exchange program originally implemented at KGU and spurred an incredible growth to the school that eventually led to its selection as a Top Global University by the Japanese government. However, beginning from the 2016 fall semester, the JEASP will be recreated into the Contemporary Japan Program (CJP). It is designed both to explain the realities of Japan, to set it in the wider East Asian context, and to increase awareness of the East Asian region in general. Aiming to promote a better understanding of the cultural, religious, social, economic and political aspects of Japan and its neighbors, the CJP invites selected students from partner institutions around the world to join a program based firmly in the study of the Japanese language and supported by a wide variety of options.

Within this new program, there will be two main tracks: the Japanese Language Track, for students who wish to focus on their Japanese language studies; and the Modern Japan Track, for students who wish mainly to learn about Japan through English-taught courses on a variety of subjects. The CJP also has two main academic components: Japanese Language Courses (JLC) and Japan Studies Courses (JSC). Regular KGU students are also enrolled in the Japan Studies Courses, providing further opportunity for interaction between exchange students and their Japanese pupils. Small class sizes and a variety of activities both on and off campus encourage CJP participants to study a wide array of subjects and share their own backgrounds with KGU students.

Exchange students coming to KGU for a full academic year will normally begin in the Fall Semester, followed by the Winter Intensive Period, and the Spring Semester. It is also possible for them to come for a single semester, or for one academic year starting with Spring Semester (in these cases, however, the Winter Intensive Period is not available).



## Nihongo Partners

Acting as language partners for the exchange student's life first semester, KGU local student volunteer assist the exchange students in their practice of Japanese. Only students who are enrolled in Japanese Language Track in the Contemporary Japan Program and apply in advance are able to be assigned Nihongo Partners.

## GS(Global Student)Network

GS Network is the official students group endorsed by CIEC (Center for International Education and Cooperation) and provides various supports to exchange students during orientation. They also plan and hold cultural exchange activities for both exchange students and KGU students over the course of the year.

## Interaction with regular KGU students

KGU provides a variety of other opportunities for international students to interact with other KGU students as part of the Kwansei Gakuin community, forming friendships which transcend nationalities. The Fujita Global Lounge provides a place for international and Japanese students to relax and chat, while the Coffee Hour, held three times a semester, provides an opportunity for students and teachers (both Japanese and foreign) to gather informally. Many Japanese students avail themselves of this chance to meet and make friends with international students. International Student Week is an annually-held event, where international students can express their thoughts and opinions through exhibitions and presentations. It also enables Japanese students and others to look afresh at their own culture, through the eyes of non-Japanese students.

## Host Families

Exchange students have the option of living with Japanese host families. These families accept students from widely different cultures, and welcome them as members of their family. This enables them not only to use the Japanese language outside the classroom, but also to experience Japanese culture firsthand, and gain an insight into the ideas and values of ordinary Japanese people.



# International Activities



## Partner Institutions

As of May, 2016.

Country /Area	Institutions	Student Mobility
<b>◆ Asia</b>		
China	Beijing International Studies University	L, D
China	Fudan University	E
China	Hunan University	D
China	Jilin University	E, L
China	Nanjing University	D
China	Renmin University of China	
China	Shanghai Jiao Tong University	
China	Sichuan University	E
China	Soochow University	E, L
China	Sun Yat-Sen University	E
China	Tsinghua University of China	
China / HK	Chinese University of Hong Kong	E
China / HK	Hong Kong Baptist University	E
China / HK	University of Hong Kong	
China / Macau	University of Macau	E
India	Amity University	
India	Jawaharlal Nehru University	
Indonesia	Diponegoro University	S
Indonesia	Ma Chung University	
Indonesia	Padjajaran University	E, S
Indonesia	Satya Wacana Christian University	E, S, D
Indonesia	University of Udayna	S
Korea	Chonbuk University	
Korea	Chung-Ang University	E
Korea	Dongguk University	E
Korea	Ewha Womans University	E
Korea	Hannam University	E
Korea	Hanyang University	E
Korea	Korea Institute for Industrial Economics and Trade	
Korea	Konkuk University	E
Korea	Kyung Hee University	E, L
Korea	Methodist Theological University	E
Korea	Pusan National University	E
Korea	Sogang University	E
Korea	University of Seoul	E
Korea	Yonsei University	E, L
Kyrgyzstan	Kyrgyz National University	
Malaysia	Tunku Abdul Rahman University	E, S
Malaysia	University of Malaya	E, S, L
Mongolia	Mongolian University of Science and Technology	
Mongolia	National Academy of Governance, Mongolia	G
Nepal	Tribhuvan University	
Philippines	Ateneo de Manila University	E
Philippines	Silliman University	
Philippines	University of the Visayas	L
Singapore	Nanyang Technological University	E
Singapore	National University of Singapore	E, G
Singapore	Singapore Management University	E
Taiwan	Fu Jen Catholic University	E

Country /Area	Institutions	Student Mobility
Taiwan	National Chengchi University	E
Taiwan	National Kaohsiung First University of Science and Technology	
Taiwan	National Taipei University	E
Taiwan	National Taipei University of Education	
Taiwan	National Taiwan Normal University	E, L, S
Taiwan	National Taiwan University	E
Taiwan	Soochow University	E
Taiwan	Tunghai University	E, L
Thailand	Assumption University	E, S
Thailand	Kasetsart University	
Thailand	Mahidol University International College	E
Thailand	Payap University	E
Thailand	Rangsit University	E
Timor-Leste	National University of Timor-Leste	S
Vietnam	Vietnam National University, University of Engineering and Technology	
Vietnam	Vietnam University of Commerce	E, S
<b>◆ Oceania</b>		
Australia	La Trobe University	E
Australia	Macquarie University	E
Australia	Murdoch University	E
Australia	University of Adelaide	E
Australia	University of New South Wales	E, L, I
Australia	University of Queensland	E, D
Australia	University of South Australia	E
Australia	University of Sydney	E
Australia	University of Western Australia	E
New Zealand	University of Canterbury	E
<b>◆ North America</b>		
Canada	Huron University College at Western University	E
Canada	King's University College at Western University	E
Canada	Langara College	L
Canada	McGill University	E
Canada	Memorial University of Newfoundland	E
Canada	Mount Allison University	E, L, S, D
Canada	Queen's University	E, L, S
Canada	Simon Fraser University	E
Canada	University of British Columbia	E
Canada	University of Calgary	E
Canada	University of Guelph	E, L
Canada	University of Toronto / Victoria University	E, L, S
Canada	University of Victoria, Peter B. Gustavson School of Business	E, G
Canada	University of Waterloo	
U.S.A.	American University Law School	G
U.S.A.	Boston University Law School	G
U.S.A.	Drake University	E
U.S.A.	Emory University	E
U.S.A.	Florida State University	E
U.S.A.	Georgetown University Law School	G
U.S.A.	Goucher College	E
U.S.A.	Hofstra University Law School	G

Country /Area	Institutions	Student Mobility
U.S.A.	Nebraska Wesleyan University	E
U.S.A.	North Carolina State University	E
U.S.A.	Pitzer College	E
U.S.A.	San Francisco State University	E, G
U.S.A.	San Jose State University	E
U.S.A.	Sonoma State University	L
U.S.A.	Southern Methodist University	E
U.S.A.	Stetson University	E
U.S.A.	Suffolk University Law School	G
U.S.A.	Texas A&M University	E
U.S.A.	University of California, Davis	L, U
U.S.A.	University of California, Irvine	L, U
U.S.A.	University of California, Riverside	L, U
U.S.A.	University of Georgia	E
U.S.A.	University of Hawai'i at Manoa	E, L, U
U.S.A.	University of Massachusetts at Amherst	E
U.S.A.	University of Missouri-Columbia	E
U.S.A.	University of Nevada, Reno	E
U.S.A.	University of Nebraska Kearney	E, U
U.S.A.	University of Nebraska Omaha	E, L
U.S.A.	University of New Mexico	
U.S.A.	University of North Carolina at Chapel Hill	E
U.S.A.	University of the Pacific	E
U.S.A.	University of San Francisco	
U.S.A.	University of Washington, Bothell	E
U.S.A.	Washington and Jefferson College	E
U.S.A.	Washington Center	I
U.S.A.	Whitworth University	E
<b>◆ Central and South America</b>		
Brazil	Londrina State University	
Brazil	Rio de Janeiro State University	E
Brazil	University of Sao Paulo	E
Costa Rica	University of Peace	
Mexico	National Autonomous University of Mexico	
Mexico	University of Monterrey	E
<b>◆ Europe</b>		
Croatia	University of Split	
Denmark	Aarhus University	E
Denmark	University of Southern Denmark	E
Finland	Helsinki Metropolia University of Applied Sciences	E
Finland	University of Vaasa	E,
France	Lumiere University of Lyon 2	E, L
France	Lyon Institute of Political Studies	E
France	Normandy Business School	E, G
France	University of Franche-Comte	L
France	University of Paris-Est	
France	University of Science and Technology at Lille 1	E, D
Germany	European University Viadrina	E
Germany	Friedrich-Alexander University of Erlangen-Nurnberg	E
Germany	Heinrich-Heine University of Dusseldorf	E, L

Country /Area	Institutions	Student Mobility
Germany	Johannes Gutenberg University Mainz	E
Germany	Ruhr University Bochum	E
Germany	University of Applied Sciences (HTW Berlin)	E
Germany	University of Augsburg	E
Germany	University of Regensburg	E, L
Germany	Witten / Herdecke University	
Iceland	University of Iceland	E
Ireland	Dublin City University	E
Italy	Marche Polytechnic University	
Italy	University of Naples Federico II	
Latvia	University of Latvia	E
Netherlands	Niod, Institute for War, Holocaust and Genocide Studies	
Netherlands	Hanze University of Applied Sciences	E
Netherlands	Radboud University Nijmegen	E
Netherlands	The Hague University of Applied Sciences	E
Norway	Norwegian University of Science and Technology	E
Norway	University of Oslo	E
Poland	Cracow University of Economics	E
Poland	University of Lodz	E
Spain	Autonomous University of Madrid	
Spain	Pompeu Fabra University	E
Spain	University of Alicante	L
Sweden	Linkoping University	E
Sweden	Linnaeus University	E
Switzerland	University of Bern	
U.K.	Aberdeen Business School, Robert Gordon University	G
U.K.	Bristol University	
U.K.	Cardiff University	E
U.K.	Hughes Hall, University of Cambridge	L
U.K.	Oxford University	L
U.K.	School of Oriental and African Studies (SOAS), University of London	E
U.K.	University of Edinburgh	E
U.K.	University of Leicester	E, L
U.K.	University of Manchester	E
U.K.	University of Northampton	I
U.K.	University of Stirling	E, L
<b>◆ Middle/Near East</b>		
Iran	University of Kurdistan	
Turkey	Kocaeli University	E, S
<b>◆ Africa</b>		
Zimbabwe	Africa University	
<b>◆ International Organization/Consortium/Association</b>		
	Association of Christian Universities and Colleges in Asia (ACUCA)	E
	Canada-Japan Strategic Student Exchange Program	E
	The United Board for Christian Higher Education in Asia (UBCHEA)	
	United Nations High Commissioner for Refugees (UNHCR)	
	United Nations Volunteers (UNV)	
	University Studies Abroad Consortium (USAC)	

E = Student Exchange  
 S = International Student Seminar  
 L = Language Program  
 G = Graduate-level Study Abroad  
 U = Undergraduate-level Study Abroad  
 D = Double-Degree Program  
 I = Internship



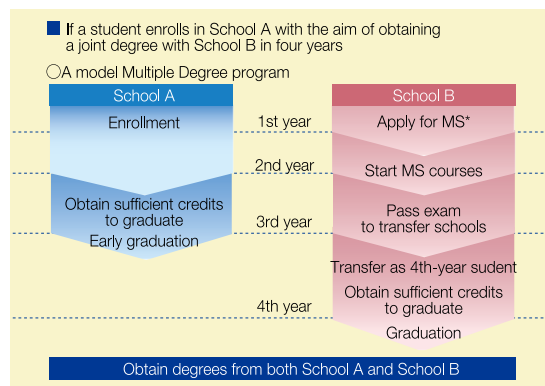
## Double Degree Program

KGU has signed agreements on double degree programs with three partner universities: Mount Allison University (MTA) in Canada, the University of Queensland (UQ) in Australia and University of Science and Technology at Lille 1 in France. The program allows students to obtain degrees from both KGU and the partner university in 4-5 years. The program with MTA is available to students in the School of Sociology, Business Administration, International Studies, with UQ it is available to students in the School of International Studies, with University of Science and Technology at Lille 1 is available to students in the School of Economics.



## The Multiple Degree System

This revolutionary system caters to intellectually ambitious students who want to major in multiple fields. Students in the Schools of Sociology, Law and Politics, Economics, Human Welfare Studies, and International Studies who wish to obtain a second degree from another school in four years can choose school from among the seven : School of Theology, Humanities, Sociology, Law and Politics, Economics, Business Administration, and International Studies.



\*MS: System enabling students to take courses in other schools, including practical courses (seminars), as a minor program

### Unique in Japan

Obtaining a degree from two different schools involves more study and effort than graduating from one school alone. Conclusively, this will extend and expand student's comprehensive understanding and their interests. There is no doubt that students will develop into empowered, broad-minded individuals in this sophisticated and continuously diversifying society.

## Active World Citizens Program

### Challenge Yourself. Be a "World Citizen"!

In September 2012, KGU became one of 11 universities in Japan to receive a grant "Go Global Japan Project" endorsed by MEXT (Ministry of Education, Culture, Sports, Science and Technology). This was the second consecutive year after the Cross-Cultural College (CCC) grant in 2011. This university-wide incentive is open to all 11 undergraduate schools, aims to boost student mobility in study-abroad programs, and increase global competitiveness.

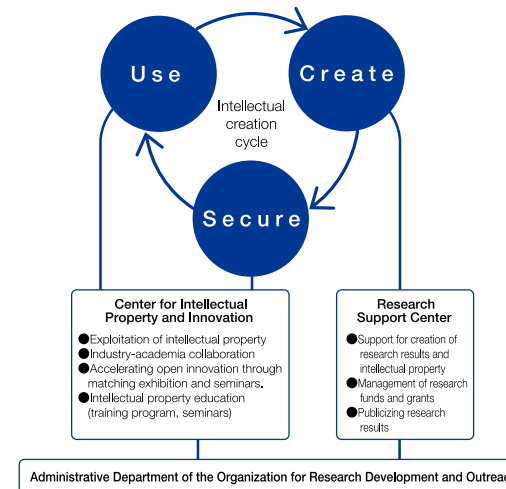
Three new Certificate Programs (CP) in the Active World Citizens Program have been designed for the acquisition of global skills necessary for becoming leaders and experts in a variety of disciplines. This program not only cultivates international, cultural, and linguistic knowledge, but also enhances the skills of adaptability and flexibility needed for international and intercultural fields. Qualifying students will receive a CP certificate with their undergraduate degree upon graduation.



## Organization for Research Development and Outreach

### KGU's Portal Site for Promoting Outreach

"The Research Support Center", "Center for Intellectual Property and Innovation" and "The Social Outreach Center" are positioned as KGU's one-stop portal site for industry-academia collaboration and research exchanges.



### Support for Intellectual creation cycle

The intellectual creation cycle is supported by "The Research Support Center" and "Center for Intellectual Property and Innovation" The Research Support Center is engaged in actively procuring external funding such as scientific research grants in order to further promote the university's research.

The Center for Intellectual Property and Innovation protects the research achievements of the university as intellectual property and supports their use. It is the contact point for projects related to leading-edge technology creation matching KGU technology with the needs of industry.

### Activities to benefit local communities

The Social Outreach Center is pressing ahead with activities to benefit local communities in collaboration with corporations, regional community groups, local governments and other organizations. These activities mainly focus on the support and promotion of educational programs that contribute to society at large.

### Support for the Institutes for Research

Besides the abovementioned three centers, the administrative section has been set up to support the activities of institutes for research.

## KGU Research Center chosen for MEXT-Supported Program for the Strategic Reserch Foundation at Private Universities

This MEXT project offers focused comprehensive support to private universities to help them strengthen their infrastructure for research and carry out advanced research project.

- Research Center for Environment & Advanced Energy under Quantum Control
- Research Center for Intelligent Bio-Materials
- Research Center for Creation of Nano-Single sized functional organic molecules
- Bio-robotics Research Center

## The Miwa and Nagata Laboratories of the School of Science and Technology provided technological cooperation for the creation of blockbuster TV anime "Nodame Cantabile"

The technology of computer animation for piano-fingering developed by the Miwa Hiroyoshi Laboratory and the Nagata Noriko Laboratory of the School of Science and Technology was used for creating the piano-playing scenes in the enormously successful TV anime 'Nodame Cantabile Pari-hen' and 'Nodame Cantabile finale'. This technology realized graphic recreation of the motion of piano-playing in animation, including that of the finger tips, which had not previously been depicted in detail in traditional anime. The Miwa and Nagata Laboratories have also been researching and developing technology to generate computer graphics (CG) of human piano-playing. In the long term, they are aiming at establishing technologies to automatically generate more humanlike CG piano playing using only musical score data, by applying theories related to physics, anatomy and optimization algorithms.



©Tomoko Ninomiya/Kodansha Ltd./Nodame Cantabile 2 Production Committee



©Tomoko Ninomiya/Kodansha Ltd./Nodame Cantabile 2 Production Committee

## Institutes for Education and Research

### Libraries



#### University Library

The library is designed and functioned to satisfy intellectual needs. It has a collection of about 1.5 million volumes, 1,780 seats and about 117 PCs. In addition to books, periodicals and audio-visual materials, the library provides access to various web databases and electronic journals. It supports a wide range of educational and research activities on campus and provides a venue for intellectual interaction and creativity.



#### University Library, KSC Branch

Houses a collection of about 250,000 books and over 2,000 different academic journals mainly related to the School of Policy Studies and School of Science and Technology. The Media Forum has about 100 PCs, and assists the education and research activities of the Kobe- Sanda Campus.



#### Seiwa Campus Library

He more than 200,000 volume collection of this library supports self-directed research activities. In addition to specialist books in the educational field, it houses valuable works and a large number of journals in related areas. It has an AV room that allows users to view the library's video, CD and DVD collections.

#### Institute of Disaster Area Revitalization, Regrowth and Governance



This is the first-ever institute in Japan which specializes in revitalization and regrowth process of a disaster-hit society. It was established on January 17th, 2005, on the occasion of the tenth anniversary of the Kobe Earthquake. The Institute took an initiative to found the Japan Society for Disaster Recovery and Revitalization in 2008 as an open collaborating platform with researchers, journalists, volunteers and administrators. It published a draft policy on the Basic Law on Disaster Reconstruction in 2009, and has been disseminating the policy to the public.

#### Institute for Advanced Social Research



Established in 2008 as a center for theoretical and practical study of modern social phenomena and problems. Aims to establish culturally diverse societies. Conducts cutting-edge social research projects with partner institutions in Japan and overseas. Alongside organizing public lectures and conferences, the institute focuses on graduate education with grants-in-aid programs.

#### Center for Research into and Promotion of Higher Education



A center created in April 2010 to improve faculty teaching skills and student learning skills by promoting a broad range of measures driven by specialist knowledge. Work areas include conducting class evaluations and other surveys, educational development and support using the LMS (Learning Management System) LUNA, as well as creation and augmentation of educational environments.

#### Institute for Industrial Research



Created in 1934 to carry out economic and industrial research, the Institute conducts analytical research on the economic activities of society using a wide variety of approaches. It organizes lectures on contemporary issues by speakers from academic societies, government departments and the private sector. It also acts as the administrative office for the EUJ at Kwansai Gakuin University, and in that context promotes research and lectures specifically on the EU. With its stock of EU publications and access to databases containing statistics on industry and the economy, the Institute supports research activities of teaching staff, researchers as well as students.

#### Language Center



Offers intensive programs in English, French and German along with elective foreign language courses. Conducts collaborative research on language and culture. The Center's wide range of research activities includes providing research seminars in six languages (English, French, German, Chinese, Korean and Spanish), and publishing a research journal.

#### Research Center for Teacher Development



The center for students who want to become qualified high-school teachers, school librarians, or museum curators. Offers orientation courses, professional advice, pre-service teachers' training (including practices at schools and care facilities), and guidance on teaching careers. Also conducts research on school education, and publishes the findings in an annual journal.

## Institutes for Education and Research

#### Christian Center



Offers several Christian education programs in line with the school's founding spirit. The Center's Chapel Hour program offers practical Christian education. Its other programs include the Early Morning Prayer Meeting, United University Worship, concerts and Christmas Chapel. The center calls for active student participation, in order to encourage interaction among congregations and ministers and spread Christian truths.

#### Kwansai Gakuin Archives



Maintain the records that document the history of Kwansai Gakuin and its management, staff, and students from its foundation in 1889. In order to use the past in the present to enhance the future of our institution, the Archives publishes the annual *Journal of Kwansai Gakuin History* and the *Archives Newsletter*, and holds occasional seminars.

#### University Museum



To commemorate the 125th anniversary of the founding of the School, a museum opened in the Nishinomiya Uegahara campus clock tower on September 28, 2014. The museum will collect, organize, and store a variety of materials that are the property of Kwansai Gakuin. By researching, studying, and displaying these materials, the museum will fulfill its role as a learning support facility open to the public.

#### Center for Japanese Language Education



conducts and provides the center Japanese courses for international students, cultural exchange classes and events for students and elementary school children, classes for students interested in teaching Japanese, etc. It also develops learning materials and educational programs based on Japanese language education research, and conducts information campaigns about Japanese language education through lectures and other activities.

#### Institute for Human Rights Research and Education

Carries out various human rights education and research activities that deal with a wide range of discrimination issues from the perspective of human rights. Holds research seminars, publishes a research journal and educational pamphlets, plans human rights issues presentations for lectures in human rights courses, and collects and organizes human rights publications and materials.

#### Center for Common Educational Programs

Plans, proposes and runs a series of courses open to all the university's students known as the Common Educational Program. Provides a wide array of courses with objectives such as increasing the motivation of students to study at university, and providing broad acculturation and skills.

#### Office for Educational Collaboration

For the coordination of Kwansai Gakuin's comprehensive and integrated education, provides a single point of contact, and gathers, shares, and transmits information.

#### Research Center for Christianity and Culture

A human-centered research and education organization that draws on the Christian ideals on which the school was founded to seek answers and meanings to modern issues. Holds educational activities and releases research project results in academic journals. Holds seminars and presentations.

#### Child Center

The Child Center, established in 2010 on the Nishinomiya Seiwa Campus, focuses on three project areas:

- Assisting children and child rearing in the community
- Supporting the development of children with special needs
- Toy and picture book room as a resource for students' education and research

### Convenient Location for Graduate Students and Job Placement Osaka Umeda Campus

The Osaka Umeda Campus is in Applause Tower, a short walk from Hankyu Umeda Station. Besides holding graduate school classes for people in employ-

ment, the campus offers support for lifelong learning and student job placement. It is also a base for industry academia linking and PR activities.



### A Base for Information Gathering and Provision Tokyo Marunouchi Campus

The Tokyo Marunouchi Campus, right next to Tokyo Station, is a base for information gathering and dissemination, the furthering of lifelong learning, and job placement support in the Tokyo metropolitan area. Of special note is that it is also the base of the

Tokyo Alumni Association. The Tokyo Marunouchi Campus staff help KGU students find work in Tokyo. KGU graduates living in Tokyo are also available there to support students.



# Group Learning Space



To expand the space in which students can interact with graduate students and members of the teaching faculty as well as teach and learn from each other, Kwansei Gakuin has created group learning space such as the Academic Commons at Kobe Sanda Campus and the Learning Commons at the Nishinomiya Uegahara Campus.

## Academic Commons(Kobe Sanda Campus)

Providing a variety of areas including a spacious Active Learning Zone of around 800m<sup>2</sup> and a well-appointed theater with a 120-inch high-definition projector and audio facilities, the Academic Commons serves as a comprehensive forum for self-directed study and extra-curricular learning. About 100 activities were held during the 2015-2016 academic year, including "Crescent Hour," in which university teachers, staff and students gave talks about their research and activities, and "Academic Day," which provides local children with opportunities for learning.



## Learning Commons (Nishinomiya Uegahara Campus)

The Learning Commons opened in Building H and the Central Auditorium (125th Anniversary Auditorium) in 2014 as a "voluntary learning space for students".

On the 1st floor of Building H is a "Lounge" where students can gather and eat, and "CReatE1," where both individuals and groups can study; and on the 2nd floor is "CReatE2," which has several group learning rooms where students can prepare plans and documents for presentations and other purposes.

In the Central Auditorium, there are three zones laid out over one basement level floor: "Lounge," where students can talk to each other in a relaxed atmosphere, "Seminar," where they can try out what they have learned, and "Learning," where they can hold creative discussions. Students can take the initiative to gather, learn, and create, in these areas designed to suit a variety of purposes and activities.



# Life Design & Job Placement



## Life Design Program

### Career planning support throughout the students' university years

Kwansei Gakuin University supports students' career planning throughout their university years through its 'Life Design Program', a cooperative program that falls between the regular curriculum and KGU's non-regular extension activities, and which the university considers to be part of its general education program.

The Life Design Program encourages students to think about how to live their own lives, contribute to society, and the kind of job to choose in order to accomplish these aims.

Students learn about "the kinds of jobs there are in society, and the skills required for them," while having the opportunity to experience various jobs hands-on in the non-regular program, where they are able to see what occupation best enables them to realize their potential. They are then encouraged to develop the relevant skills through the extension program.



## Job Placement Success

### High placement rate

Job placement every year for KGU graduates has been highly successful. In 2015, 98.0% of male students, and 99.1% of female students were offered employment. These rates are well above the national average.

KGU graduates, with their excellent academic achievements and rich personal qualities, play important role, and have established a vast human network in the business sector.

KGU graduates find work in a variety of industries -such as manufacturing, finance, the mass media, information and communication, teaching, and others. Over half of them go to work for large companies that have more than 1000 employees. This shows that employers highly evaluate KGU graduates.

## Support for International Students

The Center for Career Planning and Placement conducts a job placement support program specifically targeting international students that runs throughout the year. The center distributes booklets, conducts aptitude tests, and holds seminars. It places emphasis on providing career support services that listen to the hopes and concerns of all international students who want to work in Japan.



Besides its two Professional Graduate Schools - the Law School and the Institute of Business and Accounting (Business School and Accounting School) - KGU has 12 other Graduate Schools.

With facilities and a learning environment to equip students with the specialist and comprehensive knowledge needed today, the Graduate Schools of KGU pursue a wide range of academic research based on our motto of "Mastery for Service."

## Graduate Schools

Graduate School of Theology

### Turning Out Theologians who can Contribute to Society and Christianity

The Graduate School of Theology trains participants to be clergy, missionaries, religious and bible instructors. An integrated six-year program continues from the undergraduate to the Masters level. Besides advanced scholastic guidance, we have a curriculum to meet the needs of the increasing number of people who wish to study while in employment. Starting from the Old and New Testaments, Christian history, lectures and practice in thought and culture, and practicum in churches and hospitals, we give our students the tools for contributing to society as Christians. In addition, at the Doctoral level we focus on providing students with help in their dissertations by promoting presentations at academic conferences and facilitating information exchange with other universities and research institutes. Our goal is to turn out graduates with a well-rounded education and in-depth specialized knowledge.

Graduate School of Sociology

### Providing the Expertise to Work on the Frontier of Sociology

The Graduate School provides an advanced education in both theoretical and empirical research in sociology. Students have many and varied research opportunities, with the possibility of obtaining credits from an affiliated university. At the Masters level, we also offer the Social Research Specialist Course, which trains students to become advanced professional specialists equipped with the specialist social survey skills needed in industry and government. At the Doctoral level, the School trains young researchers, who make up an integral part of the center of sociological research. By combining advanced lectures and tutorials with hands-on experience, the School ensures that its graduates are advanced social researchers.

Graduate School of Humanities

### Twelve Areas of Specialization, Allowing a Wide Range of In-Depth Research

The Graduate School of Humanities covers twelve areas of specialization, of which eleven offer both MA and PhD courses and one an MA course. The former includes Philosophy and Ethics, Aesthetics and Art Studies, Geography and Area Studies, Japanese History, Asian History, European and American History, Psychological Sciences, Japanese, English, French and German Literature and Linguistics. The latter is the School Education course. The MA courses prepare students to carry out original research as well as to contribute to society with knowledge and creative ideas acquired in their respective fields, and the PhD courses aim to further the development of researchers in their chosen specialties. Equipped with a wealth of resources (including historical documents) and practical facilities, the School provides an excellent environment for both theoretical and experimental research, as well as opportunities for fieldwork.

Graduate School of Law and Politics

### Needs-Centered Research Helps Train Advanced Researchers and Business People

This graduate school is special in that it not only trains researchers but also human resources capable of responding meticulously to society's needs. At the Masters level, within the single Department of Law and Politics, there are two courses: the academic course for training researchers; and the expert course for turning out skilled professionals in law and politics. In the expert course, there are five programs—practical law, business law, public policy, international relations, and independent research—that offer meticulous guidance. The Doctoral level program consists of three Departments: Political Science, Basic Studies of Law and Civil and Criminal Law. Students conduct research into law and politics through insight into the realities of the world and through advanced methods stressing objectivity and moderation.

Graduate School of Economics

### Graduate School with a History and Tradition of Independent Research

This graduate school was inaugurated in 1956, the year that KGU established its Graduate School system. Since that time the school has prided itself on independent research, including the hosting of academic conferences and publication of the KGU Graduate School of Economics newsletter, the school's own research journal published since 1968. The school has supported students in their studies across a range of fields, including economic theory, statistics and quantitative economics, the history of economics, economic history, economic policy, government fiscal policy, finance, international economy, social policy, and labor economics. In 1996, the Economist Course was established, with classes held in both the daytime and evenings for mid-career professional. The course offers intellectual training for people aiming to become specialists in fields such as tax accounting, accounting, teaching, and the civil service, producing economists who can respond to the needs of today's highly complex economy and society.

Graduate School of Science and Technology

### Award-Winning, Highly Rated, Vibrant Research

Since its establishment as the Graduate School of Science in 1965, this school has produced scholars who have gone on to win numerous awards, including the Order of Cultural Merit, the Saruhashi Prize, the Tomas Hirschfeld Prize, and Commendation from the Minister of Education, Culture, Sports, Science and Technology. It has also been for years considered one of Japan's top scientific research centers, selected for projects like the Ministry of Education, Culture, Sports, Science and Technology's High-Tech Research Center project, the Open Research Center project, and the Industry-Academia Joint Research project. In addition to the Departments of Physics and Chemistry, majors that were established at the time of the Graduate School's foundation, a Department of Biosciences was added in 2004 and the name of the School changed to the Graduate School of Science and Technology. In 2006, the Department of Informatics and in 2009 the Department of Mathematical Sciences were established and set up in the well-equipped, pleasant surroundings of the Kobe Sanda campus, making for an environment that encourages lively education and research. In addition, the "Integrated Science and Technology" program has all-English curriculum which has started in 2012.

Graduate School of Language, Communication, and Culture

### Better Communication for a Better World

This is an independent graduate school based in the Language Center. In the first term, students improve their language communication capabilities, a key to research, and carry out specialized research on language. There are eight programs: Linguistic Science, which analyzes language and its use; Language and Cultural Studies (American & British studies / French studies / German studies / Chinese studies / Interdisciplinary Multilingual and Multicultural studies), which studies the deep relationship between language and culture; and Language Education, which researches the theories and practices of language learning; Japanese-language education program, which researches the theories and practices of Japanese language learning. All courses operate on a semester system and are offered both in the daytime and, for the benefit of people working during the day, in the evening except for the Japanese education program and cultural linguistic programs (only for French, German and Chinese studies).

Graduate School of Business Administration

### Research Course for the PhD and Specialized Academic Course for Training Key Personnel for Business

What sets this graduate school apart is its wide-ranging research and curriculum in the six areas of management, accounting, marketing, finance, business information, and international business. The Research Course is a five-year integrated course for turning out researchers with deep insight and powerful analytical skills. It provides a range of support for students who want to obtain their PhD. The Specialized Academic Course is a two-year course at the Masters level for people who wish to be active in business. Besides offering specialized knowledge and skills grounded in theory, the school offers internships and industry-sponsored courses taught by instructors currently playing an active role in the business world. Students acquire expertise in a wide range of fields so that they can have the intellectual and analytical skills and the breadth of vision that they will need when they take their place as key players in the world of business.

Graduate School of Policy Studies

### The Graduate School of Policy Studies aims to foster experts for policy analysis and policymaking.

In the Graduate School of Policy Studies, students conduct research through an interdisciplinary approach, using human ecology as the foundation and integrating traditional fields such as political science, law, management, social science, physiology and engineering. Taking effect in 2011, the revised curriculum of the master's program reflects the development and expansion of the field of policy studies. The revised curriculum contains six specialized areas: "Public Policy Studies", "Environmental Policy Studies", "Language and Culture Policy Studies", "Urban Studies", "International Policy Studies" and "Applied Informatics". In each area, real-world-based classes are conducted with an eye to policy analysis and policymaking, extending from problem finding to problem solving. Additionally, "International Studies & Development" offers an English medium option, under which English is the medium for all courses, research supervision, and the master's thesis.



# KGU Graduate Schools



## Graduate School of Human Welfare Studies

### Broadly and deeply exploring humanity and society

Concerned with the increasing complexity and gravity of today's society as manifested in various social issues and problems, the Graduate School of Human Welfare Studies was established in April 2008. The Graduate Program trains practitioners and researchers to solve today's social issues and life challenges that require highly advanced knowledge and skills.

The Master's course builds upon the students' undergraduate education by further developing their professional expertise. The Doctoral course subsequently builds on the two-year Master's course to enhance the scholarly pursuit of new knowledge, and advances the development of academic rigor and innovation.



## Graduate School of Education

### Addressing problems surrounding children

The Graduate School of Education was established in April 2009 in order to promote education and research that can contribute to the solution of the problems involving children and education which face modern society and to foster individual who can contribute to society. The Graduate School offers the three courses of early childhood education, elementary and secondary education and applied education. The Master's program focuses on helping students understand the theories of early childhood, elementary and secondary education and applied education and, based on this, allows them to learn about, and cultivate their ability to develop practical methods. During the second semester, we mainly provide instruction for research for thesis completion, aiming at fostering researchers who have the advanced research capabilities necessary to engage in specialized services, in addition to a broad foundation academic knowledge.

## Graduate School of International Studies

### Fostering highly-skilled professionals and researchers who can contribute to solving regional and global issues

The Graduate School of International Studies aims to foster highly-skilled professionals and researchers who can contribute to solving various regional and global issues related to the transformation of the international community and its governance structure. To achieve this aim, the School intends to offer two area studies courses of North American Studies and Asian Studies, as well as a Global Studies course, which focuses on research into global issues that transcend regional boundaries. All of these courses consist of three specialized fields of Cultures, Societies / Politics, and Economics / Management.

## Professional Graduate Schools

## Law School

### Fostering Specialists in Law with focusing on Corporations, Public Service, Human Rights and Globalization

Kwansei Gakuin Law School aims to contribute to the community in terms of providing legal professionals who are good at corporate law, public service and international law in a way to respect human rights. The offered seminars and classes are designed to prepare students to meet today's complex and diverse legal needs by fusing both theory and practice. The majority of the Law School faculty is constituted of legal practitioners such as attorneys, ex-judges and patent agents who work closely with academic faculty so as to give students the best possible guidance. By means of furnishing small group instructions, the law students can enjoy hands-on legal training. The Law School has developed amicable links with US law schools, so that our best students can spend a year at a partner law school.

## Institute of Business and Accounting

### Developing Management and Accounting Professionals who can be Leaders in the World Economy

The Institute consists of the Business School, which offers world-class MBA education and the Accounting School, which trains professional accountants. The Business School comprises the Corporate Strategic Management Course for people in employment, and the International Management Course, where all classes are conducted in English and which is mainly aimed at new university graduates and foreign students. The Accounting School offers courses designed for students wishing to sit the national Certified Public Accountants' Examination, and other courses for those in charge of accounting and finance in private corporations and local government officers. The school is staffed by practically-oriented instructors who have worked in the front line of business both in Japan and abroad. The Accounting School has a curriculum conforming to the international education standards laid down by the International Federation of Accountants.

# KGU Undergraduate Schools



KGU's 11 schools provide the ideal learning environment for the 21st century, with consideration for how each specialized field should contribute to society. Our aim is to offer education that meets today's needs by giving students both specialized skills and a wide, interdisciplinary range of knowledge.

## School of Theology

[Courses]  
Christian Missionary Work/  
Christian Thought and Culture/

### Fostering Society's Leaders Based on the World's Most Widespread Religion

The two Courses in the School were established in 2004. With the aim of training missionaries with a wide range of specialized knowledge, we supplemented the Christian Missionary Work Course with the Christian Thought and Culture Course, which is open to students not baptized as Christians. Against the background of the history of Western thought, the courses take an objective, theoretical approach to Christianity, which exerts a major influence on world events. By looking at modern-day issues like peace, human rights, social welfare, and the environment from a theological viewpoint, we aim to provide students with the spiritual and practical tools for serving society.

## School of Sociology

Department of Sociology/  
[Major areas and Fields of study]  
[Research cluster]  
Contemporary Sociology/Quantitative Sociology/  
Qualitative Sociology/Anthropology and Folklore/  
Media and Communication/Social Psychology/

### Understanding the Complexities of Contemporary Society and Nurturing the Ability to Make a Positive Contribution

As a trailblazer in the field of sociology in Japan, the school has been engaged in cutting edge research which enhances human well-being since its foundation in 1960. With the biblical quotation "The truth shall set you free" as its basic philosophy, the School of Sociology attacks problems from a broad perspective and an extensive range of knowledge, with the aim of producing graduates who can make a concrete contribution to society. Sociology is an area of study that encompasses a wide range of social phenomena and issues. The curriculum is therefore composed of six research clusters: comprehensive courses to furnish students with a solid liberal education and an extensive body of knowledge, and specialized courses providing students with specific knowledge and practical skills.



## School of Humanities

Department of Culture and History  
[Majors]  
Philosophy and Ethics/Aesthetics and Art studies/  
Geography and Area Studies/Japanese History/Asian History/  
European and American History/  
Department of Integrated Psychological Sciences/  
[Majors]  
Psychological Sciences/Department of Literature and Linguistics/  
[Majors]  
Japanese Literature and Linguistics/  
English Literature and Linguistics/French Literature and Linguistics/  
German Literature and Linguistics/

### Exploring the Humanities in Pursuit of Deeper Wisdom, an Open Mind, and a High Level of Specialized Knowledge

With the goal of pursuing a comprehensive, and detailed study of the humanities, the School of Humanities has three Departments comprising 11 majors. The six majors in the Department of Culture and History examine the essence of the human condition from a historical and cultural perspective; the Department of Integrated Psychological Sciences, analyzes the lifestyles and problems of humans in modern society, while the four majors in the Department of Literature and Linguistics, seek to understand human behavior from a literary and linguistic viewpoint. Starting by understanding the basics of the wide-ranging discipline referred to as the humanities, students proceed to more specialized study in small classes, where instructors can work closely with each and every student. This fosters the student's ability to take an open-minded approach in identifying and solving problems.

## School of Law and Politics

Department of Law/Department of Political Science/  
[Courses]  
Law for Legal Profession/Legal Theory/Business Law/  
Public Policy/International Law and Politics/Political System/  
An Innovative Education System - Varied and Deep  
Insights into Society through the Study of Law and Politics

Our educational creed of "Social Approach" means that legal education should focus on the ability to use law as ways to gain insights into social phenomena from a broad social point of view. The School comprises two Departments: the Department of Law, which aims to turn out people who contribute to society by cultivating their legal expertise and decision-making abilities, and the Department of Political Science, which trains people to exercise leadership in any situation based on analyses of both domestic and international political issues. In recent years, the School of Law and Politics has been working hard to prepare for a new century of academic excellence. Our undergraduate program now has six courses that provide the student with the necessary knowledge for pursuing a career of his or her interest. All courses adopt a "stairway" system that lets the student progress naturally from an introduction to basic legal and political theory to more practical and specialized areas of law and politics. A particularly notable section of our new curriculum is the wide variety of seminars, ranging from basic study skills for first-year students to more specialized and practical subjects for upper-class students.



School of Economics

[Courses]  
Public Finance, Money and Credit in Japanese Economy/  
Firms and Households in Japan/  
History, Thoughts and Culture in World Economy/  
Global Economy, Environment and Resources/  
Regional Policy/

**Fostering Ethical People with the Power to Decide and Take Action**

With a staged curriculum that proceeds from an understanding of the state of the economy to the basics of economic theory, this school emphasizes the mastery of ethical, economic thinking that will be useful in the "real world". For the past 40 years, the School's teaching has been carried out in small groups, starting with the required seminars from the first year, active and stimulating seminars remain a hallmark of our teaching activities throughout all courses. With debates and other inter-seminar competitions, as well as a wealth of exchanges with universities in Japan, the rest of Asia, Europe, and North America, the school produces graduates with a keen perception and powerful analytical skills who understand economics from a global standpoint.

School of Science and Technology

[Departments]  
Mathematical Sciences/Physics/  
Nanotechnology for Sustainable Energy/  
Chemistry/Applied Chemistry for Environment/  
Bioscience/Biomedical Science/Informatics/  
Human System Interaction/

**Advanced, Hands-on Education Produces Internationally-minded Scientists and Technical Experts**

The School of Science and Technology's basic creed is "Conduct education and research into the basic principles and applications of natural science in order to contribute to human progress." The goal is to develop internationally-minded scientists and technical experts with the initiative and creativity to pioneer in undiscovered, cutting-edge frontier fields in an age when human progress and changes are occurring at a lightning pace. The School continues to teach in the small classes that have been the norm ever since its establishment. By emphasizing hands-on lessons that encompass experiments, practical exercises, and graduate research, the school trains students to find and solve problems for themselves. As well, it offers a wealth of English-language and other education necessary to produce graduates capable of getting the job done in an international setting. With government research funding among the highest in Japan, the school offers an ideal environment for researchers.

School of Business Administration

[Courses]  
Management/Accounting/Marketing/Finance/  
Business Information/International Business/

**Specialized Education Tied to the World Fosters Creative Minds for Business**

According to our conviction that the corporation constitutes the core unit of the economic system, our program focuses on helping students discover principles governing corporate behavior, in our effort at "Fostering Creative Minds for Business."

Our curriculum aims at providing students with both basic knowledge necessary for economic generalists and advanced and specialized knowledge required of professionals in specific fields. The School's education and research activities are closely linked to the present state of the business world.

School of Policy Studies

[Departments]  
Policy Studies/Applied Informatics/  
Urban Studies/International Policy Studies/

**Fostering the Power to Take Action in Solving the World's Problems**

The School of Policy Studies comprises four Departments: Policy Studies, which fosters the ability to make concrete policy proposals in response to world problems, such as environmental issues, public affairs, and language and culture issues; Applied Informatics, which helps students explore information systems that will contribute to a fair society that benefits everyone; Urban Studies, which fosters the capability to create safe and comfortable urban areas; and International Policy Studies, which pursues peace building, international development and protection of human rights; with students striving to come up with appropriate policies for the problems and challenges that face the world, based on a philosophy of "Coexistence between people and nature, coexistence among people." The school turns out people with superior English communication and ICT skills who can use their specialized knowledge in an international setting and in the ever-advancing information age. The aim of the school is to produce people who "think globally and act locally;" people who have the imagination and the power to identify problems and then come up with policies to solve them.

School of Human Welfare Studies

[Departments]  
Social Work/Social Organization Development/  
Holistic Human Sciences/

**Contributing to improving the quality of human life and society by providing them with solutions**

The School of Human Welfare Studies aims to train individuals who contribute to improving the quality of human life and society by providing them with solutions to the problems related to mankind, society, and their transactions. The School of Human Welfare Studies aims to become a "center of practical science" through its rigorous research and academic programs.

The academic programs at the School of Human Welfare Studies aim to educate professionals and citizens who contribute to the society and act upon the School's missions which emphasize: Compassion—nurturing a generous understanding of others, Comprehensiveness – fostering flexible and holistic views, and Competence – developing advanced solving skills to solve various social welfare and health issues.

The School of Human Welfare Studies is composed of three departments: the department of Social Work, the department of Social Organization Development, and the department of Holistic Human Sciences. Each department offers unique research and academic programs related to its respective areas of study. In addition, courses shared by the three departments foster the School's solidarity.

School of International Studies

[Department]  
International Studies/  
[Courses]  
North American Studies/Asian Studies/

**Fostering students to become world citizens with multiple abilities**

The general objective of the School of International Studies (SIS) is to equip students with the ability to understand and analyze issues relating to international affairs. The specific objectives for students are to enable them to achieve a good command of foreign languages, to provide perceptual skills in looking at the world through an interdisciplinary approach, and to encourage students to examine Japan and the world with historical and contemporary insights, using the following three approaches: cultures/languages, societies/politics and economics/management. Students select their region of emphasis, which is either North America or Asia including Oceania. The SIS seeks to provide an environment that fosters an international attitude and a deep understanding of the world, while training students to become world citizens with an international spirit, broad perspective and flexibility.

School of Education

[Department]  
Education/

**Preparing high-quality educators who have the three strengths of "execution", "educational capability" and "leadership", while understanding children**

In recent years, the environment surrounding education has been in chaos and there are a host of problems involving children such as bullying, class breakdown, children who refuse to go to school and declining academic standards. Meanwhile, the demands of society toward education have been increasing, causing problems that cannot be handled only by teachers working in the field. The educational capability of society as a whole has to be regenerated, while taking into consideration all the educational activities of society, including those conducted by schools, households and local communities. Kwansai Gakuin set up the School of Education in April 2009, with the aim of preparing trusted and high-quality educators (teachers of elementary schools and kindergartens) and childminders, as well as supporters of various educational activities.



**The Graduate Course in UN and Foreign Affairs Studies (April, 2017)**

The Graduate Course in UN and Foreign Affairs Studies, a minor program for graduate students, will be launched in 2017. The English-medium program, in which experienced KGU lecturers will be intensively employed for its practical courses, will be jointly offered by multiple graduate schools of KGU. Internships will be compulsory for completing the program.



## Kwansei Gakuin Kindergarten



### Caring for Children, Each of Whom God Loves

Founded in 1891 as a kindergarten affiliated with Hiroshima Eiwa Jogakko (now Hiroshima Jogakuin), Kwansei Gakuin Kindergarten is celebrating its 125th anniversary this year. It aims to put into practice an approach to childcare based on Christian values, one that “cherishes children, each of whom was given life and individuality by God.” The building, constructed primarily of wood, has a peaceful atmosphere and many spaces where children of different ages can interact. The grounds provide a forest-like natural setting where children can play and learn amidst abundant greenery. The kindergarten also contributes in a variety of ways to promoting children’s education in the local community, and it serves as a training facility for students in the Department of Early Childhood and Elementary Education of the School of Education and the Child-care Program of Seiya Junior College.

## Kwansei Gakuin Elementary School



### Cultivating World Citizens

Kwansei Gakuin Elementary School is located in Takarazuka City, near the famous Takarazuka Revue and the Osamu Tezuka Manga Museum. “Mastery for Service,” the school’s motto proposed in 1912 by Kwansei Gakuin’s fourth Chancellor, C.J.L. Bates, is interpreted to “Self-Discipline for Society and Humanity” at this school. To this end, the Elementary School offers an all-round education based on Christianity. Placing high value on each student’s individual gifts, the Elementary School’s mission is to create internationally-minded citizens who can take pride in their society. The children study the English language, and receive an international education throughout the entire curriculum in addition to carefully crafted academic study of the stipulated subjects in the Japanese language. Through various international exchanges, including the Canada Communication Tour, students have the opportunity to develop real communication skills they will carry with them for the rest of their lives.

## Kwansei Gakuin Junior High School



### Live Bright and True; Dream for Tomorrow

The junior high school has as its philosophy “with a thankful heart and prayer to achieve Mastery for Service.” Having a thankful heart nurtures a rich, empathic and beautiful soul that will try to understand the pain of others. Thankfulness and prayer builds the courage to withstand difficulties and a noble spirit that thinks of others first. From 2012 this education has been available to girls, allowing the boys and girls to respect each other while striving for excellence. The five traditional educational pillars – Christian principles, reading, English, physical education, and the arts – provide a curriculum to develop a well-rounded student. Chapel services are held daily, allowing the students to become familiar with many bible passages and hymns, as well as giving them a chance to hear sermons from a variety of teachers and speakers. Once a week, the students are in charge of chapel service, which give them practice in public speaking among other things. There are also many camps, training retreats and other events and activities that teach the students the importance of cooperating with others and the need to think of others first. There are also trips to India and New Zealand, allowing the students to experience foreign cultures first hand. The education is strengthened and continued as graduates act as club coaches and camp leaders, serving as good role models for the students by directly demonstrating how to lead and serve others.



## Kwansei Gakuin Senior High School



### Helping Students Discover Their Potential

Kwansei Gakuin Senior High School (KGHS) values its traditional atmosphere of freedom fostering responsibility and critical thinking. The school’s Christian education encourages knowledge of self and God, sensitivity to others, and service. The school follows the F.S.I. philosophy of education, which stands for; Foundation—mastering the basics; Specialty—becoming “an expert” in specific subjects; and Integration—bringing together all knowledge. Also third-year students choose specialized electives from a wide range of subjects. Through a three-year process, all students “integrate” their learning and skills through research and the writing of a graduation thesis. In 2014, KGHS was designated a Super Global High Schools by the Ministry of Education, Culture, Sports, Science & Technology in Japan. This project involves giving various opportunities to students to deepen their understanding of global issues while also developing their communication and leadership skills. In addition, its highly competitive and award-winning clubs foster character development, nurture friendship, and encourage the discovery of hidden talents. Most graduates proceed to KGU by recommendation. Located on the Nishinomiya Uegahara Campus, some of the Senior High School’s students are able to take electives taught by University professors and enroll in the University’s English Intensive Program.

## Senri International School of Kwansei Gakuin, Middle and High Schools Osaka International School of Kwansei Gakuin



### An International Environment Offering a Rich Educational Experiences

The Senri International Campus is home to Osaka International School (OIS) and Senri International School, Middle and High Schools (SIS). OIS and SIS were founded to bring together, for the benefit of returnee, local and international residents of the Kansai region the best of Japanese and non-Japanese educational ideas, systems and techniques in two schools which share a building, programs, curricula, philosophies, experiences and dreams. This unique relationship is a driving force for innovation and the schools are leaders in implementation of the International Baccalaureate curriculum. OIS was the first three programme (PYP, MYP, DP) school in the country and SIS now offers the IBDP through this unique relationship. Students on the campus comprise roughly one third non-Japanese, one third returnee and one third domestic students. The faculty and staff draw on each others’ skills and experiences to provide educational experiences for students that are rich and diverse, preparing them for the challenges and opportunities of the ever more interconnected world of the 21st century.

## Seiya Junior College

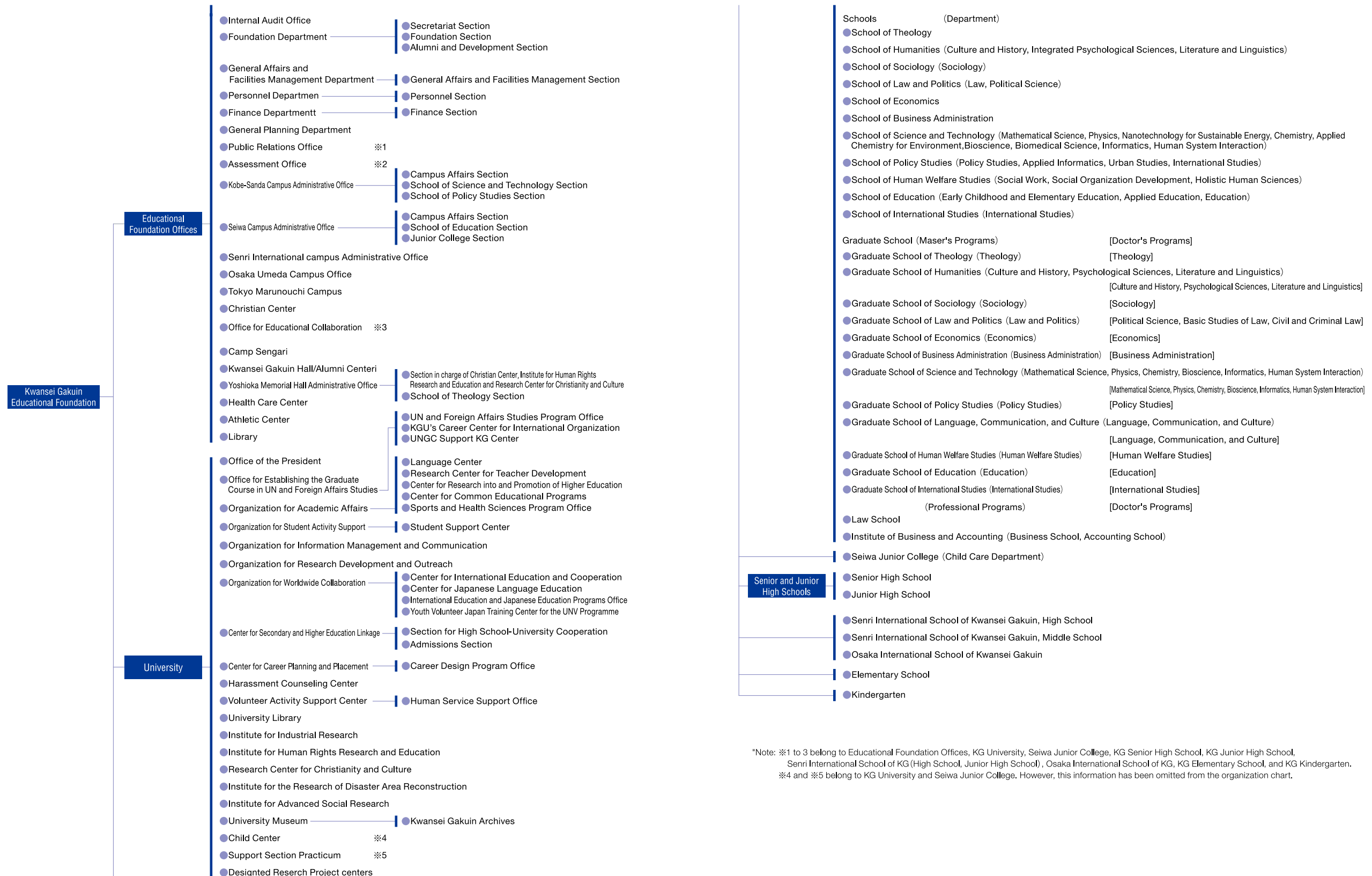


### Fostering Childcare Workers Filled with a Deep Sense of Responsibility and Joy in Supporting Children’s Growth

As a pioneer in fostering childcare workers based on a long tradition of cultivating a Christian spirit and educational techniques, Kwansei Gakuin Seiya Junior College has trained numerous childcare professionals. The curriculum is designed to make full use of the two-year enrollment period, enabling students to earn the type2 kindergarten teaching certificate and certificate of nursery teacher qualification as well as the qualifications required of social welfare workers, the children’s social worker 2nd class license, and qualified babysitter. Emphasis is placed on hands-on education through practical training in small classes and at the Seiya Kindergarten and Nursery Center. Students who complete the two-year junior college program and wish to continue their training in childcare can make use of available transfer admission systems, including that for KGU’s School of Education (where they can obtain the type1 kindergarten teaching certificate), and the School of Human Welfare Studies.

# Organization Chart

As of April 1, 2016



\*Note: ※1 to 3 belong to Educational Foundation Offices, KG University, Seiwa Junior College, KG Senior High School, KG Junior High School, Senri International School of KG (High School, Junior High School), Osaka International School of KG, KG Elementary School, and KG Kindergarten. ※4 and ※5 belong to KG University and Seiwa Junior College. However, this information has been omitted from the organization chart.

## ● Main Officers (April,2016)

Chair of the Board of Trustees	Akira Miyahara	Trustee	Naomi Hiura
Vice-Chair of the Board of Trustees, President	Osamu Murata	Trustee	Ippei Murakami
Managing Trustee, Chief Executive Administrator	Masaru Shimizu	Trustee	Akira Ichikawa
Administrative Trustee	Kazuo Hiramatsu	Trustee	Taro Ohashi
Administrative Trustee, Vice-President	Shoichi Ito	Trustee	Tetsuya Kawakami
Administrative Trustee, Vice-President	Yukihiro Ozaki	Trustee	Masayoshi Takeda
Administrative Trustee, Vice-President	Masanobu Kosuga	Trustee	Yosaku Fuji
Administrative Trustee, Vice-President	Jyunichi Nagamine	Trustee	Hirota Mizugaki
Administrative Trustee, Vice-President	Takayasu Yanagiya	Trustee	Kenjiro Miyatake
Trustee, Chancellor	Musubi Tabuchi	Trustee	Tokuhsa Shimada
Trustee, Head of Senri International School	Mayumi Ito	Inspector	Noboru Sawa
Trustee, Principal, Senior High School	Yutaka Edagawa	Inspector	Toshiyuki Suzuki
Trustee, Dean of Chaplains	Jyo Funaki	Inspector	Kanji Miyamoto
Trustee	Ruth M. Grubel	Inspector	Syunsaku Yagi
Trustee, Vice-President	Takahiro Shinyo		

## ● No. of Students (May,2016)

### [Kwansai Gakuin University]

	1st year	2nd year	3rd year	4th year	Total (male, female)
School of Theology	37	31	34	47	149 (100, 49)
School of Humanities	842	811	674	869	3,196 (1,028, 2,168)
School of Sociology	705	667	621	763	2,756 (1,225, 1,531)
School of Law and Politics	711	677	659	858	2,905 (1,755, 1,150)
School of Economics	715	705	645	842	2,907 (2,053, 854)
School of Business Administration	738	606	671	752	2,767 (1,606, 1,161)
School of Science and Technology	796	550	491	569	2,406 (1,794, 612)
School of Policy Studies	602	587	535	660	2,384 (1,076, 1,308)
School of Human Welfare studies	303	297	311	389	1,300 (544, 756)
School of Education	364	373	353	390	1,480 (495, 985)
School of International Studies	338	297	274	339	1,248 (432, 816)
<b>Total</b>	<b>6,151</b>	<b>5,601</b>	<b>5,268</b>	<b>6,478</b>	<b>23,498 (12,108, 11,390)</b>

### [Kwansai Gakuin University Graduate School]

	Master's Programs	Doctoral Programs	Professional degree Programs	Total (male, female)
Graduate School of Theology	13	4	-	17 (10, 7)
Graduate School of Humanities	83	38	-	121 (40, 81)
Graduate School of Sociology	21	10	-	31 (13, 18)
Graduate School of Law and Politics	22	6	-	28 (22, 6)
Graduate School of Economics	15	3	-	18 (12, 6)
Graduate School of Business Administration	17	4	-	21 (10, 11)
Graduate School of Science and Technology	293	30	-	323 (262, 61)
Graduate School of Policy Studies	18	6	-	24 (18, 6)
Graduate School of Language, Communication, and Culture	44	8	-	52 (17, 35)
Graduate School of Human Welfare Studies	27	10	-	37 (13, 24)
Graduate School of Education	13	2	-	15 (7, 8)
Graduate School of International Studies	4	2	-	6 (2, 4)
Law School	-	-	81	81 (54, 27)
Institute of Business and Accounting	-	23	251	274 (193, 81)
<b>Total</b>	<b>570</b>	<b>146</b>	<b>332</b>	<b>1,048 (673, 375)</b>

### [Kwansai Gakuin Elementary School, Junior and Senior High Schools]

	1st year	2nd year	3rd year	4th year	5th year	6th year	Total (male, female)
Senior High School	382	383	306	-	-	-	1,071 (771, 300)
Junior High School	236	242	239	-	-	-	717 (432, 285)
Elementary School	94	90	90	90	90	90	544 (271, 273)

### [Seiwa Junior College]

	1st year	2nd year	Total (female only)
Child Care Department	164	163	327

### [Kwansai Gakuin Kindergarten]

	Total (male, female)
Kindergarten	227 (115, 112)

### [Senri International School & Osaka International School of Kwansai Gakuin]

	1st year	2nd year	3rd year	Total (male, female)
Senri International School (High School)	90	83	103	276 (93, 183)
Senri International School (Middle School)	76	76	81	233 (83, 150)

	Kindergarten	Elementary School	Middle School	High School	Total (male, female)
Osaka International School	26	103	68	81	278 (130, 148)

## ● No. of Faculty (May,2016)

### [Kwansai Gakuin University]

	Professor	Associate Professor	Assistant Professor	Laboratory Technician/ Contract Assistant/ Laboratory Assistant	Total
School of Theology	7	4	-	2	13
School of Humanities	64	5	-	1	70
School of Sociology	35	15	-	1	51
School of Law and Politics	48	5	-	-	53
School of Economics	40	12	4	-	56
School of Business Administration	38	5	-	8	51
School of Science and Technology	78	19	15	25	137
School of Policy Studies	43	13	14	2	72
School of Human Welfare Studies	29	8	2	4	43
School of Education	32	13	1	-	46
School of International Studies	25	6	14	-	45
Graduate Schools	47	14	-	4	65
Others	15	7	37	-	59
<b>Total</b>	<b>501</b>	<b>126</b>	<b>87</b>	<b>47</b>	<b>761</b>

### [Kwansai Gakuin Elementary School, Junior and Senior High Schools]

	Full Time Teacher (Instructor)	Contracted Teacher	Total
Senior High School	44	5	49
Junior High School	32	5	37
Elementary School	26	5	31

### [Senri International School & Osaka International School of Kwansai Gakuin]

	Full Time Teacher	Part Time Teacher	Total
Senri International School	43	24	67
Osaka International School	31	6	37

### [Seiwa Junior College]

	Professor	Associate Professor	Assistant Professor	Total
Child Care Department	5	5	3	13
Others	1	-	-	1
<b>Total</b>	<b>6</b>	<b>5</b>	<b>3</b>	<b>14</b>

### [Kwansai Gakuin Kindergarten]

	Teacher	Contracted Teacher	Short-term teaching staff	Total
Kindergarten	10	7	4	21

### [Kwansai Gakuin Staff]

Full-Time Staff				Others	Total
Administrative Staff	Medical Staff	Technical Staff	Educational Technical Staff		
378	7	1	9	97	492

## ● No. of Graduates (March 31st, 2016)

[Graduates in 2015]

Bachelor	5,506
Master's degree	251
Doctoral degree	51
Professional degree	132
Seiwa Junior College graduates	163

[Cumulative totals of graduates]

Bachelor	206,829
Master's degree	8,802
Doctoral degree	977
Professional degree	2,346
Seiwa Junior College graduates	11,858

## ● No. of International Students (May, 2016)

[Undergraduate • Graduate Students]

Country	Undergraduate	Graduate	Exchange/Short-term foreign student	Total
China	244	78	19	341
Yemen	-	1	-	1
Algeria	-	1	-	1
Australia	-	-	7	7
Austria	-	-	1	1
Brazil	-	-	1	1
Cameroon	-	2	-	2
Canada	1	-	11	12
Denmark	-	-	2	2
Dominica	-	1	-	1
Egypt	-	2	-	2
Finland	1	1	1	3
France	-	2	6	8
Germany	2	1	16	19
Honduras	-	1	-	1
Iceland	-	-	1	1
India	-	1	-	1
Indonesia	4	14	7	25
Italy	1	-	-	1
Korea	126	9	6	141
Latviya	-	-	2	2
Malawi	1	-	-	1

Country	Undergraduate	Graduate	Exchange/Short-term foreign student	Total
Malaysia	1	-	2	3
Mexico	1	-	1	2
Myanmar	1	-	-	1
Nepal	1	-	-	1
Netherlands	-	-	4	4
New Zealand	-	-	1	1
Nigeria	-	1	-	1
Norway	-	-	8	8
Oman	-	3	-	3
Philippines	-	1	-	1
Saudi Arabia	-	14	-	14
Singapore	-	-	2	2
South Africa	-	-	1	1
Sweden	1	-	-	1
Switzerland	1	-	-	1
Taiwan	8	3	11	22
Thailand	2	5	1	8
Turkey	1	-	-	1
U.K.	1	-	5	6
U.S.A	3	-	48	51
Uganda	7	2	-	9
Vietnam	-	4	4	8
<b>Total</b>	<b>408</b>	<b>147</b>	<b>168</b>	<b>723</b>

## ● Introduction situation of research expense from outside the school (2015)

	No. of cases	Amount (Yen)
Sponsored Research Projects (including ongoing projects)	23	187,838,460
Collaborative Research Projects (including ongoing projects)	58	94,484,405
Donation Research	29	31,090,000
Grant-in-Aid for Scientific Research	257	523,230,000
<b>Total</b>	<b>367</b>	<b>836,642,865</b>

## ● Donation situation (2015)

	No. of cases	Amount (Yen)
Individual	2,612	301,698,050
Company	57	37,191,147
Association	135	222,474,014
<b>Total</b>	<b>2,804</b>	<b>561,363,211</b>

## ● Financial Data (2015)

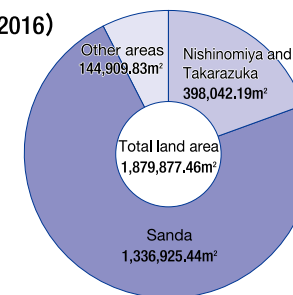
[Income and Expenditures for Fiscal Year 2015] (Unit: Millions of Yen)

Category	Budget	Actual	Difference
Income			
Student fees	30,766	30,473	293
Processing fees	1,484	1,372	112
Donations	395	737	△342
Subsidies	4,356	4,254	102
Income from asset management	461	485	△24
Gain/loss on sale of assets	-	-	-
Income from businesses operations	903	896	7
Other expenditures	910	993	△83
<b>Total Income attributable to the Year</b>	<b>39,276</b>	<b>39,211</b>	<b>65</b>
Transfers to capital fund	△5,280	△3,981	△1,299
<b>Total Consumption Income</b>	<b>33,996</b>	<b>35,229</b>	<b>△1,233</b>
Expenditures			
Personnel	22,312	22,219	93
Education and research expenditure	13,847	13,082	765
Administration fees	938	1,008	△70
Interest on loans	102	102	0
Other expenditures	1,018	210	808
<b>Total expenditures attributable to the Year</b>	<b>38,217</b>	<b>36,621</b>	<b>1,596</b>
Excess of Consumption Income	△4,222	△1,392	
Excess of Consumption Income carried forward from the Previous Year	△7,410	△7,743	
Excess of Consumption Income carried forward to the Next Year	△11,632	△9,136	

[Balance Sheet (as of March 31st, 2016)] (Unit: Millions of Yen)

Category	Current Year	Previous Year	Fluctuation
Assets			
Tangible Fixed Assets	104,784	105,124	△339
Other Fixed Assets	49,153	42,415	6,738
Current Assets	23,692	28,240	△4,548
<b>Total Assets</b>	<b>177,629</b>	<b>175,779</b>	<b>1,850</b>
Liabilities, Capital Fund, and Excess of Consumption Expenditure			
Category	Current Year	Previous Year	Fluctuation
Fixed Liabilities	16,311	16,714	△403
Current Liabilities	12,156	12,492	△336
<b>Total Liabilities</b>	<b>28,467</b>	<b>29,205</b>	<b>△738</b>
Capital Fund (Category I)	149,379	145,421	3,958
Capital Fund (Category II)	526	519	7
Capital Fund (Category III)	6,172	6,156	16
Capital Fund (Category IV)	2,221	2,221	0
<b>Total Capital Fund</b>	<b>158,298</b>	<b>154,317</b>	<b>3,981</b>
Excess of Consumption Expenditure	△9,136	△7,743	△1,393
<b>Total Liabilities, Capital Fund and Excess of Consumption Expenditure</b>	<b>177,629</b>	<b>175,779</b>	<b>1,850</b>

## ● Land Area (May, 2016)



## ● Alumni Network (May, 2016)

89 Alumnus Branches in Japan

Hokkaido	Shiga	International Airport)	Kakogawa	Kure
Tohoku	Kyoto	East Osaka	Takasago	Yamaguchi Prefecture
Ibaragi	Kyoto North	Yao	Himeji	Tokushima
Gunma	Nara	Kashiwara	Tatsuno	Kagawa
Tochigi Prefecture	Wakayama	Matsuhafuji	Ako	Toyo
Tokyo	Takatsuki · Shimamoto	Kawachi-nagano	Nishiwaki	Imabari
Kanagawa	Ibaraki	Sanda	Ono-Kato	Matsuyama
Niigata Prefecture	Suita · Settsu	Kawanishi	Kasai	Nanyo
Nagano Prefecture	Hokusetsu	Takarazuka	Tajima	Kochi
Fujisan (Mt.Fuji)	Hirakata	Itami	Ryotan	Kitakyusyu
Shizuoka	Neyagawa	Amagasaki	Awaji	Fukuoka
Hamamatsu	Kadoma	Nishinomiya	Tottori	Saga
Toyama	Moriguchi	Ashiya	Yonago	Nagasaki o
Ishikawa Prefecture	Daitou	Kwansei Gakuin	Shimane	Kumamoto
Fukui	Osaka	Kobe	Okayama	Oita
Nagoya	Sakai	Arima · Kitakobe	Tsuyama	Miyazaki
Gifu	Izumi	Miki	Hiroshima Prefecture East	Kagoshima
Mie	Kanku (Kansai)	Akashi	Hiroshima	Okinawa

26 Branches Overseas

New York	Singapore
Chicago	Indonesia
Seattle	Manila
San Francisco Silicon Valley	Delhi
Toronto	Australia
Los Angeles	Dubai
Vancouver	Germany
Brazil	Paris
South Korea	United Kingdom
Beijing	
Shanghai	
Guangzhou	
Hong Kong	
Taiwan	
Hanoi	
Bangkok	
Kuala Lumpur	



## Join Kwansei Gakuin University Alumni Network on "Linked In" (in English)

Kwansei Gakuin University is used not only in Japan but has members throughout the world. In becoming a member of Kwansei Gakuin University Network, you will help make that network even stronger. The Kwansei Gakuin Global Network is made up of alumni, students, and parents interested in building and maintaining connections with each other and the university. Regardless of where you live, what you do, you can join the Kwansei Gakuin University community for professionals.



## Official Facebook Page (in English)

You can find a variety of information about Kwansei Gakuin University and view beautiful campus landscapes on this page. Please visit the page by scanning the QR code on KG's mobile site or Facebook's "f" logo button on KG's official website: <https://www.facebook.com/KGUglobal>  
Account Name: Kwansei Gakuin University



## KG FACES (in English, Chinese, Korean)

In these videos, Japanese and international students as well as teaching staff at Kwansei Gakuin University are interviewed. They talk about their research and other activities as well as about the attractiveness of the university. To view these videos, please visit the following site: <http://www.kwansei.ac.jp/movie/index.html>



## Kwansei Gakuin 125th anniversary movies

Kwansei Gakuin has produced two PR movies to commemorate its 125th anniversary — *K.G. 1 2 GO!*, which describes the enjoyable campus life, and *K.G. 7 Campuses*, which features KG's seven beautiful campuses. These two movies and many other videos that introduce the activities of KG's researchers and students as well as events are available on YouTube. Please visit KG on YouTube at <http://www.youtube.com/user/KGPublicity>



K.G. 7 Campuses



K.G. 1 2 GO!

## KGU Research in 60 seconds (in English)

These are series videos where professors working at KGU talk about their studies and the attractiveness of those.



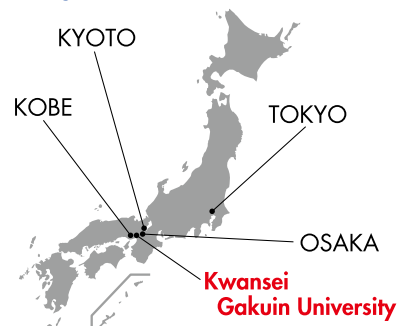
# Around The University



Our main university campus is adjacent to Kobe, surrounded by a quiet residential area. The campus features Spanish mission style buildings and an abundance of lush vegetation. The beautiful landscape, which also includes a stream and pond, helps to contribute to the campus's reputation as one of the most beautiful in Japan. Kwansei Gakuin University is a comfortable place for learning and everyday living.

## Cities near the University

Kwansei Gakuin University is located in Hyogo Prefecture. Near Hyogo Prefecture, are the prefectures of Osaka, and Kyoto, which are together recognized as Japan's second largest urban area after the Tokyo metropolitan area. The area is rich in historic architecture and cultural assets designated as national treasures, making the place ideal for learning about Japanese culture.



## Kobe

Kobe is the seat of the Hyogo prefectural government. Since ancient times, Kobe has developed as a port city, embracing various foreign cultures. Also known as a center of youth fashion and culture, Kobe is a sophisticated city that enjoys great popularity.

With the opening of Kobe Port in 1868, overseas food cultures began to be introduced. Kobe's consumptions of bread, cakes and tea is now ranked among the highest in Japan.



## Osaka

Osaka was formerly Japan's political and economic center, and used to be called the "Kitchen of the Nation." Osaka has developed many unique foods, performing arts styles and other cultural traditions. Takoyaki is one of the representative foods of Osaka, where you can enjoy many popular gourmet foods. Takoyaki is a fried ball of gooey dough containing diced octopus.

## Kyoto

Kyoto is renowned as an ancient capital with more than 1000 years of history. Fascinated by its townscapes that so well represent Japanese tradition and culture, many people visit Kyoto from other parts of Japan and overseas.



## Popular areas that are easy to live in

### Around Nishinomiya Kitaguchi Station

The town around Kwansei Gakuin University has well-developed shopping facilities, and is popular among Kansai people as a place desirable to live in.



### Kotoen

Kotoen, where the nearest station is located, is a district with many educational facilities. Quiet residential areas and beautiful townscapes with rich greenery make Kotoen very attractive.

### Sanda

Sanda where the Kobe-Sanda campus is located, is a new town blessed with abundant greenery. Located within commuting distance of Osaka and Kobe, Sanda has large-scale shopping centers.



### International cuisines available in the vicinity of campus

A wide variety of restaurants serve Italian, Chinese, Korean, Indian, and Indonesian foods in the vicinity of Kotoen Station.

## Recommended facilities near the campus

### Hyogo Performing Arts Center

The Hyogo Performing Arts Center stages a variety of performing arts programs, including concerts, operas, ballets, plays, and traditional performing arts. The Center also offers low-priced events that are ideal for students.



### Nishinomiya City International Association

At this center you can view reference materials, participate in events, and exchange information to deepen international mutual understanding. Japanese and foreign volunteer staff members get together to promote cross-cultural exchange.

