

# MTE

## MASTER OF TECHNOLOGY ENTREPRENEURSHIP

## 科技創業碩士

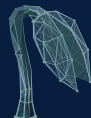


\* Chinese Service Center for Scholarly Exchange  
# Registered Technology Transfer Professional

### Build Your Tech Venture from the Ground Up

With the core goal of supporting students to register their own startups before graduation, MTE provides integrated technical and entrepreneurial training, nurturing professionals with dual technical and business capabilities. Leveraging PolyU's **Mainland Translational Research Institutes (MTRI)** network, it offers an exclusive hands-on platform — granting access to real industrial projects, expert mentorship, and market validation opportunities. Graduates will emerge as core drivers of innovation, contributing to economic development and fostering a sustainable innovation ecosystem whether they launch startups or lead transformation in existing organisations.

PolyU Micro Fund Scheme



Up to **HKD 120K**

HKSTP Incubation Programme



Up to **HKD 1.29M**

MTRI Project Fund



**Additional Funding for Selected Projects**

**TOTAL FUNDING: OVER HKD 1.4M**

# Curriculum

Students are required to complete a total of 37 credits, comprising:

## 5 Core Subjects (30 credits)

### Technology Core Subjects (3 credits)

#### Choose ONE (3 credits each):

- Future Technologies: New Materials, Energy and Environmental Innovation
- Future Technologies: Health Sciences and Medical Innovation
- Future Technologies: Artificial Intelligence and Emerging Industries

### Entrepreneurship Core Subjects (6 credits)

#### Choose TWO (3 credits each):

- Introduction to Technology-based Entrepreneurship
- Entrepreneurial Finance and Legal Considerations

### Project Core Subjects (21 credits)

#### Complete TWO projects (21 credits):

- Project Part 1: Research (6 credits)
- Project Part 2: Start-up (15 credits)※

## 2 Elective Subjects (6 credits)

#### Choose TWO (3 credits each):

- Design and Development of Technological Product
- Entrepreneurial Strategy and Business Venturing
- Technology Entrepreneurship Internship
- Entrepreneurial Workshops

You may also choose from Technology Core Subjects that you have not previously studied.



※ Part of the contact hours shall be completed at the MTRI.

## Academic Integrity and Ethics in Business (1 credit)

PolyUs established MTRI in over **10 cities** in Mainland China, covering cutting-edge fields such as artificial intelligence, biomedical technology, new materials, and intelligent manufacturing. These institutes are closely aligned with local industries and policies, providing students with exclusive practical scenarios and resource connections.

**10+**  
**MTRI**



# Entrance Requirements

## Basic Requirements

Applicants must:

- Hold a Bachelor's degree recognised by PolyU; and
- Either pass PolyU's English written test or meet the University's minimum English language requirements if their native language is not English and their Bachelor's degree or equivalent qualification was awarded by a non-English medium institution.

## Preferred Background

- Prior entrepreneurial experience (e.g., founding/co-founding a start-up); or
- At least 2 years of relevant work experience in technology, business, or innovation.

## Tuition Fee (2027/28)

Total Fee: HKD 550,800  
(HKD 15,300 per credit)

**APPLY NOW**

