



# SUSTAINABLE DEVELOPMENT GOALS



SUNG KYUN KWAN  
UNIVERSITY (SKKU)

SKKU SUSTAINABILITY REPORT 2025

# TABLE OF CONTENTS

	PAGE
SKKU at a Glance .....	01
SKKU Research & Reputation .....	02
SKKU by the Numbers .....	03
SKKU ESG & News .....	04

<b>SDG 01:</b> No Poverty .....	05
<b>SDG 02:</b> Zero Hunger .....	06
<b>SDG 03:</b> Good Health and Well-Being .....	07
<b>SDG 04:</b> Quality Education .....	08
<b>SDG 05:</b> Gender Equality .....	09
<b>SDG 06:</b> Clean Water and Sanitation .....	10
<b>SDG 07:</b> Affordable and Clean Energy .....	11
<b>SDG 08:</b> Decent Work and Economic Growth .....	12
<b>SDG 09:</b> Industry, Innovation and Infrastructure .....	13
<b>SDG 10:</b> Reduced Inequalities .....	14
<b>SDG 11:</b> Sustainable Cities and Communities .....	15
<b>SDG 12:</b> Responsible Consumption and Production .....	16
<b>SDG 13:</b> Climate Action .....	17
<b>SDG 14:</b> Life Below Water .....	18
<b>SDG 15:</b> Life on Land .....	19
<b>SDG 16:</b> Peace, Justice and Strong Institutions .....	20
<b>SDG 17:</b> Partnerships for the Goals .....	21

# SKKU AT A GLANCE



Samsung Library Exterior

Sungkyunkwan University (SKKU) is a prestigious institution of higher learning with a legacy spanning more than six centuries. Established in 1398 at the dawn of the Joseon Dynasty (1392–1910), SKKU has nurtured generations of leaders who have shaped the course of Korea's history and development.

Today, SKKU embraces globalization and continues to rise as a leading university in Asia and the world, further strengthened by its strategic partnership with **Samsung**. Through vibrant academic exchange, innovative programs, and global research collaboration, SKKU remains committed to advancing knowledge and inspiring future generations.

627 Years of History,  
Inspiring Future and Grand Challenge



## BRIEF TIMELINE

- 1398**  
Sungkyunkwan founded
- 1895**  
Reformed into institution
- 1946**  
Reorganized into college
- 1953**  
Graduate School
- 1978**  
Natural Sciences Campus
- 1996**  
Samsung-SKKU partnership launched (Samsung group acquires the university foundation)
- 1997**  
College of Medicine
- 1998**  
600<sup>th</sup> anniversary
- 2005**  
Established SAINT, University College
- 2010**  
Asia Top 10, Global Top 50
- 2013**  
SKKU Institute for Convergence
- 2022**  
Established SIEST
- 2022**  
ESG Committee
- 2023**  
SKKU WAVE launched (first global online collaborative course in Korea)

# SKKU RESEARCH (2022–2025) (~2025.08.31)



Scholarly Output

26,154



Citation Count

257,708

Field-Weighted  
Citation Impact

1.82

## Top-Cited SDGs



228,056



62,720



15,777



8,044



Scholarly Output

10,693

2.46

Field-Weighted  
Citation Impact



Citation Count

138,220

## SDG-Related Publications

## RANKINGS AND REPUTATION

87<sup>th</sup>

THE World University  
Rankings 2026  
(#2 Private University  
in South Korea)

THE

Samsung  
Hospital Ranked

3<sup>rd</sup>  
Globally

Partnered  
with  
**SAMSUNG**

16<sup>th</sup>

QS Asia University  
Rankings



1<sup>st</sup> NO  
POVERTY



17<sup>th</sup>

in the  
world

9<sup>th</sup> INDUSTRY, INNOVATION  
AND INFRASTRUCTURE



19<sup>th</sup>

in the  
world

7<sup>th</sup> AFFORDABLE AND  
CLEAN ENERGY



23<sup>rd</sup>

in the  
world

126<sup>th</sup>

QS World University  
Rankings



Highly Cited  
Researchers (HCR):  
**No.1** among  
private  
universities in Korea  
(10 researchers/2024)

Samsung Medical Center:  
**Ranked No.1**  
in the Asia-Pacific region for  
Cancer and Respiratory Care

THE Asia University  
Rankings:  
**19<sup>th</sup>**  
(No.1 among private  
universities in Korea)

# SKKU BY THE NUMBERS

Scholarship Amount  
per Student **\$7,000**



USD for Graduate

**\$2,500**

USD for Undergraduate

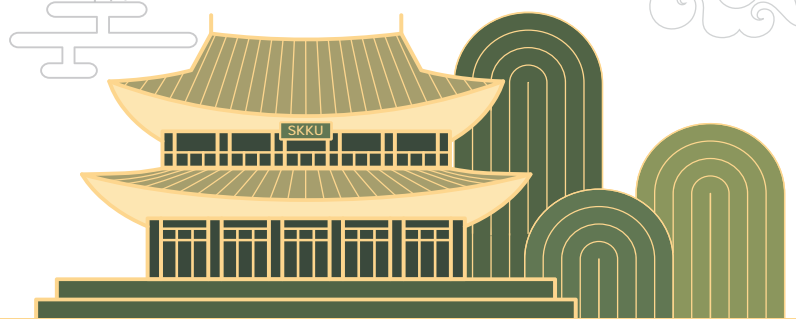
**1,529**  
Faculty



**28,256**  
Graduate/  
Undergraduate  
Students



**627<sup>th</sup>** Anniversary



Global Network

**566**  
Universities



**73.8%**  
Employment Rate



**3** SKKU Contract Programs with  
**SAMSUNG**  
Semiconductor Engineering, Intelligent  
Software, and Battery Technology



# SKKU ESG



## SKKU ESG COURSES

- Global Leadership and Sustainability
- Technology, Society, and Sustainability
- Diversity and Inclusive Governance
- Climate Change: Science, Technology, and Policy
- Circular Economy
- ESG Management

The UNESCO Chair for the Promotion of Sustainable Energy System and Clean Environment established at SKKU, with the scope of UNESCO's Renewable and Alternative Energies Programme, is aimed at promoting the development of new technologies and paradigms around energy and environment with a view of supporting member states to achieve Sustainable Development Goals (SDGs).

By contributing to the Environmental, Social, and Governance (ESG), SKKU can help tackle the most pressing global challenges facing humanity and the world.

In 2022, SKKU launched an intercollegiate ESG committee to oversee and enact campus ESG policies. Various ESG-related courses such as ESG Management, Technology, Society and Sustainability, and Climate Change have been provided to enhance the understanding and collaboration of all members, and in 2023, the university was selected as the first UNESCO Chair in the engineering field in South Korea.



First university in Korea to receive ESG certification from an official institution



SKKU achieves **"Silver" rating** in the Educational Organization ESG Evaluation KPCQA (Korea Productivity Center Quality Assurance)



UNESCO Chair for Sustainable Energy System and Clean Environment (2023–2026)

# SKKU NEWS

## REVIVING TRADITION AND STRENGTHENING COMMUNITY AT SKKU



SKKU's annual Yuso Culture Festival *Gohanora*, organized by the student group *Cheongnang* connects its rich historical heritage with contemporary society. In 2025, nearly 300 students in traditional attire paraded from SKKU's Confucian shrine through central Seoul. The festival featured music, dance, and symbolic ceremonies, where student voices were formally heard and acknowledged.



- SKKU Professor Nam-Gyu Park (Department of Chemical and Biomolecular Engineering) received the prestigious **2024 Eni Award in the Energy Frontiers category** for his research on perovskite solar cells.
- SKKU established the Carbon Neutrality Research Institute in 2025 to advance its net-zero campus vision through initiatives like the **SKKU Net-Zero digital twin platform**, renewable energy transition (RE100).
- SKK GSB hosted the "Sustainability Academy" for its full-time MBA program, with more than 60% international students.



1 NO POVERTY



## NO POVERTY



## Supporting Students from Low and Lower Middle Income Countries

SKKU participates in the **Global Korea Scholarship (GKS) – Outstanding Exchange Students Program**, ensuring equitable access for students from ODA-recipient countries. **Over 50% of nominees come from low and lower middle income nations**, with flexible representation for Africa and Latin America, while no single nationality from any other country exceeds 40%.



This approach reflects SKKU's commitment to reducing economic barriers for underrepresented groups and expanding opportunities for students from the global South.

Through equitable access initiatives and award-winning research, SKKU actively advances **SDG 1 (No Poverty)**. By supporting students from underrepresented regions and generating evidence-based insights into inequality, the university contributes to building more **inclusive and fair economic systems** worldwide.

## Addressing Poverty and Inequality through Research



Students from SKKU's Department of Global Economics won the grand prize at the 22<sup>nd</sup> Korea Economic Daily Thesis Competition for research on trade openness and inequality. Their study showed that **trade liberalization can ease inequality in developing countries but worsen it in advanced economies**, highlighting globalization's uneven effects.

96  
scholarly  
output5.6%  
Korean  
publications27.1% 19.8%  
international  
collaborations international  
collaboration impact1.67 973  
FWCI citation count  
FWCI: field-weighted citation impact29.3%  
publications in top  
10% journal percentiles  
by CiteScore percentile

2 ZERO HUNGER



ZERO HUNGER



## Strengthening Food Security with 1,000 KRW Meal Initiative



Since 2017, SKKU's "1,000 KRW Meal Fund" has enabled students in need to access affordable meals. Over **720,000 subsidized meals** have been provided, supported by more than **4,400 donors**. **Donation kiosks** installed across campuses facilitate convenient contributions.

## Promoting Healthy and Sustainable Campus Meals



SKKU partners with **Samsung Welstory** to provide campus meals that are healthy, affordable, and environmentally responsible, including plant-based options and sustainable sourcing.



## Student-Led Initiative Tackling Campus Food Insecurity



The "Sip-si-il-bap" program provides **free meal tickets** to students from vulnerable backgrounds. Volunteers work in campus cafeterias and deliver meal tickets directly to peers in need, promoting inclusion and social responsibility.



78

scholarly output



1.8%

Korean publications



39.7%

international collaborations

78.3%

international collaboration impact



13.78

FWCI

2,763

citation count



34.2%

publications in top 10% journal percentiles by CiteScore percentile

### 3 GOOD HEALTH AND WELL-BEING



## GOOD HEALTH AND WELL-BEING



### Samsung Medical Center: Asia-Pacific's Leading Institution for Cancer and Respiratory Care



Samsung Medical Center (SMC), SKKU's teaching hospital, was **ranked No.1 in Asia-Pacific for cancer and respiratory care** by Newsweek in 2025. SMC pioneered CAR-T therapy, precision oncology, proton therapy, and maintains large cancer registries, while fostering international collaborations.

### World-Leading Cancer Care and Global Medical Impact



SMC was ranked **3<sup>rd</sup> globally** in Newsweek 2025 "World's Best Specialized Hospitals" evaluation for cancer care.



### 30 Years of Strengthening Regional Health Networks



SMC celebrated the **30<sup>th</sup> anniversary** of its Partners Center, a network of nearly **5,800 regional medical institutions**.

The center coordinates referrals, follow-up care, and E-consult systems, enhancing regional healthcare efficiency and equity.



**9,754**  
scholarly output



**10.6%**  
Korean publications



**28.8%**  
international collaborations

**53.7%**  
international collaboration impact



**2.49**  
FWCI

**228,056**  
citation count



**37.4%**

publications in top 10% journal percentiles by CiteScore percentile

## 4 QUALITY EDUCATION



## QUALITY EDUCATION



## Open Learning through "Sungkyun Signature Class 100" Series

SKKU is expanding public access to high-quality education through its "Sungkyun Signature Class 100" program. Launched in **Spring 2024**, the initiative released six MOOC-format lectures across humanities, social sciences, and natural sciences on SKKU Online, allowing both students and the general public to learn freely.



**Season 2 in 2025** offered six freely accessible online lectures, continuing in **Season 3** with fundamental and interdisciplinary topics. SKKU also uses platforms like **ExCampus** and **K-MOOC** to share premium content, demonstrating its commitment to educational equality and its role as a global hub for open, inclusive learning.

## SKKU Social Contribution FAIR: Promoting Education Equity



Organized by **Dasomi** and **campus partners**, the **2<sup>nd</sup> SKKU Social Contribution FAIR (2025)** was a student-led, community-focused event, promoting volunteerism, inclusive education, and SDG-aligned projects, with programs supporting persons with disabilities.



**114**  
scholarly  
output



**2.9%**  
Korean  
publications



**32.5%**  
international  
collaborations

**25.4%**  
international  
collaboration impact



**2.66**  
FWCI

**1,818**  
citation count



**37.5%**

publications in top  
10% journal percentiles  
by CiteScore percentile

5 GENDER  
EQUALITY

# GENDER EQUALITY



## Advancing Gender Equality through Safe Maternity Care

Professor **Sooyoung Oh** of SMC and SKKU School of Medicine received **Korea's highest civil honor**, the Order of Civil Merit, for over 20 years of pioneering work in maternal-fetal medicine. Her leadership has strengthened safe delivery systems, expanded access to specialized care, and ensured safer motherhood for high-risk mothers and infants nationwide.



Prof. Sooyoung Oh

## Campus and Student-Led Initiatives



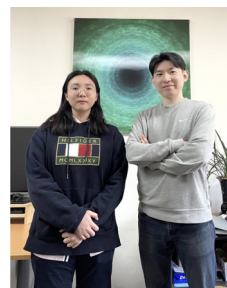
**Multiple female lounges located across SKKU campus to empower women**

## Empowering Women's Leadership in STEM



SKKU promotes gender equality in STEM by giving women students leadership opportunities in research and innovation.

Programs like the **Women Graduate Student Engineering Research Team** allow graduate students to lead projects, mentor undergraduates, and gain vital hands-on experience.



On campus, student-driven efforts foster inclusivity and dignity. The **Conscience Sanitary Pad Project**, with Hye Sanitary Pads, provides borrow-and-replenish sanitary product boxes across campus. Female student lounges in STEM colleges offer safe and supportive spaces.



**73**  
scholarly  
output



**4.8%**  
Korean  
publications



**46.6%** **84.6%**  
international  
collaborations international  
collaboration impact



**17.46** **3,214**  
FWCI citation count



**33.3%** publications in top  
10% journal percentiles  
by CiteScore percentile

## 6 CLEAN WATER AND SANITATION



## CLEAN WATER AND SANITATION



## Award-Winning Innovation in Water and Energy Sustainability

At the 5<sup>th</sup> **WaterEnergyNEXUS International Conference** in Abu Dhabi, a graduate researcher from Professor **Ga-Hyun Baek's team** at SKKU received the **Best Oral Presentation Award** for work on enhancing anaerobic digestion of food waste. Using conductive, calcium-rich materials like oyster shell biochar, the study boosted microbial activity, accelerated digestion, and increased methane yield for sustainable biogas.

## Best Oral Award

## Chaeyeon Park

Enhancing Anaerobic Digestion of Fat, Oil, and Grease (FOG) using Electrically Conductive and Calcium-Rich Waste Materials: A Comparative Performance Analysis



## Pioneering Water Sustainability Education

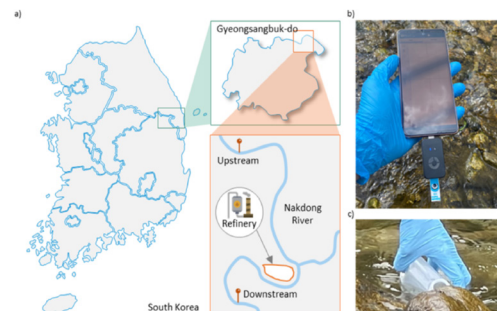


SKKU launched Korea's first **Graduate School of Water Resources**, training experts in engineering, ICT, and sustainable management with global impact.

## World's First Portable Sensor for Detection of Toxic Metals in Water



Professor **Jinsung Park's team** in Biomechatronics developed the **world's first portable electrochemical sensor** with a vibration system to detect toxic metals such as lead and cadmium. Field tests along the Nakdong River showed accuracy comparable to ICP-MS, enabling rapid on-site monitoring.



284

scholarly output



3.2%

Korean publications



43.3%

international collaborations

40.5%

international collaboration impact



3.41

FWCI

7,296

citation count



60.8%

publications in top 10% journal percentiles by CiteScore percentile

## 7 AFFORDABLE AND CLEAN ENERGY



## AFFORDABLE AND CLEAN ENERGY



## SISF 2024: Advancing Solar Energy from Earth to Space with Halide Perovskite



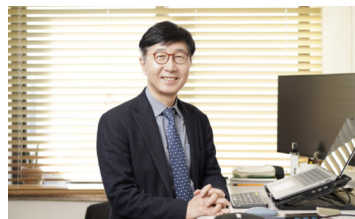
Since 2011, SKKU has hosted the **Sungkyun International Solar Forum (SISF)** annually. The 2024 forum, themed **"Halide Perovskite: From Earth to Space,"** explored next-generation solar cell technologies and energy transition strategies.

Professor **Nam-Gyu Park** highlighted perovskite technology's potential for both terrestrial and aerospace applications, emphasizing high efficiency and low production costs.



## Professor Nam-Gyu Park Receives NIMS Award 2025

Professor **Nam-Gyu Park** of SKKU's Department of Chemical Engineering received the NIMS Award 2025 from **Japan's National Institute for Materials Science** for pioneering achievements in perovskite solar cells, reinforcing Korea's global standing in sustainable energy research.



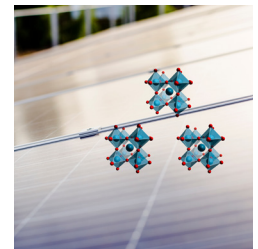
Prof. Nam-Gyu Park

## High-Performance Perovskite Solar Cells Using Natural Materials



Professor **Il Jeon** and **UNIST** joint research team

developed a high-efficiency perovskite solar cell using caramelized sucrose derivatives



as natural additives. The humin produced at 220 °C promoted crystal growth, reduced defects, and enhanced charge transport, resulting in efficient power conversion and stable performance over **1,000 hours** of continuous light exposure.

SKKU researchers achieved world-class efficiency of **25.26%** with sugar-enhanced perovskite solar cells for stable, low-cost clean energy.



**2,285**  
scholarly output



**6.1%**  
Korean publications



**36.8%**  
international collaborations

**39.2%**  
international collaboration impact



**1.81**  
FWCI

**62,720**  
citation count

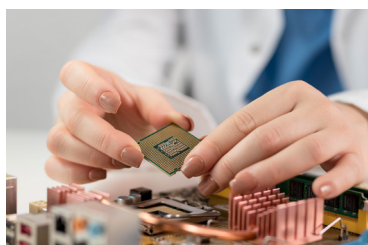


**64.2%**

publications in top 10% journal percentiles by CiteScore percentile

8 DECENT WORK AND  
ECONOMIC GROWTHDECENT WORK AND ECONOMIC  
GROWTHDeep-Tech Entrepreneurship:  
SKKU Lab-Based Startup Program

SKKU has been selected as the sole university in Korea for the **2025 Lab-Based Startup Leading University Program**, receiving KRW 1.967 billion over 2 years to strengthen its lab-to-startup ecosystem. Building on SKKU's strong research foundation in **AI, biotechnology, and semiconductors**, the program nurtures deep-tech ventures through **tailored support, mentorship, and commercialization pathways**. It promotes collaboration with accelerators, venture capital firms, and public institutions to help innovations advance from the lab discoveries to market-ready technologies. Several SKKU-born startups—such as **SkyX, H&S BioLab, MediArk, and Mimetics**—are already gaining global recognition. By connecting research to commercialization and job creation, SKKU drives **sustainable economic growth** and strengthens its position as a **regional leader in science and technology innovation**.



By translating research into commercialization and job creation, these initiatives **advance sustainable growth and strengthen** SKKU's position as a **leading hub** for science and technology entrepreneurship.

Youth  
Entrepreneurship:  
SKKU Campus  
Town Initiative

**SKKU's Campus Town Initiative** supports students and early-stage entrepreneurs with space, mentoring, and resources while strengthening the regional innovation ecosystem. Events like the **2025 Mid-Year Networking Day** reflect their holistic approach, blending business support with well-being. Engaging dozens of startups each year, the Campus Town Initiative fosters resilient entrepreneurs, creates jobs, and drives inclusive, sustainable growth.



**229**  
scholarly  
output



**3.5%**  
Korean  
publications



**38.4%**  
international  
collaborations

**34.1%**  
international  
collaboration impact



**2.38**  
FWCI

**4,288**  
citation count



**35.5%**

publications in top  
10% journal percentiles  
by CiteScore percentile

## 9 INDUSTRY, INNOVATION AND INFRASTRUCTURE



# INDUSTRY, INNOVATION AND INFRASTRUCTURE



## Supporting Bio-Health Innovation: SKKU BT-S Center at CES 2025

SKKU's **BT Startup Support Center (BT-S Center)** showcased Korea's leading medical device and digital healthcare startups at **CES 2025 in Las Vegas**. Six companies presented innovations in AI diagnostics, wearable therapeutics, surgical robotics, and advanced biomaterials, with two winning CES Innovation Awards. Since 2020, the BT-S Center has led the **DIPS 1000+ program**, supporting startups through global exposure and strategic partnerships while fostering technology-driven economic growth.



Under **SDG 9**, SKKU's initiatives **boost industrial innovation, build resilient ecosystems**, and position the university as a **hub for research and tech-driven growth**.

## Driving Regional Innovation through the RISE Program



SKKU was selected for the **Regional Innovation System & Education (RISE) program**, receiving 5 years of support and **KRW 20 billion** to lead ten projects in Korea's strategic "G7 industries," including semiconductors, AI, biotechnology, and quantum technologies. **GAIA (Gyeonggi Academia-Industry Alliance)** connects academia, industry, and research networks to promote joint R&D, technology transfer, and entrepreneurship.



Till date, GAIA **10,000+ professionals** has trained: **and 50+ startups**



**989**  
scholarly output



**4.7%**  
Korean publications



**28.4%**  
international collaborations

**25.2%**  
international collaboration impact



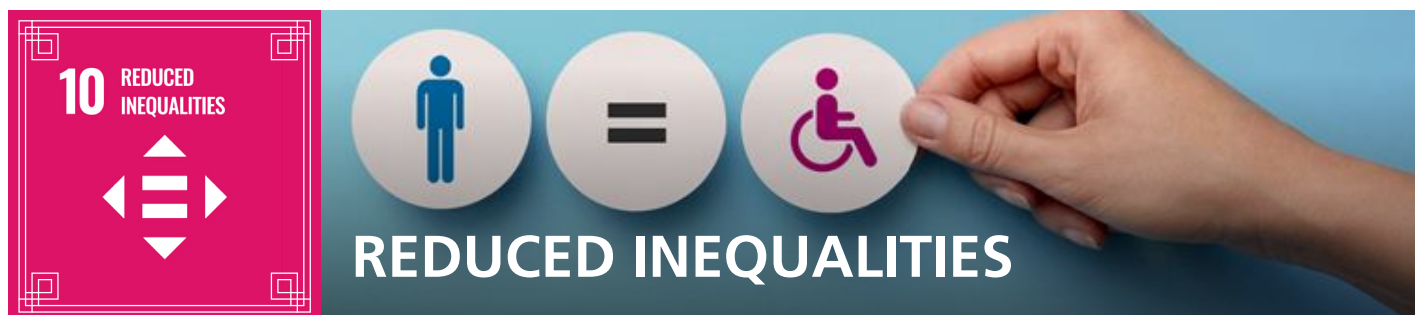
**1.44**  
FWCI

**15,777**  
citation count



**40.5%**

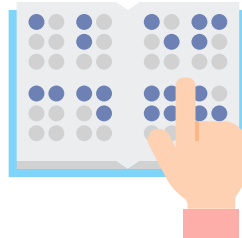
publications in top 10% journal percentiles by CiteScore percentile



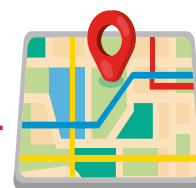
## Student-Led Efforts for an Inclusive, Barrier-Free Campus



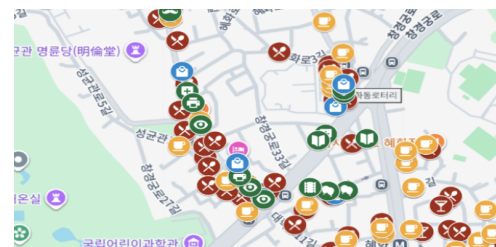
SKKU students introduced **Braille stickers on vending machines and tactile signs on handrails**, enabling students with **visual impairments** to navigate the campus safely and independently.



## Improving Accessibility through Barrier-Free Mapping



The student club **Equal** developed the **"Hyehwa Barrier-Free Google Map,"** providing wheelchair users detailed accessibility information for local facilities, including entrances, interior space, and restroom access. Regular updates ensure practical guidance for urban mobility.



SKKU's initiatives collectively **reduce inequalities, empower underrepresented groups**, and foster a campus and community culture rooted in inclusion and equity.



## Fostering an Inclusive and Equitable Campus

Courses such as **Culture and Gender, Minority Literature and Diaspora Studies, and Fashion and Diversity** integrate diversity and inclusion into academic learning. Student-led clubs, including **EQUAL** and **Queerholic**, advocate for accessibility, LGBTQ+ rights, and inclusive campus culture. Co-curricular programs encourage collaboration among students from diverse backgrounds.



**186**  
scholarly  
output



**5.1%**  
Korean  
publications



**40.9%**  
international  
collaborations

**31.8%**  
international  
collaboration impact



**2.82**  
FWCI

**3,113**  
citation count



**32.6%**

publications in top  
10% journal percentiles  
by CiteScore percentile

## 11 SUSTAINABLE CITIES AND COMMUNITIES



# SUSTAINABLE CITIES AND COMMUNITIES



## SKKU Library Recognized as Top Institution for Academic Information Sharing



SKKU Library was honored as an **"Excellent Institution"** in the **2025 Academic Information Sharing and Distribution Assessment by KERIS**.

With **over 2.3 million** volumes, SKKU's library collaborates with other universities through joint catalogs, interlibrary loans, and open access initiatives, promoting inclusive knowledge.

## Leveraging Public Data and AI for Sustainable Cities



In 2025, **SKKU, Microsoft, and the Seoul Metropolitan Government** co-hosted an AI Hackathon, where **36 students** developed solutions such as multilingual chatbots, emergency shelter systems, and senior re-employment platforms to improve urban safety, accessibility, and inclusion.

## The International Garden Exhibition for Sustainable Communities

Professor **Hye-Young Choi** and her SKKU team were invited to the RHS Flower Show Wentworth Woodhouse 2025 to present **"Garden Whispers,"** a sustainable garden, blending nature, architecture, and art. Supported by Hyundai Construction and the Korea Arboretum and Garden Institute, it features recycled 3D-printed components and highlights how green spaces can foster reflection and social connection.



**299**  
scholarly output



**2.9%**  
Korean publications



**35.5%**  
international collaborations

**29.6%**  
international collaboration impact



**2.29**  
FWCI

**5,085**  
citation count



**45.9%**

publications in top 10% journal percentiles by CiteScore percentile

12 RESPONSIBLE  
CONSUMPTION  
AND PRODUCTION

# RESPONSIBLE CONSUMPTION AND PRODUCTION

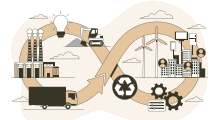


## Responsible Fashion Design through Zero-Waste Exhibition



SKKU's Department of Fashion hosted the **Zero-Waste Fashion Exhibition <0%>**, showcasing student-led innovations in zero-waste pattern making and eco-friendly materials like vegan leather. The project explored a **zero-waste pattern making**, and applied techniques such as modular cutting, folding, subtraction cutting, and weaving of offcuts to minimize textile waste.

## Advancing Circular Economy: Rounder



Student startup **Rounder** transforms discarded materials into valuable resources through initiatives such as reusable cup services and uses the **"NAFAL"** platform for reusing leftover event items. Donating nearly new furniture promotes circular solutions, reducing waste while creating economic value.



Through creative experimentation, industry engagement, and a strong focus on waste reduction, SKKU's initiatives contribute to **SDG 12** by promoting circular use of resources, advancing **sustainable production practices**, and inspiring dialogue on the role of design in building a **responsible fashion ecosystem**.



**217**  
scholarly  
output



**2.6%**  
Korean  
publications



**33.2%**  
international  
collaborations

**21.1%**  
international  
collaboration impact



**1.52**  
FWCI

**4,094**  
citation count



**52.7%**

publications in top  
10% journal percentiles  
by CiteScore percentile



## CLIMATE ACTION



### Leading Climate Action through the SKKU Institute for Carbon Neutrality

In May 2025, SKKU inaugurated the **Institute for Carbon Neutrality (ICON)** to advance a **net-zero campus** through research, innovation, and community engagement. The institute monitors greenhouse gas emissions, develops green building and waste recycling technologies, and promotes climate-conscious behaviors using the **SKKU Net-Zero**, a platform tracking real-time energy consumption and emissions.



### Promoting Climate Action through the "2050 Net-Zero Idea Contest"



SKKU hosted the **2050 Carbon Neutrality Idea Contest**, engaging 231 participants with 197 submissions of innovative carbon-neutral solutions. Creative proposals included smartphone-based carbon reduction games, seasonal carbon forecasts, and eco-friendly **"seed umbrellas"** to reduce plastic waste, fostering climate literacy and community collaboration.

SKKU's carbon neutrality efforts extend beyond research and administration, actively involving students, local communities, government, and young innovators to **spark collective ideas and inspire broader action** toward a sustainable, net-zero future.



**349**  
scholarly output



**3.4%**  
Korean publications



**34.4%** **35.2%**  
international collaborations international collaboration impact



**2.16**  
FWCI

**8,044**  
citation count



**58.5%**

publications in top 10% journal percentiles by CiteScore percentile



## LIFE BELOW WATER



### Global Recognition in Marine and Environmental Research

Professor **Jae-Seong Lee** received the prestigious **Humboldt Research Award** for over 30 years of groundbreaking research on climate change, marine ecosystems, and ecotoxicological impact of micropollutants. His studies have appeared in leading journals such as *Nature Climate Change* and *Nature Protocols*. His 520 SCI(E)-indexed papers, including 41 reviews and 22,500 citations (h-index 73, Google Scholar), highlight global recognition of SKKU's research in biological and environmental sciences.



Prof. Jae-Seong Lee



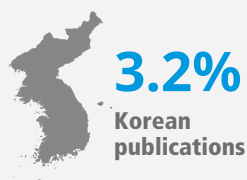
Alexander von  
**HUMBOLDT**  
STIFTUNG

Department of Biomechatronics developed **the world's first electrochemical-based 'universal sensor'** to detect nanoplastics from environmental samples with high sensitivity.

### World's First Universal Biomimetic Nanoplastic Sensor



Professor Jin-Sung Park's team developed the world's first biomimetic nanoplastic sensor, inspired by burdock seeds. With 500× higher sensitivity, it detects nanoplastics in diverse environmental samples without expensive equipment, and is crucial for protecting marine biodiversity and human health.



**1.42**  
FWCI

**2,512**  
citation count



**56.4%**

publications in top 10% journal percentiles by CiteScore percentile



## LIFE ON LAND



### Community Volunteering for Rural Sustainability

The **Annual Rural Volunteer program** by SKKU engaged nearly **200 students** over 6 days across **12 villages in Sangju, Gyeongsangbuk-do**. Students assisted local farmers with seasonal agricultural tasks such as grapevine pruning, weeding, and farmland maintenance, supporting labor-intensive small-scale farming.

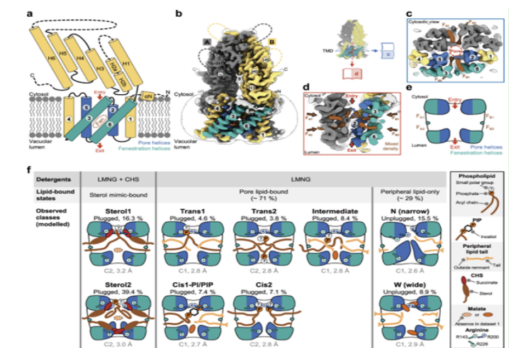


SKKU's "Annual Rural Volunteer" program fosters **urban-rural solidarity**, raises awareness of sustainable land use, and reinforces the connection between agriculture, ecosystem health, and community well-being.

### Advancing Plant Resilience for a Sustainable Future



Professor Sangho Lee's team in SKKU's **Department of Biological Sciences** revealed how lipids regulate the vacuolar anion channel **ALMT9** in plants, enhancing drought tolerance and adaptation to global warming. Using **cryo-electron microscopy**, the study uncovered mechanisms for stomatal regulation and ion storage, with potential applications for crop resilience and **sustainable agricultural productivity**.



**42**  
scholarly  
output



**1.2%**  
Korean  
publications



**54.8%** **19.1%**  
international  
collaborations international  
collaboration impact



**2.41**  
FWCI

**805**  
citation count



**53.7%**

publications in top  
10% journal percentiles  
by CiteScore percentile

16 PEACE, JUSTICE  
AND STRONG  
INSTITUTIONS

# PEACE, JUSTICE AND STRONG INSTITUTIONS



## Institutional Reform for Strengthening Constitutional Democracy



The Institute for Future Policy Studies hosted a roundtable on constitutional and political institutional reform, engaging experts from academia, politics, judiciary, and media. Discussions addressed **parliamentary reform, judicial restructuring, and decentralization**, focusing on restoring the rule of law and reducing dominance of personal or partisan interests. Through its role as a convener of dialogue, the university contributes to strengthening democratic frameworks for sustainable and resilient governance.

## Legal Frameworks for Climate Justice and Intergenerational Equity



A research collaboration led by Professor Gilwon Lee of SKKU Law and Professor Taejung Park of KAIST analyzed **South**



Prof. Gilwon Lee Prof. Taejung Park

**Korea's Constitutional Court ruling on climate justice**, emphasizing the state's duty to future generations. Their study, published in *Nature Human Behaviour*, underscored intergenerational equity as a constitutional principle and showed how law can ensure accountable climate governance and protect long-term interests.

Through research, dialogue, and policy engagement, **SKKU's SDG 16 initiatives strengthen institutions, promote justice, and foster transparent, accountable governance.**



**152**  
scholarly  
output



**5.4%**  
Korean  
publications



**36.2%**  
international  
collaborations

**19.8%**  
international  
collaboration impact



**1.42**  
FWCI

**1,797**  
citation count



**32.2%**

publications in top  
10% journal percentiles  
by CiteScore percentile

## 17 PARTNERSHIPS FOR THE GOALS



# PARTNERSHIP FOR THE GOALS



## Global Development Cooperation and Strategic Partnerships



SKKU's Institute of Trade established the Global Development Cooperation Center (GDC) and held its inaugural strategy forum in June 2025. Gathering experts from academia, government, and industry, the forum discussed strategies for effective

international development cooperation and Korea's transformation from aid recipient to donor. It showcased projects on infrastructure, capacity building, and skill development, emphasizing ODA consistency and knowledge sharing. Through GDC, SKKU strengthens SDG 17 by building global partnerships and promoting sustainable, inclusive growth.

The initiative **advances SDG 17** by fostering partnerships between academia, government, and global institutions. Through training, networking, and internships, SKKU is nurturing **future leaders** who can link **domestic expertise** with **international agendas** to **address pressing environmental challenges**.

## Building International Environmental Expertise and Collaborative Networks



The **Graduate School of Governance**, in collaboration with the **Ministry of Environment** and the **Korea Environment Corporation**, hosted the **2025 International Environmental Expert Training Program**. Participants received 80 hours of intensive training in environmental policy, climate change, and global governance, equipping them for careers in **UNEP, GGGI, GCF, OECD, UNDP, FAO, and other international organizations**.



**13,992**  
scholarly output



**6.4%**  
Korean publications



**30.7%** **46.3%**  
international collaborations international collaboration impact

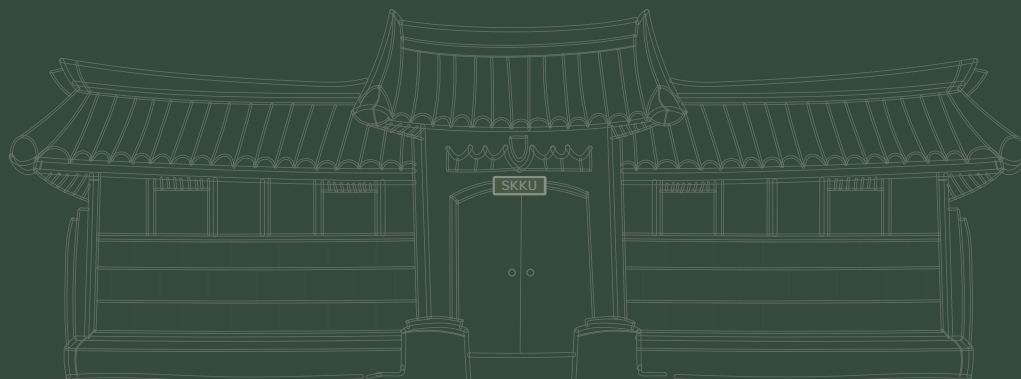


**2.24**  
FWCI

**321,085**  
citation count



**42.2%**  
publications in top 10% journal percentiles by CiteScore percentile



#### Humanities and Social Sciences Campus:

(03063) 25-2, Sungkyunkwan-ro, Jongno-gu,  
Seoul, Korea

#### Natural Sciences Campus:

(16419) 2066, Seobu-ro, Jangan-gu,  
Suwon-si, Gyeonggi-do, Korea

#### Contact

[facebook.com/Sungkyunkwanuniversity1398](https://facebook.com/Sungkyunkwanuniversity1398)

[@skku.intl](https://twitter.com/skku.intl)

[linkedin.com/school/skku1398](https://linkedin.com/school/skku1398)

[skku.edu/eng](https://skku.edu/eng)