



**EAST BRIDGE  
UNIVERSITY**

PARIS, FRANCE

# ARTS AND HUMANITIES



Visit Our Website  
**[www.ebu.ac](http://www.ebu.ac)**





# About East Bridge University (EBU)

East Bridge University is a **global higher-education institution** that offers online and affordable degree programmes, diplomas, and certified courses to all. Tailored to suit the changing needs of the 21st century, our programmes are a unique blend of robust theoretical knowledge and real-world practical exposure. We aim to **empower adult learners and professionals with the best industry-specific courses** that enable them to navigate the dynamic and ever-evolving professional landscape seamlessly. At East Bridge University, we greatly foster critical thinking, analytical skills, and leadership qualities among our students.

East Bridge University is **legally incorporated in Paris** and has received authorisation from the Rector's Office of the Paris Academy, which is under the jurisdiction of the **Ministry of National Education**. This prestigious recognition positions EBU as a legitimate, respected, and independent distance learning institution.

## What Makes Our Programmes Unique?

-  Find work-life balance with our online, flexible programme.
-  The course is endorsed by global partners and education bodies.
-  Gain a deeper understanding of the functional disciplines of your profession.
-  Get the opportunity to conduct action-based research work, solving real-world challenges.
-  Enhance your career prospects by earning academic credentials.
-  Be able to promote positive change and growth in your industry.
-  Become an industry expert and a thought leader in your field.
-  Open your doors towards doctorate-level academic pursuits.
-  Address real-world problems with a strong academic understanding.



Visit Our Website  
**[www.ebu.ac](http://www.ebu.ac)**





**EAST BRIDGE  
UNIVERSITY**  
PARIS, FRANCE

## Our Mission and Vision

**Mission:** Empowering learners to thrive in the dynamic and ever-evolving professional landscape through lifelong education and personal growth, while embedding environmental responsibility, inclusion, and ethical leadership across our teaching, research, partnerships, and operations.

**Vision:** We are dedicated to fostering a community of lifelong learners who create positive change and make meaningful contributions to society. We strive to provide a global space where individuals pursue their passions and achieve professional and personal fulfilment—while championing sustainability, inclusion, gender equity, and ethical leadership; enabling decent work and lifelong employability; reducing barriers to opportunity; and building partnerships that translate learning into measurable impact.

### Core Values

01

Promote continuous skill enhancement and growth through lifelong learning.

02

Enable professional development and career advancement in the dynamic job markets.

03

Enhance the ability to navigate change through shifts in mindset and knowledge accumulation.

04

Enrich the lives of individuals by providing support in the pursuit of their passions and interests.

05

Foster community engagement that will enable collective growth through knowledge exchange.



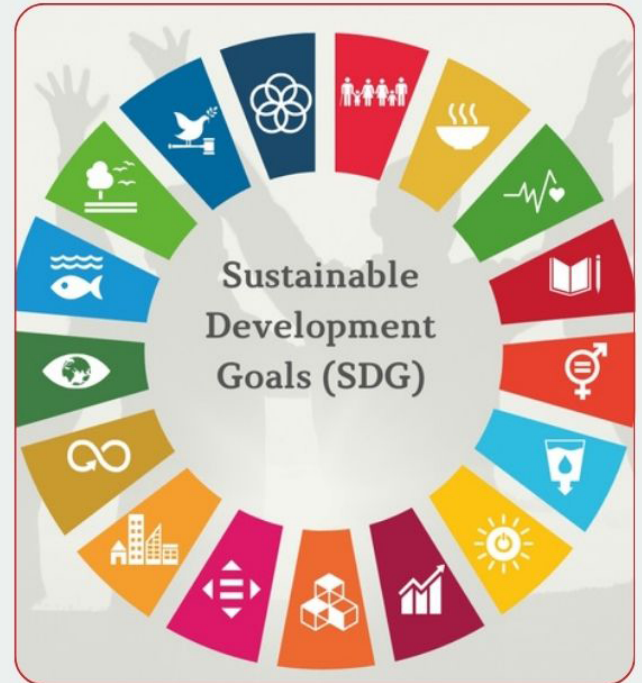
Visit Our Website  
**[www.ebu.ac](http://www.ebu.ac)**



# Aligning with the **United Nations Sustainable Development Goals (SDGs)** - Vision for 2025 - 2030

In recognition of our efforts towards building sustainable business practices, affordable education, and fostering an international community of lifelong learners, East Bridge University is dedicated towards the advancement of the United Nations Sustainable Development Goals (SDGs).

As a part of our endeavour to promote sustainable education, lifelong learning, community welfare and upliftment, East Bridge University has participated in the Times Higher Education (THE) Impact Rankings, which evaluate institutions based on their real-world contributions to the SDGs.



- ✓ **SDG 1: No Poverty:** Establishing a comprehensive scholarship programme aimed at students facing financial hardship, including working adults with family responsibilities who are determined to pursue higher education.
- ✓ **SDG 4: Quality Education:** Delivering inclusive and practical education that enables individuals to progress in their current industries or transition into new career opportunities.
- ✓ **SDG 5: Gender Equality:** Promoting gender balance across faculty, board membership, staffing, and student demographics, and ensuring that no individual is excluded or disadvantaged due to gender identity.
- ✓ **SDG 17: Partnerships for the Goals:** Proactively seeking collaboration and networking opportunities with other higher education institutions, NGOs, and industry partners to strengthen shared impact and drive collective progress toward the SDGs.







# Department of Liberal Studies, Arts and Humanities

East Bridge University's programmes in Liberal Studies, Arts, and Humanities empower learners to think critically, act ethically, and engage globally. Rooted in the values of sustainability and inclusivity, our online programmes integrate the UN SDGs into interdisciplinary learning, preparing students to influence social progress, cultural understanding, and global transformation.

## Programme Highlights

Master of Social Sciences

Master of Arts

Applied Doctorate in Social Sciences

Applied Doctorate in Arts

- ✓ All our programmes are delivered online, enabling students to pursue their academic journey from anywhere in the world and at their own pace.
- ✓ Our programmes are designed to be industry-relevant and dynamic to suit the current professional landscape.
- ✓ Through robust coursework, reflective and research-based assignments, and a capstone project, the programmes perfectly blend theoretical knowledge with real-life practical applications.
- ✓ The program enables learners to access a global community of experienced professionals and alumni.
- ✓ Global accreditation organisations and quality assurance bodies recognise and endorse our programmes.



Visit Our Website  
**[www.ebu.ac](http://www.ebu.ac)**



# Master of Social Sciences

In this era of rapid globalisation and digitalisation, professionals with a strong foundation in social sciences are at the forefront of shaping the global landscape, from economics and political science to international relations and sustainability.

## Specialisations

- Master of Social Sciences in Economics
- Master of Social Sciences in Philosophy, Politics, and Economics
- Master of Social Sciences in International Relations
- Master of Social Sciences in Political Science and International Relations
- Master of Social Sciences in Tourism, Hospitality, and Event Management
- Master of Social Sciences in Leadership and Sustainability

## Eligibility Criteria

- ☒ A diploma, or high-school completion certificate, or its equivalent.
- ☒ Prior professional experience or prior learning credits.
- ☒ A basic English proficiency level (Studied all subjects in English at High School, or at least 55% of marks in English at High School).
- ☒ Knowledge of conducting basic online research through internet browsing and proficiency in MS Word are desired.

## Duration

The duration of a Master of Social Sciences is generally 24 months. Our Program Officers will help you throughout the course to complete the course in an accelerated process.







**EAST BRIDGE  
UNIVERSITY**

PARIS, FRANCE

# Applied Doctorate in Social Sciences

East Bridge University's Applied Doctorate in Social Sciences is a specialised doctoral program designed for professionals and scholars willing to conduct original and in-depth research to address various socio-economic and political issues and make a meaningful impact on the world.



## Specialisations

- Applied Doctorate in Economics
- Applied Doctorate in Philosophy, Politics, and Economics
- Applied Doctorate in International Relations
- Applied Doctorate in Political Science and International Relations
- Applied Doctorate in Tourism, Hospitality, and Event Management
- Applied Doctorate in Leadership and Sustainability

## Eligibility Criteria

- ☒ Recognised Bachelor's Degree or Master's Degree in the relevant field of study.
- ☒ It is generally preferred that any candidate pursuing an Executive Doctorate program has a minimum of 10 years of professional experience.
- ☒ A basic English Proficiency Level (Studied all subjects in English at High School, or at least 55% of marks in English at High School).
- ☒ Knowledge of internet browsing, online research skills, and proficiency in MS Word.

## Duration

The duration of an Applied Doctorate in Social Sciences is generally 36 months. Our Program Officers will help you throughout the course to complete the course in an accelerated process.



Visit Our Website

**[www.ebu.ac](http://www.ebu.ac)**



# Master of Arts

With an industry-relevant curriculum and tailored specialisations, East Bridge University (EBU) has meticulously designed Master of Arts programmes to prepare students to contribute meaningfully to society's intellectual and creative evolution.



## Specialisations

- Master of Arts in Philosophy
- Master of Arts in Liberal Studies
- Master of Arts in English Language and Literature
- Master of Arts in Humanities
- Master of Arts in Psychology
- Master of Arts in Counselling

## Eligibility Criteria

- ☒ A diploma, or high-school completion certificate, or its equivalent.
- ☒ Prior professional experience, or prior learning credits.
- ☒ A basic English proficiency level (Studied all subjects in English at High School, or at least 55% of marks in English at High School).
- ☒ Knowledge of conducting basic online research through internet browsing and proficiency in MS Word is desired.

## Duration

The duration of a Master of Arts is generally 24 months. Our Program Officers will help you throughout the course to complete the course in an accelerated process.



Visit Our Website  
**[www.ebu.ac](http://www.ebu.ac)**



# Applied Doctorate in Arts

The Applied Doctorate in Arts and Humanities program at East Bridge University is a research-intensive program designed to develop students' critical inquiry skills, decision-making abilities, and cultural sensitivity.



## Specialisations

- Applied Doctorate in Philosophy
- Applied Doctorate in Liberal Studies
- Applied Doctorate in English Language and Literature
- Applied Doctorate in Humanities
- Applied Doctorate in Psychology
- Applied Doctorate in Counselling

## Eligibility Criteria

- ☒ Recognised Bachelor's Degree or Master's Degree in the relevant field of study.
- ☒ It is generally preferred that any candidate pursuing an Executive Doctorate program has a minimum of 10 years of professional experience.
- ☒ A basic English Proficiency Level (Studied all subjects in English at High School, or at least 55% of marks in English at High School).
- ☒ Knowledge of internet browsing, online research skills, and proficiency in MS Word.

## Duration

The duration of an Applied Doctorate in Arts is generally 36 months. Our Program Officers will help you throughout the course to complete the course in an accelerated process.



Visit Our Website  
**[www.ebu.ac](http://www.ebu.ac)**



## East Bridge University's Memberships:



Association to Advance Collegiate Schools of Business (AACSB)



Continuing Professional Development (CPD)



British Quality Foundation (BQF)



European Association for International Education (EAIE)



European Council of Leading Business Schools (ECLBS)



E Learning Quality Network (ELQN)



Association for Teacher Education in Europe (ATEE)



European Society for Research on the Education of Adults (ESREA)



Accreditation Council for Business Schools and programmes (ACBSP)

## East Bridge University's Accreditations:



European Agency for Higher Education Advancement (EAHEA)



Education Quality Accreditation Commission (EQAC)



EDU.INT - INTER-GOVERNMENTAL ORGANIZATION



International Association for Quality Assurance in Pre-Tertiary & Higher Education (QAHE)



International Education Accreditation Council (IEAC)



OTHM Qualifications



Mercosul Accreditation Agency (MACCA)



Visit Our Website  
**[www.ebu.ac](http://www.ebu.ac)**



# Enrich your mind. Shape your world

Study **Arts & Humanities** with purpose. Lead conversations. Inspire change.  
**Join EBU's Liberal Studies department.**



*Explore our programmes*

<https://www.ebu.ac/departement-of-liberal-studies-arts-and-humanities.php>

APPLY NOW



[contact@ebu.ac](mailto:contact@ebu.ac)



+33 1 85 14 96 41



[www.ebu.ac](http://www.ebu.ac)